



Full wwPDB X-ray Structure Validation Report ⓘ

Apr 10, 2018 – 10:12 PM EDT

PDB ID : 1HVQ
Title : CRYSTAL STRUCTURES OF HEVAMINE, A PLANT DEFENCE PROTEIN WITH CHITINASE AND LYSOZYME ACTIVITY, AND ITS COMPLEX WITH AN INHIBITOR
Authors : Terwisscha Van Scheltinga, A.C.; Kalk, K.H.; Beintema, J.J.; Dijkstra, B.W.
Deposited on : 1994-10-13
Resolution : 2.20 Å(reported)

This is a Full wwPDB X-ray Structure Validation Report for a publicly released PDB entry.

We welcome your comments at validation@mail.wwpdb.org

A user guide is available at

<https://www.wwpdb.org/validation/2017/XrayValidationReportHelp>

with specific help available everywhere you see the ⓘ symbol.

The following versions of software and data (see [references ⓘ](#)) were used in the production of this report:

MolProbity : 4.02b-467
Mogul : 1.7.3 (157068), CSD as539be (2018)
Xtriage (Phenix) : 1.13
EDS : rb-20031021
Percentile statistics : 20171227.v01 (using entries in the PDB archive December 27th 2017)
Refmac : 5.8.0158
CCP4 : 7.0 (Gargrove)
Ideal geometry (proteins) : Engh & Huber (2001)
Ideal geometry (DNA, RNA) : Parkinson et al. (1996)
Validation Pipeline (wwPDB-VP) : rb-20031021

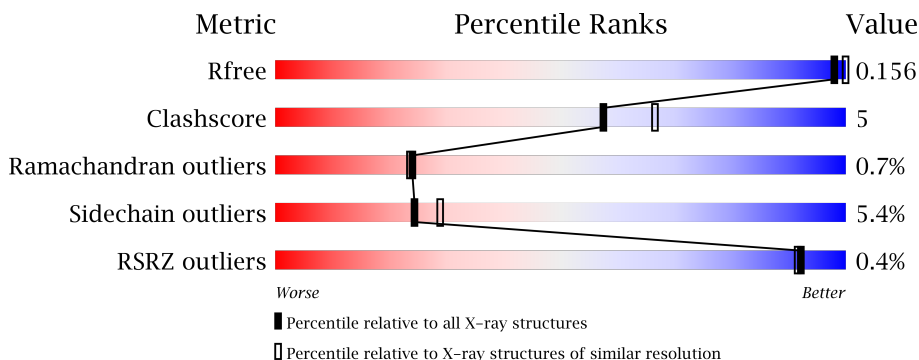
1 Overall quality at a glance i

The following experimental techniques were used to determine the structure:

X-RAY DIFFRACTION

The reported resolution of this entry is 2.20 Å.

Percentile scores (ranging between 0-100) for global validation metrics of the entry are shown in the following graphic. The table shows the number of entries on which the scores are based.



Metric	Whole archive (#Entries)	Similar resolution (#Entries, resolution range(Å))
R_{free}	111664	4343 (2.20-2.20)
Clashscore	122126	5027 (2.20-2.20)
Ramachandran outliers	120053	4952 (2.20-2.20)
Sidechain outliers	120020	4953 (2.20-2.20)
RSRZ outliers	108989	4245 (2.20-2.20)

The table below summarises the geometric issues observed across the polymeric chains and their fit to the electron density. The red, orange, yellow and green segments on the lower bar indicate the fraction of residues that contain outliers for ≥ 3 , 2, 1 and 0 types of geometric quality criteria. A grey segment represents the fraction of residues that are not modelled. The numeric value for each fraction is indicated below the corresponding segment, with a dot representing fractions $\leq 5\%$. The upper red bar (where present) indicates the fraction of residues that have poor fit to the electron density. The numeric value is given above the bar.

Mol	Chain	Length	Quality of chain
1	A	273	

2 Entry composition [i](#)

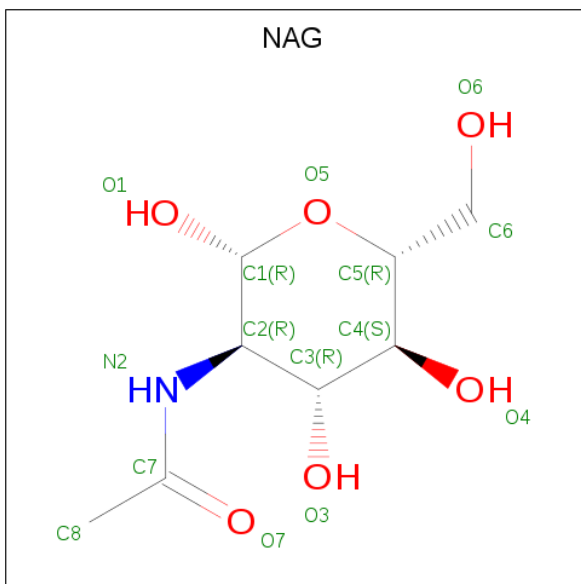
There are 3 unique types of molecules in this entry. The entry contains 2334 atoms, of which 0 are hydrogens and 0 are deuteriums.

In the tables below, the ZeroOcc column contains the number of atoms modelled with zero occupancy, the AltConf column contains the number of residues with at least one atom in alternate conformation and the Trace column contains the number of residues modelled with at most 2 atoms.

- Molecule 1 is a protein called HEVAMINE A.

Mol	Chain	Residues	Atoms					ZeroOcc	AltConf	Trace
			Total	C	N	O	S			
1	A	273	2087	1331	351	397	8	0	0	0

- Molecule 2 is N-ACETYL-D-GLUCOSAMINE (three-letter code: NAG) (formula: C₈H₁₅NO₆).



Mol	Chain	Residues	Atoms				ZeroOcc	AltConf
			Total	C	N	O		
2	A	1	14	8	1	5	0	0
2	A	1	14	8	1	5	0	0
2	A	1	15	8	1	6	0	0


- Molecule 3 is water.

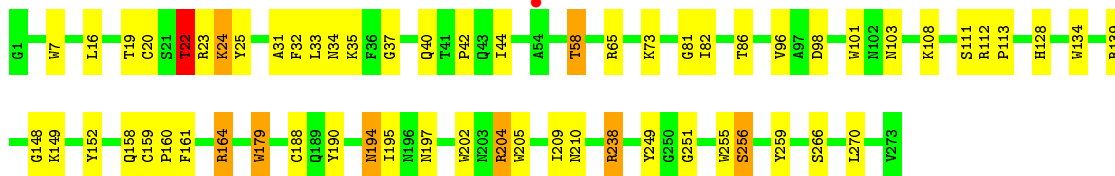
Mol	Chain	Residues	Atoms		ZeroOcc	AltConf
3	A	204	Total 204	O 204	0	0

3 Residue-property plots [i](#)

These plots are drawn for all protein, RNA and DNA chains in the entry. The first graphic for a chain summarises the proportions of the various outlier classes displayed in the second graphic. The second graphic shows the sequence view annotated by issues in geometry and electron density. Residues are color-coded according to the number of geometric quality criteria for which they contain at least one outlier: green = 0, yellow = 1, orange = 2 and red = 3 or more. A red dot above a residue indicates a poor fit to the electron density ($RSRZ > 2$). Stretches of 2 or more consecutive residues without any outlier are shown as a green connector. Residues present in the sample, but not in the model, are shown in grey.

- Molecule 1: HEVAMINE A

Chain A:  78% 19%



4 Data and refinement statistics

Property	Value	Source
Space group	P 21 21 21	Depositor
Cell constants a, b, c, α , β , γ	52.30Å 57.36Å 82.68Å 90.00° 90.00° 90.00°	Depositor
Resolution (Å)	8.00 – 2.20 7.98 – 2.40	Depositor EDS
% Data completeness (in resolution range)	92.7 (8.00-2.20) 92.7 (7.98-2.40)	Depositor EDS
R_{merge}	0.08	Depositor
R_{sym}	(Not available)	Depositor
$\langle I/\sigma(I) \rangle$ ¹	4.64 (at 2.40Å)	Xtrriage
Refinement program	X-PLOR	Depositor
R, R_{free}	0.144 , 0.244 0.160 , 0.156	Depositor DCC
R_{free} test set	955 reflections (10.44%)	wwPDB-VP
Wilson B-factor (Å ²)	15.0	Xtrriage
Anisotropy	0.655	Xtrriage
Bulk solvent k_{sol} (e/Å ³), B_{sol} (Å ²)	0.28 , 75.0	EDS
L-test for twinning ²	$\langle L \rangle = 0.49$, $\langle L^2 \rangle = 0.32$	Xtrriage
Estimated twinning fraction	No twinning to report.	Xtrriage
F_o, F_c correlation	0.96	EDS
Total number of atoms	2334	wwPDB-VP
Average B, all atoms (Å ²)	12.0	wwPDB-VP

Xtrriage's analysis on translational NCS is as follows: *The largest off-origin peak in the Patterson function is 8.45% of the height of the origin peak. No significant pseudotranslation is detected.*

¹Intensities estimated from amplitudes.

²Theoretical values of $\langle |L| \rangle$, $\langle L^2 \rangle$ for acentric reflections are 0.5, 0.333 respectively for untwinned datasets, and 0.375, 0.2 for perfectly twinned datasets.

5 Model quality [i](#)

5.1 Standard geometry [i](#)

Bond lengths and bond angles in the following residue types are not validated in this section:
NAG

The Z score for a bond length (or angle) is the number of standard deviations the observed value is removed from the expected value. A bond length (or angle) with $|Z| > 5$ is considered an outlier worth inspection. RMSZ is the root-mean-square of all Z scores of the bond lengths (or angles).

Mol	Chain	Bond lengths		Bond angles	
		RMSZ	# Z >5	RMSZ	# Z >5
1	A	0.82	0/2142	1.62	51/2914 (1.8%)

There are no bond length outliers.

All (51) bond angle outliers are listed below:

Mol	Chain	Res	Type	Atoms	Z	Observed(°)	Ideal(°)
1	A	31	ALA	CA-C-N	-10.72	93.62	117.20
1	A	31	ALA	O-C-N	10.02	138.73	122.70
1	A	139	ARG	NE-CZ-NH2	-9.85	115.38	120.30
1	A	134	TRP	CD1-CG-CD2	8.67	113.24	106.30
1	A	101	TRP	CD1-CG-CD2	8.59	113.17	106.30
1	A	139	ARG	NE-CZ-NH1	8.35	124.47	120.30
1	A	205	TRP	CD1-CG-CD2	8.34	112.97	106.30
1	A	134	TRP	CE2-CD2-CG	-8.12	100.80	107.30
1	A	179	TRP	CD1-CG-CD2	8.08	112.76	106.30
1	A	164	ARG	NE-CZ-NH1	8.04	124.32	120.30
1	A	32	PHE	N-CA-C	7.67	131.70	111.00
1	A	255	TRP	CA-C-N	-7.51	100.68	117.20
1	A	179	TRP	CE2-CD2-CG	-7.50	101.30	107.30
1	A	255	TRP	CD1-CG-CD2	7.44	112.25	106.30
1	A	255	TRP	CG-CD2-CE3	7.43	140.59	133.90
1	A	101	TRP	CE2-CD2-CG	-7.30	101.46	107.30
1	A	7	TRP	CD1-CG-CD2	7.24	112.09	106.30
1	A	255	TRP	CE2-CD2-CG	-7.24	101.51	107.30
1	A	31	ALA	C-N-CA	7.14	139.55	121.70
1	A	112	ARG	NE-CZ-NH2	-7.13	116.73	120.30
1	A	134	TRP	CG-CD2-CE3	7.10	140.29	133.90
1	A	205	TRP	CE2-CD2-CG	-7.05	101.66	107.30
1	A	7	TRP	CE2-CD2-CG	-6.93	101.76	107.30
1	A	202	TRP	CE2-CD2-CG	-6.63	102.00	107.30

Continued on next page...

Continued from previous page...

Mol	Chain	Res	Type	Atoms	Z	Observed(°)	Ideal(°)
1	A	255	TRP	CB-CG-CD1	-6.59	118.43	127.00
1	A	20	CYS	CA-CB-SG	-6.55	102.20	114.00
1	A	33	LEU	N-CA-C	-6.44	93.62	111.00
1	A	65	ARG	NE-CZ-NH1	6.10	123.35	120.30
1	A	256	SER	N-CA-C	6.10	127.47	111.00
1	A	101	TRP	CG-CD1-NE1	-6.09	104.01	110.10
1	A	134	TRP	CG-CD1-NE1	-6.08	104.02	110.10
1	A	202	TRP	CD1-CG-CD2	6.00	111.10	106.30
1	A	96	VAL	CG1-CB-CG2	-5.95	101.38	110.90
1	A	259	TYR	CB-CG-CD1	-5.91	117.45	121.00
1	A	159	CYS	N-CA-C	5.69	126.37	111.00
1	A	58	THR	N-CA-CB	-5.67	99.52	110.30
1	A	205	TRP	CG-CD1-NE1	-5.65	104.45	110.10
1	A	134	TRP	CB-CG-CD1	-5.64	119.67	127.00
1	A	152	TYR	CB-CG-CD2	-5.61	117.63	121.00
1	A	190	TYR	CB-CG-CD1	-5.49	117.71	121.00
1	A	256	SER	CA-CB-OG	-5.47	96.43	111.20
1	A	266	SER	CA-CB-OG	-5.44	96.50	111.20
1	A	238	ARG	NE-CZ-NH2	-5.29	117.65	120.30
1	A	32	PHE	CA-C-N	-5.25	105.64	117.20
1	A	202	TRP	CG-CD2-CE3	5.25	138.62	133.90
1	A	101	TRP	CB-CG-CD1	-5.20	120.24	127.00
1	A	22	THR	N-CA-CB	-5.20	100.42	110.30
1	A	23	ARG	NE-CZ-NH1	5.20	122.90	120.30
1	A	204	ARG	NE-CZ-NH1	5.18	122.89	120.30
1	A	255	TRP	CG-CD1-NE1	-5.05	105.05	110.10
1	A	209	ILE	CA-C-N	-5.02	106.15	117.20

There are no chirality outliers.

There are no planarity outliers.

5.2 Too-close contacts

In the following table, the Non-H and H(model) columns list the number of non-hydrogen atoms and hydrogen atoms in the chain respectively. The H(added) column lists the number of hydrogen atoms added and optimized by MolProbity. The Clashes column lists the number of clashes within the asymmetric unit, whereas Symm-Clashes lists symmetry related clashes.

Mol	Chain	Non-H	H(model)	H(added)	Clashes	Symm-Clashes
1	A	2087	0	2020	21	0
2	A	43	0	39	2	0

Continued on next page...

Continued from previous page...

Mol	Chain	Non-H	H(model)	H(added)	Clashes	Symm-Clashes
3	A	204	0	0	2	1
All	All	2334	0	2059	22	1

The all-atom clashscore is defined as the number of clashes found per 1000 atoms (including hydrogen atoms). The all-atom clashscore for this structure is 5.

All (22) close contacts within the same asymmetric unit are listed below, sorted by their clash magnitude.

Atom-1	Atom-2	Interatomic distance (Å)	Clash overlap (Å)
1:A:103:ASN:HD22	1:A:113:PRO:HD3	1.62	0.63
1:A:19:THR:O	1:A:22:THR:HB	1.99	0.62
1:A:22:THR:HG22	1:A:24:LYS:H	1.64	0.62
1:A:149:LYS:HD3	3:A:447:HOH:O	2.07	0.54
1:A:24:LYS:HG3	1:A:270:LEU:HD22	1.92	0.51
1:A:161:PHE:HB3	1:A:204:ARG:HD2	1.92	0.51
1:A:35:LYS:HE2	1:A:40:GLN:HB3	1.92	0.51
1:A:160:PRO:HD3	1:A:188:CYS:SG	2.54	0.48
1:A:164:ARG:HH11	1:A:164:ARG:HG3	1.78	0.47
1:A:22:THR:HG23	1:A:24:LYS:HD3	1.96	0.47
1:A:35:LYS:O	1:A:42:PRO:HA	2.15	0.46
1:A:210:ASN:HB2	3:A:348:HOH:O	2.15	0.46
1:A:195:ILE:HG12	1:A:238:ARG:NH2	2.33	0.44
1:A:37:GLY:HA3	1:A:86:THR:O	2.17	0.43
1:A:82:ILE:HD12	2:A:276:NAG:H5	2.00	0.43
1:A:194:ASN:ND2	1:A:197:ASN:H	2.17	0.42
1:A:22:THR:CG2	1:A:24:LYS:HB2	2.49	0.42
1:A:16:LEU:HA	1:A:16:LEU:HD12	1.87	0.42
2:A:275:NAG:H82	2:A:276:NAG:H62	2.02	0.41
1:A:22:THR:HG21	1:A:25:TYR:CE2	2.56	0.40
1:A:249:TYR:CZ	1:A:251:GLY:HA2	2.57	0.40
1:A:81:GLY:O	1:A:128:HIS:HE1	2.04	0.40

All (1) symmetry-related close contacts are listed below. The label for Atom-2 includes the symmetry operator and encoded unit-cell translations to be applied.

Atom-1	Atom-2	Interatomic distance (Å)	Clash overlap (Å)
3:A:457:HOH:O	3:A:468:HOH:O 3_645]	2.16	0.04

5.3 Torsion angles [i](#)

5.3.1 Protein backbone [i](#)

In the following table, the Percentiles column shows the percent Ramachandran outliers of the chain as a percentile score with respect to all X-ray entries followed by that with respect to entries of similar resolution.

The Analysed column shows the number of residues for which the backbone conformation was analysed, and the total number of residues.

Mol	Chain	Analysed	Favoured	Allowed	Outliers	Percentiles
1	A	271/273 (99%)	261 (96%)	8 (3%)	2 (1%)	24 23

All (2) Ramachandran outliers are listed below:

Mol	Chain	Res	Type
1	A	148	GLY
1	A	256	SER

5.3.2 Protein sidechains [i](#)

In the following table, the Percentiles column shows the percent sidechain outliers of the chain as a percentile score with respect to all X-ray entries followed by that with respect to entries of similar resolution.

The Analysed column shows the number of residues for which the sidechain conformation was analysed, and the total number of residues.

Mol	Chain	Analysed	Rotameric	Outliers	Percentiles
1	A	221/221 (100%)	209 (95%)	12 (5%)	24 29

All (12) residues with a non-rotameric sidechain are listed below:

Mol	Chain	Res	Type
1	A	22	THR
1	A	24	LYS
1	A	34	ASN
1	A	44	ILE
1	A	58	THR
1	A	73	LYS
1	A	98	ASP
1	A	108	LYS
1	A	111	SER

Continued on next page...

Continued from previous page...

Mol	Chain	Res	Type
1	A	158	GLN
1	A	179	TRP
1	A	194	ASN

Some sidechains can be flipped to improve hydrogen bonding and reduce clashes. All (4) such sidechains are listed below:

Mol	Chain	Res	Type
1	A	103	ASN
1	A	128	HIS
1	A	171	ASN
1	A	194	ASN

5.3.3 RNA [i](#)

There are no RNA molecules in this entry.

5.4 Non-standard residues in protein, DNA, RNA chains [i](#)

There are no non-standard protein/DNA/RNA residues in this entry.

5.5 Carbohydrates [i](#)

There are no carbohydrates in this entry.

5.6 Ligand geometry [i](#)

3 ligands are modelled in this entry.

In the following table, the Counts columns list the number of bonds (or angles) for which Mogul statistics could be retrieved, the number of bonds (or angles) that are observed in the model and the number of bonds (or angles) that are defined in the Chemical Component Dictionary. The Link column lists molecule types, if any, to which the group is linked. The Z score for a bond length (or angle) is the number of standard deviations the observed value is removed from the expected value. A bond length (or angle) with $|Z| > 2$ is considered an outlier worth inspection. RMSZ is the root-mean-square of all Z scores of the bond lengths (or angles).

Mol	Type	Chain	Res	Link	Bond lengths			Bond angles		
					Counts	RMSZ	# Z > 2	Counts	RMSZ	# Z > 2
2	NAG	A	274	2	14,14,15	0.89	1 (7%)	17,19,21	1.31	3 (17%)

Mol	Type	Chain	Res	Link	Bond lengths			Bond angles		
					Counts	RMSZ	# Z > 2	Counts	RMSZ	# Z > 2
2	NAG	A	275	2	14,14,15	1.15	3 (21%)	17,19,21	1.55	3 (17%)
2	NAG	A	276	2	15,15,15	0.90	0	21,21,21	1.36	2 (9%)

In the following table, the Chirals column lists the number of chiral outliers, the number of chiral centers analysed, the number of these observed in the model and the number defined in the Chemical Component Dictionary. Similar counts are reported in the Torsion and Rings columns. '-' means no outliers of that kind were identified.

Mol	Type	Chain	Res	Link	Chirals	Torsions	Rings
2	NAG	A	274	2	-	0/6/23/26	0/1/1/1
2	NAG	A	275	2	-	0/6/23/26	0/1/1/1
2	NAG	A	276	2	-	0/6/26/26	0/1/1/1

All (4) bond length outliers are listed below:

Mol	Chain	Res	Type	Atoms	Z	Observed(Å)	Ideal(Å)
2	A	275	NAG	O5-C1	-2.78	1.39	1.43
2	A	275	NAG	O5-C5	-2.27	1.38	1.43
2	A	274	NAG	C1-C2	-2.03	1.49	1.52
2	A	275	NAG	C1-C2	-2.03	1.49	1.52

All (8) bond angle outliers are listed below:

Mol	Chain	Res	Type	Atoms	Z	Observed(°)	Ideal(°)
2	A	276	NAG	C1-C2-C3	-3.51	105.75	110.54
2	A	275	NAG	C1-C2-N2	-3.08	105.23	110.49
2	A	275	NAG	C4-C3-C2	-2.37	107.54	111.02
2	A	274	NAG	O4-C4-C3	-2.31	104.95	110.34
2	A	276	NAG	C8-C7-N2	2.10	119.77	116.10
2	A	274	NAG	C1-O5-C5	2.44	115.54	112.19
2	A	274	NAG	C1-C2-N2	2.46	114.69	110.49
2	A	275	NAG	C8-C7-N2	2.94	121.26	116.10

There are no chirality outliers.

There are no torsion outliers.

There are no ring outliers.

2 monomers are involved in 2 short contacts:

Mol	Chain	Res	Type	Clashes	Symm-Clashes
2	A	275	NAG	1	0

Continued on next page...

Continued from previous page...

Mol	Chain	Res	Type	Clashes	Symm-Clashes
2	A	276	NAG	2	0

5.7 Other polymers [i](#)

There are no such residues in this entry.

5.8 Polymer linkage issues [i](#)

There are no chain breaks in this entry.

6 Fit of model and data [i](#)

6.1 Protein, DNA and RNA chains [i](#)

In the following table, the column labelled '#RSRZ> 2' contains the number (and percentage) of RSRZ outliers, followed by percent RSRZ outliers for the chain as percentile scores relative to all X-ray entries and entries of similar resolution. The OWAB column contains the minimum, median, 95th percentile and maximum values of the occupancy-weighted average B-factor per residue. The column labelled 'Q< 0.9' lists the number of (and percentage) of residues with an average occupancy less than 0.9.

Mol	Chain	Analysed	<RSRZ>	#RSRZ>2	OWAB(Å ²)	Q<0.9
1	A	273/273 (100%)	-0.88	1 (0%) 92 91	2, 9, 26, 39	0

All (1) RSRZ outliers are listed below:

Mol	Chain	Res	Type	RSRZ
1	A	54	ALA	2.0

6.2 Non-standard residues in protein, DNA, RNA chains [i](#)

There are no non-standard protein/DNA/RNA residues in this entry.

6.3 Carbohydrates [i](#)

There are no carbohydrates in this entry.

6.4 Ligands [i](#)

In the following table, the Atoms column lists the number of modelled atoms in the group and the number defined in the chemical component dictionary. The B-factors column lists the minimum, median, 95th percentile and maximum values of B factors of atoms in the group. The column labelled 'Q< 0.9' lists the number of atoms with occupancy less than 0.9.

Mol	Type	Chain	Res	Atoms	RSCC	RSR	B-factors(Å ²)	Q<0.9
2	NAG	A	274	14/15	0.96	0.11	12,16,18,22	0
2	NAG	A	276	15/15	0.97	0.08	6,10,15,20	0
2	NAG	A	275	14/15	0.98	0.06	2,6,12,14	0

6.5 Other polymers [i](#)

There are no such residues in this entry.