



# Full wwPDB X-ray Structure Validation Report ⓘ

Jun 17, 2024 – 05:47 AM EDT

PDB ID : 5HVO  
Title : Structure of *Aspergillus fumigatus* trehalose-6-phosphate synthase B in complex with UDP and validoxylamine A  
Authors : Miao, Y.; Brennan, R.G.  
Deposited on : 2016-01-28  
Resolution : 2.47 Å (reported)

This is a Full wwPDB X-ray Structure Validation Report for a publicly released PDB entry.

We welcome your comments at [validation@mail.wwpdb.org](mailto:validation@mail.wwpdb.org)

A user guide is available at

<https://www.wwpdb.org/validation/2017/XrayValidationReportHelp>

with specific help available everywhere you see the ⓘ symbol.

The types of validation reports are described at

<http://www.wwpdb.org/validation/2017/FAQs#types>.

---

The following versions of software and data (see [references ⓘ](#)) were used in the production of this report:

MolProbity : 4.02b-467  
Mogul : 1.8.5 (274361), CSD as541be (2020)  
Xtriage (Phenix) : 1.13  
EDS : 2.37.1  
buster-report : 1.1.7 (2018)  
Percentile statistics : 20191225.v01 (using entries in the PDB archive December 25th 2019)  
Refmac : 5.8.0158  
CCP4 : 7.0.044 (Gargrove)  
Ideal geometry (proteins) : Engh & Huber (2001)  
Ideal geometry (DNA, RNA) : Parkinson et al. (1996)  
Validation Pipeline (wwPDB-VP) : 2.37.1

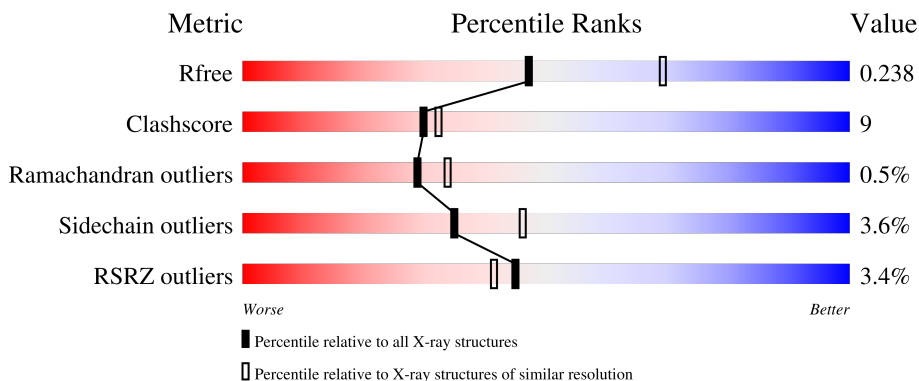
# 1 Overall quality at a glance

The following experimental techniques were used to determine the structure:

*X-RAY DIFFRACTION*



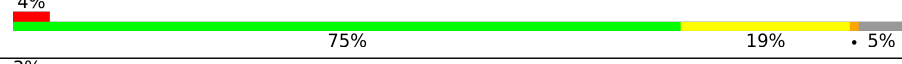

The reported resolution of this entry is 2.47 Å.

Percentile scores (ranging between 0-100) for global validation metrics of the entry are shown in the following graphic. The table shows the number of entries on which the scores are based.



Metric	Whole archive (#Entries)	Similar resolution (#Entries, resolution range(Å))
$R_{free}$	130704	1544 (2.48-2.44)
Clashscore	141614	1613 (2.48-2.44)
Ramachandran outliers	138981	1598 (2.48-2.44)
Sidechain outliers	138945	1598 (2.48-2.44)
RSRZ outliers	127900	1523 (2.48-2.44)

The table below summarises the geometric issues observed across the polymeric chains and their fit to the electron density. The red, orange, yellow and green segments of the lower bar indicate the fraction of residues that contain outliers for  $\geq 3$ , 2, 1 and 0 types of geometric quality criteria respectively. A grey segment represents the fraction of residues that are not modelled. The numeric value for each fraction is indicated below the corresponding segment, with a dot representing fractions  $\leq 5\%$ . The upper red bar (where present) indicates the fraction of residues that have poor fit to the electron density. The numeric value is given above the bar.

Mol	Chain	Length	Quality of chain
1	A	479	 2% 73% 21% • •
1	B	479	 4% 72% 22% • 5%
1	C	479	 4% 75% 19% • 5%
1	D	479	 3% 75% 19% • 5%

## 2 Entry composition [i](#)

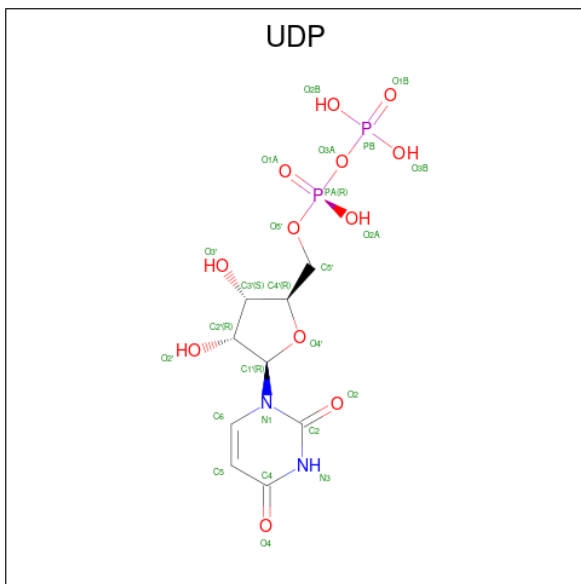
There are 4 unique types of molecules in this entry. The entry contains 15112 atoms, of which 144 are hydrogens and 0 are deuteriums.

In the tables below, the ZeroOcc column contains the number of atoms modelled with zero occupancy, the AltConf column contains the number of residues with at least one atom in alternate conformation and the Trace column contains the number of residues modelled with at most 2 atoms.

- Molecule 1 is a protein called Alpha,alpha-trehalose-phosphate synthase (UDP-forming).

Mol	Chain	Residues	Atoms					ZeroOcc	AltConf	Trace
			Total	C	N	O	S			
1	A	459	Total 3673	C 2366	N 628	O 667	S 12	0	0	0
1	B	454	Total 3632	C 2343	N 619	O 658	S 12	0	0	0
1	C	454	Total 3631	C 2343	N 618	O 658	S 12	0	0	0
1	D	456	Total 3648	C 2352	N 623	O 661	S 12	0	0	0

- Molecule 2 is URIDINE-5'-DIPHOSPHATE (three-letter code: UDP) (formula: C<sub>9</sub>H<sub>14</sub>N<sub>2</sub>O<sub>12</sub>P<sub>2</sub>).



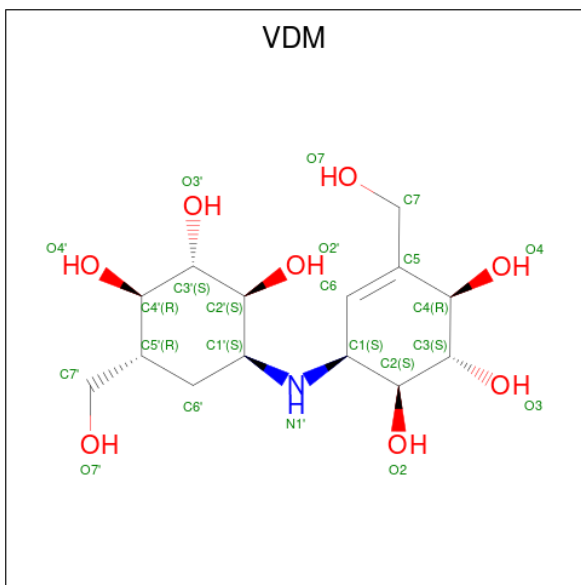
Mol	Chain	Residues	Atoms					ZeroOcc	AltConf	
			Total	C	H	N	O			P
2	A	1	Total 36	C 9	H 11	N 2	O 12	P 2	0	0
2	B	1	Total 36	C 9	H 11	N 2	O 12	P 2	0	0

*Continued on next page...*

Continued from previous page...

Mol	Chain	Residues	Atoms					ZeroOcc	AltConf	
2	C	1	Total	C	H	N	O	P	0	0
			36	9	11	2	12	2		
2	D	1	Total	C	H	N	O	P	0	0
			36	9	11	2	12	2		

- Molecule 3 is (1S,2S,3R,6S)-4-(HYDROXYMETHYL)-6-{[(1S,2S,3S,4R,5R)-2,3,4-TRIHYDROXY-5-(HYDROXYMETHYL)CYCLOHEXYL]AMINO}CYCLOHEX-4-ENE-1,2,3-TRIOL (three-letter code: VDM) (formula: C<sub>14</sub>H<sub>25</sub>NO<sub>8</sub>).



Mol	Chain	Residues	Atoms					ZeroOcc	AltConf
3	A	1	Total	C	H	N	O	0	0
			48	14	25	1	8		
3	B	1	Total	C	H	N	O	0	0
			48	14	25	1	8		
3	C	1	Total	C	H	N	O	0	0
			48	14	25	1	8		
3	D	1	Total	C	H	N	O	0	0
			48	14	25	1	8		

- Molecule 4 is water.

Mol	Chain	Residues	Atoms		ZeroOcc	AltConf
4	A	51	Total	O	0	0
			51	51		
4	B	45	Total	O	0	0
			45	45		

Continued on next page...

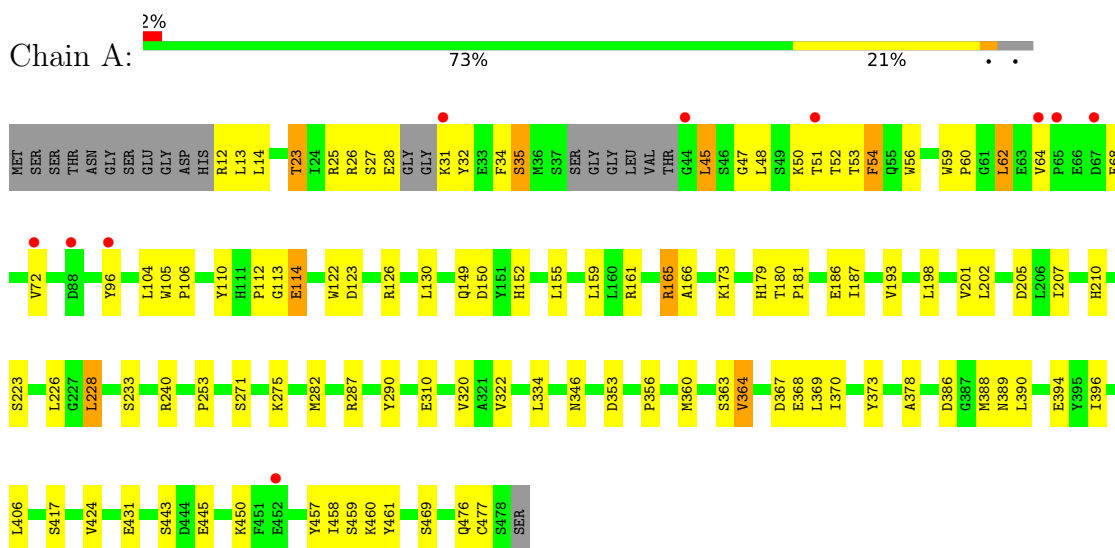
*Continued from previous page...*

<b>Mol</b>	<b>Chain</b>	<b>Residues</b>	<b>Atoms</b>		<b>ZeroOcc</b>	<b>AltConf</b>
4	C	42	Total	O	0	0
			42	42		
4	D	54	Total	O	0	0
			54	54		

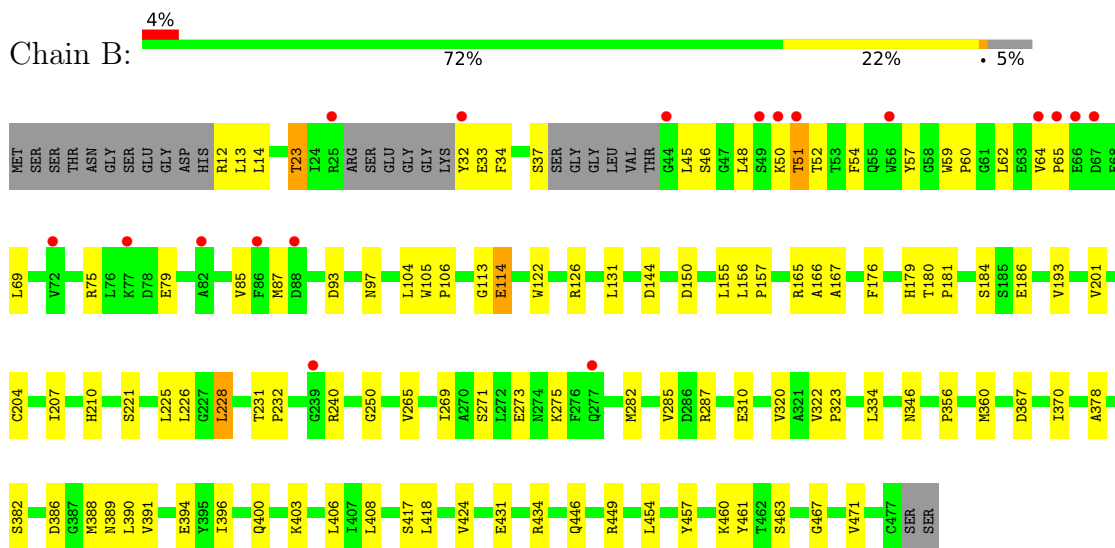
### 3 Residue-property plots [i](#)

These plots are drawn for all protein, RNA, DNA and oligosaccharide chains in the entry. The first graphic for a chain summarises the proportions of the various outlier classes displayed in the second graphic. The second graphic shows the sequence view annotated by issues in geometry and electron density. Residues are color-coded according to the number of geometric quality criteria for which they contain at least one outlier: green = 0, yellow = 1, orange = 2 and red = 3 or more. A red dot above a residue indicates a poor fit to the electron density ( $RSRZ > 2$ ). Stretches of 2 or more consecutive residues without any outlier are shown as a green connector. Residues present in the sample, but not in the model, are shown in grey.

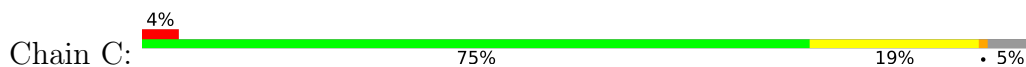
- Molecule 1: Alpha,alpha-trehalose-phosphate synthase (UDP-forming)

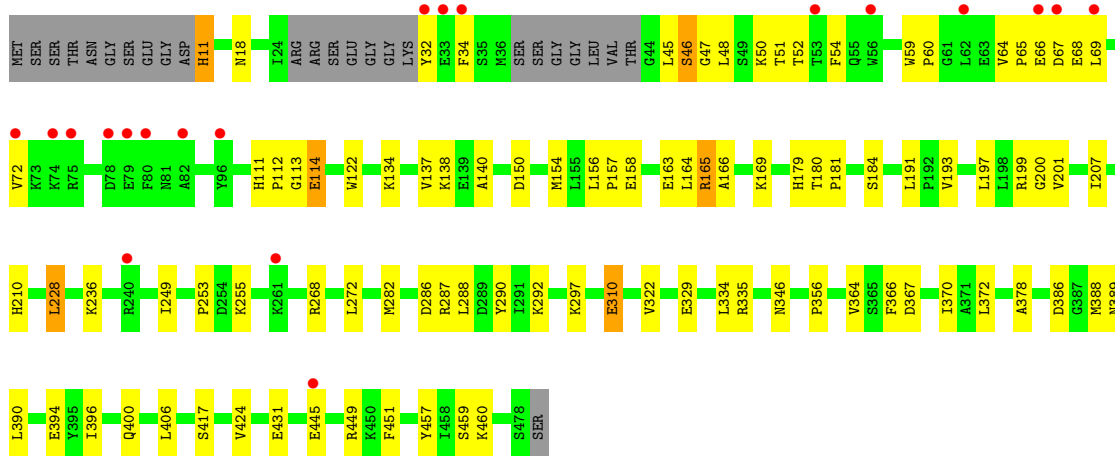


- Molecule 1: Alpha,alpha-trehalose-phosphate synthase (UDP-forming)

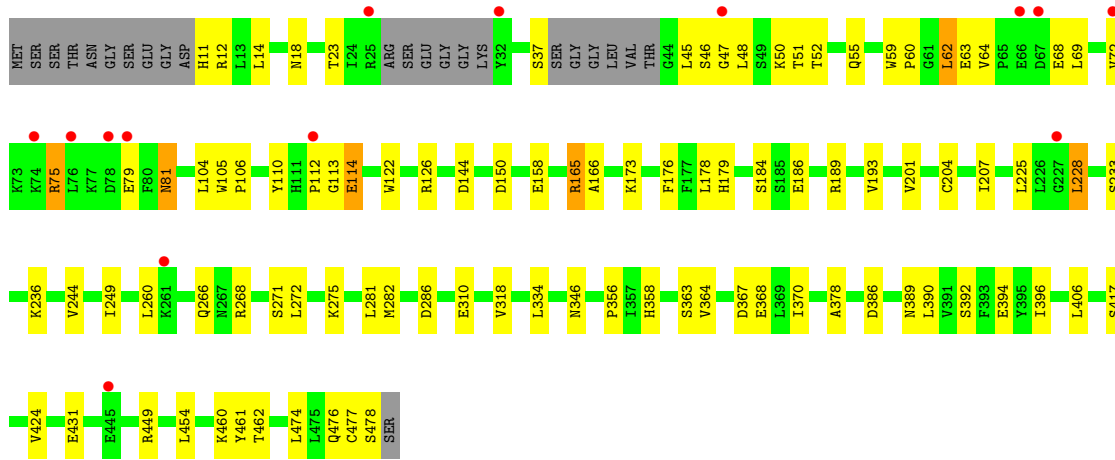
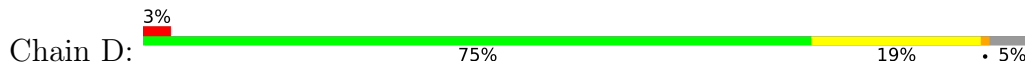


- Molecule 1: Alpha,alpha-trehalose-phosphate synthase (UDP-forming)





● Molecule 1: Alpha,alpha-trehalose-phosphate synthase (UDP-forming)



## 4 Data and refinement statistics

Property	Value	Source
Space group	P 2 21 21	Depositor
Cell constants a, b, c, $\alpha$ , $\beta$ , $\gamma$	88.28Å 130.58Å 184.81Å 90.00° 90.00° 90.00°	Depositor
Resolution (Å)	39.83 – 2.47 47.12 – 2.47	Depositor EDS
% Data completeness (in resolution range)	96.2 (39.83-2.47) 92.4 (47.12-2.47)	Depositor EDS
$R_{merge}$	0.11	Depositor
$R_{sym}$	(Not available)	Depositor
$\langle I/\sigma(I) \rangle$ <sup>1</sup>	2.68 (at 2.48Å)	Xtrriage
Refinement program	PHENIX 1.8.4_1496	Depositor
R, $R_{free}$	0.200 , 0.236 0.204 , 0.238	Depositor DCC
$R_{free}$ test set	2000 reflections (2.68%)	wwPDB-VP
Wilson B-factor (Å <sup>2</sup> )	45.1	Xtrriage
Anisotropy	0.074	Xtrriage
Bulk solvent $k_{sol}$ (e/Å <sup>3</sup> ), $B_{sol}$ (Å <sup>2</sup> )	0.36 , 44.4	EDS
L-test for twinning <sup>2</sup>	$\langle  L  \rangle = 0.50$ , $\langle L^2 \rangle = 0.33$	Xtrriage
Estimated twinning fraction	No twinning to report.	Xtrriage
$F_o, F_c$ correlation	0.94	EDS
Total number of atoms	15112	wwPDB-VP
Average B, all atoms (Å <sup>2</sup> )	51.0	wwPDB-VP

Xtrriage's analysis on translational NCS is as follows: *The analyses of the Patterson function reveals a significant off-origin peak that is 28.87 % of the origin peak, indicating pseudo-translational symmetry. The chance of finding a peak of this or larger height randomly in a structure without pseudo-translational symmetry is equal to 1.7106e-03. The detected translational NCS is most likely also responsible for the elevated intensity ratio.*

<sup>1</sup>Intensities estimated from amplitudes.

<sup>2</sup>Theoretical values of  $\langle |L| \rangle$ ,  $\langle L^2 \rangle$  for acentric reflections are 0.5, 0.333 respectively for untwinned datasets, and 0.375, 0.2 for perfectly twinned datasets.



## 5 Model quality [i](#)

### 5.1 Standard geometry [i](#)

Bond lengths and bond angles in the following residue types are not validated in this section: VDM, UDP

The Z score for a bond length (or angle) is the number of standard deviations the observed value is removed from the expected value. A bond length (or angle) with  $|Z| > 5$  is considered an outlier worth inspection. RMSZ is the root-mean-square of all Z scores of the bond lengths (or angles).

Mol	Chain	Bond lengths		Bond angles	
		RMSZ	# Z  >5	RMSZ	# Z  >5
1	A	0.44	0/3762	0.59	0/5091
1	B	0.40	0/3721	0.57	0/5038
1	C	0.40	0/3721	0.56	0/5039
1	D	0.42	0/3738	0.58	0/5061
All	All	0.41	0/14942	0.57	0/20229

There are no bond length outliers.

There are no bond angle outliers.

There are no chirality outliers.

There are no planarity outliers.

### 5.2 Too-close contacts [i](#)

In the following table, the Non-H and H(model) columns list the number of non-hydrogen atoms and hydrogen atoms in the chain respectively. The H(added) column lists the number of hydrogen atoms added and optimized by MolProbity. The Clashes column lists the number of clashes within the asymmetric unit, whereas Symm-Clashes lists symmetry-related clashes.

Mol	Chain	Non-H	H(model)	H(added)	Clashes	Symm-Clashes
1	A	3673	0	3662	71	0
1	B	3632	0	3620	73	0
1	C	3631	0	3614	70	0
1	D	3648	0	3632	66	0
2	A	25	11	10	2	0
2	B	25	11	10	0	0
2	C	25	11	10	1	0
2	D	25	11	10	0	0
3	A	23	25	25	2	0

*Continued on next page...*

*Continued from previous page...*

Mol	Chain	Non-H	H(model)	H(added)	Clashes	Symm-Clashes
3	B	23	25	25	1	0
3	C	23	25	25	2	0
3	D	23	25	25	1	0
4	A	51	0	0	2	0
4	B	45	0	0	6	0
4	C	42	0	0	6	0
4	D	54	0	0	8	0
All	All	14968	144	14668	277	0

The all-atom clashscore is defined as the number of clashes found per 1000 atoms (including hydrogen atoms). The all-atom clashscore for this structure is 9.

All (277) close contacts within the same asymmetric unit are listed below, sorted by their clash magnitude.

Atom-1	Atom-2	Interatomic distance (Å)	Clash overlap (Å)
1:C:11:HIS:HB3	1:C:52:THR:HG22	1.27	1.06
1:C:51:THR:HG23	1:C:52:THR:HG23	1.47	0.96
1:A:424:VAL:HG23	1:A:431:GLU:HG2	1.47	0.93
1:D:477:CYS:SG	4:D:650:HOH:O	2.26	0.93
1:D:51:THR:HG23	1:D:52:THR:HG23	1.49	0.93
1:A:51:THR:HG23	1:A:52:THR:HG23	1.51	0.92
1:B:33:GLU:OE2	4:B:601:HOH:O	1.87	0.91
1:A:179:HIS:HB3	3:A:502:VDM:H6'2	1.50	0.91
1:D:476:GLN:NE2	4:D:601:HOH:O	1.86	0.90
1:C:179:HIS:HB3	3:C:502:VDM:H6'2	1.55	0.89
1:B:179:HIS:HB3	3:B:502:VDM:H6'2	1.52	0.89
1:A:186:GLU:OE2	4:A:601:HOH:O	1.90	0.88
1:B:14:LEU:HD22	1:B:57:TYR:HE2	1.38	0.86
1:B:424:VAL:HG23	1:B:431:GLU:HG2	1.56	0.86
1:C:424:VAL:HG23	1:C:431:GLU:HG2	1.58	0.85
1:D:424:VAL:HG23	1:D:431:GLU:HG2	1.61	0.82
1:B:282:MET:HG2	1:B:378:ALA:HB3	1.63	0.80
1:D:158:GLU:OE1	4:D:602:HOH:O	2.02	0.77
1:A:210:HIS:HB3	1:A:388:MET:HE2	1.68	0.76
1:A:23:THR:HG23	1:A:35:SER:HB3	1.68	0.75
1:B:446:GLN:OE1	4:B:602:HOH:O	2.05	0.74
1:C:45:LEU:HD12	1:C:46:SER:N	2.03	0.73
1:D:179:HIS:HB3	3:D:502:VDM:H6'2	1.71	0.73
1:A:424:VAL:CG2	1:A:431:GLU:HG2	2.19	0.71
1:C:201:VAL:HG12	1:C:207:ILE:HD13	1.72	0.71
1:C:11:HIS:HB3	1:C:52:THR:CG2	2.16	0.70

*Continued on next page...*

*Continued from previous page...*

Atom-1	Atom-2	Interatomic distance (Å)	Clash overlap (Å)
1:C:201:VAL:HG12	1:C:207:ILE:CD1	2.23	0.69
1:C:449:ARG:NH1	4:C:604:HOH:O	2.25	0.69
1:B:32:TYR:HB3	1:B:34:PHE:CE2	2.28	0.69
1:D:281:LEU:HD11	1:D:318:VAL:HG23	1.74	0.68
1:A:123:ASP:OD1	1:A:126:ARG:NH2	2.26	0.68
1:C:282:MET:HG2	1:C:378:ALA:HB3	1.74	0.68
1:A:23:THR:CG2	1:A:35:SER:HB3	2.24	0.67
1:B:201:VAL:HG12	1:B:207:ILE:CD1	2.24	0.67
1:B:45:LEU:HD12	1:B:46:SER:N	2.08	0.67
1:D:178:LEU:O	4:D:603:HOH:O	2.13	0.66
1:C:137:VAL:O	1:C:169:LYS:NZ	2.26	0.66
1:C:310:GLU:OE2	4:C:601:HOH:O	2.14	0.65
1:B:32:TYR:HB3	1:B:34:PHE:HE2	1.62	0.65
1:C:66:GLU:HA	1:C:69:LEU:HG	1.78	0.65
1:B:14:LEU:HD22	1:B:57:TYR:CE2	2.28	0.64
1:D:286:ASP:OD1	4:D:604:HOH:O	2.15	0.64
1:B:186:GLU:OE2	4:B:603:HOH:O	2.14	0.64
1:D:64:VAL:HG12	1:D:69:LEU:HD23	1.79	0.64
1:A:210:HIS:HB3	1:A:388:MET:CE	2.28	0.63
1:B:346:ASN:OD1	1:B:356:PRO:HD2	1.99	0.62
1:B:460:LYS:NZ	1:D:476:GLN:O	2.23	0.62
1:D:64:VAL:CG1	1:D:69:LEU:HD23	2.29	0.62
1:B:59:TRP:CD1	1:B:60:PRO:HD2	2.34	0.62
1:A:460:LYS:HD3	1:A:461:TYR:CE2	2.34	0.62
1:B:210:HIS:HB3	1:B:388:MET:HE1	1.81	0.61
1:B:201:VAL:HG12	1:B:207:ILE:HD13	1.83	0.61
1:D:281:LEU:HD11	1:D:318:VAL:CG2	2.31	0.61
1:D:11:HIS:HA	1:D:52:THR:HG22	1.82	0.60
1:D:59:TRP:CD1	1:D:60:PRO:HD2	2.35	0.60
1:A:96:TYR:HE1	1:A:152:HIS:HE2	1.48	0.60
1:A:45:LEU:HD13	1:A:56:TRP:HZ3	1.68	0.59
1:D:201:VAL:HG12	1:D:207:ILE:CD1	2.32	0.59
1:A:27:SER:HB2	1:A:31:LYS:HB2	1.85	0.58
1:D:260:LEU:O	1:D:266:GLN:NE2	2.20	0.58
1:A:48:LEU:N	1:A:48:LEU:HD23	2.19	0.58
1:C:199:ARG:NE	4:C:606:HOH:O	2.29	0.58
1:C:367:ASP:O	1:C:370:ILE:HG22	2.05	0.57
1:A:460:LYS:HD3	1:A:461:TYR:CZ	2.40	0.57
1:B:460:LYS:HD3	1:B:461:TYR:CZ	2.38	0.57
1:A:23:THR:HG23	1:A:35:SER:CB	2.35	0.57
1:D:201:VAL:HG12	1:D:207:ILE:HD13	1.85	0.57

*Continued on next page...*

*Continued from previous page...*

Atom-1	Atom-2	Interatomic distance (Å)	Clash overlap (Å)
1:A:68:GLU:O	1:A:72:VAL:HG23	2.04	0.57
1:D:62:LEU:HD22	1:D:63:GLU:O	2.05	0.57
1:D:449:ARG:NH1	4:D:609:HOH:O	2.34	0.56
1:D:462:THR:HA	4:D:614:HOH:O	2.05	0.56
1:C:154:MET:HE3	1:C:201:VAL:HG21	1.88	0.56
1:A:390:LEU:O	1:A:394:GLU:HG3	2.05	0.56
1:A:450:LYS:NZ	4:A:602:HOH:O	2.12	0.56
1:A:226:LEU:HB2	1:A:228:LEU:HD22	1.88	0.55
1:C:417:SER:HB3	1:C:457:TYR:CZ	2.41	0.55
1:A:417:SER:HB3	1:A:457:TYR:CZ	2.41	0.55
1:A:59:TRP:CD1	1:A:60:PRO:HD2	2.42	0.55
1:D:249:ILE:HG23	1:D:390:LEU:HD21	1.89	0.55
1:C:140:ALA:O	1:C:169:LYS:NZ	2.33	0.54
1:D:68:GLU:O	1:D:72:VAL:HG23	2.06	0.54
1:A:32:TYR:HB3	1:A:34:PHE:CE2	2.42	0.54
1:B:75:ARG:NH2	1:B:79:GLU:OE1	2.40	0.54
1:A:173:LYS:HE2	1:A:477:CYS:O	2.08	0.54
1:C:11:HIS:CB	1:C:52:THR:HG22	2.19	0.54
1:A:165:ARG:O	1:A:166:ALA:HB3	2.07	0.53
1:C:287:ARG:HA	1:C:322:VAL:HB	1.90	0.53
1:B:417:SER:HB3	1:B:457:TYR:CZ	2.43	0.53
2:A:501:UDP:O1B	3:A:502:VDM:N1'	2.38	0.53
1:B:165:ARG:O	1:B:166:ALA:HB3	2.08	0.53
1:C:122:TRP:CE2	1:C:193:VAL:HG11	2.42	0.53
1:A:424:VAL:HG23	1:A:431:GLU:CG	2.30	0.53
1:D:390:LEU:O	1:D:394:GLU:HG3	2.09	0.53
1:A:27:SER:O	1:A:31:LYS:N	2.41	0.53
1:A:282:MET:HG2	1:A:378:ALA:HB3	1.90	0.53
1:D:50:LYS:NZ	1:D:50:LYS:HB3	2.23	0.53
1:C:134:LYS:HA	1:C:137:VAL:HG12	1.90	0.52
1:D:367:ASP:O	1:D:370:ILE:HG22	2.09	0.52
1:A:110:TYR:CD2	1:A:187:ILE:HG13	2.45	0.52
1:D:122:TRP:CE2	1:D:193:VAL:HG11	2.45	0.52
1:D:45:LEU:HD12	1:D:46:SER:N	2.25	0.52
1:A:130:LEU:HA	1:A:159:LEU:HD13	1.91	0.52
1:B:269:ILE:HG22	1:B:273:GLU:OE1	2.10	0.52
1:D:282:MET:HG2	1:D:378:ALA:HB3	1.91	0.52
1:B:396:ILE:HD13	1:B:454:LEU:HB3	1.90	0.51
1:D:334:LEU:HG	1:D:334:LEU:O	2.08	0.51
1:C:346:ASN:OD1	1:C:356:PRO:HD2	2.08	0.51
1:D:460:LYS:HD3	1:D:461:TYR:CE2	2.46	0.51

*Continued on next page...*

*Continued from previous page...*

Atom-1	Atom-2	Interatomic distance (Å)	Clash overlap (Å)
1:C:48:LEU:N	1:C:48:LEU:HD23	2.26	0.51
1:A:201:VAL:HG12	1:A:207:ILE:HD13	1.92	0.51
1:D:346:ASN:OD1	1:D:356:PRO:HD2	2.11	0.50
1:B:285:VAL:O	1:B:391:VAL:HG21	2.11	0.50
1:C:255:LYS:HE2	1:C:366:PHE:CE1	2.46	0.50
1:A:13:LEU:O	1:A:54:PHE:HA	2.12	0.50
1:B:265:VAL:O	1:B:269:ILE:HG13	2.12	0.50
1:B:460:LYS:HZ2	1:D:478:SER:N	2.10	0.50
1:D:268:ARG:O	1:D:272:LEU:HG	2.11	0.50
1:B:226:LEU:HB2	1:B:228:LEU:HD22	1.94	0.50
1:A:47:GLY:C	1:A:48:LEU:HD23	2.32	0.49
1:C:113:GLY:O	1:C:114:GLU:HB2	2.12	0.49
1:D:165:ARG:O	1:D:166:ALA:HB3	2.13	0.49
1:B:210:HIS:HB3	1:B:388:MET:CE	2.42	0.49
1:C:165:ARG:O	1:C:166:ALA:HB3	2.11	0.49
1:C:396:ILE:HD11	1:C:406:LEU:HD22	1.94	0.49
1:B:287:ARG:HA	1:B:322:VAL:HB	1.94	0.49
1:A:320:VAL:HG22	1:A:360:MET:HE1	1.95	0.49
1:A:126:ARG:HG2	1:A:155:LEU:CD1	2.42	0.49
1:B:105:TRP:N	1:B:106:PRO:HD2	2.27	0.49
1:D:113:GLY:O	1:D:114:GLU:HB2	2.13	0.49
1:D:271:SER:OG	1:D:275:LYS:HE3	2.13	0.49
1:D:18:ASN:O	1:D:59:TRP:HB3	2.13	0.49
1:D:364:VAL:HG22	1:D:368:GLU:HB3	1.94	0.49
1:A:443:SER:OG	1:A:445:GLU:HG2	2.13	0.48
1:A:45:LEU:HD13	1:A:56:TRP:CZ3	2.48	0.48
1:A:110:TYR:O	1:A:112:PRO:HD3	2.13	0.48
1:C:288:LEU:HD21	1:C:335:ARG:HG3	1.95	0.48
1:A:96:TYR:HE1	1:A:152:HIS:NE2	2.11	0.48
1:B:231:THR:HB	1:B:232:PRO:CD	2.44	0.48
1:A:287:ARG:HA	1:A:322:VAL:HB	1.96	0.48
1:B:60:PRO:HD3	1:B:85:VAL:O	2.14	0.48
1:C:32:TYR:HB3	1:C:34:PHE:CE2	2.48	0.47
1:C:199:ARG:CD	4:C:606:HOH:O	2.62	0.47
1:D:48:LEU:HD23	1:D:48:LEU:N	2.28	0.47
1:A:346:ASN:OD1	1:A:356:PRO:HD2	2.14	0.47
1:B:287:ARG:HB3	1:B:322:VAL:HB	1.95	0.47
1:C:394:GLU:OE2	2:C:501:UDP:O3'	2.32	0.47
1:B:12:ARG:HD3	1:B:144:ASP:OD1	2.14	0.47
1:B:287:ARG:CB	1:B:322:VAL:HB	2.43	0.47
1:C:287:ARG:HG3	1:C:287:ARG:NH1	2.29	0.47

*Continued on next page...*

*Continued from previous page...*

Atom-1	Atom-2	Interatomic distance (Å)	Clash overlap (Å)
1:C:287:ARG:HG3	1:C:287:ARG:HH11	1.80	0.47
1:C:68:GLU:O	1:C:72:VAL:HG23	2.14	0.47
1:A:161:ARG:NH2	1:A:205:ASP:OD2	2.40	0.47
1:A:458:ILE:HG13	1:A:459:SER:N	2.29	0.47
1:B:23:THR:HG22	1:B:37:SER:OG	2.15	0.47
1:B:122:TRP:CE2	1:B:193:VAL:HG11	2.50	0.47
1:A:26:ARG:NH2	1:A:68:GLU:OE2	2.41	0.47
1:A:476:GLN:O	1:C:460:LYS:NZ	2.48	0.47
1:C:158:GLU:HB2	1:C:200:GLY:HA2	1.97	0.47
1:B:113:GLY:O	1:B:114:GLU:CB	2.63	0.47
1:C:45:LEU:HD12	1:C:45:LEU:C	2.35	0.47
1:A:201:VAL:HG12	1:A:207:ILE:CD1	2.45	0.47
1:B:367:ASP:O	1:B:370:ILE:HG22	2.15	0.47
1:B:467:GLY:O	1:B:471:VAL:HG22	2.15	0.47
1:C:156:LEU:HB3	1:C:157:PRO:HD3	1.97	0.47
1:D:173:LYS:HE2	1:D:477:CYS:O	2.15	0.47
1:A:25:ARG:O	1:A:32:TYR:HA	2.14	0.46
1:C:137:VAL:HG21	1:C:163:GLU:HB3	1.97	0.46
1:C:180:THR:HB	1:C:181:PRO:CD	2.46	0.46
1:D:186:GLU:OE1	1:D:189:ARG:NH2	2.34	0.46
1:B:323:PRO:HA	4:B:620:HOH:O	2.14	0.46
1:D:176:PHE:HB2	1:D:204:CYS:SG	2.56	0.46
1:D:476:GLN:CD	4:D:601:HOH:O	2.41	0.46
1:D:59:TRP:HA	1:D:60:PRO:HD3	1.82	0.46
1:B:460:LYS:HZ2	1:D:477:CYS:C	2.19	0.46
1:A:369:LEU:HD11	1:A:373:TYR:CZ	2.51	0.46
1:C:191:LEU:HD21	1:C:197:LEU:HD22	1.98	0.46
1:A:180:THR:HB	1:A:181:PRO:CD	2.46	0.46
1:B:48:LEU:HD23	1:B:48:LEU:N	2.31	0.46
1:C:134:LYS:O	1:C:137:VAL:HG12	2.16	0.46
1:B:201:VAL:HG12	1:B:207:ILE:HD11	1.97	0.45
1:C:134:LYS:O	1:C:138:LYS:HG3	2.16	0.45
1:D:113:GLY:O	1:D:114:GLU:CB	2.65	0.45
1:C:11:HIS:O	1:C:52:THR:HB	2.15	0.45
1:D:474:LEU:O	1:D:477:CYS:HB2	2.16	0.45
1:A:45:LEU:CD2	1:A:149:GLN:NE2	2.79	0.45
1:B:45:LEU:HD12	1:B:45:LEU:C	2.35	0.45
1:D:12:ARG:HD3	1:D:144:ASP:OD1	2.16	0.45
1:C:111:HIS:CG	1:C:112:PRO:HD2	2.52	0.45
1:B:417:SER:OG	4:B:604:HOH:O	2.21	0.45
1:C:18:ASN:O	1:C:59:TRP:HB3	2.17	0.45

*Continued on next page...*

*Continued from previous page...*

Atom-1	Atom-2	Interatomic distance (Å)	Clash overlap (Å)
1:A:59:TRP:HA	1:A:60:PRO:HD3	1.71	0.44
1:A:364:VAL:CG2	1:A:368:GLU:HG2	2.48	0.44
1:B:93:ASP:O	1:B:97:ASN:HB2	2.17	0.44
1:B:390:LEU:O	1:B:394:GLU:HG3	2.17	0.44
1:D:228:LEU:HG	1:D:236:LYS:O	2.17	0.44
1:A:396:ILE:HD11	1:A:406:LEU:HD22	1.98	0.44
1:B:87:MET:HG2	1:B:131:LEU:HD12	1.99	0.44
1:A:12:ARG:HD3	1:A:53:THR:HG23	1.98	0.44
1:C:59:TRP:CD1	1:C:60:PRO:HD2	2.52	0.44
1:D:396:ILE:HD13	1:D:454:LEU:HB3	2.00	0.44
1:D:62:LEU:HD13	1:D:62:LEU:O	2.18	0.44
1:A:367:ASP:O	1:A:370:ILE:HG22	2.17	0.44
1:B:390:LEU:HD23	1:B:390:LEU:HA	1.75	0.44
1:C:286:ASP:HB3	1:C:292:LYS:HG3	2.00	0.43
1:B:287:ARG:HB2	1:B:322:VAL:O	2.19	0.43
1:C:201:VAL:CG1	1:C:207:ILE:HD13	2.46	0.43
1:C:249:ILE:HG23	1:C:390:LEU:HD21	2.00	0.43
1:D:104:LEU:HD23	1:D:104:LEU:HA	1.90	0.43
1:D:392:SER:HB2	1:D:406:LEU:HD21	2.01	0.43
1:B:64:VAL:HA	1:B:65:PRO:HD3	1.87	0.43
1:A:287:ARG:NH1	1:A:287:ARG:HG3	2.34	0.43
1:B:180:THR:HB	1:B:181:PRO:CD	2.49	0.43
1:C:445:GLU:CD	1:C:445:GLU:H	2.22	0.43
1:D:105:TRP:N	1:D:106:PRO:HD2	2.34	0.43
1:B:320:VAL:HG22	1:B:360:MET:HE3	1.99	0.43
1:C:47:GLY:C	1:C:48:LEU:HD23	2.39	0.43
1:C:390:LEU:O	1:C:394:GLU:HG3	2.19	0.43
1:C:417:SER:HB3	1:C:457:TYR:CE1	2.53	0.43
1:B:240:ARG:HE	1:B:240:ARG:HB2	1.70	0.43
1:C:199:ARG:HD3	4:C:606:HOH:O	2.19	0.43
1:B:51:THR:HG23	1:B:52:THR:HG23	2.01	0.42
1:A:253:PRO:HG3	1:A:459:SER:HA	2.02	0.42
1:A:271:SER:OG	1:A:275:LYS:HE3	2.19	0.42
1:B:59:TRP:HA	1:B:60:PRO:HD3	1.89	0.42
1:B:126:ARG:HG2	1:B:155:LEU:CD1	2.49	0.42
1:B:104:LEU:HD23	1:B:104:LEU:HA	1.84	0.42
1:B:271:SER:OG	1:B:275:LYS:HE3	2.19	0.42
1:B:449:ARG:NH1	4:B:612:HOH:O	2.53	0.42
1:C:290:TYR:N	1:C:334:LEU:HD22	2.34	0.42
1:C:329:GLU:OE1	4:C:602:HOH:O	2.22	0.42
1:B:13:LEU:O	1:B:54:PHE:HA	2.20	0.42

*Continued on next page...*

*Continued from previous page...*

Atom-1	Atom-2	Interatomic distance (Å)	Clash overlap (Å)
1:A:394:GLU:OE2	2:A:501:UDP:O3'	2.37	0.42
1:C:210:HIS:HB3	1:C:388:MET:HE2	2.01	0.42
1:D:233:SER:HA	1:D:244:VAL:O	2.19	0.42
1:A:287:ARG:HG3	1:A:287:ARG:HH11	1.85	0.42
1:B:225:LEU:HD23	1:B:225:LEU:HA	1.79	0.42
1:D:122:TRP:CD2	1:D:193:VAL:HG11	2.55	0.42
1:D:45:LEU:HD12	1:D:45:LEU:C	2.41	0.42
1:B:156:LEU:HB3	1:B:157:PRO:HD3	2.01	0.41
1:A:113:GLY:O	1:A:114:GLU:CB	2.68	0.41
1:B:250:GLY:O	1:B:463:SER:HB3	2.21	0.41
1:C:113:GLY:O	1:C:114:GLU:CB	2.68	0.41
1:A:50:LYS:HB3	1:A:50:LYS:NZ	2.36	0.41
1:B:221:SER:O	1:B:225:LEU:HB2	2.20	0.41
1:D:47:GLY:C	1:D:48:LEU:HD23	2.40	0.41
1:D:460:LYS:HD3	1:D:461:TYR:CZ	2.55	0.41
1:A:198:LEU:O	1:A:202:LEU:HG	2.20	0.41
1:C:297:LYS:HB2	1:C:297:LYS:HE3	1.85	0.41
1:D:23:THR:HG23	1:D:37:SER:OG	2.20	0.41
1:A:45:LEU:CD2	1:A:149:GLN:HE21	2.33	0.41
1:B:400:GLN:O	1:B:403:LYS:HE2	2.20	0.41
1:C:228:LEU:HG	1:C:236:LYS:O	2.20	0.41
1:C:253:PRO:HG3	1:C:459:SER:HA	2.03	0.41
1:C:390:LEU:HA	1:C:390:LEU:HD23	1.74	0.41
1:B:113:GLY:O	1:B:114:GLU:HB2	2.20	0.41
1:B:176:PHE:HB2	1:B:204:CYS:SG	2.60	0.41
1:D:225:LEU:HA	1:D:225:LEU:HD23	1.80	0.41
1:C:164:LEU:HA	1:C:164:LEU:HD23	1.81	0.41
1:C:268:ARG:O	1:C:272:LEU:HG	2.21	0.41
1:D:55:GLN:OE1	1:D:81:ASN:ND2	2.44	0.41
1:D:122:TRP:CE2	1:D:126:ARG:HD2	2.56	0.41
1:A:62:LEU:CD1	1:A:64:VAL:CG2	2.99	0.41
1:A:105:TRP:N	1:A:106:PRO:HD2	2.36	0.41
1:A:290:TYR:N	1:A:334:LEU:HD22	2.36	0.41
1:A:334:LEU:O	1:A:334:LEU:HG	2.20	0.41
1:C:59:TRP:HA	1:C:60:PRO:HD3	1.83	0.41
1:C:179:HIS:HB3	3:C:502:VDM:C6'	2.38	0.41
1:C:400:GLN:HA	1:C:451:PHE:CZ	2.55	0.41
1:D:75:ARG:NH2	1:D:79:GLU:OE1	2.47	0.41
1:B:334:LEU:O	1:B:334:LEU:HG	2.21	0.40
1:D:110:TYR:O	1:D:112:PRO:HD3	2.21	0.40
1:A:62:LEU:CD1	1:A:64:VAL:HG23	2.51	0.40

*Continued on next page...*



Continued from previous page...

Atom-1	Atom-2	Interatomic distance (Å)	Clash overlap (Å)
1:A:122:TRP:CE2	1:A:193:VAL:HG11	2.56	0.40
1:B:165:ARG:C	1:B:167:ALA:H	2.24	0.40
1:B:396:ILE:HD11	1:B:406:LEU:HD22	2.02	0.40
1:B:408:LEU:HD22	1:B:418:LEU:HD12	2.04	0.40
1:C:64:VAL:HA	1:C:65:PRO:HD3	1.93	0.40

There are no symmetry-related clashes.

## 5.3 Torsion angles [i](#)

### 5.3.1 Protein backbone [i](#)

In the following table, the Percentiles column shows the percent Ramachandran outliers of the chain as a percentile score with respect to all X-ray entries followed by that with respect to entries of similar resolution.

The Analysed column shows the number of residues for which the backbone conformation was analysed, and the total number of residues.

Mol	Chain	Analysed	Favoured	Allowed	Outliers	Percentiles
1	A	453/479 (95%)	442 (98%)	8 (2%)	3 (1%)	22 25
1	B	448/479 (94%)	437 (98%)	9 (2%)	2 (0%)	34 41
1	C	448/479 (94%)	434 (97%)	12 (3%)	2 (0%)	34 41
1	D	450/479 (94%)	436 (97%)	12 (3%)	2 (0%)	34 41
All	All	1799/1916 (94%)	1749 (97%)	41 (2%)	9 (0%)	29 34

All (9) Ramachandran outliers are listed below:

Mol	Chain	Res	Type
1	B	114	GLU
1	D	114	GLU
1	A	114	GLU
1	C	114	GLU
1	B	389	ASN
1	C	389	ASN
1	D	389	ASN
1	A	233	SER
1	A	389	ASN

### 5.3.2 Protein sidechains [i](#)

In the following table, the Percentiles column shows the percent sidechain outliers of the chain as a percentile score with respect to all X-ray entries followed by that with respect to entries of similar resolution.

The Analysed column shows the number of residues for which the sidechain conformation was analysed, and the total number of residues.

Mol	Chain	Analysed	Rotameric	Outliers	Percentiles	
1	A	397/411 (97%)	378 (95%)	19 (5%)	25	33
1	B	392/411 (95%)	380 (97%)	12 (3%)	40	52
1	C	392/411 (95%)	379 (97%)	13 (3%)	38	49
1	D	394/411 (96%)	381 (97%)	13 (3%)	38	49
All	All	1575/1644 (96%)	1518 (96%)	57 (4%)	35	46

All (57) residues with a non-rotameric sidechain are listed below:

Mol	Chain	Res	Type
1	A	14	LEU
1	A	23	THR
1	A	28	GLU
1	A	35	SER
1	A	45	LEU
1	A	54	PHE
1	A	62	LEU
1	A	104	LEU
1	A	150	ASP
1	A	165	ARG
1	A	223	SER
1	A	228	LEU
1	A	240	ARG
1	A	310	GLU
1	A	353	ASP
1	A	363	SER
1	A	364	VAL
1	A	386	ASP
1	A	469	SER
1	B	23	THR
1	B	50	LYS
1	B	51	THR
1	B	62	LEU
1	B	69	LEU

*Continued on next page...*

*Continued from previous page...*

Mol	Chain	Res	Type
1	B	150	ASP
1	B	184	SER
1	B	228	LEU
1	B	310	GLU
1	B	382	SER
1	B	386	ASP
1	B	434	ARG
1	C	11	HIS
1	C	46	SER
1	C	50	LYS
1	C	54	PHE
1	C	67	ASP
1	C	150	ASP
1	C	165	ARG
1	C	184	SER
1	C	228	LEU
1	C	310	GLU
1	C	364	VAL
1	C	372	LEU
1	C	386	ASP
1	D	14	LEU
1	D	62	LEU
1	D	75	ARG
1	D	81	ASN
1	D	150	ASP
1	D	165	ARG
1	D	184	SER
1	D	228	LEU
1	D	310	GLU
1	D	358	HIS
1	D	363	SER
1	D	386	ASP
1	D	417	SER

Sometimes sidechains can be flipped to improve hydrogen bonding and reduce clashes. All (1) such sidechains are listed below:

Mol	Chain	Res	Type
1	A	149	GLN

### 5.3.3 RNA [i](#)

There are no RNA molecules in this entry.

## 5.4 Non-standard residues in protein, DNA, RNA chains [i](#)

There are no non-standard protein/DNA/RNA residues in this entry.

## 5.5 Carbohydrates [i](#)

There are no monosaccharides in this entry.

## 5.6 Ligand geometry [i](#)

8 ligands are modelled in this entry.

In the following table, the Counts columns list the number of bonds (or angles) for which Mogul statistics could be retrieved, the number of bonds (or angles) that are observed in the model and the number of bonds (or angles) that are defined in the Chemical Component Dictionary. The Link column lists molecule types, if any, to which the group is linked. The Z score for a bond length (or angle) is the number of standard deviations the observed value is removed from the expected value. A bond length (or angle) with  $|Z| > 2$  is considered an outlier worth inspection. RMSZ is the root-mean-square of all Z scores of the bond lengths (or angles).

Mol	Type	Chain	Res	Link	Bond lengths			Bond angles		
					Counts	RMSZ	# Z  > 2	Counts	RMSZ	# Z  > 2
3	VDM	A	502	-	24,24,24	2.09	5 (20%)	25,35,35	2.97	8 (32%)
3	VDM	D	502	-	24,24,24	1.93	4 (16%)	25,35,35	2.76	9 (36%)
3	VDM	B	502	-	24,24,24	2.06	4 (16%)	25,35,35	2.80	8 (32%)
3	VDM	C	502	-	24,24,24	1.96	5 (20%)	25,35,35	2.75	8 (32%)
2	UDP	A	501	-	24,26,26	3.44	11 (45%)	37,40,40	1.64	6 (16%)
2	UDP	D	501	-	24,26,26	3.46	11 (45%)	37,40,40	1.60	7 (18%)
2	UDP	C	501	-	24,26,26	3.36	9 (37%)	37,40,40	1.74	6 (16%)
2	UDP	B	501	-	24,26,26	3.44	9 (37%)	37,40,40	1.69	7 (18%)

In the following table, the Chirals column lists the number of chiral outliers, the number of chiral centers analysed, the number of these observed in the model and the number defined in the Chemical Component Dictionary. Similar counts are reported in the Torsion and Rings columns. '-' means no outliers of that kind were identified.

Mol	Type	Chain	Res	Link	Chirals	Torsions	Rings
3	VDM	A	502	-	-	4/8/48/48	0/2/2/2
3	VDM	D	502	-	-	4/8/48/48	0/2/2/2
3	VDM	B	502	-	-	3/8/48/48	0/2/2/2
3	VDM	C	502	-	-	3/8/48/48	0/2/2/2
2	UDP	A	501	-	-	7/16/32/32	0/2/2/2
2	UDP	D	501	-	-	7/16/32/32	0/2/2/2
2	UDP	C	501	-	-	7/16/32/32	0/2/2/2
2	UDP	B	501	-	-	7/16/32/32	0/2/2/2

All (58) bond length outliers are listed below:

Mol	Chain	Res	Type	Atoms	Z	Observed(Å)	Ideal(Å)
2	A	501	UDP	O4'-C1'	8.74	1.62	1.42
2	D	501	UDP	O4'-C1'	8.70	1.62	1.42
2	B	501	UDP	O4'-C1'	8.55	1.62	1.42
2	C	501	UDP	O4'-C1'	8.50	1.62	1.42
3	A	502	VDM	C5'-C4'	7.58	1.63	1.53
3	B	502	VDM	C5'-C4'	7.21	1.62	1.53
2	B	501	UDP	O4'-C4'	-6.56	1.30	1.45
3	C	502	VDM	C5'-C4'	6.48	1.61	1.53
2	C	501	UDP	O4'-C4'	-6.48	1.30	1.45
3	D	502	VDM	C5'-C4'	6.40	1.61	1.53
2	D	501	UDP	O4'-C4'	-6.39	1.30	1.45
2	A	501	UDP	O4'-C4'	-6.29	1.30	1.45
2	D	501	UDP	C2'-C1'	-6.22	1.33	1.53
2	B	501	UDP	C2'-C1'	-6.19	1.33	1.53
2	C	501	UDP	C2'-C1'	-6.15	1.33	1.53
2	A	501	UDP	C2'-C1'	-6.15	1.33	1.53
2	D	501	UDP	C6-C5	5.60	1.48	1.35
2	B	501	UDP	C2-N1	5.45	1.47	1.38
2	B	501	UDP	C6-C5	5.38	1.47	1.35
2	A	501	UDP	C6-C5	5.21	1.47	1.35
2	C	501	UDP	C2-N1	5.16	1.46	1.38
2	A	501	UDP	C2-N3	5.09	1.47	1.38
2	C	501	UDP	C6-C5	5.08	1.46	1.35
2	D	501	UDP	C2-N1	5.08	1.46	1.38
2	A	501	UDP	C2-N1	4.91	1.46	1.38
2	B	501	UDP	C2-N3	4.88	1.46	1.38
2	D	501	UDP	C2-N3	4.88	1.46	1.38
2	C	501	UDP	C2-N3	4.69	1.46	1.38
2	B	501	UDP	O3'-C3'	-4.17	1.33	1.43

*Continued on next page...*

Continued from previous page...

Mol	Chain	Res	Type	Atoms	Z	Observed(Å)	Ideal(Å)
2	A	501	UDP	O3'-C3'	-4.14	1.33	1.43
2	D	501	UDP	O3'-C3'	-3.96	1.33	1.43
3	B	502	VDM	C6'-C5'	3.89	1.62	1.53
3	D	502	VDM	C6'-C5'	3.79	1.62	1.53
3	A	502	VDM	C6'-C5'	3.59	1.61	1.53
2	C	501	UDP	O3'-C3'	-3.58	1.34	1.43
3	C	502	VDM	C6'-C5'	3.58	1.61	1.53
3	B	502	VDM	C2'-C1'	-2.96	1.46	1.52
3	D	502	VDM	C2'-C1'	-2.86	1.46	1.52
3	C	502	VDM	C2'-C1'	-2.82	1.46	1.52
3	C	502	VDM	C3'-C2'	-2.72	1.45	1.52
3	A	502	VDM	C2'-C1'	-2.67	1.46	1.52
2	C	501	UDP	C3'-C4'	2.58	1.59	1.53
3	B	502	VDM	C3'-C2'	-2.56	1.45	1.52
2	A	501	UDP	C3'-C4'	2.51	1.59	1.53
2	A	501	UDP	C1'-N1	-2.46	1.40	1.47
2	D	501	UDP	C3'-C4'	2.43	1.59	1.53
3	D	502	VDM	C3'-C2'	-2.42	1.46	1.52
2	B	501	UDP	C1'-N1	-2.38	1.40	1.47
2	C	501	UDP	C1'-N1	-2.36	1.40	1.47
2	D	501	UDP	C6-N1	2.30	1.43	1.38
2	D	501	UDP	C1'-N1	-2.28	1.41	1.47
3	A	502	VDM	C3'-C2'	-2.21	1.46	1.52
2	B	501	UDP	O2'-C2'	2.13	1.48	1.43
3	A	502	VDM	C4-C5	-2.12	1.49	1.51
2	A	501	UDP	C6-N1	2.08	1.43	1.38
2	D	501	UDP	O2'-C2'	2.08	1.47	1.43
3	C	502	VDM	C7'-C5'	-2.07	1.48	1.52
2	A	501	UDP	C4-N3	2.03	1.42	1.38

All (59) bond angle outliers are listed below:

Mol	Chain	Res	Type	Atoms	Z	Observed(°)	Ideal(°)
3	A	502	VDM	C5'-C6'-C1'	9.38	120.24	108.49
3	B	502	VDM	C5'-C6'-C1'	9.30	120.15	108.49
3	C	502	VDM	C5'-C6'-C1'	8.63	119.30	108.49
3	D	502	VDM	C5'-C6'-C1'	7.42	117.80	108.49
3	D	502	VDM	C6'-C5'-C4'	-6.84	102.30	110.17
3	A	502	VDM	C6'-C5'-C4'	-6.08	103.17	110.17
3	C	502	VDM	C6'-C5'-C4'	-5.84	103.45	110.17
2	C	501	UDP	C4-N3-C2	-5.53	119.28	126.58
2	B	501	UDP	C4-N3-C2	-5.06	119.91	126.58

Continued on next page...

*Continued from previous page...*

Mol	Chain	Res	Type	Atoms	Z	Observed(°)	Ideal(°)
3	D	502	VDM	C3'-C2'-C1'	5.02	118.37	111.02
2	A	501	UDP	C4-N3-C2	-4.98	120.01	126.58
2	C	501	UDP	N3-C2-N1	4.85	121.33	114.89
2	A	501	UDP	N3-C2-N1	4.84	121.31	114.89
2	B	501	UDP	N3-C2-N1	4.82	121.29	114.89
2	D	501	UDP	C4-N3-C2	-4.75	120.32	126.58
2	D	501	UDP	N3-C2-N1	4.69	121.12	114.89
3	B	502	VDM	C3'-C2'-C1'	4.68	117.88	111.02
3	A	502	VDM	C3'-C2'-C1'	4.64	117.82	111.02
3	B	502	VDM	C6'-C5'-C4'	-4.60	104.87	110.17
3	A	502	VDM	C1-N1'-C1'	4.60	124.79	116.47
3	D	502	VDM	C1-N1'-C1'	4.21	124.09	116.47
3	B	502	VDM	C1-N1'-C1'	4.12	123.92	116.47
3	C	502	VDM	O4'-C4'-C5'	-3.79	103.67	110.08
3	A	502	VDM	O2-C2-C1	3.71	116.57	109.12
3	C	502	VDM	C3'-C2'-C1'	3.63	116.34	111.02
2	C	501	UDP	C5-C4-N3	3.56	120.16	114.84
3	C	502	VDM	C1-N1'-C1'	3.54	122.87	116.47
3	D	502	VDM	O4'-C4'-C5'	-3.42	104.31	110.08
2	D	501	UDP	C5-C4-N3	3.34	119.83	114.84
2	B	501	UDP	C5-C4-N3	3.01	119.34	114.84
2	C	501	UDP	O4-C4-C5	-2.97	119.93	125.16
2	A	501	UDP	O2-C2-N1	-2.91	118.92	122.79
2	A	501	UDP	C5-C4-N3	2.86	119.12	114.84
3	A	502	VDM	O7-C7-C5	-2.82	105.74	112.50
3	B	502	VDM	C6-C1-N1'	-2.81	106.47	110.68
2	A	501	UDP	O4-C4-C5	-2.78	120.27	125.16
3	C	502	VDM	O2-C2-C3	-2.71	104.09	110.35
3	B	502	VDM	O2-C2-C3	-2.68	104.16	110.35
2	C	501	UDP	O2-C2-N1	-2.67	119.23	122.79
2	B	501	UDP	O4-C4-C5	-2.59	120.61	125.16
2	D	501	UDP	O4-C4-C5	-2.53	120.71	125.16
2	B	501	UDP	O2-C2-N1	-2.44	119.54	122.79
2	D	501	UDP	O2-C2-N1	-2.38	119.62	122.79
3	D	502	VDM	O2-C2-C1	2.37	113.87	109.12
2	B	501	UDP	O3B-PB-O3A	2.27	112.25	104.64
3	A	502	VDM	O4-C4-C5	-2.18	106.61	110.82
2	B	501	UDP	PA-O3A-PB	-2.15	125.46	132.83
3	C	502	VDM	O2-C2-C1	2.14	113.42	109.12
2	D	501	UDP	O3B-PB-O3A	2.13	111.77	104.64
2	A	501	UDP	O4'-C1'-N1	2.12	113.20	108.36
3	A	502	VDM	O2-C2-C3	-2.11	105.48	110.35

*Continued on next page...*

*Continued from previous page...*

Mol	Chain	Res	Type	Atoms	Z	Observed(°)	Ideal(°)
3	B	502	VDM	C6'-C1'-N1'	-2.06	107.62	112.21
3	D	502	VDM	C4'-C3'-C2'	2.06	114.42	110.82
3	D	502	VDM	O2'-C2'-C3'	-2.05	105.62	110.35
3	B	502	VDM	C6'-C1'-C2'	2.03	114.12	109.72
3	D	502	VDM	C6'-C1'-C2'	2.02	114.12	109.72
2	D	501	UDP	C6-N1-C2	-2.02	118.41	120.99
3	C	502	VDM	C4'-C3'-C2'	2.01	114.32	110.82
2	C	501	UDP	PA-O3A-PB	-2.00	125.95	132.83

There are no chirality outliers.

All (42) torsion outliers are listed below:

Mol	Chain	Res	Type	Atoms
2	A	501	UDP	C2'-C1'-N1-C2
2	A	501	UDP	C2'-C1'-N1-C6
2	A	501	UDP	O4'-C4'-C5'-O5'
2	B	501	UDP	C2'-C1'-N1-C2
2	B	501	UDP	C2'-C1'-N1-C6
2	C	501	UDP	C2'-C1'-N1-C2
2	C	501	UDP	C2'-C1'-N1-C6
2	D	501	UDP	C2'-C1'-N1-C2
2	D	501	UDP	C2'-C1'-N1-C6
3	A	502	VDM	C6'-C1'-N1'-C1
3	B	502	VDM	C6'-C1'-N1'-C1
3	C	502	VDM	C6'-C1'-N1'-C1
3	D	502	VDM	C6'-C1'-N1'-C1
2	B	501	UDP	C3'-C4'-C5'-O5'
2	B	501	UDP	O4'-C4'-C5'-O5'
2	C	501	UDP	C3'-C4'-C5'-O5'
2	C	501	UDP	O4'-C4'-C5'-O5'
2	A	501	UDP	C3'-C4'-C5'-O5'
3	A	502	VDM	C6'-C5'-C7'-O7'
2	A	501	UDP	PB-O3A-PA-O5'
2	B	501	UDP	PB-O3A-PA-O5'
2	C	501	UDP	PB-O3A-PA-O5'
2	D	501	UDP	PB-O3A-PA-O5'
2	D	501	UDP	O4'-C4'-C5'-O5'
3	A	502	VDM	C6-C1-N1'-C1'
3	B	502	VDM	C6-C1-N1'-C1'
3	C	502	VDM	C6-C1-N1'-C1'
3	D	502	VDM	C6-C1-N1'-C1'
2	C	501	UDP	O4'-C1'-N1-C6

*Continued on next page...*



*Continued from previous page...*

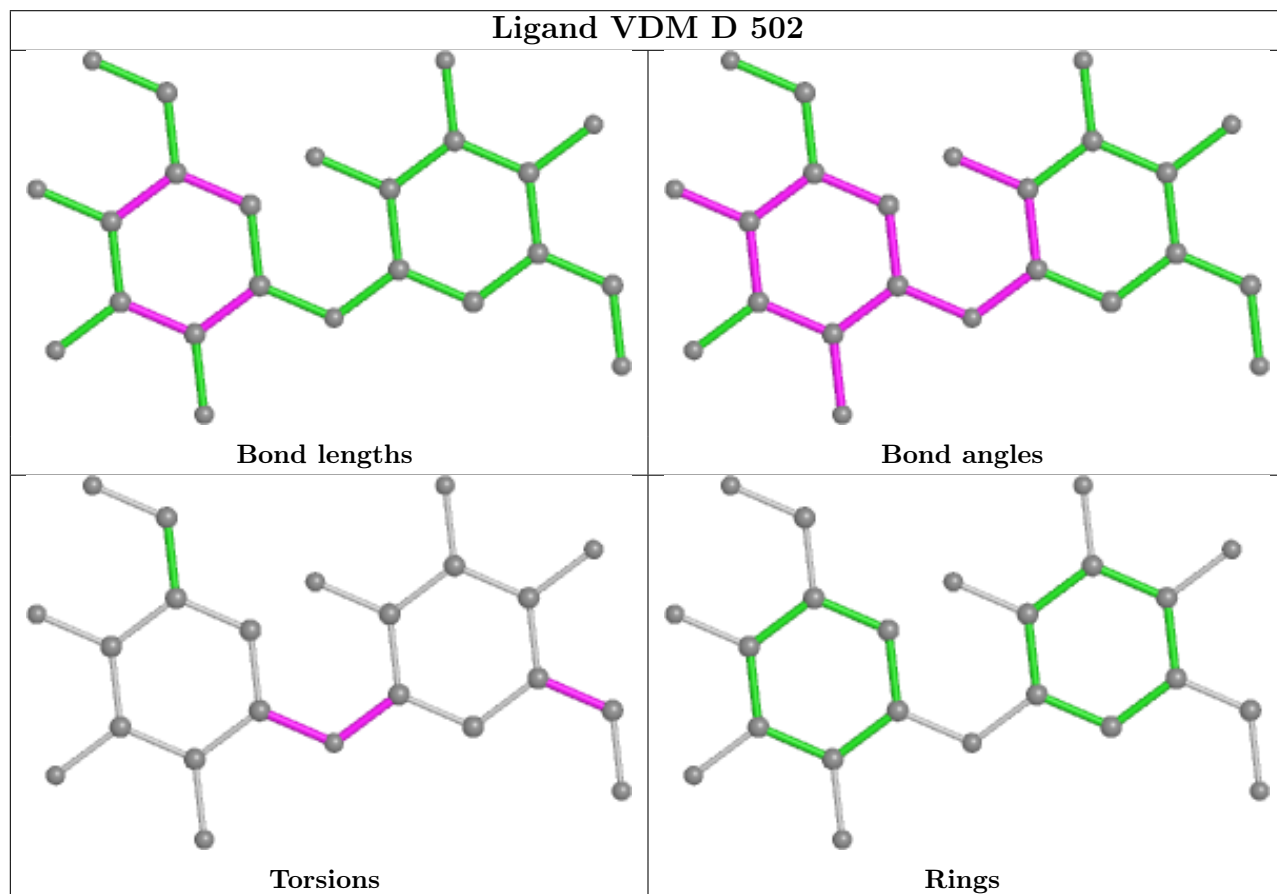
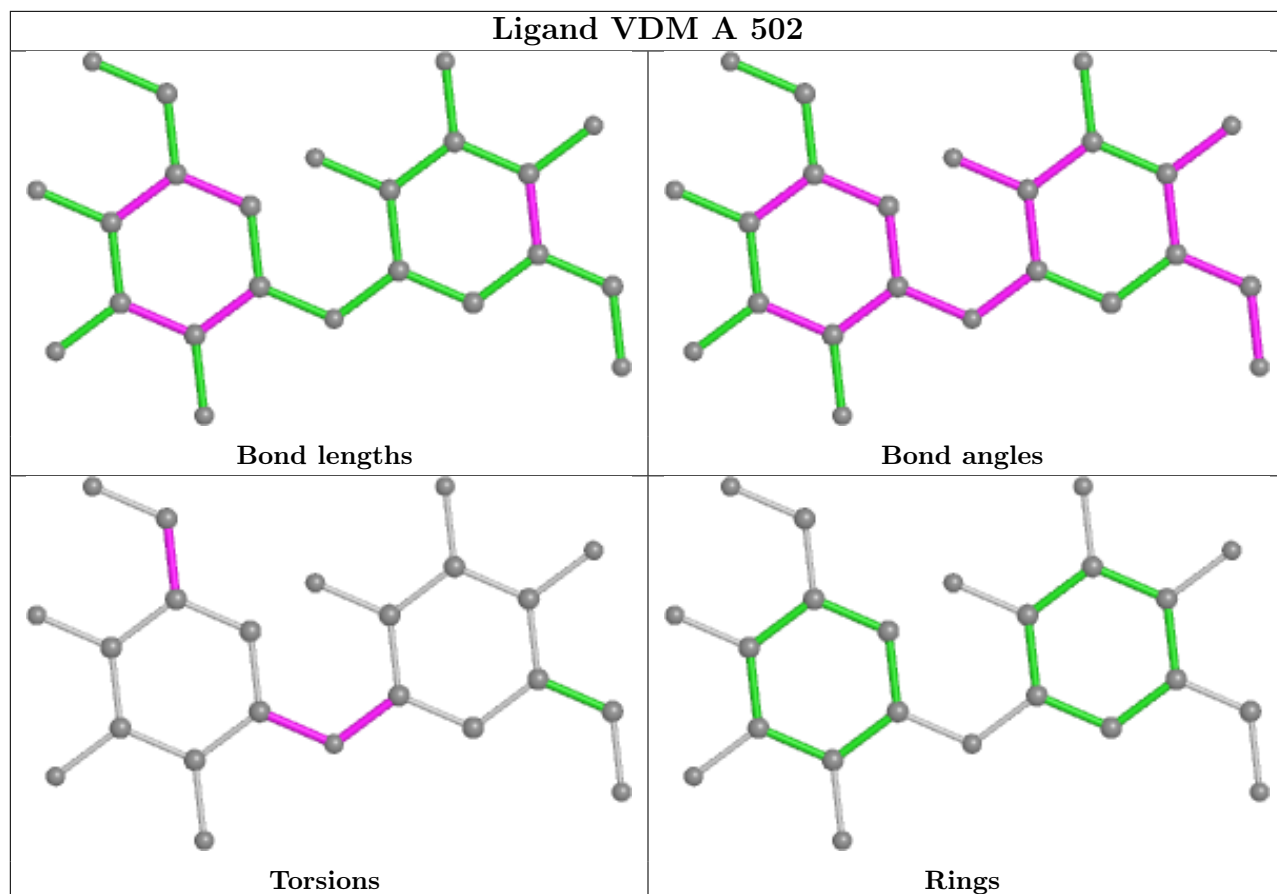
Mol	Chain	Res	Type	Atoms
2	D	501	UDP	O4'-C1'-N1-C6
3	A	502	VDM	C2'-C1'-N1'-C1
3	B	502	VDM	C2'-C1'-N1'-C1
3	D	502	VDM	C2'-C1'-N1'-C1
2	A	501	UDP	O4'-C1'-N1-C6
2	B	501	UDP	O4'-C1'-N1-C6
2	C	501	UDP	O4'-C1'-N1-C2
2	D	501	UDP	O4'-C1'-N1-C2
2	D	501	UDP	C3'-C4'-C5'-O5'
3	D	502	VDM	C4-C5-C7-O7
2	A	501	UDP	O4'-C1'-N1-C2
2	B	501	UDP	O4'-C1'-N1-C2
3	C	502	VDM	C2'-C1'-N1'-C1

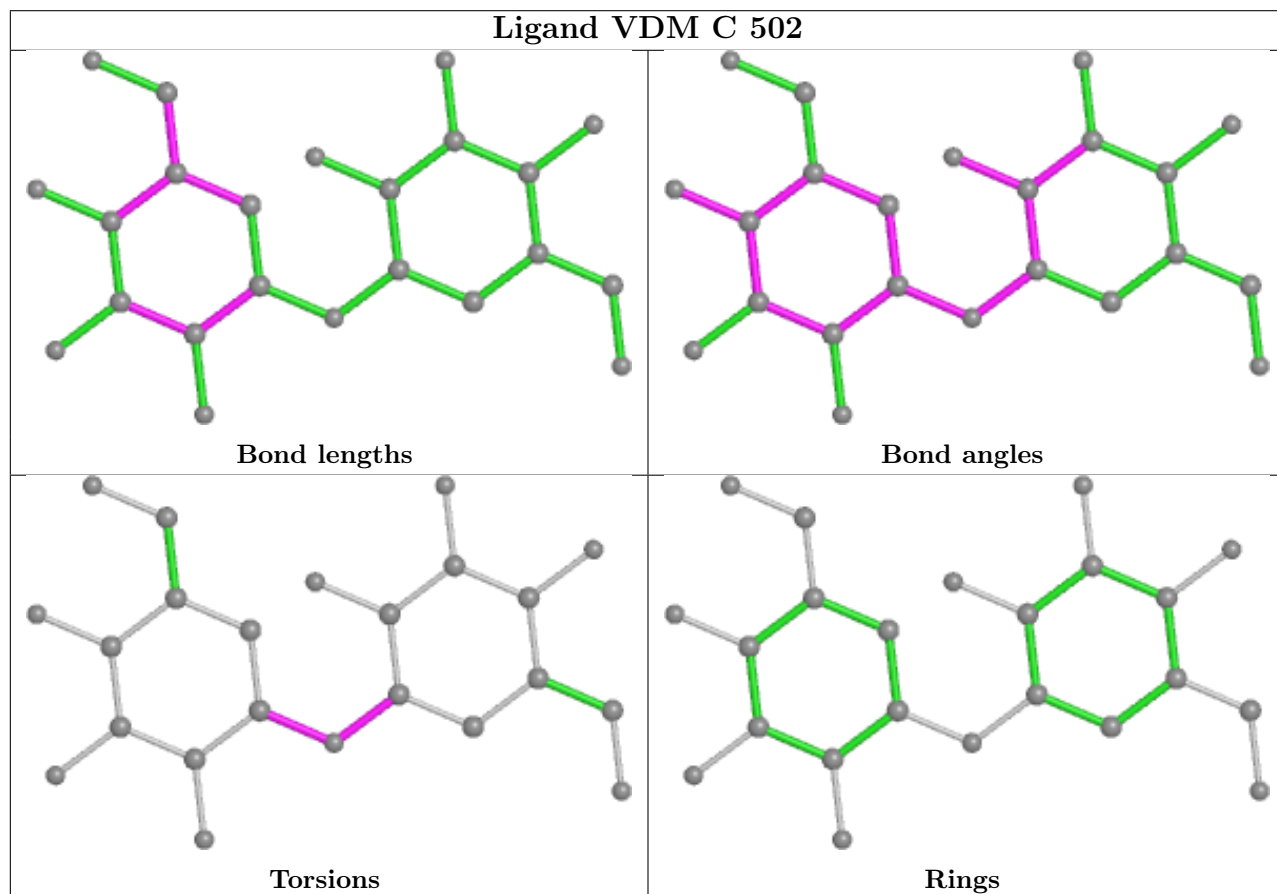
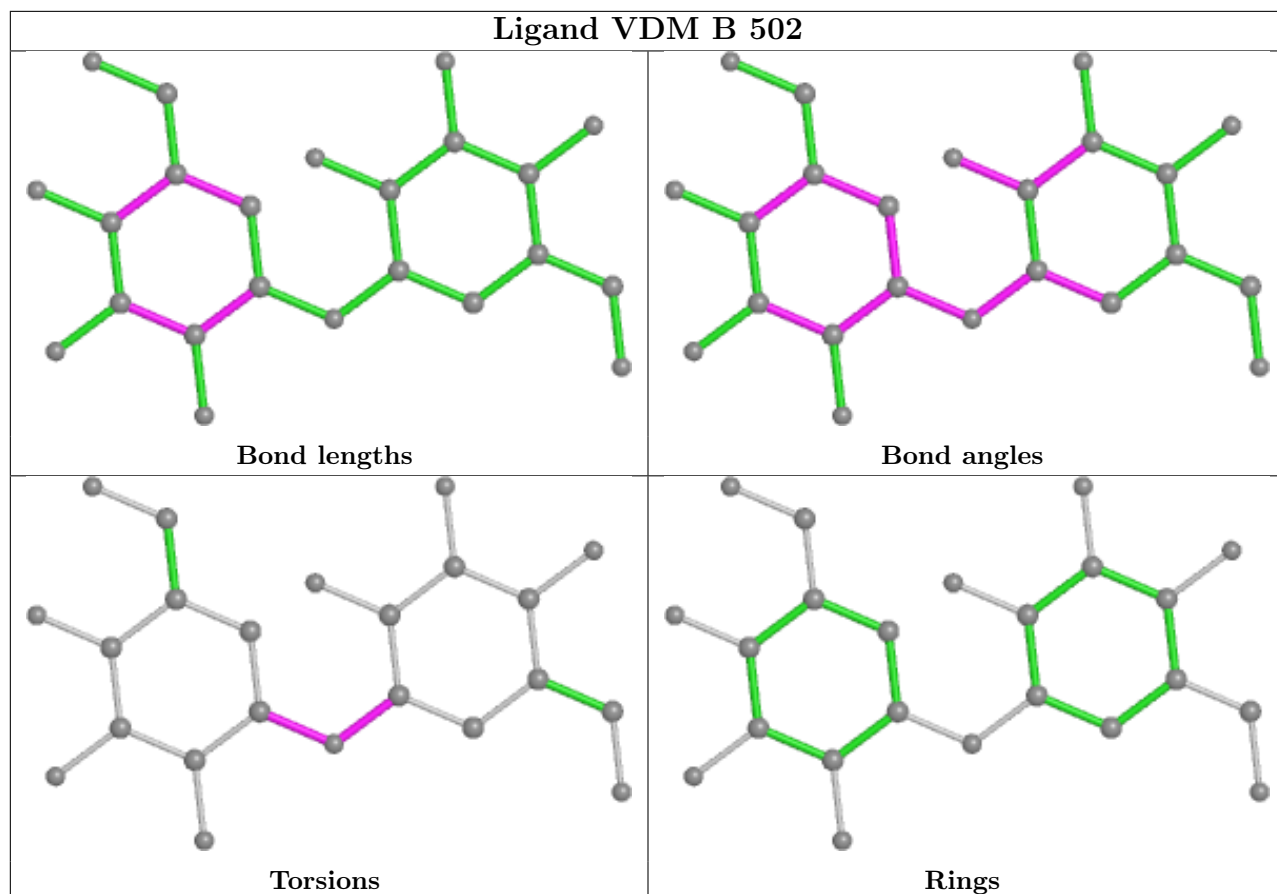
There are no ring outliers.

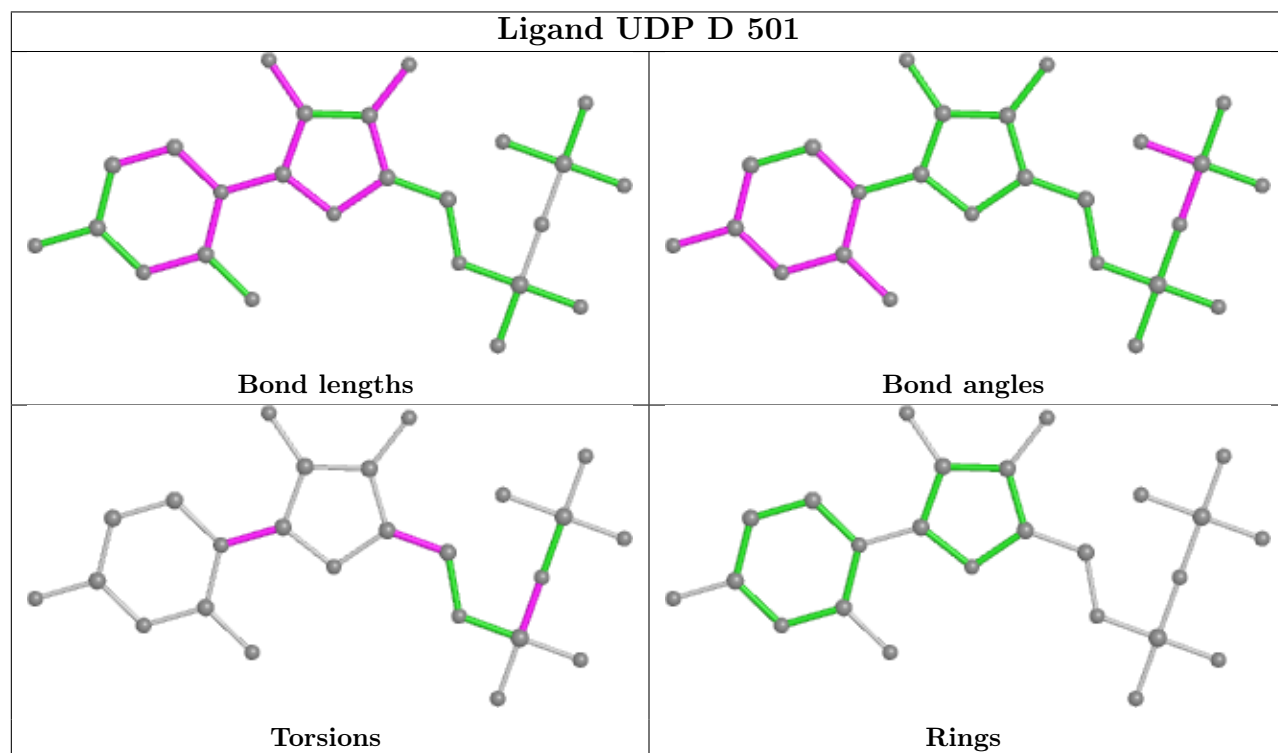
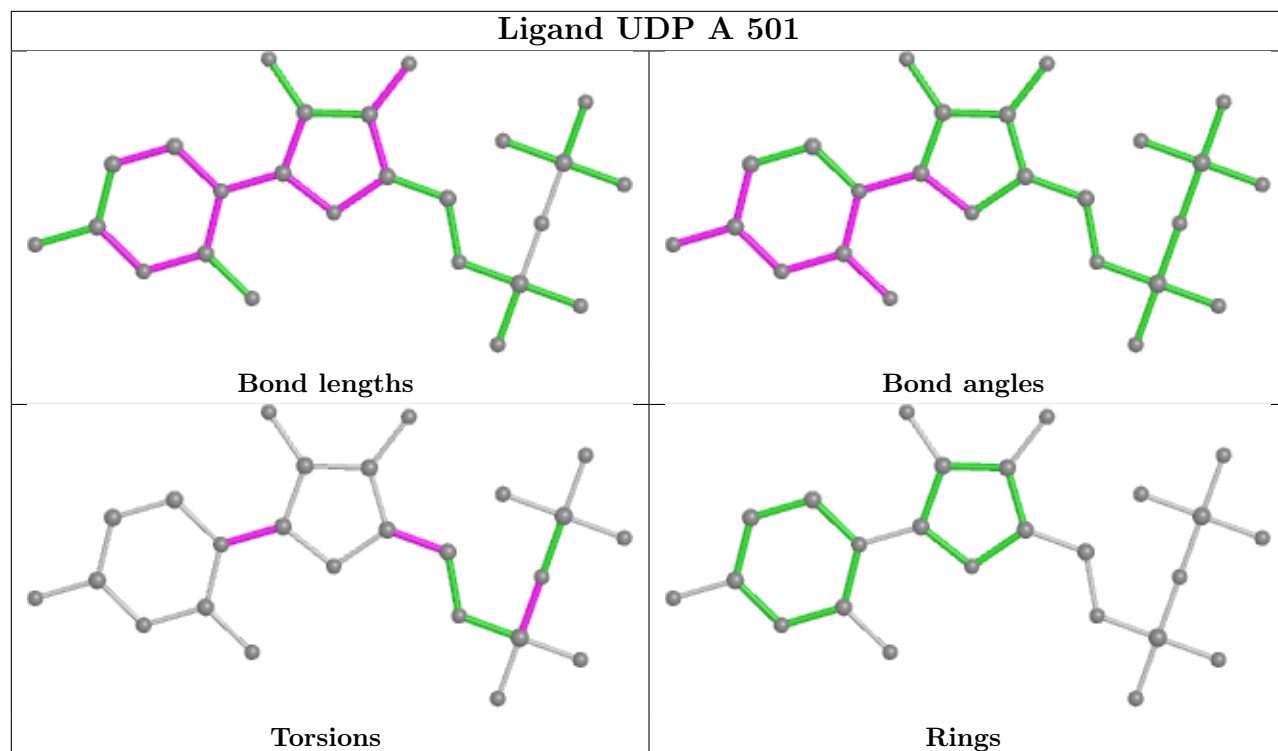
6 monomers are involved in 8 short contacts:

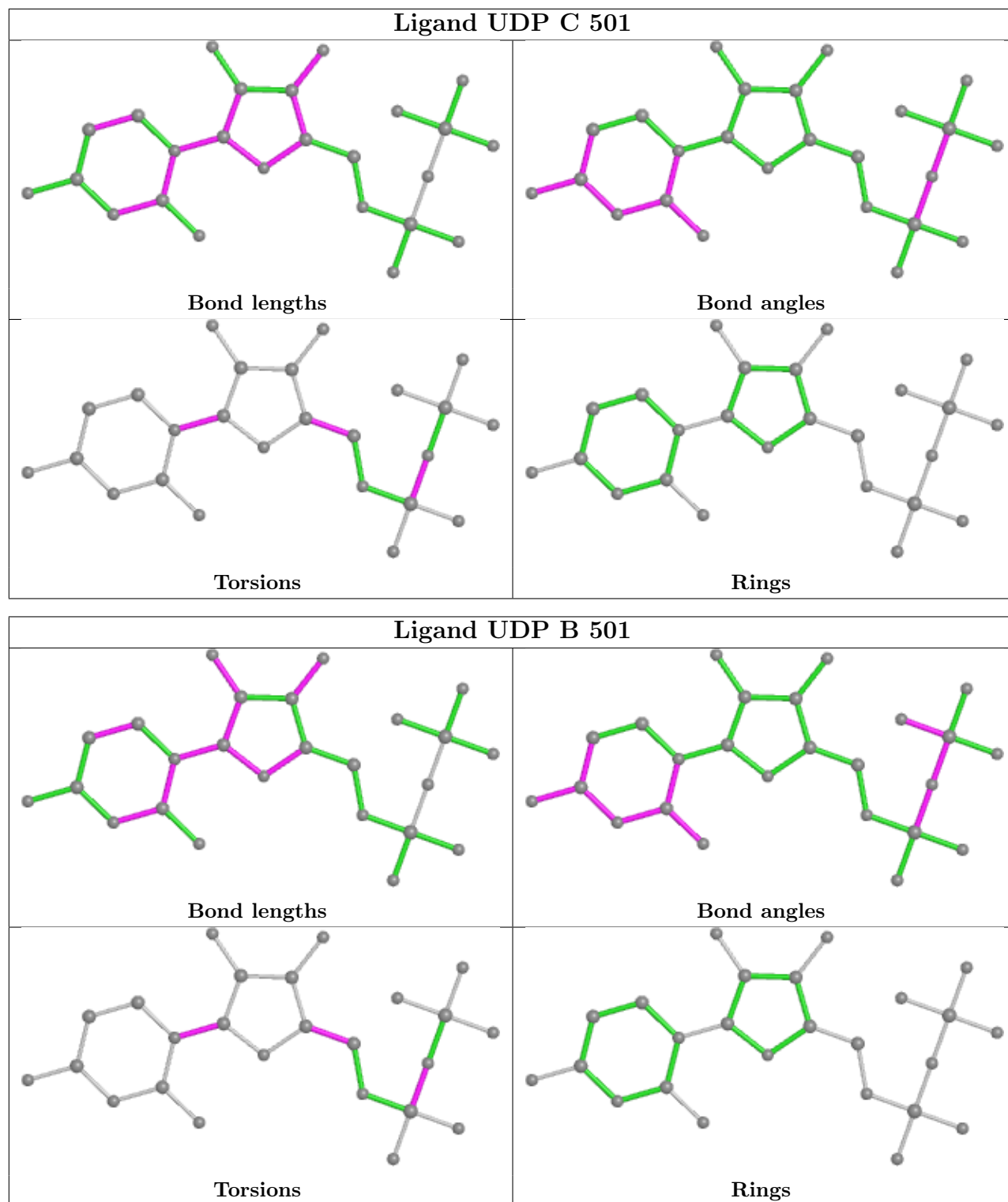
Mol	Chain	Res	Type	Clashes	Symm-Clashes
3	A	502	VDM	2	0
3	D	502	VDM	1	0
3	B	502	VDM	1	0
3	C	502	VDM	2	0
2	A	501	UDP	2	0
2	C	501	UDP	1	0

The following is a two-dimensional graphical depiction of Mogul quality analysis of bond lengths, bond angles, torsion angles, and ring geometry for all instances of the Ligand of Interest. In addition, ligands with molecular weight > 250 and outliers as shown on the validation Tables will also be included. For torsion angles, if less than 5% of the Mogul distribution of torsion angles is within 10 degrees of the torsion angle in question, then that torsion angle is considered an outlier. Any bond that is central to one or more torsion angles identified as an outlier by Mogul will be highlighted in the graph. For rings, the root-mean-square deviation (RMSD) between the ring in question and similar rings identified by Mogul is calculated over all ring torsion angles. If the average RMSD is greater than 60 degrees and the minimal RMSD between the ring in question and any Mogul-identified rings is also greater than 60 degrees, then that ring is considered an outlier. The outliers are highlighted in purple. The color gray indicates Mogul did not find sufficient equivalents in the CSD to analyse the geometry.









## 5.7 Other polymers [i](#)

There are no such residues in this entry.

## 5.8 Polymer linkage issues

There are no chain breaks in this entry.

## 6 Fit of model and data

### 6.1 Protein, DNA and RNA chains

In the following table, the column labelled ‘#RSRZ > 2’ contains the number (and percentage) of RSRZ outliers, followed by percent RSRZ outliers for the chain as percentile scores relative to all X-ray entries and entries of similar resolution. The OWAB column contains the minimum, median, 95<sup>th</sup> percentile and maximum values of the occupancy-weighted average B-factor per residue. The column labelled ‘Q < 0.9’ lists the number of (and percentage) of residues with an average occupancy less than 0.9.

Mol	Chain	Analysed	<RSRZ>	#RSRZ>2	OWAB(Å <sup>2</sup> )	Q<0.9
1	A	459/479 (95%)	0.09	10 (2%) 62 58	29, 47, 70, 97	0
1	B	454/479 (94%)	0.18	18 (3%) 38 35	30, 49, 79, 105	0
1	C	454/479 (94%)	0.08	20 (4%) 34 32	32, 49, 89, 107	0
1	D	456/479 (95%)	0.11	14 (3%) 49 45	32, 48, 82, 98	0
All	All	1823/1916 (95%)	0.11	62 (3%) 45 41	29, 48, 82, 107	0

All (62) RSRZ outliers are listed below:

Mol	Chain	Res	Type	RSRZ
1	B	66	GLU	4.4
1	B	65	PRO	4.3
1	C	62	LEU	4.1
1	D	25	ARG	4.1
1	C	75	ARG	3.8
1	D	74	LYS	3.6
1	B	50	LYS	3.5
1	D	67	ASP	3.5
1	A	96	TYR	3.4
1	B	72	VAL	3.4
1	A	65	PRO	3.3
1	B	56	TRP	3.3
1	C	34	PHE	3.3
1	A	51	THR	3.2
1	C	67	ASP	3.2
1	C	72	VAL	3.2
1	B	32	TYR	3.1
1	D	72	VAL	3.0
1	B	51	THR	3.0
1	C	69	LEU	3.0
1	C	445	GLU	2.9

*Continued on next page...*

*Continued from previous page...*

<b>Mol</b>	<b>Chain</b>	<b>Res</b>	<b>Type</b>	<b>RSRZ</b>
1	D	32	TYR	2.9
1	C	261	LYS	2.9
1	B	239	GLY	2.9
1	A	64	VAL	2.9
1	A	452	GLU	2.8
1	D	79	GLU	2.8
1	A	31	LYS	2.8
1	C	78	ASP	2.8
1	C	82	ALA	2.7
1	B	25	ARG	2.7
1	C	53	THR	2.7
1	C	79	GLU	2.7
1	A	44	GLY	2.7
1	D	66	GLU	2.7
1	C	32	TYR	2.6
1	B	49	SER	2.6
1	D	112	PRO	2.6
1	B	67	ASP	2.6
1	D	445	GLU	2.5
1	C	66	GLU	2.5
1	B	64	VAL	2.5
1	B	44	GLY	2.5
1	B	82	ALA	2.4
1	D	78	ASP	2.4
1	C	96	TYR	2.4
1	D	261	LYS	2.3
1	C	240	ARG	2.3
1	A	67	ASP	2.3
1	C	33	GLU	2.3
1	D	76	LEU	2.3
1	C	80	PHE	2.3
1	B	277	GLN	2.2
1	D	227	GLY	2.2
1	B	77	LYS	2.1
1	B	86	PHE	2.1
1	C	56	TRP	2.1
1	D	47	GLY	2.1
1	C	74	LYS	2.1
1	B	88	ASP	2.1
1	A	72	VAL	2.0
1	A	88	ASP	2.0



## 6.2 Non-standard residues in protein, DNA, RNA chains [i](#)

There are no non-standard protein/DNA/RNA residues in this entry.

## 6.3 Carbohydrates [i](#)

There are no monosaccharides in this entry.

## 6.4 Ligands [i](#)

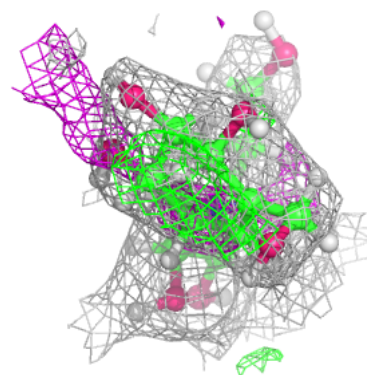
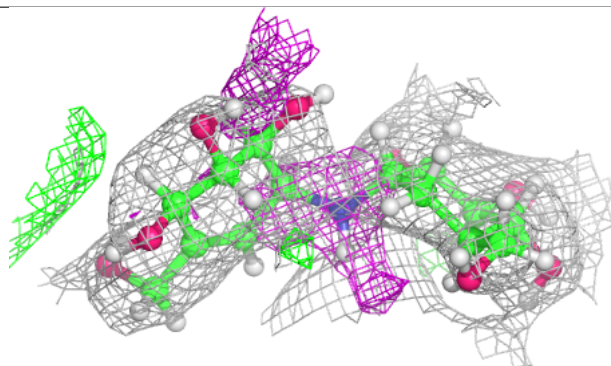
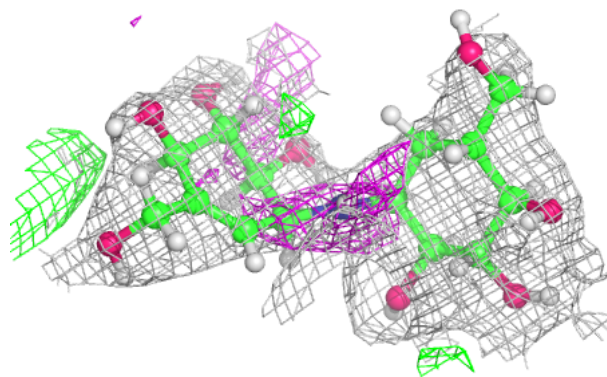
In the following table, the Atoms column lists the number of modelled atoms in the group and the number defined in the chemical component dictionary. The B-factors column lists the minimum, median, 95<sup>th</sup> percentile and maximum values of B factors of atoms in the group. The column labelled 'Q< 0.9' lists the number of atoms with occupancy less than 0.9.

Mol	Type	Chain	Res	Atoms	RSCC	RSR	B-factors( $\text{\AA}^2$ )	Q<0.9
3	VDM	A	502	23/23	0.90	0.17	37,53,67,71	0
3	VDM	D	502	23/23	0.91	0.15	35,50,62,69	0
3	VDM	C	502	23/23	0.93	0.12	37,51,64,68	0
3	VDM	B	502	23/23	0.93	0.12	37,50,65,68	0
2	UDP	C	501	25/25	0.96	0.12	34,43,51,54	0
2	UDP	B	501	25/25	0.97	0.13	34,46,59,60	0
2	UDP	D	501	25/25	0.97	0.13	32,44,56,58	0
2	UDP	A	501	25/25	0.98	0.12	32,42,48,52	0

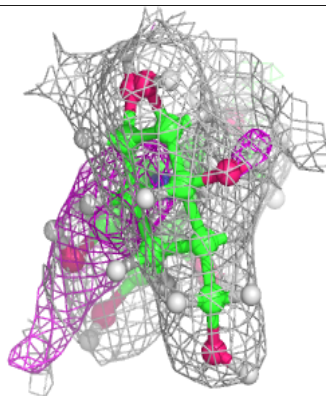
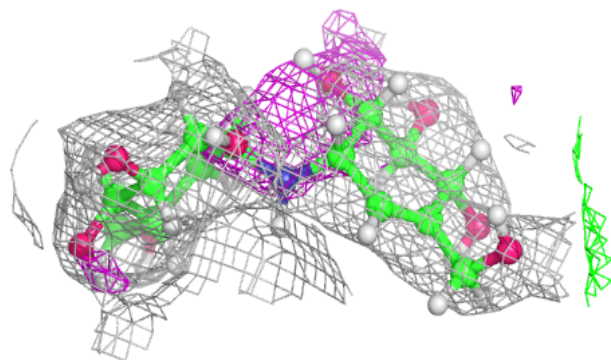
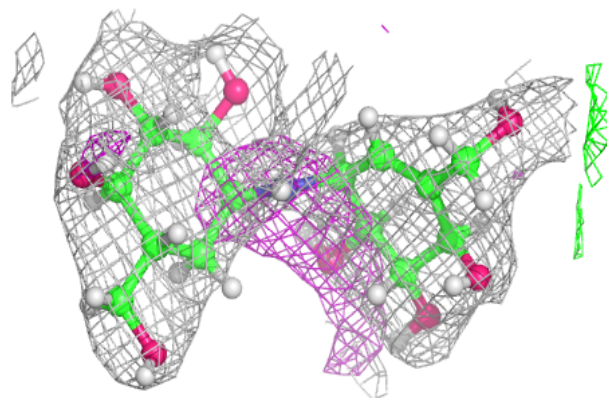
The following is a graphical depiction of the model fit to experimental electron density of all instances of the Ligand of Interest. In addition, ligands with molecular weight > 250 and outliers as shown on the geometry validation Tables will also be included. Each fit is shown from different orientation to approximate a three-dimensional view.

**Electron density around VDM A 502:**

$2mF_o-DF_c$  (at 0.7 rmsd) in gray  
 $mF_o-DF_c$  (at 3 rmsd) in purple (negative)  
and green (positive)

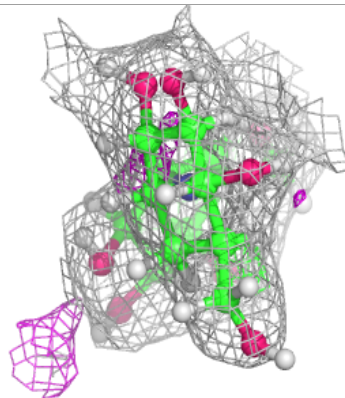
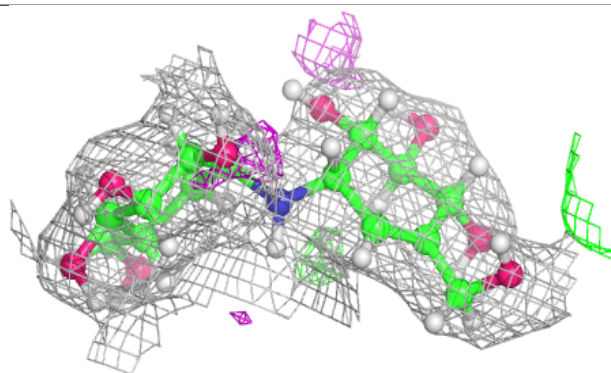
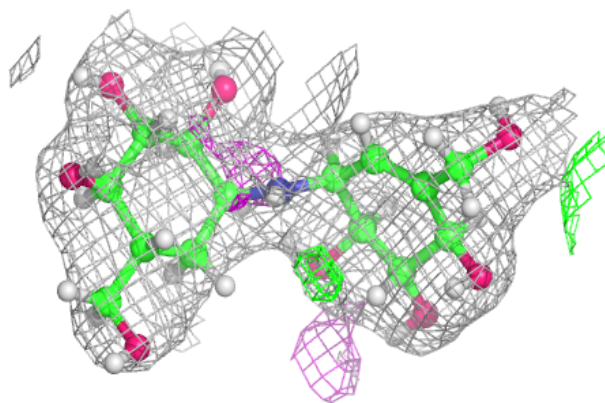
**Electron density around VDM D 502:**

$2mF_o-DF_c$  (at 0.7 rmsd) in gray  
 $mF_o-DF_c$  (at 3 rmsd) in purple (negative)  
and green (positive)

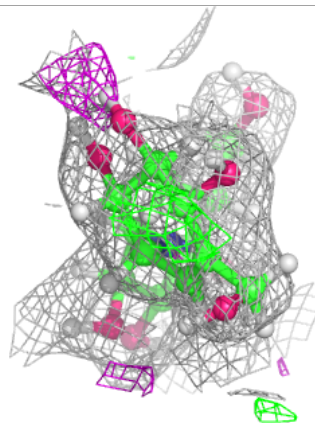
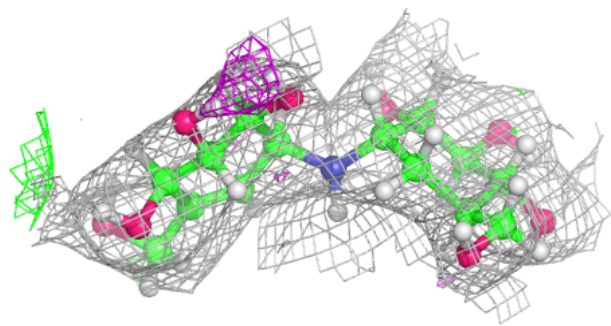
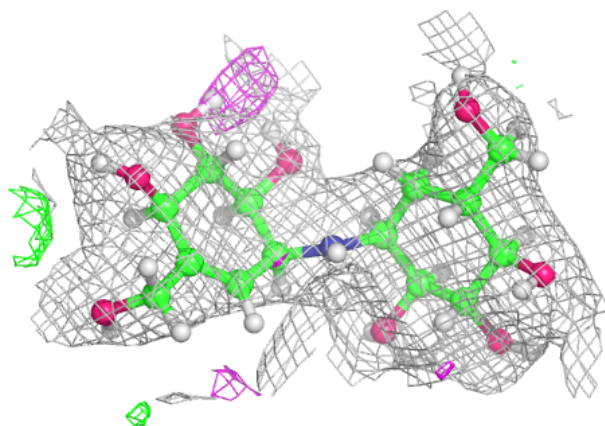


**Electron density around VDM C 502:**

$2mF_o-DF_c$  (at 0.7 rmsd) in gray  
 $mF_o-DF_c$  (at 3 rmsd) in purple (negative)  
and green (positive)

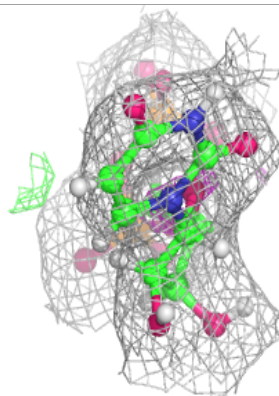
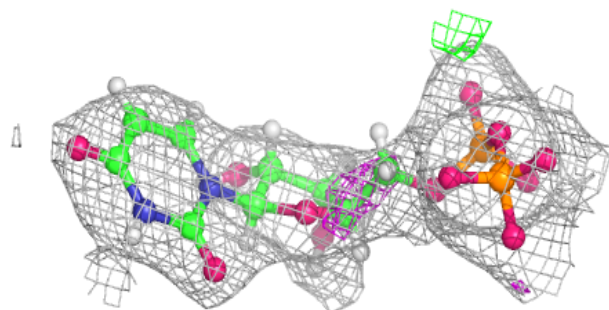
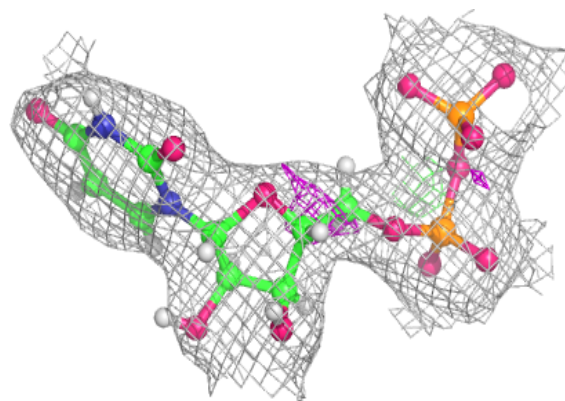
**Electron density around VDM B 502:**

$2mF_o-DF_c$  (at 0.7 rmsd) in gray  
 $mF_o-DF_c$  (at 3 rmsd) in purple (negative)  
and green (positive)

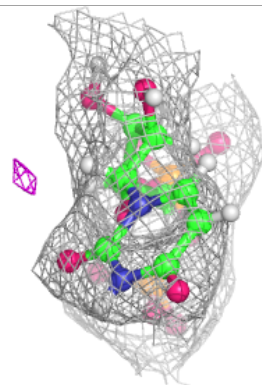
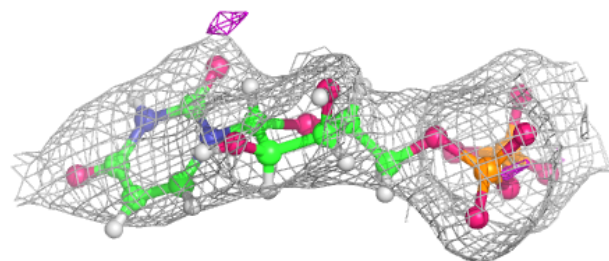
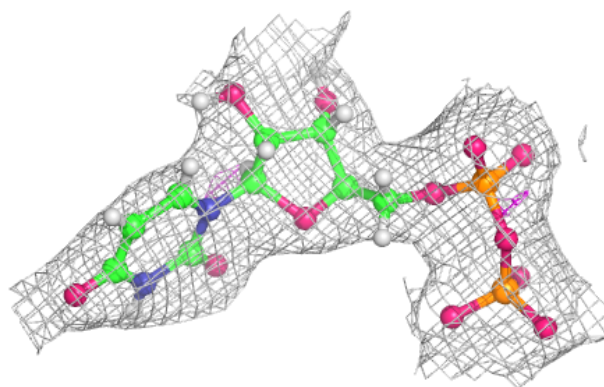


**Electron density around UDP C 501:**

$2mF_o-DF_c$  (at 0.7 rmsd) in gray  
 $mF_o-DF_c$  (at 3 rmsd) in purple (negative)  
and green (positive)

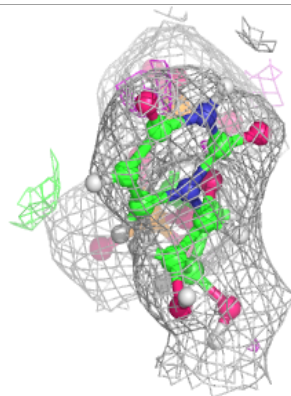
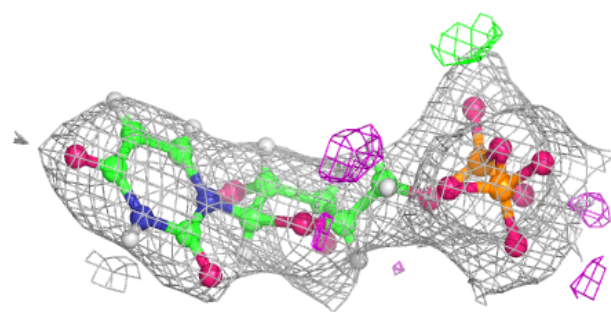
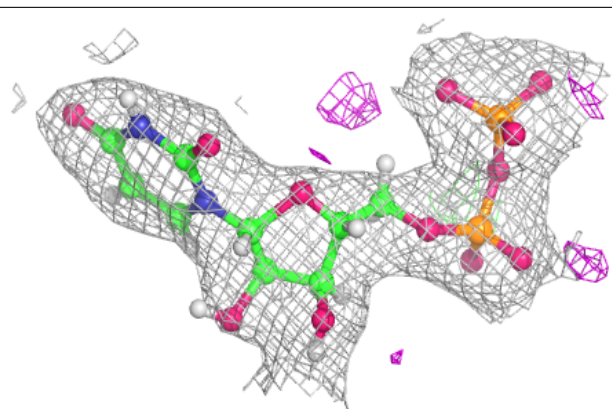
**Electron density around UDP B 501:**

$2mF_o-DF_c$  (at 0.7 rmsd) in gray  
 $mF_o-DF_c$  (at 3 rmsd) in purple (negative)  
and green (positive)

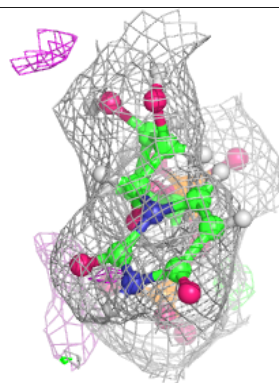
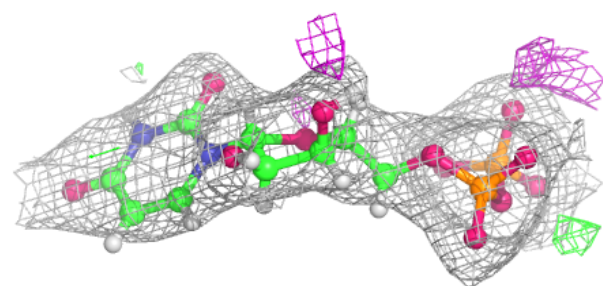
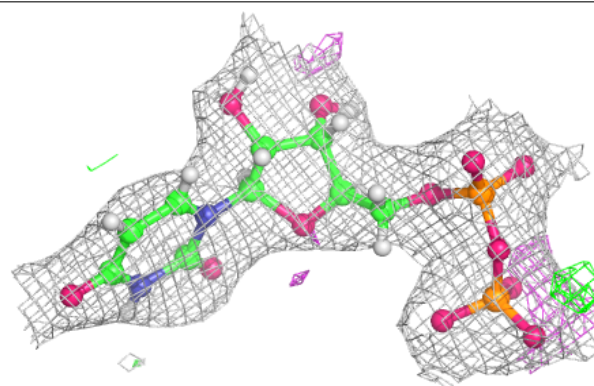


**Electron density around UDP D 501:**

$2mF_o-DF_c$  (at 0.7 rmsd) in gray  
 $mF_o-DF_c$  (at 3 rmsd) in purple (negative)  
and green (positive)

**Electron density around UDP A 501:**

$2mF_o-DF_c$  (at 0.7 rmsd) in gray  
 $mF_o-DF_c$  (at 3 rmsd) in purple (negative)  
and green (positive)



## 6.5 Other polymers [i](#)

There are no such residues in this entry.