



# Full wwPDB X-ray Structure Validation Report ⓘ

Jun 22, 2024 – 11:31 PM EDT

PDB ID : 6I20  
Title : Flavin Analogue Sheds Light on Light-Oxygen-Voltage Domain Mechanism  
Authors : Rizkallah, P.J.; Kalvaitis, M.E.; Allemann, R.K.; Mart, R.J.; Johnson, L.A.  
Deposited on : 2018-10-31  
Resolution : 1.37 Å(reported)

This is a Full wwPDB X-ray Structure Validation Report for a publicly released PDB entry.

We welcome your comments at [validation@mail.wwpdb.org](mailto:validation@mail.wwpdb.org)

A user guide is available at

<https://www.wwpdb.org/validation/2017/XrayValidationReportHelp>

with specific help available everywhere you see the ⓘ symbol.

The types of validation reports are described at

<http://www.wwpdb.org/validation/2017/FAQs#types>.

---

The following versions of software and data (see [references ⓘ](#)) were used in the production of this report:

MolProbity : 4.02b-467  
Mogul : 2022.3.0, CSD as543be (2022)  
Xtriage (Phenix) : 1.20.1  
EDS : 2.37.1  
buster-report : 1.1.7 (2018)  
Percentile statistics : 20191225.v01 (using entries in the PDB archive December 25th 2019)  
Refmac : 5.8.0158  
CCP4 : 7.0.044 (Gargrove)  
Ideal geometry (proteins) : Engh & Huber (2001)  
Ideal geometry (DNA, RNA) : Parkinson et al. (1996)  
Validation Pipeline (wwPDB-VP) : 2.37.1

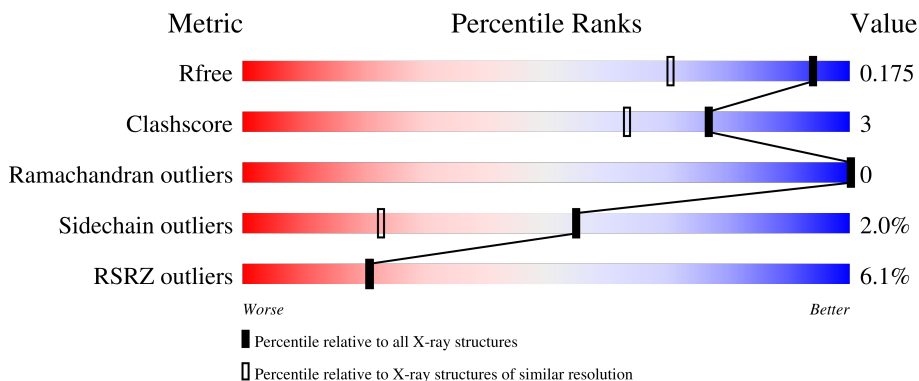
# 1 Overall quality at a glance

The following experimental techniques were used to determine the structure:

*X-RAY DIFFRACTION*

The reported resolution of this entry is 1.37 Å.

Percentile scores (ranging between 0-100) for global validation metrics of the entry are shown in the following graphic. The table shows the number of entries on which the scores are based.



Metric	Whole archive (#Entries)	Similar resolution (#Entries, resolution range(Å))
$R_{free}$	130704	2907 (1.40-1.36)
Clashscore	141614	3037 (1.40-1.36)
Ramachandran outliers	138981	2970 (1.40-1.36)
Sidechain outliers	138945	2969 (1.40-1.36)
RSRZ outliers	127900	2846 (1.40-1.36)

The table below summarises the geometric issues observed across the polymeric chains and their fit to the electron density. The red, orange, yellow and green segments of the lower bar indicate the fraction of residues that contain outliers for  $\geq 3$ , 2, 1 and 0 types of geometric quality criteria respectively. A grey segment represents the fraction of residues that are not modelled. The numeric value for each fraction is indicated below the corresponding segment, with a dot representing fractions  $\leq 5\%$ . The upper red bar (where present) indicates the fraction of residues that have poor fit to the electron density. The numeric value is given above the bar.

Mol	Chain	Length	Quality of chain
1	A	134	
1	C	134	
1	D	134	
2	B	134	

## 2 Entry composition i

There are 8 unique types of molecules in this entry. The entry contains 5099 atoms, of which 0 are hydrogens and 0 are deuteriums.

In the tables below, the ZeroOcc column contains the number of atoms modelled with zero occupancy, the AltConf column contains the number of residues with at least one atom in alternate conformation and the Trace column contains the number of residues modelled with at most 2 atoms.

- Molecule 1 is a protein called Aureochrome1-like protein.

Mol	Chain	Residues	Atoms					ZeroOcc	AltConf	Trace
			Total	C	N	O	S			
1	A	131	1096	701	183	206	6	0	12	0
1	C	130	1043	660	179	200	4	0	3	0
1	D	134	1071	679	180	208	4	0	4	0

There are 18 discrepancies between the modelled and reference sequences:

Chain	Residue	Modelled	Actual	Comment	Reference
A	178	GLY	-	expression tag	UNP C5NSW6
A	179	ALA	-	expression tag	UNP C5NSW6
A	180	MET	-	expression tag	UNP C5NSW6
A	309	GLU	-	expression tag	UNP C5NSW6
A	310	ASN	-	expression tag	UNP C5NSW6
A	311	GLU	-	expression tag	UNP C5NSW6
C	178	GLY	-	expression tag	UNP C5NSW6
C	179	ALA	-	expression tag	UNP C5NSW6
C	180	MET	-	expression tag	UNP C5NSW6
C	309	GLU	-	expression tag	UNP C5NSW6
C	310	ASN	-	expression tag	UNP C5NSW6
C	311	GLU	-	expression tag	UNP C5NSW6
D	178	GLY	-	expression tag	UNP C5NSW6
D	179	ALA	-	expression tag	UNP C5NSW6
D	180	MET	-	expression tag	UNP C5NSW6
D	309	GLU	-	expression tag	UNP C5NSW6
D	310	ASN	-	expression tag	UNP C5NSW6
D	311	GLU	-	expression tag	UNP C5NSW6

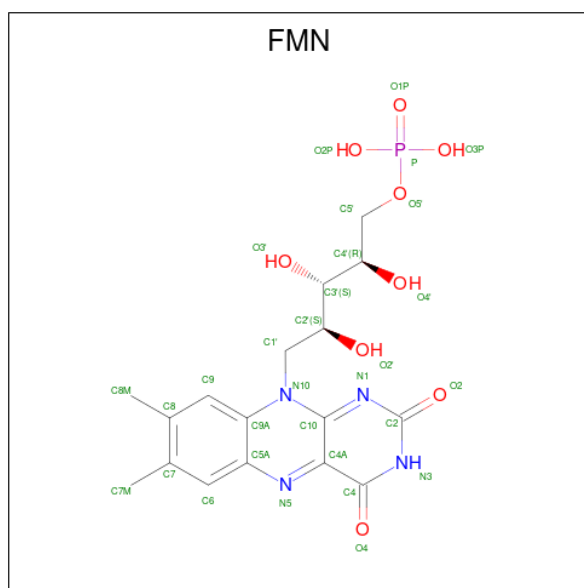
- Molecule 2 is a protein called Aureochrome1-like protein.

Mol	Chain	Residues	Atoms					ZeroOcc	AltConf	Trace
			Total	C	N	O	S			
2	B	133	1061	674	178	204	5	0	5	0

There are 5 discrepancies between the modelled and reference sequences:

Chain	Residue	Modelled	Actual	Comment	Reference
B	178	GLY	-	expression tag	UNP C5NSW6
B	179	ALA	-	expression tag	UNP C5NSW6
B	180	MET	-	expression tag	UNP C5NSW6
B	310	LYS	-	expression tag	UNP C5NSW6
B	311	GLU	-	expression tag	UNP C5NSW6

- Molecule 3 is FLAVIN MONONUCLEOTIDE (three-letter code: FMN) (formula: C<sub>17</sub>H<sub>21</sub>N<sub>4</sub>O<sub>9</sub>P).



Mol	Chain	Residues	Atoms					ZeroOcc	AltConf
			Total	C	N	O	P		
3	A	1	31	17	4	9	1	0	0
3	B	1	31	17	4	9	1	0	0
3	C	1	31	17	4	9	1	0	0
3	D	1	31	17	4	9	1	0	0

- Molecule 4 is 1,2-ETHANEDIOL (three-letter code: EDO) (formula: C<sub>2</sub>H<sub>6</sub>O<sub>2</sub>).



Mol	Chain	Residues	Atoms	ZeroOcc	AltConf
4	A	1	Total C O 4 2 2	0	0
4	A	1	Total C O 4 2 2	0	0
4	A	1	Total C O 4 2 2	0	0
4	B	1	Total C O 8 4 4	0	1
4	D	1	Total C O 4 2 2	0	0
4	D	1	Total C O 4 2 2	0	0

- Molecule 5 is ACETATE ION (three-letter code: ACT) (formula: C<sub>2</sub>H<sub>3</sub>O<sub>2</sub>).

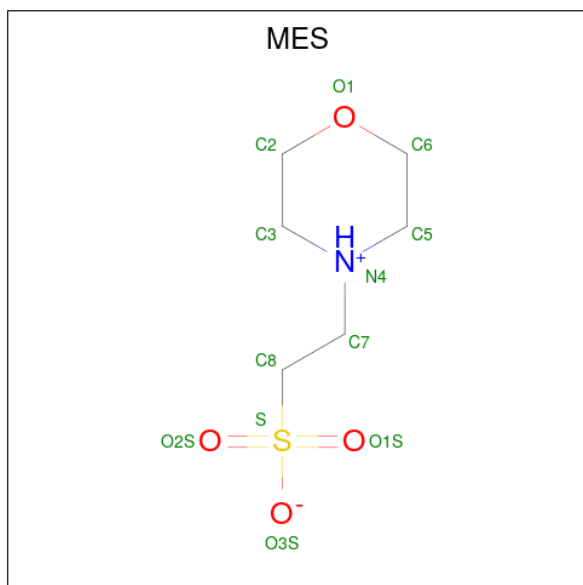


Mol	Chain	Residues	Atoms	ZeroOcc	AltConf
5	A	1	Total C O 4 2 2	0	0

- Molecule 6 is CHLORIDE ION (three-letter code: CL) (formula: Cl).

Mol	Chain	Residues	Atoms	ZeroOcc	AltConf
6	A	1	Total Cl 1 1	0	0
6	B	1	Total Cl 1 1	0	0
6	C	1	Total Cl 1 1	0	0
6	D	1	Total Cl 1 1	0	0

- Molecule 7 is 2-(N-MORPHOLINO)-ETHANESULFONIC ACID (three-letter code: MES) (formula: C<sub>6</sub>H<sub>13</sub>NO<sub>4</sub>S).



Mol	Chain	Residues	Atoms					ZeroOcc	AltConf
			Total	C	N	O	S		
7	B	1	12	6	1	4	1	0	0

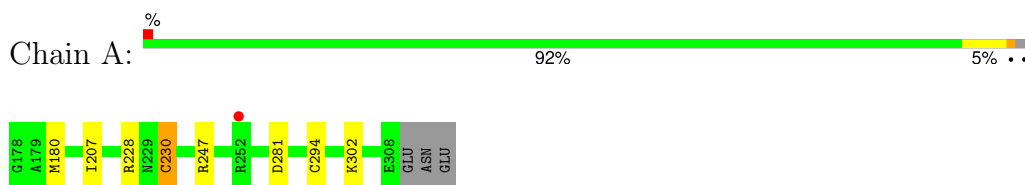
- Molecule 8 is water.

Mol	Chain	Residues	Atoms		ZeroOcc	AltConf
8	A	185	Total	O	0	1
			186	186		
8	B	161	Total	O	0	0
			161	161		
8	C	176	Total	O	0	1
			177	177		
8	D	132	Total	O	0	0
			132	132		

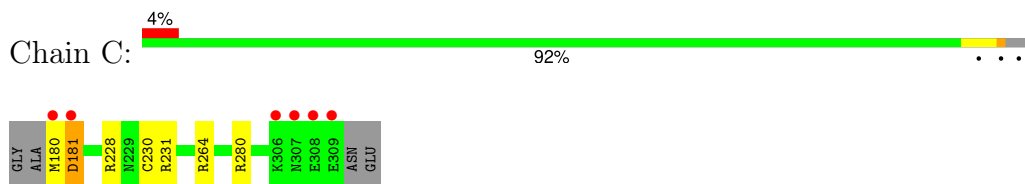
### 3 Residue-property plots [i](#)

These plots are drawn for all protein, RNA, DNA and oligosaccharide chains in the entry. The first graphic for a chain summarises the proportions of the various outlier classes displayed in the second graphic. The second graphic shows the sequence view annotated by issues in geometry and electron density. Residues are color-coded according to the number of geometric quality criteria for which they contain at least one outlier: green = 0, yellow = 1, orange = 2 and red = 3 or more. A red dot above a residue indicates a poor fit to the electron density ( $RSRZ > 2$ ). Stretches of 2 or more consecutive residues without any outlier are shown as a green connector. Residues present in the sample, but not in the model, are shown in grey.

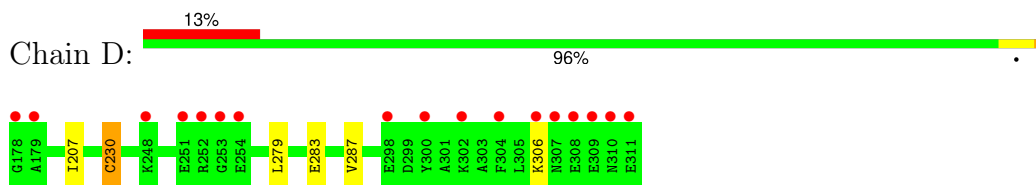
- Molecule 1: Aureochrome1-like protein



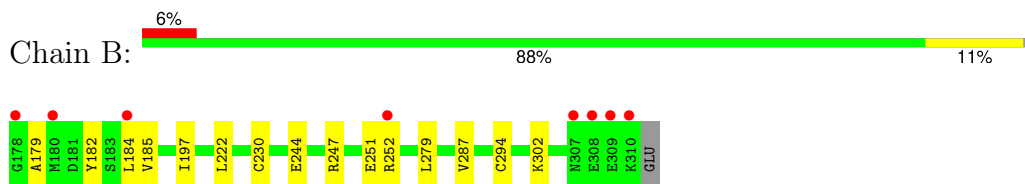
- Molecule 1: Aureochrome1-like protein



- Molecule 1: Aureochrome1-like protein



- Molecule 2: Aureochrome1-like protein





## 4 Data and refinement statistics

Property	Value	Source
Space group	P 21 21 21	Depositor
Cell constants a, b, c, $\alpha$ , $\beta$ , $\gamma$	65.68Å 104.04Å 105.94Å 90.00° 90.00° 90.00°	Depositor
Resolution (Å)	55.54 – 1.37 55.54 – 1.37	Depositor EDS
% Data completeness (in resolution range)	99.9 (55.54-1.37) 99.9 (55.54-1.37)	Depositor EDS
$R_{merge}$	0.11	Depositor
$R_{sym}$	(Not available)	Depositor
$\langle I/\sigma(I) \rangle$ <sup>1</sup>	1.35 (at 1.37Å)	Xtrriage
Refinement program	REFMAC 5.8.0189	Depositor
R, $R_{free}$	0.151 , 0.175 0.151 , 0.175	Depositor DCC
$R_{free}$ test set	7522 reflections (4.94%)	wwPDB-VP
Wilson B-factor (Å <sup>2</sup> )	18.9	Xtrriage
Anisotropy	0.328	Xtrriage
Bulk solvent $k_{sol}$ (e/Å <sup>3</sup> ), $B_{sol}$ (Å <sup>2</sup> )	0.34 , 41.4	EDS
L-test for twinning <sup>2</sup>	$\langle  L  \rangle = 0.49$ , $\langle L^2 \rangle = 0.32$	Xtrriage
Estimated twinning fraction	0.012 for -h,l,k	Xtrriage
$F_o, F_c$ correlation	0.97	EDS
Total number of atoms	5099	wwPDB-VP
Average B, all atoms (Å <sup>2</sup> )	25.0	wwPDB-VP

Xtrriage's analysis on translational NCS is as follows: *The largest off-origin peak in the Patterson function is 8.30% of the height of the origin peak. No significant pseudotranslation is detected.*

<sup>1</sup>Intensities estimated from amplitudes.

<sup>2</sup>Theoretical values of  $\langle |L| \rangle$ ,  $\langle L^2 \rangle$  for acentric reflections are 0.5, 0.333 respectively for untwinned datasets, and 0.375, 0.2 for perfectly twinned datasets.

## 5 Model quality [i](#)

### 5.1 Standard geometry [i](#)

Bond lengths and bond angles in the following residue types are not validated in this section: ACT, MES, FMN, EDO, CL

The Z score for a bond length (or angle) is the number of standard deviations the observed value is removed from the expected value. A bond length (or angle) with  $|Z| > 5$  is considered an outlier worth inspection. RMSZ is the root-mean-square of all Z scores of the bond lengths (or angles).

Mol	Chain	Bond lengths		Bond angles	
		RMSZ	# Z  >5	RMSZ	# Z  >5
1	A	0.68	0/1144	0.88	2/1544 (0.1%)
1	C	0.65	0/1067	0.85	2/1443 (0.1%)
1	D	0.68	1/1095 (0.1%)	0.80	0/1482
2	B	0.68	1/1088 (0.1%)	0.84	1/1472 (0.1%)
All	All	0.67	2/4394 (0.0%)	0.85	5/5941 (0.1%)

All (2) bond length outliers are listed below:

Mol	Chain	Res	Type	Atoms	Z	Observed(Å)	Ideal(Å)
1	D	283	GLU	CD-OE1	-5.72	1.19	1.25
2	B	251	GLU	CD-OE1	-5.01	1.20	1.25

All (5) bond angle outliers are listed below:

Mol	Chain	Res	Type	Atoms	Z	Observed(°)	Ideal(°)
2	B	252	ARG	NE-CZ-NH2	9.11	124.85	120.30
1	A	247	ARG	NE-CZ-NH2	6.82	123.71	120.30
1	C	264	ARG	NE-CZ-NH1	5.76	123.18	120.30
1	C	280	ARG	NE-CZ-NH2	-5.40	117.60	120.30
1	A	281	ASP	CB-CG-OD1	5.00	122.80	118.30

There are no chirality outliers.

There are no planarity outliers.

### 5.2 Too-close contacts [i](#)

In the following table, the Non-H and H(model) columns list the number of non-hydrogen atoms and hydrogen atoms in the chain respectively. The H(added) column lists the number of hydrogen atoms added and optimized by MolProbity. The Clashes column lists the number of clashes within

the asymmetric unit, whereas Symm-Clashes lists symmetry-related clashes.

Mol	Chain	Non-H	H(model)	H(added)	Clashes	Symm-Clashes
1	A	1096	0	1126	6	0
1	C	1043	0	1038	3	0
1	D	1071	0	1064	2	0
2	B	1061	0	1059	15	0
3	A	31	0	19	0	0
3	B	31	0	19	0	0
3	C	31	0	19	0	0
3	D	31	0	19	0	0
4	A	12	0	18	0	0
4	B	8	0	12	2	0
4	D	8	0	12	0	0
5	A	4	0	3	0	0
6	A	1	0	0	0	0
6	B	1	0	0	0	0
6	C	1	0	0	0	0
6	D	1	0	0	0	0
7	B	12	0	13	2	0
8	A	186	0	0	3	1
8	B	161	0	0	2	0
8	C	177	0	0	4	1
8	D	132	0	0	0	0
All	All	5099	0	4421	27	1

The all-atom clashscore is defined as the number of clashes found per 1000 atoms (including hydrogen atoms). The all-atom clashscore for this structure is 3.

All (27) close contacts within the same asymmetric unit are listed below, sorted by their clash magnitude.

Atom-1	Atom-2	Interatomic distance (Å)	Clash overlap (Å)
1:A:228[A]:ARG:NH2	8:A:501:HOH:O	1.78	1.17
1:A:294[B]:CYS:SG	8:C:584:HOH:O	2.01	1.16
2:B:244:GLU:OE1	2:B:247:ARG:NH1	2.12	0.83
1:C:181:ASP:OD1	8:C:501:HOH:O	1.97	0.80
2:B:179:ALA:HB1	2:B:197[B]:ILE:CD1	2.17	0.74
2:B:179:ALA:HB1	2:B:197[B]:ILE:HD13	1.79	0.65
2:B:185:VAL:CG2	2:B:197[B]:ILE:HD11	2.28	0.64
1:C:228[B]:ARG:NE	8:C:502:HOH:O	2.32	0.62
2:B:222:LEU:HD11	4:B:402[B]:EDO:H12	1.83	0.61
2:B:179:ALA:HB1	2:B:197[B]:ILE:HD12	1.85	0.56
2:B:294[B]:CYS:SG	7:B:403:MES:C3	2.94	0.56

*Continued on next page...*

Continued from previous page...

Atom-1	Atom-2	Interatomic distance (Å)	Clash overlap (Å)
2:B:182:TYR:OH	2:B:287[A]:VAL:HG13	2.08	0.54
1:A:294[B]:CYS:SG	8:A:632:HOH:O	1.95	0.53
2:B:185:VAL:HG21	2:B:197[B]:ILE:HD11	1.90	0.52
1:C:231[B]:ARG:NE	8:C:503:HOH:O	2.44	0.50
2:B:179:ALA:CB	2:B:197[B]:ILE:HD13	2.45	0.47
2:B:185:VAL:HG22	2:B:197[B]:ILE:HD11	1.95	0.47
1:A:207:ILE:HD11	1:A:230[B]:CYS:SG	2.56	0.46
2:B:287[A]:VAL:HG11	8:B:607:HOH:O	2.16	0.45
1:A:180[B]:MET:SD	1:A:180[B]:MET:N	2.90	0.45
2:B:185:VAL:HG21	2:B:197[B]:ILE:CD1	2.48	0.42
4:B:402[A]:EDO:H11	8:B:501:HOH:O	2.20	0.42
1:D:279:LEU:O	1:D:287[A]:VAL:HG22	2.19	0.41
2:B:294[B]:CYS:SG	7:B:403:MES:H31	2.60	0.41
2:B:184:LEU:HD21	2:B:279:LEU:HD22	2.02	0.41
1:A:228[A]:ARG:HD3	8:A:501:HOH:O	2.19	0.41
1:D:207:ILE:HD11	1:D:230[B]:CYS:SG	2.62	0.40

All (1) symmetry-related close contacts are listed below. The label for Atom-2 includes the symmetry operator and encoded unit-cell translations to be applied.

Atom-1	Atom-2	Interatomic distance (Å)	Clash overlap (Å)
8:A:530:HOH:O	8:C:503:HOH:O[3_554]	1.99	0.21

## 5.3 Torsion angles [i](#)

### 5.3.1 Protein backbone [i](#)

In the following table, the Percentiles column shows the percent Ramachandran outliers of the chain as a percentile score with respect to all X-ray entries followed by that with respect to entries of similar resolution.

The Analysed column shows the number of residues for which the backbone conformation was analysed, and the total number of residues.

Mol	Chain	Analysed	Favoured	Allowed	Outliers	Percentiles	
1	A	142/134 (106%)	142 (100%)	0	0	100	100
1	C	131/134 (98%)	131 (100%)	0	0	100	100
1	D	136/134 (102%)	136 (100%)	0	0	100	100
2	B	135/134 (101%)	135 (100%)	0	0	100	100

Continued on next page...

Continued from previous page...

Mol	Chain	Analysed	Favoured	Allowed	Outliers	Percentiles	
All	All	544/536 (102%)	544 (100%)	0	0	100	100

There are no Ramachandran outliers to report.

### 5.3.2 Protein sidechains [i](#)

In the following table, the Percentiles column shows the percent sidechain outliers of the chain as a percentile score with respect to all X-ray entries followed by that with respect to entries of similar resolution.

The Analysed column shows the number of residues for which the sidechain conformation was analysed, and the total number of residues.

Mol	Chain	Analysed	Rotameric	Outliers	Percentiles	
1	A	123/113 (109%)	120 (98%)	3 (2%)	49	16
1	C	114/113 (101%)	110 (96%)	4 (4%)	36	7
1	D	117/113 (104%)	114 (97%)	3 (3%)	46	13
2	B	116/113 (103%)	113 (97%)	3 (3%)	46	13
All	All	470/452 (104%)	457 (97%)	13 (3%)	55	11

All (13) residues with a non-rotameric sidechain are listed below:

Mol	Chain	Res	Type
1	A	230[A]	CYS
1	A	230[B]	CYS
1	A	302	LYS
2	B	230[A]	CYS
2	B	230[B]	CYS
2	B	302	LYS
1	C	180	MET
1	C	181	ASP
1	C	230[A]	CYS
1	C	230[B]	CYS
1	D	230[A]	CYS
1	D	230[B]	CYS
1	D	306	LYS

Sometimes sidechains can be flipped to improve hydrogen bonding and reduce clashes. All (2) such sidechains are listed below:

Mol	Chain	Res	Type
1	D	189	GLN
1	D	310	ASN

### 5.3.3 RNA [i](#)

There are no RNA molecules in this entry.

## 5.4 Non-standard residues in protein, DNA, RNA chains [i](#)

There are no non-standard protein/DNA/RNA residues in this entry.

## 5.5 Carbohydrates [i](#)

There are no monosaccharides in this entry.

## 5.6 Ligand geometry [i](#)

Of 17 ligands modelled in this entry, 4 are monoatomic - leaving 13 for Mogul analysis.

In the following table, the Counts columns list the number of bonds (or angles) for which Mogul statistics could be retrieved, the number of bonds (or angles) that are observed in the model and the number of bonds (or angles) that are defined in the Chemical Component Dictionary. The Link column lists molecule types, if any, to which the group is linked. The Z score for a bond length (or angle) is the number of standard deviations the observed value is removed from the expected value. A bond length (or angle) with  $|Z| > 2$  is considered an outlier worth inspection. RMSZ is the root-mean-square of all Z scores of the bond lengths (or angles).

Mol	Type	Chain	Res	Link	Bond lengths			Bond angles		
					Counts	RMSZ	# Z  > 2	Counts	RMSZ	# Z  > 2
4	EDO	B	402[A]	-	3,3,3	0.37	0	2,2,2	0.60	0
4	EDO	D	403	-	3,3,3	0.64	0	2,2,2	0.55	0
5	ACT	A	405	-	3,3,3	0.78	0	3,3,3	1.22	0
3	FMN	D	401	-	33,33,33	1.08	4 (12%)	48,50,50	1.09	4 (8%)
4	EDO	D	402	-	3,3,3	0.45	0	2,2,2	0.42	0
3	FMN	A	401	-	33,33,33	1.44	5 (15%)	48,50,50	1.10	3 (6%)
4	EDO	A	403	-	3,3,3	0.44	0	2,2,2	0.25	0
4	EDO	A	404	-	3,3,3	0.51	0	2,2,2	0.40	0
7	MES	B	403	-	12,12,12	1.98	1 (8%)	15,16,16	1.72	2 (13%)
3	FMN	C	401	-	33,33,33	1.35	5 (15%)	48,50,50	1.31	5 (10%)
4	EDO	A	402	-	3,3,3	0.41	0	2,2,2	0.40	0
4	EDO	B	402[B]	-	3,3,3	0.39	0	2,2,2	0.43	0

Mol	Type	Chain	Res	Link	Bond lengths			Bond angles		
					Counts	RMSZ	# Z  > 2	Counts	RMSZ	# Z  > 2
3	FMN	B	401	-	33,33,33	1.25	5 (15%)	48,50,50	1.13	3 (6%)

In the following table, the Chirals column lists the number of chiral outliers, the number of chiral centers analysed, the number of these observed in the model and the number defined in the Chemical Component Dictionary. Similar counts are reported in the Torsion and Rings columns. '-' means no outliers of that kind were identified.

Mol	Type	Chain	Res	Link	Chirals	Torsions	Rings
4	EDO	B	402[A]	-	-	1/1/1/1	-
4	EDO	D	403	-	-	1/1/1/1	-
3	FMN	D	401	-	-	1/18/18/18	0/3/3/3
4	EDO	D	402	-	-	0/1/1/1	-
3	FMN	A	401	-	-	1/18/18/18	0/3/3/3
4	EDO	A	403	-	-	1/1/1/1	-
4	EDO	A	404	-	-	1/1/1/1	-
7	MES	B	403	-	-	0/6/14/14	0/1/1/1
3	FMN	C	401	-	-	1/18/18/18	0/3/3/3
4	EDO	A	402	-	-	1/1/1/1	-
4	EDO	B	402[B]	-	-	0/1/1/1	-
3	FMN	B	401	-	-	1/18/18/18	0/3/3/3

All (20) bond length outliers are listed below:

Mol	Chain	Res	Type	Atoms	Z	Observed(Å)	Ideal(Å)
7	B	403	MES	C8-S	-6.46	1.68	1.77
3	A	401	FMN	C5'-C4'	3.83	1.57	1.51
3	B	401	FMN	C9A-C5A	3.52	1.46	1.41
3	C	401	FMN	C9A-C5A	3.28	1.46	1.41
3	A	401	FMN	C4A-N5	3.14	1.37	1.30
3	C	401	FMN	P-O1P	2.93	1.59	1.50
3	A	401	FMN	C9A-C5A	2.78	1.45	1.41
3	C	401	FMN	C4A-N5	2.78	1.36	1.30
3	C	401	FMN	P-O5'	2.64	1.68	1.60
3	A	401	FMN	C6-C7	-2.63	1.36	1.39
3	D	401	FMN	C4-N3	-2.51	1.34	1.38
3	B	401	FMN	C4-N3	-2.38	1.34	1.38
3	D	401	FMN	C4A-N5	2.33	1.35	1.30
3	C	401	FMN	C10-N1	2.30	1.37	1.33
3	B	401	FMN	C2-N3	-2.30	1.33	1.39
3	B	401	FMN	C8-C7	2.18	1.46	1.40
3	D	401	FMN	C9A-C5A	2.16	1.44	1.41
3	B	401	FMN	C4A-N5	2.14	1.35	1.30

*Continued on next page...*

*Continued from previous page...*

Mol	Chain	Res	Type	Atoms	Z	Observed(Å)	Ideal(Å)
3	D	401	FMN	C10-N10	2.13	1.41	1.37
3	A	401	FMN	C7M-C7	2.12	1.55	1.51

All (17) bond angle outliers are listed below:

Mol	Chain	Res	Type	Atoms	Z	Observed(°)	Ideal(°)
7	B	403	MES	O1S-S-C8	5.11	114.45	106.73
3	C	401	FMN	O3P-P-O5'	-4.62	94.61	106.67
3	C	401	FMN	O2-C2-N1	-3.52	115.95	121.80
3	A	401	FMN	C4A-C10-N10	3.20	121.06	116.48
3	D	401	FMN	C4-C4A-N5	3.14	122.54	118.21
3	B	401	FMN	O4-C4-C4A	-2.94	118.76	126.53
3	D	401	FMN	O4-C4-C4A	-2.72	119.35	126.53
3	B	401	FMN	C5A-C9A-N10	2.54	120.26	117.97
3	B	401	FMN	C4-C4A-N5	2.49	121.64	118.21
3	C	401	FMN	C4A-C10-N10	2.45	119.99	116.48
3	C	401	FMN	O3P-P-O1P	2.37	120.09	110.83
3	A	401	FMN	O2-C2-N1	-2.23	118.09	121.80
7	B	403	MES	C7-N4-C5	-2.13	105.56	111.24
3	A	401	FMN	C4-N3-C2	-2.12	121.88	125.64
3	C	401	FMN	N3-C2-N1	2.11	123.99	119.50
3	D	401	FMN	C5A-C9A-N10	2.10	119.87	117.97
3	D	401	FMN	C4A-C4-N3	2.04	118.44	113.25

There are no chirality outliers.

All (9) torsion outliers are listed below:

Mol	Chain	Res	Type	Atoms
4	A	402	EDO	O1-C1-C2-O2
4	A	403	EDO	O1-C1-C2-O2
4	B	402[A]	EDO	O1-C1-C2-O2
3	D	401	FMN	C4'-C5'-O5'-P
3	C	401	FMN	C4'-C5'-O5'-P
3	A	401	FMN	C3'-C4'-C5'-O5'
3	B	401	FMN	C4'-C5'-O5'-P
4	A	404	EDO	O1-C1-C2-O2
4	D	403	EDO	O1-C1-C2-O2

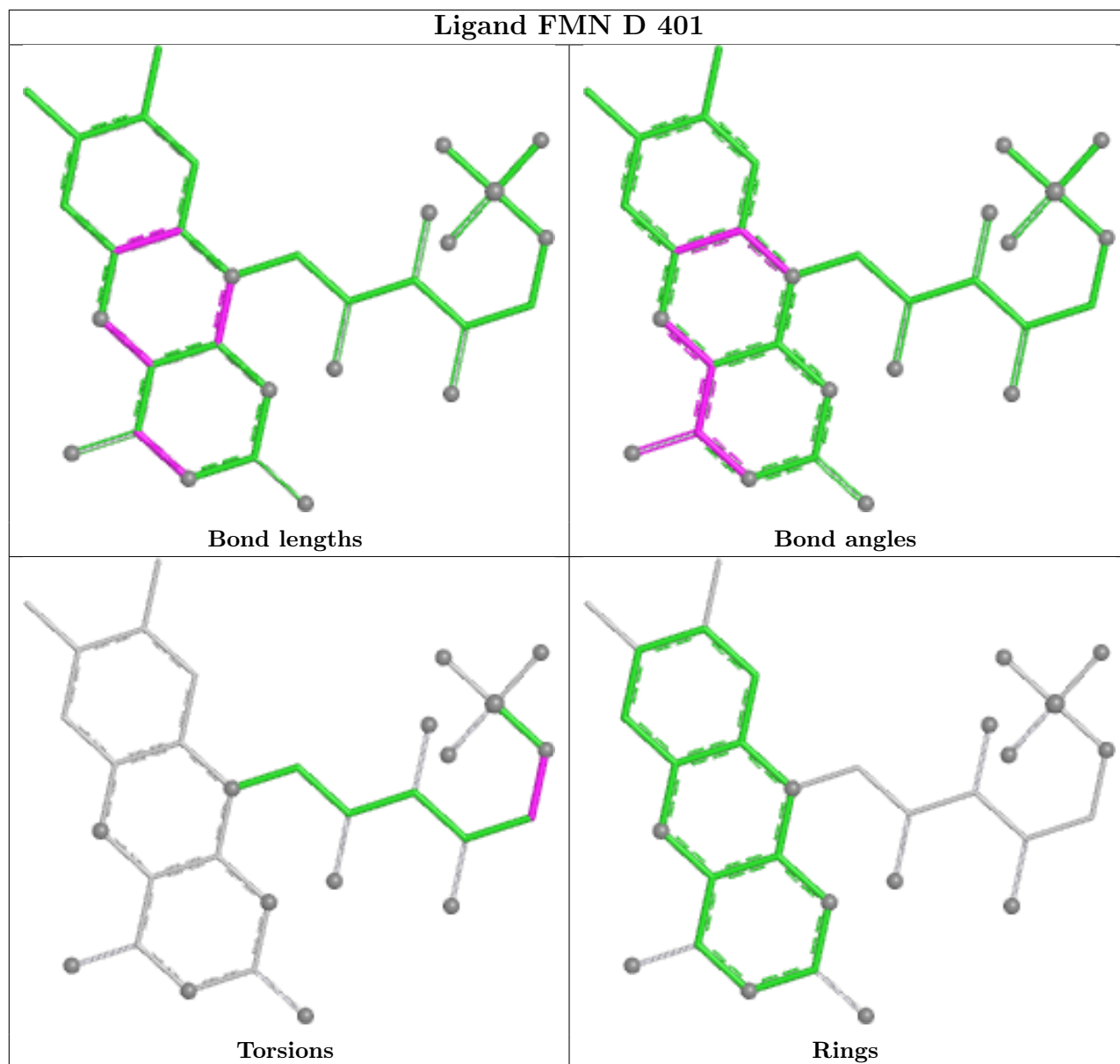
There are no ring outliers.

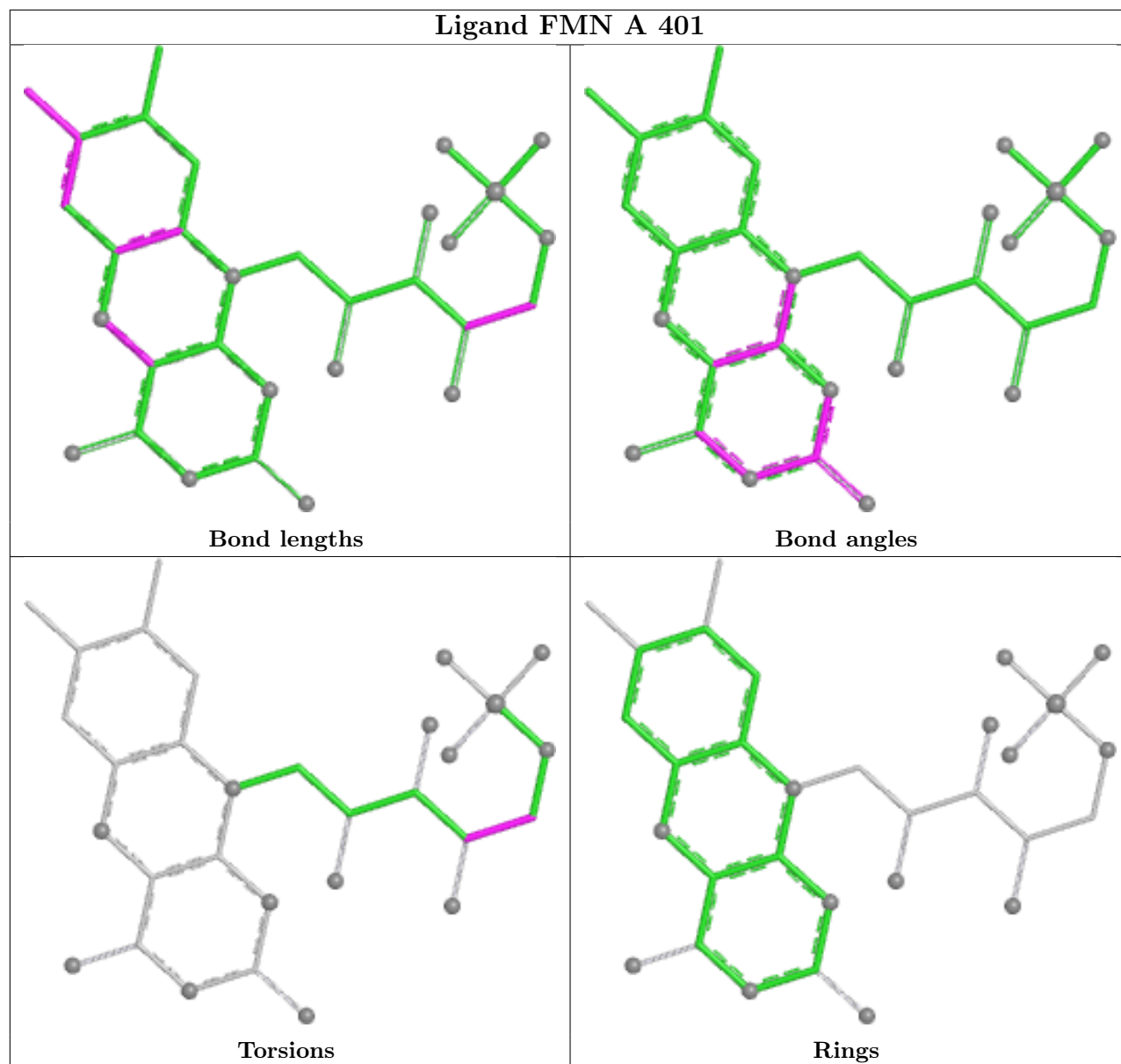
3 monomers are involved in 4 short contacts:

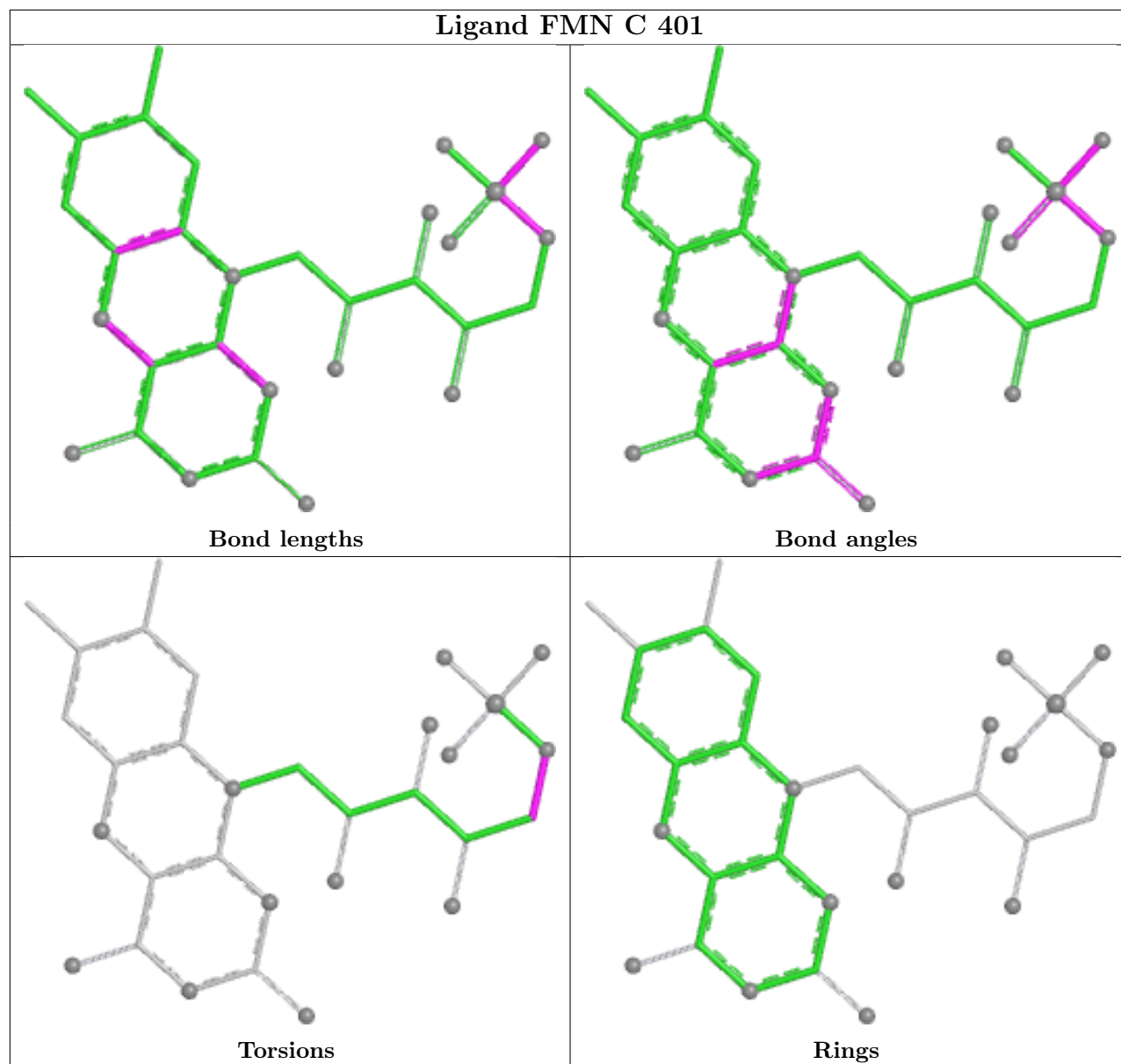


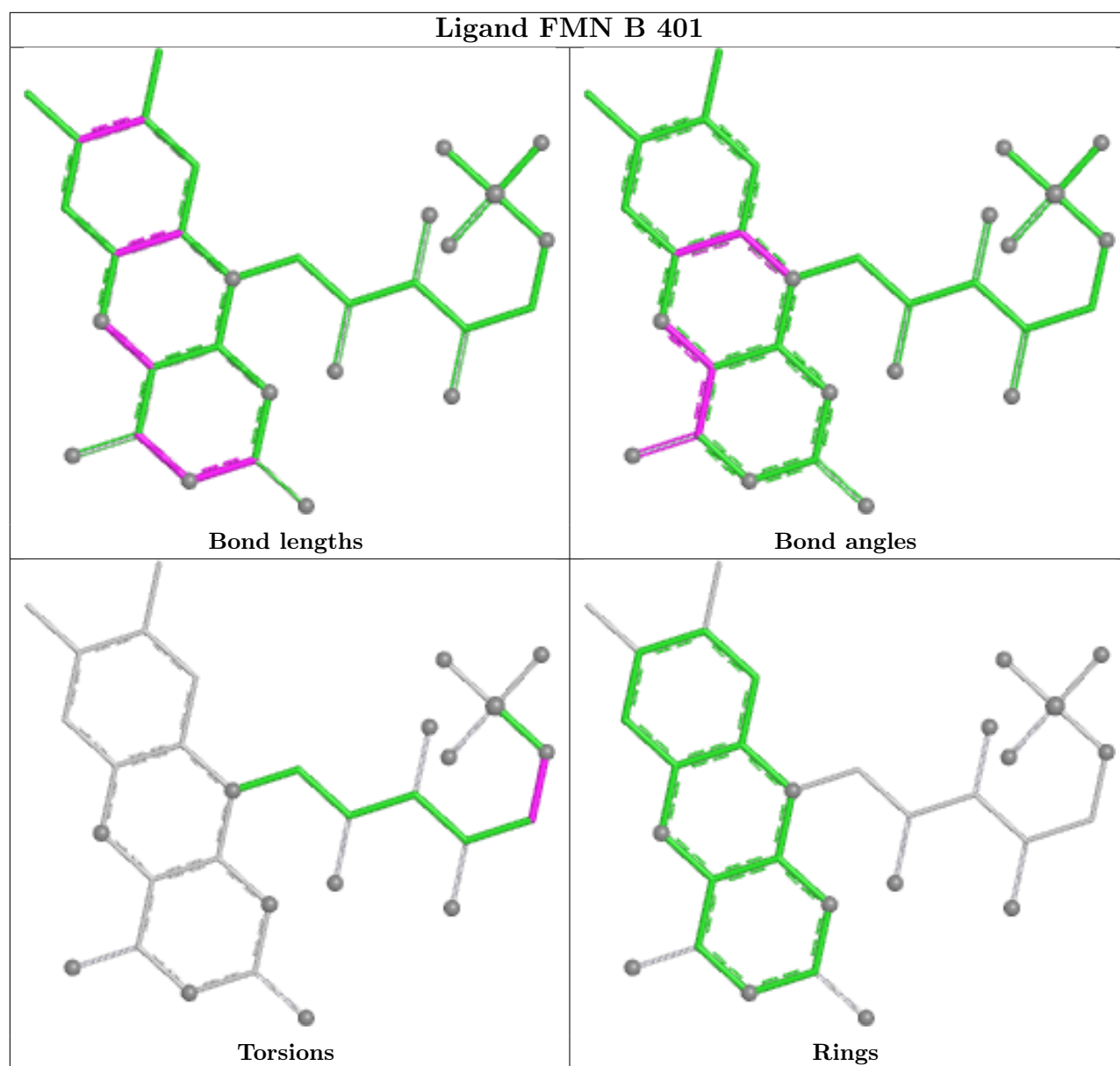
Mol	Chain	Res	Type	Clashes	Symm-Clashes
4	B	402[A]	EDO	1	0
7	B	403	MES	2	0
4	B	402[B]	EDO	1	0

The following is a two-dimensional graphical depiction of Mogul quality analysis of bond lengths, bond angles, torsion angles, and ring geometry for all instances of the Ligand of Interest. In addition, ligands with molecular weight > 250 and outliers as shown on the validation Tables will also be included. For torsion angles, if less than 5% of the Mogul distribution of torsion angles is within 10 degrees of the torsion angle in question, then that torsion angle is considered an outlier. Any bond that is central to one or more torsion angles identified as an outlier by Mogul will be highlighted in the graph. For rings, the root-mean-square deviation (RMSD) between the ring in question and similar rings identified by Mogul is calculated over all ring torsion angles. If the average RMSD is greater than 60 degrees and the minimal RMSD between the ring in question and any Mogul-identified rings is also greater than 60 degrees, then that ring is considered an outlier. The outliers are highlighted in purple. The color gray indicates Mogul did not find sufficient equivalents in the CSD to analyse the geometry.









## 5.7 Other polymers [\(i\)](#)

There are no such residues in this entry.

## 5.8 Polymer linkage issues [\(i\)](#)

There are no chain breaks in this entry.

## 6 Fit of model and data

### 6.1 Protein, DNA and RNA chains

In the following table, the column labelled ‘#RSRZ > 2’ contains the number (and percentage) of RSRZ outliers, followed by percent RSRZ outliers for the chain as percentile scores relative to all X-ray entries and entries of similar resolution. The OWAB column contains the minimum, median, 95<sup>th</sup> percentile and maximum values of the occupancy-weighted average B-factor per residue. The column labelled ‘Q < 0.9’ lists the number of (and percentage) of residues with an average occupancy less than 0.9.

Mol	Chain	Analysed	<RSRZ>	#RSRZ>2	OWAB(Å <sup>2</sup> )	Q<0.9
1	A	131/134 (97%)	0.06	1 (0%) 86 86	14, 19, 32, 38	0
1	C	130/134 (97%)	0.20	6 (4%) 32 34	14, 20, 38, 49	0
1	D	134/134 (100%)	0.28	17 (12%) 3 3	15, 24, 44, 59	0
2	B	133/134 (99%)	0.14	8 (6%) 21 21	15, 23, 39, 53	0
All	All	528/536 (98%)	0.17	32 (6%) 21 21	14, 21, 38, 59	0

All (32) RSRZ outliers are listed below:

Mol	Chain	Res	Type	RSRZ
2	B	310	LYS	6.2
1	C	180	MET	4.6
1	D	311	GLU	4.3
1	D	179	ALA	4.2
1	D	309	GLU	4.1
1	C	306	LYS	3.6
2	B	309	GLU	3.6
1	D	310	ASN	3.4
1	D	251	GLU	3.4
1	C	307	ASN	3.2
1	D	178	GLY	3.0
1	D	308	GLU	3.0
1	D	252	ARG	2.8
1	D	254	GLU	2.8
1	D	306	LYS	2.8
2	B	252	ARG	2.8
1	D	248	LYS	2.7
1	C	181	ASP	2.7
1	D	302	LYS	2.7
2	B	178[A]	GLY	2.7
2	B	307	ASN	2.6

*Continued on next page...*

*Continued from previous page...*

Mol	Chain	Res	Type	RSRZ
1	D	307	ASN	2.6
1	C	309	GLU	2.5
1	D	300	TYR	2.5
1	D	304	PHE	2.5
1	D	298	GLU	2.4
1	D	253	GLY	2.4
1	C	308	GLU	2.4
1	A	252	ARG	2.3
2	B	184	LEU	2.2
2	B	180	MET	2.2
2	B	308	GLU	2.1

## 6.2 Non-standard residues in protein, DNA, RNA chains [i](#)

There are no non-standard protein/DNA/RNA residues in this entry.

## 6.3 Carbohydrates [i](#)

There are no monosaccharides in this entry.

## 6.4 Ligands [i](#)

In the following table, the Atoms column lists the number of modelled atoms in the group and the number defined in the chemical component dictionary. The B-factors column lists the minimum, median, 95<sup>th</sup> percentile and maximum values of B factors of atoms in the group. The column labelled 'Q<0.9' lists the number of atoms with occupancy less than 0.9.

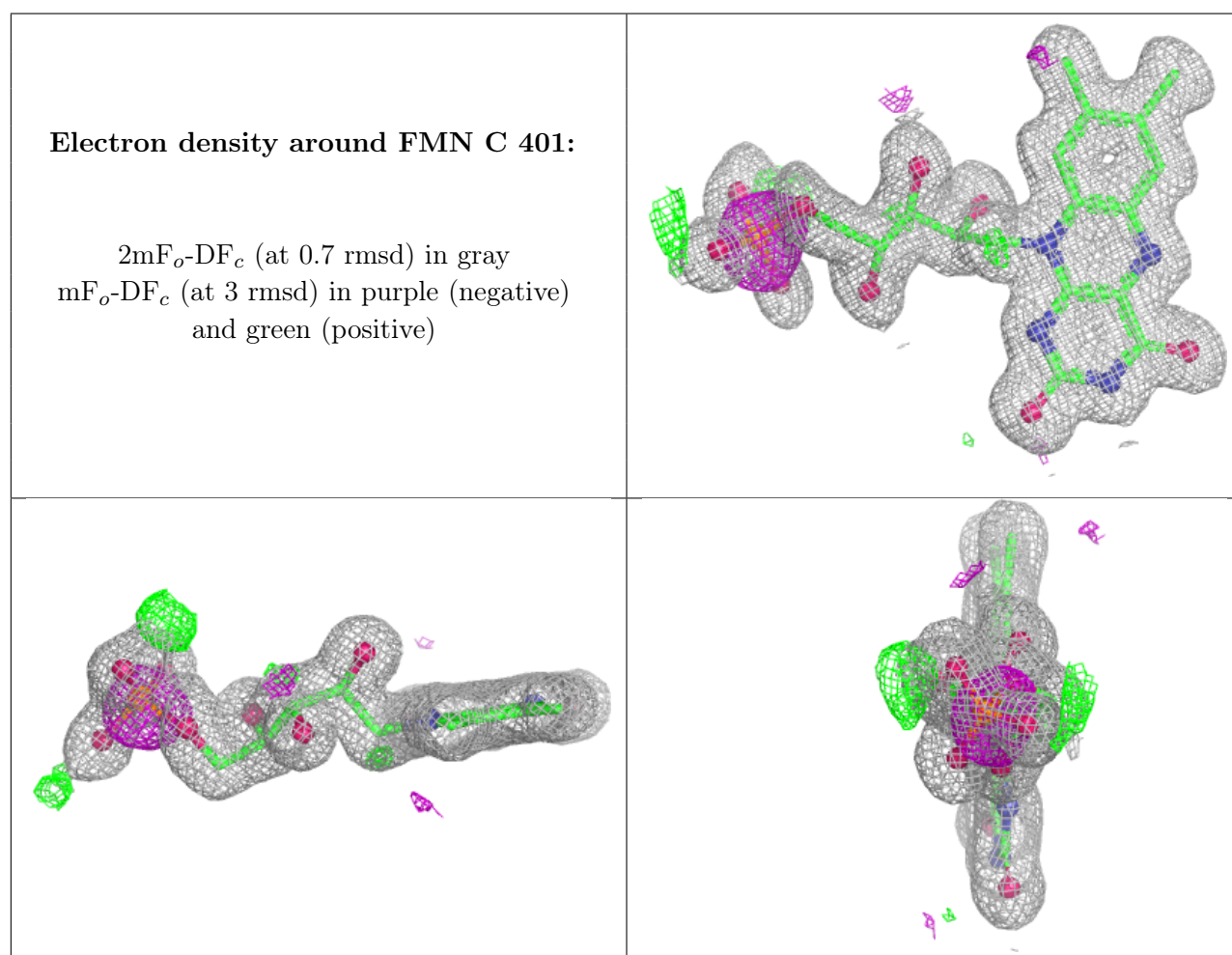
Mol	Type	Chain	Res	Atoms	RSCC	RSR	B-factors(Å <sup>2</sup> )	Q<0.9
4	EDO	A	404	4/4	0.75	0.35	40,46,46,47	0
5	ACT	A	405	4/4	0.77	0.21	34,35,42,47	0
4	EDO	D	403	4/4	0.84	0.40	36,36,39,40	0
4	EDO	A	403	4/4	0.88	0.40	37,37,38,52	0
4	EDO	B	402[A]	4/4	0.93	0.12	21,23,28,34	4
4	EDO	B	402[B]	4/4	0.93	0.12	23,24,25,29	4
4	EDO	D	402	4/4	0.94	0.07	22,22,26,30	0
3	FMN	C	401	31/31	0.94	0.08	13,15,27,29	4
4	EDO	A	402	4/4	0.94	0.14	28,32,33,44	0
3	FMN	D	401	31/31	0.95	0.07	17,19,27,30	4
3	FMN	A	401	31/31	0.96	0.09	12,14,27,31	4
7	MES	B	403	12/12	0.96	0.09	28,30,35,42	12

*Continued on next page...*

Continued from previous page...

Mol	Type	Chain	Res	Atoms	RSCC	RSR	B-factors( $\text{\AA}^2$ )	Q<0.9
3	FMN	B	401	31/31	0.97	0.06	15,17,28,32	0
6	CL	D	404	1/1	0.98	0.21	39,39,39,39	0
6	CL	B	404	1/1	0.98	0.06	32,32,32,32	0
6	CL	A	406	1/1	0.99	0.10	27,27,27,27	0
6	CL	C	402	1/1	0.99	0.08	29,29,29,29	0

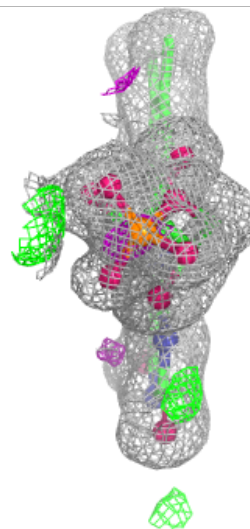
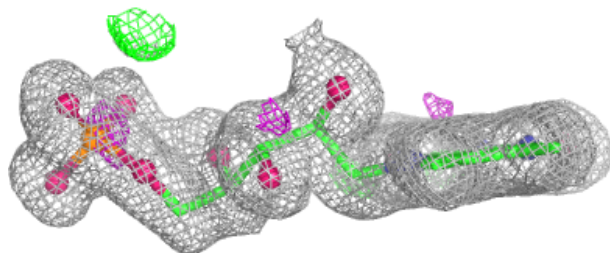
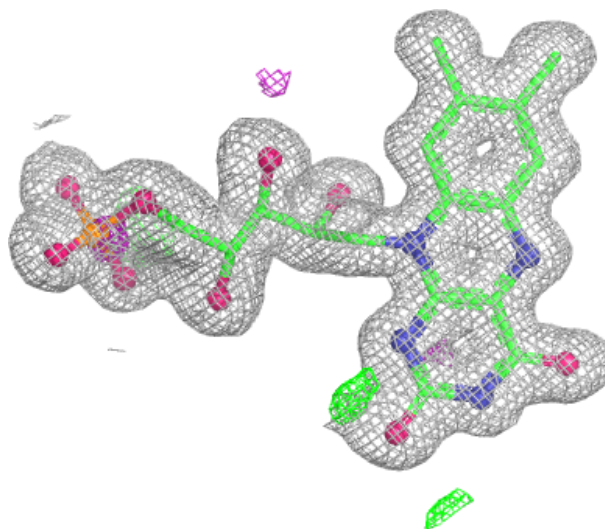
The following is a graphical depiction of the model fit to experimental electron density of all instances of the Ligand of Interest. In addition, ligands with molecular weight > 250 and outliers as shown on the geometry validation Tables will also be included. Each fit is shown from different orientation to approximate a three-dimensional view.

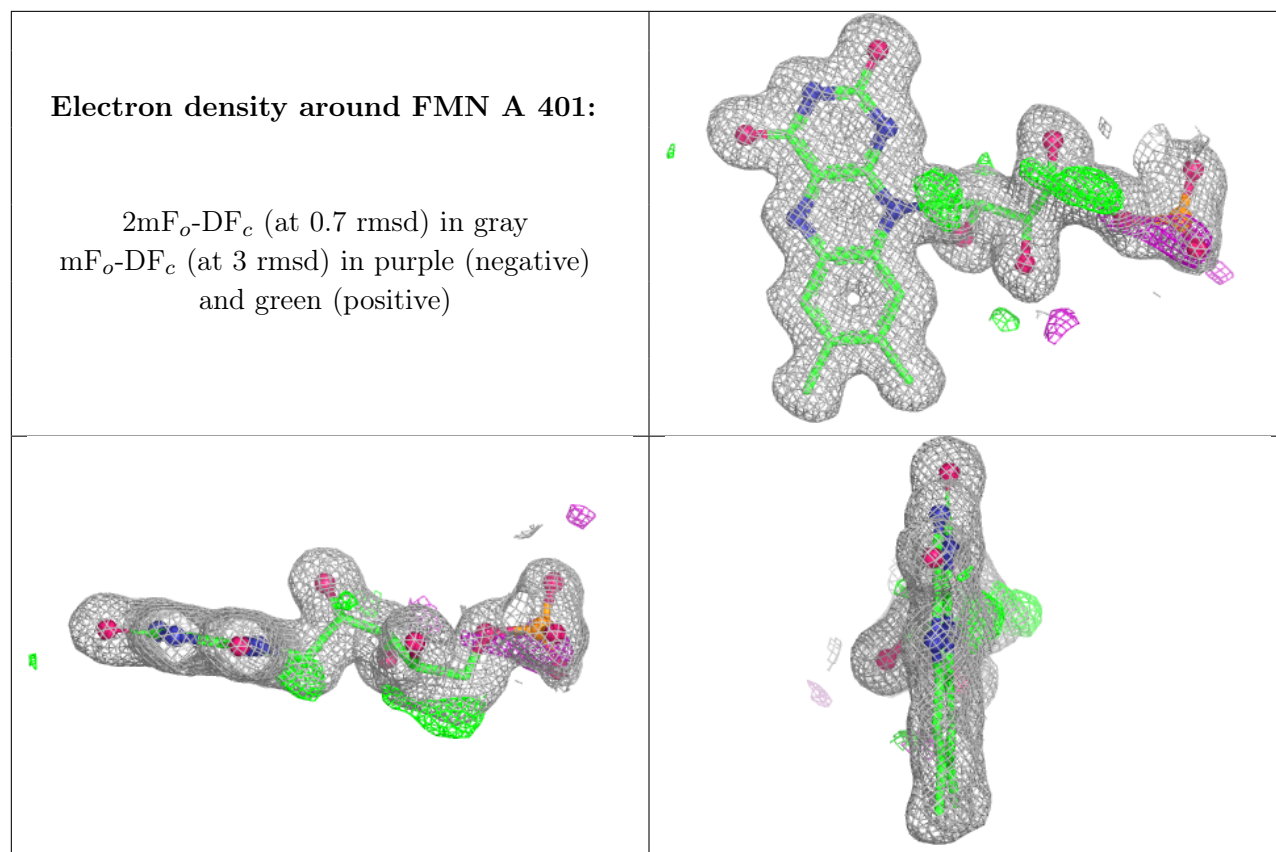


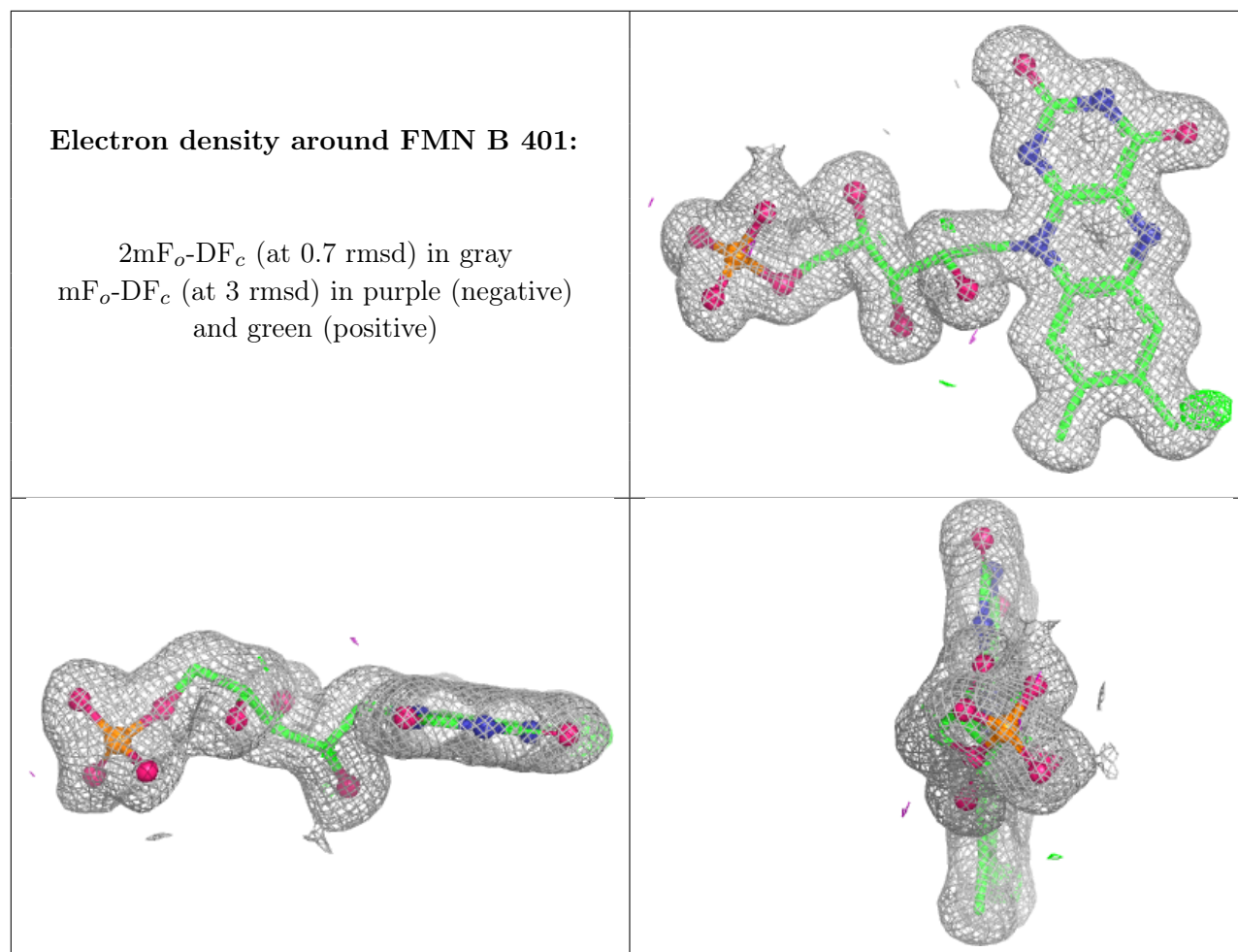


**Electron density around FMN D 401:**

$2mF_o-DF_c$  (at 0.7 rmsd) in gray  
 $mF_o-DF_c$  (at 3 rmsd) in purple (negative)  
and green (positive)







## 6.5 Other polymers [i](#)

There are no such residues in this entry.