



# Full wwPDB X-ray Structure Validation Report ⓘ

Mar 9, 2018 – 11:54 am GMT

PDB ID : 3I33  
Title : Crystal structure of the human 70kDa heat shock protein 2 (Hsp70-2) ATPase domain in complex with ADP and inorganic phosphate  
Authors : Wisniewska, M.; Karlberg, T.; Arrowsmith, C.H.; Berglund, H.; Bountra, C.; Collins, R.; Edwards, A.M.; Flodin, S.; Flores, A.; Graslund, S.; Hammarstrom, M.; Johansson, A.; Johansson, I.; Kotenyova, T.; Kotzsch, A.; Nielsen, T.K.; Nordlund, P.; Nyman, T.; Moche, M.; Persson, C.; Roos, A.K.; Sagemark, J.; Schutz, P.; Siponen, M.I.; Thorsell, A.G.; Tresaugues, L.; Van den Berg, S.; Weigelt, J.; Welin, M.; Schueler, H.; Structural Genomics Consortium (SGC)  
Deposited on : 2009-06-30  
Resolution : 1.30 Å(reported)

This is a Full wwPDB X-ray Structure Validation Report for a publicly released PDB entry.

We welcome your comments at [validation@mail.wwpdb.org](mailto:validation@mail.wwpdb.org)

A user guide is available at

<https://www.wwpdb.org/validation/2017/XrayValidationReportHelp>

with specific help available everywhere you see the ⓘ symbol.

---

The following versions of software and data (see [references ⓘ](#)) were used in the production of this report:

MolProbity : 4.02b-467  
Mogul : 1.7.3 (157068), CSD as539be (2018)  
Xtriage (Phenix) : 1.13  
EDS : trunk30967  
Percentile statistics : 20171227.v01 (using entries in the PDB archive December 27th 2017)  
Refmac : 5.8.0158  
CCP4 : 7.0 (Gargrove)  
Ideal geometry (proteins) : Engh & Huber (2001)  
Ideal geometry (DNA, RNA) : Parkinson et al. (1996)

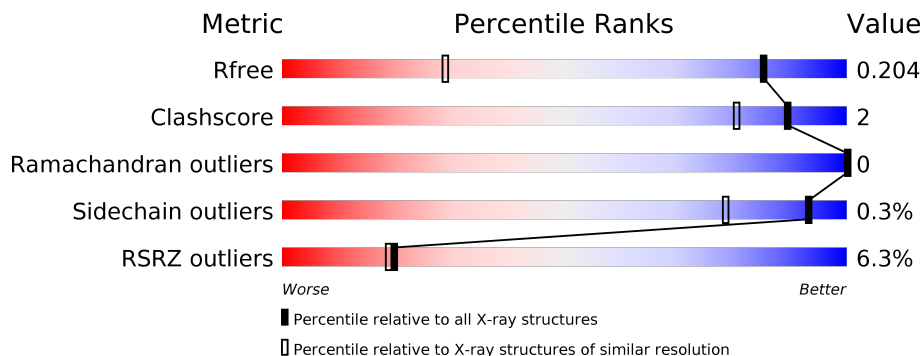
# 1 Overall quality at a glance

The following experimental techniques were used to determine the structure:

*X-RAY DIFFRACTION*

The reported resolution of this entry is 1.30 Å.

Percentile scores (ranging between 0-100) for global validation metrics of the entry are shown in the following graphic. The table shows the number of entries on which the scores are based.



Metric	Whole archive (#Entries)	Similar resolution (#Entries, resolution range(Å))
$R_{free}$	111664	1286 (1.32-1.28)
Clashscore	122126	1332 (1.32-1.28)
Ramachandran outliers	120053	1282 (1.32-1.28)
Sidechain outliers	120020	1282 (1.32-1.28)
RSRZ outliers	108989	1250 (1.32-1.28)

The table below summarises the geometric issues observed across the polymeric chains and their fit to the electron density. The red, orange, yellow and green segments on the lower bar indicate the fraction of residues that contain outliers for  $\geq 3$ , 2, 1 and 0 types of geometric quality criteria. A grey segment represents the fraction of residues that are not modelled. The numeric value for each fraction is indicated below the corresponding segment, with a dot representing fractions  $\leq 5\%$ . The upper red bar (where present) indicates the fraction of residues that have poor fit to the electron density. The numeric value is given above the bar.

Mol	Chain	Length	Quality of chain
1	A	404	

## 2 Entry composition

There are 6 unique types of molecules in this entry. The entry contains 3318 atoms, of which 0 are hydrogens and 0 are deuteriums.

In the tables below, the ZeroOcc column contains the number of atoms modelled with zero occupancy, the AltConf column contains the number of residues with at least one atom in alternate conformation and the Trace column contains the number of residues modelled with at most 2 atoms.

- Molecule 1 is a protein called Heat shock-related 70 kDa protein 2.

Mol	Chain	Residues	Atoms					ZeroOcc	AltConf	Trace
			Total	C	N	O	S			
1	A	380	2934	1852	508	564	10	0	5	0

There are 23 discrepancies between the modelled and reference sequences:

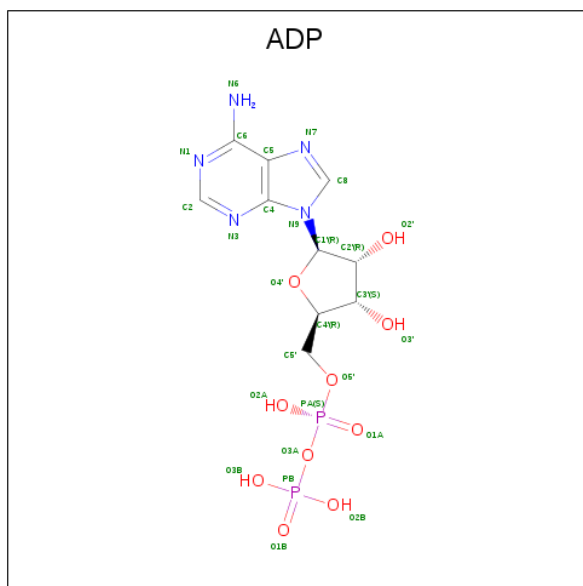
Chain	Residue	Modelled	Actual	Comment	Reference
A	-17	MET	-	EXPRESSION TAG	UNP P54652
A	-16	HIS	-	EXPRESSION TAG	UNP P54652
A	-15	HIS	-	EXPRESSION TAG	UNP P54652
A	-14	HIS	-	EXPRESSION TAG	UNP P54652
A	-13	HIS	-	EXPRESSION TAG	UNP P54652
A	-12	HIS	-	EXPRESSION TAG	UNP P54652
A	-11	HIS	-	EXPRESSION TAG	UNP P54652
A	-10	SER	-	EXPRESSION TAG	UNP P54652
A	-9	SER	-	EXPRESSION TAG	UNP P54652
A	-8	GLY	-	EXPRESSION TAG	UNP P54652
A	-7	VAL	-	EXPRESSION TAG	UNP P54652
A	-6	ASP	-	EXPRESSION TAG	UNP P54652
A	-5	LEU	-	EXPRESSION TAG	UNP P54652
A	-4	GLY	-	EXPRESSION TAG	UNP P54652
A	-3	THR	-	EXPRESSION TAG	UNP P54652
A	-2	GLU	-	EXPRESSION TAG	UNP P54652
A	-1	ASN	-	EXPRESSION TAG	UNP P54652
A	0	LEU	-	EXPRESSION TAG	UNP P54652
A	1	TYR	-	EXPRESSION TAG	UNP P54652
A	2	PHE	-	EXPRESSION TAG	UNP P54652
A	3	GLN	-	EXPRESSION TAG	UNP P54652
A	4	SER	-	EXPRESSION TAG	UNP P54652
A	5	MET	-	EXPRESSION TAG	UNP P54652

- Molecule 2 is PHOSPHATE ION (three-letter code: PO4) (formula: O<sub>4</sub>P).



Mol	Chain	Residues	Atoms			ZeroOcc	AltConf
2	A	1	Total	O	P	0	0
			5	4	1		

- Molecule 3 is ADENOSINE-5'-DIPHOSPHATE (three-letter code: ADP) (formula:  $C_{10}H_{15}N_5O_{10}P_2$ ).

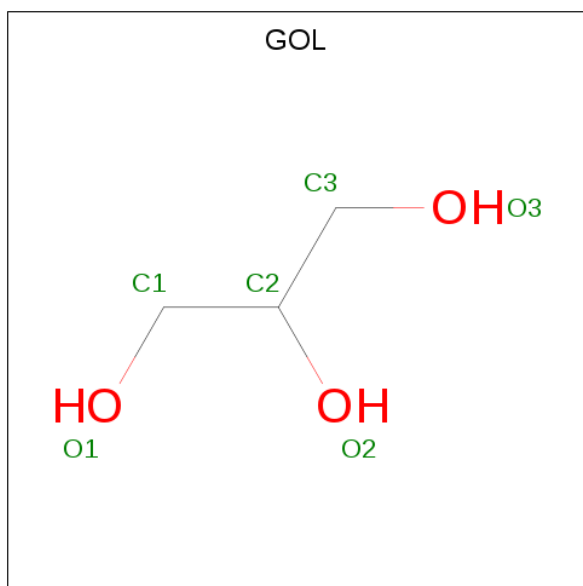


Mol	Chain	Residues	Atoms				ZeroOcc	AltConf	
3	A	1	Total	C	N	O	P	0	0
			27	10	5	10	2		

- Molecule 4 is MAGNESIUM ION (three-letter code: MG) (formula: Mg).

Mol	Chain	Residues	Atoms	ZeroOcc	AltConf
4	A	1	Total Mg 1 1	0	0

- Molecule 5 is GLYCEROL (three-letter code: GOL) (formula: C<sub>3</sub>H<sub>8</sub>O<sub>3</sub>).



Mol	Chain	Residues	Atoms	ZeroOcc	AltConf
5	A	1	Total C O 6 3 3	0	0

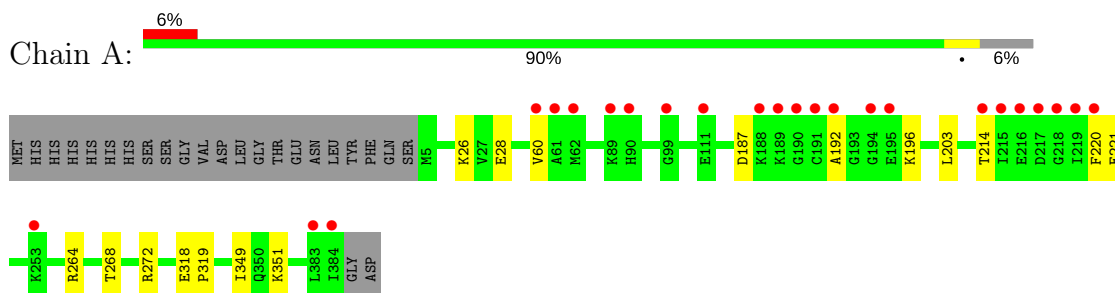
- Molecule 6 is water.

Mol	Chain	Residues	Atoms	ZeroOcc	AltConf
6	A	345	Total O 345 345	0	0

### 3 Residue-property plots [i](#)

These plots are drawn for all protein, RNA and DNA chains in the entry. The first graphic for a chain summarises the proportions of the various outlier classes displayed in the second graphic. The second graphic shows the sequence view annotated by issues in geometry and electron density. Residues are color-coded according to the number of geometric quality criteria for which they contain at least one outlier: green = 0, yellow = 1, orange = 2 and red = 3 or more. A red dot above a residue indicates a poor fit to the electron density ( $RSRZ > 2$ ). Stretches of 2 or more consecutive residues without any outlier are shown as a green connector. Residues present in the sample, but not in the model, are shown in grey.

- Molecule 1: Heat shock-related 70 kDa protein 2



## 4 Data and refinement statistics

Property	Value	Source
Space group	P 21 21 21	Depositor
Cell constants a, b, c, $\alpha$ , $\beta$ , $\gamma$	48.18Å 78.60Å 93.99Å 90.00° 90.00° 90.00°	Depositor
Resolution (Å)	25.56 – 1.30 26.20 – 1.30	Depositor EDS
% Data completeness (in resolution range)	99.1 (25.56-1.30) 99.1 (26.20-1.30)	Depositor EDS
$R_{merge}$	0.14	Depositor
$R_{sym}$	(Not available)	Depositor
$\langle I/\sigma(I) \rangle$ <sup>1</sup>	4.44 (at 1.30Å)	Xtrriage
Refinement program	REFMAC 5.5.0035	Depositor
R, $R_{free}$	0.183 , 0.199 0.190 , 0.204	Depositor DCC
$R_{free}$ test set	4417 reflections (5.04%)	wwPDB-VP
Wilson B-factor (Å <sup>2</sup> )	10.0	Xtrriage
Anisotropy	0.096	Xtrriage
Bulk solvent $k_{sol}$ (e/Å <sup>3</sup> ), $B_{sol}$ (Å <sup>2</sup> )	0.43 , 46.2	EDS
L-test for twinning <sup>2</sup>	$\langle  L  \rangle = 0.49$ , $\langle L^2 \rangle = 0.32$	Xtrriage
Estimated twinning fraction	No twinning to report.	Xtrriage
$F_o, F_c$ correlation	0.95	EDS
Total number of atoms	3318	wwPDB-VP
Average B, all atoms (Å <sup>2</sup> )	13.0	wwPDB-VP

Xtrriage's analysis on translational NCS is as follows: *The largest off-origin peak in the Patterson function is 5.38% of the height of the origin peak. No significant pseudotranslation is detected.*

<sup>1</sup>Intensities estimated from amplitudes.

<sup>2</sup>Theoretical values of  $\langle |L| \rangle$ ,  $\langle L^2 \rangle$  for acentric reflections are 0.5, 0.333 respectively for untwinned datasets, and 0.375, 0.2 for perfectly twinned datasets.

## 5 Model quality [i](#)

### 5.1 Standard geometry [i](#)

Bond lengths and bond angles in the following residue types are not validated in this section: GOL, PO4, MG, ADP

The Z score for a bond length (or angle) is the number of standard deviations the observed value is removed from the expected value. A bond length (or angle) with  $|Z| > 5$  is considered an outlier worth inspection. RMSZ is the root-mean-square of all Z scores of the bond lengths (or angles).

Mol	Chain	Bond lengths		Bond angles	
		RMSZ	# Z  >5	RMSZ	# Z  >5
1	A	0.36	0/2989	0.58	0/4035

There are no bond length outliers.

There are no bond angle outliers.

There are no chirality outliers.

There are no planarity outliers.

### 5.2 Too-close contacts [i](#)

In the following table, the Non-H and H(model) columns list the number of non-hydrogen atoms and hydrogen atoms in the chain respectively. The H(added) column lists the number of hydrogen atoms added and optimized by MolProbity. The Clashes column lists the number of clashes within the asymmetric unit, whereas Symm-Clashes lists symmetry related clashes.

Mol	Chain	Non-H	H(model)	H(added)	Clashes	Symm-Clashes
1	A	2934	0	2942	12	0
2	A	5	0	0	0	0
3	A	27	0	12	0	0
4	A	1	0	0	0	0
5	A	6	0	8	0	0
6	A	345	0	0	0	0
All	All	3318	0	2962	12	0

The all-atom clashscore is defined as the number of clashes found per 1000 atoms (including hydrogen atoms). The all-atom clashscore for this structure is 2.

All (12) close contacts within the same asymmetric unit are listed below, sorted by their clash magnitude.



Atom-1	Atom-2	Interatomic distance (Å)	Clash overlap (Å)
1:A:60:VAL:HG11	1:A:264:ARG:CZ	2.12	0.78
1:A:268:THR:HG22	1:A:272:ARG:NH1	2.10	0.67
1:A:60:VAL:HG11	1:A:264:ARG:NH2	2.12	0.65
1:A:60:VAL:CG1	1:A:264:ARG:NE	2.64	0.60
1:A:60:VAL:HG11	1:A:264:ARG:NE	2.22	0.54
1:A:203:LEU:CD2	1:A:349[B]:ILE:HD13	2.41	0.51
1:A:26:LYS:NZ	1:A:28:GLU:OE2	2.44	0.50
1:A:192:ALA:O	1:A:196:LYS:NZ	2.47	0.47
1:A:268:THR:HG22	1:A:272:ARG:HH11	1.81	0.43
1:A:318:GLU:HB2	1:A:319:PRO:HD3	2.01	0.43
1:A:187:ASP:HB3	1:A:220:PHE:CZ	2.56	0.41
1:A:214[B]:THR:HG22	1:A:221:GLU:HB3	2.03	0.40

There are no symmetry-related clashes.

## 5.3 Torsion angles [i](#)

### 5.3.1 Protein backbone [i](#)

In the following table, the Percentiles column shows the percent Ramachandran outliers of the chain as a percentile score with respect to all X-ray entries followed by that with respect to entries of similar resolution.

The Analysed column shows the number of residues for which the backbone conformation was analysed, and the total number of residues.

Mol	Chain	Analysed	Favoured	Allowed	Outliers	Percentiles
1	A	383/404 (95%)	379 (99%)	4 (1%)	0	<b>100</b> <b>100</b>

There are no Ramachandran outliers to report.

### 5.3.2 Protein sidechains [i](#)

In the following table, the Percentiles column shows the percent sidechain outliers of the chain as a percentile score with respect to all X-ray entries followed by that with respect to entries of similar resolution.

The Analysed column shows the number of residues for which the sidechain conformation was analysed, and the total number of residues.

Mol	Chain	Analysed	Rotameric	Outliers	Percentiles
1	A	309/333 (93%)	308 (100%)	1 (0%)	93 78

All (1) residues with a non-rotameric sidechain are listed below:

Mol	Chain	Res	Type
1	A	351	LYS

Some sidechains can be flipped to improve hydrogen bonding and reduce clashes. There are no such sidechains identified.

### 5.3.3 RNA [i](#)

There are no RNA molecules in this entry.

### 5.4 Non-standard residues in protein, DNA, RNA chains [i](#)

There are no non-standard protein/DNA/RNA residues in this entry.

### 5.5 Carbohydrates [i](#)

There are no carbohydrates in this entry.

### 5.6 Ligand geometry [i](#)

Of 4 ligands modelled in this entry, 1 is monoatomic - leaving 3 for Mogul analysis.

In the following table, the Counts columns list the number of bonds (or angles) for which Mogul statistics could be retrieved, the number of bonds (or angles) that are observed in the model and the number of bonds (or angles) that are defined in the Chemical Component Dictionary. The Link column lists molecule types, if any, to which the group is linked. The Z score for a bond length (or angle) is the number of standard deviations the observed value is removed from the expected value. A bond length (or angle) with  $|Z| > 2$  is considered an outlier worth inspection. RMSZ is the root-mean-square of all Z scores of the bond lengths (or angles).

Mol	Type	Chain	Res	Link	Bond lengths			Bond angles		
					Counts	RMSZ	$\# Z  > 2$	Counts	RMSZ	$\# Z  > 2$
2	PO4	A	387	4	4,4,4	1.21	0	6,6,6	0.90	0
3	ADP	A	388	4	25,29,29	0.90	1 (4%)	25,45,45	1.80	5 (20%)
5	GOL	A	390	-	5,5,5	0.37	0	5,5,5	0.53	0

In the following table, the Chirals column lists the number of chiral outliers, the number of chiral centers analysed, the number of these observed in the model and the number defined in the Chemical Component Dictionary. Similar counts are reported in the Torsion and Rings columns. '-' means no outliers of that kind were identified.

Mol	Type	Chain	Res	Link	Chirals	Torsions	Rings
2	PO4	A	387	4	-	0/0/0/0	0/0/0/0
3	ADP	A	388	4	-	0/12/32/32	0/3/3/3
5	GOL	A	390	-	-	0/4/4/4	0/0/0/0

All (1) bond length outliers are listed below:

Mol	Chain	Res	Type	Atoms	Z	Observed(Å)	Ideal(Å)
3	A	388	ADP	C5-C4	2.12	1.45	1.40

All (5) bond angle outliers are listed below:

Mol	Chain	Res	Type	Atoms	Z	Observed(°)	Ideal(°)
3	A	388	ADP	N3-C2-N1	-5.79	123.91	128.86
3	A	388	ADP	C4'-O4'-C1'	-4.01	105.65	109.83
3	A	388	ADP	N6-C6-N1	2.35	123.45	118.57
3	A	388	ADP	C2-N1-C6	2.41	122.84	118.75
3	A	388	ADP	O3B-PB-O2B	2.58	117.79	107.59

There are no chirality outliers.

There are no torsion outliers.

There are no ring outliers.

No monomer is involved in short contacts.

## 5.7 Other polymers [i](#)

There are no such residues in this entry.

## 5.8 Polymer linkage issues [i](#)

There are no chain breaks in this entry.

## 6 Fit of model and data

### 6.1 Protein, DNA and RNA chains

In the following table, the column labelled ‘#RSRZ > 2’ contains the number (and percentage) of RSRZ outliers, followed by percent RSRZ outliers for the chain as percentile scores relative to all X-ray entries and entries of similar resolution. The OWAB column contains the minimum, median, 95<sup>th</sup> percentile and maximum values of the occupancy-weighted average B-factor per residue. The column labelled ‘Q < 0.9’ lists the number of (and percentage) of residues with an average occupancy less than 0.9.

Mol	Chain	Analysed	<RSRZ>	#RSRZ>2	OWAB(Å <sup>2</sup> )	Q<0.9
1	A	380/404 (94%)	0.39	24 (6%) <span style="border: 1px solid red; padding: 2px;">20</span> <span style="border: 1px solid red; padding: 2px;">19</span>	5, 11, 22, 30	0

All (24) RSRZ outliers are listed below:

Mol	Chain	Res	Type	RSRZ
1	A	190	GLY	11.9
1	A	191	CYS	7.3
1	A	384	ILE	7.1
1	A	62	MET	5.2
1	A	219	ILE	5.1
1	A	217	ASP	4.1
1	A	189	LYS	3.8
1	A	90	HIS	3.7
1	A	218	GLY	3.7
1	A	192	ALA	3.3
1	A	194	GLY	3.3
1	A	253	LYS	3.0
1	A	99	GLY	2.8
1	A	383	LEU	2.8
1	A	195	GLU	2.8
1	A	220	PHE	2.4
1	A	60	VAL	2.4
1	A	215	ILE	2.3
1	A	216	GLU	2.2
1	A	188	LYS	2.2
1	A	214[A]	THR	2.1
1	A	61	ALA	2.1
1	A	111	GLU	2.1
1	A	89	LYS	2.0

## 6.2 Non-standard residues in protein, DNA, RNA chains [i](#)

There are no non-standard protein/DNA/RNA residues in this entry.

## 6.3 Carbohydrates [i](#)

There are no carbohydrates in this entry.

## 6.4 Ligands [i](#)

In the following table, the Atoms column lists the number of modelled atoms in the group and the number defined in the chemical component dictionary. The B-factors column lists the minimum, median, 95<sup>th</sup> percentile and maximum values of B factors of atoms in the group. The column labelled 'Q< 0.9' lists the number of atoms with occupancy less than 0.9.

Mol	Type	Chain	Res	Atoms	RSCC	RSR	B-factors( $\text{\AA}^2$ )	Q<0.9
5	GOL	A	390	6/6	0.80	0.22	12,17,20,20	0
2	PO4	A	387	5/5	0.99	0.05	5,5,6,6	0
3	ADP	A	388	27/27	0.99	0.07	5,6,8,8	0
4	MG	A	389	1/1	1.00	0.07	6,6,6,6	0

## 6.5 Other polymers [i](#)

There are no such residues in this entry.