



Full wwPDB X-ray Structure Validation Report ⓘ

Oct 27, 2024 – 06:02 PM EDT

PDB ID : 1I4U
Title : THE C1 SUBUNIT OF ALPHA-CRUSTACYANIN
Authors : Gordon, E.J.; Leonard, G.A.; McSweeney, S.; Zagalsky, P.F.
Deposited on : 2001-02-23
Resolution : 1.15 Å(reported)

This is a Full wwPDB X-ray Structure Validation Report for a publicly released PDB entry.

We welcome your comments at validation@mail.wwpdb.org

A user guide is available at

<https://www.wwpdb.org/validation/2017/XrayValidationReportHelp>

with specific help available everywhere you see the ⓘ symbol.

The types of validation reports are described at

<http://www.wwpdb.org/validation/2017/FAQs#types>.

The following versions of software and data (see [references ⓘ](#)) were used in the production of this report:

MolProbity : 4.02b-467
Mogul : 2022.3.0, CSD as543be (2022)
Xtriage (Phenix) : 1.20.1
EDS : 3.0
Percentile statistics : 20231227.v01 (using entries in the PDB archive December 27th 2023)
CCP4 : 9.0.003 (Gargrove)
Density-Fitness : 1.0.11
Ideal geometry (proteins) : Engh & Huber (2001)
Ideal geometry (DNA, RNA) : Parkinson et al. (1996)
Validation Pipeline (wwPDB-VP) : 2.39

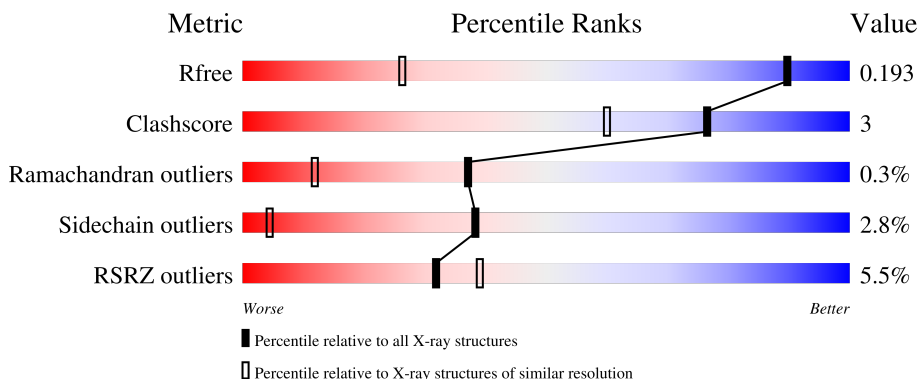
1 Overall quality at a glance

The following experimental techniques were used to determine the structure:

X-RAY DIFFRACTION

The reported resolution of this entry is 1.15 Å.

Percentile scores (ranging between 0-100) for global validation metrics of the entry are shown in the following graphic. The table shows the number of entries on which the scores are based.



Metric	Whole archive (#Entries)	Similar resolution (#Entries, resolution range(Å))
R_{free}	164625	1095 (1.16-1.12)
Clashscore	180529	1248 (1.16-1.12)
Ramachandran outliers	177936	1224 (1.16-1.12)
Sidechain outliers	177891	1224 (1.16-1.12)
RSRZ outliers	164620	1095 (1.16-1.12)

The table below summarises the geometric issues observed across the polymeric chains and their fit to the electron density. The red, orange, yellow and green segments of the lower bar indicate the fraction of residues that contain outliers for ≥ 3 , 2, 1 and 0 types of geometric quality criteria respectively. A grey segment represents the fraction of residues that are not modelled. The numeric value for each fraction is indicated below the corresponding segment, with a dot representing fractions $\leq 5\%$. The upper red bar (where present) indicates the fraction of residues that have poor fit to the electron density. The numeric value is given above the bar.

Mol	Chain	Length	Quality of chain
1	A	181	
1	B	181	

2 Entry composition [i](#)

There are 4 unique types of molecules in this entry. The entry contains 3382 atoms, of which 0 are hydrogens and 0 are deuteriums.

In the tables below, the ZeroOcc column contains the number of atoms modelled with zero occupancy, the AltConf column contains the number of residues with at least one atom in alternate conformation and the Trace column contains the number of residues modelled with at most 2 atoms.

- Molecule 1 is a protein called CRUSTACYANIN.

Mol	Chain	Residues	Atoms					ZeroOcc	AltConf	Trace
			Total	C	N	O	S			
1	A	181	1461	935	239	281	6	0	0	0
1	B	180	1450	928	237	279	6	0	1	0

There are 2 discrepancies between the modelled and reference sequences:

Chain	Residue	Modelled	Actual	Comment	Reference
A	66	GLU	LYS	conflict	UNP P80029
B	66	GLU	LYS	conflict	UNP P80029

- Molecule 2 is SULFATE ION (three-letter code: SO4) (formula: O₄S).



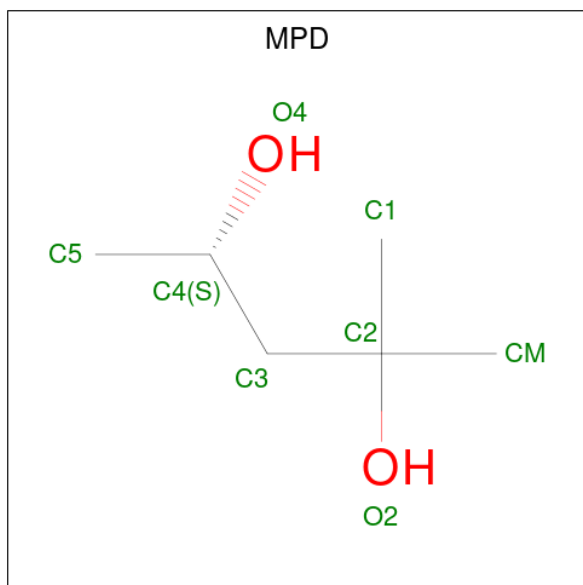
Mol	Chain	Residues	Atoms			ZeroOcc	AltConf
			Total	O	S		
2	A	1	5	4	1	0	0

Continued on next page...

Continued from previous page...

Mol	Chain	Residues	Atoms			ZeroOcc	AltConf
2	B	1	Total	O	S	0	0
			5	4	1		

- Molecule 3 is (4S)-2-METHYL-2,4-PENTANEDIOL (three-letter code: MPD) (formula: $C_6H_{14}O_2$).



Mol	Chain	Residues	Atoms			ZeroOcc	AltConf
3	A	1	Total	C	O	0	0
			8	6	2		
3	A	1	Total	C	O	0	0
			8	6	2		
3	B	1	Total	C	O	0	0
			8	6	2		
3	B	1	Total	C	O	0	0
			8	6	2		

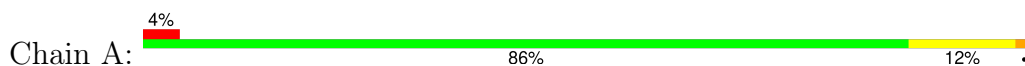
- Molecule 4 is water.

Mol	Chain	Residues	Atoms		ZeroOcc	AltConf
4	A	201	Total	O	0	0
			201	201		
4	B	228	Total	O	0	0
			228	228		

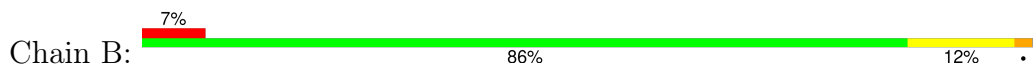
3 Residue-property plots [i](#)

These plots are drawn for all protein, RNA, DNA and oligosaccharide chains in the entry. The first graphic for a chain summarises the proportions of the various outlier classes displayed in the second graphic. The second graphic shows the sequence view annotated by issues in geometry and electron density. Residues are color-coded according to the number of geometric quality criteria for which they contain at least one outlier: green = 0, yellow = 1, orange = 2 and red = 3 or more. A red dot above a residue indicates a poor fit to the electron density ($RSRZ > 2$). Stretches of 2 or more consecutive residues without any outlier are shown as a green connector. Residues present in the sample, but not in the model, are shown in grey.

- Molecule 1: CRUSTACYANIN



- Molecule 1: CRUSTACYANIN



4 Data and refinement statistics

Property	Value	Source
Space group	P 21 21 21	Depositor
Cell constants a, b, c, α , β , γ	41.23Å 79.72Å 109.49Å 90.00° 90.00° 90.00°	Depositor
Resolution (Å)	40.00 – 1.15 40.00 – 1.15	Depositor EDS
% Data completeness (in resolution range)	(Not available) (40.00-1.15) 99.6 (40.00-1.15)	Depositor EDS
R_{merge}	0.05	Depositor
R_{sym}	0.05	Depositor
$\langle I/\sigma(I) \rangle$ ¹	2.58 (at 1.15Å)	Xtrriage
Refinement program	SHELXL-97	Depositor
R, R_{free}	0.150 , 0.188 0.156 , 0.193	Depositor DCC
R_{free} test set	6420 reflections (5.01%)	wwPDB-VP
Wilson B-factor (Å ²)	11.8	Xtrriage
Anisotropy	0.235	Xtrriage
Bulk solvent k_{sol} (e/Å ³), B_{sol} (Å ²)	0.36 , 50.6	EDS
L-test for twinning ²	$\langle L \rangle = 0.50$, $\langle L^2 \rangle = 0.33$	Xtrriage
Estimated twinning fraction	No twinning to report.	Xtrriage
F_o, F_c correlation	0.97	EDS
Total number of atoms	3382	wwPDB-VP
Average B, all atoms (Å ²)	19.0	wwPDB-VP

Xtrriage's analysis on translational NCS is as follows: *The largest off-origin peak in the Patterson function is 5.42% of the height of the origin peak. No significant pseudotranslation is detected.*

¹Intensities estimated from amplitudes.

²Theoretical values of $\langle |L| \rangle$, $\langle L^2 \rangle$ for acentric reflections are 0.5, 0.333 respectively for untwinned datasets, and 0.375, 0.2 for perfectly twinned datasets.

5 Model quality [i](#)

5.1 Standard geometry [i](#)

Bond lengths and bond angles in the following residue types are not validated in this section: SO4, MPD

The Z score for a bond length (or angle) is the number of standard deviations the observed value is removed from the expected value. A bond length (or angle) with $|Z| > 5$ is considered an outlier worth inspection. RMSZ is the root-mean-square of all Z scores of the bond lengths (or angles).

Mol	Chain	Bond lengths		Bond angles	
		RMSZ	# Z >5	RMSZ	# Z >5
1	A	0.69	1/1501 (0.1%)	1.42	15/2038 (0.7%)
1	B	0.74	0/1497	1.44	20/2031 (1.0%)
All	All	0.72	1/2998 (0.0%)	1.43	35/4069 (0.9%)

All (1) bond length outliers are listed below:

Mol	Chain	Res	Type	Atoms	Z	Observed(Å)	Ideal(Å)
1	A	113	SER	CB-OG	-5.48	1.35	1.42

All (35) bond angle outliers are listed below:

Mol	Chain	Res	Type	Atoms	Z	Observed(°)	Ideal(°)
1	B	28	ARG	NE-CZ-NH1	20.18	130.39	120.30
1	A	17	ARG	NE-CZ-NH1	19.96	130.28	120.30
1	B	17	ARG	NE-CZ-NH1	13.27	126.93	120.30
1	A	56	TYR	CB-CG-CD1	11.28	127.77	121.00
1	B	2	LYS	C-N-CA	9.88	146.40	121.70
1	B	79	ARG	NE-CZ-NH1	9.62	125.11	120.30
1	A	66	GLU	OE1-CD-OE2	8.63	133.66	123.30
1	B	17	ARG	NH1-CZ-NH2	-8.38	110.18	119.40
1	A	56	TYR	CZ-CE2-CD2	8.36	127.32	119.80
1	B	179	LYS	C-N-CA	8.34	142.54	121.70
1	A	56	TYR	CG-CD1-CE1	7.99	127.69	121.30
1	A	144	ASP	CB-CG-OD1	7.98	125.48	118.30
1	B	28	ARG	NE-CZ-NH2	-7.87	116.36	120.30
1	A	79	ARG	NE-CZ-NH1	7.25	123.92	120.30
1	B	175	TYR	CB-CG-CD1	7.16	125.29	121.00
1	A	17	ARG	NH1-CZ-NH2	-6.90	111.81	119.40
1	B	15	VAL	CG1-CB-CG2	6.74	121.69	110.90
1	A	163	ARG	NE-CZ-NH1	6.49	123.55	120.30

Continued on next page...

Continued from previous page...

Mol	Chain	Res	Type	Atoms	Z	Observed(°)	Ideal(°)
1	A	5	ASP	CB-CG-OD1	6.21	123.89	118.30
1	B	79	ARG	NE-CZ-NH2	-6.21	117.19	120.30
1	B	56	TYR	CB-CG-CD1	6.20	124.72	121.00
1	B	97	TYR	CB-CG-CD1	6.19	124.71	121.00
1	A	163	ARG	NE-CZ-NH2	-6.12	117.24	120.30
1	B	160	ASP	CB-CG-OD1	5.95	123.65	118.30
1	B	119	TYR	CB-CG-CD2	-5.94	117.44	121.00
1	B	90	GLU	OE1-CD-OE2	-5.86	116.27	123.30
1	B	16	ASP	CA-C-O	5.78	132.24	120.10
1	A	175	TYR	CB-CG-CD1	5.65	124.39	121.00
1	B	28	ARG	NH1-CZ-NH2	-5.60	113.24	119.40
1	A	37	GLN	OE1-CD-NE2	-5.41	109.47	121.90
1	B	176	ASP	CB-CG-OD1	5.20	122.98	118.30
1	B	146	TYR	CG-CD1-CE1	5.19	125.45	121.30
1	B	17	ARG	NE-CZ-NH2	5.16	122.88	120.30
1	A	101	PHE	CB-CG-CD1	5.07	124.35	120.80
1	A	31	TYR	CB-CG-CD1	5.01	124.01	121.00

There are no chirality outliers.

There are no planarity outliers.

5.2 Too-close contacts [\(i\)](#)

In the following table, the Non-H and H(model) columns list the number of non-hydrogen atoms and hydrogen atoms in the chain respectively. The H(added) column lists the number of hydrogen atoms added and optimized by MolProbity. The Clashes column lists the number of clashes within the asymmetric unit, whereas Symm-Clashes lists symmetry-related clashes.

Mol	Chain	Non-H	H(model)	H(added)	Clashes	Symm-Clashes
1	A	1461	0	1383	10	0
1	B	1450	0	1352	10	0
2	A	5	0	0	0	0
2	B	5	0	0	0	0
3	A	16	0	27	0	0
3	B	16	0	28	0	0
4	A	201	0	0	1	0
4	B	228	0	0	3	0
All	All	3382	0	2790	16	0

The all-atom clashscore is defined as the number of clashes found per 1000 atoms (including hydrogen atoms). The all-atom clashscore for this structure is 3.

All (16) close contacts within the same asymmetric unit are listed below, sorted by their clash magnitude.

Atom-1	Atom-2	Interatomic distance (Å)	Clash overlap (Å)
1:B:179:LYS:HE2	4:B:1202:HOH:O	1.98	0.61
1:A:11:LYS:HG2	1:A:12:CYS:O	2.03	0.59
1:B:175:TYR:O	1:B:179:LYS:HG3	2.02	0.57
1:A:18:ASN:HB2	4:A:1108:HOH:O	2.05	0.56
1:B:166:LYS:HD3	4:B:1180:HOH:O	2.11	0.51
1:A:14:SER:O	1:A:15:VAL:O	2.29	0.50
1:A:60:GLY:O	1:A:61:LYS:HD3	2.13	0.48
1:A:101:PHE:CD1	1:B:104:PRO:HD2	2.51	0.46
1:A:11:LYS:HG2	1:A:12:CYS:N	2.31	0.45
1:A:104:PRO:HD2	1:B:101:PHE:CD1	2.51	0.45
1:B:155:LYS:HE3	1:B:161:THR:OG1	2.16	0.45
1:B:166:LYS:NZ	4:B:1177:HOH:O	2.49	0.45
1:B:177:THR:O	1:B:180:THR:HB	2.18	0.43
1:A:104:PRO:HD2	1:B:101:PHE:CE1	2.55	0.41
1:A:122:ILE:HB	1:B:101:PHE:CE1	2.56	0.40
1:A:92:HIS:CE1	1:A:104:PRO:HB3	2.56	0.40

There are no symmetry-related clashes.

5.3 Torsion angles [i](#)

5.3.1 Protein backbone [i](#)

In the following table, the Percentiles column shows the percent Ramachandran outliers of the chain as a percentile score with respect to all X-ray entries followed by that with respect to entries of similar resolution.

The Analysed column shows the number of residues for which the backbone conformation was analysed, and the total number of residues.

Mol	Chain	Analysed	Favoured	Allowed	Outliers	Percentiles	
1	A	179/181 (99%)	173 (97%)	5 (3%)	1 (1%)	22	4
1	B	178/181 (98%)	174 (98%)	4 (2%)	0	100	100
All	All	357/362 (99%)	347 (97%)	9 (2%)	1 (0%)	37	12

All (1) Ramachandran outliers are listed below:

Mol	Chain	Res	Type
1	A	15	VAL

5.3.2 Protein sidechains [i](#)

In the following table, the Percentiles column shows the percent sidechain outliers of the chain as a percentile score with respect to all X-ray entries followed by that with respect to entries of similar resolution.

The Analysed column shows the number of residues for which the sidechain conformation was analysed, and the total number of residues.

Mol	Chain	Analysed	Rotameric	Outliers	Percentiles	
1	A	160/160 (100%)	156 (98%)	4 (2%)	42	7
1	B	159/160 (99%)	154 (97%)	5 (3%)	35	4
All	All	319/320 (100%)	310 (97%)	9 (3%)	38	4

All (9) residues with a non-rotameric sidechain are listed below:

Mol	Chain	Res	Type
1	A	2	LYS
1	A	11	LYS
1	A	46	GLN
1	A	158	ASN
1	B	2	LYS
1	B	14	SER
1	B	29	ASN
1	B	62	GLN
1	B	180	THR

Sometimes sidechains can be flipped to improve hydrogen bonding and reduce clashes. All (5) such sidechains are listed below:

Mol	Chain	Res	Type
1	A	46	GLN
1	A	92	HIS
1	B	29	ASN
1	B	92	HIS
1	B	141	ASN

5.3.3 RNA [i](#)

There are no RNA molecules in this entry.

5.4 Non-standard residues in protein, DNA, RNA chains [i](#)

There are no non-standard protein/DNA/RNA residues in this entry.

5.5 Carbohydrates [i](#)

There are no oligosaccharides in this entry.

5.6 Ligand geometry [i](#)

6 ligands are modelled in this entry.

In the following table, the Counts columns list the number of bonds (or angles) for which Mogul statistics could be retrieved, the number of bonds (or angles) that are observed in the model and the number of bonds (or angles) that are defined in the Chemical Component Dictionary. The Link column lists molecule types, if any, to which the group is linked. The Z score for a bond length (or angle) is the number of standard deviations the observed value is removed from the expected value. A bond length (or angle) with $|Z| > 2$ is considered an outlier worth inspection. RMSZ is the root-mean-square of all Z scores of the bond lengths (or angles).

Mol	Type	Chain	Res	Link	Bond lengths			Bond angles		
					Counts	RMSZ	$\# Z > 2$	Counts	RMSZ	$\# Z > 2$
2	SO4	A	1002	-	4,4,4	0.53	0	6,6,6	0.88	0
3	MPD	A	1006	-	7,7,7	0.74	0	9,10,10	0.72	0
3	MPD	B	1004	-	7,7,7	0.84	0	9,10,10	1.66	3 (33%)
3	MPD	B	1003	-	7,7,7	0.61	0	9,10,10	0.84	0
2	SO4	B	1001	-	4,4,4	0.62	0	6,6,6	0.55	0
3	MPD	A	1005	-	7,7,7	0.58	0	9,10,10	1.19	0

In the following table, the Chirals column lists the number of chiral outliers, the number of chiral centers analysed, the number of these observed in the model and the number defined in the Chemical Component Dictionary. Similar counts are reported in the Torsion and Rings columns. '-' means no outliers of that kind were identified.

Mol	Type	Chain	Res	Link	Chirals	Torsions	Rings
3	MPD	B	1003	-	-	0/5/5/5	-
3	MPD	A	1005	-	-	0/5/5/5	-
3	MPD	B	1004	-	-	0/5/5/5	-
3	MPD	A	1006	-	-	0/5/5/5	-

There are no bond length outliers.

All (3) bond angle outliers are listed below:

Mol	Chain	Res	Type	Atoms	Z	Observed($^{\circ}$)	Ideal($^{\circ}$)
3	B	1004	MPD	CM-C2-C3	-2.88	97.76	110.20
3	B	1004	MPD	CM-C2-C1	-2.85	104.24	110.63
3	B	1004	MPD	C1-C2-C3	2.32	120.20	110.20

There are no chirality outliers.

There are no torsion outliers.

There are no ring outliers.

No monomer is involved in short contacts.

5.7 Other polymers [i](#)

There are no such residues in this entry.

5.8 Polymer linkage issues [i](#)

There are no chain breaks in this entry.

6 Fit of model and data

6.1 Protein, DNA and RNA chains

In the following table, the column labelled ‘#RSRZ > 2’ contains the number (and percentage) of RSRZ outliers, followed by percent RSRZ outliers for the chain as percentile scores relative to all X-ray entries and entries of similar resolution. The OWAB column contains the minimum, median, 95th percentile and maximum values of the occupancy-weighted average B-factor per residue. The column labelled ‘Q < 0.9’ lists the number of (and percentage) of residues with an average occupancy less than 0.9.

Mol	Chain	Analysed	<RSRZ>	#RSRZ>2	OWAB(Å ²)	Q<0.9
1	A	181/181 (100%)	0.47	8 (4%) 39 46	10, 17, 33, 59	0
1	B	180/181 (99%)	0.26	12 (6%) 25 32	8, 14, 32, 68	0
All	All	361/362 (99%)	0.37	20 (5%) 32 39	8, 15, 33, 68	0

All (20) RSRZ outliers are listed below:

Mol	Chain	Res	Type	RSRZ
1	A	15	VAL	6.7
1	A	101	PHE	5.3
1	B	101	PHE	5.2
1	A	18	ASN	4.0
1	B	2	LYS	3.9
1	B	15	VAL	3.6
1	A	14	SER	3.4
1	A	16	ASP	3.3
1	B	3	ILE	3.1
1	B	180	THR	2.9
1	A	144	ASP	2.7
1	B	60	GLY	2.5
1	B	141	ASN	2.5
1	B	61	LYS	2.5
1	B	179	LYS	2.4
1	A	19	LYS	2.4
1	B	166	LYS	2.3
1	A	56	TYR	2.3
1	B	172	SER	2.2
1	B	76	LEU	2.1

6.2 Non-standard residues in protein, DNA, RNA chains [i](#)

There are no non-standard protein/DNA/RNA residues in this entry.

6.3 Carbohydrates [i](#)

There are no monosaccharides in this entry.

6.4 Ligands [i](#)

In the following table, the Atoms column lists the number of modelled atoms in the group and the number defined in the chemical component dictionary. The B-factors column lists the minimum, median, 95th percentile and maximum values of B factors of atoms in the group. The column labelled 'Q< 0.9' lists the number of atoms with occupancy less than 0.9.

Mol	Type	Chain	Res	Atoms	RSCC	RSR	B-factors(\AA^2)	Q<0.9
2	SO4	B	1001	5/5	0.75	0.17	25,35,42,42	0
2	SO4	A	1002	5/5	0.76	0.16	55,76,80,85	0
3	MPD	B	1003	8/8	0.91	0.11	16,19,31,31	0
3	MPD	A	1006	8/8	0.92	0.12	16,28,34,37	0
3	MPD	A	1005	8/8	0.94	0.10	19,23,31,33	0
3	MPD	B	1004	8/8	0.94	0.11	13,19,26,26	0

6.5 Other polymers [i](#)

There are no such residues in this entry.