



# Full wwPDB X-ray Structure Validation Report ⓘ

Aug 27, 2023 – 06:48 PM EDT

PDB ID : 3I53  
Title : Crystal structure of an O-methyltransferase (NcsB1) from neocarzinostatin biosynthesis in complex with S-adenosyl-L-homocysteine (SAH)  
Authors : Cooke, H.A.; Bruner, S.D.  
Deposited on : 2009-07-03  
Resolution : 2.08 Å (reported)

This is a Full wwPDB X-ray Structure Validation Report for a publicly released PDB entry.

We welcome your comments at [validation@mail.wwpdb.org](mailto:validation@mail.wwpdb.org)

A user guide is available at

<https://www.wwpdb.org/validation/2017/XrayValidationReportHelp>

with specific help available everywhere you see the ⓘ symbol.

The types of validation reports are described at

<http://www.wwpdb.org/validation/2017/FAQs#types>.

---

The following versions of software and data (see [references ⓘ](#)) were used in the production of this report:

MolProbity : 4.02b-467  
Mogul : 1.8.5 (274361), CSD as541be (2020)  
Xtriage (Phenix) : 1.13  
EDS : 2.35  
buster-report : 1.1.7 (2018)  
Percentile statistics : 20191225.v01 (using entries in the PDB archive December 25th 2019)  
Refmac : 5.8.0158  
CCP4 : 7.0.044 (Gargrove)  
Ideal geometry (proteins) : Engh & Huber (2001)  
Ideal geometry (DNA, RNA) : Parkinson et al. (1996)  
Validation Pipeline (wwPDB-VP) : 2.35

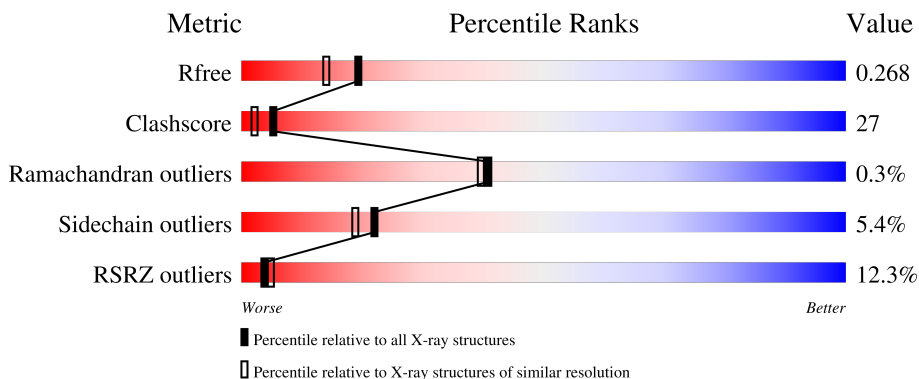
# 1 Overall quality at a glance

The following experimental techniques were used to determine the structure:

*X-RAY DIFFRACTION*

The reported resolution of this entry is 2.08 Å.

Percentile scores (ranging between 0-100) for global validation metrics of the entry are shown in the following graphic. The table shows the number of entries on which the scores are based.



Metric	Whole archive (#Entries)	Similar resolution (#Entries, resolution range(Å))
$R_{free}$	130704	6189 (2.10-2.06)
Clashscore	141614	6738 (2.10-2.06)
Ramachandran outliers	138981	6663 (2.10-2.06)
Sidechain outliers	138945	6664 (2.10-2.06)
RSRZ outliers	127900	6057 (2.10-2.06)

The table below summarises the geometric issues observed across the polymeric chains and their fit to the electron density. The red, orange, yellow and green segments of the lower bar indicate the fraction of residues that contain outliers for  $\geq 3$ , 2, 1 and 0 types of geometric quality criteria respectively. A grey segment represents the fraction of residues that are not modelled. The numeric value for each fraction is indicated below the corresponding segment, with a dot representing fractions  $\leq 5\%$ . The upper red bar (where present) indicates the fraction of residues that have poor fit to the electron density. The numeric value is given above the bar.

Mol	Chain	Length	Quality of chain
1	A	332	
1	B	332	

## 2 Entry composition [i](#)

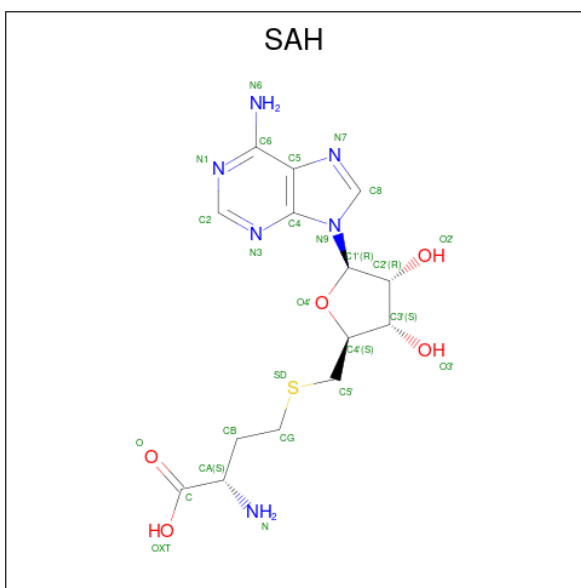
There are 4 unique types of molecules in this entry. The entry contains 4935 atoms, of which 0 are hydrogens and 0 are deuteriums.

In the tables below, the ZeroOcc column contains the number of atoms modelled with zero occupancy, the AltConf column contains the number of residues with at least one atom in alternate conformation and the Trace column contains the number of residues modelled with at most 2 atoms.

- Molecule 1 is a protein called O-methyltransferase.

Mol	Chain	Residues	Atoms					ZeroOcc	AltConf	Trace
			Total	C	N	O	S			
1	A	325	Total	C	N	O	S	0	0	0
			2379	1495	428	449	7			
1	B	303	Total	C	N	O	S	0	0	0
			2193	1378	396	412	7			

- Molecule 2 is S-ADENOSYL-L-HOMOCYSTEINE (three-letter code: SAH) (formula:  $C_{14}H_{20}N_6O_5S$ ).



Mol	Chain	Residues	Atoms					ZeroOcc	AltConf
			Total	C	N	O	S		
2	A	1	Total	C	N	O	S	0	0
			26	14	6	5	1		
2	B	1	Total	C	N	O	S	0	0
			26	14	6	5	1		

- Molecule 3 is GLYCEROL (three-letter code: GOL) (formula:  $C_3H_8O_3$ ).



Mol	Chain	Residues	Atoms	ZeroOcc	AltConf
3	B	1	Total C O 6 3 3	0	0

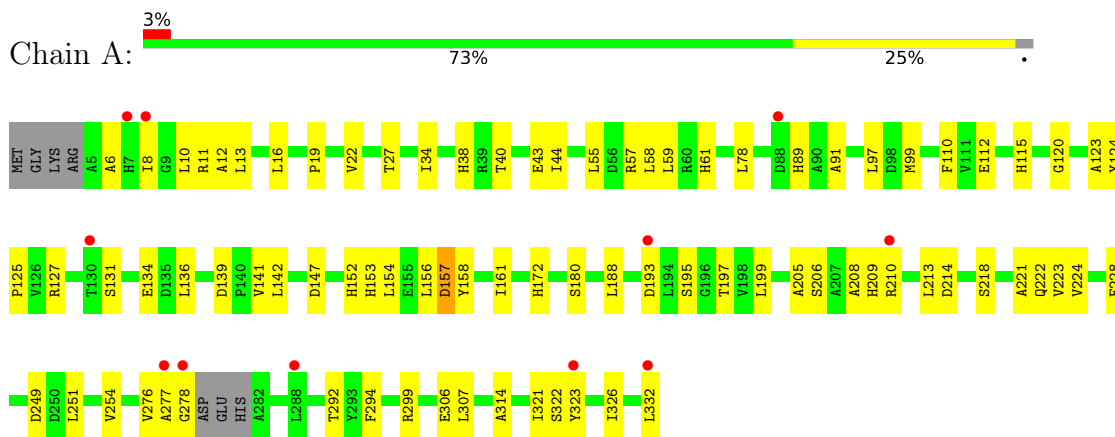
- Molecule 4 is water.

Mol	Chain	Residues	Atoms	ZeroOcc	AltConf
4	A	188	Total O 188 188	0	0
4	B	117	Total O 117 117	0	0

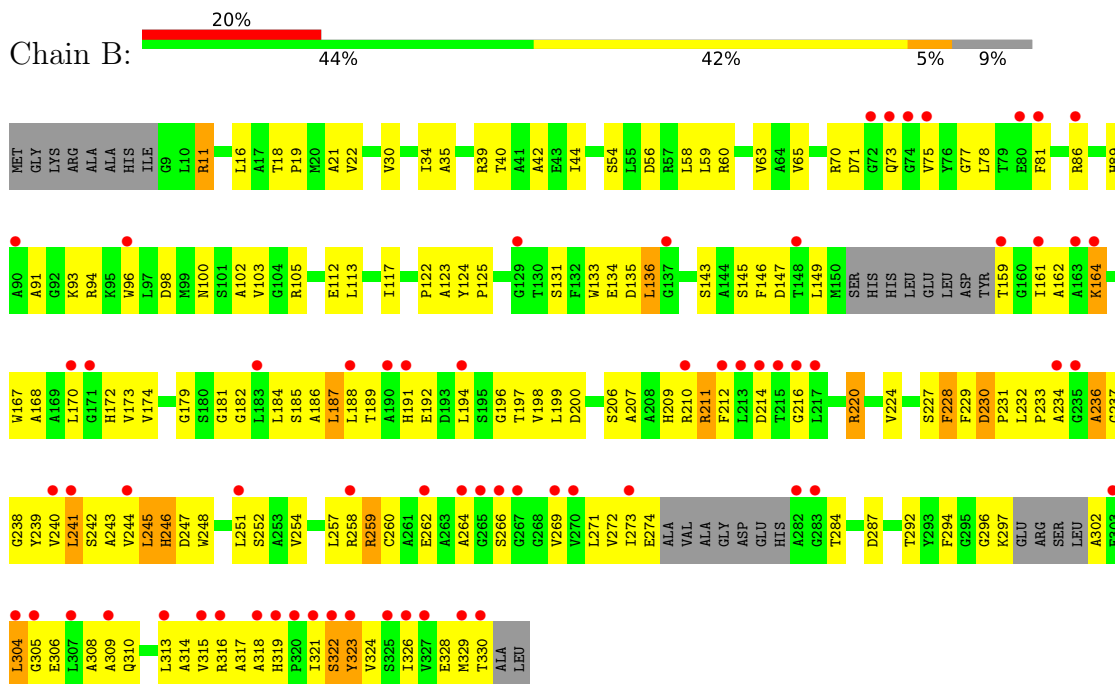
### 3 Residue-property plots i

These plots are drawn for all protein, RNA, DNA and oligosaccharide chains in the entry. The first graphic for a chain summarises the proportions of the various outlier classes displayed in the second graphic. The second graphic shows the sequence view annotated by issues in geometry and electron density. Residues are color-coded according to the number of geometric quality criteria for which they contain at least one outlier: green = 0, yellow = 1, orange = 2 and red = 3 or more. A red dot above a residue indicates a poor fit to the electron density ( $RSRZ > 2$ ). Stretches of 2 or more consecutive residues without any outlier are shown as a green connector. Residues present in the sample, but not in the model, are shown in grey.

#### • Molecule 1: O-methyltransferase



#### • Molecule 1: O-methyltransferase



## 4 Data and refinement statistics i

Property	Value	Source
Space group	C 2 2 21	Depositor
Cell constants a, b, c, $\alpha$ , $\beta$ , $\gamma$	91.25Å 161.57Å 98.94Å 90.00° 90.00° 90.00°	Depositor
Resolution (Å)	25.00 – 2.08 31.29 – 2.08	Depositor EDS
% Data completeness (in resolution range)	(Not available) (25.00-2.08) 93.6 (31.29-2.08)	Depositor EDS
$R_{merge}$	0.05	Depositor
$R_{sym}$	(Not available)	Depositor
$\langle I/\sigma(I) \rangle$ <sup>1</sup>	4.84 (at 2.08Å)	Xtrriage
Refinement program	CNS 1.1	Depositor
R, $R_{free}$	0.240 , 0.272 0.235 , 0.268	Depositor DCC
$R_{free}$ test set	2201 reflections (5.00%)	wwPDB-VP
Wilson B-factor (Å <sup>2</sup> )	32.5	Xtrriage
Anisotropy	0.825	Xtrriage
Bulk solvent $k_{sol}$ (e/Å <sup>3</sup> ), $B_{sol}$ (Å <sup>2</sup> )	0.38 , 59.5	EDS
L-test for twinning <sup>2</sup>	$\langle  L  \rangle = 0.49$ , $\langle L^2 \rangle = 0.32$	Xtrriage
Estimated twinning fraction	0.016 for 1/2*h-1/2*k,-3/2*h-1/2*k,-l 0.027 for 1/2*h+1/2*k,3/2*h-1/2*k,-l	Xtrriage
$F_o, F_c$ correlation	0.94	EDS
Total number of atoms	4935	wwPDB-VP
Average B, all atoms (Å <sup>2</sup> )	46.0	wwPDB-VP

Xtrriage's analysis on translational NCS is as follows: *The largest off-origin peak in the Patterson function is 4.47% of the height of the origin peak. No significant pseudotranslation is detected.*

<sup>1</sup>Intensities estimated from amplitudes.

<sup>2</sup>Theoretical values of  $\langle |L| \rangle$ ,  $\langle L^2 \rangle$  for acentric reflections are 0.5, 0.333 respectively for untwinned datasets, and 0.375, 0.2 for perfectly twinned datasets.

## 5 Model quality [i](#)

### 5.1 Standard geometry [i](#)

Bond lengths and bond angles in the following residue types are not validated in this section: GOL, SAH

The Z score for a bond length (or angle) is the number of standard deviations the observed value is removed from the expected value. A bond length (or angle) with  $|Z| > 5$  is considered an outlier worth inspection. RMSZ is the root-mean-square of all Z scores of the bond lengths (or angles).

Mol	Chain	Bond lengths		Bond angles	
		RMSZ	# Z  >5	RMSZ	# Z  >5
1	A	0.36	0/2424	0.60	0/3291
1	B	0.33	0/2232	0.62	2/3029 (0.1%)
All	All	0.34	0/4656	0.61	2/6320 (0.0%)

There are no bond length outliers.

All (2) bond angle outliers are listed below:

Mol	Chain	Res	Type	Atoms	Z	Observed(°)	Ideal(°)
1	B	236	ALA	CB-CA-C	-5.92	101.21	110.10
1	B	266	SER	CB-CA-C	-5.44	99.77	110.10

There are no chirality outliers.

There are no planarity outliers.

### 5.2 Too-close contacts [i](#)

In the following table, the Non-H and H(model) columns list the number of non-hydrogen atoms and hydrogen atoms in the chain respectively. The H(added) column lists the number of hydrogen atoms added and optimized by MolProbity. The Clashes column lists the number of clashes within the asymmetric unit, whereas Symm-Clashes lists symmetry-related clashes.

Mol	Chain	Non-H	H(model)	H(added)	Clashes	Symm-Clashes
1	A	2379	0	2344	70	0
1	B	2193	0	2149	180	0
2	A	26	0	19	0	0
2	B	26	0	19	4	0
3	B	6	0	8	0	0
4	A	188	0	0	7	0
4	B	117	0	0	6	0

*Continued on next page...*

*Continued from previous page...*

Mol	Chain	Non-H	H(model)	H(added)	Clashes	Symm-Clashes
All	All	4935	0	4539	244	0

The all-atom clashscore is defined as the number of clashes found per 1000 atoms (including hydrogen atoms). The all-atom clashscore for this structure is 27.

All (244) close contacts within the same asymmetric unit are listed below, sorted by their clash magnitude.

Atom-1	Atom-2	Interatomic distance (Å)	Clash overlap (Å)
1:A:34:ILE:HD11	1:A:78:LEU:HG	1.30	1.13
1:B:164:LYS:HG2	1:B:321:ILE:HG22	1.24	1.13
1:B:164:LYS:HG2	1:B:321:ILE:CG2	1.87	1.05
1:B:316:ARG:HG3	1:B:330:THR:HG22	1.41	1.01
1:B:241:LEU:HD13	1:B:245:LEU:HD11	1.44	0.99
1:B:131:SER:OG	1:B:134:GLU:HG2	1.66	0.95
1:B:322:SER:OG	1:B:323:TYR:N	1.99	0.94
1:B:241:LEU:HD11	1:B:272:VAL:HG22	1.51	0.93
1:B:304:LEU:H	1:B:304:LEU:HD12	1.34	0.92
1:B:245:LEU:HD22	1:B:245:LEU:H	1.32	0.92
1:B:162:ALA:HA	1:B:167:TRP:HE1	1.38	0.89
1:A:11:ARG:HG2	1:A:11:ARG:HH11	1.38	0.88
1:B:257:LEU:HD13	1:B:308:ALA:HB1	1.57	0.86
1:A:161:ILE:HD11	1:A:326:ILE:HD11	1.59	0.85
1:B:254:VAL:HA	1:B:257:LEU:HD12	1.59	0.82
1:A:197:THR:HG22	1:A:222:GLN:HG2	1.64	0.80
1:A:34:ILE:HD11	1:A:78:LEU:CG	2.10	0.80
1:A:40:THR:HG23	1:A:43:GLU:H	1.46	0.80
1:B:245:LEU:HD22	1:B:245:LEU:N	1.96	0.80
1:B:246:HIS:HA	1:B:297:LYS:HE2	1.64	0.80
1:B:182:GLY:H	1:B:211:ARG:NH2	1.79	0.79
1:B:309:ALA:HA	1:B:313:LEU:O	1.85	0.75
1:B:241:LEU:HD12	1:B:241:LEU:O	1.87	0.74
1:B:168:ALA:HA	1:B:194:LEU:HD21	1.70	0.74
1:B:309:ALA:HB2	1:B:315:VAL:HG23	1.69	0.74
1:A:34:ILE:HA	1:A:38:HIS:O	1.86	0.74
1:B:322:SER:OG	1:B:323:TYR:CD2	2.40	0.73
1:B:305:GLY:O	1:B:308:ALA:HB3	1.90	0.72
1:B:316:ARG:CG	1:B:330:THR:HG22	2.19	0.71
1:B:162:ALA:HA	1:B:167:TRP:NE1	2.06	0.70
1:B:174:VAL:HG23	1:B:236:ALA:HB2	1.74	0.70
1:B:241:LEU:CD1	1:B:245:LEU:HD11	2.20	0.70
1:B:245:LEU:H	1:B:245:LEU:CD2	2.02	0.69

*Continued on next page...*



*Continued from previous page...*

Atom-1	Atom-2	Interatomic distance (Å)	Clash overlap (Å)
1:B:304:LEU:HD12	1:B:304:LEU:N	2.08	0.69
1:B:321:ILE:HG12	1:B:324:VAL:O	1.93	0.69
1:B:11:ARG:HG3	1:B:11:ARG:HH11	1.57	0.69
1:B:39:ARG:NH1	1:B:77:GLY:HA2	2.09	0.68
1:B:273:ILE:HD12	1:B:273:ILE:N	2.09	0.68
1:B:182:GLY:HA3	4:B:575:HOH:O	1.93	0.68
1:B:96:TRP:HA	1:B:103:VAL:CG2	2.25	0.67
1:B:321:ILE:HG13	1:B:321:ILE:O	1.93	0.67
1:B:184:LEU:HD11	1:B:196:GLY:HA3	1.78	0.66
1:A:206:SER:O	1:A:210:ARG:HG3	1.96	0.65
1:A:147:ASP:HB2	4:A:773:HOH:O	1.97	0.64
1:B:96:TRP:CD1	1:B:149:LEU:HD11	2.32	0.64
1:B:321:ILE:CG1	1:B:324:VAL:O	2.46	0.64
1:B:60:ARG:HH21	1:B:70:ARG:NH2	1.95	0.64
1:B:185:SER:O	1:B:189:THR:HG23	1.98	0.64
1:B:123:ALA:HB3	1:B:292:THR:HG23	1.79	0.64
1:B:248:TRP:HB3	1:B:252:SER:HB2	1.80	0.63
1:B:248:TRP:HB3	1:B:252:SER:CB	2.27	0.63
1:A:172:HIS:NE2	1:A:197:THR:HG23	2.12	0.63
1:B:102:ALA:CB	1:B:146:PHE:HB2	2.28	0.63
1:B:304:LEU:H	1:B:304:LEU:CD1	2.10	0.63
1:B:234:ALA:HA	1:B:239:TYR:OH	1.99	0.62
1:B:245:LEU:HD23	1:B:274:GLU:OE2	1.98	0.62
1:A:154:LEU:O	1:A:158:TYR:HB2	1.99	0.62
1:A:314:ALA:HB2	1:A:332:LEU:HD13	1.81	0.62
1:B:230:ASP:HB2	1:B:231:PRO:HD2	1.82	0.62
1:A:61:HIS:ND1	1:B:284:THR:HG23	2.15	0.61
1:B:18:THR:O	1:B:22:VAL:HG23	2.00	0.61
1:B:136:LEU:HD13	1:B:143:SER:HA	1.83	0.61
1:B:329:MET:O	1:B:330:THR:HB	1.99	0.61
1:B:316:ARG:HG3	1:B:330:THR:CG2	2.24	0.61
1:B:246:HIS:HD2	1:B:247:ASP:H	1.46	0.61
1:A:6:ALA:HB3	4:A:776:HOH:O	2.00	0.61
1:B:172:HIS:CE1	1:B:197:THR:HG23	2.36	0.60
1:A:40:THR:HG22	1:A:43:GLU:CG	2.32	0.60
1:B:174:VAL:HG23	1:B:236:ALA:CB	2.32	0.60
1:A:136:LEU:HD22	1:A:142:LEU:HB3	1.83	0.60
1:B:315:VAL:O	1:B:316:ARG:HD3	2.03	0.59
1:A:34:ILE:CD1	1:A:78:LEU:HG	2.20	0.59
1:B:242:SER:O	1:B:244:VAL:HG23	2.03	0.59
1:B:164:LYS:HB2	1:B:164:LYS:NZ	2.18	0.59

*Continued on next page...*

*Continued from previous page...*

Atom-1	Atom-2	Interatomic distance (Å)	Clash overlap (Å)
1:B:39:ARG:HH12	1:B:77:GLY:HA2	1.67	0.59
1:A:40:THR:CG2	1:A:43:GLU:H	2.16	0.58
1:A:306:GLU:HB2	4:A:678:HOH:O	2.02	0.58
1:B:240:VAL:HG13	1:B:273:ILE:HD13	1.84	0.58
1:B:317:ALA:HB3	1:B:328:GLU:HG2	1.86	0.58
1:B:34:ILE:HG21	1:B:78:LEU:HD13	1.85	0.57
1:B:71:ASP:OD1	1:B:73:GLN:HB3	2.05	0.57
1:B:71:ASP:OD2	1:B:75:VAL:HB	2.05	0.57
1:B:241:LEU:HD12	1:B:272:VAL:HA	1.86	0.57
1:B:230:ASP:HB2	1:B:231:PRO:CD	2.35	0.56
1:B:269:VAL:HG12	1:B:330:THR:HB	1.86	0.56
1:B:161:ILE:HG13	1:B:326:ILE:HD11	1.88	0.56
1:B:164:LYS:CG	1:B:321:ILE:HG22	2.17	0.56
1:A:11:ARG:HG2	1:A:11:ARG:NH1	2.15	0.56
1:B:210:ARG:HG3	1:B:211:ARG:N	2.21	0.55
1:B:60:ARG:HH21	1:B:70:ARG:CZ	2.19	0.55
1:B:257:LEU:HD13	1:B:308:ALA:CB	2.33	0.55
1:B:309:ALA:HB1	1:B:314:ALA:HA	1.88	0.55
1:B:269:VAL:O	1:B:271:LEU:HD22	2.06	0.55
1:B:56:ASP:O	1:B:60:ARG:HG3	2.07	0.55
1:B:182:GLY:H	1:B:211:ARG:CZ	2.19	0.55
1:B:251:LEU:O	1:B:254:VAL:HG22	2.07	0.55
1:A:251:LEU:O	1:A:254:VAL:HG22	2.07	0.55
1:B:242:SER:O	2:B:401:SAH:HA	2.07	0.54
1:A:40:THR:HG22	1:A:43:GLU:CD	2.28	0.54
1:B:172:HIS:NE2	1:B:197:THR:HG23	2.22	0.54
1:B:91:ALA:HB1	1:B:93:LYS:HE3	1.91	0.53
1:A:205:ALA:HB1	1:A:223:VAL:CG1	2.39	0.53
1:B:251:LEU:C	1:B:251:LEU:HD23	2.29	0.53
1:B:131:SER:HG	1:B:134:GLU:HG2	1.73	0.52
1:B:136:LEU:CD1	1:B:143:SER:HA	2.37	0.52
1:B:199:LEU:HD23	1:B:224:VAL:HG23	1.92	0.52
1:B:304:LEU:HD23	4:B:748:HOH:O	2.09	0.52
1:B:241:LEU:O	1:B:241:LEU:CD1	2.57	0.52
1:B:96:TRP:NE1	1:B:149:LEU:HD11	2.24	0.52
1:A:89:HIS:HD2	1:A:91:ALA:HB3	1.75	0.52
1:A:152:HIS:O	1:A:156:LEU:HG	2.10	0.52
1:B:122:PRO:HG3	1:B:294:PHE:O	2.10	0.52
1:B:322:SER:OG	1:B:323:TYR:CG	2.64	0.51
1:B:302:ALA:C	1:B:304:LEU:N	2.63	0.51
1:B:192:GLU:HA	1:B:220:ARG:NH2	2.26	0.51

*Continued on next page...*

*Continued from previous page...*

Atom-1	Atom-2	Interatomic distance (Å)	Clash overlap (Å)
1:B:21:ALA:HA	1:B:58:LEU:HD11	1.94	0.50
1:A:199:LEU:HD22	1:A:224:VAL:O	2.12	0.50
1:A:115:HIS:HD2	4:A:741:HOH:O	1.94	0.50
1:B:168:ALA:HA	1:B:194:LEU:CD2	2.40	0.50
1:A:89:HIS:CD2	1:A:91:ALA:H	2.29	0.49
1:A:205:ALA:HB1	1:A:223:VAL:HG11	1.94	0.49
1:B:162:ALA:HB2	1:B:187:LEU:HD12	1.94	0.49
1:A:10:LEU:HD23	1:B:93:LYS:CB	2.42	0.49
1:B:271:LEU:HD22	1:B:271:LEU:N	2.28	0.49
1:B:105:ARG:HH12	1:B:135:ASP:CG	2.15	0.49
1:B:168:ALA:CA	1:B:194:LEU:HD21	2.41	0.49
1:B:145:SER:O	1:B:149:LEU:HB2	2.13	0.48
1:A:299:ARG:NE	1:A:307:LEU:HD11	2.28	0.48
1:B:16:LEU:C	1:B:19:PRO:HD2	2.34	0.48
1:B:162:ALA:C	1:B:164:LYS:H	2.16	0.48
1:A:8:ILE:HG22	1:A:12:ALA:HB3	1.94	0.48
1:A:222:GLN:HA	4:A:534:HOH:O	2.13	0.48
1:B:191:HIS:O	1:B:220:ARG:NH2	2.47	0.48
1:A:199:LEU:C	1:A:199:LEU:HD13	2.34	0.48
1:B:35:ALA:HB2	1:B:86:ARG:HE	1.78	0.48
1:B:30:VAL:HG11	1:B:59:LEU:HD21	1.96	0.47
1:A:34:ILE:HG22	1:A:44:ILE:HD11	1.96	0.47
1:B:96:TRP:HA	1:B:103:VAL:HG21	1.96	0.47
1:B:302:ALA:C	1:B:304:LEU:H	2.17	0.47
2:B:401:SAH:HB1	2:B:401:SAH:H4'	1.97	0.47
1:B:191:HIS:HB2	1:B:194:LEU:HD12	1.95	0.47
1:B:321:ILE:HG13	1:B:324:VAL:O	2.15	0.47
1:A:124:TYR:HB3	1:A:125:PRO:HD3	1.96	0.47
1:B:258:ARG:HG2	1:B:262:GLU:OE1	2.15	0.47
1:B:220:ARG:HD3	4:B:529:HOH:O	2.15	0.47
1:A:276:VAL:O	1:A:278:GLY:N	2.48	0.46
1:B:245:LEU:HG	1:B:272:VAL:HG13	1.96	0.46
1:B:102:ALA:HB1	1:B:146:PHE:HB2	1.97	0.46
1:A:13:LEU:HD21	1:B:65:VAL:CG1	2.44	0.46
1:B:59:LEU:O	1:B:63:VAL:HG23	2.15	0.46
1:B:73:GLN:HA	4:B:602:HOH:O	2.15	0.46
1:A:89:HIS:CD2	1:A:91:ALA:HB3	2.50	0.46
1:A:323:TYR:N	1:A:323:TYR:CD2	2.84	0.46
1:B:11:ARG:HH11	1:B:11:ARG:CG	2.24	0.46
1:A:110:PHE:CD2	1:A:292:THR:HG21	2.51	0.45
1:B:244:VAL:O	1:B:248:TRP:HD1	1.99	0.45

*Continued on next page...*

*Continued from previous page...*

Atom-1	Atom-2	Interatomic distance (Å)	Clash overlap (Å)
1:B:167:TRP:HZ3	1:B:240:VAL:HG21	1.82	0.45
1:B:246:HIS:O	1:B:296:GLY:HA3	2.15	0.45
1:B:246:HIS:HD2	1:B:247:ASP:N	2.14	0.45
1:B:241:LEU:CD1	1:B:272:VAL:HA	2.47	0.45
1:B:309:ALA:CB	1:B:314:ALA:HA	2.46	0.45
1:B:246:HIS:CD2	1:B:247:ASP:H	2.31	0.45
1:B:181:GLY:HA3	1:B:211:ARG:NE	2.31	0.45
1:B:317:ALA:HB3	1:B:328:GLU:CG	2.47	0.45
1:B:260:CYS:O	1:B:264:ALA:N	2.50	0.44
1:A:58:LEU:C	1:A:58:LEU:HD23	2.37	0.44
1:B:246:HIS:CA	1:B:297:LYS:HE2	2.41	0.44
1:B:297:LYS:HD2	4:B:748:HOH:O	2.16	0.44
1:B:167:TRP:CZ3	1:B:240:VAL:HG21	2.52	0.44
1:A:16:LEU:C	1:A:19:PRO:HD2	2.37	0.44
1:A:27:THR:HG21	1:A:99:MET:HE2	2.00	0.44
1:A:161:ILE:HD13	1:A:321:ILE:HD12	1.99	0.44
1:A:120:GLY:HA2	1:B:54:SER:OG	2.18	0.44
1:B:273:ILE:N	1:B:273:ILE:CD1	2.78	0.44
1:B:318:ALA:O	1:B:319:HIS:ND1	2.47	0.44
1:B:98:ASP:OD2	1:B:100:ASN:HB2	2.18	0.44
1:B:168:ALA:N	1:B:194:LEU:HD11	2.33	0.44
1:A:34:ILE:HD11	1:A:78:LEU:CD2	2.48	0.44
1:B:179:GLY:N	1:B:200:ASP:OD2	2.48	0.44
1:B:186:ALA:HA	1:B:189:THR:OG1	2.18	0.44
1:B:244:VAL:H	1:B:245:LEU:HD22	1.82	0.44
1:A:34:ILE:HG22	1:A:44:ILE:CD1	2.48	0.43
1:B:206:SER:O	1:B:209:HIS:HB3	2.18	0.43
1:A:161:ILE:CD1	1:A:326:ILE:HD11	2.40	0.43
1:A:136:LEU:CD2	1:A:142:LEU:HB3	2.48	0.43
1:B:232:LEU:HG	1:B:233:PRO:HD2	2.00	0.43
1:B:251:LEU:C	1:B:251:LEU:CD2	2.86	0.43
1:B:246:HIS:CB	1:B:297:LYS:HG2	2.49	0.43
1:B:184:LEU:HD23	1:B:198:VAL:HG23	2.01	0.43
1:B:188:LEU:HD22	1:B:194:LEU:O	2.18	0.43
1:A:172:HIS:CE1	1:A:197:THR:HG23	2.52	0.43
1:A:222:GLN:HB2	4:A:725:HOH:O	2.18	0.43
1:B:243:ALA:HB3	2:B:401:SAH:HG1	2.00	0.43
1:B:243:ALA:HB3	2:B:401:SAH:N	2.33	0.43
1:B:269:VAL:O	1:B:269:VAL:HG23	2.19	0.43
1:B:89:HIS:HD2	1:B:91:ALA:HB3	1.83	0.43
1:B:112:GLU:HB2	1:B:123:ALA:HB1	2.01	0.43

*Continued on next page...*

*Continued from previous page...*

Atom-1	Atom-2	Interatomic distance (Å)	Clash overlap (Å)
1:B:246:HIS:CD2	1:B:247:ASP:N	2.87	0.43
1:A:57:ARG:HD2	1:B:287:ASP:OD2	2.19	0.42
1:B:228:PHE:HE2	1:B:229:PHE:CE2	2.37	0.42
1:B:259:ARG:HG3	1:B:259:ARG:HH11	1.84	0.42
1:A:188:LEU:CD2	1:A:221:ALA:HB2	2.49	0.42
1:B:207:ALA:O	1:B:210:ARG:HG2	2.20	0.42
1:A:131:SER:OG	1:A:134:GLU:HG2	2.19	0.42
1:A:11:ARG:NH1	1:B:96:TRP:CD2	2.88	0.42
1:A:139:ASP:OD1	1:A:141:VAL:N	2.51	0.42
1:B:259:ARG:HG3	1:B:259:ARG:NH1	2.34	0.42
1:B:241:LEU:HD13	1:B:245:LEU:CD1	2.32	0.42
1:A:209:HIS:CE1	1:A:213:LEU:HD11	2.55	0.42
1:B:316:ARG:HE	1:B:330:THR:CG2	2.33	0.42
1:B:113:LEU:O	1:B:117:ILE:HG12	2.20	0.41
1:B:214:ASP:C	1:B:216:GLY:H	2.22	0.41
1:B:133:TRP:HA	1:B:133:TRP:CE3	2.55	0.41
1:B:105:ARG:NH1	1:B:124:TYR:OH	2.54	0.41
1:B:187:LEU:HD12	1:B:187:LEU:HA	1.87	0.41
1:B:170:LEU:HD22	1:B:237:GLY:O	2.20	0.41
1:A:6:ALA:HB1	1:B:81:PHE:CE2	2.56	0.41
1:B:40:THR:HG22	1:B:42:ALA:N	2.35	0.41
1:B:306:GLU:O	1:B:310:GLN:N	2.50	0.41
1:A:157:ASP:C	1:A:158:TYR:HD1	2.24	0.41
1:A:276:VAL:C	1:A:278:GLY:N	2.73	0.41
1:A:11:ARG:NH1	1:A:11:ARG:CG	2.79	0.41
1:A:172:HIS:HA	1:A:195:SER:O	2.21	0.41
1:B:122:PRO:HG3	1:B:294:PHE:C	2.41	0.41
1:B:173:VAL:HG23	1:B:238:GLY:O	2.21	0.41
1:B:199:LEU:HD13	1:B:199:LEU:C	2.41	0.41
1:A:249:ASP:OD1	1:A:251:LEU:HB3	2.20	0.41
1:B:124:TYR:HB3	1:B:125:PRO:HD3	2.03	0.41
1:B:227:SER:O	1:B:230:ASP:OD1	2.39	0.41
1:B:251:LEU:O	1:B:252:SER:C	2.58	0.41
1:B:40:THR:O	1:B:44:ILE:HG13	2.21	0.41
1:B:159:THR:C	1:B:161:ILE:N	2.74	0.41
1:B:184:LEU:HD23	1:B:212:PHE:CZ	2.56	0.41
1:A:180:SER:O	1:A:208:ALA:HA	2.21	0.40
1:A:323:TYR:H	1:A:323:TYR:HD2	1.68	0.40
1:B:89:HIS:CD2	1:B:91:ALA:HB3	2.57	0.40
1:B:273:ILE:HG22	1:B:274:GLU:N	2.36	0.40
1:A:55:LEU:O	1:A:59:LEU:HG	2.20	0.40

*Continued on next page...*

Continued from previous page...

Atom-1	Atom-2	Interatomic distance (Å)	Clash overlap (Å)
1:A:22:VAL:HG12	1:A:97:LEU:HD23	2.03	0.40
1:A:127:ARG:HG3	4:A:523:HOH:O	2.21	0.40
1:A:112:GLU:HB2	1:A:123:ALA:HB1	2.03	0.40
1:B:236:ALA:HA	4:B:676:HOH:O	2.21	0.40
1:B:302:ALA:O	1:B:304:LEU:N	2.53	0.40
1:B:89:HIS:CD2	1:B:91:ALA:H	2.40	0.40

There are no symmetry-related clashes.

## 5.3 Torsion angles [i](#)

### 5.3.1 Protein backbone [i](#)

In the following table, the Percentiles column shows the percent Ramachandran outliers of the chain as a percentile score with respect to all X-ray entries followed by that with respect to entries of similar resolution.

The Analysed column shows the number of residues for which the backbone conformation was analysed, and the total number of residues.

Mol	Chain	Analysed	Favoured	Allowed	Outliers	Percentiles	
1	A	321/332 (97%)	313 (98%)	6 (2%)	2 (1%)	25	20
1	B	295/332 (89%)	262 (89%)	33 (11%)	0	100	100
All	All	616/664 (93%)	575 (93%)	39 (6%)	2 (0%)	41	39

All (2) Ramachandran outliers are listed below:

Mol	Chain	Res	Type
1	A	322	SER
1	A	277	ALA

### 5.3.2 Protein sidechains [i](#)

In the following table, the Percentiles column shows the percent sidechain outliers of the chain as a percentile score with respect to all X-ray entries followed by that with respect to entries of similar resolution.

The Analysed column shows the number of residues for which the sidechain conformation was analysed, and the total number of residues.

Mol	Chain	Analysed	Rotameric	Outliers	Percentiles
1	A	231/237 (98%)	224 (97%)	7 (3%)	41 43
1	B	210/237 (89%)	193 (92%)	17 (8%)	11 8
All	All	441/474 (93%)	417 (95%)	24 (5%)	22 19

All (24) residues with a non-rotameric sidechain are listed below:

Mol	Chain	Res	Type
1	A	153	HIS
1	A	157	ASP
1	A	193	ASP
1	A	214	ASP
1	A	218	SER
1	A	228	PHE
1	A	294	PHE
1	B	11	ARG
1	B	94	ARG
1	B	136	LEU
1	B	147	ASP
1	B	164	LYS
1	B	187	LEU
1	B	211	ARG
1	B	220	ARG
1	B	228	PHE
1	B	230	ASP
1	B	241	LEU
1	B	245	LEU
1	B	246	HIS
1	B	259	ARG
1	B	304	LEU
1	B	322	SER
1	B	323	TYR

Sometimes sidechains can be flipped to improve hydrogen bonding and reduce clashes. All (9) such sidechains are listed below:

Mol	Chain	Res	Type
1	A	51	HIS
1	A	89	HIS
1	A	209	HIS
1	B	51	HIS
1	B	73	GLN
1	B	89	HIS

*Continued on next page...*

*Continued from previous page...*

Mol	Chain	Res	Type
1	B	115	HIS
1	B	121	GLN
1	B	246	HIS

### 5.3.3 RNA [i](#)

There are no RNA molecules in this entry.

### 5.4 Non-standard residues in protein, DNA, RNA chains [i](#)

There are no non-standard protein/DNA/RNA residues in this entry.

### 5.5 Carbohydrates [i](#)

There are no monosaccharides in this entry.

### 5.6 Ligand geometry [i](#)

3 ligands are modelled in this entry.

In the following table, the Counts columns list the number of bonds (or angles) for which Mogul statistics could be retrieved, the number of bonds (or angles) that are observed in the model and the number of bonds (or angles) that are defined in the Chemical Component Dictionary. The Link column lists molecule types, if any, to which the group is linked. The Z score for a bond length (or angle) is the number of standard deviations the observed value is removed from the expected value. A bond length (or angle) with  $|Z| > 2$  is considered an outlier worth inspection. RMSZ is the root-mean-square of all Z scores of the bond lengths (or angles).

Mol	Type	Chain	Res	Link	Bond lengths			Bond angles		
					Counts	RMSZ	$\# Z  > 2$	Counts	RMSZ	$\# Z  > 2$
2	SAH	A	401	-	24,28,28	0.80	0	25,40,40	1.42	3 (12%)
2	SAH	B	401	-	24,28,28	0.82	0	25,40,40	1.46	3 (12%)
3	GOL	B	402	-	5,5,5	0.32	0	5,5,5	0.25	0

In the following table, the Chirals column lists the number of chiral outliers, the number of chiral centers analysed, the number of these observed in the model and the number defined in the Chemical Component Dictionary. Similar counts are reported in the Torsion and Rings columns. '-' means no outliers of that kind were identified.



Mol	Type	Chain	Res	Link	Chirals	Torsions	Rings
2	SAH	A	401	-	-	1/11/31/31	0/3/3/3
2	SAH	B	401	-	-	4/11/31/31	0/3/3/3
3	GOL	B	402	-	-	0/4/4/4	-

There are no bond length outliers.

All (6) bond angle outliers are listed below:

Mol	Chain	Res	Type	Atoms	Z	Observed( $^{\circ}$ )	Ideal( $^{\circ}$ )
2	A	401	SAH	N3-C2-N1	-4.57	121.54	128.68
2	B	401	SAH	N3-C2-N1	-4.48	121.67	128.68
2	B	401	SAH	O4'-C1'-C2'	-3.37	102.01	106.93
2	A	401	SAH	O4'-C1'-C2'	-3.33	102.06	106.93
2	B	401	SAH	C5'-C4'-C3'	-2.21	109.54	115.06
2	A	401	SAH	C4-C5-N7	-2.15	107.16	109.40

There are no chirality outliers.

All (5) torsion outliers are listed below:

Mol	Chain	Res	Type	Atoms
2	B	401	SAH	O-C-CA-N
2	B	401	SAH	OXT-C-CA-N
2	B	401	SAH	OXT-C-CA-CB
2	B	401	SAH	O-C-CA-CB
2	A	401	SAH	C4'-C5'-SD-CG

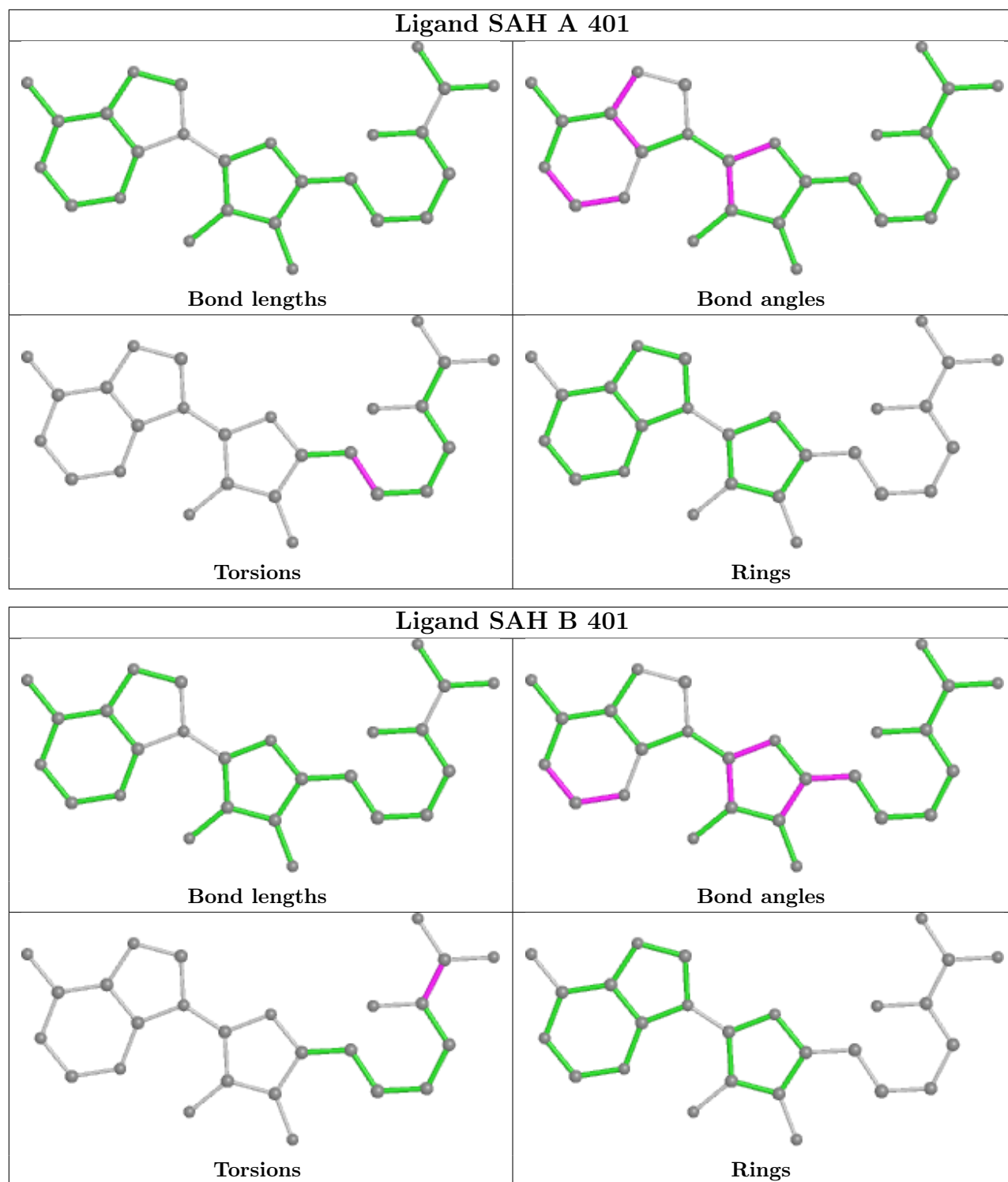
There are no ring outliers.

1 monomer is involved in 4 short contacts:

Mol	Chain	Res	Type	Clashes	Symm-Clashes
2	B	401	SAH	4	0

The following is a two-dimensional graphical depiction of Mogul quality analysis of bond lengths, bond angles, torsion angles, and ring geometry for all instances of the Ligand of Interest. In addition, ligands with molecular weight > 250 and outliers as shown on the validation Tables will also be included. For torsion angles, if less than 5% of the Mogul distribution of torsion angles is within 10 degrees of the torsion angle in question, then that torsion angle is considered an outlier. Any bond that is central to one or more torsion angles identified as an outlier by Mogul will be highlighted in the graph. For rings, the root-mean-square deviation (RMSD) between the ring in question and similar rings identified by Mogul is calculated over all ring torsion angles. If the average RMSD is greater than 60 degrees and the minimal RMSD between the ring in question and any Mogul-identified rings is also greater than 60 degrees, then that ring is considered an outlier. The outliers are highlighted in purple. The color gray indicates Mogul did not find sufficient

equivalents in the CSD to analyse the geometry.



## 5.7 Other polymers [\(i\)](#)

There are no such residues in this entry.

## 5.8 Polymer linkage issues

There are no chain breaks in this entry.

## 6 Fit of model and data

### 6.1 Protein, DNA and RNA chains

In the following table, the column labelled ‘#RSRZ > 2’ contains the number (and percentage) of RSRZ outliers, followed by percent RSRZ outliers for the chain as percentile scores relative to all X-ray entries and entries of similar resolution. The OWAB column contains the minimum, median, 95<sup>th</sup> percentile and maximum values of the occupancy-weighted average B-factor per residue. The column labelled ‘Q < 0.9’ lists the number of (and percentage) of residues with an average occupancy less than 0.9.

Mol	Chain	Analysed	<RSRZ>	#RSRZ>2	OWAB(Å <sup>2</sup> )	Q<0.9
1	A	325/332 (97%)	0.24	11 (3%) 45 50	25, 37, 53, 72	0
1	B	303/332 (91%)	1.12	66 (21%) 0 0	27, 53, 83, 89	0
All	All	628/664 (94%)	0.67	77 (12%) 4 5	25, 42, 75, 89	0

All (77) RSRZ outliers are listed below:

Mol	Chain	Res	Type	RSRZ
1	B	323	TYR	9.5
1	B	321	ILE	7.7
1	B	266	SER	7.6
1	B	322	SER	7.4
1	B	313	LEU	7.0
1	B	234	ALA	6.2
1	B	282	ALA	6.1
1	B	330	THR	5.4
1	B	73	GLN	5.3
1	B	161	ILE	4.3
1	B	190	ALA	4.0
1	A	210	ARG	3.9
1	A	323	TYR	3.8
1	B	315	VAL	3.8
1	B	318	ALA	3.8
1	B	216	GLY	3.7
1	B	148	THR	3.7
1	B	251	LEU	3.6
1	B	183	LEU	3.6
1	B	329	MET	3.5
1	B	265	GLY	3.4
1	B	316	ARG	3.3
1	B	96	TRP	3.2
1	B	327	VAL	3.2

*Continued on next page...*

*Continued from previous page...*

<b>Mol</b>	<b>Chain</b>	<b>Res</b>	<b>Type</b>	<b>RSRZ</b>
1	B	72	GLY	3.1
1	B	164	LYS	3.1
1	B	215	THR	3.0
1	B	309	ALA	3.0
1	B	320	PRO	3.0
1	A	7	HIS	3.0
1	B	267	GLY	2.9
1	B	269	VAL	2.9
1	B	212	PHE	2.9
1	B	217	LEU	2.9
1	B	86	ARG	2.9
1	A	332	LEU	2.8
1	B	188	LEU	2.8
1	B	258	ARG	2.8
1	B	194	LEU	2.8
1	B	270	VAL	2.7
1	A	277	ALA	2.7
1	B	264	ALA	2.7
1	A	8	ILE	2.7
1	A	278	GLY	2.7
1	B	305	GLY	2.7
1	B	262	GLU	2.6
1	B	171	GLY	2.6
1	B	326	ILE	2.6
1	B	241	LEU	2.5
1	B	244	VAL	2.5
1	B	75	VAL	2.4
1	A	193	ASP	2.4
1	B	240	VAL	2.4
1	B	283	GLY	2.4
1	B	81	PHE	2.4
1	B	170	LEU	2.4
1	B	129	GLY	2.4
1	B	191	HIS	2.3
1	B	273	ILE	2.3
1	B	90	ALA	2.3
1	B	163	ALA	2.2
1	B	304	LEU	2.2
1	B	319	HIS	2.2
1	B	303	GLU	2.2
1	B	74	GLY	2.2
1	B	325	SER	2.2

*Continued on next page...*

*Continued from previous page...*

Mol	Chain	Res	Type	RSRZ
1	B	307	LEU	2.2
1	B	159	THR	2.2
1	B	210	ARG	2.1
1	B	213	LEU	2.1
1	A	288	LEU	2.1
1	A	88	ASP	2.1
1	B	80	GLU	2.1
1	B	214	ASP	2.1
1	A	130	THR	2.0
1	B	137	GLY	2.0
1	B	235	GLY	2.0

## 6.2 Non-standard residues in protein, DNA, RNA chains [i](#)

There are no non-standard protein/DNA/RNA residues in this entry.

## 6.3 Carbohydrates [i](#)

There are no monosaccharides in this entry.

## 6.4 Ligands [i](#)

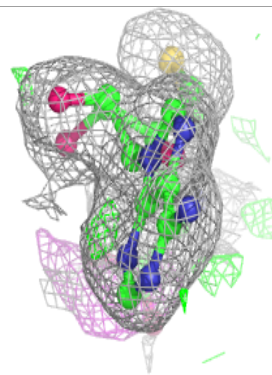
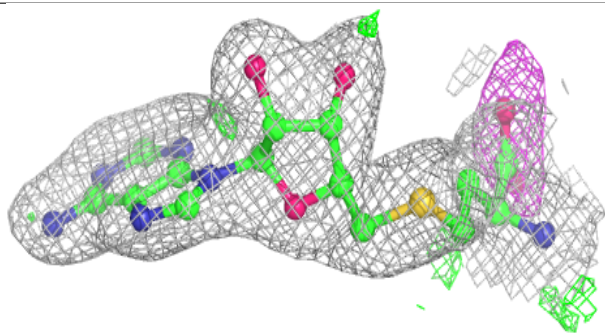
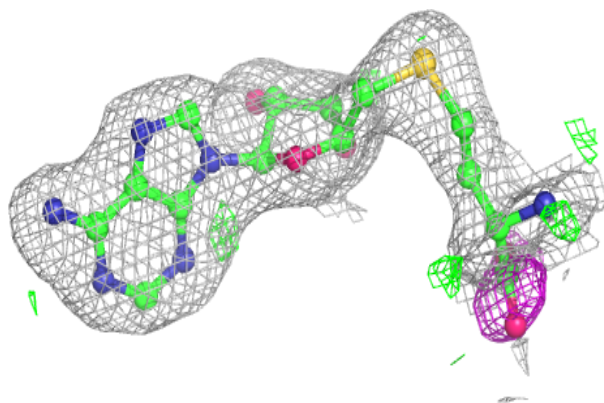
In the following table, the Atoms column lists the number of modelled atoms in the group and the number defined in the chemical component dictionary. The B-factors column lists the minimum, median, 95<sup>th</sup> percentile and maximum values of B factors of atoms in the group. The column labelled 'Q< 0.9' lists the number of atoms with occupancy less than 0.9.

Mol	Type	Chain	Res	Atoms	RSCC	RSR	B-factors(Å <sup>2</sup> )	Q<0.9
3	GOL	B	402	6/6	0.47	0.18	69,72,73,73	0
2	SAH	B	401	26/26	0.89	0.17	34,37,59,61	0
2	SAH	A	401	26/26	0.95	0.13	22,28,34,38	0

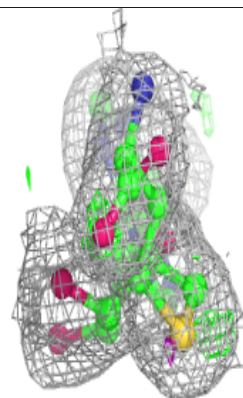
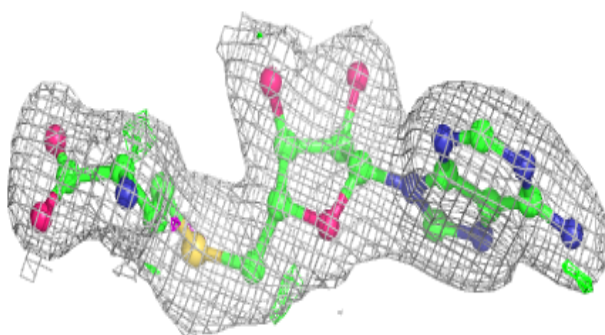
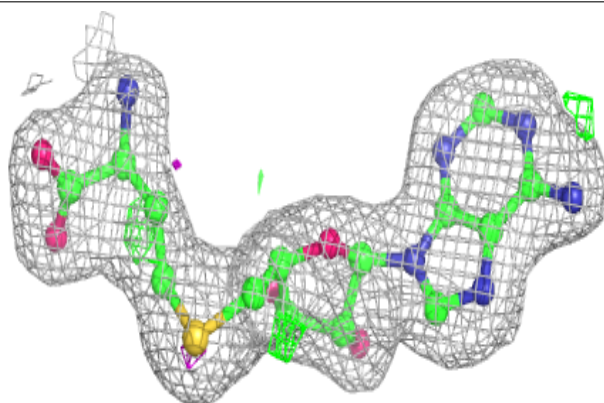
The following is a graphical depiction of the model fit to experimental electron density of all instances of the Ligand of Interest. In addition, ligands with molecular weight > 250 and outliers as shown on the geometry validation Tables will also be included. Each fit is shown from different orientation to approximate a three-dimensional view.

**Electron density around SAH B 401:**

$2mF_o-DF_c$  (at 0.7 rmsd) in gray  
 $mF_o-DF_c$  (at 3 rmsd) in purple (negative)  
and green (positive)

**Electron density around SAH A 401:**

$2mF_o-DF_c$  (at 0.7 rmsd) in gray  
 $mF_o-DF_c$  (at 3 rmsd) in purple (negative)  
and green (positive)



## 6.5 Other polymers [i](#)

There are no such residues in this entry.