



# Full wwPDB X-ray Structure Validation Report ⓘ

May 24, 2020 – 03:05 pm BST

PDB ID : 3I65  
Title : Plasmodium falciparum dihydroorotate dehydrogenase bound with triazolopyrimidine-based inhibitor DSM1  
Authors : Deng, X.; Phillips, M.A.  
Deposited on : 2009-07-06  
Resolution : 2.00 Å(reported)

This is a Full wwPDB X-ray Structure Validation Report for a publicly released PDB entry.

We welcome your comments at [validation@mail.wwpdb.org](mailto:validation@mail.wwpdb.org)

A user guide is available at

<https://www.wwpdb.org/validation/2017/XrayValidationReportHelp>

with specific help available everywhere you see the ⓘ symbol.

---

The following versions of software and data (see [references ⓘ](#)) were used in the production of this report:

MolProbity : 4.02b-467  
Mogul : 1.8.5 (274361), CSD as541be (2020)  
Xtriage (Phenix) : 1.13  
EDS : 2.11  
buster-report : 1.1.7 (2018)  
Percentile statistics : 20191225.v01 (using entries in the PDB archive December 25th 2019)  
Refmac : 5.8.0158  
CCP4 : 7.0.044 (Gargrove)  
Ideal geometry (proteins) : Engh & Huber (2001)  
Ideal geometry (DNA, RNA) : Parkinson et al. (1996)  
Validation Pipeline (wwPDB-VP) : 2.11

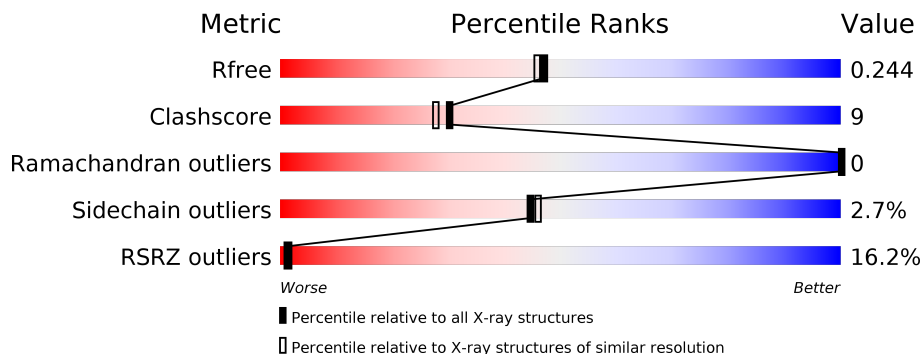
# 1 Overall quality at a glance

The following experimental techniques were used to determine the structure:

*X-RAY DIFFRACTION*

The reported resolution of this entry is 2.00 Å.

Percentile scores (ranging between 0-100) for global validation metrics of the entry are shown in the following graphic. The table shows the number of entries on which the scores are based.



Metric	Whole archive (#Entries)	Similar resolution (#Entries, resolution range(Å))
$R_{free}$	130704	8085 (2.00-2.00)
Clashscore	141614	9178 (2.00-2.00)
Ramachandran outliers	138981	9054 (2.00-2.00)
Sidechain outliers	138945	9053 (2.00-2.00)
RSRZ outliers	127900	7900 (2.00-2.00)

The table below summarises the geometric issues observed across the polymeric chains and their fit to the electron density. The red, orange, yellow and green segments on the lower bar indicate the fraction of residues that contain outliers for  $\geq 3$ , 2, 1 and 0 types of geometric quality criteria respectively. A grey segment represents the fraction of residues that are not modelled. The numeric value for each fraction is indicated below the corresponding segment, with a dot representing fractions  $\leq 5\%$ . The upper red bar (where present) indicates the fraction of residues that have poor fit to the electron density. The numeric value is given above the bar.

Mol	Chain	Length	Quality of chain
1	A	415	

## 2 Entry composition [i](#)

There are 6 unique types of molecules in this entry. The entry contains 3137 atoms, of which 0 are hydrogens and 0 are deuteriums.

In the tables below, the ZeroOcc column contains the number of atoms modelled with zero occupancy, the AltConf column contains the number of residues with at least one atom in alternate conformation and the Trace column contains the number of residues modelled with at most 2 atoms.

- Molecule 1 is a protein called Dihydroorotate dehydrogenase homolog, mitochondrial.

Mol	Chain	Residues	Atoms					ZeroOcc	AltConf	Trace
			Total	C	N	O	S			
1	A	370	2934	1878	489	552	15	0	0	0

There are 63 discrepancies between the modelled and reference sequences:

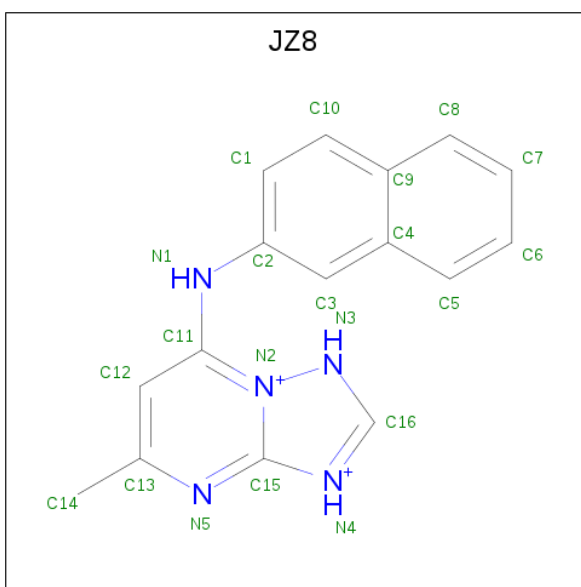
Chain	Residue	Modelled	Actual	Comment	Reference
A	125	MET	-	EXPRESSION TAG	UNP Q08210
A	126	GLY	-	EXPRESSION TAG	UNP Q08210
A	127	SER	-	EXPRESSION TAG	UNP Q08210
A	128	SER	-	EXPRESSION TAG	UNP Q08210
A	129	HIS	-	EXPRESSION TAG	UNP Q08210
A	130	HIS	-	EXPRESSION TAG	UNP Q08210
A	131	HIS	-	EXPRESSION TAG	UNP Q08210
A	132	HIS	-	EXPRESSION TAG	UNP Q08210
A	133	HIS	-	EXPRESSION TAG	UNP Q08210
A	134	HIS	-	EXPRESSION TAG	UNP Q08210
A	135	SER	-	EXPRESSION TAG	UNP Q08210
A	136	SER	-	EXPRESSION TAG	UNP Q08210
A	137	GLY	-	EXPRESSION TAG	UNP Q08210
A	138	LEU	-	EXPRESSION TAG	UNP Q08210
A	139	VAL	-	EXPRESSION TAG	UNP Q08210
A	140	PRO	-	EXPRESSION TAG	UNP Q08210
A	141	ARG	-	EXPRESSION TAG	UNP Q08210
A	142	GLY	-	EXPRESSION TAG	UNP Q08210
A	143	SER	-	EXPRESSION TAG	UNP Q08210
A	144	HIS	-	EXPRESSION TAG	UNP Q08210
A	145	MET	-	EXPRESSION TAG	UNP Q08210
A	146	ALA	-	EXPRESSION TAG	UNP Q08210
A	147	SER	-	EXPRESSION TAG	UNP Q08210
A	148	MET	-	EXPRESSION TAG	UNP Q08210
A	149	THR	-	EXPRESSION TAG	UNP Q08210
A	150	GLY	-	EXPRESSION TAG	UNP Q08210
A	151	GLY	-	EXPRESSION TAG	UNP Q08210

*Continued on next page...*

*Continued from previous page...*

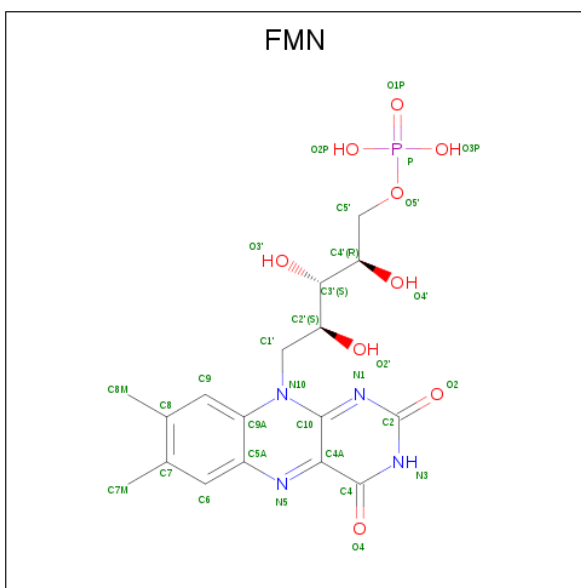
Chain	Residue	Modelled	Actual	Comment	Reference
A	152	GLN	-	EXPRESSION TAG	UNP Q08210
A	153	GLN	-	EXPRESSION TAG	UNP Q08210
A	154	GLY	-	EXPRESSION TAG	UNP Q08210
A	155	ARG	-	EXPRESSION TAG	UNP Q08210
A	156	ASP	-	EXPRESSION TAG	UNP Q08210
A	157	PRO	-	EXPRESSION TAG	UNP Q08210
A	?	-	SER	DELETION	UNP Q08210
A	?	-	THR	DELETION	UNP Q08210
A	?	-	TYR	DELETION	UNP Q08210
A	?	-	ASN	DELETION	UNP Q08210
A	?	-	GLU	DELETION	UNP Q08210
A	?	-	ASP	DELETION	UNP Q08210
A	?	-	ASN	DELETION	UNP Q08210
A	?	-	LYS	DELETION	UNP Q08210
A	?	-	ILE	DELETION	UNP Q08210
A	?	-	VAL	DELETION	UNP Q08210
A	?	-	GLU	DELETION	UNP Q08210
A	?	-	LYS	DELETION	UNP Q08210
A	?	-	LYS	DELETION	UNP Q08210
A	?	-	ASN	DELETION	UNP Q08210
A	?	-	ASN	DELETION	UNP Q08210
A	?	-	PHE	DELETION	UNP Q08210
A	?	-	ASN	DELETION	UNP Q08210
A	?	-	LYS	DELETION	UNP Q08210
A	?	-	ASN	DELETION	UNP Q08210
A	?	-	ASN	DELETION	UNP Q08210
A	?	-	SER	DELETION	UNP Q08210
A	?	-	HIS	DELETION	UNP Q08210
A	?	-	MET	DELETION	UNP Q08210
A	?	-	MET	DELETION	UNP Q08210
A	?	-	LYS	DELETION	UNP Q08210
A	?	-	ASP	DELETION	UNP Q08210
A	?	-	ALA	DELETION	UNP Q08210
A	?	-	LYS	DELETION	UNP Q08210
A	?	-	ASP	DELETION	UNP Q08210
A	?	-	ASN	DELETION	UNP Q08210

- Molecule 2 is 5-methyl-7-(naphthalen-2-ylamino)-1H-[1,2,4]triazolo[1,5-a]pyrimidine-3,8-diu m (three-letter code: JZ8) (formula: C<sub>16</sub>H<sub>15</sub>N<sub>5</sub>).



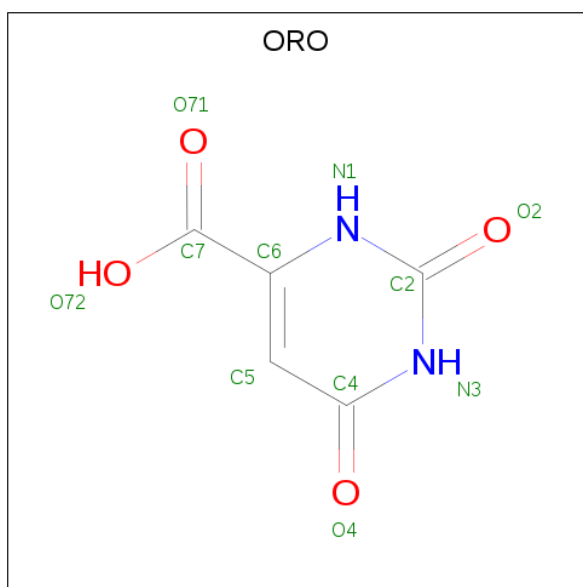
Mol	Chain	Residues	Atoms			ZeroOcc	AltConf
			Total	C	N		
2	A	1	21	16	5	0	0

- Molecule 3 is FLAVIN MONONUCLEOTIDE (three-letter code: FMN) (formula:  $C_{17}H_{21}N_4O_9P$ ).



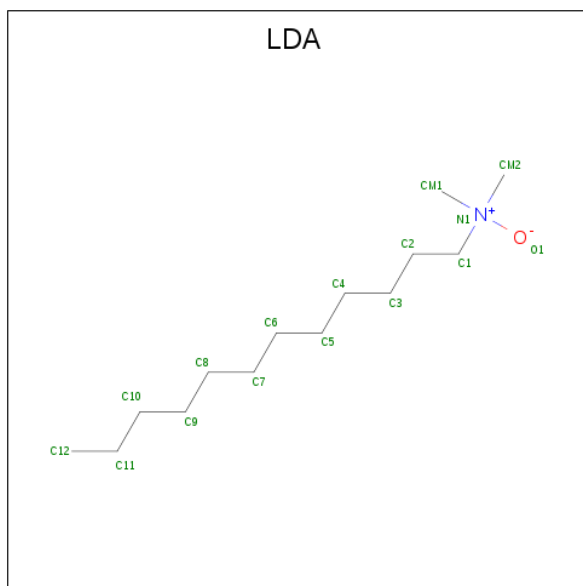
Mol	Chain	Residues	Atoms					ZeroOcc	AltConf
			Total	C	N	O	P		
3	A	1	31	17	4	9	1	0	0

- Molecule 4 is OROTIC ACID (three-letter code: ORO) (formula:  $C_5H_4N_2O_4$ ).



Mol	Chain	Residues	Atoms				ZeroOcc	AltConf
4	A	1	Total	C	N	O	0	0
			11	5	2	4		

- Molecule 5 is LAURYL DIMETHYLAMINE-N-OXIDE (three-letter code: LDA) (formula:  $C_{14}H_{31}NO$ ).



Mol	Chain	Residues	Atoms				ZeroOcc	AltConf
5	A	1	Total	C	N	O	0	0
			16	14	1	1		

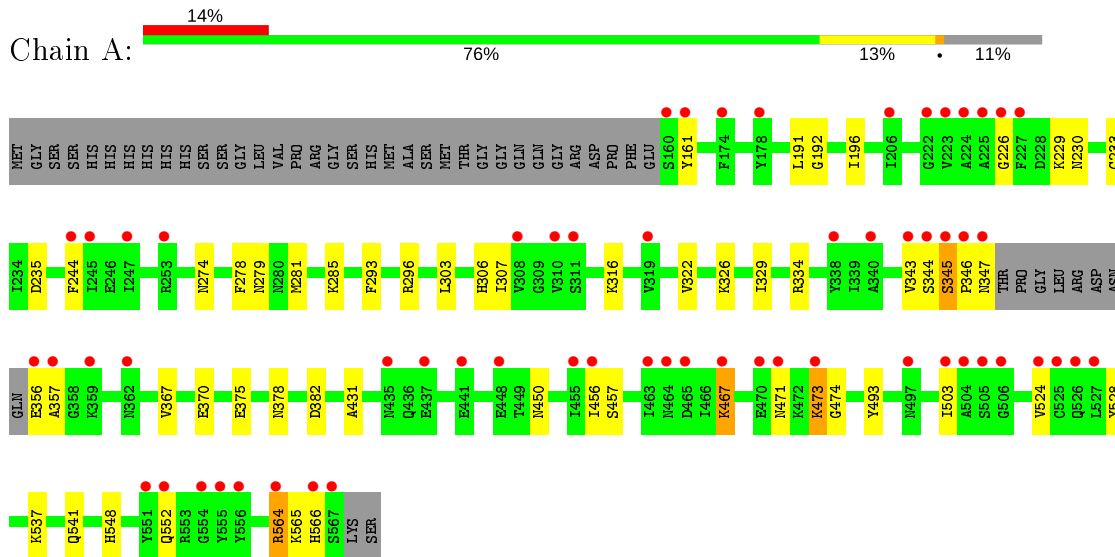
- Molecule 6 is water.

<b>Mol</b>	<b>Chain</b>	<b>Residues</b>	<b>Atoms</b>		<b>ZeroOcc</b>	<b>AltConf</b>
6	A	124	Total 124	O 124	0	0

### 3 Residue-property plots [i](#)

These plots are drawn for all protein, RNA and DNA chains in the entry. The first graphic for a chain summarises the proportions of the various outlier classes displayed in the second graphic. The second graphic shows the sequence view annotated by issues in geometry and electron density. Residues are color-coded according to the number of geometric quality criteria for which they contain at least one outlier: green = 0, yellow = 1, orange = 2 and red = 3 or more. A red dot above a residue indicates a poor fit to the electron density ( $RSRZ > 2$ ). Stretches of 2 or more consecutive residues without any outlier are shown as a green connector. Residues present in the sample, but not in the model, are shown in grey.

- Molecule 1: Dihydroorotate dehydrogenase homolog, mitochondrial





## 4 Data and refinement statistics

Property	Value	Source
Space group	P 64	Depositor
Cell constants a, b, c, $\alpha$ , $\beta$ , $\gamma$	85.86Å 85.86Å 138.35Å 90.00° 90.00° 120.00°	Depositor
Resolution (Å)	50.00 – 2.00 39.19 – 1.95	Depositor EDS
% Data completeness (in resolution range)	91.4 (50.00-2.00) 91.3 (39.19-1.95)	Depositor EDS
$R_{merge}$	0.06	Depositor
$R_{sym}$	(Not available)	Depositor
$\langle I/\sigma(I) \rangle$ <sup>1</sup>	1.18 (at 1.95Å)	Xtrriage
Refinement program	REFMAC 5.5.0072	Depositor
R, $R_{free}$	0.212 , 0.248 0.222 , 0.244	Depositor DCC
$R_{free}$ test set	800 reflections (2.07%)	wwPDB-VP
Wilson B-factor (Å <sup>2</sup> )	40.8	Xtrriage
Anisotropy	0.363	Xtrriage
Bulk solvent $k_{sol}$ (e/Å <sup>3</sup> ), $B_{sol}$ (Å <sup>2</sup> )	0.41 , 59.1	EDS
L-test for twinning <sup>2</sup>	$\langle  L  \rangle = 0.50$ , $\langle L^2 \rangle = 0.33$	Xtrriage
Estimated twinning fraction	0.055 for h,-h-k,-l	Xtrriage
$F_o, F_c$ correlation	0.95	EDS
Total number of atoms	3137	wwPDB-VP
Average B, all atoms (Å <sup>2</sup> )	45.0	wwPDB-VP

Xtrriage's analysis on translational NCS is as follows: *The largest off-origin peak in the Patterson function is 4.25% of the height of the origin peak. No significant pseudotranslation is detected.*

<sup>1</sup> Intensities estimated from amplitudes.

<sup>2</sup> Theoretical values of  $\langle |L| \rangle$ ,  $\langle L^2 \rangle$  for acentric reflections are 0.5, 0.333 respectively for untwinned datasets, and 0.375, 0.2 for perfectly twinned datasets.

## 5 Model quality [i](#)

### 5.1 Standard geometry [i](#)

Bond lengths and bond angles in the following residue types are not validated in this section: FMN, ORO, LDA, JZ8

The Z score for a bond length (or angle) is the number of standard deviations the observed value is removed from the expected value. A bond length (or angle) with  $|Z| > 5$  is considered an outlier worth inspection. RMSZ is the root-mean-square of all Z scores of the bond lengths (or angles).

Mol	Chain	Bond lengths		Bond angles	
		RMSZ	# Z  >5	RMSZ	# Z  >5
1	A	0.64	0/2983	0.64	0/4014

There are no bond length outliers.

There are no bond angle outliers.

There are no chirality outliers.

There are no planarity outliers.

### 5.2 Too-close contacts [i](#)

In the following table, the Non-H and H(model) columns list the number of non-hydrogen atoms and hydrogen atoms in the chain respectively. The H(added) column lists the number of hydrogen atoms added and optimized by MolProbity. The Clashes column lists the number of clashes within the asymmetric unit, whereas Symm-Clashes lists symmetry related clashes.

Mol	Chain	Non-H	H(model)	H(added)	Clashes	Symm-Clashes
1	A	2934	0	2976	56	0
2	A	21	0	15	0	0
3	A	31	0	19	1	0
4	A	11	0	3	0	0
5	A	16	0	31	3	0
6	A	124	0	0	9	0
All	All	3137	0	3044	56	0

The all-atom clashscore is defined as the number of clashes found per 1000 atoms (including hydrogen atoms). The all-atom clashscore for this structure is 9.

All (56) close contacts within the same asymmetric unit are listed below, sorted by their clash magnitude.

Atom-1	Atom-2	Interatomic distance (Å)	Clash overlap (Å)
1:A:326:LYS:HD2	1:A:370:GLU:HG3	1.31	1.07
1:A:356:GLU:HG3	1:A:357:ALA:H	1.29	0.97
1:A:326:LYS:HD2	1:A:370:GLU:CG	1.97	0.94
1:A:382:ASP:H	5:A:1004:LDA:H31	1.38	0.88
1:A:230:ASN:HB3	1:A:281:MET:HE1	1.58	0.86
1:A:346:PRO:O	1:A:347:ASN:HB2	1.79	0.82
1:A:346:PRO:O	1:A:347:ASN:CB	2.30	0.76
1:A:281:MET:HE3	1:A:285:LYS:HG3	1.72	0.71
1:A:306:HIS:HE1	6:A:56:HOH:O	1.74	0.70
1:A:278:PHE:HZ	1:A:345:SER:CB	2.05	0.69
1:A:356:GLU:CG	1:A:357:ALA:H	2.06	0.67
1:A:343:VAL:CG2	6:A:59:HOH:O	2.46	0.63
1:A:322:VAL:O	1:A:326:LYS:HG2	2.00	0.62
1:A:548:HIS:HB3	6:A:95:HOH:O	2.00	0.61
1:A:375:GLU:OE2	5:A:1004:LDA:HM13	2.02	0.60
1:A:278:PHE:CZ	1:A:345:SER:CB	2.85	0.60
1:A:316:LYS:NZ	6:A:97:HOH:O	2.21	0.59
1:A:343:VAL:HG22	6:A:59:HOH:O	2.03	0.58
1:A:191:LEU:HD22	1:A:196:ILE:HD11	1.87	0.57
1:A:356:GLU:HG3	1:A:357:ALA:N	2.10	0.56
1:A:278:PHE:CE1	1:A:345:SER:OG	2.51	0.56
1:A:329:ILE:HD11	1:A:367:VAL:HG13	1.87	0.55
1:A:235:ASP:OD1	1:A:303:LEU:HD11	2.05	0.55
1:A:552:GLN:NE2	6:A:95:HOH:O	2.40	0.55
1:A:467:LYS:H	1:A:467:LYS:CD	2.22	0.53
1:A:344:SER:HB2	1:A:431:ALA:HB2	1.93	0.50
1:A:278:PHE:HZ	1:A:345:SER:HB3	1.76	0.50
1:A:229:LYS:HD3	1:A:279:ASN:O	2.11	0.50
1:A:235:ASP:OD2	1:A:296:ARG:HD2	2.11	0.50
1:A:378:ASN:HB2	6:A:68:HOH:O	2.12	0.50
1:A:230:ASN:HB3	1:A:281:MET:CE	2.38	0.50
1:A:344:SER:O	1:A:344:SER:OG	2.29	0.49
1:A:537:LYS:HE2	1:A:541:GLN:HE22	1.77	0.49
1:A:346:PRO:HG2	1:A:347:ASN:ND2	2.27	0.49
1:A:382:ASP:H	5:A:1004:LDA:C3	2.19	0.49
1:A:334:ARG:HG3	6:A:46:HOH:O	2.12	0.48
1:A:343:VAL:HG23	6:A:59:HOH:O	2.11	0.48
1:A:235:ASP:OD1	1:A:293:PHE:CE1	2.67	0.47
1:A:326:LYS:HD2	1:A:370:GLU:HG2	1.89	0.47
1:A:473:LYS:HA	1:A:473:LYS:HD2	1.61	0.47
1:A:278:PHE:HE1	1:A:345:SER:HG	1.48	0.46
1:A:278:PHE:CZ	1:A:345:SER:OG	2.61	0.45

*Continued on next page...*

Continued from previous page...

Atom-1	Atom-2	Interatomic distance (Å)	Clash overlap (Å)
1:A:493:TYR:HD2	1:A:566:HIS:CE1	2.35	0.45
1:A:356:GLU:CG	1:A:357:ALA:N	2.76	0.45
1:A:226:GLY:HA3	3:A:1002:FMN:N5	2.31	0.45
1:A:564:ARG:O	1:A:564:ARG:HG3	2.17	0.45
1:A:274:ASN:O	1:A:474:GLY:HA3	2.18	0.44
1:A:346:PRO:C	1:A:347:ASN:CG	2.77	0.44
1:A:192:GLY:HA3	1:A:233:CYS:SG	2.58	0.43
1:A:235:ASP:OD1	1:A:293:PHE:CD1	2.72	0.43
1:A:244:PHE:HB3	1:A:307:ILE:HB	1.99	0.43
1:A:281:MET:HB2	1:A:281:MET:HE2	1.41	0.42
1:A:456:ILE:HA	1:A:457:SER:HA	1.87	0.41
1:A:235:ASP:OD1	1:A:303:LEU:CD1	2.67	0.41
1:A:503:ILE:N	1:A:503:ILE:HD12	2.36	0.41
1:A:471:ASN:OD1	1:A:471:ASN:N	2.53	0.40

There are no symmetry-related clashes.

## 5.3 Torsion angles [i](#)

### 5.3.1 Protein backbone [i](#)

In the following table, the Percentiles column shows the percent Ramachandran outliers of the chain as a percentile score with respect to all X-ray entries followed by that with respect to entries of similar resolution.

The Analysed column shows the number of residues for which the backbone conformation was analysed, and the total number of residues.

Mol	Chain	Analysed	Favoured	Allowed	Outliers	Percentiles
1	A	366/415 (88%)	355 (97%)	11 (3%)	0	<a href="#">100</a> <a href="#">100</a>

There are no Ramachandran outliers to report.

### 5.3.2 Protein sidechains [i](#)

In the following table, the Percentiles column shows the percent sidechain outliers of the chain as a percentile score with respect to all X-ray entries followed by that with respect to entries of similar resolution.

The Analysed column shows the number of residues for which the sidechain conformation was analysed, and the total number of residues.

Mol	Chain	Analysed	Rotameric	Outliers	Percentiles
1	A	328/365 (90%)	319 (97%)	9 (3%)	44 46

All (9) residues with a non-rotameric sidechain are listed below:

Mol	Chain	Res	Type
1	A	161	TYR
1	A	345	SER
1	A	450	ASN
1	A	467	LYS
1	A	473	LYS
1	A	524	VAL
1	A	528	TYR
1	A	564	ARG
1	A	565	LYS

Some sidechains can be flipped to improve hydrogen bonding and reduce clashes. All (6) such sidechains are listed below:

Mol	Chain	Res	Type
1	A	195	ASN
1	A	289	ASN
1	A	306	HIS
1	A	330	ASN
1	A	541	GLN
1	A	566	HIS

### 5.3.3 RNA [i](#)

There are no RNA molecules in this entry.

### 5.4 Non-standard residues in protein, DNA, RNA chains [i](#)

There are no non-standard protein/DNA/RNA residues in this entry.

### 5.5 Carbohydrates [i](#)

There are no carbohydrates in this entry.

## 5.6 Ligand geometry

4 ligands are modelled in this entry.

In the following table, the Counts columns list the number of bonds (or angles) for which Mogul statistics could be retrieved, the number of bonds (or angles) that are observed in the model and the number of bonds (or angles) that are defined in the Chemical Component Dictionary. The Link column lists molecule types, if any, to which the group is linked. The Z score for a bond length (or angle) is the number of standard deviations the observed value is removed from the expected value. A bond length (or angle) with  $|Z| > 2$  is considered an outlier worth inspection. RMSZ is the root-mean-square of all Z scores of the bond lengths (or angles).

Mol	Type	Chain	Res	Link	Bond lengths			Bond angles		
					Counts	RMSZ	# Z  > 2	Counts	RMSZ	# Z  > 2
4	ORO	A	1003	-	6,11,11	1.01	0	3,15,15	2.95	3 (100%)
3	FMN	A	1002	-	31,33,33	1.50	4 (12%)	40,50,50	1.94	6 (15%)
2	JZ8	A	1001	-	19,24,24	1.41	2 (10%)	24,34,34	1.19	3 (12%)
5	LDA	A	1004	-	12,15,15	1.97	1 (8%)	14,17,17	0.68	0

In the following table, the Chirals column lists the number of chiral outliers, the number of chiral centers analysed, the number of these observed in the model and the number defined in the Chemical Component Dictionary. Similar counts are reported in the Torsion and Rings columns. '-' means no outliers of that kind were identified.

Mol	Type	Chain	Res	Link	Chirals	Torsions	Rings
4	ORO	A	1003	-	-	0/0/4/4	0/1/1/1
3	FMN	A	1002	-	-	1/18/18/18	0/3/3/3
2	JZ8	A	1001	-	-	0/4/4/4	0/4/4/4
5	LDA	A	1004	-	-	11/13/13/13	-

All (7) bond length outliers are listed below:

Mol	Chain	Res	Type	Atoms	Z	Observed(Å)	Ideal(Å)
5	A	1004	LDA	O1-N1	-6.72	1.26	1.42
3	A	1002	FMN	C4A-N5	4.29	1.39	1.33
3	A	1002	FMN	C10-N1	3.83	1.38	1.33
3	A	1002	FMN	C4-N3	3.30	1.38	1.33
2	A	1001	JZ8	C9-C4	2.90	1.48	1.42
2	A	1001	JZ8	C2-N1	-2.15	1.36	1.40
3	A	1002	FMN	C5A-N5	2.01	1.38	1.35

All (12) bond angle outliers are listed below:

Mol	Chain	Res	Type	Atoms	Z	Observed(°)	Ideal(°)
3	A	1002	FMN	C4-N3-C2	7.17	121.20	115.14
3	A	1002	FMN	C4A-N5-C5A	4.74	121.51	116.77
3	A	1002	FMN	C4A-C4-N3	-3.95	118.02	123.43
3	A	1002	FMN	C1'-N10-C9A	3.92	121.38	118.29
3	A	1002	FMN	C10-C4A-N5	-3.78	118.64	121.26
2	A	1001	JZ8	C11-C12-C13	3.31	119.57	117.08
4	A	1003	ORO	C5-C4-N3	-3.06	120.51	124.08
4	A	1003	ORO	C4-C5-C6	3.05	118.70	116.73
2	A	1001	JZ8	N1-C11-N2	2.77	119.03	114.69
4	A	1003	ORO	C5-C6-N1	-2.72	119.12	122.35
3	A	1002	FMN	C5A-C9A-N10	2.55	119.57	117.72
2	A	1001	JZ8	C12-C13-N5	-2.14	120.03	122.57

There are no chirality outliers.

All (12) torsion outliers are listed below:

Mol	Chain	Res	Type	Atoms
5	A	1004	LDA	C2-C1-N1-O1
5	A	1004	LDA	C2-C1-N1-CM1
5	A	1004	LDA	C11-C10-C9-C8
5	A	1004	LDA	C6-C7-C8-C9
5	A	1004	LDA	C3-C4-C5-C6
5	A	1004	LDA	C7-C8-C9-C10
5	A	1004	LDA	C2-C3-C4-C5
5	A	1004	LDA	C1-C2-C3-C4
5	A	1004	LDA	C9-C10-C11-C12
3	A	1002	FMN	C4'-C5'-O5'-P
5	A	1004	LDA	C2-C1-N1-CM2
5	A	1004	LDA	C5-C6-C7-C8

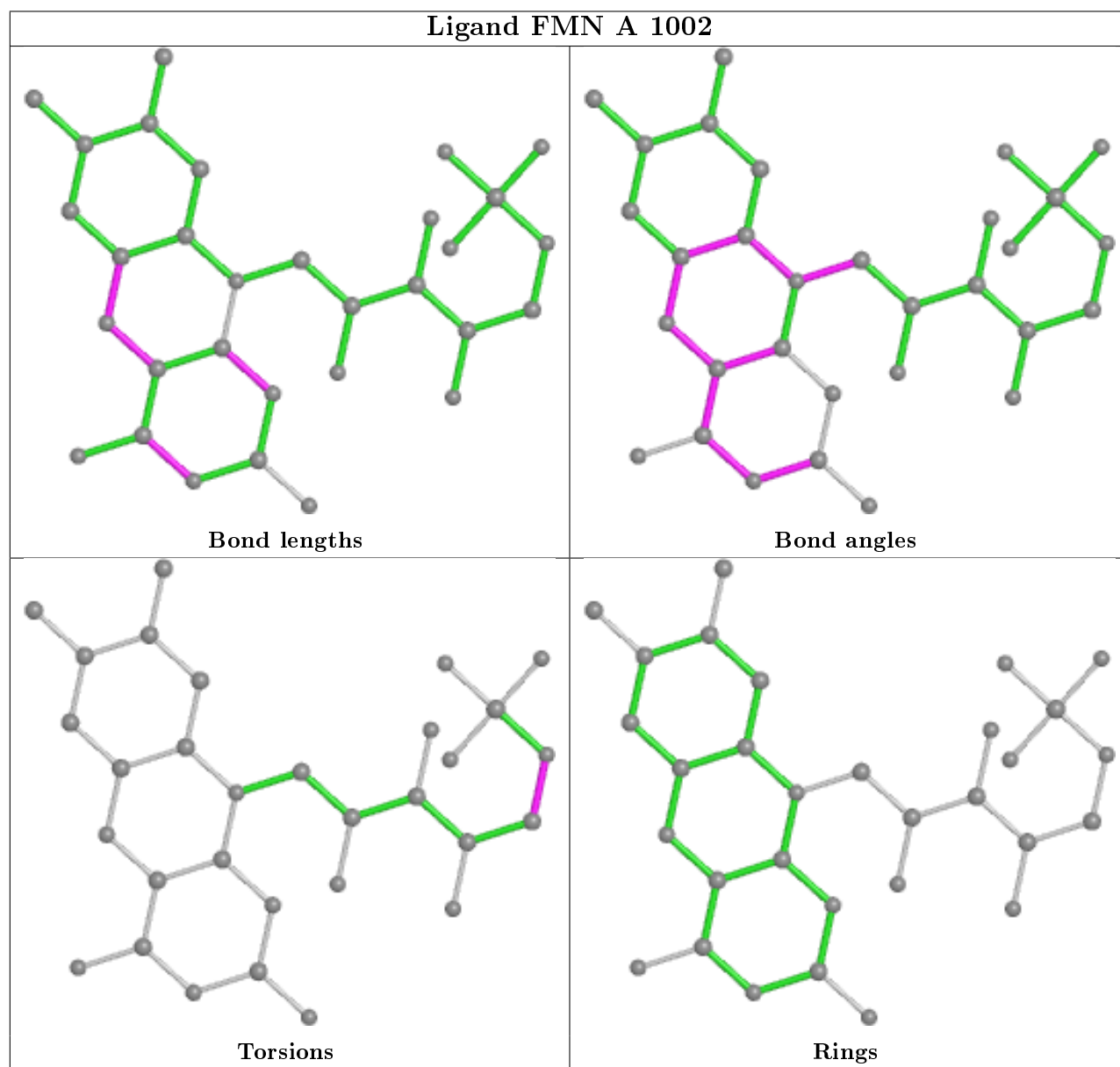
There are no ring outliers.

2 monomers are involved in 4 short contacts:

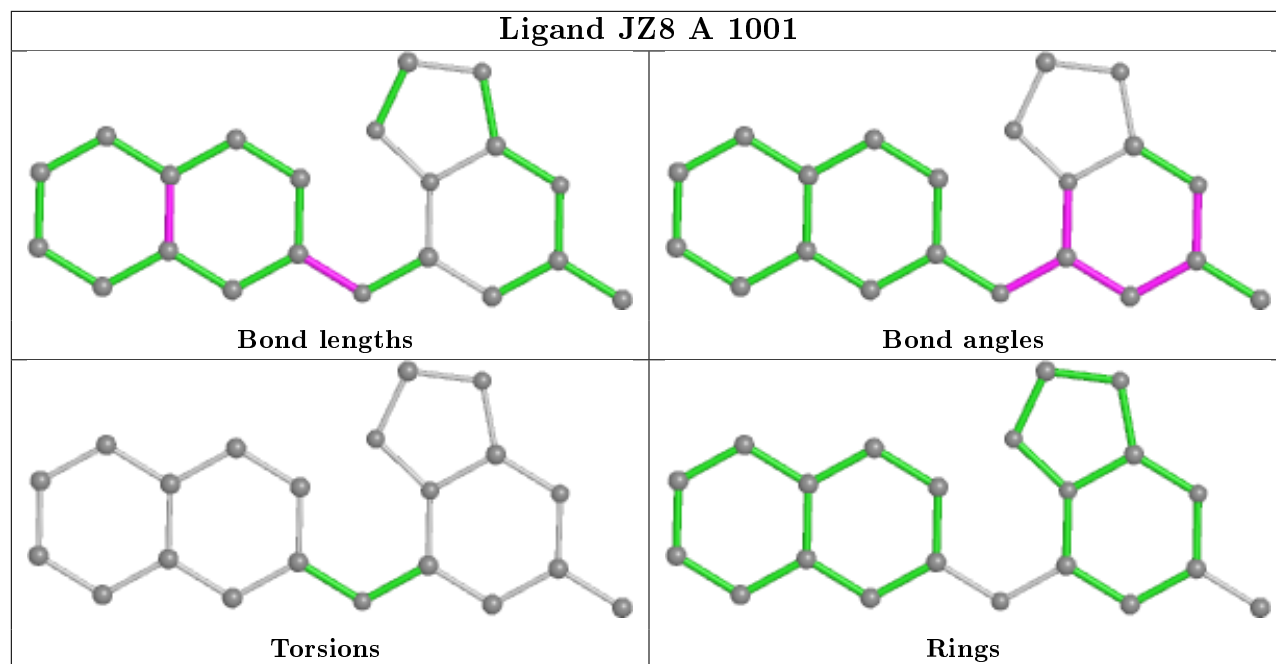
Mol	Chain	Res	Type	Clashes	Symm-Clashes
3	A	1002	FMN	1	0
5	A	1004	LDA	3	0

The following is a two-dimensional graphical depiction of Mogul quality analysis of bond lengths, bond angles, torsion angles, and ring geometry for all instances of the Ligand of Interest. In addition, ligands with molecular weight > 250 and outliers as shown on the validation Tables will also be included. For torsion angles, if less than 5% of the Mogul distribution of torsion angles is within 10 degrees of the torsion angle in question, then that torsion angle is considered an outlier. Any bond that is central to one or more torsion angles identified as an outlier by Mogul will be

highlighted in the graph. For rings, the root-mean-square deviation (RMSD) between the ring in question and similar rings identified by Mogul is calculated over all ring torsion angles. If the average RMSD is greater than 60 degrees and the minimal RMSD between the ring in question and any Mogul-identified rings is also greater than 60 degrees, then that ring is considered an outlier. The outliers are highlighted in purple. The color gray indicates Mogul did not find sufficient equivalents in the CSD to analyse the geometry.







## 5.7 Other polymers [i](#)

There are no such residues in this entry.

## 5.8 Polymer linkage issues [i](#)

There are no chain breaks in this entry.

## 6 Fit of model and data

### 6.1 Protein, DNA and RNA chains

In the following table, the column labelled ‘#RSRZ> 2’ contains the number (and percentage) of RSRZ outliers, followed by percent RSRZ outliers for the chain as percentile scores relative to all X-ray entries and entries of similar resolution. The OWAB column contains the minimum, median, 95<sup>th</sup> percentile and maximum values of the occupancy-weighted average B-factor per residue. The column labelled ‘Q< 0.9’ lists the number of (and percentage) of residues with an average occupancy less than 0.9.

Mol	Chain	Analysed	<RSRZ>	#RSRZ>2	OWAB(Å <sup>2</sup> )	Q<0.9
1	A	370/415 (89%)	0.73	60 (16%) <b>1</b> <b>1</b>	26, 44, 65, 77	1 (0%)

All (60) RSRZ outliers are listed below:

Mol	Chain	Res	Type	RSRZ
1	A	160	SER	9.9
1	A	161	TYR	7.7
1	A	556	TYR	6.8
1	A	567	SER	6.3
1	A	346	PRO	6.2
1	A	504	ALA	4.3
1	A	223	VAL	4.3
1	A	357	ALA	4.2
1	A	525	CYS	4.2
1	A	319	VAL	4.1
1	A	464	ASN	4.0
1	A	455	ILE	4.0
1	A	224	ALA	3.9
1	A	503	ILE	3.8
1	A	347	ASN	3.7
1	A	225	ALA	3.6
1	A	344	SER	3.5
1	A	551	TYR	3.4
1	A	506	GLY	3.3
1	A	526	GLN	3.3
1	A	467	LYS	3.2
1	A	356	GLU	3.2
1	A	456	ILE	3.2
1	A	505	SER	3.2
1	A	310	VAL	3.1
1	A	437	GLU	3.1
1	A	470	GLU	3.1

*Continued on next page...*

*Continued from previous page...*

Mol	Chain	Res	Type	RSRZ
1	A	253	ARG	3.1
1	A	473	LYS	3.0
1	A	245	ILE	2.9
1	A	343	VAL	2.9
1	A	527	LEU	2.9
1	A	345	SER	2.9
1	A	244	PHE	2.9
1	A	441	GLU	2.9
1	A	448	GLU	2.8
1	A	554	GLY	2.7
1	A	206	ILE	2.7
1	A	247	ILE	2.6
1	A	524	VAL	2.6
1	A	564	ARG	2.6
1	A	463	ILE	2.6
1	A	340	ALA	2.5
1	A	555	TYR	2.5
1	A	552	GLN	2.5
1	A	359	LYS	2.4
1	A	174	PHE	2.3
1	A	566	HIS	2.3
1	A	471	ASN	2.3
1	A	308	VAL	2.3
1	A	227	PHE	2.2
1	A	465	ASP	2.2
1	A	497	ASN	2.2
1	A	178	TYR	2.2
1	A	338	TYR	2.2
1	A	222	GLY	2.2
1	A	311	SER	2.1
1	A	226	GLY	2.1
1	A	362	ASN	2.0
1	A	435	ASN	2.0

## 6.2 Non-standard residues in protein, DNA, RNA chains [i](#)

There are no non-standard protein/DNA/RNA residues in this entry.

## 6.3 Carbohydrates [i](#)

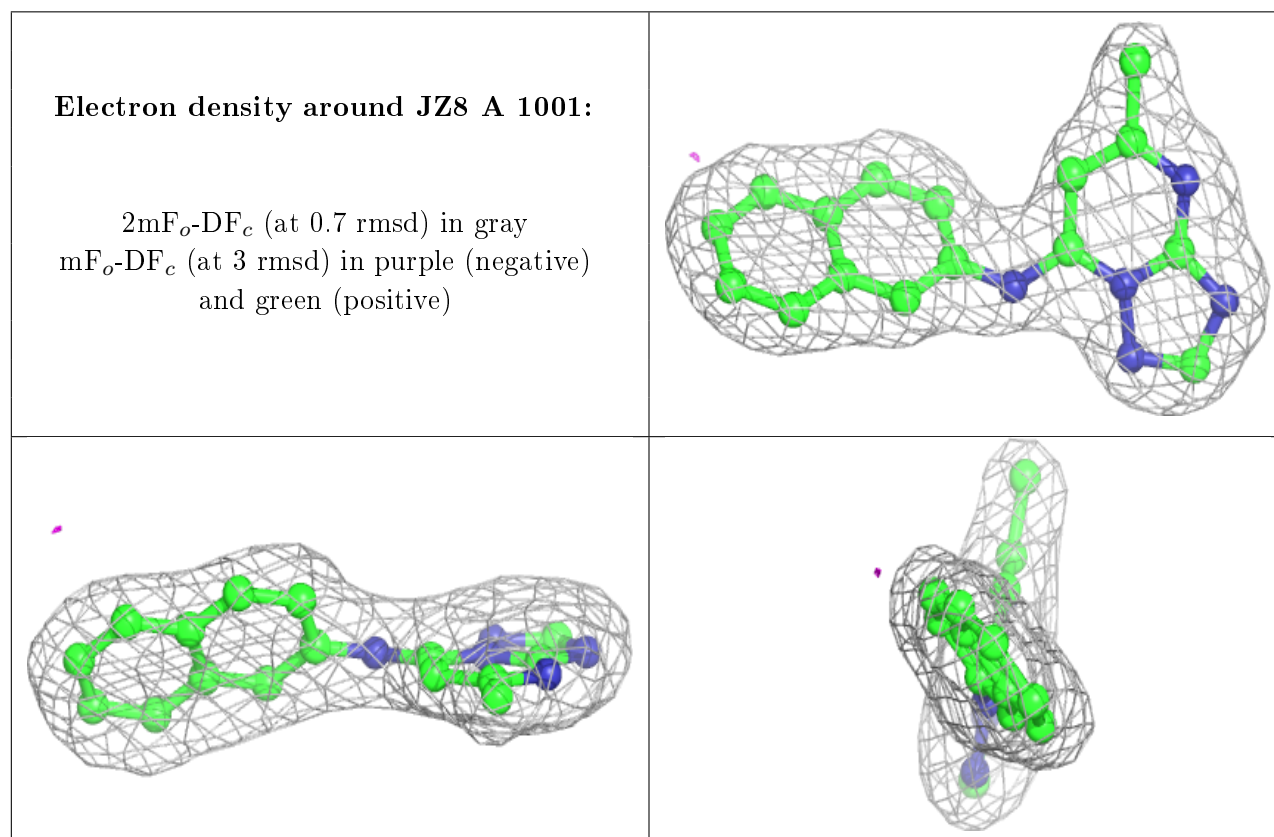
There are no carbohydrates in this entry.

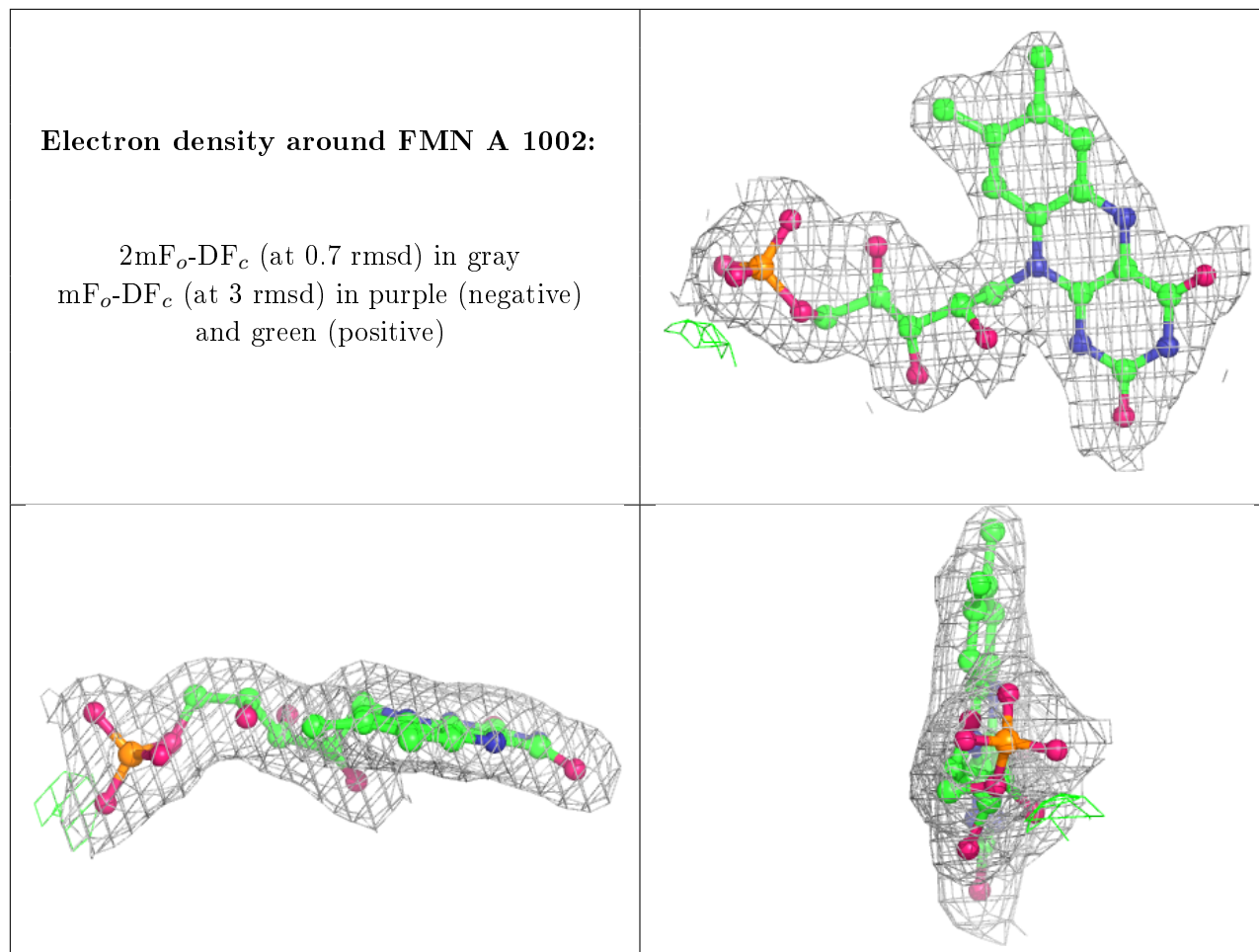
## 6.4 Ligands [i](#)

In the following table, the Atoms column lists the number of modelled atoms in the group and the number defined in the chemical component dictionary. The B-factors column lists the minimum, median, 95<sup>th</sup> percentile and maximum values of B factors of atoms in the group. The column labelled 'Q < 0.9' lists the number of atoms with occupancy less than 0.9.

Mol	Type	Chain	Res	Atoms	RSCC	RSR	B-factors(Å <sup>2</sup> )	Q<0.9
5	LDA	A	1004	16/16	0.79	0.25	42,50,59,59	0
2	JZ8	A	1001	21/21	0.96	0.12	29,31,33,34	0
4	ORO	A	1003	11/11	0.96	0.14	37,38,39,40	0
3	FMN	A	1002	31/31	0.97	0.22	29,33,36,37	0

The following is a graphical depiction of the model fit to experimental electron density of all instances of the Ligand of Interest. In addition, ligands with molecular weight > 250 and outliers as shown on the geometry validation Tables will also be included. Each fit is shown from different orientation to approximate a three-dimensional view.





## 6.5 Other polymers [i](#)

There are no such residues in this entry.