



Full wwPDB X-ray Structure Validation Report ⓘ

Mar 9, 2018 – 10:51 am GMT

PDB ID : 5I9M
Title : Crystal structure of *B. pseudomallei* FabI in complex with NAD and PT408
Authors : Hirschbeck, M.W.; Eltschkner, S.; Tonge, P.J.; Kisker, C.
Deposited on : 2016-02-20
Resolution : 2.25 Å(reported)

This is a Full wwPDB X-ray Structure Validation Report for a publicly released PDB entry.

We welcome your comments at validation@mail.wwpdb.org

A user guide is available at

<https://www.wwpdb.org/validation/2017/XrayValidationReportHelp>

with specific help available everywhere you see the ⓘ symbol.

The following versions of software and data (see [references ⓘ](#)) were used in the production of this report:

MolProbity : 4.02b-467
Mogul : 1.7.3 (157068), CSD as539be (2018)
Xtriage (Phenix) : 1.13
EDS : trunk30967
Percentile statistics : 20171227.v01 (using entries in the PDB archive December 27th 2017)
Refmac : 5.8.0158
CCP4 : 7.0 (Gargrove)
Ideal geometry (proteins) : Engh & Huber (2001)
Ideal geometry (DNA, RNA) : Parkinson et al. (1996)
Validation Pipeline (wwPDB-VP) : trunk30967

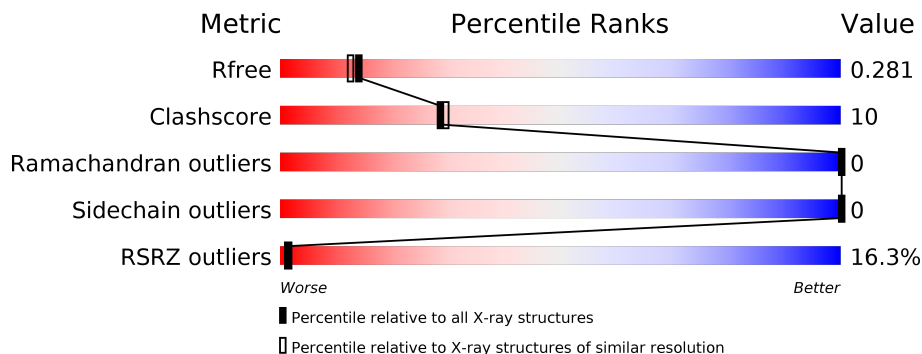
1 Overall quality at a glance

The following experimental techniques were used to determine the structure:

X-RAY DIFFRACTION

The reported resolution of this entry is 2.25 Å.

Percentile scores (ranging between 0-100) for global validation metrics of the entry are shown in the following graphic. The table shows the number of entries on which the scores are based.



Metric	Whole archive (#Entries)	Similar resolution (#Entries, resolution range(Å))
R_{free}	111664	1178 (2.26-2.26)
Clashscore	122126	1286 (2.26-2.26)
Ramachandran outliers	120053	1253 (2.26-2.26)
Sidechain outliers	120020	1254 (2.26-2.26)
RSRZ outliers	108989	1158 (2.26-2.26)

The table below summarises the geometric issues observed across the polymeric chains and their fit to the electron density. The red, orange, yellow and green segments on the lower bar indicate the fraction of residues that contain outliers for ≥ 3 , 2, 1 and 0 types of geometric quality criteria. A grey segment represents the fraction of residues that are not modelled. The numeric value for each fraction is indicated below the corresponding segment, with a dot representing fractions $\leq 5\%$. The upper red bar (where present) indicates the fraction of residues that have poor fit to the electron density. The numeric value is given above the bar.

Mol	Chain	Length	Quality of chain
1	A	276	
1	B	276	
1	C	276	

2 Entry composition i

There are 4 unique types of molecules in this entry. The entry contains 6225 atoms, of which 0 are hydrogens and 0 are deuteriums.

In the tables below, the ZeroOcc column contains the number of atoms modelled with zero occupancy, the AltConf column contains the number of residues with at least one atom in alternate conformation and the Trace column contains the number of residues modelled with at most 2 atoms.

- Molecule 1 is a protein called Enoyl-[acyl-carrier-protein] reductase [NADH].

Mol	Chain	Residues	Atoms					ZeroOcc	AltConf	Trace
			Total	C	N	O	S			
1	A	257	1912	1218	325	363	6	0	0	0
1	B	257	1912	1218	325	363	6	0	0	0
1	C	257	1912	1218	325	363	6	0	0	0

There are 39 discrepancies between the modelled and reference sequences:

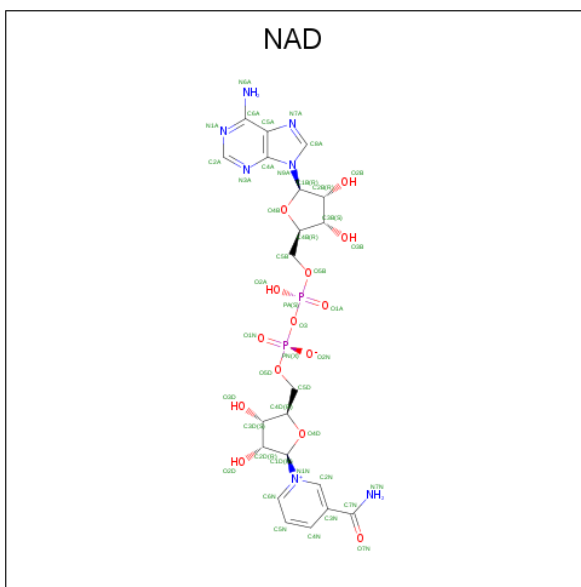
Chain	Residue	Modelled	Actual	Comment	Reference
A	264	LYS	-	expression tag	UNP A0A069B9A4
A	265	LEU	-	expression tag	UNP A0A069B9A4
A	266	ALA	-	expression tag	UNP A0A069B9A4
A	267	ALA	-	expression tag	UNP A0A069B9A4
A	268	ALA	-	expression tag	UNP A0A069B9A4
A	269	LEU	-	expression tag	UNP A0A069B9A4
A	270	GLU	-	expression tag	UNP A0A069B9A4
A	271	HIS	-	expression tag	UNP A0A069B9A4
A	272	HIS	-	expression tag	UNP A0A069B9A4
A	273	HIS	-	expression tag	UNP A0A069B9A4
A	274	HIS	-	expression tag	UNP A0A069B9A4
A	275	HIS	-	expression tag	UNP A0A069B9A4
A	276	HIS	-	expression tag	UNP A0A069B9A4
B	264	LYS	-	expression tag	UNP A0A069B9A4
B	265	LEU	-	expression tag	UNP A0A069B9A4
B	266	ALA	-	expression tag	UNP A0A069B9A4
B	267	ALA	-	expression tag	UNP A0A069B9A4
B	268	ALA	-	expression tag	UNP A0A069B9A4
B	269	LEU	-	expression tag	UNP A0A069B9A4
B	270	GLU	-	expression tag	UNP A0A069B9A4
B	271	HIS	-	expression tag	UNP A0A069B9A4
B	272	HIS	-	expression tag	UNP A0A069B9A4
B	273	HIS	-	expression tag	UNP A0A069B9A4

Continued on next page...

Continued from previous page...

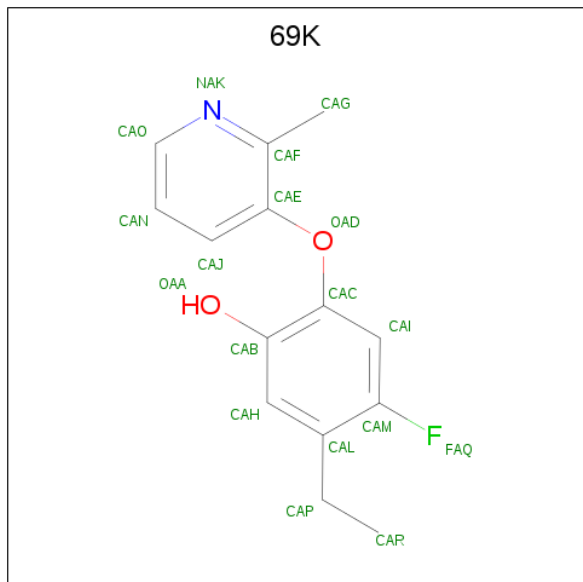
Chain	Residue	Modelled	Actual	Comment	Reference
B	274	HIS	-	expression tag	UNP A0A069B9A4
B	275	HIS	-	expression tag	UNP A0A069B9A4
B	276	HIS	-	expression tag	UNP A0A069B9A4
C	264	LYS	-	expression tag	UNP A0A069B9A4
C	265	LEU	-	expression tag	UNP A0A069B9A4
C	266	ALA	-	expression tag	UNP A0A069B9A4
C	267	ALA	-	expression tag	UNP A0A069B9A4
C	268	ALA	-	expression tag	UNP A0A069B9A4
C	269	LEU	-	expression tag	UNP A0A069B9A4
C	270	GLU	-	expression tag	UNP A0A069B9A4
C	271	HIS	-	expression tag	UNP A0A069B9A4
C	272	HIS	-	expression tag	UNP A0A069B9A4
C	273	HIS	-	expression tag	UNP A0A069B9A4
C	274	HIS	-	expression tag	UNP A0A069B9A4
C	275	HIS	-	expression tag	UNP A0A069B9A4
C	276	HIS	-	expression tag	UNP A0A069B9A4

- Molecule 2 is NICOTINAMIDE-ADENINE-DINUCLEOTIDE (three-letter code: NAD) (formula: $C_{21}H_{27}N_7O_{14}P_2$).



Mol	Chain	Residues	Atoms				ZeroOcc	AltConf	
			Total	C	N	O			P
2	A	1	Total	C	N	O	P	0	0
			44	21	7	14	2		
2	B	1	Total	C	N	O	P	0	0
			44	21	7	14	2		
2	C	1	Total	C	N	O	P	0	0
			44	21	7	14	2		

- Molecule 3 is 5-ethyl-4-fluoro-2-[(2-methylpyridin-3-yl)oxy]phenol (three-letter code: 69K) (formula: C₁₄H₁₄FNO₂).



Mol	Chain	Residues	Atoms				ZeroOcc	AltConf	
			Total	C	F	N			O
3	A	1	Total 18	C 14	F 1	N 1	O 2	0	0
3	B	1	Total 18	C 14	F 1	N 1	O 2	0	0
3	C	1	Total 18	C 14	F 1	N 1	O 2	0	0

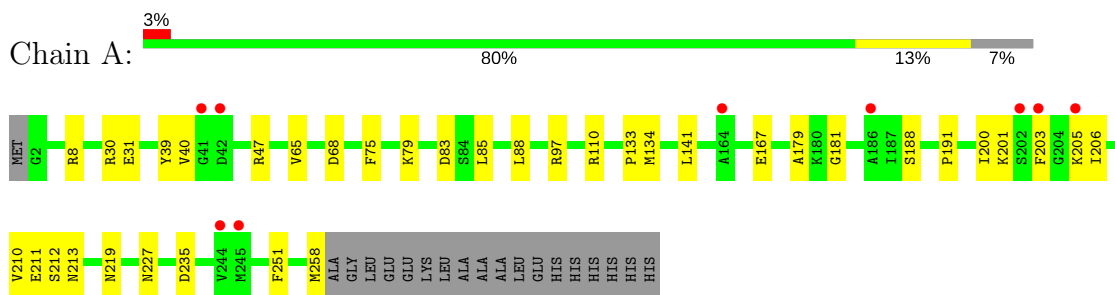
- Molecule 4 is water.

Mol	Chain	Residues	Atoms		ZeroOcc	AltConf
4	A	110	Total 110	O 110	0	0
4	B	89	Total 89	O 89	0	0
4	C	104	Total 104	O 104	0	0

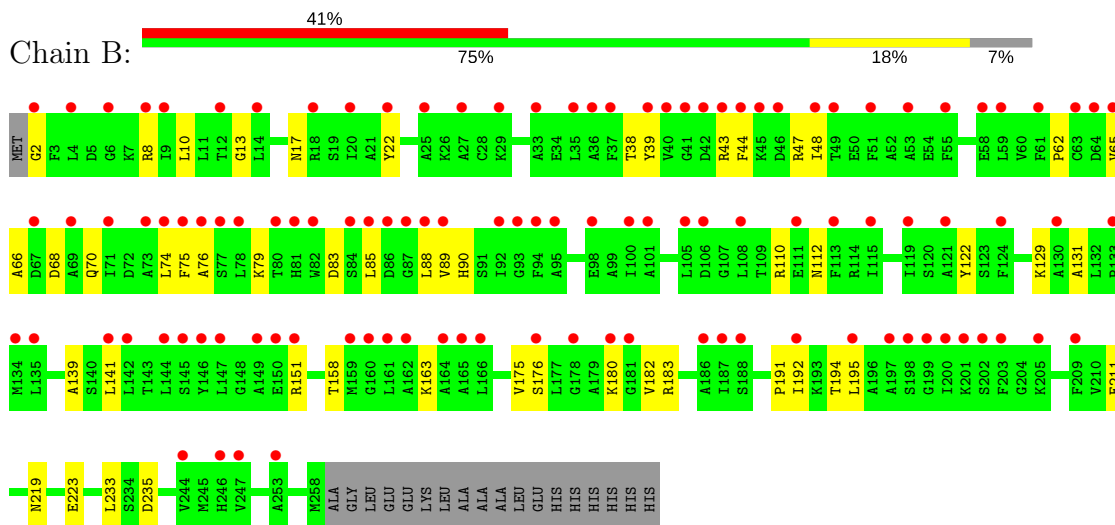
3 Residue-property plots i

These plots are drawn for all protein, RNA and DNA chains in the entry. The first graphic for a chain summarises the proportions of the various outlier classes displayed in the second graphic. The second graphic shows the sequence view annotated by issues in geometry and electron density. Residues are color-coded according to the number of geometric quality criteria for which they contain at least one outlier: green = 0, yellow = 1, orange = 2 and red = 3 or more. A red dot above a residue indicates a poor fit to the electron density ($RSRZ > 2$). Stretches of 2 or more consecutive residues without any outlier are shown as a green connector. Residues present in the sample, but not in the model, are shown in grey.

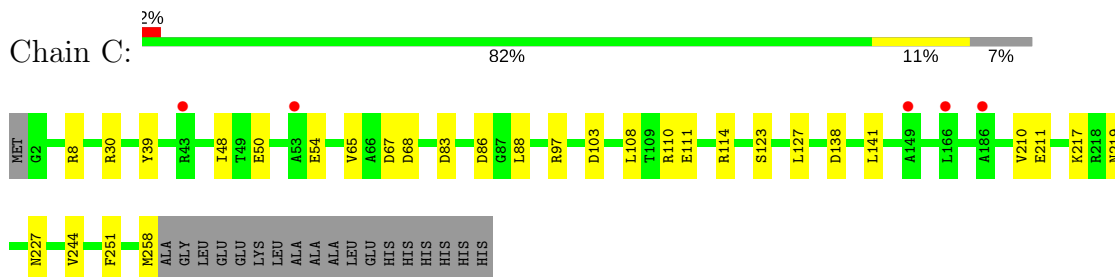
- Molecule 1: Enoyl-[acyl-carrier-protein] reductase [NADH]



- Molecule 1: Enoyl-[acyl-carrier-protein] reductase [NADH]



- Molecule 1: Enoyl-[acyl-carrier-protein] reductase [NADH]



4 Data and refinement statistics

Property	Value	Source
Space group	I 2 2 2	Depositor
Cell constants a, b, c, α , β , γ	69.03Å 111.22Å 260.69Å 90.00° 90.00° 90.00°	Depositor
Resolution (Å)	47.21 – 2.25 47.21 – 2.25	Depositor EDS
% Data completeness (in resolution range)	100.0 (47.21-2.25) 100.0 (47.21-2.25)	Depositor EDS
R_{merge}	0.09	Depositor
R_{sym}	(Not available)	Depositor
$\langle I/\sigma(I) \rangle$ ¹	2.74 (at 2.24Å)	Xtrriage
Refinement program	PHENIX 1.8_1069	Depositor
R, R_{free}	0.251 , 0.281 0.252 , 0.281	Depositor DCC
R_{free} test set	2441 reflections (5.07%)	wwPDB-VP
Wilson B-factor (Å ²)	37.9	Xtrriage
Anisotropy	0.347	Xtrriage
Bulk solvent k_{sol} (e/Å ³), B_{sol} (Å ²)	0.32 , 54.6	EDS
L-test for twinning ²	$\langle L \rangle = 0.42$, $\langle L^2 \rangle = 0.24$	Xtrriage
Estimated twinning fraction	No twinning to report.	Xtrriage
F_o, F_c correlation	0.92	EDS
Total number of atoms	6225	wwPDB-VP
Average B, all atoms (Å ²)	54.0	wwPDB-VP

Xtrriage's analysis on translational NCS is as follows: *The largest off-origin peak in the Patterson function is 18.98% of the height of the origin peak. No significant pseudotranslation is detected.*

¹Intensities estimated from amplitudes.

²Theoretical values of $\langle |L| \rangle$, $\langle L^2 \rangle$ for acentric reflections are 0.5, 0.333 respectively for untwinned datasets, and 0.375, 0.2 for perfectly twinned datasets.

5 Model quality [i](#)

5.1 Standard geometry [i](#)

Bond lengths and bond angles in the following residue types are not validated in this section: 69K, NAD

The Z score for a bond length (or angle) is the number of standard deviations the observed value is removed from the expected value. A bond length (or angle) with $|Z| > 5$ is considered an outlier worth inspection. RMSZ is the root-mean-square of all Z scores of the bond lengths (or angles).

Mol	Chain	Bond lengths		Bond angles	
		RMSZ	# Z >5	RMSZ	# Z >5
1	A	0.46	0/1945	0.56	0/2631
1	B	0.36	0/1945	0.52	0/2631
1	C	0.47	0/1945	0.57	0/2631
All	All	0.43	0/5835	0.55	0/7893

There are no bond length outliers.

There are no bond angle outliers.

There are no chirality outliers.

There are no planarity outliers.

5.2 Too-close contacts [i](#)

In the following table, the Non-H and H(model) columns list the number of non-hydrogen atoms and hydrogen atoms in the chain respectively. The H(added) column lists the number of hydrogen atoms added and optimized by MolProbity. The Clashes column lists the number of clashes within the asymmetric unit, whereas Symm-Clashes lists symmetry related clashes.

Mol	Chain	Non-H	H(model)	H(added)	Clashes	Symm-Clashes
1	A	1912	0	1919	39	2
1	B	1912	0	1919	60	1
1	C	1912	0	1919	19	2
2	A	44	0	25	1	0
2	B	44	0	24	11	0
2	C	44	0	24	2	0
3	A	18	0	0	0	0
3	B	18	0	0	0	0
3	C	18	0	0	0	0
4	A	110	0	0	29	0

Continued on next page...

Continued from previous page...

Mol	Chain	Non-H	H(model)	H(added)	Clashes	Symm-Clashes
4	B	89	0	0	46	0
4	C	104	0	0	11	0
All	All	6225	0	5830	123	4

The all-atom clashscore is defined as the number of clashes found per 1000 atoms (including hydrogen atoms). The all-atom clashscore for this structure is 10.

All (123) close contacts within the same asymmetric unit are listed below, sorted by their clash magnitude.

Atom-1	Atom-2	Interatomic distance (Å)	Clash overlap (Å)
1:A:134:MET:SD	4:A:406:HOH:O	2.23	0.97
1:B:70:GLN:NE2	4:B:403:HOH:O	1.97	0.96
1:B:2:GLY:N	4:B:406:HOH:O	2.02	0.91
1:A:258:MET:O	4:A:401:HOH:O	1.88	0.89
1:C:54:GLU:OE1	4:C:401:HOH:O	1.92	0.87
1:B:158:THR:O	4:B:401:HOH:O	1.91	0.86
1:A:85:LEU:N	4:A:405:HOH:O	2.08	0.85
1:B:43:ARG:O	4:B:402:HOH:O	1.94	0.84
1:A:47:ARG:NH2	4:A:410:HOH:O	2.12	0.82
1:A:235:ASP:OD2	4:A:404:HOH:O	1.99	0.81
1:A:203:PHE:N	4:A:411:HOH:O	2.14	0.80
1:B:90:HIS:NE2	4:B:420:HOH:O	2.15	0.80
1:B:38:THR:O	4:B:405:HOH:O	2.00	0.79
1:B:163:LYS:NZ	2:B:301:NAD:O2D	2.16	0.78
1:B:139:ALA:N	4:B:421:HOH:O	2.16	0.77
1:A:188:SER:OG	4:A:403:HOH:O	1.96	0.76
1:A:75:PHE:O	4:A:406:HOH:O	2.04	0.76
1:B:70:GLN:O	4:B:409:HOH:O	2.04	0.76
1:A:134:MET:HG2	4:A:424:HOH:O	1.85	0.76
1:B:112:ASN:OD1	4:B:410:HOH:O	2.05	0.74
1:A:134:MET:O	4:A:405:HOH:O	2.03	0.74
1:B:39:TYR:OH	4:B:408:HOH:O	2.03	0.74
1:A:181:GLY:O	4:A:407:HOH:O	2.04	0.74
1:B:47:ARG:HB2	4:B:444:HOH:O	1.89	0.72
2:B:301:NAD:O2A	4:B:413:HOH:O	2.08	0.71
1:A:200:ILE:HG22	4:A:411:HOH:O	1.92	0.68
1:B:191:PRO:O	4:B:416:HOH:O	2.12	0.68
1:A:213:ASN:O	4:A:408:HOH:O	2.10	0.67
1:B:235:ASP:OD2	4:B:418:HOH:O	2.13	0.67
1:B:90:HIS:CE1	4:B:420:HOH:O	2.48	0.67
2:B:301:NAD:O1A	4:B:415:HOH:O	2.11	0.67

Continued on next page...

Continued from previous page...

Atom-1	Atom-2	Interatomic distance (Å)	Clash overlap (Å)
1:B:17:ASN:ND2	4:B:426:HOH:O	2.23	0.67
1:B:122:TYR:OH	4:B:414:HOH:O	2.10	0.67
1:C:258:MET:O	4:C:402:HOH:O	2.13	0.66
1:C:67:ASP:OD1	4:C:403:HOH:O	2.14	0.66
1:B:195:LEU:N	4:B:415:HOH:O	2.28	0.65
1:C:244:VAL:O	4:C:404:HOH:O	2.14	0.65
1:B:74:LEU:N	4:B:409:HOH:O	2.28	0.65
1:A:191:PRO:O	4:A:412:HOH:O	2.15	0.64
1:A:40:VAL:N	4:A:402:HOH:O	1.90	0.63
1:B:233:LEU:O	4:B:419:HOH:O	2.15	0.62
1:A:134:MET:HG3	4:A:405:HOH:O	1.99	0.62
1:B:65:VAL:HG22	2:B:301:NAD:N1A	2.15	0.61
1:A:68:ASP:OD1	4:A:413:HOH:O	2.16	0.60
1:B:44:PHE:HA	4:B:402:HOH:O	2.01	0.60
1:C:8:ARG:HH22	1:C:83:ASP:HB3	1.65	0.59
1:A:134:MET:N	4:A:424:HOH:O	2.35	0.59
1:B:89:VAL:HG12	4:B:433:HOH:O	2.02	0.59
1:A:167:GLU:OE1	4:A:414:HOH:O	2.17	0.57
1:C:103:ASP:OD1	4:C:405:HOH:O	2.18	0.56
1:B:62:PRO:O	4:B:422:HOH:O	2.18	0.56
1:A:8:ARG:HH22	1:A:83:ASP:HB3	1.70	0.56
1:B:65:VAL:HG22	2:B:301:NAD:C6A	2.36	0.55
1:B:8:ARG:HH22	1:B:83:ASP:HB3	1.71	0.55
1:C:88:LEU:HB3	1:C:141:LEU:HD22	1.89	0.55
1:B:180:LYS:HE2	4:B:432:HOH:O	2.06	0.55
1:A:211:GLU:HB2	1:A:219:ASN:ND2	2.22	0.54
1:A:205:LYS:NZ	4:A:416:HOH:O	2.26	0.54
1:C:217:LYS:NZ	4:C:409:HOH:O	2.24	0.54
1:B:192:ILE:HG12	4:B:416:HOH:O	2.07	0.54
1:C:211:GLU:HB2	1:C:219:ASN:ND2	2.23	0.54
1:B:211:GLU:HB2	1:B:219:ASN:ND2	2.22	0.54
1:B:66:ALA:HA	4:B:440:HOH:O	2.08	0.53
1:A:212:SER:HA	4:A:449:HOH:O	2.09	0.52
1:B:194:THR:HB	4:B:415:HOH:O	2.09	0.52
1:B:88:LEU:HB3	1:B:141:LEU:HD22	1.90	0.52
1:A:79:LYS:NZ	1:A:83:ASP:O	2.42	0.52
1:B:13:GLY:HA2	2:B:301:NAD:H4B	1.91	0.52
1:B:175:VAL:HB	4:B:429:HOH:O	2.10	0.51
1:A:133:PRO:HB2	4:A:424:HOH:O	2.10	0.51
1:A:39:TYR:CA	4:A:402:HOH:O	2.59	0.51
1:B:182:VAL:HG22	4:B:421:HOH:O	2.11	0.50

Continued on next page...

Continued from previous page...

Atom-1	Atom-2	Interatomic distance (Å)	Clash overlap (Å)
1:A:88:LEU:HB3	1:A:141:LEU:HD22	1.92	0.50
1:B:47:ARG:N	4:B:444:HOH:O	2.43	0.49
1:B:151:ARG:NH2	4:B:427:HOH:O	2.25	0.49
1:A:134:MET:C	4:A:405:HOH:O	2.48	0.49
2:C:301:NAD:O2B	4:C:406:HOH:O	2.19	0.49
1:B:183:ARG:C	4:B:443:HOH:O	2.51	0.48
1:B:110:ARG:N	4:B:434:HOH:O	2.30	0.48
1:C:50:GLU:HB3	4:C:446:HOH:O	2.14	0.48
1:B:22:TYR:CE2	4:B:412:HOH:O	2.66	0.47
1:A:65:VAL:HG22	2:A:301:NAD:N1A	2.29	0.47
1:B:47:ARG:HG2	4:B:453:HOH:O	2.13	0.47
1:B:223:GLU:OE2	4:B:423:HOH:O	2.20	0.47
1:B:76:ALA:N	4:B:448:HOH:O	2.47	0.47
1:B:176:SER:N	4:B:429:HOH:O	2.47	0.47
1:B:192:ILE:HA	4:B:416:HOH:O	2.14	0.46
1:C:210:VAL:HG12	1:C:251:PHE:CD1	2.51	0.46
1:C:108:LEU:HA	4:C:457:HOH:O	2.15	0.46
1:B:85:LEU:C	4:B:435:HOH:O	2.54	0.46
1:B:79:LYS:NZ	1:B:83:ASP:O	2.45	0.45
1:B:10:LEU:H	1:B:85:LEU:HD11	1.82	0.45
1:C:65:VAL:HG22	2:C:301:NAD:N1A	2.31	0.45
1:B:13:GLY:CA	2:B:301:NAD:H4B	2.46	0.45
1:B:13:GLY:HA2	2:B:301:NAD:O3B	2.17	0.44
1:B:10:LEU:HD11	1:B:38:THR:HG23	2.00	0.44
1:A:210:VAL:HG12	1:A:251:PHE:CD1	2.53	0.44
1:A:85:LEU:HB3	4:A:405:HOH:O	2.16	0.44
1:A:30:ARG:NH2	1:A:227:ASN:OD1	2.51	0.43
1:B:83:ASP:O	4:B:425:HOH:O	2.21	0.43
1:C:30:ARG:NH2	1:C:227:ASN:OD1	2.51	0.43
1:A:200:ILE:C	4:A:411:HOH:O	2.57	0.43
2:B:301:NAD:H52A	2:B:301:NAD:H52N	2.01	0.43
1:C:97:ARG:NH2	4:C:428:HOH:O	2.52	0.42
1:C:111:GLU:OE2	1:C:114:ARG:NH2	2.43	0.42
1:A:206:ILE:O	1:A:210:VAL:HG22	2.19	0.42
2:B:301:NAD:H2B	4:B:413:HOH:O	2.19	0.42
1:B:75:PHE:CZ	1:B:131:ALA:HB2	2.55	0.42
1:B:47:ARG:CB	4:B:444:HOH:O	2.58	0.41
1:A:79:LYS:HD2	1:A:79:LYS:HA	1.91	0.41
1:B:75:PHE:CE1	1:B:131:ALA:HB2	2.56	0.41
1:C:123:SER:O	1:C:127:LEU:HG	2.21	0.41
1:B:194:THR:OG1	2:B:301:NAD:O2N	2.15	0.41

Continued on next page...

Continued from previous page...

Atom-1	Atom-2	Interatomic distance (Å)	Clash overlap (Å)
1:B:48:ILE:HD12	1:B:48:ILE:HA	1.91	0.41
1:A:201:LYS:C	4:A:411:HOH:O	2.58	0.41
1:A:30:ARG:NH1	1:A:31:GLU:OE2	2.53	0.41
1:B:39:TYR:CD2	1:B:48:ILE:HG21	2.55	0.41
1:B:43:ARG:HD3	4:B:455:HOH:O	2.21	0.41
1:C:86:ASP:O	4:C:407:HOH:O	2.22	0.41
1:B:129:LYS:HD3	4:B:473:HOH:O	2.21	0.41
1:A:179:ALA:HB3	4:A:477:HOH:O	2.21	0.40
1:A:30:ARG:NE	4:A:421:HOH:O	2.33	0.40
1:C:39:TYR:CD2	1:C:48:ILE:HG21	2.57	0.40

All (4) symmetry-related close contacts are listed below. The label for Atom-2 includes the symmetry operator and encoded unit-cell translations to be applied.

Atom-1	Atom-2	Interatomic distance (Å)	Clash overlap (Å)
1:B:68:ASP:OD1	1:B:110:ARG:NH1[2_555]	2.10	0.10
1:C:68:ASP:OD1	1:C:110:ARG:NH1[3_455]	2.15	0.05
1:A:97:ARG:NH1	1:C:138:ASP:OD2[1_655]	2.15	0.05
1:A:68:ASP:OD1	1:A:110:ARG:NH1[2_555]	2.16	0.04

5.3 Torsion angles [i](#)

5.3.1 Protein backbone [i](#)

In the following table, the Percentiles column shows the percent Ramachandran outliers of the chain as a percentile score with respect to all X-ray entries followed by that with respect to entries of similar resolution.

The Analysed column shows the number of residues for which the backbone conformation was analysed, and the total number of residues.

Mol	Chain	Analysed	Favoured	Allowed	Outliers	Percentiles	
1	A	255/276 (92%)	244 (96%)	11 (4%)	0	100	100
1	B	255/276 (92%)	244 (96%)	11 (4%)	0	100	100
1	C	255/276 (92%)	243 (95%)	12 (5%)	0	100	100
All	All	765/828 (92%)	731 (96%)	34 (4%)	0	100	100

There are no Ramachandran outliers to report.

5.3.2 Protein sidechains [i](#)

In the following table, the Percentiles column shows the percent sidechain outliers of the chain as a percentile score with respect to all X-ray entries followed by that with respect to entries of similar resolution.

The Analysed column shows the number of residues for which the sidechain conformation was analysed, and the total number of residues.

Mol	Chain	Analysed	Rotameric	Outliers	Percentiles	
1	A	195/209 (93%)	195 (100%)	0	100	100
1	B	195/209 (93%)	195 (100%)	0	100	100
1	C	195/209 (93%)	195 (100%)	0	100	100
All	All	585/627 (93%)	585 (100%)	0	100	100

There are no protein residues with a non-rotameric sidechain to report.

Some sidechains can be flipped to improve hydrogen bonding and reduce clashes. There are no such sidechains identified.

5.3.3 RNA [i](#)

There are no RNA molecules in this entry.

5.4 Non-standard residues in protein, DNA, RNA chains [i](#)

There are no non-standard protein/DNA/RNA residues in this entry.

5.5 Carbohydrates [i](#)

There are no carbohydrates in this entry.

5.6 Ligand geometry [i](#)

6 ligands are modelled in this entry.

In the following table, the Counts columns list the number of bonds (or angles) for which Mogul statistics could be retrieved, the number of bonds (or angles) that are observed in the model and the number of bonds (or angles) that are defined in the Chemical Component Dictionary. The Link column lists molecule types, if any, to which the group is linked. The Z score for a bond length (or angle) is the number of standard deviations the observed value is removed from the

expected value. A bond length (or angle) with $|Z| > 2$ is considered an outlier worth inspection. RMSZ is the root-mean-square of all Z scores of the bond lengths (or angles).

Mol	Type	Chain	Res	Link	Bond lengths			Bond angles		
					Counts	RMSZ	# Z > 2	Counts	RMSZ	# Z > 2
2	NAD	A	301	-	40,48,48	1.74	11 (27%)	44,73,73	2.26	9 (20%)
3	69K	A	302	-	18,19,19	1.02	1 (5%)	23,26,26	1.64	6 (26%)
2	NAD	B	301	-	40,48,48	1.88	12 (30%)	44,73,73	2.09	9 (20%)
3	69K	B	302	-	18,19,19	1.18	2 (11%)	23,26,26	1.71	4 (17%)
2	NAD	C	301	-	40,48,48	1.79	12 (30%)	44,73,73	2.11	6 (13%)
3	69K	C	302	-	18,19,19	1.16	2 (11%)	23,26,26	1.27	4 (17%)

In the following table, the Chirals column lists the number of chiral outliers, the number of chiral centers analysed, the number of these observed in the model and the number defined in the Chemical Component Dictionary. Similar counts are reported in the Torsion and Rings columns. '-' means no outliers of that kind were identified.

Mol	Type	Chain	Res	Link	Chirals	Torsions	Rings
2	NAD	A	301	-	-	0/22/62/62	0/5/5/5
3	69K	A	302	-	-	0/6/6/6	0/2/2/2
2	NAD	B	301	-	-	0/22/62/62	0/5/5/5
3	69K	B	302	-	-	0/6/6/6	0/2/2/2
2	NAD	C	301	-	-	0/22/62/62	0/5/5/5
3	69K	C	302	-	-	0/6/6/6	0/2/2/2

All (40) bond length outliers are listed below:

Mol	Chain	Res	Type	Atoms	Z	Observed(Å)	Ideal(Å)
2	B	301	NAD	O2D-C2D	-3.79	1.33	1.43
2	A	301	NAD	C5B-C4B	-3.75	1.39	1.51
2	B	301	NAD	C2D-C3D	-3.57	1.44	1.53
2	C	301	NAD	C2D-C3D	-3.55	1.44	1.53
2	A	301	NAD	C2D-C3D	-3.44	1.44	1.53
2	C	301	NAD	C5B-C4B	-3.42	1.40	1.51
2	B	301	NAD	C2B-C3B	-3.35	1.44	1.53
2	B	301	NAD	C5B-C4B	-3.20	1.41	1.51
2	A	301	NAD	O2D-C2D	-3.15	1.35	1.43
2	C	301	NAD	C2B-C3B	-3.11	1.45	1.53
2	C	301	NAD	O2D-C2D	-3.00	1.35	1.43
2	B	301	NAD	O2B-C2B	-2.92	1.35	1.43
2	C	301	NAD	O2B-C2B	-2.90	1.35	1.43
2	A	301	NAD	C2B-C3B	-2.82	1.46	1.53
2	A	301	NAD	C3B-C4B	-2.52	1.46	1.53
2	B	301	NAD	C3D-C4D	-2.37	1.46	1.53
2	C	301	NAD	C3D-C4D	-2.36	1.46	1.53
2	C	301	NAD	C3B-C4B	-2.25	1.47	1.53

Continued on next page...

Continued from previous page...

Mol	Chain	Res	Type	Atoms	Z	Observed(Å)	Ideal(Å)
2	C	301	NAD	PA-O2A	-2.21	1.44	1.55
2	A	301	NAD	O2B-C2B	-2.21	1.37	1.43
2	B	301	NAD	C3B-C4B	-2.12	1.47	1.53
3	C	302	69K	OAA-CAB	2.10	1.40	1.36
3	B	302	69K	CAI-CAM	2.12	1.41	1.37
2	A	301	NAD	C8A-N7A	2.13	1.38	1.34
3	C	302	69K	CAI-CAM	2.16	1.41	1.37
2	B	301	NAD	C6A-N6A	2.23	1.43	1.34
2	C	301	NAD	C6A-N6A	2.28	1.43	1.34
2	C	301	NAD	C2A-N1A	2.36	1.38	1.33
2	A	301	NAD	C6A-N6A	2.41	1.43	1.34
2	A	301	NAD	C2A-N3A	2.49	1.36	1.32
2	B	301	NAD	O4D-C1D	2.50	1.44	1.41
3	A	302	69K	OAA-CAB	2.51	1.41	1.36
3	B	302	69K	OAA-CAB	2.71	1.41	1.36
2	A	301	NAD	O4D-C1D	2.82	1.45	1.41
2	B	301	NAD	C2N-C3N	2.88	1.43	1.39
2	B	301	NAD	C2A-N3A	3.14	1.37	1.32
2	C	301	NAD	C7N-N7N	3.56	1.39	1.33
2	A	301	NAD	C7N-N7N	3.85	1.40	1.33
2	C	301	NAD	C2A-N3A	4.03	1.38	1.32
2	B	301	NAD	C7N-N7N	4.53	1.41	1.33

All (38) bond angle outliers are listed below:

Mol	Chain	Res	Type	Atoms	Z	Observed(°)	Ideal(°)
2	A	301	NAD	N3A-C2A-N1A	-9.17	121.02	128.86
2	C	301	NAD	N3A-C2A-N1A	-9.14	121.04	128.86
2	A	301	NAD	C4B-O4B-C1B	-8.01	101.48	109.83
2	B	301	NAD	N3A-C2A-N1A	-7.92	122.09	128.86
2	C	301	NAD	C4B-O4B-C1B	-6.41	103.14	109.83
2	B	301	NAD	C4B-O4B-C1B	-6.37	103.18	109.83
2	A	301	NAD	C4D-O4D-C1D	-4.12	105.54	109.83
2	B	301	NAD	C4A-C5A-N7A	-4.07	105.48	109.41
2	C	301	NAD	PN-O3-PA	-3.90	119.51	132.63
3	B	302	69K	CAI-CAM-CAL	-3.71	118.84	123.97
2	B	301	NAD	O7N-C7N-N7N	-3.67	117.26	122.60
3	B	302	69K	CAE-OAD-CAC	-3.37	109.78	118.04
2	A	301	NAD	C4A-C5A-N7A	-3.00	106.52	109.41
3	A	302	69K	CAI-CAM-CAL	-2.76	120.17	123.97
3	C	302	69K	CAI-CAM-CAL	-2.60	120.38	123.97
2	A	301	NAD	C5B-C4B-C3B	-2.52	105.79	115.29

Continued on next page...

Continued from previous page...

Mol	Chain	Res	Type	Atoms	Z	Observed(°)	Ideal(°)
2	C	301	NAD	C4D-O4D-C1D	-2.35	107.38	109.83
2	B	301	NAD	C1B-N9A-C4A	-2.28	122.69	126.64
2	A	301	NAD	C1B-N9A-C4A	-2.27	122.71	126.64
2	C	301	NAD	C4A-C5A-N7A	-2.26	107.22	109.41
2	B	301	NAD	C4N-C3N-C7N	-2.18	115.22	121.08
2	A	301	NAD	PN-O3-PA	-2.14	125.45	132.63
3	A	302	69K	CAE-OAD-CAC	-2.02	113.08	118.04
2	A	301	NAD	O4D-C4D-C3D	2.13	109.36	105.15
3	A	302	69K	CAG-CAF-NAK	2.13	122.08	117.86
2	A	301	NAD	C3N-C7N-N7N	2.15	120.25	117.76
3	A	302	69K	OAD-CAC-CAB	2.17	120.29	116.22
2	B	301	NAD	O5D-C5D-C4D	2.19	116.62	109.00
2	B	301	NAD	C2N-C3N-C7N	2.28	125.95	119.31
3	C	302	69K	CAO-NAK-CAF	2.29	121.46	118.37
3	C	302	69K	OAD-CAC-CAB	2.31	120.53	116.22
3	C	302	69K	CAH-CAL-CAM	2.42	119.47	116.70
3	A	302	69K	CAO-NAK-CAF	2.64	121.92	118.37
3	B	302	69K	CAO-NAK-CAF	2.79	122.13	118.37
2	C	301	NAD	O5D-C5D-C4D	2.83	118.85	109.00
3	B	302	69K	CAH-CAL-CAM	3.55	120.77	116.70
2	B	301	NAD	C3N-C7N-N7N	3.88	122.27	117.76
3	A	302	69K	CAH-CAL-CAM	4.08	121.38	116.70

There are no chirality outliers.

There are no torsion outliers.

There are no ring outliers.

3 monomers are involved in 14 short contacts:

Mol	Chain	Res	Type	Clashes	Symm-Clashes
2	A	301	NAD	1	0
2	B	301	NAD	11	0
2	C	301	NAD	2	0

5.7 Other polymers [i](#)

There are no such residues in this entry.

5.8 Polymer linkage issues [i](#)

There are no chain breaks in this entry.

6 Fit of model and data

6.1 Protein, DNA and RNA chains

In the following table, the column labelled ‘#RSRZ > 2’ contains the number (and percentage) of RSRZ outliers, followed by percent RSRZ outliers for the chain as percentile scores relative to all X-ray entries and entries of similar resolution. The OWAB column contains the minimum, median, 95th percentile and maximum values of the occupancy-weighted average B-factor per residue. The column labelled ‘Q < 0.9’ lists the number of (and percentage) of residues with an average occupancy less than 0.9.

Mol	Chain	Analysed	<RSRZ>	#RSRZ>2	OWAB(Å ²)	Q<0.9
1	A	257/276 (93%)	0.18	9 (3%) 44 47	17, 39, 68, 85	0
1	B	257/276 (93%)	2.03	112 (43%) 0 0	41, 86, 108, 122	0
1	C	257/276 (93%)	0.08	5 (1%) 66 70	24, 39, 61, 84	0
All	All	771/828 (93%)	0.76	126 (16%) 1 1	17, 48, 101, 122	0

All (126) RSRZ outliers are listed below:

Mol	Chain	Res	Type	RSRZ
1	B	73	ALA	9.5
1	B	78	LEU	6.9
1	B	199	GLY	6.2
1	B	82	TRP	6.1
1	B	71	ILE	5.7
1	B	55	PHE	5.6
1	B	74	LEU	5.4
1	B	58	GLU	5.3
1	B	59	LEU	5.3
1	B	65	VAL	5.2
1	B	63	CYS	4.9
1	B	40	VAL	4.8
1	B	41	GLY	4.7
1	B	22	TYR	4.7
1	B	37	PHE	4.7
1	B	44	PHE	4.7
1	B	76	ALA	4.7
1	B	200	ILE	4.6
1	B	6	GLY	4.6
1	B	36	ALA	4.6
1	B	150	GLU	4.4
1	B	80	THR	4.3
1	B	20	ILE	4.2

Continued on next page...

Continued from previous page...

Mol	Chain	Res	Type	RSRZ
1	B	209	PHE	4.2
1	B	198	SER	4.2
1	B	149	ALA	4.1
1	B	53	ALA	4.0
1	B	192	ILE	4.0
1	B	202	SER	4.0
1	B	94	PHE	4.0
1	B	145	SER	4.0
1	B	87	GLY	4.0
1	B	48	ILE	3.9
1	B	135	LEU	3.9
1	B	133	PRO	3.8
1	B	64	ASP	3.7
1	B	81	HIS	3.7
1	B	51	PHE	3.5
1	B	134	MET	3.5
1	B	115	ILE	3.4
1	B	201	LYS	3.4
1	B	195	LEU	3.4
1	B	130	ALA	3.3
1	B	27	ALA	3.3
1	B	113	PHE	3.3
1	B	95	ALA	3.2
1	B	75	PHE	3.2
1	B	92	ILE	3.2
1	B	12	THR	3.2
1	B	100	ILE	3.2
1	B	88	LEU	3.2
1	B	180	LYS	3.1
1	B	161	LEU	3.1
1	B	9	ILE	3.1
1	B	46	ASP	3.1
1	B	61	PHE	3.1
1	B	77	SER	3.1
1	B	147	LEU	3.1
1	B	84	SER	3.0
1	B	98	GLU	3.0
1	B	197	ALA	3.0
1	B	187	ILE	3.0
1	A	41	GLY	2.9
1	B	203	PHE	2.9
1	B	159	MET	2.9

Continued on next page...

Continued from previous page...

Mol	Chain	Res	Type	RSRZ
1	B	69	ALA	2.9
1	B	89	VAL	2.9
1	B	164	ALA	2.9
1	B	93	GLY	2.9
1	B	35	LEU	2.8
1	B	151	ARG	2.8
1	B	45	LYS	2.8
1	B	4	LEU	2.8
1	B	205	LYS	2.7
1	B	165	ALA	2.7
1	A	42	ASP	2.6
1	B	244	VAL	2.6
1	B	124	PHE	2.6
1	B	85	LEU	2.6
1	B	162	ALA	2.6
1	B	186	ALA	2.6
1	B	42	ASP	2.6
1	B	86	ASP	2.6
1	B	2	GLY	2.5
1	A	202	SER	2.5
1	B	178	GLY	2.5
1	A	244	VAL	2.5
1	B	101	ALA	2.5
1	B	246	HIS	2.5
1	B	25	ALA	2.5
1	B	253	ALA	2.5
1	B	108	LEU	2.4
1	B	33	ALA	2.4
1	B	166	LEU	2.4
1	B	106	ASP	2.4
1	B	144	LEU	2.4
1	B	67	ASP	2.4
1	B	121	ALA	2.4
1	B	39	TYR	2.4
1	B	14	LEU	2.4
1	B	176	SER	2.4
1	B	119	ILE	2.3
1	C	166	LEU	2.3
1	A	245	MET	2.3
1	B	49	THR	2.3
1	B	111	GLU	2.3
1	A	164	ALA	2.3

Continued on next page...

Continued from previous page...

Mol	Chain	Res	Type	RSRZ
1	A	203	PHE	2.3
1	B	8	ARG	2.2
1	B	29	LYS	2.2
1	B	160	GLY	2.2
1	B	142	LEU	2.2
1	B	188	SER	2.2
1	B	247	VAL	2.2
1	C	43	ARG	2.1
1	B	146	TYR	2.1
1	C	149	ALA	2.1
1	B	105	LEU	2.1
1	B	141	LEU	2.1
1	B	18	ARG	2.1
1	C	53	ALA	2.1
1	C	186	ALA	2.1
1	A	205	LYS	2.0
1	A	186	ALA	2.0
1	B	43	ARG	2.0
1	B	181	GLY	2.0

6.2 Non-standard residues in protein, DNA, RNA chains [i](#)

There are no non-standard protein/DNA/RNA residues in this entry.

6.3 Carbohydrates [i](#)

There are no carbohydrates in this entry.

6.4 Ligands [i](#)

In the following table, the Atoms column lists the number of modelled atoms in the group and the number defined in the chemical component dictionary. The B-factors column lists the minimum, median, 95th percentile and maximum values of B factors of atoms in the group. The column labelled 'Q< 0.9' lists the number of atoms with occupancy less than 0.9.

Mol	Type	Chain	Res	Atoms	RSCC	RSR	B-factors(Å ²)	Q<0.9
2	NAD	B	301	44/44	0.88	0.16	17,69,107,242	0
3	69K	B	302	18/18	0.89	0.23	38,68,89,96	0
2	NAD	C	301	44/44	0.97	0.10	10,30,47,94	0
3	69K	C	302	18/18	0.97	0.10	1,31,48,56	0

Continued on next page...

Continued from previous page...

Mol	Type	Chain	Res	Atoms	RSCC	RSR	B-factors(\AA^2)	Q<0.9
3	69K	A	302	18/18	0.97	0.10	9,23,38,44	0
2	NAD	A	301	44/44	0.97	0.10	6,18,37,56	0

6.5 Other polymers [i](#)

There are no such residues in this entry.