



Full wwPDB X-ray Structure Validation Report ⓘ

Sep 20, 2023 – 02:42 AM EDT

PDB ID : 5I9Q
Title : Crystal structure of 3BNC55 Fab in complex with 426c.TM4deltaV1-3 gp120
Authors : Scharf, L.; Chen, C.; Bjorkman, P.J.
Deposited on : 2016-02-20
Resolution : 3.00 Å(reported)

This is a Full wwPDB X-ray Structure Validation Report for a publicly released PDB entry.

We welcome your comments at validation@mail.wwpdb.org

A user guide is available at

<https://www.wwpdb.org/validation/2017/XrayValidationReportHelp>

with specific help available everywhere you see the ⓘ symbol.

The types of validation reports are described at

<http://www.wwpdb.org/validation/2017/FAQs#types>.

The following versions of software and data (see [references ⓘ](#)) were used in the production of this report:

MolProbity : 4.02b-467
Mogul : 1.8.5 (274361), CSD as541be (2020)
Xtriage (Phenix) : 1.13
EDS : 2.35.1
Percentile statistics : 20191225.v01 (using entries in the PDB archive December 25th 2019)
Refmac : 5.8.0158
CCP4 : 7.0.044 (Gargrove)
Ideal geometry (proteins) : Engh & Huber (2001)
Ideal geometry (DNA, RNA) : Parkinson et al. (1996)
Validation Pipeline (wwPDB-VP) : 2.35.1

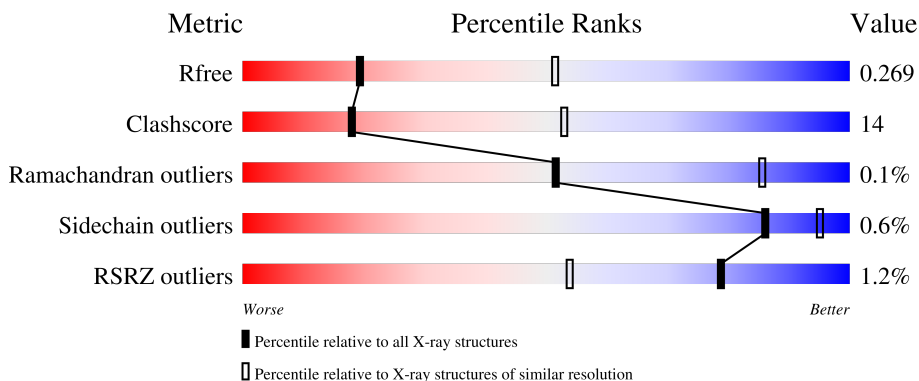
1 Overall quality at a glance

The following experimental techniques were used to determine the structure:

X-RAY DIFFRACTION

The reported resolution of this entry is 3.00 Å.

Percentile scores (ranging between 0-100) for global validation metrics of the entry are shown in the following graphic. The table shows the number of entries on which the scores are based.



Metric	Whole archive (#Entries)	Similar resolution (#Entries, resolution range(Å))
R_{free}	130704	2092 (3.00-3.00)
Clashscore	141614	2416 (3.00-3.00)
Ramachandran outliers	138981	2333 (3.00-3.00)
Sidechain outliers	138945	2336 (3.00-3.00)
RSRZ outliers	127900	1990 (3.00-3.00)

The table below summarises the geometric issues observed across the polymeric chains and their fit to the electron density. The red, orange, yellow and green segments of the lower bar indicate the fraction of residues that contain outliers for ≥ 3 , 2, 1 and 0 types of geometric quality criteria respectively. A grey segment represents the fraction of residues that are not modelled. The numeric value for each fraction is indicated below the corresponding segment, with a dot representing fractions $\leq 5\%$. The upper red bar (where present) indicates the fraction of residues that have poor fit to the electron density. The numeric value is given above the bar.

Mol	Chain	Length	Quality of chain
1	A	353	
1	G	353	
2	B	225	
2	H	225	
3	C	207	

Continued on next page...

Continued from previous page...

Mol	Chain	Length	Quality of chain
3	L	207	 % 78% 21%
4	D	6	 67% 33%
5	E	4	 75% 25%

The following table lists non-polymeric compounds, carbohydrate monomers and non-standard residues in protein, DNA, RNA chains that are outliers for geometric or electron-density-fit criteria:

Mol	Type	Chain	Res	Chirality	Geometry	Clashes	Electron density
4	NAG	D	1	-	-	-	X
4	NAG	D	2	-	-	-	X
6	NAG	A	602	-	-	-	X
6	NAG	A	605	-	-	-	X
7	EDO	G	605	-	-	-	X

2 Entry composition [i](#)

There are 8 unique types of molecules in this entry. The entry contains 11445 atoms, of which 0 are hydrogens and 0 are deuteriums.

In the tables below, the ZeroOcc column contains the number of atoms modelled with zero occupancy, the AltConf column contains the number of residues with at least one atom in alternate conformation and the Trace column contains the number of residues modelled with at most 2 atoms.

- Molecule 1 is a protein called 426c.TM4dV1-3 p120.

Mol	Chain	Residues	Atoms					ZeroOcc	AltConf	Trace
			Total	C	N	O	S			
1	A	340	Total	C	N	O	S	0	0	0
			2497	1564	429	482	22			
1	G	339	Total	C	N	O	S	0	0	0
			2535	1594	435	484	22			

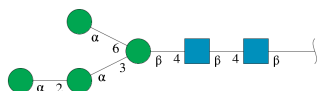
- Molecule 2 is a protein called 3BNC55 Fab heavy chain.

Mol	Chain	Residues	Atoms					ZeroOcc	AltConf	Trace
			Total	C	N	O	S			
2	B	202	Total	C	N	O	S	0	0	0
			1497	954	251	285	7			
2	H	213	Total	C	N	O	S	0	0	0
			1630	1037	272	314	7			

- Molecule 3 is a protein called 3BNC55 light chain.

Mol	Chain	Residues	Atoms					ZeroOcc	AltConf	Trace
			Total	C	N	O	S			
3	C	206	Total	C	N	O	S	0	0	0
			1442	908	233	295	6			
3	L	206	Total	C	N	O	S	0	0	0
			1560	975	264	315	6			

- Molecule 4 is an oligosaccharide called alpha-D-mannopyranose-(1-2)-alpha-D-mannopyranose-(1-3)-[alpha-D-mannopyranose-(1-6)]beta-D-mannopyranose-(1-4)-2-acetamido-2-deoxy-beta-D-glucopyranose-(1-4)-2-acetamido-2-deoxy-beta-D-glucopyranose.



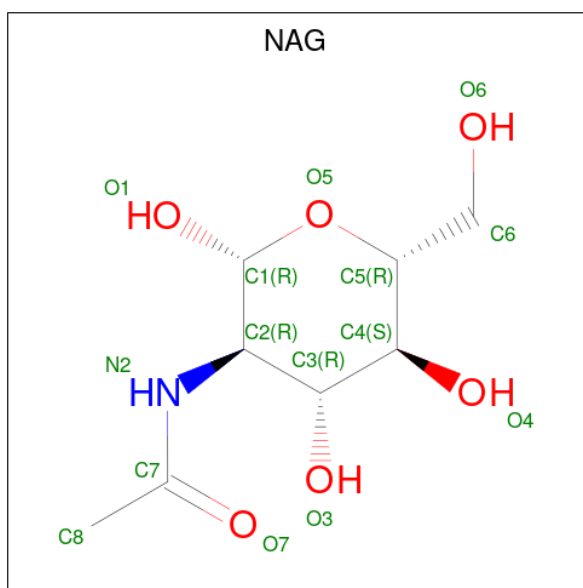
Mol	Chain	Residues	Atoms				ZeroOcc	AltConf	Trace
			Total	C	N	O			
4	D	6	Total	C	N	O	0	0	0
			72	40	2	30			

- Molecule 5 is an oligosaccharide called alpha-D-mannopyranose-(1-3)-beta-D-mannopyranos e-(1-4)-2-acetamido-2-deoxy-beta-D-glucopyranose-(1-4)-2-acetamido-2-deoxy-beta-D-glucopyranose.



Mol	Chain	Residues	Atoms				ZeroOcc	AltConf	Trace
			Total	C	N	O			
5	E	4	50	28	2	20	0	0	0

- Molecule 6 is 2-acetamido-2-deoxy-beta-D-glucopyranose (three-letter code: NAG) (formula: C₈H₁₅NO₆).



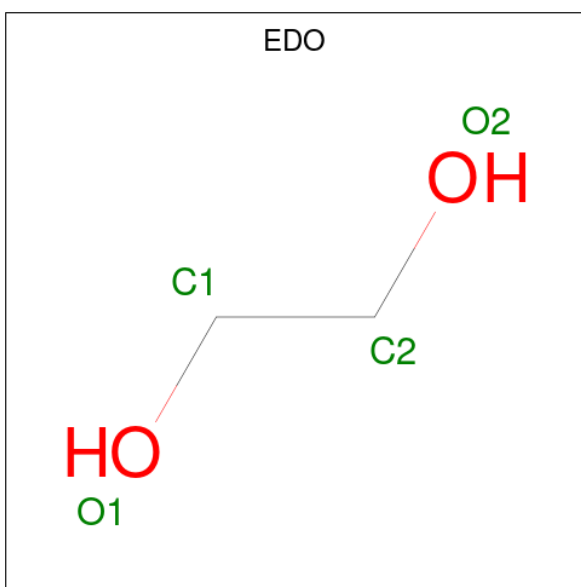
Mol	Chain	Residues	Atoms				ZeroOcc	AltConf
			Total	C	N	O		
6	A	1	14	8	1	5	0	0
6	A	1	14	8	1	5	0	0
6	A	1	14	8	1	5	0	0
6	A	1	14	8	1	5	0	0
6	A	1	14	8	1	5	0	0
6	G	1	14	8	1	5	0	0

Continued on next page...

Continued from previous page...

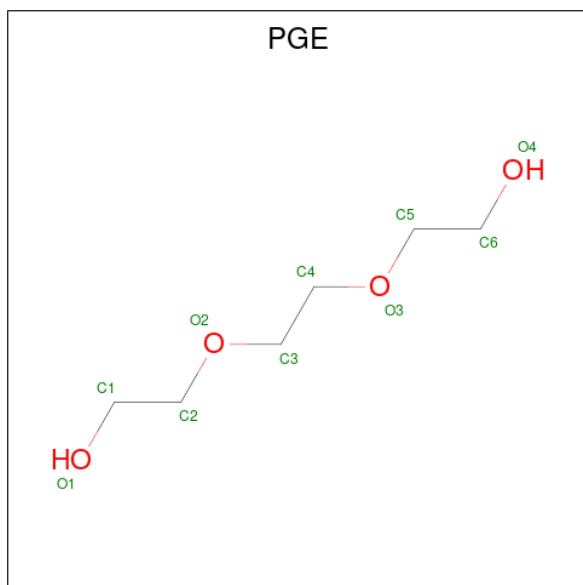
Mol	Chain	Residues	Atoms				ZeroOcc	AltConf
6	G	1	Total	C	N	O	0	0
			14	8	1	5		
6	G	1	Total	C	N	O	0	0
			14	8	1	5		
6	C	1	Total	C	N	O	0	0
			14	8	1	5		
6	L	1	Total	C	N	O	0	0
			14	8	1	5		

- Molecule 7 is 1,2-ETHANEDIOL (three-letter code: EDO) (formula: C₂H₆O₂).



Mol	Chain	Residues	Atoms		ZeroOcc	AltConf
7	A	1	Total	C O	0	0
			4	2 2		
7	A	1	Total	C O	0	0
			4	2 2		
7	G	1	Total	C O	0	0
			4	2 2		


- Molecule 8 is TRIETHYLENE GLYCOL (three-letter code: PGE) (formula: C₆H₁₄O₄).

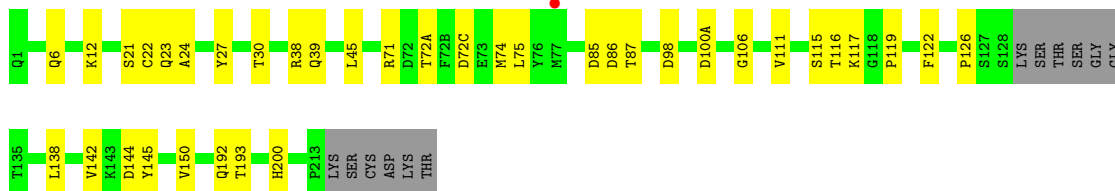


Mol	Chain	Residues	Atoms			ZeroOcc	AltConf
8	G	1	Total	C	O	0	0
			10	6	4		

CYS
ASP
LYS
THR

- Molecule 2: 3BNC55 Fab heavy chain

Chain H:  78% 16% 5%




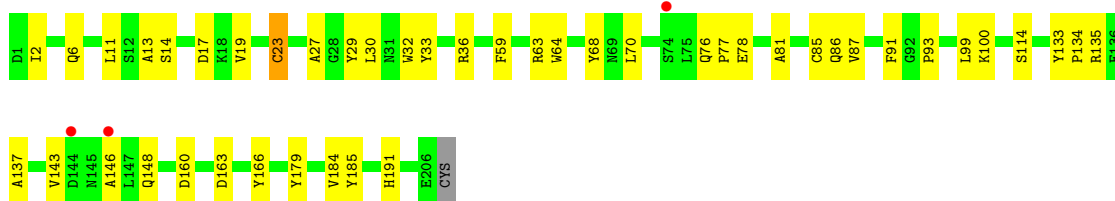
- Molecule 3: 3BNC55 light chain

Chain C:  63% 36%



- Molecule 3: 3BNC55 light chain

Chain L:  78% 21%



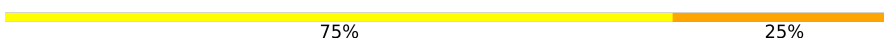
- Molecule 4: alpha-D-mannopyranose-(1-2)-alpha-D-mannopyranose-(1-3)-[alpha-D-mannopyranose-(1-6)]beta-D-mannopyranose-(1-4)-2-acetamido-2-deoxy-beta-D-glucopyranose-(1-4)-2-acetamido-2-deoxy-beta-D-glucopyranose

Chain D: 67% 33%

MAG1
MAG2
MAG3
MAM4
MAM5
MAM6

- Molecule 5: alpha-D-mannopyranose-(1-3)-beta-D-mannopyranose-(1-4)-2-acetamido-2-deoxy-beta-D-glucopyranose-(1-4)-2-acetamido-2-deoxy-beta-D-glucopyranose

Chain E:



MAG1
MAG2
BMA3
MAN4

4 Data and refinement statistics i

Property	Value	Source
Space group	P 31 2 1	Depositor
Cell constants a, b, c, α , β , γ	122.85Å 122.85Å 264.96Å 90.00° 90.00° 120.00°	Depositor
Resolution (Å)	37.54 – 3.00 39.76 – 2.80	Depositor EDS
% Data completeness (in resolution range)	80.4 (37.54-3.00) 70.1 (39.76-2.80)	Depositor EDS
R_{merge}	0.56	Depositor
R_{sym}	(Not available)	Depositor
$\langle I/\sigma(I) \rangle$ ¹	1.17 (at 2.81Å)	Xtrriage
Refinement program	PHENIX (1.10.1_2155: ???)	Depositor
R, R_{free}	0.251 , 0.270 0.252 , 0.269	Depositor DCC
R_{free} test set	2028 reflections (5.01%)	wwPDB-VP
Wilson B-factor (Å ²)	77.5	Xtrriage
Anisotropy	0.132	Xtrriage
Bulk solvent k_{sol} (e/Å ³), B_{sol} (Å ²)	0.31 , 48.2	EDS
L-test for twinning ²	$\langle L \rangle = 0.47$, $\langle L^2 \rangle = 0.30$	Xtrriage
Estimated twinning fraction	0.025 for -h,-k,l	Xtrriage
F_o, F_c correlation	0.89	EDS
Total number of atoms	11445	wwPDB-VP
Average B, all atoms (Å ²)	71.0	wwPDB-VP

Xtrriage's analysis on translational NCS is as follows: *The largest off-origin peak in the Patterson function is 2.78% of the height of the origin peak. No significant pseudotranslation is detected.*

¹Intensities estimated from amplitudes.

²Theoretical values of $\langle |L| \rangle$, $\langle L^2 \rangle$ for acentric reflections are 0.5, 0.333 respectively for untwinned datasets, and 0.375, 0.2 for perfectly twinned datasets.

5 Model quality [i](#)

5.1 Standard geometry [i](#)

Bond lengths and bond angles in the following residue types are not validated in this section: PGE, NAG, BMA, MAN, EDO

The Z score for a bond length (or angle) is the number of standard deviations the observed value is removed from the expected value. A bond length (or angle) with $|Z| > 5$ is considered an outlier worth inspection. RMSZ is the root-mean-square of all Z scores of the bond lengths (or angles).

Mol	Chain	Bond lengths		Bond angles	
		RMSZ	# $ Z > 5$	RMSZ	# $ Z > 5$
1	A	0.30	0/2550	0.48	1/3486 (0.0%)
1	G	0.29	0/2587	0.48	1/3532 (0.0%)
2	B	0.34	0/1539	0.59	2/2110 (0.1%)
2	H	0.28	0/1676	0.49	0/2292
3	C	0.44	0/1474	0.61	0/2024
3	L	0.31	0/1595	0.51	0/2178
All	All	0.32	0/11421	0.52	4/15622 (0.0%)

There are no bond length outliers.

All (4) bond angle outliers are listed below:

Mol	Chain	Res	Type	Atoms	Z	Observed($^{\circ}$)	Ideal($^{\circ}$)
1	A	298	ARG	N-CA-C	-5.65	95.74	111.00
2	B	122	PHE	C-N-CD	5.42	139.77	128.40
2	B	125	ALA	C-N-CD	5.21	139.35	128.40
1	G	252	LYS	C-N-CD	5.15	139.22	128.40

There are no chirality outliers.

There are no planarity outliers.

5.2 Too-close contacts [i](#)

In the following table, the Non-H and H(model) columns list the number of non-hydrogen atoms and hydrogen atoms in the chain respectively. The H(added) column lists the number of hydrogen atoms added and optimized by MolProbity. The Clashes column lists the number of clashes within the asymmetric unit, whereas Symm-Clashes lists symmetry-related clashes.

Mol	Chain	Non-H	H(model)	H(added)	Clashes	Symm-Clashes
1	A	2497	0	2286	58	0

Continued on next page...

Continued from previous page...

Mol	Chain	Non-H	H(model)	H(added)	Clashes	Symm-Clashes
1	G	2535	0	2375	37	0
2	B	1497	0	1366	58	0
2	H	1630	0	1556	32	0
3	C	1442	0	1263	94	0
3	L	1560	0	1452	34	0
4	D	72	0	61	6	0
5	E	50	0	43	3	0
6	A	70	0	65	0	0
6	C	14	0	13	0	0
6	G	42	0	39	3	0
6	L	14	0	13	0	0
7	A	8	0	12	1	0
7	G	4	0	6	0	0
8	G	10	0	14	0	0
All	All	11445	0	10564	298	0

The all-atom clashscore is defined as the number of clashes found per 1000 atoms (including hydrogen atoms). The all-atom clashscore for this structure is 14.

All (298) close contacts within the same asymmetric unit are listed below, sorted by their clash magnitude.

Atom-1	Atom-2	Interatomic distance (Å)	Clash overlap (Å)
1:A:273:ARG:NH1	1:A:484:TYR:CE1	1.99	1.27
1:A:273:ARG:NH1	1:A:484:TYR:CD1	2.02	1.26
2:B:138:LEU:O	2:B:181:VAL:HB	1.50	1.10
1:A:212:PRO:HG2	4:D:1:NAG:O7	1.51	1.09
1:A:297:THR:HG23	1:A:444:THR:HG22	1.39	1.04
1:A:248:THR:HG22	1:A:486:TYR:CE2	1.94	1.02
1:A:248:THR:HG22	1:A:486:TYR:CD2	1.97	0.99
3:C:23:CYS:SG	3:C:30:LEU:HD11	2.05	0.96
1:A:248:THR:CG2	1:A:486:TYR:CD2	2.48	0.95
2:B:126:PRO:HB3	2:B:137:ALA:O	1.68	0.92
1:A:212:PRO:CG	4:D:1:NAG:O7	2.18	0.91
3:C:179:TYR:CE1	3:C:185:TYR:CE1	2.59	0.89
3:C:179:TYR:HE1	3:C:185:TYR:CE1	1.90	0.88
1:A:297:THR:HG23	1:A:444:THR:CG2	2.06	0.85
2:B:19:ARG:NE	2:B:78:ASP:OD1	2.11	0.84
1:A:248:THR:CG2	1:A:486:TYR:CE2	2.60	0.83
1:A:297:THR:CG2	1:A:444:THR:HG22	2.09	0.83
3:C:175:SER:OG	3:C:178:ASP:OD2	1.98	0.81
1:G:430:VAL:CG1	2:H:72(A):THR:HG21	2.12	0.79

Continued on next page...

Continued from previous page...

Atom-1	Atom-2	Interatomic distance (Å)	Clash overlap (Å)
1:A:273:ARG:NH2	1:A:287:GLN:OE1	2.16	0.79
3:C:98:ASP:CB	3:C:159:GLN:NE2	2.46	0.77
1:A:248:THR:HG21	1:A:486:TYR:CD2	2.19	0.77
3:L:14:SER:OG	3:L:17:ASP:OD2	2.04	0.76
1:G:280:ASN:ND2	1:G:456:ARG:O	2.18	0.76
1:A:273:ARG:NH1	1:A:484:TYR:CG	2.54	0.75
1:A:212:PRO:CD	4:D:1:NAG:O7	2.37	0.73
3:C:2:ILE:HG13	3:C:27:ALA:CB	2.17	0.73
1:A:212:PRO:HD2	4:D:1:NAG:O7	1.91	0.71
3:C:148:GLN:HB3	3:C:151:ASN:HD21	1.56	0.70
1:G:95:MET:HE1	1:G:234:ASN:O	1.91	0.70
3:C:131:ASN:HA	3:C:165:THR:HB	1.72	0.70
2:B:40:ALA:HB1	2:B:41:PRO:HD2	1.73	0.69
3:C:2:ILE:HG13	3:C:27:ALA:HB3	1.74	0.69
1:G:298:ARG:NH1	1:G:441:GLY:O	2.26	0.68
2:B:153:SER:O	2:B:197:ASN:N	2.19	0.68
3:C:128:LEU:C	3:C:129:LEU:HD12	2.15	0.67
1:G:298:ARG:NH2	1:G:439:ILE:O	2.28	0.66
3:C:6:GLN:HG2	3:C:23:CYS:HB3	1.77	0.65
3:C:179:TYR:CD1	3:C:185:TYR:CZ	2.85	0.65
2:B:145:TYR:CE2	2:B:150:VAL:CG2	2.80	0.65
2:B:145:TYR:CE2	2:B:150:VAL:HG23	2.32	0.65
3:C:6:GLN:HG3	3:C:23:CYS:HB2	1.79	0.64
2:H:192:GLN:OE1	2:H:193:THR:N	2.31	0.64
3:C:98:ASP:CB	3:C:159:GLN:HE22	2.10	0.63
1:G:234:ASN:O	1:G:273:ARG:HG2	1.98	0.63
1:G:447:SER:HB3	5:E:1:NAG:HN2	1.63	0.63
3:C:29:TYR:HD2	3:C:88:TYR:HH	1.46	0.63
3:L:143:VAL:CG2	3:L:148:GLN:HE21	2.12	0.62
1:G:430:VAL:HG11	2:H:72(A):THR:HG21	1.82	0.62
3:L:27:ALA:HB1	3:L:87:VAL:HG21	1.79	0.62
3:C:66:THR:HG22	3:C:66:THR:O	2.00	0.62
3:C:179:TYR:HD1	3:C:185:TYR:OH	1.83	0.62
3:C:22:THR:OG1	3:C:69:ASN:OD1	2.12	0.61
3:C:131:ASN:CA	3:C:165:THR:HB	2.31	0.61
2:H:145:TYR:CE1	2:H:150:VAL:HG23	2.34	0.61
3:C:4:MET:HE2	3:C:92:GLY:HA2	1.81	0.61
3:C:179:TYR:HD1	3:C:185:TYR:CZ	2.19	0.61
1:A:264:SER:OG	1:A:482:GLU:OE1	2.18	0.61
1:A:93:PHE:HE2	1:A:487:LYS:CB	2.16	0.59
2:H:126:PRO:HG3	2:H:138:LEU:HB3	1.83	0.59

Continued on next page...

Continued from previous page...

Atom-1	Atom-2	Interatomic distance (Å)	Clash overlap (Å)
1:G:86:LEU:HB3	1:G:89:VAL:HG11	1.83	0.59
3:C:159:GLN:CG	3:C:166:TYR:CZ	2.86	0.59
1:A:101:VAL:HG21	1:A:480:ARG:HG2	1.85	0.59
1:A:282:LYS:NZ	2:B:98:ASP:OD1	2.28	0.59
2:H:39:GLN:HB3	2:H:45:LEU:HD23	1.84	0.58
1:A:93:PHE:CE2	1:A:487:LYS:CB	2.85	0.58
1:A:273:ARG:NH1	1:A:484:TYR:CZ	2.49	0.58
2:B:39:GLN:HB3	2:B:45:LEU:HD23	1.85	0.58
2:B:163:VAL:HG22	2:B:182:VAL:CB	2.34	0.58
3:C:131:ASN:HA	3:C:165:THR:HG1	1.69	0.58
3:C:131:ASN:HA	3:C:165:THR:CB	2.33	0.57
2:B:87:THR:HG23	2:B:110:ILE:HA	1.86	0.57
2:B:122:PHE:O	2:B:141:LEU:HB3	2.04	0.56
2:B:138:LEU:C	2:B:181:VAL:HB	2.22	0.56
3:C:2:ILE:HG13	3:C:27:ALA:HB2	1.88	0.56
3:C:109:PHE:N	3:C:109:PHE:CD2	2.74	0.55
3:C:179:TYR:HD1	3:C:185:TYR:HH	1.51	0.55
2:B:138:LEU:O	2:B:181:VAL:CB	2.40	0.55
1:A:430:VAL:HG11	2:B:72(A):THR:HG21	1.88	0.55
3:C:131:ASN:C	3:C:165:THR:HB	2.27	0.55
2:B:163:VAL:HA	2:B:182:VAL:CB	2.37	0.54
2:H:142:VAL:HG11	2:H:150:VAL:HG11	1.88	0.54
3:C:107:SER:HB2	3:C:109:PHE:HE2	1.72	0.54
2:B:43:GLN:HG3	2:B:44:GLY:N	2.23	0.53
3:C:159:GLN:NE2	3:C:166:TYR:OH	2.36	0.53
1:A:427:TRP:HD1	7:A:606:EDO:HO2	1.55	0.53
1:A:55:ALA:HA	1:A:75:VAL:O	2.09	0.53
3:C:159:GLN:HG2	3:C:166:TYR:CE2	2.43	0.53
3:L:27:ALA:CB	3:L:87:VAL:HG21	2.39	0.53
2:B:65:GLY:O	2:B:80:ARG:CZ	2.57	0.53
2:B:185:PRO:HD2	2:B:188:SER:CB	2.39	0.53
3:C:2:ILE:CG1	3:C:27:ALA:HB3	2.39	0.53
3:C:159:GLN:HG3	3:C:166:TYR:CZ	2.44	0.53
2:H:23:GLN:HG3	2:H:74:MET:HG2	1.90	0.53
2:B:185:PRO:HD2	2:B:188:SER:HB3	1.90	0.52
3:C:159:GLN:HG2	3:C:166:TYR:CZ	2.44	0.52
3:L:63:ARG:HD3	3:L:68:TYR:CE1	2.45	0.52
3:C:129:LEU:CD1	3:C:129:LEU:N	2.72	0.52
2:B:145:TYR:CE2	2:B:150:VAL:HG21	2.45	0.52
3:C:30:LEU:HD23	3:C:31:ASN:N	2.24	0.52
3:C:148:GLN:OE1	3:C:151:ASN:ND2	2.42	0.52

Continued on next page...

Continued from previous page...

Atom-1	Atom-2	Interatomic distance (Å)	Clash overlap (Å)
3:C:157:THR:HG22	3:C:158:GLU:O	2.10	0.52
1:A:298:ARG:NH1	1:A:326:ILE:O	2.40	0.52
1:G:430:VAL:HG13	2:H:72(A):THR:HG21	1.91	0.52
3:L:2:ILE:CG1	3:L:27:ALA:HB2	2.39	0.51
3:C:45:MET:HE1	3:C:61:GLY:HA3	1.91	0.51
2:H:12:LYS:O	2:H:111:VAL:HA	2.10	0.51
2:H:38:ARG:NH2	2:H:85:ASP:O	2.42	0.51
2:B:65:GLY:O	2:B:80:ARG:NH1	2.43	0.51
3:C:4:MET:SD	3:C:87:VAL:HG12	2.51	0.51
3:C:6:GLN:HG2	3:C:23:CYS:CB	2.40	0.51
1:A:390:PHE:CG	1:A:470:PRO:HG3	2.46	0.51
3:C:98:ASP:CB	3:C:159:GLN:HE21	2.24	0.51
1:G:430:VAL:HG21	2:H:30:THR:HG21	1.93	0.51
3:C:111:PHE:N	3:C:111:PHE:CD2	2.79	0.51
3:C:6:GLN:CG	3:C:23:CYS:CB	2.89	0.51
3:C:160:ASP:OD1	3:C:162:LYS:N	2.41	0.51
3:L:76:GLN:HG2	3:L:77:PRO:HD2	1.92	0.51
3:C:129:LEU:HD12	3:C:129:LEU:N	2.23	0.51
2:H:150:VAL:HG22	2:H:200:HIS:HD2	1.74	0.51
3:C:34:GLN:HB2	3:C:44:LEU:HD11	1.92	0.50
3:C:111:PHE:CE2	3:C:128:LEU:HD12	2.45	0.50
1:A:226:LEU:HD22	1:A:242:VAL:CG1	2.42	0.50
1:G:430:VAL:HG11	2:H:72(A):THR:CG2	2.41	0.50
1:A:428:GLN:OE1	1:A:428:GLN:N	2.37	0.50
3:C:4:MET:HE2	3:C:92:GLY:CA	2.41	0.50
3:L:143:VAL:HG13	3:L:184:VAL:O	2.12	0.50
2:B:100(A):ASP:N	2:B:100(A):ASP:OD1	2.45	0.49
3:C:179:TYR:CD1	3:C:185:TYR:CE1	2.99	0.49
1:G:258:GLN:NE2	1:G:370:ILE:O	2.46	0.49
2:H:85:ASP:OD1	2:H:85:ASP:N	2.45	0.49
3:L:6:GLN:HB3	3:L:93:PRO:HG2	1.95	0.49
3:L:29:TYR:O	3:L:87:VAL:HG23	2.13	0.49
1:A:212:PRO:HG2	4:D:1:NAG:C7	2.36	0.49
3:C:31:ASN:HB2	3:C:86:GLN:HG2	1.95	0.49
2:H:87:THR:HG22	2:H:111:VAL:H	1.77	0.49
2:B:6:GLN:HG2	2:B:22:CYS:SG	2.53	0.49
3:C:107:SER:CB	3:C:109:PHE:HE2	2.24	0.49
3:L:143:VAL:CG2	3:L:148:GLN:NE2	2.74	0.49
1:G:240:ASN:HD21	6:G:602:NAG:C7	2.24	0.49
2:H:145:TYR:CE1	2:H:150:VAL:CG2	2.96	0.49
2:B:180:SER:O	2:B:181:VAL:HG13	2.13	0.49

Continued on next page...

Continued from previous page...

Atom-1	Atom-2	Interatomic distance (Å)	Clash overlap (Å)
3:L:143:VAL:HG23	3:L:148:GLN:HG3	1.94	0.49
3:L:160:ASP:HB3	3:L:163:ASP:OD1	2.13	0.48
3:C:6:GLN:CG	3:C:23:CYS:HB2	2.43	0.48
1:A:297:THR:HG22	1:A:298:ARG:N	2.28	0.48
3:C:108:VAL:C	3:C:109:PHE:CD2	2.87	0.48
3:C:179:TYR:HE1	3:C:185:TYR:CD1	2.27	0.48
3:C:107:SER:CB	3:C:109:PHE:CE2	2.97	0.48
3:C:133:TYR:CD1	3:C:134:PRO:HA	2.49	0.48
3:C:80:ILE:O	3:C:80:ILE:HG13	2.13	0.47
3:L:143:VAL:O	3:L:146:ALA:HB3	2.13	0.47
1:A:279:ASP:OD2	2:B:95:ARG:NH2	2.45	0.47
3:C:80:ILE:O	3:C:80:ILE:CG1	2.61	0.47
3:C:110:ILE:HD13	3:C:202:PHE:HD2	1.80	0.47
2:H:6:GLN:OE1	2:H:106:GLY:N	2.40	0.47
3:L:143:VAL:HG23	3:L:148:GLN:HE21	1.78	0.47
1:A:86:LEU:HD23	1:A:89:VAL:HG11	1.96	0.47
3:L:13:ALA:O	3:L:100:LYS:N	2.47	0.47
1:G:219:ALA:HB2	1:G:225:ILE:HG13	1.97	0.47
1:G:282:LYS:NZ	2:H:98:ASP:OD1	2.46	0.47
2:B:178:LEU:HD12	2:B:179:SER:H	1.78	0.47
3:C:36:ARG:HA	3:C:81:ALA:HB1	1.95	0.47
1:G:197:ASN:OD1	1:G:198:THR:N	2.47	0.47
1:G:230:ASN:ND2	6:G:602:NAG:O7	2.47	0.47
1:A:123:THR:HG23	1:A:198:THR:H	1.80	0.47
3:C:117:GLN:O	3:C:120:SER:HB2	2.15	0.47
3:C:137:ALA:HB2	3:C:191:HIS:HD2	1.79	0.47
3:C:12:SER:HA	3:C:98:ASP:O	2.15	0.46
3:L:23:CYS:SG	3:L:30:LEU:HD11	2.55	0.46
3:L:135:ARG:HB2	3:L:166:TYR:CE1	2.50	0.46
2:H:45:LEU:HD12	3:L:91:PHE:CE2	2.51	0.46
3:C:163:ASP:OD1	3:C:165:THR:HG23	2.16	0.46
2:H:100(A):ASP:OD1	2:H:100(A):ASP:N	2.49	0.46
1:A:248:THR:HG21	1:A:486:TYR:HD2	1.79	0.46
2:B:35:TYR:OH	2:B:95:ARG:NH1	2.49	0.46
2:B:142:VAL:O	2:B:142:VAL:HG23	2.16	0.46
3:L:33:TYR:HE1	3:L:86:GLN:HG2	1.81	0.46
1:A:200:THR:HG21	1:G:202:THR:OG1	2.16	0.46
1:A:258:GLN:NE2	1:A:370:ILE:O	2.49	0.46
1:A:422:GLN:NE2	1:A:435:TYR:O	2.47	0.46
1:G:383:TYR:CE2	1:G:421:LYS:HB2	2.51	0.46
2:B:71:ARG:HH21	2:B:72(A):THR:HG23	1.81	0.46

Continued on next page...

Continued from previous page...

Atom-1	Atom-2	Interatomic distance (Å)	Clash overlap (Å)
2:B:154:TRP:CZ2	2:B:181:VAL:HA	2.51	0.46
2:B:165:THR:HG23	2:B:180:SER:HB2	1.98	0.46
1:A:442:GLN:HG2	1:A:444:THR:HG23	1.97	0.45
3:C:5:THR:O	3:C:23:CYS:HA	2.16	0.45
2:H:115:SER:O	2:H:116:THR:OG1	2.26	0.45
1:A:58:ALA:HB1	1:A:71:THR:HG23	1.97	0.45
5:E:1:NAG:H62	5:E:2:NAG:C7	2.46	0.45
2:B:119:PRO:HB3	2:B:145:TYR:HB3	1.99	0.45
2:B:185:PRO:HB2	2:B:188:SER:CB	2.47	0.45
3:C:6:GLN:CG	3:C:23:CYS:HB3	2.45	0.45
1:A:69:TRP:CD2	1:A:111:ILE:HG12	2.52	0.45
1:A:297:THR:HA	1:A:443:ILE:O	2.17	0.45
2:B:96:HIS:ND1	2:B:101:ASP:OD1	2.41	0.45
3:C:113:PRO:HD3	3:C:125:VAL:HG22	1.99	0.45
1:A:48:ALA:O	1:A:488:VAL:O	2.35	0.45
1:A:271:VAL:CG1	1:A:273:ARG:HE	2.29	0.45
1:A:271:VAL:HG11	1:A:273:ARG:NE	2.32	0.45
1:A:331:CYS:SG	1:A:384:CYS:SG	3.15	0.45
1:G:58:ALA:HB2	1:G:70:ALA:HB3	1.99	0.44
3:L:59:PHE:HD2	3:L:70:LEU:HD11	1.82	0.44
1:G:335:GLY:HA3	1:G:412:ALA:O	2.17	0.44
2:B:43:GLN:HG3	2:B:44:GLY:H	1.82	0.44
1:G:428:GLN:OE1	1:G:428:GLN:N	2.43	0.44
2:H:21:SER:HA	2:H:75:LEU:O	2.18	0.44
3:C:6:GLN:HB2	3:C:93:PRO:HD2	2.00	0.44
2:B:67:LEU:HD11	2:B:77:MET:SD	2.58	0.44
3:C:6:GLN:HB2	3:C:93:PRO:CG	2.48	0.44
3:C:179:TYR:CE1	3:C:185:TYR:CZ	3.01	0.44
3:L:133:TYR:CD1	3:L:134:PRO:HA	2.53	0.44
2:B:30:THR:HG23	2:B:53:LEU:HA	1.99	0.44
3:C:28:GLY:O	3:C:87:VAL:HG21	2.18	0.44
3:L:36:ARG:NH1	3:L:78:GLU:O	2.51	0.44
1:G:90:THR:HG22	1:G:240:ASN:HA	2.00	0.43
3:C:148:GLN:HB3	3:C:151:ASN:ND2	2.27	0.43
3:L:27:ALA:HB3	3:L:87:VAL:HG11	2.00	0.43
1:G:69:TRP:CD2	1:G:111:ILE:HG12	2.53	0.43
1:A:254:VAL:HG21	1:A:262:ASN:HB2	2.01	0.43
2:H:38:ARG:NH2	2:H:86:ASP:HA	2.33	0.43
2:H:72(C):ASP:HB3	2:H:74:MET:HG3	2.00	0.43
1:G:255:VAL:HG13	1:G:475:MET:SD	2.58	0.43
3:C:30:LEU:HA	3:C:86:GLN:O	2.18	0.43

Continued on next page...

Continued from previous page...

Atom-1	Atom-2	Interatomic distance (Å)	Clash overlap (Å)
3:C:110:ILE:HD13	3:C:202:PHE:CD2	2.54	0.43
3:L:32:TRP:CZ3	3:L:85:CYS:HB3	2.53	0.43
1:G:327:ARG:NH1	1:G:422:GLN:OE1	2.46	0.43
1:G:389:LEU:HD12	1:G:390:PHE:CD1	2.53	0.43
2:B:154:TRP:CH2	2:B:196:CYS:SG	3.12	0.43
2:H:122:PHE:HB3	3:L:114:SER:OG	2.19	0.43
1:G:268:GLU:O	1:G:289:GLN:NE2	2.52	0.43
3:C:25:THR:HG23	3:C:25:THR:O	2.19	0.43
1:G:462:THR:HG23	1:G:463:ASP:N	2.34	0.43
3:C:186:ALA:HA	3:C:201:SER:HB3	2.01	0.43
1:A:257:THR:O	1:A:259:LEU:N	2.48	0.42
1:G:389:LEU:CD2	1:G:416:LEU:HD21	2.49	0.42
2:B:65:GLY:O	2:B:80:ARG:NH2	2.51	0.42
3:C:131:ASN:OD1	3:C:165:THR:OG1	2.35	0.42
3:C:157:THR:HG22	3:C:158:GLU:N	2.35	0.42
3:L:11:LEU:HD21	3:L:19:VAL:HG13	2.00	0.42
1:G:331:CYS:SG	1:G:418:CYS:SG	3.17	0.42
3:C:28:GLY:O	3:C:87:VAL:CG2	2.67	0.42
3:L:179:TYR:O	3:L:185:TYR:OH	2.38	0.42
3:C:143:VAL:CG1	3:C:182:HIS:CB	2.97	0.42
1:A:123:THR:HG22	1:A:199:SER:OG	2.18	0.42
1:A:325:ASP:N	6:G:601:NAG:O4	2.53	0.42
2:B:145:TYR:CD2	2:B:150:VAL:CG2	3.03	0.42
3:L:2:ILE:HG13	3:L:27:ALA:HB2	2.01	0.42
2:B:83:ARG:O	2:B:111:VAL:HG11	2.20	0.42
3:L:30:LEU:HA	3:L:86:GLN:O	2.19	0.42
1:A:331:CYS:SG	1:A:418:CYS:SG	3.18	0.42
2:B:139:GLY:HA2	2:B:154:TRP:CH2	2.54	0.42
2:H:87:THR:CG2	2:H:111:VAL:H	2.33	0.42
3:L:36:ARG:HG2	3:L:81:ALA:HB2	2.01	0.42
3:C:63:ARG:CB	3:C:68:TYR:CD2	3.03	0.42
2:H:6:GLN:HG2	2:H:22:CYS:SG	2.59	0.42
3:L:137:ALA:HB2	3:L:191:HIS:HD2	1.84	0.42
1:G:277:LEU:HD13	1:G:352:HIS:HB3	2.01	0.42
2:H:119:PRO:HB2	2:H:142:VAL:HG13	2.02	0.42
3:L:99:LEU:HD23	3:L:99:LEU:HA	1.95	0.42
1:G:264:SER:OG	1:G:482:GLU:OE1	2.28	0.41
1:G:270:ILE:HD13	1:G:345:VAL:HG22	2.02	0.41
3:C:13:ALA:O	3:C:99:LEU:HA	2.20	0.41
2:B:55:SER:CB	2:B:71:ARG:HE	2.33	0.41
2:B:152:VAL:HA	2:B:197:ASN:O	2.20	0.41

Continued on next page...

Continued from previous page...

Atom-1	Atom-2	Interatomic distance (Å)	Clash overlap (Å)
1:A:120:VAL:HG12	1:A:122:LEU:HD22	2.02	0.41
2:B:150:VAL:HG22	2:B:200:HIS:HD2	1.85	0.41
2:B:166:PHE:O	2:B:178:LEU:HD11	2.20	0.41
1:A:52:LEU:HB3	1:A:218:CYS:O	2.20	0.41
2:B:142:VAL:HG23	2:B:178:LEU:HB3	2.03	0.41
2:B:164:HIS:CE1	3:C:130:ASN:OD1	2.74	0.41
2:H:24:ALA:HB1	2:H:27:TYR:CE1	2.56	0.41
1:A:265:LEU:HD21	1:A:289:GLN:HA	2.02	0.41
1:A:390:PHE:CD1	1:A:470:PRO:HG3	2.55	0.41
3:C:127:CYS:HB2	3:C:141:TRP:CH2	2.55	0.41
1:G:261:LEU:HD13	5:E:1:NAG:H82	2.02	0.41
3:C:51:LEU:HD23	3:C:52:VAL:O	2.21	0.41
2:B:123:PRO:HD2	3:C:114:SER:HB3	2.03	0.41
3:C:6:GLN:OE1	3:C:85:CYS:SG	2.79	0.41
3:C:21:ILE:HG22	3:C:22:THR:N	2.35	0.41
1:A:64:GLU:OE1	1:A:67:ASN:ND2	2.49	0.41
2:B:45:LEU:HD12	3:C:91:PHE:CE2	2.56	0.41
2:B:180:SER:O	2:B:181:VAL:CG1	2.68	0.41
3:C:166:TYR:CD2	3:C:166:TYR:N	2.89	0.41
1:A:300:ASN:OD1	1:A:301:ASN:N	2.54	0.41
1:A:338:TRP:CD1	1:A:394:ILE:HD13	2.56	0.41
2:B:125:ALA:O	3:C:111:PHE:HD1	2.04	0.41
3:C:2:ILE:CG1	3:C:27:ALA:CB	2.94	0.41
1:G:260:LEU:HD12	1:G:451:GLY:HA3	2.03	0.40
2:B:185:PRO:O	2:B:188:SER:HB3	2.21	0.40
4:D:1:NAG:H61	4:D:2:NAG:N2	2.36	0.40
2:H:145:TYR:CD1	2:H:150:VAL:CG2	3.04	0.40
2:B:45:LEU:HD12	3:C:91:PHE:CD2	2.56	0.40
2:B:145:TYR:CD2	2:B:150:VAL:HG21	2.56	0.40
2:B:55:SER:HB3	2:B:71:ARG:HE	1.87	0.40
2:H:117:LYS:HG2	2:H:144:ASP:O	2.22	0.40
2:B:138:LEU:HB2	2:B:211:VAL:HG11	2.03	0.40
3:L:63:ARG:HG3	3:L:64:TRP:N	2.36	0.40

There are no symmetry-related clashes.

5.3 Torsion angles [i](#)

5.3.1 Protein backbone [i](#)

In the following table, the Percentiles column shows the percent Ramachandran outliers of the chain as a percentile score with respect to all X-ray entries followed by that with respect to entries of similar resolution.

The Analysed column shows the number of residues for which the backbone conformation was analysed, and the total number of residues.

Mol	Chain	Analysed	Favoured	Allowed	Outliers	Percentiles	
1	A	338/353 (96%)	329 (97%)	9 (3%)	0	100	100
1	G	335/353 (95%)	328 (98%)	7 (2%)	0	100	100
2	B	196/225 (87%)	190 (97%)	5 (3%)	1 (0%)	29	68
2	H	209/225 (93%)	203 (97%)	6 (3%)	0	100	100
3	C	204/207 (99%)	201 (98%)	3 (2%)	0	100	100
3	L	204/207 (99%)	200 (98%)	4 (2%)	0	100	100
All	All	1486/1570 (95%)	1451 (98%)	34 (2%)	1 (0%)	51	85

All (1) Ramachandran outliers are listed below:

Mol	Chain	Res	Type
2	B	123	PRO

5.3.2 Protein sidechains [i](#)

In the following table, the Percentiles column shows the percent sidechain outliers of the chain as a percentile score with respect to all X-ray entries followed by that with respect to entries of similar resolution.

The Analysed column shows the number of residues for which the sidechain conformation was analysed, and the total number of residues.

Mol	Chain	Analysed	Rotameric	Outliers	Percentiles	
1	A	260/313 (83%)	258 (99%)	2 (1%)	81	93
1	G	271/313 (87%)	270 (100%)	1 (0%)	91	97
2	B	155/195 (80%)	155 (100%)	0	100	100
2	H	181/195 (93%)	180 (99%)	1 (1%)	86	95
3	C	142/182 (78%)	140 (99%)	2 (1%)	67	88
3	L	169/182 (93%)	168 (99%)	1 (1%)	86	95

Continued on next page...

Continued from previous page...

Mol	Chain	Analysed	Rotameric	Outliers	Percentiles	
All	All	1178/1380 (85%)	1171 (99%)	7 (1%)	86	95

All (7) residues with a non-rotameric sidechain are listed below:

Mol	Chain	Res	Type
1	A	273	ARG
1	A	280	ASN
1	G	385	ASN
3	C	23	CYS
3	C	85	CYS
2	H	71	ARG
3	L	23	CYS

Sometimes sidechains can be flipped to improve hydrogen bonding and reduce clashes. All (4) such sidechains are listed below:

Mol	Chain	Res	Type
2	B	43	GLN
2	B	164	HIS
3	C	159	GLN
3	L	148	GLN

5.3.3 RNA [i](#)

There are no RNA molecules in this entry.

5.4 Non-standard residues in protein, DNA, RNA chains [i](#)

There are no non-standard protein/DNA/RNA residues in this entry.

5.5 Carbohydrates [i](#)

10 monosaccharides are modelled in this entry.

In the following table, the Counts columns list the number of bonds (or angles) for which Mogul statistics could be retrieved, the number of bonds (or angles) that are observed in the model and the number of bonds (or angles) that are defined in the Chemical Component Dictionary. The Link column lists molecule types, if any, to which the group is linked. The Z score for a bond length (or angle) is the number of standard deviations the observed value is removed from the expected value. A bond length (or angle) with $|Z| > 2$ is considered an outlier worth inspection. RMSZ is the root-mean-square of all Z scores of the bond lengths (or angles).

Mol	Type	Chain	Res	Link	Bond lengths			Bond angles		
					Counts	RMSZ	# Z > 2	Counts	RMSZ	# Z > 2
4	NAG	D	1	1,4	14,14,15	1.46	3 (21%)	17,19,21	0.90	0
4	NAG	D	2	4	14,14,15	1.34	3 (21%)	17,19,21	1.01	0
4	BMA	D	3	4	11,11,12	1.46	2 (18%)	15,15,17	1.28	1 (6%)
4	MAN	D	4	4	11,11,12	1.56	2 (18%)	15,15,17	1.05	1 (6%)
4	MAN	D	5	4	11,11,12	1.37	2 (18%)	15,15,17	1.51	1 (6%)
4	MAN	D	6	4	11,11,12	1.45	2 (18%)	15,15,17	1.01	2 (13%)
5	NAG	E	1	1,5	14,14,15	0.66	1 (7%)	17,19,21	0.52	0
5	NAG	E	2	5	14,14,15	0.34	0	17,19,21	0.42	0
5	BMA	E	3	5	11,11,12	0.68	0	15,15,17	0.94	1 (6%)
5	MAN	E	4	5	11,11,12	0.68	0	15,15,17	1.13	2 (13%)

In the following table, the Chirals column lists the number of chiral outliers, the number of chiral centers analysed, the number of these observed in the model and the number defined in the Chemical Component Dictionary. Similar counts are reported in the Torsion and Rings columns. '-' means no outliers of that kind were identified.

Mol	Type	Chain	Res	Link	Chirals	Torsions	Rings
4	NAG	D	1	1,4	-	2/6/23/26	0/1/1/1
4	NAG	D	2	4	-	0/6/23/26	0/1/1/1
4	BMA	D	3	4	-	0/2/19/22	0/1/1/1
4	MAN	D	4	4	-	0/2/19/22	0/1/1/1
4	MAN	D	5	4	-	2/2/19/22	0/1/1/1
4	MAN	D	6	4	-	0/2/19/22	0/1/1/1
5	NAG	E	1	1,5	-	0/6/23/26	0/1/1/1
5	NAG	E	2	5	-	2/6/23/26	0/1/1/1
5	BMA	E	3	5	-	0/2/19/22	0/1/1/1
5	MAN	E	4	5	-	1/2/19/22	0/1/1/1

All (15) bond length outliers are listed below:

Mol	Chain	Res	Type	Atoms	Z	Observed(Å)	Ideal(Å)
4	D	4	MAN	O5-C1	3.58	1.49	1.43
4	D	6	MAN	C2-C3	-3.23	1.47	1.52
4	D	3	BMA	O5-C1	3.08	1.48	1.43
4	D	4	MAN	C2-C3	-2.88	1.48	1.52
4	D	3	BMA	C2-C3	-2.85	1.48	1.52
4	D	5	MAN	O5-C1	2.82	1.48	1.43
4	D	6	MAN	O5-C1	2.62	1.47	1.43
4	D	5	MAN	C2-C3	-2.46	1.48	1.52

Continued on next page...

Continued from previous page...

Mol	Chain	Res	Type	Atoms	Z	Observed(Å)	Ideal(Å)
4	D	2	NAG	C7-N2	2.41	1.42	1.34
4	D	1	NAG	C7-N2	2.38	1.42	1.34
4	D	1	NAG	O7-C7	2.21	1.28	1.23
4	D	1	NAG	O5-C1	2.08	1.47	1.43
4	D	2	NAG	O7-C7	2.04	1.27	1.23
4	D	2	NAG	O5-C1	2.03	1.47	1.43
5	E	1	NAG	O5-C1	-2.02	1.40	1.43

All (8) bond angle outliers are listed below:

Mol	Chain	Res	Type	Atoms	Z	Observed(°)	Ideal(°)
4	D	5	MAN	C1-C2-C3	4.72	115.47	109.67
5	E	4	MAN	C1-O5-C5	3.25	116.60	112.19
4	D	3	BMA	C1-O5-C5	-3.11	107.97	112.19
5	E	4	MAN	O2-C2-C3	-2.27	105.59	110.14
4	D	4	MAN	C1-O5-C5	2.22	115.20	112.19
4	D	6	MAN	C1-C2-C3	2.22	112.39	109.67
4	D	6	MAN	O3-C3-C2	-2.17	105.84	109.99
5	E	3	BMA	C1-C2-C3	2.14	112.29	109.67

There are no chirality outliers.

All (7) torsion outliers are listed below:

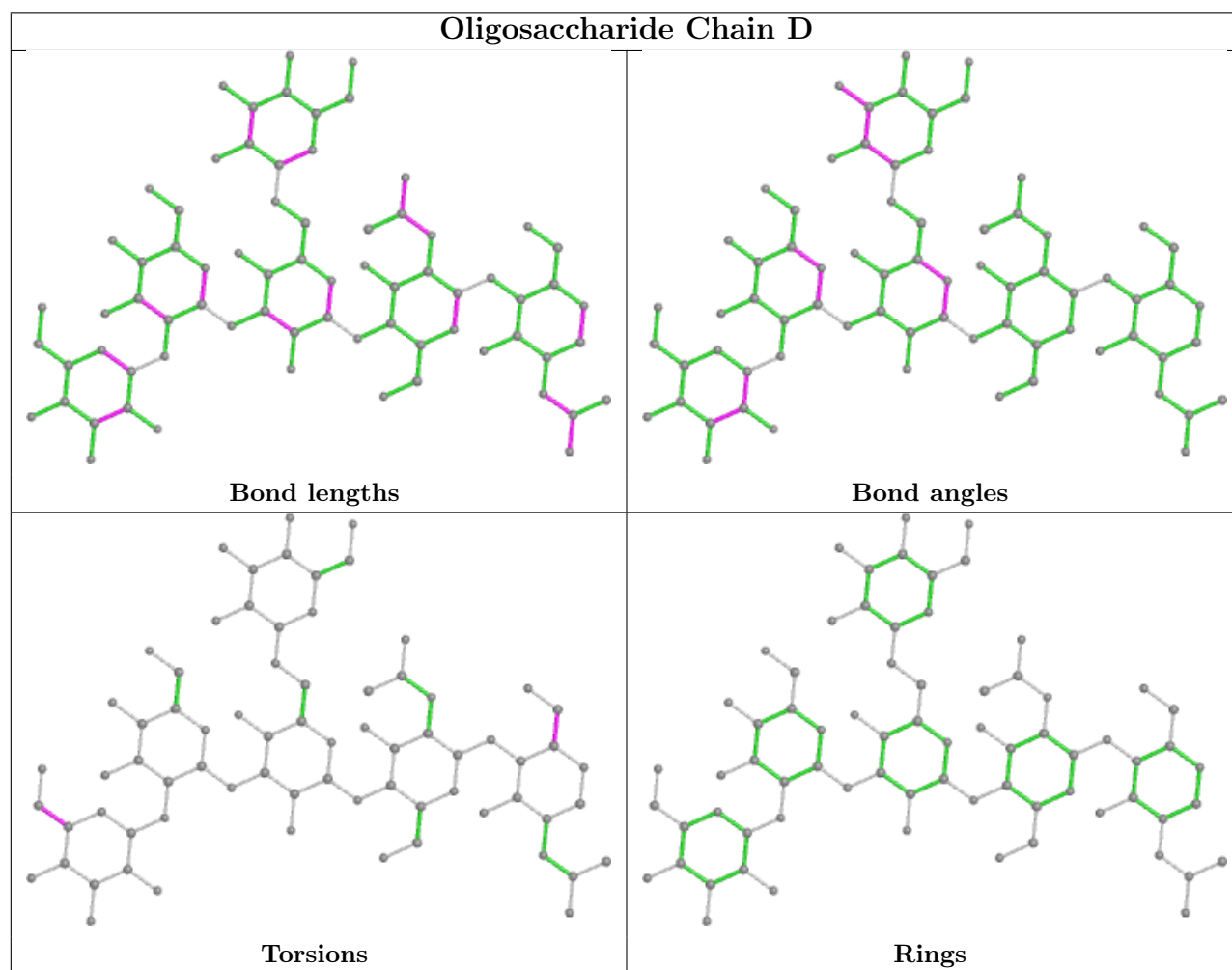
Mol	Chain	Res	Type	Atoms
4	D	1	NAG	O5-C5-C6-O6
4	D	1	NAG	C4-C5-C6-O6
4	D	5	MAN	O5-C5-C6-O6
4	D	5	MAN	C4-C5-C6-O6
5	E	2	NAG	O5-C5-C6-O6
5	E	4	MAN	O5-C5-C6-O6
5	E	2	NAG	C4-C5-C6-O6

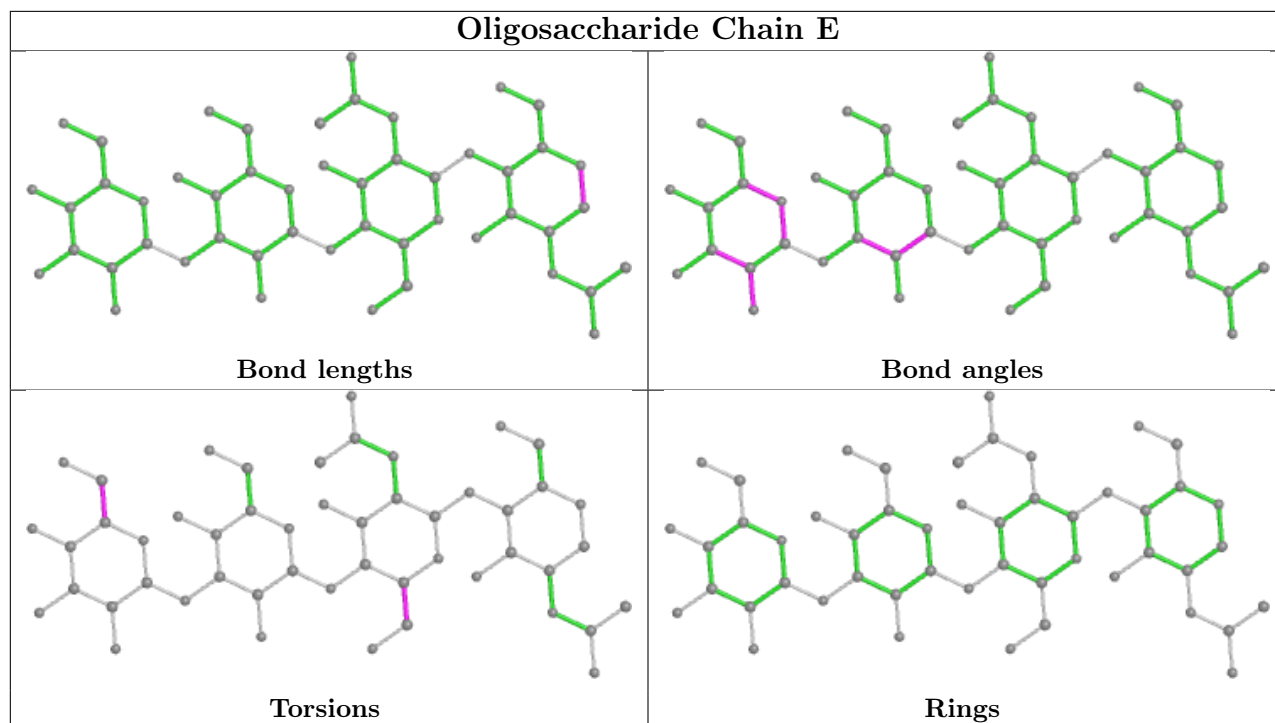
There are no ring outliers.

4 monomers are involved in 9 short contacts:

Mol	Chain	Res	Type	Clashes	Symm-Clashes
5	E	2	NAG	1	0
4	D	2	NAG	1	0
5	E	1	NAG	3	0
4	D	1	NAG	6	0

The following is a two-dimensional graphical depiction of Mogul quality analysis of bond lengths, bond angles, torsion angles, and ring geometry for oligosaccharide.





5.6 Ligand geometry [i](#)

14 ligands are modelled in this entry.

In the following table, the Counts columns list the number of bonds (or angles) for which Mogul statistics could be retrieved, the number of bonds (or angles) that are observed in the model and the number of bonds (or angles) that are defined in the Chemical Component Dictionary. The Link column lists molecule types, if any, to which the group is linked. The Z score for a bond length (or angle) is the number of standard deviations the observed value is removed from the expected value. A bond length (or angle) with $|Z| > 2$ is considered an outlier worth inspection. RMSZ is the root-mean-square of all Z scores of the bond lengths (or angles).

Mol	Type	Chain	Res	Link	Bond lengths			Bond angles		
					Counts	RMSZ	# $ Z > 2$	Counts	RMSZ	# $ Z > 2$
6	NAG	C	301	3	14,14,15	0.37	0	17,19,21	0.48	0
7	EDO	A	607	-	3,3,3	0.48	0	2,2,2	0.04	0
8	PGE	G	604	-	9,9,9	0.31	0	8,8,8	0.28	0
6	NAG	A	601	1	14,14,15	0.34	0	17,19,21	0.52	0
7	EDO	A	606	-	3,3,3	0.48	0	2,2,2	0.27	0
6	NAG	G	602	1	14,14,15	0.66	1 (7%)	17,19,21	0.79	1 (5%)
6	NAG	L	301	3	14,14,15	0.18	0	17,19,21	0.48	0
6	NAG	G	601	1	14,14,15	0.50	0	17,19,21	0.36	0
6	NAG	A	604	1	14,14,15	0.25	0	17,19,21	0.60	1 (5%)
6	NAG	A	603	1	14,14,15	0.38	0	17,19,21	0.64	1 (5%)
6	NAG	A	602	1	14,14,15	0.24	0	17,19,21	0.64	1 (5%)

Mol	Type	Chain	Res	Link	Bond lengths			Bond angles		
					Counts	RMSZ	# Z > 2	Counts	RMSZ	# Z > 2
7	EDO	G	605	-	3,3,3	0.53	0	2,2,2	0.21	0
6	NAG	A	605	1	14,14,15	0.31	0	17,19,21	0.53	0
6	NAG	G	603	1	14,14,15	0.27	0	17,19,21	0.46	0

In the following table, the Chirals column lists the number of chiral outliers, the number of chiral centers analysed, the number of these observed in the model and the number defined in the Chemical Component Dictionary. Similar counts are reported in the Torsion and Rings columns. '-' means no outliers of that kind were identified.

Mol	Type	Chain	Res	Link	Chirals	Torsions	Rings
6	NAG	C	301	3	-	0/6/23/26	0/1/1/1
7	EDO	A	607	-	-	0/1/1/1	-
8	PGE	G	604	-	-	4/7/7/7	-
6	NAG	A	601	1	-	0/6/23/26	0/1/1/1
7	EDO	A	606	-	-	0/1/1/1	-
6	NAG	G	602	1	-	2/6/23/26	0/1/1/1
6	NAG	L	301	3	-	1/6/23/26	0/1/1/1
6	NAG	G	601	1	-	1/6/23/26	0/1/1/1
6	NAG	A	604	1	-	2/6/23/26	0/1/1/1
6	NAG	A	603	1	-	2/6/23/26	0/1/1/1
6	NAG	A	602	1	-	0/6/23/26	0/1/1/1
7	EDO	G	605	-	-	1/1/1/1	-
6	NAG	A	605	1	-	2/6/23/26	0/1/1/1
6	NAG	G	603	1	-	0/6/23/26	0/1/1/1

All (1) bond length outliers are listed below:

Mol	Chain	Res	Type	Atoms	Z	Observed(Å)	Ideal(Å)
6	G	602	NAG	C1-C2	2.28	1.55	1.52

All (4) bond angle outliers are listed below:

Mol	Chain	Res	Type	Atoms	Z	Observed(°)	Ideal(°)
6	G	602	NAG	C1-O5-C5	2.36	115.39	112.19
6	A	602	NAG	C1-O5-C5	2.22	115.20	112.19
6	A	603	NAG	C1-O5-C5	2.10	115.04	112.19
6	A	604	NAG	C1-O5-C5	2.01	114.91	112.19

There are no chirality outliers.

All (15) torsion outliers are listed below:

Mol	Chain	Res	Type	Atoms
6	G	602	NAG	C3-C2-N2-C7
6	A	604	NAG	O5-C5-C6-O6
8	G	604	PGE	O3-C5-C6-O4
6	A	604	NAG	C4-C5-C6-O6
6	A	605	NAG	O5-C5-C6-O6
6	A	603	NAG	O5-C5-C6-O6
6	A	605	NAG	C4-C5-C6-O6
8	G	604	PGE	C1-C2-O2-C3
8	G	604	PGE	C3-C4-O3-C5
6	L	301	NAG	O5-C5-C6-O6
6	G	601	NAG	C4-C5-C6-O6
7	G	605	EDO	O1-C1-C2-O2
6	A	603	NAG	C4-C5-C6-O6
6	G	602	NAG	C1-C2-N2-C7
8	G	604	PGE	C4-C3-O2-C2

There are no ring outliers.

3 monomers are involved in 4 short contacts:

Mol	Chain	Res	Type	Clashes	Symm-Clashes
7	A	606	EDO	1	0
6	G	602	NAG	2	0
6	G	601	NAG	1	0

5.7 Other polymers [i](#)

There are no such residues in this entry.

5.8 Polymer linkage issues [i](#)

There are no chain breaks in this entry.

6 Fit of model and data

6.1 Protein, DNA and RNA chains

In the following table, the column labelled ‘#RSRZ > 2’ contains the number (and percentage) of RSRZ outliers, followed by percent RSRZ outliers for the chain as percentile scores relative to all X-ray entries and entries of similar resolution. The OWAB column contains the minimum, median, 95th percentile and maximum values of the occupancy-weighted average B-factor per residue. The column labelled ‘Q < 0.9’ lists the number of (and percentage) of residues with an average occupancy less than 0.9.

Mol	Chain	Analysed	<RSRZ>	#RSRZ>2	OWAB(Å ²)	Q<0.9
1	A	340/353 (96%)	-0.12	7 (2%) 63 34	45, 67, 112, 143	0
1	G	339/353 (96%)	-0.25	1 (0%) 94 84	41, 63, 90, 122	0
2	B	202/225 (89%)	-0.01	3 (1%) 73 46	54, 78, 120, 137	0
2	H	213/225 (94%)	-0.34	1 (0%) 91 75	37, 56, 76, 409	0
3	C	206/207 (99%)	0.14	3 (1%) 73 46	57, 85, 116, 128	0
3	L	206/207 (99%)	-0.15	3 (1%) 73 46	42, 67, 102, 116	0
All	All	1506/1570 (95%)	-0.13	18 (1%) 79 54	37, 68, 111, 409	0

All (18) RSRZ outliers are listed below:

Mol	Chain	Res	Type	RSRZ
2	H	77	MET	4.0
2	B	114	ALA	2.9
1	A	462	THR	2.6
2	B	185	PRO	2.6
1	G	58	ALA	2.4
3	L	74	SER	2.3
3	L	146	ALA	2.3
1	A	256	SER	2.3
3	C	178	ASP	2.3
1	A	240	ASN	2.3
2	B	187	SER	2.3
1	A	50	THR	2.2
1	A	222	GLY	2.2
1	A	87	GLU	2.2
3	C	73	GLY	2.1
3	L	144	ASP	2.0
1	A	223	TYR	2.0
3	C	16	GLY	2.0

6.2 Non-standard residues in protein, DNA, RNA chains [i](#)

There are no non-standard protein/DNA/RNA residues in this entry.

6.3 Carbohydrates [i](#)

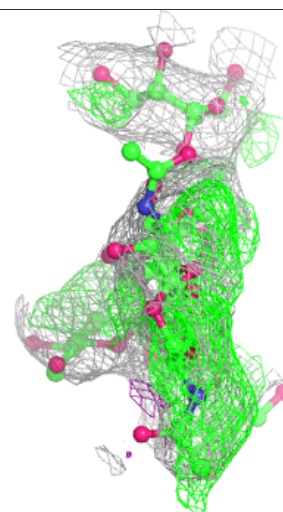
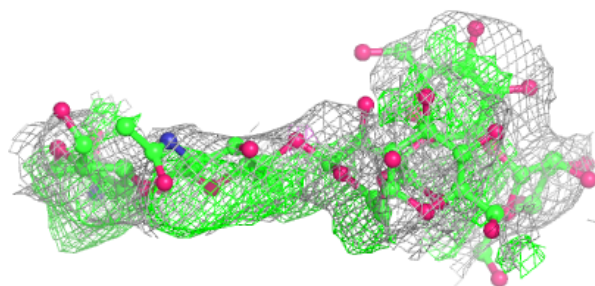
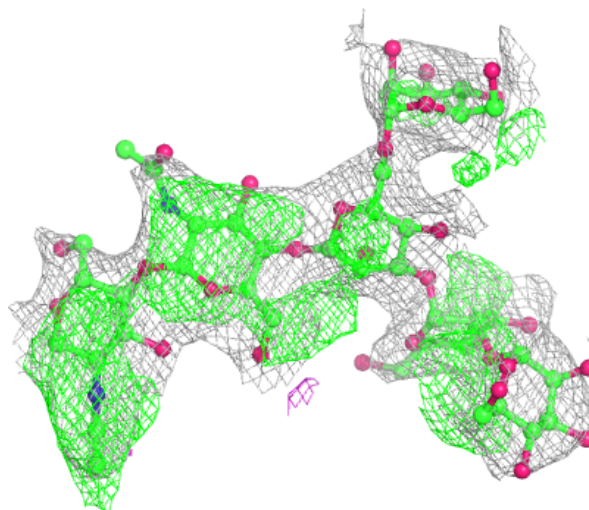
In the following table, the Atoms column lists the number of modelled atoms in the group and the number defined in the chemical component dictionary. The B-factors column lists the minimum, median, 95th percentile and maximum values of B factors of atoms in the group. The column labelled 'Q< 0.9' lists the number of atoms with occupancy less than 0.9.

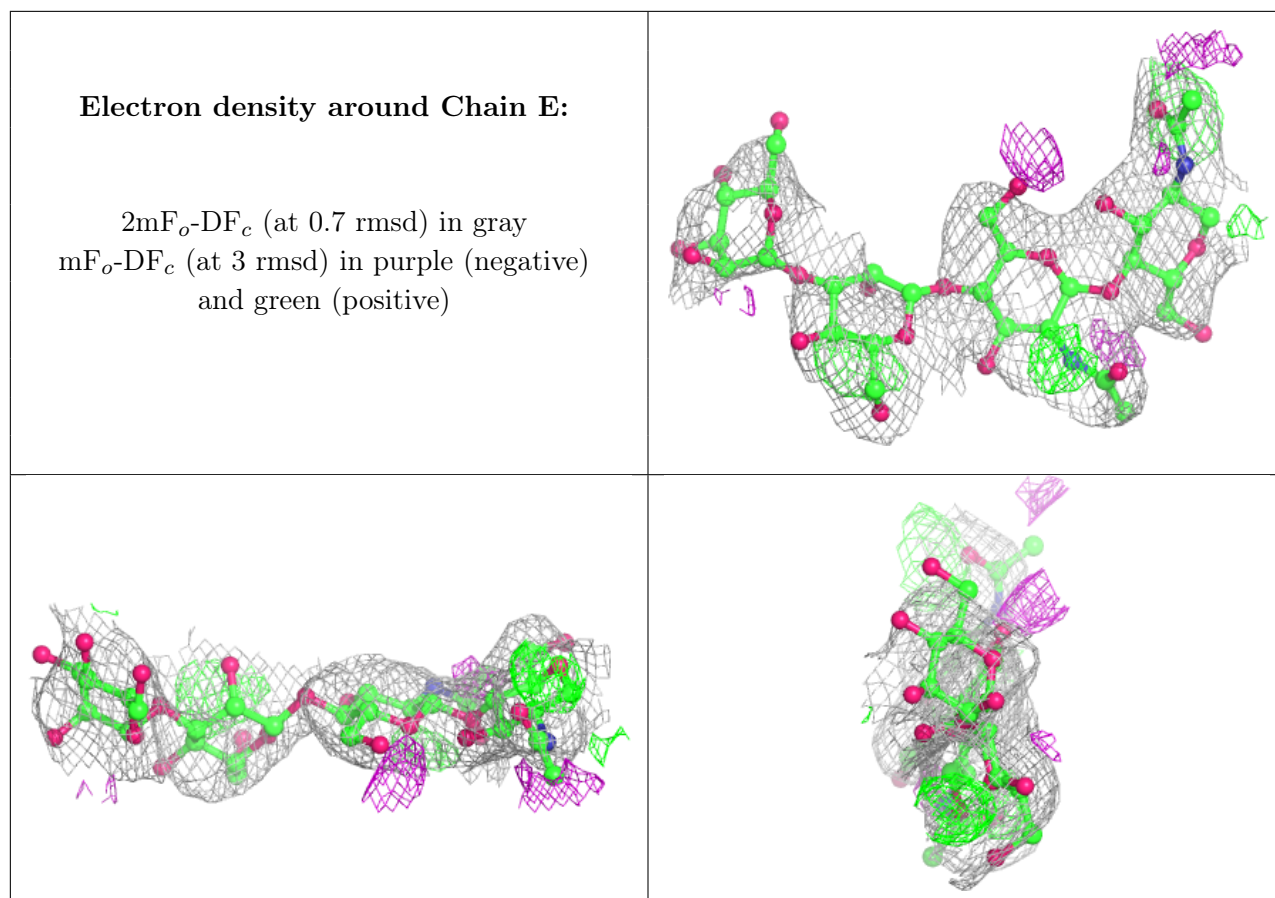
Mol	Type	Chain	Res	Atoms	RSCC	RSR	B-factors(Å ²)	Q<0.9
5	BMA	E	3	11/12	0.59	0.36	117,122,132,140	0
4	NAG	D	2	14/15	0.62	0.47	48,52,61,62	14
4	NAG	D	1	14/15	0.68	0.58	44,56,59,65	14
5	NAG	E	2	14/15	0.70	0.26	87,93,110,120	0
4	MAN	D	6	11/12	0.71	0.23	57,61,67,68	11
4	BMA	D	3	11/12	0.74	0.19	53,60,62,68	11
4	MAN	D	5	11/12	0.81	0.26	58,61,66,68	11
5	MAN	E	4	11/12	0.82	0.39	122,134,139,139	0
5	NAG	E	1	14/15	0.85	0.25	67,74,84,91	0
4	MAN	D	4	11/12	0.88	0.18	55,57,61,70	11

The following is a graphical depiction of the model fit to experimental electron density for oligosaccharide. Each fit is shown from different orientation to approximate a three-dimensional view.

Electron density around Chain D:

$2mF_o-DF_c$ (at 0.7 rmsd) in gray
 mF_o-DF_c (at 3 rmsd) in purple (negative)
and green (positive)





6.4 Ligands [i](#)

In the following table, the Atoms column lists the number of modelled atoms in the group and the number defined in the chemical component dictionary. The B-factors column lists the minimum, median, 95th percentile and maximum values of B factors of atoms in the group. The column labelled 'Q< 0.9' lists the number of atoms with occupancy less than 0.9.

Mol	Type	Chain	Res	Atoms	RSCC	RSR	B-factors(Å ²)	Q<0.9
6	NAG	A	602	14/15	0.64	0.47	131,147,153,153	0
6	NAG	A	605	14/15	0.72	0.53	99,119,127,128	14
7	EDO	G	605	4/4	0.76	0.76	67,69,77,120	0
6	NAG	A	601	14/15	0.78	0.31	104,114,126,134	0
6	NAG	G	602	14/15	0.80	0.40	76,90,104,105	14
6	NAG	G	603	14/15	0.80	0.51	81,103,107,108	14
6	NAG	A	603	14/15	0.80	0.28	102,109,114,114	0
6	NAG	C	301	14/15	0.81	0.34	90,104,107,111	0
6	NAG	G	601	14/15	0.82	0.26	74,81,97,103	0
6	NAG	L	301	14/15	0.83	0.22	60,82,162,177	0
8	PGE	G	604	10/10	0.84	0.17	66,74,77,78	0
6	NAG	A	604	14/15	0.89	0.20	50,61,73,73	0
7	EDO	A	606	4/4	0.90	0.46	46,54,57,59	0

Continued on next page...

Continued from previous page...

Mol	Type	Chain	Res	Atoms	RSCC	RSR	B-factors(\AA^2)	Q<0.9
7	EDO	A	607	4/4	0.92	0.20	50,52,55,58	4

6.5 Other polymers [i](#)

There are no such residues in this entry.