



# Full wwPDB X-ray Structure Validation Report ⓘ

May 17, 2020 – 08:06 am BST

PDB ID : 3IAW  
Title : Crystal structure of a chemically synthesized 203 amino acid 'covalent dimer' [Gly51;Aib51']HIV-1 protease molecule complexed with MVT-101 reduced isostere inhibitor at 1.6 Å resolution  
Authors : Torbeev, V.Y.; Kent, S.B.H.  
Deposited on : 2009-07-14  
Resolution : 1.61 Å(reported)

This is a Full wwPDB X-ray Structure Validation Report for a publicly released PDB entry.

We welcome your comments at [validation@mail.wwpdb.org](mailto:validation@mail.wwpdb.org)

A user guide is available at

<https://www.wwpdb.org/validation/2017/XrayValidationReportHelp>

with specific help available everywhere you see the ⓘ symbol.

---

The following versions of software and data (see [references ⓘ](#)) were used in the production of this report:

MolProbity : 4.02b-467  
Mogul : 1.8.5 (274361), CSD as541be (2020)  
Xtriage (Phenix) : 1.13  
EDS : 2.11  
buster-report : 1.1.7 (2018)  
Percentile statistics : 20191225.v01 (using entries in the PDB archive December 25th 2019)  
Refmac : 5.8.0158  
CCP4 : 7.0.044 (Gargrove)  
Ideal geometry (proteins) : Engh & Huber (2001)  
Ideal geometry (DNA, RNA) : Parkinson et al. (1996)  
Validation Pipeline (wwPDB-VP) : 2.11

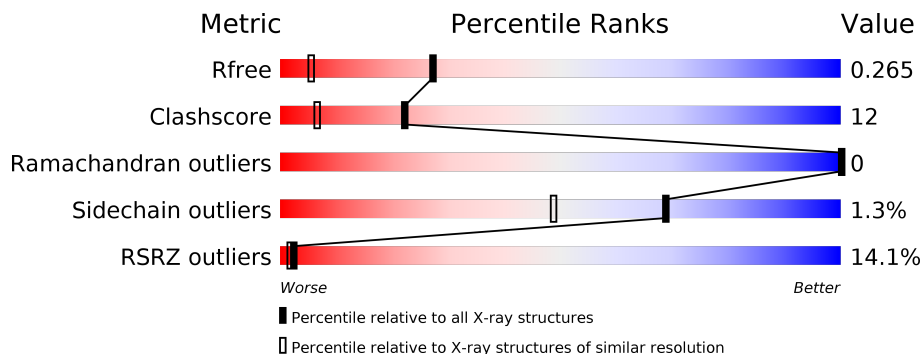
# 1 Overall quality at a glance

The following experimental techniques were used to determine the structure:

*X-RAY DIFFRACTION*

The reported resolution of this entry is 1.61 Å.

Percentile scores (ranging between 0-100) for global validation metrics of the entry are shown in the following graphic. The table shows the number of entries on which the scores are based.



Metric	Whole archive (#Entries)	Similar resolution (#Entries, resolution range(Å))
$R_{free}$	130704	4693 (1.64-1.60)
Clashscore	141614	5002 (1.64-1.60)
Ramachandran outliers	138981	4888 (1.64-1.60)
Sidechain outliers	138945	4887 (1.64-1.60)
RSRZ outliers	127900	4609 (1.64-1.60)

The table below summarises the geometric issues observed across the polymeric chains and their fit to the electron density. The red, orange, yellow and green segments on the lower bar indicate the fraction of residues that contain outliers for  $\geq 3$ , 2, 1 and 0 types of geometric quality criteria respectively. A grey segment represents the fraction of residues that are not modelled. The numeric value for each fraction is indicated below the corresponding segment, with a dot representing fractions  $\leq 5\%$ . The upper red bar (where present) indicates the fraction of residues that have poor fit to the electron density. The numeric value is given above the bar.

Mol	Chain	Length	Quality of chain
1	A	203	

The following table lists non-polymeric compounds, carbohydrate monomers and non-standard residues in protein, DNA, RNA chains that are outliers for geometric or electron-density-fit criteria:

Mol	Type	Chain	Res	Chirality	Geometry	Clashes	Electron density
1	YCM	A	100	-	-	X	-
1	YCM	A	145	-	-	-	X

*Continued on next page...*

*Continued from previous page...*

<b>Mol</b>	<b>Type</b>	<b>Chain</b>	<b>Res</b>	<b>Chirality</b>	<b>Geometry</b>	<b>Clashes</b>	<b>Electron density</b>
1	AIB	A	155[A]	-	-	X	-
1	YCM	A	41	-	-	-	X

## 2 Entry composition [i](#)

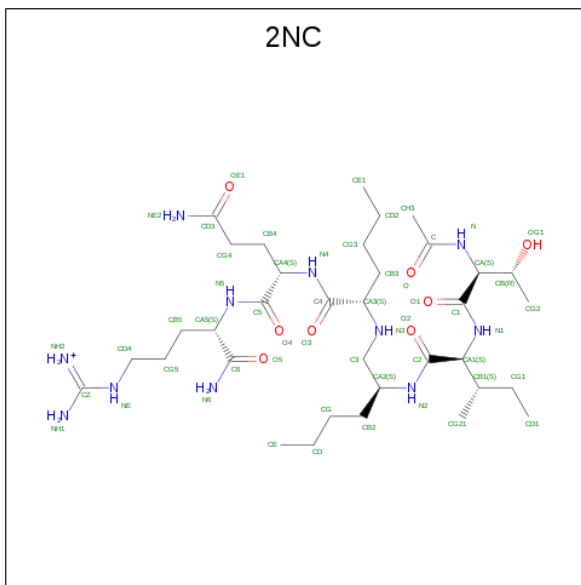
There are 4 unique types of molecules in this entry. The entry contains 1782 atoms, of which 0 are hydrogens and 0 are deuteriums.

In the tables below, the ZeroOcc column contains the number of atoms modelled with zero occupancy, the AltConf column contains the number of residues with at least one atom in alternate conformation and the Trace column contains the number of residues modelled with at most 2 atoms.

- Molecule 1 is a protein called [Gly51;Aib51] 'covalent dimer' HIV-1 protease.

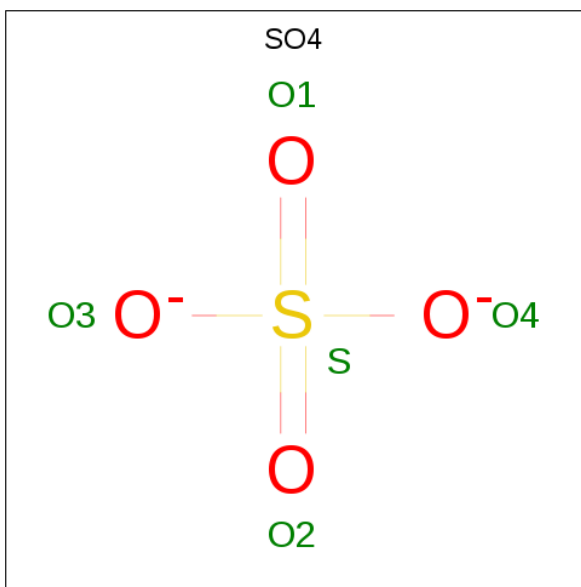
Mol	Chain	Residues	Atoms					ZeroOcc	AltConf	Trace
			Total	C	N	O	S			
1	A	203	1583	1023	275	282	3	0	7	0

- Molecule 2 is N-((2S)-2-[(N-acetyl-L-threonyl-L-isoleucyl)amino]hexyl)-L-norleucyl-L-glutamyl-N<sup>5</sup>-[amino(iminio)methyl]-L-ornithinamide (three-letter code: 2NC) (formula: C<sub>35</sub>H<sub>68</sub>N<sub>11</sub>O<sub>8</sub>).



Mol	Chain	Residues	Atoms				ZeroOcc	AltConf
			Total	C	N	O		
2	A	1	108	70	22	16	0	1

- Molecule 3 is SULFATE ION (three-letter code: SO<sub>4</sub>) (formula: O<sub>4</sub>S).



Mol	Chain	Residues	Atoms			ZeroOcc	AltConf
3	A	1	Total	O	S	0	0
			5	4	1		

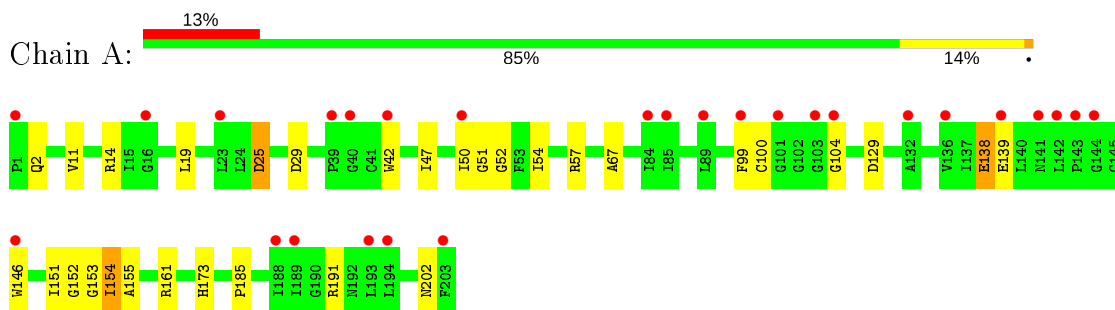
- Molecule 4 is water.

Mol	Chain	Residues	Atoms		ZeroOcc	AltConf
4	A	86	Total	O	0	0
			86	86		

### 3 Residue-property plots [i](#)

These plots are drawn for all protein, RNA and DNA chains in the entry. The first graphic for a chain summarises the proportions of the various outlier classes displayed in the second graphic. The second graphic shows the sequence view annotated by issues in geometry and electron density. Residues are color-coded according to the number of geometric quality criteria for which they contain at least one outlier: green = 0, yellow = 1, orange = 2 and red = 3 or more. A red dot above a residue indicates a poor fit to the electron density ( $RSRZ > 2$ ). Stretches of 2 or more consecutive residues without any outlier are shown as a green connector. Residues present in the sample, but not in the model, are shown in grey.

- Molecule 1: [Gly51;Aib51]' covalent dimer' HIV-1 protease



## 4 Data and refinement statistics

Property	Value	Source
Space group	P 21 21 21	Depositor
Cell constants a, b, c, $\alpha$ , $\beta$ , $\gamma$	51.54Å 57.99Å 61.07Å 90.00° 90.00° 90.00°	Depositor
Resolution (Å)	20.00 – 1.61 25.27 – 1.61	Depositor EDS
% Data completeness (in resolution range)	97.5 (20.00-1.61) 97.4 (25.27-1.61)	Depositor EDS
$R_{merge}$	0.08	Depositor
$R_{sym}$	(Not available)	Depositor
$\langle I/\sigma(I) \rangle$ <sup>1</sup>	5.37 (at 1.61Å)	Xtriage
Refinement program	REFMAC 5.2.0019	Depositor
R, $R_{free}$	0.197 , 0.224 0.240 , 0.265	Depositor DCC
$R_{free}$ test set	1224 reflections (5.12%)	wwPDB-VP
Wilson B-factor (Å <sup>2</sup> )	23.7	Xtriage
Anisotropy	0.050	Xtriage
Bulk solvent $k_{sol}$ (e/Å <sup>3</sup> ), $B_{sol}$ (Å <sup>2</sup> )	0.38 , 71.8	EDS
L-test for twinning <sup>2</sup>	$\langle  L  \rangle = 0.48$ , $\langle L^2 \rangle = 0.31$	Xtriage
Estimated twinning fraction	0.026 for -h,l,k	Xtriage
$F_o, F_c$ correlation	0.95	EDS
Total number of atoms	1782	wwPDB-VP
Average B, all atoms (Å <sup>2</sup> )	29.0	wwPDB-VP

Xtriage's analysis on translational NCS is as follows: *The largest off-origin peak in the Patterson function is 11.25% of the height of the origin peak. No significant pseudotranslation is detected.*

<sup>1</sup> Intensities estimated from amplitudes.

<sup>2</sup> Theoretical values of  $\langle |L| \rangle$ ,  $\langle L^2 \rangle$  for acentric reflections are 0.5, 0.333 respectively for untwinned datasets, and 0.375, 0.2 for perfectly twinned datasets.

## 5 Model quality [i](#)

### 5.1 Standard geometry [i](#)

Bond lengths and bond angles in the following residue types are not validated in this section: ABA, 2NC, NLE, SO4, YCM, AIB

The Z score for a bond length (or angle) is the number of standard deviations the observed value is removed from the expected value. A bond length (or angle) with  $|Z| > 5$  is considered an outlier worth inspection. RMSZ is the root-mean-square of all Z scores of the bond lengths (or angles).

Mol	Chain	Bond lengths		Bond angles	
		RMSZ	# Z  >5	RMSZ	# Z  >5
1	A	0.73	0/1503	0.85	3/2024 (0.1%)

There are no bond length outliers.

All (3) bond angle outliers are listed below:

Mol	Chain	Res	Type	Atoms	Z	Observed(°)	Ideal(°)
1	A	25	ASP	CB-CG-OD1	5.98	123.68	118.30
1	A	191	ARG	NE-CZ-NH2	-5.42	117.59	120.30
1	A	191	ARG	NE-CZ-NH1	5.30	122.95	120.30

There are no chirality outliers.

There are no planarity outliers.

### 5.2 Too-close contacts [i](#)

In the following table, the Non-H and H(model) columns list the number of non-hydrogen atoms and hydrogen atoms in the chain respectively. The H(added) column lists the number of hydrogen atoms added and optimized by MolProbity. The Clashes column lists the number of clashes within the asymmetric unit, whereas Symm-Clashes lists symmetry related clashes.

Mol	Chain	Non-H	H(model)	H(added)	Clashes	Symm-Clashes
1	A	1583	0	1671	38	0
2	A	108	0	136	9	0
3	A	5	0	0	0	0
4	A	86	0	0	0	0
All	All	1782	0	1807	41	0

The all-atom clashscore is defined as the number of clashes found per 1000 atoms (including hydrogen atoms). The all-atom clashscore for this structure is 12.



All (41) close contacts within the same asymmetric unit are listed below, sorted by their clash magnitude.

Atom-1	Atom-2	Interatomic distance (Å)	Clash overlap (Å)
1:A:52[A]:GLY:O	1:A:155[A]:AIB:HB22	1.47	1.11
1:A:154[A]:ILE:O	1:A:155[A]:AIB:HB12	1.65	0.97
1:A:154[A]:ILE:O	1:A:155[A]:AIB:CB1	2.15	0.90
1:A:52[A]:GLY:C	1:A:155[A]:AIB:HB22	1.92	0.90
1:A:52[A]:GLY:C	1:A:155[A]:AIB:CB2	2.43	0.87
1:A:52[A]:GLY:O	1:A:155[A]:AIB:CB2	2.26	0.82
1:A:100:YCM:HD3	1:A:173:HIS:NE2	1.95	0.80
1:A:54:ILE:HG23	1:A:155[A]:AIB:HB13	1.64	0.79
1:A:50[B]:ILE:HD11	1:A:152:GLY:C	2.10	0.72
1:A:129:ASP:OD2	2:A:204[A]:2NC:HC32	1.90	0.70
1:A:50[B]:ILE:HD13	2:A:204[B]:2NC:HB1	1.73	0.70
1:A:54:ILE:HG23	1:A:155[A]:AIB:CB1	2.27	0.64
1:A:99:PHE:HB3	1:A:100:YCM:HD2	1.80	0.62
1:A:2:GLN:HE21	1:A:202:ASN:HD21	1.46	0.62
1:A:52[A]:GLY:N	1:A:155[A]:AIB:HB23	2.16	0.59
1:A:100:YCM:OZ1	1:A:104:GLY:HA2	2.01	0.59
1:A:51[A]:GLY:C	1:A:155[A]:AIB:HB23	2.24	0.57
1:A:2:GLN:NE2	1:A:202:ASN:HD21	2.08	0.51
1:A:146:TRP:CE2	1:A:161:ARG:HD2	2.46	0.50
1:A:42:TRP:CE2	1:A:57:ARG:HD2	2.46	0.50
1:A:100:YCM:OZ1	1:A:104:GLY:CA	2.58	0.50
1:A:100:YCM:HD3	1:A:173:HIS:CD2	2.47	0.49
1:A:154[A]:ILE:O	1:A:155[A]:AIB:HB13	2.12	0.48
1:A:14:ARG:HG3	1:A:19:LEU:HD23	1.95	0.47
1:A:100:YCM:CE	1:A:104:GLY:CA	2.93	0.46
1:A:185:PRO:HG2	2:A:204[B]:2NC:HE11	1.97	0.46
1:A:25:ASP:OD1	1:A:129:ASP:OD1	2.34	0.46
1:A:50[A]:ILE:HB	1:A:153[A]:GLY:HA3	1.97	0.45
1:A:47:ILE:CD1	1:A:154[B]:ILE:HD11	2.47	0.45
1:A:154[A]:ILE:HD12	2:A:204[A]:2NC:CG21	2.46	0.45
1:A:11:VAL:HB	1:A:67:ABA:HG3	1.98	0.44
1:A:42:TRP:CZ2	1:A:57:ARG:HD2	2.53	0.43
1:A:154[B]:ILE:CG2	1:A:154[B]:ILE:O	2.66	0.43
1:A:29:ASP:OD2	2:A:204[A]:2NC:HB	2.19	0.43
1:A:154[A]:ILE:O	1:A:154[A]:ILE:HG23	2.19	0.43
2:A:204[A]:2NC:HD3	2:A:204[A]:2NC:HA2	1.77	0.41
1:A:151:ILE:HB	2:A:204[A]:2NC:HE22	1.85	0.41
2:A:204[B]:2NC:N4	2:A:204[B]:2NC:HG31	2.36	0.41
1:A:138:GLU:O	1:A:139:GLU:C	2.58	0.41
1:A:52[A]:GLY:N	1:A:155[A]:AIB:CB2	2.83	0.40

*Continued on next page...*

Continued from previous page...

Atom-1	Atom-2	Interatomic distance (Å)	Clash overlap (Å)
2:A:204[A]:2NC:O2	2:A:204[A]:2NC:HD3	2.20	0.40

There are no symmetry-related clashes.

## 5.3 Torsion angles [i](#)

### 5.3.1 Protein backbone [i](#)

In the following table, the Percentiles column shows the percent Ramachandran outliers of the chain as a percentile score with respect to all X-ray entries followed by that with respect to entries of similar resolution.

The Analysed column shows the number of residues for which the backbone conformation was analysed, and the total number of residues.

Mol	Chain	Analysed	Favoured	Allowed	Outliers	Percentiles
1	A	195/203 (96%)	192 (98%)	3 (2%)	0	100 100

There are no Ramachandran outliers to report.

### 5.3.2 Protein sidechains [i](#)

In the following table, the Percentiles column shows the percent sidechain outliers of the chain as a percentile score with respect to all X-ray entries followed by that with respect to entries of similar resolution.

The Analysed column shows the number of residues for which the sidechain conformation was analysed, and the total number of residues.

Mol	Chain	Analysed	Rotameric	Outliers	Percentiles
1	A	158/156 (101%)	155 (98%)	3 (2%)	57 32

All (3) residues with a non-rotameric sidechain are listed below:

Mol	Chain	Res	Type
1	A	138	GLU
1	A	154[A]	ILE
1	A	154[B]	ILE

Some sidechains can be flipped to improve hydrogen bonding and reduce clashes. All (3) such

sidechains are listed below:

Mol	Chain	Res	Type
1	A	2	GLN
1	A	98	ASN
1	A	106	GLN

### 5.3.3 RNA [i](#)

There are no RNA molecules in this entry.

## 5.4 Non-standard residues in protein, DNA, RNA chains [i](#)

13 non-standard protein/DNA/RNA residues are modelled in this entry.

In the following table, the Counts columns list the number of bonds (or angles) for which Mogul statistics could be retrieved, the number of bonds (or angles) that are observed in the model and the number of bonds (or angles) that are defined in the Chemical Component Dictionary. The Link column lists molecule types, if any, to which the group is linked. The Z score for a bond length (or angle) is the number of standard deviations the observed value is removed from the expected value. A bond length (or angle) with  $|Z| > 2$  is considered an outlier worth inspection. RMSZ is the root-mean-square of all Z scores of the bond lengths (or angles).

Mol	Type	Chain	Res	Link	Bond lengths			Bond angles		
					Counts	RMSZ	# Z  > 2	Counts	RMSZ	# Z  > 2
1	NLE	A	140	1	6,7,8	0.62	0	2,7,9	0.35	0
1	NLE	A	46	1	6,7,8	0.65	0	2,7,9	0.21	0
1	ABA	A	199	1	4,5,6	0.47	0	1,5,7	0.13	0
1	NLE	A	150	1	6,7,8	0.58	0	2,7,9	0.23	0
1	NLE	A	36	1	6,7,8	0.54	0	2,7,9	0.41	0
1	YCM	A	41	1	7,9,10	2.91	2 (28%)	4,10,12	0.77	0
1	ABA	A	95	1	4,5,6	0.70	0	1,5,7	0.24	0
1	YCM	A	100	1	7,9,10	3.06	2 (28%)	4,10,12	0.59	0
1	AIB	A	155[A]	1	1,5,6	1.21	0	2,7,9	0.98	0
1	YCM	A	145	1	7,9,10	2.94	2 (28%)	4,10,12	0.76	0
1	AIB	A	155[B]	1	1,5,6	1.56	0	2,7,9	0.81	0
1	ABA	A	67	1	4,5,6	0.63	0	1,5,7	0.48	0
1	ABA	A	171	1	4,5,6	0.83	0	1,5,7	0.19	0

In the following table, the Chirals column lists the number of chiral outliers, the number of chiral centers analysed, the number of these observed in the model and the number defined in the Chemical Component Dictionary. Similar counts are reported in the Torsion and Rings columns. '-' means no outliers of that kind were identified.

Mol	Type	Chain	Res	Link	Chirals	Torsions	Rings
1	NLE	A	140	1	-	1/5/6/8	-
1	NLE	A	46	1	-	0/5/6/8	-
1	ABA	A	199	1	-	0/3/4/6	-
1	NLE	A	150	1	-	1/5/6/8	-
1	NLE	A	36	1	-	0/5/6/8	-
1	YCM	A	41	1	-	2/6/8/10	-
1	ABA	A	95	1	-	0/3/4/6	-
1	YCM	A	100	1	-	2/6/8/10	-
1	AIB	A	155[A]	1	-	2/2/3/6	-
1	YCM	A	145	1	-	2/6/8/10	-
1	AIB	A	155[B]	1	-	2/2/3/6	-
1	ABA	A	67	1	-	0/3/4/6	-
1	ABA	A	171	1	-	0/3/4/6	-

All (6) bond length outliers are listed below:

Mol	Chain	Res	Type	Atoms	Z	Observed(Å)	Ideal(Å)
1	A	100	YCM	CD-SG	-7.31	1.62	1.81
1	A	145	YCM	CD-SG	-6.72	1.64	1.81
1	A	41	YCM	CD-SG	-6.66	1.64	1.81
1	A	145	YCM	CB-SG	-3.74	1.65	1.80
1	A	41	YCM	CB-SG	-3.49	1.66	1.80
1	A	100	YCM	CB-SG	-3.33	1.67	1.80

There are no bond angle outliers.

There are no chirality outliers.

All (12) torsion outliers are listed below:

Mol	Chain	Res	Type	Atoms
1	A	41	YCM	CE-CD-SG-CB
1	A	100	YCM	SG-CD-CE-OZ1
1	A	100	YCM	SG-CD-CE-NZ2
1	A	155[A]	AIB	O-C-CA-CB1
1	A	155[A]	AIB	O-C-CA-CB2
1	A	150	NLE	O-C-CA-CB
1	A	145	YCM	SG-CD-CE-OZ1
1	A	145	YCM	SG-CD-CE-NZ2
1	A	140	NLE	CE-CD-CG-CB
1	A	155[B]	AIB	O-C-CA-CB1
1	A	155[B]	AIB	O-C-CA-CB2
1	A	41	YCM	SG-CD-CE-NZ2

There are no ring outliers.

3 monomers are involved in 19 short contacts:

Mol	Chain	Res	Type	Clashes	Symm-Clashes
1	A	100	YCM	6	0
1	A	155[A]	AIB	12	0
1	A	67	ABA	1	0

## 5.5 Carbohydrates [i](#)

There are no carbohydrates in this entry.

## 5.6 Ligand geometry [i](#)

3 ligands are modelled in this entry.

In the following table, the Counts columns list the number of bonds (or angles) for which Mogul statistics could be retrieved, the number of bonds (or angles) that are observed in the model and the number of bonds (or angles) that are defined in the Chemical Component Dictionary. The Link column lists molecule types, if any, to which the group is linked. The Z score for a bond length (or angle) is the number of standard deviations the observed value is removed from the expected value. A bond length (or angle) with  $|Z| > 2$  is considered an outlier worth inspection. RMSZ is the root-mean-square of all Z scores of the bond lengths (or angles).

Mol	Type	Chain	Res	Link	Bond lengths			Bond angles		
					Counts	RMSZ	# Z  > 2	Counts	RMSZ	# Z  > 2
3	SO4	A	401	-	4,4,4	0.15	0	6,6,6	0.14	0
2	2NC	A	204[A]	-	53,53,53	0.46	0	64,68,68	2.44	8 (12%)
2	2NC	A	204[B]	-	53,53,53	0.52	0	64,68,68	1.01	3 (4%)

In the following table, the Chirals column lists the number of chiral outliers, the number of chiral centers analysed, the number of these observed in the model and the number defined in the Chemical Component Dictionary. Similar counts are reported in the Torsion and Rings columns. '-' means no outliers of that kind were identified.

Mol	Type	Chain	Res	Link	Chirals	Torsions	Rings
2	2NC	A	204[A]	-	-	20/75/75/75	-
2	2NC	A	204[B]	-	-	15/75/75/75	-

There are no bond length outliers.

All (11) bond angle outliers are listed below:

Mol	Chain	Res	Type	Atoms	Z	Observed(°)	Ideal(°)
2	A	204[A]	2NC	O3-C4-N4	-14.13	96.76	122.93
2	A	204[A]	2NC	CA2-N2-C2	-7.62	111.05	123.20
2	A	204[A]	2NC	CA1-C2-N2	-5.82	103.92	116.48
2	A	204[A]	2NC	CA4-N4-C4	5.26	132.96	121.67
2	A	204[A]	2NC	CA3-C4-N4	3.75	124.92	116.70
2	A	204[A]	2NC	O2-C2-N2	2.30	127.18	122.93
2	A	204[B]	2NC	CA-N-C	2.20	125.60	121.84
2	A	204[A]	2NC	CG5-CD4-NE	2.18	118.43	112.21
2	A	204[A]	2NC	CB-CA-C1	-2.16	106.53	111.28
2	A	204[B]	2NC	O5-C6-N6	-2.07	119.40	123.00
2	A	204[B]	2NC	CA2-N2-C2	-2.03	119.95	123.20

There are no chirality outliers.

All (35) torsion outliers are listed below:

Mol	Chain	Res	Type	Atoms
2	A	204[A]	2NC	CA2-C3-N3-CA3
2	A	204[B]	2NC	C6-CA5-CB5-CG5
2	A	204[B]	2NC	N5-CA5-CB5-CG5
2	A	204[A]	2NC	CG5-CD4-NE-CZ
2	A	204[B]	2NC	CG5-CD4-NE-CZ
2	A	204[A]	2NC	NE-CD4-CG5-CB5
2	A	204[A]	2NC	C5-CA4-N4-C4
2	A	204[A]	2NC	O2-C2-N2-CA2
2	A	204[A]	2NC	CA2-CB2-CG-CD
2	A	204[A]	2NC	CA3-CB3-CG3-CD2
2	A	204[A]	2NC	CA5-CB5-CG5-CD4
2	A	204[A]	2NC	N3-C3-CA2-N2
2	A	204[B]	2NC	NE-CD4-CG5-CB5
2	A	204[A]	2NC	N2-C2-CA1-N1
2	A	204[B]	2NC	CA3-CB3-CG3-CD2
2	A	204[B]	2NC	N2-C2-CA1-N1
2	A	204[A]	2NC	CB4-CA4-N4-C4
2	A	204[B]	2NC	O2-C2-CA1-N1
2	A	204[A]	2NC	CE-CD-CG-CB2
2	A	204[B]	2NC	CE-CD-CG-CB2
2	A	204[B]	2NC	N2-CA2-CB2-CG
2	A	204[A]	2NC	O3-C4-N4-CA4
2	A	204[B]	2NC	CA5-CB5-CG5-CD4
2	A	204[A]	2NC	N2-C2-CA1-CB1
2	A	204[B]	2NC	CA4-CB4-CG4-CD3
2	A	204[B]	2NC	N2-C2-CA1-CB1
2	A	204[B]	2NC	O2-C2-CA1-CB1

*Continued on next page...*

*Continued from previous page...*

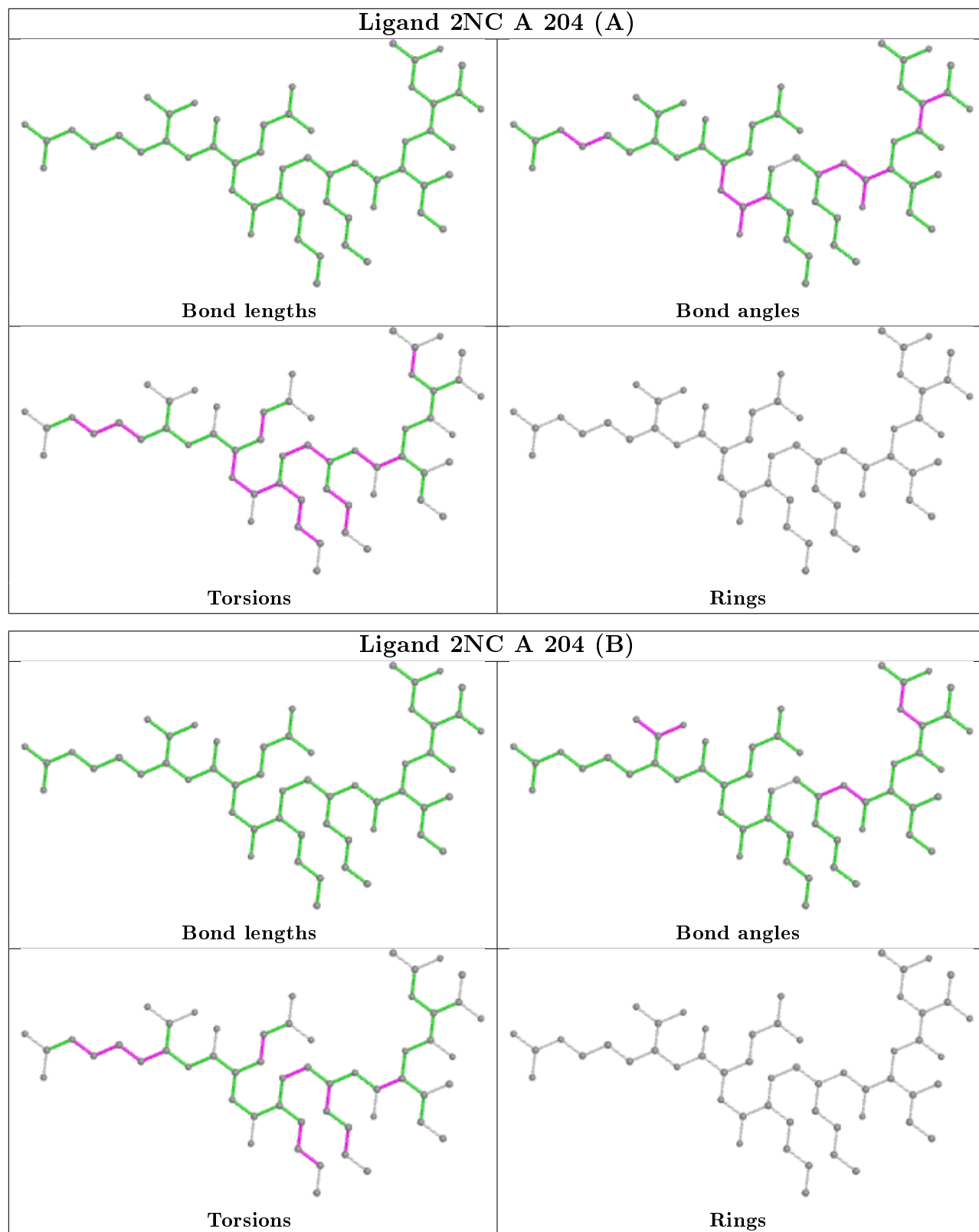
Mol	Chain	Res	Type	Atoms
2	A	204[B]	2NC	CE1-CD2-CG3-CB3
2	A	204[A]	2NC	CA4-CB4-CG4-CD3
2	A	204[A]	2NC	O-C-N-CA
2	A	204[A]	2NC	C4-CA3-CB3-CG3
2	A	204[B]	2NC	CA2-C3-N3-CA3
2	A	204[A]	2NC	N3-CA3-CB3-CG3
2	A	204[A]	2NC	CE1-CD2-CG3-CB3
2	A	204[A]	2NC	N4-C4-CA3-N3

There are no ring outliers.

2 monomers are involved in 9 short contacts:

Mol	Chain	Res	Type	Clashes	Symm-Clashes
2	A	204[A]	2NC	6	0
2	A	204[B]	2NC	3	0

The following is a two-dimensional graphical depiction of Mogul quality analysis of bond lengths, bond angles, torsion angles, and ring geometry for all instances of the Ligand of Interest. In addition, ligands with molecular weight > 250 and outliers as shown on the validation Tables will also be included. For torsion angles, if less than 5% of the Mogul distribution of torsion angles is within 10 degrees of the torsion angle in question, then that torsion angle is considered an outlier. Any bond that is central to one or more torsion angles identified as an outlier by Mogul will be highlighted in the graph. For rings, the root-mean-square deviation (RMSD) between the ring in question and similar rings identified by Mogul is calculated over all ring torsion angles. If the average RMSD is greater than 60 degrees and the minimal RMSD between the ring in question and any Mogul-identified rings is also greater than 60 degrees, then that ring is considered an outlier. The outliers are highlighted in purple. The color gray indicates Mogul did not find sufficient equivalents in the CSD to analyse the geometry.



## 5.7 Other polymers [\(i\)](#)

There are no such residues in this entry.



## 5.8 Polymer linkage issues

There are no chain breaks in this entry.

## 6 Fit of model and data

### 6.1 Protein, DNA and RNA chains

In the following table, the column labelled ‘#RSRZ> 2’ contains the number (and percentage) of RSRZ outliers, followed by percent RSRZ outliers for the chain as percentile scores relative to all X-ray entries and entries of similar resolution. The OWAB column contains the minimum, median, 95<sup>th</sup> percentile and maximum values of the occupancy-weighted average B-factor per residue. The column labelled ‘Q< 0.9’ lists the number of (and percentage) of residues with an average occupancy less than 0.9.

Mol	Chain	Analysed	<RSRZ>	#RSRZ>2	OWAB(Å <sup>2</sup> )	Q<0.9
1	A	191/203 (94%)	0.82	27 (14%) <b>2</b>   <b>2</b>	23, 29, 38, 43	26 (13%)

All (27) RSRZ outliers are listed below:

Mol	Chain	Res	Type	RSRZ
1	A	39	PRO	8.0
1	A	203	PHE	4.9
1	A	42	TRP	4.8
1	A	142	LEU	4.5
1	A	1	PRO	4.1
1	A	188	ILE	3.9
1	A	189	ILE	3.8
1	A	103	GLY	3.7
1	A	99	PHE	3.4
1	A	40	GLY	3.1
1	A	50[A]	ILE	2.9
1	A	146	TRP	2.8
1	A	139	GLU	2.7
1	A	143	PRO	2.6
1	A	16	GLY	2.6
1	A	132	ALA	2.5
1	A	104	GLY	2.5
1	A	85	ILE	2.5
1	A	84	ILE	2.3
1	A	136	VAL	2.3
1	A	141	ASN	2.3
1	A	193	LEU	2.2
1	A	89	LEU	2.2
1	A	101	GLY	2.2
1	A	194	LEU	2.2
1	A	144	GLY	2.1
1	A	23	LEU	2.1

## 6.2 Non-standard residues in protein, DNA, RNA chains [i](#)

In the following table, the Atoms column lists the number of modelled atoms in the group and the number defined in the chemical component dictionary. The B-factors column lists the minimum, median, 95<sup>th</sup> percentile and maximum values of B factors of atoms in the group. The column labelled 'Q< 0.9' lists the number of atoms with occupancy less than 0.9.

Mol	Type	Chain	Res	Atoms	RSCC	RSR	B-factors(Å <sup>2</sup> )	Q<0.9
1	YCM	A	145	10/11	0.53	0.44	33,34,39,40	8
1	YCM	A	41	10/11	0.64	0.47	40,42,44,45	5
1	YCM	A	100	10/11	0.69	0.30	24,30,39,41	10
1	NLE	A	140	8/9	0.77	0.21	37,39,41,42	2
1	NLE	A	36	8/9	0.88	0.22	33,35,37,40	0
1	ABA	A	171	6/7	0.89	0.23	33,34,36,36	0
1	ABA	A	199	6/7	0.90	0.10	29,30,32,33	0
1	NLE	A	150	8/9	0.91	0.11	23,24,27,31	0
1	NLE	A	46	8/9	0.93	0.10	26,27,28,29	0
1	ABA	A	67	6/7	0.94	0.08	32,34,37,37	0
1	AIB	A	155[B]	6/7	0.96	0.12	26,26,27,27	6
1	AIB	A	155[A]	6/7	0.96	0.12	27,27,29,31	6
1	ABA	A	95	6/7	0.96	0.08	26,27,29,29	0

## 6.3 Carbohydrates [i](#)

There are no carbohydrates in this entry.

## 6.4 Ligands [i](#)

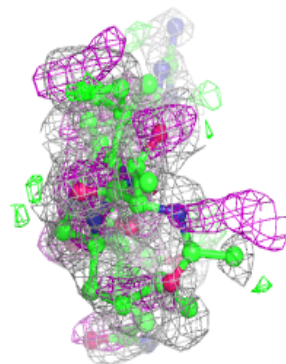
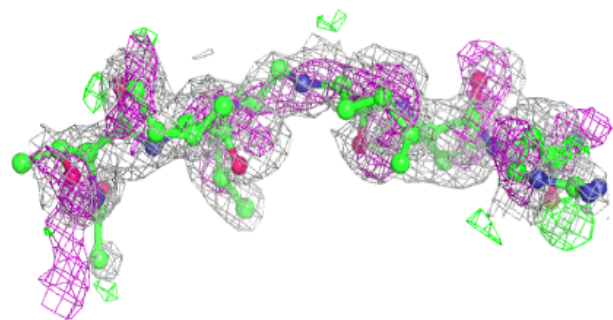
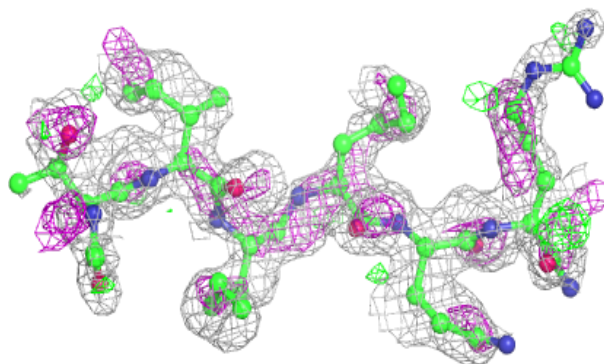
In the following table, the Atoms column lists the number of modelled atoms in the group and the number defined in the chemical component dictionary. The B-factors column lists the minimum, median, 95<sup>th</sup> percentile and maximum values of B factors of atoms in the group. The column labelled 'Q< 0.9' lists the number of atoms with occupancy less than 0.9.

Mol	Type	Chain	Res	Atoms	RSCC	RSR	B-factors(Å <sup>2</sup> )	Q<0.9
3	SO4	A	401	5/5	0.72	0.20	53,53,55,55	5
2	2NC	A	204[A]	54/54	0.88	0.24	2,10,13,14	54
2	2NC	A	204[B]	54/54	0.88	0.24	4,8,16,17	54

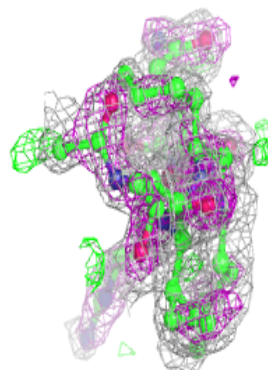
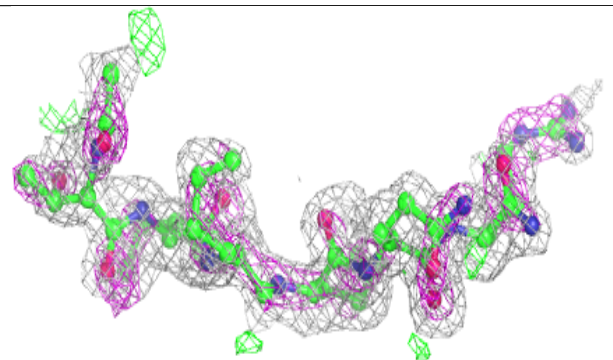
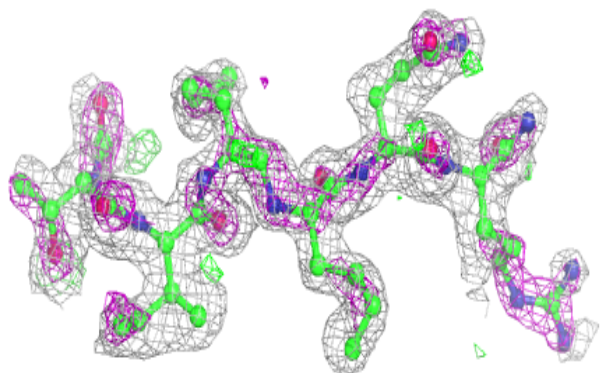
The following is a graphical depiction of the model fit to experimental electron density of all instances of the Ligand of Interest. In addition, ligands with molecular weight > 250 and outliers as shown on the geometry validation Tables will also be included. Each fit is shown from different orientation to approximate a three-dimensional view.

**Electron density around 2NC A 204 (A):**

$2mF_o-DF_c$  (at 0.7 rmsd) in gray  
 $mF_o-DF_c$  (at 3 rmsd) in purple (negative)  
and green (positive)

**Electron density around 2NC A 204 (B):**

$2mF_o-DF_c$  (at 0.7 rmsd) in gray  
 $mF_o-DF_c$  (at 3 rmsd) in purple (negative)  
and green (positive)



## 6.5 Other polymers

There are no such residues in this entry.