



Full wwPDB X-ray Structure Validation Report ⓘ

Feb 1, 2024 – 04:08 PM JST

PDB ID : 8IAY
Title : Crystal structure of canine distemper virus hemagglutinin
Authors : Fukuhara, H.; Yumoto, K.; Sako, M.; Kajikawa, M.; Ose, T.; Hashiguchi, T.;
Kamishikiryo, J.; Maita, N.; Kuroki, K.; Maenaka, K.
Deposited on : 2023-02-09
Resolution : 3.03 Å(reported)

This is a Full wwPDB X-ray Structure Validation Report for a publicly released PDB entry.

We welcome your comments at validation@mail.wwpdb.org

A user guide is available at

<https://www.wwpdb.org/validation/2017/XrayValidationReportHelp>

with specific help available everywhere you see the ⓘ symbol.

The types of validation reports are described at

<http://www.wwpdb.org/validation/2017/FAQs#types>.

The following versions of software and data (see [references ⓘ](#)) were used in the production of this report:

MolProbity : 4.02b-467
Mogul : 1.8.5 (274361), CSD as541be (2020)
Xtriage (Phenix) : 1.13
EDS : 2.36
buster-report : 1.1.7 (2018)
Percentile statistics : 20191225.v01 (using entries in the PDB archive December 25th 2019)
Refmac : 5.8.0158
CCP4 : 7.0.044 (Gargrove)
Ideal geometry (proteins) : Engh & Huber (2001)
Ideal geometry (DNA, RNA) : Parkinson et al. (1996)
Validation Pipeline (wwPDB-VP) : 2.36

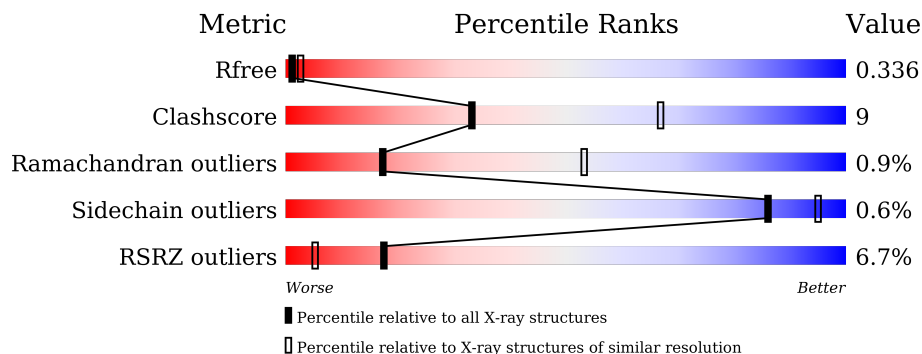
1 Overall quality at a glance

The following experimental techniques were used to determine the structure:

X-RAY DIFFRACTION

The reported resolution of this entry is 3.03 Å.

Percentile scores (ranging between 0-100) for global validation metrics of the entry are shown in the following graphic. The table shows the number of entries on which the scores are based.



Metric	Whole archive (#Entries)	Similar resolution (#Entries, resolution range(Å))
R_{free}	130704	2399 (3.04-3.00)
Clashscore	141614	2734 (3.04-3.00)
Ramachandran outliers	138981	2640 (3.04-3.00)
Sidechain outliers	138945	2643 (3.04-3.00)
RSRZ outliers	127900	2287 (3.04-3.00)

The table below summarises the geometric issues observed across the polymeric chains and their fit to the electron density. The red, orange, yellow and green segments of the lower bar indicate the fraction of residues that contain outliers for ≥ 3 , 2, 1 and 0 types of geometric quality criteria respectively. A grey segment represents the fraction of residues that are not modelled. The numeric value for each fraction is indicated below the corresponding segment, with a dot representing fractions $\leq 5\%$. The upper red bar (where present) indicates the fraction of residues that have poor fit to the electron density. The numeric value is given above the bar.

Mol	Chain	Length	Quality of chain
1	A	468	 3% 72% 17% 10%
1	B	468	 9% 69% 20% 10%

The following table lists non-polymeric compounds, carbohydrate monomers and non-standard residues in protein, DNA, RNA chains that are outliers for geometric or electron-density-fit criteria:

Mol	Type	Chain	Res	Chirality	Geometry	Clashes	Electron density
2	NAG	A	901	-	-	-	X
2	NAG	B	901	-	-	-	X

2 Entry composition i

There are 2 unique types of molecules in this entry. The entry contains 6563 atoms, of which 0 are hydrogens and 0 are deuteriums.

In the tables below, the ZeroOcc column contains the number of atoms modelled with zero occupancy, the AltConf column contains the number of residues with at least one atom in alternate conformation and the Trace column contains the number of residues modelled with at most 2 atoms.

- Molecule 1 is a protein called Hemagglutinin glycoprotein.

Mol	Chain	Residues	Atoms					ZeroOcc	AltConf	Trace
			Total	C	N	O	S			
1	A	421	3270	2096	543	611	20	0	0	0
1	B	420	3265	2097	551	597	20	0	0	0

There are 28 discrepancies between the modelled and reference sequences:

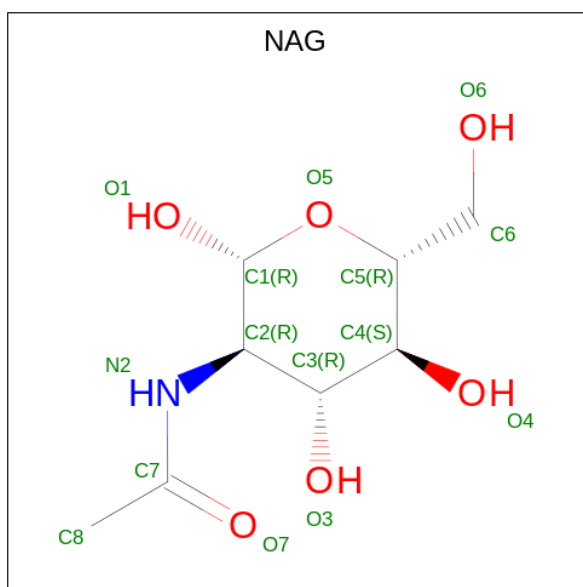
Chain	Residue	Modelled	Actual	Comment	Reference
A	146	GLU	-	expression tag	UNP C0LEZ2
A	147	THR	-	expression tag	UNP C0LEZ2
A	148	GLY	-	expression tag	UNP C0LEZ2
A	477	GLN	HIS	conflict	UNP C0LEZ2
A	479	LEU	SER	conflict	UNP C0LEZ2
A	605	GLY	-	expression tag	UNP C0LEZ2
A	606	THR	-	expression tag	UNP C0LEZ2
A	607	LYS	-	expression tag	UNP C0LEZ2
A	608	HIS	-	expression tag	UNP C0LEZ2
A	609	HIS	-	expression tag	UNP C0LEZ2
A	610	HIS	-	expression tag	UNP C0LEZ2
A	611	HIS	-	expression tag	UNP C0LEZ2
A	612	HIS	-	expression tag	UNP C0LEZ2
A	613	HIS	-	expression tag	UNP C0LEZ2
B	146	GLU	-	expression tag	UNP C0LEZ2
B	147	THR	-	expression tag	UNP C0LEZ2
B	148	GLY	-	expression tag	UNP C0LEZ2
B	477	GLN	HIS	conflict	UNP C0LEZ2
B	479	LEU	SER	conflict	UNP C0LEZ2
B	605	GLY	-	expression tag	UNP C0LEZ2
B	606	THR	-	expression tag	UNP C0LEZ2
B	607	LYS	-	expression tag	UNP C0LEZ2
B	608	HIS	-	expression tag	UNP C0LEZ2
B	609	HIS	-	expression tag	UNP C0LEZ2
B	610	HIS	-	expression tag	UNP C0LEZ2

Continued on next page...

Continued from previous page...

Chain	Residue	Modelled	Actual	Comment	Reference
B	611	HIS	-	expression tag	UNP C0LEZ2
B	612	HIS	-	expression tag	UNP C0LEZ2
B	613	HIS	-	expression tag	UNP C0LEZ2

- Molecule 2 is 2-acetamido-2-deoxy-beta-D-glucopyranose (three-letter code: NAG) (formula: C₈H₁₅NO₆) (labeled as "Ligand of Interest" by depositor).

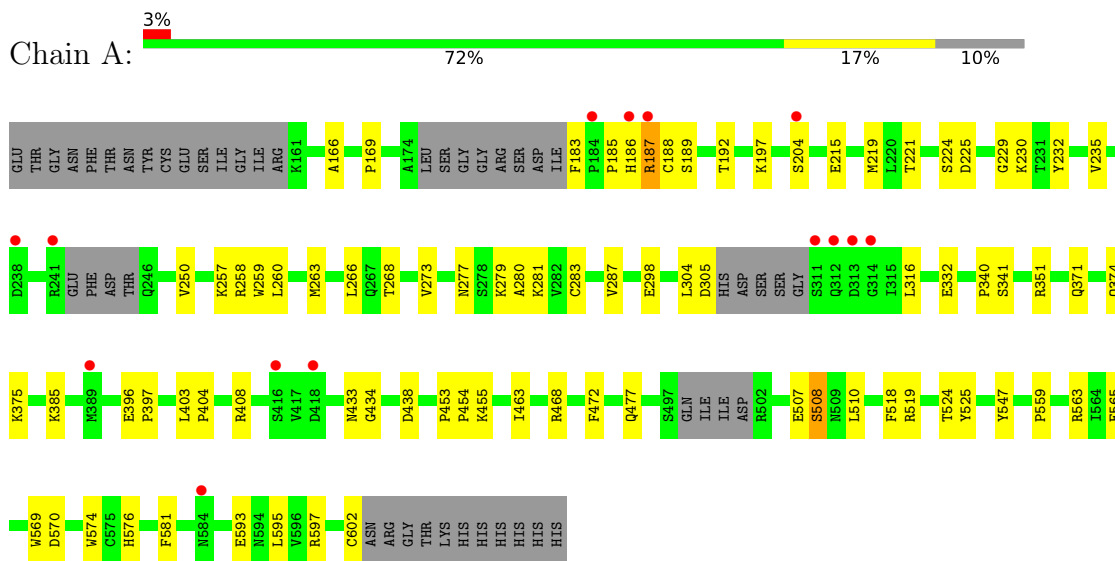


Mol	Chain	Residues	Atoms				ZeroOcc	AltConf
			Total	C	N	O		
2	A	1	14	8	1	5	0	0
2	B	1	14	8	1	5	0	0

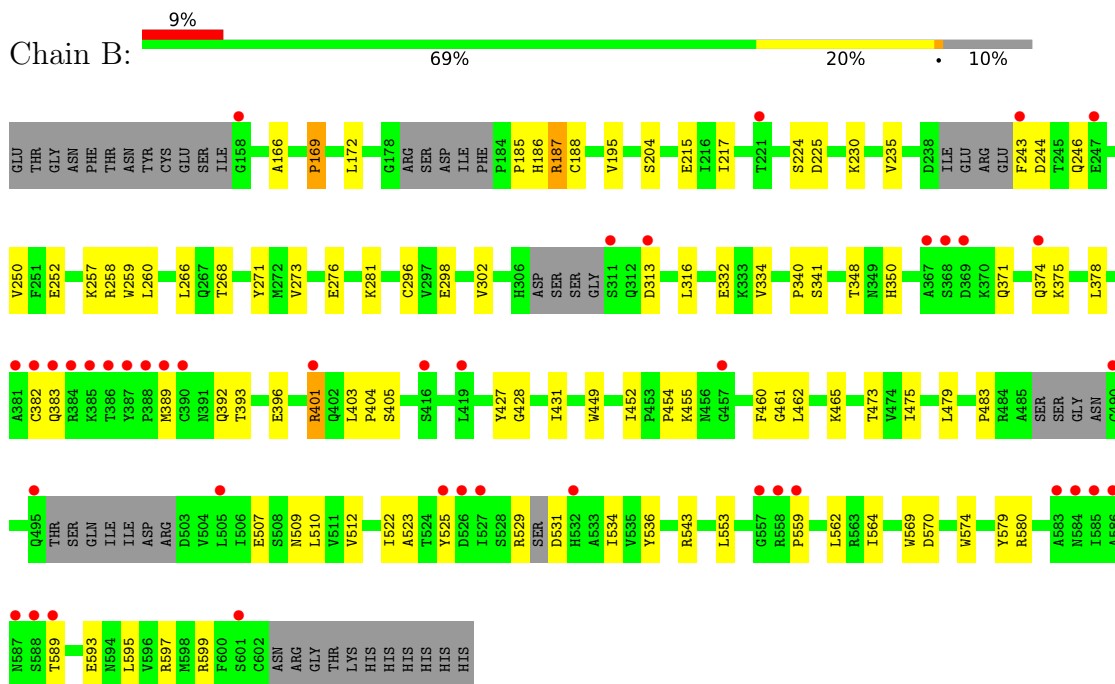
3 Residue-property plots i

These plots are drawn for all protein, RNA, DNA and oligosaccharide chains in the entry. The first graphic for a chain summarises the proportions of the various outlier classes displayed in the second graphic. The second graphic shows the sequence view annotated by issues in geometry and electron density. Residues are color-coded according to the number of geometric quality criteria for which they contain at least one outlier: green = 0, yellow = 1, orange = 2 and red = 3 or more. A red dot above a residue indicates a poor fit to the electron density ($RSRZ > 2$). Stretches of 2 or more consecutive residues without any outlier are shown as a green connector. Residues present in the sample, but not in the model, are shown in grey.

- Molecule 1: Hemagglutinin glycoprotein



- Molecule 1: Hemagglutinin glycoprotein



4 Data and refinement statistics

Property	Value	Source
Space group	P 43 21 2	Depositor
Cell constants a, b, c, α , β , γ	86.16Å 86.16Å 302.94Å 90.00° 90.00° 90.00°	Depositor
Resolution (Å)	34.67 – 3.03 34.67 – 3.03	Depositor EDS
% Data completeness (in resolution range)	98.9 (34.67-3.03) 99.0 (34.67-3.03)	Depositor EDS
R_{merge}	(Not available)	Depositor
R_{sym}	(Not available)	Depositor
$\langle I/\sigma(I) \rangle$ ¹	1.24 (at 3.00Å)	Xtrriage
Refinement program	PHENIX (1.16_3549:)	Depositor
R, R_{free}	0.284 , 0.336 0.282 , 0.336	Depositor DCC
R_{free} test set	1178 reflections (5.12%)	wwPDB-VP
Wilson B-factor (Å ²)	69.5	Xtrriage
Anisotropy	0.431	Xtrriage
Bulk solvent k_{sol} (e/Å ³), B_{sol} (Å ²)	0.27 , 13.3	EDS
L-test for twinning ²	$\langle L \rangle = 0.52$, $\langle L^2 \rangle = 0.37$	Xtrriage
Estimated twinning fraction	No twinning to report.	Xtrriage
F_o, F_c correlation	0.87	EDS
Total number of atoms	6563	wwPDB-VP
Average B, all atoms (Å ²)	60.0	wwPDB-VP

Xtrriage's analysis on translational NCS is as follows: *The largest off-origin peak in the Patterson function is 3.10% of the height of the origin peak. No significant pseudotranslation is detected.*

¹Intensities estimated from amplitudes.

²Theoretical values of $\langle |L| \rangle$, $\langle L^2 \rangle$ for acentric reflections are 0.5, 0.333 respectively for untwinned datasets, and 0.375, 0.2 for perfectly twinned datasets.

5 Model quality [i](#)

5.1 Standard geometry [i](#)

Bond lengths and bond angles in the following residue types are not validated in this section: NAG

The Z score for a bond length (or angle) is the number of standard deviations the observed value is removed from the expected value. A bond length (or angle) with $|Z| > 5$ is considered an outlier worth inspection. RMSZ is the root-mean-square of all Z scores of the bond lengths (or angles).

Mol	Chain	Bond lengths		Bond angles	
		RMSZ	# Z >5	RMSZ	# Z >5
1	A	0.25	0/3345	0.48	0/4556
1	B	0.26	0/3339	0.49	0/4540
All	All	0.25	0/6684	0.48	0/9096

There are no bond length outliers.

There are no bond angle outliers.

There are no chirality outliers.

There are no planarity outliers.

5.2 Too-close contacts [i](#)

In the following table, the Non-H and H(model) columns list the number of non-hydrogen atoms and hydrogen atoms in the chain respectively. The H(added) column lists the number of hydrogen atoms added and optimized by MolProbity. The Clashes column lists the number of clashes within the asymmetric unit, whereas Symm-Clashes lists symmetry-related clashes.

Mol	Chain	Non-H	H(model)	H(added)	Clashes	Symm-Clashes
1	A	3270	0	3228	57	0
1	B	3265	0	3245	56	0
2	A	14	0	13	0	0
2	B	14	0	13	0	0
All	All	6563	0	6499	112	0

The all-atom clashscore is defined as the number of clashes found per 1000 atoms (including hydrogen atoms). The all-atom clashscore for this structure is 9.

All (112) close contacts within the same asymmetric unit are listed below, sorted by their clash magnitude.

Atom-1	Atom-2	Interatomic distance (Å)	Clash overlap (Å)
1:B:374:GLN:NE2	1:B:428:GLY:O	2.10	0.83
1:A:185:PRO:HG3	1:A:519:ARG:HE	1.48	0.78
1:B:509:ASN:ND2	1:B:564:ILE:O	2.18	0.77
1:B:509:ASN:HD22	1:B:564:ILE:H	1.34	0.74
1:A:186:HIS:HE1	1:A:602:CYS:HB3	1.53	0.74
1:B:281:LYS:HG3	1:B:298:GLU:HG3	1.72	0.72
1:B:172:LEU:HD21	1:B:257:LYS:HG2	1.71	0.72
1:B:378:LEU:HD22	1:B:403:LEU:HD21	1.72	0.71
1:B:534:ILE:HG13	1:B:553:LEU:HD11	1.73	0.70
1:B:224:SER:OG	1:B:225:ASP:N	2.24	0.70
1:A:224:SER:OG	1:A:225:ASP:N	2.26	0.69
1:A:453:PRO:HA	1:A:510:LEU:HD23	1.77	0.67
1:B:204:SER:OG	1:B:252:GLU:OE2	2.10	0.66
1:A:351:ARG:NH1	1:A:565:GLU:OE1	2.28	0.66
1:A:186:HIS:CE1	1:A:602:CYS:HB3	2.32	0.65
1:A:258:ARG:NH2	1:A:570:ASP:OD2	2.27	0.64
1:A:559:PRO:HA	1:A:581:PHE:HA	1.79	0.64
1:B:230:LYS:NZ	1:B:593:GLU:OE2	2.19	0.63
1:A:221:THR:HG21	1:A:576:HIS:HD1	1.63	0.63
1:A:230:LYS:NZ	1:A:593:GLU:OE2	2.24	0.63
1:B:569:TRP:HB3	1:B:574:TRP:CD1	2.35	0.62
1:B:396:GLU:OE2	1:B:455:LYS:NZ	2.23	0.59
1:B:507:GLU:OE2	1:B:522:ILE:HG13	2.03	0.59
1:B:332:GLU:HG2	1:B:334:VAL:HG23	1.84	0.58
1:A:304:LEU:N	1:A:305:ASP:HA	2.19	0.57
1:A:438:ASP:OD2	1:A:563:ARG:NH2	2.38	0.56
1:B:529:ARG:O	1:B:531:ASP:N	2.40	0.54
1:B:186:HIS:HA	1:B:543:ARG:HH22	1.72	0.53
1:A:396:GLU:OE2	1:A:455:LYS:NZ	2.42	0.53
1:A:183:PHE:HZ	1:A:187:ARG:HB3	1.74	0.53
1:A:186:HIS:CD2	1:A:188:CYS:H	2.27	0.53
1:B:523:ALA:HB2	1:B:536:TYR:CD1	2.44	0.53
1:A:396:GLU:HG2	1:A:434:GLY:H	1.74	0.52
1:B:215:GLU:OE2	1:B:589:THR:HB	2.09	0.52
1:B:574:TRP:CE2	1:B:597:ARG:HG3	2.44	0.52
1:A:215:GLU:HB3	1:A:235:VAL:HB	1.90	0.52
1:A:266:LEU:HD13	1:A:595:LEU:HD11	1.92	0.52
1:A:397:PRO:HG2	1:A:404:PRO:HB3	1.91	0.52
1:A:230:LYS:HE2	1:A:576:HIS:CE1	2.44	0.51
1:B:389:MET:HA	1:B:392:GLN:HG3	1.93	0.51
1:B:348:THR:H	1:B:350:HIS:CD2	2.29	0.50
1:A:230:LYS:HE2	1:A:576:HIS:HE1	1.77	0.50

Continued on next page...

Continued from previous page...

Atom-1	Atom-2	Interatomic distance (Å)	Clash overlap (Å)
1:B:449:TRP:CD1	1:B:512:VAL:HG11	2.47	0.50
1:A:403:LEU:HD12	1:A:404:PRO:HD2	1.94	0.49
1:A:281:LYS:HG3	1:A:298:GLU:HG3	1.95	0.49
1:A:569:TRP:HB3	1:A:574:TRP:CD1	2.48	0.49
1:B:302:VAL:HG13	1:B:313:ASP:HB3	1.93	0.49
1:A:408:ARG:HB2	1:A:472:PHE:CZ	2.48	0.49
1:B:185:PRO:O	1:B:543:ARG:NH1	2.44	0.48
1:B:215:GLU:HB3	1:B:235:VAL:CG2	2.43	0.48
1:A:574:TRP:CZ2	1:A:597:ARG:HD3	2.48	0.48
1:A:186:HIS:HD2	1:A:187:ARG:N	2.11	0.48
1:A:221:THR:HG21	1:A:576:HIS:ND1	2.26	0.48
1:A:280:ALA:HB1	1:A:283:CYS:SG	2.54	0.48
1:B:340:PRO:HA	1:B:341:SER:HA	1.45	0.48
1:B:462:LEU:HA	1:B:479:LEU:HB2	1.96	0.47
1:B:404:PRO:HG2	1:B:431:ILE:HB	1.97	0.47
1:B:246:GLN:NE2	1:B:276:GLU:OE2	2.31	0.47
1:A:454:PRO:HD3	1:A:510:LEU:CD2	2.45	0.47
1:B:371:GLN:O	1:B:375:LYS:HG3	2.14	0.47
1:A:477:GLN:HG2	1:A:518:PHE:CZ	2.50	0.46
1:A:340:PRO:HA	1:A:341:SER:HA	1.39	0.46
1:B:296:CYS:HB2	1:B:316:LEU:HB3	1.98	0.46
1:B:250:VAL:HG22	1:B:273:VAL:HG22	1.98	0.46
1:A:463:ILE:HG21	1:A:518:PHE:HZ	1.80	0.46
1:B:405:SER:HB3	1:B:427:TYR:CE1	2.51	0.45
1:A:396:GLU:HB3	1:A:397:PRO:HD3	1.98	0.45
1:B:452:ILE:O	1:B:461:GLY:HA3	2.17	0.45
1:B:454:PRO:HB3	1:B:460:PHE:HA	1.97	0.45
1:A:183:PHE:HD1	1:A:185:PRO:HD2	1.82	0.44
1:A:259:TRP:CG	1:A:260:LEU:N	2.86	0.44
1:A:408:ARG:HH21	1:A:468:ARG:HA	1.82	0.44
1:B:259:TRP:CG	1:B:260:LEU:N	2.85	0.44
1:A:371:GLN:O	1:A:375:LYS:HG3	2.18	0.44
1:B:195:VAL:HG13	1:B:599:ARG:HB2	1.98	0.44
1:A:229:GLY:HA3	1:A:287:VAL:HG11	2.00	0.44
1:A:250:VAL:HG22	1:A:273:VAL:HG22	1.98	0.44
1:B:509:ASN:HD22	1:B:564:ILE:N	2.10	0.44
1:A:258:ARG:HG2	1:A:569:TRP:CZ2	2.53	0.44
1:B:266:LEU:HD13	1:B:595:LEU:HD11	1.99	0.43
1:B:186:HIS:HA	1:B:543:ARG:NH2	2.32	0.43
1:A:192:THR:HG21	1:A:547:TYR:HD1	1.83	0.43
1:B:510:LEU:HD12	1:B:522:ILE:HB	2.01	0.43

Continued on next page...

Continued from previous page...

Atom-1	Atom-2	Interatomic distance (Å)	Clash overlap (Å)
1:B:393:THR:HG22	1:B:401:ARG:HH11	1.84	0.43
1:B:473:THR:HG22	1:B:475:ILE:HG13	1.99	0.43
1:A:507:GLU:O	1:A:508:SER:HB2	2.19	0.43
1:A:433:ASN:ND2	1:A:455:LYS:HB2	2.34	0.43
1:B:243:PHE:CD1	1:B:244:ASP:HB2	2.54	0.42
1:B:393:THR:O	1:B:401:ARG:HG2	2.19	0.42
1:A:374:GLN:HB3	1:A:403:LEU:HD23	2.00	0.42
1:B:187:ARG:HG3	1:B:188:CYS:H	1.83	0.42
1:A:454:PRO:HD3	1:A:510:LEU:HD23	2.02	0.42
1:A:219:MET:HA	1:A:232:TYR:HB3	2.01	0.42
1:A:166:ALA:C	1:A:169:PRO:HD2	2.40	0.42
1:A:316:LEU:HD12	1:A:332:GLU:O	2.20	0.42
1:A:576:HIS:NE2	1:A:593:GLU:HG3	2.34	0.42
1:A:257:LYS:HD2	1:B:271:TYR:CE1	2.54	0.42
1:B:215:GLU:HB3	1:B:235:VAL:HG22	2.02	0.42
1:A:507:GLU:HB2	1:A:524:THR:HG22	2.01	0.42
1:A:197:LYS:HD2	1:A:263:MET:HE1	2.00	0.41
1:B:166:ALA:C	1:B:169:PRO:HD2	2.41	0.41
1:B:204:SER:HA	1:B:268:THR:OG1	2.21	0.41
1:A:525:TYR:CG	1:A:559:PRO:HG3	2.56	0.41
1:B:465:LYS:HB2	1:B:465:LYS:HE3	1.89	0.41
1:A:385:LYS:HD2	1:A:385:LYS:HA	1.91	0.41
1:B:389:MET:O	1:B:389:MET:HG2	2.20	0.41
1:A:186:HIS:CD2	1:A:187:ARG:N	2.89	0.41
1:B:525:TYR:CG	1:B:559:PRO:HG3	2.56	0.40
1:B:562:LEU:HD13	1:B:579:TYR:HB3	2.03	0.40
1:A:204:SER:HA	1:A:268:THR:OG1	2.21	0.40
1:B:217:ILE:HA	1:B:580:ARG:HD2	2.03	0.40
1:B:258:ARG:NH1	1:B:570:ASP:OD2	2.44	0.40

There are no symmetry-related clashes.

5.3 Torsion angles [i](#)

5.3.1 Protein backbone [i](#)

In the following table, the Percentiles column shows the percent Ramachandran outliers of the chain as a percentile score with respect to all X-ray entries followed by that with respect to entries of similar resolution.

The Analysed column shows the number of residues for which the backbone conformation was analysed, and the total number of residues.

Mol	Chain	Analysed	Favoured	Allowed	Outliers	Percentiles	
1	A	411/468 (88%)	389 (95%)	18 (4%)	4 (1%)	15	50
1	B	406/468 (87%)	377 (93%)	26 (6%)	3 (1%)	22	59
All	All	817/936 (87%)	766 (94%)	44 (5%)	7 (1%)	17	53

All (7) Ramachandran outliers are listed below:

Mol	Chain	Res	Type
1	A	277	ASN
1	A	508	SER
1	B	483	PRO
1	A	279	LYS
1	A	189	SER
1	B	187	ARG
1	B	169	PRO

5.3.2 Protein sidechains [i](#)

In the following table, the Percentiles column shows the percent sidechain outliers of the chain as a percentile score with respect to all X-ray entries followed by that with respect to entries of similar resolution.

The Analysed column shows the number of residues for which the sidechain conformation was analysed, and the total number of residues.

Mol	Chain	Analysed	Rotameric	Outliers	Percentiles	
1	A	364/413 (88%)	363 (100%)	1 (0%)	92	97
1	B	361/413 (87%)	358 (99%)	3 (1%)	81	93
All	All	725/826 (88%)	721 (99%)	4 (1%)	86	95

All (4) residues with a non-rotameric sidechain are listed below:

Mol	Chain	Res	Type
1	A	187	ARG
1	B	382	CYS
1	B	383	GLN
1	B	401	ARG

Sometimes sidechains can be flipped to improve hydrogen bonding and reduce clashes. All (3) such sidechains are listed below:

Mol	Chain	Res	Type
1	A	186	HIS
1	A	456	ASN
1	B	509	ASN

5.3.3 RNA [i](#)

There are no RNA molecules in this entry.

5.4 Non-standard residues in protein, DNA, RNA chains [i](#)

There are no non-standard protein/DNA/RNA residues in this entry.

5.5 Carbohydrates [i](#)

There are no monosaccharides in this entry.

5.6 Ligand geometry [i](#)

2 ligands are modelled in this entry.

In the following table, the Counts columns list the number of bonds (or angles) for which Mogul statistics could be retrieved, the number of bonds (or angles) that are observed in the model and the number of bonds (or angles) that are defined in the Chemical Component Dictionary. The Link column lists molecule types, if any, to which the group is linked. The Z score for a bond length (or angle) is the number of standard deviations the observed value is removed from the expected value. A bond length (or angle) with $|Z| > 2$ is considered an outlier worth inspection. RMSZ is the root-mean-square of all Z scores of the bond lengths (or angles).

Mol	Type	Chain	Res	Link	Bond lengths			Bond angles		
					Counts	RMSZ	# Z > 2	Counts	RMSZ	# Z > 2
2	NAG	A	901	1	14,14,15	0.37	0	17,19,21	1.38	2 (11%)
2	NAG	B	901	1	14,14,15	0.63	0	17,19,21	0.93	1 (5%)

In the following table, the Chirals column lists the number of chiral outliers, the number of chiral centers analysed, the number of these observed in the model and the number defined in the Chemical Component Dictionary. Similar counts are reported in the Torsion and Rings columns. '-' means no outliers of that kind were identified.

Mol	Type	Chain	Res	Link	Chirals	Torsions	Rings
2	NAG	A	901	1	-	0/6/23/26	0/1/1/1
2	NAG	B	901	1	-	2/6/23/26	0/1/1/1

There are no bond length outliers.

All (3) bond angle outliers are listed below:

Mol	Chain	Res	Type	Atoms	Z	Observed($^{\circ}$)	Ideal($^{\circ}$)
2	A	901	NAG	C1-O5-C5	3.33	116.70	112.19
2	A	901	NAG	C3-C4-C5	2.70	115.05	110.24
2	B	901	NAG	C1-O5-C5	2.01	114.91	112.19

There are no chirality outliers.

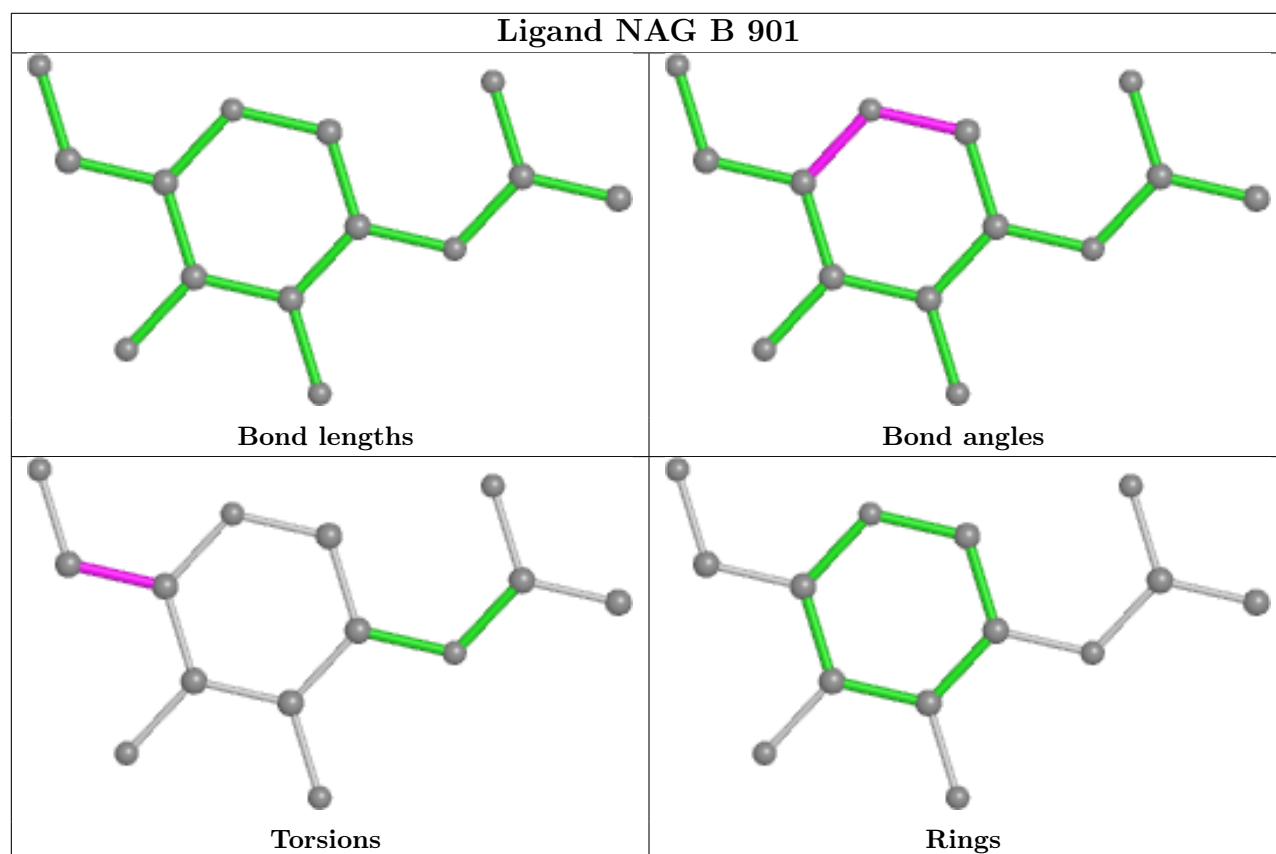
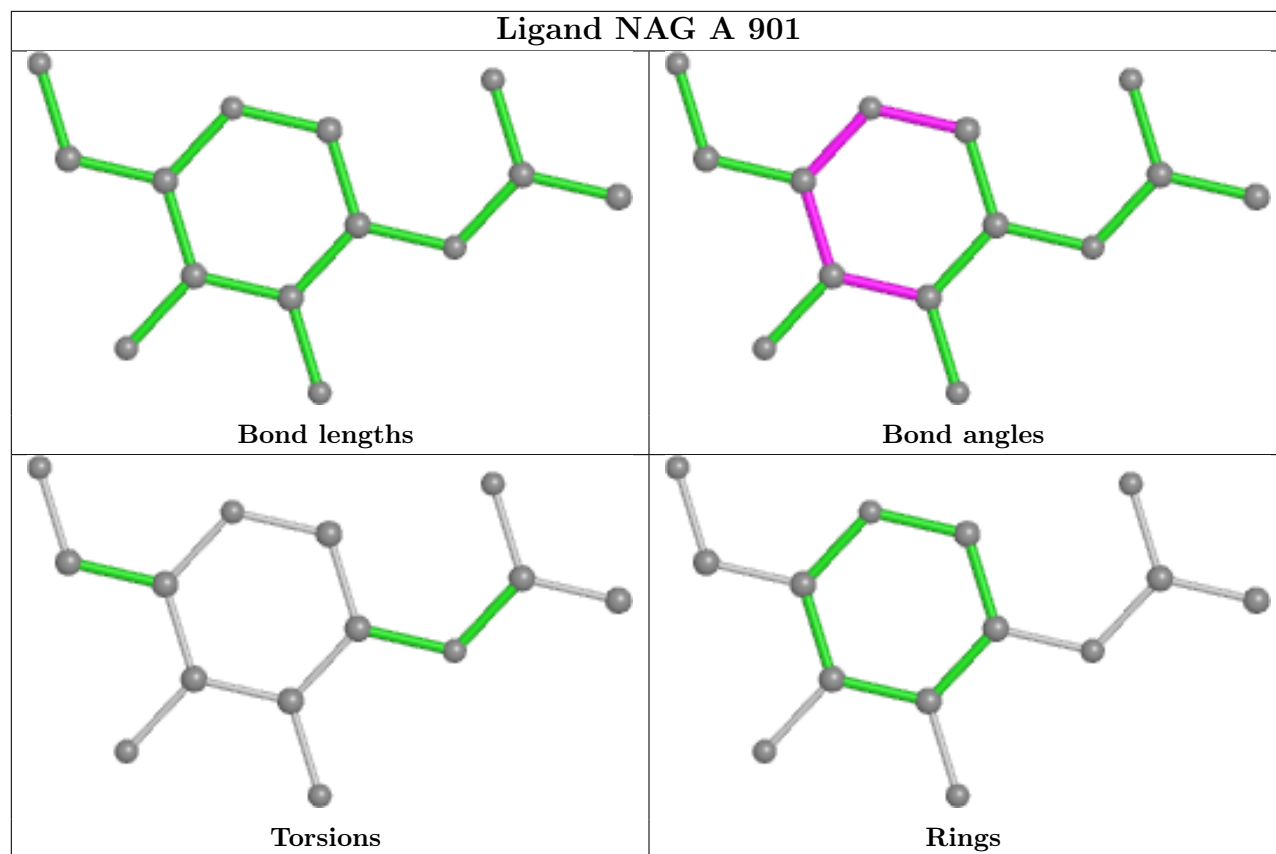
All (2) torsion outliers are listed below:

Mol	Chain	Res	Type	Atoms
2	B	901	NAG	O5-C5-C6-O6
2	B	901	NAG	C4-C5-C6-O6

There are no ring outliers.

No monomer is involved in short contacts.

The following is a two-dimensional graphical depiction of Mogul quality analysis of bond lengths, bond angles, torsion angles, and ring geometry for all instances of the Ligand of Interest. In addition, ligands with molecular weight > 250 and outliers as shown on the validation Tables will also be included. For torsion angles, if less than 5% of the Mogul distribution of torsion angles is within 10 degrees of the torsion angle in question, then that torsion angle is considered an outlier. Any bond that is central to one or more torsion angles identified as an outlier by Mogul will be highlighted in the graph. For rings, the root-mean-square deviation (RMSD) between the ring in question and similar rings identified by Mogul is calculated over all ring torsion angles. If the average RMSD is greater than 60 degrees and the minimal RMSD between the ring in question and any Mogul-identified rings is also greater than 60 degrees, then that ring is considered an outlier. The outliers are highlighted in purple. The color gray indicates Mogul did not find sufficient equivalents in the CSD to analyse the geometry.



5.7 Other polymers [i](#)

There are no such residues in this entry.

5.8 Polymer linkage issues [i](#)

There are no chain breaks in this entry.

6 Fit of model and data

6.1 Protein, DNA and RNA chains

In the following table, the column labelled ‘#RSRZ > 2’ contains the number (and percentage) of RSRZ outliers, followed by percent RSRZ outliers for the chain as percentile scores relative to all X-ray entries and entries of similar resolution. The OWAB column contains the minimum, median, 95th percentile and maximum values of the occupancy-weighted average B-factor per residue. The column labelled ‘Q < 0.9’ lists the number of (and percentage) of residues with an average occupancy less than 0.9.

Mol	Chain	Analysed	<RSRZ>	#RSRZ>2	OWAB(Å ²)	Q<0.9
1	A	421/468 (89%)	0.19	14 (3%) 46 20	45, 55, 74, 90	0
1	B	420/468 (89%)	0.57	42 (10%) 7 2	49, 63, 89, 98	0
All	All	841/936 (89%)	0.38	56 (6%) 17 5	45, 58, 84, 98	0

All (56) RSRZ outliers are listed below:

Mol	Chain	Res	Type	RSRZ
1	B	384	ARG	6.7
1	B	383	GLN	5.7
1	B	382	CYS	4.8
1	B	386	THR	4.8
1	A	241	ARG	4.0
1	B	367	ALA	3.9
1	B	527	ILE	3.9
1	B	559	PRO	3.8
1	B	387	TYR	3.6
1	A	238	ASP	3.5
1	B	587	ASN	3.5
1	B	381	ALA	3.5
1	B	505	LEU	3.3
1	B	311	SER	3.3
1	B	588	SER	3.2
1	A	416	SER	3.1
1	A	186	HIS	3.1
1	B	457	GLY	3.1
1	A	184	PRO	3.0
1	B	390	CYS	3.0
1	B	586	ALA	3.0
1	B	495	GLN	3.0
1	B	389	MET	2.9
1	B	416	SER	2.9

Continued on next page...

Continued from previous page...

Mol	Chain	Res	Type	RSRZ
1	B	583	ALA	2.9
1	B	584	ASN	2.9
1	B	526	ASP	2.9
1	B	401	ARG	2.7
1	B	388	PRO	2.6
1	B	585	ILE	2.6
1	B	385	LYS	2.5
1	B	558	ARG	2.5
1	A	312	GLN	2.4
1	A	584	ASN	2.4
1	B	158	GLY	2.4
1	A	389	MET	2.4
1	B	419	LEU	2.4
1	B	532	HIS	2.4
1	A	187	ARG	2.3
1	B	374	GLN	2.3
1	B	589	THR	2.3
1	A	313	ASP	2.2
1	B	313	ASP	2.2
1	B	601	SER	2.2
1	B	369	ASP	2.2
1	B	221	THR	2.2
1	A	204	SER	2.1
1	B	368	SER	2.1
1	B	557	GLY	2.1
1	A	311	SER	2.1
1	A	418	ASP	2.1
1	B	490	CYS	2.1
1	B	525	TYR	2.1
1	A	314	GLY	2.1
1	B	243	PHE	2.1
1	B	247	GLU	2.0

6.2 Non-standard residues in protein, DNA, RNA chains [i](#)

There are no non-standard protein/DNA/RNA residues in this entry.

6.3 Carbohydrates [i](#)

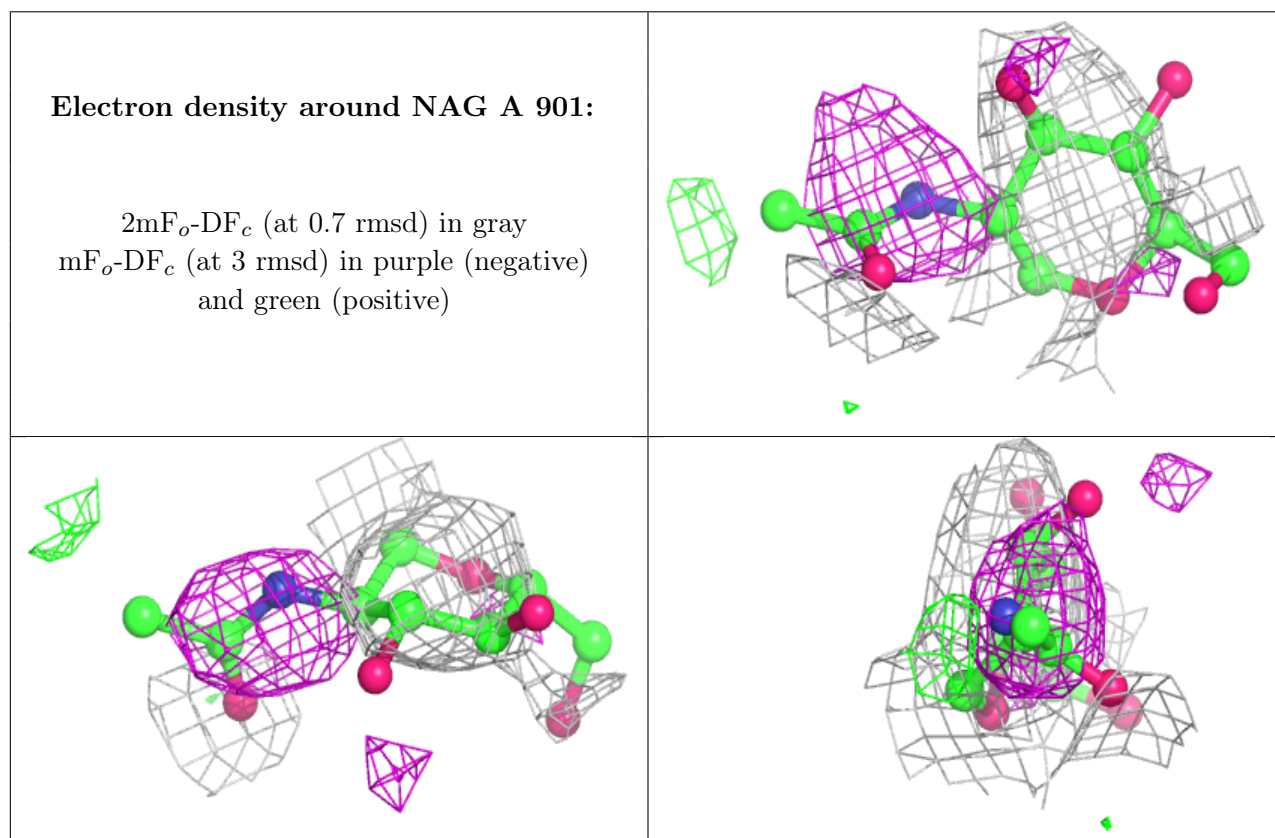
There are no monosaccharides in this entry.

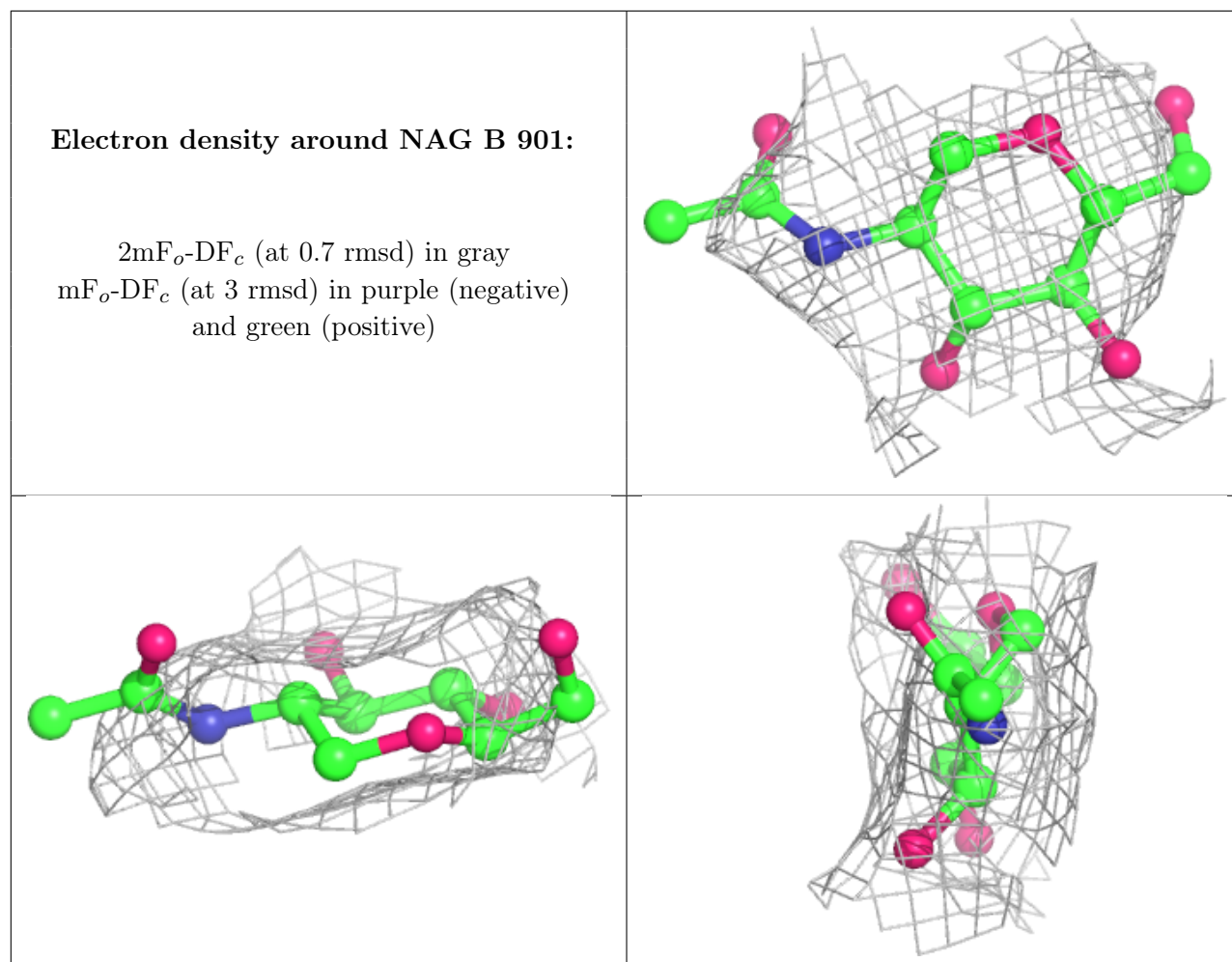
6.4 Ligands [i](#)

In the following table, the Atoms column lists the number of modelled atoms in the group and the number defined in the chemical component dictionary. The B-factors column lists the minimum, median, 95th percentile and maximum values of B factors of atoms in the group. The column labelled 'Q<0.9' lists the number of atoms with occupancy less than 0.9.

Mol	Type	Chain	Res	Atoms	RSCC	RSR	B-factors(Å ²)	Q<0.9
2	NAG	A	901	14/15	0.46	0.78	78,81,82,83	0
2	NAG	B	901	14/15	0.72	0.41	72,75,76,77	0

The following is a graphical depiction of the model fit to experimental electron density of all instances of the Ligand of Interest. In addition, ligands with molecular weight > 250 and outliers as shown on the geometry validation Tables will also be included. Each fit is shown from different orientation to approximate a three-dimensional view.





6.5 Other polymers [i](#)

There are no such residues in this entry.