



Full wwPDB X-ray Structure Validation Report ⓘ

Jul 25, 2023 – 02:24 AM EDT

PDB ID : 9ICA
Title : DNA POLYMERASE BETA (E.C.2.7.7.7)/DNA COMPLEX + 2'-DEOXYADENOSINE-5'-O-(1-THIOTRIPHOSPHATE), SOAKED IN THE PRESENCE OF DATP(ALPHA)S AND MNCL2
Authors : Pelletier, H.; Sawaya, M.R.
Deposited on : 1995-12-15
Resolution : 3.00 Å(reported)

This is a Full wwPDB X-ray Structure Validation Report for a publicly released PDB entry.

We welcome your comments at validation@mail.wwpdb.org

A user guide is available at

<https://www.wwpdb.org/validation/2017/XrayValidationReportHelp>

with specific help available everywhere you see the ⓘ symbol.

The types of validation reports are described at

<http://www.wwpdb.org/validation/2017/FAQs#types>.

The following versions of software and data (see [references ⓘ](#)) were used in the production of this report:

MolProbity : 4.02b-467
Mogul : 1.8.5 (274361), CSD as541be (2020)
Xtriage (Phenix) : 1.13
EDS : 2.34
buster-report : 1.1.7 (2018)
Percentile statistics : 20191225.v01 (using entries in the PDB archive December 25th 2019)
Refmac : 5.8.0158
CCP4 : 7.0.044 (Gargrove)
Ideal geometry (proteins) : Engh & Huber (2001)
Ideal geometry (DNA, RNA) : Parkinson et al. (1996)
Validation Pipeline (wwPDB-VP) : 2.34

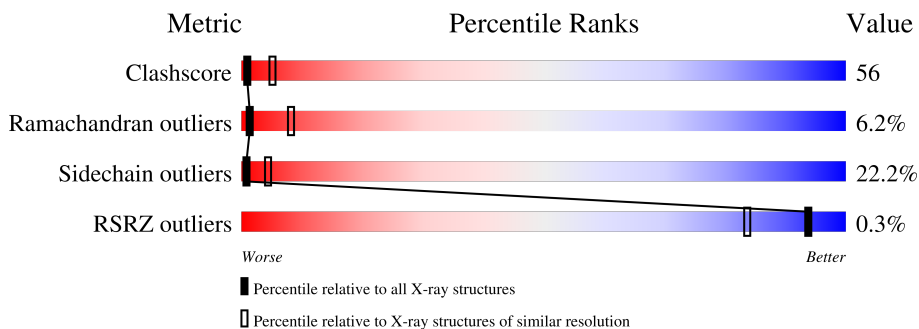
1 Overall quality at a glance

The following experimental techniques were used to determine the structure:

X-RAY DIFFRACTION

The reported resolution of this entry is 3.00 Å.

Percentile scores (ranging between 0-100) for global validation metrics of the entry are shown in the following graphic. The table shows the number of entries on which the scores are based.



Metric	Whole archive (#Entries)	Similar resolution (#Entries, resolution range(Å))
Clashscore	141614	2416 (3.00-3.00)
Ramachandran outliers	138981	2333 (3.00-3.00)
Sidechain outliers	138945	2336 (3.00-3.00)
RSRZ outliers	127900	1990 (3.00-3.00)

The table below summarises the geometric issues observed across the polymeric chains and their fit to the electron density. The red, orange, yellow and green segments of the lower bar indicate the fraction of residues that contain outliers for ≥ 3 , 2, 1 and 0 types of geometric quality criteria respectively. A grey segment represents the fraction of residues that are not modelled. The numeric value for each fraction is indicated below the corresponding segment, with a dot representing fractions $\leq 5\%$. The upper red bar (where present) indicates the fraction of residues that have poor fit to the electron density. The numeric value is given above the bar.

Mol	Chain	Length	Quality of chain
1	T	8	 12% 12% 88%
2	P	7	 100%
3	A	335	 23% 48% 24% . .

2 Entry composition

There are 6 unique types of molecules in this entry. The entry contains 3062 atoms, of which 0 are hydrogens and 0 are deuteriums.

In the tables below, the ZeroOcc column contains the number of atoms modelled with zero occupancy, the AltConf column contains the number of residues with at least one atom in alternate conformation and the Trace column contains the number of residues modelled with at most 2 atoms.

- Molecule 1 is a DNA chain called DNA (5'-D(*CP*AP*TP*TP*AP*GP*AP*A)-3').

Mol	Chain	Residues	Atoms					ZeroOcc	AltConf	Trace
			Total	C	N	O	P			
1	T	8	145	69	27	42	7	0	0	0

- Molecule 2 is a DNA chain called DNA (5'-D(*TP*CP*TP*AP*AP*TP*G)-3').

Mol	Chain	Residues	Atoms					ZeroOcc	AltConf	Trace
			Total	C	N	O	P			
2	P	7	144	69	24	44	7	0	0	0

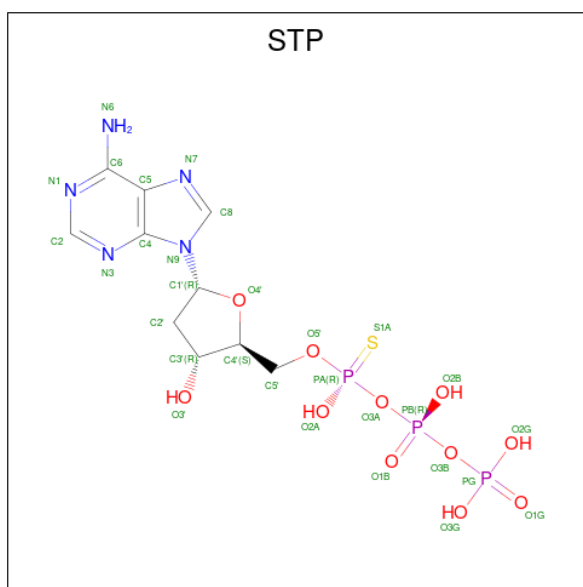
- Molecule 3 is a protein called PROTEIN (DNA POLYMERASE BETA (E.C.2.7.7.7)).

Mol	Chain	Residues	Atoms					ZeroOcc	AltConf	Trace
			Total	C	N	O	S			
3	A	327	2623	1657	458	499	9	18	0	0

- Molecule 4 is MANGANESE (II) ION (three-letter code: MN) (formula: Mn).

Mol	Chain	Residues	Atoms		ZeroOcc	AltConf
			Total	Mn		
4	A	2	2	2	0	0

- Molecule 5 is 2'-DEOXYADENOSINE 5'-O-(1-THIOTRIPHOSPHATE) (three-letter code: STP) (formula: C₁₀H₁₆N₅O₁₁P₃S).



Mol	Chain	Residues	Atoms				ZeroOcc	AltConf
5	A	1	Total	O	P	S	0	0
			13	9	3	1		

- Molecule 6 is water.

Mol	Chain	Residues	Atoms		ZeroOcc	AltConf
6	T	17	Total	O	0	0
			17	17		
6	P	15	Total	O	0	0
			15	15		
6	A	103	Total	O	0	0
			103	103		

3 Residue-property plots [i](#)

These plots are drawn for all protein, RNA, DNA and oligosaccharide chains in the entry. The first graphic for a chain summarises the proportions of the various outlier classes displayed in the second graphic. The second graphic shows the sequence view annotated by issues in geometry and electron density. Residues are color-coded according to the number of geometric quality criteria for which they contain at least one outlier: green = 0, yellow = 1, orange = 2 and red = 3 or more. A red dot above a residue indicates a poor fit to the electron density ($RSRZ > 2$). Stretches of 2 or more consecutive residues without any outlier are shown as a green connector. Residues present in the sample, but not in the model, are shown in grey.

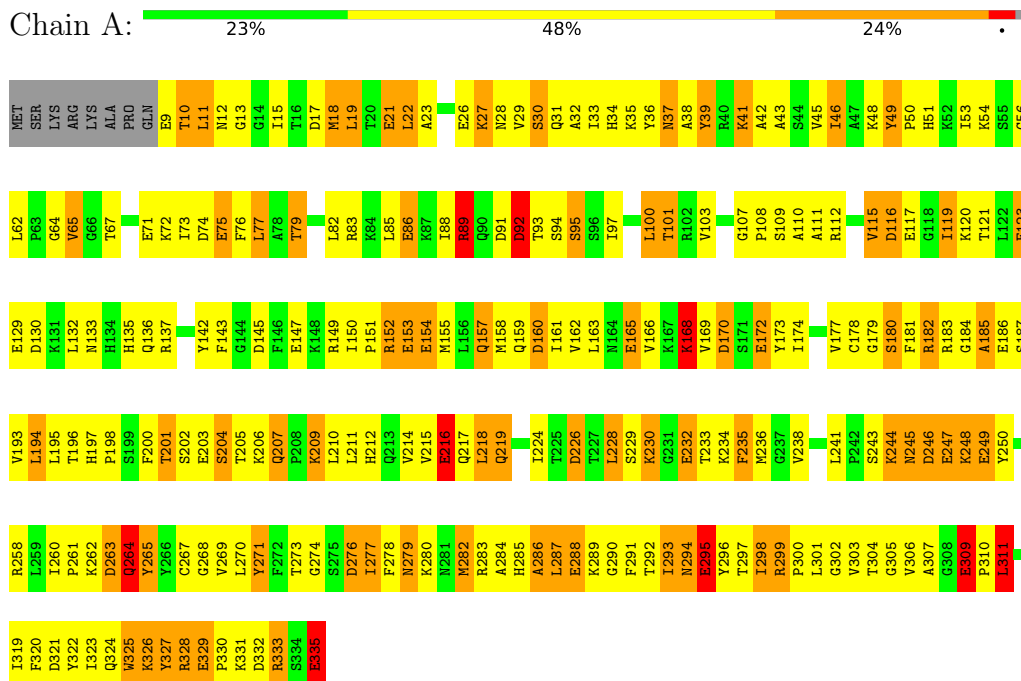
- Molecule 1: DNA (5'-D(*CP*AP*TP*TP*AP*GP*AP*A)-3')



- Molecule 2: DNA (5'-D(*TP*CP*TP*AP*AP*TP*G)-3')



- Molecule 3: PROTEIN (DNA POLYMERASE BETA (E.C.2.7.7.7))



4 Data and refinement statistics

Property	Value	Source
Space group	P 21 21 2	Depositor
Cell constants a, b, c, α , β , γ	178.48Å 57.75Å 48.51Å 90.00° 90.00° 90.00°	Depositor
Resolution (Å)	20.00 – 3.00 11.84 – 2.70	Depositor EDS
% Data completeness (in resolution range)	87.0 (20.00-3.00) 82.8 (11.84-2.70)	Depositor EDS
R_{merge}	(Not available)	Depositor
R_{sym}	5.70	Depositor
$\langle I/\sigma(I) \rangle$ ¹	1.26 (at 2.70Å)	Xtrriage
Refinement program	TNT 5-D	Depositor
R, R_{free}	0.167 , (Not available) 0.164 , (Not available)	Depositor DCC
R_{free} test set	No test flags present.	wwPDB-VP
Wilson B-factor (Å ²)	36.5	Xtrriage
Anisotropy	0.166	Xtrriage
Bulk solvent k_{sol} (e/Å ³), B_{sol} (Å ²)	0.16 , 122.0	EDS
L-test for twinning ²	$\langle L \rangle = 0.45$, $\langle L^2 \rangle = 0.28$	Xtrriage
Estimated twinning fraction	No twinning to report.	Xtrriage
F_o, F_c correlation	0.93	EDS
Total number of atoms	3062	wwPDB-VP
Average B, all atoms (Å ²)	41.0	wwPDB-VP

Xtrriage's analysis on translational NCS is as follows: *The largest off-origin peak in the Patterson function is 5.05% of the height of the origin peak. No significant pseudotranslation is detected.*

¹Intensities estimated from amplitudes.

²Theoretical values of $\langle |L| \rangle$, $\langle L^2 \rangle$ for acentric reflections are 0.5, 0.333 respectively for untwinned datasets, and 0.375, 0.2 for perfectly twinned datasets.

5 Model quality i

5.1 Standard geometry i

Bond lengths and bond angles in the following residue types are not validated in this section: STP, MN

The Z score for a bond length (or angle) is the number of standard deviations the observed value is removed from the expected value. A bond length (or angle) with $|Z| > 5$ is considered an outlier worth inspection. RMSZ is the root-mean-square of all Z scores of the bond lengths (or angles).

Mol	Chain	Bond lengths		Bond angles	
		RMSZ	# Z >5	RMSZ	# Z >5
1	T	2.23	6/162 (3.7%)	3.54	22/249 (8.8%)
2	P	2.63	8/160 (5.0%)	4.34	23/243 (9.5%)
3	A	1.19	26/2672 (1.0%)	1.74	65/3590 (1.8%)
All	All	1.38	40/2994 (1.3%)	2.14	110/4082 (2.7%)

Chiral center outliers are detected by calculating the chiral volume of a chiral center and verifying if the center is modelled as a planar moiety or with the opposite hand. A planarity outlier is detected by checking planarity of atoms in a peptide group, atoms in a mainchain group or atoms of a sidechain that are expected to be planar.

Mol	Chain	#Chirality outliers	#Planarity outliers
3	A	1	0

All (40) bond length outliers are listed below:

Mol	Chain	Res	Type	Atoms	Z	Observed(Å)	Ideal(Å)
2	P	2	DC	C1'-N1	12.89	1.66	1.49
2	P	3	DT	N1-C2	10.69	1.46	1.38
2	P	7	DG	P-O5'	7.62	1.67	1.59
2	P	2	DC	N1-C2	7.27	1.47	1.40
3	A	232	GLU	CD-OE2	7.06	1.33	1.25
3	A	309	GLU	CD-OE2	7.00	1.33	1.25
3	A	165	GLU	CD-OE2	6.98	1.33	1.25
3	A	249	GLU	CD-OE2	6.87	1.33	1.25
2	P	7	DG	C5'-C4'	6.82	1.58	1.51
3	A	329	GLU	CD-OE2	6.71	1.33	1.25
1	T	5	DA	N7-C5	-6.62	1.35	1.39
1	T	1	DC	C3'-O3'	6.62	1.52	1.44
3	A	71	GLU	CD-OE1	6.48	1.32	1.25
3	A	75	GLU	CD-OE1	6.43	1.32	1.25
1	T	5	DA	C5-C6	-6.40	1.35	1.41

Continued on next page...

Continued from previous page...

Mol	Chain	Res	Type	Atoms	Z	Observed(Å)	Ideal(Å)
1	T	6	DG	C3'-O3'	-6.26	1.35	1.44
3	A	295	GLU	CD-OE2	6.26	1.32	1.25
3	A	86	GLU	CD-OE1	6.25	1.32	1.25
1	T	5	DA	C6-N1	6.19	1.39	1.35
3	A	186	GLU	CD-OE1	6.14	1.32	1.25
3	A	335	GLU	CD-OE2	6.12	1.32	1.25
3	A	203	GLU	CD-OE1	6.08	1.32	1.25
3	A	123	GLU	CD-OE1	6.04	1.32	1.25
3	A	153	GLU	CD-OE2	6.04	1.32	1.25
3	A	21	GLU	CD-OE1	6.02	1.32	1.25
3	A	316	GLU	CD-OE2	5.99	1.32	1.25
3	A	216	GLU	CD-OE2	5.97	1.32	1.25
2	P	7	DG	O5'-C5'	5.92	1.57	1.42
3	A	147	GLU	CD-OE2	5.91	1.32	1.25
1	T	7	DA	C1'-N9	-5.89	1.39	1.47
3	A	117	GLU	CD-OE2	5.83	1.32	1.25
3	A	129	GLU	CD-OE1	5.75	1.31	1.25
2	P	6	DT	C4'-C3'	-5.74	1.46	1.52
3	A	172	GLU	CD-OE2	5.71	1.31	1.25
3	A	58	GLU	CD-OE1	5.58	1.31	1.25
3	A	288	GLU	CD-OE2	5.57	1.31	1.25
3	A	154	GLU	CD-OE2	5.51	1.31	1.25
3	A	9	GLU	CD-OE2	5.29	1.31	1.25
3	A	247	GLU	CD-OE1	5.16	1.31	1.25
2	P	3	DT	C1'-N1	5.01	1.55	1.49

All (110) bond angle outliers are listed below:

Mol	Chain	Res	Type	Atoms	Z	Observed(°)	Ideal(°)
2	P	6	DT	C6-N1-C1'	-19.83	90.66	120.40
2	P	6	DT	C2-N1-C1'	19.41	149.25	118.20
2	P	1	DT	C6-N1-C1'	-18.69	92.36	120.40
1	T	4	DT	C6-N1-C1'	-18.68	92.37	120.40
1	T	4	DT	C2-N1-C1'	17.97	146.96	118.20
2	P	2	DC	C2-N1-C1'	17.68	138.25	118.80
2	P	1	DT	C2-N1-C1'	17.26	145.81	118.20
1	T	6	DG	C8-N9-C1'	17.01	149.11	127.00
1	T	6	DG	C4-N9-C1'	-15.65	106.16	126.50
2	P	3	DT	C2-N1-C1'	15.51	143.02	118.20
2	P	3	DT	C6-N1-C1'	-15.48	97.18	120.40
1	T	7	DA	C4-N9-C1'	-15.21	98.92	126.30
2	P	7	DG	C8-N9-C1'	14.42	145.75	127.00

Continued on next page...

Continued from previous page...

Mol	Chain	Res	Type	Atoms	Z	Observed(°)	Ideal(°)
2	P	7	DG	C4-N9-C1'	-14.19	108.05	126.50
1	T	7	DA	C8-N9-C1'	13.79	152.53	127.70
2	P	2	DC	C6-N1-C1'	-12.74	105.52	120.80
1	T	5	DA	N1-C6-N6	11.85	125.71	118.60
3	A	124	ASP	CB-CG-OD2	-11.55	107.91	118.30
3	A	253	ARG	NE-CZ-NH1	11.53	126.06	120.30
3	A	39	TYR	CB-CG-CD1	-11.38	114.17	121.00
2	P	3	DT	N3-C2-O2	-10.89	115.76	122.30
2	P	2	DC	C6-N1-C2	-10.16	116.24	120.30
1	T	1	DC	P-O3'-C3'	9.35	130.91	119.70
3	A	124	ASP	CB-CG-OD1	9.18	126.56	118.30
2	P	3	DT	O4'-C1'-N1	8.88	114.22	108.00
3	A	253	ARG	NE-CZ-NH2	-8.83	115.89	120.30
3	A	39	TYR	CB-CG-CD2	8.72	126.23	121.00
2	P	5	DA	C4-N9-C1'	8.70	141.95	126.30
2	P	5	DA	C8-N9-C1'	-8.29	112.78	127.70
3	A	333	ARG	NE-CZ-NH1	8.25	124.43	120.30
3	A	258	ARG	NE-CZ-NH1	8.07	124.34	120.30
2	P	2	DC	O4'-C1'-N1	7.89	113.53	108.00
3	A	263	ASP	CB-CG-OD2	-7.67	111.39	118.30
2	P	1	DT	P-O3'-C3'	7.43	128.61	119.70
3	A	145	ASP	CB-CG-OD2	-7.25	111.77	118.30
3	A	130	ASP	CB-CG-OD2	-7.22	111.80	118.30
2	P	3	DT	O4'-C1'-C2'	-7.18	100.15	105.90
3	A	91	ASP	CB-CG-OD1	-7.08	111.93	118.30
3	A	116	ASP	CB-CG-OD1	-7.05	111.95	118.30
3	A	130	ASP	CB-CG-OD1	6.88	124.49	118.30
1	T	7	DA	C8-N9-C4	6.84	108.54	105.80
3	A	190	ASP	CB-CG-OD2	-6.81	112.17	118.30
1	T	5	DA	N9-C4-C5	-6.80	103.08	105.80
3	A	311	LEU	C-N-CD	-6.74	105.78	120.60
3	A	326	LYS	CD-CE-NZ	6.73	127.19	111.70
3	A	192	ASP	CB-CG-OD2	-6.72	112.26	118.30
3	A	256	ASP	CB-CG-OD1	6.70	124.33	118.30
1	T	6	DG	P-O3'-C3'	6.69	127.73	119.70
3	A	116	ASP	CB-CA-C	6.64	123.67	110.40
3	A	126	ARG	NE-CZ-NH1	6.63	123.61	120.30
3	A	89	ARG	NE-CZ-NH1	6.59	123.59	120.30
3	A	157	GLN	N-CA-CB	6.59	122.46	110.60
2	P	2	DC	N3-C2-O2	-6.47	117.37	121.90
2	P	2	DC	P-O3'-C3'	6.45	127.44	119.70
3	A	92	ASP	CB-CG-OD1	6.36	124.02	118.30

Continued on next page...

Continued from previous page...

Mol	Chain	Res	Type	Atoms	Z	Observed(°)	Ideal(°)
1	T	5	DA	C6-C5-N7	-6.34	127.86	132.30
3	A	116	ASP	N-CA-CB	6.33	122.00	110.60
3	A	126	ARG	NE-CZ-NH2	-6.30	117.15	120.30
1	T	7	DA	O4'-C1'-N9	-6.28	103.60	108.00
3	A	160	ASP	CB-CG-OD2	-6.26	112.66	118.30
3	A	91	ASP	CB-CG-OD2	6.26	123.93	118.30
3	A	116	ASP	CB-CG-OD2	6.24	123.92	118.30
3	A	256	ASP	CB-CG-OD2	-6.21	112.72	118.30
3	A	145	ASP	CB-CG-OD1	6.15	123.84	118.30
3	A	333	ARG	NE-CZ-NH2	-6.10	117.25	120.30
3	A	192	ASP	CB-CA-C	-6.08	98.24	110.40
3	A	299	ARG	NE-CZ-NH1	6.06	123.33	120.30
3	A	246	ASP	CB-CG-OD1	-6.05	112.85	118.30
3	A	332	ASP	CB-CG-OD1	-6.00	112.90	118.30
2	P	4	DA	C1'-O4'-C4'	-5.99	104.11	110.10
3	A	271	TYR	CA-CB-CG	-5.97	102.06	113.40
3	A	170	ASP	N-CA-CB	5.96	121.33	110.60
3	A	74	ASP	CB-CG-OD1	5.88	123.59	118.30
2	P	3	DT	P-O3'-C3'	5.84	126.71	119.70
3	A	314	ASP	CB-CG-OD2	5.84	123.55	118.30
3	A	224	ILE	CA-CB-CG1	-5.80	99.98	111.00
1	T	5	DA	C4-C5-N7	5.80	113.60	110.70
3	A	271	TYR	N-CA-CB	-5.79	100.19	110.60
1	T	4	DT	O4'-C1'-N1	5.76	112.03	108.00
3	A	271	TYR	CB-CG-CD1	-5.75	117.55	121.00
3	A	264	GLN	N-CA-CB	5.74	120.94	110.60
3	A	276	ASP	CB-CG-OD2	-5.71	113.16	118.30
3	A	314	ASP	CB-CG-OD1	-5.70	113.17	118.30
1	T	2	DA	C4-N9-C1'	-5.70	116.05	126.30
3	A	335	GLU	N-CA-CB	5.68	120.83	110.60
3	A	328	ARG	NE-CZ-NH1	5.67	123.13	120.30
3	A	168	LYS	N-CA-CB	5.66	120.78	110.60
3	A	92	ASP	N-CA-CB	5.62	120.72	110.60
3	A	332	ASP	CB-CG-OD2	5.60	123.34	118.30
3	A	49	TYR	C-N-CD	-5.52	108.45	120.60
3	A	92	ASP	CB-CG-OD2	-5.51	113.34	118.30
1	T	5	DA	C5-C6-N6	-5.50	119.30	123.70
3	A	51	HIS	CA-CB-CG	5.48	122.92	113.60
3	A	115	VAL	CA-CB-CG1	-5.47	102.70	110.90
3	A	246	ASP	CB-CG-OD2	5.44	123.19	118.30
1	T	5	DA	C5-C6-N1	-5.42	114.99	117.70
3	A	258	ARG	NE-CZ-NH2	-5.35	117.62	120.30

Continued on next page...

Continued from previous page...

Mol	Chain	Res	Type	Atoms	Z	Observed(°)	Ideal(°)
3	A	315	SER	N-CA-CB	5.34	118.52	110.50
1	T	4	DT	N1-C1'-C2'	5.29	122.65	112.60
3	A	219	GLN	CB-CA-C	-5.20	100.00	110.40
3	A	86	GLU	N-CA-CB	5.15	119.87	110.60
1	T	5	DA	C2-N3-C4	-5.13	108.03	110.60
3	A	17	ASP	CB-CG-OD1	-5.13	113.68	118.30
2	P	3	DT	C5-C6-N1	-5.13	120.62	123.70
3	A	170	ASP	CB-CG-OD2	-5.12	113.69	118.30
3	A	170	ASP	CB-CG-OD1	5.11	122.90	118.30
1	T	3	DT	O4'-C1'-N1	5.10	111.57	108.00
3	A	59	ALA	CA-C-N	-5.06	106.08	117.20
1	T	2	DA	C8-N9-C1'	5.05	136.78	127.70
3	A	226	ASP	CB-CG-OD2	-5.02	113.78	118.30

All (1) chirality outliers are listed below:

Mol	Chain	Res	Type	Atom
3	A	116	ASP	CA

There are no planarity outliers.

5.2 Too-close contacts

In the following table, the Non-H and H(model) columns list the number of non-hydrogen atoms and hydrogen atoms in the chain respectively. The H(added) column lists the number of hydrogen atoms added and optimized by MolProbity. The Clashes column lists the number of clashes within the asymmetric unit, whereas Symm-Clashes lists symmetry-related clashes.

Mol	Chain	Non-H	H(model)	H(added)	Clashes	Symm-Clashes
1	T	145	0	80	8	0
2	P	144	0	81	15	0
3	A	2623	0	2641	292	0
4	A	2	0	0	0	0
5	A	13	0	0	5	0
6	A	103	0	0	17	0
6	P	15	0	0	2	0
6	T	17	0	0	2	0
All	All	3062	0	2802	312	0

The all-atom clashscore is defined as the number of clashes found per 1000 atoms (including hydrogen atoms). The all-atom clashscore for this structure is 56.

All (312) close contacts within the same asymmetric unit are listed below, sorted by their clash magnitude.

Atom-1	Atom-2	Interatomic distance (Å)	Clash overlap (Å)
5:A:338:STP:S1A	5:A:338:STP:PA	1.49	1.48
3:A:293:ILE:HD13	3:A:298:ILE:HG13	1.27	1.10
3:A:29:VAL:HG21	3:A:94:SER:HB2	1.33	1.09
3:A:151:PRO:HG2	3:A:154:GLU:HG3	1.30	1.06
3:A:31:GLN:NE2	3:A:112:ARG:HH12	1.57	1.02
3:A:73:ILE:HG22	3:A:77:LEU:HD22	1.44	0.97
3:A:11:LEU:HD23	3:A:11:LEU:H	1.30	0.96
3:A:31:GLN:HE21	3:A:112:ARG:NH1	1.64	0.95
3:A:245:ASN:N	3:A:245:ASN:HD22	1.58	0.94
3:A:178:CYS:SG	3:A:194:LEU:HD23	2.11	0.90
3:A:245:ASN:HD22	3:A:245:ASN:H	0.91	0.89
3:A:151:PRO:HB2	3:A:153:GLU:HG2	1.59	0.85
3:A:245:ASN:H	3:A:245:ASN:ND2	1.73	0.85
2:P:5:DA:H2''	2:P:6:DT:C5'	2.06	0.83
3:A:260:ILE:HG23	3:A:261:PRO:HD2	1.61	0.82
3:A:41:LYS:HE2	3:A:64:GLY:HA2	1.59	0.82
2:P:5:DA:H2''	2:P:6:DT:H5''	1.61	0.81
3:A:60:LYS:HA	3:A:65:VAL:HG23	1.62	0.81
3:A:293:ILE:CD1	3:A:298:ILE:HG13	2.09	0.80
3:A:41:LYS:HD3	3:A:42:ALA:N	1.97	0.80
3:A:212:HIS:HB3	6:A:541:HOH:O	1.82	0.80
3:A:278:PHE:CE2	3:A:333:ARG:HD2	2.16	0.80
3:A:108:PRO:O	3:A:112:ARG:HG3	1.83	0.79
3:A:151:PRO:HG2	3:A:154:GLU:CG	2.11	0.79
3:A:165:GLU:HA	3:A:168:LYS:HG2	1.65	0.78
3:A:330:PRO:HA	3:A:333:ARG:CG	2.13	0.78
3:A:111:ALA:O	3:A:115:VAL:HG23	1.85	0.77
3:A:277:ILE:HG12	3:A:335:GLU:HA	1.67	0.76
3:A:12:ASN:HA	6:A:553:HOH:O	1.87	0.75
3:A:60:LYS:HA	3:A:65:VAL:CG2	2.17	0.75
6:T:617:HOH:O	3:A:234:LYS:HD3	1.86	0.74
3:A:207:GLN:O	3:A:210:LEU:HB2	1.88	0.74
3:A:201:THR:HA	3:A:261:PRO:HB2	1.70	0.73
3:A:15:ILE:HD11	3:A:77:LEU:HD11	1.70	0.73
3:A:201:THR:HA	3:A:261:PRO:CB	2.19	0.72
3:A:18:MET:CE	3:A:82:LEU:HD13	2.19	0.72
3:A:23:ALA:HB2	3:A:39:TYR:HB3	1.71	0.72
2:P:1:DT:H2''	2:P:2:DC:H5'	1.70	0.71
3:A:302:GLY:H	3:A:307:ALA:HB3	1.55	0.71
3:A:254:ARG:NH1	3:A:255:ILE:N	2.38	0.71

Continued on next page...

Continued from previous page...

Atom-1	Atom-2	Interatomic distance (Å)	Clash overlap (Å)
3:A:191:MET:HG2	3:A:255:ILE:HG13	1.73	0.70
3:A:327:TYR:HE1	3:A:333:ARG:HH21	1.39	0.70
3:A:253:ARG:HG3	3:A:253:ARG:HH11	1.56	0.70
3:A:18:MET:HE2	3:A:82:LEU:HD13	1.73	0.69
3:A:31:GLN:HE21	3:A:112:ARG:HH12	0.79	0.69
3:A:73:ILE:HG22	3:A:77:LEU:CD2	2.20	0.69
3:A:29:VAL:CG2	3:A:94:SER:HB2	2.19	0.69
3:A:323:ILE:O	3:A:324:GLN:HG2	1.93	0.68
2:P:5:DA:H2''	2:P:6:DT:H5'	1.74	0.68
3:A:181:PHE:HA	6:A:530:HOH:O	1.94	0.68
3:A:279:ASN:O	3:A:283:ARG:HG3	1.94	0.68
3:A:294:ASN:O	3:A:296:TYR:N	2.26	0.68
3:A:302:GLY:N	3:A:307:ALA:HB3	2.08	0.68
3:A:41:LYS:HE2	3:A:64:GLY:CA	2.23	0.67
3:A:155:MET:HA	3:A:158:MET:HE3	1.76	0.67
3:A:268:GLY:O	3:A:271:TYR:HB3	1.94	0.67
3:A:59:ALA:O	3:A:62:LEU:HB2	1.95	0.67
2:P:3:DT:H4'	6:P:569:HOH:O	1.95	0.67
3:A:165:GLU:HB3	3:A:217:GLN:HG3	1.78	0.66
3:A:306:VAL:HG22	6:A:650:HOH:O	1.95	0.66
3:A:286:ALA:CB	3:A:293:ILE:HD11	2.26	0.66
3:A:330:PRO:HA	3:A:333:ARG:HG3	1.76	0.66
3:A:35:LYS:O	3:A:38:ALA:HB3	1.96	0.65
6:P:568:HOH:O	3:A:110:ALA:HB2	1.95	0.65
3:A:152:ARG:NE	3:A:184:GLY:O	2.29	0.64
3:A:11:LEU:H	3:A:11:LEU:CD2	2.08	0.64
3:A:180:SER:HB3	3:A:183:ARG:HH21	1.61	0.64
3:A:23:ALA:HB2	3:A:39:TYR:CB	2.27	0.64
3:A:265:TYR:O	3:A:269:VAL:N	2.27	0.64
3:A:278:PHE:HB2	3:A:333:ARG:O	1.98	0.64
3:A:165:GLU:HA	3:A:168:LYS:CG	2.29	0.63
3:A:182:ARG:NH1	3:A:273:THR:OG1	2.31	0.63
3:A:302:GLY:HA3	3:A:307:ALA:HB2	1.81	0.63
3:A:82:LEU:HB3	3:A:85:LEU:HB2	1.80	0.63
3:A:177:VAL:HG22	3:A:193:VAL:HG22	1.80	0.63
3:A:292:THR:O	3:A:298:ILE:HA	1.98	0.63
3:A:293:ILE:HD13	3:A:298:ILE:CG1	2.18	0.62
3:A:330:PRO:HA	3:A:333:ARG:HG2	1.81	0.62
3:A:277:ILE:HD13	3:A:277:ILE:H	1.64	0.62
3:A:323:ILE:C	3:A:324:GLN:HG2	2.20	0.62
3:A:270:LEU:HA	3:A:316:GLU:OE2	2.00	0.62

Continued on next page...

Continued from previous page...

Atom-1	Atom-2	Interatomic distance (Å)	Clash overlap (Å)
3:A:33:ILE:HG23	3:A:34:HIS:H	1.65	0.62
3:A:33:ILE:HG23	3:A:34:HIS:N	2.15	0.62
3:A:291:PHE:CD1	3:A:300:PRO:HA	2.34	0.61
5:A:338:STP:S1A	5:A:338:STP:O5'	2.53	0.61
3:A:119:ILE:HG23	3:A:124:ASP:HB3	1.81	0.61
3:A:260:ILE:CG2	3:A:261:PRO:HD2	2.29	0.61
3:A:48:LYS:O	3:A:50:PRO:HD3	2.00	0.61
3:A:75:GLU:O	3:A:79:THR:HG23	2.01	0.60
3:A:261:PRO:HG2	3:A:264:GLN:HG3	1.82	0.60
3:A:276:ASP:O	3:A:280:LYS:HG3	2.02	0.60
3:A:282:MET:O	3:A:282:MET:HG3	1.97	0.60
3:A:248:LYS:O	3:A:248:LYS:HG2	2.01	0.59
5:A:338:STP:S1A	5:A:338:STP:O3A	2.55	0.59
3:A:165:GLU:O	3:A:168:LYS:HG2	2.01	0.59
3:A:295:GLU:HA	6:A:592:HOH:O	2.02	0.59
3:A:327:TYR:HD1	3:A:328:ARG:N	2.01	0.59
1:T:6:DG:H2''	1:T:7:DA:C8	2.38	0.59
3:A:82:LEU:HD23	3:A:85:LEU:HB2	1.83	0.59
3:A:180:SER:HA	3:A:183:ARG:HE	1.67	0.59
3:A:188:SER:HB3	6:A:522:HOH:O	2.02	0.59
3:A:286:ALA:O	3:A:291:PHE:N	2.36	0.59
3:A:291:PHE:HD2	3:A:323:ILE:HG22	1.67	0.59
3:A:245:ASN:N	3:A:245:ASN:ND2	2.35	0.58
3:A:200:PHE:CD2	3:A:261:PRO:HA	2.37	0.58
3:A:300:PRO:HD3	3:A:311:LEU:HD13	1.84	0.58
3:A:124:ASP:O	3:A:128:ASN:ND2	2.37	0.58
3:A:18:MET:O	3:A:21:GLU:HB2	2.04	0.58
3:A:82:LEU:HD23	3:A:85:LEU:HD22	1.86	0.58
3:A:29:VAL:HG21	3:A:94:SER:CB	2.21	0.58
3:A:197:HIS:CD2	3:A:198:PRO:HD2	2.38	0.58
3:A:241:LEU:HB2	3:A:250:TYR:CD2	2.39	0.58
3:A:152:ARG:HA	3:A:155:MET:HB2	1.84	0.58
3:A:254:ARG:HH11	3:A:254:ARG:HA	1.69	0.58
3:A:172:GLU:CG	3:A:198:PRO:HG2	2.35	0.57
3:A:18:MET:HG3	3:A:82:LEU:HD22	1.86	0.57
3:A:41:LYS:NZ	3:A:64:GLY:O	2.30	0.57
3:A:155:MET:HE1	3:A:188:SER:HB2	1.87	0.57
3:A:33:ILE:O	3:A:37:ASN:HB2	2.05	0.57
3:A:174:ILE:O	3:A:195:LEU:HD12	2.04	0.57
3:A:119:ILE:N	3:A:119:ILE:HD13	2.20	0.57
2:P:5:DA:OP2	3:A:109:SER:HB3	2.05	0.56

Continued on next page...

Continued from previous page...

Atom-1	Atom-2	Interatomic distance (Å)	Clash overlap (Å)
3:A:133:ASN:O	3:A:137:ARG:HG3	2.05	0.56
3:A:282:MET:HG2	6:A:555:HOH:O	2.04	0.56
3:A:152:ARG:NH2	3:A:181:PHE:O	2.33	0.56
3:A:12:ASN:HD21	3:A:53:ILE:H	1.53	0.56
3:A:254:ARG:NH2	3:A:256:ASP:OD1	2.29	0.56
3:A:299:ARG:HG2	3:A:310:PRO:N	2.19	0.56
2:P:5:DA:P	3:A:109:SER:HB3	2.46	0.56
3:A:18:MET:HE2	3:A:82:LEU:CD1	2.35	0.56
2:P:1:DT:H2''	2:P:2:DC:C5'	2.36	0.56
3:A:11:LEU:HD23	3:A:11:LEU:N	2.09	0.55
3:A:103:VAL:HG22	3:A:143:PHE:CD2	2.42	0.55
3:A:254:ARG:NH1	3:A:255:ILE:H	2.03	0.55
3:A:180:SER:CB	3:A:183:ARG:HH21	2.19	0.55
3:A:292:THR:HG22	3:A:299:ARG:O	2.06	0.55
3:A:30:SER:HA	6:A:558:HOH:O	2.07	0.54
3:A:255:ILE:HG12	3:A:256:ASP:N	2.22	0.54
3:A:254:ARG:HH11	3:A:255:ILE:N	2.05	0.54
3:A:277:ILE:HG13	3:A:335:GLU:HB2	1.87	0.54
3:A:120:LYS:N	3:A:124:ASP:OD2	2.31	0.54
3:A:254:ARG:HH11	3:A:254:ARG:CA	2.19	0.54
3:A:41:LYS:O	3:A:45:VAL:HG13	2.08	0.54
3:A:286:ALA:HB1	3:A:293:ILE:HD11	1.88	0.54
3:A:189:GLY:H	5:A:338:STP:PG	2.31	0.53
3:A:286:ALA:HB2	3:A:293:ILE:HD11	1.89	0.53
3:A:326:LYS:O	3:A:328:ARG:HG2	2.08	0.53
3:A:119:ILE:HG23	3:A:124:ASP:CB	2.38	0.53
3:A:250:TYR:HB3	6:A:577:HOH:O	2.08	0.53
3:A:264:GLN:NE2	3:A:296:TYR:HB3	2.23	0.53
3:A:271:TYR:HB2	6:A:592:HOH:O	2.09	0.53
3:A:172:GLU:HG3	3:A:198:PRO:HG2	1.91	0.53
3:A:182:ARG:NH1	3:A:273:THR:HG21	2.24	0.53
3:A:165:GLU:O	3:A:168:LYS:N	2.42	0.52
3:A:200:PHE:O	3:A:262:LYS:N	2.40	0.52
3:A:286:ALA:HA	3:A:323:ILE:HG21	1.92	0.52
3:A:155:MET:CE	3:A:188:SER:HB2	2.39	0.52
3:A:180:SER:HB3	3:A:183:ARG:NH2	2.23	0.52
3:A:277:ILE:CG1	3:A:335:GLU:HB2	2.40	0.52
3:A:288:GLU:C	3:A:290:GLY:H	2.13	0.52
3:A:182:ARG:HH11	3:A:273:THR:CG2	2.23	0.52
3:A:298:ILE:HA	6:A:593:HOH:O	2.09	0.52
3:A:92:ASP:HB3	6:A:647:HOH:O	2.10	0.52

Continued on next page...

Continued from previous page...

Atom-1	Atom-2	Interatomic distance (Å)	Clash overlap (Å)
3:A:291:PHE:HD1	3:A:300:PRO:HA	1.73	0.52
3:A:18:MET:HE3	3:A:76:PHE:HB2	1.92	0.52
3:A:212:HIS:N	3:A:212:HIS:CD2	2.77	0.52
3:A:293:ILE:HA	6:A:593:HOH:O	2.09	0.51
3:A:150:ILE:HG21	3:A:158:MET:CE	2.40	0.51
3:A:159:GLN:HG2	3:A:160:ASP:N	2.19	0.51
2:P:5:DA:C2'	2:P:6:DT:H5''	2.37	0.51
1:T:4:DT:O2	2:P:4:DA:H2	1.94	0.51
3:A:278:PHE:HE1	3:A:325:TRP:HZ3	1.58	0.51
3:A:150:ILE:CD1	3:A:253:ARG:HG2	2.41	0.51
3:A:76:PHE:O	3:A:79:THR:O	2.29	0.50
3:A:83:ARG:O	3:A:86:GLU:N	2.44	0.50
3:A:316:GLU:O	3:A:320:PHE:HD2	1.93	0.50
3:A:197:HIS:CG	3:A:198:PRO:HD2	2.47	0.50
3:A:18:MET:CE	3:A:76:PHE:HB2	2.42	0.50
3:A:209:LYS:HA	3:A:212:HIS:HB2	1.93	0.50
2:P:6:DT:H2''	2:P:7:DG:H5''	1.93	0.50
3:A:27:LYS:HB2	3:A:36:TYR:CD1	2.47	0.50
5:A:338:STP:S1A	5:A:338:STP:O2A	2.53	0.50
3:A:195:LEU:O	3:A:260:ILE:N	2.43	0.50
3:A:291:PHE:CD2	3:A:323:ILE:HG22	2.47	0.50
3:A:267:CYS:O	3:A:271:TYR:HB2	2.11	0.50
3:A:330:PRO:O	3:A:333:ARG:HG2	2.11	0.50
3:A:32:ALA:O	3:A:36:TYR:HB3	2.12	0.49
3:A:162:VAL:O	3:A:166:VAL:HG23	2.12	0.49
3:A:211:LEU:HB3	3:A:212:HIS:HD2	1.77	0.49
3:A:212:HIS:CD2	3:A:212:HIS:H	2.29	0.49
3:A:297:THR:HG22	6:A:626:HOH:O	2.10	0.49
3:A:319:ILE:O	3:A:322:TYR:HB2	2.12	0.49
3:A:26:GLU:HB3	3:A:32:ALA:HB3	1.94	0.49
3:A:157:GLN:O	3:A:160:ASP:HB3	2.11	0.49
3:A:170:ASP:HB3	3:A:173:TYR:CD2	2.47	0.49
3:A:18:MET:CG	3:A:82:LEU:HD22	2.42	0.49
3:A:83:ARG:HA	3:A:86:GLU:HG2	1.95	0.49
3:A:150:ILE:HG12	3:A:253:ARG:HG2	1.92	0.49
3:A:19:LEU:HB3	3:A:43:ALA:HB2	1.94	0.49
3:A:243:SER:O	3:A:244:LYS:O	2.30	0.49
3:A:286:ALA:O	3:A:291:PHE:HB2	2.13	0.49
3:A:310:PRO:HB3	6:A:626:HOH:O	2.11	0.49
3:A:93:THR:HG22	3:A:94:SER:N	2.24	0.49
3:A:311:LEU:HB3	3:A:322:TYR:CE2	2.48	0.49

Continued on next page...

Continued from previous page...

Atom-1	Atom-2	Interatomic distance (Å)	Clash overlap (Å)
3:A:194:LEU:HB3	3:A:265:TYR:CE1	2.47	0.48
3:A:200:PHE:C	3:A:201:THR:HG22	2.34	0.48
3:A:89:ARG:HD3	3:A:89:ARG:C	2.32	0.48
3:A:92:ASP:HA	3:A:95:SER:HB2	1.95	0.48
3:A:150:ILE:HG21	3:A:158:MET:HE1	1.95	0.48
3:A:23:ALA:O	3:A:36:TYR:HD1	1.97	0.48
3:A:97:ILE:O	3:A:101:THR:HB	2.14	0.48
3:A:321:ASP:O	3:A:324:GLN:N	2.46	0.48
2:P:6:DT:H6	2:P:6:DT:H2'	1.13	0.48
3:A:123:GLU:O	3:A:126:ARG:N	2.47	0.48
3:A:31:GLN:NE2	3:A:112:ARG:NH1	2.40	0.48
3:A:159:GLN:HG3	3:A:163:LEU:HD12	1.96	0.48
3:A:299:ARG:HG2	3:A:310:PRO:CA	2.44	0.48
3:A:182:ARG:NH1	3:A:182:ARG:HG2	2.29	0.48
3:A:196:THR:OG1	3:A:262:LYS:HA	2.14	0.47
3:A:216:GLU:HA	3:A:219:GLN:OE1	2.13	0.47
3:A:286:ALA:HA	3:A:323:ILE:CG2	2.45	0.47
3:A:287:LEU:HD13	3:A:287:LEU:HA	1.63	0.47
3:A:328:ARG:O	3:A:333:ARG:NE	2.27	0.47
3:A:295:GLU:N	3:A:295:GLU:OE1	2.47	0.47
3:A:320:PHE:HD1	3:A:325:TRP:HB3	1.78	0.47
3:A:27:LYS:CB	3:A:36:TYR:CD1	2.97	0.47
3:A:255:ILE:HG23	3:A:255:ILE:O	2.14	0.47
3:A:299:ARG:HG2	3:A:310:PRO:HA	1.96	0.47
3:A:330:PRO:CA	3:A:333:ARG:HG2	2.45	0.47
3:A:142:TYR:CE2	3:A:238:VAL:HG11	2.50	0.47
3:A:207:GLN:OE1	3:A:210:LEU:HG	2.14	0.47
1:T:6:DG:C2'	1:T:7:DA:C8	2.98	0.46
3:A:85:LEU:HD12	3:A:85:LEU:HA	1.54	0.46
3:A:133:ASN:HD21	3:A:135:HIS:HB3	1.78	0.46
3:A:57:ALA:HA	3:A:60:LYS:HB3	1.98	0.46
3:A:28:ASN:HD22	3:A:28:ASN:HA	1.36	0.46
3:A:72:LYS:HG2	3:A:82:LEU:HD11	1.97	0.46
3:A:41:LYS:HD3	3:A:42:ALA:H	1.80	0.46
3:A:180:SER:O	3:A:185:ALA:HB3	2.16	0.46
3:A:274:GLY:O	3:A:278:PHE:HD2	1.97	0.46
3:A:278:PHE:HE1	3:A:325:TRP:CZ3	2.34	0.46
3:A:309:GLU:HA	3:A:310:PRO:HD2	1.81	0.46
3:A:165:GLU:OE1	3:A:217:GLN:OE1	2.34	0.46
3:A:299:ARG:HA	3:A:300:PRO:HD3	1.91	0.46
3:A:278:PHE:O	3:A:282:MET:N	2.41	0.46

Continued on next page...

Continued from previous page...

Atom-1	Atom-2	Interatomic distance (Å)	Clash overlap (Å)
3:A:49:TYR:CE2	3:A:53:ILE:HG12	2.51	0.46
3:A:278:PHE:CE1	3:A:325:TRP:HZ3	2.34	0.46
3:A:31:GLN:N	6:A:641:HOH:O	2.37	0.45
3:A:172:GLU:HG2	3:A:198:PRO:HG2	1.99	0.45
3:A:82:LEU:CD2	3:A:85:LEU:HD22	2.46	0.45
3:A:320:PHE:CE1	3:A:328:ARG:HG3	2.52	0.45
2:P:5:DA:P	3:A:107:GLY:HA3	2.57	0.45
3:A:22:LEU:HD21	3:A:82:LEU:HD21	1.98	0.45
3:A:149:ARG:NH2	3:A:188:SER:HA	2.32	0.45
3:A:119:ILE:HG22	3:A:124:ASP:HB2	1.99	0.45
3:A:302:GLY:H	3:A:307:ALA:CB	2.27	0.45
3:A:182:ARG:HB3	3:A:273:THR:HG23	1.97	0.45
6:T:547:HOH:O	3:A:133:ASN:HB2	2.17	0.44
3:A:103:VAL:HG22	3:A:143:PHE:CE2	2.53	0.44
3:A:165:GLU:CA	3:A:168:LYS:HG2	2.39	0.44
3:A:230:LYS:HB2	3:A:230:LYS:HE2	1.57	0.44
3:A:253:ARG:NH2	6:A:620:HOH:O	2.28	0.44
3:A:210:LEU:HD23	3:A:210:LEU:HA	1.82	0.44
3:A:182:ARG:HH11	3:A:182:ARG:HG2	1.82	0.44
3:A:244:LYS:HB3	3:A:245:ASN:HD22	1.82	0.44
3:A:294:ASN:HB2	3:A:295:GLU:OE1	2.18	0.43
1:T:2:DA:H2''	1:T:3:DT:OP2	2.18	0.43
3:A:260:ILE:HG22	3:A:261:PRO:O	2.18	0.43
1:T:4:DT:N3	2:P:4:DA:C2	2.80	0.43
3:A:182:ARG:NH1	3:A:273:THR:CG2	2.80	0.43
3:A:218:LEU:N	3:A:218:LEU:CD1	2.80	0.43
3:A:15:ILE:HB	3:A:46:ILE:HD11	2.01	0.43
3:A:128:ASN:ND2	3:A:128:ASN:N	2.66	0.43
3:A:166:VAL:CG1	3:A:173:TYR:HB3	2.48	0.43
3:A:119:ILE:CG2	3:A:124:ASP:HB2	2.48	0.43
3:A:179:GLY:O	3:A:182:ARG:HB3	2.18	0.43
3:A:150:ILE:O	3:A:187:SER:HA	2.19	0.43
3:A:303:VAL:C	3:A:305:GLY:H	2.20	0.42
1:T:5:DA:H5'	3:A:229:SER:HB2	2.01	0.42
3:A:279:ASN:HD22	3:A:279:ASN:HA	1.64	0.42
3:A:280:LYS:O	3:A:284:ALA:N	2.42	0.42
3:A:15:ILE:HB	3:A:46:ILE:CD1	2.49	0.42
3:A:243:SER:OG	3:A:249:GLU:HG3	2.19	0.42
3:A:56:GLY:O	3:A:59:ALA:N	2.53	0.42
3:A:285:HIS:HD2	3:A:323:ILE:HD12	1.85	0.42
3:A:88:ILE:HD13	3:A:88:ILE:HG21	1.82	0.42

Continued on next page...

Continued from previous page...

Atom-1	Atom-2	Interatomic distance (Å)	Clash overlap (Å)
3:A:228:LEU:HD12	3:A:228:LEU:HA	1.50	0.42
3:A:278:PHE:CD2	3:A:333:ARG:HB3	2.55	0.42
3:A:254:ARG:HH11	3:A:255:ILE:H	1.64	0.42
3:A:125:LEU:HA	3:A:125:LEU:HD23	1.52	0.41
3:A:204:SER:O	3:A:204:SER:OG	2.30	0.41
3:A:264:GLN:HB3	3:A:296:TYR:O	2.20	0.41
3:A:49:TYR:CD2	3:A:53:ILE:CG1	3.04	0.41
3:A:194:LEU:HD13	3:A:194:LEU:HA	1.68	0.41
3:A:235:PHE:CD1	3:A:235:PHE:C	2.94	0.41
3:A:270:LEU:HD21	3:A:282:MET:CE	2.50	0.41
3:A:163:LEU:HA	3:A:163:LEU:HD23	1.67	0.41
3:A:182:ARG:HG2	3:A:273:THR:CG2	2.50	0.41
3:A:32:ALA:HB1	3:A:35:LYS:HB2	2.02	0.41
3:A:214:VAL:O	3:A:218:LEU:HD13	2.21	0.41
3:A:243:SER:HB3	3:A:249:GLU:HA	2.01	0.41
1:T:6:DG:C6	2:P:2:DC:N3	2.89	0.41
3:A:15:ILE:CG2	3:A:46:ILE:CD1	2.99	0.41
3:A:36:TYR:CD2	3:A:37:ASN:N	2.89	0.41
3:A:172:GLU:HG3	3:A:198:PRO:CG	2.51	0.41
3:A:215:VAL:O	3:A:219:GLN:OE1	2.38	0.41
3:A:286:ALA:CB	3:A:293:ILE:CG1	2.99	0.41
1:T:1:DC:H6	1:T:1:DC:H2'	1.58	0.40
3:A:15:ILE:CG2	3:A:46:ILE:HD13	2.51	0.40
3:A:119:ILE:CG2	3:A:124:ASP:CB	2.99	0.40
3:A:195:LEU:HD12	3:A:195:LEU:HA	1.67	0.40
3:A:100:LEU:HA	3:A:100:LEU:HD12	1.67	0.40

There are no symmetry-related clashes.

5.3 Torsion angles [\(i\)](#)

5.3.1 Protein backbone [\(i\)](#)

In the following table, the Percentiles column shows the percent Ramachandran outliers of the chain as a percentile score with respect to all X-ray entries followed by that with respect to entries of similar resolution.

The Analysed column shows the number of residues for which the backbone conformation was analysed, and the total number of residues.

Mol	Chain	Analysed	Favoured	Allowed	Outliers	Percentiles
3	A	325/335 (97%)	261 (80%)	44 (14%)	20 (6%)	1 8

All (20) Ramachandran outliers are listed below:

Mol	Chain	Res	Type
3	A	185	ALA
3	A	205	THR
3	A	244	LYS
3	A	246	ASP
3	A	247	GLU
3	A	295	GLU
3	A	10	THR
3	A	204	SER
3	A	206	LYS
3	A	289	LYS
3	A	202	SER
3	A	232	GLU
3	A	286	ALA
3	A	309	GLU
3	A	207	GLN
3	A	233	THR
3	A	13	GLY
3	A	318	ASP
3	A	263	ASP
3	A	265	TYR

5.3.2 Protein sidechains [i](#)

In the following table, the Percentiles column shows the percent sidechain outliers of the chain as a percentile score with respect to all X-ray entries followed by that with respect to entries of similar resolution.

The Analysed column shows the number of residues for which the sidechain conformation was analysed, and the total number of residues.

Mol	Chain	Analysed	Rotameric	Outliers	Percentiles
3	A	288/295 (98%)	224 (78%)	64 (22%)	1 4

All (64) residues with a non-rotameric sidechain are listed below:

Mol	Chain	Res	Type
3	A	10	THR

Continued on next page...

Continued from previous page...

Mol	Chain	Res	Type
3	A	11	LEU
3	A	18	MET
3	A	19	LEU
3	A	22	LEU
3	A	27	LYS
3	A	30	SER
3	A	37	ASN
3	A	41	LYS
3	A	46	ILE
3	A	54	LYS
3	A	65	VAL
3	A	67	THR
3	A	77	LEU
3	A	79	THR
3	A	89	ARG
3	A	92	ASP
3	A	95	SER
3	A	100	LEU
3	A	101	THR
3	A	116	ASP
3	A	119	ILE
3	A	121	THR
3	A	128	ASN
3	A	132	LEU
3	A	136	GLN
3	A	152	ARG
3	A	161	ILE
3	A	168	LYS
3	A	169	VAL
3	A	180	SER
3	A	182	ARG
3	A	194	LEU
3	A	201	THR
3	A	209	LYS
3	A	216	GLU
3	A	218	LEU
3	A	226	ASP
3	A	228	LEU
3	A	230	LYS
3	A	235	PHE
3	A	236	MET
3	A	245	ASN

Continued on next page...

Continued from previous page...

Mol	Chain	Res	Type
3	A	248	LYS
3	A	253	ARG
3	A	264	GLN
3	A	277	ILE
3	A	279	ASN
3	A	282	MET
3	A	287	LEU
3	A	293	ILE
3	A	294	ASN
3	A	295	GLU
3	A	298	ILE
3	A	301	LEU
3	A	304	THR
3	A	309	GLU
3	A	311	LEU
3	A	314	ASP
3	A	325	TRP
3	A	327	TYR
3	A	329	GLU
3	A	331	LYS
3	A	335	GLU

Sometimes sidechains can be flipped to improve hydrogen bonding and reduce clashes. All (17) such sidechains are listed below:

Mol	Chain	Res	Type
3	A	12	ASN
3	A	28	ASN
3	A	31	GLN
3	A	37	ASN
3	A	90	GLN
3	A	98	ASN
3	A	128	ASN
3	A	133	ASN
3	A	136	GLN
3	A	157	GLN
3	A	212	HIS
3	A	213	GLN
3	A	217	GLN
3	A	245	ASN
3	A	264	GLN
3	A	279	ASN
3	A	294	ASN

5.3.3 RNA [i](#)

There are no RNA molecules in this entry.

5.4 Non-standard residues in protein, DNA, RNA chains [i](#)

There are no non-standard protein/DNA/RNA residues in this entry.

5.5 Carbohydrates [i](#)

There are no monosaccharides in this entry.

5.6 Ligand geometry [i](#)

Of 3 ligands modelled in this entry, 2 are monoatomic - leaving 1 for Mogul analysis.

In the following table, the Counts columns list the number of bonds (or angles) for which Mogul statistics could be retrieved, the number of bonds (or angles) that are observed in the model and the number of bonds (or angles) that are defined in the Chemical Component Dictionary. The Link column lists molecule types, if any, to which the group is linked. The Z score for a bond length (or angle) is the number of standard deviations the observed value is removed from the expected value. A bond length (or angle) with $|Z| > 2$ is considered an outlier worth inspection. RMSZ is the root-mean-square of all Z scores of the bond lengths (or angles).

Mol	Type	Chain	Res	Link	Bond lengths			Bond angles		
					Counts	RMSZ	# Z > 2	Counts	RMSZ	# Z > 2
5	STP	A	338	4	8,12,32	6.88	1 (12%)	10,20,50	1.26	0

In the following table, the Chirals column lists the number of chiral outliers, the number of chiral centers analysed, the number of these observed in the model and the number defined in the Chemical Component Dictionary. Similar counts are reported in the Torsion and Rings columns. '-' means no outliers of that kind were identified.

Mol	Type	Chain	Res	Link	Chirals	Torsions	Rings
5	STP	A	338	4	-	5/11/12/34	-

All (1) bond length outliers are listed below:

Mol	Chain	Res	Type	Atoms	Z	Observed(Å)	Ideal(Å)
5	A	338	STP	PA-S1A	-19.17	1.49	1.90

There are no bond angle outliers.

There are no chirality outliers.

All (5) torsion outliers are listed below:

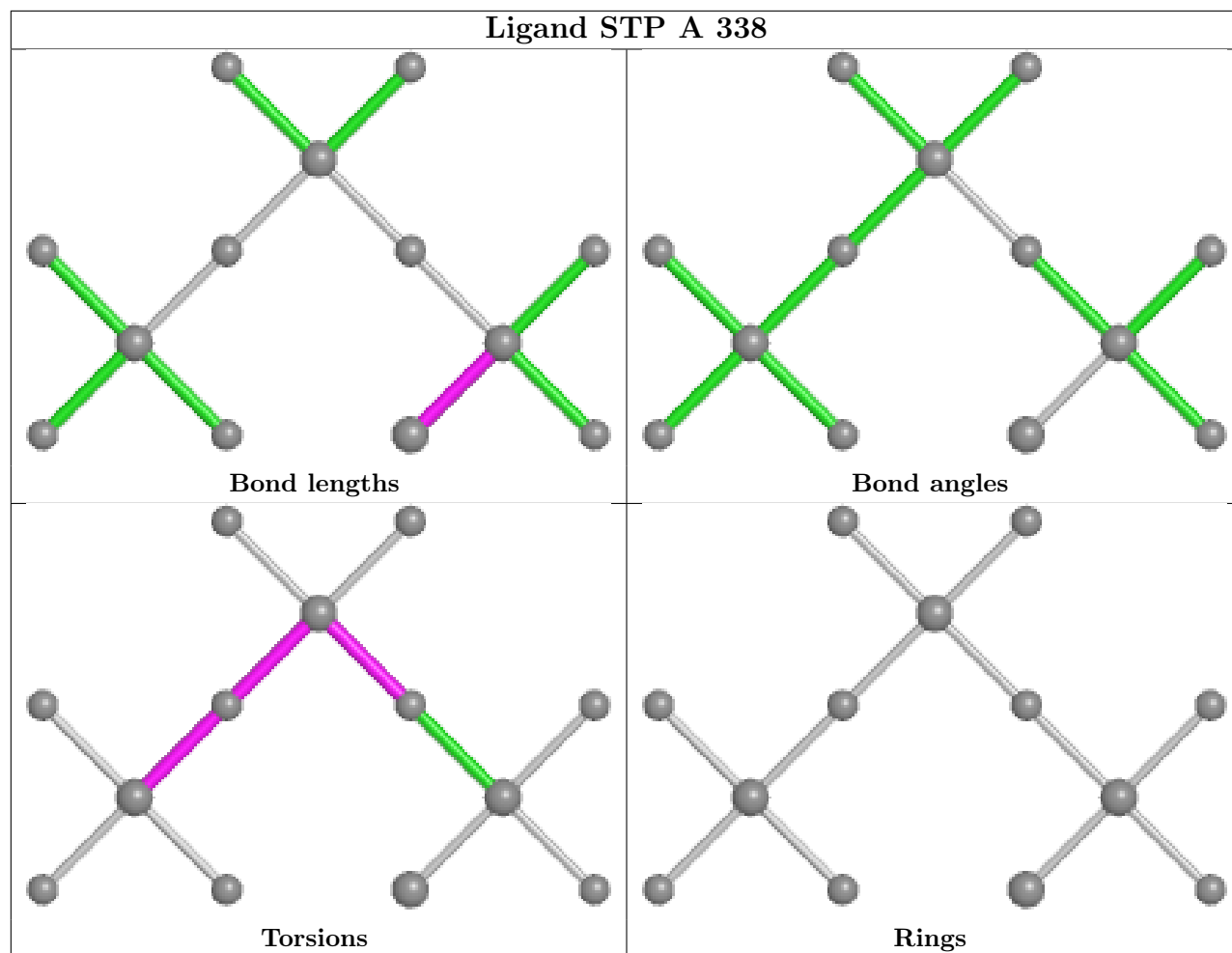
Mol	Chain	Res	Type	Atoms
5	A	338	STP	PB-O3B-PG-O2G
5	A	338	STP	PB-O3B-PG-O1G
5	A	338	STP	PG-O3B-PB-O2B
5	A	338	STP	PA-O3A-PB-O1B
5	A	338	STP	PG-O3B-PB-O1B

There are no ring outliers.

1 monomer is involved in 5 short contacts:

Mol	Chain	Res	Type	Clashes	Symm-Clashes
5	A	338	STP	5	0

The following is a two-dimensional graphical depiction of Mogul quality analysis of bond lengths, bond angles, torsion angles, and ring geometry for all instances of the Ligand of Interest. In addition, ligands with molecular weight > 250 and outliers as shown on the validation Tables will also be included. For torsion angles, if less than 5% of the Mogul distribution of torsion angles is within 10 degrees of the torsion angle in question, then that torsion angle is considered an outlier. Any bond that is central to one or more torsion angles identified as an outlier by Mogul will be highlighted in the graph. For rings, the root-mean-square deviation (RMSD) between the ring in question and similar rings identified by Mogul is calculated over all ring torsion angles. If the average RMSD is greater than 60 degrees and the minimal RMSD between the ring in question and any Mogul-identified rings is also greater than 60 degrees, then that ring is considered an outlier. The outliers are highlighted in purple. The color gray indicates Mogul did not find sufficient equivalents in the CSD to analyse the geometry.



5.7 Other polymers [\(i\)](#)

There are no such residues in this entry.

5.8 Polymer linkage issues [\(i\)](#)

There are no chain breaks in this entry.

6 Fit of model and data [i](#)

6.1 Protein, DNA and RNA chains [i](#)

In the following table, the column labelled '#RSRZ > 2' contains the number (and percentage) of RSRZ outliers, followed by percent RSRZ outliers for the chain as percentile scores relative to all X-ray entries and entries of similar resolution. The OWAB column contains the minimum, median, 95th percentile and maximum values of the occupancy-weighted average B-factor per residue. The column labelled 'Q < 0.9' lists the number of (and percentage) of residues with an average occupancy less than 0.9.

Mol	Chain	Analysed	<RSRZ>	#RSRZ>2	OWAB(Å ²)	Q<0.9
1	T	8/8 (100%)	-0.43	1 (12%) 3 1	22, 40, 98, 100	0
2	P	7/7 (100%)	-0.92	0 100 100	21, 23, 38, 100	0
3	A	325/335 (97%)	-1.13	0 100 100	5, 32, 83, 100	0
All	All	340/350 (97%)	-1.11	1 (0%) 94 84	5, 32, 86, 100	0

All (1) RSRZ outliers are listed below:

Mol	Chain	Res	Type	RSRZ
1	T	1	DC	2.8

6.2 Non-standard residues in protein, DNA, RNA chains [i](#)

There are no non-standard protein/DNA/RNA residues in this entry.

6.3 Carbohydrates [i](#)

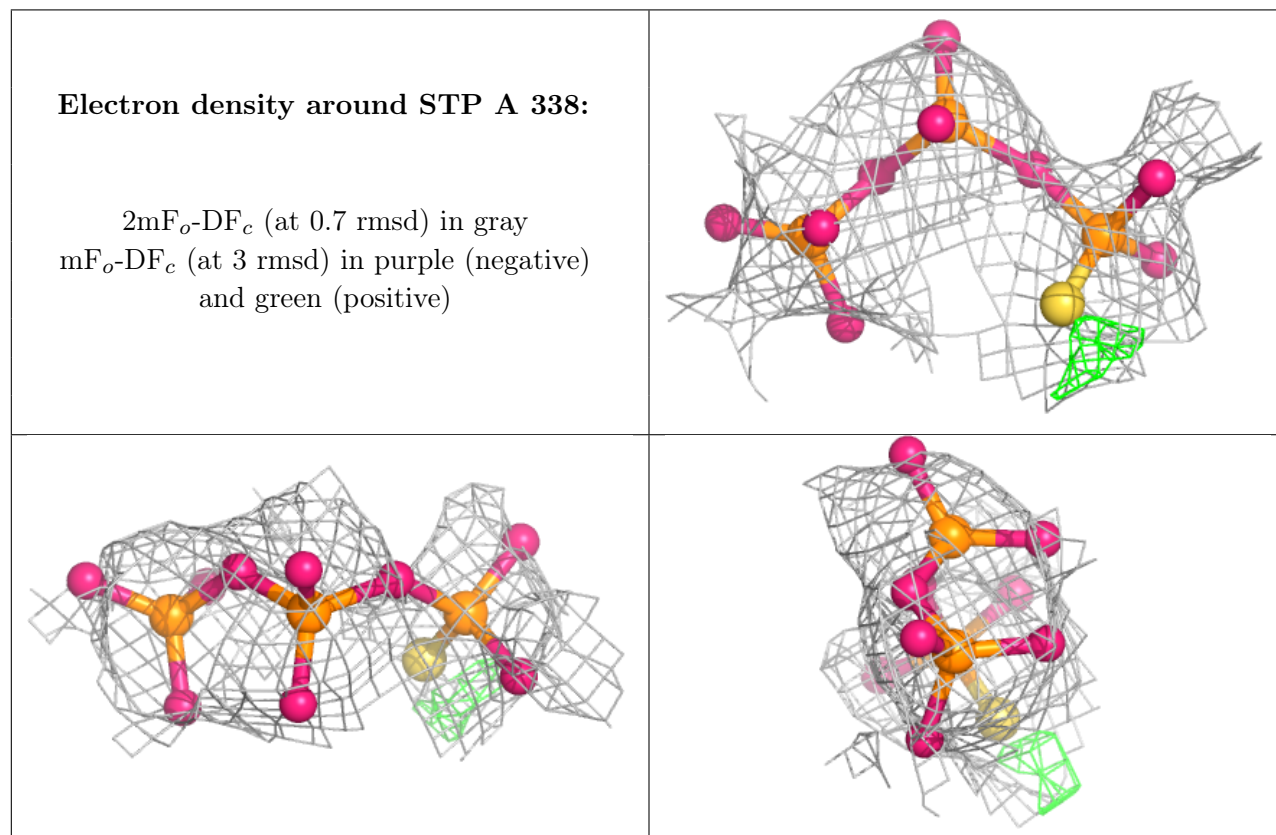
There are no monosaccharides in this entry.

6.4 Ligands [i](#)

In the following table, the Atoms column lists the number of modelled atoms in the group and the number defined in the chemical component dictionary. The B-factors column lists the minimum, median, 95th percentile and maximum values of B factors of atoms in the group. The column labelled 'Q < 0.9' lists the number of atoms with occupancy less than 0.9.

Mol	Type	Chain	Res	Atoms	RSCC	RSR	B-factors(Å ²)	Q<0.9
5	STP	A	338	13/30	0.88	0.21	59,74,81,82	13
4	MN	A	339	1/1	0.90	0.12	30,30,30,30	1
4	MN	A	340	1/1	0.92	0.17	30,30,30,30	1

The following is a graphical depiction of the model fit to experimental electron density of all instances of the Ligand of Interest. In addition, ligands with molecular weight > 250 and outliers as shown on the geometry validation Tables will also be included. Each fit is shown from different orientation to approximate a three-dimensional view.



6.5 Other polymers [i](#)

There are no such residues in this entry.