



Full wwPDB X-ray Structure Validation Report ⓘ

Nov 1, 2023 – 05:23 AM EDT

PDB ID : 3IFZ
Title : crystal structure of the first part of the Mycobacterium tuberculosis DNA gyrase reaction core: the breakage and reunion domain at 2.7 Å resolution
Authors : Piton, J.; Aubry, A.; Delarue, M.; Mayer, C.
Deposited on : 2009-07-27
Resolution : 2.70 Å(reported)

This is a Full wwPDB X-ray Structure Validation Report for a publicly released PDB entry.

We welcome your comments at validation@mail.wwpdb.org

A user guide is available at

<https://www.wwpdb.org/validation/2017/XrayValidationReportHelp>

with specific help available everywhere you see the ⓘ symbol.

The types of validation reports are described at

<http://www.wwpdb.org/validation/2017/FAQs#types>.

The following versions of software and data (see [references ⓘ](#)) were used in the production of this report:

MolProbity : 4.02b-467
Mogul : 1.8.5 (274361), CSD as541be (2020)
Xtriage (Phenix) : 1.13
EDS : 2.36
Percentile statistics : 20191225.v01 (using entries in the PDB archive December 25th 2019)
Refmac : 5.8.0158
CCP4 : 7.0.044 (Gargrove)
Ideal geometry (proteins) : Engh & Huber (2001)
Ideal geometry (DNA, RNA) : Parkinson et al. (1996)
Validation Pipeline (wwPDB-VP) : 2.36

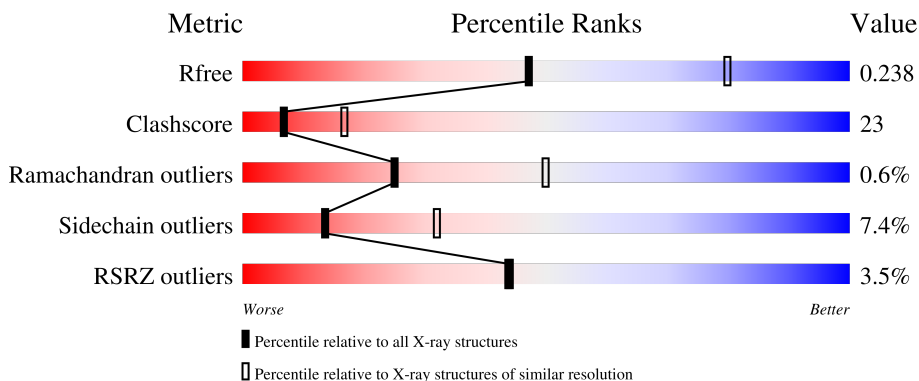
1 Overall quality at a glance

The following experimental techniques were used to determine the structure:

X-RAY DIFFRACTION

The reported resolution of this entry is 2.70 Å.

Percentile scores (ranging between 0-100) for global validation metrics of the entry are shown in the following graphic. The table shows the number of entries on which the scores are based.



Metric	Whole archive (#Entries)	Similar resolution (#Entries, resolution range(Å))
R_{free}	130704	2808 (2.70-2.70)
Clashscore	141614	3122 (2.70-2.70)
Ramachandran outliers	138981	3069 (2.70-2.70)
Sidechain outliers	138945	3069 (2.70-2.70)
RSRZ outliers	127900	2737 (2.70-2.70)

The table below summarises the geometric issues observed across the polymeric chains and their fit to the electron density. The red, orange, yellow and green segments of the lower bar indicate the fraction of residues that contain outliers for ≥ 3 , 2, 1 and 0 types of geometric quality criteria respectively. A grey segment represents the fraction of residues that are not modelled. The numeric value for each fraction is indicated below the corresponding segment, with a dot representing fractions $\leq 5\%$. The upper red bar (where present) indicates the fraction of residues that have poor fit to the electron density. The numeric value is given above the bar.

Mol	Chain	Length	Quality of chain
1	A	508	
1	B	508	

The following table lists non-polymeric compounds, carbohydrate monomers and non-standard residues in protein, DNA, RNA chains that are outliers for geometric or electron-density-fit criteria:

Mol	Type	Chain	Res	Chirality	Geometry	Clashes	Electron density
2	MPD	A	509	-	-	X	-
2	MPD	B	509	-	-	X	-

2 Entry composition

There are 4 unique types of molecules in this entry. The entry contains 7774 atoms, of which 0 are hydrogens and 0 are deuteriums.

In the tables below, the ZeroOcc column contains the number of atoms modelled with zero occupancy, the AltConf column contains the number of residues with at least one atom in alternate conformation and the Trace column contains the number of residues modelled with at most 2 atoms.

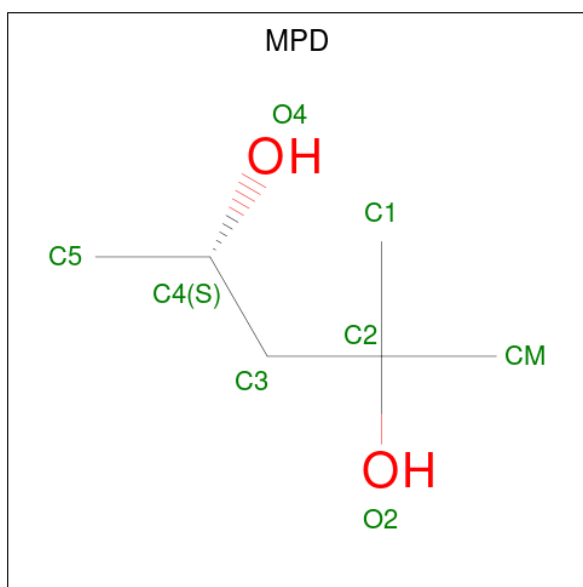
- Molecule 1 is a protein called DNA gyrase subunit A.

Mol	Chain	Residues	Atoms					ZeroOcc	AltConf	Trace
			Total	C	N	O	S			
1	A	487	3834	2386	701	734	13	0	0	0
1	B	473	3700	2303	682	703	12	0	0	0

There are 14 discrepancies between the modelled and reference sequences:

Chain	Residue	Modelled	Actual	Comment	Reference
A	502	GLU	-	expression tag	UNP Q07702
A	503	HIS	-	expression tag	UNP Q07702
A	504	HIS	-	expression tag	UNP Q07702
A	505	HIS	-	expression tag	UNP Q07702
A	506	HIS	-	expression tag	UNP Q07702
A	507	HIS	-	expression tag	UNP Q07702
A	508	HIS	-	expression tag	UNP Q07702
B	502	GLU	-	expression tag	UNP Q07702
B	503	HIS	-	expression tag	UNP Q07702
B	504	HIS	-	expression tag	UNP Q07702
B	505	HIS	-	expression tag	UNP Q07702
B	506	HIS	-	expression tag	UNP Q07702
B	507	HIS	-	expression tag	UNP Q07702
B	508	HIS	-	expression tag	UNP Q07702

- Molecule 2 is (4S)-2-METHYL-2,4-PENTANEDIOL (three-letter code: MPD) (formula: C₆H₁₄O₂).



Mol	Chain	Residues	Atoms	ZeroOcc	AltConf
2	A	1	Total C O 8 6 2	0	0
2	B	1	Total C O 8 6 2	0	0

- Molecule 3 is SODIUM ION (three-letter code: NA) (formula: Na).

Mol	Chain	Residues	Atoms	ZeroOcc	AltConf
3	A	1	Total Na 1 1	0	0
3	B	1	Total Na 1 1	0	0

- Molecule 4 is water.

Mol	Chain	Residues	Atoms	ZeroOcc	AltConf
4	A	104	Total O 104 104	0	0
4	B	118	Total O 118 118	0	0



4 Data and refinement statistics i

Property	Value	Source
Space group	C 1 2 1	Depositor
Cell constants a, b, c, α , β , γ	163.91Å 109.66Å 102.00Å 90.00° 120.40° 90.00°	Depositor
Resolution (Å)	19.90 – 2.70 19.90 – 2.70	Depositor EDS
% Data completeness (in resolution range)	99.2 (19.90-2.70) 99.2 (19.90-2.70)	Depositor EDS
R_{merge}	0.10	Depositor
R_{sym}	0.09	Depositor
$\langle I/\sigma(I) \rangle$ ¹	2.46 (at 2.71Å)	Xtrriage
Refinement program	BUSTER-TNT 2.5.1	Depositor
R, R_{free}	0.192 , 0.233 0.200 , 0.238	Depositor DCC
R_{free} test set	2125 reflections (5.01%)	wwPDB-VP
Wilson B-factor (Å ²)	51.2	Xtrriage
Anisotropy	0.310	Xtrriage
Bulk solvent k_{sol} (e/Å ³), B_{sol} (Å ²)	0.32 , 56.1	EDS
L-test for twinning ²	$\langle L \rangle = 0.49$, $\langle L^2 \rangle = 0.32$	Xtrriage
Estimated twinning fraction	0.009 for $-1/2^*h+1/2^*k+1, 1/2^*h-1/2^*k+1, 1/2^*h+1/2^*k$ 0.015 for $-1/2^*h-1/2^*k+1, -1/2^*h-1/2^*k-1, 1/2^*h-1/2^*k$	Xtrriage
F_o, F_c correlation	0.94	EDS
Total number of atoms	7774	wwPDB-VP
Average B, all atoms (Å ²)	57.0	wwPDB-VP

Xtrriage's analysis on translational NCS is as follows: *The largest off-origin peak in the Patterson function is 3.89% of the height of the origin peak. No significant pseudotranslation is detected.*

¹Intensities estimated from amplitudes.

²Theoretical values of $\langle |L| \rangle$, $\langle L^2 \rangle$ for acentric reflections are 0.5, 0.333 respectively for untwinned datasets, and 0.375, 0.2 for perfectly twinned datasets.

5 Model quality

5.1 Standard geometry

Bond lengths and bond angles in the following residue types are not validated in this section: MPD, NA

The Z score for a bond length (or angle) is the number of standard deviations the observed value is removed from the expected value. A bond length (or angle) with $|Z| > 5$ is considered an outlier worth inspection. RMSZ is the root-mean-square of all Z scores of the bond lengths (or angles).

Mol	Chain	Bond lengths		Bond angles	
		RMSZ	# Z >5	RMSZ	# Z >5
1	A	0.26	0/3892	0.48	0/5271
1	B	0.27	0/3757	0.49	0/5090
All	All	0.26	0/7649	0.48	0/10361

There are no bond length outliers.

There are no bond angle outliers.

There are no chirality outliers.

There are no planarity outliers.

5.2 Too-close contacts

In the following table, the Non-H and H(model) columns list the number of non-hydrogen atoms and hydrogen atoms in the chain respectively. The H(added) column lists the number of hydrogen atoms added and optimized by MolProbity. The Clashes column lists the number of clashes within the asymmetric unit, whereas Symm-Clashes lists symmetry-related clashes.

Mol	Chain	Non-H	H(model)	H(added)	Clashes	Symm-Clashes
1	A	3834	0	3838	199	0
1	B	3700	0	3715	154	0
2	A	8	0	14	9	0
2	B	8	0	14	9	0
3	A	1	0	0	0	0
3	B	1	0	0	0	0
4	A	104	0	0	4	0
4	B	118	0	0	0	0
All	All	7774	0	7581	352	0

The all-atom clashscore is defined as the number of clashes found per 1000 atoms (including hydrogen atoms). The all-atom clashscore for this structure is 23.

All (352) close contacts within the same asymmetric unit are listed below, sorted by their clash magnitude.

Atom-1	Atom-2	Interatomic distance (Å)	Clash overlap (Å)
2:B:509:MPD:H12	2:B:509:MPD:C5	1.61	1.22
2:B:509:MPD:H53	2:B:509:MPD:C1	1.57	1.21
1:A:298:GLY:HA2	1:A:319:LYS:HG2	1.32	1.08
1:A:259:VAL:HG12	1:A:269:LEU:HA	1.33	1.07
1:A:318:ILE:HD12	1:A:323:VAL:HA	1.39	1.05
2:A:509:MPD:H53	2:A:509:MPD:H12	1.40	1.03
2:B:509:MPD:C5	2:B:509:MPD:C1	2.30	0.98
1:A:424:LEU:HD13	1:A:425:LEU:HG	1.46	0.97
2:B:509:MPD:H52	2:B:509:MPD:O2	1.58	0.97
1:A:274:LEU:HB3	1:A:278:VAL:HG21	1.45	0.96
1:A:262:ASP:HB2	1:A:264:ARG:N	1.82	0.94
1:A:9:ASP:N	1:A:26:ARG:HD3	1.85	0.91
1:A:205:LEU:HD11	1:A:479:VAL:HG22	1.50	0.91
1:A:418:ARG:HH11	1:A:433:GLN:HE22	1.18	0.91
1:B:205:LEU:HD11	1:B:479:VAL:HG22	1.52	0.91
1:B:418:ARG:HH11	1:B:433:GLN:HE22	1.18	0.90
1:A:16:GLU:HG3	1:A:17:PRO:HD2	1.54	0.89
1:B:373:ILE:HD11	1:B:376:ARG:HH21	1.38	0.88
1:A:284:ILE:HD11	1:A:314:ILE:CD1	2.04	0.88
2:A:509:MPD:H53	2:A:509:MPD:C1	1.99	0.87
1:A:324:ALA:HB3	1:A:326:VAL:HG12	1.58	0.85
1:A:284:ILE:HD11	1:A:314:ILE:HD12	1.60	0.83
1:B:241:ALA:O	1:B:245:LYS:HG2	1.79	0.82
1:B:74:ALA:HA	1:B:127:MET:CE	2.09	0.82
1:A:324:ALA:CB	1:A:326:VAL:HG12	2.10	0.82
1:A:291:VAL:CG2	1:A:299:ILE:HD12	2.10	0.81
1:A:287:ILE:HG22	1:A:302:ILE:HD11	1.60	0.81
1:A:292:ARG:HG3	1:A:292:ARG:HH11	1.45	0.80
1:A:424:LEU:CD1	1:A:425:LEU:HG	2.12	0.80
2:B:509:MPD:C5	2:B:509:MPD:O2	2.30	0.80
1:A:16:GLU:CG	1:A:17:PRO:HD2	2.12	0.80
1:B:485:GLU:HG2	1:B:489:ARG:HH22	1.47	0.80
2:A:509:MPD:O2	2:A:509:MPD:C5	2.30	0.79
1:B:405:ILE:O	1:B:409:ARG:HG3	1.81	0.79
1:A:405:ILE:O	1:A:409:ARG:HG3	1.83	0.79
1:B:373:ILE:CD1	1:B:376:ARG:HH21	1.96	0.78
1:A:274:LEU:HB3	1:A:278:VAL:CG2	2.12	0.78
1:A:83:ASN:ND2	1:B:75:ARG:HH12	1.82	0.77
1:A:318:ILE:CD1	1:A:323:VAL:HA	2.13	0.77
1:A:241:ALA:O	1:A:245:LYS:HG2	1.85	0.76

Continued on next page...

Continued from previous page...

Atom-1	Atom-2	Interatomic distance (Å)	Clash overlap (Å)
1:A:254:ARG:HH21	1:A:338:GLN:NE2	1.84	0.76
1:B:264:ARG:N	1:B:265:GLY:HA2	1.99	0.75
1:A:298:GLY:HA2	1:A:319:LYS:CG	2.14	0.75
1:B:148:GLU:HG3	1:B:379:TYR:CD1	2.21	0.75
1:A:275:PRO:O	1:A:278:VAL:HG22	1.86	0.75
1:A:205:LEU:HD11	1:A:479:VAL:CG2	2.16	0.75
1:A:262:ASP:HA	1:A:263:SER:CB	2.15	0.75
1:A:448:ARG:HD3	4:A:606:HOH:O	1.86	0.75
1:B:305:GLN:HB2	1:B:313:ARG:HG2	1.68	0.75
1:B:323:VAL:HB	1:B:326:VAL:HG13	1.69	0.74
1:B:254:ARG:HH21	1:B:338:GLN:NE2	1.86	0.74
1:B:74:ALA:HA	1:B:127:MET:HE2	1.68	0.74
1:B:205:LEU:HD11	1:B:479:VAL:CG2	2.18	0.74
1:A:148:GLU:HG3	1:A:379:TYR:CD1	2.23	0.74
1:A:259:VAL:CG1	1:A:269:LEU:HD12	2.17	0.73
1:A:424:LEU:HD22	1:A:424:LEU:O	1.88	0.73
1:A:12:LEU:H	1:A:12:LEU:HD23	1.53	0.73
1:A:259:VAL:HG11	1:A:269:LEU:HD12	1.72	0.72
1:A:330:ASN:HA	1:A:333:LYS:HD2	1.71	0.72
2:A:509:MPD:H12	2:A:509:MPD:C5	2.06	0.72
1:A:94:ASP:O	1:A:98:ARG:HG3	1.90	0.71
1:A:236:GLY:H	1:A:499:ILE:HD13	1.54	0.71
1:B:169:ARG:HE	1:B:369:GLN:HE22	1.37	0.71
1:B:418:ARG:HH11	1:B:433:GLN:NE2	1.89	0.71
1:A:169:ARG:HE	1:A:369:GLN:HE22	1.38	0.70
1:A:105:LEU:HD21	2:A:509:MPD:H53	1.73	0.70
1:A:14:ARG:O	1:A:15:ILE:HG22	1.91	0.69
1:A:418:ARG:HH11	1:A:433:GLN:NE2	1.89	0.69
1:A:236:GLY:H	1:A:499:ILE:CD1	2.06	0.69
1:A:413:THR:HG22	1:B:446:LEU:HD12	1.74	0.69
1:B:182:ALA:HB3	1:B:185:MET:CG	2.22	0.68
1:A:30:ASP:O	1:A:34:SER:HB3	1.94	0.68
1:A:271:ILE:HG13	1:A:271:ILE:O	1.94	0.68
1:A:14:ARG:HD3	1:A:19:ASP:CG	2.14	0.67
1:A:40:ALA:HB3	1:A:182:ALA:HB2	1.77	0.67
1:A:284:ILE:HD11	1:A:314:ILE:HD11	1.76	0.67
1:B:77:VAL:HB	1:B:127:MET:CE	2.25	0.67
1:A:287:ILE:HG22	1:A:302:ILE:CD1	2.24	0.66
1:B:271:ILE:HD11	1:B:274:LEU:HG	1.77	0.66
1:A:437:ASP:OD1	1:B:441:ARG:NH1	2.28	0.66
1:B:77:VAL:HB	1:B:127:MET:HE2	1.77	0.66

Continued on next page...

Continued from previous page...

Atom-1	Atom-2	Interatomic distance (Å)	Clash overlap (Å)
1:A:298:GLY:CA	1:A:319:LYS:HG2	2.19	0.66
1:A:419:ALA:O	1:A:423:GLU:HG3	1.96	0.66
2:A:509:MPD:H12	2:A:509:MPD:O4	1.95	0.66
1:B:74:ALA:HA	1:B:127:MET:HE1	1.77	0.66
1:A:445:ALA:HB3	1:B:412:GLU:HA	1.76	0.66
1:A:37:VAL:HG22	1:A:182:ALA:HB1	1.79	0.65
1:A:271:ILE:HD11	1:A:274:LEU:HG	1.79	0.65
1:A:441:ARG:NH1	1:B:433:GLN:OE1	2.30	0.65
1:A:75:ARG:NH1	1:B:157:ASP:OD1	2.30	0.65
1:A:234:ILE:CD1	1:A:496:THR:HG21	2.26	0.64
2:A:509:MPD:H53	2:A:509:MPD:O2	1.97	0.64
1:B:87:HIS:C	1:B:89:ASP:H	1.99	0.64
1:B:37:VAL:HG12	1:B:348:ILE:HD11	1.80	0.64
1:B:271:ILE:HG13	1:B:271:ILE:O	1.96	0.63
1:A:307:SER:O	1:A:310:VAL:HG12	1.99	0.63
1:A:263:SER:O	1:A:264:ARG:HG3	1.97	0.63
1:A:286:SER:HA	1:A:289:GLU:OE1	1.98	0.63
1:B:264:ARG:NH2	1:B:267:THR:O	2.31	0.63
1:B:389:HIS:CE1	1:B:430:ILE:HD11	2.34	0.63
1:A:291:VAL:HG22	1:A:299:ILE:HD12	1.80	0.63
1:B:182:ALA:HB3	1:B:185:MET:HG2	1.81	0.62
1:B:33:MET:HE1	1:B:183:VAL:HG11	1.81	0.62
1:B:307:SER:O	1:B:311:GLY:N	2.30	0.62
1:A:40:ALA:HB3	1:A:182:ALA:CB	2.29	0.62
1:A:292:ARG:HG3	1:A:292:ARG:NH1	2.13	0.62
1:B:391:LEU:HD12	1:B:458:ILE:HD12	1.82	0.62
1:A:169:ARG:HE	1:A:369:GLN:NE2	1.98	0.61
1:B:169:ARG:HE	1:B:369:GLN:NE2	1.98	0.61
2:A:509:MPD:C1	2:A:509:MPD:O4	2.48	0.61
1:B:287:ILE:HG22	1:B:302:ILE:CD1	2.31	0.61
1:A:256:VAL:HB	1:A:273:GLU:HB2	1.82	0.61
1:A:424:LEU:HD13	1:A:425:LEU:CG	2.27	0.60
1:A:262:ASP:HA	1:A:263:SER:OG	2.01	0.60
1:B:324:ALA:O	1:B:328:ILE:HG13	2.01	0.60
1:B:41:LEU:HD21	1:B:182:ALA:HB2	1.84	0.60
1:A:16:GLU:HG3	1:A:17:PRO:CD	2.30	0.60
1:A:106:ARG:HG3	1:A:107:TYR:CE2	2.37	0.60
2:A:509:MPD:O2	2:A:509:MPD:H52	2.03	0.59
1:A:106:ARG:HA	1:A:229:PRO:HB3	1.86	0.58
1:A:298:GLY:O	1:A:318:ILE:HA	2.03	0.58
1:B:256:VAL:HB	1:B:273:GLU:HB2	1.84	0.58

Continued on next page...

Continued from previous page...

Atom-1	Atom-2	Interatomic distance (Å)	Clash overlap (Å)
1:A:285:THR:HG22	1:A:289:GLU:OE1	2.03	0.58
1:B:33:MET:CE	1:B:183:VAL:HG11	2.34	0.58
1:B:106:ARG:HG3	1:B:107:TYR:CE2	2.38	0.58
1:A:234:ILE:HD12	1:A:496:THR:CG2	2.34	0.58
1:B:468:ILE:HG13	1:B:474:ARG:NH1	2.19	0.57
1:A:234:ILE:HD12	1:A:496:THR:HG21	1.87	0.57
1:B:182:ALA:HB3	1:B:185:MET:HG3	1.85	0.57
1:A:262:ASP:HA	1:A:263:SER:HB3	1.86	0.57
1:B:485:GLU:CG	1:B:489:ARG:HH22	2.16	0.57
1:A:418:ARG:HD3	1:A:433:GLN:NE2	2.19	0.57
1:A:169:ARG:NH2	1:A:373:ILE:HD11	2.20	0.56
1:B:418:ARG:HD3	1:B:433:GLN:NE2	2.20	0.56
1:A:323:VAL:HG12	1:A:323:VAL:O	2.04	0.56
1:B:252:ARG:HG3	1:B:252:ARG:NH1	2.20	0.56
2:B:509:MPD:H52	2:B:509:MPD:HO2	1.68	0.56
1:A:12:LEU:HD23	1:A:12:LEU:N	2.20	0.56
1:A:499:ILE:HD12	4:A:599:HOH:O	2.06	0.56
1:B:160:VAL:HG12	1:B:161:GLN:N	2.21	0.56
1:A:15:ILE:HG23	1:A:15:ILE:O	2.05	0.56
1:A:252:ARG:NH1	1:A:252:ARG:HG3	2.21	0.55
1:B:485:GLU:HG2	1:B:489:ARG:NH2	2.20	0.55
1:B:373:ILE:HD11	1:B:376:ARG:NH2	2.17	0.55
1:B:266:ARG:HG3	1:B:320:ARG:HG2	1.89	0.55
1:A:412:GLU:HA	1:B:445:ALA:HB3	1.87	0.55
1:B:39:ARG:HH12	1:B:51:VAL:HG22	1.71	0.55
1:B:422:ILE:HG23	1:B:427:ILE:O	2.07	0.55
1:B:404:VAL:O	1:B:408:ILE:HG13	2.07	0.54
1:B:216:LEU:O	1:B:220:MET:HG3	2.07	0.54
1:A:296:LEU:HG	1:A:299:ILE:HD11	1.88	0.54
1:A:422:ILE:HG23	1:A:427:ILE:O	2.08	0.54
2:B:509:MPD:H12	2:B:509:MPD:H53	0.69	0.54
1:A:404:VAL:O	1:A:408:ILE:HG13	2.08	0.54
1:A:40:ALA:CB	1:A:182:ALA:HA	2.38	0.54
1:A:12:LEU:O	1:A:13:ASP:HB3	2.08	0.53
1:A:10:ASP:CG	1:A:11:SER:H	2.10	0.53
1:A:269:LEU:HD21	1:A:327:VAL:HG12	1.91	0.53
1:B:183:VAL:HG13	1:B:183:VAL:O	2.08	0.53
1:B:287:ILE:HG22	1:B:302:ILE:HD13	1.90	0.53
1:A:169:ARG:HG3	1:A:169:ARG:HH11	1.73	0.53
1:A:254:ARG:HE	1:A:338:GLN:HE21	1.56	0.53
1:B:373:ILE:O	1:B:377:THR:HG23	2.09	0.53

Continued on next page...

Continued from previous page...

Atom-1	Atom-2	Interatomic distance (Å)	Clash overlap (Å)
1:A:300:SER:N	1:A:317:GLU:O	2.34	0.53
1:A:290:GLN:HE22	1:A:334:HIS:HB3	1.74	0.53
1:A:16:GLU:CD	1:A:17:PRO:HD2	2.29	0.53
1:B:295:LYS:HE3	1:B:334:HIS:CD2	2.44	0.53
1:A:17:PRO:HA	1:A:20:ILE:HD12	1.91	0.52
1:A:183:VAL:C	1:A:185:MET:H	2.12	0.52
1:B:182:ALA:HB3	1:B:185:MET:O	2.09	0.52
1:B:323:VAL:HB	1:B:326:VAL:CG1	2.39	0.52
1:B:407:LEU:C	1:B:407:LEU:HD23	2.29	0.52
1:A:260:GLU:O	1:A:261:GLU:HG3	2.09	0.52
1:A:39:ARG:HH22	1:A:54:ARG:HH12	1.58	0.52
1:B:233:LEU:HD23	1:B:497:ARG:HB2	1.91	0.52
1:B:254:ARG:HE	1:B:338:GLN:HE21	1.55	0.52
1:A:304:ASP:OD1	1:A:306:SER:OG	2.28	0.52
1:A:324:ALA:HB3	1:A:326:VAL:CG1	2.35	0.52
1:B:328:ILE:O	1:B:331:LEU:HB2	2.09	0.52
1:A:291:VAL:HG22	1:A:296:LEU:O	2.10	0.51
1:A:83:ASN:HD21	1:B:75:ARG:HH12	1.57	0.51
1:A:407:LEU:C	1:A:407:LEU:HD23	2.30	0.51
1:B:262:ASP:O	1:B:265:GLY:HA2	2.10	0.51
1:B:402:ASP:N	1:B:402:ASP:OD2	2.43	0.51
1:A:269:LEU:HB2	1:A:316:ILE:O	2.11	0.51
1:B:198:ALA:CB	1:B:487:VAL:HG21	2.40	0.51
1:A:183:VAL:HG12	1:A:183:VAL:O	2.09	0.51
1:B:407:LEU:HD13	1:B:424:LEU:HD22	1.93	0.51
1:A:203:TRP:CE2	1:A:207:ASN:ND2	2.79	0.51
1:B:262:ASP:OD2	1:B:266:ARG:N	2.44	0.51
1:B:287:ILE:HG22	1:B:302:ILE:HD11	1.93	0.51
1:A:402:ASP:OD2	1:A:402:ASP:N	2.44	0.50
1:A:448:ARG:NH1	4:A:606:HOH:O	2.24	0.50
1:A:455:LEU:O	1:A:458:ILE:HG22	2.11	0.50
1:B:203:TRP:CE2	1:B:207:ASN:ND2	2.79	0.50
1:A:233:LEU:HD23	1:A:497:ARG:HB2	1.94	0.50
1:B:169:ARG:HG3	1:B:169:ARG:HH11	1.76	0.50
1:A:325:LYS:O	1:A:328:ILE:HB	2.12	0.50
1:A:373:ILE:HG13	1:A:376:ARG:HH21	1.76	0.50
1:A:373:ILE:CG1	1:A:376:ARG:HH21	2.25	0.50
1:B:45:ARG:HG2	1:B:368:HIS:HB2	1.94	0.50
1:B:391:LEU:CD1	1:B:458:ILE:HD12	2.42	0.50
1:B:418:ARG:NH1	1:B:433:GLN:HE22	1.99	0.50
1:B:252:ARG:HG3	1:B:252:ARG:HH11	1.76	0.50

Continued on next page...

Continued from previous page...

Atom-1	Atom-2	Interatomic distance (Å)	Clash overlap (Å)
1:A:205:LEU:CD1	1:A:479:VAL:HG22	2.33	0.49
1:A:259:VAL:HG12	1:A:269:LEU:CA	2.24	0.49
1:A:259:VAL:CG1	1:A:269:LEU:HA	2.24	0.49
1:B:359:ASP:O	1:B:363:ARG:HG3	2.12	0.49
1:A:75:ARG:NH2	1:B:83:ASN:ND2	2.60	0.49
1:B:290:GLN:HB3	1:B:296:LEU:HD12	1.93	0.49
1:A:205:LEU:HD13	1:A:480:ARG:HB2	1.95	0.49
1:A:284:ILE:CD1	1:A:314:ILE:HD12	2.39	0.49
1:A:262:ASP:HB2	1:A:263:SER:C	2.33	0.49
1:A:252:ARG:HG3	1:A:252:ARG:HH11	1.77	0.49
1:A:216:LEU:HD13	1:A:359:ASP:OD1	2.13	0.49
1:B:37:VAL:CG1	1:B:348:ILE:HD11	2.42	0.49
1:B:212:GLU:OE1	1:B:357:ARG:NH2	2.42	0.49
1:B:39:ARG:NH2	1:B:85:HIS:HE1	2.11	0.48
1:A:169:ARG:HG3	1:A:169:ARG:NH1	2.28	0.48
1:A:401:LEU:O	1:A:405:ILE:HG13	2.12	0.48
1:A:455:LEU:O	1:A:455:LEU:HD12	2.13	0.48
1:B:40:ALA:HB1	1:B:181:ILE:O	2.14	0.48
1:B:47:GLY:CA	1:B:173:LEU:HB2	2.43	0.48
1:A:173:LEU:HD11	1:A:189:ILE:HD13	1.96	0.48
1:A:368:HIS:HD2	4:A:544:HOH:O	1.95	0.48
1:B:407:LEU:CD1	1:B:424:LEU:HD22	2.44	0.48
1:B:455:LEU:HD12	1:B:455:LEU:O	2.13	0.48
1:A:412:GLU:HG3	1:B:446:LEU:HG	1.96	0.48
1:A:425:LEU:O	1:A:426:ASP:HB3	2.14	0.48
1:A:258:GLU:HG3	1:A:258:GLU:O	2.13	0.48
1:A:262:ASP:CA	1:A:263:SER:CB	2.89	0.48
1:B:182:ALA:O	1:B:184:GLY:N	2.47	0.48
1:A:286:SER:O	1:A:290:GLN:HB2	2.13	0.48
1:B:205:LEU:CD1	1:B:479:VAL:HG22	2.35	0.47
1:B:389:HIS:ND1	1:B:430:ILE:HD11	2.29	0.47
1:A:37:VAL:HG22	1:A:182:ALA:CB	2.43	0.47
1:B:454:ASP:O	1:B:458:ILE:HG13	2.14	0.47
1:A:66:PRO:HG3	1:A:134:LEU:O	2.13	0.47
1:A:149:THR:HB	1:A:372:VAL:HG13	1.97	0.47
1:B:173:LEU:HD11	1:B:189:ILE:HD13	1.97	0.47
1:B:205:LEU:HD13	1:B:480:ARG:HB2	1.97	0.47
1:A:328:ILE:HG22	1:A:329:ASN:N	2.29	0.47
1:B:286:SER:O	1:B:290:GLN:HB2	2.14	0.47
1:B:401:LEU:O	1:B:405:ILE:HG13	2.15	0.47
1:A:435:ILE:O	1:B:440:LEU:HD12	2.14	0.47

Continued on next page...

Continued from previous page...

Atom-1	Atom-2	Interatomic distance (Å)	Clash overlap (Å)
1:B:254:ARG:HH21	1:B:338:GLN:HE22	1.59	0.47
1:B:448:ARG:O	1:B:452:ILE:HD12	2.15	0.47
1:A:387:ARG:NH2	1:A:454:ASP:OD2	2.47	0.46
1:A:436:LEU:HB3	1:B:441:ARG:HB3	1.97	0.46
1:B:425:LEU:O	1:B:426:ASP:HB3	2.14	0.46
1:B:230:THR:O	1:B:231:ALA:HB3	2.15	0.46
1:A:37:VAL:HG11	1:A:353:PRO:HG3	1.97	0.46
1:A:278:VAL:HG23	1:A:278:VAL:O	2.15	0.46
1:A:252:ARG:HH11	1:A:252:ARG:CG	2.29	0.46
1:A:471:LYS:HA	1:A:472:PRO:HD2	1.72	0.46
1:A:430:ILE:CG2	1:A:431:GLN:N	2.78	0.46
1:A:324:ALA:HB1	1:A:326:VAL:HG12	1.90	0.46
1:B:52:HIS:CD2	1:B:95:SER:HB3	2.51	0.46
1:A:75:ARG:NH2	1:B:83:ASN:HD22	2.14	0.46
1:A:474:ARG:O	1:A:478:ILE:HG13	2.16	0.45
1:B:160:VAL:CG1	1:B:161:GLN:N	2.78	0.45
1:B:376:ARG:O	1:B:380:ARG:HG3	2.17	0.45
1:B:87:HIS:C	1:B:89:ASP:N	2.69	0.45
1:A:77:VAL:HG11	1:A:89:ASP:HB2	1.99	0.45
1:A:198:ALA:CB	1:A:487:VAL:HG21	2.47	0.45
1:A:441:ARG:HB3	1:B:436:LEU:HB3	1.98	0.45
1:A:303:GLU:OE1	1:A:303:GLU:HA	2.17	0.45
1:A:329:ASN:O	1:A:333:LYS:HG3	2.16	0.45
1:B:252:ARG:HH11	1:B:252:ARG:CG	2.29	0.45
1:B:234:ILE:CD1	1:B:496:THR:HG21	2.47	0.45
1:A:424:LEU:HD22	1:A:424:LEU:C	2.37	0.44
1:A:448:ARG:O	1:A:452:ILE:HD12	2.17	0.44
1:A:455:LEU:HA	1:A:458:ILE:HG22	1.98	0.44
1:B:98:ARG:HE	2:B:509:MPD:HM3	1.82	0.44
1:B:381:LEU:HD11	1:B:462:ILE:HG23	2.00	0.44
1:A:384:ALA:HA	1:A:458:ILE:HD11	1.99	0.44
1:A:413:THR:OG1	1:A:416:ILE:HD12	2.17	0.44
1:B:290:GLN:NE2	1:B:334:HIS:HB3	2.33	0.44
1:A:47:GLY:CA	1:A:173:LEU:HB2	2.47	0.44
1:A:208:HIS:CD2	1:A:208:HIS:H	2.35	0.44
1:A:483:LEU:O	1:A:487:VAL:HG23	2.18	0.44
1:B:279:ASN:HB3	1:B:282:ASN:HB2	2.00	0.44
1:A:254:ARG:HH21	1:A:338:GLN:HE22	1.59	0.44
1:B:203:TRP:CE2	1:B:218:ALA:CB	3.01	0.43
1:A:418:ARG:NH1	1:A:433:GLN:HE22	1.99	0.43
1:B:373:ILE:HD12	1:B:373:ILE:HA	1.78	0.43

Continued on next page...

Continued from previous page...

Atom-1	Atom-2	Interatomic distance (Å)	Clash overlap (Å)
1:A:259:VAL:HG11	1:A:269:LEU:CD1	2.46	0.43
1:B:413:THR:OG1	1:B:416:ILE:HD12	2.18	0.43
1:A:271:ILE:HD12	1:A:273:GLU:O	2.19	0.43
1:B:169:ARG:HG3	1:B:169:ARG:NH1	2.32	0.43
1:B:271:ILE:HD12	1:B:273:GLU:O	2.19	0.43
1:B:290:GLN:HG3	1:B:295:LYS:HB3	2.00	0.43
1:B:65:ARG:HB2	1:B:66:PRO:HD2	2.01	0.43
1:B:66:PRO:HG3	1:B:134:LEU:O	2.19	0.43
1:A:254:ARG:HH21	1:A:338:GLN:HE21	1.65	0.43
1:A:291:VAL:CG2	1:A:296:LEU:HB3	2.49	0.43
1:B:169:ARG:NH2	1:B:482:GLU:OE1	2.41	0.43
1:A:29:ILE:HG22	1:A:30:ASP:N	2.33	0.42
1:B:376:ARG:HD3	1:B:380:ARG:CZ	2.49	0.42
1:A:9:ASP:HB3	1:A:10:ASP:H	1.60	0.42
1:B:306:SER:O	1:B:307:SER:HB3	2.18	0.42
1:B:471:LYS:HA	1:B:472:PRO:HD2	1.76	0.42
1:A:40:ALA:O	1:A:49:LYS:HD3	2.19	0.42
1:A:279:ASN:HB3	1:A:282:ASN:HB2	2.00	0.42
1:B:221:GLY:O	1:B:224:LYS:NZ	2.47	0.42
1:A:181:ILE:HD12	1:A:186:ALA:HB2	2.01	0.42
1:A:388:ALA:O	1:A:392:ARG:HG3	2.19	0.42
1:A:430:ILE:HG23	1:A:431:GLN:N	2.34	0.42
1:A:128:ARG:HB3	1:B:86:PRO:HB2	2.00	0.42
1:A:169:ARG:NH2	1:A:482:GLU:OE1	2.41	0.42
1:B:391:LEU:CD1	1:B:458:ILE:CD1	2.98	0.42
1:A:376:ARG:O	1:A:380:ARG:HG3	2.20	0.42
1:A:412:GLU:O	1:B:446:LEU:HG	2.19	0.42
1:B:52:HIS:HD2	1:B:95:SER:HB3	1.85	0.42
1:B:198:ALA:HB2	1:B:487:VAL:HG21	2.02	0.42
1:B:74:ALA:CA	1:B:127:MET:HE1	2.46	0.42
1:B:208:HIS:CD2	1:B:208:HIS:H	2.36	0.42
1:B:216:LEU:O	1:B:216:LEU:HD12	2.20	0.42
1:B:388:ALA:O	1:B:392:ARG:HG3	2.20	0.42
1:A:68:ARG:O	1:A:133:ARG:NH1	2.43	0.41
1:B:333:LYS:HG2	1:B:334:HIS:CE1	2.54	0.41
1:A:236:GLY:CA	1:A:499:ILE:HD11	2.50	0.41
1:A:46:ASP:OD1	1:A:53:ARG:NH1	2.53	0.41
1:B:262:ASP:OD2	1:B:264:ARG:HB2	2.20	0.41
1:A:370:LEU:O	1:A:374:VAL:HG13	2.20	0.41
1:B:430:ILE:HG13	1:B:431:GLN:N	2.35	0.41
1:A:262:ASP:HB2	1:A:264:ARG:HB2	2.01	0.41

Continued on next page...

Continued from previous page...

Atom-1	Atom-2	Interatomic distance (Å)	Clash overlap (Å)
1:B:199:ASP:HB3	1:B:222:ARG:HG2	2.02	0.41
1:B:216:LEU:HA	1:B:359:ASP:HB3	2.03	0.41
1:B:65:ARG:HB2	1:B:66:PRO:CD	2.51	0.41
1:B:98:ARG:HE	2:B:509:MPD:CM	2.34	0.41
1:B:234:ILE:HD12	1:B:496:THR:CG2	2.50	0.41
1:A:259:VAL:HG12	1:A:269:LEU:HD12	1.97	0.41
1:B:77:VAL:HB	1:B:127:MET:HE3	1.99	0.41
1:A:123:PRO:HA	1:A:124:PRO:HD3	1.89	0.41
1:A:252:ARG:NH1	1:A:252:ARG:CG	2.84	0.41
1:A:262:ASP:HB2	1:A:264:ARG:H	1.73	0.41
1:A:376:ARG:HD3	1:A:380:ARG:CZ	2.51	0.41
1:B:180:GLY:O	1:B:186:ALA:HB1	2.21	0.41
1:A:234:ILE:HD12	1:A:496:THR:HG22	2.03	0.41
1:A:262:ASP:CB	1:A:264:ARG:HB2	2.51	0.41
1:B:389:HIS:HE1	1:B:428:ASP:OD2	2.03	0.41
1:A:203:TRP:CE2	1:A:218:ALA:CB	3.04	0.40
1:A:400:ALA:O	1:A:404:VAL:HG13	2.21	0.40
1:A:464:ASP:OD1	1:A:474:ARG:NH2	2.38	0.40
1:A:260:GLU:HG2	1:A:261:GLU:H	1.85	0.40
1:A:16:GLU:HB3	1:A:19:ASP:OD2	2.22	0.40
1:A:382:ARG:O	1:A:386:GLU:HG3	2.22	0.40
1:B:77:VAL:CG1	1:B:127:MET:HE3	2.52	0.40
1:B:313:ARG:HG2	1:B:313:ARG:O	2.20	0.40
1:B:471:LYS:O	1:B:474:ARG:HB2	2.21	0.40
1:A:203:TRP:CE2	1:A:218:ALA:HB1	2.57	0.40

There are no symmetry-related clashes.

5.3 Torsion angles [i](#)

5.3.1 Protein backbone [i](#)

In the following table, the Percentiles column shows the percent Ramachandran outliers of the chain as a percentile score with respect to all X-ray entries followed by that with respect to entries of similar resolution.

The Analysed column shows the number of residues for which the backbone conformation was analysed, and the total number of residues.

Mol	Chain	Analysed	Favoured	Allowed	Outliers	Percentiles
1	A	483/508 (95%)	449 (93%)	32 (7%)	2 (0%)	34 60

Continued on next page...

Continued from previous page...

Mol	Chain	Analysed	Favoured	Allowed	Outliers	Percentiles	
1	B	471/508 (93%)	445 (94%)	22 (5%)	4 (1%)	19	43
All	All	954/1016 (94%)	894 (94%)	54 (6%)	6 (1%)	25	50

All (6) Ramachandran outliers are listed below:

Mol	Chain	Res	Type
1	A	13	ASP
1	B	171	PRO
1	B	86	PRO
1	B	231	ALA
1	B	183	VAL
1	A	15	ILE

5.3.2 Protein sidechains [i](#)

In the following table, the Percentiles column shows the percent sidechain outliers of the chain as a percentile score with respect to all X-ray entries followed by that with respect to entries of similar resolution.

The Analysed column shows the number of residues for which the sidechain conformation was analysed, and the total number of residues.

Mol	Chain	Analysed	Rotameric	Outliers	Percentiles	
1	A	409/427 (96%)	377 (92%)	32 (8%)	12	29
1	B	391/427 (92%)	364 (93%)	27 (7%)	15	35
All	All	800/854 (94%)	741 (93%)	59 (7%)	13	32

All (59) residues with a non-rotameric sidechain are listed below:

Mol	Chain	Res	Type
1	A	9	ASP
1	A	11	SER
1	A	14	ARG
1	A	15	ILE
1	A	29	ILE
1	A	34	SER
1	A	35	VAL
1	A	43	GLU
1	A	44	VAL
1	A	51	VAL

Continued on next page...

Continued from previous page...

Mol	Chain	Res	Type
1	A	122	ASP
1	A	141	MET
1	A	143	ARG
1	A	178	SER
1	A	246	THR
1	A	262	ASP
1	A	263	SER
1	A	271	ILE
1	A	306	SER
1	A	307	SER
1	A	308	ASP
1	A	328	ILE
1	A	339	THR
1	A	363	ARG
1	A	373	ILE
1	A	374	VAL
1	A	401	LEU
1	A	402	ASP
1	A	403	GLU
1	A	405	ILE
1	A	424	LEU
1	A	454	ASP
1	B	34	SER
1	B	35	VAL
1	B	41	LEU
1	B	43	GLU
1	B	91	SER
1	B	122	ASP
1	B	141	MET
1	B	143	ARG
1	B	178	SER
1	B	209	ASP
1	B	213	GLU
1	B	222	ARG
1	B	246	THR
1	B	268	SER
1	B	271	ILE
1	B	290	GLN
1	B	292	ARG
1	B	308	ASP
1	B	339	THR
1	B	344	ASN

Continued on next page...

Continued from previous page...

Mol	Chain	Res	Type
1	B	363	ARG
1	B	373	ILE
1	B	401	LEU
1	B	402	ASP
1	B	405	ILE
1	B	455	LEU
1	B	458	ILE

Sometimes sidechains can be flipped to improve hydrogen bonding and reduce clashes. All (23) such sidechains are listed below:

Mol	Chain	Res	Type
1	A	25	GLN
1	A	83	ASN
1	A	85	HIS
1	A	208	HIS
1	A	338	GLN
1	A	368	HIS
1	A	369	GLN
1	A	389	HIS
1	A	433	GLN
1	A	475	GLN
1	B	52	HIS
1	B	83	ASN
1	B	85	HIS
1	B	208	HIS
1	B	238	GLN
1	B	290	GLN
1	B	329	ASN
1	B	338	GLN
1	B	344	ASN
1	B	368	HIS
1	B	369	GLN
1	B	389	HIS
1	B	475	GLN

5.3.3 RNA

There are no RNA molecules in this entry.

5.4 Non-standard residues in protein, DNA, RNA chains [i](#)

There are no non-standard protein/DNA/RNA residues in this entry.

5.5 Carbohydrates [i](#)

There are no monosaccharides in this entry.

5.6 Ligand geometry [i](#)

Of 4 ligands modelled in this entry, 2 are monoatomic - leaving 2 for Mogul analysis.

In the following table, the Counts columns list the number of bonds (or angles) for which Mogul statistics could be retrieved, the number of bonds (or angles) that are observed in the model and the number of bonds (or angles) that are defined in the Chemical Component Dictionary. The Link column lists molecule types, if any, to which the group is linked. The Z score for a bond length (or angle) is the number of standard deviations the observed value is removed from the expected value. A bond length (or angle) with $|Z| > 2$ is considered an outlier worth inspection. RMSZ is the root-mean-square of all Z scores of the bond lengths (or angles).

Mol	Type	Chain	Res	Link	Bond lengths			Bond angles		
					Counts	RMSZ	# Z > 2	Counts	RMSZ	# Z > 2
2	MPD	A	509	-	7,7,7	0.56	0	9,10,10	0.88	0
2	MPD	B	509	-	7,7,7	0.68	0	9,10,10	0.59	0

In the following table, the Chirals column lists the number of chiral outliers, the number of chiral centers analysed, the number of these observed in the model and the number defined in the Chemical Component Dictionary. Similar counts are reported in the Torsion and Rings columns. '-' means no outliers of that kind were identified.

Mol	Type	Chain	Res	Link	Chirals	Torsions	Rings
2	MPD	A	509	-	-	1/5/5/5	-
2	MPD	B	509	-	-	2/5/5/5	-

There are no bond length outliers.

There are no bond angle outliers.

There are no chirality outliers.

All (3) torsion outliers are listed below:

Mol	Chain	Res	Type	Atoms
2	A	509	MPD	C2-C3-C4-C5
2	B	509	MPD	C2-C3-C4-C5

Continued on next page...

Continued from previous page...

Mol	Chain	Res	Type	Atoms
2	B	509	MPD	C2-C3-C4-O4

There are no ring outliers.

2 monomers are involved in 18 short contacts:

Mol	Chain	Res	Type	Clashes	Symm-Clashes
2	A	509	MPD	9	0
2	B	509	MPD	9	0

5.7 Other polymers [i](#)

There are no such residues in this entry.

5.8 Polymer linkage issues [i](#)

There are no chain breaks in this entry.

6 Fit of model and data

6.1 Protein, DNA and RNA chains

In the following table, the column labelled ‘#RSRZ > 2’ contains the number (and percentage) of RSRZ outliers, followed by percent RSRZ outliers for the chain as percentile scores relative to all X-ray entries and entries of similar resolution. The OWAB column contains the minimum, median, 95th percentile and maximum values of the occupancy-weighted average B-factor per residue. The column labelled ‘Q < 0.9’ lists the number of (and percentage) of residues with an average occupancy less than 0.9.

Mol	Chain	Analysed	<RSRZ>	#RSRZ>2	OWAB(Å ²)	Q<0.9
1	A	487/508 (95%)	-0.05	22 (4%) 33 31	29, 56, 109, 144	0
1	B	473/508 (93%)	-0.27	12 (2%) 57 59	26, 50, 80, 121	0
All	All	960/1016 (94%)	-0.16	34 (3%) 44 44	26, 53, 103, 144	0

All (34) RSRZ outliers are listed below:

Mol	Chain	Res	Type	RSRZ
1	A	182	ALA	4.8
1	A	322	ALA	4.7
1	A	9	ASP	4.6
1	B	182	ALA	4.5
1	A	319	LYS	4.5
1	A	14	ARG	4.5
1	A	321	ASP	4.2
1	A	309	ARG	4.1
1	B	183	VAL	4.0
1	A	264	ARG	3.9
1	A	13	ASP	3.7
1	A	16	GLU	3.6
1	A	320	ARG	3.6
1	B	33	MET	3.5
1	A	183	VAL	3.5
1	A	12	LEU	3.4
1	B	181	ILE	3.4
1	A	15	ILE	3.2
1	B	185	MET	3.2
1	A	263	SER	3.2
1	B	184	GLY	3.2
1	A	11	SER	3.0
1	B	31	TYR	2.8
1	A	180	GLY	2.7

Continued on next page...

Continued from previous page...

Mol	Chain	Res	Type	RSRZ
1	B	501	ALA	2.7
1	B	213	GLU	2.6
1	A	184	GLY	2.5
1	B	293	ASP	2.5
1	A	294	GLY	2.4
1	A	323	VAL	2.2
1	A	31	TYR	2.2
1	A	19	ASP	2.1
1	B	426	ASP	2.1
1	B	30	ASP	2.1

6.2 Non-standard residues in protein, DNA, RNA chains [i](#)

There are no non-standard protein/DNA/RNA residues in this entry.

6.3 Carbohydrates [i](#)

There are no monosaccharides in this entry.

6.4 Ligands [i](#)

In the following table, the Atoms column lists the number of modelled atoms in the group and the number defined in the chemical component dictionary. The B-factors column lists the minimum, median, 95th percentile and maximum values of B factors of atoms in the group. The column labelled 'Q< 0.9' lists the number of atoms with occupancy less than 0.9.

Mol	Type	Chain	Res	Atoms	RSCC	RSR	B-factors(Å ²)	Q<0.9
2	MPD	A	509	8/8	0.82	0.38	96,97,99,99	0
2	MPD	B	509	8/8	0.93	0.26	63,65,67,67	0
3	NA	A	510	1/1	0.96	0.31	54,54,54,54	0
3	NA	B	510	1/1	0.96	0.21	77,77,77,77	0

6.5 Other polymers [i](#)

There are no such residues in this entry.