



# Full wwPDB X-ray Structure Validation Report ⓘ

May 26, 2020 – 11:56 pm BST

PDB ID : 4IHG  
Title : Chasing Acyl Carrier Protein Through a Catalytic Cycle of Lipid A Production  
Authors : Masoudi, A.; Raetz, C.R.H.; Pemble, C.W.  
Deposited on : 2012-12-18  
Resolution : 2.89 Å(reported)

This is a Full wwPDB X-ray Structure Validation Report for a publicly released PDB entry.

We welcome your comments at [validation@mail.wwpdb.org](mailto:validation@mail.wwpdb.org)

A user guide is available at

<https://www.wwpdb.org/validation/2017/XrayValidationReportHelp>

with specific help available everywhere you see the ⓘ symbol.

---

The following versions of software and data (see [references ⓘ](#)) were used in the production of this report:

MolProbity : 4.02b-467  
Mogul : 1.8.5 (274361), CSD as541be (2020)  
Xtriage (Phenix) : 1.13  
EDS : 2.11  
buster-report : 1.1.7 (2018)  
Percentile statistics : 20191225.v01 (using entries in the PDB archive December 25th 2019)  
Refmac : 5.8.0158  
CCP4 : 7.0.044 (Gargrove)  
Ideal geometry (proteins) : Engh & Huber (2001)  
Ideal geometry (DNA, RNA) : Parkinson et al. (1996)  
Validation Pipeline (wwPDB-VP) : 2.11

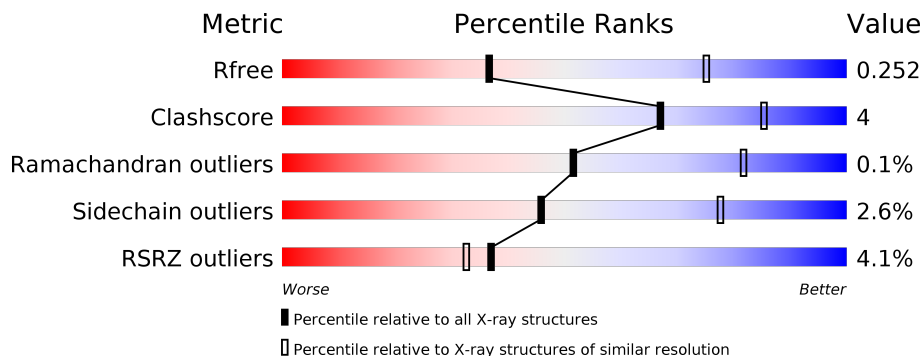
# 1 Overall quality at a glance i

The following experimental techniques were used to determine the structure:

*X-RAY DIFFRACTION*

The reported resolution of this entry is 2.89 Å.

Percentile scores (ranging between 0-100) for global validation metrics of the entry are shown in the following graphic. The table shows the number of entries on which the scores are based.



Metric	Whole archive (#Entries)	Similar resolution (#Entries, resolution range(Å))
$R_{free}$	130704	1957 (2.90-2.90)
Clashscore	141614	2172 (2.90-2.90)
Ramachandran outliers	138981	2115 (2.90-2.90)
Sidechain outliers	138945	2117 (2.90-2.90)
RSRZ outliers	127900	1906 (2.90-2.90)

The table below summarises the geometric issues observed across the polymeric chains and their fit to the electron density. The red, orange, yellow and green segments on the lower bar indicate the fraction of residues that contain outliers for  $\geq 3$ , 2, 1 and 0 types of geometric quality criteria respectively. A grey segment represents the fraction of residues that are not modelled. The numeric value for each fraction is indicated below the corresponding segment, with a dot representing fractions  $\leq 5\%$ . The upper red bar (where present) indicates the fraction of residues that have poor fit to the electron density. The numeric value is given above the bar.

Mol	Chain	Length	Quality of chain
1	A	348	<div style="display: flex; align-items: center;"> <div style="width: 100%; height: 15px; background: linear-gradient(to right, red 1%, orange 1%, yellow 1%, green 90%, grey 5%);"></div> <div style="margin-left: 5px;"> <p>%</p> <p>90% 5% .</p> </div> </div>
1	B	348	<div style="display: flex; align-items: center;"> <div style="width: 100%; height: 15px; background: linear-gradient(to right, red 1%, orange 1%, yellow 1%, green 89%, grey 7%);"></div> <div style="margin-left: 5px;"> <p>%</p> <p>89% 7% .</p> </div> </div>
1	C	348	<div style="display: flex; align-items: center;"> <div style="width: 100%; height: 15px; background: linear-gradient(to right, red 1%, orange 1%, yellow 1%, green 87%, grey 8%);"></div> <div style="margin-left: 5px;"> <p>%</p> <p>87% 8% 5%</p> </div> </div>
1	D	348	<div style="display: flex; align-items: center;"> <div style="width: 100%; height: 15px; background: linear-gradient(to right, red 3%, orange 1%, yellow 1%, green 87%, grey 7%);"></div> <div style="margin-left: 5px;"> <p>3%</p> <p>87% 7% . 5%</p> </div> </div>
1	E	348	<div style="display: flex; align-items: center;"> <div style="width: 100%; height: 15px; background: linear-gradient(to right, red 2%, orange 1%, yellow 1%, green 89%, grey 7%);"></div> <div style="margin-left: 5px;"> <p>2%</p> <p>89% 7% .</p> </div> </div>
1	F	348	<div style="display: flex; align-items: center;"> <div style="width: 100%; height: 15px; background: linear-gradient(to right, green 90%, yellow 5%, grey 5%);"></div> <div style="margin-left: 5px;"> <p>90% 5% 5%</p> </div> </div>

*Continued on next page...*

Continued from previous page...

Mol	Chain	Length	Quality of chain
2	G	80	
2	H	80	
2	I	80	
2	J	80	
2	K	80	
2	L	80	

The following table lists non-polymeric compounds, carbohydrate monomers and non-standard residues in protein, DNA, RNA chains that are outliers for geometric or electron-density-fit criteria:

Mol	Type	Chain	Res	Chirality	Geometry	Clashes	Electron density
3	FTT	C	401	-	-	X	-

## 2 Entry composition [i](#)

There are 5 unique types of molecules in this entry. The entry contains 35552 atoms, of which 17828 are hydrogens and 0 are deuteriums.

In the tables below, the ZeroOcc column contains the number of atoms modelled with zero occupancy, the AltConf column contains the number of residues with at least one atom in alternate conformation and the Trace column contains the number of residues modelled with at most 2 atoms.

- Molecule 1 is a protein called UDP-3-O-(3-hydroxymyristoyl)glucosamine N-acyltransferase.

Mol	Chain	Residues	Atoms						ZeroOcc	AltConf	Trace
			Total	C	H	N	O	S			
1	A	334	4952	1533	2496	435	469	19	0	0	0
1	B	333	4933	1527	2487	432	468	19	0	0	0
1	C	332	4923	1524	2482	431	467	19	0	0	0
1	D	331	4908	1519	2476	430	464	19	0	0	0
1	E	337	5009	1548	2528	441	473	19	0	0	0
1	F	331	4908	1519	2476	430	464	19	0	0	0

There are 54 discrepancies between the modelled and reference sequences:

Chain	Residue	Modelled	Actual	Comment	Reference
A	-7	MET	-	EXPRESSION TAG	UNP P21645
A	-6	GLY	-	EXPRESSION TAG	UNP P21645
A	-5	HIS	-	EXPRESSION TAG	UNP P21645
A	-4	HIS	-	EXPRESSION TAG	UNP P21645
A	-3	HIS	-	EXPRESSION TAG	UNP P21645
A	-2	HIS	-	EXPRESSION TAG	UNP P21645
A	-1	HIS	-	EXPRESSION TAG	UNP P21645
A	0	HIS	-	EXPRESSION TAG	UNP P21645
A	2	ALA	-	EXPRESSION TAG	UNP P21645
B	-6	MET	-	EXPRESSION TAG	UNP P21645
B	-5	GLY	-	EXPRESSION TAG	UNP P21645
B	-4	HIS	-	EXPRESSION TAG	UNP P21645
B	-3	HIS	-	EXPRESSION TAG	UNP P21645
B	-2	HIS	-	EXPRESSION TAG	UNP P21645
B	-1	HIS	-	EXPRESSION TAG	UNP P21645
B	0	HIS	-	EXPRESSION TAG	UNP P21645
B	1	HIS	-	EXPRESSION TAG	UNP P21645

*Continued on next page...*

*Continued from previous page...*

Chain	Residue	Modelled	Actual	Comment	Reference
B	2	ALA	-	EXPRESSION TAG	UNP P21645
C	-6	MET	-	EXPRESSION TAG	UNP P21645
C	-5	GLY	-	EXPRESSION TAG	UNP P21645
C	-4	HIS	-	EXPRESSION TAG	UNP P21645
C	-3	HIS	-	EXPRESSION TAG	UNP P21645
C	-2	HIS	-	EXPRESSION TAG	UNP P21645
C	-1	HIS	-	EXPRESSION TAG	UNP P21645
C	0	HIS	-	EXPRESSION TAG	UNP P21645
C	1	HIS	-	EXPRESSION TAG	UNP P21645
C	2	ALA	-	EXPRESSION TAG	UNP P21645
D	-6	MET	-	EXPRESSION TAG	UNP P21645
D	-5	GLY	-	EXPRESSION TAG	UNP P21645
D	-4	HIS	-	EXPRESSION TAG	UNP P21645
D	-3	HIS	-	EXPRESSION TAG	UNP P21645
D	-2	HIS	-	EXPRESSION TAG	UNP P21645
D	-1	HIS	-	EXPRESSION TAG	UNP P21645
D	0	HIS	-	EXPRESSION TAG	UNP P21645
D	1	HIS	-	EXPRESSION TAG	UNP P21645
D	2	ALA	-	EXPRESSION TAG	UNP P21645
E	-6	MET	-	EXPRESSION TAG	UNP P21645
E	-5	GLY	-	EXPRESSION TAG	UNP P21645
E	-4	HIS	-	EXPRESSION TAG	UNP P21645
E	-3	HIS	-	EXPRESSION TAG	UNP P21645
E	-2	HIS	-	EXPRESSION TAG	UNP P21645
E	-1	HIS	-	EXPRESSION TAG	UNP P21645
E	0	HIS	-	EXPRESSION TAG	UNP P21645
E	1	HIS	-	EXPRESSION TAG	UNP P21645
E	2	ALA	-	EXPRESSION TAG	UNP P21645
F	-6	MET	-	EXPRESSION TAG	UNP P21645
F	-5	GLY	-	EXPRESSION TAG	UNP P21645
F	-4	HIS	-	EXPRESSION TAG	UNP P21645
F	-3	HIS	-	EXPRESSION TAG	UNP P21645
F	-2	HIS	-	EXPRESSION TAG	UNP P21645
F	-1	HIS	-	EXPRESSION TAG	UNP P21645
F	0	HIS	-	EXPRESSION TAG	UNP P21645
F	1	HIS	-	EXPRESSION TAG	UNP P21645
F	2	ALA	-	EXPRESSION TAG	UNP P21645

- Molecule 2 is a protein called Acyl carrier protein.

Mol	Chain	Residues	Atoms					ZeroOcc	AltConf	Trace	
			Total	C	H	N	O				S
2	G	63	972	309	478	72	111	2	0	0	0

*Continued on next page...*

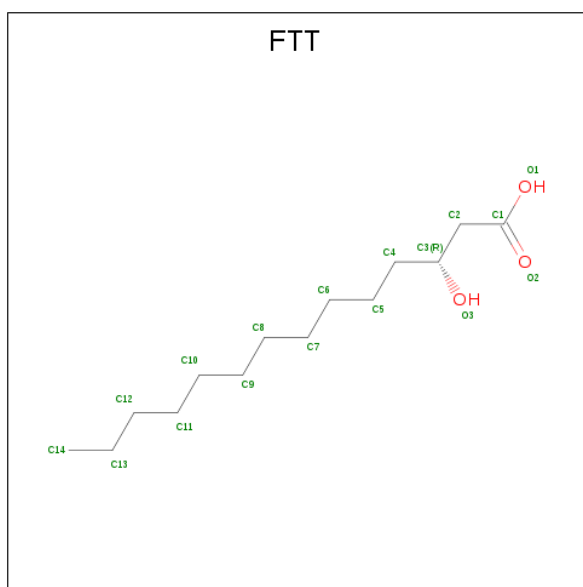
Continued from previous page...

Mol	Chain	Residues	Atoms					ZeroOcc	AltConf	Trace	
2	H	72	Total	C	H	N	O	S	0	0	0
			1097	347	538	85	126	1			
2	I	49	Total	C	H	N	O	S	0	0	0
			757	242	374	57	83	1			
2	J	75	Total	C	H	N	O	S	0	0	0
			1140	359	560	88	131	2			
2	K	69	Total	C	H	N	O	S	0	0	0
			1057	335	518	81	122	1			
2	L	10	Total	C	H	N	O	S	0	0	0
			149	47	73	10	18	1			

There are 12 discrepancies between the modelled and reference sequences:

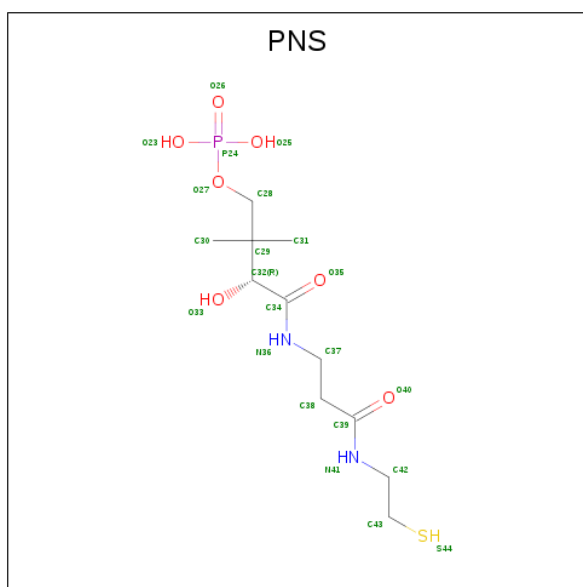
Chain	Residue	Modelled	Actual	Comment	Reference
G	-2	SER	-	EXPRESSION TAG	UNP G7RM21
G	-1	HIS	-	EXPRESSION TAG	UNP G7RM21
H	-2	SER	-	EXPRESSION TAG	UNP G7RM21
H	-1	HIS	-	EXPRESSION TAG	UNP G7RM21
I	-2	SER	-	EXPRESSION TAG	UNP G7RM21
I	-1	HIS	-	EXPRESSION TAG	UNP G7RM21
J	-2	SER	-	EXPRESSION TAG	UNP G7RM21
J	-1	HIS	-	EXPRESSION TAG	UNP G7RM21
K	-2	SER	-	EXPRESSION TAG	UNP G7RM21
K	-1	HIS	-	EXPRESSION TAG	UNP G7RM21
L	-2	SER	-	EXPRESSION TAG	UNP G7RM21
L	-1	HIS	-	EXPRESSION TAG	UNP G7RM21

- Molecule 3 is 3-HYDROXY-TETRADECANOIC ACID (three-letter code: FTT) (formula: C<sub>14</sub>H<sub>28</sub>O<sub>3</sub>).



Mol	Chain	Residues	Atoms			ZeroOcc	AltConf	
3	A	1	Total	C	H	O	0	0
			44	14	27	3		
3	B	1	Total	C	H	O	0	0
			44	14	27	3		
3	B	1	Total	C	H	O	0	0
			44	14	27	3		
3	C	1	Total	C	H	O	0	0
			44	14	27	3		
3	D	1	Total	C	H	O	0	0
			44	14	27	3		
3	E	1	Total	C	H	O	0	0
			44	14	27	3		
3	E	1	Total	C	H	O	0	0
			44	14	27	3		
3	F	1	Total	C	H	O	0	0
			44	14	27	3		

- Molecule 4 is 4'-PHOSPHOPANTETHEINE (three-letter code: PNS) (formula: C<sub>11</sub>H<sub>23</sub>N<sub>2</sub>O<sub>7</sub>PS).



Mol	Chain	Residues	Atoms							ZeroOcc	AltConf
			Total	C	H	N	O	P	S		
4	G	1	Total	C	H	N	O	P	S	0	0
			42	11	21	2	6	1	1		
4	H	1	Total	C	H	N	O	P	S	0	0
			42	11	21	2	6	1	1		
4	I	1	Total	C	H	N	O	P	S	0	0
			42	11	21	2	6	1	1		
4	J	1	Total	C	H	N	O	P	S	0	0
			42	11	21	2	6	1	1		
4	K	1	Total	C	H	N	O	P	S	0	0
			42	11	21	2	6	1	1		
4	L	1	Total	C	H	N	O	P	S	0	0
			42	11	21	2	6	1	1		

- Molecule 5 is water.

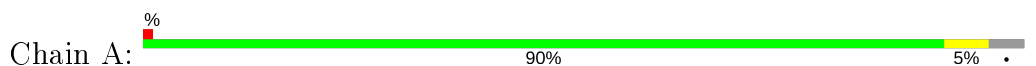
Mol	Chain	Residues	Atoms		ZeroOcc	AltConf
5	A	29	Total	O	0	0
			29	29		
5	B	22	Total	O	0	0
			22	22		
5	C	20	Total	O	0	0
			20	20		
5	D	15	Total	O	0	0
			15	15		
5	E	32	Total	O	0	0
			32	32		
5	F	25	Total	O	0	0
			25	25		



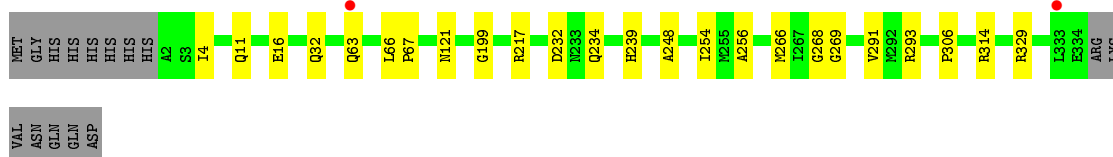
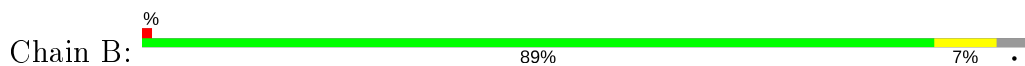
### 3 Residue-property plots [i](#)

These plots are drawn for all protein, RNA and DNA chains in the entry. The first graphic for a chain summarises the proportions of the various outlier classes displayed in the second graphic. The second graphic shows the sequence view annotated by issues in geometry and electron density. Residues are color-coded according to the number of geometric quality criteria for which they contain at least one outlier: green = 0, yellow = 1, orange = 2 and red = 3 or more. A red dot above a residue indicates a poor fit to the electron density ( $RSRZ > 2$ ). Stretches of 2 or more consecutive residues without any outlier are shown as a green connector. Residues present in the sample, but not in the model, are shown in grey.

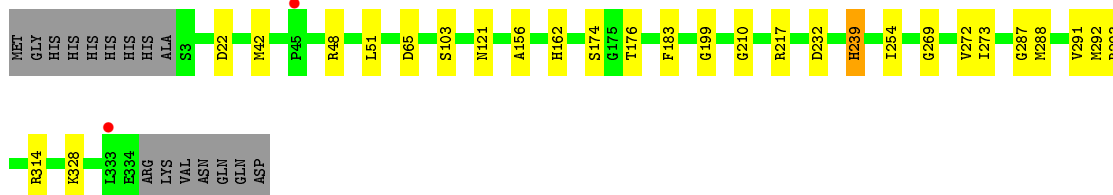
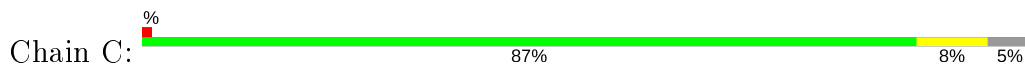
- Molecule 1: UDP-3-O-(3-hydroxymyristoyl)glucosamine N-acyltransferase



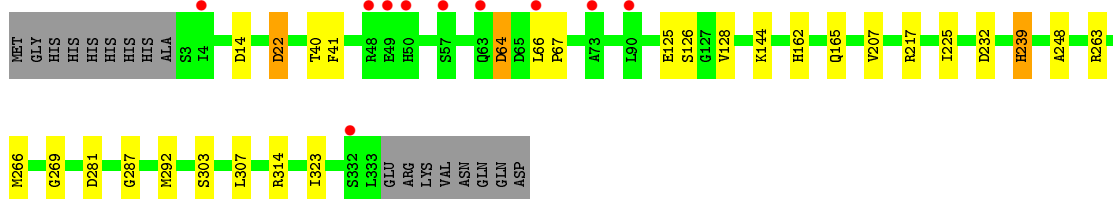
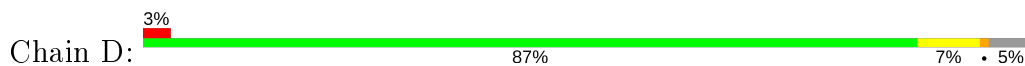
- Molecule 1: UDP-3-O-(3-hydroxymyristoyl)glucosamine N-acyltransferase



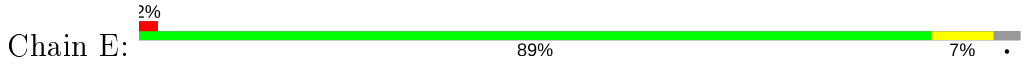
- Molecule 1: UDP-3-O-(3-hydroxymyristoyl)glucosamine N-acyltransferase



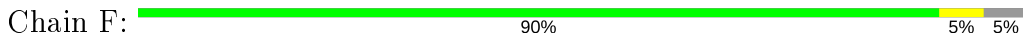
- Molecule 1: UDP-3-O-(3-hydroxymyristoyl)glucosamine N-acyltransferase



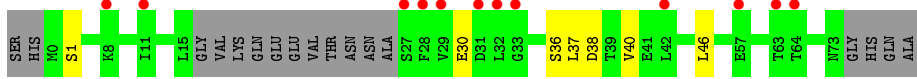
• Molecule 1: UDP-3-O-(3-hydroxymyristoyl)glucosamine N-acyltransferase



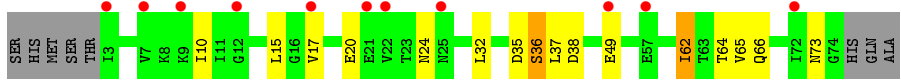
• Molecule 1: UDP-3-O-(3-hydroxymyristoyl)glucosamine N-acyltransferase



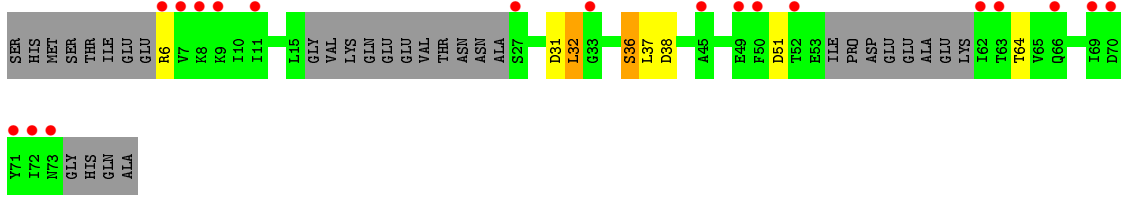
• Molecule 2: Acyl carrier protein



• Molecule 2: Acyl carrier protein



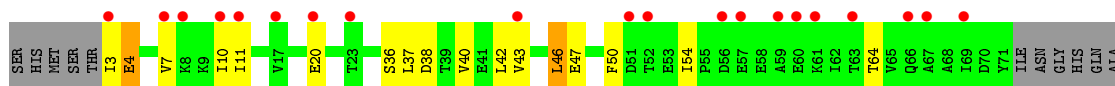
• Molecule 2: Acyl carrier protein



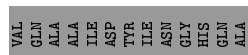
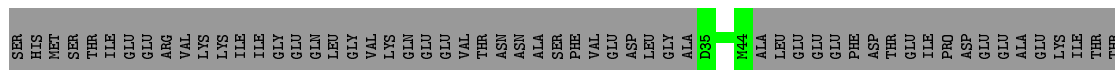
• Molecule 2: Acyl carrier protein



- Molecule 2: Acyl carrier protein



- Molecule 2: Acyl carrier protein



## 4 Data and refinement statistics

Property	Value	Source
Space group	P 1	Depositor
Cell constants a, b, c, $\alpha$ , $\beta$ , $\gamma$	84.18Å 89.31Å 111.93Å 104.09° 92.58° 118.64°	Depositor
Resolution (Å)	28.43 – 2.89 43.90 – 2.89	Depositor EDS
% Data completeness (in resolution range)	94.5 (28.43-2.89) 94.6 (43.90-2.89)	Depositor EDS
$R_{merge}$	0.09	Depositor
$R_{sym}$	(Not available)	Depositor
$\langle I/\sigma(I) \rangle$ <sup>1</sup>	5.95 (at 2.90Å)	Xtrriage
Refinement program	PHENIX dev_1232	Depositor
R, $R_{free}$	0.204 , 0.253 0.205 , 0.252	Depositor DCC
$R_{free}$ test set	1962 reflections (3.28%)	wwPDB-VP
Wilson B-factor (Å <sup>2</sup> )	25.5	Xtrriage
Anisotropy	0.680	Xtrriage
Bulk solvent $k_{sol}$ (e/Å <sup>3</sup> ), $B_{sol}$ (Å <sup>2</sup> )	0.37 , 32.0	EDS
L-test for twinning <sup>2</sup>	$\langle  L  \rangle = 0.51$ , $\langle L^2 \rangle = 0.34$	Xtrriage
Estimated twinning fraction	0.000 for h,-h-k,-l	Xtrriage
$F_o, F_c$ correlation	0.92	EDS
Total number of atoms	35552	wwPDB-VP
Average B, all atoms (Å <sup>2</sup> )	49.0	wwPDB-VP

Xtrriage's analysis on translational NCS is as follows: *The largest off-origin peak in the Patterson function is 6.73% of the height of the origin peak. No significant pseudotranslation is detected.*

<sup>1</sup>Intensities estimated from amplitudes.

<sup>2</sup>Theoretical values of  $\langle |L| \rangle$ ,  $\langle L^2 \rangle$  for acentric reflections are 0.5, 0.333 respectively for untwinned datasets, and 0.375, 0.2 for perfectly twinned datasets.

## 5 Model quality [i](#)

### 5.1 Standard geometry [i](#)

Bond lengths and bond angles in the following residue types are not validated in this section: PNS, FTT

The Z score for a bond length (or angle) is the number of standard deviations the observed value is removed from the expected value. A bond length (or angle) with  $|Z| > 5$  is considered an outlier worth inspection. RMSZ is the root-mean-square of all Z scores of the bond lengths (or angles).

Mol	Chain	Bond lengths		Bond angles	
		RMSZ	# Z  >5	RMSZ	# Z  >5
1	A	0.27	0/2490	0.45	0/3379
1	B	0.27	0/2479	0.44	0/3364
1	C	0.27	0/2474	0.45	0/3357
1	D	0.26	0/2465	0.44	0/3345
1	E	0.27	0/2514	0.45	0/3410
1	F	0.27	0/2465	0.44	0/3345
2	G	0.29	0/496	0.55	0/669
2	H	0.34	0/562	0.65	0/760
2	I	0.32	0/383	0.71	0/515
2	J	0.30	0/583	0.57	0/788
2	K	0.36	0/542	0.73	0/733
2	L	0.32	0/75	0.52	0/101
All	All	0.28	0/17528	0.48	0/23766

There are no bond length outliers.

There are no bond angle outliers.

There are no chirality outliers.

There are no planarity outliers.

### 5.2 Too-close contacts [i](#)

In the following table, the Non-H and H(model) columns list the number of non-hydrogen atoms and hydrogen atoms in the chain respectively. The H(added) column lists the number of hydrogen atoms added and optimized by MolProbity. The Clashes column lists the number of clashes within the asymmetric unit, whereas Symm-Clashes lists symmetry related clashes.

Mol	Chain	Non-H	H(model)	H(added)	Clashes	Symm-Clashes
1	A	2456	2496	2491	12	0

*Continued on next page...*

*Continued from previous page...*

Mol	Chain	Non-H	H(model)	H(added)	Clashes	Symm-Clashes
1	B	2446	2487	2481	19	0
1	C	2441	2482	2476	20	0
1	D	2432	2476	2470	21	0
1	E	2481	2528	2522	15	0
1	F	2432	2476	2470	12	0
2	G	494	478	480	5	0
2	H	559	538	538	11	0
2	I	383	374	374	4	0
2	J	580	560	562	13	0
2	K	539	518	518	11	0
2	L	76	73	73	0	0
3	A	17	27	27	6	0
3	B	34	54	54	12	0
3	C	17	27	27	9	0
3	D	17	27	27	3	0
3	E	34	54	54	11	0
3	F	17	27	27	3	0
4	G	21	21	21	2	0
4	H	21	21	21	3	0
4	I	21	21	21	3	0
4	J	21	21	21	6	0
4	K	21	21	21	0	0
4	L	21	21	21	3	0
5	A	29	0	0	1	0
5	B	22	0	0	0	0
5	C	20	0	0	0	0
5	D	15	0	0	0	0
5	E	32	0	0	1	0
5	F	25	0	0	0	0
All	All	17724	17828	17797	139	0

The all-atom clashscore is defined as the number of clashes found per 1000 atoms (including hydrogen atoms). The all-atom clashscore for this structure is 4.

All (139) close contacts within the same asymmetric unit are listed below, sorted by their clash magnitude.

Atom-1	Atom-2	Interatomic distance (Å)	Clash overlap (Å)
1:B:269:GLY:HA3	3:C:401:FTT:H81	1.44	0.97
1:B:232:ASP:OD2	3:C:401:FTT:H41	1.71	0.91
2:J:28:PHE:HA	2:J:32:LEU:HD13	1.58	0.86
1:B:232:ASP:OD2	3:C:401:FTT:C4	2.24	0.85

*Continued on next page...*

*Continued from previous page...*

Atom-1	Atom-2	Interatomic distance (Å)	Clash overlap (Å)
3:E:401:FTT:H111	4:J:101:PNS:H382	1.58	0.84
1:A:293:ARG:NH2	2:I:38:ASP:OD1	2.10	0.84
1:F:162:HIS:O	1:F:217:ARG:NH2	2.13	0.81
1:C:239:HIS:NE2	3:C:401:FTT:O2	2.14	0.81
3:B:402:FTT:H42	1:C:183:PHE:HE2	1.46	0.80
2:J:17:VAL:HG21	2:J:32:LEU:HD23	1.68	0.76
1:F:199:GLY:O	1:F:217:ARG:NH1	2.22	0.73
1:D:162:HIS:O	1:D:217:ARG:NH2	2.21	0.72
2:J:15:LEU:HD12	2:J:32:LEU:HD22	1.69	0.72
1:E:162:HIS:O	1:E:217:ARG:NH2	2.22	0.72
2:J:35:ASP:OD1	2:J:38:ASP:N	2.23	0.71
3:B:402:FTT:H42	1:C:183:PHE:CE2	2.25	0.71
1:D:239:HIS:NE2	3:D:401:FTT:O2	2.24	0.71
1:C:199:GLY:O	1:C:217:ARG:NH1	2.25	0.69
1:B:266:MET:HB3	3:B:402:FTT:H72	1.75	0.69
4:J:101:PNS:H313	4:J:101:PNS:O35	1.92	0.69
1:D:287:GLY:HA3	3:E:401:FTT:H122	1.74	0.68
1:B:293:ARG:NH1	2:G:38:ASP:OD1	2.27	0.68
3:D:401:FTT:H22	4:L:101:PNS:S44	2.35	0.67
1:E:199:GLY:O	1:E:217:ARG:NH1	2.28	0.66
2:J:34:ALA:HB1	2:J:38:ASP:HB3	1.77	0.66
3:E:402:FTT:H112	4:J:101:PNS:H372	1.76	0.66
1:F:293:ARG:NH2	2:K:38:ASP:OD1	2.29	0.65
2:J:37:LEU:O	2:J:41:GLU:OE1	2.16	0.62
1:C:162:HIS:O	1:C:217:ARG:NH2	2.30	0.62
1:D:263:ARG:NH1	1:D:281:ASP:OD2	2.32	0.62
1:C:272:VAL:HG12	3:C:401:FTT:H112	1.81	0.62
1:A:199:GLY:O	1:A:217:ARG:NH1	2.34	0.61
1:E:35:GLN:NE2	5:E:529:HOH:O	2.33	0.61
1:B:256:ALA:HA	3:B:401:FTT:H51	1.83	0.60
1:A:95:GLN:OE1	1:A:153:ARG:NH1	2.35	0.60
3:A:401:FTT:H42	1:C:232:ASP:OD2	2.03	0.59
1:E:269:GLY:HA3	3:F:401:FTT:H71	1.86	0.58
1:B:232:ASP:OD2	3:C:401:FTT:H42	2.02	0.57
3:A:401:FTT:H71	1:C:269:GLY:HA3	1.87	0.56
1:B:314:ARG:CZ	2:I:36:SER:HB3	2.36	0.56
1:D:232:ASP:OD2	3:E:401:FTT:H52	2.06	0.55
3:B:402:FTT:O3	3:B:402:FTT:O1	2.21	0.54
2:H:24:ASN:HA	2:H:65:VAL:CG1	2.38	0.54
1:A:176:THR:OG1	1:A:210:GLY:O	2.26	0.54
1:A:232:ASP:OD2	3:B:401:FTT:H41	2.08	0.54

*Continued on next page...*

*Continued from previous page...*

Atom-1	Atom-2	Interatomic distance (Å)	Clash overlap (Å)
2:K:3:ILE:HG22	2:K:4:GLU:N	2.23	0.54
3:D:401:FTT:H71	1:F:269:GLY:HA3	1.90	0.54
3:E:401:FTT:C11	4:J:101:PNS:H382	2.35	0.53
4:L:101:PNS:H303	4:L:101:PNS:N36	2.23	0.53
1:E:30:SER:OG	1:E:33:SER:OG	2.27	0.52
2:K:20:GLU:OE1	2:K:20:GLU:N	2.39	0.52
1:B:121:ASN:ND2	1:C:121:ASN:OD1	2.44	0.51
1:E:30:SER:O	1:E:34:ALA:N	2.44	0.51
1:D:22:ASP:OD1	1:D:22:ASP:N	2.44	0.51
1:D:292:MET:HE3	1:F:306:PRO:HG3	1.92	0.51
2:H:15:LEU:HD21	2:H:32:LEU:HB3	1.93	0.51
1:E:183:PHE:O	3:E:402:FTT:O2	2.27	0.51
1:C:314:ARG:HE	2:G:36:SER:HB3	1.75	0.50
2:H:15:LEU:HD21	2:H:32:LEU:O	2.11	0.50
5:A:512:HOH:O	1:B:234:GLN:NE2	2.44	0.50
4:J:101:PNS:C31	4:J:101:PNS:O35	2.58	0.50
1:E:292:MET:HG3	4:J:101:PNS:H302	1.93	0.49
2:K:7:VAL:O	2:K:10:ILE:HG22	2.13	0.49
2:J:34:ALA:HB1	2:J:38:ASP:CB	2.42	0.49
3:A:401:FTT:H92	4:I:101:PNS:C39	2.43	0.49
2:H:35:ASP:O	2:H:37:LEU:N	2.45	0.49
1:A:200:ARG:NH2	1:A:222:ASP:OD2	2.45	0.49
1:D:64:ASP:OD1	1:D:64:ASP:N	2.46	0.49
2:K:3:ILE:HG22	2:K:4:GLU:H	1.76	0.49
1:F:145:ASN:O	1:F:147:LYS:NZ	2.45	0.49
1:A:125:GLU:HG3	1:A:126:SER:H	1.78	0.48
1:C:156:ALA:O	1:C:174:SER:OG	2.29	0.48
1:D:266:MET:HB3	3:E:402:FTT:H72	1.95	0.48
1:D:66:LEU:N	1:D:67:PRO:HD2	2.29	0.48
3:B:401:FTT:H112	4:G:101:PNS:H371	1.95	0.48
3:B:401:FTT:H22	4:G:101:PNS:S44	2.55	0.47
1:D:314:ARG:HB3	2:K:40:VAL:HG21	1.96	0.47
2:J:27:SER:O	2:J:32:LEU:HD12	2.15	0.47
1:D:307:LEU:HD21	1:E:301:TYR:HB3	1.97	0.47
3:A:401:FTT:H72	4:I:101:PNS:H422	1.97	0.47
2:K:11:ILE:HD12	2:K:42:LEU:HD11	1.97	0.46
3:B:402:FTT:H41	4:H:101:PNS:S44	2.55	0.46
1:C:293:ARG:NH2	2:H:38:ASP:OD1	2.48	0.46
1:F:254:ILE:CG2	3:F:401:FTT:H62	2.45	0.46
1:C:176:THR:OG1	1:C:210:GLY:O	2.33	0.46
1:C:273:ILE:HA	1:C:291:VAL:HB	1.98	0.45

*Continued on next page...*



*Continued from previous page...*

Atom-1	Atom-2	Interatomic distance (Å)	Clash overlap (Å)
1:E:312:VAL:HA	1:E:315:LYS:HE3	1.99	0.45
3:A:401:FTT:H112	4:I:101:PNS:C38	2.45	0.45
1:C:48:ARG:NH2	1:C:65:ASP:OD1	2.46	0.45
1:F:42:MET:HE3	1:F:47:TYR:HB2	1.99	0.45
1:D:323:ILE:HG22	1:E:316:THR:HG22	1.99	0.45
1:D:314:ARG:NE	2:K:36:SER:HB3	2.32	0.45
2:H:24:ASN:HA	2:H:65:VAL:HG13	1.99	0.45
1:B:199:GLY:O	1:B:217:ARG:NH1	2.47	0.44
1:D:248:ALA:HB1	3:E:402:FTT:H62	1.99	0.44
2:K:47:GLU:HG2	2:K:54:ILE:CD1	2.48	0.44
1:B:254:ILE:HG22	3:B:401:FTT:H82	2.00	0.44
1:F:66:LEU:N	1:F:67:PRO:HD2	2.33	0.43
4:L:101:PNS:C30	4:L:101:PNS:N36	2.81	0.43
1:D:125:GLU:HG3	1:D:126:SER:H	1.83	0.43
2:H:15:LEU:HD23	2:H:17:VAL:HG13	1.99	0.43
2:G:30:GLU:OE1	2:G:30:GLU:N	2.50	0.43
1:B:16:GLU:OE1	1:B:63:GLN:NE2	2.52	0.43
1:F:314:ARG:NH1	2:J:36:SER:O	2.52	0.42
1:D:303:SER:HB3	1:F:307:LEU:HA	2.01	0.42
2:J:19:GLN:O	2:J:22:VAL:HG12	2.19	0.42
1:D:207:VAL:HG11	1:D:225:ILE:HG21	2.02	0.42
2:H:62:ILE:O	2:H:62:ILE:CG1	2.67	0.42
2:J:24:ASN:HB3	2:J:66:GLN:HE21	1.85	0.42
3:C:401:FTT:H82	4:H:101:PNS:H422	2.00	0.42
1:C:314:ARG:HB3	2:G:40:VAL:HG21	2.02	0.42
1:A:293:ARG:NH2	2:I:37:LEU:HB3	2.35	0.42
1:C:292:MET:HG3	4:H:101:PNS:H302	2.01	0.42
2:J:36:SER:C	2:J:37:LEU:HD23	2.40	0.41
1:F:254:ILE:HG22	3:F:401:FTT:H62	2.00	0.41
1:A:66:LEU:N	1:A:67:PRO:CD	2.83	0.41
1:D:269:GLY:HA3	3:E:401:FTT:H91	2.02	0.41
1:D:40:THR:OG1	1:D:41:PHE:N	2.51	0.41
2:H:10:ILE:HD11	2:H:49:GLU:HG2	2.03	0.41
1:B:66:LEU:N	1:B:67:PRO:HD2	2.35	0.41
1:A:188:ASP:O	1:E:55:GLN:NE2	2.54	0.41
2:H:20:GLU:OE1	2:H:20:GLU:N	2.44	0.41
1:B:268:GLY:HA2	3:B:402:FTT:H92	2.03	0.41
1:C:254:ILE:HG22	3:C:401:FTT:H72	2.03	0.41
3:A:401:FTT:H111	1:C:287:GLY:HA3	2.02	0.41
1:C:272:VAL:CG1	3:C:401:FTT:H112	2.49	0.41
2:J:27:SER:OG	2:J:30:GLU:HB2	2.21	0.41

*Continued on next page...*

Continued from previous page...

Atom-1	Atom-2	Interatomic distance (Å)	Clash overlap (Å)
1:A:307:LEU:HD11	1:B:291:VAL:HG22	2.02	0.41
1:B:248:ALA:HB1	3:B:402:FTT:H51	2.03	0.40
1:E:200:ARG:NH2	1:E:222:ASP:OD2	2.51	0.40
1:E:238:ALA:HB1	3:E:401:FTT:H3	2.03	0.40
1:E:306:PRO:HG2	2:K:37:LEU:HD11	2.03	0.40
2:K:42:LEU:O	2:K:46:LEU:HD13	2.21	0.40
1:A:321:MET:CE	1:B:306:PRO:HD2	2.51	0.40
1:B:293:ARG:NH1	2:G:37:LEU:HB2	2.37	0.40
2:I:31:ASP:HB2	2:I:32:LEU:HD12	2.02	0.40
1:D:125:GLU:HG3	1:D:144:LYS:HG2	2.04	0.40
3:E:402:FTT:O1	3:E:402:FTT:O3	2.25	0.40
2:H:65:VAL:HG13	2:H:66:GLN:N	2.37	0.40

There are no symmetry-related clashes.

## 5.3 Torsion angles [i](#)

### 5.3.1 Protein backbone [i](#)

In the following table, the Percentiles column shows the percent Ramachandran outliers of the chain as a percentile score with respect to all X-ray entries followed by that with respect to entries of similar resolution.

The Analysed column shows the number of residues for which the backbone conformation was analysed, and the total number of residues.

Mol	Chain	Analysed	Favoured	Allowed	Outliers	Percentiles	
1	A	332/348 (95%)	317 (96%)	15 (4%)	0	100	100
1	B	331/348 (95%)	321 (97%)	10 (3%)	0	100	100
1	C	330/348 (95%)	314 (95%)	16 (5%)	0	100	100
1	D	329/348 (94%)	312 (95%)	17 (5%)	0	100	100
1	E	335/348 (96%)	324 (97%)	11 (3%)	0	100	100
1	F	329/348 (94%)	311 (94%)	18 (6%)	0	100	100
2	G	59/80 (74%)	57 (97%)	2 (3%)	0	100	100
2	H	70/80 (88%)	68 (97%)	1 (1%)	1 (1%)	11	36
2	I	43/80 (54%)	42 (98%)	0	1 (2%)	6	23
2	J	73/80 (91%)	70 (96%)	3 (4%)	0	100	100

Continued on next page...

Continued from previous page...

Mol	Chain	Analysed	Favoured	Allowed	Outliers	Percentiles	
2	K	67/80 (84%)	66 (98%)	1 (2%)	0	100	100
2	L	8/80 (10%)	8 (100%)	0	0	100	100
All	All	2306/2568 (90%)	2210 (96%)	94 (4%)	2 (0%)	51	82

All (2) Ramachandran outliers are listed below:

Mol	Chain	Res	Type
2	H	36	SER
2	I	51	ASP

### 5.3.2 Protein sidechains [i](#)

In the following table, the Percentiles column shows the percent sidechain outliers of the chain as a percentile score with respect to all X-ray entries followed by that with respect to entries of similar resolution.

The Analysed column shows the number of residues for which the sidechain conformation was analysed, and the total number of residues.

Mol	Chain	Analysed	Rotameric	Outliers	Percentiles	
1	A	262/275 (95%)	258 (98%)	4 (2%)	65	87
1	B	261/275 (95%)	256 (98%)	5 (2%)	57	84
1	C	261/275 (95%)	254 (97%)	7 (3%)	44	77
1	D	260/275 (94%)	254 (98%)	6 (2%)	50	80
1	E	265/275 (96%)	257 (97%)	8 (3%)	41	75
1	F	260/275 (94%)	258 (99%)	2 (1%)	81	94
2	G	56/69 (81%)	54 (96%)	2 (4%)	35	69
2	H	62/69 (90%)	58 (94%)	4 (6%)	17	45
2	I	43/69 (62%)	39 (91%)	4 (9%)	9	27
2	J	65/69 (94%)	64 (98%)	1 (2%)	65	87
2	K	60/69 (87%)	55 (92%)	5 (8%)	11	32
2	L	10/69 (14%)	10 (100%)	0	100	100
All	All	1865/2064 (90%)	1817 (97%)	48 (3%)	46	77

All (48) residues with a non-rotameric sidechain are listed below:

Mol	Chain	Res	Type
1	A	114	ASN
1	A	239	HIS
1	A	288	MET
1	A	293	ARG
1	B	4	ILE
1	B	11	GLN
1	B	32	GLN
1	B	239	HIS
1	B	329	ARG
1	C	22	ASP
1	C	42	MET
1	C	51	LEU
1	C	103	SER
1	C	239	HIS
1	C	288	MET
1	C	328	LYS
1	D	14	ASP
1	D	22	ASP
1	D	64	ASP
1	D	128	VAL
1	D	165	GLN
1	D	239	HIS
1	E	33	SER
1	E	36	THR
1	E	215	ILE
1	E	239	HIS
1	E	278	GLU
1	E	296	THR
1	E	330	LEU
1	E	333	LEU
1	F	103	SER
1	F	239	HIS
2	G	1	SER
2	G	46	LEU
2	H	36	SER
2	H	62	ILE
2	H	64	THR
2	H	73	ASN
2	I	6	ARG
2	I	32	LEU
2	I	36	SER
2	I	64	THR
2	J	39	THR

*Continued on next page...*

*Continued from previous page...*

Mol	Chain	Res	Type
2	K	4	GLU
2	K	43	VAL
2	K	46	LEU
2	K	50	PHE
2	K	64	THR

Some sidechains can be flipped to improve hydrogen bonding and reduce clashes. All (35) such sidechains are listed below:

Mol	Chain	Res	Type
1	A	12	GLN
1	A	50	HIS
1	A	133	ASN
1	A	173	GLN
1	B	63	GLN
1	B	133	ASN
1	B	173	GLN
1	B	234	GLN
1	B	308	GLN
1	C	12	GLN
1	C	187	ASN
1	C	322	ASN
1	D	12	GLN
1	D	55	GLN
1	D	173	GLN
1	D	308	GLN
1	D	310	ASN
1	E	12	GLN
1	E	133	ASN
1	E	173	GLN
1	E	310	ASN
1	F	115	ASN
1	F	133	ASN
1	F	173	GLN
1	F	308	GLN
2	H	19	GLN
2	H	24	ASN
2	H	73	ASN
2	I	14	GLN
2	J	14	GLN
2	J	24	ASN
2	J	66	GLN
2	J	73	ASN

*Continued on next page...*

*Continued from previous page...*

Mol	Chain	Res	Type
2	K	19	GLN
2	K	24	ASN

### 5.3.3 RNA [i](#)

There are no RNA molecules in this entry.

### 5.4 Non-standard residues in protein, DNA, RNA chains [i](#)

There are no non-standard protein/DNA/RNA residues in this entry.

### 5.5 Carbohydrates [i](#)

There are no carbohydrates in this entry.

### 5.6 Ligand geometry [i](#)

14 ligands are modelled in this entry.

In the following table, the Counts columns list the number of bonds (or angles) for which Mogul statistics could be retrieved, the number of bonds (or angles) that are observed in the model and the number of bonds (or angles) that are defined in the Chemical Component Dictionary. The Link column lists molecule types, if any, to which the group is linked. The Z score for a bond length (or angle) is the number of standard deviations the observed value is removed from the expected value. A bond length (or angle) with  $|Z| > 2$  is considered an outlier worth inspection. RMSZ is the root-mean-square of all Z scores of the bond lengths (or angles).

Mol	Type	Chain	Res	Link	Bond lengths			Bond angles		
					Counts	RMSZ	# Z  > 2	Counts	RMSZ	# Z  > 2
3	FTT	E	402	-	13,16,16	0.27	0	13,17,17	0.88	0
4	PNS	G	101	2	14,20,21	2.12	4 (28%)	18,26,29	1.70	3 (16%)
4	PNS	J	101	2	14,20,21	0.51	0	18,26,29	0.98	1 (5%)
4	PNS	L	101	2	14,20,21	2.13	3 (21%)	18,26,29	1.67	3 (16%)
4	PNS	H	101	2	14,20,21	2.13	4 (28%)	18,26,29	2.03	3 (16%)
4	PNS	K	101	2	14,20,21	2.11	4 (28%)	18,26,29	1.72	4 (22%)
3	FTT	B	402	-	13,16,16	0.32	0	13,17,17	0.90	0
3	FTT	D	401	-	13,16,16	0.22	0	13,17,17	0.96	0
3	FTT	C	401	-	13,16,16	0.23	0	13,17,17	0.96	0
3	FTT	F	401	-	13,16,16	0.25	0	13,17,17	0.89	0
3	FTT	E	401	-	13,16,16	0.26	0	13,17,17	0.88	0

Mol	Type	Chain	Res	Link	Bond lengths			Bond angles		
					Counts	RMSZ	# Z  > 2	Counts	RMSZ	# Z  > 2
3	FTT	B	401	-	13,16,16	0.23	0	13,17,17	0.94	0
3	FTT	A	401	-	13,16,16	0.20	0	13,17,17	0.96	0
4	PNS	I	101	2	14,20,21	0.46	0	18,26,29	0.98	1 (5%)

In the following table, the Chirals column lists the number of chiral outliers, the number of chiral centers analysed, the number of these observed in the model and the number defined in the Chemical Component Dictionary. Similar counts are reported in the Torsion and Rings columns. '-' means no outliers of that kind were identified.

Mol	Type	Chain	Res	Link	Chirals	Torsions	Rings
3	FTT	E	402	-	-	6/13/15/15	-
4	PNS	G	101	2	-	11/24/26/27	-
4	PNS	J	101	2	-	2/24/26/27	-
4	PNS	L	101	2	-	10/24/26/27	-
4	PNS	H	101	2	-	7/24/26/27	-
4	PNS	K	101	2	-	2/24/26/27	-
3	FTT	B	402	-	-	8/13/15/15	-
3	FTT	D	401	-	-	9/13/15/15	-
3	FTT	C	401	-	-	6/13/15/15	-
3	FTT	F	401	-	-	4/13/15/15	-
3	FTT	E	401	-	-	7/13/15/15	-
3	FTT	B	401	-	-	10/13/15/15	-
3	FTT	A	401	-	-	5/13/15/15	-
4	PNS	I	101	2	-	6/24/26/27	-

All (15) bond length outliers are listed below:

Mol	Chain	Res	Type	Atoms	Z	Observed(Å)	Ideal(Å)
4	L	101	PNS	C34-N36	4.81	1.44	1.33
4	G	101	PNS	C34-N36	4.76	1.44	1.33
4	L	101	PNS	C39-N41	4.74	1.44	1.33
4	H	101	PNS	C34-N36	4.73	1.43	1.33
4	K	101	PNS	C34-N36	4.71	1.43	1.33
4	G	101	PNS	C39-N41	4.51	1.43	1.33
4	H	101	PNS	C39-N41	4.48	1.43	1.33
4	K	101	PNS	C39-N41	4.46	1.43	1.33
4	G	101	PNS	O33-C32	-2.32	1.38	1.42
4	K	101	PNS	P24-O27	-2.32	1.56	1.62
4	G	101	PNS	P24-O27	-2.27	1.56	1.62

Continued on next page...

*Continued from previous page...*

Mol	Chain	Res	Type	Atoms	Z	Observed(Å)	Ideal(Å)
4	H	101	PNS	O33-C32	-2.25	1.38	1.42
4	H	101	PNS	P24-O27	-2.23	1.56	1.62
4	K	101	PNS	O33-C32	-2.15	1.38	1.42
4	L	101	PNS	P24-O27	-2.10	1.56	1.62

All (15) bond angle outliers are listed below:

Mol	Chain	Res	Type	Atoms	Z	Observed(°)	Ideal(°)
4	H	101	PNS	C38-C37-N36	5.38	122.77	111.90
4	K	101	PNS	C38-C37-N36	5.15	122.30	111.90
4	L	101	PNS	C38-C37-N36	4.64	121.27	111.90
4	H	101	PNS	C37-C38-C39	3.88	118.81	112.36
4	G	101	PNS	C38-C37-N36	3.62	119.19	111.90
4	H	101	PNS	C43-C42-N41	3.59	120.52	112.31
4	L	101	PNS	C37-C38-C39	3.56	118.28	112.36
4	I	101	PNS	C37-C38-C39	-2.75	107.77	112.36
4	J	101	PNS	C37-C38-C39	-2.70	107.86	112.36
4	K	101	PNS	C37-C38-C39	2.58	116.66	112.36
4	G	101	PNS	C37-C38-C39	2.51	116.53	112.36
4	K	101	PNS	O35-C34-N36	-2.38	117.88	122.99
4	K	101	PNS	C32-C34-N36	2.32	121.19	116.58
4	G	101	PNS	C30-C29-C32	2.08	112.42	108.82
4	L	101	PNS	C43-C42-N41	2.03	116.94	112.31

There are no chirality outliers.

All (93) torsion outliers are listed below:

Mol	Chain	Res	Type	Atoms
4	G	101	PNS	O27-C28-C29-C30
4	G	101	PNS	O27-C28-C29-C31
4	G	101	PNS	O27-C28-C29-C32
4	G	101	PNS	C28-C29-C32-O33
4	G	101	PNS	C28-C29-C32-C34
4	G	101	PNS	C30-C29-C32-O33
4	G	101	PNS	C30-C29-C32-C34
4	G	101	PNS	C31-C29-C32-O33
4	G	101	PNS	C31-C29-C32-C34
4	G	101	PNS	N36-C37-C38-C39
4	G	101	PNS	N41-C42-C43-S44
4	L	101	PNS	C29-C32-C34-O35
4	L	101	PNS	C29-C32-C34-N36
4	L	101	PNS	O33-C32-C34-N36

*Continued on next page...*



*Continued from previous page...*

Mol	Chain	Res	Type	Atoms
4	L	101	PNS	N41-C42-C43-S44
4	H	101	PNS	O27-C28-C29-C30
4	H	101	PNS	O27-C28-C29-C31
4	H	101	PNS	O27-C28-C29-C32
4	H	101	PNS	N41-C42-C43-S44
3	B	402	FTT	C1-C2-C3-C4
3	B	402	FTT	C1-C2-C3-O3
3	D	401	FTT	C1-C2-C3-C4
3	D	401	FTT	C1-C2-C3-O3
3	C	401	FTT	C1-C2-C3-O3
3	B	401	FTT	C1-C2-C3-C4
3	B	401	FTT	C1-C2-C3-O3
3	B	401	FTT	C2-C3-C4-C5
3	B	401	FTT	O3-C3-C4-C5
3	A	401	FTT	C1-C2-C3-C4
3	A	401	FTT	C1-C2-C3-O3
4	H	101	PNS	C38-C37-N36-C34
4	L	101	PNS	C38-C37-N36-C34
4	I	101	PNS	C38-C37-N36-C34
3	E	402	FTT	O3-C3-C4-C5
3	B	402	FTT	C5-C6-C7-C8
3	B	401	FTT	C5-C6-C7-C8
3	D	401	FTT	C9-C10-C11-C12
3	E	402	FTT	C7-C8-C9-C10
3	A	401	FTT	C10-C11-C12-C13
3	A	401	FTT	C5-C6-C7-C8
3	F	401	FTT	C10-C11-C12-C13
3	D	401	FTT	C5-C6-C7-C8
3	B	402	FTT	C6-C7-C8-C9
3	E	402	FTT	C11-C10-C9-C8
3	E	401	FTT	O3-C3-C4-C5
3	D	401	FTT	C11-C10-C9-C8
3	B	401	FTT	C4-C5-C6-C7
3	E	401	FTT	C9-C10-C11-C12
3	B	402	FTT	C7-C8-C9-C10
3	E	401	FTT	C10-C11-C12-C13
4	L	101	PNS	O33-C32-C34-O35
3	F	401	FTT	O3-C3-C4-C5
3	B	401	FTT	C11-C12-C13-C14
3	D	401	FTT	C6-C7-C8-C9
3	E	401	FTT	C2-C3-C4-C5
3	B	401	FTT	C7-C8-C9-C10

*Continued on next page...*

*Continued from previous page...*

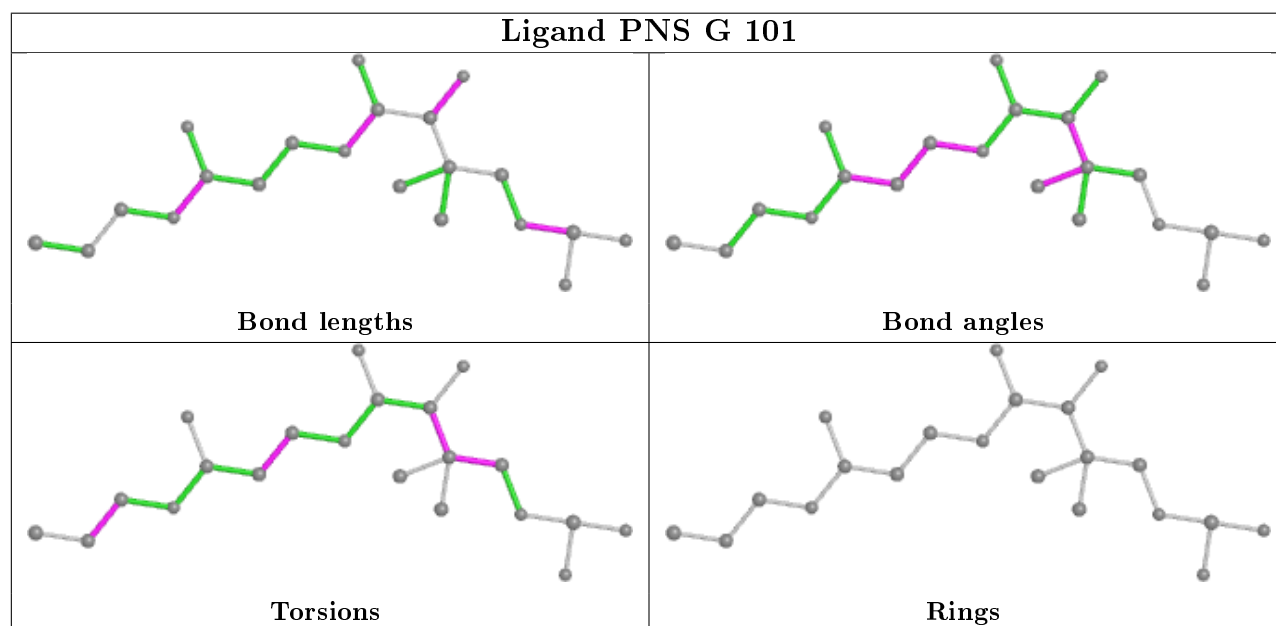
Mol	Chain	Res	Type	Atoms
3	E	402	FTT	C10-C11-C12-C13
3	B	401	FTT	C6-C7-C8-C9
4	K	101	PNS	C37-C38-C39-O40
4	K	101	PNS	C37-C38-C39-N41
3	B	402	FTT	C10-C11-C12-C13
3	E	402	FTT	C2-C3-C4-C5
4	L	101	PNS	C37-C38-C39-O40
4	L	101	PNS	C37-C38-C39-N41
3	E	401	FTT	C11-C12-C13-C14
4	I	101	PNS	O27-C28-C29-C32
3	B	401	FTT	C9-C10-C11-C12
3	E	402	FTT	C5-C6-C7-C8
3	F	401	FTT	C11-C12-C13-C14
4	I	101	PNS	O27-C28-C29-C31
3	B	402	FTT	C9-C10-C11-C12
3	C	401	FTT	C1-C2-C3-C4
3	D	401	FTT	C10-C11-C12-C13
3	C	401	FTT	C2-C3-C4-C5
4	H	101	PNS	C37-C38-C39-O40
4	L	101	PNS	N36-C37-C38-C39
4	J	101	PNS	C29-C32-C34-O35
3	B	402	FTT	C3-C4-C5-C6
4	I	101	PNS	C37-C38-C39-O40
4	I	101	PNS	O27-C28-C29-C30
4	J	101	PNS	C29-C32-C34-N36
3	D	401	FTT	C3-C4-C5-C6
3	F	401	FTT	C3-C4-C5-C6
4	H	101	PNS	C37-C38-C39-N41
3	C	401	FTT	O3-C3-C4-C5
3	E	401	FTT	C3-C4-C5-C6
4	I	101	PNS	C37-C38-C39-N41
3	E	401	FTT	C4-C5-C6-C7
3	C	401	FTT	C3-C4-C5-C6
3	C	401	FTT	C6-C7-C8-C9
3	D	401	FTT	O3-C3-C4-C5
3	A	401	FTT	C4-C5-C6-C7
4	L	101	PNS	O27-C28-C29-C31

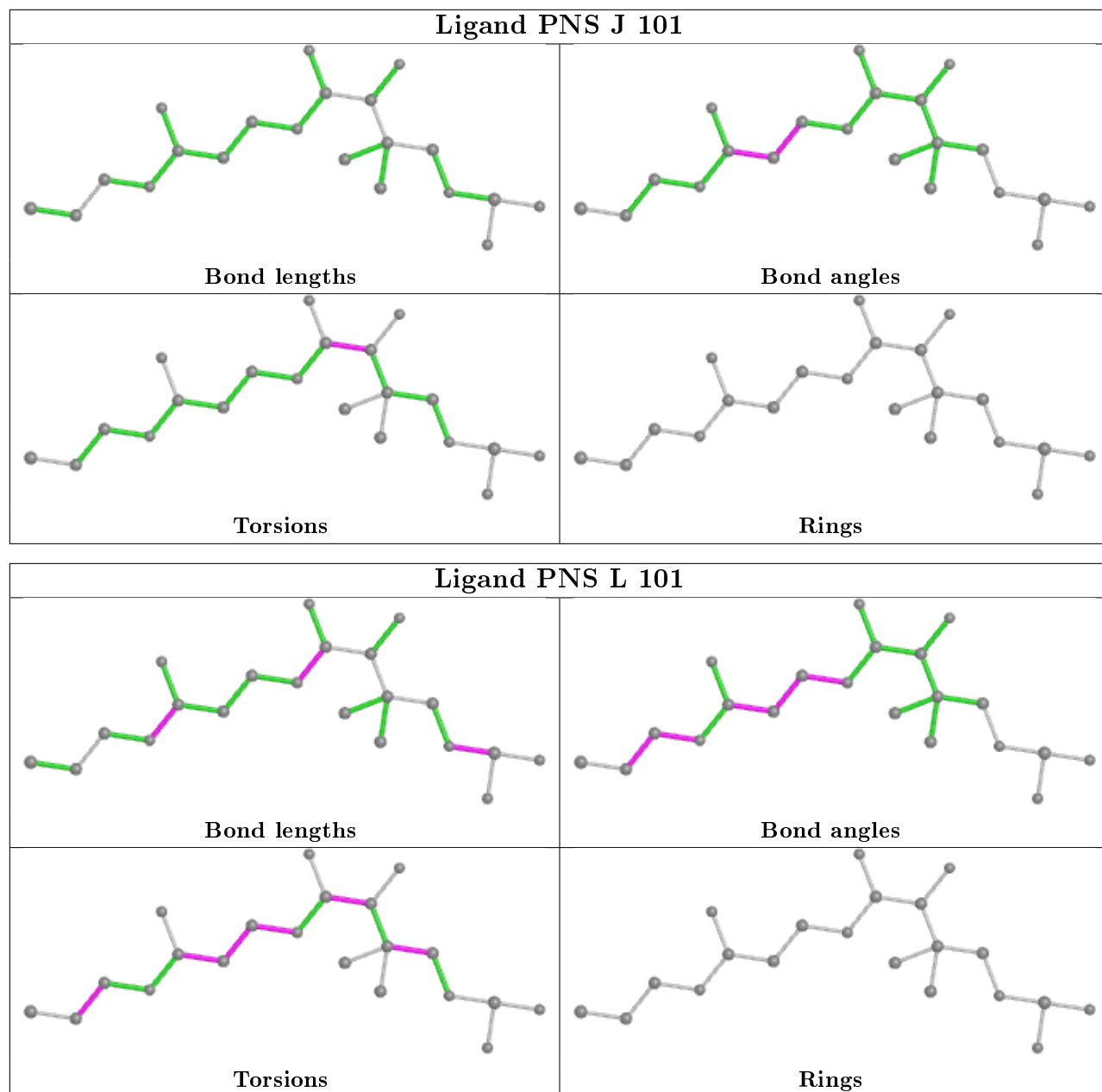
There are no ring outliers.

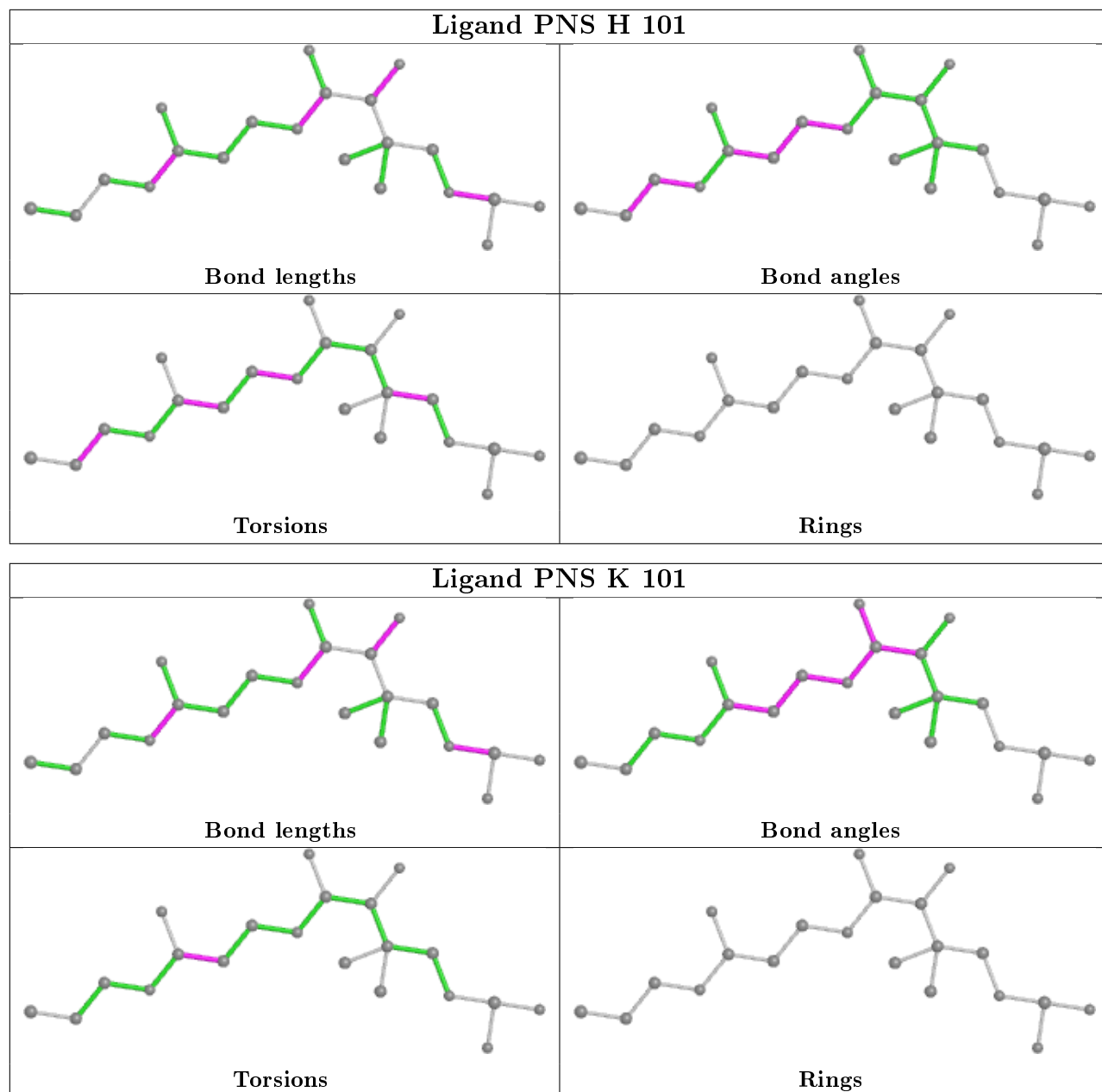
13 monomers are involved in 50 short contacts:

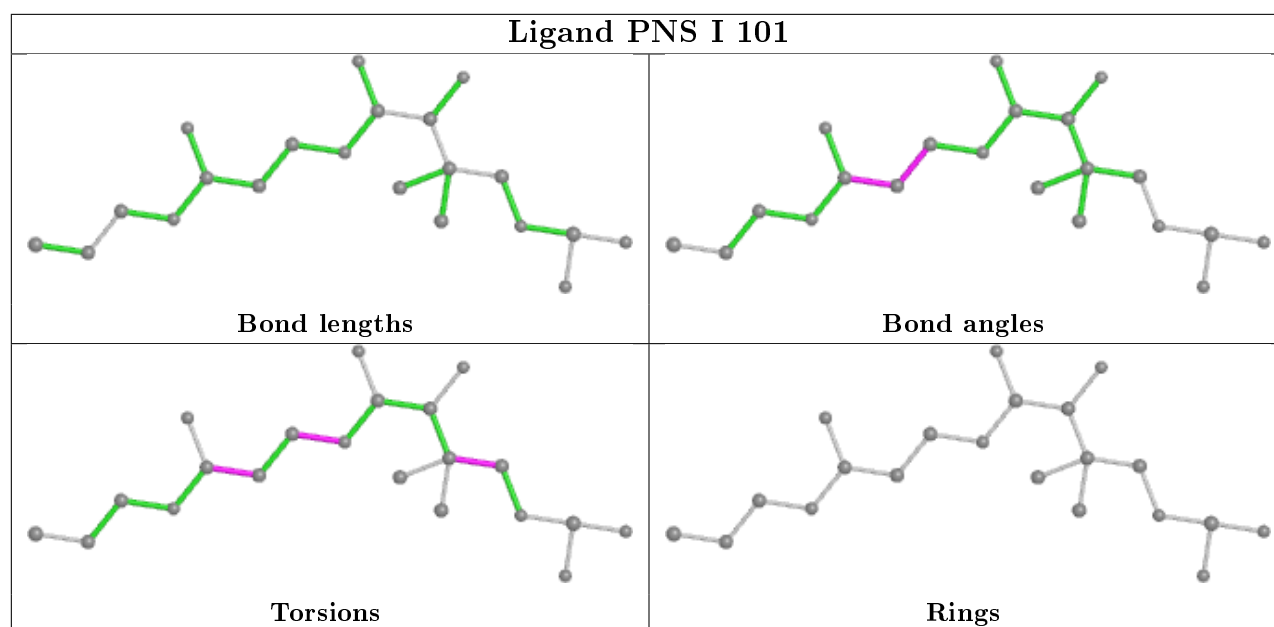
Mol	Chain	Res	Type	Clashes	Symm-Clashes
3	E	402	FTT	5	0
4	G	101	PNS	2	0
4	J	101	PNS	6	0
4	L	101	PNS	3	0
4	H	101	PNS	3	0
3	B	402	FTT	7	0
3	D	401	FTT	3	0
3	C	401	FTT	9	0
3	F	401	FTT	3	0
3	E	401	FTT	6	0
3	B	401	FTT	5	0
3	A	401	FTT	6	0
4	I	101	PNS	3	0

The following is a two-dimensional graphical depiction of Mogul quality analysis of bond lengths, bond angles, torsion angles, and ring geometry for all instances of the Ligand of Interest. In addition, ligands with molecular weight > 250 and outliers as shown on the validation Tables will also be included. For torsion angles, if less than 5% of the Mogul distribution of torsion angles is within 10 degrees of the torsion angle in question, then that torsion angle is considered an outlier. Any bond that is central to one or more torsion angles identified as an outlier by Mogul will be highlighted in the graph. For rings, the root-mean-square deviation (RMSD) between the ring in question and similar rings identified by Mogul is calculated over all ring torsion angles. If the average RMSD is greater than 60 degrees and the minimal RMSD between the ring in question and any Mogul-identified rings is also greater than 60 degrees, then that ring is considered an outlier. The outliers are highlighted in purple. The color gray indicates Mogul did not find sufficient equivalents in the CSD to analyse the geometry.









## 5.7 Other polymers [i](#)

There are no such residues in this entry.

## 5.8 Polymer linkage issues [i](#)

There are no chain breaks in this entry.

## 6 Fit of model and data i

### 6.1 Protein, DNA and RNA chains i

In the following table, the column labelled ‘#RSRZ> 2’ contains the number (and percentage) of RSRZ outliers, followed by percent RSRZ outliers for the chain as percentile scores relative to all X-ray entries and entries of similar resolution. The OWAB column contains the minimum, median, 95<sup>th</sup> percentile and maximum values of the occupancy-weighted average B-factor per residue. The column labelled ‘Q< 0.9’ lists the number of (and percentage) of residues with an average occupancy less than 0.9.

Mol	Chain	Analysed	<RSRZ>	#RSRZ>2	OWAB(Å <sup>2</sup> )	Q<0.9
1	A	334/348 (95%)	-0.31	2 (0%) 89 89	18, 31, 49, 85	0
1	B	333/348 (95%)	-0.13	2 (0%) 89 89	19, 36, 64, 80	0
1	C	332/348 (95%)	-0.21	2 (0%) 89 89	18, 32, 66, 79	0
1	D	331/348 (95%)	0.07	10 (3%) 50 45	26, 44, 84, 98	0
1	E	337/348 (96%)	-0.09	6 (1%) 68 67	21, 35, 65, 113	0
1	F	331/348 (95%)	-0.27	0 100 100	21, 34, 58, 99	0
2	G	63/80 (78%)	1.08	12 (19%) 1 0	56, 73, 87, 93	0
2	H	72/80 (90%)	0.91	11 (15%) 2 1	44, 70, 89, 93	0
2	I	49/80 (61%)	1.54	19 (38%) 0 0	59, 84, 102, 106	0
2	J	75/80 (93%)	1.20	12 (16%) 1 1	64, 76, 88, 95	0
2	K	69/80 (86%)	1.29	20 (28%) 0 0	67, 87, 99, 101	0
2	L	10/80 (12%)	0.62	0 100 100	73, 77, 81, 81	0
All	All	2336/2568 (90%)	0.04	96 (4%) 37 32	18, 38, 86, 113	0

All (96) RSRZ outliers are listed below:

Mol	Chain	Res	Type	RSRZ
2	I	71	TYR	4.7
1	E	335	ARG	4.3
2	I	7	VAL	4.3
2	I	69	ILE	4.2
1	D	63	GLN	4.2
2	J	20	GLU	4.0
2	I	70	ASP	3.9
2	H	12	GLY	3.9
2	G	29	VAL	3.8
2	G	28	PHE	3.6
2	I	72	ILE	3.5

*Continued on next page...*

*Continued from previous page...*

<b>Mol</b>	<b>Chain</b>	<b>Res</b>	<b>Type</b>	<b>RSRZ</b>
2	J	72	ILE	3.3
2	K	20	GLU	3.3
2	K	59	ALA	3.3
2	K	57	GLU	3.2
2	J	7	VAL	3.2
2	H	49	GLU	3.2
2	I	73	ASN	3.2
2	K	17	VAL	3.1
2	I	9	LYS	3.1
1	D	49	GLU	3.0
2	H	22	VAL	3.0
2	J	18	LYS	2.9
2	J	24	ASN	2.9
2	I	52	THR	2.9
2	K	8	LYS	2.9
2	I	8	LYS	2.9
1	D	332	SER	2.9
2	I	66	GLN	2.9
1	D	90	LEU	2.9
1	E	333	LEU	2.9
2	G	11	ILE	2.8
2	J	17	VAL	2.8
1	D	73	ALA	2.8
2	K	67	ALA	2.8
2	J	23	THR	2.8
1	A	331	LYS	2.7
2	I	6	ARG	2.7
2	G	32	LEU	2.7
1	E	337	VAL	2.6
2	J	25	ASN	2.6
2	G	27	SER	2.6
2	G	64	THR	2.6
2	K	60	GLU	2.6
2	I	45	ALA	2.6
2	K	3	ILE	2.6
2	G	63	THR	2.5
1	D	66	LEU	2.5
2	I	27	SER	2.5
1	D	48	ARG	2.5
2	K	69	ILE	2.5
2	K	11	ILE	2.5
2	G	31	ASP	2.5

*Continued on next page...*



*Continued from previous page...*

<b>Mol</b>	<b>Chain</b>	<b>Res</b>	<b>Type</b>	<b>RSRZ</b>
2	H	72	ILE	2.5
1	B	333	LEU	2.4
1	D	4	ILE	2.4
2	J	12	GLY	2.4
2	G	8	LYS	2.4
2	I	62	ILE	2.4
1	D	50	HIS	2.4
2	K	52	THR	2.3
2	I	50	PHE	2.3
2	K	7	VAL	2.3
2	G	57	GLU	2.3
2	K	61	LYS	2.3
2	H	17	VAL	2.3
2	I	63	THR	2.3
2	K	63	THR	2.3
1	B	63	GLN	2.2
2	I	49	GLU	2.2
2	H	25	ASN	2.2
1	C	333	LEU	2.2
2	I	11	ILE	2.2
2	H	7	VAL	2.2
2	K	66	GLN	2.2
2	K	51	ASP	2.2
2	H	3	ILE	2.2
1	A	0	HIS	2.2
1	C	45	PRO	2.2
2	H	21	GLU	2.1
1	E	338	ASN	2.1
1	E	336	LYS	2.1
2	J	0	MET	2.1
2	H	57	GLU	2.1
2	H	9	LYS	2.1
1	D	57	SER	2.1
2	J	58	GLU	2.1
2	J	65	VAL	2.1
2	I	33	GLY	2.0
2	K	23	THR	2.0
2	G	42	LEU	2.0
2	G	33	GLY	2.0
1	E	330	LEU	2.0
2	K	10	ILE	2.0
2	K	56	ASP	2.0

*Continued on next page...*

*Continued from previous page...*

Mol	Chain	Res	Type	RSRZ
2	K	43	VAL	2.0

## 6.2 Non-standard residues in protein, DNA, RNA chains [i](#)

There are no non-standard protein/DNA/RNA residues in this entry.

## 6.3 Carbohydrates [i](#)

There are no carbohydrates in this entry.

## 6.4 Ligands [i](#)

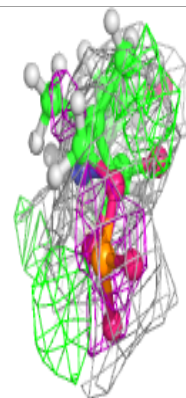
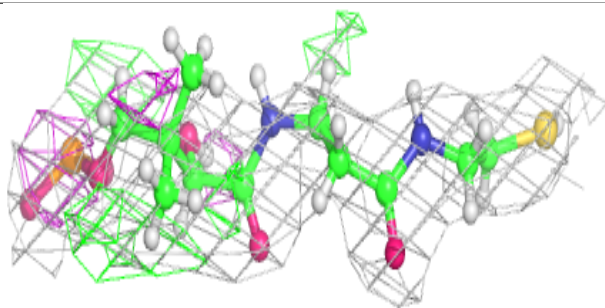
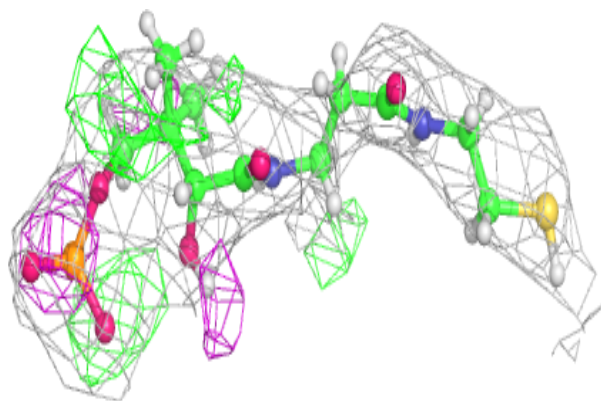
In the following table, the Atoms column lists the number of modelled atoms in the group and the number defined in the chemical component dictionary. The B-factors column lists the minimum, median, 95<sup>th</sup> percentile and maximum values of B factors of atoms in the group. The column labelled 'Q< 0.9' lists the number of atoms with occupancy less than 0.9.

Mol	Type	Chain	Res	Atoms	RSCC	RSR	B-factors(Å <sup>2</sup> )	Q<0.9
3	FTT	B	402	17/17	0.83	0.28	37,44,47,47	0
4	PNS	L	101	21/22	0.86	0.22	23,41,46,65	0
3	FTT	E	402	17/17	0.89	0.24	35,42,44,44	29
3	FTT	F	401	17/17	0.89	0.25	35,42,44,44	0
4	PNS	G	101	21/22	0.91	0.19	28,41,48,58	0
3	FTT	E	401	17/17	0.91	0.21	34,41,45,49	0
3	FTT	D	401	17/17	0.92	0.18	36,43,45,46	0
4	PNS	I	101	21/22	0.92	0.16	32,38,46,47	0
3	FTT	C	401	17/17	0.93	0.21	32,41,43,43	0
3	FTT	B	401	17/17	0.93	0.20	34,41,44,45	0
4	PNS	H	101	21/22	0.93	0.17	33,42,46,58	0
4	PNS	K	101	21/22	0.94	0.18	32,42,44,61	0
3	FTT	A	401	17/17	0.94	0.23	31,38,42,44	0
4	PNS	J	101	21/22	0.94	0.15	22,41,44,61	0

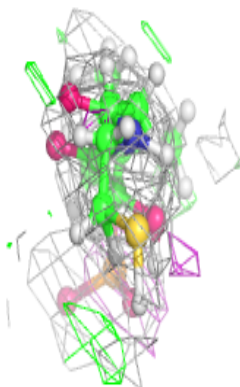
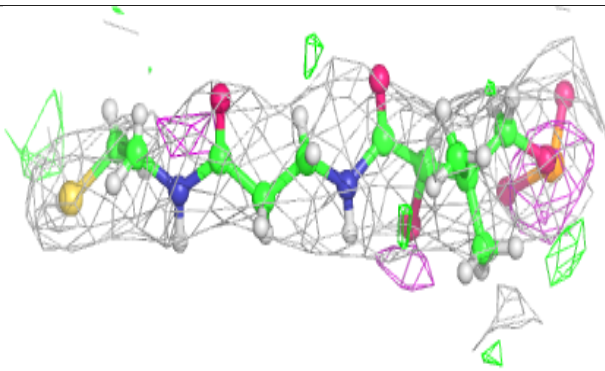
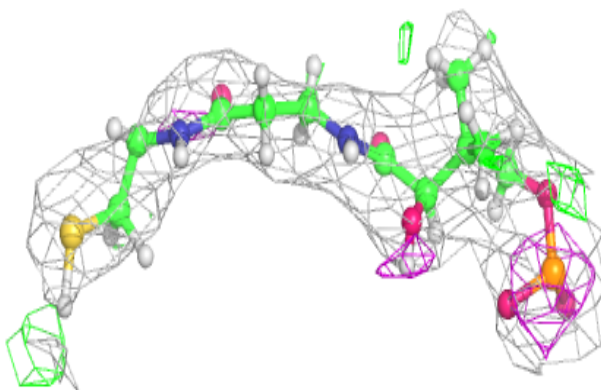
The following is a graphical depiction of the model fit to experimental electron density of all instances of the Ligand of Interest. In addition, ligands with molecular weight > 250 and outliers as shown on the geometry validation Tables will also be included. Each fit is shown from different orientation to approximate a three-dimensional view.

**Electron density around PNS L 101:**

$2mF_o-DF_c$  (at 0.7 rmsd) in gray  
 $mF_o-DF_c$  (at 3 rmsd) in purple (negative)  
and green (positive)

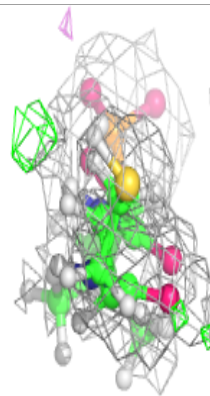
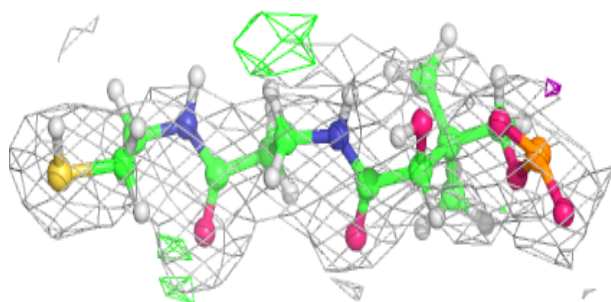
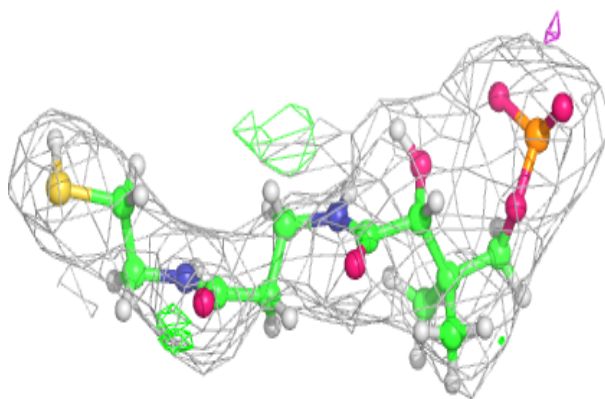
**Electron density around PNS G 101:**

$2mF_o-DF_c$  (at 0.7 rmsd) in gray  
 $mF_o-DF_c$  (at 3 rmsd) in purple (negative)  
and green (positive)

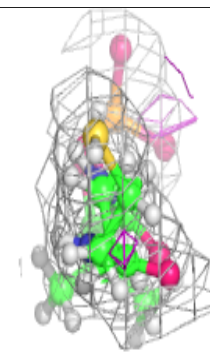
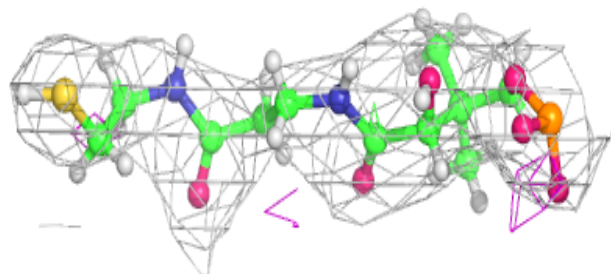
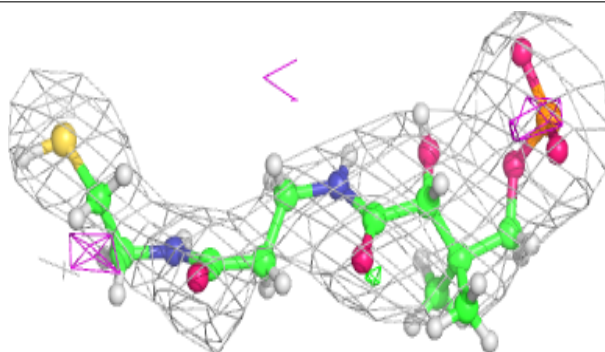


**Electron density around PNS I 101:**

$2mF_o-DF_c$  (at 0.7 rmsd) in gray  
 $mF_o-DF_c$  (at 3 rmsd) in purple (negative)  
and green (positive)

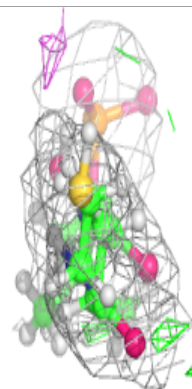
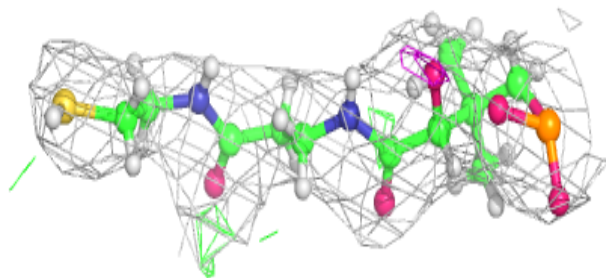
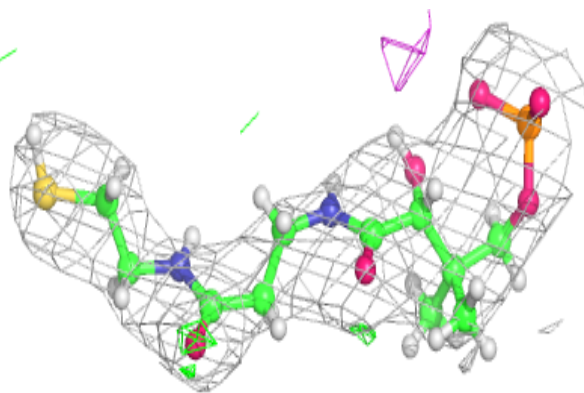
**Electron density around PNS H 101:**

$2mF_o-DF_c$  (at 0.7 rmsd) in gray  
 $mF_o-DF_c$  (at 3 rmsd) in purple (negative)  
and green (positive)

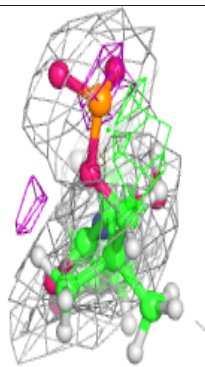
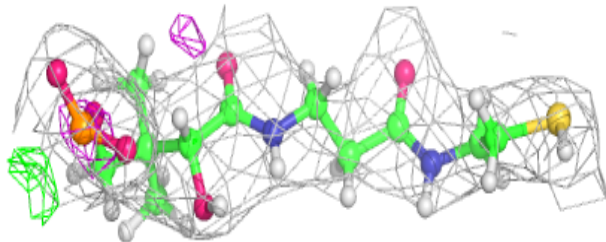
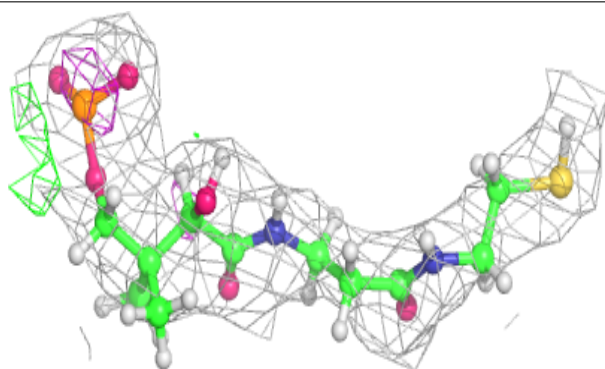


**Electron density around PNS K 101:**

$2mF_o-DF_c$  (at 0.7 rmsd) in gray  
 $mF_o-DF_c$  (at 3 rmsd) in purple (negative)  
and green (positive)

**Electron density around PNS J 101:**

$2mF_o-DF_c$  (at 0.7 rmsd) in gray  
 $mF_o-DF_c$  (at 3 rmsd) in purple (negative)  
and green (positive)



## 6.5 Other polymers

There are no such residues in this entry.