



Full wwPDB X-ray Structure Validation Report ⓘ

Jun 22, 2024 – 02:38 PM EDT

PDB ID : 6IH5
Title : Crystal structure of Phosphite Dehydrogenase mutant I151R/P176E from *Ralstonia* sp. 4506 in complex with non-natural cofactor Nicotinamide Cytosine dinucleotide
Authors : Song, X.; Feng, Y.; Liu, Y.; Zhao, Z.
Deposited on : 2018-09-28
Resolution : 2.47 Å(reported)

This is a Full wwPDB X-ray Structure Validation Report for a publicly released PDB entry.

We welcome your comments at validation@mail.wwpdb.org

A user guide is available at

<https://www.wwpdb.org/validation/2017/XrayValidationReportHelp>

with specific help available everywhere you see the ⓘ symbol.

The types of validation reports are described at

<http://www.wwpdb.org/validation/2017/FAQs#types>.

The following versions of software and data (see [references ⓘ](#)) were used in the production of this report:

MolProbity : 4.02b-467
Mogul : 2022.3.0, CSD as543be (2022)
Xtriage (Phenix) : 1.20.1
EDS : 2.37.1
buster-report : 1.1.7 (2018)
Percentile statistics : 20191225.v01 (using entries in the PDB archive December 25th 2019)
Refmac : 5.8.0158
CCP4 : 7.0.044 (Gargrove)
Ideal geometry (proteins) : Engh & Huber (2001)
Ideal geometry (DNA, RNA) : Parkinson et al. (1996)
Validation Pipeline (wwPDB-VP) : 2.37.1

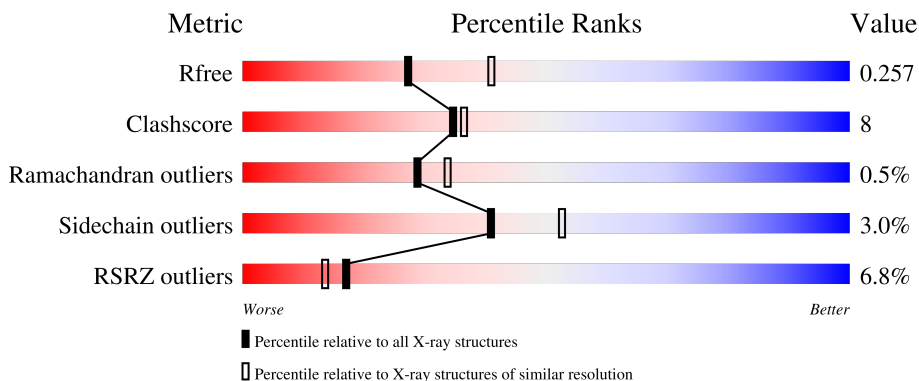
1 Overall quality at a glance

The following experimental techniques were used to determine the structure:

X-RAY DIFFRACTION

The reported resolution of this entry is 2.47 Å.

Percentile scores (ranging between 0-100) for global validation metrics of the entry are shown in the following graphic. The table shows the number of entries on which the scores are based.



Metric	Whole archive (#Entries)	Similar resolution (#Entries, resolution range(Å))
R_{free}	130704	1544 (2.48-2.44)
Clashscore	141614	1613 (2.48-2.44)
Ramachandran outliers	138981	1598 (2.48-2.44)
Sidechain outliers	138945	1598 (2.48-2.44)
RSRZ outliers	127900	1523 (2.48-2.44)

The table below summarises the geometric issues observed across the polymeric chains and their fit to the electron density. The red, orange, yellow and green segments of the lower bar indicate the fraction of residues that contain outliers for ≥ 3 , 2, 1 and 0 types of geometric quality criteria respectively. A grey segment represents the fraction of residues that are not modelled. The numeric value for each fraction is indicated below the corresponding segment, with a dot representing fractions $\leq 5\%$. The upper red bar (where present) indicates the fraction of residues that have poor fit to the electron density. The numeric value is given above the bar.

Mol	Chain	Length	Quality of chain
1	A	338	 7% 80% 16% ..
1	B	338	 7% 77% 19% ..

2 Entry composition

There are 3 unique types of molecules in this entry. The entry contains 5212 atoms, of which 0 are hydrogens and 0 are deuteriums.

In the tables below, the ZeroOcc column contains the number of atoms modelled with zero occupancy, the AltConf column contains the number of residues with at least one atom in alternate conformation and the Trace column contains the number of residues modelled with at most 2 atoms.

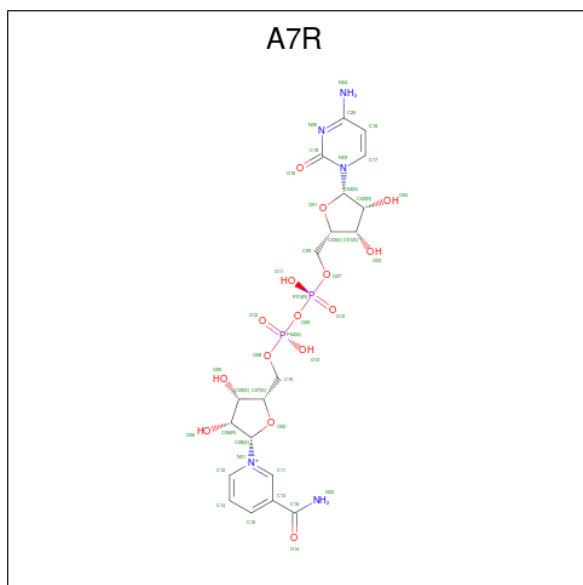
- Molecule 1 is a protein called Phosphite dehydrogenase.

Mol	Chain	Residues	Atoms					ZeroOcc	AltConf	Trace
			Total	C	N	O	S			
1	A	329	2526	1605	438	467	16	0	0	0
1	B	329	2526	1605	438	467	16	0	0	0

There are 8 discrepancies between the modelled and reference sequences:

Chain	Residue	Modelled	Actual	Comment	Reference
A	151	ARG	ILE	engineered mutation	UNP G4XDR8
A	176	GLU	PRO	engineered mutation	UNP G4XDR8
A	337	LEU	-	expression tag	UNP G4XDR8
A	338	GLU	-	expression tag	UNP G4XDR8
B	151	ARG	ILE	engineered mutation	UNP G4XDR8
B	176	GLU	PRO	engineered mutation	UNP G4XDR8
B	337	LEU	-	expression tag	UNP G4XDR8
B	338	GLU	-	expression tag	UNP G4XDR8

- Molecule 2 is [[(2S,3S,4R,5S)-5-(3-aminocarbonylpyridin-1-ium-1-yl)-3,4-bis(oxidanyl)oxolan-2-yl]methoxy-oxidanyl-phosphoryl] [(2S,3S,4R,5S)-5-(4-azanyl-2-oxidanylidene-pyrimidin-1-yl)-3,4-bis(oxidanyl)oxolan-2-yl]methyl hydrogen phosphate (three-letter code: A7R) (formula: C₂₀H₂₈N₅O₁₅P₂).



Mol	Chain	Residues	Atoms					ZeroOcc	AltConf
			Total	C	N	O	P		
2	B	1	42	20	5	15	2	0	0

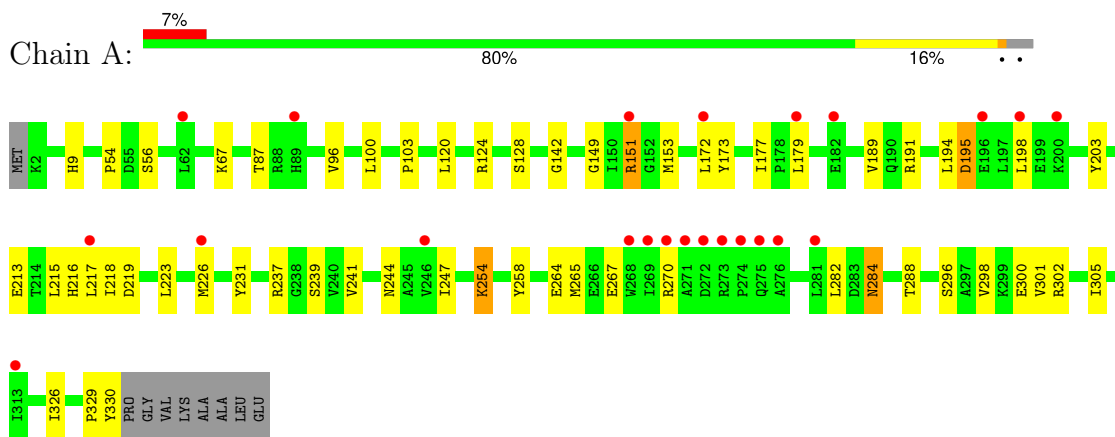
- Molecule 3 is water.

Mol	Chain	Residues	Atoms	ZeroOcc	AltConf
3	A	53	Total O 53 53	0	0
3	B	65	Total O 65 65	0	0

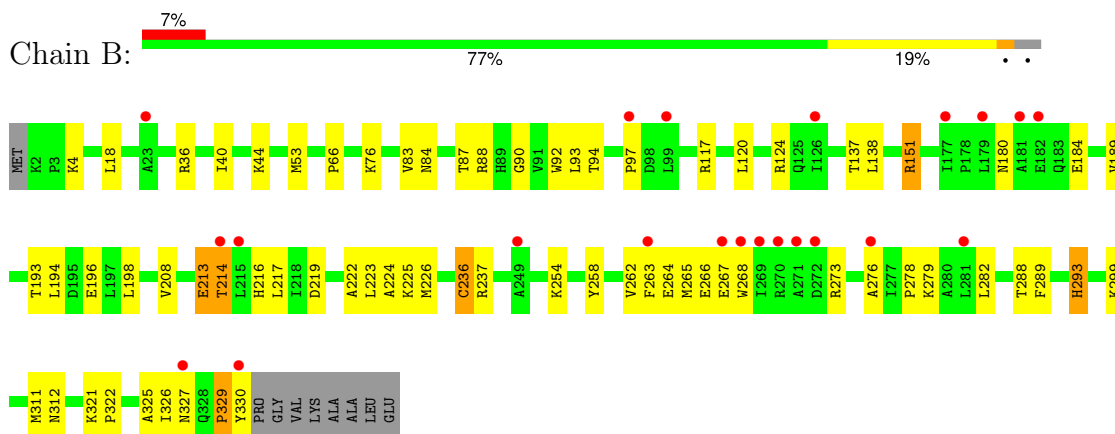
3 Residue-property plots [i](#)

These plots are drawn for all protein, RNA, DNA and oligosaccharide chains in the entry. The first graphic for a chain summarises the proportions of the various outlier classes displayed in the second graphic. The second graphic shows the sequence view annotated by issues in geometry and electron density. Residues are color-coded according to the number of geometric quality criteria for which they contain at least one outlier: green = 0, yellow = 1, orange = 2 and red = 3 or more. A red dot above a residue indicates a poor fit to the electron density ($RSRZ > 2$). Stretches of 2 or more consecutive residues without any outlier are shown as a green connector. Residues present in the sample, but not in the model, are shown in grey.

- Molecule 1: Phosphite dehydrogenase



- Molecule 1: Phosphite dehydrogenase



4 Data and refinement statistics i

Property	Value	Source
Space group	P 1 21 1	Depositor
Cell constants a, b, c, α , β , γ	59.66Å 98.52Å 62.01Å 90.00° 102.35° 90.00°	Depositor
Resolution (Å)	38.22 – 2.47 42.69 – 2.47	Depositor EDS
% Data completeness (in resolution range)	99.5 (38.22-2.47) 99.6 (42.69-2.47)	Depositor EDS
R_{merge}	0.13	Depositor
R_{sym}	(Not available)	Depositor
$\langle I/\sigma(I) \rangle$ ¹	2.66 (at 2.48Å)	Xtrriage
Refinement program	PHENIX (1.13_2998: ???)	Depositor
R, R_{free}	0.195 , 0.255 0.198 , 0.257	Depositor DCC
R_{free} test set	1339 reflections (5.32%)	wwPDB-VP
Wilson B-factor (Å ²)	43.0	Xtrriage
Anisotropy	0.641	Xtrriage
Bulk solvent k_{sol} (e/Å ³), B_{sol} (Å ²)	0.31 , 42.5	EDS
L-test for twinning ²	$\langle L \rangle = 0.48$, $\langle L^2 \rangle = 0.31$	Xtrriage
Estimated twinning fraction	0.026 for l,-k,h	Xtrriage
F_o, F_c correlation	0.93	EDS
Total number of atoms	5212	wwPDB-VP
Average B, all atoms (Å ²)	49.0	wwPDB-VP

Xtrriage's analysis on translational NCS is as follows: *The largest off-origin peak in the Patterson function is 7.08% of the height of the origin peak. No significant pseudotranslation is detected.*

¹Intensities estimated from amplitudes.

²Theoretical values of $\langle |L| \rangle$, $\langle L^2 \rangle$ for acentric reflections are 0.5, 0.333 respectively for untwinned datasets, and 0.375, 0.2 for perfectly twinned datasets.

5 Model quality [i](#)

5.1 Standard geometry [i](#)

Bond lengths and bond angles in the following residue types are not validated in this section: A7R

The Z score for a bond length (or angle) is the number of standard deviations the observed value is removed from the expected value. A bond length (or angle) with $|Z| > 5$ is considered an outlier worth inspection. RMSZ is the root-mean-square of all Z scores of the bond lengths (or angles).

Mol	Chain	Bond lengths		Bond angles	
		RMSZ	# Z >5	RMSZ	# Z >5
1	A	0.40	0/2575	0.59	0/3499
1	B	0.39	0/2575	0.58	0/3499
All	All	0.40	0/5150	0.59	0/6998

Chiral center outliers are detected by calculating the chiral volume of a chiral center and verifying if the center is modelled as a planar moiety or with the opposite hand. A planarity outlier is detected by checking planarity of atoms in a peptide group, atoms in a mainchain group or atoms of a sidechain that are expected to be planar.

Mol	Chain	#Chirality outliers	#Planarity outliers
1	B	0	2

There are no bond length outliers.

There are no bond angle outliers.

There are no chirality outliers.

All (2) planarity outliers are listed below:

Mol	Chain	Res	Type	Group
1	B	213	GLU	Peptide
1	B	214	THR	Peptide

5.2 Too-close contacts [i](#)

In the following table, the Non-H and H(model) columns list the number of non-hydrogen atoms and hydrogen atoms in the chain respectively. The H(added) column lists the number of hydrogen atoms added and optimized by MolProbity. The Clashes column lists the number of clashes within the asymmetric unit, whereas Symm-Clashes lists symmetry-related clashes.

Mol	Chain	Non-H	H(model)	H(added)	Clashes	Symm-Clashes
1	A	2526	0	2563	38	0
1	B	2526	0	2563	49	0
2	B	42	0	0	1	0
3	A	53	0	0	2	0
3	B	65	0	0	6	0
All	All	5212	0	5126	85	0

The all-atom clashscore is defined as the number of clashes found per 1000 atoms (including hydrogen atoms). The all-atom clashscore for this structure is 8.

All (85) close contacts within the same asymmetric unit are listed below, sorted by their clash magnitude.

Atom-1	Atom-2	Interatomic distance (Å)	Clash overlap (Å)
2:B:400:A7R:O05	2:B:400:A7R:O08	2.03	0.75
1:A:284:ASN:O	1:A:288:THR:OG1	2.04	0.75
1:B:196:GLU:OE2	3:B:501:HOH:O	2.05	0.73
1:B:268:TRP:HE3	1:B:273:ARG:HH11	1.38	0.70
1:B:151:ARG:HD3	1:B:194:LEU:HD12	1.72	0.70
1:B:276:ALA:O	3:B:502:HOH:O	2.09	0.68
1:B:268:TRP:HA	1:B:273:ARG:HD3	1.77	0.65
1:A:267:GLU:HG3	1:A:270:ARG:NH2	2.13	0.64
1:B:213:GLU:O	1:B:214:THR:OG1	2.17	0.63
1:B:18:LEU:HD21	1:B:311:MET:HE3	1.80	0.63
1:A:244:ASN:HA	1:A:247:ILE:HD12	1.79	0.63
1:A:9:HIS:CE1	1:A:54:PRO:HG2	2.35	0.61
1:A:151:ARG:HE	1:A:217:LEU:HD11	1.64	0.61
1:B:216:HIS:NE2	1:B:264:GLU:OE2	2.34	0.61
1:A:282:LEU:O	3:A:401:HOH:O	2.16	0.60
1:B:322:PRO:HG2	1:B:325:ALA:HB2	1.83	0.60
1:A:120:LEU:HD13	1:A:124:ARG:HH22	1.68	0.58
1:A:218:ILE:HG23	1:A:241:VAL:HA	1.84	0.58
1:B:4:LYS:NZ	3:B:510:HOH:O	2.37	0.57
1:A:258:TYR:O	1:A:288:THR:HA	2.06	0.56
1:A:213:GLU:OE2	1:A:237:ARG:NH2	2.38	0.56
1:A:300:GLU:H	1:A:300:GLU:CD	2.10	0.56
1:A:216:HIS:HE1	1:A:264:GLU:OE2	1.89	0.55
1:A:153:MET:HE2	1:A:179:LEU:HD21	1.87	0.55
1:B:90:GLY:HA2	1:B:329:PRO:HB2	1.88	0.55
1:A:326:ILE:HG22	1:B:311:MET:SD	2.48	0.54
1:A:203:TYR:HD1	1:A:231:TYR:HB2	1.73	0.54
1:A:226:MET:HG2	1:A:254:LYS:NZ	2.23	0.53
1:B:137:THR:HG23	1:B:138:LEU:HG	1.90	0.53

Continued on next page...

Continued from previous page...

Atom-1	Atom-2	Interatomic distance (Å)	Clash overlap (Å)
1:B:279:LYS:HA	1:B:282:LEU:HB2	1.89	0.53
1:B:224:ALA:HA	1:B:254:LYS:NZ	2.23	0.52
1:B:214:THR:O	1:B:217:LEU:HB2	2.09	0.52
1:A:219:ASP:N	1:A:219:ASP:OD1	2.43	0.52
1:A:218:ILE:HD11	1:A:223:LEU:HD21	1.92	0.51
1:B:223:LEU:O	1:B:254:LYS:NZ	2.44	0.51
1:B:194:LEU:HD11	1:B:217:LEU:HD21	1.92	0.51
1:A:142:GLY:HA3	3:A:450:HOH:O	2.10	0.50
1:B:84:ASN:O	1:B:88:ARG:HG3	2.11	0.50
1:B:193:THR:N	3:B:501:HOH:O	2.43	0.50
1:A:96:VAL:HG21	1:A:305:ILE:HG23	1.95	0.49
1:A:100:LEU:HG	1:A:296:SER:HB3	1.95	0.48
1:A:173:TYR:HD2	1:A:189:VAL:HG22	1.79	0.48
1:B:219:ASP:HB2	3:B:516:HOH:O	2.12	0.48
1:B:268:TRP:HB3	1:B:273:ARG:NH1	2.28	0.48
1:A:173:TYR:CZ	1:A:191:ARG:HB2	2.49	0.48
1:B:214:THR:HB	1:B:217:LEU:HD12	1.96	0.48
1:B:120:LEU:HB3	1:B:124:ARG:HH12	1.78	0.47
1:B:263:PHE:O	1:B:266:GLU:HG2	2.15	0.47
1:B:198:LEU:O	1:B:226:MET:HA	2.14	0.47
1:B:237:ARG:NH2	1:B:267:GLU:OE2	2.47	0.47
1:A:149:GLY:HA2	1:A:172:LEU:O	2.14	0.47
1:A:195:ASP:OD1	1:A:195:ASP:N	2.48	0.47
1:B:76:LYS:HD2	1:B:97:PRO:O	2.16	0.45
1:B:83:VAL:HG22	1:B:93:LEU:HD23	1.98	0.45
1:B:184:GLU:HA	1:B:189:VAL:HG23	1.97	0.45
1:A:67:LYS:HE2	1:A:67:LYS:HB3	1.64	0.45
1:A:198:LEU:O	1:A:226:MET:HA	2.16	0.45
1:A:239:SER:HB3	1:A:270:ARG:CZ	2.47	0.44
1:A:298:VAL:O	1:A:302:ARG:HG2	2.17	0.44
1:B:278:PRO:HD3	3:B:502:HOH:O	2.16	0.44
1:A:177:ILE:HD13	1:B:326:ILE:O	2.17	0.44
1:A:87:THR:HG23	1:A:329:PRO:HA	2.00	0.44
1:B:44:LYS:O	1:B:66:PRO:HD2	2.18	0.44
1:B:219:ASP:H	1:B:222:ALA:HB3	1.82	0.44
1:B:120:LEU:HD11	1:B:289:PHE:CD1	2.53	0.44
1:B:53:MET:SD	1:B:293:HIS:NE2	2.91	0.43
1:B:151:ARG:NH1	1:B:217:LEU:HD11	2.34	0.43
1:B:236:CYS:O	1:B:262:VAL:HG21	2.18	0.43
1:B:236:CYS:O	1:B:262:VAL:HG11	2.18	0.43
1:B:40:ILE:O	1:B:44:LYS:HG3	2.19	0.43

Continued on next page...

Continued from previous page...

Atom-1	Atom-2	Interatomic distance (Å)	Clash overlap (Å)
1:B:18:LEU:HD21	1:B:311:MET:CE	2.47	0.43
1:A:267:GLU:HG3	1:A:270:ARG:CZ	2.49	0.42
1:B:151:ARG:O	1:B:208:VAL:HG23	2.20	0.42
1:B:87:THR:OG1	1:B:327:ASN:ND2	2.46	0.42
1:A:151:ARG:HD3	1:A:151:ARG:C	2.40	0.42
1:B:258:TYR:O	1:B:288:THR:HA	2.19	0.42
1:B:92:TRP:CH2	1:B:321:LYS:HG3	2.55	0.42
1:B:94:THR:HG21	1:B:312:ASN:HB3	2.02	0.42
1:A:153:MET:HG3	1:A:173:TYR:CD1	2.55	0.41
1:A:298:VAL:HG23	1:A:301:VAL:HB	2.02	0.41
1:B:217:LEU:O	1:B:217:LEU:HD23	2.21	0.41
1:A:103:PRO:HG3	1:A:301:VAL:HG21	2.02	0.41
1:A:151:ARG:HG3	1:A:217:LEU:HD21	2.02	0.41
1:B:117:ARG:HA	1:B:117:ARG:HD2	1.91	0.40
1:A:216:HIS:CD2	1:B:180:ASN:HD22	2.40	0.40

There are no symmetry-related clashes.

5.3 Torsion angles [i](#)

5.3.1 Protein backbone [i](#)

In the following table, the Percentiles column shows the percent Ramachandran outliers of the chain as a percentile score with respect to all X-ray entries followed by that with respect to entries of similar resolution.

The Analysed column shows the number of residues for which the backbone conformation was analysed, and the total number of residues.

Mol	Chain	Analysed	Favoured	Allowed	Outliers	Percentiles	
1	A	327/338 (97%)	312 (95%)	14 (4%)	1 (0%)	41	49
1	B	327/338 (97%)	314 (96%)	11 (3%)	2 (1%)	25	29
All	All	654/676 (97%)	626 (96%)	25 (4%)	3 (0%)	29	34

All (3) Ramachandran outliers are listed below:

Mol	Chain	Res	Type
1	B	236	CYS
1	A	128	SER
1	B	329	PRO

5.3.2 Protein sidechains [i](#)

In the following table, the Percentiles column shows the percent sidechain outliers of the chain as a percentile score with respect to all X-ray entries followed by that with respect to entries of similar resolution.

The Analysed column shows the number of residues for which the sidechain conformation was analysed, and the total number of residues.

Mol	Chain	Analysed	Rotameric	Outliers	Percentiles	
1	A	265/271 (98%)	256 (97%)	9 (3%)	37	48
1	B	265/271 (98%)	258 (97%)	7 (3%)	46	58
All	All	530/542 (98%)	514 (97%)	16 (3%)	41	52

All (16) residues with a non-rotameric sidechain are listed below:

Mol	Chain	Res	Type
1	A	56	SER
1	A	151	ARG
1	A	194	LEU
1	A	195	ASP
1	A	215	LEU
1	A	254	LYS
1	A	265	MET
1	A	284	ASN
1	A	330	TYR
1	B	36	ARG
1	B	151	ARG
1	B	225	LYS
1	B	265	MET
1	B	293	HIS
1	B	299	LYS
1	B	330	TYR

Sometimes sidechains can be flipped to improve hydrogen bonding and reduce clashes. All (2) such sidechains are listed below:

Mol	Chain	Res	Type
1	A	216	HIS
1	B	275	GLN

5.3.3 RNA [i](#)

There are no RNA molecules in this entry.

5.4 Non-standard residues in protein, DNA, RNA chains [i](#)

There are no non-standard protein/DNA/RNA residues in this entry.

5.5 Carbohydrates [i](#)

There are no monosaccharides in this entry.

5.6 Ligand geometry [i](#)

1 ligand is modelled in this entry.

In the following table, the Counts columns list the number of bonds (or angles) for which Mogul statistics could be retrieved, the number of bonds (or angles) that are observed in the model and the number of bonds (or angles) that are defined in the Chemical Component Dictionary. The Link column lists molecule types, if any, to which the group is linked. The Z score for a bond length (or angle) is the number of standard deviations the observed value is removed from the expected value. A bond length (or angle) with $|Z| > 2$ is considered an outlier worth inspection. RMSZ is the root-mean-square of all Z scores of the bond lengths (or angles).

Mol	Type	Chain	Res	Link	Bond lengths			Bond angles		
					Counts	RMSZ	# Z > 2	Counts	RMSZ	# Z > 2
2	A7R	B	400	-	43,45,45	3.52	24 (55%)	59,68,68	2.52	17 (28%)

In the following table, the Chirals column lists the number of chiral outliers, the number of chiral centers analysed, the number of these observed in the model and the number defined in the Chemical Component Dictionary. Similar counts are reported in the Torsion and Rings columns. '-' means no outliers of that kind were identified.

Mol	Type	Chain	Res	Link	Chirals	Torsions	Rings
2	A7R	B	400	-	-	10/30/62/62	0/4/4/4

All (24) bond length outliers are listed below:

Mol	Chain	Res	Type	Atoms	Z	Observed(Å)	Ideal(Å)
2	B	400	A7R	C06-C05	-10.90	1.23	1.53
2	B	400	A7R	O02-C08	-8.21	1.30	1.40
2	B	400	A7R	C01-C03	-6.50	1.36	1.53
2	B	400	A7R	C16-N02	5.60	1.43	1.33
2	B	400	A7R	O15-C18	-5.47	1.13	1.23
2	B	400	A7R	O01-C04	-5.16	1.30	1.42
2	B	400	A7R	O01-C03	5.10	1.56	1.45
2	B	400	A7R	C18-N05	-4.25	1.27	1.36

Continued on next page...

Continued from previous page...

Mol	Chain	Res	Type	Atoms	Z	Observed(Å)	Ideal(Å)
2	B	400	A7R	C18-N03	-4.24	1.31	1.40
2	B	400	A7R	C20-N04	4.05	1.43	1.33
2	B	400	A7R	O14-C16	-3.84	1.17	1.24
2	B	400	A7R	C11-N01	-3.39	1.31	1.35
2	B	400	A7R	C17-N03	-3.39	1.30	1.38
2	B	400	A7R	O05-C05	2.98	1.50	1.43
2	B	400	A7R	O04-C02	-2.88	1.35	1.43
2	B	400	A7R	C19-C20	-2.81	1.36	1.42
2	B	400	A7R	O02-C07	2.72	1.51	1.45
2	B	400	A7R	C10-C07	-2.67	1.43	1.51
2	B	400	A7R	P01-O11	-2.53	1.43	1.55
2	B	400	A7R	P02-O13	-2.46	1.43	1.55
2	B	400	A7R	C12-N01	-2.39	1.29	1.35
2	B	400	A7R	P02-O12	-2.19	1.43	1.50
2	B	400	A7R	C02-C04	2.18	1.60	1.53
2	B	400	A7R	C09-C03	-2.08	1.45	1.51

All (17) bond angle outliers are listed below:

Mol	Chain	Res	Type	Atoms	Z	Observed(°)	Ideal(°)
2	B	400	A7R	C03-O01-C04	-8.22	91.33	109.47
2	B	400	A7R	C04-N03-C18	6.44	132.67	118.44
2	B	400	A7R	C04-N03-C17	-6.07	107.80	120.78
2	B	400	A7R	O15-C18-N05	-5.99	112.89	122.33
2	B	400	A7R	O01-C04-N03	5.62	121.09	108.36
2	B	400	A7R	O04-C02-C04	4.16	124.43	110.10
2	B	400	A7R	O07-P01-O10	3.69	123.56	108.94
2	B	400	A7R	C02-C04-N03	3.46	122.89	113.25
2	B	400	A7R	C07-O02-C08	-3.44	106.78	109.92
2	B	400	A7R	O11-P01-O09	-3.23	98.53	107.27
2	B	400	A7R	O15-C18-N03	2.87	124.52	118.90
2	B	400	A7R	O03-C01-C03	2.58	118.49	111.08
2	B	400	A7R	C11-C13-C16	2.40	126.39	119.46
2	B	400	A7R	C13-C16-N02	2.28	120.55	117.74
2	B	400	A7R	O14-C16-N02	-2.26	119.35	122.62
2	B	400	A7R	N03-C18-N05	2.18	122.58	118.80
2	B	400	A7R	C01-C02-C04	-2.02	97.63	101.46

There are no chirality outliers.

All (10) torsion outliers are listed below:

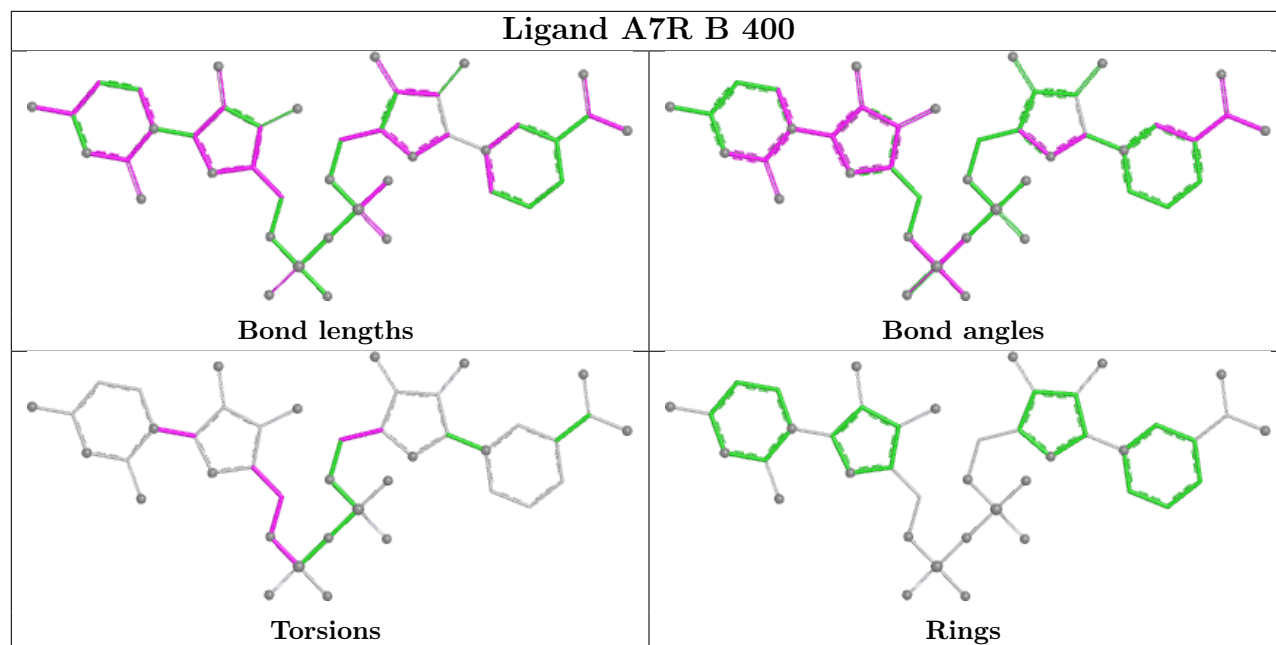
Mol	Chain	Res	Type	Atoms
2	B	400	A7R	O02-C07-C10-O08
2	B	400	A7R	C09-O07-P01-O09
2	B	400	A7R	C09-O07-P01-O10
2	B	400	A7R	C01-C03-C09-O07
2	B	400	A7R	O01-C03-C09-O07
2	B	400	A7R	C05-C07-C10-O08
2	B	400	A7R	C09-O07-P01-O11
2	B	400	A7R	O01-C04-N03-C17
2	B	400	A7R	O01-C04-N03-C18
2	B	400	A7R	C03-C09-O07-P01

There are no ring outliers.

1 monomer is involved in 1 short contact:

Mol	Chain	Res	Type	Clashes	Symm-Clashes
2	B	400	A7R	1	0

The following is a two-dimensional graphical depiction of Mogul quality analysis of bond lengths, bond angles, torsion angles, and ring geometry for all instances of the Ligand of Interest. In addition, ligands with molecular weight > 250 and outliers as shown on the validation Tables will also be included. For torsion angles, if less than 5% of the Mogul distribution of torsion angles is within 10 degrees of the torsion angle in question, then that torsion angle is considered an outlier. Any bond that is central to one or more torsion angles identified as an outlier by Mogul will be highlighted in the graph. For rings, the root-mean-square deviation (RMSD) between the ring in question and similar rings identified by Mogul is calculated over all ring torsion angles. If the average RMSD is greater than 60 degrees and the minimal RMSD between the ring in question and any Mogul-identified rings is also greater than 60 degrees, then that ring is considered an outlier. The outliers are highlighted in purple. The color gray indicates Mogul did not find sufficient equivalents in the CSD to analyse the geometry.



5.7 Other polymers [i](#)

There are no such residues in this entry.

5.8 Polymer linkage issues [i](#)

There are no chain breaks in this entry.

6 Fit of model and data

6.1 Protein, DNA and RNA chains

In the following table, the column labelled ‘#RSRZ > 2’ contains the number (and percentage) of RSRZ outliers, followed by percent RSRZ outliers for the chain as percentile scores relative to all X-ray entries and entries of similar resolution. The OWAB column contains the minimum, median, 95th percentile and maximum values of the occupancy-weighted average B-factor per residue. The column labelled ‘Q < 0.9’ lists the number of (and percentage) of residues with an average occupancy less than 0.9.

Mol	Chain	Analysed	<RSRZ>	#RSRZ>2	OWAB(Å ²)	Q<0.9
1	A	329/338 (97%)	0.44	23 (6%) 16 13	29, 46, 76, 113	0
1	B	329/338 (97%)	0.42	22 (6%) 17 14	25, 44, 70, 124	0
All	All	658/676 (97%)	0.43	45 (6%) 17 13	25, 45, 76, 124	0

All (45) RSRZ outliers are listed below:

Mol	Chain	Res	Type	RSRZ
1	B	269	ILE	12.2
1	A	172	LEU	7.3
1	B	270	ARG	7.2
1	A	281	LEU	5.7
1	B	271	ALA	4.9
1	A	217	LEU	4.8
1	B	330	TYR	4.7
1	A	271	ALA	4.5
1	B	215	LEU	4.5
1	B	214	THR	4.3
1	A	272	ASP	4.2
1	A	269	ILE	3.7
1	A	200	LYS	3.3
1	B	126	ILE	3.3
1	B	263	PHE	3.2
1	B	181	ALA	3.1
1	A	198	LEU	3.1
1	A	275	GLN	3.0
1	A	246	VAL	2.9
1	A	268	TRP	2.9
1	A	226	MET	2.8
1	B	272	ASP	2.6
1	B	249	ALA	2.6
1	B	281	LEU	2.6

Continued on next page...

Continued from previous page...

Mol	Chain	Res	Type	RSRZ
1	B	179	LEU	2.5
1	B	268	TRP	2.5
1	A	151	ARG	2.5
1	B	267	GLU	2.5
1	A	89	HIS	2.4
1	A	276	ALA	2.3
1	B	97	PRO	2.2
1	A	313	ILE	2.2
1	A	62	LEU	2.2
1	B	182	GLU	2.2
1	B	99	LEU	2.2
1	B	276	ALA	2.1
1	B	177	ILE	2.1
1	B	327	ASN	2.1
1	A	196	GLU	2.1
1	A	273	ARG	2.1
1	A	182	GLU	2.1
1	A	179	LEU	2.1
1	A	270	ARG	2.1
1	B	23	ALA	2.0
1	A	274	PRO	2.0

6.2 Non-standard residues in protein, DNA, RNA chains [i](#)

There are no non-standard protein/DNA/RNA residues in this entry.

6.3 Carbohydrates [i](#)

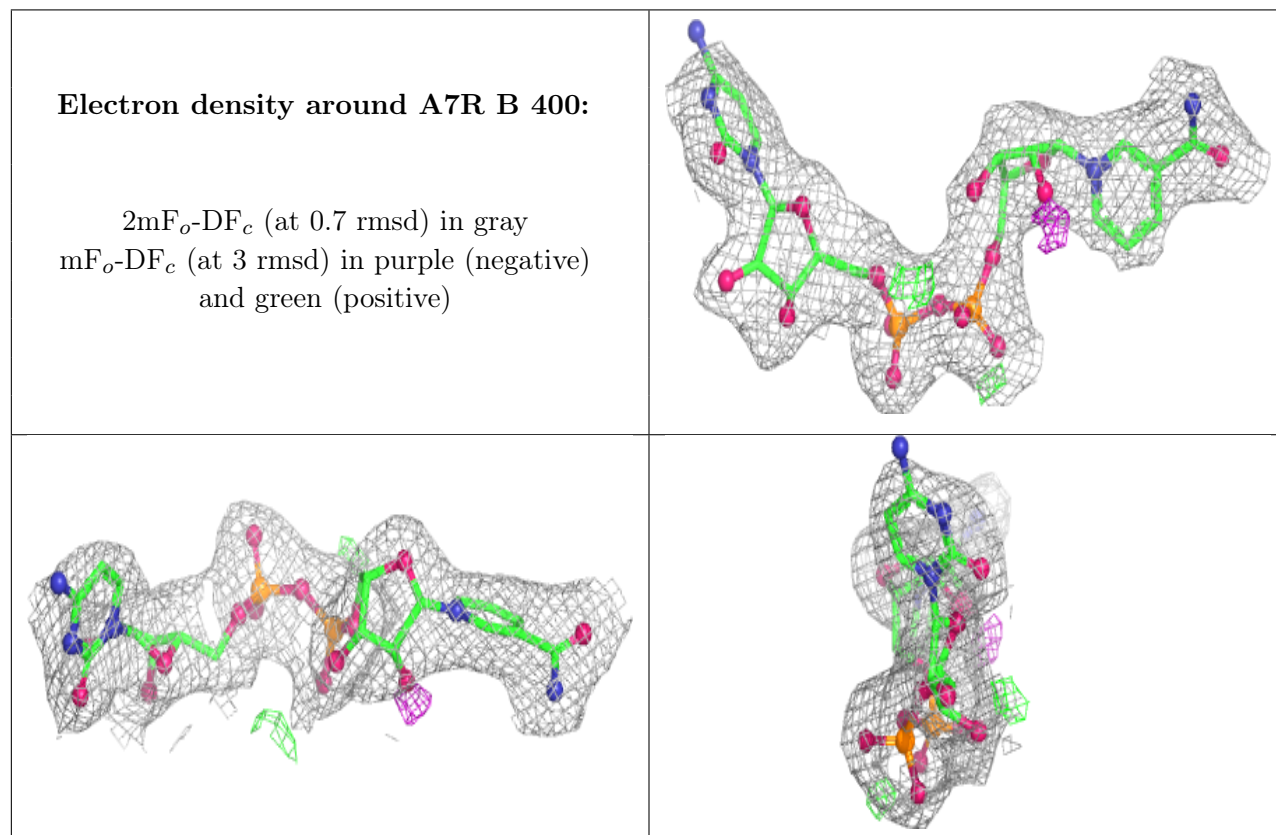
There are no monosaccharides in this entry.

6.4 Ligands [i](#)

In the following table, the Atoms column lists the number of modelled atoms in the group and the number defined in the chemical component dictionary. The B-factors column lists the minimum, median, 95th percentile and maximum values of B factors of atoms in the group. The column labelled 'Q< 0.9' lists the number of atoms with occupancy less than 0.9.

Mol	Type	Chain	Res	Atoms	RSCC	RSR	B-factors(Å ²)	Q<0.9
2	A7R	B	400	42/42	0.92	0.15	34,53,60,74	0

The following is a graphical depiction of the model fit to experimental electron density of all instances of the Ligand of Interest. In addition, ligands with molecular weight > 250 and outliers as shown on the geometry validation Tables will also be included. Each fit is shown from different orientation to approximate a three-dimensional view.



6.5 Other polymers [i](#)

There are no such residues in this entry.