



Full wwPDB X-ray Structure Validation Report ⓘ

Mar 9, 2018 – 10:43 am GMT

PDB ID : 4II5
Title : Structure of PCDK2/CYCLINA bound to ADP and 1 MAGNESIUM ION
Authors : Jacobsen, D.M.; Bao, Z.-Q.; O'Brien, P.J.; Brooks III, C.L.; Young, M.A.
Deposited on : 2012-12-19
Resolution : 2.15 Å(reported)

This is a Full wwPDB X-ray Structure Validation Report for a publicly released PDB entry.

We welcome your comments at validation@mail.wwpdb.org

A user guide is available at

<https://www.wwpdb.org/validation/2017/XrayValidationReportHelp>

with specific help available everywhere you see the ⓘ symbol.

The following versions of software and data (see [references ⓘ](#)) were used in the production of this report:

MolProbity : 4.02b-467
Mogul : 1.7.3 (157068), CSD as539be (2018)
Xtrriage (Phenix) : 1.13
EDS : trunk30967
Percentile statistics : 20171227.v01 (using entries in the PDB archive December 27th 2017)
Refmac : 5.8.0158
CCP4 : 7.0 (Gargrove)
Ideal geometry (proteins) : Engh & Huber (2001)
Ideal geometry (DNA, RNA) : Parkinson et al. (1996)
Validation Pipeline (wwPDB-VP) : trunk30967

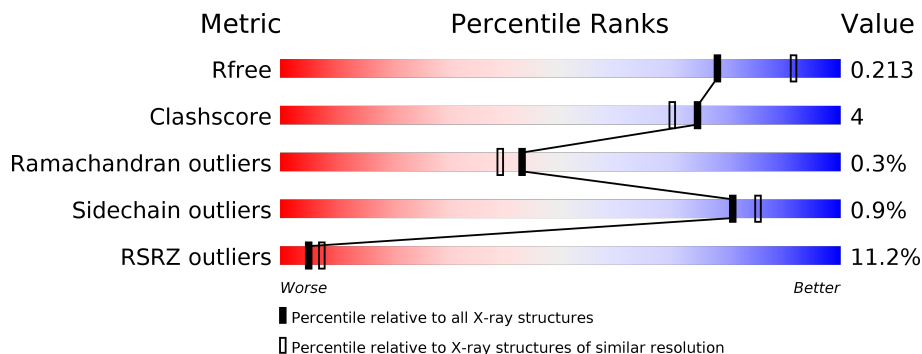
1 Overall quality at a glance

The following experimental techniques were used to determine the structure:

X-RAY DIFFRACTION

The reported resolution of this entry is 2.15 Å.

Percentile scores (ranging between 0-100) for global validation metrics of the entry are shown in the following graphic. The table shows the number of entries on which the scores are based.



Metric	Whole archive (#Entries)	Similar resolution (#Entries, resolution range(Å))
R_{free}	111664	1287 (2.16-2.16)
Clashscore	122126	1390 (2.16-2.16)
Ramachandran outliers	120053	1368 (2.16-2.16)
Sidechain outliers	120020	1367 (2.16-2.16)
RSRZ outliers	108989	1262 (2.16-2.16)

The table below summarises the geometric issues observed across the polymeric chains and their fit to the electron density. The red, orange, yellow and green segments on the lower bar indicate the fraction of residues that contain outliers for ≥ 3 , 2, 1 and 0 types of geometric quality criteria. A grey segment represents the fraction of residues that are not modelled. The numeric value for each fraction is indicated below the corresponding segment, with a dot representing fractions $\leq 5\%$. The upper red bar (where present) indicates the fraction of residues that have poor fit to the electron density. The numeric value is given above the bar.

Mol	Chain	Length	Quality of chain
1	A	298	 15% 88% 10% ..
1	C	298	 13% 88% 10% ..
2	B	258	 8% 93% 6% .
2	D	258	 7% 93% 7%

2 Entry composition [i](#)

There are 6 unique types of molecules in this entry. The entry contains 9527 atoms, of which 0 are hydrogens and 0 are deuteriums.

In the tables below, the ZeroOcc column contains the number of atoms modelled with zero occupancy, the AltConf column contains the number of residues with at least one atom in alternate conformation and the Trace column contains the number of residues modelled with at most 2 atoms.

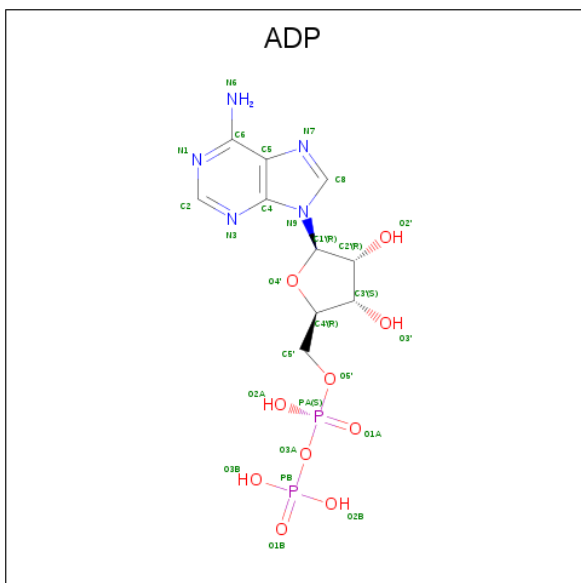
- Molecule 1 is a protein called Cyclin-dependent kinase 2.

Mol	Chain	Residues	Atoms					ZeroOcc	AltConf	Trace	
			Total	C	N	O	P				S
1	A	296	Total 2382	C 1547	N 403	O 423	P 1	S 8	0	0	0
1	C	296	Total 2382	C 1547	N 403	O 423	P 1	S 8	0	0	0

- Molecule 2 is a protein called Cyclin-A2.

Mol	Chain	Residues	Atoms					ZeroOcc	AltConf	Trace
			Total	C	N	O	S			
2	B	256	Total 2068	C 1341	N 335	O 381	S 11	0	1	0
2	D	257	Total 2074	C 1344	N 336	O 383	S 11	0	1	0

- Molecule 3 is ADENOSINE-5'-DIPHOSPHATE (three-letter code: ADP) (formula: $C_{10}H_{15}N_5O_{10}P_2$).

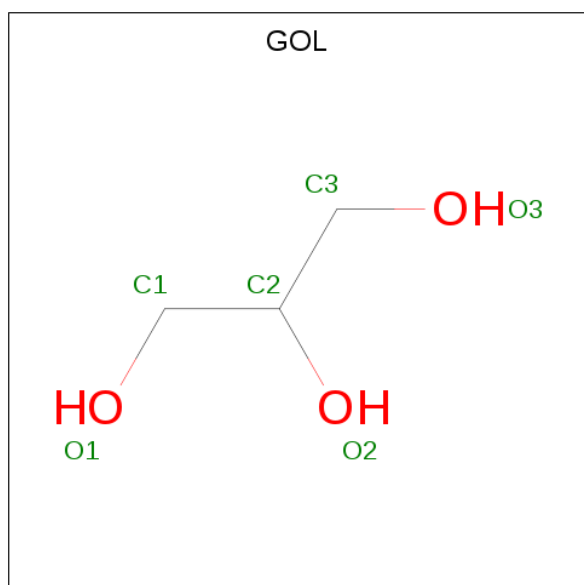


Mol	Chain	Residues	Atoms					ZeroOcc	AltConf
3	A	1	Total	C	N	O	P	0	0
			27	10	5	10	2		
3	C	1	Total	C	N	O	P	0	0
			27	10	5	10	2		

- Molecule 4 is MAGNESIUM ION (three-letter code: MG) (formula: Mg).

Mol	Chain	Residues	Atoms		ZeroOcc	AltConf
4	A	1	Total	Mg	0	0
			1	1		
4	C	1	Total	Mg	0	0
			1	1		

- Molecule 5 is GLYCEROL (three-letter code: GOL) (formula: C₃H₈O₃).



Mol	Chain	Residues	Atoms			ZeroOcc	AltConf
5	A	1	Total	C	O	0	0
			6	3	3		
5	B	1	Total	C	O	0	0
			6	3	3		
5	B	1	Total	C	O	0	0
			6	3	3		
5	C	1	Total	C	O	0	0
			6	3	3		
5	C	1	Total	C	O	0	0
			6	3	3		
5	D	1	Total	C	O	0	0
			6	3	3		

Continued on next page...

Continued from previous page...

Mol	Chain	Residues	Atoms			ZeroOcc	AltConf
5	D	1	Total	C	O	0	0
			6	3	3		
5	D	1	Total	C	O	0	0
			6	3	3		

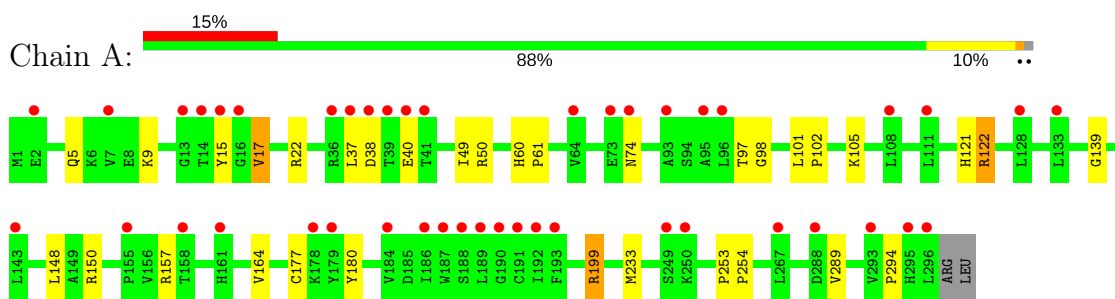
- Molecule 6 is water.

Mol	Chain	Residues	Atoms		ZeroOcc	AltConf
6	A	145	Total	O	0	0
			145	145		
6	B	100	Total	O	0	0
			100	100		
6	C	137	Total	O	0	0
			137	137		
6	D	135	Total	O	0	0
			135	135		

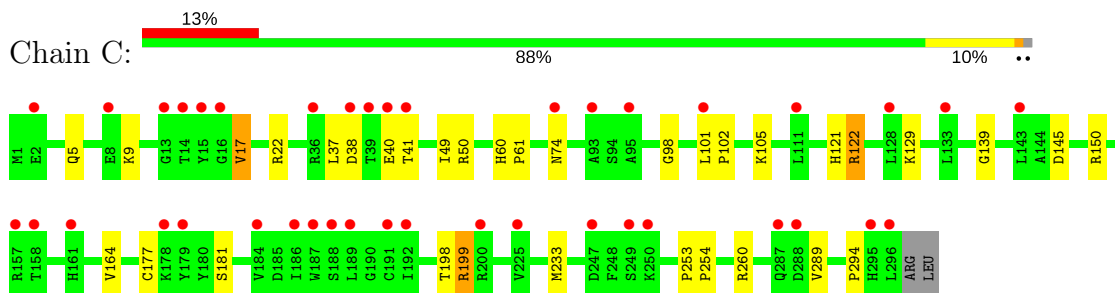
3 Residue-property plots [i](#)

These plots are drawn for all protein, RNA and DNA chains in the entry. The first graphic for a chain summarises the proportions of the various outlier classes displayed in the second graphic. The second graphic shows the sequence view annotated by issues in geometry and electron density. Residues are color-coded according to the number of geometric quality criteria for which they contain at least one outlier: green = 0, yellow = 1, orange = 2 and red = 3 or more. A red dot above a residue indicates a poor fit to the electron density ($RSRZ > 2$). Stretches of 2 or more consecutive residues without any outlier are shown as a green connector. Residues present in the sample, but not in the model, are shown in grey.

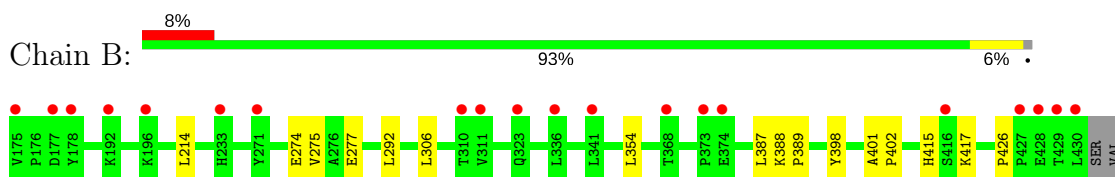
- Molecule 1: Cyclin-dependent kinase 2



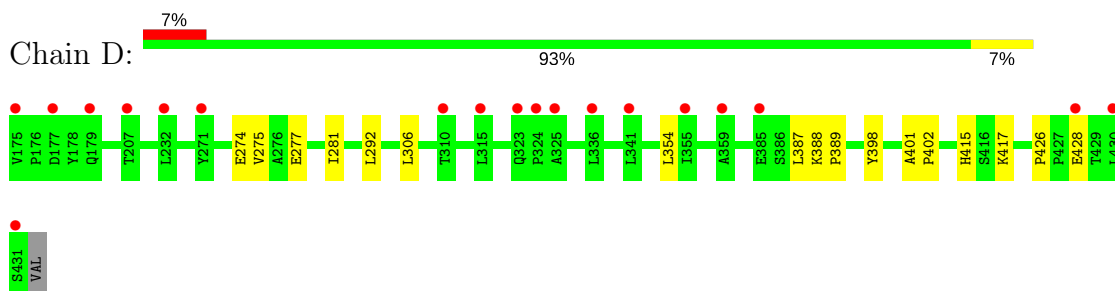
- Molecule 1: Cyclin-dependent kinase 2



- Molecule 2: Cyclin-A2



- Molecule 2: Cyclin-A2



4 Data and refinement statistics i

Property	Value	Source
Space group	P 1 21 1	Depositor
Cell constants a, b, c, α , β , γ	71.14Å 164.14Å 73.45Å 90.00° 107.04° 90.00°	Depositor
Resolution (Å)	29.56 – 2.15 29.56 – 2.15	Depositor EDS
% Data completeness (in resolution range)	95.3 (29.56-2.15) 95.3 (29.56-2.15)	Depositor EDS
R_{merge}	(Not available)	Depositor
R_{sym}	0.13	Depositor
$\langle I/\sigma(I) \rangle$ ¹	1.79 (at 2.16Å)	Xtrriage
Refinement program	PHENIX (phenix.refine: 1.7_650)	Depositor
R, R_{free}	0.200 , 0.226 0.188 , 0.213	Depositor DCC
R_{free} test set	2007 reflections (2.41%)	wwPDB-VP
Wilson B-factor (Å ²)	32.7	Xtrriage
Anisotropy	0.582	Xtrriage
Bulk solvent k_{sol} (e/Å ³), B_{sol} (Å ²)	0.37 , 47.4	EDS
L-test for twinning ²	$\langle L \rangle = 0.49$, $\langle L^2 \rangle = 0.33$	Xtrriage
Estimated twinning fraction	0.023 for l,-k,h	Xtrriage
F_o, F_c correlation	0.96	EDS
Total number of atoms	9527	wwPDB-VP
Average B, all atoms (Å ²)	44.0	wwPDB-VP

Xtrriage's analysis on translational NCS is as follows: *The largest off-origin peak in the Patterson function is 9.02% of the height of the origin peak. No significant pseudotranslation is detected.*

¹Intensities estimated from amplitudes.

²Theoretical values of $\langle |L| \rangle$, $\langle L^2 \rangle$ for acentric reflections are 0.5, 0.333 respectively for untwinned datasets, and 0.375, 0.2 for perfectly twinned datasets.

5 Model quality [i](#)

5.1 Standard geometry [i](#)

Bond lengths and bond angles in the following residue types are not validated in this section: TPO, GOL, MG, ADP

The Z score for a bond length (or angle) is the number of standard deviations the observed value is removed from the expected value. A bond length (or angle) with $|Z| > 5$ is considered an outlier worth inspection. RMSZ is the root-mean-square of all Z scores of the bond lengths (or angles).

Mol	Chain	Bond lengths		Bond angles	
		RMSZ	# Z >5	RMSZ	# Z >5
1	A	0.51	0/2432	0.54	0/3300
1	C	0.49	0/2432	0.54	0/3300
2	B	0.41	0/2121	0.53	0/2882
2	D	0.42	0/2127	0.53	0/2890
All	All	0.46	0/9112	0.54	0/12372

There are no bond length outliers.

There are no bond angle outliers.

There are no chirality outliers.

There are no planarity outliers.

5.2 Too-close contacts [i](#)

In the following table, the Non-H and H(model) columns list the number of non-hydrogen atoms and hydrogen atoms in the chain respectively. The H(added) column lists the number of hydrogen atoms added and optimized by MolProbity. The Clashes column lists the number of clashes within the asymmetric unit, whereas Symm-Clashes lists symmetry related clashes.

Mol	Chain	Non-H	H(model)	H(added)	Clashes	Symm-Clashes
1	A	2382	0	2425	20	0
1	C	2382	0	2425	24	0
2	B	2068	0	2088	11	0
2	D	2074	0	2093	11	0
3	A	27	0	11	0	0
3	C	27	0	12	0	0
4	A	1	0	0	0	0
4	C	1	0	0	0	0
5	A	6	0	8	0	0

Continued on next page...

Continued from previous page...

Mol	Chain	Non-H	H(model)	H(added)	Clashes	Symm-Clashes
5	B	12	0	16	2	0
5	C	12	0	16	0	0
5	D	18	0	24	0	0
6	A	145	0	0	3	0
6	B	100	0	0	0	0
6	C	137	0	0	8	0
6	D	135	0	0	1	0
All	All	9527	0	9118	64	0

The all-atom clashscore is defined as the number of clashes found per 1000 atoms (including hydrogen atoms). The all-atom clashscore for this structure is 4.

All (64) close contacts within the same asymmetric unit are listed below, sorted by their clash magnitude.

Atom-1	Atom-2	Interatomic distance (Å)	Clash overlap (Å)
1:A:15:TYR:HD1	6:A:543:HOH:O	1.52	0.93
1:A:177:CYS:HB2	1:A:233:MET:HE1	1.72	0.70
1:C:177:CYS:HB2	1:C:233:MET:HE1	1.75	0.69
1:A:139:GLY:HA2	1:A:294:PRO:HD3	1.80	0.63
1:C:139:GLY:HA2	1:C:294:PRO:HD3	1.82	0.61
1:A:253:PRO:HB2	1:A:254:PRO:HD3	1.86	0.58
1:C:253:PRO:HB2	1:C:254:PRO:HD3	1.86	0.58
1:C:199:ARG:HD2	6:C:467:HOH:O	2.06	0.55
2:D:428:GLU:HG2	6:D:637:HOH:O	2.06	0.54
2:B:274:GLU:HG2	2:B:277:GLU:HG3	1.90	0.53
2:D:274:GLU:HG2	2:D:277:GLU:HG3	1.92	0.53
1:A:121:HIS:O	1:A:122:ARG:HG3	2.10	0.51
2:B:214:LEU:HA	5:B:502:GOL:C3	2.42	0.49
2:B:214:LEU:HA	5:B:502:GOL:H31	1.95	0.49
2:B:354:LEU:HD12	2:B:387:LEU:HD23	1.96	0.48
1:A:98:GLY:HA2	1:A:199:ARG:HD2	1.95	0.48
1:A:148:LEU:CD1	6:A:544:HOH:O	2.62	0.48
1:A:101:LEU:HB2	1:A:102:PRO:HD3	1.96	0.48
1:C:9:LYS:HE2	1:C:17:VAL:HG11	1.96	0.48
1:A:50:ARG:HD3	6:A:426:HOH:O	2.14	0.47
1:C:260:ARG:HD3	6:C:519:HOH:O	2.14	0.47
1:C:98:GLY:HA2	1:C:199:ARG:HD2	1.95	0.47
1:C:199:ARG:HG3	6:C:467:HOH:O	2.14	0.47
1:C:49:ILE:HG23	2:D:306:LEU:HD12	1.96	0.47
1:C:121:HIS:O	1:C:122:ARG:HG3	2.14	0.47
1:C:101:LEU:HB2	1:C:102:PRO:HD3	1.97	0.46

Continued on next page...

Continued from previous page...

Atom-1	Atom-2	Interatomic distance (Å)	Clash overlap (Å)
2:B:398:TYR:CD2	2:B:426:PRO:HB3	2.51	0.46
2:D:415:HIS:ND1	2:D:417:LYS:HG2	2.31	0.46
1:A:9:LYS:HE2	1:A:17:VAL:HG11	1.96	0.46
1:C:105:LYS:HG2	1:C:289:VAL:HG23	1.96	0.46
2:D:354:LEU:HD12	2:D:387:LEU:HD23	1.97	0.45
1:A:37:LEU:O	1:A:40:GLU:HB2	2.16	0.45
1:C:37:LEU:O	1:C:40:GLU:HB2	2.17	0.45
1:C:41:THR:HA	6:C:514:HOH:O	2.16	0.45
1:C:199:ARG:CD	6:C:467:HOH:O	2.62	0.45
1:C:38:ASP:HB3	1:C:74:ASN:ND2	2.31	0.45
1:A:38:ASP:HB3	1:A:74:ASN:ND2	2.31	0.45
2:D:398:TYR:CD2	2:D:426:PRO:HB3	2.52	0.45
2:B:415:HIS:ND1	2:B:417:LYS:HG2	2.32	0.44
1:A:49:ILE:HG23	2:B:306:LEU:HD12	2.00	0.44
2:D:275:VAL:HG21	2:D:292:LEU:HD21	2.00	0.44
2:B:388:LYS:HB3	2:B:389:PRO:HD3	1.98	0.44
1:A:121:HIS:C	1:A:122:ARG:HG3	2.39	0.43
1:A:60:HIS:CG	1:A:61:PRO:HD2	2.53	0.43
1:C:181:SER:HB3	6:C:484:HOH:O	2.19	0.43
2:D:388:LYS:HB3	2:D:389:PRO:HD3	1.99	0.43
1:A:105:LYS:HG2	1:A:289:VAL:HG23	2.01	0.43
1:A:5:GLN:HG2	1:A:22:ARG:HB3	2.01	0.43
1:C:253:PRO:CB	1:C:254:PRO:HD3	2.48	0.43
1:C:50:ARG:HD3	6:C:476:HOH:O	2.19	0.42
1:C:60:HIS:CG	1:C:61:PRO:HD2	2.54	0.42
2:B:275:VAL:HG21	2:B:292:LEU:HD21	2.01	0.42
1:C:121:HIS:C	1:C:122:ARG:HG3	2.40	0.42
2:B:274:GLU:CG	2:B:277:GLU:HG3	2.50	0.42
2:D:274:GLU:CG	2:D:277:GLU:HG3	2.49	0.42
2:B:401:ALA:N	2:B:402:PRO:CD	2.82	0.42
1:C:5:GLN:HG2	1:C:22:ARG:HB3	2.01	0.41
2:D:281:ILE:HA	2:D:281:ILE:HD12	1.96	0.41
1:A:253:PRO:CB	1:A:254:PRO:HD3	2.49	0.41
1:A:97:THR:HG22	1:A:98:GLY:O	2.21	0.41
1:A:180:TYR:CD1	1:A:180:TYR:C	2.94	0.41
1:C:129:LYS:NZ	6:C:438:HOH:O	2.51	0.41
2:D:401:ALA:N	2:D:402:PRO:CD	2.84	0.41
1:C:198:THR:O	1:C:199:ARG:HB2	2.21	0.41

There are no symmetry-related clashes.

5.3 Torsion angles [i](#)

5.3.1 Protein backbone [i](#)

In the following table, the Percentiles column shows the percent Ramachandran outliers of the chain as a percentile score with respect to all X-ray entries followed by that with respect to entries of similar resolution.

The Analysed column shows the number of residues for which the backbone conformation was analysed, and the total number of residues.

Mol	Chain	Analysed	Favoured	Allowed	Outliers	Percentiles	
1	A	293/298 (98%)	287 (98%)	5 (2%)	1 (0%)	43	39
1	C	293/298 (98%)	287 (98%)	4 (1%)	2 (1%)	24	16
2	B	255/258 (99%)	255 (100%)	0	0	100	100
2	D	256/258 (99%)	256 (100%)	0	0	100	100
All	All	1097/1112 (99%)	1085 (99%)	9 (1%)	3 (0%)	43	39

All (3) Ramachandran outliers are listed below:

Mol	Chain	Res	Type
1	A	164	VAL
1	C	164	VAL
1	C	145	ASP

5.3.2 Protein sidechains [i](#)

In the following table, the Percentiles column shows the percent sidechain outliers of the chain as a percentile score with respect to all X-ray entries followed by that with respect to entries of similar resolution.

The Analysed column shows the number of residues for which the sidechain conformation was analysed, and the total number of residues.

Mol	Chain	Analysed	Rotameric	Outliers	Percentiles	
1	A	260/262 (99%)	255 (98%)	5 (2%)	60	64
1	C	260/262 (99%)	256 (98%)	4 (2%)	67	72
2	B	230/231 (100%)	230 (100%)	0	100	100
2	D	231/231 (100%)	231 (100%)	0	100	100
All	All	981/986 (100%)	972 (99%)	9 (1%)	81	85

All (9) residues with a non-rotameric sidechain are listed below:

Mol	Chain	Res	Type
1	A	17	VAL
1	A	122	ARG
1	A	150	ARG
1	A	157	ARG
1	A	199	ARG
1	C	17	VAL
1	C	122	ARG
1	C	150	ARG
1	C	199	ARG

Some sidechains can be flipped to improve hydrogen bonding and reduce clashes. All (9) such sidechains are listed below:

Mol	Chain	Res	Type
1	A	5	GLN
1	A	71	HIS
1	A	85	GLN
2	B	296	HIS
1	C	5	GLN
1	C	71	HIS
1	C	85	GLN
1	C	295	HIS
2	D	296	HIS

5.3.3 RNA ⓘ

There are no RNA molecules in this entry.

5.4 Non-standard residues in protein, DNA, RNA chains ⓘ

2 non-standard protein/DNA/RNA residues are modelled in this entry.

In the following table, the Counts columns list the number of bonds (or angles) for which Mogul statistics could be retrieved, the number of bonds (or angles) that are observed in the model and the number of bonds (or angles) that are defined in the Chemical Component Dictionary. The Link column lists molecule types, if any, to which the group is linked. The Z score for a bond length (or angle) is the number of standard deviations the observed value is removed from the expected value. A bond length (or angle) with $|Z| > 2$ is considered an outlier worth inspection. RMSZ is the root-mean-square of all Z scores of the bond lengths (or angles).

Mol	Type	Chain	Res	Link	Bond lengths			Bond angles		
					Counts	RMSZ	$\# Z > 2$	Counts	RMSZ	$\# Z > 2$
1	TPO	A	160	1	9,10,11	0.85	0	11,14,16	1.11	1 (9%)

Mol	Type	Chain	Res	Link	Bond lengths			Bond angles		
					Counts	RMSZ	# Z > 2	Counts	RMSZ	# Z > 2
1	TPO	C	160	1	9,10,11	0.94	0	11,14,16	1.15	1 (9%)

In the following table, the Chirals column lists the number of chiral outliers, the number of chiral centers analysed, the number of these observed in the model and the number defined in the Chemical Component Dictionary. Similar counts are reported in the Torsion and Rings columns. '-' means no outliers of that kind were identified.

Mol	Type	Chain	Res	Link	Chirals	Torsions	Rings
1	TPO	A	160	1	-	0/8/11/13	0/0/0/0
1	TPO	C	160	1	-	0/8/11/13	0/0/0/0

There are no bond length outliers.

All (2) bond angle outliers are listed below:

Mol	Chain	Res	Type	Atoms	Z	Observed(°)	Ideal(°)
1	C	160	TPO	O-C-CA	-2.15	120.07	125.09
1	A	160	TPO	O-C-CA	-2.11	120.18	125.09

There are no chirality outliers.

There are no torsion outliers.

There are no ring outliers.

No monomer is involved in short contacts.

5.5 Carbohydrates [i](#)

There are no carbohydrates in this entry.

5.6 Ligand geometry [i](#)

Of 12 ligands modelled in this entry, 2 are monoatomic - leaving 10 for Mogul analysis.

In the following table, the Counts columns list the number of bonds (or angles) for which Mogul statistics could be retrieved, the number of bonds (or angles) that are observed in the model and the number of bonds (or angles) that are defined in the Chemical Component Dictionary. The Link column lists molecule types, if any, to which the group is linked. The Z score for a bond length (or angle) is the number of standard deviations the observed value is removed from the expected value. A bond length (or angle) with $|Z| > 2$ is considered an outlier worth inspection. RMSZ is the root-mean-square of all Z scores of the bond lengths (or angles).

Mol	Type	Chain	Res	Link	Bond lengths			Bond angles		
					Counts	RMSZ	# Z > 2	Counts	RMSZ	# Z > 2
3	ADP	A	301	4	25,29,29	0.99	1 (4%)	25,45,45	2.13	7 (28%)
5	GOL	A	303	-	5,5,5	0.34	0	5,5,5	0.19	0
5	GOL	B	501	-	5,5,5	0.42	0	5,5,5	0.34	0
5	GOL	B	502	-	5,5,5	0.37	0	5,5,5	0.29	0
3	ADP	C	301	4	25,29,29	1.03	1 (4%)	25,45,45	1.76	3 (12%)
5	GOL	C	303	-	5,5,5	0.37	0	5,5,5	0.30	0
5	GOL	C	304	-	5,5,5	0.33	0	5,5,5	0.11	0
5	GOL	D	501	-	5,5,5	0.41	0	5,5,5	0.27	0
5	GOL	D	502	-	5,5,5	0.33	0	5,5,5	0.19	0
5	GOL	D	503	-	5,5,5	0.26	0	5,5,5	0.30	0

In the following table, the Chirals column lists the number of chiral outliers, the number of chiral centers analysed, the number of these observed in the model and the number defined in the Chemical Component Dictionary. Similar counts are reported in the Torsion and Rings columns. '-' means no outliers of that kind were identified.

Mol	Type	Chain	Res	Link	Chirals	Torsions	Rings
3	ADP	A	301	4	-	0/12/32/32	0/3/3/3
5	GOL	A	303	-	-	0/4/4/4	0/0/0/0
5	GOL	B	501	-	-	0/4/4/4	0/0/0/0
5	GOL	B	502	-	-	0/4/4/4	0/0/0/0
3	ADP	C	301	4	-	0/12/32/32	0/3/3/3
5	GOL	C	303	-	-	0/4/4/4	0/0/0/0
5	GOL	C	304	-	-	0/4/4/4	0/0/0/0
5	GOL	D	501	-	-	0/4/4/4	0/0/0/0
5	GOL	D	502	-	-	0/4/4/4	0/0/0/0
5	GOL	D	503	-	-	0/4/4/4	0/0/0/0

All (2) bond length outliers are listed below:

Mol	Chain	Res	Type	Atoms	Z	Observed(Å)	Ideal(Å)
3	A	301	ADP	C5-C4	3.04	1.47	1.40
3	C	301	ADP	C5-C4	3.04	1.47	1.40

All (10) bond angle outliers are listed below:

Mol	Chain	Res	Type	Atoms	Z	Observed(°)	Ideal(°)
3	A	301	ADP	N3-C2-N1	-7.16	122.74	128.86
3	C	301	ADP	N3-C2-N1	-6.95	122.91	128.86
3	A	301	ADP	C4'-O4'-C1'	-2.64	107.08	109.83
3	C	301	ADP	C4-C5-N7	-2.53	106.96	109.41
3	A	301	ADP	C4-C5-N7	-2.10	107.38	109.41

Continued on next page...

Continued from previous page...

Mol	Chain	Res	Type	Atoms	Z	Observed(°)	Ideal(°)
3	A	301	ADP	C2-N1-C6	2.13	122.37	118.75
3	C	301	ADP	C2-N1-C6	2.16	122.43	118.75
3	A	301	ADP	C5'-C4'-C3'	2.41	124.36	115.29
3	A	301	ADP	O4'-C4'-C5'	3.10	119.70	109.39
3	A	301	ADP	O4'-C4'-C3'	3.64	112.34	105.15

There are no chirality outliers.

There are no torsion outliers.

There are no ring outliers.

1 monomer is involved in 2 short contacts:

Mol	Chain	Res	Type	Clashes	Symm-Clashes
5	B	502	GOL	2	0

5.7 Other polymers [i](#)

There are no such residues in this entry.

5.8 Polymer linkage issues [i](#)

There are no chain breaks in this entry.

6 Fit of model and data

6.1 Protein, DNA and RNA chains

In the following table, the column labelled ‘#RSRZ > 2’ contains the number (and percentage) of RSRZ outliers, followed by percent RSRZ outliers for the chain as percentile scores relative to all X-ray entries and entries of similar resolution. The OWAB column contains the minimum, median, 95th percentile and maximum values of the occupancy-weighted average B-factor per residue. The column labelled ‘Q < 0.9’ lists the number of (and percentage) of residues with an average occupancy less than 0.9.

Mol	Chain	Analysed	<RSRZ>	#RSRZ>2	OWAB(Å ²)	Q<0.9
1	A	295/298 (98%)	0.75	44 (14%) 2 3	24, 39, 86, 136	0
1	C	295/298 (98%)	0.64	40 (13%) 3 3	25, 40, 86, 135	0
2	B	256/258 (99%)	0.39	20 (7%) 13 17	23, 39, 63, 96	0
2	D	257/258 (99%)	0.43	19 (7%) 14 19	21, 37, 62, 96	0
All	All	1103/1112 (99%)	0.56	123 (11%) 5 7	21, 39, 78, 136	0

All (123) RSRZ outliers are listed below:

Mol	Chain	Res	Type	RSRZ
1	A	38	ASP	9.2
1	C	14	THR	7.4
1	A	39	THR	7.2
2	D	175	VAL	6.7
1	C	38	ASP	6.3
2	B	175	VAL	6.0
1	A	15	TYR	5.9
1	A	178	LYS	5.6
1	A	14	THR	5.6
1	A	13	GLY	5.4
2	B	271	TYR	5.0
1	C	295	HIS	4.9
1	A	36	ARG	4.9
1	A	296	LEU	4.8
1	C	15	TYR	4.8
1	A	295	HIS	4.7
1	A	74	ASN	4.7
1	A	2	GLU	4.5
1	A	189	LEU	4.5
1	C	128	LEU	4.4
1	C	39	THR	4.4

Continued on next page...

Continued from previous page...

Mol	Chain	Res	Type	RSRZ
2	D	323	GLN	4.4
1	C	40	GLU	4.1
2	B	428	GLU	4.1
1	A	179	TYR	4.0
2	D	271	TYR	4.0
1	C	178	LYS	3.9
1	C	161	HIS	3.9
1	C	288	ASP	3.8
1	C	13	GLY	3.8
1	C	2	GLU	3.8
1	A	143	LEU	3.7
1	C	36	ARG	3.7
1	C	250	LYS	3.7
1	A	37	LEU	3.7
1	C	16	GLY	3.7
1	C	189	LEU	3.6
2	D	336	LEU	3.6
1	C	225	VAL	3.6
1	A	16	GLY	3.6
1	C	74	ASN	3.5
2	D	428	GLU	3.5
1	A	161	HIS	3.5
2	B	341	LEU	3.5
1	A	96	LEU	3.4
1	A	41	THR	3.4
1	A	111	LEU	3.3
1	A	128	LEU	3.3
2	D	355	ILE	3.3
1	A	192	ILE	3.3
1	C	143	LEU	3.3
2	D	324	PRO	3.3
1	C	179	TYR	3.2
1	A	133	LEU	3.2
1	A	188	SER	3.2
1	C	192	ILE	3.2
1	C	133	LEU	3.1
2	D	315	LEU	3.1
1	A	95	ALA	3.0
2	D	310	THR	3.0
2	B	427	PRO	3.0
2	B	196	LYS	2.9
1	A	249	SER	2.9

Continued on next page...

Continued from previous page...

Mol	Chain	Res	Type	RSRZ
1	A	93	ALA	2.9
1	A	193	PHE	2.9
1	C	296	LEU	2.9
2	B	429	THR	2.8
1	A	40	GLU	2.8
2	D	359	ALA	2.8
1	C	188	SER	2.8
1	C	249	SER	2.8
2	D	431	SER	2.8
1	C	95	ALA	2.7
1	A	7	VAL	2.7
1	A	191	CYS	2.7
1	A	293	VAL	2.7
2	D	385	GLU	2.7
2	B	373	PRO	2.7
2	D	341	LEU	2.7
1	A	158	THR	2.6
1	C	8	GLU	2.6
1	C	191	CYS	2.6
1	C	186	ILE	2.6
1	A	186	ILE	2.5
1	C	200	ARG	2.5
2	B	192	LYS	2.5
1	C	287	GLN	2.5
1	C	187	TRP	2.5
1	A	108	LEU	2.5
1	C	93	ALA	2.5
1	A	190	GLY	2.5
1	C	41	THR	2.4
1	A	187	TRP	2.4
1	A	288	ASP	2.4
1	C	101	LEU	2.4
1	A	73	GLU	2.4
1	A	250	LYS	2.4
2	B	177	ASP	2.4
1	A	184	VAL	2.3
1	C	158	THR	2.3
2	D	177	ASP	2.3
2	B	430	LEU	2.3
2	B	311	VAL	2.3
1	C	184	VAL	2.3
2	B	310	THR	2.3

Continued on next page...

Continued from previous page...

Mol	Chain	Res	Type	RSRZ
2	B	178	TYR	2.3
2	D	207	THR	2.3
2	D	430	LEU	2.2
1	C	111	LEU	2.2
2	B	416	SER	2.2
1	A	155	PRO	2.2
2	D	232	LEU	2.2
1	A	64	VAL	2.1
1	A	267	LEU	2.1
2	B	336	LEU	2.1
2	B	368	THR	2.1
2	D	325	ALA	2.1
2	B	233	HIS	2.1
1	C	247	ASP	2.1
2	B	323	GLN	2.1
1	C	157	ARG	2.0
2	D	179	GLN	2.0
2	B	374	GLU	2.0

6.2 Non-standard residues in protein, DNA, RNA chains [i](#)

In the following table, the Atoms column lists the number of modelled atoms in the group and the number defined in the chemical component dictionary. The B-factors column lists the minimum, median, 95th percentile and maximum values of B factors of atoms in the group. The column labelled 'Q< 0.9' lists the number of atoms with occupancy less than 0.9.

Mol	Type	Chain	Res	Atoms	RSCC	RSR	B-factors(Å ²)	Q<0.9
1	TPO	A	160	11/12	0.93	0.22	39,53,58,67	0
1	TPO	C	160	11/12	0.95	0.20	39,53,58,67	0

6.3 Carbohydrates [i](#)

There are no carbohydrates in this entry.

6.4 Ligands [i](#)

In the following table, the Atoms column lists the number of modelled atoms in the group and the number defined in the chemical component dictionary. The B-factors column lists the minimum, median, 95th percentile and maximum values of B factors of atoms in the group. The column labelled 'Q< 0.9' lists the number of atoms with occupancy less than 0.9.

Mol	Type	Chain	Res	Atoms	RSCC	RSR	B-factors(\AA^2)	Q<0.9
5	GOL	B	501	6/6	0.61	0.26	62,64,68,72	0
5	GOL	D	502	6/6	0.76	0.20	60,68,77,80	0
5	GOL	D	501	6/6	0.77	0.29	56,63,66,66	0
4	MG	C	302	1/1	0.84	0.05	52,52,52,52	0
5	GOL	C	304	6/6	0.86	0.19	66,69,74,74	0
4	MG	A	302	1/1	0.88	0.08	49,49,49,49	0
5	GOL	B	502	6/6	0.90	0.14	55,58,63,64	0
5	GOL	C	303	6/6	0.90	0.13	44,51,54,55	0
5	GOL	D	503	6/6	0.91	0.18	52,54,67,72	0
3	ADP	C	301	27/27	0.92	0.16	41,58,64,238	0
3	ADP	A	301	27/27	0.92	0.14	32,56,66,280	0
5	GOL	A	303	6/6	0.95	0.14	40,50,58,60	0

6.5 Other polymers [i](#)

There are no such residues in this entry.