



Full wwPDB X-ray Structure Validation Report ⓘ

Mar 9, 2018 – 02:45 am GMT

PDB ID : 5IIJ
Title : Crystal structure of the pre-catalytic ternary complex of DNA polymerase lambda with a templating 8-oxo-dG and an incoming dCTP
Authors : Burak, M.J.; Guja, K.E.; Garcia-Diaz, M.
Deposited on : 2016-03-01
Resolution : 1.72 Å(reported)

This is a Full wwPDB X-ray Structure Validation Report for a publicly released PDB entry.

We welcome your comments at validation@mail.wwpdb.org

A user guide is available at

<https://www.wwpdb.org/validation/2017/XrayValidationReportHelp>

with specific help available everywhere you see the ⓘ symbol.

The following versions of software and data (see [references ⓘ](#)) were used in the production of this report:

MolProbity : 4.02b-467
Mogul : 1.7.3 (157068), CSD as539be (2018)
Xtriage (Phenix) : 1.13
EDS : trunk30967
Percentile statistics : 20171227.v01 (using entries in the PDB archive December 27th 2017)
Refmac : 5.8.0158
CCP4 : 7.0 (Gargrove)
Ideal geometry (proteins) : Engh & Huber (2001)
Ideal geometry (DNA, RNA) : Parkinson et al. (1996)
Validation Pipeline (wwPDB-VP) : trunk30967

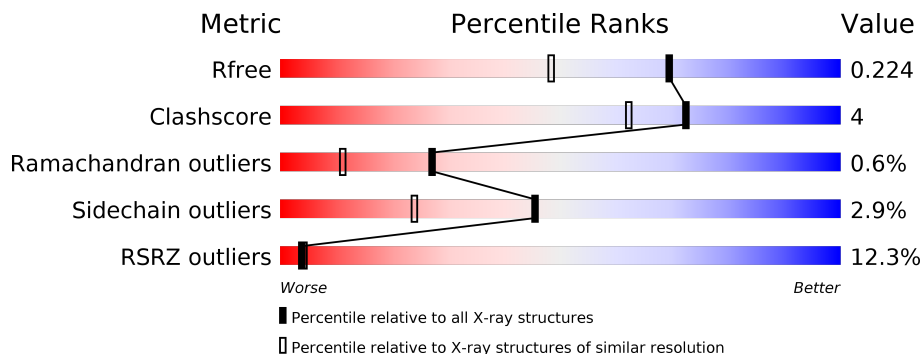
1 Overall quality at a glance

The following experimental techniques were used to determine the structure:

X-RAY DIFFRACTION

The reported resolution of this entry is 1.72 Å.

Percentile scores (ranging between 0-100) for global validation metrics of the entry are shown in the following graphic. The table shows the number of entries on which the scores are based.



Metric	Whole archive (#Entries)	Similar resolution (#Entries, resolution range(Å))
R_{free}	111664	4894 (1.74-1.70)
Clashscore	122126	5296 (1.74-1.70)
Ramachandran outliers	120053	5219 (1.74-1.70)
Sidechain outliers	120020	5219 (1.74-1.70)
RSRZ outliers	108989	4804 (1.74-1.70)

The table below summarises the geometric issues observed across the polymeric chains and their fit to the electron density. The red, orange, yellow and green segments on the lower bar indicate the fraction of residues that contain outliers for ≥ 3 , 2, 1 and 0 types of geometric quality criteria. A grey segment represents the fraction of residues that are not modelled. The numeric value for each fraction is indicated below the corresponding segment, with a dot representing fractions $\leq 5\%$. The upper red bar (where present) indicates the fraction of residues that have poor fit to the electron density. The numeric value is given above the bar.

Mol	Chain	Length	Quality of chain
1	A	334	
2	D	4	
3	P	6	
4	T	11	

2 Entry composition [i](#)

There are 8 unique types of molecules in this entry. The entry contains 3254 atoms, of which 0 are hydrogens and 0 are deuteriums.

In the tables below, the ZeroOcc column contains the number of atoms modelled with zero occupancy, the AltConf column contains the number of residues with at least one atom in alternate conformation and the Trace column contains the number of residues modelled with at most 2 atoms.

- Molecule 1 is a protein called DNA polymerase lambda.

Mol	Chain	Residues	Atoms					ZeroOcc	AltConf	Trace
			Total	C	N	O	S			
1	A	314	2388	1508	428	441	11	0	0	0

- Molecule 2 is a DNA chain called DNA (5'-D(P*GP*CP*CP*G)-3').

Mol	Chain	Residues	Atoms					ZeroOcc	AltConf	Trace
			Total	C	N	O	P			
2	D	4	83	38	16	25	4	0	0	0

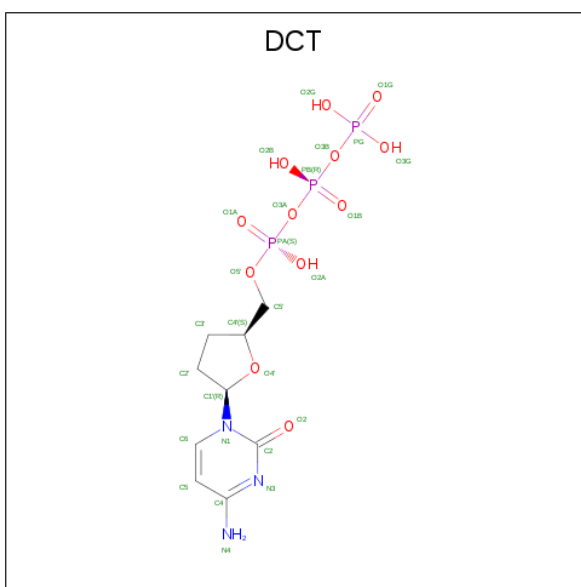
- Molecule 3 is a DNA chain called DNA (5'-D(*CP*AP*GP*TP*AP*(DOC))-3').

Mol	Chain	Residues	Atoms					ZeroOcc	AltConf	Trace
			Total	C	N	O	P			
3	P	6	118	58	23	32	5	0	0	0

- Molecule 4 is a DNA chain called DNA (5'-D(*CP*GP*GP*CP*(8OG)P*GP*TP*AP*CP*TP*G)-3').

Mol	Chain	Residues	Atoms					ZeroOcc	AltConf	Trace
			Total	C	N	O	P			
4	T	11	226	107	43	66	10	0	0	0

- Molecule 5 is 2',3'-DIDEOXYCYTIDINE 5'-TRIPHOSPHATE (three-letter code: DCT) (formula: C₉H₁₆N₃O₁₂P₃).



Mol	Chain	Residues	Atoms					ZeroOcc	AltConf
			Total	C	N	O	P		
5	A	1	27	9	3	12	3	0	0

- Molecule 6 is MAGNESIUM ION (three-letter code: MG) (formula: Mg).

Mol	Chain	Residues	Atoms		ZeroOcc	AltConf
			Total	Mg		
6	A	1	1	1	0	0

- Molecule 7 is SODIUM ION (three-letter code: NA) (formula: Na).

Mol	Chain	Residues	Atoms		ZeroOcc	AltConf
			Total	Na		
7	A	2	2	2	0	0

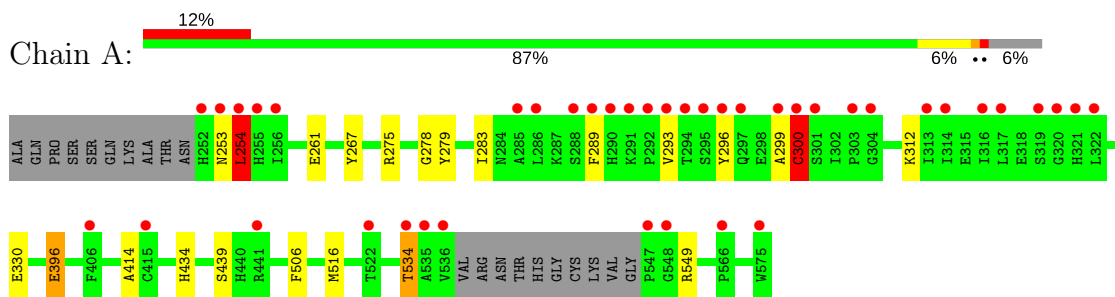
- Molecule 8 is water.

Mol	Chain	Residues	Atoms		ZeroOcc	AltConf
			Total	O		
8	A	307	307	307	0	0
8	D	10	10	10	0	0
8	P	32	32	32	0	0
8	T	60	60	60	0	0

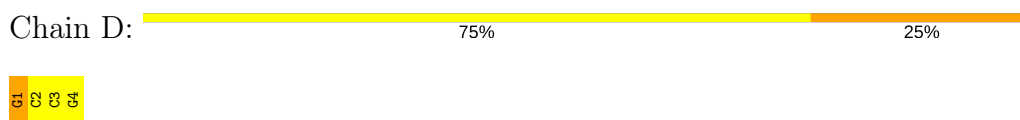
3 Residue-property plots [i](#)

These plots are drawn for all protein, RNA and DNA chains in the entry. The first graphic for a chain summarises the proportions of the various outlier classes displayed in the second graphic. The second graphic shows the sequence view annotated by issues in geometry and electron density. Residues are color-coded according to the number of geometric quality criteria for which they contain at least one outlier: green = 0, yellow = 1, orange = 2 and red = 3 or more. A red dot above a residue indicates a poor fit to the electron density ($RSRZ > 2$). Stretches of 2 or more consecutive residues without any outlier are shown as a green connector. Residues present in the sample, but not in the model, are shown in grey.

- Molecule 1: DNA polymerase lambda



- Molecule 2: DNA (5'-D(P*GP*CP*CP*G)-3')

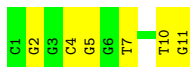


- Molecule 3: DNA (5'-D(*CP*AP*GP*TP*AP*(DOC))-3')



There are no outlier residues recorded for this chain.

- Molecule 4: DNA (5'-D(*CP*GP*GP*CP*(8OG)P*GP*TP*AP*CP*TP*G)-3')



4 Data and refinement statistics

Property	Value	Source
Space group	P 21 21 21	Depositor
Cell constants a, b, c, α , β , γ	55.75Å 62.85Å 140.08Å 90.00° 90.00° 90.00°	Depositor
Resolution (Å)	41.71 – 1.72 41.71 – 1.72	Depositor EDS
% Data completeness (in resolution range)	99.9 (41.71-1.72) 94.0 (41.71-1.72)	Depositor EDS
R_{merge}	(Not available)	Depositor
R_{sym}	(Not available)	Depositor
$\langle I/\sigma(I) \rangle$ ¹	1.94 (at 1.73Å)	Xtrriage
Refinement program	PHENIX 1.9_1692	Depositor
R, R_{free}	0.197 , 0.224 0.199 , 0.224	Depositor DCC
R_{free} test set	2598 reflections (4.93%)	wwPDB-VP
Wilson B-factor (Å ²)	21.6	Xtrriage
Anisotropy	0.572	Xtrriage
Bulk solvent k_{sol} (e/Å ³), B_{sol} (Å ²)	0.34 , 44.9	EDS
L-test for twinning ²	$\langle L \rangle = 0.48$, $\langle L^2 \rangle = 0.32$	Xtrriage
Estimated twinning fraction	No twinning to report.	Xtrriage
F_o, F_c correlation	0.96	EDS
Total number of atoms	3254	wwPDB-VP
Average B, all atoms (Å ²)	33.0	wwPDB-VP

Xtrriage's analysis on translational NCS is as follows: *The largest off-origin peak in the Patterson function is 5.02% of the height of the origin peak. No significant pseudotranslation is detected.*

¹Intensities estimated from amplitudes.

²Theoretical values of $\langle |L| \rangle$, $\langle L^2 \rangle$ for acentric reflections are 0.5, 0.333 respectively for untwinned datasets, and 0.375, 0.2 for perfectly twinned datasets.

5 Model quality [i](#)

5.1 Standard geometry [i](#)

Bond lengths and bond angles in the following residue types are not validated in this section: NA, MG, DOC, DCT, SOG

The Z score for a bond length (or angle) is the number of standard deviations the observed value is removed from the expected value. A bond length (or angle) with $|Z| > 5$ is considered an outlier worth inspection. RMSZ is the root-mean-square of all Z scores of the bond lengths (or angles).

Mol	Chain	Bond lengths		Bond angles	
		RMSZ	# $ Z > 5$	RMSZ	# $ Z > 5$
1	A	0.33	0/2437	0.49	1/3301 (0.0%)
2	D	1.30	1/92 (1.1%)	0.78	0/138
3	P	0.83	0/112	1.02	0/171
4	T	0.86	0/226	1.17	5/345 (1.4%)
All	All	0.48	1/2867 (0.0%)	0.62	6/3955 (0.2%)

All (1) bond length outliers are listed below:

Mol	Chain	Res	Type	Atoms	Z	Observed(Å)	Ideal(Å)
2	D	1	DG	OP3-P	-10.44	1.48	1.61

All (6) bond angle outliers are listed below:

Mol	Chain	Res	Type	Atoms	Z	Observed(°)	Ideal(°)
4	T	7	DT	C1'-O4'-C4'	-6.24	103.86	110.10
1	A	254	LEU	CA-CB-CG	5.86	128.77	115.30
4	T	7	DT	O4'-C1'-N1	5.31	111.72	108.00
4	T	10	DT	O4'-C1'-N1	-5.21	104.35	108.00
4	T	7	DT	O4'-C4'-C3'	-5.21	102.42	104.50
4	T	2	DG	O4'-C1'-N9	5.08	111.55	108.00

There are no chirality outliers.

There are no planarity outliers.

5.2 Too-close contacts [i](#)

In the following table, the Non-H and H(model) columns list the number of non-hydrogen atoms and hydrogen atoms in the chain respectively. The H(added) column lists the number of hydrogen atoms added and optimized by MolProbity. The Clashes column lists the number of clashes within

the asymmetric unit, whereas Symm-Clashes lists symmetry related clashes.

Mol	Chain	Non-H	H(model)	H(added)	Clashes	Symm-Clashes
1	A	2388	0	2305	15	0
2	D	83	0	45	5	0
3	P	118	0	69	0	0
4	T	226	0	125	2	0
5	A	27	0	12	0	0
6	A	1	0	0	0	0
7	A	2	0	0	0	0
8	A	307	0	0	2	0
8	D	10	0	0	0	0
8	P	32	0	0	0	0
8	T	60	0	0	1	0
All	All	3254	0	2556	20	0

The all-atom clashscore is defined as the number of clashes found per 1000 atoms (including hydrogen atoms). The all-atom clashscore for this structure is 4.

All (20) close contacts within the same asymmetric unit are listed below, sorted by their clash magnitude.

Atom-1	Atom-2	Interatomic distance (Å)	Clash overlap (Å)
1:A:261:GLU:HG2	1:A:283:ILE:HD13	1.69	0.72
2:D:3:DC:H2'	2:D:4:DG:C8	2.36	0.60
4:T:11:DG:OP2	8:T:101:HOH:O	2.17	0.58
1:A:312:LYS:NZ	2:D:1:DG:OP3	2.36	0.57
1:A:253:ASN:HB3	1:A:254:LEU:HD13	1.85	0.56
2:D:2:DC:H2'	2:D:3:DC:C6	2.40	0.56
1:A:396:GLU:HG3	1:A:414:ALA:HB2	1.89	0.54
1:A:293:VAL:HG11	1:A:299:ALA:HB2	1.91	0.52
1:A:253:ASN:HB3	1:A:254:LEU:HB3	1.92	0.51
1:A:330:GLU:O	8:A:701:HOH:O	2.20	0.48
2:D:1:DG:H2'	2:D:2:DC:C6	2.51	0.46
1:A:279:TYR:OH	1:A:312:LYS:HE2	2.16	0.45
1:A:253:ASN:CB	1:A:254:LEU:HB3	2.47	0.44
1:A:267:TYR:CE1	1:A:275:ARG:HD2	2.53	0.43
1:A:534:THR:HG23	1:A:549:ARG:H	1.83	0.43
1:A:296:TYR:O	1:A:300:CYS:HB2	2.19	0.43
1:A:434:HIS:CD2	1:A:439:SER:HB2	2.54	0.42
1:A:278:GLY:HA3	2:D:1:DG:H1'	2.01	0.41
4:T:4:DC:H4'	4:T:5:8OG:OP2	2.20	0.41
1:A:396:GLU:OE1	8:A:702:HOH:O	2.22	0.40

There are no symmetry-related clashes.

5.3 Torsion angles [i](#)

5.3.1 Protein backbone [i](#)

In the following table, the Percentiles column shows the percent Ramachandran outliers of the chain as a percentile score with respect to all X-ray entries followed by that with respect to entries of similar resolution.

The Analysed column shows the number of residues for which the backbone conformation was analysed, and the total number of residues.

Mol	Chain	Analysed	Favoured	Allowed	Outliers	Percentiles
1	A	310/334 (93%)	301 (97%)	7 (2%)	2 (1%)	27 11

All (2) Ramachandran outliers are listed below:

Mol	Chain	Res	Type
1	A	300	CYS
1	A	254	LEU

5.3.2 Protein sidechains [i](#)

In the following table, the Percentiles column shows the percent sidechain outliers of the chain as a percentile score with respect to all X-ray entries followed by that with respect to entries of similar resolution.

The Analysed column shows the number of residues for which the sidechain conformation was analysed, and the total number of residues.

Mol	Chain	Analysed	Rotameric	Outliers	Percentiles
1	A	239/280 (85%)	232 (97%)	7 (3%)	45 24

All (7) residues with a non-rotameric sidechain are listed below:

Mol	Chain	Res	Type
1	A	254	LEU
1	A	289	PHE
1	A	300	CYS
1	A	396	GLU
1	A	506	PHE
1	A	516	MET
1	A	534	THR

Some sidechains can be flipped to improve hydrogen bonding and reduce clashes. There are no such sidechains identified.

5.3.3 RNA [i](#)

There are no RNA molecules in this entry.

5.4 Non-standard residues in protein, DNA, RNA chains [i](#)

2 non-standard protein/DNA/RNA residues are modelled in this entry.

In the following table, the Counts columns list the number of bonds (or angles) for which Mogul statistics could be retrieved, the number of bonds (or angles) that are observed in the model and the number of bonds (or angles) that are defined in the Chemical Component Dictionary. The Link column lists molecule types, if any, to which the group is linked. The Z score for a bond length (or angle) is the number of standard deviations the observed value is removed from the expected value. A bond length (or angle) with $|Z| > 2$ is considered an outlier worth inspection. RMSZ is the root-mean-square of all Z scores of the bond lengths (or angles).

Mol	Type	Chain	Res	Link	Bond lengths			Bond angles		
					Counts	RMSZ	# Z > 2	Counts	RMSZ	# Z > 2
3	DOC	P	6	3,4	13,19,20	4.12	10 (76%)	12,26,29	1.45	2 (16%)
4	8OG	T	5	4	17,25,26	5.08	10 (58%)	22,37,40	2.69	7 (31%)

In the following table, the Chirals column lists the number of chiral outliers, the number of chiral centers analysed, the number of these observed in the model and the number defined in the Chemical Component Dictionary. Similar counts are reported in the Torsion and Rings columns. '-' means no outliers of that kind were identified.

Mol	Type	Chain	Res	Link	Chirals	Torsions	Rings
3	DOC	P	6	3,4	-	0/3/18/19	0/2/2/2
4	8OG	T	5	4	-	0/3/21/22	0/3/3/3

All (20) bond length outliers are listed below:

Mol	Chain	Res	Type	Atoms	Z	Observed(Å)	Ideal(Å)
4	T	5	8OG	C3'-C4'	-8.29	1.30	1.53
3	P	6	DOC	C3'-C2'	-7.46	1.33	1.54
3	P	6	DOC	O4'-C4'	-6.58	1.30	1.44
4	T	5	8OG	O4'-C1'	-3.98	1.33	1.42
3	P	6	DOC	C3'-C4'	2.19	1.63	1.52
3	P	6	DOC	C5-C4	2.21	1.46	1.41
3	P	6	DOC	C4-N4	2.22	1.42	1.35

Continued on next page...

Continued from previous page...

Mol	Chain	Res	Type	Atoms	Z	Observed(Å)	Ideal(Å)
4	T	5	8OG	O3'-C3'	2.82	1.49	1.43
4	T	5	8OG	C2-N2	3.55	1.41	1.33
3	P	6	DOC	C4-N3	3.59	1.41	1.35
4	T	5	8OG	C6-C5	4.00	1.48	1.41
3	P	6	DOC	C2-N3	4.03	1.46	1.38
3	P	6	DOC	C6-C5	4.06	1.47	1.38
4	T	5	8OG	C6-N1	4.49	1.41	1.33
4	T	5	8OG	C2-N1	4.79	1.43	1.35
4	T	5	8OG	C4-N3	5.12	1.44	1.35
3	P	6	DOC	O4'-C1'	5.34	1.54	1.42
3	P	6	DOC	C6-N1	5.40	1.43	1.35
4	T	5	8OG	O4'-C4'	7.81	1.62	1.45
4	T	5	8OG	C8-N7	13.34	1.48	1.34

All (9) bond angle outliers are listed below:

Mol	Chain	Res	Type	Atoms	Z	Observed(°)	Ideal(°)
4	T	5	8OG	O4'-C1'-N9	-7.58	100.89	108.09
4	T	5	8OG	N3-C2-N1	-5.61	119.18	127.41
4	T	5	8OG	C5-C6-N1	-3.51	118.48	123.47
4	T	5	8OG	C1'-N9-C4	-2.63	122.10	126.99
3	P	6	DOC	C5-C4-N3	-2.16	119.16	121.69
4	T	5	8OG	C8-N9-C1'	2.65	130.45	125.90
3	P	6	DOC	C3'-C2'-C1'	3.12	106.54	102.80
4	T	5	8OG	C2-N3-C4	3.31	119.02	115.16
4	T	5	8OG	C6-N1-C2	4.23	122.14	116.06

There are no chirality outliers.

There are no torsion outliers.

There are no ring outliers.

1 monomer is involved in 1 short contact:

Mol	Chain	Res	Type	Clashes	Symm-Clashes
4	T	5	8OG	1	0

5.5 Carbohydrates [i](#)

There are no carbohydrates in this entry.

5.6 Ligand geometry [i](#)

Of 4 ligands modelled in this entry, 3 are monoatomic - leaving 1 for Mogul analysis.

In the following table, the Counts columns list the number of bonds (or angles) for which Mogul statistics could be retrieved, the number of bonds (or angles) that are observed in the model and the number of bonds (or angles) that are defined in the Chemical Component Dictionary. The Link column lists molecule types, if any, to which the group is linked. The Z score for a bond length (or angle) is the number of standard deviations the observed value is removed from the expected value. A bond length (or angle) with $|Z| > 2$ is considered an outlier worth inspection. RMSZ is the root-mean-square of all Z scores of the bond lengths (or angles).

Mol	Type	Chain	Res	Link	Bond lengths			Bond angles		
					Counts	RMSZ	# Z > 2	Counts	RMSZ	# Z > 2
5	DCT	A	601	6	22,28,28	3.14	8 (36%)	23,43,43	1.43	4 (17%)

In the following table, the Chirals column lists the number of chiral outliers, the number of chiral centers analysed, the number of these observed in the model and the number defined in the Chemical Component Dictionary. Similar counts are reported in the Torsion and Rings columns. '-' means no outliers of that kind were identified.

Mol	Type	Chain	Res	Link	Chirals	Torsions	Rings
5	DCT	A	601	6	-	0/18/31/31	0/2/2/2

All (8) bond length outliers are listed below:

Mol	Chain	Res	Type	Atoms	Z	Observed(Å)	Ideal(Å)
5	A	601	DCT	C3'-C2'	-7.55	1.32	1.54
5	A	601	DCT	O4'-C4'	-6.55	1.30	1.44
5	A	601	DCT	C5-C4	2.09	1.46	1.41
5	A	601	DCT	C4-N3	2.96	1.40	1.35
5	A	601	DCT	C6-C5	3.94	1.46	1.38
5	A	601	DCT	C2-N3	4.04	1.46	1.38
5	A	601	DCT	O4'-C1'	5.41	1.54	1.42
5	A	601	DCT	C6-N1	5.56	1.43	1.35

All (4) bond angle outliers are listed below:

Mol	Chain	Res	Type	Atoms	Z	Observed(°)	Ideal(°)
5	A	601	DCT	O4'-C1'-C2'	-2.42	104.06	106.67
5	A	601	DCT	PB-O3B-PG	-2.22	125.18	132.63
5	A	601	DCT	C3'-C2'-C1'	2.41	105.69	102.80
5	A	601	DCT	O4'-C1'-N1	4.17	114.80	107.78

There are no chirality outliers.

There are no torsion outliers.

There are no ring outliers.

No monomer is involved in short contacts.

5.7 Other polymers [i](#)

There are no such residues in this entry.

5.8 Polymer linkage issues [i](#)

There are no chain breaks in this entry.

6 Fit of model and data i

6.1 Protein, DNA and RNA chains i

In the following table, the column labelled ‘#RSRZ> 2’ contains the number (and percentage) of RSRZ outliers, followed by percent RSRZ outliers for the chain as percentile scores relative to all X-ray entries and entries of similar resolution. The OWAB column contains the minimum, median, 95th percentile and maximum values of the occupancy-weighted average B-factor per residue. The column labelled ‘Q< 0.9’ lists the number of (and percentage) of residues with an average occupancy less than 0.9.

Mol	Chain	Analysed	<RSRZ>	#RSRZ>2	OWAB(Å ²)	Q<0.9
1	A	314/334 (94%)	0.66	41 (13%) 3 3	18, 31, 61, 82	0
2	D	4/4 (100%)	-0.16	0 100 100	34, 34, 35, 35	0
3	P	5/6 (83%)	-0.14	0 100 100	18, 18, 20, 21	0
4	T	10/11 (90%)	-0.29	0 100 100	20, 24, 36, 36	0
All	All	333/355 (93%)	0.61	41 (12%) 4 4	18, 31, 61, 82	0

All (41) RSRZ outliers are listed below:

Mol	Chain	Res	Type	RSRZ
1	A	289	PHE	10.2
1	A	547	PRO	8.7
1	A	299	ALA	7.2
1	A	293	VAL	7.1
1	A	290	HIS	6.9
1	A	317	LEU	5.9
1	A	295	SER	5.4
1	A	535	ALA	4.9
1	A	296	TYR	4.9
1	A	313	ILE	4.1
1	A	314	ILE	4.1
1	A	288	SER	3.9
1	A	536	VAL	3.9
1	A	294	THR	3.9
1	A	252	HIS	3.7
1	A	301	SER	3.7
1	A	575	TRP	3.7
1	A	319	SER	3.5
1	A	256	ILE	3.4
1	A	286	LEU	3.4
1	A	566	PRO	3.3

Continued on next page...

Continued from previous page...

Mol	Chain	Res	Type	RSRZ
1	A	522	THR	3.3
1	A	321	HIS	3.2
1	A	534	THR	3.1
1	A	303	PRO	3.1
1	A	406	PHE	3.0
1	A	320	GLY	2.9
1	A	254	LEU	2.7
1	A	300	CYS	2.5
1	A	548	GLY	2.5
1	A	292	PRO	2.5
1	A	322	LEU	2.5
1	A	304	GLY	2.4
1	A	297	GLN	2.4
1	A	285	ALA	2.3
1	A	316	ILE	2.2
1	A	253	ASN	2.1
1	A	291	LYS	2.1
1	A	255	HIS	2.1
1	A	415	CYS	2.1
1	A	441	ARG	2.1

6.2 Non-standard residues in protein, DNA, RNA chains [i](#)

In the following table, the Atoms column lists the number of modelled atoms in the group and the number defined in the chemical component dictionary. The B-factors column lists the minimum, median, 95th percentile and maximum values of B factors of atoms in the group. The column labelled 'Q< 0.9' lists the number of atoms with occupancy less than 0.9.

Mol	Type	Chain	Res	Atoms	RSCC	RSR	B-factors(Å ²)	Q<0.9
4	8OG	T	5	23/24	0.92	0.11	20,26,37,38	0
3	DOC	P	6	18/19	0.98	0.15	18,20,21,22	0

6.3 Carbohydrates [i](#)

There are no carbohydrates in this entry.

6.4 Ligands [i](#)

In the following table, the Atoms column lists the number of modelled atoms in the group and the number defined in the chemical component dictionary. The B-factors column lists the minimum,

median, 95th percentile and maximum values of B factors of atoms in the group. The column labelled 'Q< 0.9' lists the number of atoms with occupancy less than 0.9.

Mol	Type	Chain	Res	Atoms	RSCC	RSR	B-factors(Å ²)	Q<0.9
5	DCT	A	601	27/27	0.97	0.13	19,21,24,25	0
7	NA	A	604	1/1	0.98	0.05	32,32,32,32	0
7	NA	A	603	1/1	0.99	0.09	19,19,19,19	0
6	MG	A	602	1/1	0.99	0.16	22,22,22,22	0

6.5 Other polymers [i](#)

There are no such residues in this entry.