



Full wwPDB X-ray Structure Validation Report ⓘ

Aug 29, 2024 – 02:01 PM EDT

PDB ID : 2IMD
Title : Structure of SeMet 2-hydroxychromene-2-carboxylate isomerase (HCCA isomerase)
Authors : Thompson, L.C.; Ladner, J.E.; Codreanu, S.G.; Harp, J.; Gilliland, G.L.; Armstrong, R.N.
Deposited on : 2006-10-04
Resolution : 1.60 Å(reported)

This is a Full wwPDB X-ray Structure Validation Report for a publicly released PDB entry.

We welcome your comments at validation@mail.wwpdb.org

A user guide is available at

<https://www.wwpdb.org/validation/2017/XrayValidationReportHelp>

with specific help available everywhere you see the ⓘ symbol.

The types of validation reports are described at

<http://www.wwpdb.org/validation/2017/FAQs#types>.

The following versions of software and data (see [references ⓘ](#)) were used in the production of this report:

MolProbity : 4.02b-467
Mogul : 2022.3.0, CSD as543be (2022)
Xtriage (Phenix) : 1.20.1
EDS : **FAILED**
buster-report : 1.1.7 (2018)
Percentile statistics : 20231227.v01 (using entries in the PDB archive December 27th 2023)
Ideal geometry (proteins) : Engh & Huber (2001)
Ideal geometry (DNA, RNA) : Parkinson et al. (1996)
Validation Pipeline (wwPDB-VP) : 2.38.3

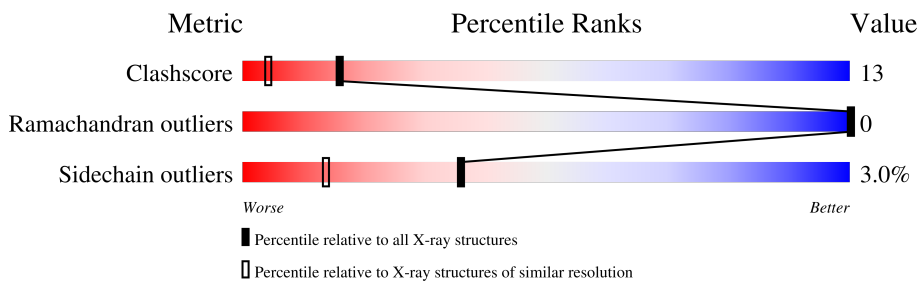
1 Overall quality at a glance

The following experimental techniques were used to determine the structure:

X-RAY DIFFRACTION

The reported resolution of this entry is 1.60 Å.

Percentile scores (ranging between 0-100) for global validation metrics of the entry are shown in the following graphic. The table shows the number of entries on which the scores are based.



Metric	Whole archive (#Entries)	Similar resolution (#Entries, resolution range(Å))
Clashscore	180529	4682 (1.60-1.60)
Ramachandran outliers	177936	4583 (1.60-1.60)
Sidechain outliers	177891	4582 (1.60-1.60)

The table below summarises the geometric issues observed across the polymeric chains and their fit to the electron density. The red, orange, yellow and green segments of the lower bar indicate the fraction of residues that contain outliers for ≥ 3 , 2, 1 and 0 types of geometric quality criteria respectively. A grey segment represents the fraction of residues that are not modelled. The numeric value for each fraction is indicated below the corresponding segment, with a dot representing fractions $\leq 5\%$.

Note EDS failed to run properly.

Mol	Chain	Length	Quality of chain
1	A	203	78% 20% ..

2 Entry composition [i](#)

There are 7 unique types of molecules in this entry. The entry contains 2001 atoms, of which 0 are hydrogens and 0 are deuteriums.

In the tables below, the ZeroOcc column contains the number of atoms modelled with zero occupancy, the AltConf column contains the number of residues with at least one atom in alternate conformation and the Trace column contains the number of residues modelled with at most 2 atoms.

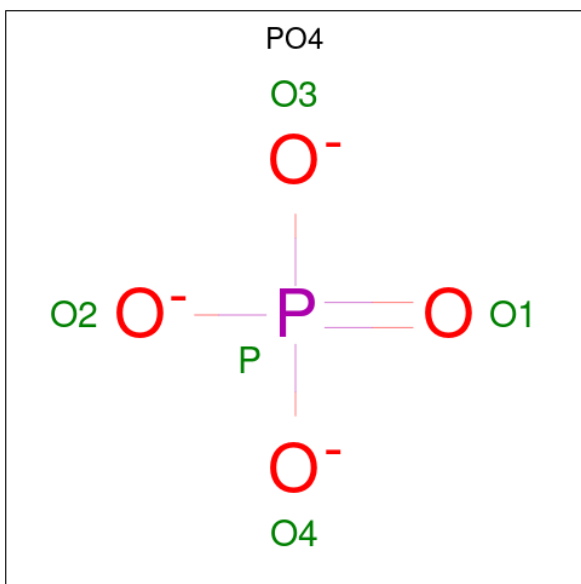
- Molecule 1 is a protein called 2-hydroxychromene-2-carboxylate isomerase.

Mol	Chain	Residues	Atoms						ZeroOcc	AltConf	Trace
			Total	C	N	O	S	Se			
1	A	203	1712	1101	290	309	2	10	0	20	0

There are 6 discrepancies between the modelled and reference sequences:

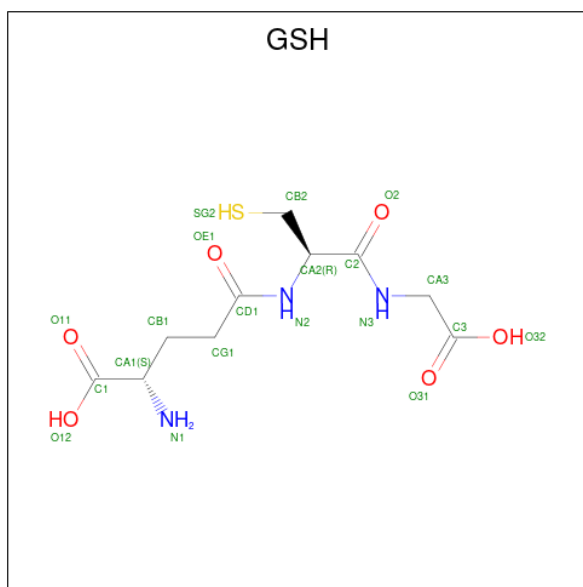
Chain	Residue	Modelled	Actual	Comment	Reference
A	1	MSE	-	INITIATING METHIONINE	UNP Q51948
A	89	MSE	MET	MODIFIED RESIDUE	UNP Q51948
A	171	MSE	MET	MODIFIED RESIDUE	UNP Q51948
A	177	MSE	MET	MODIFIED RESIDUE	UNP Q51948
A	186	MSE	MET	MODIFIED RESIDUE	UNP Q51948
A	191	MSE	MET	MODIFIED RESIDUE	UNP Q51948

- Molecule 2 is PHOSPHATE ION (three-letter code: PO4) (formula: O₄P).



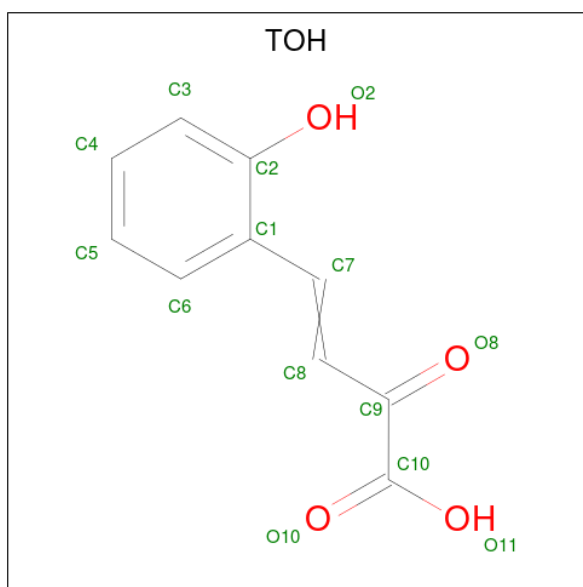
Mol	Chain	Residues	Atoms			ZeroOcc	AltConf
2	A	1	Total	O	P	0	1
			5	4	1		
2	A	1	Total	O	P	0	0
			5	4	1		

- Molecule 3 is GLUTATHIONE (three-letter code: GSH) (formula: C₁₀H₁₇N₃O₆S).



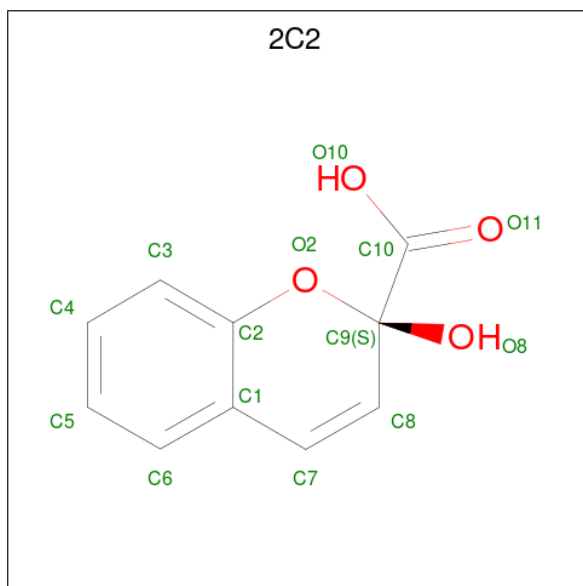
Mol	Chain	Residues	Atoms				ZeroOcc	AltConf	
3	A	1	Total	C	N	O	S	0	1
			22	11	3	6	2		

- Molecule 4 is (3E)-4-(2-HYDROXYPHENYL)-2-OXOBUT-3-ENOIC ACID (three-letter code: TOH) (formula: C₁₀H₈O₄).



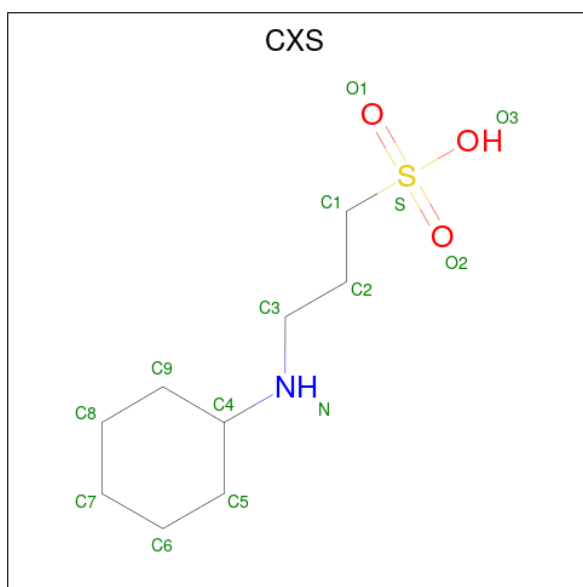
Mol	Chain	Residues	Atoms			ZeroOcc	AltConf
4	A	1	Total	C	O	0	1
			14	10	4		

- Molecule 5 is (2S)-2-HYDROXY-2H-CHROMENE-2-CARBOXYLIC ACID (three-letter code: 2C2) (formula: C₁₀H₈O₄).



Mol	Chain	Residues	Atoms			ZeroOcc	AltConf
5	A	1	Total	C	O	0	1
			14	10	4		

- Molecule 6 is 3-CYCLOHEXYL-1-PROPYLSULFONIC ACID (three-letter code: CXS) (formula: C₉H₁₉NO₃S).



Mol	Chain	Residues	Atoms					ZeroOcc	AltConf
			Total	C	N	O	S		
6	A	1	14	9	1	3	1	0	0

- Molecule 7 is water.

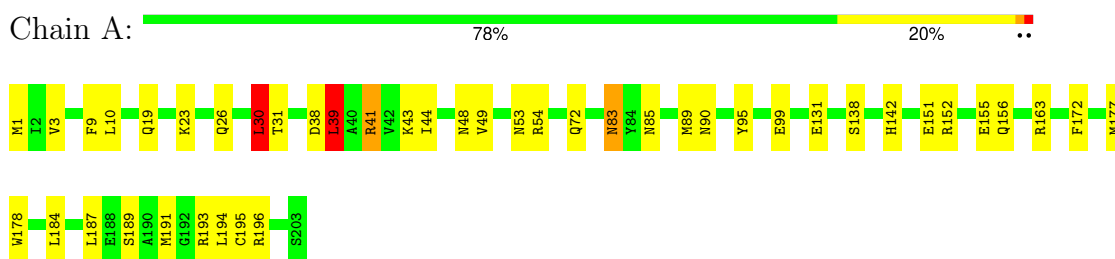
Mol	Chain	Residues	Atoms		ZeroOcc	AltConf
			Total	O		
7	A	215	215	215	0	0

3 Residue-property plots [i](#)

These plots are drawn for all protein, RNA, DNA and oligosaccharide chains in the entry. The first graphic for a chain summarises the proportions of the various outlier classes displayed in the second graphic. The second graphic shows the sequence view annotated by issues in geometry. Residues are color-coded according to the number of geometric quality criteria for which they contain at least one outlier: green = 0, yellow = 1, orange = 2 and red = 3 or more. Stretches of 2 or more consecutive residues without any outlier are shown as a green connector. Residues present in the sample, but not in the model, are shown in grey.

Note EDS failed to run properly.

- Molecule 1: 2-hydroxychromene-2-carboxylate isomerase



4 Data and refinement statistics

EDS failed to run properly - this section is therefore incomplete.

Property	Value	Source
Space group	P 21 21 2	Depositor
Cell constants a, b, c, α , β , γ	71.34Å 76.05Å 38.37Å 90.00° 90.00° 90.00°	Depositor
Resolution (Å)	20.00 – 1.60	Depositor
% Data completeness (in resolution range)	99.9 (20.00-1.60)	Depositor
R_{merge}	0.04	Depositor
R_{sym}	(Not available)	Depositor
$\langle I/\sigma(I) \rangle$ ¹	2.74 (at 1.50Å)	Xtrriage
Refinement program	REFMAC 5.2.0019	Depositor
R, R_{free}	0.187 , 0.226	Depositor
Wilson B-factor (Å ²)	20.9	Xtrriage
Anisotropy	0.492	Xtrriage
L-test for twinning ²	$\langle L \rangle = 0.49$, $\langle L^2 \rangle = 0.32$	Xtrriage
Estimated twinning fraction	No twinning to report.	Xtrriage
Total number of atoms	2001	wwPDB-VP
Average B, all atoms (Å ²)	22.0	wwPDB-VP

Xtrriage's analysis on translational NCS is as follows: *The largest off-origin peak in the Patterson function is 7.30% of the height of the origin peak. No significant pseudotranslation is detected.*

¹Intensities estimated from amplitudes.

²Theoretical values of $\langle |L| \rangle$, $\langle L^2 \rangle$ for acentric reflections are 0.5, 0.333 respectively for untwinned datasets, and 0.375, 0.2 for perfectly twinned datasets.

5 Model quality [i](#)

5.1 Standard geometry [i](#)

Bond lengths and bond angles in the following residue types are not validated in this section: 2C2, GSH, PO4, CXS, TOH

The Z score for a bond length (or angle) is the number of standard deviations the observed value is removed from the expected value. A bond length (or angle) with $|Z| > 5$ is considered an outlier worth inspection. RMSZ is the root-mean-square of all Z scores of the bond lengths (or angles).

Mol	Chain	Bond lengths		Bond angles	
		RMSZ	# Z >5	RMSZ	# Z >5
1	A	0.97	0/1829	0.97	3/2464 (0.1%)

There are no bond length outliers.

All (3) bond angle outliers are listed below:

Mol	Chain	Res	Type	Atoms	Z	Observed(°)	Ideal(°)
1	A	39	LEU	CB-CG-CD2	8.00	124.60	111.00
1	A	30	LEU	CB-CG-CD2	6.84	122.62	111.00
1	A	30	LEU	CA-CB-CG	5.46	127.85	115.30

There are no chirality outliers.

There are no planarity outliers.

5.2 Too-close contacts [i](#)

In the following table, the Non-H and H(model) columns list the number of non-hydrogen atoms and hydrogen atoms in the chain respectively. The H(added) column lists the number of hydrogen atoms added and optimized by MolProbity. The Clashes column lists the number of clashes within the asymmetric unit, whereas Symm-Clashes lists symmetry-related clashes.

Mol	Chain	Non-H	H(model)	H(added)	Clashes	Symm-Clashes
1	A	1712	0	1668	46	1
2	A	10	0	0	0	0
3	A	22	0	8	0	0
4	A	14	0	6	0	0
5	A	14	0	7	1	0
6	A	14	0	19	2	0
7	A	215	0	0	10	1
All	All	2001	0	1708	46	1

The all-atom clashscore is defined as the number of clashes found per 1000 atoms (including hydrogen atoms). The all-atom clashscore for this structure is 13.

All (46) close contacts within the same asymmetric unit are listed below, sorted by their clash magnitude.

Atom-1	Atom-2	Interatomic distance (Å)	Clash overlap (Å)
1:A:19[C]:GLN:NE2	7:A:468:HOH:O	1.71	0.95
1:A:72[D]:GLN:HG2	7:A:446:HOH:O	1.81	0.81
1:A:1[C]:MSE:HE1	1:A:195[C]:CYS:SG	2.26	0.75
1:A:152[C]:ARG:NH1	1:A:156:GLN:HE21	1.89	0.69
1:A:83:ASN:HD22	1:A:85:ASN:H	1.43	0.67
1:A:9:PHE:H	1:A:90:ASN:HD21	1.44	0.64
1:A:195[D]:CYS:SG	7:A:546:HOH:O	2.56	0.60
1:A:152[C]:ARG:HH12	1:A:156:GLN:NE2	2.00	0.58
1:A:152[C]:ARG:NH1	1:A:156:GLN:NE2	2.51	0.58
1:A:193:ARG:HG2	1:A:196:ARG:NH2	2.23	0.54
1:A:187:LEU:O	1:A:191[D]:MSE:HG3	2.08	0.54
1:A:95:TYR:CE1	6:A:312:CXS:H52	2.44	0.53
1:A:10:LEU:C	1:A:10:LEU:HD12	2.30	0.52
1:A:44:ILE:HD13	1:A:49[D]:VAL:HG12	1.91	0.52
1:A:138:SER:O	1:A:142:HIS:HD2	1.92	0.51
1:A:83:ASN:ND2	1:A:85:ASN:H	2.07	0.51
1:A:191[C]:MSE:HE2	7:A:580:HOH:O	2.11	0.49
1:A:1[D]:MSE:HG2	1:A:30:LEU:HD23	1.94	0.49
1:A:194:LEU:HG	7:A:610:HOH:O	2.13	0.49
1:A:41[C]:ARG:CG	1:A:41[C]:ARG:HH11	2.27	0.48
1:A:152[C]:ARG:HH12	1:A:156:GLN:HE21	1.53	0.48
1:A:19[C]:GLN:NE2	1:A:23:LYS:HE2	2.29	0.47
1:A:3:VAL:HG23	1:A:30:LEU:HD21	1.97	0.47
1:A:151:GLU:O	1:A:155:GLU:HG3	2.16	0.46
1:A:178:TRP:CZ3	1:A:187:LEU:HD13	2.50	0.46
1:A:44:ILE:CD1	1:A:49[D]:VAL:HG12	2.45	0.46
1:A:54:ARG:HB3	5:A:305[B]:2C2:O11	2.15	0.46
1:A:44:ILE:HD11	7:A:583:HOH:O	2.15	0.45
1:A:41[C]:ARG:HB2	1:A:41[C]:ARG:NH1	2.32	0.45
1:A:41[C]:ARG:HH11	1:A:41[C]:ARG:HG3	1.83	0.44
1:A:53:ASN:ND2	7:A:602:HOH:O	2.33	0.44
1:A:83:ASN:HD22	1:A:83:ASN:C	2.20	0.43
1:A:138:SER:O	1:A:142:HIS:CD2	2.71	0.43
1:A:189[C]:SER:OG	1:A:193:ARG:NH1	2.52	0.43
1:A:23:LYS:HA	1:A:26:GLN:HG2	1.99	0.43
1:A:38:ASP:OD2	1:A:41[C]:ARG:NH1	2.53	0.42
1:A:31:THR:HG23	1:A:99[C]:GLU:OE2	2.20	0.42

Continued on next page...

Continued from previous page...

Atom-1	Atom-2	Interatomic distance (Å)	Clash overlap (Å)
1:A:41[C]:ARG:NH2	7:A:474:HOH:O	2.52	0.42
1:A:30:LEU:HA	7:A:575:HOH:O	2.20	0.41
1:A:163:ARG:HG2	7:A:526:HOH:O	2.20	0.41
1:A:95:TYR:O	6:A:312:CXS:N	2.54	0.40
1:A:184:LEU:HD23	1:A:184:LEU:HA	1.95	0.40
1:A:39:LEU:HD22	1:A:43:LYS:HG3	2.04	0.40
1:A:172:PHE:CZ	1:A:177:MSE:SE	3.24	0.40

All (1) symmetry-related close contacts are listed below. The label for Atom-2 includes the symmetry operator and encoded unit-cell translations to be applied.

Atom-1	Atom-2	Interatomic distance (Å)	Clash overlap (Å)
1:A:131[D]:GLU:OE2	7:A:463:HOH:O[2_565]	2.13	0.07

5.3 Torsion angles [i](#)

5.3.1 Protein backbone [i](#)

In the following table, the Percentiles column shows the percent Ramachandran outliers of the chain as a percentile score with respect to all X-ray entries followed by that with respect to entries of similar resolution.

The Analysed column shows the number of residues for which the backbone conformation was analysed, and the total number of residues.

Mol	Chain	Analysed	Favoured	Allowed	Outliers	Percentiles
1	A	220/203 (108%)	216 (98%)	4 (2%)	0	100 100

There are no Ramachandran outliers to report.

5.3.2 Protein sidechains [i](#)

In the following table, the Percentiles column shows the percent sidechain outliers of the chain as a percentile score with respect to all X-ray entries followed by that with respect to entries of similar resolution.

The Analysed column shows the number of residues for which the sidechain conformation was analysed, and the total number of residues.

Mol	Chain	Analysed	Rotameric	Outliers	Percentiles
1	A	188/162 (116%)	182 (97%)	6 (3%)	34 12

All (6) residues with a non-rotameric sidechain are listed below:

Mol	Chain	Res	Type
1	A	30	LEU
1	A	39	LEU
1	A	41[C]	ARG
1	A	41[D]	ARG
1	A	48	ASN
1	A	83	ASN

Sometimes sidechains can be flipped to improve hydrogen bonding and reduce clashes. All (6) such sidechains are listed below:

Mol	Chain	Res	Type
1	A	48	ASN
1	A	83	ASN
1	A	90	ASN
1	A	101	GLN
1	A	142	HIS
1	A	156	GLN

5.3.3 RNA [i](#)

There are no RNA molecules in this entry.

5.4 Non-standard residues in protein, DNA, RNA chains [i](#)

There are no non-standard protein/DNA/RNA residues in this entry.

5.5 Carbohydrates [i](#)

There are no oligosaccharides in this entry.

5.6 Ligand geometry [i](#)

7 ligands are modelled in this entry.

In the following table, the Counts columns list the number of bonds (or angles) for which Mogul statistics could be retrieved, the number of bonds (or angles) that are observed in the model and

the number of bonds (or angles) that are defined in the Chemical Component Dictionary. The Link column lists molecule types, if any, to which the group is linked. The Z score for a bond length (or angle) is the number of standard deviations the observed value is removed from the expected value. A bond length (or angle) with $|Z| > 2$ is considered an outlier worth inspection. RMSZ is the root-mean-square of all Z scores of the bond lengths (or angles).

Mol	Type	Chain	Res	Link	Bond lengths			Bond angles		
					Counts	RMSZ	# Z > 2	Counts	RMSZ	# Z > 2
3	GSH	A	301[D]	-	18,19,19	2.37	4 (22%)	21,24,24	1.73	5 (23%)
2	PO4	A	308	-	4,4,4	1.67	0	6,6,6	1.37	1 (16%)
6	CXS	A	312	-	14,14,14	1.87	1 (7%)	18,18,18	2.16	7 (38%)
2	PO4	A	306[C]	-	4,4,4	1.07	0	6,6,6	0.73	0
3	GSH	A	301[C]	-	18,19,19	2.40	4 (22%)	21,24,24	1.68	4 (19%)
4	TOH	A	304[A]	-	13,14,14	1.22	1 (7%)	14,18,18	1.65	2 (14%)
5	2C2	A	305[B]	-	12,15,15	1.22	1 (8%)	16,22,22	1.95	4 (25%)

In the following table, the Chirals column lists the number of chiral outliers, the number of chiral centers analysed, the number of these observed in the model and the number defined in the Chemical Component Dictionary. Similar counts are reported in the Torsion and Rings columns. '2' means no outliers of that kind were identified.

Mol	Type	Chain	Res	Link	Chirals	Torsions	Rings
3	GSH	A	301[D]	-	-	2/24/24/24	-
6	CXS	A	312	-	-	1/8/16/16	0/1/1/1
3	GSH	A	301[C]	-	-	1/24/24/24	-
4	TOH	A	304[A]	-	-	6/9/9/9	0/1/1/1
5	2C2	A	305[B]	-	-	3/3/17/17	0/2/2/2

All (11) bond length outliers are listed below:

Mol	Chain	Res	Type	Atoms	Z	Observed(Å)	Ideal(Å)
3	A	301[C]	GSH	O2-C2	8.17	1.39	1.23
3	A	301[D]	GSH	O2-C2	8.17	1.39	1.23
6	A	312	CXS	C1-S	-6.41	1.68	1.77
3	A	301[C]	GSH	OE1-CD1	4.15	1.31	1.23
3	A	301[D]	GSH	OE1-CD1	4.15	1.31	1.23
4	A	304[A]	TOH	C8-C9	3.38	1.52	1.47
3	A	301[C]	GSH	O11-C1	2.45	1.29	1.22
3	A	301[D]	GSH	O11-C1	2.45	1.29	1.22
3	A	301[C]	GSH	O12-C1	-2.26	1.23	1.30
3	A	301[D]	GSH	O12-C1	-2.26	1.23	1.30
5	A	305[B]	2C2	C7-C8	2.11	1.35	1.33

All (23) bond angle outliers are listed below:

Mol	Chain	Res	Type	Atoms	Z	Observed(°)	Ideal(°)
6	A	312	CXS	C3-N-C4	5.56	124.89	114.18
4	A	304[A]	TOH	C7-C8-C9	-5.15	113.97	121.50
5	A	305[B]	2C2	O11-C10-C9	-4.03	117.65	122.98
5	A	305[B]	2C2	O2-C2-C1	-4.02	117.48	121.17
3	A	301[C]	GSH	CB1-CA1-C1	3.60	119.99	110.45
3	A	301[D]	GSH	CB1-CA1-C1	3.60	119.99	110.45
3	A	301[C]	GSH	CG1-CB1-CA1	3.24	121.31	113.86
3	A	301[D]	GSH	CG1-CB1-CA1	3.24	121.31	113.86
5	A	305[B]	2C2	O2-C2-C3	3.14	121.36	116.60
6	A	312	CXS	C6-C5-C4	3.11	116.66	111.09
3	A	301[D]	GSH	CA2-CB2-SG2	-3.04	110.73	114.16
6	A	312	CXS	C7-C8-C9	2.82	117.21	111.42
6	A	312	CXS	C7-C6-C5	2.77	117.11	111.42
2	A	308	PO4	O4-P-O1	-2.63	101.66	110.95
3	A	301[C]	GSH	CA3-N3-C2	-2.58	114.88	121.38
3	A	301[D]	GSH	CA3-N3-C2	-2.58	114.88	121.38
4	A	304[A]	TOH	C1-C7-C8	-2.54	121.92	126.91
3	A	301[C]	GSH	O32-C3-CA3	2.54	122.46	112.81
3	A	301[D]	GSH	O32-C3-CA3	2.54	122.46	112.81
6	A	312	CXS	O2-S-C1	2.45	110.43	106.73
5	A	305[B]	2C2	C9-C8-C7	-2.44	117.20	121.34
6	A	312	CXS	O1-S-C1	2.41	110.38	106.73
6	A	312	CXS	C8-C9-C4	2.18	115.00	111.09

There are no chirality outliers.

All (13) torsion outliers are listed below:

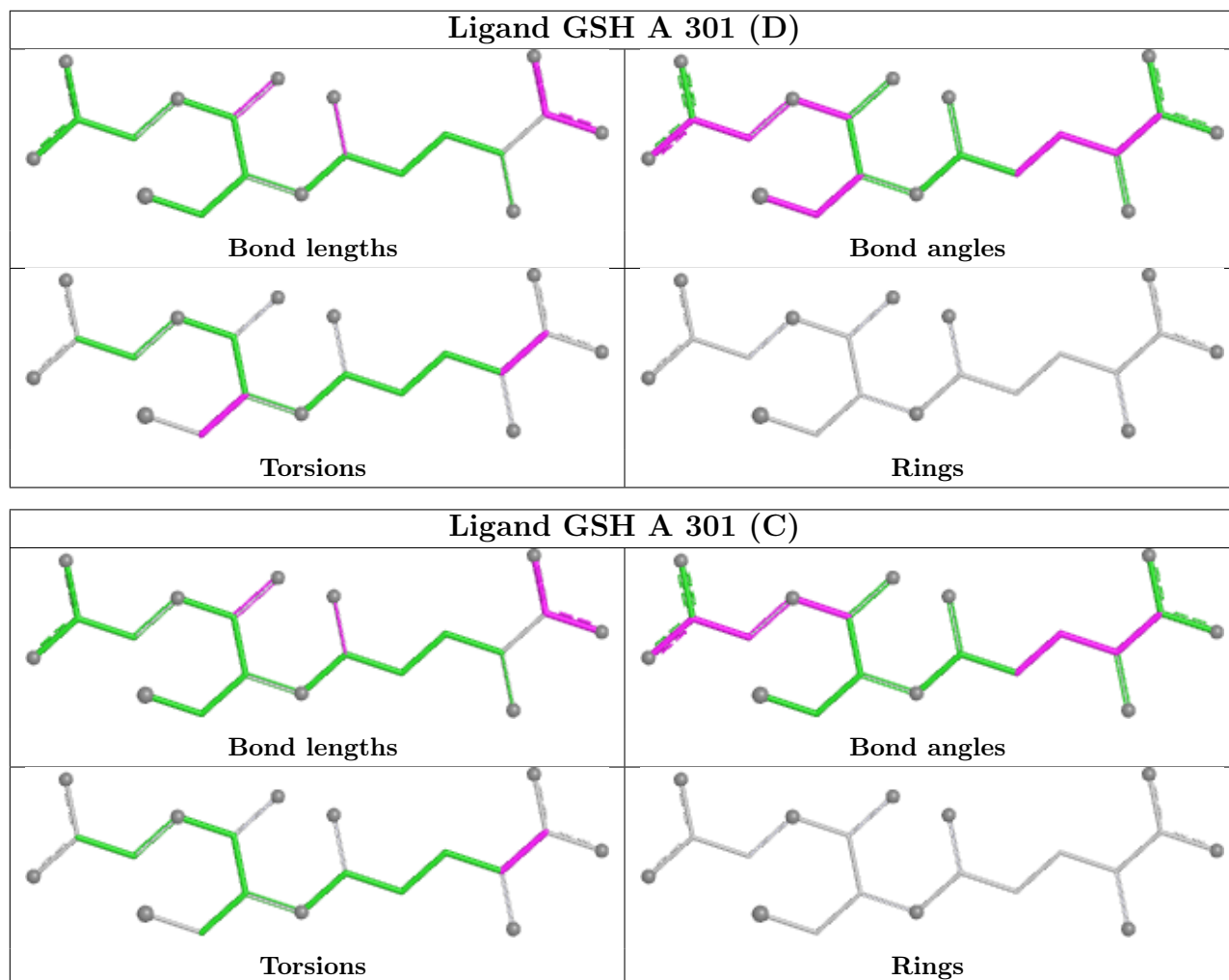
Mol	Chain	Res	Type	Atoms
4	A	304[A]	TOH	O10-C10-C9-C8
4	A	304[A]	TOH	C1-C7-C8-C9
5	A	305[B]	2C2	O11-C10-C9-O2
5	A	305[B]	2C2	O11-C10-C9-C8
6	A	312	CXS	C5-C4-N-C3
5	A	305[B]	2C2	O11-C10-C9-O8
4	A	304[A]	TOH	C7-C8-C9-C10
3	A	301[C]	GSH	O11-C1-CA1-CB1
3	A	301[D]	GSH	O11-C1-CA1-CB1
4	A	304[A]	TOH	O11-C10-C9-C8
4	A	304[A]	TOH	C7-C8-C9-O8
4	A	304[A]	TOH	O10-C10-C9-O8
3	A	301[D]	GSH	C2-CA2-CB2-SG2

There are no ring outliers.

2 monomers are involved in 3 short contacts:

Mol	Chain	Res	Type	Clashes	Symm-Clashes
6	A	312	CXS	2	0
5	A	305[B]	2C2	1	0

The following is a two-dimensional graphical depiction of Mogul quality analysis of bond lengths, bond angles, torsion angles, and ring geometry for all instances of the Ligand of Interest. In addition, ligands with molecular weight > 250 and outliers as shown on the validation Tables will also be included. For torsion angles, if less than 5% of the Mogul distribution of torsion angles is within 10 degrees of the torsion angle in question, then that torsion angle is considered an outlier. Any bond that is central to one or more torsion angles identified as an outlier by Mogul will be highlighted in the graph. For rings, the root-mean-square deviation (RMSD) between the ring in question and similar rings identified by Mogul is calculated over all ring torsion angles. If the average RMSD is greater than 60 degrees and the minimal RMSD between the ring in question and any Mogul-identified rings is also greater than 60 degrees, then that ring is considered an outlier. The outliers are highlighted in purple. The color gray indicates Mogul did not find sufficient equivalents in the CSD to analyse the geometry.



5.7 Other polymers [i](#)

There are no such residues in this entry.

5.8 Polymer linkage issues [i](#)

There are no chain breaks in this entry.

6 Fit of model and data

6.1 Protein, DNA and RNA chains

EDS failed to run properly - this section is therefore empty.

6.2 Non-standard residues in protein, DNA, RNA chains

EDS failed to run properly - this section is therefore empty.

6.3 Carbohydrates

EDS failed to run properly - this section is therefore empty.

6.4 Ligands

EDS failed to run properly - this section is therefore empty.

6.5 Other polymers

EDS failed to run properly - this section is therefore empty.