



Full wwPDB X-ray Structure Validation Report ⓘ

Mar 8, 2018 – 11:43 pm GMT

PDB ID : 5IQG
Title : Aminoglycoside Phosphotransferase (2'')-Ia (CTD of AAC(6')-Ie/APH(2'')-Ia) in complex with GDP, Magnesium, and Gentamicin C1
Authors : Caldwell, S.J.; Berghuis, A.M.
Deposited on : 2016-03-10
Resolution : 2.50 Å(reported)

This is a Full wwPDB X-ray Structure Validation Report for a publicly released PDB entry.

We welcome your comments at validation@mail.wwpdb.org

A user guide is available at

<https://www.wwpdb.org/validation/2017/XrayValidationReportHelp>

with specific help available everywhere you see the ⓘ symbol.

The following versions of software and data (see [references ⓘ](#)) were used in the production of this report:

MolProbity : 4.02b-467
Mogul : 1.7.3 (157068), CSD as539be (2018)
Xtriage (Phenix) : 1.13
EDS : trunk30967
Percentile statistics : 20171227.v01 (using entries in the PDB archive December 27th 2017)
Refmac : 5.8.0158
CCP4 : 7.0 (Gargrove)
Ideal geometry (proteins) : Engh & Huber (2001)
Ideal geometry (DNA, RNA) : Parkinson et al. (1996)
Validation Pipeline (wwPDB-VP) : trunk30967

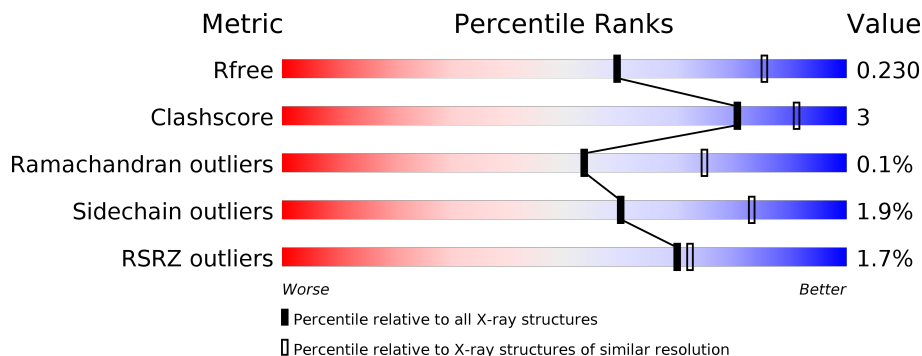
1 Overall quality at a glance

The following experimental techniques were used to determine the structure:

X-RAY DIFFRACTION

The reported resolution of this entry is 2.50 Å.

Percentile scores (ranging between 0-100) for global validation metrics of the entry are shown in the following graphic. The table shows the number of entries on which the scores are based.



Metric	Whole archive (#Entries)	Similar resolution (#Entries, resolution range(Å))
R_{free}	111664	4155 (2.50-2.50)
Clashscore	122126	4827 (2.50-2.50)
Ramachandran outliers	120053	4735 (2.50-2.50)
Sidechain outliers	120020	4737 (2.50-2.50)
RSRZ outliers	108989	4058 (2.50-2.50)

The table below summarises the geometric issues observed across the polymeric chains and their fit to the electron density. The red, orange, yellow and green segments on the lower bar indicate the fraction of residues that contain outliers for ≥ 3 , 2, 1 and 0 types of geometric quality criteria. A grey segment represents the fraction of residues that are not modelled. The numeric value for each fraction is indicated below the corresponding segment, with a dot representing fractions $\leq 5\%$. The upper red bar (where present) indicates the fraction of residues that have poor fit to the electron density. The numeric value is given above the bar.

Mol	Chain	Length	Quality of chain
1	A	305	<p>2% 88% 8%</p>
1	B	305	<p>0% 90% 6% 5%</p>
1	C	305	<p>0% 89% 8%</p>
1	D	305	<p>2% 92% 6%</p>

2 Entry composition [i](#)

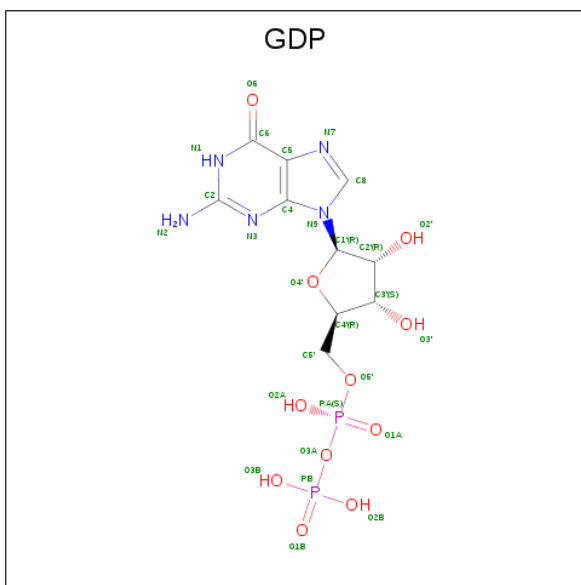
There are 6 unique types of molecules in this entry. The entry contains 10305 atoms, of which 0 are hydrogens and 0 are deuteriums.

In the tables below, the ZeroOcc column contains the number of atoms modelled with zero occupancy, the AltConf column contains the number of residues with at least one atom in alternate conformation and the Trace column contains the number of residues modelled with at most 2 atoms.

- Molecule 1 is a protein called Bifunctional AAC/APH.

Mol	Chain	Residues	Atoms					ZeroOcc	AltConf	Trace
			Total	C	N	O	S			
1	A	292	Total 2403	C 1535	N 374	O 484	S 10	0	0	0
1	B	290	Total 2393	C 1529	N 372	O 482	S 10	0	0	0
1	C	293	Total 2418	C 1544	N 375	O 489	S 10	0	0	0
1	D	301	Total 2469	C 1574	N 383	O 502	S 10	0	0	0

- Molecule 2 is GUANOSINE-5'-DIPHOSPHATE (three-letter code: GDP) (formula: C₁₀H₁₅N₅O₁₁P₂).



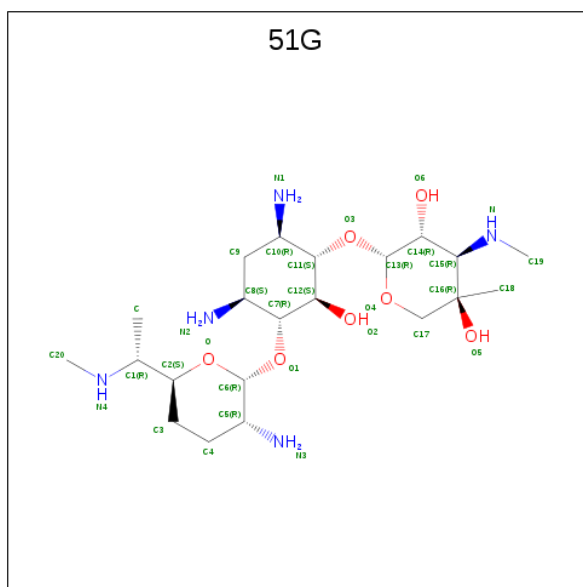
Mol	Chain	Residues	Atoms				ZeroOcc	AltConf	
			Total	C	N	O			P
2	A	1	Total 28	C 10	N 5	O 11	P 2	0	0
2	B	1	Total 28	C 10	N 5	O 11	P 2	0	0

Continued on next page...

Continued from previous page...

Mol	Chain	Residues	Atoms				ZeroOcc	AltConf	
2	C	1	Total	C	N	O	P	0	0
			28	10	5	11	2		
2	D	1	Total	C	N	O	P	0	0
			28	10	5	11	2		

- Molecule 3 is gentamicin C1 (three-letter code: 51G) (formula: $C_{21}H_{43}N_5O_7$).



Mol	Chain	Residues	Atoms				ZeroOcc	AltConf
3	A	1	Total	C	N	O	0	0
			33	21	5	7		
3	B	1	Total	C	N	O	0	0
			33	21	5	7		
3	C	1	Total	C	N	O	0	0
			33	21	5	7		
3	D	1	Total	C	N	O	0	0
			33	21	5	7		

- Molecule 4 is MAGNESIUM ION (three-letter code: MG) (formula: Mg).

Mol	Chain	Residues	Atoms		ZeroOcc	AltConf
4	B	2	Total	Mg	0	0
			2	2		
4	A	2	Total	Mg	0	0
			2	2		
4	D	2	Total	Mg	0	0
			2	2		

Continued on next page...

Continued from previous page...

Mol	Chain	Residues	Atoms		ZeroOcc	AltConf
4	C	2	Total	Mg	0	0
			2	2		

- Molecule 5 is CHLORIDE ION (three-letter code: CL) (formula: Cl).

Mol	Chain	Residues	Atoms		ZeroOcc	AltConf
5	B	1	Total	Cl	0	0
			1	1		
5	A	1	Total	Cl	0	0
			1	1		
5	C	1	Total	Cl	0	0
			1	1		

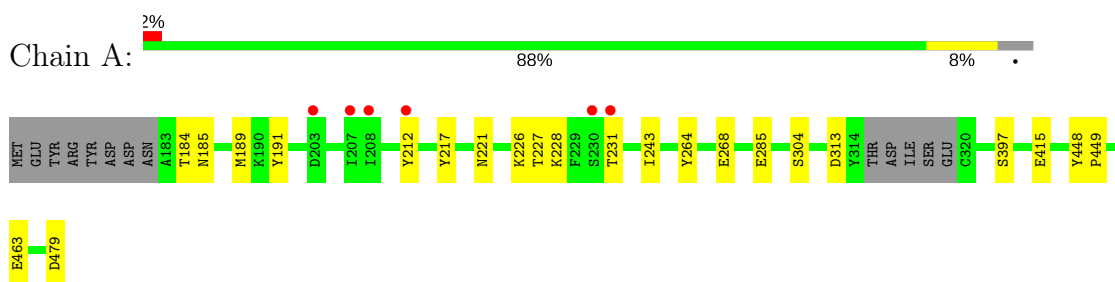
- Molecule 6 is water.

Mol	Chain	Residues	Atoms		ZeroOcc	AltConf
6	A	92	Total	O	0	0
			92	92		
6	B	108	Total	O	0	0
			108	108		
6	C	92	Total	O	0	0
			92	92		
6	D	75	Total	O	0	0
			75	75		

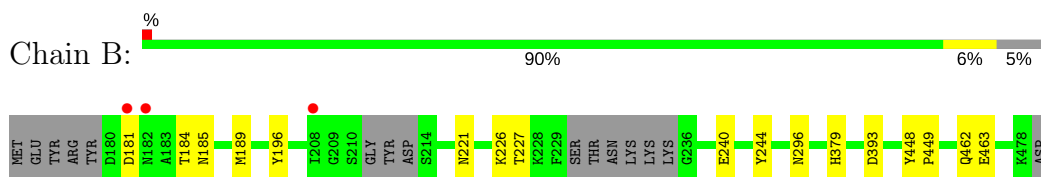
3 Residue-property plots [i](#)

These plots are drawn for all protein, RNA and DNA chains in the entry. The first graphic for a chain summarises the proportions of the various outlier classes displayed in the second graphic. The second graphic shows the sequence view annotated by issues in geometry and electron density. Residues are color-coded according to the number of geometric quality criteria for which they contain at least one outlier: green = 0, yellow = 1, orange = 2 and red = 3 or more. A red dot above a residue indicates a poor fit to the electron density ($RSRZ > 2$). Stretches of 2 or more consecutive residues without any outlier are shown as a green connector. Residues present in the sample, but not in the model, are shown in grey.

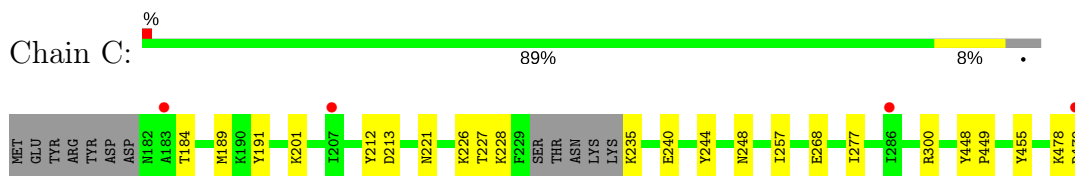
- Molecule 1: Bifunctional AAC/APH



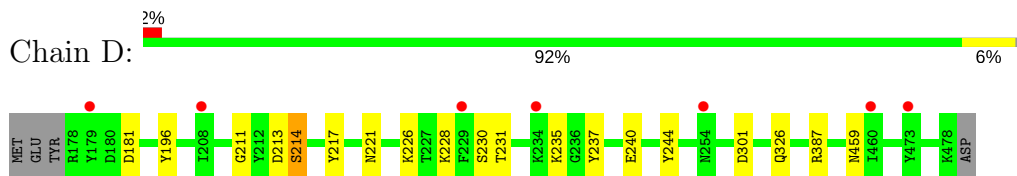
- Molecule 1: Bifunctional AAC/APH



- Molecule 1: Bifunctional AAC/APH



- Molecule 1: Bifunctional AAC/APH



4 Data and refinement statistics i

Property	Value	Source
Space group	P 1 21 1	Depositor
Cell constants a, b, c, α , β , γ	90.26Å 98.48Å 93.02Å 90.00° 105.26° 90.00°	Depositor
Resolution (Å)	89.74 – 2.50 55.61 – 2.50	Depositor EDS
% Data completeness (in resolution range)	99.8 (89.74-2.50) 99.9 (55.61-2.50)	Depositor EDS
R_{merge}	0.08	Depositor
R_{sym}	(Not available)	Depositor
$\langle I/\sigma(I) \rangle$ ¹	1.88 (at 2.51Å)	Xtrriage
Refinement program	REFMAC 5.8.0073	Depositor
R, R_{free}	0.189 , 0.230 0.193 , 0.230	Depositor DCC
R_{free} test set	2735 reflections (5.03%)	wwPDB-VP
Wilson B-factor (Å ²)	53.3	Xtrriage
Anisotropy	0.304	Xtrriage
Bulk solvent k_{sol} (e/Å ³), B_{sol} (Å ²)	0.33 , 37.5	EDS
L-test for twinning ²	$\langle L \rangle = 0.50$, $\langle L^2 \rangle = 0.33$	Xtrriage
Estimated twinning fraction	0.017 for l,-k,h	Xtrriage
F_o, F_c correlation	0.96	EDS
Total number of atoms	10305	wwPDB-VP
Average B, all atoms (Å ²)	62.0	wwPDB-VP

Xtrriage's analysis on translational NCS is as follows: *The largest off-origin peak in the Patterson function is 3.36% of the height of the origin peak. No significant pseudotranslation is detected.*

¹Intensities estimated from amplitudes.

²Theoretical values of $\langle |L| \rangle$, $\langle L^2 \rangle$ for acentric reflections are 0.5, 0.333 respectively for untwinned datasets, and 0.375, 0.2 for perfectly twinned datasets.

5 Model quality [i](#)

5.1 Standard geometry [i](#)

Bond lengths and bond angles in the following residue types are not validated in this section: GDP, MG, 51G, CL

The Z score for a bond length (or angle) is the number of standard deviations the observed value is removed from the expected value. A bond length (or angle) with $|Z| > 5$ is considered an outlier worth inspection. RMSZ is the root-mean-square of all Z scores of the bond lengths (or angles).

Mol	Chain	Bond lengths		Bond angles	
		RMSZ	# Z >5	RMSZ	# Z >5
1	A	0.70	0/2446	0.77	0/3297
1	B	0.71	0/2434	0.76	0/3280
1	C	0.73	0/2461	0.82	0/3317
1	D	0.67	0/2514	0.74	0/3395
All	All	0.70	0/9855	0.77	0/13289

There are no bond length outliers.

There are no bond angle outliers.

There are no chirality outliers.

There are no planarity outliers.

5.2 Too-close contacts [i](#)

In the following table, the Non-H and H(model) columns list the number of non-hydrogen atoms and hydrogen atoms in the chain respectively. The H(added) column lists the number of hydrogen atoms added and optimized by MolProbity. The Clashes column lists the number of clashes within the asymmetric unit, whereas Symm-Clashes lists symmetry related clashes.

Mol	Chain	Non-H	H(model)	H(added)	Clashes	Symm-Clashes
1	A	2403	0	2311	16	0
1	B	2393	0	2311	11	0
1	C	2418	0	2328	12	0
1	D	2469	0	2355	11	0
2	A	28	0	12	6	0
2	B	28	0	12	1	0
2	C	28	0	12	2	0
2	D	28	0	12	1	0
3	A	33	0	0	3	0

Continued on next page...

Continued from previous page...

Mol	Chain	Non-H	H(model)	H(added)	Clashes	Symm-Clashes
3	B	33	0	0	0	0
3	C	33	0	0	2	0
3	D	33	0	0	0	0
4	A	2	0	0	0	0
4	B	2	0	0	0	0
4	C	2	0	0	0	0
4	D	2	0	0	0	0
5	A	1	0	0	0	0
5	B	1	0	0	1	0
5	C	1	0	0	0	0
6	A	92	0	0	5	0
6	B	108	0	0	3	0
6	C	92	0	0	2	0
6	D	75	0	0	1	0
All	All	10305	0	9353	56	0

The all-atom clashscore is defined as the number of clashes found per 1000 atoms (including hydrogen atoms). The all-atom clashscore for this structure is 3.

All (56) close contacts within the same asymmetric unit are listed below, sorted by their clash magnitude.

Atom-1	Atom-2	Interatomic distance (Å)	Clash overlap (Å)
2:C:500:GDP:H5'	2:C:500:GDP:H8	1.35	0.90
1:D:214:SER:OG	1:D:237:TYR:OH	1.92	0.83
1:C:248:ASN:OD1	6:C:1144:HOH:O	1.97	0.80
1:D:214:SER:HG	1:D:237:TYR:HH	1.19	0.79
1:A:415:GLU:OE2	3:A:600:51G:N4	2.22	0.73
2:C:500:GDP:H5'	2:C:500:GDP:C8	2.22	0.73
1:B:296:ASN:HB2	6:B:1097:HOH:O	1.90	0.72
1:A:415:GLU:OE2	3:A:600:51G:C20	2.40	0.70
1:C:201:LYS:NZ	6:C:1407:HOH:O	2.24	0.69
3:C:600:51G:O4	3:C:600:51G:O2	2.11	0.68
1:D:326:GLN:NE2	6:D:1013:HOH:O	2.28	0.66
2:A:500:GDP:H8	2:A:500:GDP:C5'	2.08	0.65
1:A:189:MET:HG2	1:A:217:TYR:CE2	2.33	0.62
1:D:211:GLY:HA3	2:D:500:GDP:O2B	2.01	0.61
2:A:500:GDP:H5'	2:A:500:GDP:C8	2.36	0.60
2:A:500:GDP:C8	2:A:500:GDP:C5'	2.85	0.60
1:B:379:HIS:CE1	6:B:901:HOH:O	2.55	0.60
3:A:600:51G:O4	3:A:600:51G:O2	2.20	0.60
1:A:189:MET:HG2	1:A:217:TYR:CD2	2.38	0.58

Continued on next page...

Continued from previous page...

Atom-1	Atom-2	Interatomic distance (Å)	Clash overlap (Å)
1:B:189:MET:SD	1:B:227:THR:HG21	2.44	0.58
1:A:184:THR:HB	1:B:185:ASN:OD1	2.04	0.58
1:B:463:GLU:HB3	6:B:1001:HOH:O	2.04	0.57
1:C:478:LYS:O	1:C:479:ASP:HB2	2.07	0.55
1:A:191:TYR:HH	1:B:196:TYR:HH	1.08	0.54
2:A:500:GDP:H5'	2:A:500:GDP:H8	1.71	0.53
1:A:189:MET:SD	1:A:227:THR:HG21	2.49	0.52
1:D:228:LYS:HB2	1:D:237:TYR:CZ	2.46	0.51
2:A:500:GDP:H8	2:A:500:GDP:H5''	1.76	0.50
1:D:213:ASP:HA	1:D:230:SER:HB3	1.94	0.50
1:A:228:LYS:NZ	1:A:231:THR:HG21	2.29	0.47
1:B:393:ASP:HB2	2:B:500:GDP:O1A	2.15	0.47
1:C:240:GLU:HG2	1:C:244:TYR:CE2	2.50	0.47
1:C:478:LYS:O	1:C:479:ASP:CB	2.62	0.47
1:C:189:MET:SD	1:C:227:THR:HG21	2.56	0.46
1:C:212:TYR:HE2	1:C:455:TYR:HH	1.64	0.46
1:C:184:THR:HG21	1:D:217:TYR:OH	2.16	0.45
1:A:185:ASN:OD1	1:B:184:THR:HB	2.17	0.44
2:A:500:GDP:O2'	6:A:1093:HOH:O	2.21	0.44
1:C:448:TYR:HB3	1:C:449:PRO:HD3	2.00	0.44
6:A:1295:HOH:O	1:C:235:LYS:HA	2.17	0.44
1:B:448:TYR:HB3	1:B:449:PRO:HD3	1.99	0.43
1:A:264:TYR:HA	6:A:1108:HOH:O	2.17	0.43
1:B:240:GLU:HG2	1:B:244:TYR:CE2	2.54	0.43
1:D:240:GLU:HG2	1:D:244:TYR:CE2	2.53	0.43
3:C:600:51G:O2	3:C:600:51G:C6	2.66	0.43
1:A:285:GLU:HB3	6:A:1146:HOH:O	2.18	0.43
1:A:448:TYR:HB3	1:A:449:PRO:HD3	2.00	0.43
1:D:301:ASP:OD1	1:D:387:ARG:NH2	2.51	0.42
1:A:313:ASP:HA	6:A:966:HOH:O	2.19	0.42
1:B:462:GLN:NE2	5:B:802:CL:CL	2.88	0.41
1:C:191:TYR:CZ	1:D:196:TYR:OH	2.55	0.41
1:D:231:THR:HG22	1:D:459:ASN:OD1	2.20	0.41
1:A:243:ILE:HD13	1:A:397:SER:HB2	2.04	0.40
1:A:228:LYS:HE2	1:A:231:THR:OG1	2.22	0.40
1:A:228:LYS:CE	1:A:231:THR:HG21	2.52	0.40
1:C:257:ILE:C	1:C:277:ILE:HD11	2.42	0.40

There are no symmetry-related clashes.

5.3 Torsion angles [i](#)

5.3.1 Protein backbone [i](#)

In the following table, the Percentiles column shows the percent Ramachandran outliers of the chain as a percentile score with respect to all X-ray entries followed by that with respect to entries of similar resolution.

The Analysed column shows the number of residues for which the backbone conformation was analysed, and the total number of residues.

Mol	Chain	Analysed	Favoured	Allowed	Outliers	Percentiles	
1	A	288/305 (94%)	276 (96%)	12 (4%)	0	100	100
1	B	284/305 (93%)	272 (96%)	12 (4%)	0	100	100
1	C	289/305 (95%)	278 (96%)	11 (4%)	0	100	100
1	D	299/305 (98%)	286 (96%)	12 (4%)	1 (0%)	43	64
All	All	1160/1220 (95%)	1112 (96%)	47 (4%)	1 (0%)	53	75

All (1) Ramachandran outliers are listed below:

Mol	Chain	Res	Type
1	D	235	LYS

5.3.2 Protein sidechains [i](#)

In the following table, the Percentiles column shows the percent sidechain outliers of the chain as a percentile score with respect to all X-ray entries followed by that with respect to entries of similar resolution.

The Analysed column shows the number of residues for which the sidechain conformation was analysed, and the total number of residues.

Mol	Chain	Analysed	Rotameric	Outliers	Percentiles	
1	A	265/281 (94%)	258 (97%)	7 (3%)	49	76
1	B	266/281 (95%)	263 (99%)	3 (1%)	76	91
1	C	268/281 (95%)	262 (98%)	6 (2%)	55	80
1	D	272/281 (97%)	268 (98%)	4 (2%)	67	87
All	All	1071/1124 (95%)	1051 (98%)	20 (2%)	60	83

All (20) residues with a non-rotameric sidechain are listed below:

Mol	Chain	Res	Type
1	A	212	TYR
1	A	221	ASN
1	A	226	LYS
1	A	268	GLU
1	A	304	SER
1	A	463	GLU
1	A	479	ASP
1	B	181	ASP
1	B	221	ASN
1	B	226	LYS
1	C	213	ASP
1	C	221	ASN
1	C	226	LYS
1	C	228	LYS
1	C	268	GLU
1	C	300	ARG
1	D	181	ASP
1	D	214	SER
1	D	221	ASN
1	D	226	LYS

Some sidechains can be flipped to improve hydrogen bonding and reduce clashes. All (8) such sidechains are listed below:

Mol	Chain	Res	Type
1	A	341	ASN
1	A	467	ASN
1	B	420	ASN
1	B	467	ASN
1	C	245	ASN
1	C	341	ASN
1	D	295	GLN
1	D	420	ASN

5.3.3 RNA [i](#)

There are no RNA molecules in this entry.

5.4 Non-standard residues in protein, DNA, RNA chains [i](#)

There are no non-standard protein/DNA/RNA residues in this entry.

5.5 Carbohydrates [i](#)

There are no carbohydrates in this entry.

5.6 Ligand geometry [i](#)

Of 19 ligands modelled in this entry, 11 are monoatomic - leaving 8 for Mogul analysis.

In the following table, the Counts columns list the number of bonds (or angles) for which Mogul statistics could be retrieved, the number of bonds (or angles) that are observed in the model and the number of bonds (or angles) that are defined in the Chemical Component Dictionary. The Link column lists molecule types, if any, to which the group is linked. The Z score for a bond length (or angle) is the number of standard deviations the observed value is removed from the expected value. A bond length (or angle) with $|Z| > 2$ is considered an outlier worth inspection. RMSZ is the root-mean-square of all Z scores of the bond lengths (or angles).

Mol	Type	Chain	Res	Link	Bond lengths			Bond angles		
					Counts	RMSZ	# Z > 2	Counts	RMSZ	# Z > 2
2	GDP	A	500	4	25,30,30	1.57	2 (8%)	27,47,47	2.37	6 (22%)
3	51G	A	600	-	30,35,35	0.24	0	33,52,52	1.54	3 (9%)
2	GDP	B	500	4	25,30,30	1.67	4 (16%)	27,47,47	2.31	7 (25%)
3	51G	B	600	-	30,35,35	0.28	0	33,52,52	2.09	5 (15%)
2	GDP	C	500	4	25,30,30	1.23	2 (8%)	27,47,47	2.49	6 (22%)
3	51G	C	600	-	30,35,35	0.22	0	33,52,52	2.09	4 (12%)
2	GDP	D	500	4	25,30,30	1.16	4 (16%)	27,47,47	2.29	4 (14%)
3	51G	D	600	-	30,35,35	0.30	0	33,52,52	1.71	4 (12%)

In the following table, the Chirals column lists the number of chiral outliers, the number of chiral centers analysed, the number of these observed in the model and the number defined in the Chemical Component Dictionary. Similar counts are reported in the Torsion and Rings columns. '-' means no outliers of that kind were identified.

Mol	Type	Chain	Res	Link	Chirals	Torsions	Rings
2	GDP	A	500	4	-	0/12/32/32	0/3/3/3
3	51G	A	600	-	-	0/15/69/69	0/3/3/3
2	GDP	B	500	4	-	0/12/32/32	0/3/3/3
3	51G	B	600	-	-	0/15/69/69	0/3/3/3
2	GDP	C	500	4	-	0/12/32/32	0/3/3/3
3	51G	C	600	-	-	0/15/69/69	0/3/3/3
2	GDP	D	500	4	-	0/12/32/32	0/3/3/3
3	51G	D	600	-	-	0/15/69/69	0/3/3/3

All (12) bond length outliers are listed below:

Mol	Chain	Res	Type	Atoms	Z	Observed(Å)	Ideal(Å)
2	A	500	GDP	PB-O1B	-6.20	1.29	1.50
2	C	500	GDP	PB-O2B	-3.36	1.41	1.54
2	B	500	GDP	PB-O2B	-2.83	1.43	1.54
2	D	500	GDP	C8-N7	-2.08	1.30	1.34
2	D	500	GDP	PB-O2B	-2.03	1.46	1.54
2	D	500	GDP	C6-N1	2.54	1.37	1.33
2	B	500	GDP	C6-N1	2.73	1.38	1.33
2	D	500	GDP	C6-C5	2.80	1.46	1.41
2	A	500	GDP	C6-N1	3.06	1.38	1.33
2	C	500	GDP	C6-N1	3.07	1.38	1.33
2	B	500	GDP	PA-O1A	4.47	1.67	1.50
2	B	500	GDP	PB-O1B	4.54	1.65	1.50

All (39) bond angle outliers are listed below:

Mol	Chain	Res	Type	Atoms	Z	Observed(°)	Ideal(°)
2	C	500	GDP	C5-C6-N1	-8.51	111.37	123.47
2	D	500	GDP	C5-C6-N1	-8.38	111.55	123.47
2	A	500	GDP	C5-C6-N1	-7.97	112.13	123.47
2	B	500	GDP	C5-C6-N1	-7.39	112.96	123.47
3	C	600	51G	O3-C13-O4	-5.59	97.60	109.01
3	B	600	51G	O3-C13-O4	-5.55	97.67	109.01
3	D	600	51G	O3-C13-O4	-4.67	99.48	109.01
3	A	600	51G	O3-C13-O4	-3.96	100.92	109.01
2	B	500	GDP	O2B-PB-O1B	-3.63	96.45	110.60
3	B	600	51G	O1-C7-C8	-3.53	100.80	108.96
3	D	600	51G	O1-C7-C8	-3.21	101.54	108.96
2	B	500	GDP	N3-C2-N1	-2.85	123.24	127.41
3	B	600	51G	O1-C6-C5	-2.78	103.38	108.25
3	C	600	51G	O1-C7-C8	-2.77	102.55	108.96
3	A	600	51G	O1-C7-C8	-2.73	102.64	108.96
2	D	500	GDP	C6-C5-C4	-2.65	118.25	120.85
2	A	500	GDP	N3-C2-N1	-2.58	123.63	127.41
2	D	500	GDP	N3-C2-N1	-2.53	123.69	127.41
2	C	500	GDP	N3-C2-N1	-2.48	123.78	127.41
2	C	500	GDP	C2-N3-C4	-2.44	112.30	115.16
2	A	500	GDP	PA-O5'-C5'	-2.39	107.66	121.68
3	C	600	51G	C14-C15-N	-2.36	104.50	110.85
2	A	500	GDP	C2-N3-C4	-2.32	112.45	115.16
3	D	600	51G	O4-C13-C14	-2.27	106.60	110.00
2	B	500	GDP	C6-C5-C4	-2.14	118.75	120.85
3	B	600	51G	O2-C12-C7	-2.07	104.34	109.93
2	B	500	GDP	C2-N3-C4	-2.01	112.81	115.16

Continued on next page...

Continued from previous page...

Mol	Chain	Res	Type	Atoms	Z	Observed(°)	Ideal(°)
2	C	500	GDP	O3B-PB-O2B	2.98	119.39	107.59
2	B	500	GDP	O3B-PB-O1B	3.63	124.75	110.60
2	A	500	GDP	O5'-PA-O1A	4.07	124.98	109.07
2	C	500	GDP	O5'-PA-O1A	4.47	126.53	109.07
2	B	500	GDP	C6-N1-C2	5.68	124.22	116.06
3	A	600	51G	C17-O4-C13	5.95	119.97	111.32
2	A	500	GDP	C6-N1-C2	6.01	124.70	116.06
2	C	500	GDP	C6-N1-C2	6.15	124.91	116.06
2	D	500	GDP	C6-N1-C2	6.41	125.28	116.06
3	D	600	51G	C17-O4-C13	6.65	120.98	111.32
3	B	600	51G	C17-O4-C13	8.67	123.92	111.32
3	C	600	51G	C17-O4-C13	9.37	124.94	111.32

There are no chirality outliers.

There are no torsion outliers.

There are no ring outliers.

6 monomers are involved in 15 short contacts:

Mol	Chain	Res	Type	Clashes	Symm-Clashes
2	A	500	GDP	6	0
3	A	600	51G	3	0
2	B	500	GDP	1	0
2	C	500	GDP	2	0
3	C	600	51G	2	0
2	D	500	GDP	1	0

5.7 Other polymers [i](#)

There are no such residues in this entry.

5.8 Polymer linkage issues [i](#)

There are no chain breaks in this entry.

6 Fit of model and data

6.1 Protein, DNA and RNA chains

In the following table, the column labelled ‘#RSRZ > 2’ contains the number (and percentage) of RSRZ outliers, followed by percent RSRZ outliers for the chain as percentile scores relative to all X-ray entries and entries of similar resolution. The OWAB column contains the minimum, median, 95th percentile and maximum values of the occupancy-weighted average B-factor per residue. The column labelled ‘Q < 0.9’ lists the number of (and percentage) of residues with an average occupancy less than 0.9.

Mol	Chain	Analysed	<RSRZ>	#RSRZ>2	OWAB(Å ²)	Q<0.9
1	A	292/305 (95%)	0.23	6 (2%) 63 66	42, 63, 93, 120	0
1	B	290/305 (95%)	0.09	3 (1%) 82 84	40, 56, 84, 114	0
1	C	293/305 (96%)	0.15	4 (1%) 75 77	35, 60, 86, 109	0
1	D	301/305 (98%)	0.20	7 (2%) 60 63	45, 62, 88, 122	0
All	All	1176/1220 (96%)	0.17	20 (1%) 70 72	35, 60, 89, 122	0

All (20) RSRZ outliers are listed below:

Mol	Chain	Res	Type	RSRZ
1	B	181	ASP	5.1
1	A	212	TYR	4.4
1	D	179	TYR	3.6
1	C	183	ALA	3.4
1	B	182	ASN	3.3
1	D	473	TYR	3.2
1	D	208	ILE	2.7
1	A	230	SER	2.7
1	A	231	THR	2.7
1	A	208	ILE	2.7
1	B	208	ILE	2.6
1	A	207	ILE	2.5
1	C	207	ILE	2.3
1	D	229	PHE	2.3
1	D	254	ASN	2.3
1	D	234	LYS	2.2
1	C	286	ILE	2.2
1	D	460	ILE	2.2
1	A	203	ASP	2.1
1	C	479	ASP	2.1

6.2 Non-standard residues in protein, DNA, RNA chains [i](#)

There are no non-standard protein/DNA/RNA residues in this entry.

6.3 Carbohydrates [i](#)

There are no carbohydrates in this entry.

6.4 Ligands [i](#)

In the following table, the Atoms column lists the number of modelled atoms in the group and the number defined in the chemical component dictionary. The B-factors column lists the minimum, median, 95th percentile and maximum values of B factors of atoms in the group. The column labelled 'Q< 0.9' lists the number of atoms with occupancy less than 0.9.

Mol	Type	Chain	Res	Atoms	RSCC	RSR	B-factors(Å ²)	Q<0.9
5	CL	A	802	1/1	0.81	0.15	87,87,87,87	0
4	MG	B	700	1/1	0.83	0.11	71,71,71,71	0
5	CL	B	802	1/1	0.90	0.26	90,90,90,90	0
5	CL	C	802	1/1	0.93	0.10	83,83,83,83	0
3	51G	C	600	33/33	0.94	0.12	55,65,82,87	0
4	MG	C	700	1/1	0.94	0.06	77,77,77,77	0
3	51G	A	600	33/33	0.95	0.14	53,60,75,76	0
3	51G	B	600	33/33	0.96	0.16	58,66,83,93	0
3	51G	D	600	33/33	0.96	0.17	55,68,80,85	0
2	GDP	B	500	28/28	0.96	0.16	64,67,71,73	0
4	MG	B	702	1/1	0.97	0.06	65,65,65,65	0
2	GDP	A	500	28/28	0.97	0.15	51,57,62,64	0
4	MG	D	702	1/1	0.97	0.07	54,54,54,54	0
4	MG	A	700	1/1	0.98	0.10	64,64,64,64	0
4	MG	D	700	1/1	0.98	0.07	50,50,50,50	0
2	GDP	C	500	28/28	0.98	0.15	46,53,56,57	0
4	MG	C	702	1/1	0.98	0.08	51,51,51,51	0
4	MG	A	702	1/1	0.99	0.08	58,58,58,58	0
2	GDP	D	500	28/28	0.99	0.14	44,53,56,57	0

6.5 Other polymers [i](#)

There are no such residues in this entry.