



Full wwPDB X-ray Structure Validation Report ⓘ

Mar 11, 2024 – 12:33 PM JST

PDB ID : 8IQQ
Title : Crystal structure of Anti-PEG antibody M9 Fv-clasp fragment with PEG (co-crystallization with PEG2000MME)
Authors : Mori, T.; Teramoto, T.; Liu, Y.; Mori, T.; Kakuta, Y.
Deposited on : 2023-03-17
Resolution : 2.02 Å(reported)

This is a Full wwPDB X-ray Structure Validation Report for a publicly released PDB entry.

We welcome your comments at validation@mail.wwpdb.org

A user guide is available at

<https://www.wwpdb.org/validation/2017/XrayValidationReportHelp>

with specific help available everywhere you see the ⓘ symbol.

The types of validation reports are described at

<http://www.wwpdb.org/validation/2017/FAQs#types>.

The following versions of software and data (see [references ⓘ](#)) were used in the production of this report:

MolProbity : 4.02b-467
Mogul : 1.8.5 (274361), CSD as541be (2020)
Xtriage (Phenix) : 1.13
EDS : 2.36
buster-report : 1.1.7 (2018)
Percentile statistics : 20191225.v01 (using entries in the PDB archive December 25th 2019)
Refmac : 5.8.0158
CCP4 : 7.0.044 (Gargrove)
Ideal geometry (proteins) : Engh & Huber (2001)
Ideal geometry (DNA, RNA) : Parkinson et al. (1996)
Validation Pipeline (wwPDB-VP) : 2.36

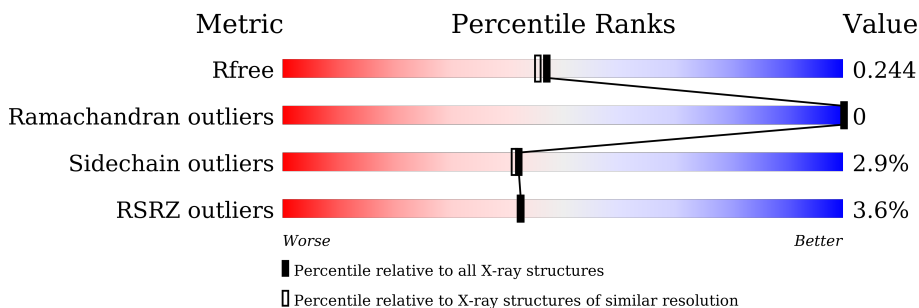
1 Overall quality at a glance

The following experimental techniques were used to determine the structure:

X-RAY DIFFRACTION

The reported resolution of this entry is 2.02 Å.

Percentile scores (ranging between 0-100) for global validation metrics of the entry are shown in the following graphic. The table shows the number of entries on which the scores are based.



Metric	Whole archive (#Entries)	Similar resolution (#Entries, resolution range(Å))
R_{free}	130704	10434 (2.04-2.00)
Ramachandran outliers	138981	11493 (2.04-2.00)
Sidechain outliers	138945	11492 (2.04-2.00)
RSRZ outliers	127900	10220 (2.04-2.00)

The table below summarises the geometric issues observed across the polymeric chains and their fit to the electron density. The red, orange, yellow and green segments of the lower bar indicate the fraction of residues that contain outliers for ≥ 3 , 2, 1 and 0 types of geometric quality criteria respectively. A grey segment represents the fraction of residues that are not modelled. The numeric value for each fraction is indicated below the corresponding segment, with a dot representing fractions $\leq 5\%$. The upper red bar (where present) indicates the fraction of residues that have poor fit to the electron density. The numeric value is given above the bar.

Mol	Chain	Length	Quality of chain
1	L	179	 91% 8%
1	l	179	 91% 8%
2	H	185	 88% 8%
2	h	185	 90% 8%

2 Entry composition [i](#)

There are 4 unique types of molecules in this entry. The entry contains 6071 atoms, of which 0 are hydrogens and 0 are deuteriums.

In the tables below, the ZeroOcc column contains the number of atoms modelled with zero occupancy, the AltConf column contains the number of residues with at least one atom in alternate conformation and the Trace column contains the number of residues modelled with at most 2 atoms.

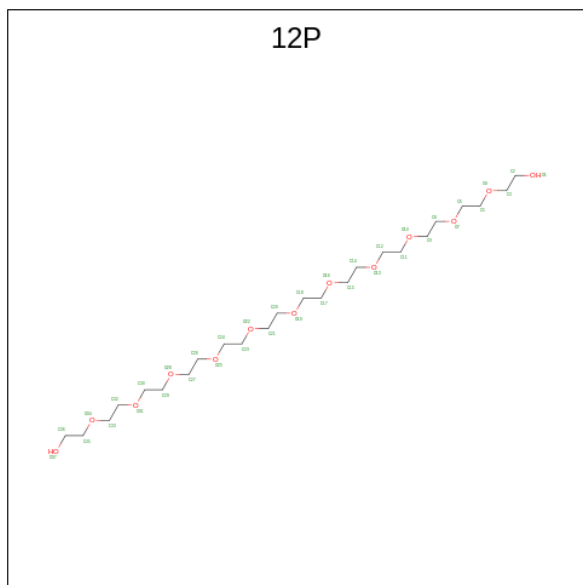
- Molecule 1 is a protein called M9 VL-SARAH.

Mol	Chain	Residues	Atoms					ZeroOcc	AltConf	Trace
			Total	C	N	O	S			
1	L	165	1316	835	221	252	8	0	1	0
1	l	165	1314	833	221	252	8	0	1	0

- Molecule 2 is a protein called M9 VH-SARAH.

Mol	Chain	Residues	Atoms					ZeroOcc	AltConf	Trace
			Total	C	N	O	S			
2	H	171	1364	864	220	270	10	0	2	0
2	h	171	1368	868	220	271	9	0	2	0

- Molecule 3 is DODECAETHYLENE GLYCOL (three-letter code: 12P) (formula: $C_{24}H_{50}O_{13}$) (labeled as "Ligand of Interest" by depositor).



Mol	Chain	Residues	Atoms			ZeroOcc	AltConf
3	H	1	Total	C	O	0	0
			37	24	13		
3	h	1	Total	C	O	0	0
			37	24	13		

- Molecule 4 is water.

Mol	Chain	Residues	Atoms		ZeroOcc	AltConf
4	L	148	Total	O	0	0
			148	148		
4	H	151	Total	O	0	0
			151	151		
4	l	175	Total	O	0	0
			175	175		
4	h	161	Total	O	0	0
			161	161		

4 Data and refinement statistics

Property	Value	Source
Space group	C 1 2 1	Depositor
Cell constants a, b, c, α , β , γ	109.99Å 70.25Å 103.58Å 90.00° 110.94° 90.00°	Depositor
Resolution (Å)	48.37 – 2.02 48.37 – 2.02	Depositor EDS
% Data completeness (in resolution range)	99.8 (48.37-2.02) 88.8 (48.37-2.02)	Depositor EDS
R_{merge}	(Not available)	Depositor
R_{sym}	(Not available)	Depositor
$\langle I/\sigma(I) \rangle$ ¹	0.63 (at 2.01Å)	Xtrriage
Refinement program	PHENIX (1.20.1_4487: ???)	Depositor
R, R_{free}	0.199 , 0.243 0.200 , 0.244	Depositor DCC
R_{free} test set	2000 reflections (4.13%)	wwPDB-VP
Wilson B-factor (Å ²)	23.6	Xtrriage
Anisotropy	0.328	Xtrriage
Bulk solvent k_{sol} (e/Å ³), B_{sol} (Å ²)	0.33 , 47.1	EDS
L-test for twinning ²	$\langle L \rangle = 0.51$, $\langle L^2 \rangle = 0.35$	Xtrriage
Estimated twinning fraction	No twinning to report.	Xtrriage
F_o, F_c correlation	0.95	EDS
Total number of atoms	6071	wwPDB-VP
Average B, all atoms (Å ²)	34.0	wwPDB-VP

Xtrriage's analysis on translational NCS is as follows: *The analyses of the Patterson function reveals a significant off-origin peak that is 48.49 % of the origin peak, indicating pseudo-translational symmetry. The chance of finding a peak of this or larger height randomly in a structure without pseudo-translational symmetry is equal to 8.5343e-05. The detected translational NCS is most likely also responsible for the elevated intensity ratio.*

¹Intensities estimated from amplitudes.

²Theoretical values of $\langle |L| \rangle$, $\langle L^2 \rangle$ for acentric reflections are 0.5, 0.333 respectively for untwinned datasets, and 0.375, 0.2 for perfectly twinned datasets.

5 Model quality [i](#)

5.1 Standard geometry [i](#)

Bond lengths and bond angles in the following residue types are not validated in this section: 12P

The Z score for a bond length (or angle) is the number of standard deviations the observed value is removed from the expected value. A bond length (or angle) with $|Z| > 5$ is considered an outlier worth inspection. RMSZ is the root-mean-square of all Z scores of the bond lengths (or angles).

Mol	Chain	Bond lengths		Bond angles	
		RMSZ	# Z >5	RMSZ	# Z >5
1	L	0.25	0/1347	0.47	0/1817
1	l	0.24	0/1345	0.47	0/1815
2	H	0.25	0/1400	0.49	0/1890
2	h	0.25	0/1405	0.48	0/1898
All	All	0.25	0/5497	0.48	0/7420

There are no bond length outliers.

There are no bond angle outliers.

There are no chirality outliers.

There are no planarity outliers.

5.2 Too-close contacts [i](#)

Due to software issues we are unable to calculate clashes - this section is therefore empty.

5.3 Torsion angles [i](#)

5.3.1 Protein backbone [i](#)

In the following table, the Percentiles column shows the percent Ramachandran outliers of the chain as a percentile score with respect to all X-ray entries followed by that with respect to entries of similar resolution.

The Analysed column shows the number of residues for which the backbone conformation was analysed, and the total number of residues.

Mol	Chain	Analysed	Favoured	Allowed	Outliers	Percentiles
1	L	164/179 (92%)	160 (98%)	4 (2%)	0	100 100

Continued on next page...

Continued from previous page...

Mol	Chain	Analysed	Favoured	Allowed	Outliers	Percentiles	
1	l	164/179 (92%)	159 (97%)	5 (3%)	0	100	100
2	H	171/185 (92%)	166 (97%)	5 (3%)	0	100	100
2	h	171/185 (92%)	167 (98%)	4 (2%)	0	100	100
All	All	670/728 (92%)	652 (97%)	18 (3%)	0	100	100

There are no Ramachandran outliers to report.

5.3.2 Protein sidechains [i](#)

In the following table, the Percentiles column shows the percent sidechain outliers of the chain as a percentile score with respect to all X-ray entries followed by that with respect to entries of similar resolution.

The Analysed column shows the number of residues for which the sidechain conformation was analysed, and the total number of residues.

Mol	Chain	Analysed	Rotameric	Outliers	Percentiles	
1	L	148/158 (94%)	144 (97%)	4 (3%)	44	44
1	l	148/158 (94%)	146 (99%)	2 (1%)	67	70
2	H	149/158 (94%)	141 (95%)	8 (5%)	22	17
2	h	149/158 (94%)	145 (97%)	4 (3%)	44	44
All	All	594/632 (94%)	576 (97%)	18 (3%)	42	40

All (18) residues with a non-rotameric sidechain are listed below:

Mol	Chain	Res	Type
1	L	4	LEU
1	L	62	SER
1	L	139[A]	MET
1	L	139[B]	MET
2	H	1	MET
2	H	2	GLU
2	H	12	LEU
2	H	13	VAL
2	H	102	ASP
2	H	128	LYS
2	H	138	ARG
2	H	145	MET
1	l	25	ARG

Continued on next page...

Continued from previous page...

Mol	Chain	Res	Type
1	l	116	SER
2	h	94	MET
2	h	97	CYS
2	h	102	ASP
2	h	127	LEU

Sometimes sidechains can be flipped to improve hydrogen bonding and reduce clashes. All (3) such sidechains are listed below:

Mol	Chain	Res	Type
1	L	19	GLN
2	H	4	GLN
2	h	136	GLN

5.3.3 RNA [i](#)

There are no RNA molecules in this entry.

5.4 Non-standard residues in protein, DNA, RNA chains [i](#)

There are no non-standard protein/DNA/RNA residues in this entry.

5.5 Carbohydrates [i](#)

There are no monosaccharides in this entry.

5.6 Ligand geometry [i](#)

2 ligands are modelled in this entry.

In the following table, the Counts columns list the number of bonds (or angles) for which Mogul statistics could be retrieved, the number of bonds (or angles) that are observed in the model and the number of bonds (or angles) that are defined in the Chemical Component Dictionary. The Link column lists molecule types, if any, to which the group is linked. The Z score for a bond length (or angle) is the number of standard deviations the observed value is removed from the expected value. A bond length (or angle) with $|Z| > 2$ is considered an outlier worth inspection. RMSZ is the root-mean-square of all Z scores of the bond lengths (or angles).

Mol	Type	Chain	Res	Link	Bond lengths			Bond angles		
					Counts	RMSZ	$\# Z > 2$	Counts	RMSZ	$\# Z > 2$
3	12P	h	201	-	36,36,36	0.55	0	35,35,35	0.20	0

Mol	Type	Chain	Res	Link	Bond lengths			Bond angles		
					Counts	RMSZ	# Z > 2	Counts	RMSZ	# Z > 2
3	12P	H	201	-	36,36,36	0.55	0	35,35,35	0.20	0

In the following table, the Chirals column lists the number of chiral outliers, the number of chiral centers analysed, the number of these observed in the model and the number defined in the Chemical Component Dictionary. Similar counts are reported in the Torsion and Rings columns. '-' means no outliers of that kind were identified.

Mol	Type	Chain	Res	Link	Chirals	Torsions	Rings
3	12P	h	201	-	-	14/34/34/34	-
3	12P	H	201	-	-	9/34/34/34	-

There are no bond length outliers.

There are no bond angle outliers.

There are no chirality outliers.

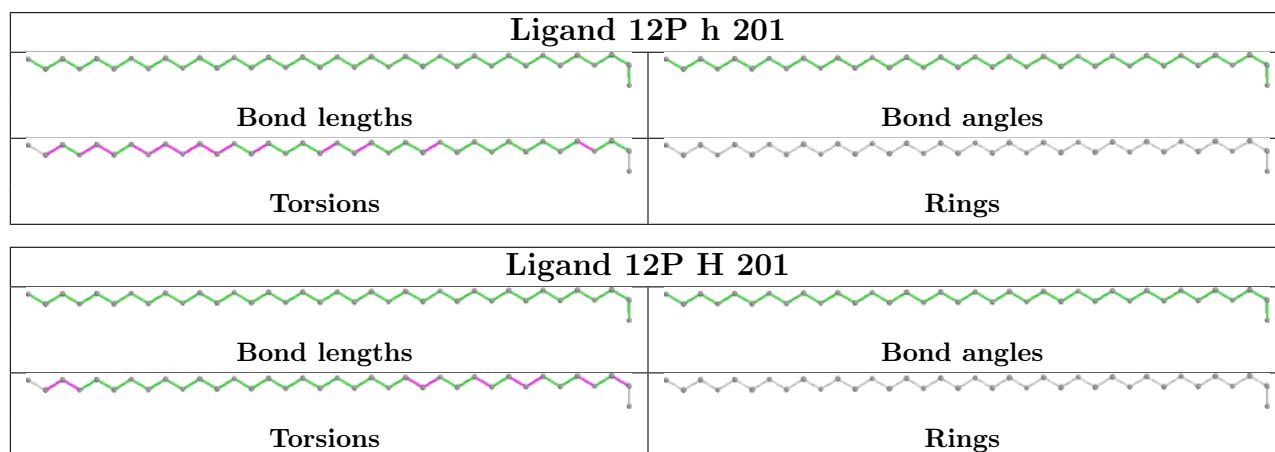
All (23) torsion outliers are listed below:

Mol	Chain	Res	Type	Atoms
3	H	201	12P	O28-C29-C30-O31
3	h	201	12P	O4-C5-C6-O7
3	h	201	12P	O10-C11-C12-O13
3	H	201	12P	O34-C35-C36-O37
3	h	201	12P	O13-C14-C15-O16
3	h	201	12P	O7-C8-C9-O10
3	h	201	12P	C32-C33-O34-C35
3	H	201	12P	O1-C2-C3-O4
3	h	201	12P	C6-C5-O4-C3
3	h	201	12P	C12-C11-O10-C9
3	H	201	12P	C23-C24-O25-C26
3	h	201	12P	C9-C8-O7-C6
3	H	201	12P	O22-C23-C24-O25
3	h	201	12P	C17-C18-O19-C20
3	h	201	12P	C23-C24-O25-C26
3	h	201	12P	O19-C20-C21-O22
3	h	201	12P	O1-C2-C3-O4
3	h	201	12P	C8-C9-O10-C11
3	H	201	12P	C32-C33-O34-C35
3	H	201	12P	C26-C27-O28-C29
3	H	201	12P	C29-C30-O31-C32
3	H	201	12P	C2-C3-O4-C5
3	h	201	12P	C11-C12-O13-C14

There are no ring outliers.

No monomer is involved in short contacts.

The following is a two-dimensional graphical depiction of Mogul quality analysis of bond lengths, bond angles, torsion angles, and ring geometry for all instances of the Ligand of Interest. In addition, ligands with molecular weight > 250 and outliers as shown on the validation Tables will also be included. For torsion angles, if less than 5% of the Mogul distribution of torsion angles is within 10 degrees of the torsion angle in question, then that torsion angle is considered an outlier. Any bond that is central to one or more torsion angles identified as an outlier by Mogul will be highlighted in the graph. For rings, the root-mean-square deviation (RMSD) between the ring in question and similar rings identified by Mogul is calculated over all ring torsion angles. If the average RMSD is greater than 60 degrees and the minimal RMSD between the ring in question and any Mogul-identified rings is also greater than 60 degrees, then that ring is considered an outlier. The outliers are highlighted in purple. The color gray indicates Mogul did not find sufficient equivalents in the CSD to analyse the geometry.



5.7 Other polymers [i](#)

There are no such residues in this entry.

5.8 Polymer linkage issues [i](#)

There are no chain breaks in this entry.

6 Fit of model and data [i](#)

6.1 Protein, DNA and RNA chains [i](#)

In the following table, the column labelled ‘#RSRZ > 2’ contains the number (and percentage) of RSRZ outliers, followed by percent RSRZ outliers for the chain as percentile scores relative to all X-ray entries and entries of similar resolution. The OWAB column contains the minimum, median, 95th percentile and maximum values of the occupancy-weighted average B-factor per residue. The column labelled ‘Q < 0.9’ lists the number of (and percentage) of residues with an average occupancy less than 0.9.

Mol	Chain	Analysed	<RSRZ>	#RSRZ>2	OWAB(Å ²)	Q<0.9
1	L	165/179 (92%)	-0.24	1 (0%) 89 89	21, 31, 49, 65	0
1	l	165/179 (92%)	-0.26	1 (0%) 89 89	20, 31, 54, 74	0
2	H	171/185 (92%)	-0.02	9 (5%) 26 26	17, 29, 59, 79	0
2	h	171/185 (92%)	-0.06	13 (7%) 13 13	18, 29, 65, 74	0
All	All	672/728 (92%)	-0.14	24 (3%) 42 42	17, 31, 59, 79	0

All (24) RSRZ outliers are listed below:

Mol	Chain	Res	Type	RSRZ
2	H	122	SER	7.7
2	H	121	GLY	5.9
2	H	126	PHE	5.3
2	h	1	MET	4.9
2	h	124	TYR	4.2
2	H	1	MET	4.2
2	h	121	GLY	4.0
2	h	126	PHE	3.3
2	h	140	LEU	3.2
2	H	140	LEU	3.2
2	H	124	TYR	2.9
2	h	125	GLU	2.9
2	H	125	GLU	2.7
2	H	109	TYR	2.5
2	h	129	SER	2.4
2	h	133	GLU	2.4
2	H	127	LEU	2.4
1	L	139[A]	MET	2.3
2	h	109[A]	TYR	2.3
1	l	164	ALA	2.3
2	h	120	SER	2.2

Continued on next page...

Continued from previous page...

Mol	Chain	Res	Type	RSRZ
2	h	122	SER	2.2
2	h	130	TRP	2.1
2	h	135	LEU	2.0

6.2 Non-standard residues in protein, DNA, RNA chains [i](#)

There are no non-standard protein/DNA/RNA residues in this entry.

6.3 Carbohydrates [i](#)

There are no monosaccharides in this entry.

6.4 Ligands [i](#)

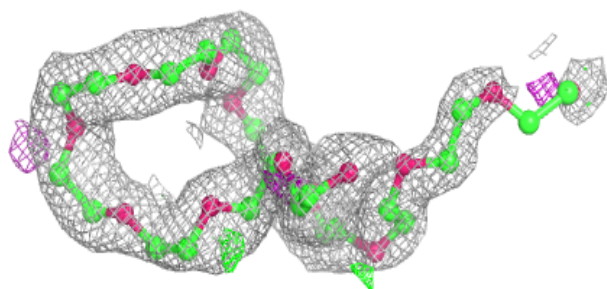
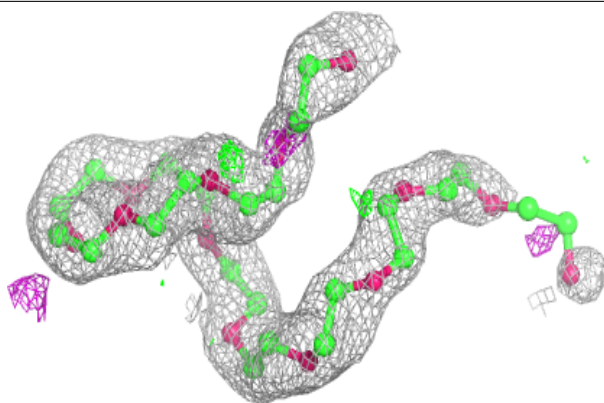
In the following table, the Atoms column lists the number of modelled atoms in the group and the number defined in the chemical component dictionary. The B-factors column lists the minimum, median, 95th percentile and maximum values of B factors of atoms in the group. The column labelled 'Q< 0.9' lists the number of atoms with occupancy less than 0.9.

Mol	Type	Chain	Res	Atoms	RSCC	RSR	B-factors(Å ²)	Q<0.9
3	12P	h	201	37/37	0.86	0.17	23,39,59,65	0
3	12P	H	201	37/37	0.90	0.16	22,37,57,69	0

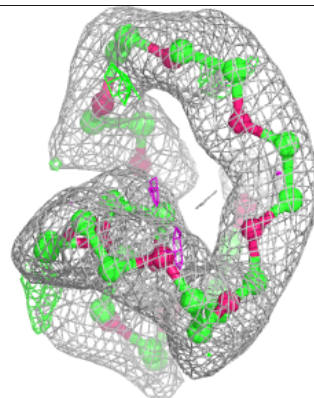
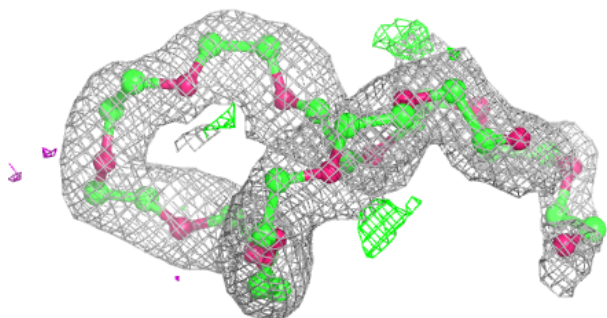
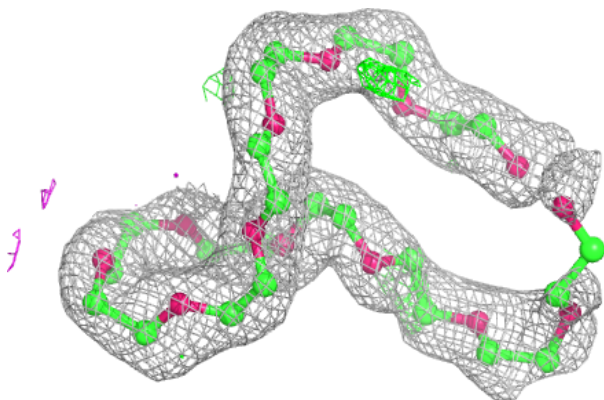
The following is a graphical depiction of the model fit to experimental electron density of all instances of the Ligand of Interest. In addition, ligands with molecular weight > 250 and outliers as shown on the geometry validation Tables will also be included. Each fit is shown from different orientation to approximate a three-dimensional view.

Electron density around 12P h 201:

$2mF_o-DF_c$ (at 0.7 rmsd) in gray
 mF_o-DF_c (at 3 rmsd) in purple (negative)
and green (positive)

**Electron density around 12P H 201:**

$2mF_o-DF_c$ (at 0.7 rmsd) in gray
 mF_o-DF_c (at 3 rmsd) in purple (negative)
and green (positive)



6.5 Other polymers [i](#)

There are no such residues in this entry.