



Full wwPDB NMR Structure Validation Report ⓘ

May 29, 2020 – 08:25 am BST

PDB ID : 5J18
Title : Solution structure of Ras Binding Domain (RBD) of B-Raf complexed with Rigosertib (Complex I)
Authors : Dutta, K.; Vasquez-Del Carpio, R.; Aggarwal, A.K.; Reddy, E.P.
Deposited on : 2016-03-29

This is a Full wwPDB NMR Structure Validation Report for a publicly released PDB entry.

We welcome your comments at validation@mail.wwpdb.org

A user guide is available at

<https://www.wwpdb.org/validation/2017/NMRValidationReportHelp>

with specific help available everywhere you see the ⓘ symbol.

The following versions of software and data (see [references ⓘ](#)) were used in the production of this report:

Cyrange : Kirchner and Güntert (2011)
NmrClust : Kelley et al. (1996)
MolProbity : 4.02b-467
Mogul : 1.8.5 (274361), CSD as541be (2020)
buster-report : 1.1.7 (2018)
Percentile statistics : 20191225.v01 (using entries in the PDB archive December 25th 2019)
RCI : v_1n_11_5_13_A (Berjanski et al., 2005)
PANAV : Wang et al. (2010)
ShiftChecker : 2.11
Ideal geometry (proteins) : Engh & Huber (2001)
Ideal geometry (DNA, RNA) : Parkinson et al. (1996)
Validation Pipeline (wwPDB-VP) : 2.11

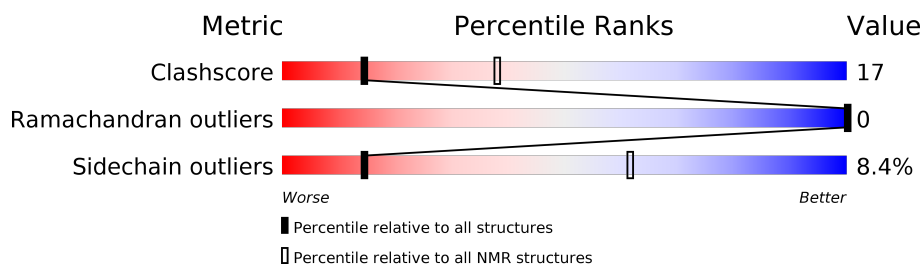
1 Overall quality at a glance i

The following experimental techniques were used to determine the structure:

SOLUTION NMR

The overall completeness of chemical shifts assignment is 90%.

Percentile scores (ranging between 0-100) for global validation metrics of the entry are shown in the following graphic. The table shows the number of entries on which the scores are based.



Metric	Whole archive (#Entries)	NMR archive (#Entries)
Clashscore	158937	12864
Ramachandran outliers	154571	11451
Sidechain outliers	154315	11428

The table below summarises the geometric issues observed across the polymeric chains and their fit to the experimental data. The red, orange, yellow and green segments indicate the fraction of residues that contain outliers for ≥ 3 , 2, 1 and 0 types of geometric quality criteria. A cyan segment indicates the fraction of residues that are not part of the well-defined cores, and a grey segment represents the fraction of residues that are not modelled. The numeric value for each fraction is indicated below the corresponding segment, with a dot representing fractions $\leq 5\%$

Mol	Chain	Length	Quality of chain
1	A	92	

2 Ensemble composition and analysis

This entry contains 10 models. Model 1 is the overall representative, medoid model (most similar to other models).

The following residues are included in the computation of the global validation metrics.

Well-defined (core) protein residues			
Well-defined core	Residue range (total)	Backbone RMSD (Å)	Medoid model
1	A:155-A:198, A:208-A:226 (63)	0.20	1

Ill-defined regions of proteins are excluded from the global statistics.

Ligands and non-protein polymers are included in the analysis.

The models can be grouped into 2 clusters. No single-model clusters were found.

Cluster number	Models
1	1, 4, 6, 7, 8, 9, 10
2	2, 3, 5

3 Entry composition i

There are 2 unique types of molecules in this entry. The entry contains 1382 atoms, of which 702 are hydrogens and 0 are deuteriums.

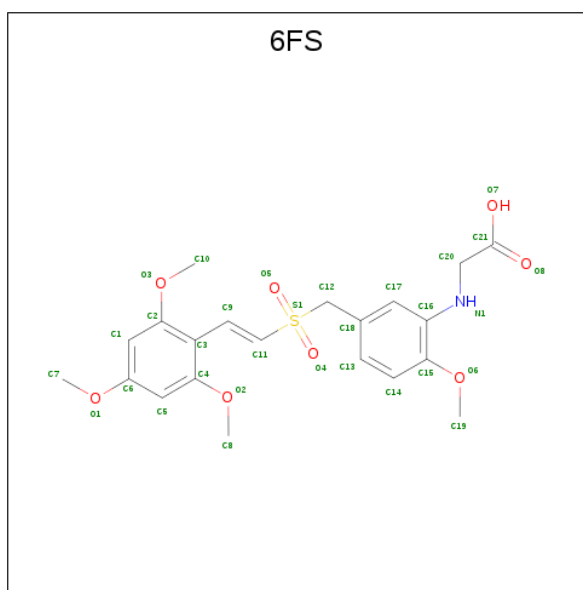
- Molecule 1 is a protein called Serine/threonine-protein kinase B-raf.

Mol	Chain	Residues	Atoms					Trace	
			Total	C	H	N	O		S
1	A	82	1327	413	678	115	116	5	0

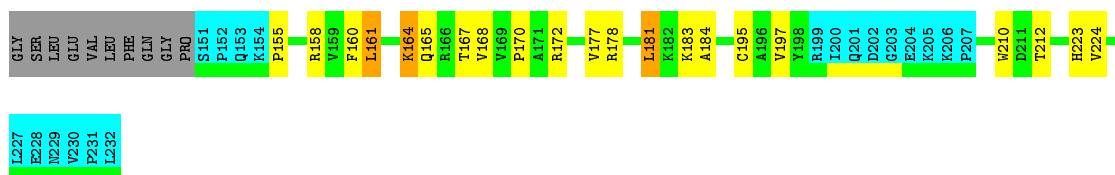
There are 10 discrepancies between the modelled and reference sequences:

Chain	Residue	Modelled	Actual	Comment	Reference
A	141	GLY	-	expression tag	UNP P15056
A	142	SER	-	expression tag	UNP P15056
A	143	LEU	-	expression tag	UNP P15056
A	144	GLU	-	expression tag	UNP P15056
A	145	VAL	-	expression tag	UNP P15056
A	146	LEU	-	expression tag	UNP P15056
A	147	PHE	-	expression tag	UNP P15056
A	148	GLN	-	expression tag	UNP P15056
A	149	GLY	-	expression tag	UNP P15056
A	150	PRO	-	expression tag	UNP P15056

- Molecule 2 is N-[2-methoxy-5-({[(E)-2-(2,4,6-trimethoxyphenyl)ethenyl]sulfonyl}methyl)phenyl]glycine (three-letter code: 6FS) (formula: C₂₁H₂₅NO₈S).

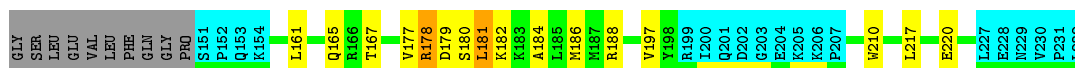


Mol	Chain	Residues	Atoms					
			Total	C	H	N	O	S
2	A	1	55	21	24	1	8	1



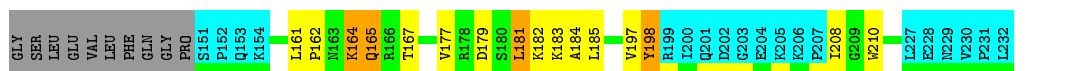
4.2.3 Score per residue for model 3

- Molecule 1: Serine/threonine-protein kinase B-raf



4.2.4 Score per residue for model 4

- Molecule 1: Serine/threonine-protein kinase B-raf



4.2.5 Score per residue for model 5

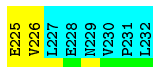
- Molecule 1: Serine/threonine-protein kinase B-raf



4.2.6 Score per residue for model 6

- Molecule 1: Serine/threonine-protein kinase B-raf

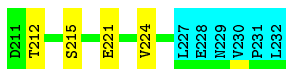




4.2.7 Score per residue for model 7

- Molecule 1: Serine/threonine-protein kinase B-raf

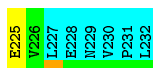
Chain A: 39% 27% 21% 11%



4.2.8 Score per residue for model 8

- Molecule 1: Serine/threonine-protein kinase B-raf

Chain A: 42% 23% 21% 11%



4.2.9 Score per residue for model 9

- Molecule 1: Serine/threonine-protein kinase B-raf

Chain A: 49% 17% 21% 11%



4.2.10 Score per residue for model 10

- Molecule 1: Serine/threonine-protein kinase B-raf

Chain A: 45% 21% 21% 11%



L227
E228
H229
Y230
P231
L232

5 Refinement protocol and experimental data overview

The models were refined using the following method: *DGSA-distance geometry simulated annealing*.

Of the 1024 calculated structures, 10 were deposited, based on the following criterion: *structures with the least restraint violations*.

The following table shows the software used for structure solution, optimisation and refinement.

Software name	Classification	Version
ARIA	refinement	
ARIA	structure calculation	

The following table shows chemical shift validation statistics as aggregates over all chemical shift files. Detailed validation can be found in section 6 of this report.

Chemical shift file(s)	input_cs.cif
Number of chemical shift lists	1
Total number of shifts	1057
Number of shifts mapped to atoms	1057
Number of unparsed shifts	0
Number of shifts with mapping errors	0
Number of shifts with mapping warnings	0
Assignment completeness (well-defined parts)	90%

No validations of the models with respect to experimental NMR restraints is performed at this time.

COVALENT-GEOMETRY INFOmissingINFO

5.1 Too-close contacts

In the following table, the Non-H and H(model) columns list the number of non-hydrogen atoms and hydrogen atoms in each chain respectively. The H(added) column lists the number of hydrogen atoms added and optimized by MolProbity. The Clashes column lists the number of clashes averaged over the ensemble.

Mol	Chain	Non-H	H(model)	H(added)	Clashes
1	A	496	517	516	16±3
2	A	31	24	0	2±1
All	All	5270	5410	5160	178

The all-atom clashscore is defined as the number of clashes found per 1000 atoms (including hydrogen atoms). The all-atom clashscore for this structure is 17.

All unique clashes are listed below, sorted by their clash magnitude.

Atom-1	Atom-2	Clash(Å)	Distance(Å)	Models	
				Worst	Total
1:A:192:PRO:HA	1:A:195:CYS:SG	0.74	2.22	1	1
1:A:177:VAL:O	1:A:181:LEU:HD12	0.72	1.83	4	9
2:A:301:6FS:C19	2:A:301:6FS:N1	0.71	2.54	5	1
1:A:167:THR:HG21	1:A:184:ALA:HB1	0.63	1.70	4	9
1:A:179:ASP:O	1:A:182:LYS:HG2	0.63	1.92	6	8
1:A:177:VAL:CG2	1:A:210:TRP:HA	0.63	2.24	5	3
1:A:197:VAL:HG23	1:A:210:TRP:CZ2	0.58	2.33	7	7
1:A:172:ARG:NE	1:A:172:ARG:HA	0.58	2.14	2	1
1:A:162:PRO:HD3	1:A:224:VAL:HG22	0.58	1.75	10	1
1:A:157:VAL:HG23	1:A:220:GLU:O	0.57	1.98	6	2
1:A:178:ARG:O	1:A:182:LYS:HB3	0.56	2.00	5	3
1:A:159:VAL:CG1	1:A:224:VAL:HG23	0.56	2.30	7	1
1:A:161:LEU:HD22	1:A:161:LEU:H	0.56	1.60	9	1
1:A:177:VAL:HG22	1:A:210:TRP:HA	0.56	1.78	4	3
1:A:181:LEU:O	1:A:184:ALA:HB3	0.55	2.01	10	8
2:A:301:6FS:C11	2:A:301:6FS:O3	0.55	2.55	10	6
1:A:181:LEU:HD23	1:A:224:VAL:HG21	0.54	1.78	1	3
1:A:182:LYS:O	1:A:186:MET:HG3	0.54	2.02	5	3
1:A:161:LEU:HB2	1:A:165:GLN:HB2	0.54	1.80	3	5
1:A:181:LEU:C	1:A:181:LEU:HD13	0.53	2.24	2	6
1:A:158:ARG:CG	1:A:168:VAL:HB	0.53	2.34	7	2
1:A:161:LEU:HD13	1:A:188:ARG:HD3	0.52	1.81	6	1
1:A:161:LEU:HD21	1:A:167:THR:HB	0.52	1.81	9	3
1:A:167:THR:HG21	1:A:184:ALA:CB	0.52	2.35	9	8
1:A:160:PHE:HA	1:A:165:GLN:O	0.52	2.04	2	1
1:A:181:LEU:HD13	1:A:181:LEU:C	0.51	2.26	7	3
1:A:164:LYS:HE3	1:A:164:LYS:HA	0.51	1.83	4	5
2:A:301:6FS:O3	2:A:301:6FS:C11	0.51	2.57	6	4
1:A:195:CYS:HB3	1:A:224:VAL:CG1	0.51	2.36	7	4
1:A:177:VAL:HG23	1:A:212:THR:O	0.50	2.07	7	5
1:A:177:VAL:O	1:A:181:LEU:HD23	0.50	2.07	5	1
1:A:179:ASP:HA	1:A:182:LYS:CD	0.50	2.37	4	2
1:A:177:VAL:CG1	1:A:210:TRP:HA	0.49	2.36	3	1
1:A:181:LEU:HD11	1:A:210:TRP:CZ3	0.48	2.42	1	4
1:A:158:ARG:HG2	1:A:168:VAL:HG13	0.48	1.85	10	1
1:A:158:ARG:HG2	1:A:168:VAL:HB	0.48	1.86	7	2
1:A:162:PRO:O	1:A:165:GLN:HG2	0.47	2.09	5	3
1:A:156:ILE:HB	1:A:168:VAL:CG2	0.47	2.40	7	2
1:A:178:ARG:HD2	1:A:210:TRP:O	0.47	2.10	2	1
1:A:198:TYR:CZ	1:A:225:GLU:HG3	0.47	2.45	8	2
1:A:181:LEU:HD22	1:A:185:LEU:CD2	0.46	2.39	4	3

Continued on next page...

Continued from previous page...

Atom-1	Atom-2	Clash(Å)	Distance(Å)	Models	
				Worst	Total
1:A:196:ALA:O	1:A:224:VAL:HB	0.46	2.10	10	1
1:A:183:LYS:O	1:A:187:MET:HG2	0.46	2.11	6	1
1:A:167:THR:OG1	2:A:301:6FS:C5	0.46	2.64	6	2
1:A:167:THR:HA	2:A:301:6FS:C1	0.46	2.41	6	4
1:A:158:ARG:HG2	1:A:168:VAL:HG22	0.45	1.88	2	2
1:A:172:ARG:O	1:A:175:VAL:HG12	0.45	2.11	7	1
1:A:173:CYS:HA	1:A:215:SER:CB	0.45	2.41	8	1
1:A:161:LEU:HD23	1:A:165:GLN:HB2	0.45	1.88	7	1
1:A:217:LEU:N	1:A:217:LEU:HD12	0.45	2.27	8	3
1:A:162:PRO:HB3	1:A:226:VAL:CG2	0.44	2.42	6	1
1:A:159:VAL:HG11	1:A:224:VAL:HG23	0.44	1.89	7	1
1:A:155:PRO:O	1:A:170:PRO:HA	0.44	2.13	2	1
1:A:213:ASP:HB2	1:A:216:TRP:CE3	0.43	2.47	10	1
1:A:197:VAL:HG22	1:A:224:VAL:HG22	0.43	1.91	8	1
1:A:181:LEU:HD21	1:A:197:VAL:HG21	0.43	1.91	5	1
1:A:157:VAL:HG13	1:A:220:GLU:O	0.43	2.13	5	1
1:A:165:GLN:HG3	1:A:188:ARG:NE	0.42	2.29	3	1
1:A:196:ALA:O	1:A:224:VAL:HA	0.42	2.14	7	1
1:A:155:PRO:HB2	1:A:218:THR:CG2	0.42	2.45	1	2
1:A:197:VAL:HG23	1:A:210:TRP:CE2	0.42	2.49	1	1
1:A:213:ASP:OD1	1:A:215:SER:HB3	0.41	2.16	8	1
1:A:155:PRO:HB2	1:A:218:THR:HG21	0.41	1.93	9	1
1:A:164:LYS:CE	1:A:164:LYS:HA	0.41	2.45	4	1
2:A:301:6FS:C17	2:A:301:6FS:C21	0.41	2.98	7	1
1:A:158:ARG:O	1:A:221:GLU:HA	0.41	2.16	7	1
1:A:162:PRO:O	1:A:163:ASN:HB2	0.41	2.15	5	1
1:A:197:VAL:HG13	1:A:210:TRP:CE2	0.41	2.51	6	1
2:A:301:6FS:O8	2:A:301:6FS:C17	0.41	2.68	10	1
1:A:197:VAL:HA	1:A:224:VAL:HB	0.40	1.92	10	1
1:A:217:LEU:O	1:A:220:GLU:HB2	0.40	2.16	3	1
1:A:188:ARG:HB3	1:A:190:LEU:CD1	0.40	2.47	7	1

5.2 Torsion angles [i](#)

5.2.1 Protein backbone [i](#)

In the following table, the Percentiles column shows the percent Ramachandran outliers of the chain as a percentile score with respect to all PDB entries followed by that with respect to all NMR entries. The Analysed column shows the number of residues for which the backbone conformation was analysed and the total number of residues.

Mol	Chain	Analysed	Favoured	Allowed	Outliers	Percentiles	
1	A	63/92 (68%)	60±1 (96±2%)	3±1 (4±2%)	0±0 (0±0%)	100	100
All	All	630/920 (68%)	604 (96%)	26 (4%)	0 (0%)	100	100

There are no Ramachandran outliers.

5.2.2 Protein sidechains [i](#)

In the following table, the Percentiles column shows the percent sidechain outliers of the chain as a percentile score with respect to all PDB entries followed by that with respect to all NMR entries. The Analysed column shows the number of residues for which the sidechain conformation was analysed and the total number of residues.

Mol	Chain	Analysed	Rotameric	Outliers	Percentiles	
1	A	56/82 (68%)	51±1 (92±2%)	5±1 (8±2%)	14	61
All	All	560/820 (68%)	513 (92%)	47 (8%)	14	61

All 13 unique residues with a non-rotameric sidechain are listed below. They are sorted by the frequency of occurrence in the ensemble.

Mol	Chain	Res	Type	Models (Total)
1	A	181	LEU	10
1	A	183	LYS	7
1	A	161	LEU	6
1	A	164	LYS	5
1	A	157	VAL	4
1	A	165	GLN	3
1	A	186	MET	3
1	A	178	ARG	2
1	A	223	HIS	2
1	A	168	VAL	2
1	A	224	VAL	1
1	A	215	SER	1
1	A	180	SER	1

5.2.3 RNA [i](#)

There are no RNA molecules in this entry.

5.3 Non-standard residues in protein, DNA, RNA chains [i](#)

There are no non-standard protein/DNA/RNA residues in this entry.

5.4 Carbohydrates [i](#)

There are no carbohydrates in this entry.

LIGAND-GEOMETRY INFOmissingINFO

5.5 Other polymers [i](#)

There are no such molecules in this entry.

5.6 Polymer linkage issues [i](#)

There are no chain breaks in this entry.

6 Chemical shift validation [i](#)

The completeness of assignment taking into account all chemical shift lists is 90% for the well-defined parts and 88% for the entire structure.

6.1 Chemical shift list 1

File name: input_cs.cif

Chemical shift list name: *assigned_chem_shift_list_0*

6.1.1 Bookkeeping [i](#)

The following table shows the results of parsing the chemical shift list and reports the number of nuclei with statistically unusual chemical shifts.

Total number of shifts	1057
Number of shifts mapped to atoms	1057
Number of unparsed shifts	0
Number of shifts with mapping errors	0
Number of shifts with mapping warnings	0
Number of shift outliers (ShiftChecker)	0

6.1.2 Chemical shift referencing [i](#)

The following table shows the suggested chemical shift referencing corrections.

Nucleus	# values	Correction \pm precision, ppm	Suggested action
$^{13}\text{C}_\alpha$	81	-0.29 ± 0.10	None needed (< 0.5 ppm)
$^{13}\text{C}_\beta$	74	0.15 ± 0.13	None needed (< 0.5 ppm)
$^{13}\text{C}'$	78	0.25 ± 0.13	None needed (< 0.5 ppm)
^{15}N	71	0.20 ± 0.38	None needed (< 0.5 ppm)

6.1.3 Completeness of resonance assignments [i](#)

The following table shows the completeness of the chemical shift assignments for the well-defined regions of the structure. The overall completeness is 90%, i.e. 713 atoms were assigned a chemical shift out of a possible 790. 0 out of 15 assigned methyl groups (LEU and VAL) were assigned stereospecifically.

	Total	^1H	^{13}C	^{15}N
Backbone	304/307 (99%)	121/122 (99%)	125/126 (99%)	58/59 (98%)
Sidechain	366/434 (84%)	222/253 (88%)	143/161 (89%)	1/20 (5%)

Continued on next page...

Continued from previous page...

	Total	¹ H	¹³ C	¹⁵ N
Aromatic	43/49 (88%)	22/25 (88%)	19/20 (95%)	2/4 (50%)
Overall	713/790 (90%)	365/400 (91%)	287/307 (93%)	61/83 (73%)

The following table shows the completeness of the chemical shift assignments for the full structure. The overall completeness is 88%, i.e. 914 atoms were assigned a chemical shift out of a possible 1044. 0 out of 18 assigned methyl groups (LEU and VAL) were assigned stereospecifically.

	Total	¹ H	¹³ C	¹⁵ N
Backbone	380/396 (96%)	151/157 (96%)	158/164 (96%)	71/75 (95%)
Sidechain	491/599 (82%)	303/352 (86%)	185/218 (85%)	3/29 (10%)
Aromatic	43/49 (88%)	22/25 (88%)	19/20 (95%)	2/4 (50%)
Overall	914/1044 (88%)	476/534 (89%)	362/402 (90%)	76/108 (70%)

6.1.4 Statistically unusual chemical shifts [i](#)

There are no statistically unusual chemical shifts.

6.1.5 Random Coil Index (RCI) plots [i](#)

The image below reports *random coil index* values for the protein chains in the structure. The height of each bar gives a probability of a given residue to be disordered, as predicted from the available chemical shifts and the amino acid sequence. A value above 0.2 is an indication of significant predicted disorder. The colour of the bar shows whether the residue is in the well-defined core (black) or in the ill-defined residue ranges (cyan), as described in section 2 on ensemble composition.

Random coil index (RCI) for chain A:

