



# Full wwPDB X-ray Structure Validation Report ⓘ

May 21, 2020 – 03:03 am BST

PDB ID : 1J32  
Title : Aspartate Aminotransferase from Phormidium lapideum  
Authors : Kim, H.; Sawa, Y.; Hamada, K.  
Deposited on : 2003-01-17  
Resolution : 2.10 Å(reported)

This is a Full wwPDB X-ray Structure Validation Report for a publicly released PDB entry.

We welcome your comments at [validation@mail.wwpdb.org](mailto:validation@mail.wwpdb.org)

A user guide is available at

<https://www.wwpdb.org/validation/2017/XrayValidationReportHelp>

with specific help available everywhere you see the ⓘ symbol.

---

The following versions of software and data (see [references ⓘ](#)) were used in the production of this report:

MolProbity : 4.02b-467  
Mogul : 1.8.5 (274361), CSD as541be (2020)  
Xtriage (Phenix) : **NOT EXECUTED**  
EDS : **NOT EXECUTED**  
Percentile statistics : 20191225.v01 (using entries in the PDB archive December 25th 2019)  
Ideal geometry (proteins) : Engh & Huber (2001)  
Ideal geometry (DNA, RNA) : Parkinson et al. (1996)  
Validation Pipeline (wwPDB-VP) : 2.11

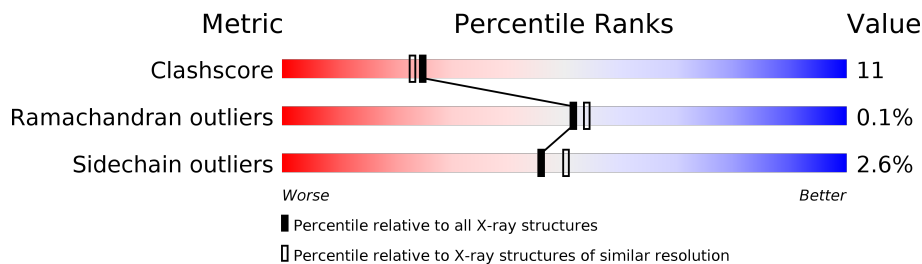
# 1 Overall quality at a glance

The following experimental techniques were used to determine the structure:

*X-RAY DIFFRACTION*

The reported resolution of this entry is 2.10 Å.

Percentile scores (ranging between 0-100) for global validation metrics of the entry are shown in the following graphic. The table shows the number of entries on which the scores are based.



Metric	Whole archive (#Entries)	Similar resolution (#Entries, resolution range(Å))
Clashscore	141614	5710 (2.10-2.10)
Ramachandran outliers	138981	5647 (2.10-2.10)
Sidechain outliers	138945	5648 (2.10-2.10)

The table below summarises the geometric issues observed across the polymeric chains and their fit to the electron density. The red, orange, yellow and green segments on the lower bar indicate the fraction of residues that contain outliers for  $\geq 3$ , 2, 1 and 0 types of geometric quality criteria respectively. A grey segment represents the fraction of residues that are not modelled. The numeric value for each fraction is indicated below the corresponding segment, with a dot representing fractions  $\leq 5\%$ .

Note EDS was not executed.

Mol	Chain	Length	Quality of chain
1	A	388	
1	B	388	

## 2 Entry composition i

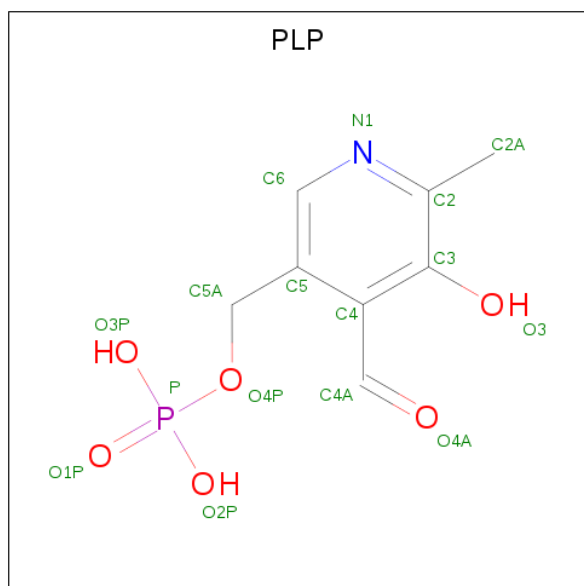
There are 3 unique types of molecules in this entry. The entry contains 6327 atoms, of which 0 are hydrogens and 0 are deuteriums.

In the tables below, the ZeroOcc column contains the number of atoms modelled with zero occupancy, the AltConf column contains the number of residues with at least one atom in alternate conformation and the Trace column contains the number of residues modelled with at most 2 atoms.

- Molecule 1 is a protein called aspartate aminotransferase.

Mol	Chain	Residues	Atoms					ZeroOcc	AltConf	Trace
			Total	C	N	O	S			
1	A	388	Total 2953	C 1876	N 495	O 561	S 21	0	0	0
1	B	388	Total 2953	C 1876	N 495	O 561	S 21	0	0	0

- Molecule 2 is PYRIDOXAL-5'-PHOSPHATE (three-letter code: PLP) (formula: C<sub>8</sub>H<sub>10</sub>NO<sub>6</sub>P).



Mol	Chain	Residues	Atoms					ZeroOcc	AltConf
			Total	C	N	O	P		
2	A	1	Total 15	C 8	N 1	O 5	P 1	0	0
2	B	1	Total 15	C 8	N 1	O 5	P 1	0	0

- Molecule 3 is water.

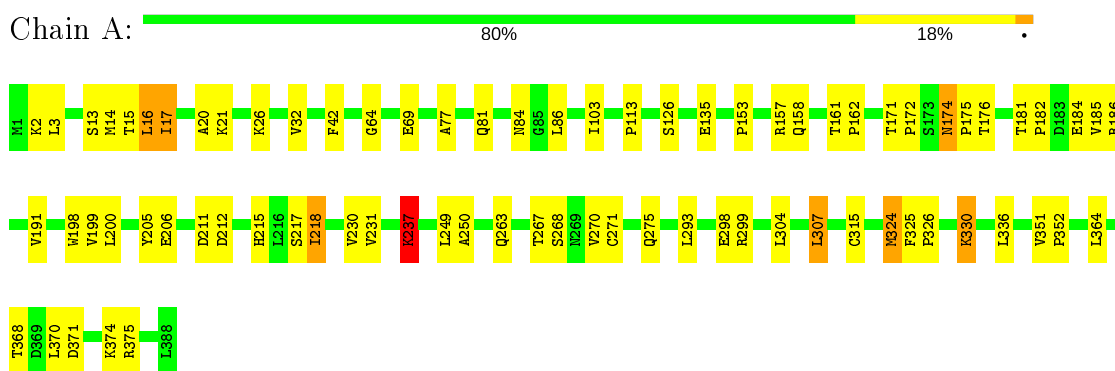
<b>Mol</b>	<b>Chain</b>	<b>Residues</b>	<b>Atoms</b>		<b>ZeroOcc</b>	<b>AltConf</b>
3	A	179	Total 179	O 179	0	0
3	B	212	Total 212	O 212	0	0

### 3 Residue-property plots [i](#)

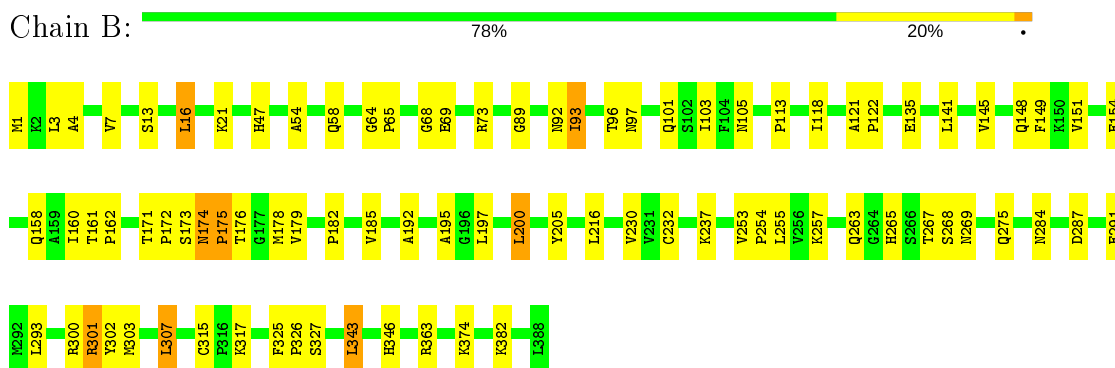
These plots are drawn for all protein, RNA and DNA chains in the entry. The first graphic for a chain summarises the proportions of the various outlier classes displayed in the second graphic. The second graphic shows the sequence view annotated by issues in geometry. Residues are color-coded according to the number of geometric quality criteria for which they contain at least one outlier: green = 0, yellow = 1, orange = 2 and red = 3 or more. Stretches of 2 or more consecutive residues without any outlier are shown as a green connector. Residues present in the sample, but not in the model, are shown in grey.

Note EDS was not executed.

- Molecule 1: aspartate aminotransferase



- Molecule 1: aspartate aminotransferase



## 4 Data and refinement statistics

Xtrriage (Phenix) and EDS were not executed - this section is therefore incomplete.

Property	Value	Source
Space group	C 2 2 21	Depositor
Cell constants a, b, c, $\alpha$ , $\beta$ , $\gamma$	120.22Å 131.26Å 107.85Å 90.00° 90.00° 90.00°	Depositor
Resolution (Å)	21.07 – 2.10	Depositor
% Data completeness (in resolution range)	5.1 (21.07-2.10)	Depositor
$R_{merge}$	0.08	Depositor
$R_{sym}$	0.08	Depositor
Refinement program	CNS 1.0	Depositor
R, $R_{free}$	0.198 , 0.238	Depositor
Estimated twinning fraction	No twinning to report.	Xtrriage
Total number of atoms	6327	wwPDB-VP
Average B, all atoms (Å <sup>2</sup> )	23.0	wwPDB-VP

## 5 Model quality [i](#)

### 5.1 Standard geometry [i](#)

Bond lengths and bond angles in the following residue types are not validated in this section: PLP

The Z score for a bond length (or angle) is the number of standard deviations the observed value is removed from the expected value. A bond length (or angle) with  $|Z| > 5$  is considered an outlier worth inspection. RMSZ is the root-mean-square of all Z scores of the bond lengths (or angles).

Mol	Chain	Bond lengths		Bond angles	
		RMSZ	# $ Z  > 5$	RMSZ	# $ Z  > 5$
1	A	0.34	1/3015 (0.0%)	0.60	1/4091 (0.0%)
1	B	0.31	0/3015	0.60	2/4091 (0.0%)
All	All	0.33	1/6030 (0.0%)	0.60	3/8182 (0.0%)

All (1) bond length outliers are listed below:

Mol	Chain	Res	Type	Atoms	Z	Observed(Å)	Ideal(Å)
1	A	237	LYS	CE-NZ	-7.38	1.30	1.49

All (3) bond angle outliers are listed below:

Mol	Chain	Res	Type	Atoms	Z	Observed(°)	Ideal(°)
1	B	174	ASN	N-CA-C	-6.17	94.35	111.00
1	A	174	ASN	N-CA-C	-5.98	94.85	111.00
1	B	173	SER	N-CA-C	5.06	124.67	111.00

There are no chirality outliers.

There are no planarity outliers.

### 5.2 Too-close contacts [i](#)

In the following table, the Non-H and H(model) columns list the number of non-hydrogen atoms and hydrogen atoms in the chain respectively. The H(added) column lists the number of hydrogen atoms added and optimized by MolProbity. The Clashes column lists the number of clashes within the asymmetric unit, whereas Symm-Clashes lists symmetry related clashes.

Mol	Chain	Non-H	H(model)	H(added)	Clashes	Symm-Clashes
1	A	2953	0	2952	58	0
1	B	2953	0	2953	72	0

*Continued on next page...*

*Continued from previous page...*

Mol	Chain	Non-H	H(model)	H(added)	Clashes	Symm-Clashes
2	A	15	0	7	1	0
2	B	15	0	6	1	0
3	A	179	0	0	4	0
3	B	212	0	0	1	0
All	All	6327	0	5918	128	0

The all-atom clashscore is defined as the number of clashes found per 1000 atoms (including hydrogen atoms). The all-atom clashscore for this structure is 11.

All (128) close contacts within the same asymmetric unit are listed below, sorted by their clash magnitude.

Atom-1	Atom-2	Interatomic distance (Å)	Clash overlap (Å)
1:B:97:ASN:H	1:B:101:GLN:HE21	1.09	0.95
1:B:13:SER:HB3	1:B:16:LEU:HD13	1.51	0.93
1:B:89:GLY:H	1:B:92:ASN:HD22	1.08	0.93
1:B:69:GLU:H	1:B:275:GLN:HE22	1.15	0.92
1:A:157:ARG:NH1	1:A:158:GLN:HE21	1.71	0.88
1:A:69:GLU:H	1:A:275:GLN:HE22	1.19	0.87
1:B:21:LYS:HE3	1:B:343:LEU:HD13	1.58	0.84
1:A:14:MET:HE2	1:A:336:LEU:HD11	1.61	0.83
1:A:157:ARG:HH12	1:A:158:GLN:HE21	1.25	0.81
1:A:230:VAL:HG11	1:A:249:LEU:HD11	1.63	0.80
1:B:192:ALA:HA	1:B:197:LEU:HD21	1.64	0.80
1:B:97:ASN:H	1:B:101:GLN:NE2	1.81	0.79
1:B:205:TYR:CZ	1:B:237:LYS:HE2	2.20	0.76
1:B:145:VAL:HG11	1:B:327:SER:HB2	1.71	0.72
1:B:172:PRO:HG2	1:B:205:TYR:HB2	1.72	0.71
1:B:172:PRO:HB3	1:B:179:VAL:HG22	1.72	0.70
1:B:185:VAL:CG2	1:B:216:LEU:HD23	2.19	0.70
1:A:371:ASP:HA	1:A:374:LYS:HE3	1.74	0.69
1:A:157:ARG:HH12	1:A:158:GLN:NE2	1.91	0.68
1:A:304:LEU:HB2	1:A:324:MET:HE1	1.77	0.66
1:B:346:HIS:CE1	1:B:382:LYS:HD2	2.32	0.65
1:B:197:LEU:H	1:B:197:LEU:HD23	1.61	0.64
1:B:89:GLY:H	1:B:92:ASN:ND2	1.90	0.63
1:B:192:ALA:HA	1:B:197:LEU:CD2	2.29	0.63
1:B:105:ASN:HD21	1:B:263:GLN:NE2	1.97	0.63
1:B:205:TYR:OH	1:B:237:LYS:HE2	1.99	0.62
1:A:182:PRO:O	1:A:186:ARG:HG3	2.00	0.62
1:A:230:VAL:HG11	1:A:249:LEU:CD1	2.30	0.62
1:B:21:LYS:HE3	1:B:343:LEU:CD1	2.29	0.62

*Continued on next page...*



*Continued from previous page...*

Atom-1	Atom-2	Interatomic distance (Å)	Clash overlap (Å)
1:A:17:ILE:HD13	1:A:17:ILE:O	2.01	0.61
1:B:145:VAL:HG12	1:B:149:PHE:CZ	2.37	0.60
1:B:195:ALA:HB3	1:B:197:LEU:HD22	1.84	0.60
1:A:13:SER:OG	1:A:16:LEU:HD13	2.02	0.59
1:B:172:PRO:HG2	1:B:205:TYR:CB	2.31	0.59
1:B:195:ALA:HB3	1:B:197:LEU:CD2	2.33	0.59
1:B:174:ASN:HB3	2:B:413:PLP:H2A1	1.85	0.58
1:A:153:PRO:HB2	1:A:191:VAL:HG21	1.86	0.58
1:A:174:ASN:HB3	2:A:413:PLP:H2A1	1.85	0.58
1:A:69:GLU:H	1:A:275:GLN:NE2	1.98	0.58
1:A:211:ASP:O	1:A:212:ASP:OD2	2.23	0.57
1:B:73:ARG:HA	1:B:93:ILE:HD11	1.87	0.57
1:B:96:THR:HB	1:B:101:GLN:HB3	1.89	0.55
1:A:267:THR:O	1:A:268:SER:HB2	2.07	0.55
1:B:185:VAL:HG21	1:B:216:LEU:HD23	1.88	0.55
1:A:161:THR:HB	1:A:162:PRO:HD2	1.89	0.55
1:A:16:LEU:O	1:A:20:ALA:HB3	2.07	0.55
1:B:118:ILE:HG23	1:B:141:LEU:HD13	1.89	0.55
1:A:77:ALA:O	1:A:81:GLN:HG3	2.07	0.54
1:B:13:SER:HB3	1:B:16:LEU:CD1	2.33	0.54
1:A:371:ASP:O	1:A:375:ARG:HD3	2.07	0.54
1:A:103:ILE:HG23	1:A:200:LEU:HD11	1.90	0.54
1:A:315:CYS:HB2	1:A:326:PRO:HB3	1.89	0.53
1:A:171:THR:HA	1:A:172:PRO:C	2.29	0.52
1:B:148:GLN:O	1:B:178:MET:HG2	2.09	0.52
1:B:200:LEU:HD12	1:B:200:LEU:C	2.30	0.52
1:A:298:GLU:HG2	1:A:370:LEU:HD11	1.91	0.52
1:A:199:VAL:HG11	1:A:218:ILE:HD13	1.92	0.52
1:A:181:THR:OG1	1:A:184:GLU:HG3	2.10	0.51
1:B:301:ARG:NH1	1:B:301:ARG:HG2	2.25	0.51
1:A:81:GLN:HA	1:A:86:LEU:O	2.11	0.50
1:A:2:LYS:HD3	1:A:3:LEU:O	2.12	0.50
1:B:200:LEU:HD13	1:B:232:CYS:SG	2.51	0.50
1:A:15:THR:C	1:A:17:ILE:H	2.16	0.49
1:B:103:ILE:HG23	1:B:200:LEU:HD21	1.95	0.49
1:B:192:ALA:O	1:B:197:LEU:HD23	2.12	0.49
1:B:267:THR:O	1:B:268:SER:HB2	2.13	0.49
1:A:26:LYS:HE3	1:A:32:VAL:HB	1.94	0.48
1:A:230:VAL:HG13	1:A:250:ALA:O	2.13	0.48
1:B:154:GLU:HB2	3:B:728:HOH:O	2.12	0.48
1:B:64:GLY:H	1:B:269:ASN:ND2	2.11	0.48

*Continued on next page...*

*Continued from previous page...*

Atom-1	Atom-2	Interatomic distance (Å)	Clash overlap (Å)
1:B:182:PRO:O	1:B:185:VAL:HG22	2.14	0.48
1:B:65:PRO:HG2	1:B:68:GLY:O	2.14	0.48
1:B:121:ALA:HA	1:B:122:PRO:C	2.34	0.48
1:B:287:ASP:O	1:B:291:GLU:HG3	2.15	0.47
1:B:113:PRO:HA	1:B:135:GLU:O	2.14	0.47
1:B:253:VAL:O	1:B:257:LYS:HG3	2.14	0.47
1:B:89:GLY:N	1:B:92:ASN:HD22	1.92	0.47
1:B:141:LEU:HD23	1:B:151:VAL:HG21	1.96	0.47
1:B:301:ARG:HG2	1:B:301:ARG:HH11	1.79	0.47
1:B:230:VAL:HG11	1:B:255:LEU:HD23	1.96	0.47
1:A:84:ASN:HB3	1:A:217:SER:OG	2.16	0.46
1:B:303:MET:HG2	1:B:307:LEU:HD22	1.97	0.46
1:B:315:CYS:HB2	1:B:326:PRO:HB3	1.98	0.46
1:B:205:TYR:CE1	1:B:237:LYS:HE2	2.50	0.46
1:B:105:ASN:HD21	1:B:263:GLN:HE21	1.61	0.46
1:B:253:VAL:HB	1:B:254:PRO:HD3	1.98	0.45
1:B:118:ILE:HD11	1:B:160:ILE:HD13	1.97	0.45
1:A:126:SER:OG	1:B:265:HIS:HD2	1.99	0.45
1:A:270:VAL:O	1:A:271:CYS:C	2.54	0.45
1:A:205:TYR:CE1	1:A:237:LYS:HG2	2.52	0.45
1:B:118:ILE:CD1	1:B:160:ILE:HD13	2.47	0.45
1:B:69:GLU:H	1:B:275:GLN:NE2	1.97	0.45
1:A:176:THR:HA	1:A:325:PHE:HB2	2.00	0.44
1:B:176:THR:HA	1:B:325:PHE:HB2	1.98	0.44
1:A:215:HIS:HA	3:A:563:HOH:O	2.18	0.44
1:A:293:LEU:O	1:A:293:LEU:HD23	2.16	0.44
1:A:307:LEU:HD21	1:A:364:LEU:HD12	2.00	0.44
1:B:175:PRO:HB3	1:B:363:ARG:HD3	1.99	0.44
1:B:3:LEU:HD22	1:B:3:LEU:N	2.34	0.43
1:B:300:ARG:HH12	1:B:317:LYS:HE2	1.83	0.43
1:B:302:TYR:OH	1:B:374:LYS:HG3	2.19	0.43
1:A:212:ASP:HA	3:A:685:HOH:O	2.19	0.43
1:B:161:THR:HB	1:B:162:PRO:HD2	1.99	0.43
1:A:42:PHE:H	1:A:42:PHE:HD2	1.67	0.42
1:A:17:ILE:HD13	1:A:17:ILE:C	2.39	0.42
1:B:105:ASN:ND2	1:B:263:GLN:HE21	2.17	0.42
1:B:47:HIS:HD2	1:B:284:ASN:HD22	1.67	0.42
1:A:64:GLY:HA3	3:A:531:HOH:O	2.18	0.42
1:B:154:GLU:O	1:B:158:GLN:HG2	2.20	0.42
1:B:171:THR:HA	1:B:172:PRO:C	2.40	0.42
1:A:15:THR:C	1:A:17:ILE:N	2.72	0.42

*Continued on next page...*

Continued from previous page...

Atom-1	Atom-2	Interatomic distance (Å)	Clash overlap (Å)
1:A:182:PRO:HB2	1:A:186:ARG:NH1	2.34	0.41
1:A:14:MET:CE	1:A:336:LEU:HD11	2.41	0.41
1:B:346:HIS:HE1	1:B:382:LYS:HD2	1.82	0.41
1:A:17:ILE:O	1:A:21:LYS:HB2	2.20	0.41
1:A:299:ARG:HD3	1:A:368:THR:O	2.20	0.41
1:A:298:GLU:CG	1:A:370:LEU:HD11	2.50	0.41
1:B:13:SER:CB	1:B:16:LEU:HD13	2.34	0.41
1:B:54:ALA:O	1:B:58:GLN:HG3	2.21	0.41
1:A:263:GLN:HB2	1:A:263:GLN:HE21	1.71	0.41
1:A:330:LYS:HD3	3:A:535:HOH:O	2.21	0.41
1:A:351:VAL:HA	1:A:352:PRO:HD3	1.96	0.41
1:A:113:PRO:HA	1:A:135:GLU:O	2.21	0.40
1:A:371:ASP:HA	1:A:374:LYS:CE	2.47	0.40
1:A:198:TRP:HE1	1:B:1:MET:CE	2.35	0.40
1:B:4:ALA:O	1:B:7:VAL:HG12	2.22	0.40
1:A:185:VAL:HG13	1:A:218:ILE:HG13	2.04	0.40
1:A:230:VAL:HG12	1:A:231:VAL:N	2.36	0.40

There are no symmetry-related clashes.

## 5.3 Torsion angles [i](#)

### 5.3.1 Protein backbone [i](#)

In the following table, the Percentiles column shows the percent Ramachandran outliers of the chain as a percentile score with respect to all X-ray entries followed by that with respect to entries of similar resolution.

The Analysed column shows the number of residues for which the backbone conformation was analysed, and the total number of residues.

Mol	Chain	Analysed	Favoured	Allowed	Outliers	Percentiles
1	A	386/388 (100%)	374 (97%)	11 (3%)	1 (0%)	41 41
1	B	386/388 (100%)	377 (98%)	9 (2%)	0	100 100
All	All	772/776 (100%)	751 (97%)	20 (3%)	1 (0%)	51 54

All (1) Ramachandran outliers are listed below:

Mol	Chain	Res	Type
1	A	16	LEU

### 5.3.2 Protein sidechains [i](#)

In the following table, the Percentiles column shows the percent sidechain outliers of the chain as a percentile score with respect to all X-ray entries followed by that with respect to entries of similar resolution.

The Analysed column shows the number of residues for which the sidechain conformation was analysed, and the total number of residues.

Mol	Chain	Analysed	Rotameric	Outliers	Percentiles	
1	A	312/312 (100%)	304 (97%)	8 (3%)	46	50
1	B	312/312 (100%)	304 (97%)	8 (3%)	46	50
All	All	624/624 (100%)	608 (97%)	16 (3%)	46	50

All (16) residues with a non-rotameric sidechain are listed below:

Mol	Chain	Res	Type
1	A	17	ILE
1	A	175	PRO
1	A	206	GLU
1	A	218	ILE
1	A	237	LYS
1	A	307	LEU
1	A	324	MET
1	A	330	LYS
1	B	16	LEU
1	B	93	ILE
1	B	175	PRO
1	B	200	LEU
1	B	293	LEU
1	B	301	ARG
1	B	307	LEU
1	B	343	LEU

Some sidechains can be flipped to improve hydrogen bonding and reduce clashes. All (27) such sidechains are listed below:

Mol	Chain	Res	Type
1	A	58	GLN
1	A	81	GLN
1	A	97	ASN
1	A	105	ASN
1	A	155	GLN
1	A	158	GLN

*Continued on next page...*

*Continued from previous page...*

Mol	Chain	Res	Type
1	A	215	HIS
1	A	263	GLN
1	A	265	HIS
1	A	275	GLN
1	A	286	GLN
1	A	308	ASN
1	A	345	GLN
1	B	58	GLN
1	B	78	GLN
1	B	92	ASN
1	B	97	ASN
1	B	101	GLN
1	B	155	GLN
1	B	215	HIS
1	B	263	GLN
1	B	265	HIS
1	B	269	ASN
1	B	275	GLN
1	B	284	ASN
1	B	286	GLN
1	B	346	HIS

### 5.3.3 RNA [i](#)

There are no RNA molecules in this entry.

### 5.4 Non-standard residues in protein, DNA, RNA chains [i](#)

There are no non-standard protein/DNA/RNA residues in this entry.

### 5.5 Carbohydrates [i](#)

There are no carbohydrates in this entry.

### 5.6 Ligand geometry [i](#)

2 ligands are modelled in this entry.

In the following table, the Counts columns list the number of bonds (or angles) for which Mogul statistics could be retrieved, the number of bonds (or angles) that are observed in the model and the number of bonds (or angles) that are defined in the Chemical Component Dictionary. The

Link column lists molecule types, if any, to which the group is linked. The Z score for a bond length (or angle) is the number of standard deviations the observed value is removed from the expected value. A bond length (or angle) with  $|Z| > 2$  is considered an outlier worth inspection. RMSZ is the root-mean-square of all Z scores of the bond lengths (or angles).

Mol	Type	Chain	Res	Link	Bond lengths			Bond angles		
					Counts	RMSZ	# Z  > 2	Counts	RMSZ	# Z  > 2
2	PLP	B	413	1	15,15,16	1.65	4 (26%)	20,22,23	2.12	5 (25%)
2	PLP	A	413	1	15,15,16	1.70	3 (20%)	20,22,23	2.05	4 (20%)

In the following table, the Chirals column lists the number of chiral outliers, the number of chiral centers analysed, the number of these observed in the model and the number defined in the Chemical Component Dictionary. Similar counts are reported in the Torsion and Rings columns. '-' means no outliers of that kind were identified.

Mol	Type	Chain	Res	Link	Chirals	Torsions	Rings
2	PLP	B	413	1	-	3/6/6/8	0/1/1/1
2	PLP	A	413	1	-	3/6/6/8	0/1/1/1

All (7) bond length outliers are listed below:

Mol	Chain	Res	Type	Atoms	Z	Observed(Å)	Ideal(Å)
2	A	413	PLP	C5-C4	3.67	1.44	1.40
2	B	413	PLP	C5-C4	3.46	1.44	1.40
2	B	413	PLP	C3-C2	-2.97	1.37	1.40
2	A	413	PLP	C3-C2	-2.87	1.38	1.40
2	A	413	PLP	C2-N1	2.52	1.38	1.33
2	B	413	PLP	C2-N1	2.40	1.38	1.33
2	B	413	PLP	P-O3P	-2.11	1.46	1.54

All (9) bond angle outliers are listed below:

Mol	Chain	Res	Type	Atoms	Z	Observed(°)	Ideal(°)
2	B	413	PLP	O4P-C5A-C5	7.03	122.74	109.35
2	A	413	PLP	O4P-C5A-C5	6.69	122.09	109.35
2	A	413	PLP	O2P-P-O4P	-2.90	99.02	106.73
2	A	413	PLP	C5A-C5-C6	-2.64	115.03	119.37
2	B	413	PLP	C5A-C5-C6	-2.57	115.15	119.37
2	B	413	PLP	O2P-P-O4P	-2.51	100.06	106.73
2	B	413	PLP	C5-C6-N1	-2.17	120.20	123.82
2	A	413	PLP	C5-C6-N1	-2.10	120.32	123.82
2	B	413	PLP	C6-N1-C2	2.06	122.98	119.17

There are no chirality outliers.

All (6) torsion outliers are listed below:

Mol	Chain	Res	Type	Atoms
2	B	413	PLP	C4-C5-C5A-O4P
2	B	413	PLP	C6-C5-C5A-O4P
2	A	413	PLP	C5A-O4P-P-O1P
2	A	413	PLP	C5A-O4P-P-O2P
2	A	413	PLP	C5A-O4P-P-O3P
2	B	413	PLP	C5A-O4P-P-O3P

There are no ring outliers.

2 monomers are involved in 2 short contacts:

Mol	Chain	Res	Type	Clashes	Symm-Clashes
2	B	413	PLP	1	0
2	A	413	PLP	1	0

## 5.7 Other polymers [i](#)

There are no such residues in this entry.

## 5.8 Polymer linkage issues [i](#)

There are no chain breaks in this entry.

## 6 Fit of model and data

### 6.1 Protein, DNA and RNA chains

EDS was not executed - this section is therefore empty.

### 6.2 Non-standard residues in protein, DNA, RNA chains

EDS was not executed - this section is therefore empty.

### 6.3 Carbohydrates

EDS was not executed - this section is therefore empty.

### 6.4 Ligands

EDS was not executed - this section is therefore empty.

### 6.5 Other polymers

EDS was not executed - this section is therefore empty.