



Full wwPDB X-ray Structure Validation Report ⓘ

Jun 11, 2024 – 07:26 PM EDT

PDB ID : 1J3I
Title : Wild-type Plasmodium falciparum dihydrofolate reductase-thymidylate synthase (PfDHFR-TS) complexed with WR99210, NADPH, and dUMP
Authors : Yuvaniyama, J.; Chitnumsub, P.; Kamchonwongpaisan, S.; Vanichtanankul, J.; Sirawaraporn, W.; Taylor, P.; Walkinshaw, M.; Yuthavong, Y.
Deposited on : 2003-02-03
Resolution : 2.33 Å(reported)

This is a Full wwPDB X-ray Structure Validation Report for a publicly released PDB entry.

We welcome your comments at validation@mail.wwpdb.org

A user guide is available at

<https://www.wwpdb.org/validation/2017/XrayValidationReportHelp>

with specific help available everywhere you see the ⓘ symbol.

The types of validation reports are described at

<http://www.wwpdb.org/validation/2017/FAQs#types>.

The following versions of software and data (see [references ⓘ](#)) were used in the production of this report:

MolProbity : 4.02b-467
Mogul : 2022.3.0, CSD as543be (2022)
Xtriage (Phenix) : 1.20.1
EDS : 2.36.2
buster-report : 1.1.7 (2018)
Percentile statistics : 20191225.v01 (using entries in the PDB archive December 25th 2019)
Refmac : 5.8.0158
CCP4 : 7.0.044 (Gargrove)
Ideal geometry (proteins) : Engh & Huber (2001)
Ideal geometry (DNA, RNA) : Parkinson et al. (1996)
Validation Pipeline (wwPDB-VP) : 2.36.2

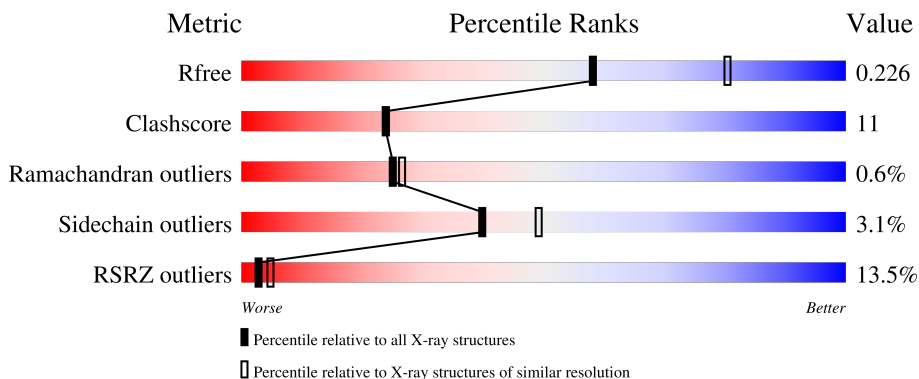
1 Overall quality at a glance

The following experimental techniques were used to determine the structure:

X-RAY DIFFRACTION

The reported resolution of this entry is 2.33 Å.

Percentile scores (ranging between 0-100) for global validation metrics of the entry are shown in the following graphic. The table shows the number of entries on which the scores are based.



Metric	Whole archive (#Entries)	Similar resolution (#Entries, resolution range(Å))
R_{free}	130704	2096 (2.36-2.32)
Clashscore	141614	2193 (2.36-2.32)
Ramachandran outliers	138981	2159 (2.36-2.32)
Sidechain outliers	138945	2160 (2.36-2.32)
RSRZ outliers	127900	2067 (2.36-2.32)

The table below summarises the geometric issues observed across the polymeric chains and their fit to the electron density. The red, orange, yellow and green segments of the lower bar indicate the fraction of residues that contain outliers for ≥ 3 , 2, 1 and 0 types of geometric quality criteria respectively. A grey segment represents the fraction of residues that are not modelled. The numeric value for each fraction is indicated below the corresponding segment, with a dot representing fractions $\leq 5\%$. The upper red bar (where present) indicates the fraction of residues that have poor fit to the electron density. The numeric value is given above the bar.

Mol	Chain	Length	Quality of chain
1	A	280	 11% 60% 17% 20%
1	B	280	 28% 47% 32% 19%
2	C	328	 6% 84% 14% ..
2	D	328	 6% 83% 16% .

2 Entry composition

There are 6 unique types of molecules in this entry. The entry contains 10135 atoms, of which 0 are hydrogens and 0 are deuteriums.

In the tables below, the ZeroOcc column contains the number of atoms modelled with zero occupancy, the AltConf column contains the number of residues with at least one atom in alternate conformation and the Trace column contains the number of residues modelled with at most 2 atoms.

- Molecule 1 is a protein called Bifunctional dihydrofolate reductase-thymidylate synthase.

Mol	Chain	Residues	Atoms					ZeroOcc	AltConf	Trace
			Total	C	N	O	S			
1	A	223	1847	1195	297	341	14	0	0	0
1	B	226	1866	1205	300	348	13	0	0	0

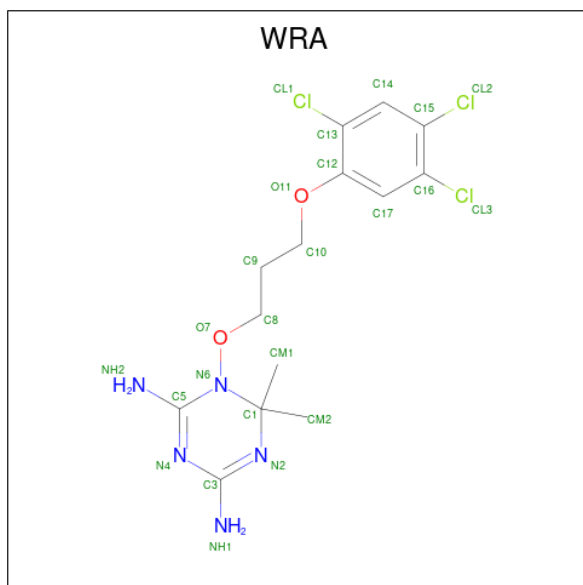
There are 4 discrepancies between the modelled and reference sequences:

Chain	Residue	Modelled	Actual	Comment	Reference
A	59	CYS	ARG	SEE REMARK 999	UNP P13922
A	108	SER	ASN	SEE REMARK 999	UNP P13922
B	59	CYS	ARG	SEE REMARK 999	UNP P13922
B	108	SER	ASN	SEE REMARK 999	UNP P13922

- Molecule 2 is a protein called Bifunctional dihydrofolate reductase-thymidylate synthase.

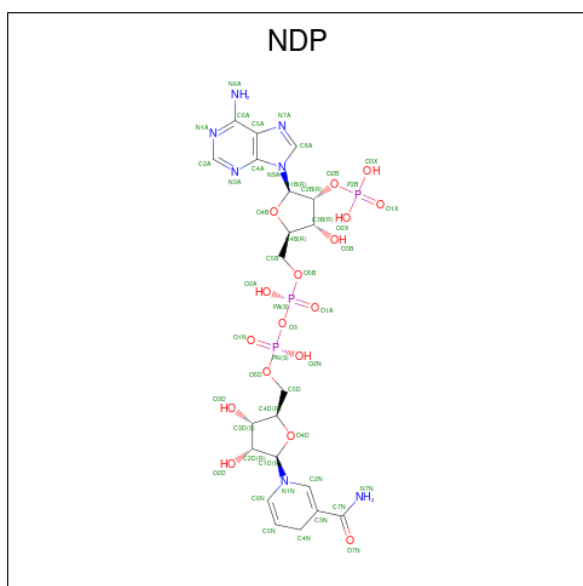
Mol	Chain	Residues	Atoms					ZeroOcc	AltConf	Trace
			Total	C	N	O	S			
2	C	327	2721	1751	457	498	15	0	0	0
2	D	328	2729	1755	458	501	15	0	0	0

- Molecule 3 is 6,6-DIMETHYL-1-[3-(2,4,5-TRICHLOROPHENOXY)PROPOXY]-1,6-DIHYDRO-1,3,5-TRIAZINE-2,4-DIAMINE (three-letter code: WRA) (formula: C₁₄H₁₈Cl₃N₅O₂).



Mol	Chain	Residues	Atoms				ZeroOcc	AltConf	
			Total	C	Cl	N			O
3	A	1	Total	C	Cl	N	O	0	0
			24	14	3	5	2		
3	B	1	Total	C	Cl	N	O	0	0
			24	14	3	5	2		

- Molecule 4 is NADPH DIHYDRO-NICOTINAMIDE-ADENINE-DINUCLEOTIDE PHOSPHATE (three-letter code: NDP) (formula: $C_{21}H_{30}N_7O_{17}P_3$).



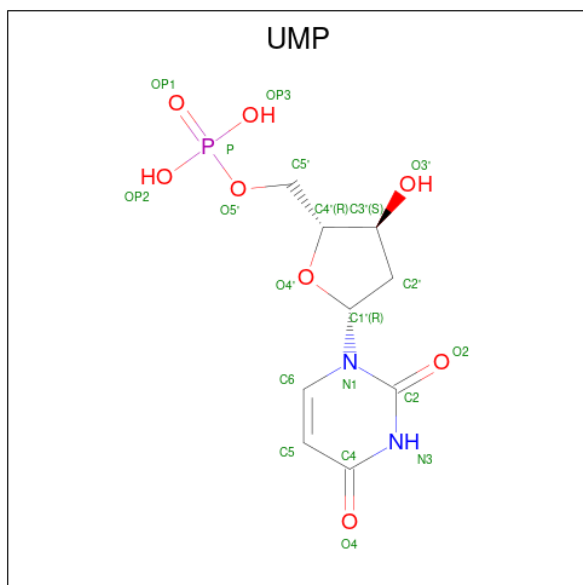
Mol	Chain	Residues	Atoms				ZeroOcc	AltConf	
			Total	C	N	O			P
4	A	1	Total	C	N	O	P	0	0
			48	21	7	17	3		

Continued on next page...

Continued from previous page...

Mol	Chain	Residues	Atoms				ZeroOcc	AltConf	
			Total	C	N	O			P
4	B	1	48	21	7	17	3	0	0

- Molecule 5 is 2'-DEOXYURIDINE 5'-MONOPHOSPHATE (three-letter code: UMP) (formula: C₉H₁₃N₂O₈P).



Mol	Chain	Residues	Atoms				ZeroOcc	AltConf	
			Total	C	N	O			P
5	C	1	20	9	2	8	1	0	0
5	D	1	20	9	2	8	1	0	0

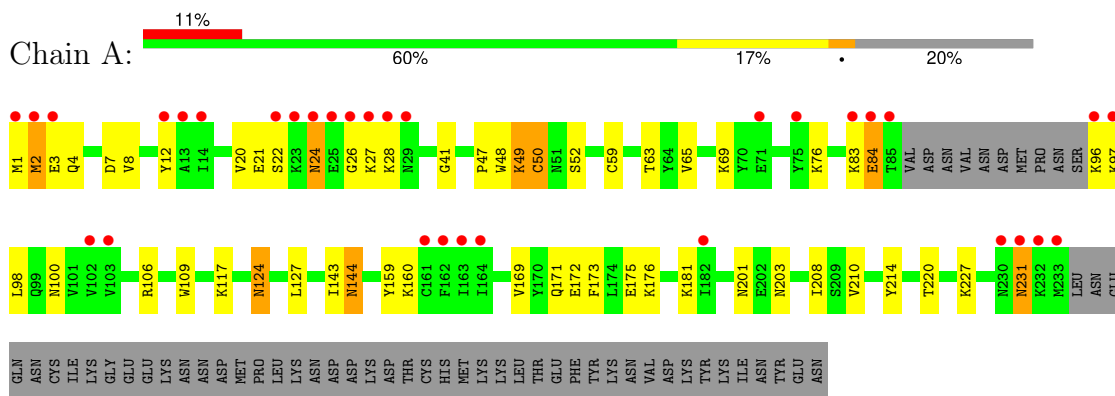
- Molecule 6 is water.

Mol	Chain	Residues	Atoms		ZeroOcc	AltConf
6	A	156	Total	O	0	0
			156	156		
6	B	51	Total	O	0	0
			51	51		
6	C	289	Total	O	0	0
			289	289		
6	D	292	Total	O	0	0
			292	292		

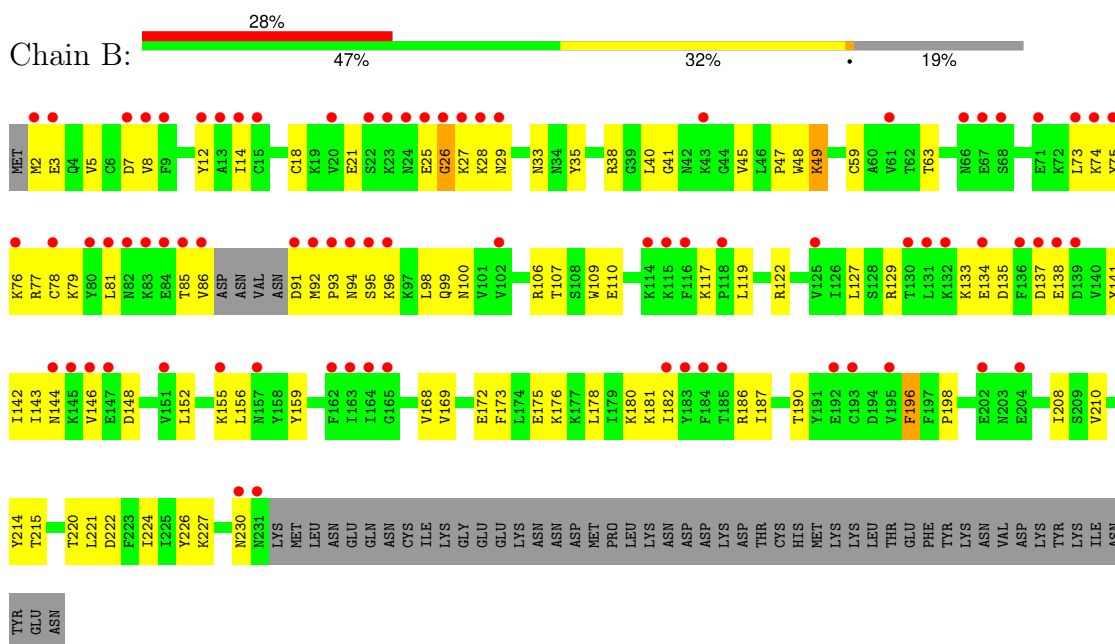
3 Residue-property plots [i](#)

These plots are drawn for all protein, RNA, DNA and oligosaccharide chains in the entry. The first graphic for a chain summarises the proportions of the various outlier classes displayed in the second graphic. The second graphic shows the sequence view annotated by issues in geometry and electron density. Residues are color-coded according to the number of geometric quality criteria for which they contain at least one outlier: green = 0, yellow = 1, orange = 2 and red = 3 or more. A red dot above a residue indicates a poor fit to the electron density ($RSRZ > 2$). Stretches of 2 or more consecutive residues without any outlier are shown as a green connector. Residues present in the sample, but not in the model, are shown in grey.

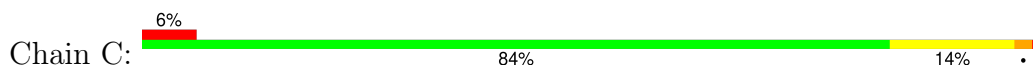
- Molecule 1: Bifunctional dihydrofolate reductase-thymidylate synthase

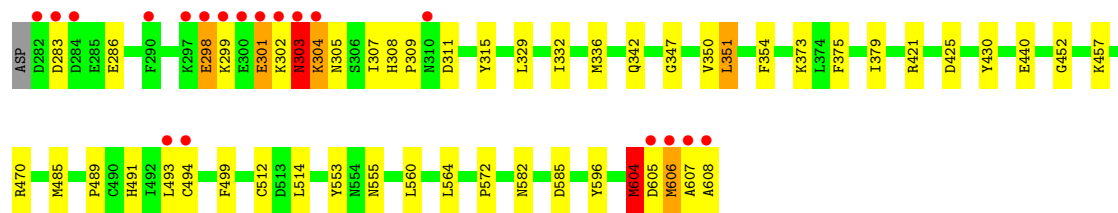


- Molecule 1: Bifunctional dihydrofolate reductase-thymidylate synthase

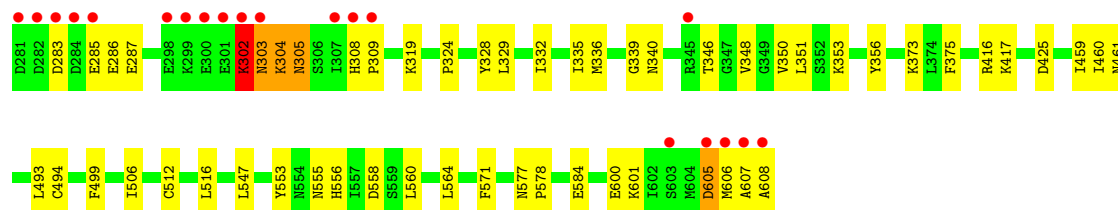
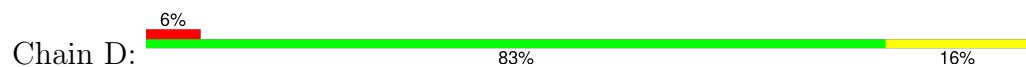


- Molecule 2: Bifunctional dihydrofolate reductase-thymidylate synthase





● Molecule 2: Bifunctional dihydrofolate reductase-thymidylate synthase



4 Data and refinement statistics

Property	Value	Source
Space group	P 21 21 21	Depositor
Cell constants a, b, c, α , β , γ	59.12Å 157.25Å 165.44Å 90.00° 90.00° 90.00°	Depositor
Resolution (Å)	29.40 – 2.33 29.40 – 2.33	Depositor EDS
% Data completeness (in resolution range)	96.7 (29.40-2.33) 96.8 (29.40-2.33)	Depositor EDS
R_{merge}	(Not available)	Depositor
R_{sym}	0.06	Depositor
$\langle I/\sigma(I) \rangle$ ¹	3.70 (at 2.34Å)	Xtrriage
Refinement program	CNS 1.1	Depositor
R, R_{free}	0.185 , 0.236 0.178 , 0.226	Depositor DCC
R_{free} test set	3211 reflections (4.99%)	wwPDB-VP
Wilson B-factor (Å ²)	38.2	Xtrriage
Anisotropy	0.440	Xtrriage
Bulk solvent k_{sol} (e/Å ³), B_{sol} (Å ²)	0.32 , 54.9	EDS
L-test for twinning ²	$\langle L \rangle = 0.50$, $\langle L^2 \rangle = 0.33$	Xtrriage
Estimated twinning fraction	0.008 for -h,l,k	Xtrriage
F_o, F_c correlation	0.95	EDS
Total number of atoms	10135	wwPDB-VP
Average B, all atoms (Å ²)	49.0	wwPDB-VP

Xtrriage's analysis on translational NCS is as follows: *The largest off-origin peak in the Patterson function is 3.51% of the height of the origin peak. No significant pseudotranslation is detected.*

¹Intensities estimated from amplitudes.

²Theoretical values of $\langle |L| \rangle$, $\langle L^2 \rangle$ for acentric reflections are 0.5, 0.333 respectively for untwinned datasets, and 0.375, 0.2 for perfectly twinned datasets.

5 Model quality [i](#)

5.1 Standard geometry [i](#)

Bond lengths and bond angles in the following residue types are not validated in this section: NDP, UMP, WRA

The Z score for a bond length (or angle) is the number of standard deviations the observed value is removed from the expected value. A bond length (or angle) with $|Z| > 5$ is considered an outlier worth inspection. RMSZ is the root-mean-square of all Z scores of the bond lengths (or angles).

Mol	Chain	Bond lengths		Bond angles	
		RMSZ	# Z >5	RMSZ	# Z >5
1	A	0.55	0/1881	0.78	1/2527 (0.0%)
1	B	0.45	0/1901	0.70	0/2558
2	C	0.61	1/2792 (0.0%)	0.85	5/3777 (0.1%)
2	D	0.60	1/2800 (0.0%)	0.85	6/3788 (0.2%)
All	All	0.57	2/9374 (0.0%)	0.81	12/12650 (0.1%)

All (2) bond length outliers are listed below:

Mol	Chain	Res	Type	Atoms	Z	Observed(Å)	Ideal(Å)
2	C	494	CYS	CB-SG	-6.37	1.71	1.82
2	D	494	CYS	CB-SG	-5.83	1.72	1.81

All (12) bond angle outliers are listed below:

Mol	Chain	Res	Type	Atoms	Z	Observed(°)	Ideal(°)
2	C	303	ASN	N-CA-C	-10.67	82.20	111.00
2	D	303	ASN	N-CA-C	-10.47	82.73	111.00
2	C	304	LYS	N-CA-C	7.40	130.99	111.00
2	D	305	ASN	N-CA-C	7.07	130.08	111.00
1	A	231	ASN	N-CA-C	6.43	128.37	111.00
2	D	351	LEU	N-CA-C	-6.19	94.28	111.00
2	D	302	LYS	N-CA-C	-6.15	94.40	111.00
2	C	351	LEU	N-CA-C	-5.91	95.04	111.00
2	C	604	MET	N-CA-C	-5.56	96.00	111.00
2	C	301	GLU	CA-CB-CG	-5.47	101.38	113.40
2	D	425	ASP	N-CA-C	-5.10	97.23	111.00
2	D	605	ASP	N-CA-C	5.10	124.76	111.00

There are no chirality outliers.

There are no planarity outliers.

5.2 Too-close contacts [i](#)

In the following table, the Non-H and H(model) columns list the number of non-hydrogen atoms and hydrogen atoms in the chain respectively. The H(added) column lists the number of hydrogen atoms added and optimized by MolProbity. The Clashes column lists the number of clashes within the asymmetric unit, whereas Symm-Clashes lists symmetry-related clashes.

Mol	Chain	Non-H	H(model)	H(added)	Clashes	Symm-Clashes
1	A	1847	0	1881	51	0
1	B	1866	0	1887	68	0
2	C	2721	0	2642	47	0
2	D	2729	0	2646	43	0
3	A	24	0	18	1	0
3	B	24	0	18	1	0
4	A	48	0	26	4	0
4	B	48	0	26	5	0
5	C	20	0	11	1	0
5	D	20	0	11	0	0
6	A	156	0	0	6	0
6	B	51	0	0	3	0
6	C	289	0	0	8	0
6	D	292	0	0	6	0
All	All	10135	0	9166	206	0

The all-atom clashscore is defined as the number of clashes found per 1000 atoms (including hydrogen atoms). The all-atom clashscore for this structure is 11.

All (206) close contacts within the same asymmetric unit are listed below, sorted by their clash magnitude.

Atom-1	Atom-2	Interatomic distance (Å)	Clash overlap (Å)
2:C:301:GLU:O	2:C:301:GLU:HG2	1.61	0.96
1:A:59:CYS:HB2	6:A:1691:HOH:O	1.66	0.94
2:D:302:LYS:O	2:D:302:LYS:HG3	1.65	0.94
1:B:210:VAL:HB	6:B:1248:HOH:O	1.73	0.88
2:D:555:ASN:CB	2:D:607:ALA:HB2	2.06	0.86
1:A:127:LEU:HD23	1:A:143:ILE:HG13	1.59	0.83
1:A:21:GLU:O	1:A:21:GLU:HG2	1.84	0.78
2:C:304:LYS:HD3	6:C:1261:HOH:O	1.86	0.76
2:D:461:ASN:HB3	6:D:1458:HOH:O	1.86	0.75
1:A:59:CYS:SG	6:A:1216:HOH:O	2.43	0.75
2:C:555:ASN:HD22	2:C:606:MET:HA	1.53	0.74
2:C:301:GLU:O	2:C:301:GLU:CG	2.33	0.73
2:D:555:ASN:HB3	2:D:607:ALA:HB2	1.71	0.72

Continued on next page...

Continued from previous page...

Atom-1	Atom-2	Interatomic distance (Å)	Clash overlap (Å)
1:B:100:ASN:OD1	1:B:159:TYR:HB3	1.90	0.72
1:A:1:MET:HG2	1:A:2:MET:H	1.53	0.72
2:D:555:ASN:HB2	2:D:607:ALA:HB2	1.71	0.72
1:A:48:TRP:O	1:A:49:LYS:HB2	1.90	0.71
1:A:24:ASN:HD22	1:A:24:ASN:N	1.89	0.70
1:B:2:MET:HG2	1:B:3:GLU:H	1.57	0.70
1:B:129:ARG:HB2	1:B:129:ARG:NH1	2.07	0.69
1:B:129:ARG:HB2	1:B:129:ARG:HH11	1.58	0.67
1:B:28:LYS:HG2	1:B:29:ASN:N	2.10	0.67
1:A:106:ARG:HG2	1:A:106:ARG:HH11	1.58	0.67
1:B:12:TYR:CD1	1:B:181:LYS:HB2	2.30	0.66
1:A:41:GLY:HA2	1:A:47:PRO:HD3	1.79	0.65
2:D:558:ASP:OD2	2:D:608:ALA:HB3	1.97	0.65
2:D:493:LEU:C	2:D:493:LEU:HD12	2.18	0.64
2:C:491:HIS:ND1	6:C:1507:HOH:O	2.19	0.64
4:A:610:NDP:H52A	4:A:610:NDP:H8A	1.79	0.64
1:A:20:VAL:HG12	1:A:22:SER:H	1.63	0.64
1:A:210:VAL:HB	6:A:1697:HOH:O	1.98	0.64
1:B:230:ASN:HA	6:B:1010:HOH:O	1.99	0.62
1:B:28:LYS:HG2	1:B:29:ASN:H	1.65	0.62
1:B:168:VAL:HG23	4:B:710:NDP:O2N	2.00	0.62
1:B:48:TRP:O	1:B:49:LYS:HB2	2.00	0.61
2:C:299:LYS:HG3	2:C:301:GLU:H	1.65	0.61
3:B:709:WRA:H81	3:B:709:WRA:HH22	1.66	0.61
2:C:302:LYS:C	2:C:303:ASN:O	2.29	0.61
1:B:92:MET:HG2	1:B:95:SER:H	1.66	0.60
2:C:286:GLU:OE2	2:D:319:LYS:HD3	2.01	0.60
2:C:605:ASP:CG	2:C:608:ALA:HA	2.22	0.60
2:C:604:MET:HA	6:C:1575:HOH:O	2.01	0.60
1:B:98:LEU:HD12	1:B:99:GLN:H	1.67	0.60
1:A:106:ARG:HD3	4:A:610:NDP:O2X	2.02	0.60
2:D:283:ASP:CB	2:D:286:GLU:HG3	2.32	0.59
2:C:347:GLY:O	6:C:1271:HOH:O	2.17	0.59
1:B:146:VAL:HG21	1:B:176:LYS:HE3	1.85	0.59
2:D:283:ASP:HB3	2:D:286:GLU:HG3	1.84	0.59
1:A:24:ASN:N	1:A:24:ASN:ND2	2.49	0.58
2:C:307:ILE:HD12	2:C:307:ILE:N	2.18	0.58
1:A:159:TYR:CE2	1:A:160:LYS:HE3	2.39	0.57
1:B:7:ASP:HA	1:B:180:LYS:HE2	1.86	0.57
1:B:78:CYS:SG	1:B:85:THR:HA	2.45	0.57
1:A:24:ASN:ND2	1:A:24:ASN:H	2.02	0.56

Continued on next page...

Continued from previous page...

Atom-1	Atom-2	Interatomic distance (Å)	Clash overlap (Å)
1:B:8:VAL:HG22	1:B:76:LYS:HE3	1.88	0.56
2:C:607:ALA:O	2:C:608:ALA:HB3	2.06	0.56
1:A:106:ARG:HG2	1:A:106:ARG:NH1	2.21	0.55
1:B:109:TRP:CZ2	1:B:117:LYS:HG2	2.40	0.55
1:B:2:MET:HG2	1:B:3:GLU:N	2.20	0.55
2:D:328:TYR:CZ	2:D:332:ILE:HD11	2.41	0.54
2:C:375:PHE:HD1	6:C:1564:HOH:O	1.89	0.54
1:B:59:CYS:O	1:B:63:THR:HG23	2.08	0.54
1:B:129:ARG:HH11	1:B:129:ARG:CB	2.21	0.54
1:B:198:PRO:HD3	6:B:1003:HOH:O	2.08	0.54
2:C:493:LEU:HD12	2:C:493:LEU:C	2.28	0.53
1:B:74:LYS:O	1:B:75:TYR:C	2.43	0.53
2:D:346:THR:OG1	2:D:348:VAL:HG23	2.08	0.53
2:C:342:GLN:HE21	2:D:499:PHE:HD1	1.56	0.53
2:C:572:PRO:HB3	2:C:596:TYR:HA	1.91	0.53
1:B:106:ARG:HE	4:B:710:NDP:P2B	2.31	0.52
1:B:86:VAL:HG21	1:B:155:LYS:C	2.30	0.52
2:D:512:CYS:SG	2:D:547:LEU:HD22	2.50	0.52
2:D:553:TYR:HB3	2:D:555:ASN:OD1	2.10	0.52
1:B:94:ASN:O	1:B:95:SER:HB3	2.10	0.52
2:C:329:LEU:HD22	2:C:564:LEU:HD12	1.92	0.52
1:B:173:PHE:CD1	1:B:178:LEU:HD12	2.44	0.52
2:C:452:GLY:HA2	6:C:1407:HOH:O	2.10	0.52
2:C:607:ALA:O	2:C:608:ALA:CB	2.58	0.52
1:A:21:GLU:O	1:A:22:SER:C	2.47	0.52
1:A:4:GLN:HB3	6:A:1658:HOH:O	2.10	0.51
2:C:305:ASN:HB2	2:C:307:ILE:HD11	1.92	0.51
2:D:584:GLU:HB2	6:D:1464:HOH:O	2.10	0.51
1:A:1:MET:CG	1:A:2:MET:H	2.23	0.51
1:B:41:GLY:HA2	1:B:47:PRO:HD3	1.93	0.51
1:A:1:MET:HG2	1:A:2:MET:N	2.24	0.51
1:A:12:TYR:HD1	1:A:181:LYS:HB2	1.75	0.50
1:A:208:ILE:HD13	1:A:227:LYS:HD2	1.92	0.50
1:B:196:PHE:CD1	1:B:196:PHE:N	2.79	0.50
2:C:308:HIS:O	2:C:311:ASP:HB2	2.12	0.50
2:D:555:ASN:CB	2:D:607:ALA:CB	2.87	0.50
1:A:160:LYS:HE2	2:D:285:GLU:OE1	2.12	0.50
2:D:600:GLU:HG3	6:D:1078:HOH:O	2.12	0.50
1:A:124:ASN:HD22	1:A:124:ASN:N	2.11	0.49
2:D:335:ILE:O	2:D:339:GLY:N	2.38	0.49
2:D:324:PRO:HB2	2:D:571:PHE:HE2	1.78	0.49

Continued on next page...

Continued from previous page...

Atom-1	Atom-2	Interatomic distance (Å)	Clash overlap (Å)
1:B:152:LEU:O	1:B:156:LEU:HD12	2.12	0.49
1:A:109:TRP:CE2	1:A:117:LYS:HD2	2.48	0.49
2:C:299:LYS:HE3	2:C:301:GLU:HB3	1.95	0.49
2:C:354:PHE:CE2	2:D:506:ILE:HG13	2.47	0.49
3:A:609:WRA:H81	3:A:609:WRA:HH22	1.78	0.49
1:B:8:VAL:HA	1:B:76:LYS:HE3	1.93	0.49
1:B:21:GLU:HB3	1:B:190:THR:HG21	1.94	0.49
1:B:186:ARG:HB2	1:B:222:ASP:OD1	2.13	0.49
1:B:109:TRP:O	1:B:117:LYS:HD2	2.12	0.48
1:B:214:TYR:O	1:B:220:THR:HA	2.14	0.48
1:B:12:TYR:CE1	1:B:180:LYS:HD2	2.49	0.48
1:A:12:TYR:CD1	1:A:181:LYS:HB2	2.49	0.48
2:C:582:ASN:HB3	6:C:1348:HOH:O	2.13	0.48
2:C:298:GLU:H	2:C:298:GLU:HG3	1.29	0.48
2:D:285:GLU:C	2:D:287:GLU:H	2.16	0.47
2:C:350:VAL:HG12	2:C:553:TYR:CD1	2.50	0.47
2:D:350:VAL:HG12	2:D:553:TYR:CD1	2.50	0.47
1:B:172:GLU:HA	1:B:175:GLU:CG	2.45	0.47
2:D:459:ILE:HG13	2:D:460:ILE:N	2.30	0.47
2:C:421:ARG:HD2	2:C:425:ASP:HB3	1.96	0.47
1:A:24:ASN:OD1	1:A:27:LYS:HA	2.15	0.47
1:B:8:VAL:HA	1:B:76:LYS:CE	2.45	0.47
1:B:12:TYR:HD1	1:B:181:LYS:HB2	1.77	0.47
2:C:605:ASP:OD2	2:C:608:ALA:HA	2.15	0.47
1:B:106:ARG:HG2	1:B:110:GLU:OE2	2.16	0.46
1:B:172:GLU:O	1:B:176:LYS:HG3	2.15	0.46
1:B:77:ARG:O	1:B:81:LEU:HG	2.15	0.46
1:B:25:GLU:O	1:B:26:GLY:O	2.33	0.46
2:C:302:LYS:HD3	2:C:302:LYS:HA	1.70	0.46
1:B:40:LEU:O	4:B:710:NDP:H2N	2.15	0.46
1:B:169:VAL:HG23	4:B:710:NDP:O1A	2.15	0.46
2:C:301:GLU:O	2:C:302:LYS:HD3	2.15	0.46
1:B:143:ILE:HG22	1:B:144:ASN:N	2.31	0.45
2:D:373:LYS:HE2	2:D:375:PHE:CE1	2.52	0.45
2:D:373:LYS:NZ	6:D:1715:HOH:O	2.49	0.45
2:D:302:LYS:O	2:D:303:ASN:C	2.52	0.45
2:D:302:LYS:O	2:D:302:LYS:CG	2.49	0.45
2:C:307:ILE:HG13	6:C:1709:HOH:O	2.15	0.45
2:C:332:ILE:CD1	2:C:514:LEU:HB3	2.46	0.45
1:A:214:TYR:O	1:A:220:THR:HA	2.17	0.45
1:B:73:LEU:O	1:B:76:LYS:HB3	2.16	0.45

Continued on next page...

Continued from previous page...

Atom-1	Atom-2	Interatomic distance (Å)	Clash overlap (Å)
2:C:485:MET:SD	2:C:489:PRO:HD3	2.57	0.45
1:B:208:ILE:HD13	1:B:227:LYS:HB2	1.99	0.45
2:C:336:MET:HE1	2:C:560:LEU:HB2	1.97	0.45
1:A:171:GLN:O	1:A:175:GLU:HG3	2.17	0.44
1:B:172:GLU:HA	1:B:175:GLU:HG2	1.99	0.44
2:C:305:ASN:C	2:C:307:ILE:HD12	2.38	0.44
1:A:8:VAL:HA	1:A:76:LYS:HD3	1.99	0.44
1:B:12:TYR:HE1	1:B:180:LYS:HD2	1.83	0.44
2:D:285:GLU:H	2:D:285:GLU:HG2	1.57	0.44
1:A:3:GLU:OE1	1:A:8:VAL:HG22	2.17	0.44
2:D:416:ARG:O	2:D:417:LYS:HB2	2.18	0.44
1:A:97:LYS:HG2	6:A:1683:HOH:O	2.16	0.44
1:B:127:LEU:O	4:B:710:NDP:H1B	2.18	0.44
1:A:201:ASN:OD1	1:A:203:ASN:HB2	2.18	0.44
2:D:283:ASP:HB2	2:D:286:GLU:HG3	1.98	0.44
1:A:59:CYS:O	1:A:63:THR:HG23	2.18	0.43
1:B:172:GLU:HB2	1:B:176:LYS:HE2	1.99	0.43
1:A:172:GLU:OE2	4:A:610:NDP:N7A	2.51	0.43
1:B:143:ILE:CG2	1:B:144:ASN:N	2.82	0.43
1:A:50:CYS:HA	6:A:1334:HOH:O	2.18	0.43
1:A:2:MET:HG2	1:A:3:GLU:N	2.32	0.43
2:C:301:GLU:O	2:C:302:LYS:CD	2.66	0.43
2:C:315:TYR:HB2	2:C:564:LEU:O	2.18	0.43
1:A:69:LYS:NZ	2:D:285:GLU:HA	2.34	0.43
1:A:24:ASN:C	1:A:26:GLY:H	2.22	0.43
1:B:134:GLU:H	1:B:134:GLU:CD	2.22	0.43
1:A:96:LYS:HB3	1:A:97:LYS:H	1.58	0.42
1:B:119:LEU:HB3	1:B:122:ARG:CZ	2.49	0.42
1:B:182:ILE:HB	1:B:226:TYR:HB2	2.01	0.42
1:B:91:ASP:C	1:B:93:PRO:HD3	2.40	0.42
1:B:133:LYS:HG2	1:B:142:ILE:HB	2.01	0.42
1:B:143:ILE:HG23	1:B:148:ASP:HB2	2.01	0.42
2:C:499:PHE:CE1	2:D:340:ASN:HB3	2.54	0.42
1:A:106:ARG:HE	4:A:610:NDP:P2B	2.42	0.42
1:A:83:LYS:O	1:A:84:GLU:HB3	2.20	0.42
1:A:100:ASN:OD1	1:A:159:TYR:HB3	2.19	0.42
2:D:285:GLU:C	2:D:287:GLU:N	2.72	0.42
1:B:141:TYR:OH	1:B:156:LEU:HD21	2.19	0.42
1:A:159:TYR:CD2	1:A:160:LYS:HG3	2.54	0.42
2:C:491:HIS:CE1	5:C:611:UMP:O4	2.73	0.42
1:B:221:LEU:N	1:B:221:LEU:HD23	2.35	0.42

Continued on next page...

Continued from previous page...

Atom-1	Atom-2	Interatomic distance (Å)	Clash overlap (Å)
2:C:421:ARG:CD	2:C:425:ASP:HB3	2.50	0.42
2:C:470:ARG:HD3	6:D:1385:HOH:O	2.20	0.42
2:C:582:ASN:HB2	2:C:585:ASP:OD2	2.19	0.42
2:D:329:LEU:HD22	2:D:564:LEU:HD12	2.01	0.42
1:A:24:ASN:ND2	1:A:24:ASN:O	2.52	0.41
2:D:353:LYS:HG3	2:D:356:TYR:OH	2.20	0.41
1:A:144:ASN:C	1:A:144:ASN:HD22	2.23	0.41
1:B:14:ILE:HG23	1:B:14:ILE:O	2.20	0.41
2:C:373:LYS:HE2	2:C:375:PHE:CE2	2.56	0.41
2:D:308:HIS:HA	2:D:309:PRO:HD3	1.90	0.41
2:D:516:LEU:HD12	2:D:556:HIS:CE1	2.55	0.41
1:A:172:GLU:O	1:A:176:LYS:HG3	2.20	0.41
1:B:138:GLU:H	1:B:138:GLU:CD	2.22	0.41
1:A:65:VAL:HG11	1:A:98:LEU:HB3	2.02	0.41
1:B:210:VAL:HG12	1:B:224:ILE:HG22	2.02	0.41
2:C:351:LEU:HD23	2:C:351:LEU:HA	1.93	0.41
2:C:305:ASN:ND2	2:C:305:ASN:H	2.18	0.41
1:B:33:ASN:OD1	1:B:35:TYR:HB3	2.21	0.41
2:C:457:LYS:HB2	2:C:457:LYS:HE2	1.88	0.41
1:A:109:TRP:CZ2	1:A:117:LYS:HD2	2.56	0.40
1:A:169:VAL:O	1:A:173:PHE:HD1	2.04	0.40
2:D:336:MET:CE	2:D:560:LEU:HB2	2.51	0.40
1:B:18:CYS:HA	1:B:187:ILE:HB	2.03	0.40
1:B:35:TYR:CZ	1:B:38:ARG:HD3	2.57	0.40
2:D:584:GLU:HG2	6:D:1466:HOH:O	2.21	0.40
2:D:607:ALA:O	2:D:608:ALA:HB2	2.21	0.40
1:B:92:MET:SD	1:B:95:SER:HA	2.62	0.40
2:D:577:ASN:HA	2:D:578:PRO:HD3	1.85	0.40
1:A:26:GLY:C	1:A:28:LYS:N	2.74	0.40

There are no symmetry-related clashes.

5.3 Torsion angles [i](#)

5.3.1 Protein backbone [i](#)

In the following table, the Percentiles column shows the percent Ramachandran outliers of the chain as a percentile score with respect to all X-ray entries followed by that with respect to entries of similar resolution.

The Analysed column shows the number of residues for which the backbone conformation was analysed, and the total number of residues.

Mol	Chain	Analysed	Favoured	Allowed	Outliers	Percentiles	
1	A	219/280 (78%)	208 (95%)	9 (4%)	2 (1%)	17	17
1	B	222/280 (79%)	206 (93%)	14 (6%)	2 (1%)	17	17
2	C	325/328 (99%)	307 (94%)	17 (5%)	1 (0%)	41	47
2	D	326/328 (99%)	304 (93%)	20 (6%)	2 (1%)	25	26
All	All	1092/1216 (90%)	1025 (94%)	60 (6%)	7 (1%)	25	26

All (7) Ramachandran outliers are listed below:

Mol	Chain	Res	Type
1	B	26	GLY
1	A	231	ASN
1	B	5	VAL
2	D	304	LYS
1	A	49	LYS
2	C	430	TYR
2	D	605	ASP

5.3.2 Protein sidechains [i](#)

In the following table, the Percentiles column shows the percent sidechain outliers of the chain as a percentile score with respect to all X-ray entries followed by that with respect to entries of similar resolution.

The Analysed column shows the number of residues for which the sidechain conformation was analysed, and the total number of residues.

Mol	Chain	Analysed	Rotameric	Outliers	Percentiles	
1	A	212/268 (79%)	204 (96%)	8 (4%)	33	41
1	B	215/268 (80%)	205 (95%)	10 (5%)	26	33
2	C	301/302 (100%)	292 (97%)	9 (3%)	41	50
2	D	302/302 (100%)	297 (98%)	5 (2%)	60	72
All	All	1030/1140 (90%)	998 (97%)	32 (3%)	40	49

All (32) residues with a non-rotameric sidechain are listed below:

Mol	Chain	Res	Type
1	A	2	MET
1	A	7	ASP
1	A	24	ASN
1	A	50	CYS

Continued on next page...

Continued from previous page...

Mol	Chain	Res	Type
1	A	52	SER
1	A	84	GLU
1	A	124	ASN
1	A	144	ASN
1	B	27	LYS
1	B	45	VAL
1	B	49	LYS
1	B	79	LYS
1	B	96	LYS
1	B	107	THR
1	B	135	ASP
1	B	137	ASP
1	B	196	PHE
1	B	215	THR
2	C	283	ASP
2	C	298	GLU
2	C	303	ASN
2	C	309	PRO
2	C	379	ILE
2	C	440	GLU
2	C	512	CYS
2	C	604	MET
2	C	606	MET
2	D	302	LYS
2	D	304	LYS
2	D	305	ASN
2	D	601	LYS
2	D	606	MET

Sometimes sidechains can be flipped to improve hydrogen bonding and reduce clashes. All (11) such sidechains are listed below:

Mol	Chain	Res	Type
1	A	24	ASN
1	A	144	ASN
1	B	29	ASN
1	B	121	ASN
2	C	303	ASN
2	C	316	ASN
2	C	342	GLN
2	C	394	ASN
2	C	424	ASN
2	D	394	ASN

Continued on next page...

Continued from previous page...

Mol	Chain	Res	Type
2	D	424	ASN

5.3.3 RNA [i](#)

There are no RNA molecules in this entry.

5.4 Non-standard residues in protein, DNA, RNA chains [i](#)

There are no non-standard protein/DNA/RNA residues in this entry.

5.5 Carbohydrates [i](#)

There are no monosaccharides in this entry.

5.6 Ligand geometry [i](#)

6 ligands are modelled in this entry.

In the following table, the Counts columns list the number of bonds (or angles) for which Mogul statistics could be retrieved, the number of bonds (or angles) that are observed in the model and the number of bonds (or angles) that are defined in the Chemical Component Dictionary. The Link column lists molecule types, if any, to which the group is linked. The Z score for a bond length (or angle) is the number of standard deviations the observed value is removed from the expected value. A bond length (or angle) with $|Z| > 2$ is considered an outlier worth inspection. RMSZ is the root-mean-square of all Z scores of the bond lengths (or angles).

Mol	Type	Chain	Res	Link	Bond lengths			Bond angles		
					Counts	RMSZ	# Z > 2	Counts	RMSZ	# Z > 2
5	UMP	D	711	-	21,21,21	2.13	10 (47%)	30,31,31	2.15	11 (36%)
4	NDP	A	610	-	47,52,52	2.89	23 (48%)	61,80,80	2.42	24 (39%)
4	NDP	B	710	-	47,52,52	2.84	21 (44%)	61,80,80	2.11	22 (36%)
5	UMP	C	611	-	21,21,21	2.01	7 (33%)	30,31,31	2.00	10 (33%)
3	WRA	B	709	-	22,25,25	3.06	13 (59%)	27,36,36	1.41	4 (14%)
3	WRA	A	609	-	22,25,25	3.00	13 (59%)	27,36,36	1.36	4 (14%)

In the following table, the Chirals column lists the number of chiral outliers, the number of chiral centers analysed, the number of these observed in the model and the number defined in the Chemical Component Dictionary. Similar counts are reported in the Torsion and Rings columns. '2' means no outliers of that kind were identified.

Mol	Type	Chain	Res	Link	Chirals	Torsions	Rings
5	UMP	D	711	-	-	0/10/22/22	0/2/2/2
4	NDP	A	610	-	-	6/30/77/77	0/5/5/5
4	NDP	B	710	-	-	9/30/77/77	0/5/5/5
5	UMP	C	611	-	-	1/10/22/22	0/2/2/2
3	WRA	B	709	-	-	2/8/27/27	0/2/2/2
3	WRA	A	609	-	-	2/8/27/27	0/2/2/2

All (87) bond length outliers are listed below:

Mol	Chain	Res	Type	Atoms	Z	Observed(Å)	Ideal(Å)
4	A	610	NDP	PA-O3	-8.79	1.50	1.59
4	B	710	NDP	O4B-C1B	-8.24	1.30	1.40
4	A	610	NDP	O4B-C1B	7.98	1.51	1.40
4	B	710	NDP	PN-O3	-7.17	1.51	1.59
3	A	609	WRA	O7-N6	6.51	1.48	1.40
4	B	710	NDP	C5D-C4D	5.71	1.68	1.51
4	A	610	NDP	P2B-O2B	-5.43	1.50	1.59
3	B	709	WRA	C17-C12	5.32	1.47	1.38
4	A	610	NDP	C4A-N3A	5.31	1.42	1.35
4	B	710	NDP	C2N-C3N	4.94	1.48	1.35
3	B	709	WRA	C17-C16	4.91	1.46	1.38
3	A	609	WRA	C17-C16	4.90	1.46	1.38
3	B	709	WRA	C14-C15	4.89	1.46	1.38
3	B	709	WRA	O7-N6	4.79	1.46	1.40
4	B	710	NDP	C4A-N3A	4.75	1.42	1.35
3	B	709	WRA	C14-C13	4.59	1.46	1.38
4	A	610	NDP	O4B-C4B	4.54	1.55	1.45
5	D	711	UMP	C2-N1	4.51	1.45	1.38
4	A	610	NDP	P2B-O2X	-4.47	1.38	1.54
3	A	609	WRA	C17-C12	4.40	1.46	1.38
5	C	611	UMP	C2-N1	4.35	1.45	1.38
3	A	609	WRA	C14-C15	4.26	1.45	1.38
4	A	610	NDP	O4D-C1D	4.19	1.51	1.42
3	B	709	WRA	C16-C15	4.17	1.48	1.39
4	A	610	NDP	C2N-C3N	4.13	1.46	1.35
5	C	611	UMP	O4'-C1'	4.08	1.51	1.42
4	B	710	NDP	C2D-C3D	-4.08	1.42	1.53
3	B	709	WRA	C12-C13	4.06	1.46	1.39
4	B	710	NDP	C6N-N1N	4.02	1.47	1.37
5	D	711	UMP	O4'-C1'	4.02	1.51	1.42
3	A	609	WRA	C12-C13	4.01	1.46	1.39
3	A	609	WRA	C16-C15	3.96	1.48	1.39

Continued on next page...

Continued from previous page...

Mol	Chain	Res	Type	Atoms	Z	Observed(Å)	Ideal(Å)
4	B	710	NDP	P2B-O2X	-3.92	1.40	1.54
3	A	609	WRA	O11-C12	3.75	1.44	1.37
4	B	710	NDP	C2A-N1A	3.69	1.40	1.33
4	A	610	NDP	C2D-C3D	-3.68	1.43	1.53
4	A	610	NDP	C2A-N1A	3.57	1.40	1.33
4	B	710	NDP	O4D-C1D	3.55	1.50	1.42
3	A	609	WRA	O7-C8	3.52	1.51	1.45
4	A	610	NDP	C6N-C5N	3.20	1.42	1.33
3	A	609	WRA	C14-C13	3.20	1.43	1.38
4	B	710	NDP	C4N-C5N	-3.17	1.40	1.49
4	B	710	NDP	PN-O5D	3.17	1.71	1.59
4	A	610	NDP	C5D-C4D	3.12	1.60	1.51
3	B	709	WRA	O7-C8	2.98	1.50	1.45
4	B	710	NDP	PN-O2N	-2.98	1.41	1.55
4	A	610	NDP	C6N-N1N	2.94	1.44	1.37
4	B	710	NDP	C6N-C5N	2.85	1.41	1.33
5	D	711	UMP	P-OP3	-2.80	1.44	1.54
5	D	711	UMP	P-OP2	-2.76	1.44	1.54
4	B	710	NDP	O3D-C3D	2.68	1.49	1.43
4	B	710	NDP	O3B-C3B	2.68	1.49	1.43
4	B	710	NDP	C2A-N3A	2.67	1.36	1.32
5	C	611	UMP	P-O5'	-2.66	1.51	1.60
5	D	711	UMP	P-O5'	-2.55	1.52	1.60
3	B	709	WRA	C15-CL2	2.52	1.79	1.73
4	A	610	NDP	O3D-C3D	2.51	1.49	1.43
3	B	709	WRA	C16-CL3	2.50	1.79	1.73
4	A	610	NDP	C4N-C3N	-2.47	1.45	1.50
4	B	710	NDP	C4N-C3N	-2.47	1.45	1.50
5	C	611	UMP	P-OP3	-2.47	1.45	1.54
4	A	610	NDP	C4N-C5N	-2.42	1.42	1.49
3	B	709	WRA	O11-C12	2.41	1.42	1.37
3	A	609	WRA	C9-C10	2.40	1.61	1.51
5	D	711	UMP	P-OP1	-2.39	1.43	1.50
5	D	711	UMP	C2-N3	2.35	1.42	1.38
5	C	611	UMP	P-OP2	-2.34	1.46	1.54
5	C	611	UMP	C6-C5	2.34	1.40	1.35
5	D	711	UMP	C4-N3	2.33	1.42	1.38
4	B	710	NDP	PA-O3	-2.33	1.57	1.59
5	D	711	UMP	O3'-C3'	2.31	1.48	1.43
4	B	710	NDP	C3B-C4B	2.26	1.58	1.53
4	A	610	NDP	C1B-N9A	2.20	1.55	1.49
4	A	610	NDP	C8A-N7A	-2.20	1.30	1.34

Continued on next page...

Continued from previous page...

Mol	Chain	Res	Type	Atoms	Z	Observed(Å)	Ideal(Å)
5	D	711	UMP	C6-C5	2.18	1.40	1.35
3	B	709	WRA	C5-N4	2.14	1.37	1.33
3	A	609	WRA	C5-N4	2.14	1.37	1.33
4	A	610	NDP	O4D-C4D	-2.14	1.40	1.45
3	B	709	WRA	C9-C10	2.12	1.59	1.51
4	A	610	NDP	C5A-N7A	-2.12	1.32	1.39
5	C	611	UMP	C5-C4	2.09	1.48	1.43
4	A	610	NDP	C2A-N3A	2.09	1.35	1.32
4	A	610	NDP	C3D-C4D	-2.08	1.47	1.53
4	A	610	NDP	PA-O5B	2.07	1.67	1.59
3	A	609	WRA	C16-CL3	2.05	1.78	1.73
4	B	710	NDP	PA-O2A	-2.05	1.45	1.55
3	A	609	WRA	C9-C8	2.03	1.59	1.51

All (75) bond angle outliers are listed below:

Mol	Chain	Res	Type	Atoms	Z	Observed(°)	Ideal(°)
4	A	610	NDP	O4B-C1B-N9A	7.80	119.09	108.75
4	A	610	NDP	C4B-O4B-C1B	-6.72	103.77	109.92
4	A	610	NDP	C1D-N1N-C2N	-5.40	112.25	121.14
4	B	710	NDP	O4B-C4B-C5B	-5.03	93.23	109.33
5	D	711	UMP	C1'-N1-C6	-4.86	111.96	121.53
5	C	611	UMP	C1'-N1-C6	-4.70	112.28	121.53
3	B	709	WRA	NH2-C5-N6	4.64	121.27	117.46
4	B	710	NDP	C1D-N1N-C2N	-4.32	114.03	121.14
5	D	711	UMP	O4'-C1'-N1	4.26	115.42	107.86
3	A	609	WRA	NH2-C5-N6	4.09	120.82	117.46
4	A	610	NDP	O4B-C4B-C5B	-4.00	96.52	109.33
4	B	710	NDP	C3N-C2N-N1N	-3.95	117.41	123.20
4	B	710	NDP	O2X-P2B-O1X	3.91	126.08	110.83
4	A	610	NDP	O2X-P2B-O1X	3.87	125.91	110.83
4	B	710	NDP	O4B-C1B-C2B	3.83	113.14	106.61
5	D	711	UMP	C1'-N1-C2	3.83	125.14	117.66
5	C	611	UMP	O4'-C1'-N1	3.79	114.60	107.86
4	B	710	NDP	O3X-P2B-O1X	-3.77	96.14	110.83
5	D	711	UMP	O4'-C1'-C2'	-3.70	99.34	106.25
4	A	610	NDP	P2B-O2B-C2B	3.69	133.29	123.43
4	A	610	NDP	C2D-C3D-C4D	3.59	109.54	102.61
5	C	611	UMP	C1'-N1-C2	3.52	124.54	117.66
3	A	609	WRA	N4-C3-N2	-3.49	120.72	126.48
5	D	711	UMP	C2'-C1'-N1	3.45	122.44	113.81
4	A	610	NDP	C3N-C2N-N1N	-3.42	118.19	123.20

Continued on next page...

Continued from previous page...

Mol	Chain	Res	Type	Atoms	Z	Observed(°)	Ideal(°)
4	B	710	NDP	O2X-P2B-O2B	3.40	119.10	105.85
4	A	610	NDP	O5B-C5B-C4B	-3.38	97.49	108.99
4	A	610	NDP	O3D-C3D-C4D	-3.30	101.61	111.08
4	A	610	NDP	C6N-N1N-C2N	3.28	122.83	119.32
4	B	710	NDP	O5B-PA-O1A	-3.18	96.34	108.94
4	B	710	NDP	C5B-C4B-C3B	3.18	126.65	115.21
4	B	710	NDP	C4B-O4B-C1B	-3.15	107.04	109.92
5	D	711	UMP	O2-C2-N1	3.12	126.86	122.80
5	C	611	UMP	O2-C2-N1	3.09	126.82	122.80
3	B	709	WRA	N4-C3-N2	-3.07	121.42	126.48
5	C	611	UMP	C4'-O4'-C1'	3.05	116.76	109.51
4	B	710	NDP	C2D-C3D-C4D	3.05	108.50	102.61
4	B	710	NDP	O7N-C7N-N7N	-3.00	116.16	122.89
5	D	711	UMP	C4'-O4'-C1'	2.97	116.57	109.51
4	B	710	NDP	O2B-C2B-C3B	2.95	122.27	111.68
4	A	610	NDP	O2X-P2B-O2B	2.94	117.30	105.85
5	C	611	UMP	O4'-C1'-C2'	-2.94	100.76	106.25
5	C	611	UMP	C2'-C1'-N1	2.92	121.12	113.81
4	A	610	NDP	O3X-P2B-O2X	-2.91	96.91	107.80
4	A	610	NDP	O5D-C5D-C4D	-2.86	99.25	108.99
4	B	710	NDP	O3D-C3D-C4D	-2.79	103.05	111.08
4	B	710	NDP	O3B-C3B-C4B	2.72	118.89	111.08
5	D	711	UMP	O4'-C4'-C3'	-2.69	99.51	105.65
4	B	710	NDP	O3X-P2B-O2X	-2.69	97.73	107.80
4	A	610	NDP	O2N-PN-O3	-2.67	100.05	107.27
4	A	610	NDP	O7N-C7N-N7N	-2.66	116.93	122.89
4	A	610	NDP	C5B-C4B-C3B	2.66	124.77	115.21
5	C	611	UMP	O4'-C4'-C3'	-2.57	99.78	105.65
4	B	710	NDP	C2D-C1D-N1N	-2.56	107.02	113.31
4	B	710	NDP	N3A-C2A-N1A	-2.49	125.29	128.67
4	A	610	NDP	O3X-P2B-O1X	-2.49	101.15	110.83
4	A	610	NDP	O2B-C2B-C3B	2.48	120.58	111.68
5	D	711	UMP	O4-C4-N3	2.45	122.83	119.27
4	B	710	NDP	C2B-C3B-C4B	-2.36	96.92	101.99
4	A	610	NDP	O2A-PA-O1A	2.34	123.33	112.44
4	A	610	NDP	N3A-C2A-N1A	-2.30	125.55	128.67
4	B	710	NDP	C6N-N1N-C2N	2.26	121.74	119.32
5	C	611	UMP	C2'-C3'-C4'	2.26	107.38	102.80
5	D	711	UMP	O4-C4-C5	-2.17	121.42	125.16
3	B	709	WRA	NH1-C3-N4	2.15	119.99	116.57
4	B	710	NDP	O4D-C1D-N1N	2.11	112.11	108.08
4	A	610	NDP	O3B-C3B-C4B	-2.10	105.05	111.08

Continued on next page...

Continued from previous page...

Mol	Chain	Res	Type	Atoms	Z	Observed(°)	Ideal(°)
5	C	611	UMP	O5'-P-OP1	2.10	112.11	106.44
4	B	710	NDP	O3X-P2B-O2B	-2.10	97.68	105.85
3	A	609	WRA	NH1-C3-N4	2.09	119.90	116.57
3	B	709	WRA	N6-C5-N4	-2.09	120.18	121.53
4	A	610	NDP	O2N-PN-O1N	2.05	122.00	112.44
5	D	711	UMP	O5'-P-OP1	2.03	111.93	106.44
4	A	610	NDP	O3X-P2B-O2B	-2.01	98.00	105.85
3	A	609	WRA	N6-C5-N4	-2.00	120.24	121.53

There are no chirality outliers.

All (20) torsion outliers are listed below:

Mol	Chain	Res	Type	Atoms
3	A	609	WRA	C1-N6-O7-C8
3	A	609	WRA	C5-N6-O7-C8
3	B	709	WRA	C1-N6-O7-C8
3	B	709	WRA	C5-N6-O7-C8
4	A	610	NDP	PA-O3-PN-O5D
4	A	610	NDP	C5D-O5D-PN-O1N
4	B	710	NDP	PA-O3-PN-O5D
4	B	710	NDP	C5D-O5D-PN-O1N
4	B	710	NDP	O4B-C4B-C5B-O5B
4	B	710	NDP	C3B-C4B-C5B-O5B
4	B	710	NDP	C2B-O2B-P2B-O3X
5	C	611	UMP	C3'-C4'-C5'-O5'
4	A	610	NDP	C2B-O2B-P2B-O2X
4	A	610	NDP	O4D-C1D-N1N-C2N
4	B	710	NDP	O4D-C1D-N1N-C2N
4	A	610	NDP	C2N-C3N-C7N-N7N
4	B	710	NDP	C2N-C3N-C7N-N7N
4	B	710	NDP	C2D-C1D-N1N-C2N
4	A	610	NDP	C2D-C1D-N1N-C2N
4	B	710	NDP	C2D-C1D-N1N-C6N

There are no ring outliers.

5 monomers are involved in 12 short contacts:

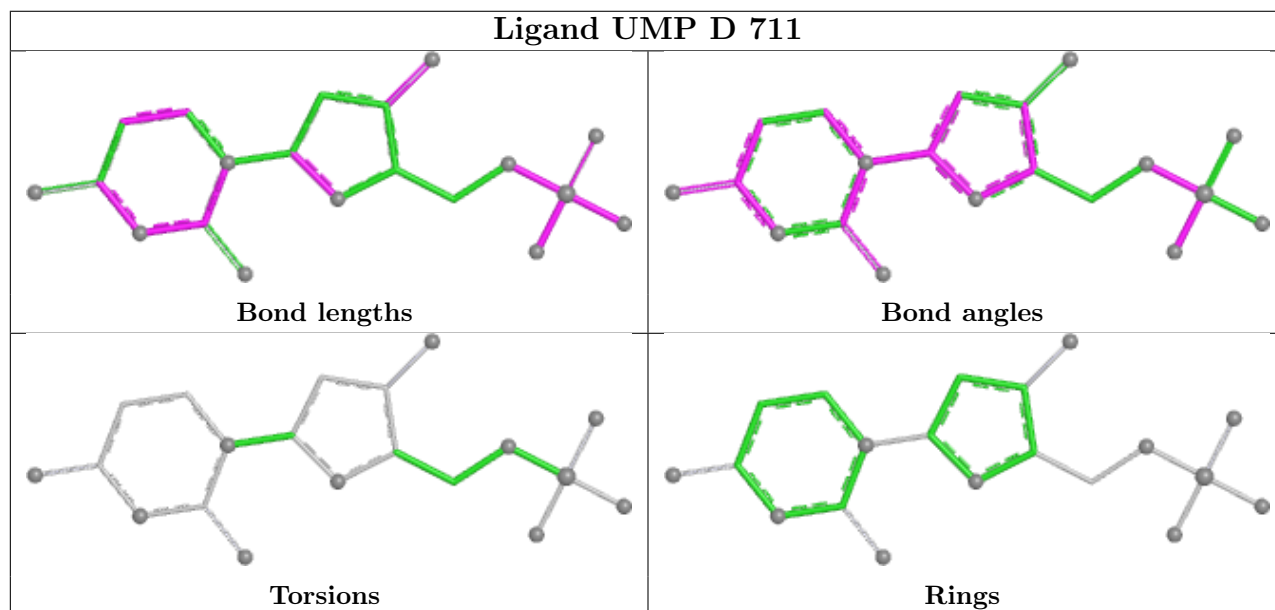
Mol	Chain	Res	Type	Clashes	Symm-Clashes
4	A	610	NDP	4	0
4	B	710	NDP	5	0
5	C	611	UMP	1	0

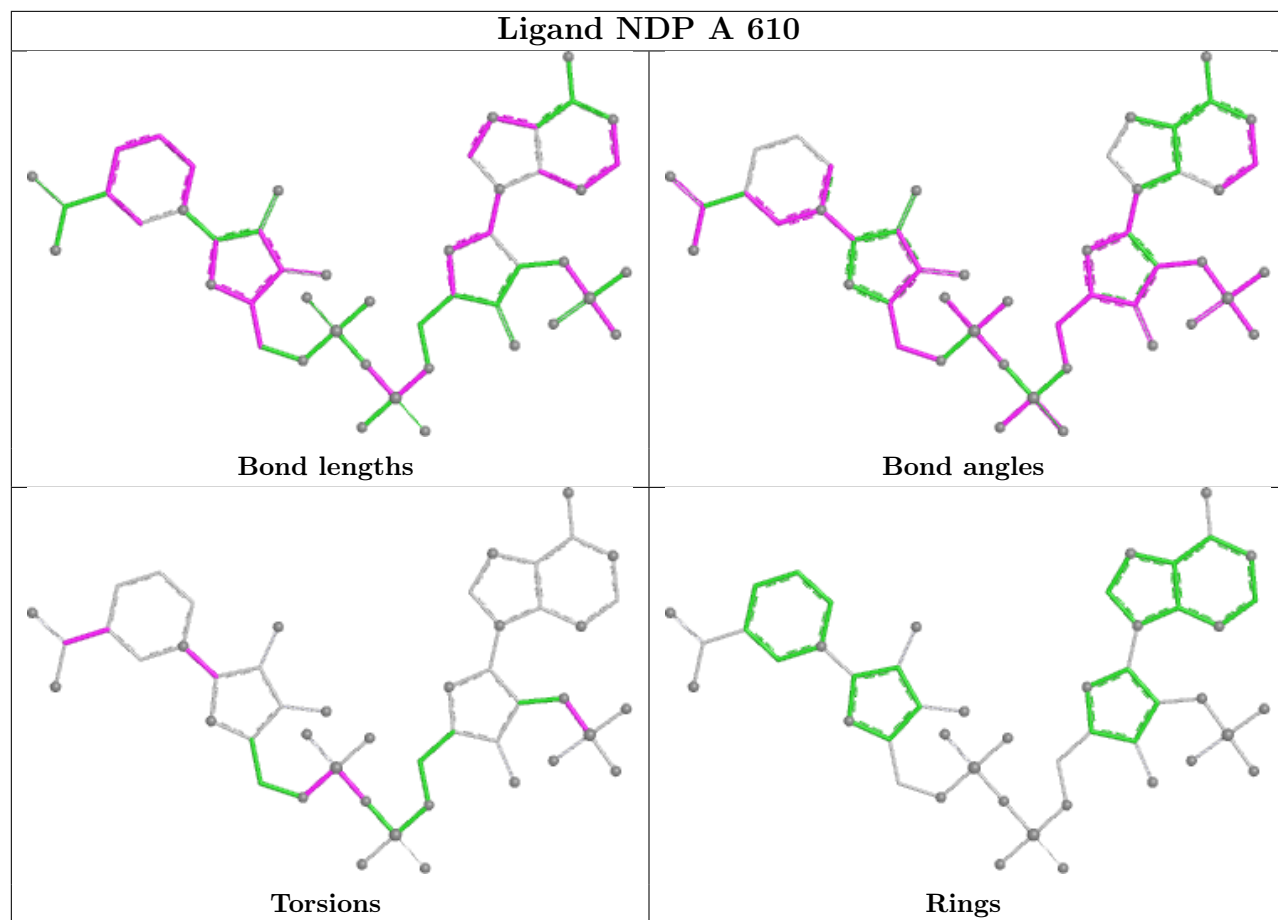
Continued on next page...

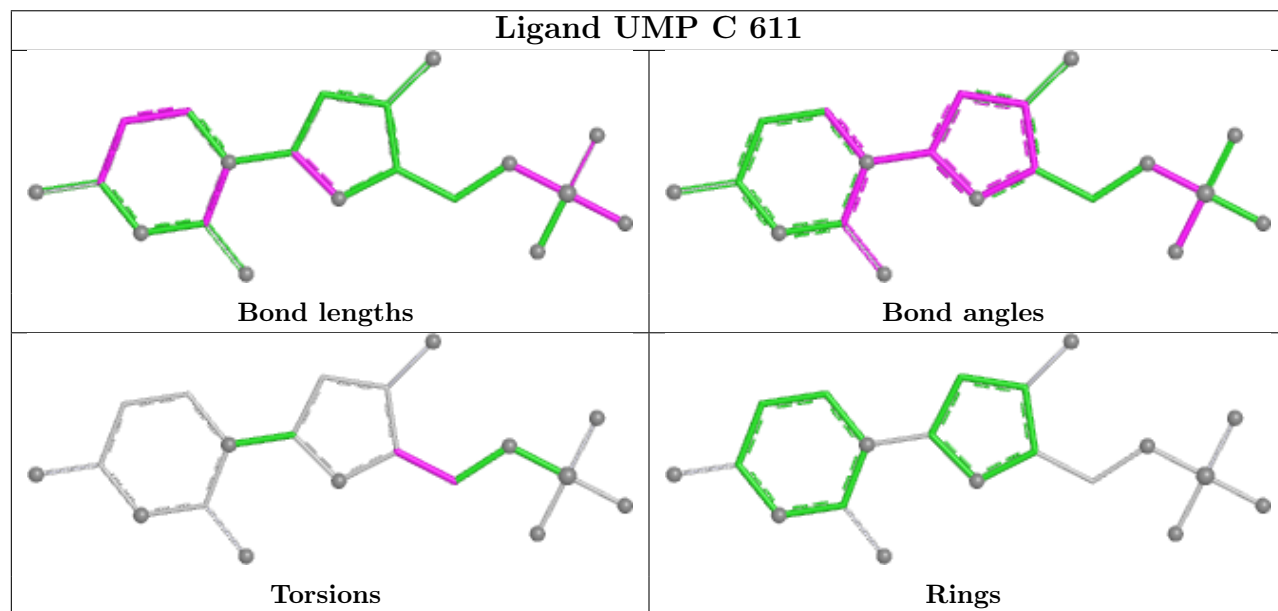
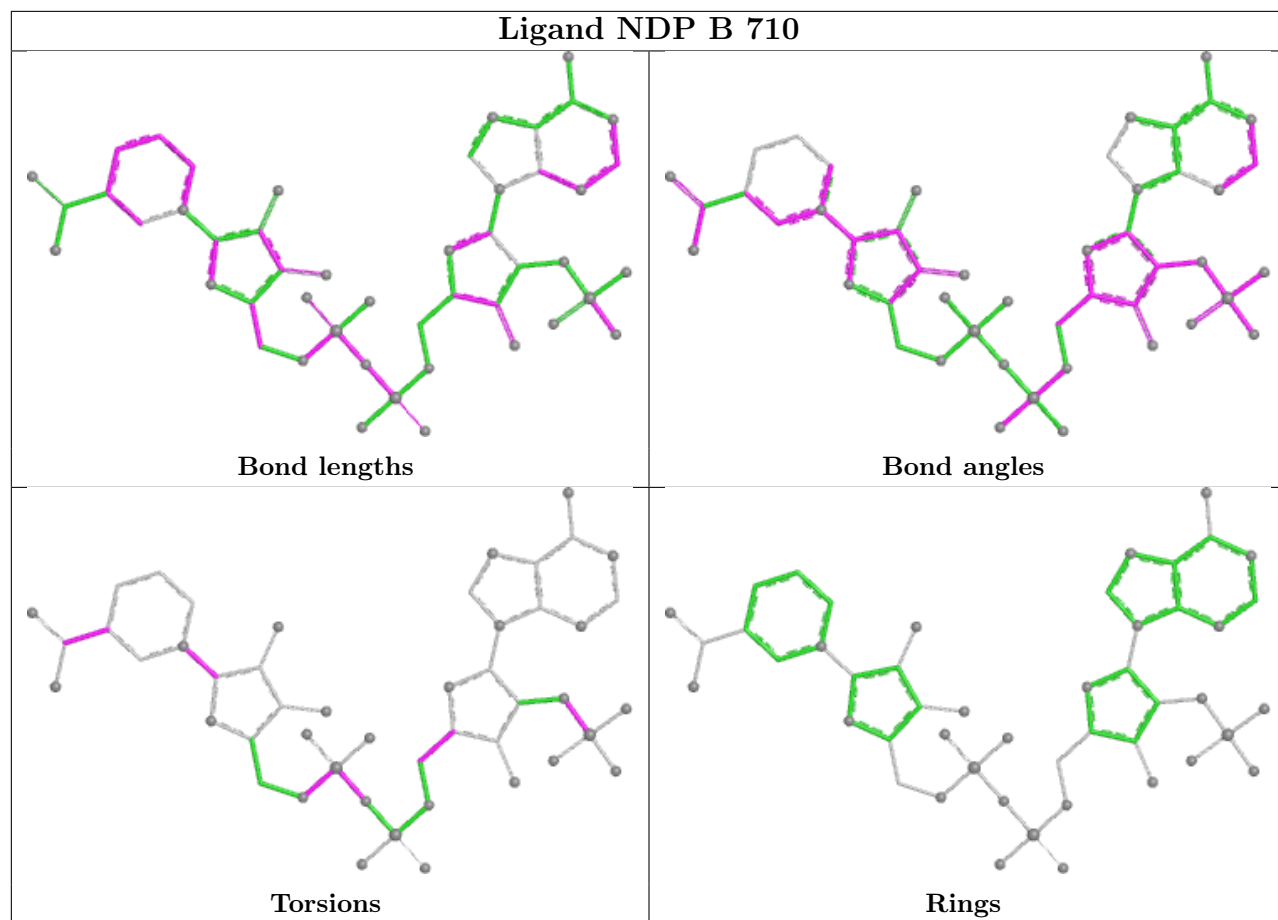
Continued from previous page...

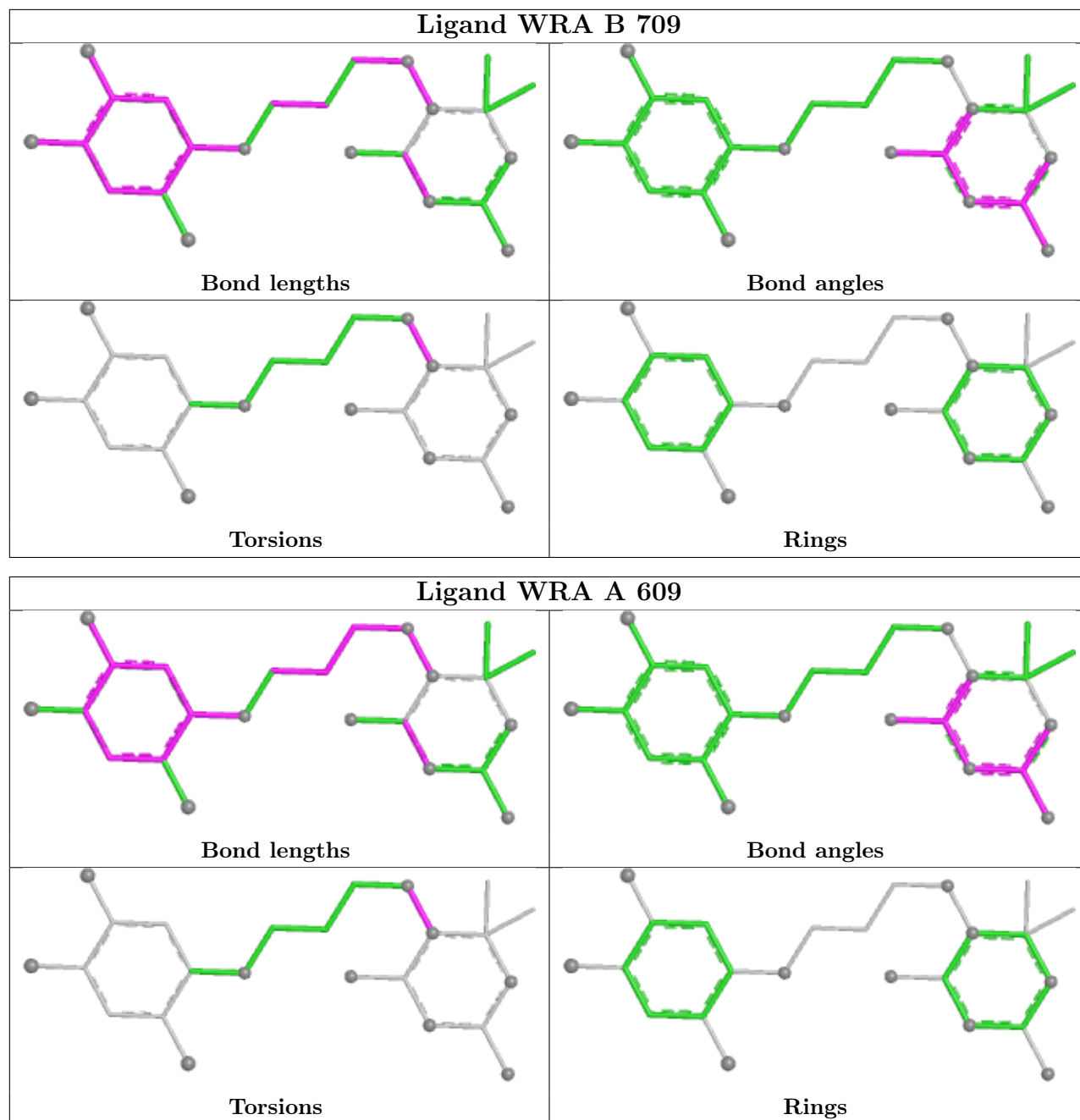
Mol	Chain	Res	Type	Clashes	Symm-Clashes
3	B	709	WRA	1	0
3	A	609	WRA	1	0

The following is a two-dimensional graphical depiction of Mogul quality analysis of bond lengths, bond angles, torsion angles, and ring geometry for all instances of the Ligand of Interest. In addition, ligands with molecular weight > 250 and outliers as shown on the validation Tables will also be included. For torsion angles, if less than 5% of the Mogul distribution of torsion angles is within 10 degrees of the torsion angle in question, then that torsion angle is considered an outlier. Any bond that is central to one or more torsion angles identified as an outlier by Mogul will be highlighted in the graph. For rings, the root-mean-square deviation (RMSD) between the ring in question and similar rings identified by Mogul is calculated over all ring torsion angles. If the average RMSD is greater than 60 degrees and the minimal RMSD between the ring in question and any Mogul-identified rings is also greater than 60 degrees, then that ring is considered an outlier. The outliers are highlighted in purple. The color gray indicates Mogul did not find sufficient equivalents in the CSD to analyse the geometry.









5.7 Other polymers [i](#)

There are no such residues in this entry.

5.8 Polymer linkage issues [i](#)

There are no chain breaks in this entry.

6 Fit of model and data [i](#)

6.1 Protein, DNA and RNA chains [i](#)

In the following table, the column labelled ‘#RSRZ > 2’ contains the number (and percentage) of RSRZ outliers, followed by percent RSRZ outliers for the chain as percentile scores relative to all X-ray entries and entries of similar resolution. The OWAB column contains the minimum, median, 95th percentile and maximum values of the occupancy-weighted average B-factor per residue. The column labelled ‘Q < 0.9’ lists the number of (and percentage) of residues with an average occupancy less than 0.9.

Mol	Chain	Analysed	<RSRZ>	#RSRZ>2	OWAB(Å ²)	Q<0.9
1	A	223/280 (79%)	0.74	32 (14%) 2 4	24, 44, 94, 96	0
1	B	226/280 (80%)	1.81	78 (34%) 0 0	31, 79, 96, 96	0
2	C	327/328 (99%)	0.15	19 (5%) 23 32	21, 33, 94, 96	0
2	D	328/328 (100%)	0.12	20 (6%) 21 30	21, 33, 94, 96	0
All	All	1104/1216 (90%)	0.60	149 (13%) 3 5	21, 39, 95, 96	0

All (149) RSRZ outliers are listed below:

Mol	Chain	Res	Type	RSRZ
1	B	85	THR	10.5
2	D	607	ALA	10.3
1	A	233	MET	10.2
1	B	2	MET	9.5
2	D	282	ASP	9.2
1	B	95	SER	9.1
1	B	91	ASP	8.9
2	C	606	MET	8.7
1	B	94	ASN	8.7
1	B	92	MET	8.7
1	A	2	MET	8.6
1	A	1	MET	8.5
2	D	608	ALA	8.1
1	A	85	THR	8.0
2	C	608	ALA	7.8
1	B	231	ASN	7.7
2	C	302	LYS	7.6
1	A	231	ASN	7.3
2	C	303	ASN	7.2
2	C	607	ALA	7.0
2	D	606	MET	6.9

Continued on next page...

Continued from previous page...

Mol	Chain	Res	Type	RSRZ
2	C	301	GLU	6.7
1	A	23	LYS	6.5
1	B	14	ILE	6.4
1	B	75	TYR	6.4
1	B	28	LYS	6.4
2	D	281	ASP	6.2
1	B	26	GLY	6.2
2	D	300	GLU	6.2
1	A	24	ASN	6.0
2	D	284	ASP	5.8
1	B	82	ASN	5.7
1	A	75	TYR	5.7
2	C	300	GLU	5.7
1	B	96	LYS	5.7
1	A	25	GLU	5.6
1	A	26	GLY	5.6
1	B	73	LEU	5.5
1	B	86	VAL	5.5
1	A	22	SER	5.5
2	D	299	LYS	5.5
2	C	283	ASP	5.4
1	B	80	TYR	5.4
1	A	232	LYS	5.3
2	C	282	ASP	5.3
1	B	84	GLU	5.1
2	D	283	ASP	5.1
1	B	162	PHE	5.0
1	B	93	PRO	5.0
2	D	301	GLU	5.0
1	A	230	ASN	4.9
1	B	151	VAL	4.8
2	D	303	ASN	4.7
1	B	130	THR	4.7
1	B	164	ILE	4.6
1	B	163	ILE	4.5
1	B	138	GLU	4.5
1	B	81	LEU	4.4
1	B	3	GLU	4.4
1	A	28	LYS	4.4
2	C	299	LYS	4.4
1	A	27	LYS	4.3
2	D	302	LYS	4.3

Continued on next page...

Continued from previous page...

Mol	Chain	Res	Type	RSRZ
1	A	14	ILE	4.2
2	D	298	GLU	4.2
1	B	24	ASN	4.1
1	B	144	ASN	4.1
1	B	78	CYS	4.0
1	B	134	GLU	4.0
2	D	285	GLU	4.0
1	B	13	ALA	4.0
1	B	182	ILE	3.9
2	C	284	ASP	3.9
1	B	27	LYS	3.9
1	B	116	PHE	3.8
2	D	309	PRO	3.8
1	B	15	CYS	3.7
1	A	163	ILE	3.7
1	B	23	LYS	3.6
2	D	307	ILE	3.5
1	A	96	LYS	3.5
1	B	29	ASN	3.5
2	D	605	ASP	3.5
1	B	12	TYR	3.4
1	B	230	ASN	3.4
1	A	164	ILE	3.3
1	B	145	LYS	3.3
1	B	146	VAL	3.3
1	A	84	GLU	3.3
1	B	25	GLU	3.3
1	A	162	PHE	3.3
1	B	184	PHE	3.3
2	C	298	GLU	3.2
1	B	192	GLU	3.2
1	B	195	VAL	3.2
1	B	76	LYS	3.1
1	A	29	ASN	3.0
1	A	13	ALA	3.0
1	B	68	SER	3.0
2	C	297	LYS	3.0
1	B	71	GLU	3.0
1	B	74	LYS	2.9
1	B	115	LYS	2.9
1	B	8	VAL	2.9
1	B	183	TYR	2.9

Continued on next page...

Continued from previous page...

Mol	Chain	Res	Type	RSRZ
1	A	3	GLU	2.9
1	B	157	ASN	2.9
1	A	182	ILE	2.8
1	B	102	VAL	2.8
1	B	43	LYS	2.8
2	C	304	LYS	2.8
1	B	7	ASP	2.7
1	A	83	LYS	2.7
1	B	137	ASP	2.7
1	B	139	ASP	2.7
1	B	61	VAL	2.7
1	B	155	LYS	2.7
1	A	102	VAL	2.7
1	A	161	CYS	2.6
1	A	12	TYR	2.6
1	B	131	LEU	2.6
1	B	136	PHE	2.5
1	B	185	THR	2.5
2	D	345	ARG	2.5
2	C	605	ASP	2.5
1	B	22	SER	2.4
1	B	9	PHE	2.4
1	B	147	GLU	2.4
1	B	202	GLU	2.4
1	B	83	LYS	2.4
1	B	193	CYS	2.4
1	A	71	GLU	2.3
1	B	66	ASN	2.3
1	B	118	PRO	2.3
1	A	97	LYS	2.3
1	B	20	VAL	2.3
1	B	204	GLU	2.2
2	C	494	CYS	2.2
2	C	310	ASN	2.2
2	D	308	HIS	2.2
2	C	290	PHE	2.1
1	B	114	LYS	2.1
2	D	603	SER	2.1
1	A	103	VAL	2.1
1	B	132	LYS	2.1
1	B	165	GLY	2.1
2	C	493	LEU	2.0

Continued on next page...

Continued from previous page...

Mol	Chain	Res	Type	RSRZ
1	B	67	GLU	2.0
1	B	125	VAL	2.0

6.2 Non-standard residues in protein, DNA, RNA chains [i](#)

There are no non-standard protein/DNA/RNA residues in this entry.

6.3 Carbohydrates [i](#)

There are no monosaccharides in this entry.

6.4 Ligands [i](#)

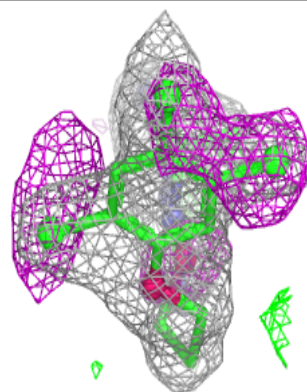
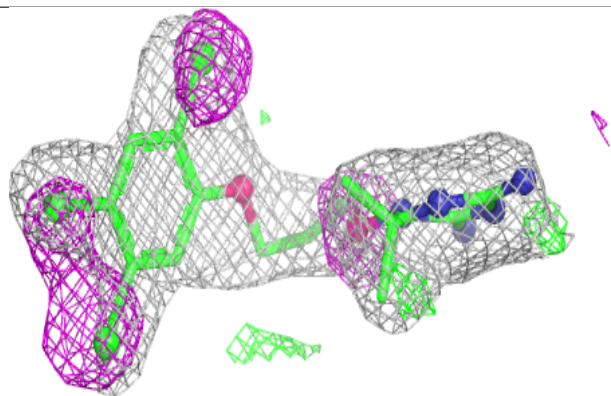
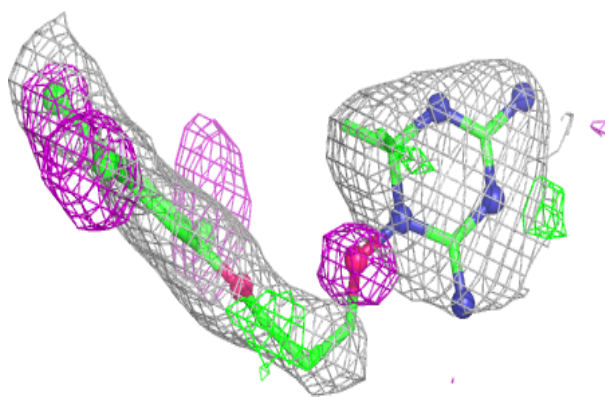
In the following table, the Atoms column lists the number of modelled atoms in the group and the number defined in the chemical component dictionary. The B-factors column lists the minimum, median, 95th percentile and maximum values of B factors of atoms in the group. The column labelled 'Q<0.9' lists the number of atoms with occupancy less than 0.9.

Mol	Type	Chain	Res	Atoms	RSCC	RSR	B-factors(Å ²)	Q<0.9
3	WRA	B	709	24/24	0.61	0.32	56,65,67,68	0
3	WRA	A	609	24/24	0.67	0.28	29,35,44,45	0
4	NDP	B	710	48/48	0.83	0.21	74,90,95,95	0
4	NDP	A	610	48/48	0.96	0.10	35,42,49,52	0
5	UMP	C	611	20/20	0.97	0.15	38,48,55,55	0
5	UMP	D	711	20/20	0.97	0.15	39,54,62,62	0

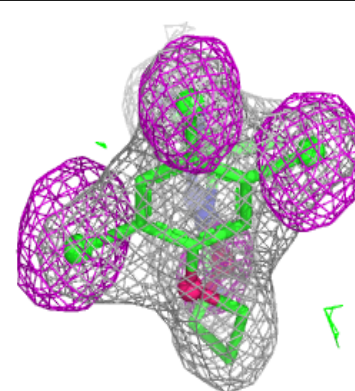
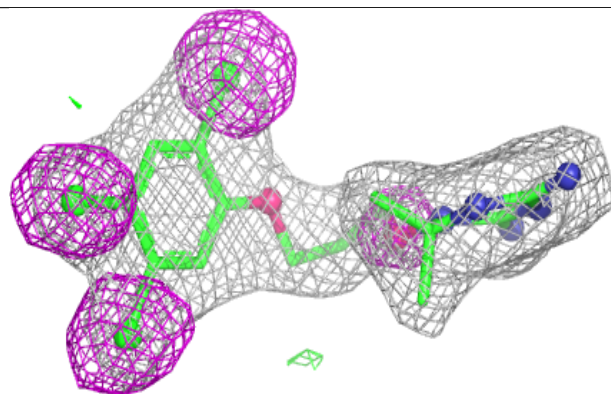
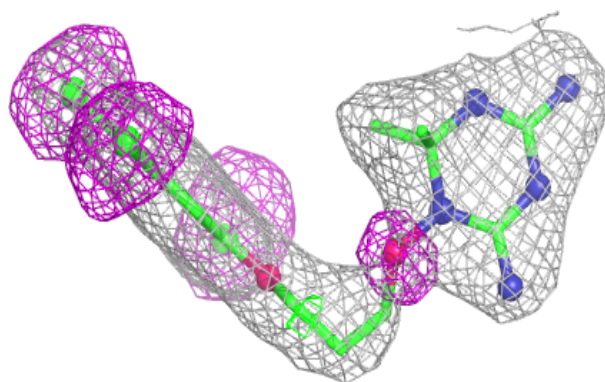
The following is a graphical depiction of the model fit to experimental electron density of all instances of the Ligand of Interest. In addition, ligands with molecular weight > 250 and outliers as shown on the geometry validation Tables will also be included. Each fit is shown from different orientation to approximate a three-dimensional view.

Electron density around WRA B 709:

$2mF_o-DF_c$ (at 0.7 rmsd) in gray
 mF_o-DF_c (at 3 rmsd) in purple (negative)
and green (positive)

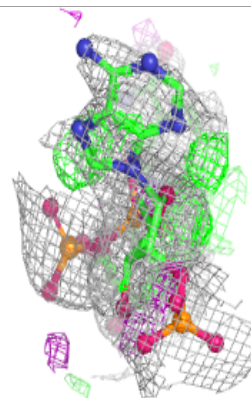
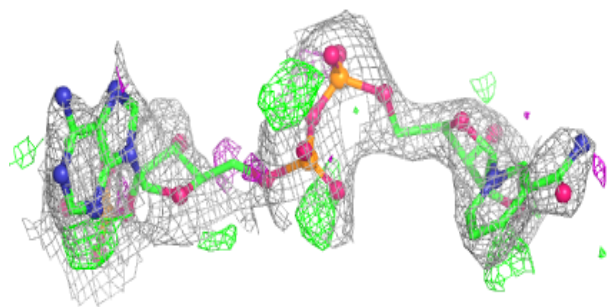
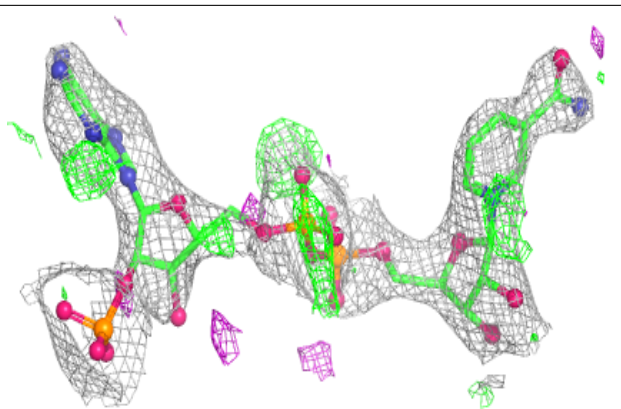
**Electron density around WRA A 609:**

$2mF_o-DF_c$ (at 0.7 rmsd) in gray
 mF_o-DF_c (at 3 rmsd) in purple (negative)
and green (positive)

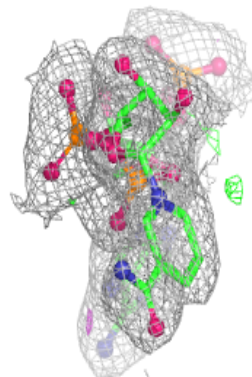
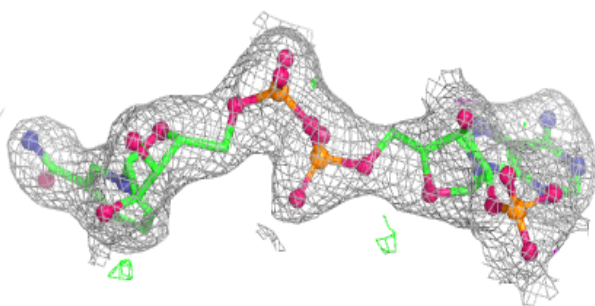
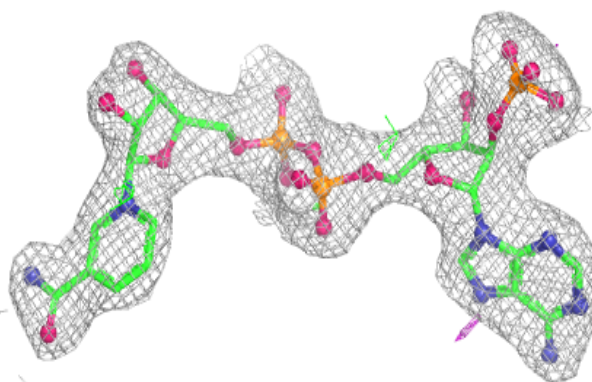


Electron density around NDP B 710:

$2mF_o-DF_c$ (at 0.7 rmsd) in gray
 mF_o-DF_c (at 3 rmsd) in purple (negative)
and green (positive)

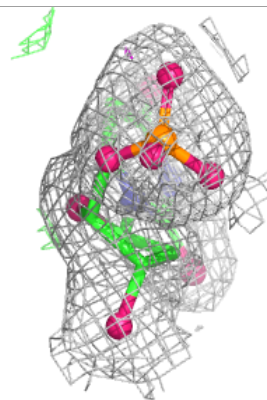
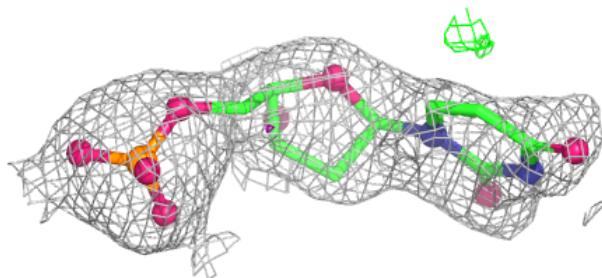
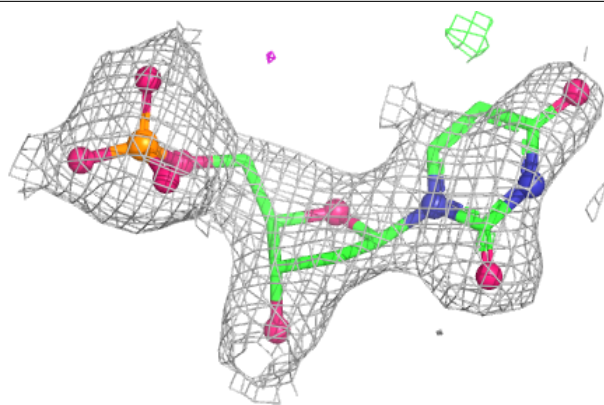
**Electron density around NDP A 610:**

$2mF_o-DF_c$ (at 0.7 rmsd) in gray
 mF_o-DF_c (at 3 rmsd) in purple (negative)
and green (positive)

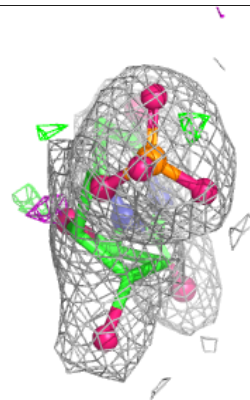
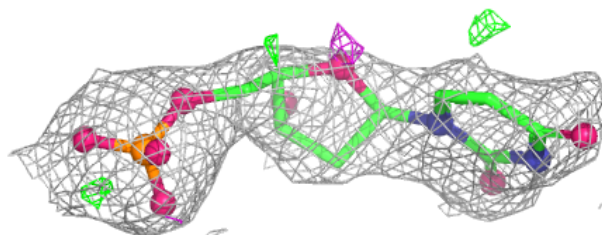
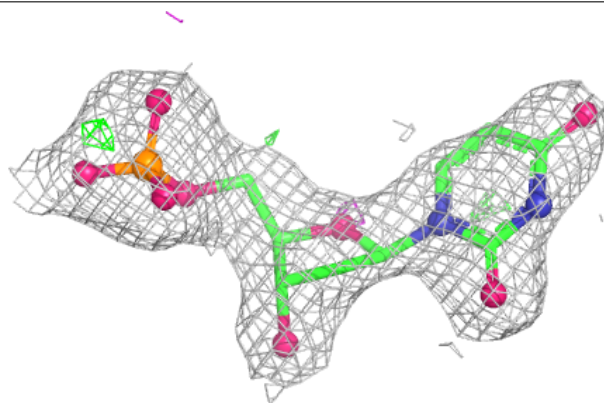


Electron density around UMP C 611:

$2mF_o-DF_c$ (at 0.7 rmsd) in gray
 mF_o-DF_c (at 3 rmsd) in purple (negative)
and green (positive)

**Electron density around UMP D 711:**

$2mF_o-DF_c$ (at 0.7 rmsd) in gray
 mF_o-DF_c (at 3 rmsd) in purple (negative)
and green (positive)



6.5 Other polymers [i](#)

There are no such residues in this entry.