



Full wwPDB X-ray Structure Validation Report ⓘ

Nov 2, 2021 – 12:52 PM EDT

PDB ID : 1J3J
Title : Double mutant (C59R+S108N) Plasmodium falciparum dihydrofolate reductase-thymidylate synthase (PfDHFR-TS) complexed with pyrimethamine, NADPH, and dUMP
Authors : Yuvaniyama, J.; Chitnumsub, P.; Kamchonwongpaisan, S.; Vanichtanankul, J.; Sirawaraporn, W.; Taylor, P.; Walkinshaw, M.; Yuthavong, Y.
Deposited on : 2003-02-03
Resolution : 2.30 Å(reported)

This is a Full wwPDB X-ray Structure Validation Report for a publicly released PDB entry.

We welcome your comments at validation@mail.wwpdb.org

A user guide is available at

<https://www.wwpdb.org/validation/2017/XrayValidationReportHelp>

with specific help available everywhere you see the ⓘ symbol.

The following versions of software and data (see [references ⓘ](#)) were used in the production of this report:

MolProbity : 4.02b-467
Mogul : 1.8.5 (274361), CSD as541be (2020)
Xtrriage (Phenix) : 1.13
EDS : 2.23.2
buster-report : 1.1.7 (2018)
Percentile statistics : 20191225.v01 (using entries in the PDB archive December 25th 2019)
Refmac : 5.8.0158
CCP4 : 7.0.044 (Gargrove)
Ideal geometry (proteins) : Engh & Huber (2001)
Ideal geometry (DNA, RNA) : Parkinson et al. (1996)
Validation Pipeline (wwPDB-VP) : 2.23.2

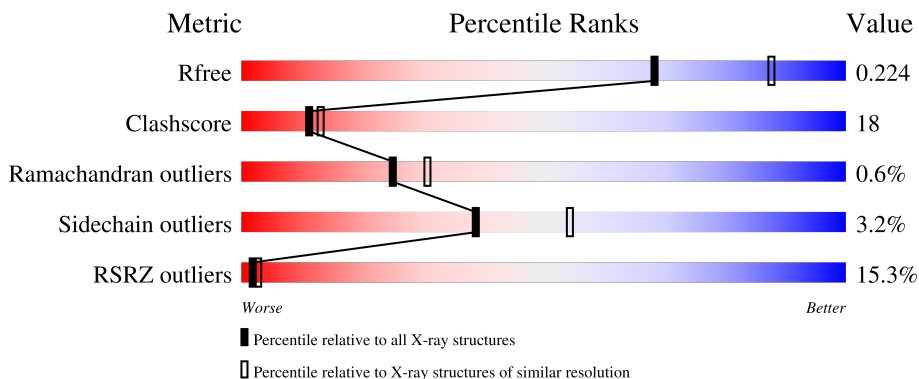
1 Overall quality at a glance

The following experimental techniques were used to determine the structure:

X-RAY DIFFRACTION

The reported resolution of this entry is 2.30 Å.

Percentile scores (ranging between 0-100) for global validation metrics of the entry are shown in the following graphic. The table shows the number of entries on which the scores are based.



Metric	Whole archive (#Entries)	Similar resolution (#Entries, resolution range(Å))
R_{free}	130704	5042 (2.30-2.30)
Clashscore	141614	5643 (2.30-2.30)
Ramachandran outliers	138981	5575 (2.30-2.30)
Sidechain outliers	138945	5575 (2.30-2.30)
RSRZ outliers	127900	4938 (2.30-2.30)

The table below summarises the geometric issues observed across the polymeric chains and their fit to the electron density. The red, orange, yellow and green segments of the lower bar indicate the fraction of residues that contain outliers for ≥ 3 , 2, 1 and 0 types of geometric quality criteria respectively. A grey segment represents the fraction of residues that are not modelled. The numeric value for each fraction is indicated below the corresponding segment, with a dot representing fractions $\leq 5\%$. The upper red bar (where present) indicates the fraction of residues that have poor fit to the electron density. The numeric value is given above the bar.

Mol	Chain	Length	Quality of chain
1	A	280	 10% 57% 19% 21%
1	B	280	 32% 41% 31% 5% 23%
2	C	328	 8% 73% 24% 3% 3%
2	D	328	 7% 81% 17% 3% 3%

The following table lists non-polymeric compounds, carbohydrate monomers and non-standard

residues in protein, DNA, RNA chains that are outliers for geometric or electron-density-fit criteria:

Mol	Type	Chain	Res	Chirality	Geometry	Clashes	Electron density
3	CP6	A	609	-	X	-	-
3	CP6	B	709	-	X	-	-

2 Entry composition

There are 6 unique types of molecules in this entry. The entry contains 9961 atoms, of which 0 are hydrogens and 0 are deuteriums.

In the tables below, the ZeroOcc column contains the number of atoms modelled with zero occupancy, the AltConf column contains the number of residues with at least one atom in alternate conformation and the Trace column contains the number of residues modelled with at most 2 atoms.

- Molecule 1 is a protein called Bifunctional dihydrofolate reductase-thymidylate synthase.

Mol	Chain	Residues	Atoms					ZeroOcc	AltConf	Trace
			Total	C	N	O	S			
1	A	221	Total 1837	C 1188	N 298	O 339	S 12	0	0	0
1	B	216	Total 1795	C 1163	N 290	O 330	S 12	0	0	0

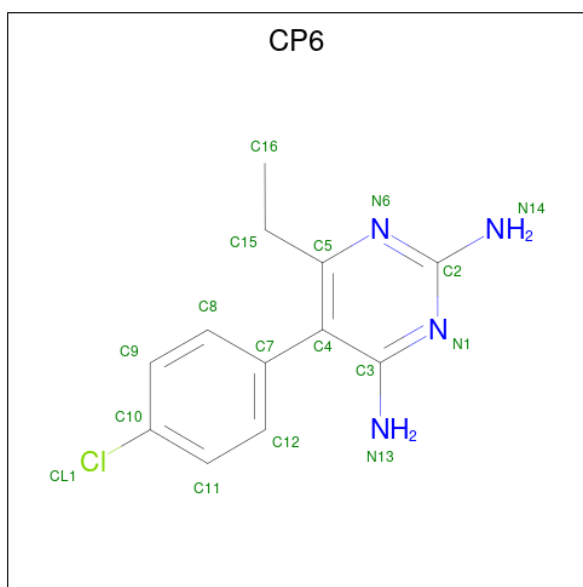
There are 4 discrepancies between the modelled and reference sequences:

Chain	Residue	Modelled	Actual	Comment	Reference
A	59	ARG	CYS	engineered mutation	UNP P13922
A	108	ASN	SER	engineered mutation	UNP P13922
B	59	ARG	CYS	engineered mutation	UNP P13922
B	108	ASN	SER	engineered mutation	UNP P13922

- Molecule 2 is a protein called Bifunctional dihydrofolate reductase-thymidylate synthase.

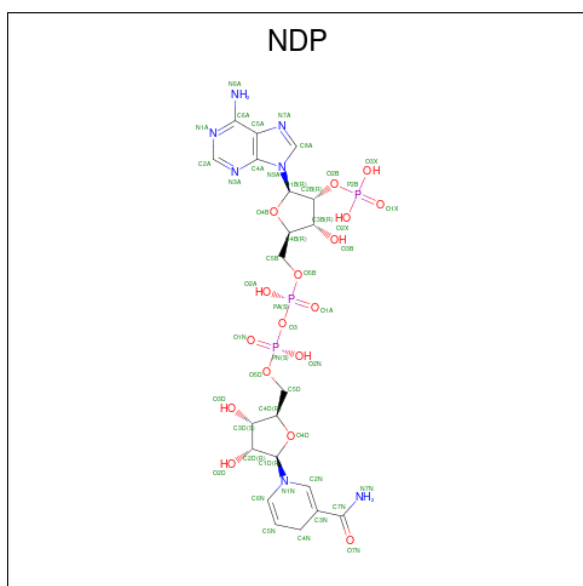
Mol	Chain	Residues	Atoms					ZeroOcc	AltConf	Trace
			Total	C	N	O	S			
2	C	326	Total 2713	C 1747	N 456	O 495	S 15	0	0	0
2	D	326	Total 2713	C 1747	N 456	O 495	S 15	0	0	0

- Molecule 3 is 5-(4-CHLORO-PHENYL)-6-ETHYL-PYRIMIDINE-2,4-DIAMINE (three-letter code: CP6) (formula: C₁₂H₁₃ClN₄).



Mol	Chain	Residues	Atoms				ZeroOcc	AltConf
			Total	C	Cl	N		
3	A	1	17	12	1	4	0	0
3	B	1	17	12	1	4	0	0

- Molecule 4 is NADPH DIHYDRO-NICOTINAMIDE-ADENINE-DINUCLEOTIDE PHOSPHATE (three-letter code: NDP) (formula: $C_{21}H_{30}N_7O_{17}P_3$).



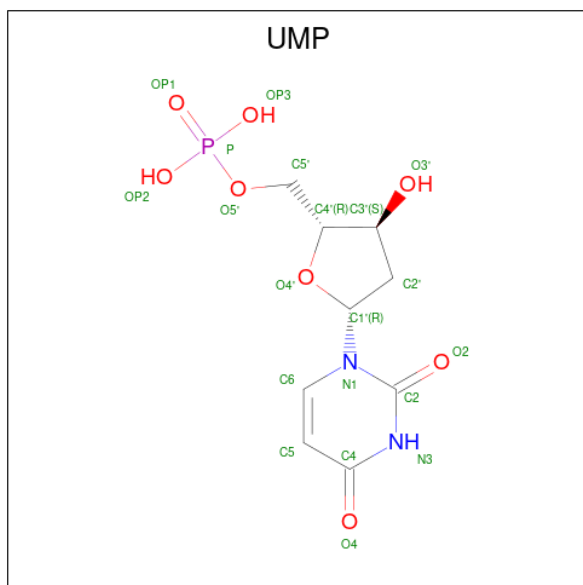
Mol	Chain	Residues	Atoms					ZeroOcc	AltConf
			Total	C	N	O	P		
4	A	1	48	21	7	17	3	0	0

Continued on next page...

Continued from previous page...

Mol	Chain	Residues	Atoms				ZeroOcc	AltConf	
			Total	C	N	O			P
4	B	1	48	21	7	17	3	0	0

- Molecule 5 is 2'-DEOXYURIDINE 5'-MONOPHOSPHATE (three-letter code: UMP) (formula: C₉H₁₃N₂O₈P).



Mol	Chain	Residues	Atoms				ZeroOcc	AltConf	
			Total	C	N	O			P
5	C	1	20	9	2	8	1	0	0
5	D	1	20	9	2	8	1	0	0

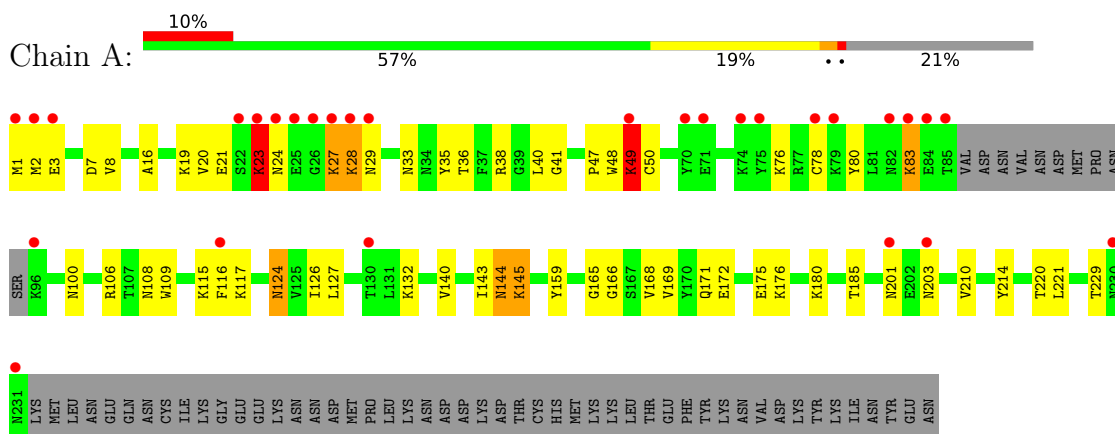
- Molecule 6 is water.

Mol	Chain	Residues	Atoms		ZeroOcc	AltConf
6	A	125	Total	O	0	0
			125	125		
6	B	60	Total	O	0	0
			60	60		
6	C	265	Total	O	0	0
			265	265		
6	D	283	Total	O	0	0
			283	283		

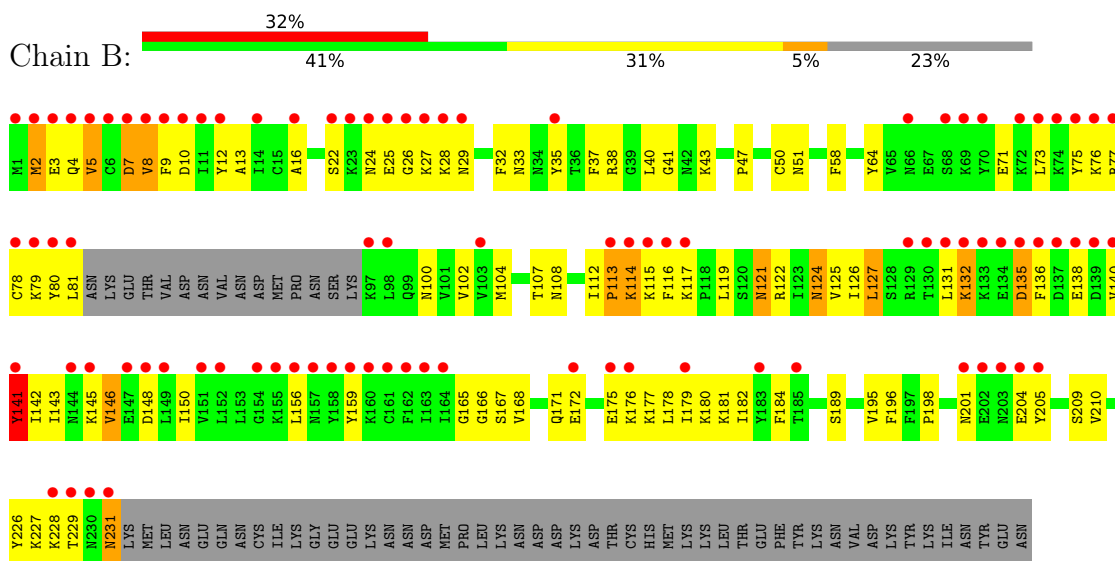
3 Residue-property plots [i](#)

These plots are drawn for all protein, RNA, DNA and oligosaccharide chains in the entry. The first graphic for a chain summarises the proportions of the various outlier classes displayed in the second graphic. The second graphic shows the sequence view annotated by issues in geometry and electron density. Residues are color-coded according to the number of geometric quality criteria for which they contain at least one outlier: green = 0, yellow = 1, orange = 2 and red = 3 or more. A red dot above a residue indicates a poor fit to the electron density ($RSRZ > 2$). Stretches of 2 or more consecutive residues without any outlier are shown as a green connector. Residues present in the sample, but not in the model, are shown in grey.

- Molecule 1: Bifunctional dihydrofolate reductase-thymidylate synthase

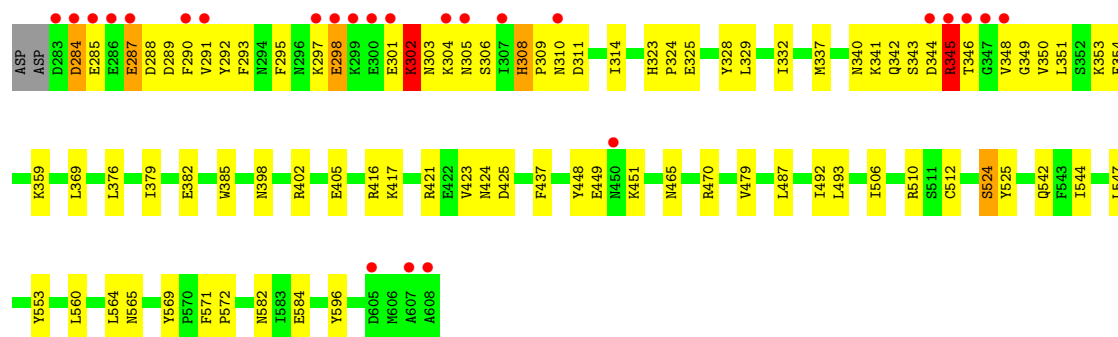


- Molecule 1: Bifunctional dihydrofolate reductase-thymidylate synthase

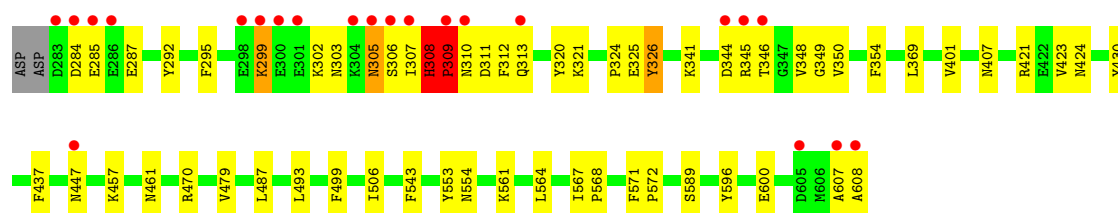
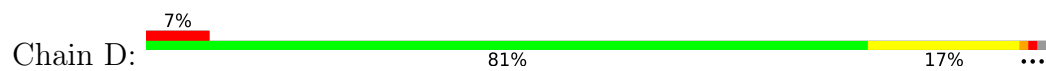


- Molecule 2: Bifunctional dihydrofolate reductase-thymidylate synthase





- Molecule 2: Bifunctional dihydrofolate reductase-thymidylate synthase



4 Data and refinement statistics

Property	Value	Source
Space group	P 21 21 21	Depositor
Cell constants a, b, c, α , β , γ	56.34Å 155.00Å 164.00Å 90.00° 90.00° 90.00°	Depositor
Resolution (Å)	23.83 – 2.30 23.83 – 2.30	Depositor EDS
% Data completeness (in resolution range)	94.3 (23.83-2.30) 94.4 (23.83-2.30)	Depositor EDS
R_{merge}	(Not available)	Depositor
R_{sym}	0.06	Depositor
$\langle I/\sigma(I) \rangle$ ¹	2.02 (at 2.31Å)	Xtrriage
Refinement program	CNS 1.1	Depositor
R, R_{free}	0.198 , 0.231 0.188 , 0.224	Depositor DCC
R_{free} test set	3087 reflections (5.05%)	wwPDB-VP
Wilson B-factor (Å ²)	28.5	Xtrriage
Anisotropy	0.124	Xtrriage
Bulk solvent k_{sol} (e/Å ³), B_{sol} (Å ²)	0.34 , 55.0	EDS
L-test for twinning ²	$\langle L \rangle = 0.48$, $\langle L^2 \rangle = 0.31$	Xtrriage
Estimated twinning fraction	No twinning to report.	Xtrriage
F_o, F_c correlation	0.94	EDS
Total number of atoms	9961	wwPDB-VP
Average B, all atoms (Å ²)	39.0	wwPDB-VP

Xtrriage's analysis on translational NCS is as follows: *The largest off-origin peak in the Patterson function is 3.99% of the height of the origin peak. No significant pseudotranslation is detected.*

¹Intensities estimated from amplitudes.

²Theoretical values of $\langle |L| \rangle$, $\langle L^2 \rangle$ for acentric reflections are 0.5, 0.333 respectively for untwinned datasets, and 0.375, 0.2 for perfectly twinned datasets.

5 Model quality i

5.1 Standard geometry i

Bond lengths and bond angles in the following residue types are not validated in this section: UMP, CP6, NDP

The Z score for a bond length (or angle) is the number of standard deviations the observed value is removed from the expected value. A bond length (or angle) with $|Z| > 5$ is considered an outlier worth inspection. RMSZ is the root-mean-square of all Z scores of the bond lengths (or angles).

Mol	Chain	Bond lengths		Bond angles	
		RMSZ	# Z >5	RMSZ	# Z >5
1	A	0.57	0/1871	0.82	2/2515 (0.1%)
1	B	0.59	1/1829 (0.1%)	0.86	3/2460 (0.1%)
2	C	0.59	1/2784 (0.0%)	0.86	6/3766 (0.2%)
2	D	0.57	0/2784	0.84	4/3766 (0.1%)
All	All	0.58	2/9268 (0.0%)	0.85	15/12507 (0.1%)

Chiral center outliers are detected by calculating the chiral volume of a chiral center and verifying if the center is modelled as a planar moiety or with the opposite hand. A planarity outlier is detected by checking planarity of atoms in a peptide group, atoms in a mainchain group or atoms of a sidechain that are expected to be planar.

Mol	Chain	#Chirality outliers	#Planarity outliers
2	C	0	1
2	D	0	1
All	All	0	2

All (2) bond length outliers are listed below:

Mol	Chain	Res	Type	Atoms	Z	Observed(Å)	Ideal(Å)
1	B	8	VAL	CB-CG2	-5.82	1.40	1.52
2	C	310	ASN	CB-CG	5.52	1.63	1.51

All (15) bond angle outliers are listed below:

Mol	Chain	Res	Type	Atoms	Z	Observed(°)	Ideal(°)
1	B	2	MET	N-CA-C	9.10	135.56	111.00
2	C	298	GLU	N-CA-C	-8.74	87.40	111.00
1	A	23	LYS	N-CA-C	-7.23	91.49	111.00
2	C	298	GLU	N-CA-CB	-7.04	97.92	110.60
2	C	345	ARG	N-CA-C	-6.72	92.85	111.00

Continued on next page...

Continued from previous page...

Mol	Chain	Res	Type	Atoms	Z	Observed(°)	Ideal(°)
1	B	135	ASP	N-CA-C	5.95	127.06	111.00
2	D	308	HIS	N-CA-C	5.94	127.04	111.00
2	D	543	PHE	N-CA-C	-5.85	95.22	111.00
1	B	141	TYR	N-CA-C	5.75	126.52	111.00
2	D	401	VAL	N-CA-C	-5.48	96.20	111.00
2	C	351	LEU	N-CA-C	-5.39	96.44	111.00
2	D	309	PRO	N-CA-C	5.31	125.91	112.10
2	C	302	LYS	N-CA-C	5.20	125.03	111.00
1	A	229	THR	N-CA-C	5.19	125.00	111.00
2	C	425	ASP	N-CA-C	-5.10	97.23	111.00

There are no chirality outliers.

All (2) planarity outliers are listed below:

Mol	Chain	Res	Type	Group
2	C	525	TYR	Sidechain
2	D	326	TYR	Sidechain

5.2 Too-close contacts

In the following table, the Non-H and H(model) columns list the number of non-hydrogen atoms and hydrogen atoms in the chain respectively. The H(added) column lists the number of hydrogen atoms added and optimized by MolProbity. The Clashes column lists the number of clashes within the asymmetric unit, whereas Symm-Clashes lists symmetry-related clashes.

Mol	Chain	Non-H	H(model)	H(added)	Clashes	Symm-Clashes
1	A	1837	0	1868	61	0
1	B	1795	0	1823	133	0
2	C	2713	0	2638	80	0
2	D	2713	0	2638	64	0
3	A	17	0	13	0	0
3	B	17	0	13	2	0
4	A	48	0	26	14	0
4	B	48	0	26	12	0
5	C	20	0	11	0	0
5	D	20	0	11	0	0
6	A	125	0	0	5	0
6	B	60	0	0	37	0
6	C	265	0	0	13	0
6	D	283	0	0	23	0
All	All	9961	0	9067	327	0

The all-atom clashscore is defined as the number of clashes found per 1000 atoms (including hydrogen atoms). The all-atom clashscore for this structure is 18.

All (327) close contacts within the same asymmetric unit are listed below, sorted by their clash magnitude.

Atom-1	Atom-2	Interatomic distance (Å)	Clash overlap (Å)
1:B:78:CYS:HA	6:B:1635:HOH:O	1.40	1.20
1:B:178:LEU:HG	6:B:1639:HOH:O	1.43	1.19
2:C:346:THR:HA	6:C:1377:HOH:O	1.48	1.12
1:A:165:GLY:HA3	4:A:610:NDP:H5N	1.31	1.11
2:D:309:PRO:HA	6:D:1684:HOH:O	1.49	1.09
1:A:140:VAL:HB	6:A:1679:HOH:O	1.55	1.06
1:B:131:LEU:HB3	6:B:1628:HOH:O	1.56	1.05
1:B:4:GLN:O	1:B:8:VAL:HG23	1.57	1.03
1:B:114:LYS:HD2	1:B:114:LYS:H	1.24	0.98
1:B:179:ILE:HG23	6:B:1640:HOH:O	1.68	0.94
1:B:140:VAL:HG12	1:B:140:VAL:O	1.67	0.93
1:B:4:GLN:HG3	1:B:7:ASP:OD2	1.69	0.93
1:B:210:VAL:HB	6:B:1645:HOH:O	1.69	0.91
1:B:24:ASN:HB3	6:B:1001:HOH:O	1.69	0.91
1:A:3:GLU:OE1	1:A:80:TYR:HD1	1.51	0.91
2:C:344:ASP:HB2	2:D:470:ARG:NH1	1.87	0.88
1:B:12:TYR:HA	6:B:1640:HOH:O	1.73	0.88
2:C:344:ASP:HB2	2:D:470:ARG:HH12	1.39	0.88
1:B:136:PHE:CE2	6:B:1628:HOH:O	2.28	0.86
1:B:138:GLU:O	1:B:141:TYR:CE1	2.30	0.84
2:C:345:ARG:HE	2:C:348:VAL:HG21	1.41	0.83
1:B:136:PHE:HE2	6:B:1628:HOH:O	1.60	0.83
1:B:176:LYS:C	6:B:1639:HOH:O	2.17	0.82
1:B:2:MET:HE2	1:B:2:MET:HA	1.62	0.82
2:C:332:ILE:HD13	2:C:560:LEU:HD22	1.60	0.82
1:B:2:MET:HA	1:B:2:MET:CE	2.10	0.81
2:D:348:VAL:HA	6:D:1314:HOH:O	1.79	0.81
1:B:165:GLY:HA3	4:B:710:NDP:H5N	1.61	0.81
2:C:376:LEU:HD22	2:C:379:ILE:HD11	1.63	0.80
1:B:81:LEU:HD12	6:B:1635:HOH:O	1.80	0.80
1:A:78:CYS:HB3	1:A:83:LYS:O	1.84	0.78
4:B:710:NDP:H52N	6:B:1627:HOH:O	1.82	0.77
2:C:303:ASN:HB3	2:C:306:SER:OG	1.85	0.76
1:B:124:ASN:H	1:B:124:ASN:HD22	1.30	0.76
1:B:124:ASN:HD22	1:B:124:ASN:N	1.84	0.75
1:B:29:ASN:HB2	1:B:32:PHE:CE1	2.22	0.75
1:B:177:LYS:HD3	6:B:1638:HOH:O	1.87	0.73

Continued on next page...

Continued from previous page...

Atom-1	Atom-2	Interatomic distance (Å)	Clash overlap (Å)
4:A:610:NDP:H8A	4:A:610:NDP:H52A	1.71	0.73
1:A:126:ILE:HG13	6:A:1679:HOH:O	1.90	0.72
1:B:41:GLY:HA2	1:B:47:PRO:HD3	1.73	0.71
1:B:182:ILE:HB	1:B:226:TYR:HB2	1.72	0.71
1:B:9:PHE:HE2	1:B:80:TYR:HE2	1.38	0.71
1:B:107:THR:HB	4:B:710:NDP:O2A	1.91	0.71
1:B:8:VAL:HG22	6:B:1636:HOH:O	1.90	0.70
1:B:81:LEU:CD1	6:B:1635:HOH:O	2.38	0.70
2:C:285:GLU:C	2:C:287:GLU:H	1.94	0.69
1:B:112:ILE:HB	1:B:117:LYS:HD3	1.74	0.69
2:D:457:LYS:HE2	6:D:1229:HOH:O	1.93	0.69
1:A:171:GLN:HG3	1:A:175:GLU:OE2	1.93	0.68
1:B:3:GLU:HG2	1:B:80:TYR:HE1	1.59	0.68
2:C:284:ASP:O	2:C:287:GLU:HB3	1.93	0.68
1:B:4:GLN:C	1:B:8:VAL:HG23	2.14	0.68
1:A:210:VAL:HG12	6:A:1665:HOH:O	1.93	0.68
2:D:447:ASN:HA	6:D:1220:HOH:O	1.94	0.68
2:D:308:HIS:O	2:D:311:ASP:HB2	1.94	0.68
1:B:40:LEU:O	4:B:710:NDP:H2N	1.94	0.67
1:B:171:GLN:HG3	1:B:175:GLU:OE2	1.95	0.67
1:B:71:GLU:O	1:B:75:TYR:HB2	1.95	0.67
1:A:48:TRP:O	1:A:49:LYS:HB2	1.95	0.67
1:B:171:GLN:O	1:B:175:GLU:HG3	1.95	0.67
1:A:24:ASN:HB2	1:A:28:LYS:HE2	1.77	0.66
2:C:376:LEU:HD22	2:C:379:ILE:CD1	2.26	0.66
2:C:309:PRO:C	2:C:311:ASP:N	2.49	0.65
4:B:710:NDP:H6N	6:B:1627:HOH:O	1.95	0.65
1:B:140:VAL:O	1:B:140:VAL:CG1	2.42	0.65
2:C:344:ASP:OD1	2:C:345:ARG:N	2.31	0.64
1:B:114:LYS:H	1:B:114:LYS:CD	1.99	0.64
2:C:309:PRO:C	2:C:311:ASP:H	2.00	0.64
1:B:13:ALA:N	6:B:1640:HOH:O	2.31	0.63
1:A:106:ARG:HE	4:A:610:NDP:P2B	2.22	0.63
2:C:344:ASP:O	6:C:1185:HOH:O	2.15	0.63
1:B:176:LYS:O	6:B:1639:HOH:O	2.15	0.62
2:D:421:ARG:NE	6:D:1206:HOH:O	2.20	0.62
1:B:76:LYS:HA	1:B:79:LYS:HB3	1.81	0.62
1:B:121:ASN:N	1:B:121:ASN:HD22	1.97	0.62
2:C:285:GLU:C	2:C:287:GLU:N	2.51	0.62
2:C:341:LYS:HE3	6:C:1362:HOH:O	2.00	0.62
1:A:127:LEU:HD23	1:A:143:ILE:HG13	1.81	0.61

Continued on next page...

Continued from previous page...

Atom-1	Atom-2	Interatomic distance (Å)	Clash overlap (Å)
1:B:104:MET:HB2	1:B:108:ASN:HD22	1.65	0.61
1:A:41:GLY:HA2	1:A:47:PRO:HD3	1.81	0.61
1:B:127:LEU:HD12	1:B:143:ILE:HD11	1.81	0.61
1:B:9:PHE:CE2	1:B:80:TYR:HE2	2.18	0.61
2:D:310:ASN:O	2:D:313:GLN:HB2	2.00	0.61
1:A:27:LYS:HD2	1:A:27:LYS:O	2.01	0.60
2:C:344:ASP:CG	2:C:345:ARG:HG2	2.22	0.60
1:A:108:ASN:OD1	4:A:610:NDP:H2D	2.01	0.60
1:B:8:VAL:CG2	6:B:1636:HOH:O	2.47	0.60
2:C:287:GLU:O	2:C:290:PHE:HB3	2.02	0.60
2:D:421:ARG:NH2	6:D:1206:HOH:O	2.22	0.60
1:B:229:THR:C	1:B:231:ASN:N	2.52	0.60
1:B:29:ASN:HD22	1:B:32:PHE:HE1	1.49	0.59
2:C:542:GLN:NE2	6:C:1046:HOH:O	2.30	0.59
2:C:493:LEU:C	2:C:493:LEU:HD12	2.22	0.59
1:A:2:MET:O	1:A:2:MET:HG3	2.03	0.59
1:A:210:VAL:CG1	6:A:1665:HOH:O	2.49	0.59
1:B:9:PHE:HE2	1:B:80:TYR:CE2	2.19	0.59
1:B:166:GLY:HA2	4:B:710:NDP:C5N	2.33	0.59
1:B:171:GLN:HE21	1:B:175:GLU:CG	2.16	0.58
2:C:301:GLU:O	2:C:304:LYS:HG3	2.02	0.58
2:D:457:LYS:HG2	6:D:1229:HOH:O	2.03	0.58
1:B:9:PHE:HZ	1:B:81:LEU:HD23	1.69	0.58
1:B:25:GLU:HA	1:B:25:GLU:OE1	2.03	0.58
2:C:344:ASP:OD2	2:C:345:ARG:HG2	2.04	0.58
2:D:303:ASN:HB3	2:D:306:SER:OG	2.04	0.58
1:B:121:ASN:N	1:B:121:ASN:ND2	2.52	0.58
1:A:40:LEU:O	4:A:610:NDP:H2N	2.02	0.58
1:B:5:VAL:HA	1:B:8:VAL:HB	1.86	0.58
1:A:109:TRP:CE2	1:A:117:LYS:HD2	2.39	0.58
1:B:3:GLU:N	6:B:1636:HOH:O	2.37	0.57
2:C:301:GLU:OE1	2:C:337:MET:CE	2.52	0.57
2:D:346:THR:CG2	2:D:348:VAL:HG23	2.34	0.57
1:A:109:TRP:CZ2	1:A:117:LYS:HD2	2.39	0.57
1:B:210:VAL:HG23	1:B:210:VAL:O	2.05	0.57
2:C:301:GLU:OE1	2:C:337:MET:HE3	2.05	0.57
2:C:465:ASN:O	2:D:345:ARG:NH2	2.38	0.57
1:B:2:MET:CE	1:B:2:MET:CA	2.80	0.56
1:B:229:THR:C	1:B:231:ASN:H	2.08	0.56
2:C:284:ASP:OD1	2:C:284:ASP:N	2.38	0.56
1:A:3:GLU:OE1	1:A:80:TYR:CD1	2.44	0.56

Continued on next page...

Continued from previous page...

Atom-1	Atom-2	Interatomic distance (Å)	Clash overlap (Å)
1:B:131:LEU:HD22	6:B:1628:HOH:O	2.04	0.56
2:C:344:ASP:OD2	2:C:553:TYR:HE1	1.88	0.55
2:D:421:ARG:CZ	6:D:1206:HOH:O	2.53	0.55
2:D:493:LEU:HD12	2:D:493:LEU:C	2.27	0.55
1:A:124:ASN:N	1:A:124:ASN:HD22	2.05	0.55
1:B:168:VAL:HG11	4:B:710:NDP:H8A	1.88	0.55
2:C:301:GLU:CG	2:C:304:LYS:HE2	2.37	0.55
1:A:172:GLU:OE2	4:A:610:NDP:N7A	2.40	0.54
1:B:9:PHE:CE2	1:B:80:TYR:CE2	2.95	0.54
2:C:340:ASN:HB3	2:D:499:PHE:CE1	2.42	0.54
1:A:24:ASN:HB2	1:A:28:LYS:CE	2.38	0.54
1:A:27:LYS:C	1:A:29:ASN:H	2.11	0.54
1:A:169:VAL:HG23	4:A:610:NDP:O1A	2.08	0.54
2:C:344:ASP:CB	2:D:470:ARG:HH12	2.18	0.54
1:B:9:PHE:CZ	1:B:81:LEU:HD23	2.42	0.54
1:B:142:ILE:HG22	1:B:143:ILE:N	2.23	0.54
2:C:350:VAL:HG12	2:C:553:TYR:CD1	2.43	0.54
1:B:12:TYR:CD1	1:B:181:LYS:HB2	2.43	0.53
1:B:167:SER:HB3	4:B:710:NDP:O2N	2.08	0.53
1:A:166:GLY:HA2	4:A:610:NDP:C5N	2.39	0.53
1:B:5:VAL:HG11	1:B:150:ILE:HD12	1.91	0.53
2:D:309:PRO:N	6:D:1683:HOH:O	2.41	0.53
1:B:12:TYR:CE1	1:B:180:LYS:HD3	2.44	0.53
1:B:131:LEU:HD13	6:B:1628:HOH:O	2.07	0.53
1:B:12:TYR:CA	6:B:1640:HOH:O	2.45	0.53
1:A:127:LEU:O	4:A:610:NDP:H1B	2.09	0.53
2:C:288:ASP:HA	2:C:291:VAL:HG23	1.91	0.53
2:C:402:ARG:HG2	2:C:402:ARG:HH11	1.73	0.53
2:D:344:ASP:HA	6:D:1328:HOH:O	2.07	0.53
2:D:572:PRO:HB3	2:D:596:TYR:HA	1.90	0.53
1:B:3:GLU:HG2	1:B:80:TYR:CE1	2.42	0.53
1:B:119:LEU:HB3	1:B:122:ARG:CZ	2.39	0.53
2:C:448:TYR:O	2:C:451:LYS:HB2	2.09	0.52
2:D:607:ALA:O	2:D:608:ALA:CB	2.56	0.52
1:B:9:PHE:HZ	1:B:81:LEU:CD2	2.23	0.52
1:B:124:ASN:N	1:B:124:ASN:ND2	2.51	0.52
1:A:8:VAL:HA	1:A:76:LYS:HD3	1.90	0.52
2:C:572:PRO:HB3	2:C:596:TYR:HA	1.91	0.52
1:B:76:LYS:O	1:B:80:TYR:N	2.43	0.52
1:B:113:PRO:O	1:B:117:LYS:HG3	2.09	0.52
1:A:20:VAL:HG12	1:A:21:GLU:N	2.24	0.51

Continued on next page...

Continued from previous page...

Atom-1	Atom-2	Interatomic distance (Å)	Clash overlap (Å)
4:B:710:NDP:H2D	6:B:1627:HOH:O	2.10	0.51
1:B:132:LYS:HE2	1:B:135:ASP:OD2	2.10	0.51
2:C:421:ARG:NH2	6:C:1119:HOH:O	2.40	0.51
1:B:115:LYS:C	6:B:1631:HOH:O	2.49	0.51
1:B:131:LEU:CB	6:B:1628:HOH:O	2.32	0.51
2:C:421:ARG:NE	6:C:1119:HOH:O	2.25	0.51
2:D:346:THR:HB	2:D:348:VAL:HG23	1.93	0.51
1:A:166:GLY:HA2	4:A:610:NDP:C6N	2.41	0.51
2:C:343:SER:CB	6:C:1378:HOH:O	2.58	0.51
2:C:398:ASN:ND2	6:C:1517:HOH:O	2.22	0.50
2:D:344:ASP:C	2:D:346:THR:H	2.13	0.50
1:B:29:ASN:HB2	1:B:32:PHE:CZ	2.46	0.50
1:A:100:ASN:OD1	1:A:159:TYR:HB3	2.12	0.50
2:C:301:GLU:HG3	2:C:304:LYS:HE2	1.92	0.50
2:C:584:GLU:HB2	6:C:1061:HOH:O	2.10	0.50
1:B:166:GLY:HA2	4:B:710:NDP:H5N	1.94	0.50
2:C:353:LYS:NZ	6:C:1358:HOH:O	2.45	0.50
1:A:168:VAL:HB	4:A:610:NDP:H51A	1.94	0.49
2:C:329:LEU:HD22	2:C:564:LEU:HD12	1.94	0.49
1:B:29:ASN:ND2	1:B:32:PHE:CE1	2.78	0.49
2:C:290:PHE:HB2	2:D:320:TYR:OH	2.12	0.49
2:C:342:GLN:O	2:C:349:GLY:HA2	2.11	0.49
1:B:145:LYS:O	1:B:148:ASP:HB2	2.12	0.49
1:B:171:GLN:HE21	1:B:175:GLU:HG3	1.77	0.49
2:D:461:ASN:ND2	6:D:1229:HOH:O	2.44	0.49
2:D:321:LYS:HB3	2:D:326:TYR:CD2	2.48	0.49
2:D:312:PHE:HE1	2:D:561:LYS:HA	1.77	0.49
2:C:292:TYR:O	2:C:295:PHE:HB3	2.13	0.49
2:C:512:CYS:SG	2:C:547:LEU:HD22	2.53	0.49
2:C:382:GLU:O	2:C:385:TRP:HB3	2.12	0.49
1:B:35:TYR:CZ	1:B:38:ARG:HD3	2.48	0.48
1:B:125:VAL:HG12	1:B:126:ILE:N	2.28	0.48
2:C:302:LYS:HB2	6:C:1359:HOH:O	2.13	0.48
1:A:35:TYR:CZ	1:A:38:ARG:HD3	2.48	0.48
1:B:4:GLN:N	6:B:1636:HOH:O	2.24	0.48
2:C:359:LYS:HG2	2:C:544:ILE:HG12	1.95	0.48
1:A:24:ASN:CB	1:A:28:LYS:NZ	2.76	0.48
1:B:210:VAL:HG21	2:D:326:TYR:HE2	1.76	0.48
2:C:305:ASN:O	2:C:308:HIS:NE2	2.47	0.48
2:C:402:ARG:HD3	2:C:405:GLU:OE1	2.14	0.48
1:B:131:LEU:CG	6:B:1628:HOH:O	2.60	0.48

Continued on next page...

Continued from previous page...

Atom-1	Atom-2	Interatomic distance (Å)	Clash overlap (Å)
2:D:309:PRO:C	2:D:311:ASP:N	2.62	0.48
1:B:41:GLY:H	1:B:195:VAL:HG23	1.79	0.48
1:B:4:GLN:C	1:B:8:VAL:CG2	2.82	0.48
2:C:344:ASP:OD2	2:C:553:TYR:CE1	2.67	0.48
2:C:416:ARG:O	2:C:417:LYS:HB2	2.13	0.47
2:D:302:LYS:O	2:D:305:ASN:ND2	2.46	0.47
1:B:75:TYR:O	1:B:79:LYS:HB2	2.15	0.47
1:A:20:VAL:CG1	1:A:21:GLU:N	2.77	0.47
1:B:77:ARG:O	1:B:81:LEU:HG	2.15	0.47
1:B:166:GLY:N	4:B:710:NDP:O1A	2.41	0.47
1:B:176:LYS:CB	6:B:1639:HOH:O	2.63	0.47
1:B:205:TYR:HA	1:B:227:LYS:O	2.14	0.47
2:C:324:PRO:HB2	2:C:571:PHE:HE2	1.79	0.47
1:A:214:TYR:O	1:A:220:THR:HA	2.15	0.47
1:B:29:ASN:ND2	1:B:32:PHE:HE1	2.12	0.47
1:B:168:VAL:O	1:B:172:GLU:HG2	2.15	0.47
1:A:115:LYS:HE3	1:A:116:PHE:CE2	2.49	0.47
2:D:303:ASN:O	2:D:307:ILE:HG12	2.15	0.47
2:C:524:SER:OG	6:C:1523:HOH:O	2.20	0.47
1:A:3:GLU:H	1:A:3:GLU:HG3	1.42	0.46
1:A:24:ASN:HB2	1:A:28:LYS:NZ	2.31	0.46
1:B:10:ASP:OD2	1:B:73:LEU:HD22	2.15	0.46
1:B:26:GLY:C	1:B:27:LYS:HG2	2.36	0.46
1:B:138:GLU:C	1:B:140:VAL:H	2.19	0.46
2:C:354:PHE:CE2	2:D:506:ILE:HG13	2.51	0.46
2:D:423:VAL:O	2:D:424:ASN:HB2	2.15	0.46
1:A:201:ASN:OD1	1:A:203:ASN:HB2	2.16	0.46
2:C:582:ASN:HB3	6:C:1061:HOH:O	2.15	0.46
2:D:307:ILE:HG22	2:D:312:PHE:CE2	2.51	0.46
2:D:600:GLU:HG3	6:D:1691:HOH:O	2.16	0.46
1:A:109:TRP:CE3	1:A:126:ILE:HD11	2.51	0.45
1:B:58:PHE:CZ	3:B:709:CP6:H12	2.51	0.45
1:B:177:LYS:CD	6:B:1638:HOH:O	2.55	0.45
2:C:328:TYR:CZ	2:C:332:ILE:HD11	2.52	0.45
1:B:100:ASN:OD1	1:B:159:TYR:HB3	2.16	0.45
2:D:309:PRO:O	2:D:310:ASN:C	2.48	0.45
1:B:80:TYR:O	1:B:81:LEU:C	2.55	0.45
1:B:41:GLY:N	1:B:195:VAL:HG23	2.32	0.45
2:D:344:ASP:CA	6:D:1328:HOH:O	2.64	0.45
1:A:166:GLY:HA2	4:A:610:NDP:H5N	1.99	0.45
1:A:221:LEU:N	1:A:221:LEU:HD23	2.32	0.45

Continued on next page...

Continued from previous page...

Atom-1	Atom-2	Interatomic distance (Å)	Clash overlap (Å)
1:A:23:LYS:H	1:A:23:LYS:HG2	1.49	0.45
2:C:437:PHE:CD1	2:D:479:VAL:HB	2.51	0.45
2:D:607:ALA:O	2:D:608:ALA:HB3	2.16	0.45
1:A:35:TYR:CE2	1:A:38:ARG:HD3	2.51	0.45
2:D:292:TYR:O	2:D:295:PHE:HB3	2.16	0.45
2:C:297:LYS:HA	2:C:297:LYS:HD3	1.61	0.44
1:B:201:ASN:HB3	1:B:204:GLU:HG3	1.98	0.44
1:B:51:ASN:HB2	6:B:1008:HOH:O	2.17	0.44
2:C:305:ASN:O	2:C:308:HIS:CE1	2.71	0.44
2:D:344:ASP:N	6:D:1328:HOH:O	2.49	0.44
2:D:344:ASP:OD1	6:D:1328:HOH:O	2.21	0.44
1:A:132:LYS:HB3	6:A:1481:HOH:O	2.18	0.44
1:B:22:SER:HB3	6:B:1001:HOH:O	2.18	0.44
1:B:122:ARG:O	1:B:124:ASN:ND2	2.51	0.44
2:D:407:ASN:ND2	6:D:1569:HOH:O	2.49	0.44
1:B:64:TYR:HB3	6:B:1642:HOH:O	2.17	0.44
2:D:324:PRO:HB2	2:D:571:PHE:HE2	1.82	0.44
2:D:346:THR:HG22	2:D:348:VAL:HG23	1.99	0.44
1:A:27:LYS:O	1:A:29:ASN:N	2.44	0.44
2:C:470:ARG:HD3	6:D:1329:HOH:O	2.17	0.44
2:D:308:HIS:O	2:D:311:ASP:CB	2.65	0.44
1:B:9:PHE:CZ	1:B:81:LEU:CD2	3.00	0.44
1:B:43:LYS:N	6:B:1626:HOH:O	2.49	0.44
2:C:314:ILE:HD12	2:C:565:ASN:HB3	1.98	0.44
1:A:7:ASP:OD1	1:A:180:LYS:HE3	2.18	0.43
1:B:227:LYS:HG2	1:B:228:LYS:N	2.33	0.43
2:D:312:PHE:CE1	2:D:561:LYS:HG2	2.53	0.43
2:D:349:GLY:HA3	2:D:554:ASN:ND2	2.34	0.43
1:A:108:ASN:OD1	4:A:610:NDP:H6N	2.18	0.43
1:B:138:GLU:C	1:B:140:VAL:N	2.71	0.43
2:D:350:VAL:HG12	2:D:553:TYR:CD1	2.53	0.43
1:B:41:GLY:HA3	4:B:710:NDP:H1D	2.00	0.43
2:D:447:ASN:CG	6:D:1220:HOH:O	2.57	0.43
1:A:109:TRP:CD2	1:A:126:ILE:HD11	2.54	0.43
1:B:196:PHE:HB2	6:B:1620:HOH:O	2.18	0.43
2:C:344:ASP:CG	2:C:345:ARG:N	2.72	0.43
2:C:423:VAL:O	2:C:424:ASN:HB2	2.19	0.43
1:B:28:LYS:HA	6:B:1703:HOH:O	2.19	0.42
1:B:114:LYS:HD2	1:B:114:LYS:N	2.08	0.42
2:C:325:GLU:HG3	2:C:369:LEU:HD22	2.00	0.42
2:C:449:GLU:HG3	2:C:449:GLU:O	2.20	0.42

Continued on next page...

Continued from previous page...

Atom-1	Atom-2	Interatomic distance (Å)	Clash overlap (Å)
1:A:23:LYS:HE2	1:A:23:LYS:HB3	1.53	0.42
1:A:144:ASN:ND2	1:A:145:LYS:HG2	2.34	0.42
1:A:210:VAL:HG12	2:C:323:HIS:HB2	2.00	0.42
1:A:40:LEU:HD22	4:A:610:NDP:C3N	2.50	0.42
1:B:102:VAL:HG23	1:B:102:VAL:O	2.20	0.42
2:C:506:ILE:HG13	2:D:354:PHE:CE2	2.54	0.42
2:D:341:LYS:HE2	6:D:1316:HOH:O	2.18	0.42
2:D:457:LYS:NZ	6:D:1228:HOH:O	2.53	0.42
1:B:178:LEU:CD2	6:B:1639:HOH:O	2.60	0.42
2:C:289:ASP:HA	2:C:292:TYR:CD2	2.54	0.42
1:A:172:GLU:O	1:A:176:LYS:HG3	2.19	0.42
2:D:421:ARG:HH11	2:D:421:ARG:HG2	1.84	0.42
2:D:567:ILE:HA	2:D:568:PRO:HD3	1.90	0.42
1:B:209:SER:HB3	2:C:293:PHE:CE2	2.55	0.42
2:C:297:LYS:HB3	2:C:298:GLU:O	2.20	0.42
1:B:171:GLN:OE1	1:B:198:PRO:HB3	2.19	0.42
1:B:209:SER:HB3	2:C:293:PHE:HE2	1.85	0.42
1:A:19:LYS:HG2	1:A:36:THR:HG22	2.00	0.42
2:D:341:LYS:HG3	6:D:1316:HOH:O	2.19	0.42
1:B:8:VAL:HG11	1:B:80:TYR:CD2	2.55	0.41
2:D:589:SER:HB3	6:D:1270:HOH:O	2.20	0.41
1:B:16:ALA:HB2	3:B:709:CP6:N14	2.34	0.41
2:C:479:VAL:HB	2:D:437:PHE:CD1	2.54	0.41
1:A:16:ALA:HA	1:A:185:THR:HB	2.01	0.41
2:C:421:ARG:HH11	2:C:421:ARG:HG2	1.85	0.41
2:D:312:PHE:HB2	6:D:1684:HOH:O	2.21	0.41
1:A:23:LYS:O	1:A:24:ASN:C	2.58	0.41
1:A:171:GLN:OE1	1:A:171:GLN:HA	2.21	0.41
1:B:126:ILE:O	1:B:143:ILE:HG12	2.21	0.41
1:B:141:TYR:CE2	1:B:156:LEU:HD11	2.55	0.41
1:A:33:ASN:HA	2:C:569:TYR:OH	2.21	0.41
1:B:33:ASN:OD1	1:B:35:TYR:N	2.53	0.41
1:B:37:PHE:O	1:B:184:PHE:HZ	2.04	0.41
2:C:301:GLU:OE1	2:C:337:MET:HE2	2.21	0.41
2:C:343:SER:HA	2:C:349:GLY:HA2	2.03	0.40
1:A:27:LYS:C	1:A:29:ASN:N	2.73	0.40
1:B:145:LYS:HG2	1:B:146:VAL:N	2.35	0.40
2:D:325:GLU:HG3	2:D:369:LEU:HD22	2.03	0.40
1:B:113:PRO:HB2	1:B:116:PHE:CD2	2.56	0.40
2:D:346:THR:CB	2:D:348:VAL:HG23	2.51	0.40
2:D:284:ASP:O	2:D:287:GLU:HB3	2.22	0.40

Continued on next page...

Continued from previous page...

Atom-1	Atom-2	Interatomic distance (Å)	Clash overlap (Å)
1:B:113:PRO:HB2	1:B:116:PHE:HD2	1.87	0.40
2:C:492:ILE:HD11	2:C:510:ARG:HD3	2.03	0.40
2:D:299:LYS:HA	2:D:299:LYS:HD3	1.21	0.40

There are no symmetry-related clashes.

5.3 Torsion angles [i](#)

5.3.1 Protein backbone [i](#)

In the following table, the Percentiles column shows the percent Ramachandran outliers of the chain as a percentile score with respect to all X-ray entries followed by that with respect to entries of similar resolution.

The Analysed column shows the number of residues for which the backbone conformation was analysed, and the total number of residues.

Mol	Chain	Analysed	Favoured	Allowed	Outliers	Percentiles	
1	A	217/280 (78%)	208 (96%)	8 (4%)	1 (0%)	29	35
1	B	212/280 (76%)	193 (91%)	16 (8%)	3 (1%)	11	11
2	C	324/328 (99%)	303 (94%)	20 (6%)	1 (0%)	41	50
2	D	324/328 (99%)	309 (95%)	13 (4%)	2 (1%)	25	31
All	All	1077/1216 (89%)	1013 (94%)	57 (5%)	7 (1%)	25	31

All (7) Ramachandran outliers are listed below:

Mol	Chain	Res	Type
1	B	5	VAL
2	C	308	HIS
2	D	430	TYR
1	A	49	LYS
2	D	308	HIS
1	B	113	PRO
1	B	146	VAL

5.3.2 Protein sidechains [i](#)

In the following table, the Percentiles column shows the percent sidechain outliers of the chain as a percentile score with respect to all X-ray entries followed by that with respect to entries of similar

resolution.

The Analysed column shows the number of residues for which the sidechain conformation was analysed, and the total number of residues.

Mol	Chain	Analysed	Rotameric	Outliers	Percentiles	
1	A	210/268 (78%)	200 (95%)	10 (5%)	25	36
1	B	205/268 (76%)	195 (95%)	10 (5%)	25	35
2	C	300/302 (99%)	294 (98%)	6 (2%)	55	72
2	D	300/302 (99%)	294 (98%)	6 (2%)	55	72
All	All	1015/1140 (89%)	983 (97%)	32 (3%)	39	54

All (32) residues with a non-rotameric sidechain are listed below:

Mol	Chain	Res	Type
1	A	1	MET
1	A	23	LYS
1	A	27	LYS
1	A	28	LYS
1	A	49	LYS
1	A	50	CYS
1	A	83	LYS
1	A	124	ASN
1	A	144	ASN
1	A	145	LYS
1	B	7	ASP
1	B	50	CYS
1	B	114	LYS
1	B	121	ASN
1	B	124	ASN
1	B	127	LEU
1	B	132	LYS
1	B	141	TYR
1	B	189	SER
1	B	231	ASN
2	C	284	ASP
2	C	287	GLU
2	C	302	LYS
2	C	345	ARG
2	C	487	LEU
2	C	524	SER
2	D	285	GLU
2	D	299	LYS

Continued on next page...

Continued from previous page...

Mol	Chain	Res	Type
2	D	305	ASN
2	D	309	PRO
2	D	487	LEU
2	D	564	LEU

Sometimes sidechains can be flipped to improve hydrogen bonding and reduce clashes. All (11) such sidechains are listed below:

Mol	Chain	Res	Type
1	A	99	GLN
1	A	144	ASN
1	B	99	GLN
1	B	121	ASN
1	B	171	GLN
2	C	316	ASN
2	C	394	ASN
2	C	424	ASN
2	D	394	ASN
2	D	424	ASN
2	D	554	ASN

5.3.3 RNA [i](#)

There are no RNA molecules in this entry.

5.4 Non-standard residues in protein, DNA, RNA chains [i](#)

There are no non-standard protein/DNA/RNA residues in this entry.

5.5 Carbohydrates [i](#)

There are no monosaccharides in this entry.

5.6 Ligand geometry [i](#)

6 ligands are modelled in this entry.

In the following table, the Counts columns list the number of bonds (or angles) for which Mogul statistics could be retrieved, the number of bonds (or angles) that are observed in the model and the number of bonds (or angles) that are defined in the Chemical Component Dictionary. The

Link column lists molecule types, if any, to which the group is linked. The Z score for a bond length (or angle) is the number of standard deviations the observed value is removed from the expected value. A bond length (or angle) with $|Z| > 2$ is considered an outlier worth inspection. RMSZ is the root-mean-square of all Z scores of the bond lengths (or angles).

Mol	Type	Chain	Res	Link	Bond lengths			Bond angles		
					Counts	RMSZ	# Z > 2	Counts	RMSZ	# Z > 2
5	UMP	C	611	-	18,21,21	2.21	5 (27%)	21,31,31	1.87	6 (28%)
3	CP6	B	709	-	18,18,18	2.65	10 (55%)	25,25,25	2.25	12 (48%)
5	UMP	D	711	-	18,21,21	2.36	6 (33%)	21,31,31	1.95	6 (28%)
4	NDP	A	610	-	45,52,52	3.01	19 (42%)	53,80,80	2.31	22 (41%)
4	NDP	B	710	-	45,52,52	2.26	14 (31%)	53,80,80	1.63	12 (22%)
3	CP6	A	609	-	18,18,18	2.57	11 (61%)	25,25,25	2.18	9 (36%)

In the following table, the Chirals column lists the number of chiral outliers, the number of chiral centers analysed, the number of these observed in the model and the number defined in the Chemical Component Dictionary. Similar counts are reported in the Torsion and Rings columns. '-' means no outliers of that kind were identified.

Mol	Type	Chain	Res	Link	Chirals	Torsions	Rings
5	UMP	C	611	-	-	1/7/22/22	0/2/2/2
3	CP6	B	709	-	-	2/6/6/6	0/2/2/2
5	UMP	D	711	-	-	2/7/22/22	0/2/2/2
4	NDP	A	610	-	-	3/30/77/77	0/5/5/5
4	NDP	B	710	-	-	9/30/77/77	0/5/5/5
3	CP6	A	609	-	-	1/6/6/6	0/2/2/2

All (65) bond length outliers are listed below:

Mol	Chain	Res	Type	Atoms	Z	Observed(Å)	Ideal(Å)
4	A	610	NDP	O4B-C1B	9.29	1.54	1.41
5	D	711	UMP	C4-N3	6.45	1.44	1.33
4	A	610	NDP	C2N-C3N	6.13	1.52	1.34
4	A	610	NDP	C6N-C5N	5.95	1.44	1.33
4	B	710	NDP	C2N-C3N	5.93	1.51	1.34
5	C	611	UMP	C4-N3	5.92	1.43	1.33
4	A	610	NDP	C4A-N3A	5.47	1.43	1.35
4	A	610	NDP	O4B-C4B	5.16	1.56	1.45
3	B	709	CP6	C4-C5	5.12	1.52	1.40
4	A	610	NDP	O4D-C1D	4.87	1.53	1.42
4	B	710	NDP	C4A-N3A	4.78	1.42	1.35
4	B	710	NDP	C5D-C4D	4.65	1.66	1.51

Continued on next page...

Continued from previous page...

Mol	Chain	Res	Type	Atoms	Z	Observed(Å)	Ideal(Å)
4	A	610	NDP	C2A-N3A	4.53	1.39	1.32
4	B	710	NDP	C6N-C5N	4.50	1.41	1.33
5	C	611	UMP	O4'-C1'	4.49	1.52	1.42
5	D	711	UMP	O4'-C1'	4.42	1.52	1.42
3	A	609	CP6	C4-C5	4.32	1.50	1.40
4	A	610	NDP	C4N-C5N	-4.30	1.37	1.48
3	B	709	CP6	C9-C10	4.27	1.46	1.38
4	B	710	NDP	C4N-C5N	-4.09	1.38	1.48
4	A	610	NDP	C2A-N1A	3.83	1.41	1.33
4	A	610	NDP	C2D-C3D	-3.80	1.42	1.53
3	A	609	CP6	C9-C10	3.80	1.45	1.38
4	A	610	NDP	P2B-O2B	-3.70	1.52	1.59
3	A	609	CP6	C10-CL1	-3.61	1.66	1.74
3	B	709	CP6	C2-N14	3.59	1.41	1.33
3	A	609	CP6	C12-C7	3.55	1.46	1.39
3	B	709	CP6	C10-CL1	-3.46	1.67	1.74
3	A	609	CP6	C2-N14	3.40	1.40	1.33
4	B	710	NDP	C2A-N3A	3.37	1.37	1.32
4	B	710	NDP	C2A-N1A	3.27	1.40	1.33
3	B	709	CP6	C12-C7	3.26	1.46	1.39
4	A	610	NDP	P2B-O2X	-3.20	1.42	1.54
4	B	710	NDP	O4D-C1D	3.19	1.49	1.42
3	B	709	CP6	C3-N1	3.18	1.39	1.35
3	B	709	CP6	C4-C3	3.16	1.50	1.43
4	B	710	NDP	PA-O1A	-3.15	1.39	1.50
4	B	710	NDP	C6N-N1N	3.04	1.44	1.37
4	A	610	NDP	C5D-C4D	2.91	1.60	1.51
3	A	609	CP6	C4-C3	2.86	1.49	1.43
4	B	710	NDP	O4B-C1B	2.83	1.45	1.41
3	A	609	CP6	C2-N6	2.80	1.40	1.35
3	A	609	CP6	C4-C7	-2.79	1.45	1.50
4	B	710	NDP	C4N-C3N	-2.76	1.44	1.49
4	A	610	NDP	C6N-N1N	2.71	1.44	1.37
3	B	709	CP6	C2-N6	2.70	1.40	1.35
3	A	609	CP6	C2-N1	2.59	1.40	1.35
5	C	611	UMP	P-OP3	-2.59	1.44	1.54
4	A	610	NDP	PA-O5B	2.54	1.69	1.59
5	D	711	UMP	C2-N3	2.47	1.43	1.38
3	A	609	CP6	C12-C11	2.46	1.43	1.38
4	A	610	NDP	PA-O1A	-2.44	1.42	1.50
5	C	611	UMP	P-OP2	-2.38	1.45	1.54
4	A	610	NDP	C1D-N1N	2.35	1.53	1.46

Continued on next page...

Continued from previous page...

Mol	Chain	Res	Type	Atoms	Z	Observed(Å)	Ideal(Å)
4	B	710	NDP	C2D-C1D	2.32	1.60	1.53
3	A	609	CP6	C3-N1	2.27	1.38	1.35
4	A	610	NDP	C3B-C4B	2.27	1.58	1.53
4	A	610	NDP	C8A-N7A	-2.27	1.30	1.34
3	B	709	CP6	C12-C11	2.23	1.42	1.38
5	D	711	UMP	O4'-C4'	2.21	1.49	1.45
5	D	711	UMP	P-OP3	-2.21	1.46	1.54
5	D	711	UMP	O3'-C3'	2.19	1.48	1.43
5	C	611	UMP	C2-N3	2.16	1.42	1.38
4	B	710	NDP	C1D-N1N	2.10	1.52	1.46
3	B	709	CP6	C2-N1	2.05	1.39	1.35

All (67) bond angle outliers are listed below:

Mol	Chain	Res	Type	Atoms	Z	Observed(°)	Ideal(°)
4	A	610	NDP	PN-O3-PA	6.82	156.21	132.83
3	A	609	CP6	C15-C5-C4	-6.59	117.99	122.57
4	A	610	NDP	O4B-C4B-C5B	-6.20	88.96	109.37
3	B	709	CP6	C15-C5-C4	-5.83	118.52	122.57
4	B	710	NDP	C3N-C2N-N1N	-4.54	116.62	123.10
4	A	610	NDP	C3N-C2N-N1N	-4.47	116.72	123.10
4	A	610	NDP	O4D-C1D-N1N	4.00	115.88	108.06
4	A	610	NDP	O2X-P2B-O1X	3.88	125.88	110.68
4	B	710	NDP	O2X-P2B-O1X	3.86	125.81	110.68
5	D	711	UMP	C2'-C1'-N1	3.78	123.00	114.27
5	C	611	UMP	C2'-C1'-N1	3.77	122.97	114.27
5	D	711	UMP	C5-C4-N3	-3.63	115.32	123.31
5	C	611	UMP	C5-C4-N3	-3.60	115.40	123.31
3	B	709	CP6	C2-N6-C5	3.55	119.20	116.24
4	B	710	NDP	O3X-P2B-O1X	-3.54	96.84	110.68
4	A	610	NDP	C1D-N1N-C2N	-3.53	115.23	121.11
5	D	711	UMP	O4'-C1'-C2'	-3.50	99.64	106.25
5	C	611	UMP	O4'-C1'-C2'	-3.44	99.75	106.25
4	A	610	NDP	C5B-C4B-C3B	3.30	127.54	115.18
4	A	610	NDP	C2D-C1D-N1N	-3.28	105.09	113.30
3	A	609	CP6	C11-C10-CL1	3.20	124.36	119.35
4	A	610	NDP	O5D-C5D-C4D	-3.14	98.19	108.99
4	B	710	NDP	PN-O3-PA	3.11	143.49	132.83
5	D	711	UMP	C4'-O4'-C1'	3.10	116.93	109.45
4	B	710	NDP	C1D-N1N-C2N	-3.08	115.99	121.11
3	A	609	CP6	C4-C3-N1	-3.06	120.80	122.52
5	D	711	UMP	O4'-C4'-C3'	-3.04	98.57	105.67

Continued on next page...

Continued from previous page...

Mol	Chain	Res	Type	Atoms	Z	Observed(°)	Ideal(°)
3	B	709	CP6	N13-C3-N1	2.97	121.23	117.03
3	B	709	CP6	C4-C3-N1	-2.97	120.85	122.52
4	B	710	NDP	O2X-P2B-O2B	2.92	119.09	105.99
4	A	610	NDP	O5B-C5B-C4B	-2.86	99.14	108.99
4	B	710	NDP	O3X-P2B-O2X	-2.83	96.80	107.64
3	B	709	CP6	C11-C10-CL1	2.79	123.71	119.35
4	A	610	NDP	O2X-P2B-O2B	2.78	118.45	105.99
3	A	609	CP6	N13-C3-N1	2.77	120.95	117.03
3	B	709	CP6	C7-C4-C3	2.75	124.41	120.42
4	A	610	NDP	O3X-P2B-O2X	-2.74	97.16	107.64
4	A	610	NDP	O4B-C4B-C3B	-2.72	99.73	105.11
3	B	709	CP6	C3-C4-C5	-2.68	113.70	115.91
5	C	611	UMP	O4'-C4'-C3'	-2.63	99.53	105.67
3	B	709	CP6	C7-C4-C5	-2.59	121.36	123.46
5	C	611	UMP	C4'-O4'-C1'	2.57	115.66	109.45
4	B	710	NDP	O7N-C7N-N7N	-2.56	116.88	122.88
3	A	609	CP6	C9-C10-CL1	-2.52	115.42	119.35
4	A	610	NDP	O4B-C1B-C2B	-2.48	102.28	106.59
3	A	609	CP6	C7-C4-C5	-2.46	121.47	123.46
3	B	709	CP6	C4-C3-N13	-2.40	117.50	120.86
4	A	610	NDP	C2D-C3D-C4D	2.38	107.27	102.64
4	A	610	NDP	O3D-C3D-C4D	-2.36	104.22	111.05
3	A	609	CP6	C7-C4-C3	2.35	123.83	120.42
4	A	610	NDP	O2B-C2B-C3B	2.32	120.09	111.68
4	A	610	NDP	O3X-P2B-O1X	-2.32	101.61	110.68
3	A	609	CP6	C2-N6-C5	2.31	118.16	116.24
3	B	709	CP6	C12-C7-C4	2.28	124.59	120.79
3	B	709	CP6	C2-N1-C3	2.28	119.51	116.99
3	B	709	CP6	C9-C10-CL1	-2.24	115.85	119.35
4	A	610	NDP	O2A-PA-O1A	2.20	123.13	112.24
3	A	609	CP6	C2-N1-C3	2.17	119.39	116.99
4	B	710	NDP	C2D-C3D-C4D	2.14	106.79	102.64
4	B	710	NDP	N3A-C2A-N1A	-2.13	125.34	128.68
5	D	711	UMP	C2'-C3'-C4'	2.12	107.18	102.76
4	B	710	NDP	O3X-P2B-O2B	-2.09	96.63	105.99
4	A	610	NDP	O5B-PA-O1A	-2.08	100.95	109.07
4	A	610	NDP	O7N-C7N-N7N	-2.06	118.07	122.88
4	A	610	NDP	C5D-C4D-C3D	2.01	122.73	115.18
5	C	611	UMP	C2'-C3'-C4'	2.01	106.95	102.76
4	B	710	NDP	O2B-C2B-C3B	2.01	118.95	111.68

There are no chirality outliers.

All (18) torsion outliers are listed below:

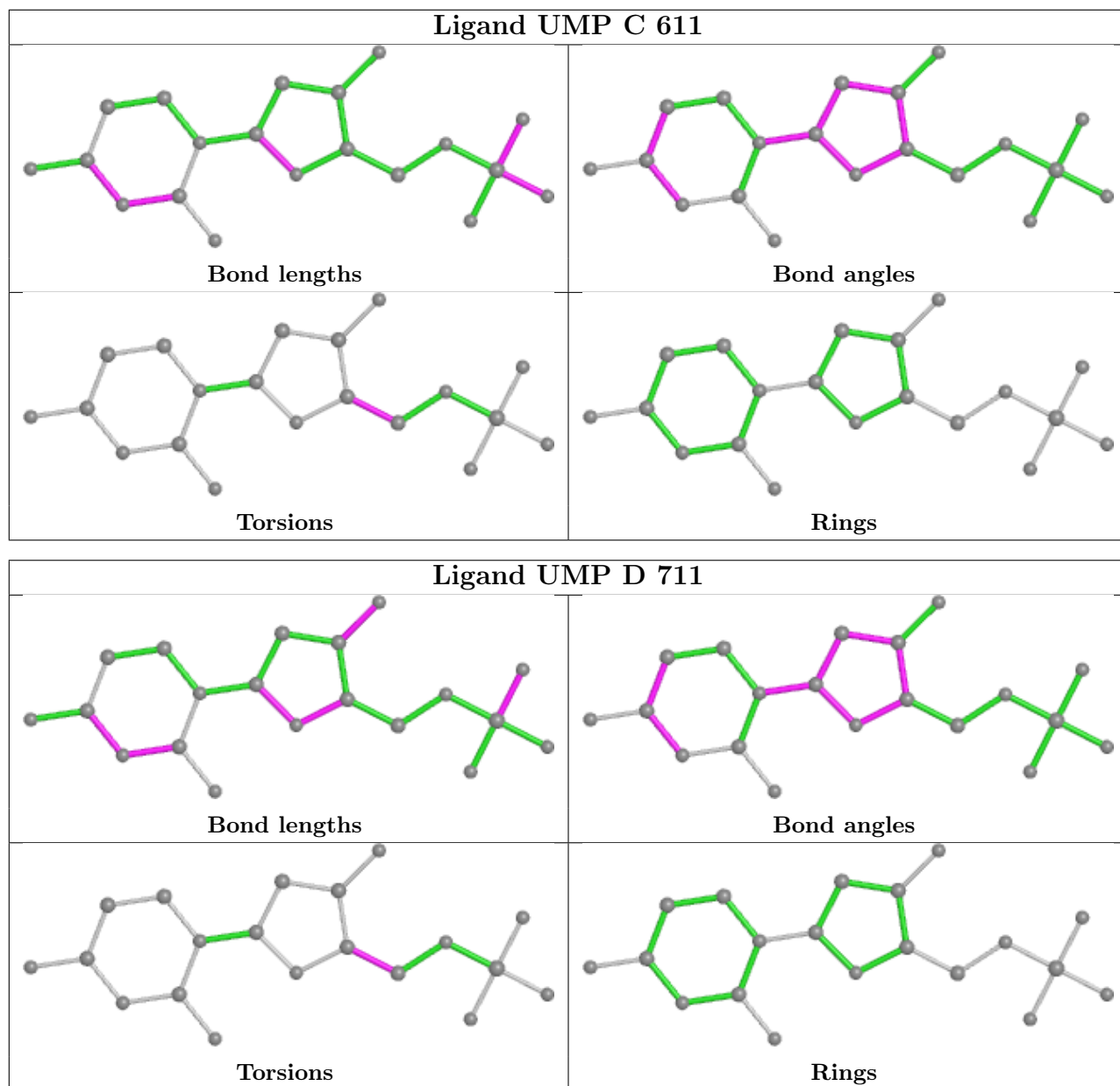
Mol	Chain	Res	Type	Atoms
4	A	610	NDP	C5D-O5D-PN-O1N
4	B	710	NDP	C5D-O5D-PN-O1N
4	A	610	NDP	O4D-C1D-N1N-C2N
5	D	711	UMP	C3'-C4'-C5'-O5'
4	B	710	NDP	PA-O3-PN-O5D
4	B	710	NDP	C5B-O5B-PA-O3
4	B	710	NDP	O4D-C1D-N1N-C2N
4	B	710	NDP	C3B-C4B-C5B-O5B
3	B	709	CP6	C16-C15-C5-C4
5	D	711	UMP	O4'-C4'-C5'-O5'
4	B	710	NDP	O4B-C4B-C5B-O5B
3	A	609	CP6	C16-C15-C5-N6
4	B	710	NDP	C5D-O5D-PN-O3
5	C	611	UMP	O4'-C4'-C5'-O5'
4	A	610	NDP	C2N-C3N-C7N-N7N
4	B	710	NDP	C2N-C3N-C7N-N7N
4	B	710	NDP	C3B-C2B-O2B-P2B
3	B	709	CP6	C16-C15-C5-N6

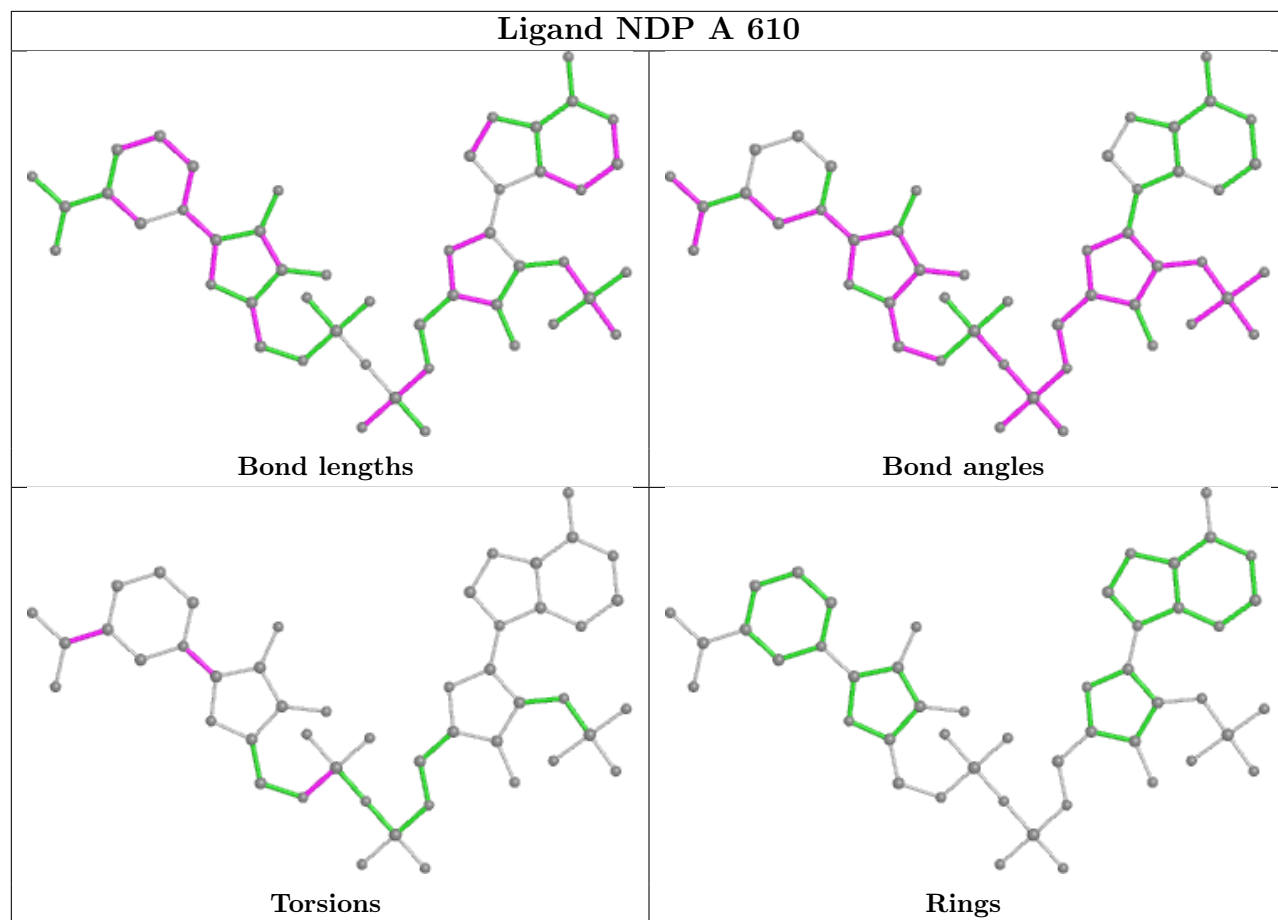
There are no ring outliers.

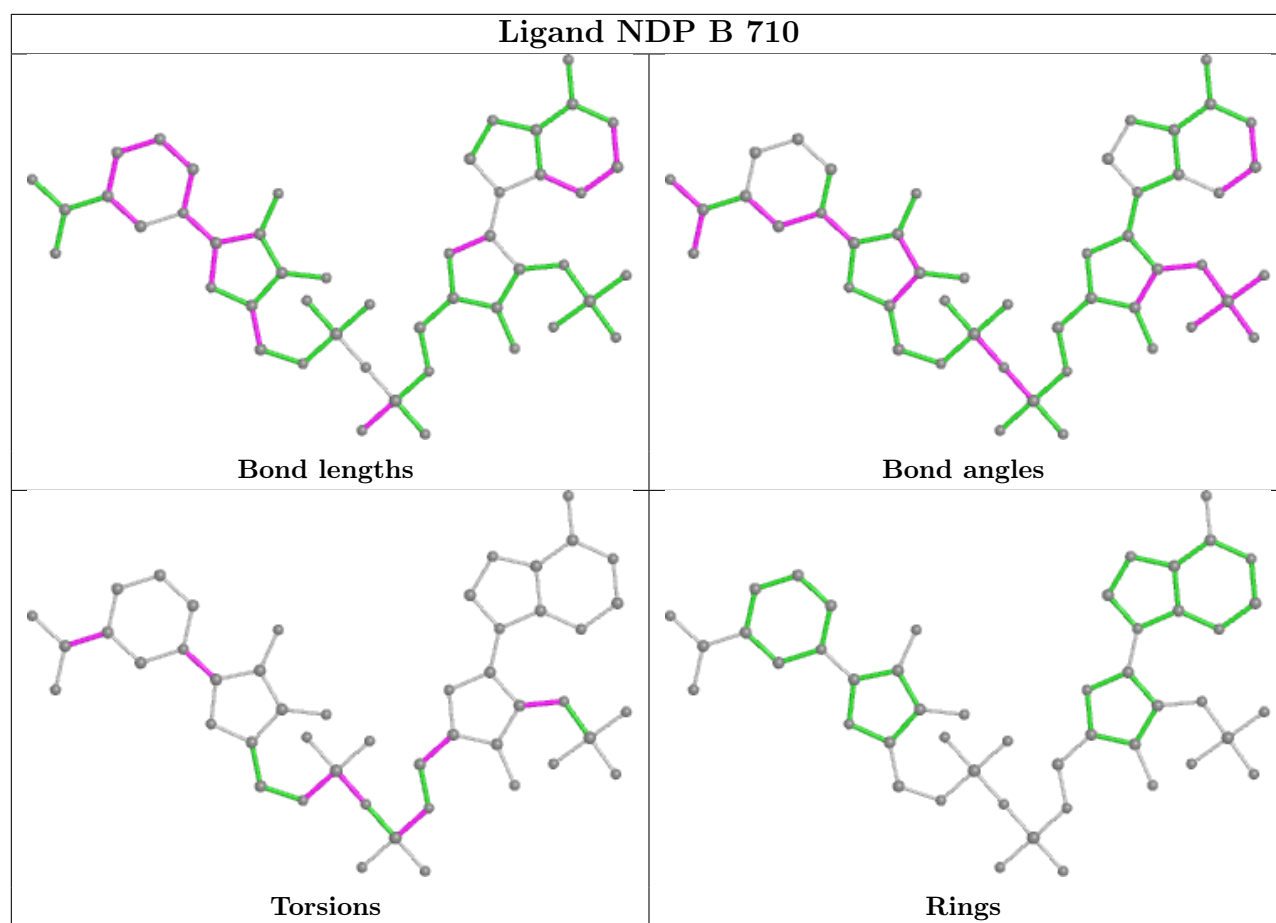
3 monomers are involved in 28 short contacts:

Mol	Chain	Res	Type	Clashes	Symm-Clashes
3	B	709	CP6	2	0
4	A	610	NDP	14	0
4	B	710	NDP	12	0

The following is a two-dimensional graphical depiction of Mogul quality analysis of bond lengths, bond angles, torsion angles, and ring geometry for all instances of the Ligand of Interest. In addition, ligands with molecular weight > 250 and outliers as shown on the validation Tables will also be included. For torsion angles, if less than 5% of the Mogul distribution of torsion angles is within 10 degrees of the torsion angle in question, then that torsion angle is considered an outlier. Any bond that is central to one or more torsion angles identified as an outlier by Mogul will be highlighted in the graph. For rings, the root-mean-square deviation (RMSD) between the ring in question and similar rings identified by Mogul is calculated over all ring torsion angles. If the average RMSD is greater than 60 degrees and the minimal RMSD between the ring in question and any Mogul-identified rings is also greater than 60 degrees, then that ring is considered an outlier. The outliers are highlighted in purple. The color gray indicates Mogul did not find sufficient equivalents in the CSD to analyse the geometry.







5.7 Other polymers [\(i\)](#)

There are no such residues in this entry.

5.8 Polymer linkage issues [\(i\)](#)

There are no chain breaks in this entry.

6 Fit of model and data

6.1 Protein, DNA and RNA chains

In the following table, the column labelled ‘#RSRZ > 2’ contains the number (and percentage) of RSRZ outliers, followed by percent RSRZ outliers for the chain as percentile scores relative to all X-ray entries and entries of similar resolution. The OWAB column contains the minimum, median, 95th percentile and maximum values of the occupancy-weighted average B-factor per residue. The column labelled ‘Q < 0.9’ lists the number of (and percentage) of residues with an average occupancy less than 0.9.

Mol	Chain	Analysed	<RSRZ>	#RSRZ>2	OWAB(Å ²)	Q<0.9
1	A	221/280 (78%)	0.76	29 (13%) 3 4	16, 34, 86, 94	0
1	B	216/280 (77%)	2.26	91 (42%) 0 0	23, 73, 94, 94	0
2	C	326/328 (99%)	0.09	25 (7%) 13 17	14, 23, 77, 94	0
2	D	326/328 (99%)	-0.01	22 (6%) 17 23	14, 22, 71, 94	0
All	All	1089/1216 (89%)	0.63	167 (15%) 2 3	14, 28, 93, 94	0

All (167) RSRZ outliers are listed below:

Mol	Chain	Res	Type	RSRZ
1	A	85	THR	13.3
1	A	1	MET	12.7
1	B	75	TYR	11.7
1	B	26	GLY	11.5
1	B	2	MET	11.4
1	A	24	ASN	10.8
1	B	1	MET	10.0
1	B	80	TYR	9.4
1	A	2	MET	8.9
1	A	25	GLU	8.6
1	A	26	GLY	8.2
2	D	608	ALA	8.1
1	B	70	TYR	7.7
1	B	24	ASN	7.7
1	A	230	ASN	7.6
1	B	230	ASN	7.6
1	B	28	LYS	7.4
1	B	27	LYS	7.4
1	B	135	ASP	6.8
1	B	9	PHE	6.8
1	B	3	GLU	6.7

Continued on next page...

Continued from previous page...

Mol	Chain	Res	Type	RSRZ
2	C	298	GLU	6.6
2	C	299	LYS	6.5
1	B	151	VAL	6.4
2	D	283	ASP	6.4
1	A	22	SER	6.3
2	D	299	LYS	6.0
1	B	139	ASP	5.9
2	C	283	ASP	5.9
1	B	136	PHE	5.9
1	B	81	LEU	5.9
1	B	73	LEU	5.9
1	B	130	THR	5.9
1	B	137	ASP	5.9
1	B	131	LEU	5.8
2	C	344	ASP	5.8
2	C	284	ASP	5.7
1	B	134	GLU	5.6
1	B	74	LYS	5.5
1	B	116	PHE	5.5
1	B	144	ASN	5.5
2	C	346	THR	5.5
1	B	23	LYS	5.4
1	B	25	GLU	5.4
1	A	27	LYS	5.4
2	D	345	ARG	5.4
1	B	10	ASP	5.4
1	B	6	CYS	5.4
2	C	304	LYS	5.3
1	A	231	ASN	5.2
1	B	138	GLU	5.2
1	B	77	ARG	5.2
1	A	23	LYS	5.2
1	A	82	ASN	5.1
1	B	231	ASN	5.0
1	B	115	LYS	5.0
2	C	307	ILE	4.9
2	C	345	ARG	4.9
1	B	22	SER	4.9
1	A	29	ASN	4.9
2	C	347	GLY	4.9
2	D	305	ASN	4.8
1	B	76	LYS	4.6

Continued on next page...

Continued from previous page...

Mol	Chain	Res	Type	RSRZ
1	A	3	GLU	4.5
1	B	78	CYS	4.5
1	A	84	GLU	4.5
2	C	301	GLU	4.5
1	B	29	ASN	4.4
2	C	286	GLU	4.3
1	B	4	GLN	4.2
2	C	285	GLU	4.2
2	C	287	GLU	4.1
1	A	96	LYS	4.1
2	D	346	THR	4.1
1	B	129	ARG	4.0
2	D	284	ASP	4.0
1	A	28	LYS	4.0
1	B	79	LYS	4.0
2	C	300	GLU	3.8
2	D	310	ASN	3.8
1	B	12	TYR	3.7
1	B	66	ASN	3.6
1	B	14	ILE	3.6
1	B	141	TYR	3.6
2	D	300	GLU	3.6
1	B	155	LYS	3.5
1	B	97	LYS	3.5
1	B	11	ILE	3.5
1	B	140	VAL	3.5
1	B	154	GLY	3.5
1	A	71	GLU	3.5
1	B	176	LYS	3.4
2	D	285	GLU	3.4
1	B	5	VAL	3.4
1	A	75	TYR	3.4
2	C	348	VAL	3.3
2	C	310	ASN	3.3
2	D	307	ILE	3.3
1	A	79	LYS	3.3
1	B	132	LYS	3.3
1	B	157	ASN	3.3
2	D	298	GLU	3.2
1	B	72	LYS	3.2
1	A	78	CYS	3.2
2	C	305	ASN	3.2

Continued on next page...

Continued from previous page...

Mol	Chain	Res	Type	RSRZ
1	B	114	LYS	3.2
1	B	133	LYS	3.1
1	B	161	CYS	3.0
1	B	203	ASN	3.0
1	B	159	TYR	3.0
1	B	113	PRO	3.0
1	B	162	PHE	2.9
1	B	35	TYR	2.9
2	C	607	ALA	2.9
2	D	309	PRO	2.9
1	B	179	ILE	2.8
2	C	290	PHE	2.8
2	C	297	LYS	2.8
1	B	156	LEU	2.8
1	A	116	PHE	2.8
1	B	8	VAL	2.8
1	A	201	ASN	2.7
1	B	229	THR	2.7
2	C	608	ALA	2.7
2	D	286	GLU	2.7
2	D	344	ASP	2.6
1	B	228	LYS	2.6
1	B	158	TYR	2.6
1	A	203	ASN	2.6
1	B	205	TYR	2.6
1	B	185	THR	2.6
1	B	160	LYS	2.6
1	B	148	ASP	2.6
1	B	98	LEU	2.5
2	C	291	VAL	2.5
1	B	164	ILE	2.5
1	B	175	GLU	2.5
1	B	145	LYS	2.5
1	B	149	LEU	2.5
1	B	69	LYS	2.4
1	B	201	ASN	2.4
1	B	16	ALA	2.4
1	B	152	LEU	2.4
1	A	83	LYS	2.4
2	D	313	GLN	2.4
1	B	183	TYR	2.4
2	D	605	ASP	2.4

Continued on next page...

Continued from previous page...

Mol	Chain	Res	Type	RSRZ
1	B	204	GLU	2.3
1	B	103	VAL	2.3
1	B	68	SER	2.3
1	A	74	LYS	2.3
1	B	163	ILE	2.3
2	D	447	ASN	2.3
1	B	117	LYS	2.3
1	B	147	GLU	2.2
1	B	172	GLU	2.2
1	A	70	TYR	2.2
2	D	306	SER	2.2
2	C	450	ASN	2.1
2	D	301	GLU	2.1
1	A	49	LYS	2.1
2	D	304	LYS	2.1
1	B	202	GLU	2.1
2	D	607	ALA	2.0
1	A	130	THR	2.0
1	B	7	ASP	2.0
2	C	605	ASP	2.0

6.2 Non-standard residues in protein, DNA, RNA chains [i](#)

There are no non-standard protein/DNA/RNA residues in this entry.

6.3 Carbohydrates [i](#)

There are no monosaccharides in this entry.

6.4 Ligands [i](#)

In the following table, the Atoms column lists the number of modelled atoms in the group and the number defined in the chemical component dictionary. The B-factors column lists the minimum, median, 95th percentile and maximum values of B factors of atoms in the group. The column labelled 'Q< 0.9' lists the number of atoms with occupancy less than 0.9.

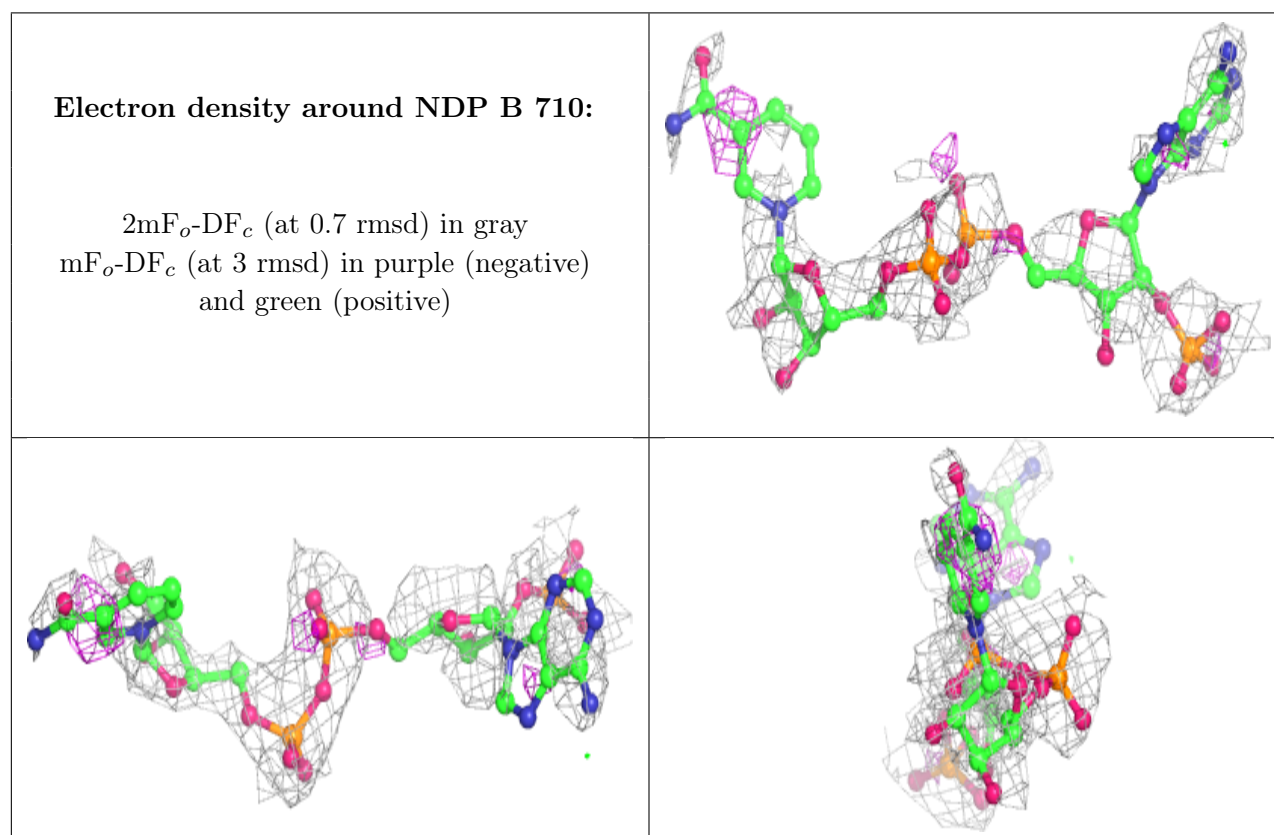
Mol	Type	Chain	Res	Atoms	RSCC	RSR	B-factors(Å ²)	Q<0.9
4	NDP	B	710	48/48	0.72	0.35	93,93,93,93	0
3	CP6	B	709	17/17	0.75	0.23	44,49,50,52	0
3	CP6	A	609	17/17	0.85	0.19	5,17,19,20	0

Continued on next page...

Continued from previous page...

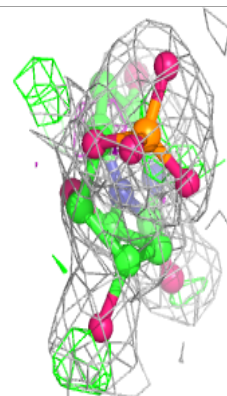
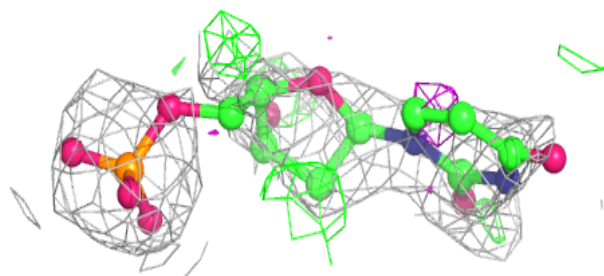
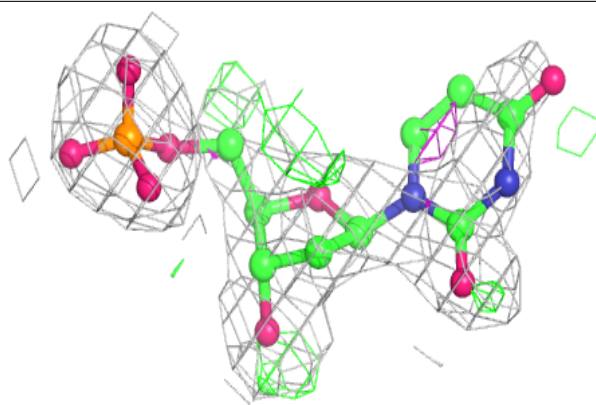
Mol	Type	Chain	Res	Atoms	RSCC	RSR	B-factors(\AA^2)	Q<0.9
5	UMP	D	711	20/20	0.87	0.28	49,65,74,74	0
5	UMP	C	611	20/20	0.90	0.26	42,56,66,67	0
4	NDP	A	610	48/48	0.90	0.21	48,53,68,70	0

The following is a graphical depiction of the model fit to experimental electron density of all instances of the Ligand of Interest. In addition, ligands with molecular weight > 250 and outliers as shown on the geometry validation Tables will also be included. Each fit is shown from different orientation to approximate a three-dimensional view.

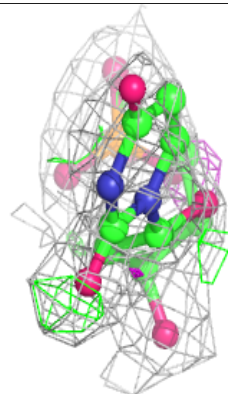
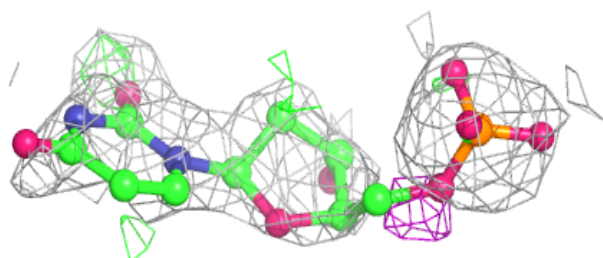
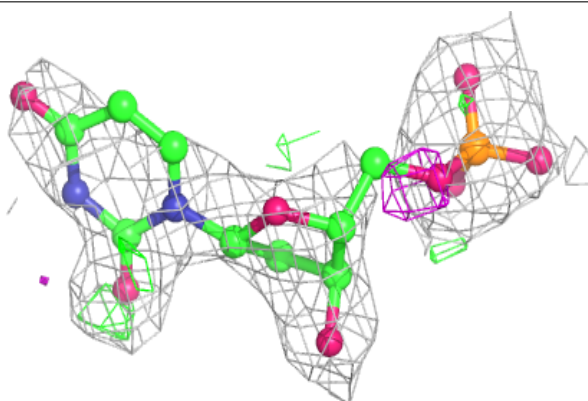


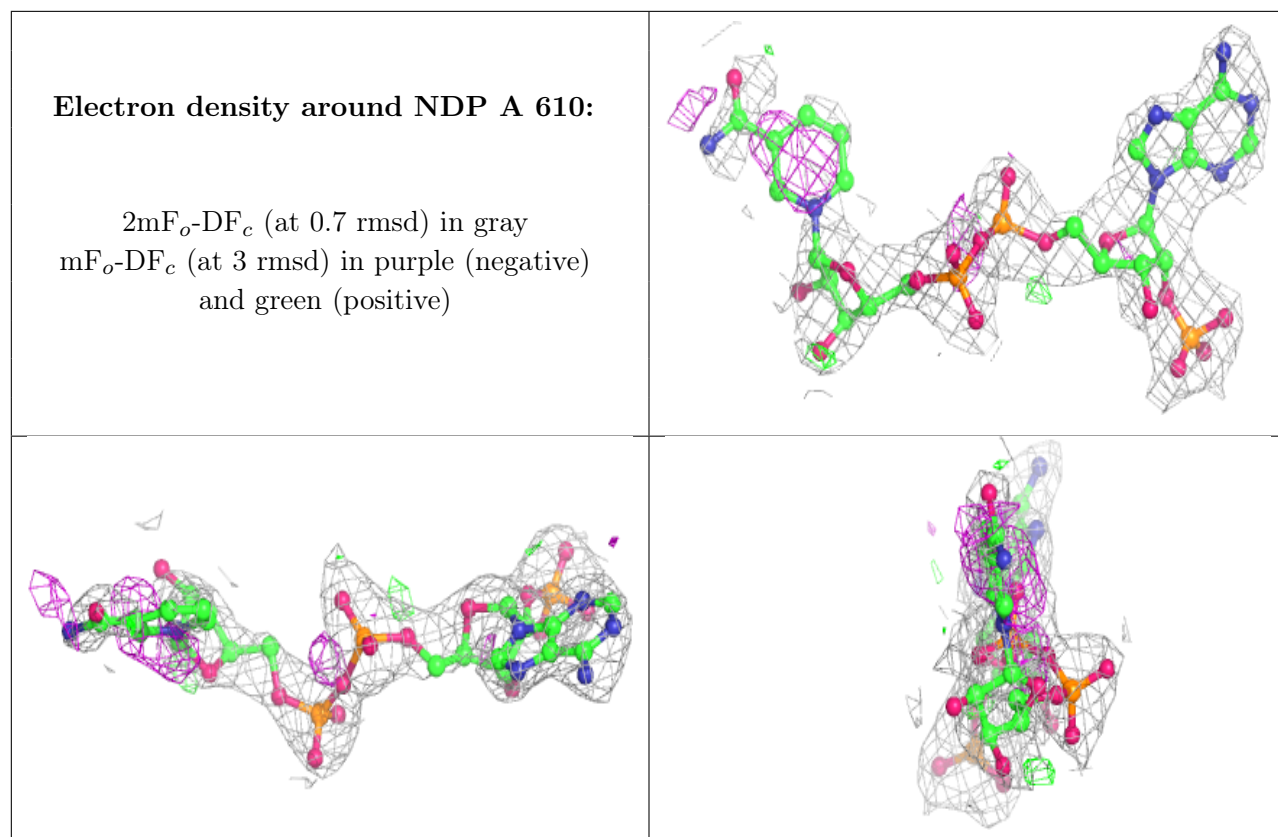
Electron density around UMP D 711:

$2mF_o-DF_c$ (at 0.7 rmsd) in gray
 mF_o-DF_c (at 3 rmsd) in purple (negative)
and green (positive)

**Electron density around UMP C 611:**

$2mF_o-DF_c$ (at 0.7 rmsd) in gray
 mF_o-DF_c (at 3 rmsd) in purple (negative)
and green (positive)





6.5 Other polymers [i](#)

There are no such residues in this entry.