



Full wwPDB X-ray Structure Validation Report ⓘ

May 23, 2020 – 07:49 am BST

PDB ID : 5J31
Title : Crystal structure of 14-3-3zeta in complex with an alkyne cross-linked cyclic peptide derived from ExoS
Authors : Wallraven, K.; Cromm, P.; Bier, D.; Glas, A.; Grossmann, T.
Deposited on : 2016-03-30
Resolution : 2.40 Å(reported)

This is a Full wwPDB X-ray Structure Validation Report for a publicly released PDB entry.

We welcome your comments at validation@mail.wwpdb.org

A user guide is available at

<https://www.wwpdb.org/validation/2017/XrayValidationReportHelp>

with specific help available everywhere you see the ⓘ symbol.

The following versions of software and data (see [references ⓘ](#)) were used in the production of this report:

MolProbity : 4.02b-467
Mogul : 1.8.5 (274361), CSD as541be (2020)
Xtriage (Phenix) : 1.13
EDS : 2.11
Percentile statistics : 20191225.v01 (using entries in the PDB archive December 25th 2019)
Refmac : 5.8.0158
CCP4 : 7.0.044 (Gargrove)
Ideal geometry (proteins) : Engh & Huber (2001)
Ideal geometry (DNA, RNA) : Parkinson et al. (1996)
Validation Pipeline (wwPDB-VP) : 2.11

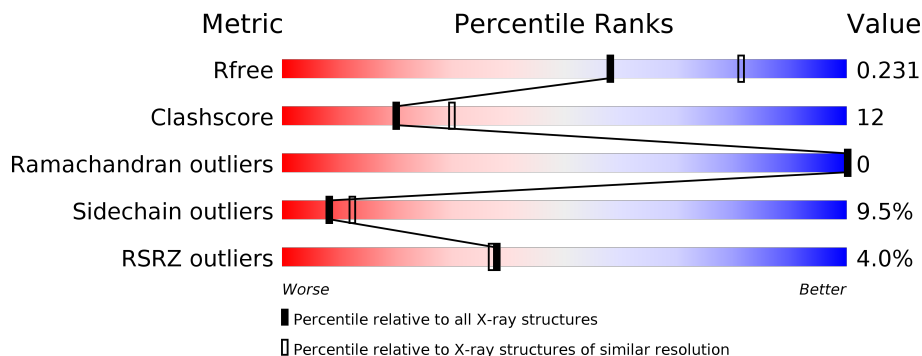
1 Overall quality at a glance

The following experimental techniques were used to determine the structure:

X-RAY DIFFRACTION

The reported resolution of this entry is 2.40 Å.

Percentile scores (ranging between 0-100) for global validation metrics of the entry are shown in the following graphic. The table shows the number of entries on which the scores are based.



Metric	Whole archive (#Entries)	Similar resolution (#Entries, resolution range(Å))
R_{free}	130704	3907 (2.40-2.40)
Clashscore	141614	4398 (2.40-2.40)
Ramachandran outliers	138981	4318 (2.40-2.40)
Sidechain outliers	138945	4319 (2.40-2.40)
RSRZ outliers	127900	3811 (2.40-2.40)

The table below summarises the geometric issues observed across the polymeric chains and their fit to the electron density. The red, orange, yellow and green segments on the lower bar indicate the fraction of residues that contain outliers for ≥ 3 , 2, 1 and 0 types of geometric quality criteria respectively. A grey segment represents the fraction of residues that are not modelled. The numeric value for each fraction is indicated below the corresponding segment, with a dot representing fractions $\leq 5\%$. The upper red bar (where present) indicates the fraction of residues that have poor fit to the electron density. The numeric value is given above the bar.

Mol	Chain	Length	Quality of chain
1	A	230	<p>3% 78% 19%</p>
1	B	230	<p>5% 80% 16%</p>
2	C	10	<p>60% 40%</p>
2	D	10	<p>10% 50% 50%</p>

2 Entry composition

There are 4 unique types of molecules in this entry. The entry contains 4196 atoms, of which 0 are hydrogens and 0 are deuteriums.

In the tables below, the ZeroOcc column contains the number of atoms modelled with zero occupancy, the AltConf column contains the number of residues with at least one atom in alternate conformation and the Trace column contains the number of residues modelled with at most 2 atoms.

- Molecule 1 is a protein called 14-3-3 protein zeta/delta.

Mol	Chain	Residues	Atoms					ZeroOcc	AltConf	Trace
			Total	C	N	O	S			
1	A	229	1839	1153	308	368	10	0	1	0
1	B	229	1836	1151	308	367	10	0	0	0

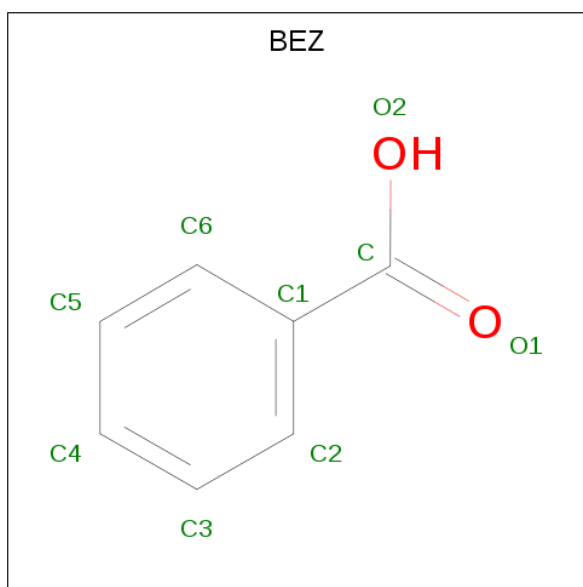
- Molecule 2 is a protein called Exoenzyme S.

Mol	Chain	Residues	Atoms				ZeroOcc	AltConf	Trace
			Total	C	N	O			
2	C	10	77	52	10	15	0	0	0
2	D	10	77	52	10	15	0	0	0

There are 2 discrepancies between the modelled and reference sequences:

Chain	Residue	Modelled	Actual	Comment	Reference
C	425	ZS8	ALA	engineered mutation	UNP Q93SQ3
D	425	ZS8	ALA	engineered mutation	UNP Q93SQ3

- Molecule 3 is BENZOIC ACID (three-letter code: BEZ) (formula: C₇H₆O₂).



Mol	Chain	Residues	Atoms	ZeroOcc	AltConf
3	B	1	Total C O 9 7 2	0	0

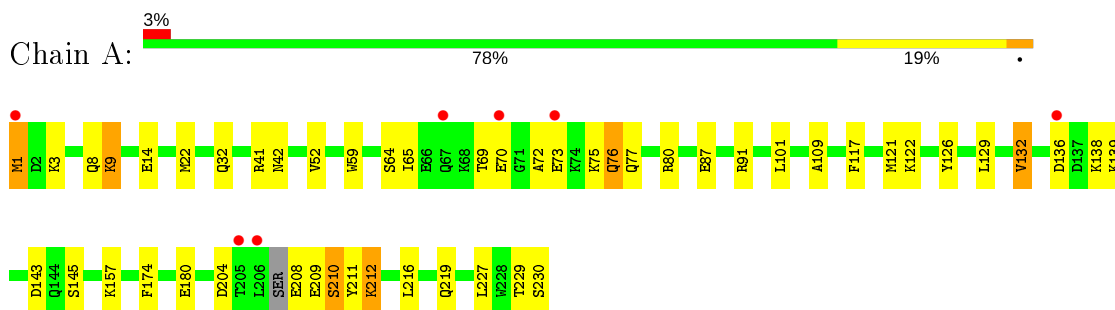
- Molecule 4 is water.

Mol	Chain	Residues	Atoms	ZeroOcc	AltConf
4	A	170	Total O 170 170	0	0
4	B	168	Total O 168 168	0	0
4	C	9	Total O 9 9	0	0
4	D	11	Total O 11 11	0	0

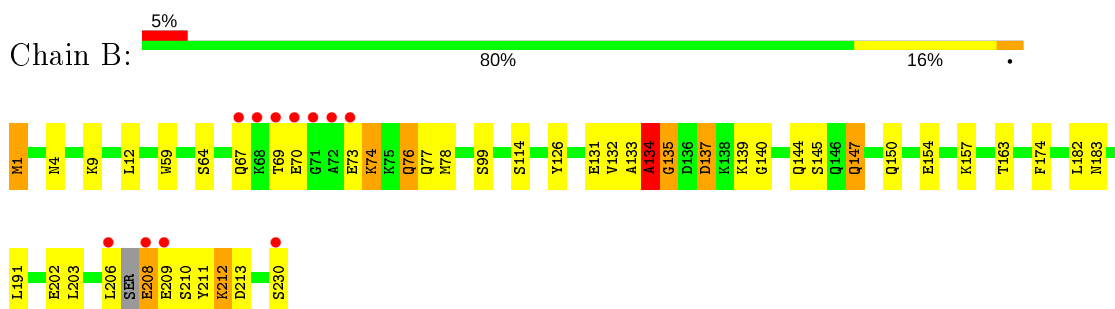
3 Residue-property plots [i](#)

These plots are drawn for all protein, RNA and DNA chains in the entry. The first graphic for a chain summarises the proportions of the various outlier classes displayed in the second graphic. The second graphic shows the sequence view annotated by issues in geometry and electron density. Residues are color-coded according to the number of geometric quality criteria for which they contain at least one outlier: green = 0, yellow = 1, orange = 2 and red = 3 or more. A red dot above a residue indicates a poor fit to the electron density ($RSRZ > 2$). Stretches of 2 or more consecutive residues without any outlier are shown as a green connector. Residues present in the sample, but not in the model, are shown in grey.

- Molecule 1: 14-3-3 protein zeta/delta



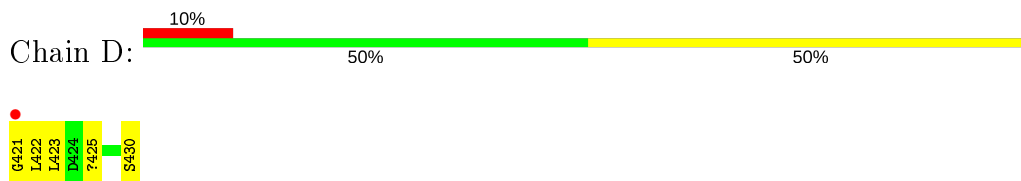
- Molecule 1: 14-3-3 protein zeta/delta



- Molecule 2: Exoenzyme S



- Molecule 2: Exoenzyme S



4 Data and refinement statistics

Property	Value	Source
Space group	P 21 21 21	Depositor
Cell constants a, b, c, α , β , γ	83.94Å 105.58Å 114.51Å 90.00° 90.00° 90.00°	Depositor
Resolution (Å)	47.94 – 2.40 47.94 – 2.40	Depositor EDS
% Data completeness (in resolution range)	100.0 (47.94-2.40) 100.0 (47.94-2.40)	Depositor EDS
R_{merge}	0.05	Depositor
R_{sym}	(Not available)	Depositor
$\langle I/\sigma(I) \rangle$ ¹	4.23 (at 2.39Å)	Xtrriage
Refinement program	REFMAC 2.5.1	Depositor
R, R_{free}	0.163 , 0.219 0.183 , 0.231	Depositor DCC
R_{free} test set	2025 reflections (5.00%)	wwPDB-VP
Wilson B-factor (Å ²)	56.9	Xtrriage
Anisotropy	0.212	Xtrriage
Bulk solvent k_{sol} (e/Å ³), B_{sol} (Å ²)	0.34 , 56.3	EDS
L-test for twinning ²	$\langle L \rangle = 0.48$, $\langle L^2 \rangle = 0.31$	Xtrriage
Estimated twinning fraction	No twinning to report.	Xtrriage
F_o, F_c correlation	0.97	EDS
Total number of atoms	4196	wwPDB-VP
Average B, all atoms (Å ²)	65.0	wwPDB-VP

Xtrriage's analysis on translational NCS is as follows: *The largest off-origin peak in the Patterson function is 15.76% of the height of the origin peak. No significant pseudotranslation is detected.*

¹Intensities estimated from amplitudes.

²Theoretical values of $\langle |L| \rangle$, $\langle L^2 \rangle$ for acentric reflections are 0.5, 0.333 respectively for untwinned datasets, and 0.375, 0.2 for perfectly twinned datasets.

5 Model quality [i](#)

5.1 Standard geometry [i](#)

Bond lengths and bond angles in the following residue types are not validated in this section: BEZ, ZS8, MK8

The Z score for a bond length (or angle) is the number of standard deviations the observed value is removed from the expected value. A bond length (or angle) with $|Z| > 5$ is considered an outlier worth inspection. RMSZ is the root-mean-square of all Z scores of the bond lengths (or angles).

Mol	Chain	Bond lengths		Bond angles	
		RMSZ	# Z >5	RMSZ	# Z >5
1	A	0.97	0/1866	0.84	0/2507
1	B	0.94	0/1860	0.92	2/2499 (0.1%)
2	C	1.17	0/52	0.85	0/66
2	D	1.08	0/52	0.72	0/66
All	All	0.96	0/3830	0.88	2/5138 (0.0%)

Chiral center outliers are detected by calculating the chiral volume of a chiral center and verifying if the center is modelled as a planar moiety or with the opposite hand. A planarity outlier is detected by checking planarity of atoms in a peptide group, atoms in a mainchain group or atoms of a sidechain that are expected to be planar.

Mol	Chain	#Chirality outliers	#Planarity outliers
1	B	0	1

There are no bond length outliers.

All (2) bond angle outliers are listed below:

Mol	Chain	Res	Type	Atoms	Z	Observed($^{\circ}$)	Ideal($^{\circ}$)
1	B	134	ALA	CB-CA-C	9.44	124.27	110.10
1	B	135	GLY	N-CA-C	-8.29	92.37	113.10

There are no chirality outliers.

All (1) planarity outliers are listed below:

Mol	Chain	Res	Type	Group
1	B	134	ALA	Peptide

5.2 Too-close contacts

In the following table, the Non-H and H(model) columns list the number of non-hydrogen atoms and hydrogen atoms in the chain respectively. The H(added) column lists the number of hydrogen atoms added and optimized by MolProbity. The Clashes column lists the number of clashes within the asymmetric unit, whereas Symm-Clashes lists symmetry related clashes.

Mol	Chain	Non-H	H(model)	H(added)	Clashes	Symm-Clashes
1	A	1839	0	1832	42	0
1	B	1836	0	1827	46	0
2	C	77	0	64	3	0
2	D	77	0	63	7	0
3	B	9	0	5	0	0
4	A	170	0	0	25	1
4	B	168	0	0	15	1
4	C	9	0	0	0	0
4	D	11	0	0	1	0
All	All	4196	0	3791	95	1

The all-atom clashscore is defined as the number of clashes found per 1000 atoms (including hydrogen atoms). The all-atom clashscore for this structure is 12.

All (95) close contacts within the same asymmetric unit are listed below, sorted by their clash magnitude.

Atom-1	Atom-2	Interatomic distance (Å)	Clash overlap (Å)
1:A:230:SER:CB	4:A:301:HOH:O	1.85	1.23
1:B:208:GLU:O	1:B:211:TYR:HE1	1.27	1.18
2:D:425:ZS8:CT1	2:D:425:ZS8:CK1	2.23	1.15
2:D:425:ZS8:CE1	2:D:425:ZS8:CI1	2.24	1.14
1:B:208:GLU:HG3	1:B:209:GLU:HA	1.25	1.13
1:A:9:LYS:HG3	4:A:447:HOH:O	1.56	1.06
1:B:206:LEU:CD2	4:B:549:HOH:O	2.09	1.00
1:A:1:MET:CE	4:A:447:HOH:O	2.08	1.00
1:B:208:GLU:O	1:B:211:TYR:CE1	2.15	1.00
1:A:42:ASN:HB3	4:A:435:HOH:O	1.62	0.99
1:A:1:MET:HE1	4:A:447:HOH:O	1.64	0.97
1:B:208:GLU:CG	1:B:209:GLU:HA	1.99	0.92
1:A:230:SER:OG	4:A:301:HOH:O	1.86	0.82
2:D:425:ZS8:CI1	2:D:425:ZS8:CT1	0.93	0.81
1:A:109:ALA:O	4:A:302:HOH:O	1.99	0.80
1:A:229:THR:O	4:A:303:HOH:O	2.01	0.79
1:B:208:GLU:C	1:B:211:TYR:HE1	1.86	0.79
1:B:209:GLU:HG3	1:B:210:SER:N	1.97	0.78

Continued on next page...

Continued from previous page...

Atom-1	Atom-2	Interatomic distance (Å)	Clash overlap (Å)
1:A:9:LYS:CG	4:A:447:HOH:O	2.22	0.76
1:A:230:SER:HB2	4:A:301:HOH:O	1.67	0.74
1:A:8:GLN:HB3	1:B:78:MET:HE1	1.74	0.69
1:A:101:LEU:HD11	1:A:121:MET:HG2	1.74	0.69
1:B:69:THR:O	1:B:76:GLN:HG3	1.93	0.69
1:A:211:TYR:OH	4:A:304:HOH:O	2.09	0.69
1:A:180:GLU:HG2	4:A:463:HOH:O	1.92	0.68
1:B:208:GLU:N	4:B:406:HOH:O	2.28	0.66
1:B:137:ASP:OD2	1:B:137:ASP:N	2.28	0.66
1:A:59:TRP:CE2	1:A:132:VAL:HG23	2.31	0.66
1:A:1:MET:HE2	4:A:447:HOH:O	1.80	0.65
1:B:67:GLN:HA	1:B:67:GLN:OE1	1.96	0.64
4:A:464:HOH:O	1:B:1:MET:HE1	1.96	0.63
1:A:69:THR:HG1	1:A:76:GLN:HG3	1.65	0.62
1:A:219:GLN:NE2	4:A:309:HOH:O	2.34	0.61
4:A:464:HOH:O	1:B:1:MET:CE	2.47	0.61
1:B:208:GLU:HG3	1:B:209:GLU:CA	2.17	0.61
1:B:73:GLU:HG3	1:B:74:LYS:N	2.18	0.58
1:A:212:LYS:HB3	4:A:310:HOH:O	2.03	0.58
1:B:209:GLU:HG2	4:B:476:HOH:O	2.03	0.57
2:C:421:GLY:O	2:C:422:MK8:HB1A	2.04	0.57
1:A:208:GLU:HA	4:A:440:HOH:O	2.03	0.57
1:B:213:ASP:HB3	2:D:423:LEU:HD21	1.85	0.57
1:A:65:ILE:O	1:A:69:THR:HG23	2.05	0.57
1:A:77:GLN:HG3	1:A:80:ARG:NH1	2.20	0.56
1:B:208:GLU:C	1:B:211:TYR:CE1	2.74	0.56
1:B:133:ALA:O	1:B:134:ALA:HB2	2.06	0.56
1:A:69:THR:OG1	1:A:76:GLN:HG3	2.05	0.55
1:A:87:GLU:OE2	1:A:91:ARG:NH2	2.38	0.54
2:D:430:SER:C	4:D:507:HOH:O	2.45	0.54
1:B:208:GLU:HB2	4:B:409:HOH:O	2.06	0.54
1:B:140:GLY:O	1:B:144:GLN:HG3	2.08	0.53
1:B:209:GLU:N	1:B:211:TYR:CE1	2.77	0.53
1:B:64:SER:O	1:B:67:GLN:HB2	2.09	0.52
1:B:209:GLU:OE1	4:B:403:HOH:O	2.19	0.52
1:B:206:LEU:HD21	4:B:549:HOH:O	1.93	0.52
1:B:206:LEU:HD23	4:B:549:HOH:O	1.95	0.51
1:B:210:SER:OG	4:B:402:HOH:O	2.01	0.50
1:B:147:GLN:HB3	4:B:521:HOH:O	2.11	0.50
1:A:3:LYS:HD3	1:A:32:GLN:OE1	2.13	0.49
2:D:421:GLY:O	2:D:422:MK8:HB1A	2.12	0.49

Continued on next page...

Continued from previous page...

Atom-1	Atom-2	Interatomic distance (Å)	Clash overlap (Å)
1:A:132:VAL:O	1:A:132:VAL:HG13	2.11	0.49
1:B:163:THR:HG23	1:B:202:GLU:OE2	2.12	0.48
1:A:122:LYS:HE3	4:A:326:HOH:O	2.14	0.47
2:D:422:MK8:HB1B	2:D:422:MK8:HGA	1.73	0.47
1:A:212:LYS:HD3	1:A:212:LYS:C	2.34	0.47
1:A:41:ARG:HD3	4:A:338:HOH:O	2.15	0.47
1:B:144:GLN:NE2	4:B:408:HOH:O	2.30	0.47
1:A:157:LYS:HE3	1:A:157:LYS:HB3	1.74	0.47
1:A:73:GLU:OE1	1:A:73:GLU:HA	2.14	0.46
1:A:126:TYR:HB3	1:A:145:SER:HB2	1.97	0.46
1:B:212:LYS:HD3	1:B:212:LYS:O	2.15	0.46
1:B:150:GLN:O	1:B:154:GLU:HG2	2.16	0.46
1:B:203:LEU:HA	4:B:524:HOH:O	2.15	0.45
1:B:69:THR:HB	1:B:76:GLN:CG	2.46	0.45
1:A:210:SER:HA	4:A:388:HOH:O	2.17	0.44
1:B:131:GLU:OE1	4:B:404:HOH:O	2.21	0.44
1:B:209:GLU:CG	1:B:210:SER:N	2.75	0.44
1:A:14:GLU:HB2	1:A:22:MET:SD	2.58	0.44
1:B:69:THR:HB	1:B:76:GLN:HG3	2.00	0.44
1:A:59:TRP:CD1	1:A:87:GLU:HG2	2.53	0.44
1:A:117:PHE:CE2	1:A:121:MET:HE2	2.54	0.43
1:A:8:GLN:HB3	1:B:78:MET:CE	2.46	0.43
1:B:209:GLU:HB2	4:B:403:HOH:O	2.18	0.43
4:A:395:HOH:O	2:C:422:MK8:HB	2.19	0.43
1:B:210:SER:HA	4:B:402:HOH:O	2.19	0.42
1:A:129:LEU:HA	1:A:129:LEU:HD23	1.83	0.42
2:C:426:LEU:HA	2:C:426:LEU:HD23	1.82	0.42
1:B:209:GLU:CG	4:B:476:HOH:O	2.67	0.42
1:B:134:ALA:HA	1:B:135:GLY:HA2	1.73	0.42
1:B:59:TRP:CE2	1:B:132:VAL:HG12	2.56	0.41
1:B:182:LEU:O	1:B:183:ASN:C	2.58	0.41
1:A:9:LYS:NZ	4:A:306:HOH:O	2.24	0.41
1:B:126:TYR:HB3	1:B:145:SER:HB2	2.03	0.41
1:A:59:TRP:NE1	1:A:132:VAL:HG23	2.36	0.40
1:A:72:ALA:HA	4:A:407:HOH:O	2.20	0.40
1:A:212:LYS:CB	4:A:310:HOH:O	2.66	0.40

All (1) symmetry-related close contacts are listed below. The label for Atom-2 includes the symmetry operator and encoded unit-cell translations to be applied.

Atom-1	Atom-2	Interatomic distance (Å)	Clash overlap (Å)
4:A:450:HOH:O	4:B:528:HOH:O[4_555]	2.01	0.19

5.3 Torsion angles [i](#)

5.3.1 Protein backbone [i](#)

In the following table, the Percentiles column shows the percent Ramachandran outliers of the chain as a percentile score with respect to all X-ray entries followed by that with respect to entries of similar resolution.

The Analysed column shows the number of residues for which the backbone conformation was analysed, and the total number of residues.

Mol	Chain	Analysed	Favoured	Allowed	Outliers	Percentiles	
1	A	226/230 (98%)	217 (96%)	9 (4%)	0	100	100
1	B	225/230 (98%)	218 (97%)	7 (3%)	0	100	100
2	C	6/10 (60%)	6 (100%)	0	0	100	100
2	D	6/10 (60%)	6 (100%)	0	0	100	100
All	All	463/480 (96%)	447 (96%)	16 (4%)	0	100	100

There are no Ramachandran outliers to report.

5.3.2 Protein sidechains [i](#)

In the following table, the Percentiles column shows the percent sidechain outliers of the chain as a percentile score with respect to all X-ray entries followed by that with respect to entries of similar resolution.

The Analysed column shows the number of residues for which the sidechain conformation was analysed, and the total number of residues.

Mol	Chain	Analysed	Rotameric	Outliers	Percentiles	
1	A	200/200 (100%)	181 (90%)	19 (10%)	8	12
1	B	199/200 (100%)	180 (90%)	19 (10%)	8	12
2	C	6/6 (100%)	5 (83%)	1 (17%)	2	2
2	D	6/6 (100%)	6 (100%)	0	100	100
All	All	411/412 (100%)	372 (90%)	39 (10%)	8	12

All (39) residues with a non-rotameric sidechain are listed below:

Mol	Chain	Res	Type
1	A	1	MET
1	A	9	LYS
1	A	52	VAL
1	A	64	SER
1	A	70	GLU
1	A	75	LYS
1	A	76	GLN
1	A	132	VAL
1	A	136	ASP
1	A	138	LYS
1	A	139	LYS
1	A	143	ASP
1	A	174	PHE
1	A	204	ASP
1	A	209	GLU
1	A	210	SER
1	A	212	LYS
1	A	216	LEU
1	A	227	LEU
1	B	1	MET
1	B	4	ASN
1	B	9	LYS
1	B	12	LEU
1	B	70	GLU
1	B	74	LYS
1	B	76	GLN
1	B	77	GLN
1	B	99	SER
1	B	114	SER
1	B	137	ASP
1	B	139	LYS
1	B	147	GLN
1	B	157	LYS
1	B	174	PHE
1	B	191	LEU
1	B	208	GLU
1	B	212	LYS
1	B	230	SER
2	C	428	LEU

Some sidechains can be flipped to improve hydrogen bonding and reduce clashes. There are no such sidechains identified.

5.3.3 RNA [i](#)

There are no RNA molecules in this entry.

5.4 Non-standard residues in protein, DNA, RNA chains [i](#)

2 non-standard protein/DNA/RNA residues are modelled in this entry.

In the following table, the Counts columns list the number of bonds (or angles) for which Mogul statistics could be retrieved, the number of bonds (or angles) that are observed in the model and the number of bonds (or angles) that are defined in the Chemical Component Dictionary. The Link column lists molecule types, if any, to which the group is linked. The Z score for a bond length (or angle) is the number of standard deviations the observed value is removed from the expected value. A bond length (or angle) with $|Z| > 2$ is considered an outlier worth inspection. RMSZ is the root-mean-square of all Z scores of the bond lengths (or angles).

Mol	Type	Chain	Res	Link	Bond lengths			Bond angles		
					Counts	RMSZ	# Z > 2	Counts	RMSZ	# Z > 2
2	MK8	D	422	2	5,8,9	1.95	1 (20%)	4,10,12	0.84	0
2	MK8	C	422	2	5,8,9	1.16	1 (20%)	4,10,12	1.34	0

In the following table, the Chirals column lists the number of chiral outliers, the number of chiral centers analysed, the number of these observed in the model and the number defined in the Chemical Component Dictionary. Similar counts are reported in the Torsion and Rings columns. '-' means no outliers of that kind were identified.

Mol	Type	Chain	Res	Link	Chirals	Torsions	Rings
2	MK8	D	422	2	-	3/6/8/11	-
2	MK8	C	422	2	-	4/6/8/11	-

All (2) bond length outliers are listed below:

Mol	Chain	Res	Type	Atoms	Z	Observed(Å)	Ideal(Å)
2	D	422	MK8	CB-CA	-4.31	1.50	1.55
2	C	422	MK8	CB-CA	-2.43	1.52	1.55

There are no bond angle outliers.

There are no chirality outliers.

All (7) torsion outliers are listed below:

Mol	Chain	Res	Type	Atoms
2	D	422	MK8	N-CA-CB-CG

Continued on next page...

Continued from previous page...

Mol	Chain	Res	Type	Atoms
2	C	422	MK8	N-CA-CB-CG
2	C	422	MK8	CB1-CA-CB-CG
2	C	422	MK8	CA-CB-CG-CD
2	D	422	MK8	CA-CB-CG-CD
2	C	422	MK8	C-CA-CB-CG
2	D	422	MK8	O-C-CA-CB1

There are no ring outliers.

2 monomers are involved in 4 short contacts:

Mol	Chain	Res	Type	Clashes	Symm-Clashes
2	D	422	MK8	2	0
2	C	422	MK8	2	0

5.5 Carbohydrates [i](#)

There are no carbohydrates in this entry.

5.6 Ligand geometry [i](#)

1 ligand is modelled in this entry.

In the following table, the Counts columns list the number of bonds (or angles) for which Mogul statistics could be retrieved, the number of bonds (or angles) that are observed in the model and the number of bonds (or angles) that are defined in the Chemical Component Dictionary. The Link column lists molecule types, if any, to which the group is linked. The Z score for a bond length (or angle) is the number of standard deviations the observed value is removed from the expected value. A bond length (or angle) with $|Z| > 2$ is considered an outlier worth inspection. RMSZ is the root-mean-square of all Z scores of the bond lengths (or angles).

Mol	Type	Chain	Res	Link	Bond lengths			Bond angles		
					Counts	RMSZ	$\# Z > 2$	Counts	RMSZ	$\# Z > 2$
3	BEZ	B	301	-	7,9,9	1.40	1 (14%)	8,11,11	0.44	0

In the following table, the Chirals column lists the number of chiral outliers, the number of chiral centers analysed, the number of these observed in the model and the number defined in the Chemical Component Dictionary. Similar counts are reported in the Torsion and Rings columns. '-' means no outliers of that kind were identified.

Mol	Type	Chain	Res	Link	Chirals	Torsions	Rings
3	BEZ	B	301	-	-	0/0/4/4	0/1/1/1

All (1) bond length outliers are listed below:

Mol	Chain	Res	Type	Atoms	Z	Observed(Å)	Ideal(Å)
3	B	301	BEZ	C1-C	3.29	1.50	1.47

There are no bond angle outliers.

There are no chirality outliers.

There are no torsion outliers.

There are no ring outliers.

No monomer is involved in short contacts.

5.7 Other polymers [i](#)

There are no such residues in this entry.

5.8 Polymer linkage issues [i](#)

There are no chain breaks in this entry.

6 Fit of model and data

6.1 Protein, DNA and RNA chains

In the following table, the column labelled ‘#RSRZ> 2’ contains the number (and percentage) of RSRZ outliers, followed by percent RSRZ outliers for the chain as percentile scores relative to all X-ray entries and entries of similar resolution. The OWAB column contains the minimum, median, 95th percentile and maximum values of the occupancy-weighted average B-factor per residue. The column labelled ‘Q< 0.9’ lists the number of (and percentage) of residues with an average occupancy less than 0.9.

Mol	Chain	Analysed	<RSRZ>	#RSRZ>2	OWAB(Å ²)	Q<0.9
1	A	229/230 (99%)	-0.05	7 (3%) 49 47	45, 59, 108, 145	2 (0%)
1	B	229/230 (99%)	0.06	11 (4%) 30 29	24, 58, 108, 136	2 (0%)
2	C	8/10 (80%)	-0.21	0 100 100	58, 62, 74, 95	0
2	D	8/10 (80%)	-0.01	1 (12%) 3 3	54, 61, 77, 109	0
All	All	474/480 (98%)	-0.00	19 (4%) 38 37	24, 59, 108, 145	4 (0%)

All (19) RSRZ outliers are listed below:

Mol	Chain	Res	Type	RSRZ
1	A	136	ASP	5.1
1	B	70	GLU	4.1
1	B	206	LEU	4.0
1	A	1	MET	3.5
1	A	206	LEU	3.4
1	B	72	ALA	3.1
1	B	68	LYS	3.1
1	B	69	THR	2.8
1	B	71	GLY	2.8
1	B	209	GLU	2.6
1	A	70	GLU	2.6
2	D	421	GLY	2.4
1	B	230	SER	2.3
1	A	73	GLU	2.2
1	B	73	GLU	2.2
1	A	67	GLN	2.1
1	A	205	THR	2.1
1	B	67	GLN	2.1
1	B	208	GLU	2.1

6.2 Non-standard residues in protein, DNA, RNA chains [i](#)

In the following table, the Atoms column lists the number of modelled atoms in the group and the number defined in the chemical component dictionary. The B-factors column lists the minimum, median, 95th percentile and maximum values of B factors of atoms in the group. The column labelled 'Q< 0.9' lists the number of atoms with occupancy less than 0.9.

Mol	Type	Chain	Res	Atoms	RSCC	RSR	B-factors(Å ²)	Q<0.9
2	MK8	C	422	9/10	0.92	0.17	68,85,119,120	0
2	MK8	D	422	9/10	0.96	0.17	74,89,94,103	0

6.3 Carbohydrates [i](#)

There are no carbohydrates in this entry.

6.4 Ligands [i](#)

In the following table, the Atoms column lists the number of modelled atoms in the group and the number defined in the chemical component dictionary. The B-factors column lists the minimum, median, 95th percentile and maximum values of B factors of atoms in the group. The column labelled 'Q< 0.9' lists the number of atoms with occupancy less than 0.9.

Mol	Type	Chain	Res	Atoms	RSCC	RSR	B-factors(Å ²)	Q<0.9
3	BEZ	B	301	9/9	0.99	0.16	44,45,49,49	0

6.5 Other polymers [i](#)

There are no such residues in this entry.