



Full wwPDB X-ray Structure Validation Report ⓘ

Apr 28, 2024 – 07:48 pm BST

PDB ID : 2J4S
Title : P450 BM3 heme domain in complex with DMSO
Authors : Kuper, J.; Tuck-Seng, W.; Roccatano, D.; Wilmanns, M.; Schwaneberg, U.
Deposited on : 2006-09-05
Resolution : 2.10 Å(reported)

This is a Full wwPDB X-ray Structure Validation Report for a publicly released PDB entry.

We welcome your comments at validation@mail.wwpdb.org

A user guide is available at

<https://www.wwpdb.org/validation/2017/XrayValidationReportHelp>

with specific help available everywhere you see the ⓘ symbol.

The types of validation reports are described at

<http://www.wwpdb.org/validation/2017/FAQs#types>.

The following versions of software and data (see [references ⓘ](#)) were used in the production of this report:

MolProbity : 4.02b-467
Mogul : 1.8.4, CSD as541be (2020)
Xtriage (Phenix) : 1.13
EDS : 2.36.2
buster-report : 1.1.7 (2018)
Percentile statistics : 20191225.v01 (using entries in the PDB archive December 25th 2019)
Refmac : 5.8.0158
CCP4 : 7.0.044 (Gargrove)
Ideal geometry (proteins) : Engh & Huber (2001)
Ideal geometry (DNA, RNA) : Parkinson et al. (1996)
Validation Pipeline (wwPDB-VP) : 2.36.2

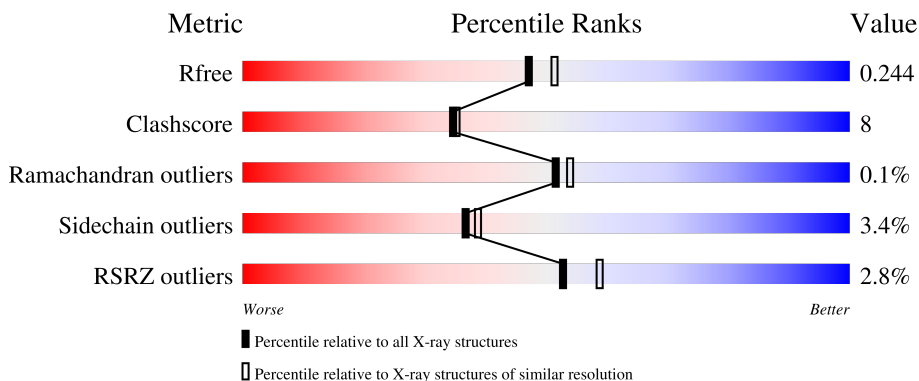
1 Overall quality at a glance

The following experimental techniques were used to determine the structure:

X-RAY DIFFRACTION

The reported resolution of this entry is 2.10 Å.

Percentile scores (ranging between 0-100) for global validation metrics of the entry are shown in the following graphic. The table shows the number of entries on which the scores are based.



Metric	Whole archive (#Entries)	Similar resolution (#Entries, resolution range(Å))
R_{free}	130704	5197 (2.10-2.10)
Clashscore	141614	5710 (2.10-2.10)
Ramachandran outliers	138981	5647 (2.10-2.10)
Sidechain outliers	138945	5648 (2.10-2.10)
RSRZ outliers	127900	5083 (2.10-2.10)

The table below summarises the geometric issues observed across the polymeric chains and their fit to the electron density. The red, orange, yellow and green segments of the lower bar indicate the fraction of residues that contain outliers for ≥ 3 , 2, 1 and 0 types of geometric quality criteria respectively. A grey segment represents the fraction of residues that are not modelled. The numeric value for each fraction is indicated below the corresponding segment, with a dot representing fractions $\leq 5\%$. The upper red bar (where present) indicates the fraction of residues that have poor fit to the electron density. The numeric value is given above the bar.

Mol	Chain	Length	Quality of chain
1	A	455	 2% 80% 17% ..
1	B	455	 4% 81% 16% ..

The following table lists non-polymeric compounds, carbohydrate monomers and non-standard residues in protein, DNA, RNA chains that are outliers for geometric or electron-density-fit criteria:

Mol	Type	Chain	Res	Chirality	Geometry	Clashes	Electron density
3	PEG	B	1460	-	-	X	-

2 Entry composition [i](#)

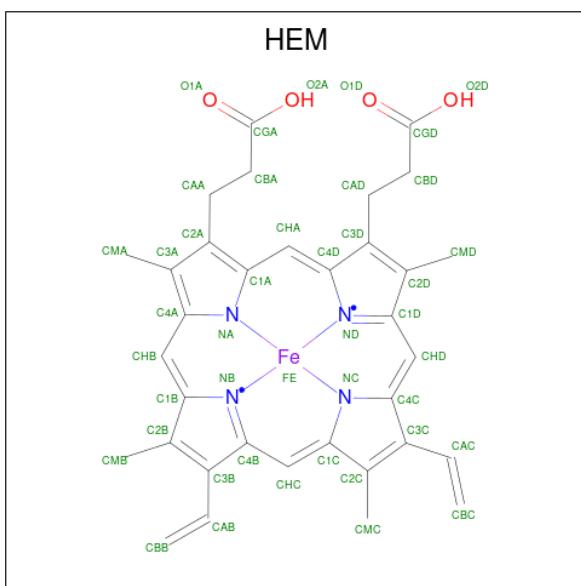
There are 5 unique types of molecules in this entry. The entry contains 7866 atoms, of which 0 are hydrogens and 0 are deuteriums.

In the tables below, the ZeroOcc column contains the number of atoms modelled with zero occupancy, the AltConf column contains the number of residues with at least one atom in alternate conformation and the Trace column contains the number of residues modelled with at most 2 atoms.

- Molecule 1 is a protein called BIFUNCTIONAL P-450\;NADPH-P450 REDUCTASE.

Mol	Chain	Residues	Atoms					ZeroOcc	AltConf	Trace
			Total	C	N	O	S			
1	A	452	Total 3654	C 2335	N 621	O 681	S 17	0	1	0
1	B	450	Total 3635	C 2324	N 618	O 676	S 17	0	0	0

- Molecule 2 is PROTOPORPHYRIN IX CONTAINING FE (three-letter code: HEM) (formula: $C_{34}H_{32}FeN_4O_4$).



Mol	Chain	Residues	Atoms					ZeroOcc	AltConf
			Total	C	Fe	N	O		
2	A	1	Total 43	C 34	Fe 1	N 4	O 4	0	0
2	B	1	Total 43	C 34	Fe 1	N 4	O 4	0	0

- Molecule 3 is DI(HYDROXYETHYL)ETHER (three-letter code: PEG) (formula: $C_4H_{10}O_3$).



Mol	Chain	Residues	Atoms	ZeroOcc	AltConf
3	A	1	Total C O 7 4 3	0	0
3	A	1	Total C O 7 4 3	0	0
3	B	1	Total C O 7 4 3	0	0
3	B	1	Total C O 7 4 3	0	0
3	B	1	Total C O 7 4 3	0	0

- Molecule 4 is ZINC ION (three-letter code: ZN) (formula: Zn).

Mol	Chain	Residues	Atoms	ZeroOcc	AltConf
4	B	1	Total Zn 1 1	0	0

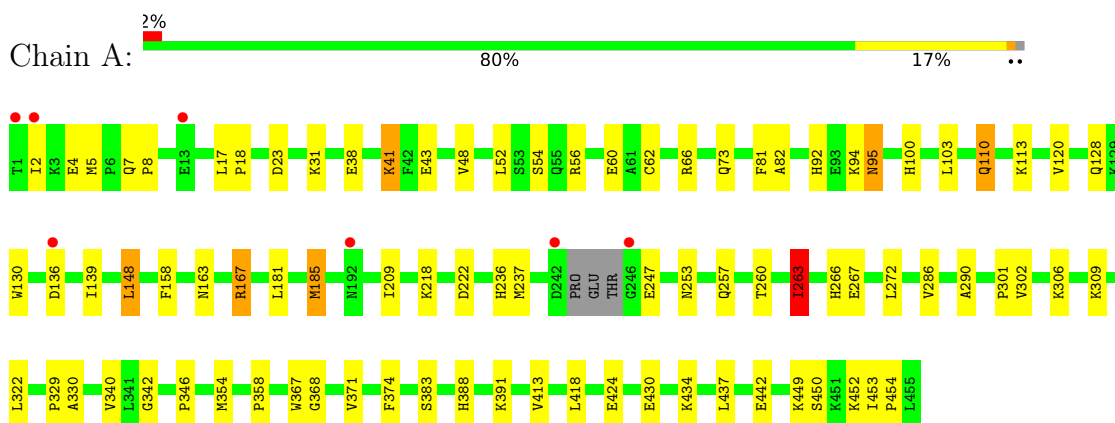
- Molecule 5 is water.

Mol	Chain	Residues	Atoms	ZeroOcc	AltConf
5	A	246	Total O 246 246	0	0
5	B	209	Total O 209 209	0	0

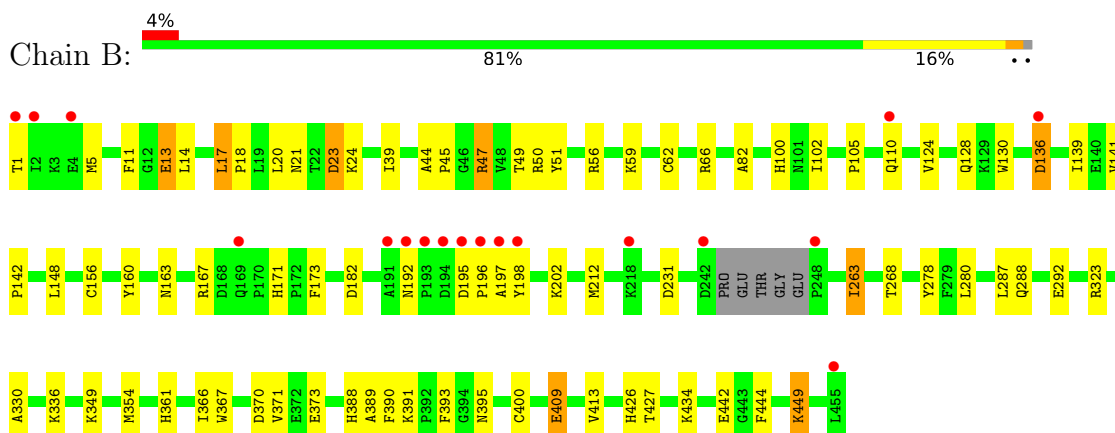
3 Residue-property plots [i](#)

These plots are drawn for all protein, RNA, DNA and oligosaccharide chains in the entry. The first graphic for a chain summarises the proportions of the various outlier classes displayed in the second graphic. The second graphic shows the sequence view annotated by issues in geometry and electron density. Residues are color-coded according to the number of geometric quality criteria for which they contain at least one outlier: green = 0, yellow = 1, orange = 2 and red = 3 or more. A red dot above a residue indicates a poor fit to the electron density ($RSRZ > 2$). Stretches of 2 or more consecutive residues without any outlier are shown as a green connector. Residues present in the sample, but not in the model, are shown in grey.

- Molecule 1: BIFUNCTIONAL P-450\;:NADPH-P450 REDUCTASE



- Molecule 1: BIFUNCTIONAL P-450\;:NADPH-P450 REDUCTASE



4 Data and refinement statistics

Property	Value	Source
Space group	P 21 21 21	Depositor
Cell constants a, b, c, α , β , γ	79.60Å 88.30Å 151.27Å 90.00° 90.00° 90.00°	Depositor
Resolution (Å)	21.78 – 2.10 21.78 – 2.10	Depositor EDS
% Data completeness (in resolution range)	99.0 (21.78-2.10) 99.0 (21.78-2.10)	Depositor EDS
R_{merge}	0.12	Depositor
R_{sym}	(Not available)	Depositor
$\langle I/\sigma(I) \rangle$ ¹	2.11 (at 2.09Å)	Xtrriage
Refinement program	REFMAC 5.2.0019	Depositor
R, R_{free}	0.190 , 0.243 0.192 , 0.244	Depositor DCC
R_{free} test set	3151 reflections (5.06%)	wwPDB-VP
Wilson B-factor (Å ²)	21.4	Xtrriage
Anisotropy	0.118	Xtrriage
Bulk solvent k_{sol} (e/Å ³), B_{sol} (Å ²)	0.37 , 47.3	EDS
L-test for twinning ²	$\langle L \rangle = 0.48$, $\langle L^2 \rangle = 0.31$	Xtrriage
Estimated twinning fraction	No twinning to report.	Xtrriage
F_o, F_c correlation	0.94	EDS
Total number of atoms	7866	wwPDB-VP
Average B, all atoms (Å ²)	27.0	wwPDB-VP

Xtrriage's analysis on translational NCS is as follows: *The largest off-origin peak in the Patterson function is 3.19% of the height of the origin peak. No significant pseudotranslation is detected.*

¹Intensities estimated from amplitudes.

²Theoretical values of $\langle |L| \rangle$, $\langle L^2 \rangle$ for acentric reflections are 0.5, 0.333 respectively for untwinned datasets, and 0.375, 0.2 for perfectly twinned datasets.

5 Model quality [i](#)

5.1 Standard geometry [i](#)

Bond lengths and bond angles in the following residue types are not validated in this section: HEM, ZN, PEG

The Z score for a bond length (or angle) is the number of standard deviations the observed value is removed from the expected value. A bond length (or angle) with $|Z| > 5$ is considered an outlier worth inspection. RMSZ is the root-mean-square of all Z scores of the bond lengths (or angles).

Mol	Chain	Bond lengths		Bond angles	
		RMSZ	# Z >5	RMSZ	# Z >5
1	A	0.68	0/3740	0.78	4/5052 (0.1%)
1	B	0.66	1/3718 (0.0%)	0.73	1/5022 (0.0%)
All	All	0.67	1/7458 (0.0%)	0.75	5/10074 (0.0%)

Chiral center outliers are detected by calculating the chiral volume of a chiral center and verifying if the center is modelled as a planar moiety or with the opposite hand. A planarity outlier is detected by checking planarity of atoms in a peptide group, atoms in a mainchain group or atoms of a sidechain that are expected to be planar.

Mol	Chain	#Chirality outliers	#Planarity outliers
1	B	0	1

All (1) bond length outliers are listed below:

Mol	Chain	Res	Type	Atoms	Z	Observed(Å)	Ideal(Å)
1	B	156	CYS	CB-SG	-5.22	1.73	1.81

All (5) bond angle outliers are listed below:

Mol	Chain	Res	Type	Atoms	Z	Observed(°)	Ideal(°)
1	A	148	LEU	CA-CB-CG	8.19	134.13	115.30
1	A	263	ILE	CG1-CB-CG2	-6.74	96.58	111.40
1	A	167	ARG	NE-CZ-NH2	-5.55	117.52	120.30
1	B	148	LEU	CA-CB-CG	5.54	128.05	115.30
1	A	167	ARG	NE-CZ-NH1	5.07	122.83	120.30

There are no chirality outliers.

All (1) planarity outliers are listed below:

Mol	Chain	Res	Type	Group
1	B	136	ASP	Peptide

5.2 Too-close contacts [i](#)

In the following table, the Non-H and H(model) columns list the number of non-hydrogen atoms and hydrogen atoms in the chain respectively. The H(added) column lists the number of hydrogen atoms added and optimized by MolProbity. The Clashes column lists the number of clashes within the asymmetric unit, whereas Symm-Clashes lists symmetry-related clashes.

Mol	Chain	Non-H	H(model)	H(added)	Clashes	Symm-Clashes
1	A	3654	0	3632	59	0
1	B	3635	0	3616	64	0
2	A	43	0	30	0	0
2	B	43	0	30	1	0
3	A	14	0	20	2	0
3	B	21	0	30	4	0
4	B	1	0	0	0	0
5	A	246	0	0	10	0
5	B	209	0	0	9	0
All	All	7866	0	7358	123	0

The all-atom clashscore is defined as the number of clashes found per 1000 atoms (including hydrogen atoms). The all-atom clashscore for this structure is 8.

All (123) close contacts within the same asymmetric unit are listed below, sorted by their clash magnitude.

Atom-1	Atom-2	Interatomic distance (Å)	Clash overlap (Å)
1:A:330:ALA:HB1	1:A:354:MET:CE	1.91	1.01
1:A:73:GLN:HG3	5:A:2046:HOH:O	1.63	0.98
1:A:330:ALA:HB1	1:A:354:MET:HE1	1.47	0.96
1:B:361:HIS:HE1	1:B:391:LYS:H	1.28	0.81
1:B:171:HIS:HD2	1:B:173:PHE:H	1.29	0.79
1:B:388:HIS:HD2	1:B:391:LYS:NZ	1.80	0.78
1:B:388:HIS:HD2	1:B:391:LYS:HZ3	1.32	0.75
1:B:330:ALA:HB1	1:B:354:MET:CE	2.17	0.75
1:B:21:ASN:HB3	3:B:1460:PEG:H32	1.69	0.74
1:A:100:HIS:HD2	5:A:2245:HOH:O	1.71	0.73
1:B:21:ASN:HB2	3:B:1460:PEG:H21	1.71	0.72
1:A:309:LYS:HD3	5:A:2214:HOH:O	1.88	0.72
1:A:60:GLU:CG	1:A:66:ARG:HH12	2.03	0.72
1:A:330:ALA:CB	1:A:354:MET:HE1	2.22	0.68

Continued on next page...

Continued from previous page...

Atom-1	Atom-2	Interatomic distance (Å)	Clash overlap (Å)
1:A:388:HIS:HD2	1:A:391:LYS:HZ3	1.41	0.67
1:B:163:ASN:O	1:B:167:ARG:HD2	1.95	0.66
1:B:23:ASP:HB2	5:B:2012:HOH:O	1.96	0.66
1:B:388:HIS:CD2	1:B:391:LYS:HZ3	2.12	0.66
1:B:367:TRP:HB2	1:B:371:VAL:HG12	1.80	0.64
1:A:388:HIS:HD2	1:A:391:LYS:NZ	1.95	0.64
1:A:218:LYS:HB2	5:A:2120:HOH:O	1.96	0.64
1:B:330:ALA:HB1	1:B:354:MET:HE3	1.80	0.63
1:B:171:HIS:CD2	1:B:173:PHE:H	2.16	0.63
1:B:44:ALA:HB3	1:B:47:ARG:HG3	1.81	0.62
1:B:330:ALA:HB1	1:B:354:MET:HE1	1.81	0.62
1:B:167:ARG:HD3	5:B:2089:HOH:O	1.99	0.61
1:A:110:GLN:NE2	1:A:110:GLN:H	1.98	0.61
1:A:110:GLN:H	1:A:110:GLN:HE21	1.49	0.59
1:A:2:ILE:HG13	1:A:346:PRO:HD3	1.83	0.59
1:B:21:ASN:CB	3:B:1460:PEG:H32	2.32	0.59
1:A:43:GLU:HG2	1:A:48:VAL:HG22	1.87	0.57
1:B:141:VAL:HB	1:B:142:PRO:HD3	1.85	0.57
1:A:60:GLU:CG	1:A:66:ARG:NH1	2.69	0.55
1:A:31:LYS:NZ	3:A:1457:PEG:H42	2.22	0.54
1:B:1:THR:HB	5:B:2002:HOH:O	2.09	0.53
1:B:192:ASN:O	1:B:198:TYR:HE2	1.92	0.53
1:B:17:LEU:HD22	1:B:45:PRO:HD3	1.91	0.53
1:B:288:GLN:O	1:B:292:GLU:HG3	2.09	0.53
1:A:236:HIS:HE1	5:A:2132:HOH:O	1.92	0.52
1:B:100:HIS:HD2	5:B:2205:HOH:O	1.91	0.52
1:B:366:ILE:HG21	1:B:389:ALA:HB1	1.91	0.52
1:B:330:ALA:CB	1:B:354:MET:HE1	2.40	0.52
1:A:128:GLN:NE2	5:A:2070:HOH:O	2.41	0.52
1:A:383:SER:HB2	5:A:2204:HOH:O	2.10	0.52
1:B:361:HIS:CE1	1:B:391:LYS:H	2.19	0.52
1:A:185:MET:HB3	1:A:437:LEU:HD21	1.91	0.51
1:A:266:HIS:NE2	1:A:267:GLU:HG3	2.25	0.51
1:A:148:LEU:HD11	1:A:413:VAL:HG21	1.93	0.51
1:B:82:ALA:HB2	1:B:263:ILE:HD11	1.93	0.51
1:A:103:LEU:HD21	1:A:237:MET:CG	2.40	0.51
1:A:181:LEU:HD22	1:A:437:LEU:HD12	1.93	0.50
1:A:260:THR:HA	1:A:263:ILE:HG12	1.93	0.50
1:A:253:ASN:O	1:A:257:GLN:HG2	2.11	0.50
1:B:426:HIS:CE1	1:B:427:THR:HG23	2.47	0.50
1:A:82:ALA:HB2	1:A:263:ILE:HD11	1.93	0.50

Continued on next page...

Continued from previous page...

Atom-1	Atom-2	Interatomic distance (Å)	Clash overlap (Å)
1:A:23:ASP:HB2	5:A:2011:HOH:O	2.11	0.49
1:B:39:ILE:HA	1:B:51:TYR:O	2.12	0.49
1:B:66:ARG:HG2	5:B:2156:HOH:O	2.12	0.49
1:B:434:LYS:HB2	1:B:442:GLU:HB2	1.94	0.49
1:B:391:LYS:NZ	1:B:395:ASN:HD22	2.11	0.49
1:B:391:LYS:HZ3	1:B:395:ASN:HD22	1.61	0.48
1:A:56:ARG:NH2	1:A:342:GLY:O	2.45	0.48
1:B:110:GLN:HG2	5:B:2058:HOH:O	2.13	0.48
1:B:23:ASP:HB3	1:B:24:LYS:HG3	1.96	0.48
1:A:81:PHE:HB3	1:A:209:ILE:HG12	1.94	0.48
1:B:5:MET:SD	1:B:50:ARG:HG2	2.54	0.48
1:A:62:CYS:SG	1:A:391:LYS:HE2	2.55	0.47
1:A:424:GLU:OE1	1:A:449:LYS:NZ	2.30	0.47
1:A:367:TRP:HB2	1:A:371:VAL:HG12	1.96	0.47
1:B:195:ASP:O	1:B:197:ALA:N	2.48	0.47
1:B:198:TYR:O	1:B:202:LYS:HG3	2.15	0.46
1:A:17:LEU:HB3	1:A:18:PRO:HD3	1.96	0.46
1:B:323:ARG:HA	1:B:361:HIS:CD2	2.50	0.46
1:B:13:GLU:H	1:B:13:GLU:HG3	1.06	0.46
1:A:60:GLU:CD	1:A:66:ARG:HH12	2.19	0.46
1:B:130:TRP:CZ2	1:B:139:ILE:HG21	2.51	0.46
1:A:120:VAL:HG11	1:A:302:VAL:HG13	1.98	0.45
1:A:7:GLN:HG3	1:A:8:PRO:HD2	1.98	0.45
1:B:82:ALA:HB2	1:B:263:ILE:CD1	2.46	0.45
1:A:218:LYS:HE3	1:A:222:ASP:OD2	2.17	0.45
1:B:49:THR:HG22	5:B:2025:HOH:O	2.16	0.45
1:B:14:LEU:O	1:B:17:LEU:HB2	2.17	0.45
1:B:361:HIS:CE1	1:B:390:PHE:HA	2.52	0.45
1:B:268:THR:HB	2:B:1456:HEM:C3B	2.52	0.44
1:B:1:THR:N	5:B:2001:HOH:O	2.43	0.44
1:A:95:ASN:HD22	1:A:95:ASN:HA	1.62	0.44
1:A:272:LEU:HD13	1:A:322:LEU:HG	1.98	0.44
1:A:301:PRO:HD2	5:A:2166:HOH:O	2.17	0.44
1:B:160:TYR:OH	1:B:171:HIS:HE1	2.00	0.44
1:B:124:VAL:O	1:B:128:GLN:HG3	2.17	0.44
1:B:336:LYS:O	1:B:349:LYS:HE2	2.17	0.44
1:B:62:CYS:SG	1:B:391:LYS:HE2	2.57	0.44
1:B:409:GLU:O	1:B:413:VAL:HG23	2.17	0.44
1:A:38:GLU:HB2	1:A:54:SER:HB3	2.01	0.43
1:B:449:LYS:H	1:B:449:LYS:HG2	1.64	0.43
1:B:278:TYR:HA	1:B:444:PHE:CZ	2.53	0.42

Continued on next page...

Continued from previous page...

Atom-1	Atom-2	Interatomic distance (Å)	Clash overlap (Å)
1:A:290:ALA:HB1	1:A:418:LEU:HD13	2.01	0.42
1:A:388:HIS:CD2	1:A:391:LYS:HZ3	2.28	0.42
1:A:450:SER:OG	1:A:452:LYS:HD3	2.20	0.42
1:B:11:PHE:O	1:B:14:LEU:HB2	2.19	0.42
1:A:130:TRP:CZ2	1:A:139:ILE:HG21	2.54	0.42
1:B:280:LEU:HD22	1:B:287:LEU:HA	2.02	0.42
1:A:434:LYS:HB2	1:A:442:GLU:HB2	2.02	0.42
1:B:102:ILE:O	1:B:105:PRO:HD2	2.20	0.42
1:B:1:THR:HG23	5:B:2001:HOH:O	2.19	0.42
1:B:171:HIS:HD2	1:B:173:PHE:N	2.07	0.42
1:B:18:PRO:HA	3:B:1460:PEG:H22	2.01	0.42
1:A:286:VAL:HG11	1:A:374:PHE:HE2	1.84	0.41
1:A:5:MET:HG2	1:A:41:LYS:HB2	2.02	0.41
1:B:388:HIS:HD2	1:B:391:LYS:HZ2	1.64	0.41
1:A:309:LYS:HA	1:A:309:LYS:HD2	1.84	0.41
1:A:66:ARG:NH2	1:A:340:VAL:O	2.53	0.41
1:A:136:ASP:HA	5:A:2236:HOH:O	2.19	0.41
1:B:393:PHE:HB3	1:B:400:CYS:HB3	2.03	0.41
1:A:31:LYS:HZ2	3:A:1457:PEG:H42	1.85	0.41
1:B:370:ASP:HB2	1:B:373:GLU:HG3	2.02	0.41
1:A:329:PRO:O	1:A:358:PRO:HD3	2.21	0.40
1:A:368:GLY:O	1:A:371:VAL:HG13	2.21	0.40
1:B:173:PHE:CD1	1:B:212:MET:HA	2.56	0.40
1:A:185:MET:HB3	1:A:437:LEU:CD2	2.51	0.40
1:A:60:GLU:HG2	1:A:66:ARG:NH1	2.36	0.40
1:A:163:ASN:O	1:A:167:ARG:HD2	2.21	0.40
1:A:453:ILE:HA	1:A:454:PRO:HD2	1.86	0.40

There are no symmetry-related clashes.

5.3 Torsion angles [i](#)

5.3.1 Protein backbone [i](#)

In the following table, the Percentiles column shows the percent Ramachandran outliers of the chain as a percentile score with respect to all X-ray entries followed by that with respect to entries of similar resolution.

The Analysed column shows the number of residues for which the backbone conformation was analysed, and the total number of residues.

Mol	Chain	Analysed	Favoured	Allowed	Outliers	Percentiles	
1	A	449/455 (99%)	439 (98%)	10 (2%)	0	100	100
1	B	446/455 (98%)	430 (96%)	15 (3%)	1 (0%)	47	49
All	All	895/910 (98%)	869 (97%)	25 (3%)	1 (0%)	51	54

All (1) Ramachandran outliers are listed below:

Mol	Chain	Res	Type
1	B	196	PRO

5.3.2 Protein sidechains [i](#)

In the following table, the Percentiles column shows the percent sidechain outliers of the chain as a percentile score with respect to all X-ray entries followed by that with respect to entries of similar resolution.

The Analysed column shows the number of residues for which the sidechain conformation was analysed, and the total number of residues.

Mol	Chain	Analysed	Rotameric	Outliers	Percentiles	
1	A	397/399 (100%)	383 (96%)	14 (4%)	36	38
1	B	395/399 (99%)	382 (97%)	13 (3%)	38	40
All	All	792/798 (99%)	765 (97%)	27 (3%)	37	39

All (27) residues with a non-rotameric sidechain are listed below:

Mol	Chain	Res	Type
1	A	4	GLU
1	A	41	LYS
1	A	52	LEU
1	A	92	HIS
1	A	94	LYS
1	A	95	ASN
1	A	110	GLN
1	A	113	LYS
1	A	158	PHE
1	A	185	MET
1	A	247	GLU
1	A	263	ILE
1	A	306	LYS
1	A	430	GLU
1	B	13	GLU

Continued on next page...

Continued from previous page...

Mol	Chain	Res	Type
1	B	17	LEU
1	B	20	LEU
1	B	23	ASP
1	B	47	ARG
1	B	56	ARG
1	B	59	LYS
1	B	136	ASP
1	B	182	ASP
1	B	231	ASP
1	B	263	ILE
1	B	409	GLU
1	B	449	LYS

Sometimes sidechains can be flipped to improve hydrogen bonding and reduce clashes. All (24) such sidechains are listed below:

Mol	Chain	Res	Type
1	A	21	ASN
1	A	95	ASN
1	A	100	HIS
1	A	109	GLN
1	A	110	GLN
1	A	128	GLN
1	A	159	ASN
1	A	201	ASN
1	A	236	HIS
1	A	319	ASN
1	A	388	HIS
1	A	395	ASN
1	A	426	HIS
1	B	95	ASN
1	B	100	HIS
1	B	128	GLN
1	B	171	HIS
1	B	201	ASN
1	B	319	ASN
1	B	361	HIS
1	B	388	HIS
1	B	395	ASN
1	B	403	GLN
1	B	426	HIS

5.3.3 RNA [i](#)

There are no RNA molecules in this entry.

5.4 Non-standard residues in protein, DNA, RNA chains [i](#)

There are no non-standard protein/DNA/RNA residues in this entry.

5.5 Carbohydrates [i](#)

There are no monosaccharides in this entry.

5.6 Ligand geometry [i](#)

Of 8 ligands modelled in this entry, 1 is monoatomic - leaving 7 for Mogul analysis.

In the following table, the Counts columns list the number of bonds (or angles) for which Mogul statistics could be retrieved, the number of bonds (or angles) that are observed in the model and the number of bonds (or angles) that are defined in the Chemical Component Dictionary. The Link column lists molecule types, if any, to which the group is linked. The Z score for a bond length (or angle) is the number of standard deviations the observed value is removed from the expected value. A bond length (or angle) with $|Z| > 2$ is considered an outlier worth inspection. RMSZ is the root-mean-square of all Z scores of the bond lengths (or angles).

Mol	Type	Chain	Res	Link	Bond lengths			Bond angles		
					Counts	RMSZ	# Z > 2	Counts	RMSZ	# Z > 2
2	HEM	B	1456	1	41,50,50	1.90	8 (19%)	45,82,82	1.96	12 (26%)
3	PEG	A	1458	-	6,6,6	0.69	0	5,5,5	0.39	0
2	HEM	A	1456	1	41,50,50	1.98	10 (24%)	45,82,82	1.84	12 (26%)
3	PEG	A	1457	-	6,6,6	0.50	0	5,5,5	0.57	0
3	PEG	B	1458	-	6,6,6	0.40	0	5,5,5	0.27	0
3	PEG	B	1459	-	6,6,6	0.60	0	5,5,5	0.30	0
3	PEG	B	1460	-	6,6,6	0.58	0	5,5,5	0.51	0

In the following table, the Chirals column lists the number of chiral outliers, the number of chiral centers analysed, the number of these observed in the model and the number defined in the Chemical Component Dictionary. Similar counts are reported in the Torsion and Rings columns. '-' means no outliers of that kind were identified.

Mol	Type	Chain	Res	Link	Chirals	Torsions	Rings
2	HEM	B	1456	1	-	2/12/54/54	-
3	PEG	A	1458	-	-	3/4/4/4	-

Continued on next page...

Continued from previous page...

Mol	Type	Chain	Res	Link	Chirals	Torsions	Rings
2	HEM	A	1456	1	-	2/12/54/54	-
3	PEG	A	1457	-	-	2/4/4/4	-
3	PEG	B	1458	-	-	2/4/4/4	-
3	PEG	B	1459	-	-	0/4/4/4	-
3	PEG	B	1460	-	-	2/4/4/4	-

All (18) bond length outliers are listed below:

Mol	Chain	Res	Type	Atoms	Z	Observed(Å)	Ideal(Å)
2	B	1456	HEM	C3D-C2D	7.36	1.52	1.36
2	A	1456	HEM	C3D-C2D	7.06	1.51	1.36
2	A	1456	HEM	FE-ND	4.01	2.16	1.96
2	B	1456	HEM	C3C-C2C	-3.84	1.35	1.40
2	B	1456	HEM	C3C-CAC	3.65	1.55	1.47
2	A	1456	HEM	C3C-C2C	-3.39	1.35	1.40
2	A	1456	HEM	C3C-CAC	3.23	1.54	1.47
2	A	1456	HEM	CAB-C3B	2.96	1.55	1.47
2	A	1456	HEM	CAA-C2A	2.93	1.56	1.52
2	B	1456	HEM	CAB-C3B	2.69	1.54	1.47
2	B	1456	HEM	CAA-C2A	2.59	1.55	1.52
2	B	1456	HEM	FE-ND	2.43	2.08	1.96
2	A	1456	HEM	CMC-C2C	2.42	1.57	1.51
2	A	1456	HEM	C2C-C1C	2.39	1.48	1.42
2	A	1456	HEM	CMD-C2D	2.18	1.55	1.50
2	A	1456	HEM	CMB-C2B	2.17	1.55	1.50
2	B	1456	HEM	CMB-C2B	2.04	1.55	1.50
2	B	1456	HEM	C3B-C2B	-2.01	1.33	1.37

All (24) bond angle outliers are listed below:

Mol	Chain	Res	Type	Atoms	Z	Observed(°)	Ideal(°)
2	B	1456	HEM	C4D-ND-C1D	7.08	112.39	105.07
2	A	1456	HEM	C4D-ND-C1D	6.02	111.29	105.07
2	A	1456	HEM	C1B-NB-C4B	3.68	108.87	105.07
2	B	1456	HEM	CAD-CBD-CGD	-3.23	106.65	113.60
2	A	1456	HEM	C4C-CHD-C1D	3.12	126.67	122.56
2	B	1456	HEM	CMC-C2C-C3C	3.10	130.48	124.68
2	B	1456	HEM	CBD-CAD-C3D	-3.09	104.03	112.63
2	B	1456	HEM	CMA-C3A-C4A	-3.09	123.72	128.46
2	B	1456	HEM	CHA-C4D-ND	3.07	128.17	124.38
2	A	1456	HEM	C4A-C3A-C2A	3.01	109.09	107.00

Continued on next page...

Continued from previous page...

Mol	Chain	Res	Type	Atoms	Z	Observed(°)	Ideal(°)
2	B	1456	HEM	C4C-CHD-C1D	3.01	126.53	122.56
2	B	1456	HEM	C1B-NB-C4B	2.90	108.07	105.07
2	A	1456	HEM	C2C-C3C-C4C	2.74	108.81	106.90
2	A	1456	HEM	CAD-CBD-CGD	-2.65	107.91	113.60
2	B	1456	HEM	CHC-C4B-NB	2.62	127.28	124.43
2	A	1456	HEM	C4B-CHC-C1C	2.52	125.89	122.56
2	A	1456	HEM	CBA-CAA-C2A	-2.51	108.33	112.62
2	A	1456	HEM	CMA-C3A-C4A	-2.47	124.66	128.46
2	B	1456	HEM	C3D-C4D-ND	-2.16	107.76	110.17
2	B	1456	HEM	CMA-C3A-C2A	2.09	128.88	124.94
2	A	1456	HEM	CHA-C4D-ND	2.07	126.94	124.38
2	A	1456	HEM	C4B-C3B-C2B	2.07	108.76	107.11
2	A	1456	HEM	CHC-C4B-NB	2.04	126.65	124.43
2	B	1456	HEM	O1D-CGD-CBD	-2.04	116.53	123.08

There are no chirality outliers.

All (13) torsion outliers are listed below:

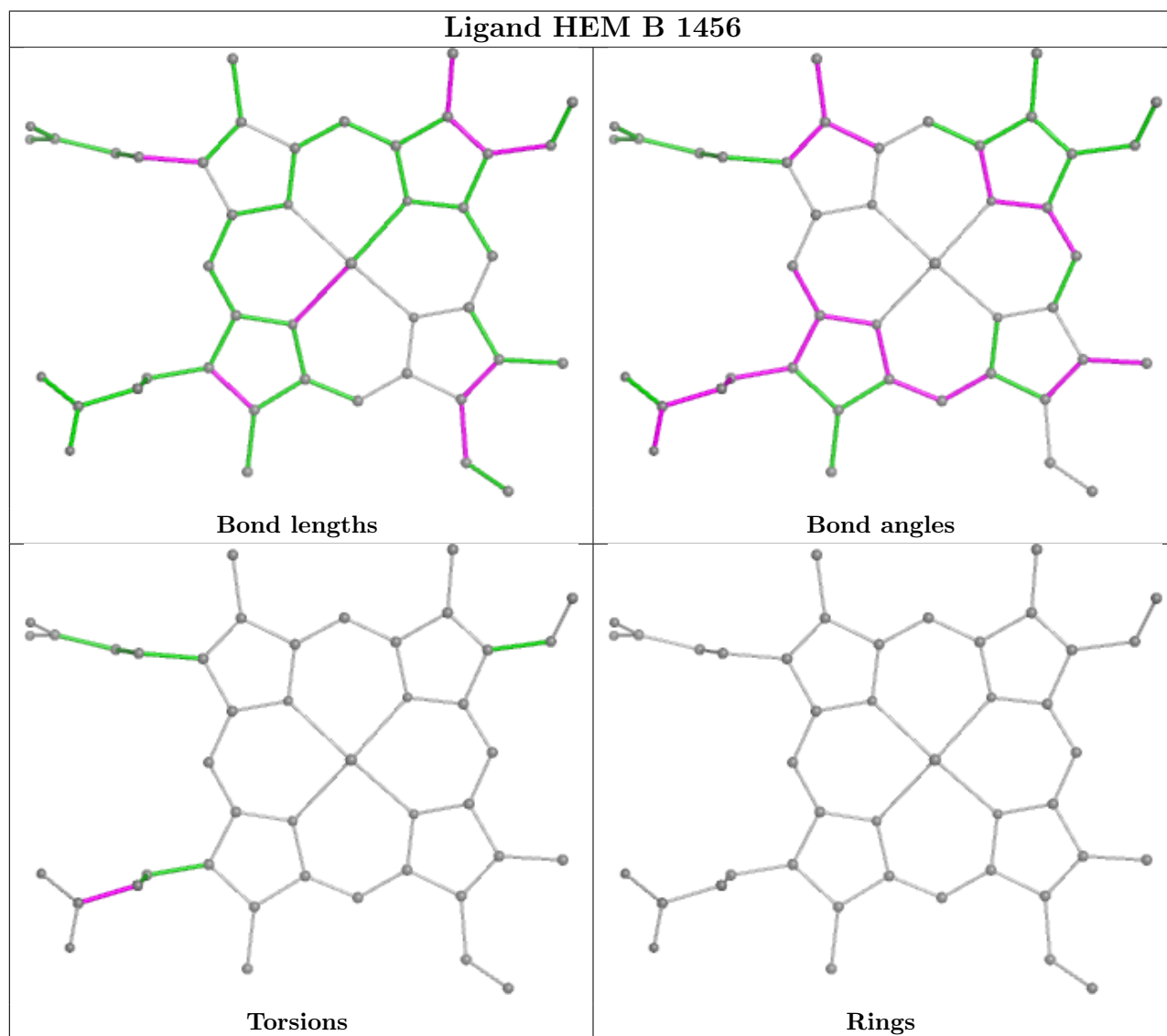
Mol	Chain	Res	Type	Atoms
3	A	1458	PEG	O2-C3-C4-O4
3	B	1458	PEG	O1-C1-C2-O2
3	A	1458	PEG	O1-C1-C2-O2
3	B	1460	PEG	C4-C3-O2-C2
3	A	1457	PEG	C4-C3-O2-C2
3	B	1458	PEG	C4-C3-O2-C2
3	B	1460	PEG	O1-C1-C2-O2
2	B	1456	HEM	CAD-CBD-CGD-O1D
2	A	1456	HEM	CAD-CBD-CGD-O1D
2	B	1456	HEM	CAD-CBD-CGD-O2D
2	A	1456	HEM	CAD-CBD-CGD-O2D
3	A	1458	PEG	C4-C3-O2-C2
3	A	1457	PEG	O2-C3-C4-O4

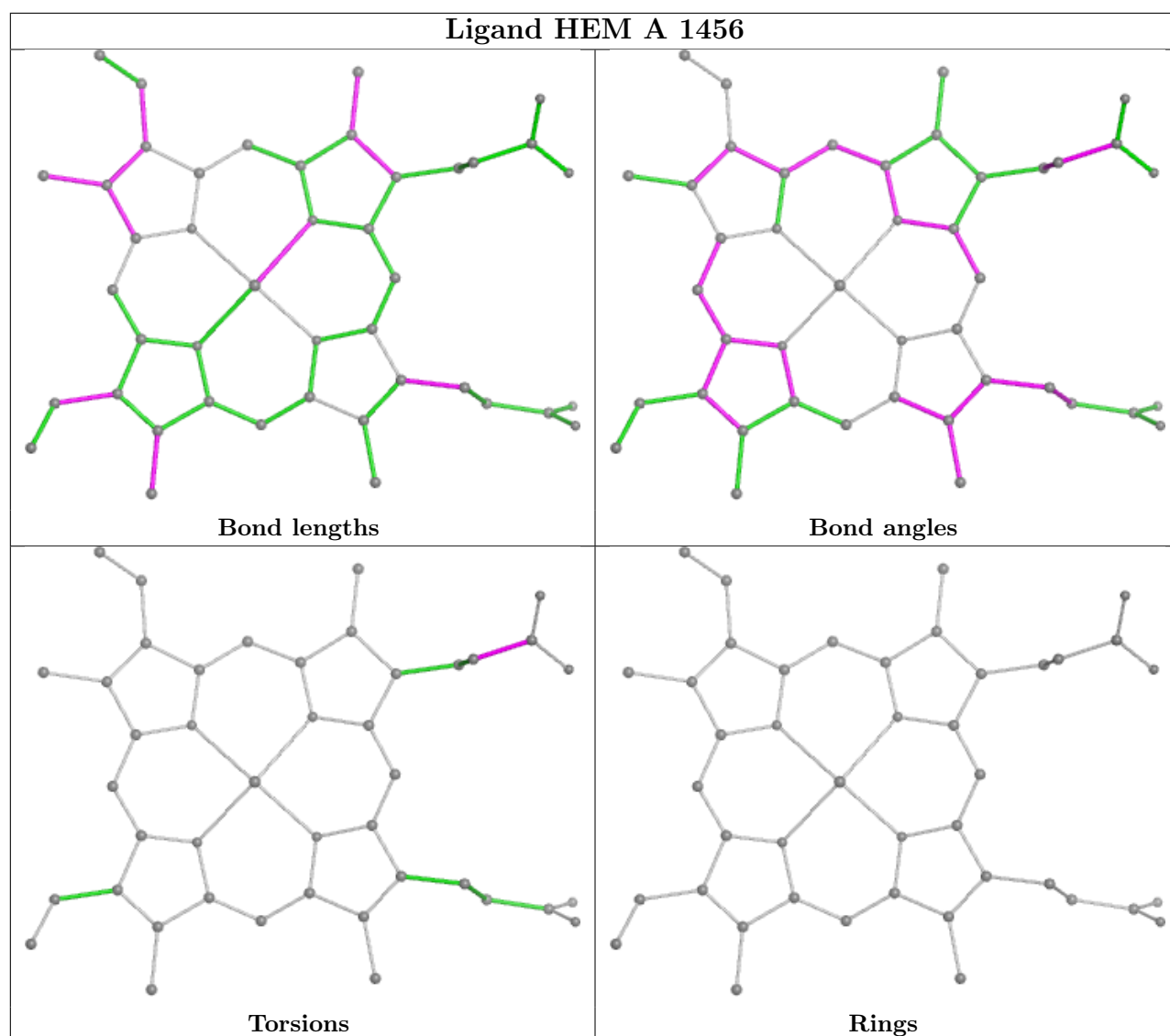
There are no ring outliers.

3 monomers are involved in 7 short contacts:

Mol	Chain	Res	Type	Clashes	Symm-Clashes
2	B	1456	HEM	1	0
3	A	1457	PEG	2	0
3	B	1460	PEG	4	0

The following is a two-dimensional graphical depiction of Mogul quality analysis of bond lengths, bond angles, torsion angles, and ring geometry for all instances of the Ligand of Interest. In addition, ligands with molecular weight > 250 and outliers as shown on the validation Tables will also be included. For torsion angles, if less than 5% of the Mogul distribution of torsion angles is within 10 degrees of the torsion angle in question, then that torsion angle is considered an outlier. Any bond that is central to one or more torsion angles identified as an outlier by Mogul will be highlighted in the graph. For rings, the root-mean-square deviation (RMSD) between the ring in question and similar rings identified by Mogul is calculated over all ring torsion angles. If the average RMSD is greater than 60 degrees and the minimal RMSD between the ring in question and any Mogul-identified rings is also greater than 60 degrees, then that ring is considered an outlier. The outliers are highlighted in purple. The color gray indicates Mogul did not find sufficient equivalents in the CSD to analyse the geometry.





5.7 Other polymers [i](#)

There are no such residues in this entry.

5.8 Polymer linkage issues [i](#)

There are no chain breaks in this entry.

6 Fit of model and data

6.1 Protein, DNA and RNA chains

In the following table, the column labelled ‘#RSRZ > 2’ contains the number (and percentage) of RSRZ outliers, followed by percent RSRZ outliers for the chain as percentile scores relative to all X-ray entries and entries of similar resolution. The OWAB column contains the minimum, median, 95th percentile and maximum values of the occupancy-weighted average B-factor per residue. The column labelled ‘Q < 0.9’ lists the number of (and percentage) of residues with an average occupancy less than 0.9.

Mol	Chain	Analysed	<RSRZ>	#RSRZ>2	OWAB(Å ²)	Q<0.9
1	A	452/455 (99%)	-0.22	7 (1%) 73 77	16, 24, 39, 59	0
1	B	450/455 (98%)	-0.04	18 (4%) 38 44	16, 28, 50, 69	0
All	All	902/910 (99%)	-0.13	25 (2%) 53 59	16, 25, 43, 69	0

All (25) RSRZ outliers are listed below:

Mol	Chain	Res	Type	RSRZ
1	A	1	THR	7.4
1	B	1	THR	5.6
1	A	2	ILE	5.3
1	B	191	ALA	5.2
1	B	196	PRO	4.5
1	B	197	ALA	4.1
1	B	2	ILE	3.8
1	B	195	ASP	3.4
1	B	169	GLN	3.3
1	B	4	GLU	3.1
1	B	198	TYR	3.0
1	B	192	ASN	2.9
1	B	136	ASP	2.9
1	A	242	ASP	2.7
1	B	455	LEU	2.5
1	B	193	PRO	2.5
1	A	136	ASP	2.5
1	B	242	ASP	2.4
1	A	246	GLY	2.4
1	A	13	GLU	2.4
1	B	218	LYS	2.4
1	B	194	ASP	2.3
1	B	110	GLN	2.3
1	B	248	PRO	2.2

Continued on next page...

Continued from previous page...

Mol	Chain	Res	Type	RSRZ
1	A	192	ASN	2.1

6.2 Non-standard residues in protein, DNA, RNA chains [\(i\)](#)

There are no non-standard protein/DNA/RNA residues in this entry.

6.3 Carbohydrates [\(i\)](#)

There are no monosaccharides in this entry.

6.4 Ligands [\(i\)](#)

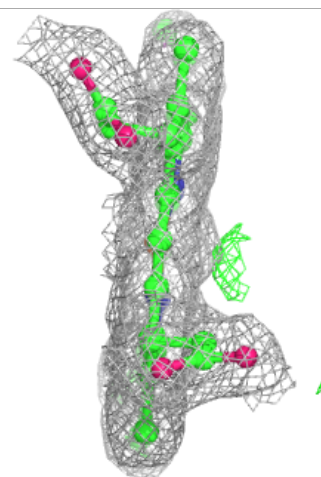
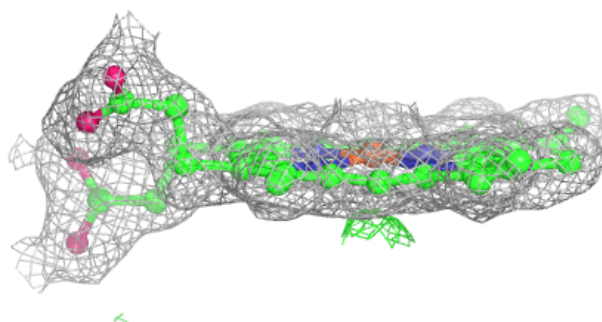
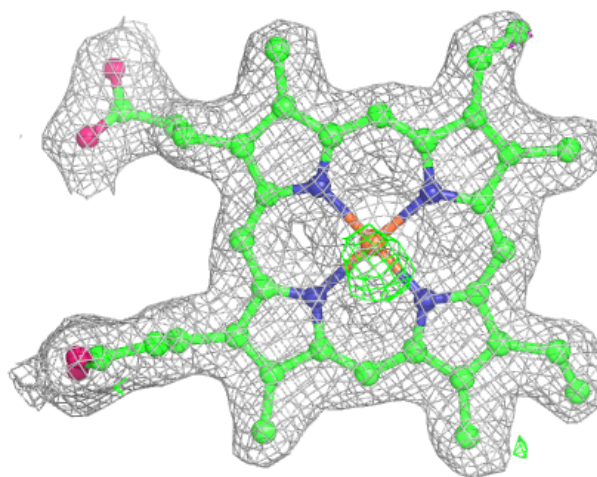
In the following table, the Atoms column lists the number of modelled atoms in the group and the number defined in the chemical component dictionary. The B-factors column lists the minimum, median, 95th percentile and maximum values of B factors of atoms in the group. The column labelled 'Q< 0.9' lists the number of atoms with occupancy less than 0.9.

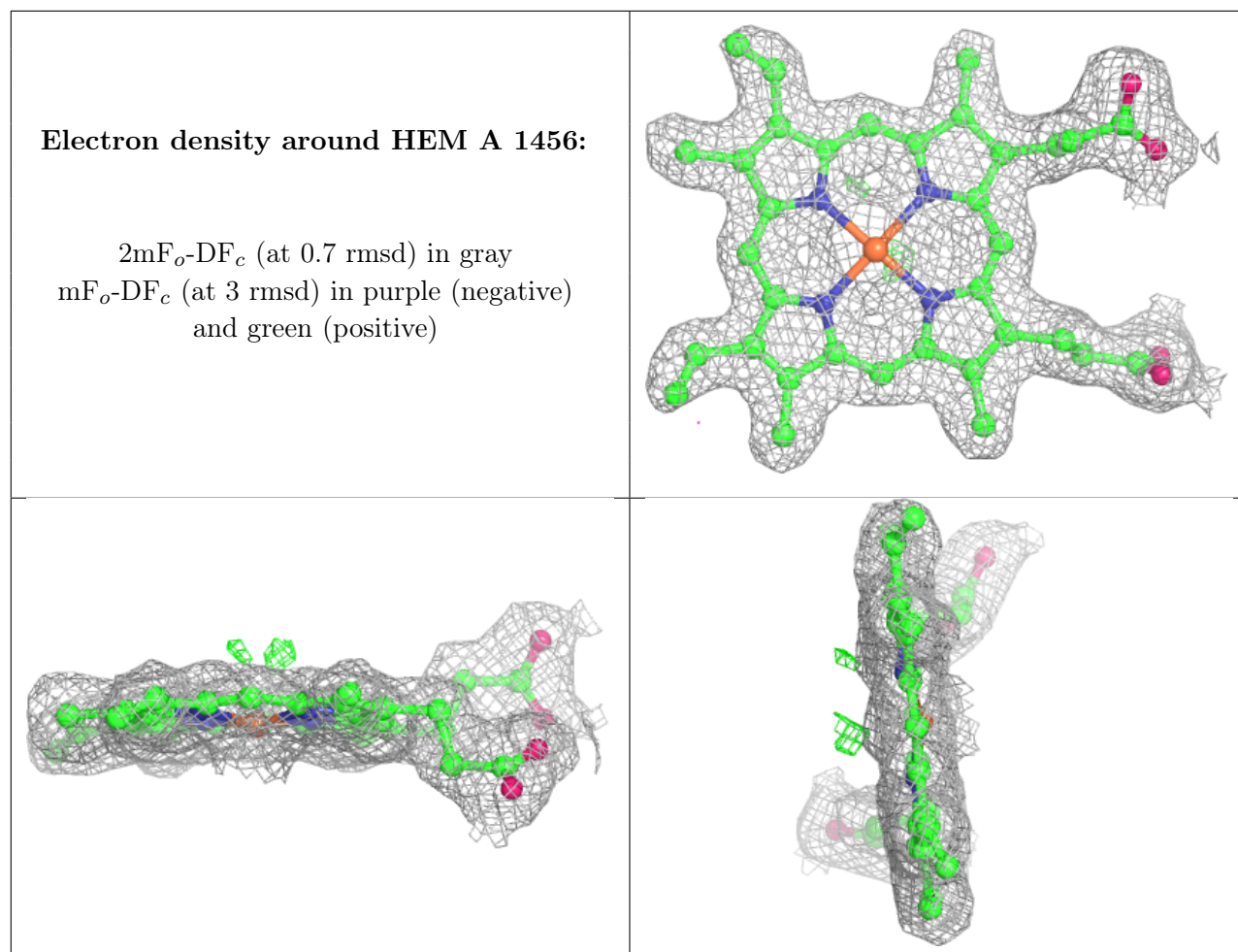
Mol	Type	Chain	Res	Atoms	RSCC	RSR	B-factors(\AA^2)	Q<0.9
3	PEG	A	1458	7/7	0.80	0.18	42,44,45,46	0
3	PEG	B	1460	7/7	0.84	0.18	44,46,47,48	0
3	PEG	B	1459	7/7	0.86	0.14	43,45,47,48	0
3	PEG	A	1457	7/7	0.94	0.10	33,35,36,39	0
3	PEG	B	1458	7/7	0.94	0.09	31,33,36,37	0
2	HEM	B	1456	43/43	0.98	0.09	13,17,20,26	0
4	ZN	B	1457	1/1	0.98	0.04	40,40,40,40	0
2	HEM	A	1456	43/43	0.99	0.08	13,16,18,22	0

The following is a graphical depiction of the model fit to experimental electron density of all instances of the Ligand of Interest. In addition, ligands with molecular weight > 250 and outliers as shown on the geometry validation Tables will also be included. Each fit is shown from different orientation to approximate a three-dimensional view.

Electron density around HEM B 1456:

$2mF_o-DF_c$ (at 0.7 rmsd) in gray
 mF_o-DF_c (at 3 rmsd) in purple (negative)
and green (positive)





6.5 Other polymers [i](#)

There are no such residues in this entry.