



Full wwPDB X-ray Structure Validation Report ⓘ

Jun 13, 2024 – 08:22 AM EDT

PDB ID : 4J4V
Title : Pentameric SFTSVN with suramin
Authors : Jiao, L.; Ouyang, S.; Liang, M.; Niu, F.; Shaw, N.; Wu, W.; Ding, W.; Jin, C.;
Zhu, Y.; Zhang, F.; Wang, T.; Li, C.; Zuo, X.; Luan, C.H.; Li, D.; Liu, Z.J.
Deposited on : 2013-02-07
Resolution : 2.30 Å(reported)

This is a Full wwPDB X-ray Structure Validation Report for a publicly released PDB entry.

We welcome your comments at validation@mail.wwpdb.org

A user guide is available at

<https://www.wwpdb.org/validation/2017/XrayValidationReportHelp>

with specific help available everywhere you see the ⓘ symbol.

The types of validation reports are described at

<http://www.wwpdb.org/validation/2017/FAQs#types>.

The following versions of software and data (see [references ⓘ](#)) were used in the production of this report:

MolProbity : 4.02b-467
Mogul : 2022.3.0, CSD as543be (2022)
Xtriage (Phenix) : 1.20.1
EDS : 2.36.2
buster-report : 1.1.7 (2018)
Percentile statistics : 20191225.v01 (using entries in the PDB archive December 25th 2019)
Refmac : 5.8.0158
CCP4 : 7.0.044 (Gargrove)
Ideal geometry (proteins) : Engh & Huber (2001)
Ideal geometry (DNA, RNA) : Parkinson et al. (1996)
Validation Pipeline (wwPDB-VP) : 2.36.2

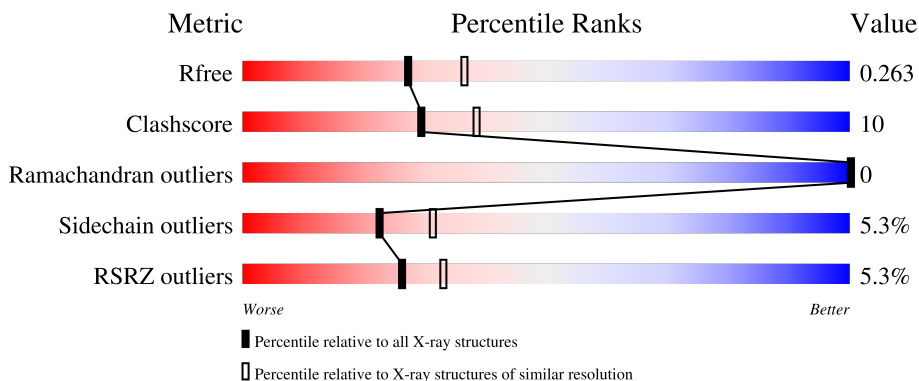
1 Overall quality at a glance

The following experimental techniques were used to determine the structure:

X-RAY DIFFRACTION

The reported resolution of this entry is 2.30 Å.

Percentile scores (ranging between 0-100) for global validation metrics of the entry are shown in the following graphic. The table shows the number of entries on which the scores are based.



Metric	Whole archive (#Entries)	Similar resolution (#Entries, resolution range(Å))
R_{free}	130704	5042 (2.30-2.30)
Clashscore	141614	5643 (2.30-2.30)
Ramachandran outliers	138981	5575 (2.30-2.30)
Sidechain outliers	138945	5575 (2.30-2.30)
RSRZ outliers	127900	4938 (2.30-2.30)

The table below summarises the geometric issues observed across the polymeric chains and their fit to the electron density. The red, orange, yellow and green segments of the lower bar indicate the fraction of residues that contain outliers for ≥ 3 , 2, 1 and 0 types of geometric quality criteria respectively. A grey segment represents the fraction of residues that are not modelled. The numeric value for each fraction is indicated below the corresponding segment, with a dot representing fractions $\leq 5\%$. The upper red bar (where present) indicates the fraction of residues that have poor fit to the electron density. The numeric value is given above the bar.

Mol	Chain	Length	Quality of chain
1	A	248	 2% 81% 15% ..
1	B	248	 6% 74% 21% ..
1	C	248	 6% 74% 21% ..
1	D	248	 6% 79% 19% ..
1	E	248	 6% 77% 19% ..

2 Entry composition [i](#)

There are 3 unique types of molecules in this entry. The entry contains 9804 atoms, of which 0 are hydrogens and 0 are deuteriums.

In the tables below, the ZeroOcc column contains the number of atoms modelled with zero occupancy, the AltConf column contains the number of residues with at least one atom in alternate conformation and the Trace column contains the number of residues modelled with at most 2 atoms.

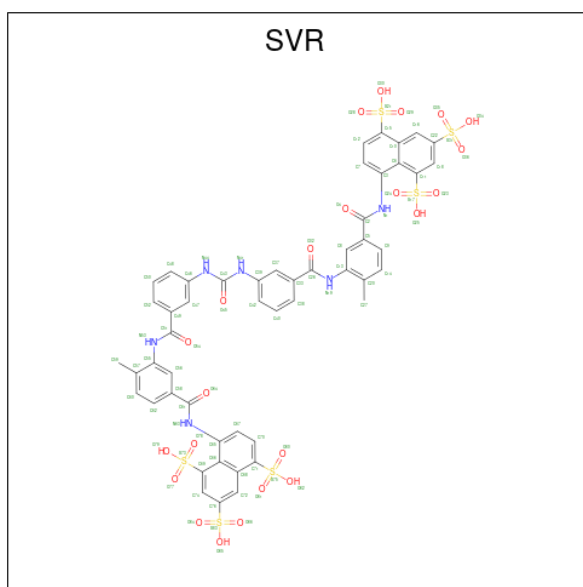
- Molecule 1 is a protein called Nucleocapsid protein.

Mol	Chain	Residues	Atoms					ZeroOcc	AltConf	Trace
			Total	C	N	O	S			
1	A	244	1887	1206	321	350	10	0	0	0
1	B	240	1855	1187	313	346	9	0	0	0
1	C	245	1895	1211	322	351	11	0	0	0
1	E	240	1852	1184	313	346	9	0	0	0
1	D	246	1900	1214	323	352	11	0	0	0

There are 15 discrepancies between the modelled and reference sequences:

Chain	Residue	Modelled	Actual	Comment	Reference
A	-2	SER	-	expression tag	UNP I6WJ72
A	-1	ASN	-	expression tag	UNP I6WJ72
A	0	ALA	-	expression tag	UNP I6WJ72
B	-2	SER	-	expression tag	UNP I6WJ72
B	-1	ASN	-	expression tag	UNP I6WJ72
B	0	ALA	-	expression tag	UNP I6WJ72
C	-2	SER	-	expression tag	UNP I6WJ72
C	-1	ASN	-	expression tag	UNP I6WJ72
C	0	ALA	-	expression tag	UNP I6WJ72
E	-2	SER	-	expression tag	UNP I6WJ72
E	-1	ASN	-	expression tag	UNP I6WJ72
E	0	ALA	-	expression tag	UNP I6WJ72
D	-2	SER	-	expression tag	UNP I6WJ72
D	-1	ASN	-	expression tag	UNP I6WJ72
D	0	ALA	-	expression tag	UNP I6WJ72

- Molecule 2 is 8,8'-[CARBONYLBIS[IMINO-3,1-PHENYLENECARBONYLIMINO(4-METHYL-3,1-PHENYLENE)CARBONYLIMINO]]BIS-1,3,5-NAPHTHALENETRISULFONIC ACID (three-letter code: SVR) (formula: C₅₁H₄₀N₆O₂₃S₆).



Mol	Chain	Residues	Atoms					ZeroOcc	AltConf
			Total	C	N	O	S		
2	A	1	Total 33	C 18	N 2	O 10	S 3	0	0
2	B	1	Total 33	C 18	N 2	O 10	S 3	0	0
2	C	1	Total 33	C 18	N 2	O 10	S 3	0	0
2	E	1	Total 33	C 18	N 2	O 10	S 3	0	0
2	D	1	Total 33	C 18	N 2	O 10	S 3	0	0

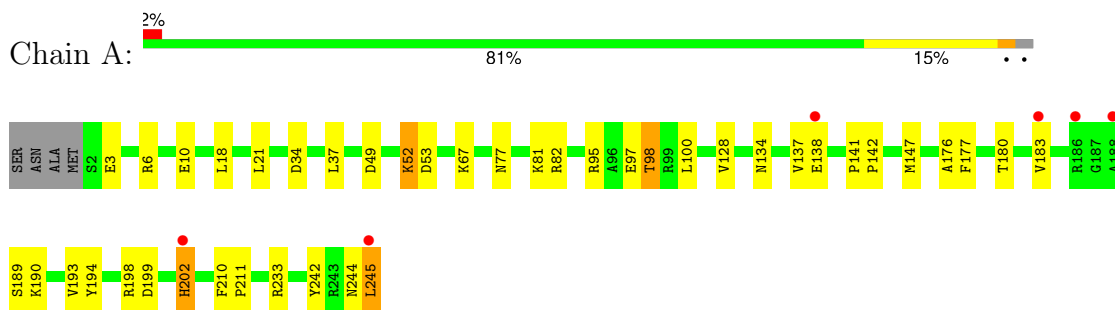
- Molecule 3 is water.

Mol	Chain	Residues	Atoms		ZeroOcc	AltConf
			Total	O		
3	A	65	Total 65	O 65	0	0
3	B	38	Total 38	O 38	0	0
3	C	31	Total 31	O 31	0	0
3	E	47	Total 47	O 47	0	0
3	D	69	Total 69	O 69	0	0

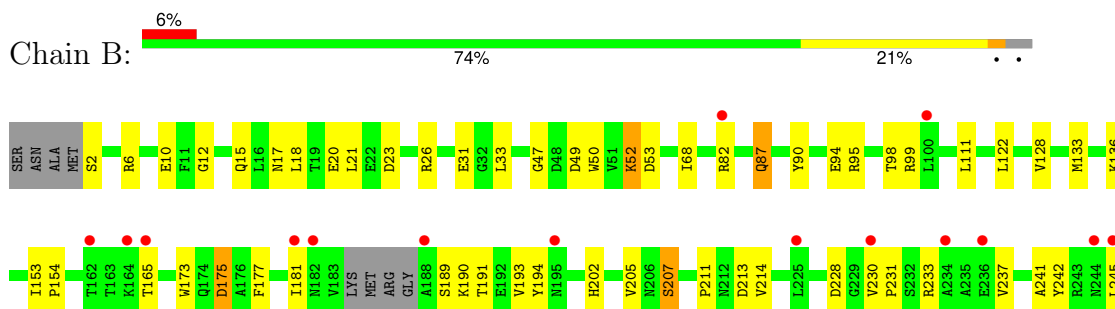
3 Residue-property plots [i](#)

These plots are drawn for all protein, RNA, DNA and oligosaccharide chains in the entry. The first graphic for a chain summarises the proportions of the various outlier classes displayed in the second graphic. The second graphic shows the sequence view annotated by issues in geometry and electron density. Residues are color-coded according to the number of geometric quality criteria for which they contain at least one outlier: green = 0, yellow = 1, orange = 2 and red = 3 or more. A red dot above a residue indicates a poor fit to the electron density ($RSRZ > 2$). Stretches of 2 or more consecutive residues without any outlier are shown as a green connector. Residues present in the sample, but not in the model, are shown in grey.

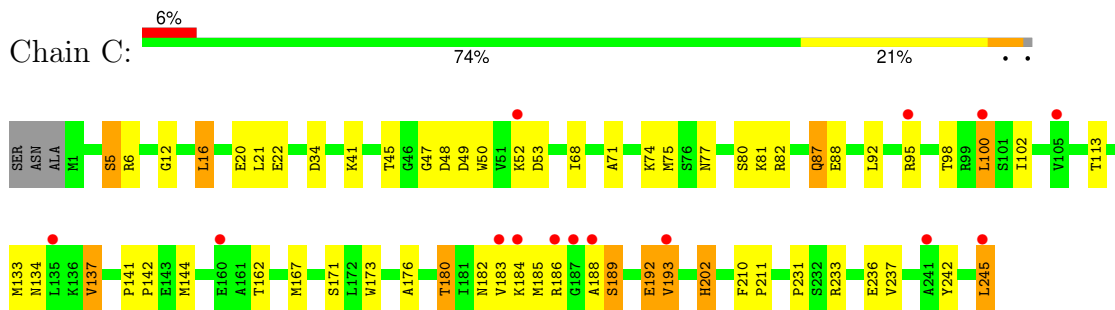
- Molecule 1: Nucleocapsid protein



- Molecule 1: Nucleocapsid protein

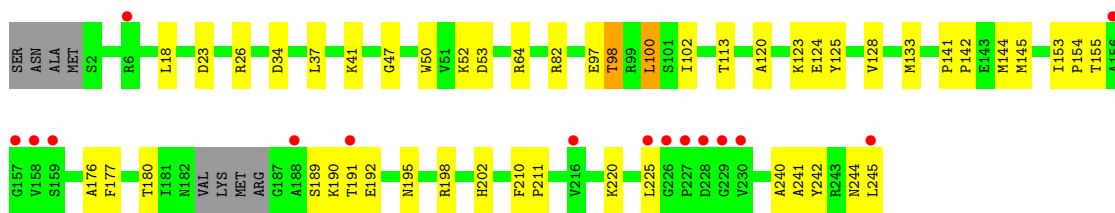


- Molecule 1: Nucleocapsid protein

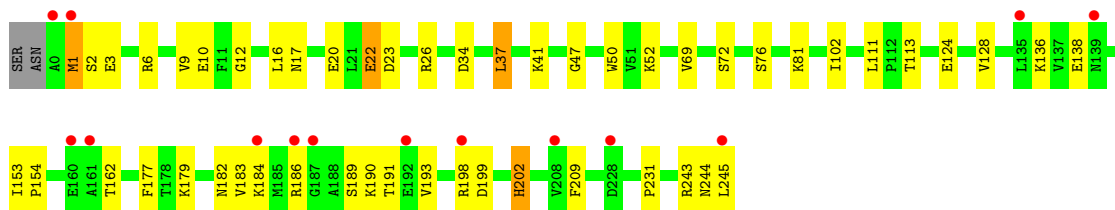
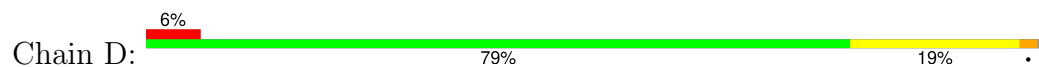


- Molecule 1: Nucleocapsid protein





- Molecule 1: Nucleocapsid protein



4 Data and refinement statistics

Property	Value	Source
Space group	C 1 2 1	Depositor
Cell constants a, b, c, α , β , γ	103.14Å 154.89Å 93.29Å 90.00° 102.12° 90.00°	Depositor
Resolution (Å)	42.72 – 2.30 42.72 – 2.30	Depositor EDS
% Data completeness (in resolution range)	96.1 (42.72-2.30) 92.0 (42.72-2.30)	Depositor EDS
R_{merge}	(Not available)	Depositor
R_{sym}	(Not available)	Depositor
$\langle I/\sigma(I) \rangle$ ¹	2.51 (at 2.32Å)	Xtriage
Refinement program	PHENIX (phenix.refine: 1.8.1_1168)	Depositor
R, R_{free}	0.223 , 0.261 0.226 , 0.263	Depositor DCC
R_{free} test set	2000 reflections (3.29%)	wwPDB-VP
Wilson B-factor (Å ²)	37.2	Xtriage
Anisotropy	0.053	Xtriage
Bulk solvent k_{sol} (e/Å ³), B_{sol} (Å ²)	0.35 , 46.8	EDS
L-test for twinning ²	$\langle L \rangle = 0.49$, $\langle L^2 \rangle = 0.32$	Xtriage
Estimated twinning fraction	No twinning to report.	Xtriage
F_o, F_c correlation	0.93	EDS
Total number of atoms	9804	wwPDB-VP
Average B, all atoms (Å ²)	51.0	wwPDB-VP

Xtriage's analysis on translational NCS is as follows: *The largest off-origin peak in the Patterson function is 4.06% of the height of the origin peak. No significant pseudotranslation is detected.*

¹Intensities estimated from amplitudes.

²Theoretical values of $\langle |L| \rangle$, $\langle L^2 \rangle$ for acentric reflections are 0.5, 0.333 respectively for untwinned datasets, and 0.375, 0.2 for perfectly twinned datasets.

5 Model quality i

5.1 Standard geometry i

Bond lengths and bond angles in the following residue types are not validated in this section: SVR

The Z score for a bond length (or angle) is the number of standard deviations the observed value is removed from the expected value. A bond length (or angle) with $|Z| > 5$ is considered an outlier worth inspection. RMSZ is the root-mean-square of all Z scores of the bond lengths (or angles).

Mol	Chain	Bond lengths		Bond angles	
		RMSZ	# Z >5	RMSZ	# Z >5
1	A	0.32	0/1925	0.52	0/2607
1	B	0.34	0/1892	0.55	0/2564
1	C	0.41	0/1933	0.62	1/2617 (0.0%)
1	D	0.38	0/1938	0.53	1/2624 (0.0%)
1	E	0.38	0/1889	0.51	0/2559
All	All	0.37	0/9577	0.55	2/12971 (0.0%)

There are no bond length outliers.

All (2) bond angle outliers are listed below:

Mol	Chain	Res	Type	Atoms	Z	Observed(°)	Ideal(°)
1	C	245	LEU	CA-CB-CG	5.75	128.52	115.30
1	D	37	LEU	CA-CB-CG	5.62	128.23	115.30

There are no chirality outliers.

There are no planarity outliers.

5.2 Too-close contacts i

In the following table, the Non-H and H(model) columns list the number of non-hydrogen atoms and hydrogen atoms in the chain respectively. The H(added) column lists the number of hydrogen atoms added and optimized by MolProbity. The Clashes column lists the number of clashes within the asymmetric unit, whereas Symm-Clashes lists symmetry-related clashes.

Mol	Chain	Non-H	H(model)	H(added)	Clashes	Symm-Clashes
1	A	1887	0	1922	30	0
1	B	1855	0	1883	35	0
1	C	1895	0	1934	49	0
1	D	1900	0	1939	35	1

Continued on next page...

Continued from previous page...

Mol	Chain	Non-H	H(model)	H(added)	Clashes	Symm-Clashes
1	E	1852	0	1877	34	0
2	A	33	0	11	1	0
2	B	33	0	11	2	0
2	C	33	0	11	2	0
2	D	33	0	11	2	0
2	E	33	0	11	3	0
3	A	65	0	0	6	0
3	B	38	0	0	8	0
3	C	31	0	0	8	1
3	D	69	0	0	8	0
3	E	47	0	0	4	0
All	All	9804	0	9610	182	1

The all-atom clashscore is defined as the number of clashes found per 1000 atoms (including hydrogen atoms). The all-atom clashscore for this structure is 10.

All (182) close contacts within the same asymmetric unit are listed below, sorted by their clash magnitude.

Atom-1	Atom-2	Interatomic distance (Å)	Clash overlap (Å)
1:C:189:SER:OG	1:C:192:GLU:CD	1.71	1.26
1:C:189:SER:OG	1:C:192:GLU:OE1	1.57	1.22
1:C:182:ASN:OD1	1:C:184:LYS:N	1.92	1.03
1:E:242:TYR:OH	3:E:444:HOH:O	1.73	1.03
1:A:198:ARG:NH2	3:A:401:HOH:O	2.02	0.93
1:C:189:SER:OG	1:C:192:GLU:OE2	1.76	0.92
1:D:202:HIS:ND1	3:D:429:HOH:O	2.04	0.89
1:C:52:LYS:NZ	1:C:53:ASP:OD1	2.06	0.88
1:C:34:ASP:OD2	3:C:419:HOH:O	1.90	0.87
1:E:190:LYS:HD2	1:E:245:LEU:HD13	1.58	0.85
1:E:52:LYS:NZ	1:E:53:ASP:OD1	2.08	0.84
1:C:236:GLU:OE2	3:C:416:HOH:O	1.97	0.82
1:C:6:ARG:NH1	3:C:426:HOH:O	2.10	0.79
1:C:189:SER:CB	1:C:192:GLU:OE1	2.31	0.78
1:B:23:ASP:OD1	1:B:26:ARG:NH2	2.16	0.78
1:A:34:ASP:OD1	3:A:451:HOH:O	2.02	0.76
1:D:69:VAL:O	1:D:72:SER:OG	2.03	0.76
1:C:48:ASP:OD1	3:C:412:HOH:O	2.03	0.76
1:C:242:TYR:OH	3:C:402:HOH:O	2.03	0.75
1:E:23:ASP:OD1	1:E:26:ARG:NH2	2.19	0.75
1:B:241:ALA:O	3:B:435:HOH:O	2.04	0.75
1:B:207:SER:O	3:B:426:HOH:O	2.04	0.74

Continued on next page...

Continued from previous page...

Atom-1	Atom-2	Interatomic distance (Å)	Clash overlap (Å)
2:E:301:SVR:O80	3:E:411:HOH:O	2.04	0.74
1:C:95:ARG:O	3:C:429:HOH:O	2.06	0.72
1:E:244:ASN:O	1:E:245:LEU:HB2	1.90	0.72
1:D:9:VAL:O	3:D:427:HOH:O	2.07	0.71
1:B:68:ILE:HG21	1:B:87:GLN:HG3	1.73	0.70
2:D:301:SVR:O80	3:D:436:HOH:O	2.07	0.70
1:B:205:VAL:O	3:B:426:HOH:O	2.09	0.70
1:B:53:ASP:OD1	1:B:82:ARG:NH2	2.24	0.69
1:B:17:ASN:HB3	1:B:20:GLU:HG2	1.76	0.68
1:B:20:GLU:OE1	3:B:420:HOH:O	2.11	0.68
1:B:165:THR:HG21	1:B:231:PRO:HG2	1.77	0.67
1:C:41:LYS:O	1:C:45:THR:HG22	1.94	0.66
1:C:71:ALA:O	1:C:74:LYS:N	2.28	0.65
1:C:88:GLU:OE1	3:C:421:HOH:O	2.12	0.65
1:C:68:ILE:HG21	1:C:87:GLN:HG3	1.78	0.65
1:C:185:MET:CE	1:C:193:VAL:HG12	2.26	0.65
1:D:3:GLU:H	1:D:3:GLU:CD	2.01	0.65
1:D:23:ASP:OD1	1:D:26:ARG:NH2	2.30	0.64
1:E:195:ASN:HA	1:E:198:ARG:HG2	1.80	0.64
1:E:52:LYS:HD2	1:E:82:ARG:NH2	2.13	0.63
1:E:41:LYS:HG2	1:E:102:ILE:HD11	1.80	0.63
1:C:162:THR:HG23	1:C:231:PRO:HD3	1.80	0.63
1:D:128:VAL:HG21	1:D:177:PHE:HA	1.81	0.63
1:C:182:ASN:OD1	1:C:184:LYS:HB2	1.99	0.62
1:C:176:ALA:O	1:C:180:THR:OG1	2.18	0.61
1:C:20:GLU:OE2	1:D:52:LYS:NZ	2.32	0.61
1:D:3:GLU:OE1	1:D:3:GLU:N	2.23	0.61
1:C:133:MET:HE3	1:C:173:TRP:CD1	2.35	0.60
1:A:98:THR:HG22	1:A:100:LEU:H	1.65	0.60
1:C:185:MET:HE2	1:C:193:VAL:HG12	1.82	0.60
1:C:52:LYS:HD2	1:C:82:ARG:HH22	1.67	0.59
1:D:34:ASP:OD2	3:D:426:HOH:O	2.17	0.59
1:D:198:ARG:NH1	1:D:199:ASP:OD1	2.36	0.59
1:C:77:ASN:O	1:C:81:LYS:HG2	2.03	0.59
1:C:189:SER:N	1:C:192:GLU:OE2	2.31	0.59
1:E:190:LYS:HZ2	1:E:245:LEU:HD22	1.68	0.59
1:D:17:ASN:HB3	1:D:20:GLU:HG2	1.84	0.59
2:E:301:SVR:S73	2:E:301:SVR:N63	2.76	0.58
1:D:190:LYS:HD2	1:D:245:LEU:HD13	1.85	0.58
1:A:3:GLU:OE1	1:A:3:GLU:N	2.36	0.57
1:C:49:ASP:OD1	1:C:52:LYS:HE3	2.03	0.57

Continued on next page...

Continued from previous page...

Atom-1	Atom-2	Interatomic distance (Å)	Clash overlap (Å)
1:A:147:MET:HB2	3:A:416:HOH:O	2.03	0.57
1:D:179:LYS:NZ	3:D:441:HOH:O	2.12	0.56
1:D:244:ASN:O	1:D:245:LEU:HB2	2.05	0.56
1:E:120:ALA:O	1:E:123:LYS:HG3	2.06	0.56
1:A:176:ALA:O	1:A:180:THR:HG23	2.06	0.56
1:C:87:GLN:HG2	1:C:92:LEU:HB2	1.86	0.56
1:B:49:ASP:OD1	1:B:52:LYS:HD2	2.06	0.56
1:E:98:THR:HG23	1:E:100:LEU:H	1.71	0.55
1:B:53:ASP:OD2	1:B:90:TYR:OH	2.11	0.55
1:E:176:ALA:O	1:E:180:THR:HG23	2.05	0.55
1:D:182:ASN:OD1	1:D:184:LYS:HB2	2.07	0.55
2:A:301:SVR:S73	2:A:301:SVR:N63	2.81	0.54
1:D:198:ARG:HG3	1:D:199:ASP:N	2.23	0.54
1:B:228:ASP:OD1	1:B:230:VAL:HG22	2.08	0.54
1:B:233:ARG:NE	3:B:427:HOH:O	2.28	0.53
1:A:128:VAL:HG21	1:A:177:PHE:HA	1.90	0.53
1:A:52:LYS:HG3	3:A:435:HOH:O	2.09	0.53
1:A:202:HIS:ND1	3:A:444:HOH:O	2.33	0.52
1:B:128:VAL:HG21	1:B:177:PHE:HA	1.91	0.52
1:E:34:ASP:OD2	3:E:426:HOH:O	2.19	0.52
1:D:136:LYS:HE2	3:D:457:HOH:O	2.10	0.52
1:A:6:ARG:O	1:A:10:GLU:HG3	2.09	0.52
1:B:133:MET:HE3	1:B:173:TRP:CD1	2.45	0.51
1:C:16:LEU:HG	1:C:21:LEU:HD11	1.91	0.51
1:E:211:PRO:HG3	1:D:1:MET:HG2	1.91	0.51
1:C:5:SER:OG	1:D:209:PHE:O	2.26	0.51
1:E:37:LEU:HD11	1:E:100:LEU:HD12	1.92	0.51
1:B:15:GLN:CD	1:B:15:GLN:H	2.12	0.51
1:C:98:THR:HG22	1:C:100:LEU:H	1.76	0.50
1:D:243:ARG:NH1	3:D:418:HOH:O	2.44	0.50
1:E:98:THR:CG2	1:E:100:LEU:H	2.25	0.49
1:A:49:ASP:OD2	1:A:52:LYS:NZ	2.44	0.49
1:A:98:THR:CG2	1:A:100:LEU:H	2.24	0.49
1:B:213:ASP:OD1	1:B:214:VAL:N	2.46	0.49
1:A:190:LYS:NZ	1:A:242:TYR:O	2.45	0.49
1:B:189:SER:O	1:B:193:VAL:HG13	2.12	0.49
1:B:6:ARG:NH1	1:B:10:GLU:HG3	2.28	0.49
1:C:52:LYS:HD2	1:C:82:ARG:NH2	2.28	0.48
1:C:134:ASN:HA	1:C:137:VAL:O	2.13	0.48
1:C:137:VAL:HG22	1:C:237:VAL:HG12	1.95	0.48
1:A:77:ASN:O	1:A:81:LYS:HG2	2.13	0.48

Continued on next page...

Continued from previous page...

Atom-1	Atom-2	Interatomic distance (Å)	Clash overlap (Å)
1:C:47:GLY:O	1:C:50:TRP:HD1	1.97	0.48
1:E:64:ARG:O	3:E:436:HOH:O	2.20	0.48
1:D:124:GLU:OE2	3:D:431:HOH:O	2.20	0.48
1:A:190:LYS:HZ3	1:A:245:LEU:HD22	1.79	0.47
1:D:41:LYS:HG2	1:D:102:ILE:HD11	1.95	0.47
1:C:95:ARG:HA	2:C:301:SVR:O84	2.13	0.47
1:E:47:GLY:O	1:E:50:TRP:HD1	1.98	0.47
1:E:128:VAL:HG21	1:E:177:PHE:HA	1.97	0.47
1:E:52:LYS:HD2	1:E:82:ARG:HH22	1.79	0.47
1:A:52:LYS:HE2	1:A:82:ARG:NH2	2.30	0.47
1:E:133:MET:HG3	1:E:145:MET:HE3	1.97	0.47
1:A:194:TYR:CZ	1:A:198:ARG:HD3	2.50	0.47
1:B:2:SER:N	3:B:425:HOH:O	2.48	0.46
1:D:1:MET:HE2	1:D:2:SER:H	1.80	0.46
1:A:95:ARG:NH1	1:A:97:GLU:OE1	2.48	0.46
2:C:301:SVR:S73	2:C:301:SVR:N63	2.88	0.46
1:C:141:PRO:HB2	1:C:144:MET:HG3	1.98	0.46
1:B:211:PRO:O	1:B:214:VAL:HG22	2.16	0.46
1:C:133:MET:HE1	1:C:176:ALA:HB3	1.98	0.45
1:E:153:ILE:HA	1:E:154:PRO:HD3	1.74	0.45
2:E:301:SVR:H62	2:E:301:SVR:O79	2.16	0.45
1:C:12:GLY:HA3	1:D:113:THR:OG1	2.16	0.45
1:B:12:GLY:HA3	1:C:113:THR:OG1	2.17	0.45
1:E:190:LYS:CD	1:E:245:LEU:HD13	2.38	0.45
1:A:138:GLU:OE1	1:A:138:GLU:N	2.40	0.45
1:E:133:MET:HG3	1:E:145:MET:CE	2.47	0.45
1:A:37:LEU:HD11	1:A:100:LEU:HD23	1.97	0.45
2:B:301:SVR:N63	2:B:301:SVR:S73	2.90	0.45
1:B:94:GLU:OE1	3:B:429:HOH:O	2.21	0.44
2:D:301:SVR:S73	2:D:301:SVR:N63	2.90	0.44
1:C:41:LYS:HG2	1:C:102:ILE:HD11	1.99	0.44
1:C:233:ARG:O	1:C:237:VAL:HG23	2.18	0.44
1:E:125:TYR:OH	1:D:22:GLU:OE1	2.31	0.44
1:C:75:MET:HG3	1:C:80:SER:OG	2.17	0.44
1:E:141:PRO:HA	1:E:142:PRO:HD3	1.86	0.44
1:C:41:LYS:HG2	1:C:102:ILE:CD1	2.48	0.43
1:E:220:LYS:HA	1:E:225:LEU:O	2.18	0.43
1:C:202:HIS:HB3	3:C:403:HOH:O	2.16	0.43
1:D:153:ILE:HA	1:D:154:PRO:HD3	1.88	0.43
1:D:198:ARG:HG3	1:D:199:ASP:H	1.83	0.43
1:A:244:ASN:O	1:A:245:LEU:HB2	2.18	0.43

Continued on next page...

Continued from previous page...

Atom-1	Atom-2	Interatomic distance (Å)	Clash overlap (Å)
1:E:189:SER:OG	1:E:192:GLU:HB2	2.18	0.43
1:D:189:SER:O	1:D:193:VAL:HG13	2.19	0.42
1:A:134:ASN:HA	1:A:137:VAL:O	2.19	0.42
1:A:189:SER:O	1:A:193:VAL:HG13	2.19	0.42
1:A:141:PRO:HA	1:A:142:PRO:HD3	1.83	0.42
1:B:31:GLU:OE1	1:B:99:ARG:NH1	2.52	0.42
1:B:95:ARG:HA	2:B:301:SVR:O86	2.20	0.42
1:B:153:ILE:HA	1:B:154:PRO:HD3	1.92	0.42
1:B:233:ARG:O	1:B:237:VAL:HG23	2.20	0.42
1:E:241:ALA:O	1:E:245:LEU:O	2.38	0.42
1:D:3:GLU:CD	1:D:3:GLU:N	2.72	0.42
1:E:113:THR:OG1	1:D:12:GLY:HA3	2.20	0.41
1:B:47:GLY:O	1:B:50:TRP:HD1	2.02	0.41
1:E:240:ALA:O	1:E:244:ASN:HB2	2.20	0.41
1:D:162:THR:HG23	1:D:231:PRO:HD3	2.02	0.41
1:A:210:PHE:HA	1:A:211:PRO:HD3	1.76	0.41
1:C:210:PHE:HA	1:C:211:PRO:HD3	1.84	0.41
1:D:41:LYS:HG2	1:D:102:ILE:CD1	2.50	0.41
1:B:133:MET:HE3	1:B:173:TRP:HD1	1.85	0.41
1:C:167:MET:O	1:C:171:SER:OG	2.28	0.41
1:E:123:LYS:HE2	1:E:123:LYS:HB2	1.88	0.41
1:B:191:THR:O	1:B:194:TYR:HB3	2.20	0.41
1:A:199:ASP:OD2	3:A:442:HOH:O	2.22	0.41
1:A:52:LYS:NZ	1:A:53:ASP:OD1	2.33	0.41
1:A:52:LYS:CG	1:A:82:ARG:HH22	2.34	0.41
1:D:6:ARG:O	1:D:10:GLU:HG3	2.20	0.41
1:B:20:GLU:OE1	3:B:414:HOH:O	2.21	0.41
1:E:141:PRO:HB2	1:E:144:MET:HG3	2.03	0.41
1:C:188:ALA:HA	1:D:186:ARG:HH21	1.86	0.40
1:D:47:GLY:O	1:D:50:TRP:HD1	2.03	0.40
1:A:52:LYS:HG2	1:A:53:ASP:N	2.34	0.40
1:E:210:PHE:HA	1:E:211:PRO:HD3	1.81	0.40
1:B:136:LYS:NZ	1:B:175:ASP:OD2	2.53	0.40
1:C:141:PRO:HA	1:C:142:PRO:HD3	1.82	0.40
1:B:190:LYS:NZ	1:B:242:TYR:O	2.42	0.40
1:A:21:LEU:HB3	1:B:122:LEU:HD21	2.03	0.40
1:B:52:LYS:HD3	1:B:53:ASP:OD1	2.22	0.40

All (1) symmetry-related close contacts are listed below. The label for Atom-2 includes the symmetry operator and encoded unit-cell translations to be applied.

Atom-1	Atom-2	Interatomic distance (Å)	Clash overlap (Å)
1:D:138:GLU:OE2	3:C:416:HOH:O[2_656]	2.17	0.03

5.3 Torsion angles [i](#)

5.3.1 Protein backbone [i](#)

In the following table, the Percentiles column shows the percent Ramachandran outliers of the chain as a percentile score with respect to all X-ray entries followed by that with respect to entries of similar resolution.

The Analysed column shows the number of residues for which the backbone conformation was analysed, and the total number of residues.

Mol	Chain	Analysed	Favoured	Allowed	Outliers	Percentiles	
1	A	242/248 (98%)	240 (99%)	2 (1%)	0	100	100
1	B	236/248 (95%)	234 (99%)	2 (1%)	0	100	100
1	C	243/248 (98%)	240 (99%)	3 (1%)	0	100	100
1	D	244/248 (98%)	242 (99%)	2 (1%)	0	100	100
1	E	236/248 (95%)	234 (99%)	2 (1%)	0	100	100
All	All	1201/1240 (97%)	1190 (99%)	11 (1%)	0	100	100

There are no Ramachandran outliers to report.

5.3.2 Protein sidechains [i](#)

In the following table, the Percentiles column shows the percent sidechain outliers of the chain as a percentile score with respect to all X-ray entries followed by that with respect to entries of similar resolution.

The Analysed column shows the number of residues for which the sidechain conformation was analysed, and the total number of residues.

Mol	Chain	Analysed	Rotameric	Outliers	Percentiles	
1	A	199/202 (98%)	191 (96%)	8 (4%)	31	44
1	B	196/202 (97%)	184 (94%)	12 (6%)	18	25
1	C	200/202 (99%)	186 (93%)	14 (7%)	15	19
1	D	200/202 (99%)	190 (95%)	10 (5%)	24	34
1	E	195/202 (96%)	187 (96%)	8 (4%)	30	43

Continued on next page...

Continued from previous page...

Mol	Chain	Analysed	Rotameric	Outliers	Percentiles	
All	All	990/1010 (98%)	938 (95%)	52 (5%)	22	31

All (52) residues with a non-rotameric sidechain are listed below:

Mol	Chain	Res	Type
1	A	18	LEU
1	A	52	LYS
1	A	67	LYS
1	A	98	THR
1	A	183	VAL
1	A	202	HIS
1	A	233	ARG
1	A	245	LEU
1	B	18	LEU
1	B	21	LEU
1	B	33	LEU
1	B	52	LYS
1	B	87	GLN
1	B	98	THR
1	B	111	LEU
1	B	175	ASP
1	B	181	ILE
1	B	202	HIS
1	B	207	SER
1	B	245	LEU
1	C	5	SER
1	C	16	LEU
1	C	22	GLU
1	C	87	GLN
1	C	100	LEU
1	C	137	VAL
1	C	180	THR
1	C	183	VAL
1	C	186	ARG
1	C	189	SER
1	C	192	GLU
1	C	193	VAL
1	C	202	HIS
1	C	245	LEU
1	E	18	LEU
1	E	97	GLU
1	E	98	THR

Continued on next page...

Continued from previous page...

Mol	Chain	Res	Type
1	E	100	LEU
1	E	124	GLU
1	E	155	THR
1	E	191	THR
1	E	202	HIS
1	D	1	MET
1	D	16	LEU
1	D	22	GLU
1	D	37	LEU
1	D	76	SER
1	D	81	LYS
1	D	111	LEU
1	D	183	VAL
1	D	191	THR
1	D	202	HIS

Sometimes sidechains can be flipped to improve hydrogen bonding and reduce clashes. All (5) such sidechains are listed below:

Mol	Chain	Res	Type
1	A	14	GLN
1	A	202	HIS
1	A	244	ASN
1	E	14	GLN
1	D	244	ASN

5.3.3 RNA [i](#)

There are no RNA molecules in this entry.

5.4 Non-standard residues in protein, DNA, RNA chains [i](#)

There are no non-standard protein/DNA/RNA residues in this entry.

5.5 Carbohydrates [i](#)

There are no monosaccharides in this entry.

5.6 Ligand geometry

5 ligands are modelled in this entry.

In the following table, the Counts columns list the number of bonds (or angles) for which Mogul statistics could be retrieved, the number of bonds (or angles) that are observed in the model and the number of bonds (or angles) that are defined in the Chemical Component Dictionary. The Link column lists molecule types, if any, to which the group is linked. The Z score for a bond length (or angle) is the number of standard deviations the observed value is removed from the expected value. A bond length (or angle) with $|Z| > 2$ is considered an outlier worth inspection. RMSZ is the root-mean-square of all Z scores of the bond lengths (or angles).

Mol	Type	Chain	Res	Link	Bond lengths			Bond angles		
					Counts	RMSZ	# Z > 2	Counts	RMSZ	# Z > 2
2	SVR	B	301	-	33,35,93	1.06	3 (9%)	50,56,145	1.32	8 (16%)
2	SVR	D	301	-	33,35,93	1.04	2 (6%)	50,56,145	1.30	8 (16%)
2	SVR	E	301	-	33,35,93	1.05	2 (6%)	50,56,145	1.23	7 (14%)
2	SVR	A	301	-	33,35,93	1.05	2 (6%)	50,56,145	1.23	7 (14%)
2	SVR	C	301	-	33,35,93	1.04	2 (6%)	50,56,145	1.22	9 (18%)

In the following table, the Chirals column lists the number of chiral outliers, the number of chiral centers analysed, the number of these observed in the model and the number defined in the Chemical Component Dictionary. Similar counts are reported in the Torsion and Rings columns. '-' means no outliers of that kind were identified.

Mol	Type	Chain	Res	Link	Chirals	Torsions	Rings
2	SVR	B	301	-	-	0/26/26/76	0/3/3/8
2	SVR	D	301	-	-	1/26/26/76	0/3/3/8
2	SVR	E	301	-	-	0/26/26/76	0/3/3/8
2	SVR	A	301	-	-	0/26/26/76	0/3/3/8
2	SVR	C	301	-	-	1/26/26/76	0/3/3/8

All (11) bond length outliers are listed below:

Mol	Chain	Res	Type	Atoms	Z	Observed(Å)	Ideal(Å)
2	E	301	SVR	C61-N63	3.86	1.46	1.35
2	A	301	SVR	C61-N63	3.84	1.46	1.35
2	B	301	SVR	C61-N63	3.84	1.46	1.35
2	D	301	SVR	C61-N63	3.82	1.46	1.35
2	C	301	SVR	C61-N63	3.78	1.46	1.35
2	E	301	SVR	C55-N53	2.67	1.46	1.38
2	B	301	SVR	C55-N53	2.64	1.46	1.38
2	C	301	SVR	C55-N53	2.63	1.46	1.38
2	A	301	SVR	C55-N53	2.62	1.46	1.38

Continued on next page...

Continued from previous page...

Mol	Chain	Res	Type	Atoms	Z	Observed(Å)	Ideal(Å)
2	D	301	SVR	C55-N53	2.59	1.46	1.38
2	B	301	SVR	C71-C68	-2.07	1.39	1.43

All (39) bond angle outliers are listed below:

Mol	Chain	Res	Type	Atoms	Z	Observed(°)	Ideal(°)
2	A	301	SVR	O81-S75-C71	2.99	115.04	106.37
2	D	301	SVR	C66-C65-N63	2.94	124.56	120.33
2	B	301	SVR	O81-S75-C71	2.82	114.54	106.37
2	D	301	SVR	O81-S75-C71	2.81	114.52	106.37
2	B	301	SVR	C66-C65-N63	2.71	124.24	120.33
2	D	301	SVR	O86-S83-C76	2.71	112.90	106.68
2	E	301	SVR	O81-S75-C71	2.63	113.98	106.37
2	E	301	SVR	C69-C66-C68	2.57	118.19	116.78
2	D	301	SVR	C67-C65-N63	-2.56	116.36	123.50
2	C	301	SVR	O81-S75-C71	2.47	113.54	106.37
2	B	301	SVR	C67-C65-N63	-2.43	116.73	123.50
2	E	301	SVR	O84-S83-O86	-2.42	100.68	112.88
2	E	301	SVR	O86-S83-C76	2.40	112.20	106.68
2	B	301	SVR	O84-S83-O86	-2.37	100.95	112.88
2	A	301	SVR	O84-S83-O86	-2.37	100.97	112.88
2	B	301	SVR	O77-S73-C69	2.36	113.20	106.37
2	E	301	SVR	O77-S73-C69	2.36	113.19	106.37
2	C	301	SVR	O81-S75-O80	-2.34	101.11	112.88
2	D	301	SVR	O84-S83-O86	-2.32	101.20	112.88
2	A	301	SVR	O86-S83-C76	2.32	112.00	106.68
2	B	301	SVR	O86-S83-C76	2.28	111.91	106.68
2	D	301	SVR	O81-S75-O80	-2.28	101.42	112.88
2	A	301	SVR	O81-S75-O80	-2.27	101.48	112.88
2	C	301	SVR	C69-C66-C68	2.26	118.02	116.78
2	E	301	SVR	O81-S75-O80	-2.26	101.52	112.88
2	C	301	SVR	C67-C65-N63	-2.26	117.20	123.50
2	B	301	SVR	O81-S75-O80	-2.25	101.55	112.88
2	C	301	SVR	O78-S73-O77	-2.25	101.56	112.88
2	A	301	SVR	C69-C66-C68	2.24	118.01	116.78
2	C	301	SVR	O86-S83-C76	2.21	111.77	106.68
2	B	301	SVR	O78-S73-O77	-2.18	101.92	112.88
2	C	301	SVR	O84-S83-O86	-2.18	101.92	112.88
2	E	301	SVR	O78-S73-O77	-2.14	102.10	112.88
2	A	301	SVR	O77-S73-C69	2.13	112.53	106.37
2	D	301	SVR	O78-S73-O77	-2.12	102.21	112.88
2	A	301	SVR	O78-S73-O77	-2.10	102.29	112.88

Continued on next page...

Continued from previous page...

Mol	Chain	Res	Type	Atoms	Z	Observed(°)	Ideal(°)
2	C	301	SVR	C66-C65-N63	2.10	123.36	120.33
2	D	301	SVR	O77-S73-C69	2.04	112.27	106.37
2	C	301	SVR	O77-S73-C69	2.03	112.25	106.37

There are no chirality outliers.

All (2) torsion outliers are listed below:

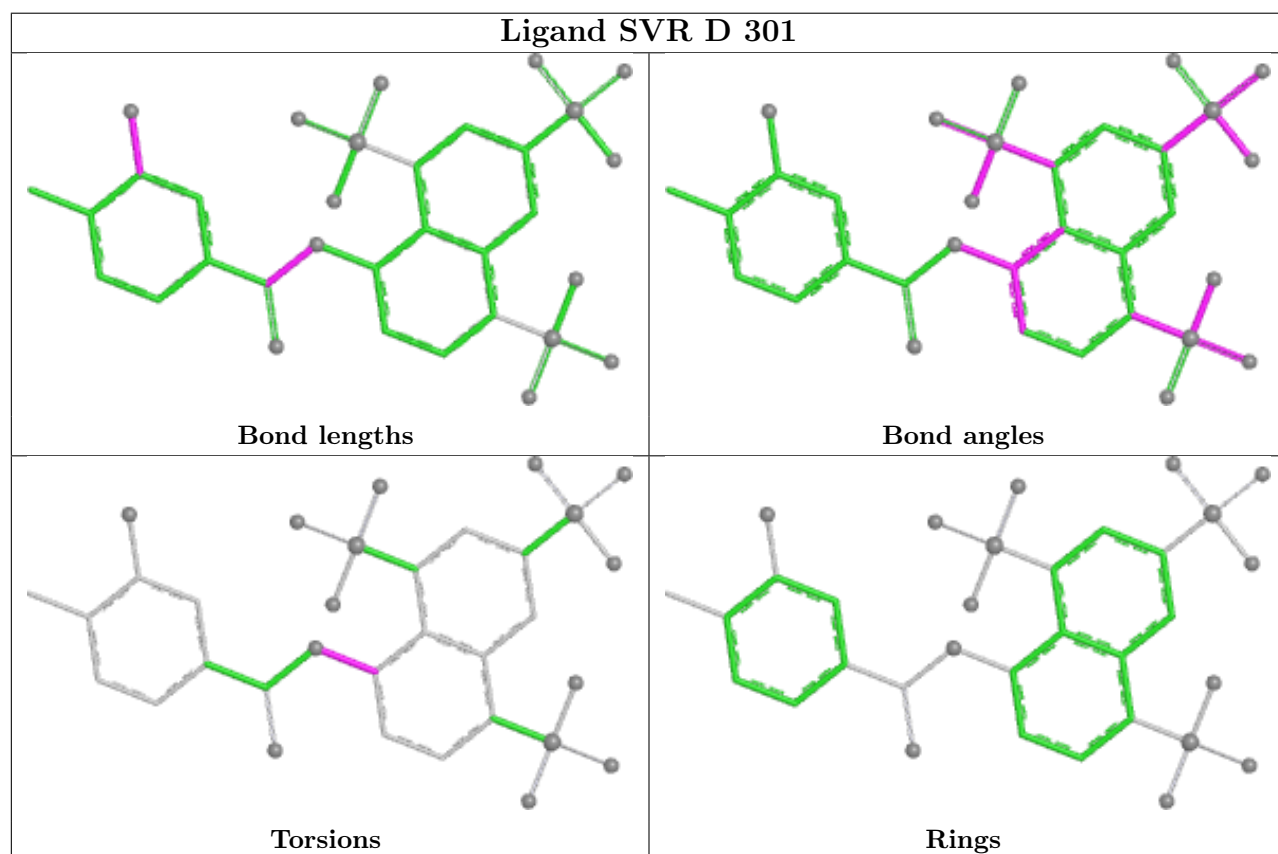
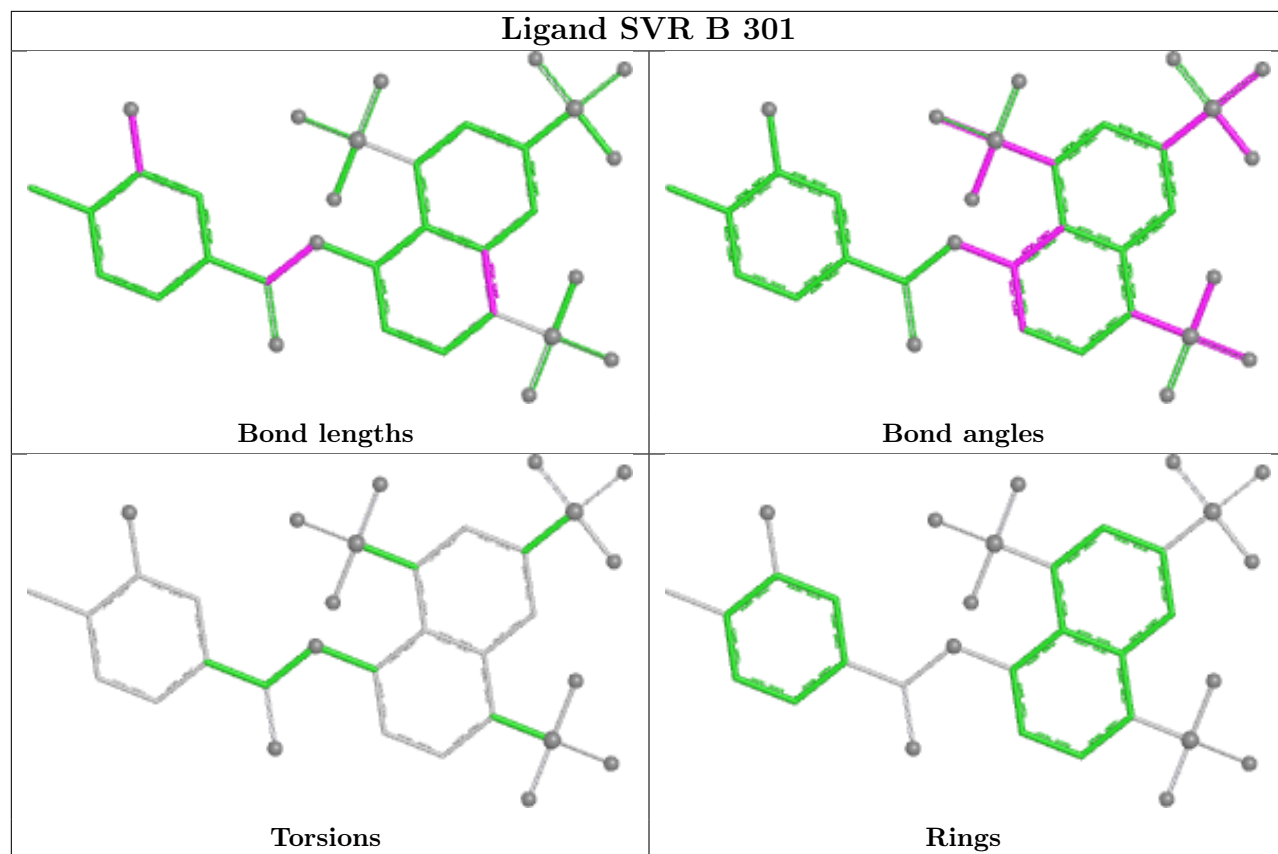
Mol	Chain	Res	Type	Atoms
2	C	301	SVR	C68-C71-S75-O81
2	D	301	SVR	C67-C65-N63-C61

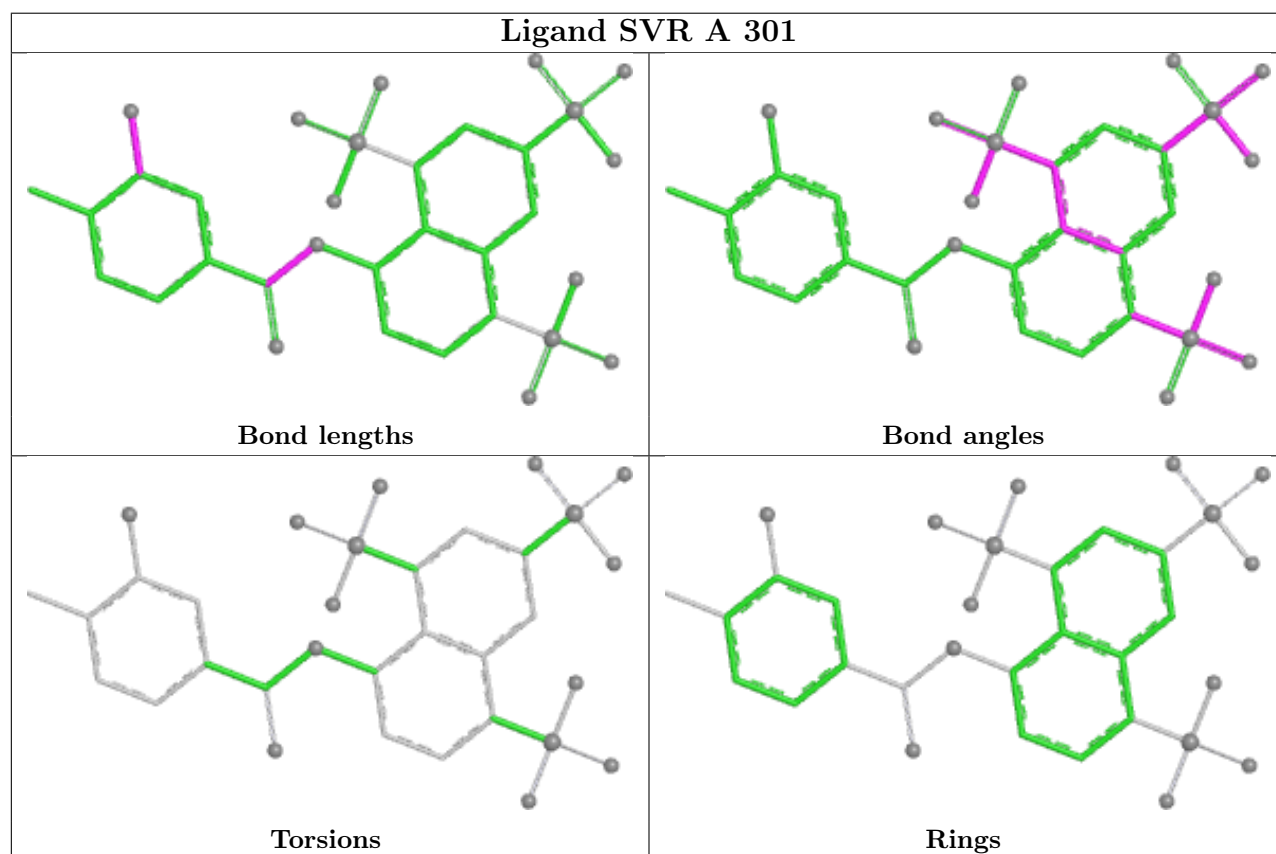
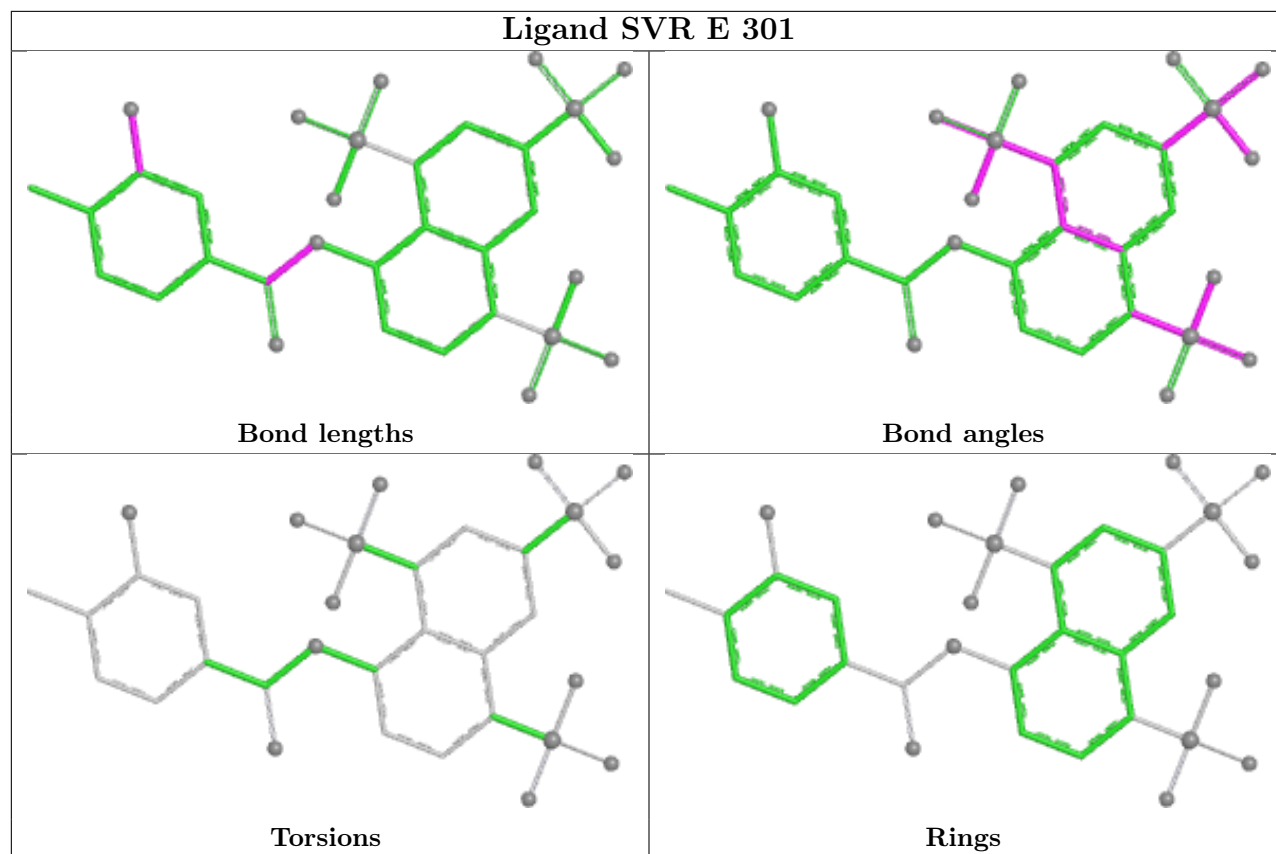
There are no ring outliers.

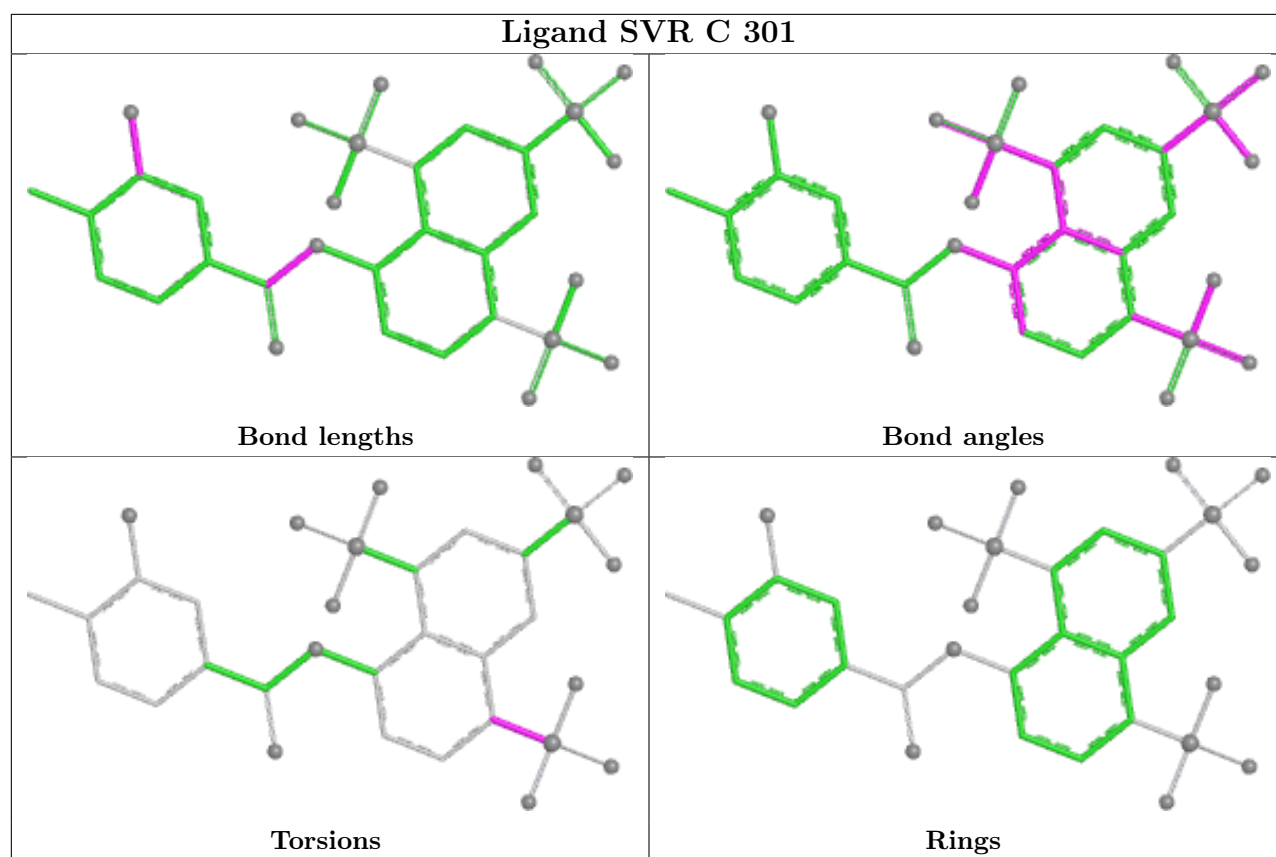
5 monomers are involved in 10 short contacts:

Mol	Chain	Res	Type	Clashes	Symm-Clashes
2	B	301	SVR	2	0
2	D	301	SVR	2	0
2	E	301	SVR	3	0
2	A	301	SVR	1	0
2	C	301	SVR	2	0

The following is a two-dimensional graphical depiction of Mogul quality analysis of bond lengths, bond angles, torsion angles, and ring geometry for all instances of the Ligand of Interest. In addition, ligands with molecular weight > 250 and outliers as shown on the validation Tables will also be included. For torsion angles, if less than 5% of the Mogul distribution of torsion angles is within 10 degrees of the torsion angle in question, then that torsion angle is considered an outlier. Any bond that is central to one or more torsion angles identified as an outlier by Mogul will be highlighted in the graph. For rings, the root-mean-square deviation (RMSD) between the ring in question and similar rings identified by Mogul is calculated over all ring torsion angles. If the average RMSD is greater than 60 degrees and the minimal RMSD between the ring in question and any Mogul-identified rings is also greater than 60 degrees, then that ring is considered an outlier. The outliers are highlighted in purple. The color gray indicates Mogul did not find sufficient equivalents in the CSD to analyse the geometry.







5.7 Other polymers [i](#)

There are no such residues in this entry.

5.8 Polymer linkage issues [i](#)

There are no chain breaks in this entry.

6 Fit of model and data

6.1 Protein, DNA and RNA chains

In the following table, the column labelled ‘#RSRZ > 2’ contains the number (and percentage) of RSRZ outliers, followed by percent RSRZ outliers for the chain as percentile scores relative to all X-ray entries and entries of similar resolution. The OWAB column contains the minimum, median, 95th percentile and maximum values of the occupancy-weighted average B-factor per residue. The column labelled ‘Q < 0.9’ lists the number of (and percentage) of residues with an average occupancy less than 0.9.

Mol	Chain	Analysed	<RSRZ>	#RSRZ>2	OWAB(Å ²)	Q<0.9
1	A	244/248 (98%)	0.33	6 (2%) 57 64	25, 39, 71, 90	0
1	B	240/248 (96%)	0.59	15 (6%) 20 25	31, 58, 86, 100	0
1	C	245/248 (98%)	0.57	14 (5%) 23 30	33, 54, 81, 94	0
1	D	246/248 (99%)	0.37	14 (5%) 23 30	27, 42, 75, 94	0
1	E	240/248 (96%)	0.47	15 (6%) 20 25	27, 48, 80, 98	0
All	All	1215/1240 (97%)	0.47	64 (5%) 26 33	25, 48, 81, 100	0

All (64) RSRZ outliers are listed below:

Mol	Chain	Res	Type	RSRZ
1	C	186	ARG	6.1
1	C	245	LEU	5.3
1	A	183	VAL	5.3
1	B	225	LEU	5.1
1	E	191	THR	4.9
1	E	229	GLY	4.8
1	D	1	MET	4.7
1	C	184	LYS	4.4
1	E	188	ALA	4.4
1	D	135	LEU	4.2
1	E	226	GLY	4.1
1	B	245	LEU	4.0
1	E	225	LEU	4.0
1	E	227	PRO	3.9
1	B	182	ASN	3.8
1	D	0	ALA	3.8
1	B	195	ASN	3.7
1	D	161	ALA	3.6
1	E	228	ASP	3.4
1	B	230	VAL	3.3

Continued on next page...

Continued from previous page...

Mol	Chain	Res	Type	RSRZ
1	A	245	LEU	3.2
1	C	183	VAL	3.2
1	B	236	GLU	3.2
1	A	202	HIS	2.8
1	C	187	GLY	2.8
1	D	186	ARG	2.7
1	D	184	LYS	2.6
1	B	100	LEU	2.6
1	B	188	ALA	2.6
1	D	187	GLY	2.6
1	A	186	ARG	2.5
1	E	157	GLY	2.5
1	C	160	GLU	2.5
1	B	181	ILE	2.4
1	C	135	LEU	2.3
1	E	245	LEU	2.3
1	D	245	LEU	2.3
1	E	6	ARG	2.3
1	C	188	ALA	2.3
1	C	193	VAL	2.3
1	D	208	VAL	2.3
1	E	159	SER	2.3
1	C	95	ARG	2.3
1	C	100	LEU	2.2
1	A	138	GLU	2.2
1	C	241	ALA	2.2
1	D	228	ASP	2.2
1	B	82	ARG	2.2
1	D	192	GLU	2.2
1	B	165	THR	2.2
1	D	198	ARG	2.2
1	D	139	ASN	2.1
1	E	216	VAL	2.1
1	B	162	THR	2.1
1	B	234	ALA	2.1
1	A	188	ALA	2.1
1	C	52	LYS	2.1
1	C	105	VAL	2.1
1	E	158	VAL	2.1
1	E	230	VAL	2.1
1	D	160	GLU	2.0
1	B	164	LYS	2.0

Continued on next page...

Continued from previous page...

Mol	Chain	Res	Type	RSRZ
1	B	244	ASN	2.0
1	E	156	ALA	2.0

6.2 Non-standard residues in protein, DNA, RNA chains [i](#)

There are no non-standard protein/DNA/RNA residues in this entry.

6.3 Carbohydrates [i](#)

There are no monosaccharides in this entry.

6.4 Ligands [i](#)

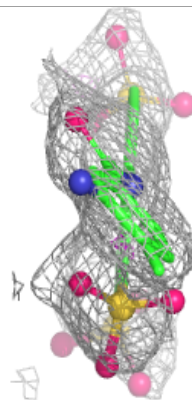
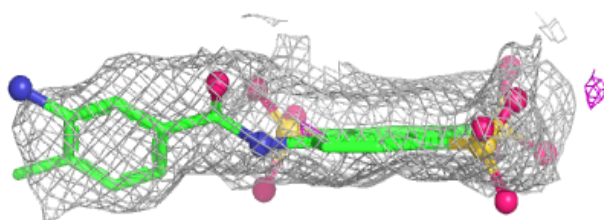
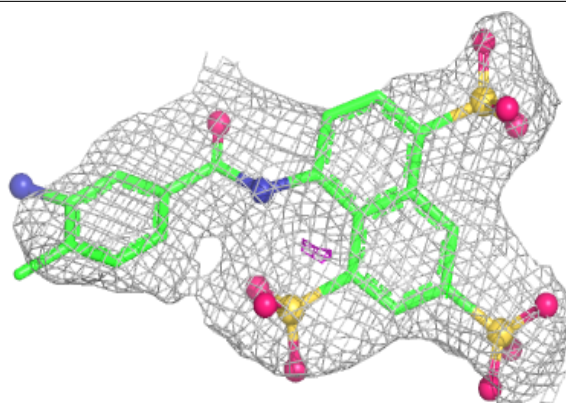
In the following table, the Atoms column lists the number of modelled atoms in the group and the number defined in the chemical component dictionary. The B-factors column lists the minimum, median, 95th percentile and maximum values of B factors of atoms in the group. The column labelled 'Q < 0.9' lists the number of atoms with occupancy less than 0.9.

Mol	Type	Chain	Res	Atoms	RSCC	RSR	B-factors(Å ²)	Q < 0.9
2	SVR	C	301	33/86	0.81	0.22	81,86,131,132	0
2	SVR	B	301	33/86	0.85	0.27	62,80,108,112	0
2	SVR	E	301	33/86	0.86	0.21	59,70,97,99	0
2	SVR	A	301	33/86	0.90	0.17	42,63,97,102	0
2	SVR	D	301	33/86	0.93	0.14	41,53,76,85	0

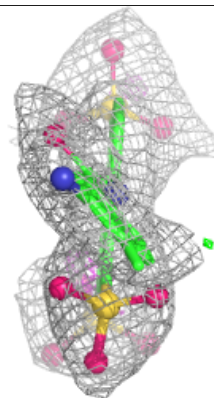
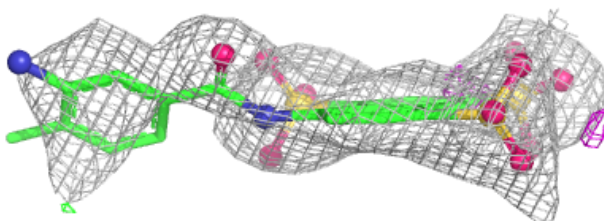
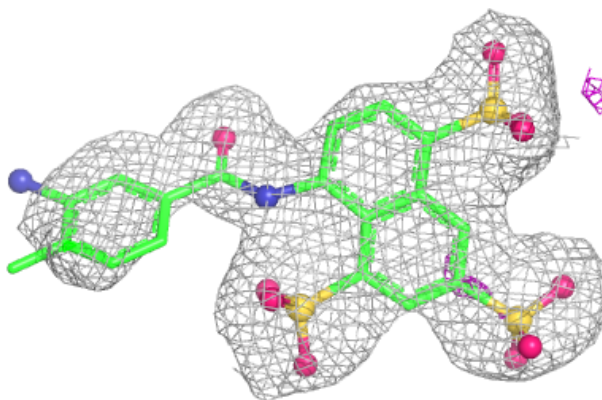
The following is a graphical depiction of the model fit to experimental electron density of all instances of the Ligand of Interest. In addition, ligands with molecular weight > 250 and outliers as shown on the geometry validation Tables will also be included. Each fit is shown from different orientation to approximate a three-dimensional view.

Electron density around SVR C 301:

$2mF_o-DF_c$ (at 0.7 rmsd) in gray
 mF_o-DF_c (at 3 rmsd) in purple (negative)
and green (positive)

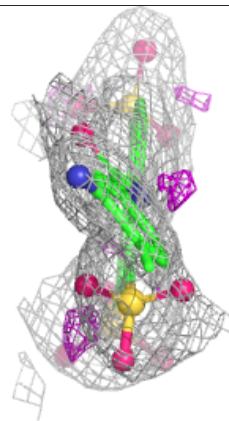
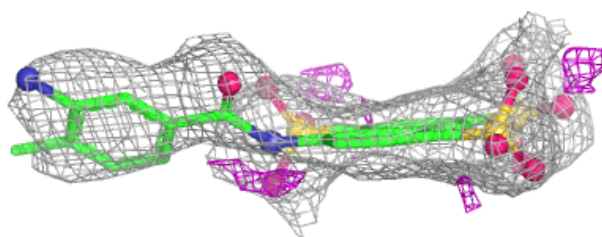
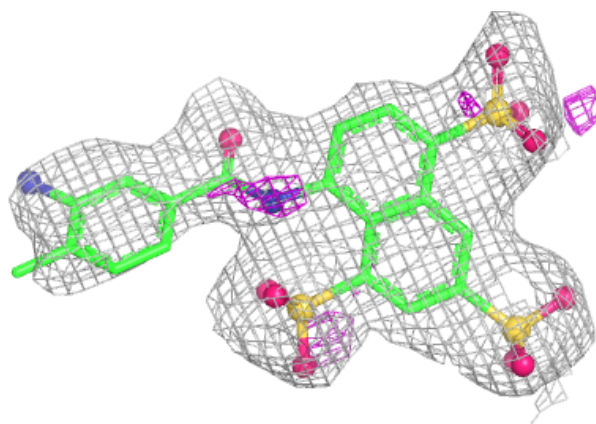
**Electron density around SVR B 301:**

$2mF_o-DF_c$ (at 0.7 rmsd) in gray
 mF_o-DF_c (at 3 rmsd) in purple (negative)
and green (positive)

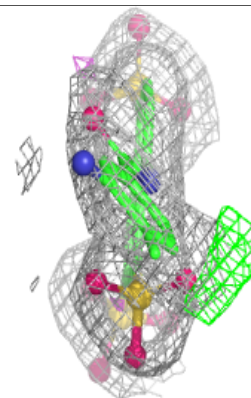
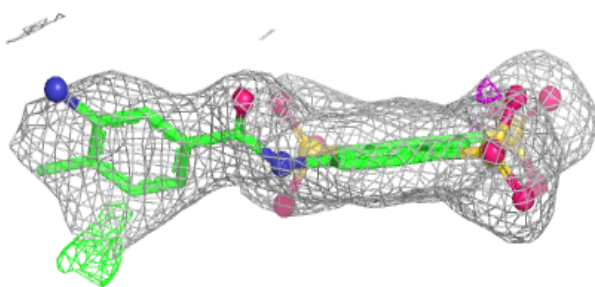
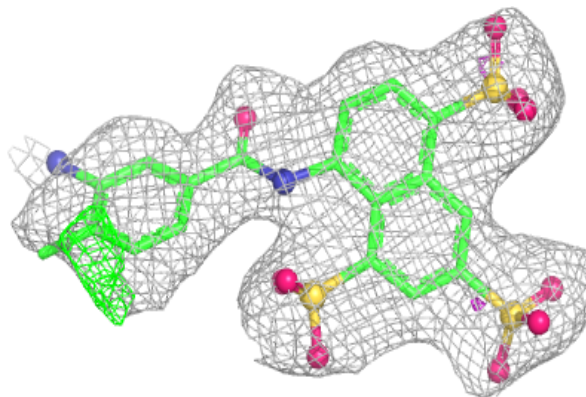


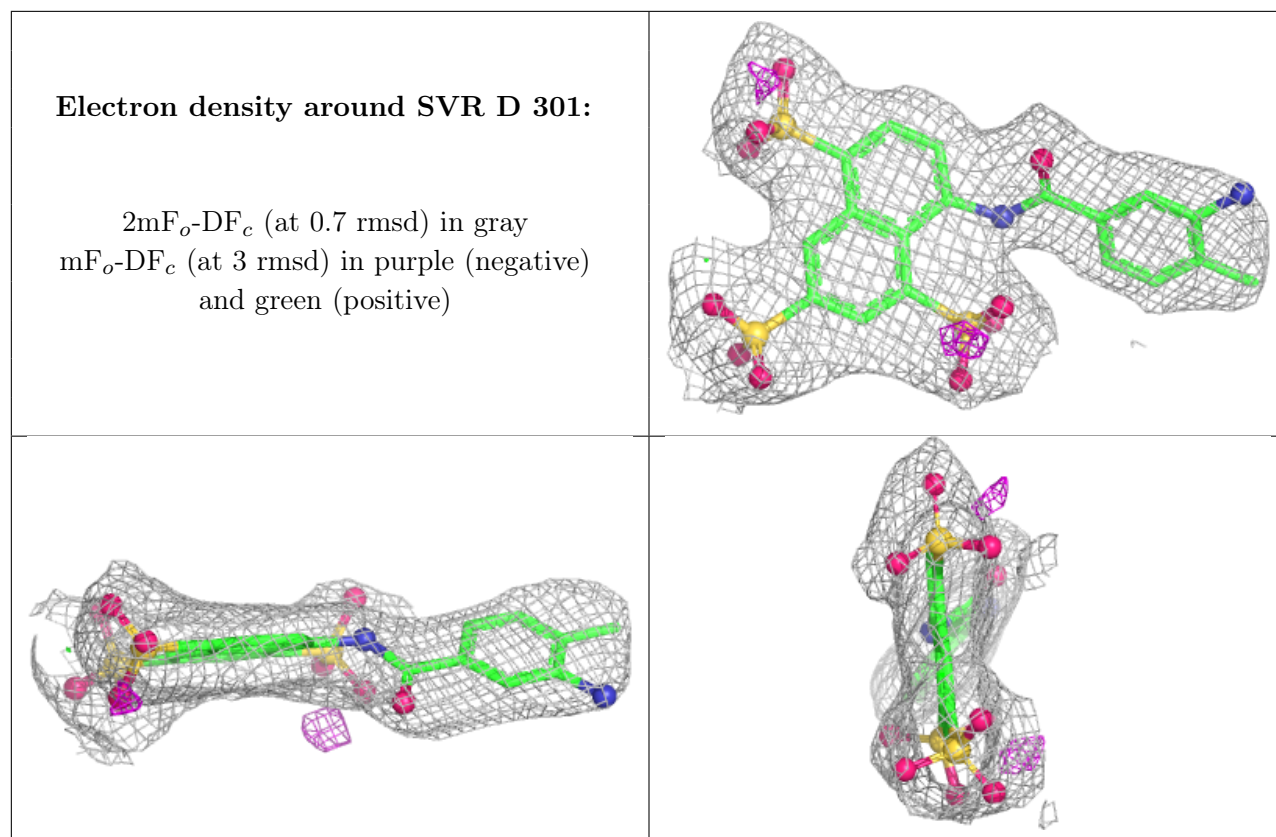
Electron density around SVR E 301:

$2mF_o-DF_c$ (at 0.7 rmsd) in gray
 mF_o-DF_c (at 3 rmsd) in purple (negative)
and green (positive)

**Electron density around SVR A 301:**

$2mF_o-DF_c$ (at 0.7 rmsd) in gray
 mF_o-DF_c (at 3 rmsd) in purple (negative)
and green (positive)





6.5 Other polymers [i](#)

There are no such residues in this entry.