



# Full wwPDB X-ray Structure Validation Report ⓘ

Apr 15, 2024 – 04:18 PM JST

PDB ID : 8J4Q  
Title : Crystal structure of eKatE (extra KatE) from atypical E. coli  
Authors : Yoo, Y.  
Deposited on : 2023-04-20  
Resolution : 2.10 Å(reported)

This is a Full wwPDB X-ray Structure Validation Report for a publicly released PDB entry.

We welcome your comments at [validation@mail.wwpdb.org](mailto:validation@mail.wwpdb.org)

A user guide is available at

<https://www.wwpdb.org/validation/2017/XrayValidationReportHelp>

with specific help available everywhere you see the ⓘ symbol.

The types of validation reports are described at

<http://www.wwpdb.org/validation/2017/FAQs#types>.

---

The following versions of software and data (see [references ⓘ](#)) were used in the production of this report:

MolProbity : 4.02b-467  
Mogul : 1.8.5 (274361), CSD as541be (2020)  
Xtriage (Phenix) : 1.13  
EDS : 2.36  
buster-report : 1.1.7 (2018)  
Percentile statistics : 20191225.v01 (using entries in the PDB archive December 25th 2019)  
Refmac : 5.8.0158  
CCP4 : 7.0.044 (Gargrove)  
Ideal geometry (proteins) : Engh & Huber (2001)  
Ideal geometry (DNA, RNA) : Parkinson et al. (1996)  
Validation Pipeline (wwPDB-VP) : 2.36

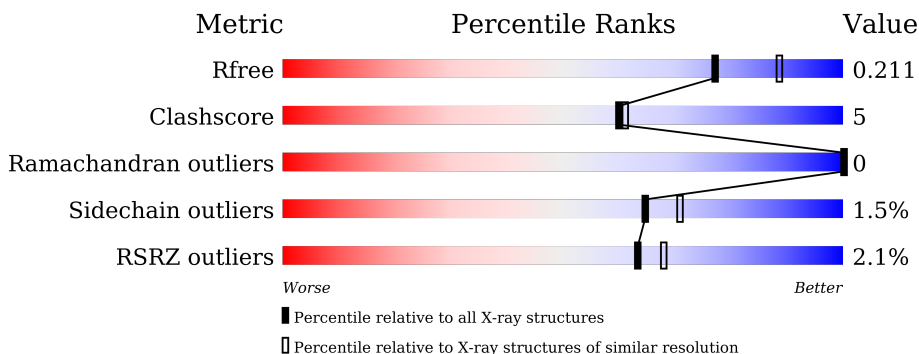
# 1 Overall quality at a glance

The following experimental techniques were used to determine the structure:

*X-RAY DIFFRACTION*

The reported resolution of this entry is 2.10 Å.

Percentile scores (ranging between 0-100) for global validation metrics of the entry are shown in the following graphic. The table shows the number of entries on which the scores are based.



Metric	Whole archive (#Entries)	Similar resolution (#Entries, resolution range(Å))
$R_{free}$	130704	5197 (2.10-2.10)
Clashscore	141614	5710 (2.10-2.10)
Ramachandran outliers	138981	5647 (2.10-2.10)
Sidechain outliers	138945	5648 (2.10-2.10)
RSRZ outliers	127900	5083 (2.10-2.10)

The table below summarises the geometric issues observed across the polymeric chains and their fit to the electron density. The red, orange, yellow and green segments of the lower bar indicate the fraction of residues that contain outliers for  $\geq 3$ , 2, 1 and 0 types of geometric quality criteria respectively. A grey segment represents the fraction of residues that are not modelled. The numeric value for each fraction is indicated below the corresponding segment, with a dot representing fractions  $\leq 5\%$ . The upper red bar (where present) indicates the fraction of residues that have poor fit to the electron density. The numeric value is given above the bar.

Mol	Chain	Length	Quality of chain
1	A	750	 2% 83% 13% .
2	B	750	 3% 83% 13% .
2	C	750	 % 84% 12% .
2	D	750	 2% 86% 10% .

## 2 Entry composition [i](#)

There are 4 unique types of molecules in this entry. The entry contains 24699 atoms, of which 0 are hydrogens and 0 are deuteriums.

In the tables below, the ZeroOcc column contains the number of atoms modelled with zero occupancy, the AltConf column contains the number of residues with at least one atom in alternate conformation and the Trace column contains the number of residues modelled with at most 2 atoms.

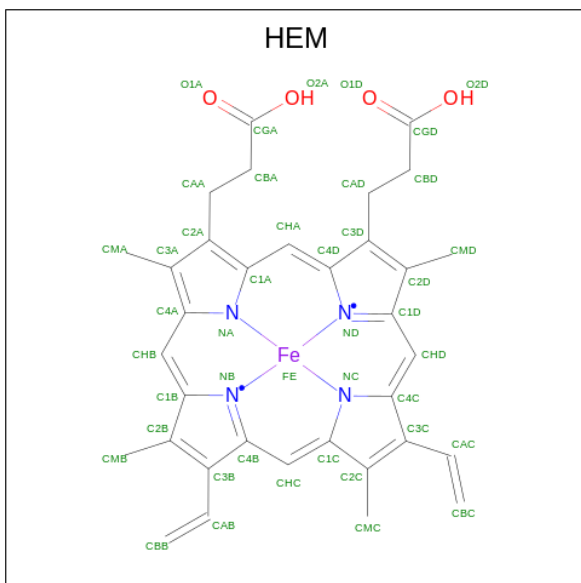
- Molecule 1 is a protein called Catalase.

Mol	Chain	Residues	Atoms					ZeroOcc	AltConf	Trace
			Total	C	N	O	S			
1	A	721	5774	3660	1013	1080	21	0	4	0

- Molecule 2 is a protein called Catalase.

Mol	Chain	Residues	Atoms					ZeroOcc	AltConf	Trace
			Total	C	N	O	S			
2	B	723	5791	3671	1016	1083	21	0	4	0
2	C	723	5791	3671	1016	1083	21	0	4	0
2	D	724	5798	3676	1017	1084	21	0	4	0

- Molecule 3 is PROTOPORPHYRIN IX CONTAINING FE (three-letter code: HEM) (formula:  $C_{34}H_{32}FeN_4O_4$ ).



Mol	Chain	Residues	Atoms				ZeroOcc	AltConf	
3	A	1	Total	C	Fe	N	O	0	0
			43	34	1	4	4		
3	B	1	Total	C	Fe	N	O	0	0
			43	34	1	4	4		
3	C	1	Total	C	Fe	N	O	0	0
			43	34	1	4	4		
3	D	1	Total	C	Fe	N	O	0	0
			43	34	1	4	4		

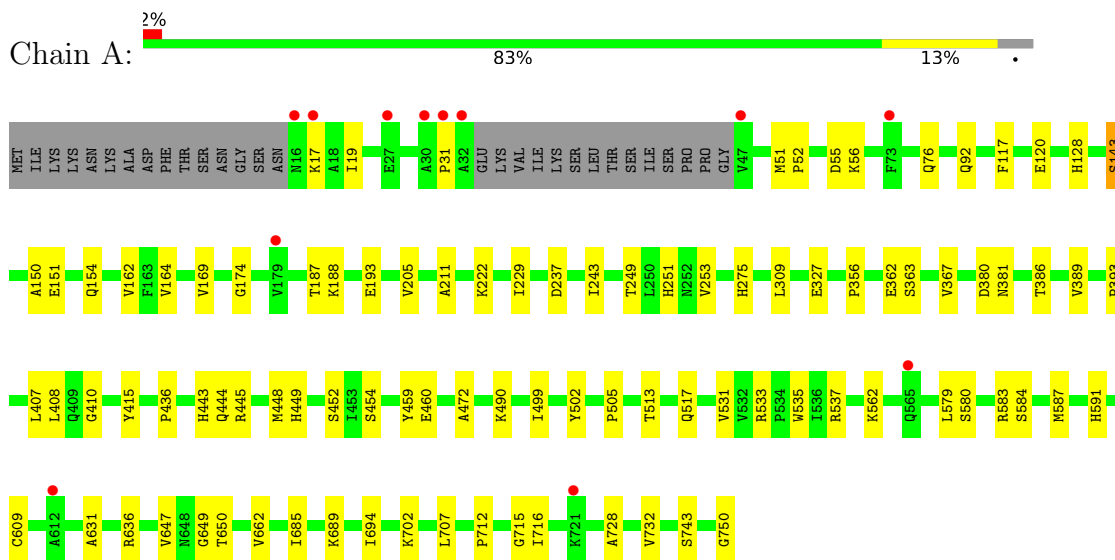
- Molecule 4 is water.

Mol	Chain	Residues	Atoms		ZeroOcc	AltConf
4	A	343	Total	O	0	0
			343	343		
4	B	339	Total	O	0	0
			339	339		
4	C	362	Total	O	0	0
			362	362		
4	D	329	Total	O	0	0
			329	329		

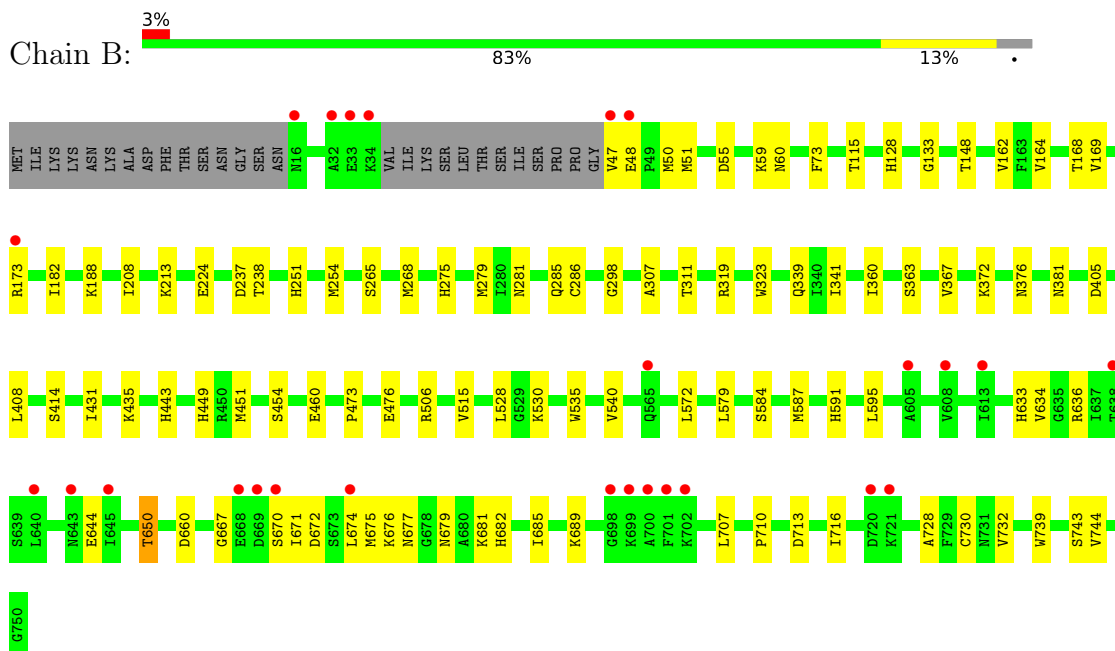
### 3 Residue-property plots [i](#)

These plots are drawn for all protein, RNA, DNA and oligosaccharide chains in the entry. The first graphic for a chain summarises the proportions of the various outlier classes displayed in the second graphic. The second graphic shows the sequence view annotated by issues in geometry and electron density. Residues are color-coded according to the number of geometric quality criteria for which they contain at least one outlier: green = 0, yellow = 1, orange = 2 and red = 3 or more. A red dot above a residue indicates a poor fit to the electron density ( $RSRZ > 2$ ). Stretches of 2 or more consecutive residues without any outlier are shown as a green connector. Residues present in the sample, but not in the model, are shown in grey.

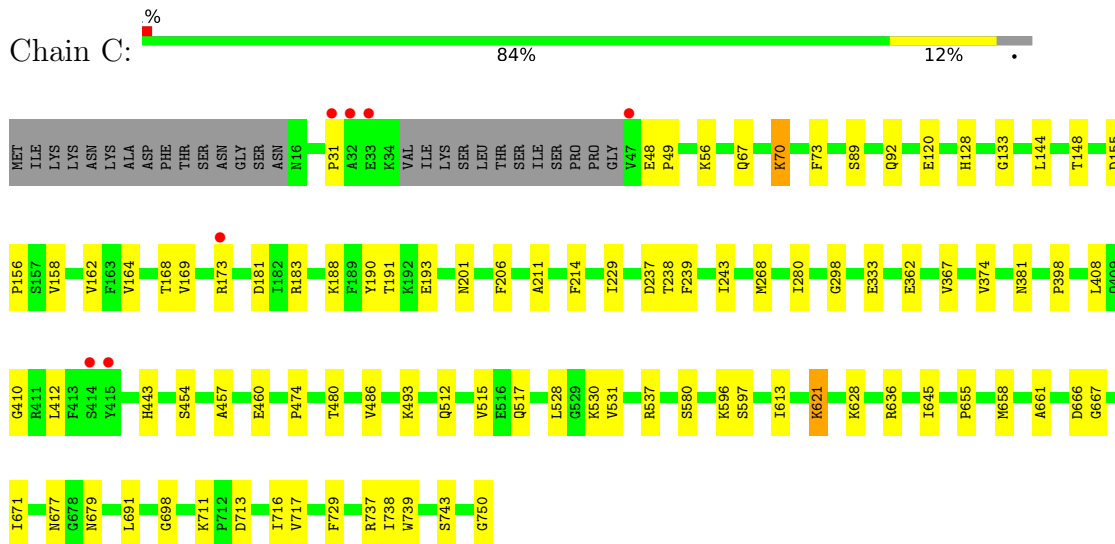
- Molecule 1: Catalase



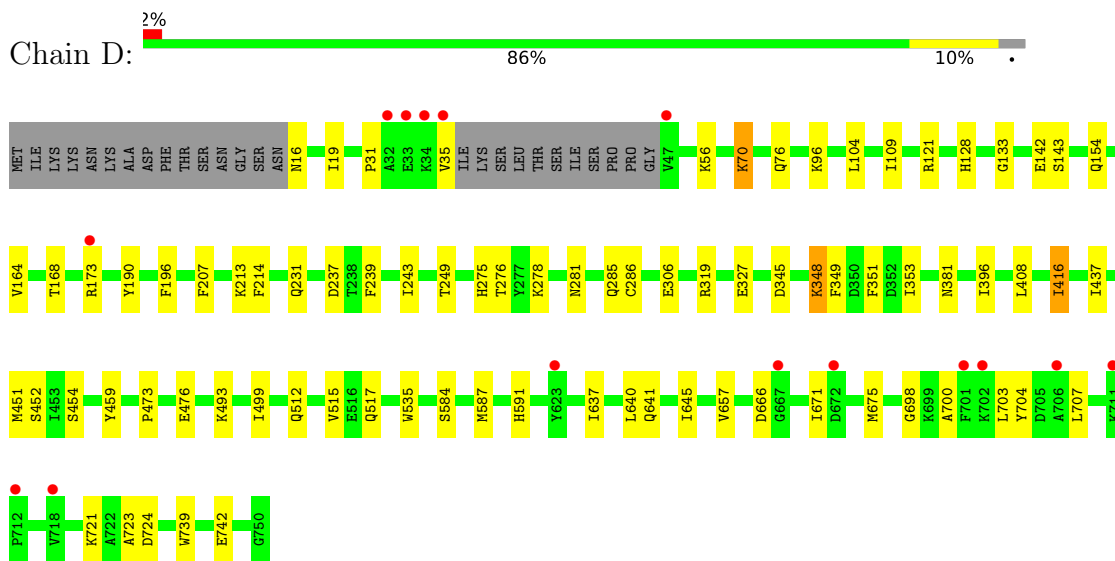
- Molecule 2: Catalase



• Molecule 2: Catalase



• Molecule 2: Catalase



## 4 Data and refinement statistics

Property	Value	Source
Space group	P 1 21 1	Depositor
Cell constants a, b, c, $\alpha$ , $\beta$ , $\gamma$	76.58Å 178.94Å 107.28Å 90.00° 106.70° 90.00°	Depositor
Resolution (Å)	47.49 – 2.10 47.49 – 2.10	Depositor EDS
% Data completeness (in resolution range)	97.1 (47.49-2.10) 97.1 (47.49-2.10)	Depositor EDS
$R_{merge}$	0.06	Depositor
$R_{sym}$	(Not available)	Depositor
$\langle I/\sigma(I) \rangle$ <sup>1</sup>	1.81 (at 2.10Å)	Xtrriage
Refinement program	PHENIX 1.20.1_4487	Depositor
R, $R_{free}$	0.173 , 0.213 0.172 , 0.211	Depositor DCC
$R_{free}$ test set	1262 reflections (0.81%)	wwPDB-VP
Wilson B-factor (Å <sup>2</sup> )	31.8	Xtrriage
Anisotropy	0.383	Xtrriage
Bulk solvent $k_{sol}$ (e/Å <sup>3</sup> ), $B_{sol}$ (Å <sup>2</sup> )	0.33 , 48.5	EDS
L-test for twinning <sup>2</sup>	$\langle  L  \rangle = 0.49$ , $\langle L^2 \rangle = 0.32$	Xtrriage
Estimated twinning fraction	No twinning to report.	Xtrriage
$F_o, F_c$ correlation	0.97	EDS
Total number of atoms	24699	wwPDB-VP
Average B, all atoms (Å <sup>2</sup> )	36.0	wwPDB-VP

Xtrriage's analysis on translational NCS is as follows: *The largest off-origin peak in the Patterson function is 2.82% of the height of the origin peak. No significant pseudotranslation is detected.*

<sup>1</sup>Intensities estimated from amplitudes.

<sup>2</sup>Theoretical values of  $\langle |L| \rangle$ ,  $\langle L^2 \rangle$  for acentric reflections are 0.5, 0.333 respectively for untwinned datasets, and 0.375, 0.2 for perfectly twinned datasets.

## 5 Model quality [i](#)

### 5.1 Standard geometry [i](#)

Bond lengths and bond angles in the following residue types are not validated in this section: CSD, OCS, HEM

The Z score for a bond length (or angle) is the number of standard deviations the observed value is removed from the expected value. A bond length (or angle) with  $|Z| > 5$  is considered an outlier worth inspection. RMSZ is the root-mean-square of all Z scores of the bond lengths (or angles).

Mol	Chain	Bond lengths		Bond angles	
		RMSZ	# Z  >5	RMSZ	# Z  >5
1	A	0.43	0/5918	0.61	1/8024 (0.0%)
2	B	0.43	0/5937	0.61	1/8050 (0.0%)
2	C	0.45	0/5937	0.62	0/8050
2	D	0.43	0/5944	0.61	0/8060
All	All	0.44	0/23736	0.61	2/32184 (0.0%)

There are no bond length outliers.

All (2) bond angle outliers are listed below:

Mol	Chain	Res	Type	Atoms	Z	Observed(°)	Ideal(°)
2	B	660	ASP	CB-CG-OD1	-5.04	113.77	118.30
1	A	309	LEU	CA-CB-CG	5.01	126.82	115.30

There are no chirality outliers.

There are no planarity outliers.

### 5.2 Too-close contacts [i](#)

In the following table, the Non-H and H(model) columns list the number of non-hydrogen atoms and hydrogen atoms in the chain respectively. The H(added) column lists the number of hydrogen atoms added and optimized by MolProbity. The Clashes column lists the number of clashes within the asymmetric unit, whereas Symm-Clashes lists symmetry-related clashes.

Mol	Chain	Non-H	H(model)	H(added)	Clashes	Symm-Clashes
1	A	5774	0	5602	62	0
2	B	5791	0	5622	63	0
2	C	5791	0	5622	57	0
2	D	5798	0	5631	57	0
3	A	43	0	30	1	0

*Continued on next page...*



*Continued from previous page...*

Mol	Chain	Non-H	H(model)	H(added)	Clashes	Symm-Clashes
3	B	43	0	30	0	0
3	C	43	0	30	3	0
3	D	43	0	30	1	0
4	A	343	0	0	5	0
4	B	339	0	0	6	0
4	C	362	0	0	9	0
4	D	329	0	0	3	0
All	All	24699	0	22597	209	0

The all-atom clashscore is defined as the number of clashes found per 1000 atoms (including hydrogen atoms). The all-atom clashscore for this structure is 5.

All (209) close contacts within the same asymmetric unit are listed below, sorted by their clash magnitude.

Atom-1	Atom-2	Interatomic distance (Å)	Clash overlap (Å)
2:C:333:GLU:HG2	2:C:374:VAL:HG22	1.60	0.82
2:B:73:PHE:HE2	2:D:452:SER:HB2	1.50	0.76
1:A:452:SER:HB3	2:C:73:PHE:HE1	1.50	0.75
2:B:73:PHE:CE2	2:D:452:SER:HB2	2.24	0.72
1:A:128:HIS:CE1	1:A:169:VAL:HG22	2.29	0.67
1:A:452:SER:HB3	2:C:73:PHE:CE1	2.30	0.66
2:B:681:LYS:HB3	2:B:707:LEU:HD21	1.79	0.65
2:B:584:SER:O	2:B:591:HIS:HE1	1.83	0.62
2:B:319:ARG:HG2	2:C:229:ILE:HD11	1.81	0.62
1:A:229:ILE:HD11	2:D:319:ARG:HG2	1.82	0.61
2:D:493:LYS:NZ	4:D:901:HOH:O	2.25	0.60
2:C:443:HIS:CE1	2:C:460:GLU:HB2	2.39	0.58
2:C:214:PHE:CD2	3:C:801:HEM:HAC	2.38	0.58
1:A:205:VAL:HG11	1:A:251:HIS:CE1	2.40	0.57
2:C:667:GLY:O	2:C:671:ILE:HG12	2.05	0.56
2:D:666:ASP:OD2	2:D:698:GLY:HA3	2.05	0.56
1:A:117:PHE:O	1:A:120:GLU:HG3	2.06	0.56
2:B:528:LEU:HD11	2:B:540:VAL:HG11	1.88	0.55
2:C:512:GLN:HB2	2:C:517:GLN:HG3	1.89	0.55
4:A:926:HOH:O	2:D:96:LYS:HE3	2.06	0.55
2:B:515:VAL:HG21	2:B:739:TRP:HB3	1.88	0.55
2:D:70:LYS:HD2	2:D:70:LYS:H	1.71	0.55
2:D:721:LYS:HG3	2:D:724:ASP:HB2	1.88	0.55
2:D:584:SER:O	2:D:591:HIS:HE1	1.90	0.55
1:A:243:ILE:HD12	1:A:253:VAL:HG21	1.89	0.54
2:D:587:MET:O	2:D:591:HIS:HB2	2.08	0.54

*Continued on next page...*

*Continued from previous page...*

Atom-1	Atom-2	Interatomic distance (Å)	Clash overlap (Å)
2:B:710:PRO:HG3	2:B:744:VAL:HG21	1.89	0.54
1:A:647:VAL:HG12	1:A:649:GLY:H	1.72	0.54
2:B:515:VAL:HG23	4:B:1192:HOH:O	2.07	0.54
2:C:362:GLU:HG2	2:C:367:VAL:HG23	1.89	0.54
2:B:363:SER:HB2	2:B:579:LEU:HD21	1.89	0.54
1:A:31:PRO:HG3	2:D:535:TRP:CD2	2.43	0.53
2:B:381:ASN:HB2	2:D:454:SER:O	2.09	0.53
2:D:70:LYS:HD2	2:D:70:LYS:N	2.24	0.52
2:B:148:THR:HB	2:B:279:MET:HB3	1.90	0.52
2:B:275:HIS:CG	2:B:408:LEU:HB2	2.44	0.52
1:A:454:SER:O	2:C:381:ASN:HB2	2.10	0.52
2:D:721:LYS:NZ	2:D:723:ALA:H	2.07	0.52
2:B:443:HIS:CE1	2:B:460:GLU:HB2	2.45	0.52
2:D:704:TYR:HA	2:D:707:LEU:HD12	1.92	0.52
2:D:276:THR:HG21	2:D:353:ILE:HD12	1.92	0.51
1:A:19:ILE:HG12	2:D:499:ILE:HG21	1.93	0.51
2:B:51:MET:HE3	2:B:55:ASP:HB2	1.92	0.51
1:A:164:VAL:HG22	1:A:187:THR:HG23	1.93	0.50
2:B:341:ILE:HD11	2:B:360:ILE:HD13	1.93	0.50
2:D:703:LEU:HD23	2:D:707:LEU:HD11	1.94	0.50
1:A:584:SER:O	1:A:591:HIS:HE1	1.95	0.50
2:C:128:HIS:HA	2:C:168:THR:O	2.12	0.50
2:D:56:LYS:HD2	2:D:327:GLU:CD	2.31	0.50
2:C:613:ILE:HD12	2:C:645:ILE:HD13	1.93	0.50
2:B:682:HIS:CD2	2:C:750:GLY:HA2	2.47	0.50
1:A:52:PRO:HB3	1:A:380:ASP:HA	1.93	0.49
2:C:486:VAL:HA	4:C:1163:HOH:O	2.12	0.49
2:B:634:VAL:HG13	2:B:650:THR:HG22	1.95	0.49
2:C:133:GLY:HA2	2:C:164:VAL:O	2.11	0.49
2:C:515:VAL:HG21	2:C:739:TRP:HB3	1.94	0.49
1:A:150:ALA:HA	4:A:1002:HOH:O	2.13	0.49
1:A:502:TYR:HA	1:A:505:PRO:HG2	1.94	0.49
2:B:636:ARG:HD2	2:B:644:GLU:HG2	1.95	0.49
1:A:393:PRO:HD2	1:A:415:TYR:CG	2.47	0.49
2:B:473:PRO:HD2	2:B:476:GLU:HG3	1.95	0.49
2:B:405:ASP:HB3	2:B:408:LEU:HB3	1.95	0.49
1:A:533:ARG:HD3	1:A:535:TRP:CH2	2.48	0.48
1:A:381:ASN:HB2	2:C:454:SER:O	2.13	0.48
2:B:339:GLN:HG3	2:B:367:VAL:HG22	1.95	0.48
2:B:667:GLY:O	2:B:671:ILE:HG12	2.13	0.48
2:B:672:ASP:O	2:B:676:LYS:HG3	2.14	0.48

*Continued on next page...*

*Continued from previous page...*

Atom-1	Atom-2	Interatomic distance (Å)	Clash overlap (Å)
2:B:677:ASN:OD1	2:B:679:ASN:HB2	2.14	0.48
1:A:443:HIS:CE1	1:A:460:GLU:HB2	2.49	0.48
2:B:47:VAL:HB	2:B:48:GLU:OE2	2.13	0.48
1:A:449[A]:HIS:ND1	4:A:913:HOH:O	2.35	0.48
2:C:67:GLN:O	2:C:70:LYS:HG2	2.13	0.48
1:A:535:TRP:CD2	2:D:31:PRO:HG3	2.49	0.47
1:A:685:ILE:HG13	1:A:707:LEU:HD13	1.96	0.47
2:B:169:VAL:HG21	2:B:182:ILE:HB	1.96	0.47
2:C:531:VAL:O	2:C:537:ARG:NH1	2.48	0.47
2:C:713:ASP:OD1	2:C:716:ILE:HG12	2.14	0.47
2:B:50:MET:HG2	2:B:323:TRP:CD1	2.49	0.47
1:A:702:LYS:HE3	1:A:702:LYS:HB2	1.56	0.47
2:C:238:THR:HB	2:D:459:TYR:CE1	2.50	0.47
1:A:715:GLY:HA2	1:A:732:VAL:HG11	1.96	0.46
2:C:173[A]:ARG:HD3	4:C:1044:HOH:O	2.13	0.46
1:A:499:ILE:HG21	2:D:19:ILE:HG13	1.96	0.46
2:D:345:ASP:OD1	2:D:348:LYS:NZ	2.37	0.46
2:D:515:VAL:HG21	2:D:739:TRP:HB3	1.97	0.46
2:D:214:PHE:CD2	3:D:801:HEM:CAC	2.98	0.46
4:A:926:HOH:O	2:D:96:LYS:CE	2.63	0.46
2:C:530:LYS:HE3	4:C:1196:HOH:O	2.15	0.46
2:D:109:ILE:HG21	4:D:1082:HOH:O	2.15	0.46
2:D:128:HIS:HA	2:D:168:THR:O	2.16	0.46
2:B:213:LYS:HD3	2:C:92:GLN:HA	1.97	0.46
2:C:48:GLU:HG3	2:C:49:PRO:HD2	1.98	0.46
2:D:239:PHE:O	2:D:243:ILE:HG12	2.16	0.46
1:A:51:MET:HE3	1:A:55:ASP:HB3	1.96	0.46
2:D:16:ASN:OD1	2:D:19:ILE:HD12	2.15	0.46
1:A:513:THR:O	1:A:517:GLN:HG3	2.16	0.46
2:B:173[B]:ARG:NH1	4:B:941:HOH:O	2.49	0.46
1:A:356:PRO:HG3	1:A:407:LEU:HB2	1.97	0.45
1:A:362:GLU:HG2	1:A:367:VAL:HG23	1.98	0.45
1:A:728:ALA:O	1:A:732:VAL:HG23	2.16	0.45
2:B:670:SER:O	2:B:674:LEU:HG	2.17	0.45
1:A:275:HIS:CG	1:A:408:LEU:HB2	2.52	0.45
1:A:222:LYS:HE3	2:D:121:ARG:NH2	2.31	0.45
1:A:472:ALA:O	2:C:89:SER:HA	2.17	0.45
2:C:628:LYS:NZ	4:C:944:HOH:O	2.50	0.45
2:C:528:LEU:HD23	2:C:528:LEU:HA	1.72	0.45
2:D:173[A]:ARG:NH1	4:D:939:HOH:O	2.50	0.45
2:B:713:ASP:OD1	2:B:716:ILE:HG12	2.17	0.45

*Continued on next page...*

*Continued from previous page...*

Atom-1	Atom-2	Interatomic distance (Å)	Clash overlap (Å)
2:D:640:LEU:HD12	2:D:641:GLN:N	2.32	0.45
1:A:222:LYS:HE3	2:D:121:ARG:HH21	1.82	0.45
1:A:636:ARG:HH11	1:A:636:ARG:HG3	1.81	0.45
1:A:162:VAL:HA	1:A:188:LYS:O	2.17	0.44
1:A:211:ALA:CB	1:A:410:GLY:HA3	2.47	0.44
2:C:181:ASP:O	2:C:183:ARG:NH1	2.50	0.44
1:A:662:VAL:O	1:A:694:ILE:HA	2.18	0.44
2:C:162:VAL:HA	2:C:188:LYS:O	2.17	0.44
1:A:92:GLN:HA	2:D:213:LYS:HD3	1.99	0.44
2:B:133:GLY:HA2	2:B:164:VAL:O	2.18	0.44
2:C:193[B]:GLU:OE2	2:C:398:PRO:HB2	2.17	0.44
1:A:689:LYS:HZ2	1:A:750:GLY:C	2.21	0.44
2:B:251:HIS:O	2:B:254:MET:HB2	2.18	0.44
2:C:206:PHE:CG	3:C:801:HEM:HAB	2.52	0.44
2:C:679:ASN:ND2	4:C:945:HOH:O	2.50	0.44
2:B:128:HIS:CE1	2:B:169:VAL:HG22	2.53	0.44
2:B:587:MET:O	2:B:591:HIS:HB2	2.18	0.44
2:B:451:MET:HG3	2:D:451:MET:HE1	2.00	0.43
2:B:584:SER:O	2:B:591:HIS:CE1	2.68	0.43
2:C:155:ASP:HB3	2:C:158:VAL:HG23	1.98	0.43
2:D:671:ILE:HD12	2:D:700:ALA:HA	2.00	0.43
1:A:56:LYS:HG2	1:A:327:GLU:HG2	1.99	0.43
1:A:143:SER:HB2	1:A:154:GLN:O	2.19	0.43
2:C:268:MET:HA	2:C:298:GLY:O	2.18	0.43
1:A:436:PRO:HD3	4:C:955:HOH:O	2.18	0.43
2:C:666:ASP:OD2	2:C:698:GLY:HA3	2.18	0.43
2:D:512:GLN:HB2	2:D:517:GLN:HG3	2.00	0.43
1:A:712:PRO:HB3	1:A:716:ILE:HB	2.00	0.43
2:C:661:ALA:HB1	2:C:729:PHE:CZ	2.54	0.43
2:D:190:TYR:HB3	2:D:437:ILE:HG12	2.00	0.43
2:C:239:PHE:O	2:C:243:ILE:HG12	2.18	0.43
2:D:703:LEU:O	2:D:707:LEU:HG	2.19	0.43
1:A:631:ALA:O	1:A:650:THR:HA	2.19	0.42
2:C:193[B]:GLU:HG3	4:C:936:HOH:O	2.18	0.42
2:D:637:ILE:HG13	2:D:645:ILE:HB	2.01	0.42
1:A:249:THR:O	1:A:253:VAL:HG23	2.20	0.42
2:B:162:VAL:HA	2:B:188:LYS:O	2.19	0.42
2:B:689:LYS:HB3	2:B:689:LYS:HE3	1.90	0.42
2:C:596:LYS:O	2:C:597:SER:CB	2.67	0.42
2:C:737:ARG:HA	2:C:737:ARG:HD3	1.87	0.42
2:D:473:PRO:HD2	2:D:476:GLU:OE1	2.19	0.42

*Continued on next page...*

*Continued from previous page...*

Atom-1	Atom-2	Interatomic distance (Å)	Clash overlap (Å)
2:B:530:LYS:NZ	4:B:927:HOH:O	2.43	0.42
2:C:621:LYS:HD2	2:C:621:LYS:HA	1.89	0.42
2:D:275:HIS:CG	2:D:408:LEU:HB2	2.55	0.42
1:A:452:SER:HB2	4:A:1050:HOH:O	2.20	0.42
2:C:188:LYS:HD2	2:C:190:TYR:CZ	2.55	0.42
2:C:144:LEU:HD23	2:C:144:LEU:HA	1.82	0.42
2:D:281:ASN:ND2	2:D:285:GLN:HB2	2.34	0.42
2:B:431:ILE:O	2:B:435:LYS:HG3	2.20	0.42
2:B:506:ARG:NH1	2:B:572:LEU:HD13	2.35	0.42
1:A:31:PRO:HG3	2:D:535:TRP:CG	2.55	0.42
1:A:415:TYR:CZ	3:A:801:HEM:ND	2.88	0.42
2:B:60:ASN:ND2	2:B:376:ASN:O	2.46	0.42
2:B:307:ALA:O	2:B:311:THR:HG23	2.20	0.42
2:B:587:MET:HE3	2:B:587:MET:HB2	1.92	0.42
2:B:634:VAL:HG22	4:C:902:HOH:O	2.19	0.42
2:D:143:SER:HB2	2:D:154:GLN:O	2.20	0.42
1:A:490:LYS:HG2	2:D:104:LEU:HD11	2.02	0.41
2:B:685:ILE:HD11	2:B:707:LEU:HD22	2.02	0.41
2:C:474:PRO:HG3	2:C:480:THR:CG2	2.50	0.41
2:C:148:THR:HA	2:C:280:ILE:O	2.21	0.41
2:C:677:ASN:OD1	2:C:679:ASN:HB2	2.20	0.41
1:A:363:SER:HB2	1:A:579:LEU:HD21	2.03	0.41
1:A:444:GLN:O	1:A:445:ARG:HD3	2.20	0.41
2:B:535:TRP:CG	2:C:31:PRO:HG3	2.55	0.41
2:D:349:PHE:C	2:D:351:PHE:H	2.23	0.41
1:A:386:THR:O	1:A:389:VAL:HG12	2.21	0.41
2:B:224:GLU:OE2	2:B:238:THR:HG23	2.20	0.41
2:C:691:LEU:O	2:C:738:ILE:HG12	2.21	0.41
2:D:133:GLY:HA2	2:D:164:VAL:O	2.20	0.41
2:D:207:PHE:O	2:D:249:THR:HA	2.21	0.41
1:A:448:MET:HG3	1:A:449[B]:HIS:CD2	2.56	0.41
2:C:408:LEU:O	2:C:412:LEU:HG	2.21	0.41
2:C:457:ALA:HA	4:C:1166:HOH:O	2.20	0.41
1:A:151:GLU:HB2	1:A:193[B]:GLU:OE1	2.20	0.41
1:A:459:TYR:CE1	2:B:238:THR:HB	2.55	0.41
2:B:115:THR:HG21	2:D:416:ILE:HD11	2.03	0.41
2:C:655:PRO:HD2	2:C:658:MET:SD	2.61	0.41
1:A:174[B]:GLY:HA2	2:D:231:GLN:HG2	2.01	0.41
2:C:155:ASP:HA	2:C:156:PRO:HD2	1.95	0.41
1:A:445:ARG:O	2:C:120:GLU:HG2	2.21	0.41
2:D:278:LYS:HD3	2:D:286:CYS:SG	2.61	0.41

*Continued on next page...*

Continued from previous page...

Atom-1	Atom-2	Interatomic distance (Å)	Clash overlap (Å)
1:A:531:VAL:O	1:A:537:ARG:NH1	2.54	0.41
2:B:268:MET:HA	2:B:298:GLY:O	2.20	0.41
2:B:454:SER:O	2:D:381:ASN:HB2	2.20	0.41
2:B:595:LEU:HD21	2:B:730:CYS:HB3	2.03	0.41
2:B:744:VAL:HG12	4:B:999:HOH:O	2.19	0.41
2:C:128:HIS:CE1	2:C:169:VAL:HG22	2.55	0.41
2:C:211:ALA:CB	2:C:410:GLY:HA3	2.51	0.41
2:D:196:PHE:HD1	2:D:396:ILE:HA	1.86	0.41
2:D:306:GLU:HG3	2:D:657:VAL:HG12	2.02	0.41
2:B:73:PHE:HE2	2:D:452:SER:CB	2.25	0.40
2:B:671:ILE:O	2:B:675:MET:HE2	2.21	0.40
1:A:205:VAL:HG11	1:A:251:HIS:ND1	2.36	0.40
2:C:201:ASN:CG	3:C:801:HEM:HMB2	2.41	0.40
1:A:393:PRO:HD2	1:A:415:TYR:CD1	2.55	0.40
2:B:208:ILE:HG22	4:B:986:HOH:O	2.21	0.40
2:B:281:ASN:ND2	2:B:285:GLN:HB2	2.36	0.40
2:B:728:ALA:O	2:B:732:VAL:HG23	2.20	0.40
2:B:128:HIS:HA	2:B:168:THR:O	2.21	0.40
2:B:372:LYS:NZ	4:B:953:HOH:O	2.54	0.40

There are no symmetry-related clashes.

## 5.3 Torsion angles [i](#)

### 5.3.1 Protein backbone [i](#)

In the following table, the Percentiles column shows the percent Ramachandran outliers of the chain as a percentile score with respect to all X-ray entries followed by that with respect to entries of similar resolution.

The Analysed column shows the number of residues for which the backbone conformation was analysed, and the total number of residues.

Mol	Chain	Analysed	Favoured	Allowed	Outliers	Percentiles	
1	A	720/750 (96%)	699 (97%)	21 (3%)	0	100	100
2	B	722/750 (96%)	695 (96%)	27 (4%)	0	100	100
2	C	722/750 (96%)	702 (97%)	20 (3%)	0	100	100
2	D	723/750 (96%)	695 (96%)	28 (4%)	0	100	100
All	All	2887/3000 (96%)	2791 (97%)	96 (3%)	0	100	100

There are no Ramachandran outliers to report.

### 5.3.2 Protein sidechains [i](#)

In the following table, the Percentiles column shows the percent sidechain outliers of the chain as a percentile score with respect to all X-ray entries followed by that with respect to entries of similar resolution.

The Analysed column shows the number of residues for which the sidechain conformation was analysed, and the total number of residues.

Mol	Chain	Analysed	Rotameric	Outliers	Percentiles	
1	A	628/651 (96%)	619 (99%)	9 (1%)	67	73
2	B	630/651 (97%)	620 (98%)	10 (2%)	62	69
2	C	630/651 (97%)	619 (98%)	11 (2%)	60	67
2	D	631/651 (97%)	622 (99%)	9 (1%)	67	73
All	All	2519/2604 (97%)	2480 (98%)	39 (2%)	65	71

All (39) residues with a non-rotameric sidechain are listed below:

Mol	Chain	Res	Type
1	A	17	LYS
1	A	76	GLN
1	A	143	SER
1	A	237	ASP
1	A	562	LYS
1	A	580	SER
1	A	583	ARG
1	A	587	MET
1	A	743	SER
2	B	59	LYS
2	B	237	ASP
2	B	265	SER
2	B	286	CYS
2	B	414	SER
2	B	449[A]	HIS
2	B	449[B]	HIS
2	B	633	HIS
2	B	650	THR
2	B	743	SER
2	C	56	LYS
2	C	70	LYS
2	C	191	THR

*Continued on next page...*

*Continued from previous page...*

Mol	Chain	Res	Type
2	C	237	ASP
2	C	493	LYS
2	C	580	SER
2	C	621	LYS
2	C	636	ARG
2	C	711	LYS
2	C	717	VAL
2	C	743	SER
2	D	35	VAL
2	D	70	LYS
2	D	76	GLN
2	D	142	GLU
2	D	237	ASP
2	D	348	LYS
2	D	416	ILE
2	D	675	MET
2	D	742	GLU

Sometimes sidechains can be flipped to improve hydrogen bonding and reduce clashes. All (7) such sidechains are listed below:

Mol	Chain	Res	Type
1	A	565	GLN
1	A	591	HIS
2	B	591	HIS
2	C	591	HIS
2	D	76	GLN
2	D	550	GLN
2	D	591	HIS

### 5.3.3 RNA [i](#)

There are no RNA molecules in this entry.

## 5.4 Non-standard residues in protein, DNA, RNA chains [i](#)

4 non-standard protein/DNA/RNA residues are modelled in this entry.

In the following table, the Counts columns list the number of bonds (or angles) for which Mogul statistics could be retrieved, the number of bonds (or angles) that are observed in the model and the number of bonds (or angles) that are defined in the Chemical Component Dictionary. The Link column lists molecule types, if any, to which the group is linked. The Z score for a bond



length (or angle) is the number of standard deviations the observed value is removed from the expected value. A bond length (or angle) with  $|Z| > 2$  is considered an outlier worth inspection. RMSZ is the root-mean-square of all Z scores of the bond lengths (or angles).

Mol	Type	Chain	Res	Link	Bond lengths			Bond angles		
					Counts	RMSZ	# Z  > 2	Counts	RMSZ	# Z  > 2
1	OCS	A	609	1	7,8,9	0.81	0	6,11,13	1.50	1 (16%)
2	CSD	D	609	2	3,7,8	1.02	0	1,8,10	0.21	0
2	CSD	C	609	2	3,7,8	0.86	0	1,8,10	1.56	0
2	CSD	B	609	2	3,7,8	0.92	0	1,8,10	0.73	0

In the following table, the Chirals column lists the number of chiral outliers, the number of chiral centers analysed, the number of these observed in the model and the number defined in the Chemical Component Dictionary. Similar counts are reported in the Torsion and Rings columns. '-' means no outliers of that kind were identified.

Mol	Type	Chain	Res	Link	Chirals	Torsions	Rings
1	OCS	A	609	1	-	1/4/7/9	-
2	CSD	D	609	2	-	2/2/6/8	-
2	CSD	C	609	2	-	0/2/6/8	-
2	CSD	B	609	2	-	2/2/6/8	-

There are no bond length outliers.

All (1) bond angle outliers are listed below:

Mol	Chain	Res	Type	Atoms	Z	Observed(°)	Ideal(°)
1	A	609	OCS	OD2-SG-CB	2.34	109.47	105.74

There are no chirality outliers.

All (5) torsion outliers are listed below:

Mol	Chain	Res	Type	Atoms
1	A	609	OCS	N-CA-CB-SG
2	B	609	CSD	N-CA-CB-SG
2	B	609	CSD	CA-CB-SG-OD1
2	D	609	CSD	N-CA-CB-SG
2	D	609	CSD	CA-CB-SG-OD1

There are no ring outliers.

No monomer is involved in short contacts.

## 5.5 Carbohydrates [i](#)

There are no monosaccharides in this entry.

## 5.6 Ligand geometry [i](#)

4 ligands are modelled in this entry.

In the following table, the Counts columns list the number of bonds (or angles) for which Mogul statistics could be retrieved, the number of bonds (or angles) that are observed in the model and the number of bonds (or angles) that are defined in the Chemical Component Dictionary. The Link column lists molecule types, if any, to which the group is linked. The Z score for a bond length (or angle) is the number of standard deviations the observed value is removed from the expected value. A bond length (or angle) with  $|Z| > 2$  is considered an outlier worth inspection. RMSZ is the root-mean-square of all Z scores of the bond lengths (or angles).

Mol	Type	Chain	Res	Link	Bond lengths			Bond angles		
					Counts	RMSZ	# Z  > 2	Counts	RMSZ	# Z  > 2
3	HEM	D	801	2	41,50,50	2.07	11 (26%)	45,82,82	1.95	15 (33%)
3	HEM	A	801	1	41,50,50	2.43	8 (19%)	45,82,82	2.42	15 (33%)
3	HEM	C	801	2,4	41,50,50	2.67	10 (24%)	45,82,82	2.37	19 (42%)
3	HEM	B	801	2	41,50,50	2.45	10 (24%)	45,82,82	2.42	15 (33%)

In the following table, the Chirals column lists the number of chiral outliers, the number of chiral centers analysed, the number of these observed in the model and the number defined in the Chemical Component Dictionary. Similar counts are reported in the Torsion and Rings columns. '-' means no outliers of that kind were identified.

Mol	Type	Chain	Res	Link	Chirals	Torsions	Rings
3	HEM	D	801	2	-	4/12/54/54	-
3	HEM	A	801	1	-	3/12/54/54	-
3	HEM	C	801	2,4	-	4/12/54/54	-
3	HEM	B	801	2	-	4/12/54/54	-

All (39) bond length outliers are listed below:

Mol	Chain	Res	Type	Atoms	Z	Observed(Å)	Ideal(Å)
3	A	801	HEM	C1D-ND	-9.91	1.18	1.38
3	C	801	HEM	C4B-NB	-9.43	1.19	1.38
3	B	801	HEM	C4B-NB	-8.07	1.22	1.38
3	C	801	HEM	C1D-ND	-7.59	1.23	1.38
3	B	801	HEM	C1D-ND	-6.59	1.25	1.38
3	A	801	HEM	C4B-NB	-6.33	1.25	1.38

*Continued on next page...*

Continued from previous page...

Mol	Chain	Res	Type	Atoms	Z	Observed(Å)	Ideal(Å)
3	C	801	HEM	C1A-NA	5.97	1.48	1.36
3	B	801	HEM	C1A-NA	5.38	1.47	1.36
3	D	801	HEM	C4B-NB	-5.14	1.28	1.38
3	D	801	HEM	C1B-NB	-4.75	1.32	1.40
3	D	801	HEM	C4D-ND	-4.35	1.32	1.40
3	A	801	HEM	C3C-C2C	-4.19	1.34	1.40
3	B	801	HEM	C4A-NA	-3.95	1.28	1.36
3	C	801	HEM	C3C-C2C	-3.80	1.35	1.40
3	D	801	HEM	C1D-ND	-3.79	1.31	1.38
3	A	801	HEM	C1A-NA	3.67	1.43	1.36
3	B	801	HEM	C3C-C2C	-3.60	1.35	1.40
3	B	801	HEM	O2D-CGD	-3.58	1.18	1.30
3	B	801	HEM	O2A-CGA	-3.50	1.19	1.30
3	B	801	HEM	C4D-ND	-3.45	1.34	1.40
3	D	801	HEM	O2D-CGD	-3.43	1.19	1.30
3	C	801	HEM	C4D-ND	-3.31	1.34	1.40
3	C	801	HEM	C4A-NA	-3.29	1.29	1.36
3	C	801	HEM	O2D-CGD	-3.27	1.19	1.30
3	A	801	HEM	O2A-CGA	-3.19	1.20	1.30
3	D	801	HEM	O2A-CGA	-3.17	1.20	1.30
3	A	801	HEM	O2D-CGD	-3.11	1.20	1.30
3	C	801	HEM	O2A-CGA	-3.07	1.20	1.30
3	D	801	HEM	C3C-C2C	-2.99	1.36	1.40
3	D	801	HEM	C1A-NA	2.98	1.42	1.36
3	A	801	HEM	C4D-ND	-2.98	1.35	1.40
3	D	801	HEM	C3D-C2D	-2.84	1.30	1.36
3	C	801	HEM	C3D-C2D	-2.62	1.31	1.36
3	D	801	HEM	C3B-C2B	-2.55	1.32	1.37
3	D	801	HEM	C1B-C2B	-2.47	1.39	1.44
3	A	801	HEM	C3D-C2D	-2.26	1.31	1.36
3	C	801	HEM	C3B-C2B	-2.11	1.33	1.37
3	B	801	HEM	C2C-C1C	-2.09	1.37	1.42
3	B	801	HEM	C3D-C2D	-2.01	1.32	1.36

All (64) bond angle outliers are listed below:

Mol	Chain	Res	Type	Atoms	Z	Observed(°)	Ideal(°)
3	A	801	HEM	CHA-C4D-ND	7.66	133.85	124.38
3	A	801	HEM	C4D-ND-C1D	7.58	112.90	105.07
3	B	801	HEM	C1B-NB-C4B	6.62	111.91	105.07
3	C	801	HEM	C1B-NB-C4B	6.25	111.53	105.07
3	C	801	HEM	CHA-C4D-ND	6.20	132.04	124.38

Continued on next page...

*Continued from previous page...*

Mol	Chain	Res	Type	Atoms	Z	Observed(°)	Ideal(°)
3	B	801	HEM	CHA-C4D-ND	6.05	131.86	124.38
3	D	801	HEM	C1B-NB-C4B	5.59	110.85	105.07
3	C	801	HEM	CHB-C1B-NB	5.58	131.27	124.38
3	B	801	HEM	C4D-ND-C1D	5.25	110.50	105.07
3	A	801	HEM	C3D-C4D-ND	-4.78	104.84	110.17
3	B	801	HEM	CHD-C1D-ND	4.75	129.59	124.43
3	C	801	HEM	C4D-ND-C1D	4.67	109.89	105.07
3	B	801	HEM	CHB-C1B-NB	4.61	130.08	124.38
3	A	801	HEM	CHD-C1D-ND	4.38	129.19	124.43
3	D	801	HEM	CHC-C4B-NB	4.34	129.14	124.43
3	C	801	HEM	O2A-CGA-O1A	-3.70	114.08	123.30
3	C	801	HEM	C2B-C1B-NB	-3.57	105.61	109.84
3	A	801	HEM	C1B-NB-C4B	3.47	108.65	105.07
3	B	801	HEM	CHC-C4B-NB	3.43	128.16	124.43
3	B	801	HEM	O2A-CGA-O1A	-3.40	114.82	123.30
3	D	801	HEM	O2D-CGD-O1D	-3.40	114.83	123.30
3	B	801	HEM	O2D-CGD-O1D	-3.28	115.13	123.30
3	C	801	HEM	CHD-C1D-ND	3.27	127.98	124.43
3	D	801	HEM	CHD-C1D-ND	3.23	127.94	124.43
3	C	801	HEM	O2A-CGA-CBA	3.16	124.19	114.03
3	D	801	HEM	O2A-CGA-O1A	-3.02	115.76	123.30
3	A	801	HEM	O2A-CGA-O1A	-3.00	115.82	123.30
3	D	801	HEM	CHB-C1B-NB	2.95	128.03	124.38
3	C	801	HEM	C3C-C4C-NC	-2.94	105.40	110.94
3	D	801	HEM	O2D-CGD-CBD	2.92	123.40	114.03
3	B	801	HEM	O2D-CGD-CBD	2.88	123.30	114.03
3	D	801	HEM	C3C-C4C-NC	-2.88	105.51	110.94
3	A	801	HEM	O2A-CGA-CBA	2.87	123.24	114.03
3	B	801	HEM	O2A-CGA-CBA	2.80	123.04	114.03
3	A	801	HEM	O2D-CGD-O1D	-2.78	116.37	123.30
3	C	801	HEM	CHA-C4D-C3D	-2.75	120.16	125.33
3	B	801	HEM	CHA-C4D-C3D	-2.72	120.23	125.33
3	B	801	HEM	C3C-C4C-NC	-2.63	105.97	110.94
3	B	801	HEM	C2B-C1B-NB	-2.61	106.75	109.84
3	C	801	HEM	C4A-C3A-C2A	2.60	108.81	107.00
3	A	801	HEM	CHD-C1D-C2D	-2.59	120.94	124.98
3	D	801	HEM	CHD-C1D-C2D	-2.57	120.96	124.98
3	A	801	HEM	O2D-CGD-CBD	2.54	122.18	114.03
3	D	801	HEM	O2A-CGA-CBA	2.51	122.10	114.03
3	D	801	HEM	C4B-CHC-C1C	2.51	125.87	122.56
3	D	801	HEM	CAD-C3D-C4D	2.45	128.93	124.66
3	A	801	HEM	CHB-C1B-NB	2.44	127.40	124.38

*Continued on next page...*

Continued from previous page...

Mol	Chain	Res	Type	Atoms	Z	Observed(°)	Ideal(°)
3	A	801	HEM	CBD-CAD-C3D	-2.43	105.87	112.63
3	C	801	HEM	CBD-CAD-C3D	-2.41	105.93	112.63
3	C	801	HEM	O2D-CGD-O1D	-2.36	117.42	123.30
3	C	801	HEM	CBB-CAB-C3B	-2.28	116.29	127.62
3	C	801	HEM	CHC-C4B-NB	2.26	126.88	124.43
3	A	801	HEM	CHA-C4D-C3D	-2.23	121.14	125.33
3	D	801	HEM	CHA-C4D-ND	2.22	127.13	124.38
3	B	801	HEM	CHD-C1D-C2D	-2.19	121.56	124.98
3	A	801	HEM	CHC-C4B-NB	2.15	126.76	124.43
3	C	801	HEM	C3D-C4D-ND	-2.13	107.80	110.17
3	D	801	HEM	CHA-C4D-C3D	-2.12	121.36	125.33
3	C	801	HEM	CMD-C2D-C1D	2.10	128.24	125.04
3	A	801	HEM	C3C-C4C-NC	-2.06	107.05	110.94
3	B	801	HEM	C3D-C4D-ND	-2.06	107.88	110.17
3	D	801	HEM	CBB-CAB-C3B	-2.03	117.52	127.62
3	C	801	HEM	O2D-CGD-CBD	2.02	120.51	114.03
3	C	801	HEM	CHD-C1D-C2D	-2.01	121.84	124.98

There are no chirality outliers.

All (15) torsion outliers are listed below:

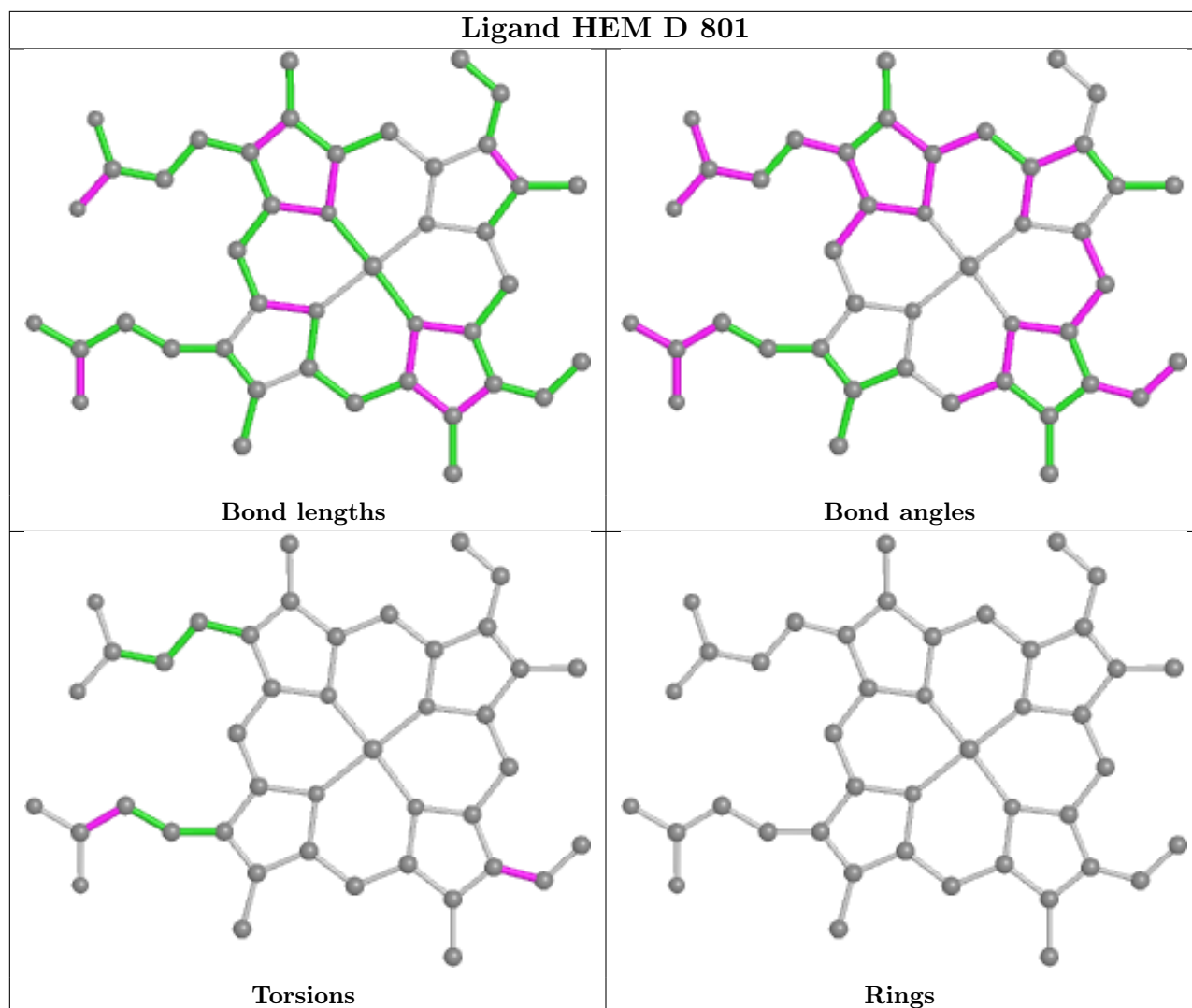
Mol	Chain	Res	Type	Atoms
3	B	801	HEM	C2B-C3B-CAB-CBB
3	B	801	HEM	C4B-C3B-CAB-CBB
3	C	801	HEM	C2B-C3B-CAB-CBB
3	C	801	HEM	C4B-C3B-CAB-CBB
3	B	801	HEM	CAA-CBA-CGA-O2A
3	D	801	HEM	CAA-CBA-CGA-O1A
3	D	801	HEM	CAA-CBA-CGA-O2A
3	B	801	HEM	CAA-CBA-CGA-O1A
3	A	801	HEM	CAA-CBA-CGA-O1A
3	A	801	HEM	CAA-CBA-CGA-O2A
3	D	801	HEM	C2B-C3B-CAB-CBB
3	C	801	HEM	CAA-CBA-CGA-O2A
3	D	801	HEM	C4B-C3B-CAB-CBB
3	C	801	HEM	CAA-CBA-CGA-O1A
3	A	801	HEM	CAD-CBD-CGD-O1D

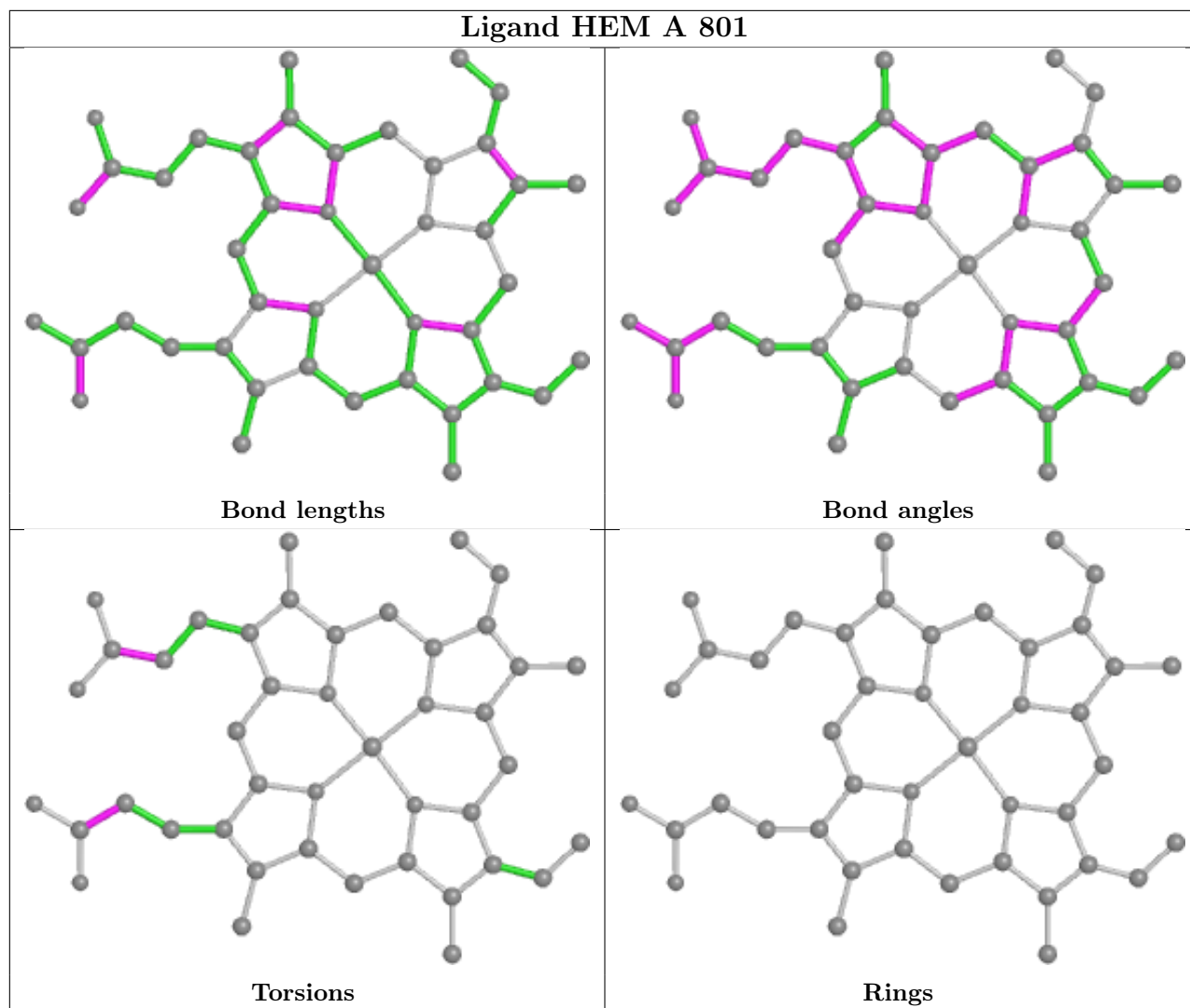
There are no ring outliers.

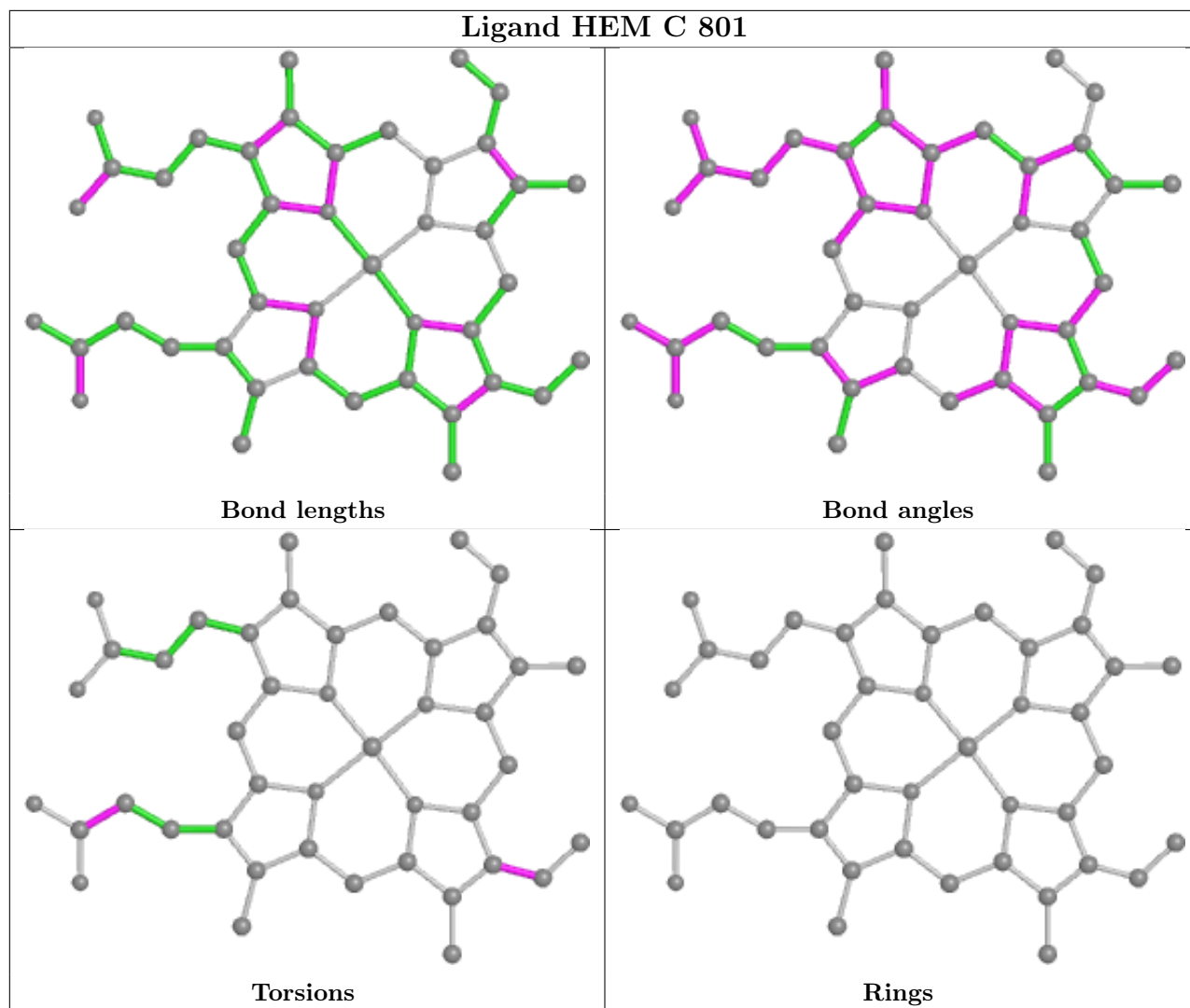
3 monomers are involved in 5 short contacts:

Mol	Chain	Res	Type	Clashes	Symm-Clashes
3	D	801	HEM	1	0
3	A	801	HEM	1	0
3	C	801	HEM	3	0

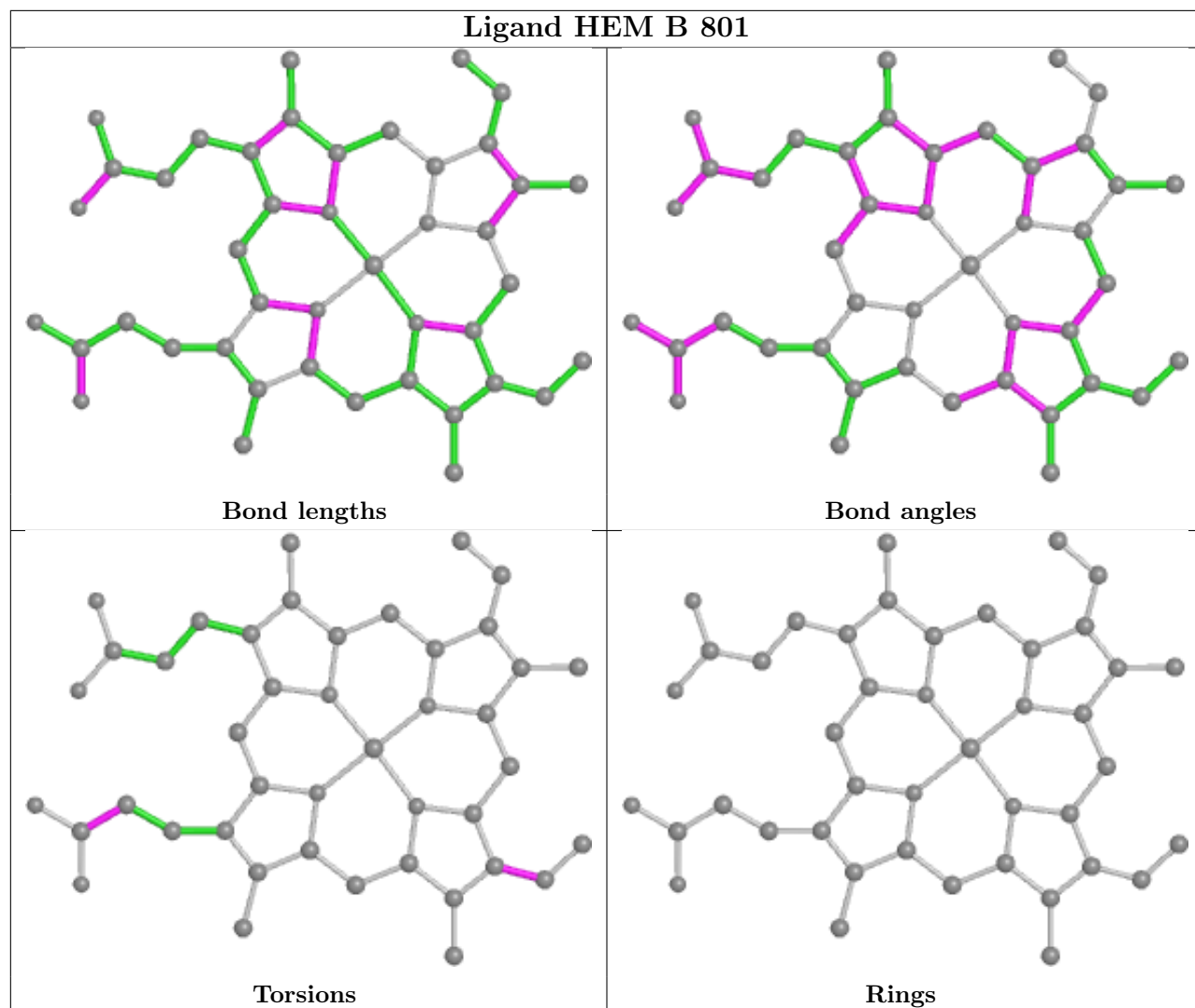
The following is a two-dimensional graphical depiction of Mogul quality analysis of bond lengths, bond angles, torsion angles, and ring geometry for all instances of the Ligand of Interest. In addition, ligands with molecular weight > 250 and outliers as shown on the validation Tables will also be included. For torsion angles, if less than 5% of the Mogul distribution of torsion angles is within 10 degrees of the torsion angle in question, then that torsion angle is considered an outlier. Any bond that is central to one or more torsion angles identified as an outlier by Mogul will be highlighted in the graph. For rings, the root-mean-square deviation (RMSD) between the ring in question and similar rings identified by Mogul is calculated over all ring torsion angles. If the average RMSD is greater than 60 degrees and the minimal RMSD between the ring in question and any Mogul-identified rings is also greater than 60 degrees, then that ring is considered an outlier. The outliers are highlighted in purple. The color gray indicates Mogul did not find sufficient equivalents in the CSD to analyse the geometry.











## 5.7 Other polymers [i](#)

There are no such residues in this entry.

## 5.8 Polymer linkage issues [i](#)

There are no chain breaks in this entry.

## 6 Fit of model and data [i](#)

### 6.1 Protein, DNA and RNA chains [i](#)

In the following table, the column labelled ‘#RSRZ > 2’ contains the number (and percentage) of RSRZ outliers, followed by percent RSRZ outliers for the chain as percentile scores relative to all X-ray entries and entries of similar resolution. The OWAB column contains the minimum, median, 95<sup>th</sup> percentile and maximum values of the occupancy-weighted average B-factor per residue. The column labelled ‘Q < 0.9’ lists the number of (and percentage) of residues with an average occupancy less than 0.9.

Mol	Chain	Analysed	<RSRZ>	#RSRZ>2	OWAB(Å <sup>2</sup> )	Q<0.9
1	A	720/750 (96%)	-0.15	12 (1%) 70 74	21, 34, 51, 78	0
2	B	722/750 (96%)	-0.02	26 (3%) 42 49	20, 35, 63, 97	0
2	C	722/750 (96%)	-0.19	7 (0%) 82 85	20, 33, 52, 84	0
2	D	723/750 (96%)	-0.08	15 (2%) 63 68	21, 35, 57, 95	0
All	All	2887/3000 (96%)	-0.11	60 (2%) 63 68	20, 34, 56, 97	0

All (60) RSRZ outliers are listed below:

Mol	Chain	Res	Type	RSRZ
2	D	47	VAL	7.7
1	A	32	ALA	6.9
1	A	16	ASN	5.8
2	B	47	VAL	5.6
2	C	47	VAL	5.3
2	D	35	VAL	4.9
2	D	34	LYS	4.8
2	B	34	LYS	4.8
1	A	47	VAL	4.4
2	B	32	ALA	4.0
2	B	701	PHE	3.8
2	B	33	GLU	3.7
2	B	640	LEU	3.6
2	B	605	ALA	3.3
2	D	711	LYS	3.2
2	B	674	LEU	3.2
2	C	32	ALA	3.2
2	C	33	GLU	3.2
2	B	721	LYS	3.2
2	D	718	VAL	3.2
2	B	173[A]	ARG	3.2

*Continued on next page...*

*Continued from previous page...*

Mol	Chain	Res	Type	RSRZ
2	C	173[A]	ARG	3.1
2	B	702	LYS	3.1
2	B	638	THR	3.1
2	D	701	PHE	3.1
2	D	32	ALA	3.0
2	D	33	GLU	3.0
2	B	608	VAL	2.9
2	D	706	ALA	2.8
2	D	623	TYR	2.8
2	D	672	ASP	2.7
2	D	667	GLY	2.5
2	B	669	ASP	2.5
1	A	612	ALA	2.5
1	A	17	LYS	2.5
1	A	73	PHE	2.5
2	B	668	GLU	2.4
2	B	698	GLY	2.4
2	D	702	LYS	2.4
2	B	645	ILE	2.4
2	C	415	TYR	2.4
2	B	48	GLU	2.3
1	A	30	ALA	2.3
1	A	27	GLU	2.3
2	B	643	ASN	2.2
2	B	699	LYS	2.2
2	B	613	ILE	2.2
2	B	670	SER	2.2
2	B	720	ASP	2.2
2	B	700	ALA	2.1
2	D	173[A]	ARG	2.1
2	C	31	PRO	2.1
1	A	31	PRO	2.1
2	D	712	PRO	2.1
1	A	721	LYS	2.1
1	A	179	VAL	2.0
2	B	16	ASN	2.0
2	C	414	SER	2.0
1	A	565	GLN	2.0
2	B	565	GLN	2.0

## 6.2 Non-standard residues in protein, DNA, RNA chains [i](#)

In the following table, the Atoms column lists the number of modelled atoms in the group and the number defined in the chemical component dictionary. The B-factors column lists the minimum, median, 95<sup>th</sup> percentile and maximum values of B factors of atoms in the group. The column labelled 'Q< 0.9' lists the number of atoms with occupancy less than 0.9.

Mol	Type	Chain	Res	Atoms	RSCC	RSR	B-factors(Å <sup>2</sup> )	Q<0.9
2	CSD	D	609	8/9	0.84	0.20	54,60,75,83	0
2	CSD	B	609	8/9	0.89	0.22	65,68,70,72	0
1	OCS	A	609	9/10	0.90	0.14	41,48,64,73	0
2	CSD	C	609	8/9	0.94	0.16	43,47,56,61	0

## 6.3 Carbohydrates [i](#)

There are no monosaccharides in this entry.

## 6.4 Ligands [i](#)

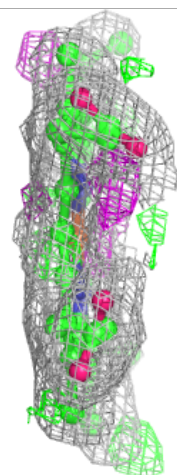
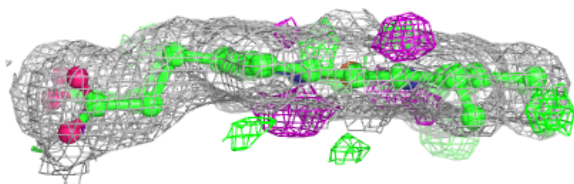
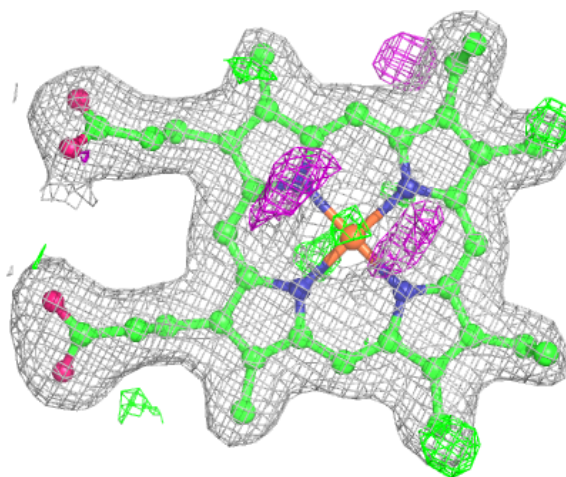
In the following table, the Atoms column lists the number of modelled atoms in the group and the number defined in the chemical component dictionary. The B-factors column lists the minimum, median, 95<sup>th</sup> percentile and maximum values of B factors of atoms in the group. The column labelled 'Q< 0.9' lists the number of atoms with occupancy less than 0.9.

Mol	Type	Chain	Res	Atoms	RSCC	RSR	B-factors(Å <sup>2</sup> )	Q<0.9
3	HEM	B	801	43/43	0.96	0.16	18,25,31,31	0
3	HEM	C	801	43/43	0.96	0.16	15,25,29,32	0
3	HEM	A	801	43/43	0.97	0.14	23,27,32,35	0
3	HEM	D	801	43/43	0.97	0.13	19,24,28,32	0

The following is a graphical depiction of the model fit to experimental electron density of all instances of the Ligand of Interest. In addition, ligands with molecular weight > 250 and outliers as shown on the geometry validation Tables will also be included. Each fit is shown from different orientation to approximate a three-dimensional view.

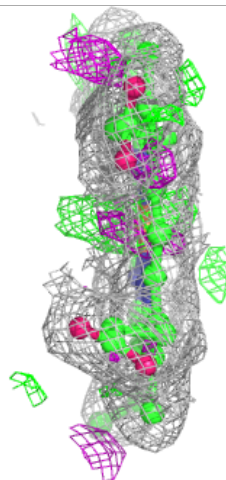
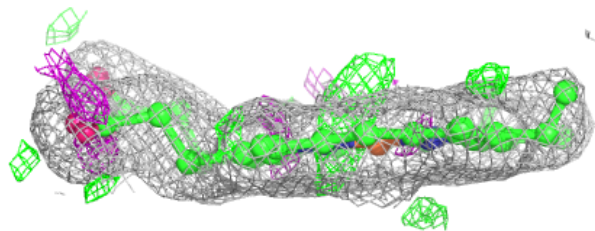
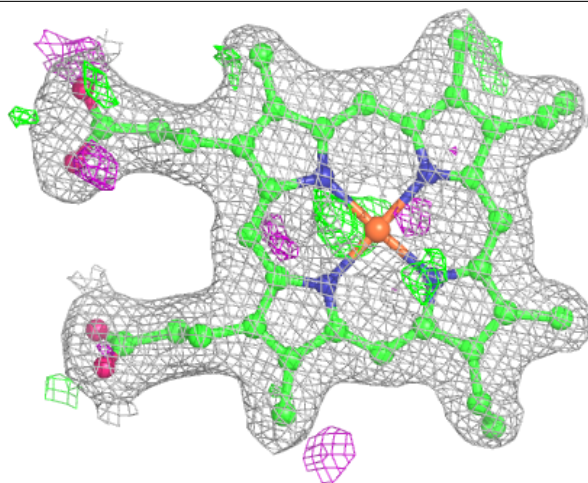
**Electron density around HEM B 801:**

$2mF_o-DF_c$  (at 0.7 rmsd) in gray  
 $mF_o-DF_c$  (at 3 rmsd) in purple (negative)  
and green (positive)



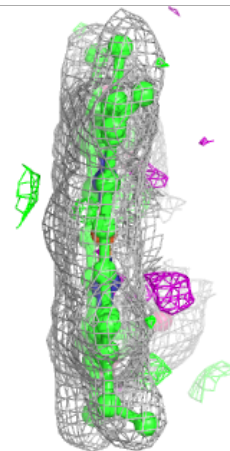
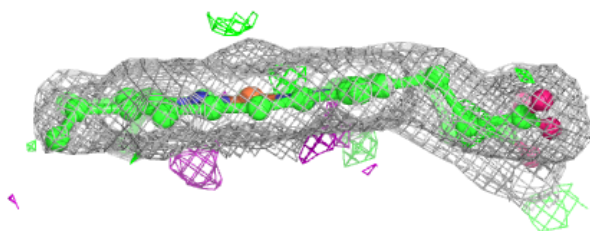
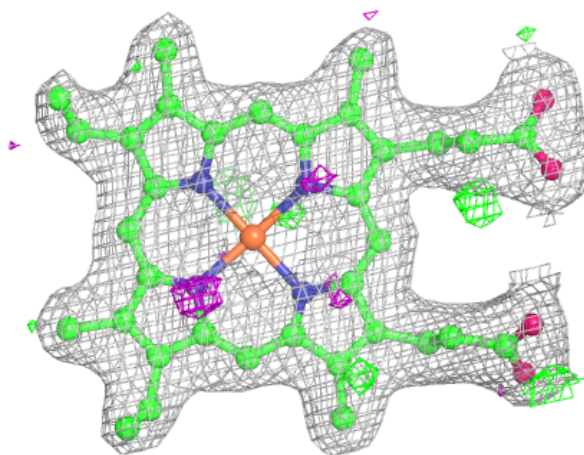
**Electron density around HEM C 801:**

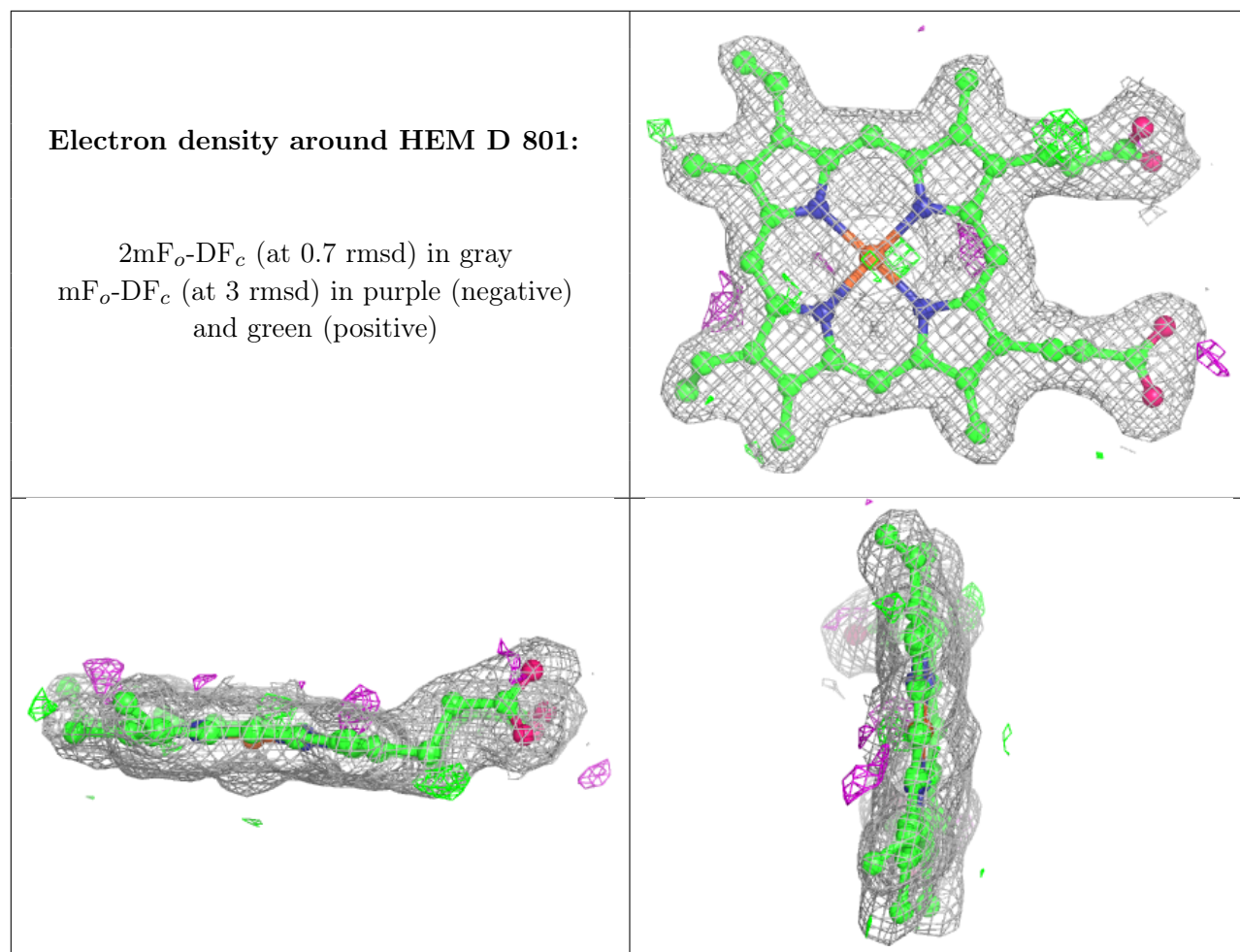
$2mF_o-DF_c$  (at 0.7 rmsd) in gray  
 $mF_o-DF_c$  (at 3 rmsd) in purple (negative)  
and green (positive)



**Electron density around HEM A 801:**

$2mF_o-DF_c$  (at 0.7 rmsd) in gray  
 $mF_o-DF_c$  (at 3 rmsd) in purple (negative)  
and green (positive)





## 6.5 Other polymers [i](#)

There are no such residues in this entry.