



Full wwPDB X-ray Structure Validation Report ⓘ

Nov 15, 2023 – 10:17 AM JST

PDB ID : 6J6P
Title : Crystal structure of diamondback moth ryanodine receptor phosphorylation domain(2836-3050) mutant S2946D
Authors : Xu, T.; Lin, L.; Yuchi, Z.
Deposited on : 2019-01-15
Resolution : 1.53 Å(reported)

This is a Full wwPDB X-ray Structure Validation Report for a publicly released PDB entry.

We welcome your comments at validation@mail.wwpdb.org

A user guide is available at

<https://www.wwpdb.org/validation/2017/XrayValidationReportHelp>

with specific help available everywhere you see the ⓘ symbol.

The types of validation reports are described at

<http://www.wwpdb.org/validation/2017/FAQs#types>.

The following versions of software and data (see [references ⓘ](#)) were used in the production of this report:

MolProbity : 4.02b-467
Mogul : 1.8.5 (274361), CSD as541be (2020)
Xtriage (Phenix) : 1.13
EDS : 2.36
Percentile statistics : 20191225.v01 (using entries in the PDB archive December 25th 2019)
Refmac : 5.8.0158
CCP4 : 7.0.044 (Gargrove)
Ideal geometry (proteins) : Engh & Huber (2001)
Ideal geometry (DNA, RNA) : Parkinson et al. (1996)
Validation Pipeline (wwPDB-VP) : 2.36

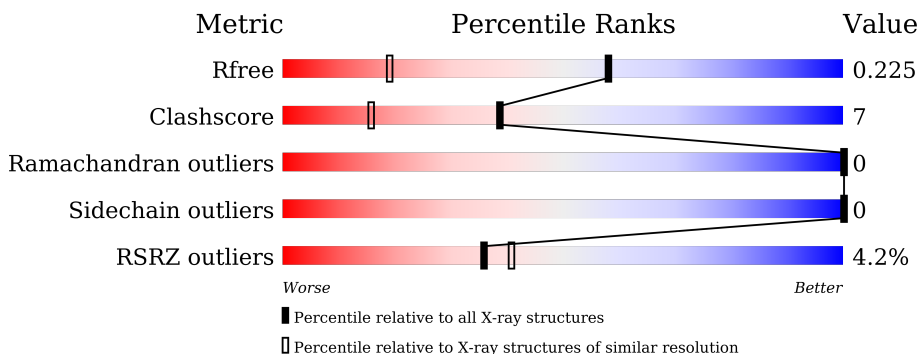
1 Overall quality at a glance

The following experimental techniques were used to determine the structure:

X-RAY DIFFRACTION

The reported resolution of this entry is 1.53 Å.

Percentile scores (ranging between 0-100) for global validation metrics of the entry are shown in the following graphic. The table shows the number of entries on which the scores are based.



Metric	Whole archive (#Entries)	Similar resolution (#Entries, resolution range(Å))
R_{free}	130704	2556 (1.56-1.52)
Clashscore	141614	2634 (1.56-1.52)
Ramachandran outliers	138981	2580 (1.56-1.52)
Sidechain outliers	138945	2577 (1.56-1.52)
RSRZ outliers	127900	2524 (1.56-1.52)

The table below summarises the geometric issues observed across the polymeric chains and their fit to the electron density. The red, orange, yellow and green segments of the lower bar indicate the fraction of residues that contain outliers for ≥ 3 , 2, 1 and 0 types of geometric quality criteria respectively. A grey segment represents the fraction of residues that are not modelled. The numeric value for each fraction is indicated below the corresponding segment, with a dot representing fractions $\leq 5\%$. The upper red bar (where present) indicates the fraction of residues that have poor fit to the electron density. The numeric value is given above the bar.

Mol	Chain	Length	Quality of chain
1	A	218	

The following table lists non-polymeric compounds, carbohydrate monomers and non-standard residues in protein, DNA, RNA chains that are outliers for geometric or electron-density-fit criteria:

Mol	Type	Chain	Res	Chirality	Geometry	Clashes	Electron density
2	EPE	A	3101	-	-	X	-

2 Entry composition [i](#)

There are 5 unique types of molecules in this entry. The entry contains 1851 atoms, of which 0 are hydrogens and 0 are deuteriums.

In the tables below, the ZeroOcc column contains the number of atoms modelled with zero occupancy, the AltConf column contains the number of residues with at least one atom in alternate conformation and the Trace column contains the number of residues modelled with at most 2 atoms.

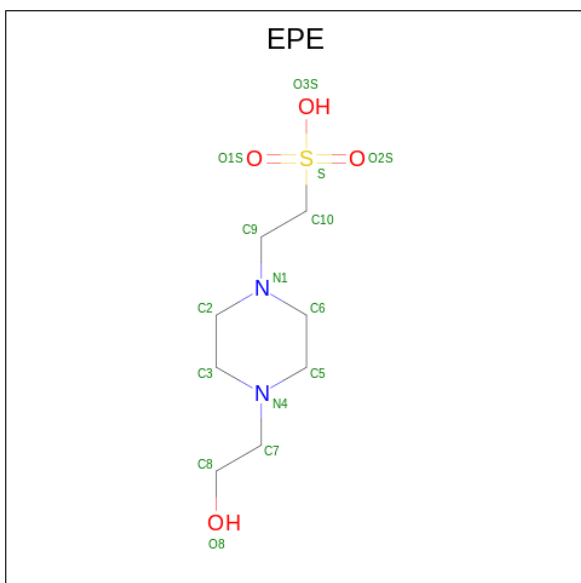
- Molecule 1 is a protein called Ryanodine receptor.

Mol	Chain	Residues	Atoms					ZeroOcc	AltConf	Trace
			Total	C	N	O	S			
1	A	192	1572	995	277	296	4	0	3	0

There are 7 discrepancies between the modelled and reference sequences:

Chain	Residue	Modelled	Actual	Comment	Reference
A	-2	SER	-	expression tag	UNP I3NWW8
A	-1	ASN	-	expression tag	UNP I3NWW8
A	0	ALA	-	expression tag	UNP I3NWW8
A	2946	ASP	SER	engineered mutation	UNP I3NWW8
A	3023	ALA	ASP	engineered mutation	UNP I3NWW8
A	3024	ALA	LYS	engineered mutation	UNP I3NWW8
A	3027	ALA	LYS	engineered mutation	UNP I3NWW8

- Molecule 2 is 4-(2-HYDROXYETHYL)-1-PIPERAZINE ETHANESULFONIC ACID (three-letter code: EPE) (formula: C₈H₁₈N₂O₄S).

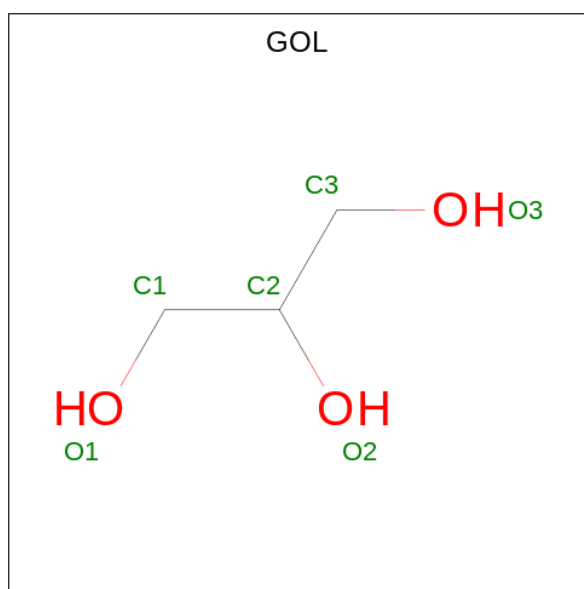


Mol	Chain	Residues	Atoms					ZeroOcc	AltConf
			Total	C	N	O	S		
2	A	1	15	8	2	4	1	0	0

- Molecule 3 is CHLORIDE ION (three-letter code: CL) (formula: Cl).

Mol	Chain	Residues	Atoms		ZeroOcc	AltConf
			Total	Cl		
3	A	2	2	2	0	0

- Molecule 4 is GLYCEROL (three-letter code: GOL) (formula: C₃H₈O₃).



Mol	Chain	Residues	Atoms			ZeroOcc	AltConf
			Total	C	O		
4	A	1	6	3	3	0	0
4	A	1	6	3	3	0	0
4	A	1	6	3	3	0	0
4	A	1	6	3	3	0	0
4	A	1	6	3	3	0	0
4	A	1	6	3	3	0	0
4	A	1	6	3	3	0	0
4	A	1	6	3	3	0	0

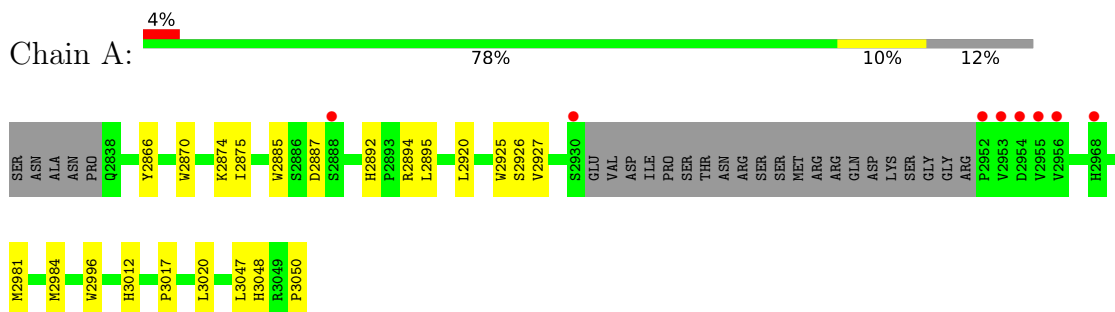
- Molecule 5 is water.

Mol	Chain	Residues	Atoms		ZeroOcc	AltConf
5	A	214	Total 214	O 214	0	0

3 Residue-property plots [i](#)

These plots are drawn for all protein, RNA, DNA and oligosaccharide chains in the entry. The first graphic for a chain summarises the proportions of the various outlier classes displayed in the second graphic. The second graphic shows the sequence view annotated by issues in geometry and electron density. Residues are color-coded according to the number of geometric quality criteria for which they contain at least one outlier: green = 0, yellow = 1, orange = 2 and red = 3 or more. A red dot above a residue indicates a poor fit to the electron density ($RSRZ > 2$). Stretches of 2 or more consecutive residues without any outlier are shown as a green connector. Residues present in the sample, but not in the model, are shown in grey.

- Molecule 1: Ryanodine receptor



4 Data and refinement statistics i

Property	Value	Source
Space group	P 31 2 1	Depositor
Cell constants a, b, c, α , β , γ	55.83Å 55.83Å 131.55Å 90.00° 90.00° 120.00°	Depositor
Resolution (Å)	32.48 – 1.53 32.48 – 1.53	Depositor EDS
% Data completeness (in resolution range)	99.6 (32.48-1.53) 96.6 (32.48-1.53)	Depositor EDS
R_{merge}	0.11	Depositor
R_{sym}	(Not available)	Depositor
$\langle I/\sigma(I) \rangle$ ¹	2.00 (at 1.53Å)	Xtrriage
Refinement program	PHENIX 1.14_3247	Depositor
R, R_{free}	0.191 , 0.225 0.191 , 0.225	Depositor DCC
R_{free} test set	2007 reflections (5.49%)	wwPDB-VP
Wilson B-factor (Å ²)	19.0	Xtrriage
Anisotropy	0.100	Xtrriage
Bulk solvent k_{sol} (e/Å ³), B_{sol} (Å ²)	0.38 , 49.3	EDS
L-test for twinning ²	$\langle L \rangle = 0.49$, $\langle L^2 \rangle = 0.32$	Xtrriage
Estimated twinning fraction	0.032 for -h,-k,l	Xtrriage
F_o, F_c correlation	0.96	EDS
Total number of atoms	1851	wwPDB-VP
Average B, all atoms (Å ²)	26.0	wwPDB-VP

Xtrriage's analysis on translational NCS is as follows: *The largest off-origin peak in the Patterson function is 7.57% of the height of the origin peak. No significant pseudotranslation is detected.*

¹Intensities estimated from amplitudes.

²Theoretical values of $\langle |L| \rangle$, $\langle L^2 \rangle$ for acentric reflections are 0.5, 0.333 respectively for untwinned datasets, and 0.375, 0.2 for perfectly twinned datasets.

5 Model quality [i](#)

5.1 Standard geometry [i](#)

Bond lengths and bond angles in the following residue types are not validated in this section: GOL, EPE, CL

The Z score for a bond length (or angle) is the number of standard deviations the observed value is removed from the expected value. A bond length (or angle) with $|Z| > 5$ is considered an outlier worth inspection. RMSZ is the root-mean-square of all Z scores of the bond lengths (or angles).

Mol	Chain	Bond lengths		Bond angles	
		RMSZ	# Z >5	RMSZ	# Z >5
1	A	0.76	0/1614	0.86	2/2196 (0.1%)

There are no bond length outliers.

All (2) bond angle outliers are listed below:

Mol	Chain	Res	Type	Atoms	Z	Observed(°)	Ideal(°)
1	A	2920	LEU	CA-CB-CG	6.24	129.66	115.30
1	A	2981	MET	CG-SD-CE	-5.73	91.03	100.20

There are no chirality outliers.

There are no planarity outliers.

5.2 Too-close contacts [i](#)

In the following table, the Non-H and H(model) columns list the number of non-hydrogen atoms and hydrogen atoms in the chain respectively. The H(added) column lists the number of hydrogen atoms added and optimized by MolProbity. The Clashes column lists the number of clashes within the asymmetric unit, whereas Symm-Clashes lists symmetry-related clashes.

Mol	Chain	Non-H	H(model)	H(added)	Clashes	Symm-Clashes
1	A	1572	0	1489	22	0
2	A	15	0	17	12	0
3	A	2	0	0	0	0
4	A	48	0	62	4	0
5	A	214	0	0	1	1
All	All	1851	0	1568	24	1

The all-atom clashscore is defined as the number of clashes found per 1000 atoms (including hydrogen atoms). The all-atom clashscore for this structure is 7.

All (24) close contacts within the same asymmetric unit are listed below, sorted by their clash magnitude.

Atom-1	Atom-2	Interatomic distance (Å)	Clash overlap (Å)
1:A:2870:TRP:HE1	2:A:3101:EPE:H101	1.05	1.11
1:A:2892:HIS:HE2	2:A:3101:EPE:H62	1.18	1.05
1:A:2870:TRP:NE1	2:A:3101:EPE:H101	1.90	0.85
1:A:2996:TRP:HE1	4:A:3110:GOL:H32	1.55	0.70
1:A:2894:ARG:HH12	2:A:3101:EPE:H51	1.61	0.65
1:A:2874:LYS:NZ	2:A:3101:EPE:H102	2.17	0.60
1:A:2996:TRP:HE1	4:A:3110:GOL:C3	2.18	0.56
1:A:2875:ILE:HD11	1:A:2895[B]:LEU:HD11	1.87	0.55
1:A:3017:PRO:HD2	1:A:3020:LEU:HD22	1.89	0.55
1:A:2894:ARG:NH1	2:A:3101:EPE:H51	2.29	0.48
1:A:2894:ARG:HH12	2:A:3101:EPE:H31	1.79	0.48
1:A:2885:TRP:CH2	1:A:2887:ASP:HB2	2.49	0.47
2:A:3101:EPE:H92	5:A:3310:HOH:O	2.14	0.47
1:A:2874:LYS:HZ3	2:A:3101:EPE:H102	1.79	0.46
1:A:2927:VAL:HG22	1:A:3047:LEU:HD22	2.01	0.42
1:A:2925:TRP:CD1	1:A:3050:PRO:HD3	2.54	0.42
1:A:2926:SER:OG	1:A:3048:HIS:HB2	2.19	0.42
2:A:3101:EPE:O2S	2:A:3101:EPE:H22	2.18	0.42
1:A:3012:HIS:HE2	4:A:3110:GOL:C1	2.34	0.41
1:A:2894:ARG:HH22	2:A:3101:EPE:H31	1.84	0.41
1:A:2895[A]:LEU:HD23	1:A:2895[A]:LEU:HA	1.85	0.41
1:A:2925:TRP:CE2	1:A:2984:MET:HE3	2.56	0.40
1:A:2866:TYR:HE2	4:A:3104:GOL:H2	1.85	0.40
1:A:2892:HIS:NE2	2:A:3101:EPE:H62	2.04	0.40

All (1) symmetry-related close contacts are listed below. The label for Atom-2 includes the symmetry operator and encoded unit-cell translations to be applied.

Atom-1	Atom-2	Interatomic distance (Å)	Clash overlap (Å)
5:A:3321:HOH:O	5:A:3386:HOH:O[5_554]	2.07	0.13

5.3 Torsion angles [i](#)

5.3.1 Protein backbone [i](#)

In the following table, the Percentiles column shows the percent Ramachandran outliers of the chain as a percentile score with respect to all X-ray entries followed by that with respect to entries of similar resolution.

The Analysed column shows the number of residues for which the backbone conformation was analysed, and the total number of residues.

Mol	Chain	Analysed	Favoured	Allowed	Outliers	Percentiles	
1	A	191/218 (88%)	190 (100%)	1 (0%)	0	100	100

There are no Ramachandran outliers to report.

5.3.2 Protein sidechains [i](#)

In the following table, the Percentiles column shows the percent sidechain outliers of the chain as a percentile score with respect to all X-ray entries followed by that with respect to entries of similar resolution.

The Analysed column shows the number of residues for which the sidechain conformation was analysed, and the total number of residues.

Mol	Chain	Analysed	Rotameric	Outliers	Percentiles	
1	A	166/195 (85%)	166 (100%)	0	100	100

There are no protein residues with a non-rotameric sidechain to report.

Sometimes sidechains can be flipped to improve hydrogen bonding and reduce clashes. There are no such sidechains identified.

5.3.3 RNA [i](#)

There are no RNA molecules in this entry.

5.4 Non-standard residues in protein, DNA, RNA chains [i](#)

There are no non-standard protein/DNA/RNA residues in this entry.

5.5 Carbohydrates [i](#)

There are no monosaccharides in this entry.

5.6 Ligand geometry [i](#)

Of 11 ligands modelled in this entry, 2 are monoatomic - leaving 9 for Mogul analysis.

In the following table, the Counts columns list the number of bonds (or angles) for which Mogul statistics could be retrieved, the number of bonds (or angles) that are observed in the model and the number of bonds (or angles) that are defined in the Chemical Component Dictionary. The Link column lists molecule types, if any, to which the group is linked. The Z score for a bond length (or angle) is the number of standard deviations the observed value is removed from the expected value. A bond length (or angle) with $|Z| > 2$ is considered an outlier worth inspection. RMSZ is the root-mean-square of all Z scores of the bond lengths (or angles).

Mol	Type	Chain	Res	Link	Bond lengths			Bond angles		
					Counts	RMSZ	# Z > 2	Counts	RMSZ	# Z > 2
4	GOL	A	3109	-	5,5,5	1.50	1 (20%)	5,5,5	0.86	0
4	GOL	A	3111	-	5,5,5	1.06	0	5,5,5	0.91	0
4	GOL	A	3105	-	5,5,5	0.89	0	5,5,5	1.17	1 (20%)
4	GOL	A	3107	-	5,5,5	0.93	0	5,5,5	1.08	0
4	GOL	A	3108	-	5,5,5	1.12	0	5,5,5	1.05	0
4	GOL	A	3110	-	5,5,5	1.00	0	5,5,5	0.94	0
4	GOL	A	3104	-	5,5,5	0.96	0	5,5,5	0.93	0
2	EPE	A	3101	-	15,15,15	4.64	11 (73%)	18,20,20	1.76	5 (27%)
4	GOL	A	3106	-	5,5,5	1.14	0	5,5,5	1.40	0

In the following table, the Chirals column lists the number of chiral outliers, the number of chiral centers analysed, the number of these observed in the model and the number defined in the Chemical Component Dictionary. Similar counts are reported in the Torsion and Rings columns. '-' means no outliers of that kind were identified.

Mol	Type	Chain	Res	Link	Chirals	Torsions	Rings
4	GOL	A	3109	-	-	0/4/4/4	-
4	GOL	A	3111	-	-	4/4/4/4	-
4	GOL	A	3105	-	-	2/4/4/4	-
4	GOL	A	3107	-	-	0/4/4/4	-
4	GOL	A	3108	-	-	0/4/4/4	-
4	GOL	A	3110	-	-	4/4/4/4	-
4	GOL	A	3104	-	-	1/4/4/4	-
2	EPE	A	3101	-	-	5/9/19/19	0/1/1/1
4	GOL	A	3106	-	-	0/4/4/4	-

All (12) bond length outliers are listed below:

Mol	Chain	Res	Type	Atoms	Z	Observed(Å)	Ideal(Å)
2	A	3101	EPE	C7-N4	-7.87	1.29	1.47
2	A	3101	EPE	C9-N1	-7.54	1.30	1.47
2	A	3101	EPE	O2S-S	7.45	1.67	1.45
2	A	3101	EPE	O1S-S	6.47	1.64	1.45

Continued on next page...

Continued from previous page...

Mol	Chain	Res	Type	Atoms	Z	Observed(Å)	Ideal(Å)
2	A	3101	EPE	O3S-S	5.35	1.66	1.47
2	A	3101	EPE	O8-C8	-4.25	1.20	1.42
2	A	3101	EPE	C2-N1	-3.66	1.36	1.46
2	A	3101	EPE	C6-N1	-3.47	1.37	1.46
2	A	3101	EPE	C3-N4	-3.41	1.37	1.46
2	A	3101	EPE	C5-N4	-3.34	1.37	1.46
2	A	3101	EPE	C10-S	3.07	1.81	1.77
4	A	3109	GOL	O2-C2	-2.86	1.34	1.43

All (6) bond angle outliers are listed below:

Mol	Chain	Res	Type	Atoms	Z	Observed(°)	Ideal(°)
2	A	3101	EPE	C6-N1-C2	3.51	116.72	108.83
2	A	3101	EPE	C9-N1-C2	2.56	117.77	111.23
2	A	3101	EPE	O8-C8-C7	2.18	120.24	111.19
2	A	3101	EPE	O1S-S-C10	2.17	109.52	106.92
2	A	3101	EPE	C3-C2-N1	2.04	114.83	110.64
4	A	3105	GOL	C3-C2-C1	-2.04	103.78	111.70

There are no chirality outliers.

All (16) torsion outliers are listed below:

Mol	Chain	Res	Type	Atoms
2	A	3101	EPE	C10-C9-N1-C2
2	A	3101	EPE	C9-C10-S-O1S
4	A	3105	GOL	O1-C1-C2-O2
4	A	3105	GOL	O1-C1-C2-C3
4	A	3110	GOL	C1-C2-C3-O3
4	A	3111	GOL	O1-C1-C2-C3
4	A	3111	GOL	C1-C2-C3-O3
4	A	3111	GOL	O1-C1-C2-O2
2	A	3101	EPE	C9-C10-S-O3S
4	A	3110	GOL	O1-C1-C2-C3
4	A	3110	GOL	O1-C1-C2-O2
2	A	3101	EPE	N4-C7-C8-O8
4	A	3111	GOL	O2-C2-C3-O3
4	A	3110	GOL	O2-C2-C3-O3
2	A	3101	EPE	C9-C10-S-O2S
4	A	3104	GOL	O2-C2-C3-O3

There are no ring outliers.

3 monomers are involved in 16 short contacts:

Mol	Chain	Res	Type	Clashes	Symm-Clashes
4	A	3110	GOL	3	0
4	A	3104	GOL	1	0
2	A	3101	EPE	12	0

5.7 Other polymers [i](#)

There are no such residues in this entry.

5.8 Polymer linkage issues [i](#)

There are no chain breaks in this entry.

6 Fit of model and data [i](#)

6.1 Protein, DNA and RNA chains [i](#)

In the following table, the column labelled ‘#RSRZ> 2’ contains the number (and percentage) of RSRZ outliers, followed by percent RSRZ outliers for the chain as percentile scores relative to all X-ray entries and entries of similar resolution. The OWAB column contains the minimum, median, 95th percentile and maximum values of the occupancy-weighted average B-factor per residue. The column labelled ‘Q< 0.9’ lists the number of (and percentage) of residues with an average occupancy less than 0.9.

Mol	Chain	Analysed	<RSRZ>	#RSRZ>2	OWAB(Å ²)	Q<0.9
1	A	192/218 (88%)	0.06	8 (4%) 36 41	14, 21, 49, 69	0

All (8) RSRZ outliers are listed below:

Mol	Chain	Res	Type	RSRZ
1	A	2952	PRO	5.4
1	A	2953	VAL	5.1
1	A	2956	VAL	5.0
1	A	2930	SER	4.3
1	A	2955	VAL	3.1
1	A	2968	HIS	2.6
1	A	2888	SER	2.5
1	A	2954	ASP	2.1

6.2 Non-standard residues in protein, DNA, RNA chains [i](#)

There are no non-standard protein/DNA/RNA residues in this entry.

6.3 Carbohydrates [i](#)

There are no monosaccharides in this entry.

6.4 Ligands [i](#)

In the following table, the Atoms column lists the number of modelled atoms in the group and the number defined in the chemical component dictionary. The B-factors column lists the minimum, median, 95th percentile and maximum values of B factors of atoms in the group. The column labelled ‘Q< 0.9’ lists the number of atoms with occupancy less than 0.9.

Mol	Type	Chain	Res	Atoms	RSCC	RSR	B-factors(\AA^2)	Q<0.9
4	GOL	A	3111	6/6	0.77	0.16	49,51,52,58	6
2	EPE	A	3101	15/15	0.80	0.15	36,54,66,90	0
4	GOL	A	3110	6/6	0.84	0.14	46,49,66,70	0
4	GOL	A	3109	6/6	0.86	0.27	28,42,57,62	0
4	GOL	A	3107	6/6	0.87	0.30	40,55,66,79	0
4	GOL	A	3105	6/6	0.90	0.17	36,47,52,55	0
3	CL	A	3102	1/1	0.91	0.03	61,61,61,61	0
4	GOL	A	3108	6/6	0.92	0.10	27,48,54,62	0
4	GOL	A	3104	6/6	0.93	0.09	26,32,41,43	0
4	GOL	A	3106	6/6	0.95	0.10	21,30,38,48	0
3	CL	A	3103	1/1	0.96	0.08	45,45,45,45	0

6.5 Other polymers [i](#)

There are no such residues in this entry.