



Full wwPDB EM Validation Report ⓘ

Dec 22, 2020 – 02:22 AM EST

PDB ID : 3J9P
EMDB ID : EMD-6267
Title : Structure of the TRPA1 ion channel determined by electron cryo-microscopy
Authors : Paulsen, C.E.; Armache, J.-P.; Gao, Y.; Cheng, Y.; Julius, D.
Deposited on : 2015-02-14
Resolution : 4.24 Å(reported)

This is a Full wwPDB EM Validation Report for a publicly released PDB entry.

We welcome your comments at validation@mail.wwpdb.org

A user guide is available at

<https://www.wwpdb.org/validation/2017/EMValidationReportHelp>

with specific help available everywhere you see the ⓘ symbol.

The following versions of software and data (see [references ⓘ](#)) were used in the production of this report:

EMDB validation analysis : 0.0.0.dev61
MolProbity : 4.02b-467
Percentile statistics : 20191225.v01 (using entries in the PDB archive December 25th 2019)
Ideal geometry (proteins) : Engh & Huber (2001)
Ideal geometry (DNA, RNA) : Parkinson et al. (1996)
Validation Pipeline (wwPDB-VP) : 2.16

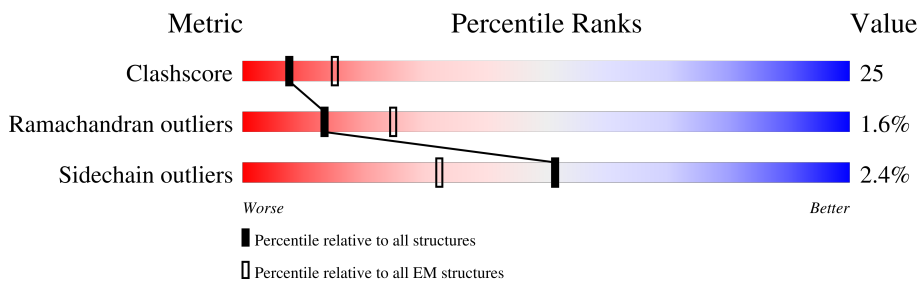
1 Overall quality at a glance

The following experimental techniques were used to determine the structure:

ELECTRON MICROSCOPY

The reported resolution of this entry is 4.24 Å.

Percentile scores (ranging between 0-100) for global validation metrics of the entry are shown in the following graphic. The table shows the number of entries on which the scores are based.



Metric	Whole archive (#Entries)	EM structures (#Entries)
Clashscore	158937	4297
Ramachandran outliers	154571	4023
Sidechain outliers	154315	3826

The table below summarises the geometric issues observed across the polymeric chains and their fit to the map. The red, orange, yellow and green segments of the bar indicate the fraction of residues that contain outliers for ≥ 3 , 2, 1 and 0 types of geometric quality criteria respectively. A grey segment represents the fraction of residues that are not modelled. The numeric value for each fraction is indicated below the corresponding segment, with a dot representing fractions $\leq 5\%$. The upper red bar (where present) indicates the fraction of residues that have poor fit to the EM map (all-atom inclusion $< 40\%$). The numeric value is given above the bar.

Mol	Chain	Length	Quality of chain
1	A	1528	
1	B	1528	
1	C	1528	
1	D	1528	

2 Entry composition

There is only 1 type of molecule in this entry. The entry contains 16952 atoms, of which 0 are hydrogens and 0 are deuteriums.

In the tables below, the AltConf column contains the number of residues with at least one atom in alternate conformation and the Trace column contains the number of residues modelled with at most 2 atoms.

- Molecule 1 is a protein called Maltose-binding periplasmic protein, Transient receptor potential cation channel subfamily A member 1 chimera.

Mol	Chain	Residues	Atoms					AltConf	Trace
			Total	C	N	O	S		
1	D	560	4238	2775	711	722	30	0	0
1	A	560	4238	2775	711	722	30	0	0
1	B	560	4238	2775	711	722	30	0	0
1	C	560	4238	2775	711	722	30	0	0

There are 180 discrepancies between the modelled and reference sequences:

Chain	Residue	Modelled	Actual	Comment	Reference
D	-408	MET	-	EXPRESSION TAG	UNP P0AEX9
D	-407	GLY	-	EXPRESSION TAG	UNP P0AEX9
D	-406	SER	-	EXPRESSION TAG	UNP P0AEX9
D	-405	SER	-	EXPRESSION TAG	UNP P0AEX9
D	-404	HIS	-	EXPRESSION TAG	UNP P0AEX9
D	-403	HIS	-	EXPRESSION TAG	UNP P0AEX9
D	-402	HIS	-	EXPRESSION TAG	UNP P0AEX9
D	-401	HIS	-	EXPRESSION TAG	UNP P0AEX9
D	-400	HIS	-	EXPRESSION TAG	UNP P0AEX9
D	-399	HIS	-	EXPRESSION TAG	UNP P0AEX9
D	-398	HIS	-	EXPRESSION TAG	UNP P0AEX9
D	-397	HIS	-	EXPRESSION TAG	UNP P0AEX9
D	-396	GLY	-	EXPRESSION TAG	UNP P0AEX9
D	-395	SER	-	EXPRESSION TAG	UNP P0AEX9
D	-394	SER	-	EXPRESSION TAG	UNP P0AEX9
D	-393	MET	-	EXPRESSION TAG	UNP P0AEX9
D	-26	ASN	-	LINKER	UNP O75762
D	-25	SER	-	LINKER	UNP O75762
D	-24	SER	-	LINKER	UNP O75762
D	-23	SER	-	LINKER	UNP O75762
D	-22	ASN	-	LINKER	UNP O75762

Continued on next page...

Continued from previous page...

Chain	Residue	Modelled	Actual	Comment	Reference
D	-21	ASN	-	LINKER	UNP O75762
D	-20	ASN	-	LINKER	UNP O75762
D	-19	ASN	-	LINKER	UNP O75762
D	-18	ASN	-	LINKER	UNP O75762
D	-17	ASN	-	LINKER	UNP O75762
D	-16	ASN	-	LINKER	UNP O75762
D	-15	ASN	-	LINKER	UNP O75762
D	-14	ASN	-	LINKER	UNP O75762
D	-13	ASN	-	LINKER	UNP O75762
D	-12	LEU	-	LINKER	UNP O75762
D	-11	GLY	-	LINKER	UNP O75762
D	-10	ILE	-	LINKER	UNP O75762
D	-9	GLU	-	LINKER	UNP O75762
D	-8	GLU	-	LINKER	UNP O75762
D	-7	ASN	-	LINKER	UNP O75762
D	-6	LEU	-	LINKER	UNP O75762
D	-5	TYR	-	LINKER	UNP O75762
D	-4	PHE	-	LINKER	UNP O75762
D	-3	GLN	-	LINKER	UNP O75762
D	-2	GLY	-	LINKER	UNP O75762
D	-1	ALA	-	LINKER	UNP O75762
D	0	GLY	-	LINKER	UNP O75762
D	1	SER	-	LINKER	UNP O75762
D	966	ASP	GLU	CONFLICT	UNP O75762
A	-408	MET	-	EXPRESSION TAG	UNP P0AEX9
A	-407	GLY	-	EXPRESSION TAG	UNP P0AEX9
A	-406	SER	-	EXPRESSION TAG	UNP P0AEX9
A	-405	SER	-	EXPRESSION TAG	UNP P0AEX9
A	-404	HIS	-	EXPRESSION TAG	UNP P0AEX9
A	-403	HIS	-	EXPRESSION TAG	UNP P0AEX9
A	-402	HIS	-	EXPRESSION TAG	UNP P0AEX9
A	-401	HIS	-	EXPRESSION TAG	UNP P0AEX9
A	-400	HIS	-	EXPRESSION TAG	UNP P0AEX9
A	-399	HIS	-	EXPRESSION TAG	UNP P0AEX9
A	-398	HIS	-	EXPRESSION TAG	UNP P0AEX9
A	-397	HIS	-	EXPRESSION TAG	UNP P0AEX9
A	-396	GLY	-	EXPRESSION TAG	UNP P0AEX9
A	-395	SER	-	EXPRESSION TAG	UNP P0AEX9
A	-394	SER	-	EXPRESSION TAG	UNP P0AEX9
A	-393	MET	-	EXPRESSION TAG	UNP P0AEX9
A	-26	ASN	-	LINKER	UNP O75762
A	-25	SER	-	LINKER	UNP O75762

Continued on next page...

Continued from previous page...

Chain	Residue	Modelled	Actual	Comment	Reference
A	-24	SER	-	LINKER	UNP O75762
A	-23	SER	-	LINKER	UNP O75762
A	-22	ASN	-	LINKER	UNP O75762
A	-21	ASN	-	LINKER	UNP O75762
A	-20	ASN	-	LINKER	UNP O75762
A	-19	ASN	-	LINKER	UNP O75762
A	-18	ASN	-	LINKER	UNP O75762
A	-17	ASN	-	LINKER	UNP O75762
A	-16	ASN	-	LINKER	UNP O75762
A	-15	ASN	-	LINKER	UNP O75762
A	-14	ASN	-	LINKER	UNP O75762
A	-13	ASN	-	LINKER	UNP O75762
A	-12	LEU	-	LINKER	UNP O75762
A	-11	GLY	-	LINKER	UNP O75762
A	-10	ILE	-	LINKER	UNP O75762
A	-9	GLU	-	LINKER	UNP O75762
A	-8	GLU	-	LINKER	UNP O75762
A	-7	ASN	-	LINKER	UNP O75762
A	-6	LEU	-	LINKER	UNP O75762
A	-5	TYR	-	LINKER	UNP O75762
A	-4	PHE	-	LINKER	UNP O75762
A	-3	GLN	-	LINKER	UNP O75762
A	-2	GLY	-	LINKER	UNP O75762
A	-1	ALA	-	LINKER	UNP O75762
A	0	GLY	-	LINKER	UNP O75762
A	1	SER	-	LINKER	UNP O75762
A	966	ASP	GLU	CONFLICT	UNP O75762
B	-408	MET	-	EXPRESSION TAG	UNP P0AEX9
B	-407	GLY	-	EXPRESSION TAG	UNP P0AEX9
B	-406	SER	-	EXPRESSION TAG	UNP P0AEX9
B	-405	SER	-	EXPRESSION TAG	UNP P0AEX9
B	-404	HIS	-	EXPRESSION TAG	UNP P0AEX9
B	-403	HIS	-	EXPRESSION TAG	UNP P0AEX9
B	-402	HIS	-	EXPRESSION TAG	UNP P0AEX9
B	-401	HIS	-	EXPRESSION TAG	UNP P0AEX9
B	-400	HIS	-	EXPRESSION TAG	UNP P0AEX9
B	-399	HIS	-	EXPRESSION TAG	UNP P0AEX9
B	-398	HIS	-	EXPRESSION TAG	UNP P0AEX9
B	-397	HIS	-	EXPRESSION TAG	UNP P0AEX9
B	-396	GLY	-	EXPRESSION TAG	UNP P0AEX9
B	-395	SER	-	EXPRESSION TAG	UNP P0AEX9
B	-394	SER	-	EXPRESSION TAG	UNP P0AEX9

Continued on next page...

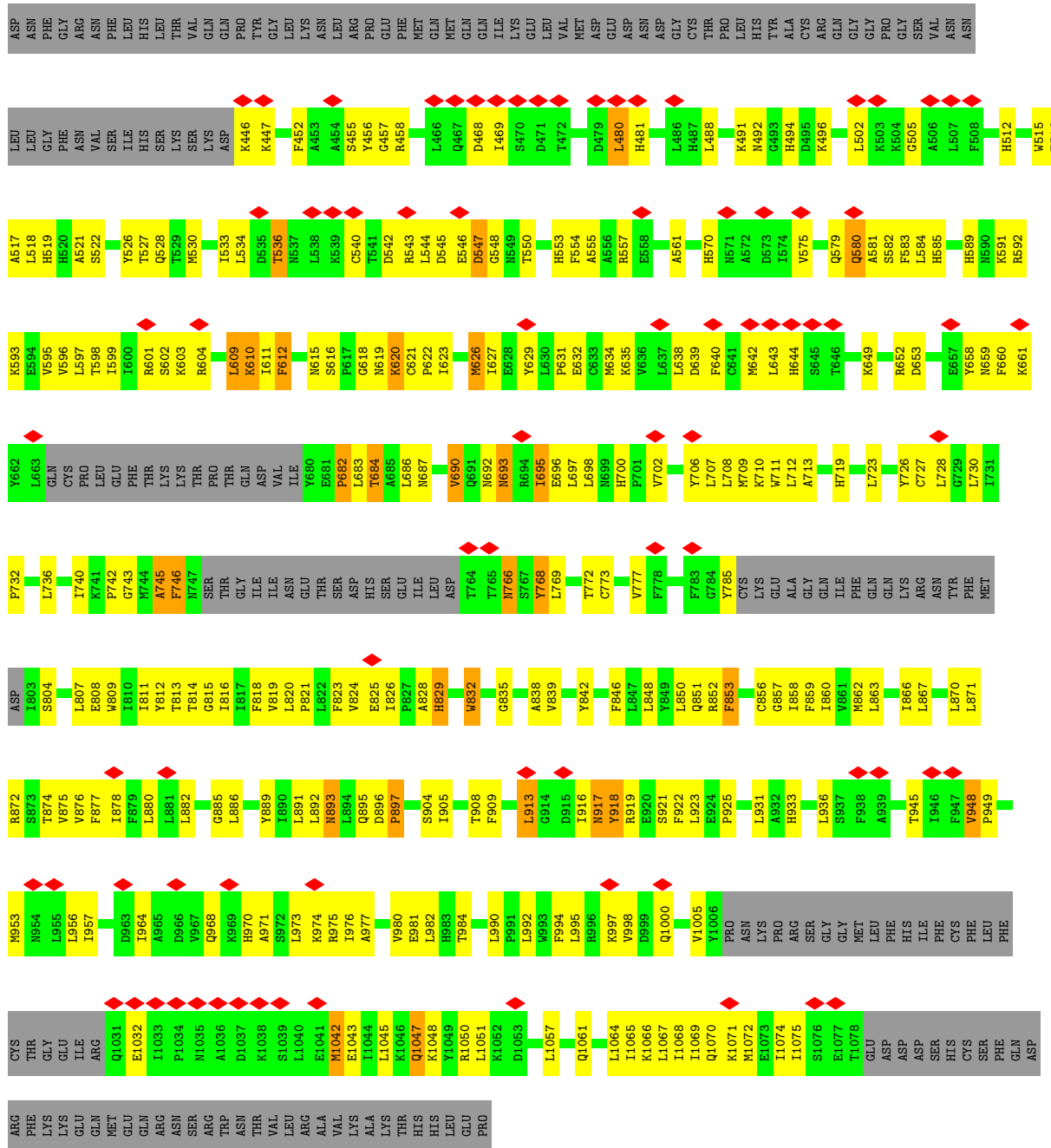
Continued from previous page...

Chain	Residue	Modelled	Actual	Comment	Reference
B	-393	MET	-	EXPRESSION TAG	UNP P0AEX9
B	-26	ASN	-	LINKER	UNP O75762
B	-25	SER	-	LINKER	UNP O75762
B	-24	SER	-	LINKER	UNP O75762
B	-23	SER	-	LINKER	UNP O75762
B	-22	ASN	-	LINKER	UNP O75762
B	-21	ASN	-	LINKER	UNP O75762
B	-20	ASN	-	LINKER	UNP O75762
B	-19	ASN	-	LINKER	UNP O75762
B	-18	ASN	-	LINKER	UNP O75762
B	-17	ASN	-	LINKER	UNP O75762
B	-16	ASN	-	LINKER	UNP O75762
B	-15	ASN	-	LINKER	UNP O75762
B	-14	ASN	-	LINKER	UNP O75762
B	-13	ASN	-	LINKER	UNP O75762
B	-12	LEU	-	LINKER	UNP O75762
B	-11	GLY	-	LINKER	UNP O75762
B	-10	ILE	-	LINKER	UNP O75762
B	-9	GLU	-	LINKER	UNP O75762
B	-8	GLU	-	LINKER	UNP O75762
B	-7	ASN	-	LINKER	UNP O75762
B	-6	LEU	-	LINKER	UNP O75762
B	-5	TYR	-	LINKER	UNP O75762
B	-4	PHE	-	LINKER	UNP O75762
B	-3	GLN	-	LINKER	UNP O75762
B	-2	GLY	-	LINKER	UNP O75762
B	-1	ALA	-	LINKER	UNP O75762
B	0	GLY	-	LINKER	UNP O75762
B	1	SER	-	LINKER	UNP O75762
B	966	ASP	GLU	CONFLICT	UNP O75762
C	-408	MET	-	EXPRESSION TAG	UNP P0AEX9
C	-407	GLY	-	EXPRESSION TAG	UNP P0AEX9
C	-406	SER	-	EXPRESSION TAG	UNP P0AEX9
C	-405	SER	-	EXPRESSION TAG	UNP P0AEX9
C	-404	HIS	-	EXPRESSION TAG	UNP P0AEX9
C	-403	HIS	-	EXPRESSION TAG	UNP P0AEX9
C	-402	HIS	-	EXPRESSION TAG	UNP P0AEX9
C	-401	HIS	-	EXPRESSION TAG	UNP P0AEX9
C	-400	HIS	-	EXPRESSION TAG	UNP P0AEX9
C	-399	HIS	-	EXPRESSION TAG	UNP P0AEX9
C	-398	HIS	-	EXPRESSION TAG	UNP P0AEX9
C	-397	HIS	-	EXPRESSION TAG	UNP P0AEX9

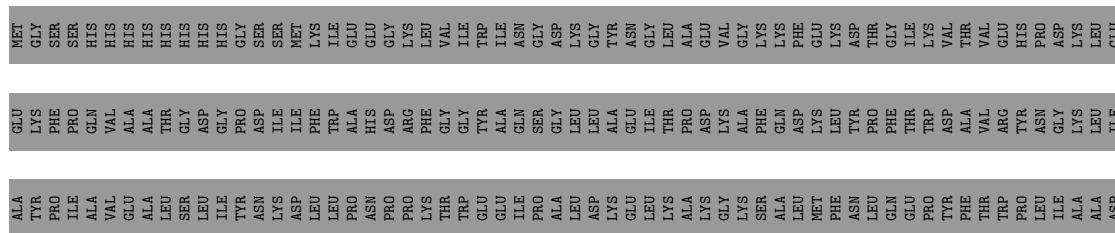
Continued on next page...

Continued from previous page...

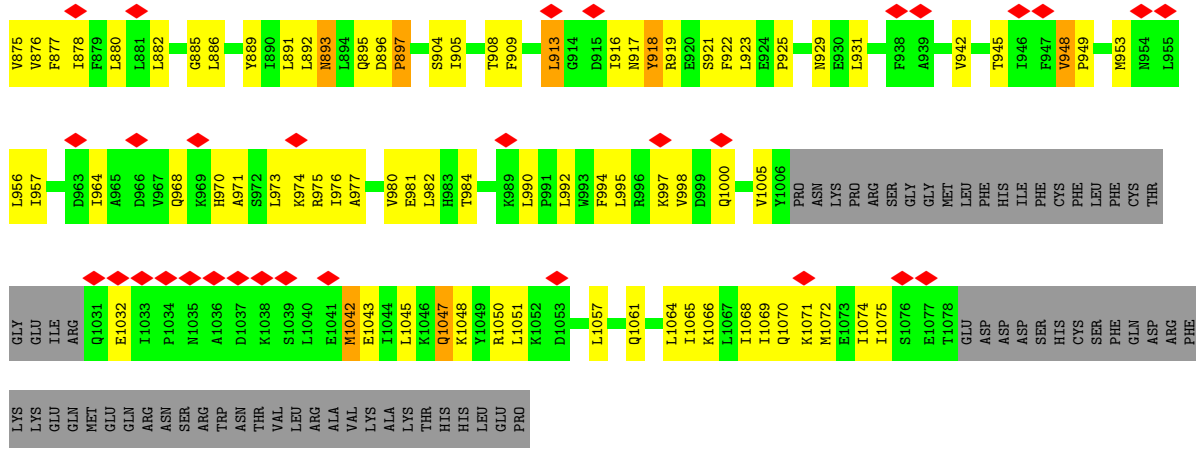
Chain	Residue	Modelled	Actual	Comment	Reference
C	-396	GLY	-	EXPRESSION TAG	UNP P0AEX9
C	-395	SER	-	EXPRESSION TAG	UNP P0AEX9
C	-394	SER	-	EXPRESSION TAG	UNP P0AEX9
C	-393	MET	-	EXPRESSION TAG	UNP P0AEX9
C	-26	ASN	-	LINKER	UNP O75762
C	-25	SER	-	LINKER	UNP O75762
C	-24	SER	-	LINKER	UNP O75762
C	-23	SER	-	LINKER	UNP O75762
C	-22	ASN	-	LINKER	UNP O75762
C	-21	ASN	-	LINKER	UNP O75762
C	-20	ASN	-	LINKER	UNP O75762
C	-19	ASN	-	LINKER	UNP O75762
C	-18	ASN	-	LINKER	UNP O75762
C	-17	ASN	-	LINKER	UNP O75762
C	-16	ASN	-	LINKER	UNP O75762
C	-15	ASN	-	LINKER	UNP O75762
C	-14	ASN	-	LINKER	UNP O75762
C	-13	ASN	-	LINKER	UNP O75762
C	-12	LEU	-	LINKER	UNP O75762
C	-11	GLY	-	LINKER	UNP O75762
C	-10	ILE	-	LINKER	UNP O75762
C	-9	GLU	-	LINKER	UNP O75762
C	-8	GLU	-	LINKER	UNP O75762
C	-7	ASN	-	LINKER	UNP O75762
C	-6	LEU	-	LINKER	UNP O75762
C	-5	TYR	-	LINKER	UNP O75762
C	-4	PHE	-	LINKER	UNP O75762
C	-3	GLN	-	LINKER	UNP O75762
C	-2	GLY	-	LINKER	UNP O75762
C	-1	ALA	-	LINKER	UNP O75762
C	0	GLY	-	LINKER	UNP O75762
C	1	SER	-	LINKER	UNP O75762
C	966	ASP	GLU	CONFLICT	UNP O75762



● Molecule 1: Maltose-binding periplasmic protein, Transient receptor potential cation channel subfamily A member 1 chimera



L807	E808	W809	I810	I811	Y812	T813	T814	C815	T816	I817	F818	V819	L820	P821	V824	E825	I826	P827	A828	H829	W832	Q833	C834	C835	A836	I837	A838	V839	Y842	F846	L847	L848	Q851	R852	F853	C856	G857	I858	F859	M862	L863	I866	L867	L870	L871	R872	S873	T874	V875						
I740	K741	P742	M743	G744	A745	F746	N747	SER	THR	THR	GLY	ILE	ILE	ASN	THR	THR	THR	THR	THR	THR	THR	THR	T764	T765	T766	S767	L768	Y769	T772	C773	V777	F778	F783	G784	Y785	CYS	LYS	GLU	ALA	GLY	GLN	ILE	PHE	GLN	GLN	LYS	ARG	ASN	THR	PHE	L730	I731	P732	L736	S804
V595	V596	L597	T598	I599	I600	R601	S602	K603	R604	L609	K610	I611	F612	M615	S616	P617	G618	N619	K620	C621	P622	I623	M626	I627	E628	G629	L630	P631	E632	C633	M634	K635	V636	L637	L638	D639	F640	C641	M642	L643	H644	S645	K649	R652	D653	E657	Y658	N659	P660	K661	Y662	L663	GLN		
A517	L518	H519	H520	A521	S522	Y526	T527	H528	T529	M530	I533	L534	D535	T536	M537	L538	K539	F541	D542	R543	D544	E546	D547	G548	H549	T550	H553	F554	A555	R557	E558	A561	H570	N571	A572	D573	I574	V575	Q579	Q580	A581	S582	F583	L584	H585	K591	R592	K593	E594	T516					
LEU	LEU	GLY	PHE	ASN	VAL	SER	ILE	HIS	SER	SER	GLN	LYS	ASP	K446	K447	F452	A453	A454	Y455	C540	C457	R458	L466	D467	D468	I469	S470	D471	D472	L479	L480	H481	L486	H487	L488	K491	N492	G493	H494	D495	K496	L502	R503	K504	G505	A506	L507	F508	H512	W515	T516				
ASP	ASN	PHE	GLY	ASN	VAL	PHE	ILE	HIS	THR	VAL	GLN	ALA	ASP	TYR	TYR	LEU	ILE	LYS	ASN	VAL	GLY	THR	ILE	GLY	VAL	ARG	CYS	THR	ILE	ALA	VAL	THR	ALA	ASP	GLY	ALA	CYS	THR	THR	ASN	PRO	HIS	LEU	VAL	VAL	GLY	SER	VAL	ASN	ASN					
MET	LEU	HIS	LEU	HIS	ILE	VAL	PHE	HIS	THR	VAL	GLN	ALA	ASP	TYR	TYR	LEU	ILE	LYS	ASN	VAL	GLY	THR	ILE	GLY	VAL	ARG	CYS	THR	ILE	ALA	VAL	THR	ALA	ASP	GLY	ALA	CYS	THR	THR	ASN	PRO	HIS	LEU	VAL	VAL	GLY	SER	VAL	ASN	ASN					
CYS	LYS	SER	ASN	ASN	TRP	GLY	CYS	PHE	PRO	PRO	GLY	VAL	VAL	VAL	PHE	GLY	GLY	SER	LEU	GLY	THR	ILE	THR	PHE	GLY	THR	GLY	ALA	HIS	GLY	VAL	THR	THR	ILE	ILE	ALA	HIS	GLY	THR	THR	ASN	ASN	ASN	ASN	ASN	ASN	THR	THR	THR	THR	ASP				
LEU	GLU	MET	ILE	MET	CYS	LEU	ASP	ASP	ASN	GLN	ILE	ILE	ASP	ASP	PRO	VAL	GLU	VAL	VAL	VAL	VAL	ARG	GLY	THR	GLY	ARG	CYS	THR	ILE	ALA	VAL	VAL	VAL	THR	THR	THR	THR	THR	THR	THR	THR	THR	THR	THR	THR	THR	THR	THR	THR	THR	THR	THR			
THR	VAL	VAL	ILE	ASN	PRO	ALA	SER	GLY	VAL	GLY	VAL	VAL	VAL	VAL	VAL	VAL	VAL	VAL	VAL	VAL	VAL	PHE	THR	GLN	GLY	ASP	ALA	ALA	ALA	ALA	ALA	ALA	ALA	ALA	ALA	ALA	ALA	ALA	ALA	ALA	ALA	ALA	ALA	ALA	ALA	ALA	ALA	ALA	ALA	ALA	ALA	ALA			
THR	THR	THR	THR	THR	THR	THR	THR	THR	THR	THR	THR	THR	THR	THR	THR	THR	THR	THR	THR	THR	THR	THR	THR	THR	THR	THR	THR	THR	THR	THR	THR	THR	THR	THR	THR	THR	THR	THR	THR	THR	THR	THR	THR	THR	THR	THR	THR	THR	THR	THR	THR	THR	THR		
GLY	GLY	TYR	ALA	PHE	LYS	TYR	ASN	GLY	GLY	ASN	GLY	ASP	ILE	LYS	LYS	VAL	ASP	ASP	ASP	ASP	ASP	ASP	ASP	ASP	ASP	ASP	ASP	ASP	ASP	ASP	ASP	ASP	ASP	ASP	ASP	ASP	ASP	ASP	ASP	ASP	ASP	ASP	ASP	ASP	ASP	ASP	ASP	ASP	ASP	ASP	ASP	ASP	ASP	ASP	



4 Experimental information

Property	Value	Source
EM reconstruction method	SINGLE PARTICLE	Depositor
Imposed symmetry	POINT, C4	Depositor
Number of particles used	43585	Depositor
Resolution determination method	FSC 0.143 CUT-OFF	Depositor
CTF correction method	Each particle	Depositor
Microscope	FEI POLARA 300	Depositor
Voltage (kV)	300	Depositor
Electron dose ($e^-/\text{\AA}^2$)	21	Depositor
Minimum defocus (nm)	1500	Depositor
Maximum defocus (nm)	2800	Depositor
Magnification	31000	Depositor
Image detector	GATAN K2 (4k x 4k)	Depositor
Maximum map value	20.724	Depositor
Minimum map value	-12.650	Depositor
Average map value	0.000	Depositor
Map value standard deviation	1.000	Depositor
Recommended contour level	8.0	Depositor
Map size (\AA)	364.68, 364.68, 364.68	wwPDB
Map dimensions	300, 300, 300	wwPDB
Map angles ($^\circ$)	90.0, 90.0, 90.0	wwPDB
Pixel spacing (\AA)	1.2156, 1.2156, 1.2156	Depositor

5 Model quality [i](#)

5.1 Standard geometry [i](#)

The Z score for a bond length (or angle) is the number of standard deviations the observed value is removed from the expected value. A bond length (or angle) with $|Z| > 5$ is considered an outlier worth inspection. RMSZ is the root-mean-square of all Z scores of the bond lengths (or angles).

Mol	Chain	Bond lengths		Bond angles	
		RMSZ	# Z >5	RMSZ	# Z >5
1	A	0.41	0/4326	0.82	1/5872 (0.0%)
1	B	0.41	0/4326	0.82	1/5872 (0.0%)
1	C	0.42	0/4326	0.82	1/5872 (0.0%)
1	D	0.41	0/4326	0.82	1/5872 (0.0%)
All	All	0.41	0/17304	0.82	4/23488 (0.0%)

Chiral center outliers are detected by calculating the chiral volume of a chiral center and verifying if the center is modelled as a planar moiety or with the opposite hand. A planarity outlier is detected by checking planarity of atoms in a peptide group, atoms in a mainchain group or atoms of a sidechain that are expected to be planar.

Mol	Chain	#Chirality outliers	#Planarity outliers
1	A	0	23
1	B	0	23
1	C	0	23
1	D	0	24
All	All	0	93

There are no bond length outliers.

All (4) bond angle outliers are listed below:

Mol	Chain	Res	Type	Atoms	Z	Observed(°)	Ideal(°)
1	A	766	ASN	N-CA-CB	9.05	126.89	110.60
1	D	766	ASN	N-CA-CB	9.02	126.84	110.60
1	C	766	ASN	N-CA-CB	9.02	126.84	110.60
1	B	766	ASN	N-CA-CB	9.00	126.80	110.60

There are no chirality outliers.

All (93) planarity outliers are listed below:

Mol	Chain	Res	Type	Group
1	A	1032	GLU	Peptide

Continued on next page...

Continued from previous page...

Mol	Chain	Res	Type	Group
1	A	1047	GLN	Sidechain
1	A	547	ASP	Peptide
1	A	593	LYS	Peptide
1	A	604	ARG	Peptide
1	A	609	LEU	Peptide
1	A	610	LYS	Peptide
1	A	612	PHE	Peptide
1	A	626	MET	Peptide
1	A	643	LEU	Peptide
1	A	644	HIS	Peptide
1	A	682	PRO	Peptide
1	A	692	ASN	Peptide
1	A	693	ASN	Peptide
1	A	695	ILE	Peptide
1	A	696	GLU	Peptide
1	A	740	ILE	Peptide
1	A	745	ALA	Peptide
1	A	826	ILE	Peptide
1	A	893	ASN	Peptide
1	A	897	PRO	Peptide
1	A	913	LEU	Peptide
1	A	918	TYR	Peptide
1	B	1032	GLU	Peptide
1	B	1047	GLN	Sidechain
1	B	547	ASP	Peptide
1	B	593	LYS	Peptide
1	B	604	ARG	Peptide
1	B	609	LEU	Peptide
1	B	610	LYS	Peptide
1	B	612	PHE	Peptide
1	B	626	MET	Peptide
1	B	643	LEU	Peptide
1	B	644	HIS	Peptide
1	B	682	PRO	Peptide
1	B	692	ASN	Peptide
1	B	693	ASN	Peptide
1	B	695	ILE	Peptide
1	B	696	GLU	Peptide
1	B	740	ILE	Peptide
1	B	745	ALA	Peptide
1	B	826	ILE	Peptide
1	B	893	ASN	Peptide

Continued on next page...

Continued from previous page...

Mol	Chain	Res	Type	Group
1	B	897	PRO	Peptide
1	B	913	LEU	Peptide
1	B	918	TYR	Peptide
1	C	1032	GLU	Peptide
1	C	1047	GLN	Sidechain
1	C	547	ASP	Peptide
1	C	593	LYS	Peptide
1	C	604	ARG	Peptide
1	C	609	LEU	Peptide
1	C	610	LYS	Peptide
1	C	612	PHE	Peptide
1	C	626	MET	Peptide
1	C	643	LEU	Peptide
1	C	644	HIS	Peptide
1	C	682	PRO	Peptide
1	C	692	ASN	Peptide
1	C	693	ASN	Peptide
1	C	695	ILE	Peptide
1	C	696	GLU	Peptide
1	C	740	ILE	Peptide
1	C	745	ALA	Peptide
1	C	826	ILE	Peptide
1	C	893	ASN	Peptide
1	C	897	PRO	Peptide
1	C	913	LEU	Peptide
1	C	918	TYR	Peptide
1	D	1032	GLU	Peptide
1	D	1047	GLN	Sidechain
1	D	547	ASP	Peptide
1	D	593	LYS	Peptide
1	D	604	ARG	Peptide
1	D	609	LEU	Peptide
1	D	610	LYS	Peptide
1	D	612	PHE	Peptide
1	D	626	MET	Peptide
1	D	643	LEU	Peptide
1	D	644	HIS	Peptide
1	D	682	PRO	Peptide
1	D	692	ASN	Peptide
1	D	693	ASN	Peptide
1	D	695	ILE	Peptide
1	D	696	GLU	Peptide

Continued on next page...

Continued from previous page...

Mol	Chain	Res	Type	Group
1	D	740	ILE	Peptide
1	D	745	ALA	Peptide
1	D	826	ILE	Peptide
1	D	893	ASN	Peptide
1	D	897	PRO	Peptide
1	D	913	LEU	Peptide
1	D	917	ASN	Peptide
1	D	918	TYR	Peptide

5.2 Too-close contacts [i](#)

In the following table, the Non-H and H(model) columns list the number of non-hydrogen atoms and hydrogen atoms in the chain respectively. The H(added) column lists the number of hydrogen atoms added and optimized by MolProbity. The Clashes column lists the number of clashes within the asymmetric unit, whereas Symm-Clashes lists symmetry-related clashes.

Mol	Chain	Non-H	H(model)	H(added)	Clashes	Symm-Clashes
1	A	4238	0	4110	232	0
1	B	4238	0	4110	230	0
1	C	4238	0	4110	233	0
1	D	4238	0	4110	239	0
All	All	16952	0	16440	851	0

The all-atom clashscore is defined as the number of clashes found per 1000 atoms (including hydrogen atoms). The all-atom clashscore for this structure is 25.

All (851) close contacts within the same asymmetric unit are listed below, sorted by their clash magnitude.

Atom-1	Atom-2	Interatomic distance (Å)	Clash overlap (Å)
1:D:1051:LEU:HD13	1:A:1047:GLN:NE2	1.39	1.37
1:A:1051:LEU:HD13	1:B:1047:GLN:NE2	1.40	1.32
1:B:1051:LEU:HD13	1:C:1047:GLN:NE2	1.41	1.32
1:D:1047:GLN:NE2	1:C:1051:LEU:HD13	1.40	1.30
1:D:1051:LEU:CD1	1:A:1047:GLN:NE2	2.26	0.97
1:A:1051:LEU:CD1	1:B:1047:GLN:NE2	2.27	0.96
1:D:1047:GLN:NE2	1:C:1051:LEU:CD1	2.27	0.96
1:D:1051:LEU:HD13	1:A:1047:GLN:HE22	1.14	0.95
1:B:1051:LEU:CD1	1:C:1047:GLN:NE2	2.29	0.95
1:B:1051:LEU:HD13	1:C:1047:GLN:HE22	1.17	0.94
1:D:1047:GLN:HE22	1:C:1051:LEU:HD13	1.14	0.93

Continued on next page...

Continued from previous page...

Atom-1	Atom-2	Interatomic distance (Å)	Clash overlap (Å)
1:A:1051:LEU:HD13	1:B:1047:GLN:HE22	1.16	0.93
1:B:629:TYR:H	1:B:697:LEU:HD11	1.41	0.86
1:A:629:TYR:H	1:A:697:LEU:HD11	1.41	0.85
1:D:629:TYR:H	1:D:697:LEU:HD11	1.41	0.84
1:A:1072:MET:O	1:B:458:ARG:NH2	2.11	0.83
1:C:629:TYR:H	1:C:697:LEU:HD11	1.41	0.83
1:A:970:HIS:ND1	1:A:970:HIS:O	2.12	0.82
1:D:540:CYS:HA	1:D:543:ARG:HH21	1.44	0.82
1:D:970:HIS:ND1	1:D:970:HIS:O	2.12	0.82
1:A:540:CYS:HA	1:A:543:ARG:HH21	1.44	0.82
1:B:540:CYS:HA	1:B:543:ARG:HH21	1.44	0.82
1:D:1072:MET:O	1:A:458:ARG:NH2	2.13	0.81
1:B:1072:MET:O	1:C:458:ARG:NH2	2.12	0.81
1:C:970:HIS:ND1	1:C:970:HIS:O	2.12	0.81
1:C:540:CYS:HA	1:C:543:ARG:HH21	1.44	0.81
1:D:458:ARG:NH2	1:C:1072:MET:O	2.14	0.81
1:B:970:HIS:O	1:B:970:HIS:ND1	2.12	0.80
1:D:1051:LEU:HD13	1:A:1047:GLN:HE21	1.46	0.80
1:A:1051:LEU:HD13	1:B:1047:GLN:HE21	1.47	0.79
1:B:1051:LEU:HD13	1:C:1047:GLN:HE21	1.48	0.78
1:B:925:PRO:HB2	1:B:931:LEU:HD23	1.66	0.78
1:D:1047:GLN:HE21	1:C:1051:LEU:HD13	1.49	0.78
1:B:811:ILE:HD11	1:B:842:TYR:CD1	2.19	0.77
1:D:925:PRO:HB2	1:D:931:LEU:HD23	1.66	0.77
1:A:811:ILE:HD11	1:A:842:TYR:CD1	2.19	0.77
1:B:1051:LEU:CD1	1:C:1047:GLN:HE22	1.96	0.77
1:C:811:ILE:HD11	1:C:842:TYR:CD1	2.19	0.77
1:D:811:ILE:HD11	1:D:842:TYR:CD1	2.19	0.77
1:C:925:PRO:HB2	1:C:931:LEU:HD23	1.65	0.77
1:A:925:PRO:HB2	1:A:931:LEU:HD23	1.66	0.76
1:D:695:ILE:HD13	1:D:698:LEU:HB3	1.67	0.76
1:D:579:GLN:O	1:D:581:ALA:N	2.18	0.76
1:B:695:ILE:HD13	1:B:698:LEU:HB3	1.67	0.76
1:A:695:ILE:HD13	1:A:698:LEU:HB3	1.67	0.76
1:A:1051:LEU:CD1	1:B:1047:GLN:HE22	1.95	0.75
1:C:579:GLN:O	1:C:581:ALA:N	2.18	0.75
1:A:631:PRO:O	1:A:634:MET:N	2.20	0.75
1:B:579:GLN:O	1:B:581:ALA:N	2.18	0.75
1:D:631:PRO:O	1:D:634:MET:N	2.20	0.75
1:D:540:CYS:HA	1:D:543:ARG:NH2	2.01	0.75
1:B:882:LEU:HA	1:B:905:ILE:HD13	1.68	0.75

Continued on next page...

Continued from previous page...

Atom-1	Atom-2	Interatomic distance (Å)	Clash overlap (Å)
1:C:631:PRO:O	1:C:634:MET:N	2.20	0.75
1:B:631:PRO:O	1:B:634:MET:N	2.20	0.75
1:C:540:CYS:HA	1:C:543:ARG:NH2	2.01	0.75
1:C:882:LEU:HA	1:C:905:ILE:HD13	1.68	0.75
1:C:695:ILE:HD13	1:C:698:LEU:HB3	1.67	0.74
1:A:540:CYS:HA	1:A:543:ARG:NH2	2.01	0.74
1:B:540:CYS:HA	1:B:543:ARG:NH2	2.01	0.74
1:A:579:GLN:O	1:A:581:ALA:N	2.18	0.74
1:A:882:LEU:HA	1:A:905:ILE:HD13	1.68	0.73
1:D:1000:GLN:OE1	1:D:1000:GLN:N	2.21	0.73
1:C:1000:GLN:OE1	1:C:1000:GLN:N	2.21	0.73
1:D:1065:ILE:HA	1:D:1068:ILE:HG12	1.71	0.73
1:D:591:LYS:HA	1:D:627:ILE:HD11	1.70	0.73
1:D:882:LEU:HA	1:D:905:ILE:HD13	1.68	0.73
1:B:591:LYS:HA	1:B:627:ILE:HD11	1.70	0.73
1:A:1065:ILE:HA	1:A:1068:ILE:HG12	1.71	0.73
1:A:832:TRP:HA	1:A:832:TRP:CE3	2.24	0.73
1:C:832:TRP:CE3	1:C:832:TRP:HA	2.24	0.72
1:A:1000:GLN:N	1:A:1000:GLN:OE1	2.21	0.72
1:B:1000:GLN:N	1:B:1000:GLN:OE1	2.21	0.72
1:B:522:SER:HB3	1:B:555:ALA:HB2	1.71	0.72
1:B:832:TRP:HA	1:B:832:TRP:CE3	2.24	0.72
1:C:1065:ILE:HA	1:C:1068:ILE:HG12	1.71	0.72
1:D:832:TRP:CE3	1:D:832:TRP:HA	2.24	0.71
1:D:1051:LEU:CD1	1:A:1047:GLN:HE22	1.94	0.71
1:A:591:LYS:HA	1:A:627:ILE:HD11	1.70	0.71
1:B:832:TRP:HA	1:B:832:TRP:HE3	1.56	0.71
1:C:522:SER:HB3	1:C:555:ALA:HB2	1.71	0.71
1:C:832:TRP:HA	1:C:832:TRP:HE3	1.55	0.71
1:B:1065:ILE:HA	1:B:1068:ILE:HG12	1.71	0.71
1:C:591:LYS:HA	1:C:627:ILE:HD11	1.70	0.71
1:A:885:GLY:HA2	1:A:908:THR:HG21	1.73	0.71
1:B:885:GLY:HA2	1:B:908:THR:HG21	1.73	0.71
1:D:1047:GLN:HE22	1:C:1051:LEU:CD1	1.94	0.71
1:D:885:GLY:HA2	1:D:908:THR:HG21	1.73	0.71
1:A:522:SER:HB3	1:A:555:ALA:HB2	1.71	0.70
1:A:832:TRP:HA	1:A:832:TRP:HE3	1.55	0.70
1:D:832:TRP:HE3	1:D:832:TRP:HA	1.55	0.70
1:D:468:ASP:H	1:D:469:ILE:HA	1.56	0.70
1:B:468:ASP:H	1:B:469:ILE:HA	1.56	0.70
1:A:468:ASP:H	1:A:469:ILE:HA	1.56	0.70

Continued on next page...

Continued from previous page...

Atom-1	Atom-2	Interatomic distance (Å)	Clash overlap (Å)
1:C:468:ASP:H	1:C:469:ILE:HA	1.56	0.70
1:D:522:SER:HB3	1:D:555:ALA:HB2	1.71	0.69
1:C:638:LEU:HD11	1:C:653:ASP:HB2	1.75	0.69
1:B:638:LEU:HD11	1:B:653:ASP:HB2	1.75	0.69
1:C:885:GLY:HA2	1:C:908:THR:HG21	1.73	0.69
1:B:545:ASP:HB3	1:B:546:GLU:HA	1.75	0.69
1:B:631:PRO:HB2	1:B:697:LEU:HD22	1.76	0.68
1:D:638:LEU:HD11	1:D:653:ASP:HB2	1.75	0.68
1:C:545:ASP:HB3	1:C:546:GLU:HA	1.75	0.68
1:D:544:LEU:O	1:D:548:GLY:HA2	1.94	0.68
1:A:544:LEU:O	1:A:548:GLY:HA2	1.93	0.68
1:A:638:LEU:HD11	1:A:653:ASP:HB2	1.75	0.68
1:D:545:ASP:HB3	1:D:546:GLU:HA	1.75	0.68
1:B:516:THR:HG22	1:B:517:ALA:H	1.58	0.68
1:B:542:ASP:O	1:B:543:ARG:HD3	1.94	0.68
1:C:542:ASP:O	1:C:543:ARG:HD3	1.94	0.68
1:C:516:THR:HG22	1:C:517:ALA:H	1.58	0.68
1:A:743:GLY:H	1:A:832:TRP:HE1	1.42	0.67
1:B:544:LEU:O	1:B:548:GLY:HA2	1.93	0.67
1:C:631:PRO:HB2	1:C:697:LEU:HD22	1.75	0.67
1:A:516:THR:HG22	1:A:517:ALA:H	1.58	0.67
1:A:631:PRO:HB2	1:A:697:LEU:HD22	1.76	0.67
1:C:544:LEU:O	1:C:548:GLY:HA2	1.93	0.67
1:D:516:THR:HG22	1:D:517:ALA:H	1.58	0.67
1:D:542:ASP:O	1:D:543:ARG:HD3	1.94	0.67
1:C:743:GLY:H	1:C:832:TRP:HE1	1.43	0.67
1:D:631:PRO:HB2	1:D:697:LEU:HD22	1.75	0.67
1:B:743:GLY:H	1:B:832:TRP:HE1	1.43	0.66
1:A:542:ASP:O	1:A:543:ARG:HD3	1.94	0.66
1:A:545:ASP:HB3	1:A:546:GLU:HA	1.75	0.66
1:B:515:TRP:O	1:B:519:HIS:ND1	2.29	0.66
1:D:804:SER:HA	1:D:807:LEU:HD12	1.78	0.66
1:D:743:GLY:H	1:D:832:TRP:HE1	1.42	0.66
1:C:515:TRP:O	1:C:519:HIS:ND1	2.29	0.66
1:C:804:SER:HA	1:C:807:LEU:HD12	1.78	0.66
1:A:992:LEU:HA	1:A:995:LEU:HD23	1.78	0.65
1:A:1069:ILE:HD11	1:B:1064:LEU:HD21	1.78	0.65
1:B:992:LEU:HA	1:B:995:LEU:HD23	1.78	0.65
1:A:804:SER:HA	1:A:807:LEU:HD12	1.78	0.65
1:A:515:TRP:O	1:A:519:HIS:ND1	2.29	0.65
1:B:804:SER:HA	1:B:807:LEU:HD12	1.78	0.65

Continued on next page...

Continued from previous page...

Atom-1	Atom-2	Interatomic distance (Å)	Clash overlap (Å)
1:D:1064:LEU:HD21	1:C:1069:ILE:HD11	1.79	0.65
1:D:1069:ILE:HD11	1:A:1064:LEU:HD21	1.79	0.64
1:B:1069:ILE:HD11	1:C:1064:LEU:HD21	1.78	0.64
1:D:561:ALA:HB1	1:D:598:THR:HG21	1.80	0.64
1:D:515:TRP:O	1:D:519:HIS:ND1	2.29	0.64
1:D:992:LEU:HA	1:D:995:LEU:HD23	1.78	0.64
1:C:561:ALA:HB1	1:C:598:THR:HG21	1.79	0.64
1:A:561:ALA:HB1	1:A:598:THR:HG21	1.79	0.64
1:B:640:PHE:HD2	1:B:642:MET:HB3	1.63	0.63
1:A:640:PHE:HD2	1:A:642:MET:HB3	1.63	0.63
1:B:561:ALA:HB1	1:B:598:THR:HG21	1.80	0.63
1:C:992:LEU:HA	1:C:995:LEU:HD23	1.78	0.63
1:B:496:LYS:HA	1:B:496:LYS:NZ	2.15	0.62
1:C:871:LEU:O	1:C:874:THR:HG22	2.00	0.62
1:D:640:PHE:HD2	1:D:642:MET:HB3	1.63	0.62
1:A:496:LYS:NZ	1:A:496:LYS:HA	2.15	0.62
1:C:640:PHE:HD2	1:C:642:MET:HB3	1.62	0.62
1:D:1048:LYS:HZ3	1:A:1050:ARG:NH2	1.97	0.62
1:D:889:TYR:O	1:D:893:ASN:ND2	2.33	0.62
1:C:496:LYS:HA	1:C:496:LYS:NZ	2.14	0.62
1:A:889:TYR:O	1:A:893:ASN:ND2	2.33	0.62
1:B:811:ILE:HD11	1:B:842:TYR:HD1	1.64	0.62
1:D:496:LYS:HA	1:D:496:LYS:NZ	2.15	0.62
1:B:582:SER:O	1:B:585:HIS:HB2	2.00	0.61
1:B:889:TYR:O	1:B:893:ASN:ND2	2.33	0.61
1:C:889:TYR:O	1:C:893:ASN:ND2	2.33	0.61
1:A:582:SER:O	1:A:585:HIS:HB2	2.00	0.61
1:A:923:LEU:HD22	1:B:897:PRO:HG3	1.82	0.61
1:D:871:LEU:O	1:D:874:THR:HG22	2.00	0.61
1:B:871:LEU:O	1:B:874:THR:HG22	2.00	0.61
1:D:917:ASN:H	1:D:918:TYR:CB	2.13	0.61
1:B:997:LYS:HB2	1:B:998:VAL:HA	1.83	0.61
1:D:875:VAL:O	1:D:878:ILE:HG22	2.01	0.61
1:C:917:ASN:H	1:C:918:TYR:CB	2.13	0.61
1:B:875:VAL:O	1:B:878:ILE:HG22	2.01	0.61
1:A:871:LEU:O	1:A:874:THR:HG22	2.00	0.61
1:A:875:VAL:O	1:A:878:ILE:HG22	2.01	0.61
1:A:917:ASN:H	1:A:918:TYR:CB	2.13	0.61
1:A:811:ILE:HD11	1:A:842:TYR:HD1	1.64	0.60
1:C:997:LYS:HB2	1:C:998:VAL:HA	1.83	0.60
1:A:553:HIS:CE1	1:A:583:PHE:HB3	2.37	0.60

Continued on next page...

Continued from previous page...

Atom-1	Atom-2	Interatomic distance (Å)	Clash overlap (Å)
1:A:997:LYS:HB2	1:A:998:VAL:HA	1.83	0.60
1:C:582:SER:O	1:C:585:HIS:HB2	2.00	0.60
1:C:875:VAL:O	1:C:878:ILE:HG22	2.01	0.60
1:D:877:PHE:HA	1:D:880:LEU:HB3	1.82	0.60
1:B:923:LEU:HD22	1:C:897:PRO:HG3	1.83	0.60
1:D:811:ILE:HD11	1:D:842:TYR:HD1	1.64	0.60
1:B:917:ASN:H	1:B:918:TYR:CB	2.13	0.60
1:C:877:PHE:HA	1:C:880:LEU:HB3	1.82	0.60
1:C:660:PHE:HB3	1:C:661:LYS:C	2.22	0.60
1:D:582:SER:O	1:D:585:HIS:HB2	2.00	0.60
1:A:877:PHE:HA	1:A:880:LEU:HB3	1.82	0.60
1:A:1048:LYS:HZ3	1:B:1050:ARG:NH2	2.00	0.60
1:B:877:PHE:HA	1:B:880:LEU:HB3	1.82	0.60
1:C:553:HIS:CE1	1:C:583:PHE:HB3	2.37	0.60
1:D:660:PHE:HB3	1:D:661:LYS:C	2.23	0.60
1:B:553:HIS:CE1	1:B:583:PHE:HB3	2.36	0.59
1:C:809:TRP:O	1:C:813:THR:HG23	2.02	0.59
1:D:1050:ARG:NH2	1:C:1048:LYS:HZ3	2.00	0.59
1:D:997:LYS:HB2	1:D:998:VAL:HA	1.83	0.59
1:B:660:PHE:HB3	1:B:661:LYS:C	2.22	0.59
1:A:916:ILE:N	1:A:917:ASN:HA	2.18	0.59
1:A:891:LEU:HB3	1:A:892:LEU:HD22	1.85	0.59
1:A:990:LEU:HD11	1:A:994:PHE:HD2	1.68	0.59
1:B:809:TRP:O	1:B:813:THR:HG23	2.02	0.59
1:D:891:LEU:HB3	1:D:892:LEU:HD22	1.85	0.59
1:A:766:ASN:OD1	1:A:769:LEU:CB	2.51	0.59
1:D:766:ASN:OD1	1:D:769:LEU:CB	2.51	0.59
1:A:660:PHE:HB3	1:A:661:LYS:C	2.22	0.59
1:B:766:ASN:OD1	1:B:769:LEU:CB	2.51	0.59
1:D:553:HIS:CE1	1:D:583:PHE:HB3	2.37	0.59
1:D:809:TRP:O	1:D:813:THR:HG23	2.02	0.59
1:D:818:PHE:HD2	1:D:835:GLY:HA2	1.67	0.59
1:D:916:ILE:N	1:D:917:ASN:HA	2.18	0.59
1:A:824:VAL:HG12	1:A:825:GLU:N	2.18	0.58
1:B:818:PHE:HD2	1:B:835:GLY:HA2	1.67	0.58
1:C:891:LEU:HB3	1:C:892:LEU:HD22	1.85	0.58
1:B:891:LEU:HB3	1:B:892:LEU:HD22	1.85	0.58
1:B:824:VAL:HG12	1:B:825:GLU:N	2.18	0.58
1:D:990:LEU:HD11	1:D:994:PHE:HD2	1.68	0.58
1:A:990:LEU:HD11	1:A:994:PHE:CD2	2.39	0.58
1:B:990:LEU:HD11	1:B:994:PHE:CD2	2.39	0.58

Continued on next page...

Continued from previous page...

Atom-1	Atom-2	Interatomic distance (Å)	Clash overlap (Å)
1:B:990:LEU:HD11	1:B:994:PHE:HD2	1.68	0.58
1:D:824:VAL:HG12	1:D:825:GLU:N	2.18	0.58
1:A:809:TRP:O	1:A:813:THR:HG23	2.02	0.58
1:C:455:SER:HA	1:C:488:LEU:HB3	1.86	0.58
1:D:923:LEU:HD22	1:A:897:PRO:HG3	1.85	0.58
1:C:766:ASN:OD1	1:C:769:LEU:CB	2.51	0.58
1:C:990:LEU:HD11	1:C:994:PHE:CD2	2.39	0.58
1:D:455:SER:HA	1:D:488:LEU:HB3	1.86	0.58
1:D:990:LEU:HD11	1:D:994:PHE:CD2	2.39	0.58
1:B:452:PHE:CE1	1:B:1071:LYS:HE3	2.39	0.58
1:C:990:LEU:HD11	1:C:994:PHE:HD2	1.68	0.58
1:A:686:LEU:HD22	1:A:708:LEU:HD11	1.86	0.58
1:C:824:VAL:HG12	1:C:825:GLU:N	2.18	0.58
1:C:968:GLN:HA	1:C:971:ALA:HB2	1.85	0.58
1:B:1048:LYS:HZ3	1:C:1050:ARG:NH2	2.02	0.57
1:C:818:PHE:HD2	1:C:835:GLY:HA2	1.67	0.57
1:A:818:PHE:HD2	1:A:835:GLY:HA2	1.68	0.57
1:C:916:ILE:N	1:C:917:ASN:HA	2.18	0.57
1:D:686:LEU:HD22	1:D:708:LEU:HD11	1.86	0.57
1:B:851:GLN:O	1:B:857:GLY:HA2	2.05	0.57
1:B:916:ILE:N	1:B:917:ASN:HA	2.18	0.57
1:B:968:GLN:HA	1:B:971:ALA:HB2	1.85	0.57
1:A:851:GLN:O	1:A:857:GLY:HA2	2.05	0.57
1:C:452:PHE:CE1	1:C:1071:LYS:HE3	2.39	0.57
1:D:452:PHE:CE1	1:D:1071:LYS:HE3	2.39	0.57
1:B:455:SER:HA	1:B:488:LEU:HB3	1.86	0.57
1:C:480:LEU:HD12	1:C:481:HIS:HA	1.87	0.57
1:A:968:GLN:HA	1:A:971:ALA:HB2	1.85	0.57
1:B:686:LEU:HD22	1:B:708:LEU:HD11	1.86	0.57
1:B:480:LEU:HD12	1:B:481:HIS:HA	1.87	0.57
1:C:811:ILE:HD11	1:C:842:TYR:HD1	1.65	0.56
1:D:851:GLN:O	1:D:857:GLY:HA2	2.05	0.56
1:A:452:PHE:CE1	1:A:1071:LYS:HE3	2.39	0.56
1:A:480:LEU:HD12	1:A:481:HIS:HA	1.87	0.56
1:C:686:LEU:HD22	1:C:708:LEU:HD11	1.86	0.56
1:C:851:GLN:O	1:C:857:GLY:HA2	2.05	0.56
1:D:480:LEU:HD12	1:D:481:HIS:HA	1.87	0.56
1:D:968:GLN:HA	1:D:971:ALA:HB2	1.85	0.56
1:A:455:SER:HA	1:A:488:LEU:HB3	1.86	0.56
1:B:456:TYR:O	1:B:494:HIS:NE2	2.40	0.55
1:B:698:LEU:HD21	1:B:976:ILE:HG21	1.88	0.55

Continued on next page...

Continued from previous page...

Atom-1	Atom-2	Interatomic distance (Å)	Clash overlap (Å)
1:C:456:TYR:O	1:C:494:HIS:NE2	2.40	0.55
1:D:897:PRO:HG3	1:C:923:LEU:HD22	1.87	0.55
1:C:945:THR:HA	1:C:949:PRO:HD2	1.88	0.55
1:D:456:TYR:O	1:D:494:HIS:NE2	2.40	0.55
1:A:455:SER:HB2	1:A:488:LEU:HD23	1.89	0.55
1:C:698:LEU:HD21	1:C:976:ILE:HG21	1.87	0.55
1:C:480:LEU:HA	1:C:481:HIS:C	2.27	0.55
1:A:575:VAL:HA	1:A:610:LYS:HE3	1.88	0.55
1:A:698:LEU:HD21	1:A:976:ILE:HG21	1.87	0.55
1:A:687:ASN:O	1:A:690:VAL:HG12	2.07	0.55
1:D:945:THR:HA	1:D:949:PRO:HD2	1.88	0.55
1:D:698:LEU:HD21	1:D:976:ILE:HG21	1.88	0.55
1:A:480:LEU:HA	1:A:481:HIS:C	2.27	0.55
1:A:945:THR:HA	1:A:949:PRO:HD2	1.88	0.55
1:A:870:LEU:CD2	1:A:956:LEU:HD11	2.38	0.55
1:B:945:THR:HA	1:B:949:PRO:HD2	1.88	0.55
1:C:575:VAL:HA	1:C:610:LYS:HE3	1.88	0.55
1:D:687:ASN:O	1:D:690:VAL:HG12	2.07	0.54
1:A:456:TYR:O	1:A:494:HIS:NE2	2.39	0.54
1:A:876:VAL:HG11	1:B:859:PHE:CD2	2.42	0.54
1:D:1047:GLN:HE21	1:C:1051:LEU:CD1	2.13	0.54
1:B:455:SER:HB2	1:B:488:LEU:HD23	1.89	0.54
1:B:575:VAL:HA	1:B:610:LYS:HE3	1.88	0.54
1:B:870:LEU:CD2	1:B:956:LEU:HD11	2.37	0.54
1:B:876:VAL:HG11	1:C:859:PHE:CD2	2.42	0.54
1:B:687:ASN:O	1:B:690:VAL:HG12	2.07	0.54
1:D:480:LEU:HA	1:D:481:HIS:C	2.27	0.54
1:D:580:GLN:HG2	1:D:581:ALA:N	2.23	0.54
1:B:480:LEU:HA	1:B:481:HIS:C	2.27	0.54
1:C:455:SER:HB2	1:C:488:LEU:HD23	1.89	0.54
1:D:870:LEU:CD2	1:D:956:LEU:HD11	2.37	0.54
1:C:687:ASN:O	1:C:690:VAL:HG12	2.07	0.54
1:D:848:LEU:O	1:D:851:GLN:HB3	2.08	0.54
1:B:1051:LEU:CD1	1:C:1047:GLN:HE21	2.13	0.54
1:B:848:LEU:O	1:B:851:GLN:HB3	2.08	0.54
1:D:575:VAL:HA	1:D:610:LYS:HE3	1.88	0.54
1:D:455:SER:HB2	1:D:488:LEU:HD23	1.89	0.53
1:A:580:GLN:HG2	1:A:581:ALA:N	2.23	0.53
1:B:918:TYR:HD1	1:B:921:SER:HB3	1.74	0.53
1:A:848:LEU:O	1:A:851:GLN:HB3	2.08	0.53
1:B:977:ALA:HA	1:B:980:VAL:HG12	1.91	0.53

Continued on next page...

Continued from previous page...

Atom-1	Atom-2	Interatomic distance (Å)	Clash overlap (Å)
1:B:580:GLN:HG2	1:B:581:ALA:N	2.23	0.53
1:A:597:LEU:CD1	1:A:601:ARG:HH12	2.22	0.53
1:A:977:ALA:HA	1:A:980:VAL:HG12	1.91	0.53
1:C:870:LEU:CD2	1:C:956:LEU:HD11	2.37	0.53
1:C:977:ALA:HA	1:C:980:VAL:HG12	1.91	0.53
1:D:597:LEU:CD1	1:D:601:ARG:HH12	2.22	0.53
1:A:1047:GLN:HA	1:A:1050:ARG:HH21	1.74	0.53
1:D:876:VAL:HG11	1:A:859:PHE:CD2	2.44	0.53
1:C:710:LYS:O	1:C:713:ALA:N	2.41	0.53
1:D:518:LEU:HD12	1:D:521:ALA:HB3	1.91	0.53
1:B:619:ASN:O	1:B:622:PRO:HD2	2.09	0.53
1:C:580:GLN:HG2	1:C:581:ALA:N	2.23	0.53
1:A:918:TYR:HD1	1:A:921:SER:HB3	1.74	0.52
1:D:710:LYS:O	1:D:713:ALA:N	2.40	0.52
1:A:917:ASN:H	1:A:918:TYR:HB2	1.74	0.52
1:B:874:THR:HA	1:B:877:PHE:CZ	2.44	0.52
1:C:918:TYR:HD1	1:C:921:SER:HB3	1.74	0.52
1:D:977:ALA:HA	1:D:980:VAL:HG12	1.91	0.52
1:A:619:ASN:O	1:A:622:PRO:HD2	2.09	0.52
1:B:597:LEU:CD1	1:B:601:ARG:HH12	2.22	0.52
1:B:609:LEU:HB2	1:B:610:LYS:HG3	1.92	0.52
1:A:923:LEU:HD11	1:B:897:PRO:HB3	1.91	0.52
1:C:1047:GLN:HA	1:C:1050:ARG:HH21	1.74	0.52
1:C:874:THR:HA	1:C:877:PHE:CZ	2.44	0.52
1:D:619:ASN:O	1:D:622:PRO:HD2	2.09	0.52
1:B:824:VAL:HG12	1:B:825:GLU:H	1.75	0.52
1:C:917:ASN:H	1:C:918:TYR:HB2	1.73	0.52
1:D:859:PHE:O	1:D:862:MET:HB3	2.10	0.52
1:C:859:PHE:O	1:C:862:MET:HB3	2.10	0.52
1:D:874:THR:HA	1:D:877:PHE:CZ	2.44	0.52
1:D:918:TYR:HD1	1:D:921:SER:HB3	1.74	0.52
1:B:518:LEU:HD12	1:B:521:ALA:HB3	1.91	0.52
1:C:848:LEU:O	1:C:851:GLN:HB3	2.08	0.52
1:B:917:ASN:H	1:B:918:TYR:HB2	1.74	0.52
1:D:859:PHE:CD2	1:C:876:VAL:HG11	2.44	0.52
1:D:1047:GLN:HA	1:D:1050:ARG:HH21	1.74	0.52
1:D:917:ASN:H	1:D:918:TYR:HB2	1.74	0.52
1:A:859:PHE:O	1:A:862:MET:HB3	2.10	0.52
1:A:874:THR:HA	1:A:877:PHE:CZ	2.44	0.52
1:A:1061:GLN:NE2	1:B:1061:GLN:HE22	2.08	0.52
1:A:491:LYS:HG3	1:A:492:ASN:OD1	2.11	0.52

Continued on next page...

Continued from previous page...

Atom-1	Atom-2	Interatomic distance (Å)	Clash overlap (Å)
1:D:824:VAL:HG12	1:D:825:GLU:H	1.75	0.52
1:A:518:LEU:HD12	1:A:521:ALA:HB3	1.91	0.51
1:B:1047:GLN:HA	1:B:1050:ARG:HH21	1.74	0.51
1:B:491:LYS:HG3	1:B:492:ASN:OD1	2.11	0.51
1:D:1061:GLN:NE2	1:A:1061:GLN:HE22	2.08	0.51
1:A:885:GLY:O	1:A:904:SER:OG	2.28	0.51
1:C:597:LEU:CD1	1:C:601:ARG:HH12	2.22	0.51
1:C:619:ASN:O	1:C:622:PRO:HD2	2.09	0.51
1:D:609:LEU:HB2	1:D:610:LYS:HG3	1.92	0.51
1:D:726:TYR:HE2	1:D:846:PHE:HB2	1.76	0.51
1:C:518:LEU:HD12	1:C:521:ALA:HB3	1.91	0.51
1:D:885:GLY:O	1:D:904:SER:OG	2.28	0.51
1:A:824:VAL:HG12	1:A:825:GLU:H	1.75	0.51
1:C:609:LEU:HB2	1:C:610:LYS:HG3	1.92	0.51
1:C:824:VAL:HG12	1:C:825:GLU:H	1.75	0.51
1:C:726:TYR:HE2	1:C:846:PHE:HB2	1.76	0.51
1:B:859:PHE:O	1:B:862:MET:HB3	2.10	0.51
1:B:1061:GLN:NE2	1:C:1061:GLN:HE22	2.09	0.51
1:C:885:GLY:O	1:C:904:SER:OG	2.29	0.51
1:A:620:LYS:O	1:A:623:ILE:HB	2.11	0.51
1:A:609:LEU:HB2	1:A:610:LYS:HG3	1.92	0.50
1:B:885:GLY:O	1:B:904:SER:OG	2.29	0.50
1:C:491:LYS:HG3	1:C:492:ASN:OD1	2.10	0.50
1:B:710:LYS:O	1:B:713:ALA:N	2.41	0.50
1:B:923:LEU:HD11	1:C:897:PRO:HB3	1.92	0.50
1:D:491:LYS:HG3	1:D:492:ASN:OD1	2.11	0.50
1:C:773:CYS:O	1:C:777:VAL:HG23	2.12	0.50
1:D:773:CYS:O	1:D:777:VAL:HG23	2.12	0.50
1:D:897:PRO:HB3	1:C:923:LEU:HD11	1.94	0.50
1:A:710:LYS:O	1:A:713:ALA:N	2.40	0.50
1:B:620:LYS:O	1:B:623:ILE:HB	2.11	0.50
1:D:620:LYS:O	1:D:623:ILE:HB	2.11	0.50
1:D:723:LEU:HD23	1:D:727:CYS:HB2	1.94	0.50
1:A:1048:LYS:HZ1	1:B:1050:ARG:HH12	1.60	0.50
1:A:726:TYR:HE2	1:A:846:PHE:HB2	1.76	0.50
1:A:723:LEU:HD23	1:A:727:CYS:HB2	1.94	0.50
1:B:773:CYS:O	1:B:777:VAL:HG23	2.12	0.50
1:B:723:LEU:HD23	1:B:727:CYS:HB2	1.94	0.49
1:B:1048:LYS:HZ1	1:C:1050:ARG:HH12	1.58	0.49
1:C:620:LYS:O	1:C:623:ILE:HB	2.11	0.49
1:C:723:LEU:HD23	1:C:727:CYS:HB2	1.94	0.49

Continued on next page...

Continued from previous page...

Atom-1	Atom-2	Interatomic distance (Å)	Clash overlap (Å)
1:A:981:GLU:O	1:A:984:THR:HG22	2.13	0.49
1:B:1047:GLN:HA	1:B:1050:ARG:NH2	2.28	0.49
1:B:726:TYR:HE2	1:B:846:PHE:HB2	1.76	0.49
1:C:872:ARG:O	1:C:875:VAL:HG12	2.13	0.49
1:A:773:CYS:O	1:A:777:VAL:HG23	2.12	0.49
1:D:918:TYR:CD1	1:D:921:SER:HB3	2.47	0.49
1:C:1047:GLN:HA	1:C:1050:ARG:NH2	2.28	0.49
1:D:496:LYS:HA	1:D:496:LYS:HZ2	1.75	0.49
1:D:981:GLU:O	1:D:984:THR:HG22	2.12	0.49
1:C:918:TYR:CD1	1:C:921:SER:HB3	2.47	0.49
1:D:618:GLY:HA2	1:D:619:ASN:HA	1.61	0.49
1:B:872:ARG:O	1:B:875:VAL:HG12	2.12	0.49
1:B:918:TYR:CD1	1:B:921:SER:HB3	2.47	0.49
1:A:863:LEU:HA	1:A:866:ILE:HG22	1.95	0.48
1:C:468:ASP:N	1:C:469:ILE:HA	2.23	0.48
1:D:516:THR:HG22	1:D:517:ALA:N	2.28	0.48
1:A:1047:GLN:HA	1:A:1050:ARG:NH2	2.28	0.48
1:B:446:LYS:HA	1:B:447:LYS:HA	1.54	0.48
1:A:730:LEU:HA	1:A:842:TYR:CE2	2.48	0.48
1:D:863:LEU:HA	1:D:866:ILE:HG22	1.96	0.48
1:D:872:ARG:O	1:D:875:VAL:HG12	2.12	0.48
1:A:872:ARG:O	1:A:875:VAL:HG12	2.12	0.48
1:A:918:TYR:CD1	1:A:921:SER:HB3	2.48	0.48
1:B:818:PHE:HD1	1:B:819:VAL:HG22	1.78	0.48
1:C:863:LEU:HA	1:C:866:ILE:HG22	1.95	0.48
1:D:730:LEU:HA	1:D:842:TYR:CE2	2.49	0.48
1:D:745:ALA:O	1:D:746:PHE:HB2	2.14	0.48
1:B:981:GLU:O	1:B:984:THR:HG22	2.12	0.48
1:D:1047:GLN:HA	1:D:1050:ARG:NH2	2.28	0.48
1:A:629:TYR:HA	1:A:697:LEU:HD21	1.96	0.48
1:A:745:ALA:O	1:A:746:PHE:HB2	2.14	0.48
1:A:818:PHE:HD1	1:A:819:VAL:HG22	1.78	0.48
1:B:863:LEU:HA	1:B:866:ILE:HG22	1.95	0.48
1:A:591:LYS:N	1:A:591:LYS:HD2	2.29	0.48
1:C:629:TYR:HA	1:C:697:LEU:HD21	1.96	0.48
1:C:818:PHE:HD1	1:C:819:VAL:HG22	1.78	0.48
1:B:591:LYS:HD2	1:B:591:LYS:N	2.29	0.47
1:B:730:LEU:HA	1:B:842:TYR:CE2	2.49	0.47
1:C:981:GLU:O	1:C:984:THR:HG22	2.13	0.47
1:D:818:PHE:HD1	1:D:819:VAL:HG22	1.78	0.47
1:B:1048:LYS:HZ1	1:C:1050:ARG:NH1	2.13	0.47

Continued on next page...

Continued from previous page...

Atom-1	Atom-2	Interatomic distance (Å)	Clash overlap (Å)
1:C:730:LEU:HA	1:C:842:TYR:CE2	2.49	0.47
1:D:629:TYR:HA	1:D:697:LEU:HD21	1.96	0.47
1:D:867:LEU:O	1:D:870:LEU:HB3	2.15	0.47
1:A:819:VAL:HG12	1:A:819:VAL:O	2.14	0.47
1:B:856:CYS:O	1:B:859:PHE:N	2.46	0.47
1:D:1061:GLN:HE22	1:C:1061:GLN:NE2	2.11	0.47
1:C:591:LYS:N	1:C:591:LYS:HD2	2.29	0.47
1:C:867:LEU:O	1:C:870:LEU:HB3	2.15	0.47
1:A:1066:LYS:HA	1:A:1069:ILE:HD12	1.97	0.47
1:A:649:LYS:HA	1:A:1005:VAL:O	2.15	0.47
1:B:629:TYR:HA	1:B:697:LEU:HD21	1.96	0.47
1:C:745:ALA:O	1:C:746:PHE:HB2	2.14	0.47
1:D:820:LEU:HD23	1:D:820:LEU:HA	1.74	0.47
1:B:922:PHE:N	1:B:922:PHE:HD1	2.13	0.47
1:C:1042:MET:C	1:C:1042:MET:SD	2.93	0.47
1:C:516:THR:HG22	1:C:517:ALA:N	2.28	0.47
1:C:547:ASP:N	1:C:547:ASP:OD1	2.48	0.47
1:A:547:ASP:N	1:A:547:ASP:OD1	2.48	0.47
1:B:1042:MET:C	1:B:1042:MET:SD	2.93	0.47
1:C:690:VAL:HG21	1:C:977:ALA:HB2	1.97	0.47
1:D:1048:LYS:HZ1	1:A:1050:ARG:HH12	1.63	0.47
1:A:516:THR:HG22	1:A:517:ALA:N	2.27	0.47
1:A:812:TYR:O	1:A:816:ILE:HG12	2.15	0.47
1:A:922:PHE:N	1:A:922:PHE:CD1	2.83	0.47
1:B:812:TYR:O	1:B:816:ILE:HG12	2.15	0.47
1:B:878:ILE:HD12	1:B:878:ILE:HA	1.80	0.47
1:C:693:ASN:O	1:C:695:ILE:HG22	2.14	0.47
1:D:1051:LEU:CD1	1:A:1047:GLN:HE21	2.11	0.47
1:A:1051:LEU:CD1	1:B:1047:GLN:HE21	2.11	0.47
1:A:446:LYS:HA	1:A:447:LYS:HA	1.54	0.47
1:A:690:VAL:HG21	1:A:977:ALA:HB2	1.97	0.47
1:A:867:LEU:O	1:A:870:LEU:HB3	2.15	0.47
1:B:819:VAL:HG12	1:B:819:VAL:O	2.14	0.47
1:B:867:LEU:O	1:B:870:LEU:HB3	2.15	0.47
1:C:640:PHE:CD2	1:C:642:MET:HB3	2.47	0.47
1:C:922:PHE:N	1:C:922:PHE:HD1	2.13	0.47
1:B:649:LYS:HA	1:B:1005:VAL:O	2.15	0.47
1:B:690:VAL:HG21	1:B:977:ALA:HB2	1.97	0.47
1:C:819:VAL:HG12	1:C:819:VAL:O	2.14	0.47
1:D:652:ARG:NH1	1:D:702:VAL:O	2.42	0.47
1:D:819:VAL:O	1:D:819:VAL:HG12	2.14	0.47

Continued on next page...

Continued from previous page...

Atom-1	Atom-2	Interatomic distance (Å)	Clash overlap (Å)
1:D:923:LEU:HD11	1:A:897:PRO:HB3	1.97	0.47
1:A:693:ASN:O	1:A:695:ILE:HG22	2.14	0.47
1:A:808:GLU:O	1:A:812:TYR:HD2	1.97	0.47
1:A:839:VAL:O	1:A:842:TYR:HB3	2.15	0.47
1:A:922:PHE:N	1:A:922:PHE:HD1	2.13	0.47
1:B:693:ASN:O	1:B:695:ILE:HG22	2.14	0.47
1:D:534:LEU:HD22	1:D:570:HIS:ND1	2.30	0.47
1:D:591:LYS:HD2	1:D:591:LYS:N	2.29	0.47
1:D:615:ASN:HA	1:D:616:SER:HA	1.50	0.47
1:D:690:VAL:HG21	1:D:977:ALA:HB2	1.97	0.47
1:A:1042:MET:SD	1:A:1042:MET:C	2.93	0.47
1:B:1042:MET:O	1:B:1045:LEU:N	2.48	0.47
1:B:1066:LYS:HA	1:B:1069:ILE:HD12	1.97	0.47
1:B:659:ASN:C	1:B:660:PHE:HD1	2.19	0.47
1:B:742:PRO:HA	1:B:832:TRP:HE1	1.80	0.47
1:B:808:GLU:O	1:B:812:TYR:HD2	1.97	0.47
1:C:1042:MET:O	1:C:1045:LEU:N	2.48	0.47
1:C:922:PHE:N	1:C:922:PHE:CD1	2.83	0.47
1:D:589:HIS:O	1:D:591:LYS:NZ	2.39	0.47
1:A:682:PRO:O	1:A:683:LEU:HB2	2.15	0.46
1:B:652:ARG:NH1	1:B:702:VAL:O	2.41	0.46
1:C:1066:LYS:HA	1:C:1069:ILE:HD12	1.97	0.46
1:C:534:LEU:HD22	1:C:570:HIS:ND1	2.30	0.46
1:D:1057:LEU:O	1:D:1057:LEU:HD23	2.15	0.46
1:D:526:TYR:O	1:D:530:MET:HE3	2.15	0.46
1:D:693:ASN:O	1:D:695:ILE:HG22	2.14	0.46
1:D:742:PRO:HA	1:D:832:TRP:HE1	1.81	0.46
1:D:922:PHE:HD1	1:D:922:PHE:N	2.13	0.46
1:A:534:LEU:HD22	1:A:570:HIS:ND1	2.30	0.46
1:B:534:LEU:HD22	1:B:570:HIS:ND1	2.30	0.46
1:B:658:TYR:N	1:B:659:ASN:HA	2.30	0.46
1:B:707:LEU:O	1:B:711:TRP:HB2	2.16	0.46
1:B:745:ALA:O	1:B:746:PHE:HB2	2.14	0.46
1:C:649:LYS:HA	1:C:1005:VAL:O	2.15	0.46
1:D:1042:MET:O	1:D:1045:LEU:N	2.48	0.46
1:D:649:LYS:HA	1:D:1005:VAL:O	2.15	0.46
1:D:1074:ILE:H	1:A:458:ARG:NH2	2.13	0.46
1:B:547:ASP:OD1	1:B:547:ASP:N	2.48	0.46
1:C:659:ASN:C	1:C:660:PHE:HD1	2.19	0.46
1:D:658:TYR:N	1:D:659:ASN:HA	2.30	0.46
1:A:1042:MET:O	1:A:1045:LEU:N	2.48	0.46

Continued on next page...

Continued from previous page...

Atom-1	Atom-2	Interatomic distance (Å)	Clash overlap (Å)
1:A:1057:LEU:HD23	1:A:1057:LEU:O	2.15	0.46
1:A:557:ARG:O	1:A:592:ARG:NE	2.48	0.46
1:A:658:TYR:N	1:A:659:ASN:HA	2.30	0.46
1:B:839:VAL:O	1:B:842:TYR:HB3	2.15	0.46
1:C:557:ARG:O	1:C:592:ARG:NE	2.48	0.46
1:D:1042:MET:C	1:D:1042:MET:SD	2.93	0.46
1:D:468:ASP:N	1:D:469:ILE:HA	2.23	0.46
1:D:839:VAL:O	1:D:842:TYR:HB3	2.15	0.46
1:A:496:LYS:HA	1:A:496:LYS:HZ3	1.80	0.46
1:A:742:PRO:HA	1:A:832:TRP:HE1	1.80	0.46
1:B:602:SER:HA	1:B:603:LYS:HA	1.48	0.46
1:C:808:GLU:O	1:C:812:TYR:HD2	1.97	0.46
1:C:839:VAL:O	1:C:842:TYR:HB3	2.15	0.46
1:D:659:ASN:C	1:D:660:PHE:HD1	2.19	0.46
1:A:550:THR:O	1:A:553:HIS:N	2.48	0.46
1:B:550:THR:O	1:B:553:HIS:N	2.48	0.46
1:C:682:PRO:O	1:C:683:LEU:HB2	2.15	0.46
1:C:742:PRO:HA	1:C:832:TRP:HE1	1.80	0.46
1:D:808:GLU:O	1:D:812:TYR:HD2	1.97	0.46
1:D:812:TYR:O	1:D:816:ILE:HG12	2.15	0.46
1:D:922:PHE:N	1:D:922:PHE:CD1	2.83	0.46
1:A:659:ASN:C	1:A:660:PHE:HD1	2.19	0.46
1:B:682:PRO:O	1:B:683:LEU:HB2	2.15	0.46
1:D:707:LEU:O	1:D:711:TRP:HB2	2.16	0.46
1:A:1074:ILE:H	1:B:458:ARG:NH2	2.14	0.46
1:C:707:LEU:O	1:C:711:TRP:HB2	2.16	0.46
1:D:547:ASP:OD1	1:D:547:ASP:N	2.48	0.46
1:D:632:GLU:OE1	1:D:700:HIS:ND1	2.49	0.46
1:D:820:LEU:O	1:D:823:PHE:N	2.46	0.46
1:A:632:GLU:OE1	1:A:700:HIS:ND1	2.49	0.46
1:A:707:LEU:O	1:A:711:TRP:HB2	2.16	0.46
1:B:557:ARG:O	1:B:592:ARG:NE	2.48	0.46
1:D:1066:LYS:HA	1:D:1069:ILE:HD12	1.97	0.46
1:A:856:CYS:O	1:A:858:ILE:N	2.49	0.46
1:B:526:TYR:O	1:B:530:MET:HE3	2.16	0.46
1:B:922:PHE:N	1:B:922:PHE:CD1	2.83	0.46
1:C:1057:LEU:O	1:C:1057:LEU:HD23	2.15	0.46
1:B:1051:LEU:HD22	1:C:1047:GLN:HE22	1.82	0.45
1:B:913:LEU:HD12	1:B:913:LEU:O	2.17	0.45
1:A:640:PHE:CD2	1:A:642:MET:HB3	2.47	0.45
1:A:815:GLY:O	1:A:818:PHE:HB3	2.16	0.45

Continued on next page...

Continued from previous page...

Atom-1	Atom-2	Interatomic distance (Å)	Clash overlap (Å)
1:B:808:GLU:O	1:B:812:TYR:CD2	2.70	0.45
1:C:652:ARG:NH1	1:C:702:VAL:O	2.42	0.45
1:C:812:TYR:O	1:C:816:ILE:HG12	2.15	0.45
1:C:856:CYS:O	1:C:858:ILE:N	2.49	0.45
1:C:913:LEU:O	1:C:913:LEU:HD12	2.17	0.45
1:D:446:LYS:HA	1:D:447:LYS:HA	1.54	0.45
1:D:640:PHE:CD2	1:D:642:MET:HB3	2.47	0.45
1:D:682:PRO:O	1:D:683:LEU:HB2	2.15	0.45
1:D:852:ARG:HD3	1:D:982:LEU:HG	1.98	0.45
1:A:526:TYR:O	1:A:530:MET:HE3	2.17	0.45
1:A:913:LEU:HD12	1:A:913:LEU:O	2.17	0.45
1:B:533:ILE:O	1:B:536:THR:OG1	2.34	0.45
1:B:632:GLU:OE1	1:B:700:HIS:ND1	2.49	0.45
1:C:658:TYR:N	1:C:659:ASN:HA	2.30	0.45
1:C:925:PRO:O	1:C:929:ASN:N	2.48	0.45
1:D:815:GLY:O	1:D:818:PHE:HB3	2.16	0.45
1:A:602:SER:HA	1:A:603:LYS:HA	1.48	0.45
1:C:527:THR:OG1	1:C:528:GLN:N	2.50	0.45
1:C:815:GLY:O	1:C:818:PHE:HB3	2.16	0.45
1:D:557:ARG:O	1:D:592:ARG:NE	2.48	0.45
1:A:1048:LYS:HZ1	1:B:1050:ARG:NH1	2.14	0.45
1:A:808:GLU:O	1:A:812:TYR:CD2	2.70	0.45
1:D:1050:ARG:HH12	1:C:1048:LYS:HZ1	1.64	0.45
1:C:856:CYS:O	1:C:859:PHE:N	2.46	0.45
1:B:815:GLY:O	1:B:818:PHE:HB3	2.16	0.45
1:B:852:ARG:O	1:B:853:PHE:HB2	2.16	0.45
1:D:856:CYS:O	1:D:858:ILE:N	2.49	0.45
1:A:615:ASN:HA	1:A:616:SER:HA	1.50	0.45
1:C:533:ILE:O	1:C:536:THR:OG1	2.34	0.45
1:C:820:LEU:O	1:C:823:PHE:N	2.46	0.45
1:D:533:ILE:O	1:D:536:THR:OG1	2.34	0.45
1:A:852:ARG:O	1:A:853:PHE:HB2	2.16	0.45
1:A:876:VAL:HG11	1:B:859:PHE:CE2	2.52	0.45
1:B:1057:LEU:O	1:B:1057:LEU:HD23	2.15	0.45
1:C:808:GLU:O	1:C:812:TYR:CD2	2.70	0.45
1:C:852:ARG:O	1:C:853:PHE:HB2	2.16	0.45
1:A:1051:LEU:HD22	1:B:1047:GLN:HE22	1.82	0.45
1:A:553:HIS:ND1	1:A:583:PHE:HB3	2.32	0.45
1:A:618:GLY:HA2	1:A:619:ASN:HA	1.61	0.45
1:A:871:LEU:HA	1:A:874:THR:HG22	1.99	0.45
1:B:516:THR:HG22	1:B:517:ALA:N	2.27	0.45

Continued on next page...

Continued from previous page...

Atom-1	Atom-2	Interatomic distance (Å)	Clash overlap (Å)
1:D:527:THR:OG1	1:D:528:GLN:N	2.50	0.45
1:A:533:ILE:O	1:A:536:THR:OG1	2.34	0.44
1:B:631:PRO:O	1:B:632:GLU:C	2.56	0.44
1:B:852:ARG:HD3	1:B:982:LEU:HG	1.98	0.44
1:C:526:TYR:O	1:C:530:MET:HE3	2.16	0.44
1:C:631:PRO:O	1:C:632:GLU:C	2.56	0.44
1:C:632:GLU:OE1	1:C:700:HIS:ND1	2.49	0.44
1:C:878:ILE:HA	1:C:878:ILE:HD12	1.80	0.44
1:B:856:CYS:O	1:B:858:ILE:N	2.49	0.44
1:C:728:LEU:O	1:C:732:PRO:HG2	2.17	0.44
1:D:553:HIS:ND1	1:D:583:PHE:HB3	2.32	0.44
1:D:596:VAL:HA	1:D:599:ILE:HG22	1.99	0.44
1:B:640:PHE:CD2	1:B:642:MET:HB3	2.47	0.44
1:C:820:LEU:HD23	1:C:820:LEU:HA	1.74	0.44
1:C:695:ILE:HB	1:C:973:LEU:HD21	1.99	0.44
1:D:852:ARG:O	1:D:853:PHE:HB2	2.16	0.44
1:A:695:ILE:HB	1:A:973:LEU:HD21	1.99	0.44
1:D:808:GLU:O	1:D:812:TYR:CD2	2.70	0.44
1:B:695:ILE:HB	1:B:973:LEU:HD21	1.99	0.44
1:C:852:ARG:HD3	1:C:982:LEU:HG	1.98	0.44
1:D:913:LEU:O	1:D:913:LEU:HD12	2.17	0.44
1:A:558:GLU:H	1:A:558:GLU:HG2	1.64	0.44
1:A:596:VAL:HA	1:A:599:ILE:HG22	1.99	0.44
1:A:652:ARG:NH1	1:A:702:VAL:O	2.42	0.44
1:B:728:LEU:O	1:B:732:PRO:HG2	2.17	0.44
1:C:553:HIS:ND1	1:C:583:PHE:HB3	2.32	0.44
1:C:871:LEU:HA	1:C:874:THR:HG22	1.99	0.44
1:D:550:THR:O	1:D:553:HIS:N	2.48	0.44
1:A:527:THR:OG1	1:A:528:GLN:N	2.50	0.44
1:B:553:HIS:ND1	1:B:583:PHE:HB3	2.32	0.44
1:B:876:VAL:HG11	1:C:859:PHE:CE2	2.53	0.44
1:D:458:ARG:NH2	1:C:1074:ILE:H	2.15	0.44
1:C:446:LYS:HA	1:C:447:LYS:HA	1.54	0.44
1:C:496:LYS:HA	1:C:496:LYS:HZ2	1.81	0.44
1:D:1048:LYS:HZ3	1:A:1050:ARG:HH22	1.64	0.44
1:D:631:PRO:O	1:D:632:GLU:C	2.56	0.44
1:D:886:LEU:O	1:D:889:TYR:HB3	2.18	0.44
1:A:631:PRO:O	1:A:632:GLU:C	2.56	0.44
1:B:527:THR:OG1	1:B:528:GLN:N	2.50	0.44
1:B:615:ASN:HA	1:B:616:SER:HA	1.50	0.44
1:B:886:LEU:O	1:B:889:TYR:HB3	2.18	0.44

Continued on next page...

Continued from previous page...

Atom-1	Atom-2	Interatomic distance (Å)	Clash overlap (Å)
1:C:886:LEU:O	1:C:889:TYR:HB3	2.18	0.44
1:D:518:LEU:HD11	1:D:530:MET:HG3	2.00	0.44
1:B:871:LEU:HA	1:B:874:THR:HG22	1.99	0.44
1:A:852:ARG:HD3	1:A:982:LEU:HG	1.98	0.43
1:B:1042:MET:O	1:B:1043:GLU:C	2.57	0.43
1:C:596:VAL:HA	1:C:599:ILE:HG22	1.99	0.43
1:D:695:ILE:HB	1:D:973:LEU:HD21	1.99	0.43
1:A:710:LYS:HG3	1:A:711:TRP:H	1.83	0.43
1:A:728:LEU:O	1:A:732:PRO:HG2	2.17	0.43
1:C:518:LEU:HD11	1:C:530:MET:HG3	2.00	0.43
1:D:728:LEU:O	1:D:732:PRO:HG2	2.17	0.43
1:D:768:TYR:O	1:D:772:THR:HG23	2.18	0.43
1:D:933:HIS:NE2	1:A:833:GLN:CB	2.81	0.43
1:A:709:MET:O	1:A:712:LEU:HB3	2.18	0.43
1:A:768:TYR:O	1:A:772:THR:HG23	2.19	0.43
1:D:1047:GLN:HE22	1:C:1051:LEU:HD22	1.83	0.43
1:D:709:MET:O	1:D:712:LEU:HB3	2.18	0.43
1:D:856:CYS:O	1:D:859:PHE:N	2.46	0.43
1:D:871:LEU:HA	1:D:874:THR:HG22	1.99	0.43
1:A:1042:MET:O	1:A:1043:GLU:C	2.57	0.43
1:A:621:CYS:SG	1:A:622:PRO:HD3	2.58	0.43
1:B:496:LYS:HZ2	1:B:496:LYS:HA	1.80	0.43
1:B:621:CYS:SG	1:B:622:PRO:HD3	2.58	0.43
1:B:710:LYS:HG3	1:B:711:TRP:H	1.84	0.43
1:A:818:PHE:HD2	1:A:835:GLY:CA	2.32	0.43
1:C:1070:GLN:NE2	1:C:1070:GLN:O	2.52	0.43
1:C:502:LEU:HA	1:C:505:GLY:HA2	2.01	0.43
1:C:768:TYR:O	1:C:772:THR:HG23	2.18	0.43
1:C:743:GLY:N	1:C:832:TRP:HE1	2.14	0.43
1:A:997:LYS:CB	1:A:998:VAL:HA	2.46	0.43
1:B:618:GLY:HA2	1:B:619:ASN:HA	1.61	0.43
1:C:656:ILE:HG13	1:C:656:ILE:H	1.64	0.43
1:C:709:MET:O	1:C:712:LEU:HB3	2.19	0.43
1:B:1074:ILE:H	1:C:458:ARG:NH2	2.17	0.43
1:B:596:VAL:HA	1:B:599:ILE:HG22	1.99	0.43
1:C:710:LYS:HG3	1:C:711:TRP:H	1.84	0.43
1:D:874:THR:O	1:D:878:ILE:HB	2.19	0.43
1:B:611:ILE:O	1:B:612:PHE:HB2	2.19	0.43
1:B:709:MET:O	1:B:712:LEU:HB3	2.18	0.43
1:B:818:PHE:HD2	1:B:835:GLY:CA	2.32	0.43
1:B:997:LYS:CB	1:B:998:VAL:HA	2.46	0.43

Continued on next page...

Continued from previous page...

Atom-1	Atom-2	Interatomic distance (Å)	Clash overlap (Å)
1:C:457:GLY:HA3	1:C:494:HIS:CD2	2.54	0.43
1:C:611:ILE:O	1:C:612:PHE:HB2	2.19	0.43
1:D:502:LEU:HA	1:D:505:GLY:HA2	2.01	0.43
1:D:621:CYS:SG	1:D:622:PRO:HD3	2.58	0.43
1:D:632:GLU:HA	1:D:632:GLU:OE1	2.19	0.43
1:A:632:GLU:OE1	1:A:632:GLU:HA	2.19	0.43
1:A:874:THR:O	1:A:878:ILE:HB	2.19	0.43
1:C:1042:MET:O	1:C:1043:GLU:C	2.57	0.43
1:D:1070:GLN:O	1:D:1070:GLN:NE2	2.52	0.43
1:A:603:LYS:HE2	1:A:603:LYS:HB2	1.77	0.43
1:A:730:LEU:N	1:A:842:TYR:OH	2.52	0.43
1:B:502:LEU:HA	1:B:505:GLY:HA2	2.01	0.43
1:B:518:LEU:HD11	1:B:530:MET:HG3	2.00	0.43
1:B:632:GLU:OE1	1:B:632:GLU:HA	2.19	0.43
1:B:730:LEU:N	1:B:842:TYR:OH	2.52	0.43
1:B:925:PRO:O	1:B:929:ASN:N	2.48	0.43
1:C:621:CYS:SG	1:C:622:PRO:HD3	2.58	0.43
1:C:931:LEU:HD12	1:C:931:LEU:O	2.19	0.43
1:D:457:GLY:HA3	1:D:494:HIS:CD2	2.54	0.43
1:D:936:LEU:HD13	1:A:837:ILE:HD11	2.01	0.43
1:A:502:LEU:HA	1:A:505:GLY:HA2	2.01	0.42
1:C:895:GLN:NE2	1:C:896:ASP:O	2.52	0.42
1:D:730:LEU:N	1:D:842:TYR:OH	2.52	0.42
1:D:909:PHE:CE2	1:C:942:VAL:HG23	2.54	0.42
1:D:1051:LEU:HD22	1:A:1047:GLN:HE22	1.84	0.42
1:A:1070:GLN:O	1:A:1070:GLN:NE2	2.52	0.42
1:A:518:LEU:HD11	1:A:530:MET:HG3	2.00	0.42
1:A:811:ILE:HD12	1:A:842:TYR:HA	2.01	0.42
1:A:886:LEU:O	1:A:889:TYR:HB3	2.18	0.42
1:B:457:GLY:HA3	1:B:494:HIS:CD2	2.54	0.42
1:B:695:ILE:HG21	1:B:973:LEU:HD11	2.02	0.42
1:C:695:ILE:HG21	1:C:973:LEU:HD11	2.02	0.42
1:D:611:ILE:O	1:D:612:PHE:HB2	2.19	0.42
1:D:916:ILE:CG2	1:D:919:ARG:HB2	2.50	0.42
1:B:973:LEU:HA	1:B:973:LEU:HD23	1.86	0.42
1:C:584:LEU:HD22	1:C:619:ASN:OD1	2.20	0.42
1:C:874:THR:O	1:C:878:ILE:HB	2.19	0.42
1:D:584:LEU:HD22	1:D:619:ASN:OD1	2.20	0.42
1:D:695:ILE:HG21	1:D:973:LEU:HD11	2.02	0.42
1:D:629:TYR:N	1:D:697:LEU:HD11	2.23	0.42
1:D:743:GLY:N	1:D:832:TRP:HE1	2.14	0.42

Continued on next page...

Continued from previous page...

Atom-1	Atom-2	Interatomic distance (Å)	Clash overlap (Å)
1:B:468:ASP:N	1:B:469:ILE:HA	2.23	0.42
1:B:811:ILE:HD12	1:B:842:TYR:HA	2.01	0.42
1:B:829:HIS:ND1	1:B:829:HIS:C	2.73	0.42
1:C:730:LEU:N	1:C:842:TYR:OH	2.52	0.42
1:C:719:HIS:NE2	1:C:852:ARG:HD2	2.35	0.42
1:D:1048:LYS:HZ1	1:A:1050:ARG:NH1	2.17	0.42
1:D:850:LEU:HD23	1:D:850:LEU:HA	1.79	0.42
1:D:895:GLN:NE2	1:D:896:ASP:O	2.52	0.42
1:A:611:ILE:O	1:A:612:PHE:HB2	2.19	0.42
1:A:990:LEU:HA	1:A:991:PRO:HD3	1.88	0.42
1:B:768:TYR:O	1:B:772:THR:HG23	2.18	0.42
1:D:597:LEU:HD13	1:D:601:ARG:HH12	1.84	0.42
1:D:736:LEU:HD13	1:D:773:CYS:SG	2.60	0.42
1:A:916:ILE:CG2	1:A:919:ARG:HB2	2.50	0.42
1:A:695:ILE:HG21	1:A:973:LEU:HD11	2.02	0.42
1:B:719:HIS:NE2	1:B:852:ARG:HD2	2.35	0.42
1:B:874:THR:O	1:B:878:ILE:HB	2.19	0.42
1:C:948:VAL:HB	1:C:949:PRO:HD3	2.02	0.42
1:D:818:PHE:HD2	1:D:835:GLY:CA	2.32	0.42
1:A:584:LEU:HD22	1:A:619:ASN:OD1	2.20	0.42
1:A:719:HIS:NE2	1:A:852:ARG:HD2	2.35	0.42
1:B:1070:GLN:O	1:B:1070:GLN:NE2	2.52	0.42
1:B:948:VAL:HB	1:B:949:PRO:HD3	2.02	0.42
1:C:512:HIS:C	1:C:512:HIS:CD2	2.93	0.42
1:D:931:LEU:O	1:D:931:LEU:HD12	2.19	0.42
1:A:457:GLY:HA3	1:A:494:HIS:CD2	2.54	0.42
1:A:597:LEU:HD13	1:A:601:ARG:HH12	1.84	0.42
1:A:829:HIS:C	1:A:829:HIS:ND1	2.72	0.42
1:B:931:LEU:HD12	1:B:931:LEU:O	2.20	0.42
1:C:632:GLU:HA	1:C:632:GLU:OE1	2.19	0.42
1:D:1042:MET:O	1:D:1043:GLU:C	2.57	0.42
1:D:948:VAL:HB	1:D:949:PRO:HD3	2.02	0.42
1:A:931:LEU:O	1:A:931:LEU:HD12	2.19	0.42
1:B:916:ILE:CG2	1:B:919:ARG:HB2	2.49	0.42
1:C:736:LEU:HD13	1:C:773:CYS:SG	2.60	0.42
1:C:916:ILE:CG2	1:C:919:ARG:HB2	2.49	0.42
1:D:602:SER:HA	1:D:603:LYS:HA	1.48	0.42
1:D:710:LYS:HG3	1:D:711:TRP:H	1.84	0.42
1:D:829:HIS:C	1:D:829:HIS:ND1	2.73	0.42
1:A:895:GLN:NE2	1:A:896:ASP:O	2.52	0.42
1:A:923:LEU:CD1	1:B:897:PRO:HB3	2.50	0.42

Continued on next page...

Continued from previous page...

Atom-1	Atom-2	Interatomic distance (Å)	Clash overlap (Å)
1:C:550:THR:O	1:C:553:HIS:N	2.47	0.42
1:C:829:HIS:C	1:C:829:HIS:ND1	2.73	0.42
1:D:512:HIS:C	1:D:512:HIS:CD2	2.93	0.42
1:D:874:THR:HA	1:D:877:PHE:CE2	2.55	0.42
1:A:731:ILE:HG13	1:A:731:ILE:H	1.69	0.41
1:A:719:HIS:CD2	1:A:852:ARG:HD2	2.55	0.41
1:A:949:PRO:HB3	1:B:913:LEU:CD1	2.50	0.41
1:A:970:HIS:HE1	1:A:974:LYS:NZ	2.18	0.41
1:B:862:MET:SD	1:B:964:ILE:HG23	2.60	0.41
1:B:975:ARG:HG2	1:B:976:ILE:HD13	2.02	0.41
1:C:580:GLN:HG3	1:C:615:ASN:O	2.20	0.41
1:C:684:THR:O	1:C:687:ASN:HB3	2.20	0.41
1:C:629:TYR:N	1:C:697:LEU:HD11	2.23	0.41
1:D:684:THR:O	1:D:687:ASN:HB3	2.20	0.41
1:A:512:HIS:CD2	1:A:512:HIS:C	2.93	0.41
1:A:736:LEU:HD13	1:A:773:CYS:SG	2.60	0.41
1:A:874:THR:HA	1:A:877:PHE:CE2	2.55	0.41
1:A:948:VAL:HB	1:A:949:PRO:HD3	2.02	0.41
1:B:736:LEU:HD13	1:B:773:CYS:SG	2.60	0.41
1:B:949:PRO:HB3	1:C:913:LEU:CD1	2.50	0.41
1:A:891:LEU:O	1:A:892:LEU:HD13	2.20	0.41
1:A:919:ARG:O	1:A:919:ARG:HG3	2.20	0.41
1:C:597:LEU:HD13	1:C:601:ARG:HH12	1.84	0.41
1:D:719:HIS:CD2	1:D:852:ARG:HD2	2.55	0.41
1:A:635:LYS:HB2	1:A:635:LYS:HE2	1.81	0.41
1:B:895:GLN:NE2	1:B:896:ASP:O	2.52	0.41
1:A:923:LEU:CD2	1:B:897:PRO:HG3	2.49	0.41
1:B:919:ARG:HG3	1:B:919:ARG:O	2.20	0.41
1:C:891:LEU:O	1:C:892:LEU:HD13	2.20	0.41
1:D:862:MET:SD	1:D:964:ILE:HG23	2.60	0.41
1:A:580:GLN:HG3	1:A:615:ASN:O	2.20	0.41
1:B:554:PHE:O	1:B:557:ARG:N	2.54	0.41
1:B:584:LEU:HD22	1:B:619:ASN:OD1	2.20	0.41
1:B:595:VAL:O	1:B:598:THR:HG22	2.21	0.41
1:B:580:GLN:HG3	1:B:615:ASN:O	2.20	0.41
1:B:638:LEU:HD21	1:B:653:ASP:O	2.21	0.41
1:C:919:ARG:HG3	1:C:919:ARG:O	2.20	0.41
1:C:975:ARG:HG2	1:C:976:ILE:HD13	2.02	0.41
1:D:997:LYS:CB	1:D:998:VAL:HA	2.46	0.41
1:A:862:MET:SD	1:A:964:ILE:HG23	2.60	0.41
1:B:1075:ILE:HA	1:B:1076:SER:HA	1.94	0.41

Continued on next page...

Continued from previous page...

Atom-1	Atom-2	Interatomic distance (Å)	Clash overlap (Å)
1:B:512:HIS:CD2	1:B:512:HIS:C	2.93	0.41
1:B:970:HIS:HE1	1:B:974:LYS:NZ	2.18	0.41
1:D:1050:ARG:NH1	1:C:1048:LYS:HZ1	2.18	0.41
1:C:874:THR:HA	1:C:877:PHE:CE2	2.55	0.41
1:D:635:LYS:HE2	1:D:635:LYS:HB2	1.81	0.41
1:D:835:GLY:O	1:D:839:VAL:HG23	2.21	0.41
1:A:835:GLY:O	1:A:839:VAL:HG23	2.21	0.41
1:D:859:PHE:CE2	1:C:876:VAL:HG11	2.55	0.41
1:D:719:HIS:NE2	1:D:852:ARG:HD2	2.35	0.41
1:A:468:ASP:N	1:A:469:ILE:HA	2.23	0.41
1:B:835:GLY:O	1:B:839:VAL:HG23	2.21	0.41
1:B:719:HIS:CD2	1:B:852:ARG:HD2	2.55	0.41
1:B:874:THR:HA	1:B:877:PHE:CE2	2.55	0.41
1:C:719:HIS:CD2	1:C:852:ARG:HD2	2.55	0.41
1:A:554:PHE:O	1:A:557:ARG:N	2.54	0.41
1:A:856:CYS:O	1:A:859:PHE:N	2.46	0.41
1:C:635:LYS:HE2	1:C:635:LYS:HB2	1.81	0.41
1:C:638:LEU:HD21	1:C:653:ASP:O	2.21	0.41
1:C:835:GLY:O	1:C:839:VAL:HG23	2.21	0.41
1:C:811:ILE:HD12	1:C:842:TYR:HA	2.02	0.41
1:C:970:HIS:HE1	1:C:974:LYS:NZ	2.18	0.41
1:D:811:ILE:HD12	1:D:842:TYR:HA	2.02	0.41
1:A:638:LEU:HD21	1:A:653:ASP:O	2.21	0.41
1:A:684:THR:O	1:A:687:ASN:HB3	2.20	0.41
1:C:602:SER:HA	1:C:603:LYS:HA	1.48	0.41
1:D:919:ARG:HG3	1:D:919:ARG:O	2.20	0.41
1:A:975:ARG:HG2	1:A:976:ILE:HD13	2.02	0.41
1:B:684:THR:O	1:B:687:ASN:HB3	2.20	0.41
1:B:891:LEU:O	1:B:892:LEU:HD13	2.20	0.41
1:C:616:SER:HA	1:C:617:PRO:HD3	1.90	0.41
1:C:862:MET:SD	1:C:964:ILE:HG23	2.60	0.41
1:C:953:MET:O	1:C:957:ILE:HG13	2.21	0.41
1:D:580:GLN:HG3	1:D:615:ASN:O	2.20	0.41
1:D:876:VAL:HG11	1:A:859:PHE:CE2	2.56	0.40
1:C:595:VAL:O	1:C:598:THR:HG22	2.21	0.40
1:C:818:PHE:HD2	1:C:835:GLY:CA	2.32	0.40
1:C:850:LEU:HA	1:C:850:LEU:HD23	1.79	0.40
1:D:595:VAL:O	1:D:598:THR:HG22	2.21	0.40
1:D:626:MET:O	1:D:627:ILE:HG13	2.21	0.40
1:D:990:LEU:HD21	1:D:994:PHE:HD2	1.86	0.40
1:A:990:LEU:HD21	1:A:994:PHE:HD2	1.86	0.40

Continued on next page...

Continued from previous page...

Atom-1	Atom-2	Interatomic distance (Å)	Clash overlap (Å)
1:C:851:GLN:HA	1:C:860:ILE:HD13	2.04	0.40
1:D:554:PHE:O	1:D:557:ARG:N	2.54	0.40
1:D:891:LEU:O	1:D:892:LEU:HD13	2.20	0.40
1:D:913:LEU:CD1	1:C:949:PRO:HB3	2.51	0.40
1:D:970:HIS:HE1	1:D:974:LYS:NZ	2.18	0.40
1:A:595:VAL:O	1:A:598:THR:HG22	2.21	0.40
1:A:626:MET:O	1:A:627:ILE:HG13	2.21	0.40
1:B:603:LYS:HE2	1:B:603:LYS:HB2	1.77	0.40
1:D:603:LYS:HE2	1:D:603:LYS:HB2	1.77	0.40
1:B:942:VAL:HG23	1:C:909:PHE:CE2	2.57	0.40
1:D:814:THR:HG21	1:D:838:ALA:HA	2.03	0.40
1:D:975:ARG:HG2	1:D:976:ILE:HD13	2.02	0.40
1:B:953:MET:O	1:B:957:ILE:HG13	2.21	0.40
1:B:990:LEU:HD21	1:B:994:PHE:HD2	1.86	0.40
1:D:1050:ARG:HH22	1:C:1048:LYS:HZ3	1.69	0.40
1:C:990:LEU:HD21	1:C:994:PHE:HD2	1.86	0.40
1:D:1067:LEU:O	1:D:1067:LEU:HD13	2.22	0.40
1:D:638:LEU:HD21	1:D:653:ASP:O	2.21	0.40
1:D:851:GLN:HA	1:D:860:ILE:HD13	2.04	0.40
1:D:953:MET:O	1:D:957:ILE:HG13	2.21	0.40

There are no symmetry-related clashes.

5.3 Torsion angles [i](#)

5.3.1 Protein backbone [i](#)

In the following table, the Percentiles column shows the percent Ramachandran outliers of the chain as a percentile score with respect to all PDB entries followed by that with respect to all EM entries.

The Analysed column shows the number of residues for which the backbone conformation was analysed, and the total number of residues.

Mol	Chain	Analysed	Favoured	Allowed	Outliers	Percentiles	
1	A	550/1528 (36%)	485 (88%)	56 (10%)	9 (2%)	9	45
1	B	550/1528 (36%)	485 (88%)	56 (10%)	9 (2%)	9	45
1	C	550/1528 (36%)	485 (88%)	56 (10%)	9 (2%)	9	45
1	D	550/1528 (36%)	485 (88%)	56 (10%)	9 (2%)	9	45
All	All	2200/6112 (36%)	1940 (88%)	224 (10%)	36 (2%)	13	45

All (36) Ramachandran outliers are listed below:

Mol	Chain	Res	Type
1	D	580	GLN
1	D	639	ASP
1	A	580	GLN
1	A	639	ASP
1	B	580	GLN
1	B	639	ASP
1	C	580	GLN
1	C	639	ASP
1	D	746	PHE
1	D	853	PHE
1	D	1075	ILE
1	A	746	PHE
1	A	853	PHE
1	A	1075	ILE
1	B	746	PHE
1	B	853	PHE
1	B	1075	ILE
1	C	746	PHE
1	C	853	PHE
1	C	1075	ILE
1	D	828	ALA
1	D	948	VAL
1	A	828	ALA
1	A	948	VAL
1	B	828	ALA
1	B	948	VAL
1	C	828	ALA
1	C	948	VAL
1	D	684	THR
1	A	684	THR
1	B	684	THR
1	C	684	THR
1	D	821	PRO
1	A	821	PRO
1	B	821	PRO
1	C	821	PRO

5.3.2 Protein sidechains [i](#)

In the following table, the Percentiles column shows the percent sidechain outliers of the chain as a percentile score with respect to all PDB entries followed by that with respect to all EM entries.

The Analysed column shows the number of residues for which the sidechain conformation was analysed, and the total number of residues.

Mol	Chain	Analysed	Rotameric	Outliers	Percentiles	
1	A	415/1325 (31%)	405 (98%)	10 (2%)	49	69
1	B	415/1325 (31%)	405 (98%)	10 (2%)	49	69
1	C	415/1325 (31%)	405 (98%)	10 (2%)	49	69
1	D	415/1325 (31%)	405 (98%)	10 (2%)	49	69
All	All	1660/5300 (31%)	1620 (98%)	40 (2%)	51	69

All (40) residues with a non-rotameric sidechain are listed below:

Mol	Chain	Res	Type
1	D	480	LEU
1	D	536	THR
1	D	620	LYS
1	D	690	VAL
1	D	706	TYR
1	D	768	TYR
1	D	785	TYR
1	D	829	HIS
1	D	832	TRP
1	D	1042	MET
1	A	480	LEU
1	A	536	THR
1	A	620	LYS
1	A	690	VAL
1	A	706	TYR
1	A	768	TYR
1	A	785	TYR
1	A	829	HIS
1	A	832	TRP
1	A	1042	MET
1	B	480	LEU
1	B	536	THR
1	B	620	LYS
1	B	690	VAL
1	B	706	TYR
1	B	768	TYR
1	B	785	TYR
1	B	829	HIS
1	B	832	TRP
1	B	1042	MET

Continued on next page...

Continued from previous page...

Mol	Chain	Res	Type
1	C	480	LEU
1	C	536	THR
1	C	620	LYS
1	C	690	VAL
1	C	706	TYR
1	C	768	TYR
1	C	785	TYR
1	C	829	HIS
1	C	832	TRP
1	C	1042	MET

Sometimes sidechains can be flipped to improve hydrogen bonding and reduce clashes. All (7) such sidechains are listed below:

Mol	Chain	Res	Type
1	D	954	ASN
1	D	1047	GLN
1	D	1061	GLN
1	A	1047	GLN
1	B	1047	GLN
1	B	1061	GLN
1	C	1047	GLN

5.3.3 RNA [i](#)

There are no RNA molecules in this entry.

5.4 Non-standard residues in protein, DNA, RNA chains [i](#)

There are no non-standard protein/DNA/RNA residues in this entry.

5.5 Carbohydrates [i](#)

There are no monosaccharides in this entry.

5.6 Ligand geometry [i](#)

There are no ligands in this entry.

5.7 Other polymers

There are no such residues in this entry.

5.8 Polymer linkage issues

There are no chain breaks in this entry.

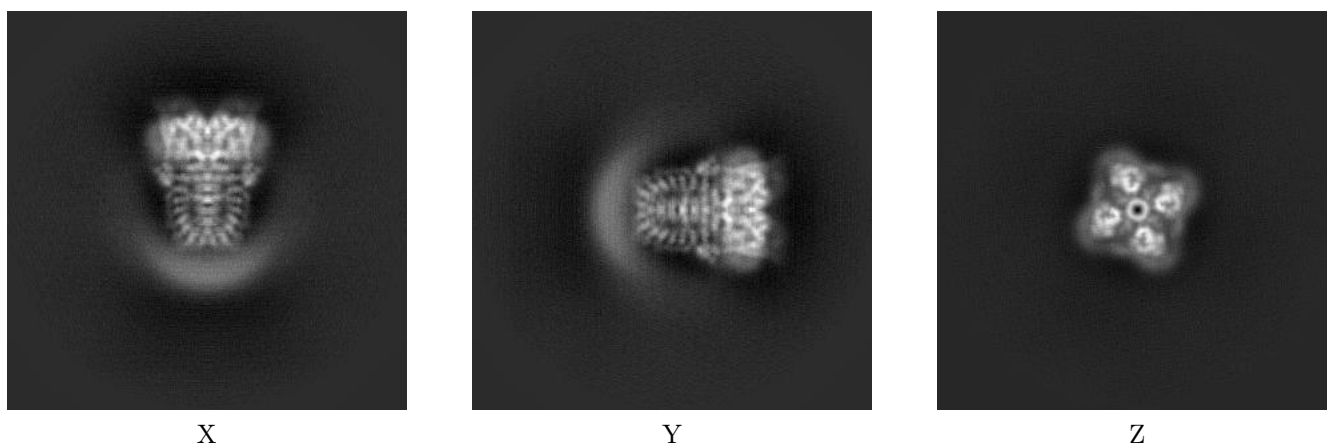
6 Map visualisation [i](#)

This section contains visualisations of the EMDB entry EMD-6267. These allow visual inspection of the internal detail of the map and identification of artifacts.

No raw map or half-maps were deposited for this entry and therefore no images, graphs, etc. pertaining to the raw map can be shown.

6.1 Orthogonal projections [i](#)

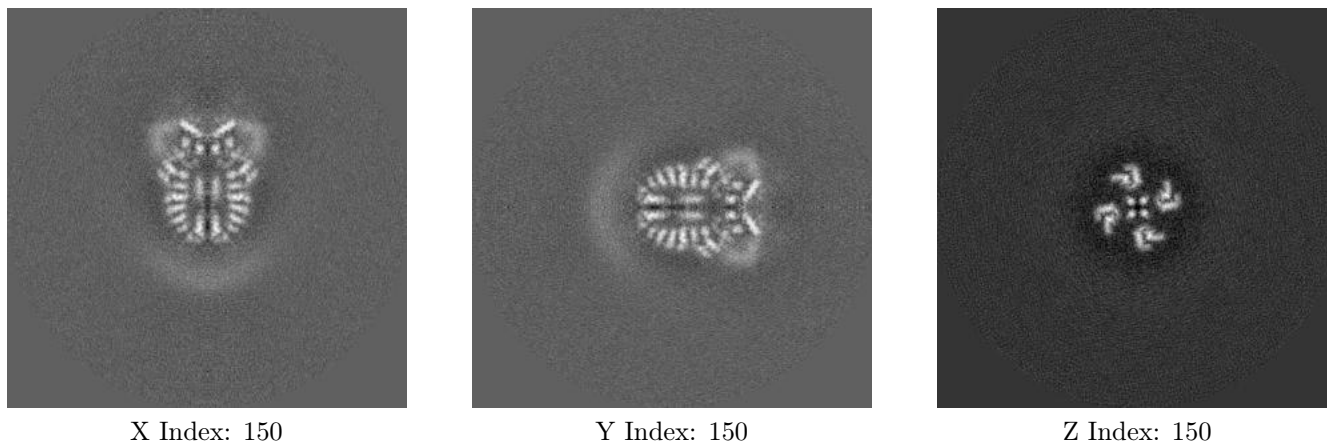
6.1.1 Primary map



The images above show the map projected in three orthogonal directions.

6.2 Central slices [i](#)

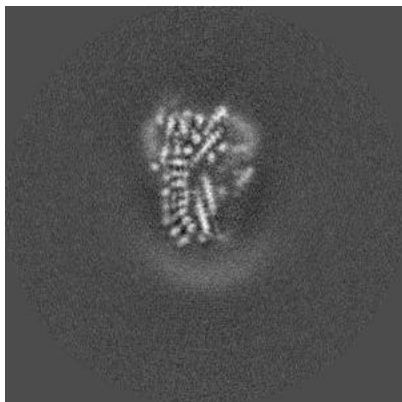
6.2.1 Primary map



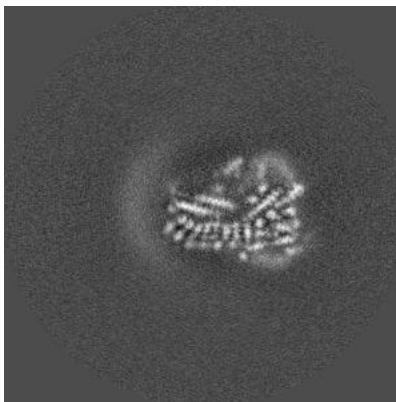
The images above show central slices of the map in three orthogonal directions.

6.3 Largest variance slices [i](#)

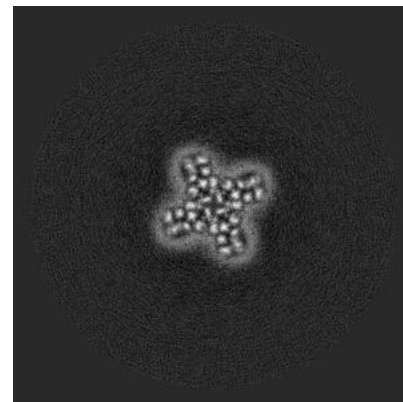
6.3.1 Primary map



X Index: 156



Y Index: 144

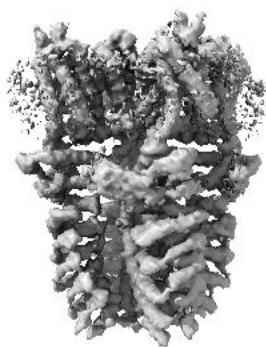


Z Index: 212

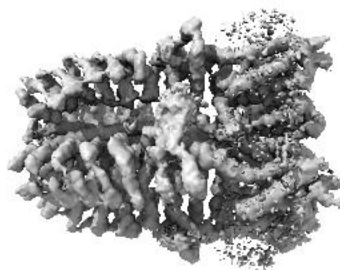
The images above show the largest variance slices of the map in three orthogonal directions.

6.4 Orthogonal surface views [i](#)

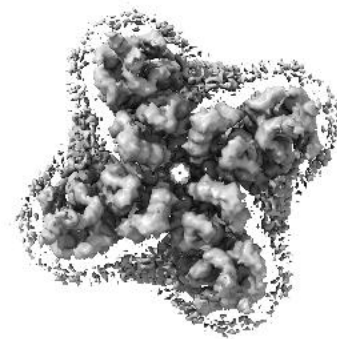
6.4.1 Primary map



X



Y



Z

The images above show the 3D surface view of the map at the recommended contour level 8.0. These images, in conjunction with the slice images, may facilitate assessment of whether an appropriate contour level has been provided.

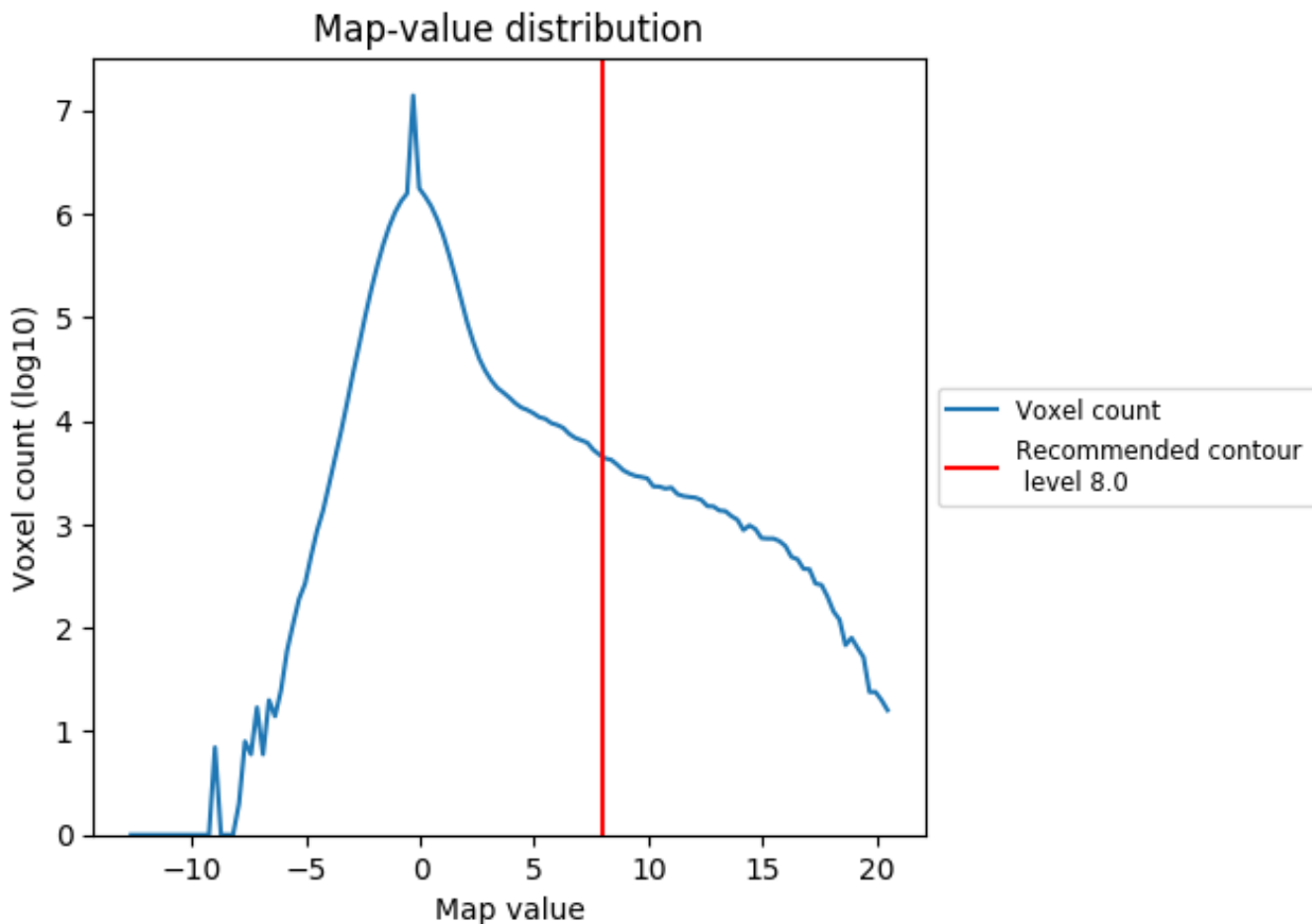
6.5 Mask visualisation

This section was not generated. No masks/segmentation were deposited.

7 Map analysis [i](#)

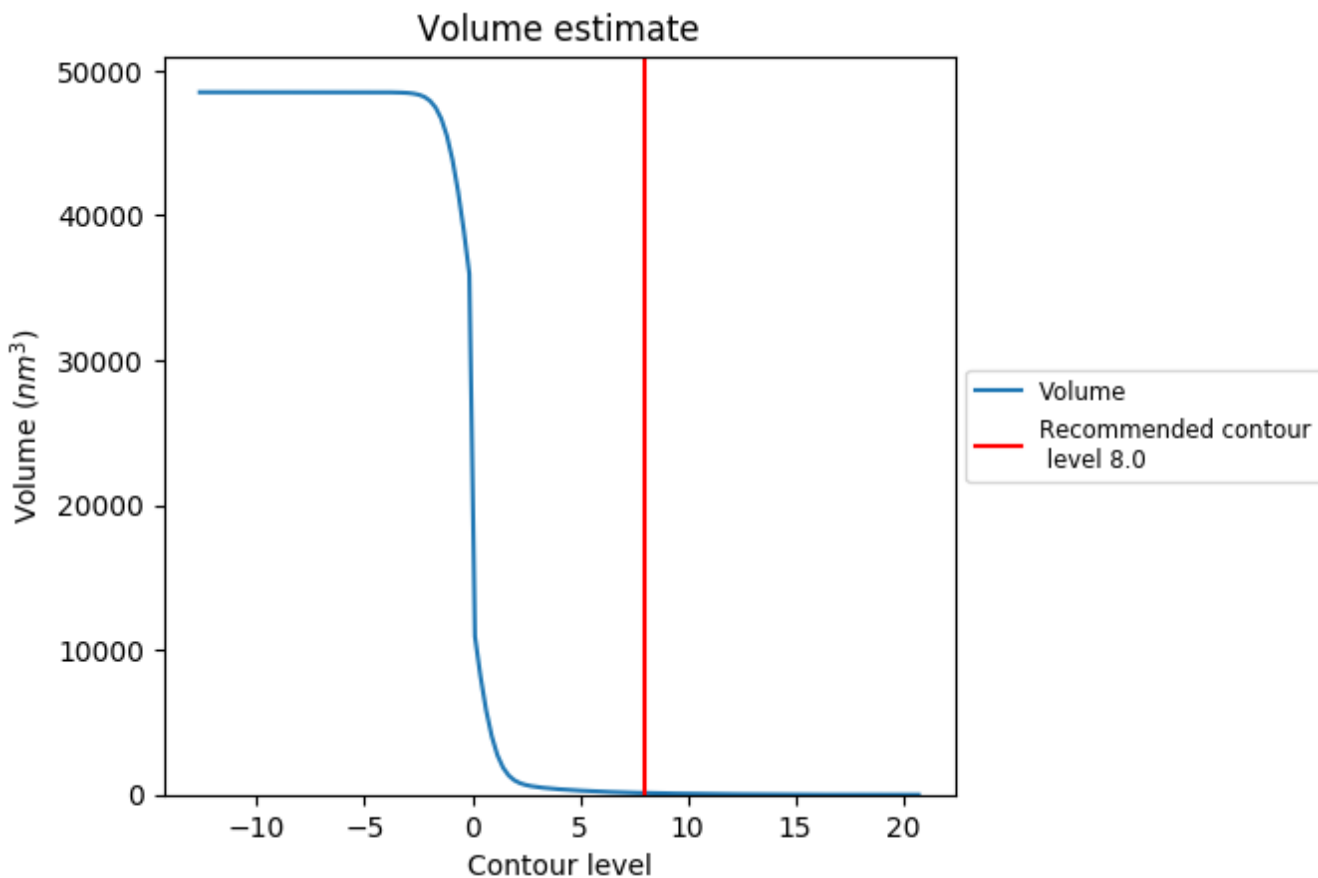
This section contains the results of statistical analysis of the map.

7.1 Map-value distribution [i](#)



The map-value distribution is plotted in 128 intervals along the x-axis. The y-axis is logarithmic. A spike in this graph at zero usually indicates that the volume has been masked.

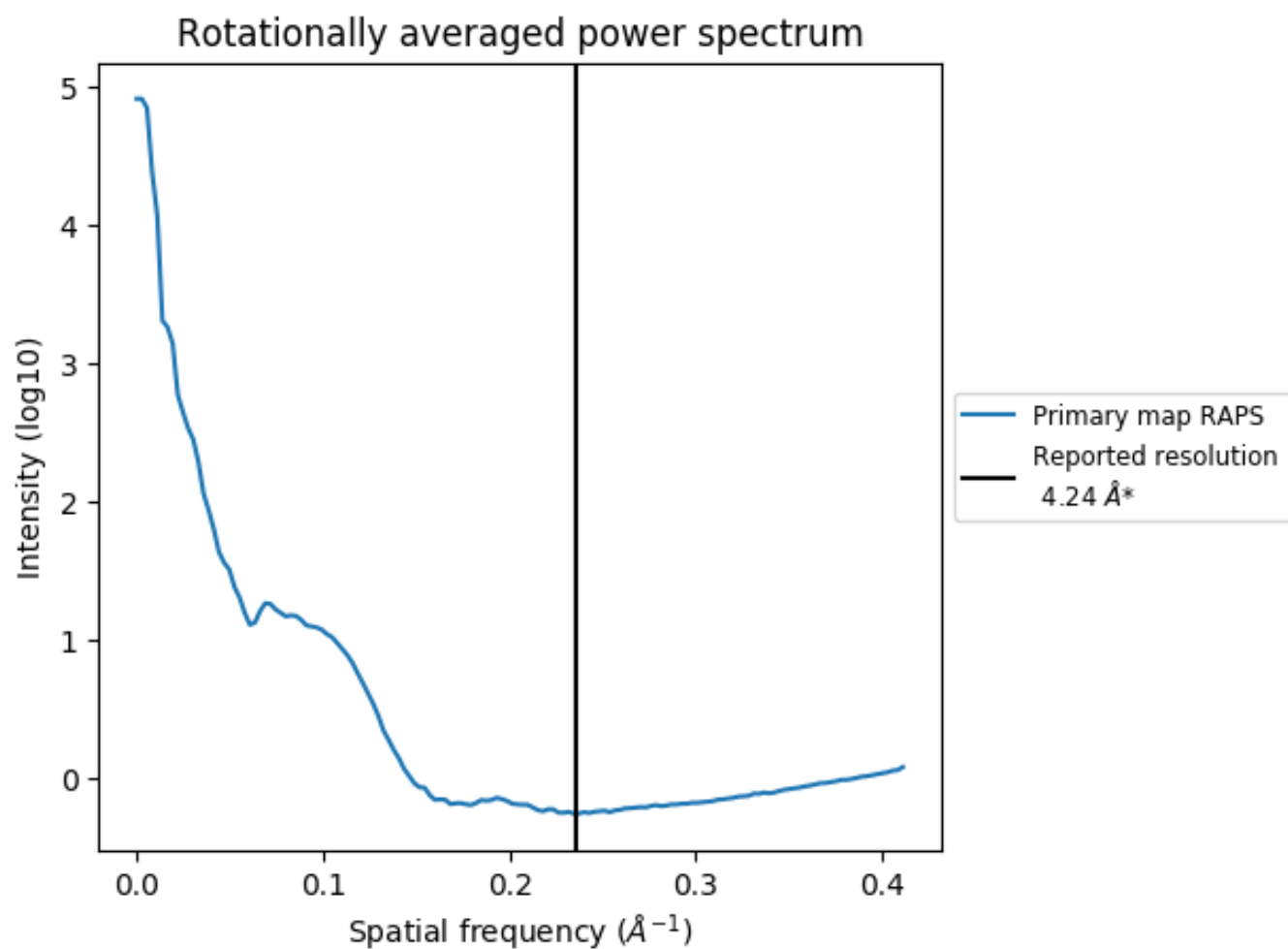
7.2 Volume estimate [i](#)



The volume at the recommended contour level is 117 nm^3 ; this corresponds to an approximate mass of 105 kDa.

The volume estimate graph shows how the enclosed volume varies with the contour level. The recommended contour level is shown as a vertical line and the intersection between the line and the curve gives the volume of the enclosed surface at the given level.

7.3 Rotationally averaged power spectrum i



*Reported resolution corresponds to spatial frequency of 0.236 Å⁻¹

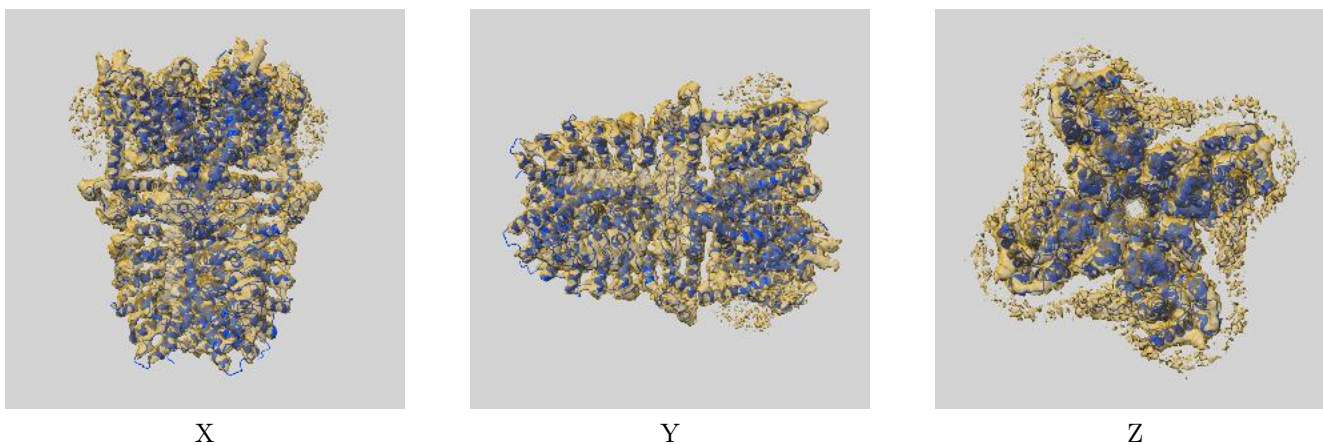
8 Fourier-Shell correlation

This section was not generated. No FSC curve or half-maps provided.

9 Map-model fit [i](#)

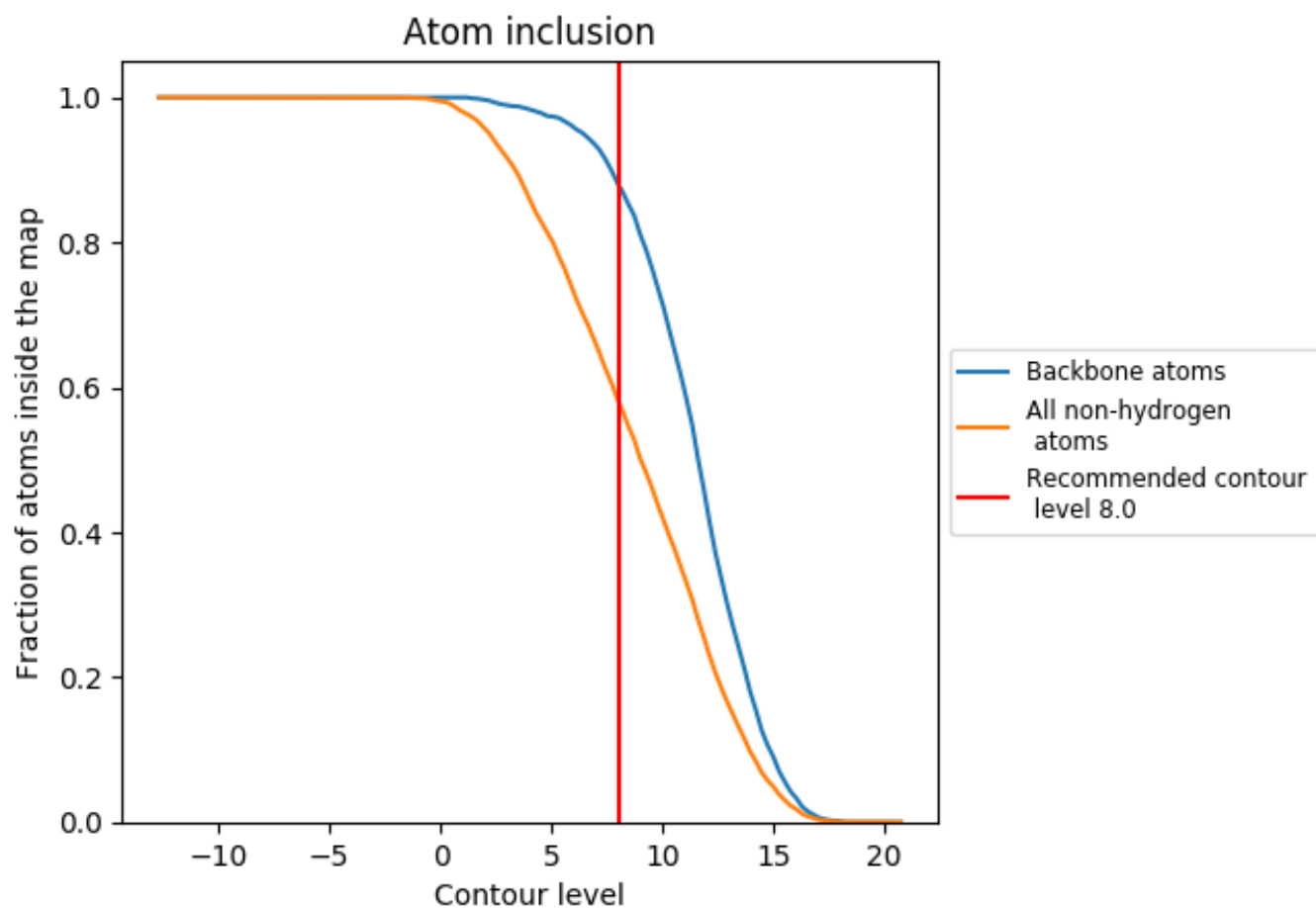
This section contains information regarding the fit between EMDB map EMD-6267 and PDB model 3J9P. Per-residue inclusion information can be found in section 3 on page 8.

9.1 Map-model overlay [i](#)



The images above show the 3D surface view of the map at the recommended contour level 8.0 at 50% transparency in yellow overlaid with a ribbon representation of the model coloured in blue. These images allow for the visual assessment of the quality of fit between the atomic model and the map.

9.2 Atom inclusion [i](#)



At the recommended contour level, 88% of all backbone atoms, 58% of all non-hydrogen atoms, are inside the map.