



Full wwPDB X-ray Structure Validation Report ⓘ

Mar 10, 2018 – 12:25 am GMT

PDB ID : 5JAE
Title : LeuT in the outward-oriented, Na⁺-free return state, P21 form at pH 6.5
Authors : Malinauskaite, L.; Sahin, C.; Said, S.; Grouleff, J.; Shahsavari, A.; Bjerregaard, H.; Noer, P.; Severinsen, K.; Boesen, T.; Schiott, B.; Sinning, S.; Nissen, P.
Deposited on : 2016-04-12
Resolution : 2.50 Å (reported)

This is a Full wwPDB X-ray Structure Validation Report for a publicly released PDB entry.

We welcome your comments at validation@mail.wwpdb.org

A user guide is available at

<https://www.wwpdb.org/validation/2017/XrayValidationReportHelp>

with specific help available everywhere you see the ⓘ symbol.

The following versions of software and data (see [references ⓘ](#)) were used in the production of this report:

MolProbity : 4.02b-467
Mogul : 1.7.3 (157068), CSD as539be (2018)
Xtriage (Phenix) : 1.13
EDS : trunk30967
Percentile statistics : 20171227.v01 (using entries in the PDB archive December 27th 2017)
Refmac : 5.8.0158
CCP4 : 7.0 (Gargrove)
Ideal geometry (proteins) : Engh & Huber (2001)
Ideal geometry (DNA, RNA) : Parkinson et al. (1996)
Validation Pipeline (wwPDB-VP) : trunk30967

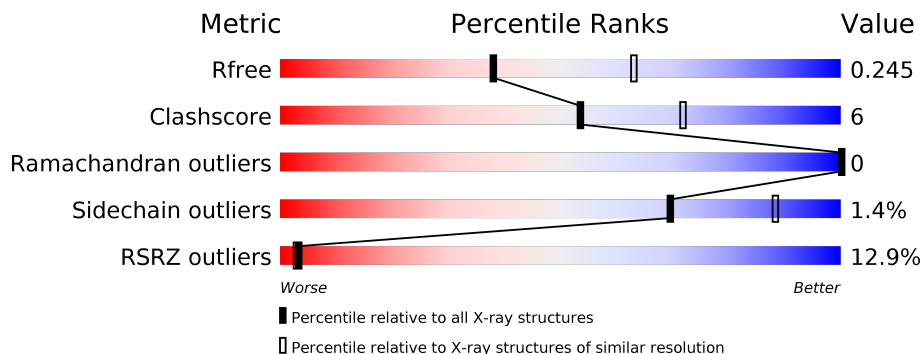
1 Overall quality at a glance

The following experimental techniques were used to determine the structure:

X-RAY DIFFRACTION

The reported resolution of this entry is 2.50 Å.

Percentile scores (ranging between 0-100) for global validation metrics of the entry are shown in the following graphic. The table shows the number of entries on which the scores are based.



Metric	Whole archive (#Entries)	Similar resolution (#Entries, resolution range(Å))
R_{free}	111664	4155 (2.50-2.50)
Clashscore	122126	4827 (2.50-2.50)
Ramachandran outliers	120053	4735 (2.50-2.50)
Sidechain outliers	120020	4737 (2.50-2.50)
RSRZ outliers	108989	4058 (2.50-2.50)

The table below summarises the geometric issues observed across the polymeric chains and their fit to the electron density. The red, orange, yellow and green segments on the lower bar indicate the fraction of residues that contain outliers for ≥ 3 , 2, 1 and 0 types of geometric quality criteria. A grey segment represents the fraction of residues that are not modelled. The numeric value for each fraction is indicated below the corresponding segment, with a dot representing fractions $\leq 5\%$. The upper red bar (where present) indicates the fraction of residues that have poor fit to the electron density. The numeric value is given above the bar.

Mol	Chain	Length	Quality of chain
1	A	519	
1	B	519	

The following table lists non-polymeric compounds, carbohydrate monomers and non-standard residues in protein, DNA, RNA chains that are outliers for geometric or electron-density-fit criteria:

Mol	Type	Chain	Res	Chirality	Geometry	Clashes	Electron density
2	BOG	B	604	-	-	-	X
2	BOG	B	607	-	-	-	X

2 Entry composition

There are 3 unique types of molecules in this entry. The entry contains 8224 atoms, of which 0 are hydrogens and 0 are deuteriums.

In the tables below, the ZeroOcc column contains the number of atoms modelled with zero occupancy, the AltConf column contains the number of residues with at least one atom in alternate conformation and the Trace column contains the number of residues modelled with at most 2 atoms.

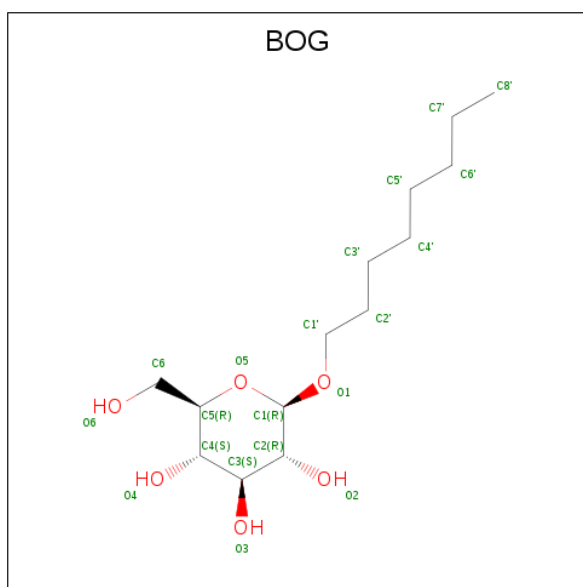
- Molecule 1 is a protein called Transporter.

Mol	Chain	Residues	Atoms					ZeroOcc	AltConf	Trace
			Total	C	N	O	S			
1	A	507	4002	2714	626	650	12	0	0	0
1	B	503	3969	2692	625	641	11	0	0	0

There are 12 discrepancies between the modelled and reference sequences:

Chain	Residue	Modelled	Actual	Comment	Reference
A	514	GLY	-	expression tag	UNP O67854
A	515	THR	-	expression tag	UNP O67854
A	516	LEU	-	expression tag	UNP O67854
A	517	VAL	-	expression tag	UNP O67854
A	518	PRO	-	expression tag	UNP O67854
A	519	ARG	-	expression tag	UNP O67854
B	514	GLY	-	expression tag	UNP O67854
B	515	THR	-	expression tag	UNP O67854
B	516	LEU	-	expression tag	UNP O67854
B	517	VAL	-	expression tag	UNP O67854
B	518	PRO	-	expression tag	UNP O67854
B	519	ARG	-	expression tag	UNP O67854

- Molecule 2 is B-OCTYLGLUCOSIDE (three-letter code: BOG) (formula: C₁₄H₂₈O₆).



Mol	Chain	Residues	Atoms	ZeroOcc	AltConf
2	A	1	Total C O 20 14 6	0	0
2	A	1	Total C O 20 14 6	0	0
2	A	1	Total C O 20 14 6	0	0
2	A	1	Total C O 20 14 6	0	0
2	B	1	Total C O 20 14 6	0	0
2	B	1	Total C O 20 14 6	0	0
2	B	1	Total C O 20 14 6	0	0
2	B	1	Total C O 20 14 6	0	0
2	B	1	Total C O 9 8 1	0	0
2	B	1	Total C O 20 14 6	0	0
2	B	1	Total C O 20 14 6	0	0

- Molecule 3 is water.

Mol	Chain	Residues	Atoms	ZeroOcc	AltConf
3	A	23	Total O 23 23	0	0

Continued on next page...

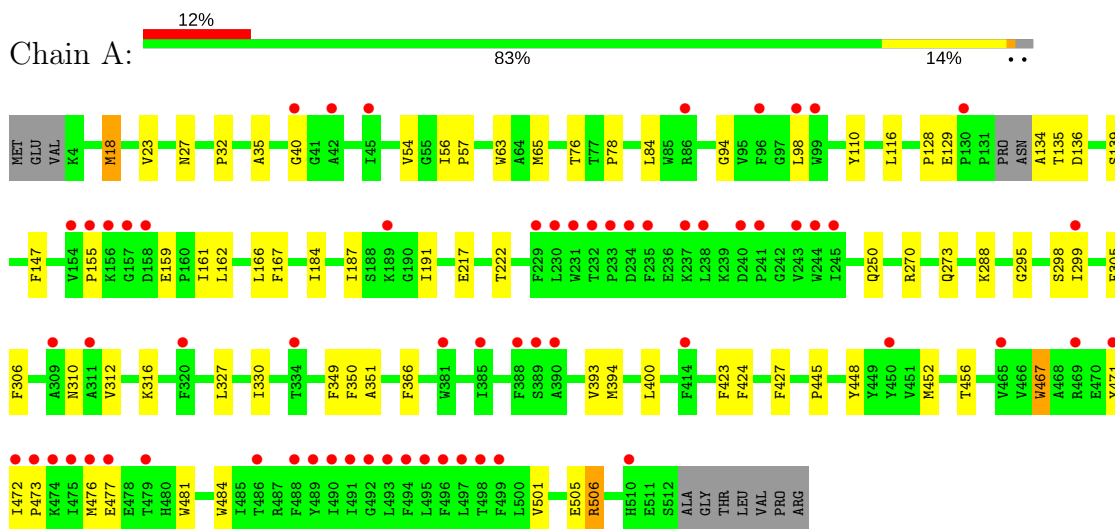
Continued from previous page...

Mol	Chain	Residues	Atoms		ZeroOcc	AltConf
3	B	21	Total	O	0	0
			21	21		

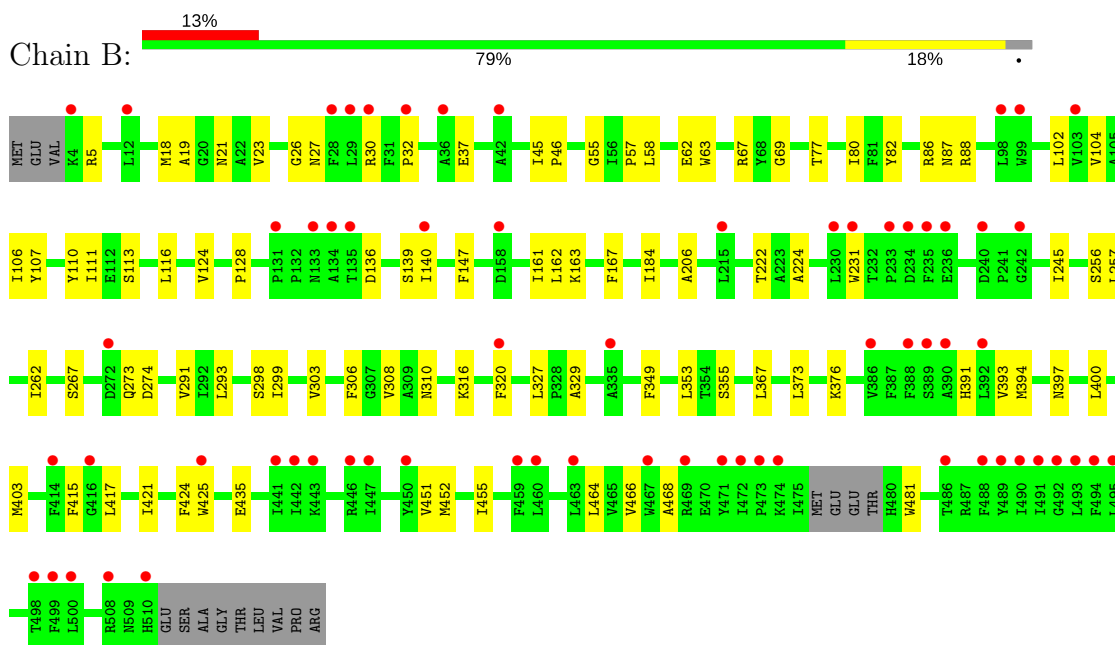
3 Residue-property plots [i](#)

These plots are drawn for all protein, RNA and DNA chains in the entry. The first graphic for a chain summarises the proportions of the various outlier classes displayed in the second graphic. The second graphic shows the sequence view annotated by issues in geometry and electron density. Residues are color-coded according to the number of geometric quality criteria for which they contain at least one outlier: green = 0, yellow = 1, orange = 2 and red = 3 or more. A red dot above a residue indicates a poor fit to the electron density ($RSRZ > 2$). Stretches of 2 or more consecutive residues without any outlier are shown as a green connector. Residues present in the sample, but not in the model, are shown in grey.

- Molecule 1: Transporter



- Molecule 1: Transporter



4 Data and refinement statistics

Property	Value	Source
Space group	P 1 21 1	Depositor
Cell constants a, b, c, α , β , γ	81.57Å 92.08Å 92.47Å 90.00° 95.18° 90.00°	Depositor
Resolution (Å)	46.05 – 2.50 49.30 – 2.50	Depositor EDS
% Data completeness (in resolution range)	99.0 (46.05-2.50) 99.0 (49.30-2.50)	Depositor EDS
R_{merge}	(Not available)	Depositor
R_{sym}	(Not available)	Depositor
$\langle I/\sigma(I) \rangle$ ¹	1.28 (at 2.51Å)	Xtrriage
Refinement program	PHENIX (dev_2283: ???)	Depositor
R, R_{free}	0.223 , 0.245 0.225 , 0.245	Depositor DCC
R_{free} test set	1001 reflections (2.14%)	wwPDB-VP
Wilson B-factor (Å ²)	65.1	Xtrriage
Anisotropy	0.395	Xtrriage
Bulk solvent k_{sol} (e/Å ³), B_{sol} (Å ²)	0.30 , 72.3	EDS
L-test for twinning ²	$\langle L \rangle = 0.49$, $\langle L^2 \rangle = 0.32$	Xtrriage
Estimated twinning fraction	No twinning to report.	Xtrriage
F_o, F_c correlation	0.95	EDS
Total number of atoms	8224	wwPDB-VP
Average B, all atoms (Å ²)	96.0	wwPDB-VP

Xtrriage's analysis on translational NCS is as follows: *The largest off-origin peak in the Patterson function is 16.60% of the height of the origin peak. No significant pseudotranslation is detected.*

¹Intensities estimated from amplitudes.

²Theoretical values of $\langle |L| \rangle$, $\langle L^2 \rangle$ for acentric reflections are 0.5, 0.333 respectively for untwinned datasets, and 0.375, 0.2 for perfectly twinned datasets.

5 Model quality [i](#)

5.1 Standard geometry [i](#)

Bond lengths and bond angles in the following residue types are not validated in this section: BOG

The Z score for a bond length (or angle) is the number of standard deviations the observed value is removed from the expected value. A bond length (or angle) with $|Z| > 5$ is considered an outlier worth inspection. RMSZ is the root-mean-square of all Z scores of the bond lengths (or angles).

Mol	Chain	Bond lengths		Bond angles	
		RMSZ	# Z >5	RMSZ	# Z >5
1	A	0.30	0/4128	0.43	0/5627
1	B	0.30	0/4096	0.43	0/5586
All	All	0.30	0/8224	0.43	0/11213

There are no bond length outliers.

There are no bond angle outliers.

There are no chirality outliers.

There are no planarity outliers.

5.2 Too-close contacts [i](#)

In the following table, the Non-H and H(model) columns list the number of non-hydrogen atoms and hydrogen atoms in the chain respectively. The H(added) column lists the number of hydrogen atoms added and optimized by MolProbity. The Clashes column lists the number of clashes within the asymmetric unit, whereas Symm-Clashes lists symmetry related clashes.

Mol	Chain	Non-H	H(model)	H(added)	Clashes	Symm-Clashes
1	A	4002	0	4069	46	0
1	B	3969	0	4027	52	0
2	A	80	0	112	4	0
2	B	129	0	184	4	0
3	A	23	0	0	1	0
3	B	21	0	0	1	0
All	All	8224	0	8392	96	0

The all-atom clashscore is defined as the number of clashes found per 1000 atoms (including hydrogen atoms). The all-atom clashscore for this structure is 6.

All (96) close contacts within the same asymmetric unit are listed below, sorted by their clash

magnitude.

Atom-1	Atom-2	Interatomic distance (Å)	Clash overlap (Å)
1:A:76:THR:HG22	1:A:78:PRO:HD2	1.46	0.95
1:B:77:THR:HG21	1:B:415:PHE:HZ	1.56	0.70
2:B:603:BOG:H1'1	2:B:607:BOG:H5	1.73	0.69
1:A:166:LEU:HD13	2:A:601:BOG:H61	1.75	0.69
1:A:18:MET:HG2	1:A:63:TRP:CZ2	2.28	0.68
1:B:32:PRO:HB3	1:B:299:ILE:HG12	1.76	0.66
1:A:477:GLU:O	2:A:602:BOG:O4	2.16	0.63
1:A:167:PHE:HD1	2:A:604:BOG:H2'1	1.63	0.63
1:A:136:ASP:HB3	1:A:139:SER:HB3	1.80	0.62
1:B:140:ILE:HG22	1:B:329:ALA:HB1	1.81	0.62
1:A:250:GLN:NE2	3:A:701:HOH:O	2.32	0.61
1:A:35:ALA:HB1	1:A:40:GLY:HA2	1.84	0.59
1:B:113:SER:OG	3:B:701:HOH:O	2.17	0.59
1:A:472:ILE:HB	1:A:473:PRO:HD3	1.85	0.58
1:A:161:ILE:HD11	1:B:481:TRP:CE3	2.39	0.57
1:A:270:ARG:HB2	1:A:273:GLN:HG3	1.87	0.56
1:B:55:GLY:HA2	1:B:257:LEU:HD11	1.86	0.56
1:A:481:TRP:CE3	1:B:161:ILE:HD11	2.40	0.56
1:A:128:PRO:HG2	1:A:147:PHE:HB2	1.88	0.56
1:B:231:TRP:HH2	1:B:291:VAL:HG13	1.72	0.55
1:B:303:VAL:HG13	1:B:308:VAL:HA	1.87	0.55
1:A:155:PRO:HD3	1:A:162:LEU:HD23	1.90	0.53
1:A:110:TYR:CZ	1:A:394:MET:HG2	2.44	0.52
1:A:393:VAL:HG13	1:A:400:LEU:HB2	1.91	0.52
1:B:222:THR:HG22	1:B:224:ALA:H	1.75	0.52
1:B:184:ILE:HD11	1:B:376:LYS:HA	1.92	0.52
1:B:111:ILE:HD13	1:B:320:PHE:HZ	1.74	0.51
1:A:32:PRO:HG3	1:A:295:GLY:HA2	1.91	0.51
1:A:217:GLU:HG3	1:A:222:THR:HG22	1.92	0.51
1:A:32:PRO:HB3	1:A:299:ILE:HG12	1.92	0.50
1:B:26:GLY:HA3	1:B:30:ARG:HG3	1.94	0.50
1:B:45:ILE:HB	1:B:46:PRO:HD3	1.94	0.50
1:B:5:ARG:NH1	1:B:267:SER:OG	2.45	0.50
1:B:298:SER:HB3	1:B:327:LEU:HD11	1.92	0.50
1:B:102:LEU:O	1:B:106:ILE:HG13	2.11	0.49
1:B:451:VAL:HA	1:B:455:ILE:HB	1.95	0.49
1:A:306:PHE:O	1:A:310:ASN:HB2	2.13	0.49
1:B:167:PHE:HD1	2:B:603:BOG:H2'2	1.76	0.49
1:B:67:ARG:NH2	1:B:435:GLU:O	2.46	0.49
1:A:159:GLU:HG3	1:A:161:ILE:H	1.78	0.49
1:B:87:ASN:OD1	1:B:88:ARG:N	2.47	0.48

Continued on next page...

Continued from previous page...

Atom-1	Atom-2	Interatomic distance (Å)	Clash overlap (Å)
1:B:391:HIS:HA	1:B:394:MET:HE2	1.96	0.48
1:A:57:PRO:HB3	1:A:452:MET:HG2	1.95	0.47
1:B:393:VAL:HG13	1:B:400:LEU:HB2	1.95	0.47
1:B:18:MET:HG3	1:B:63:TRP:CZ2	2.49	0.47
1:A:98:LEU:HD11	1:A:366:PHE:CG	2.49	0.47
1:A:78:PRO:HD3	1:A:94:GLY:O	2.15	0.47
1:B:124:VAL:HG21	2:B:607:BOG:H2'1	1.96	0.47
1:A:18:MET:HG2	1:A:63:TRP:HZ2	1.76	0.47
1:A:305:PHE:CD1	1:A:330:ILE:HG23	2.50	0.47
1:B:37:GLU:HG2	1:B:316:LYS:HG3	1.97	0.47
1:A:65:MET:HG2	1:A:84:LEU:HD11	1.95	0.47
1:A:505:GLU:OE2	1:A:506:ARG:NH2	2.48	0.47
1:B:136:ASP:HB2	1:B:139:SER:HB3	1.96	0.46
1:B:104:VAL:HA	1:B:107:TYR:CE1	2.51	0.46
1:B:367:LEU:HB3	1:B:373:LEU:HD22	1.97	0.46
1:A:187:ILE:HD13	1:A:191:ILE:HD12	1.98	0.46
1:B:82:TYR:CZ	1:B:86:ARG:HD3	2.51	0.45
1:B:110:TYR:O	1:B:113:SER:HB3	2.16	0.45
1:B:162:LEU:HG	1:B:397:ASN:HA	1.97	0.45
1:B:67:ARG:NH1	1:B:273:GLN:O	2.50	0.45
1:B:306:PHE:O	1:B:310:ASN:HB2	2.16	0.45
1:A:134:ALA:HA	1:A:135:THR:HA	1.54	0.45
1:A:501:VAL:O	1:A:505:GLU:HG3	2.17	0.45
1:A:23:VAL:HG12	1:A:351:ALA:HB1	2.00	0.44
1:B:106:ILE:HG22	1:B:403:MET:HE1	1.99	0.44
1:B:19:ALA:O	1:B:23:VAL:HG23	2.18	0.44
1:B:58:LEU:HA	1:B:58:LEU:HD12	1.89	0.44
1:A:445:PRO:HD2	1:A:448:TYR:HD2	1.82	0.44
1:B:128:PRO:HD3	1:B:147:PHE:CD1	2.54	0.42
1:B:116:LEU:HB2	1:B:349:PHE:CE1	2.54	0.42
1:A:129:GLU:OE2	1:A:129:GLU:N	2.52	0.42
1:B:57:PRO:HB3	1:B:452:MET:HG2	2.00	0.42
1:B:421:ILE:HD12	1:B:425:TRP:CE3	2.54	0.42
1:A:155:PRO:HB2	1:A:159:GLU:HB3	2.00	0.42
1:A:116:LEU:HB2	1:A:349:PHE:CD1	2.54	0.42
1:A:423:PHE:O	1:A:427:PHE:HB3	2.19	0.42
1:A:54:VAL:HA	1:A:456:THR:HG23	2.01	0.42
1:B:256:SER:O	1:B:256:SER:OG	2.37	0.42
1:B:23:VAL:O	1:B:27:ASN:HB3	2.20	0.42
1:A:56:ILE:HB	1:A:57:PRO:HD3	2.01	0.41
1:B:62:GLU:OE1	1:B:262:ILE:HD12	2.20	0.41

Continued on next page...

Continued from previous page...

Atom-1	Atom-2	Interatomic distance (Å)	Clash overlap (Å)
1:A:484:TRP:CZ2	2:B:602:BOG:H1'2	2.55	0.41
1:B:21:ASN:HA	1:B:355:SER:HA	2.02	0.41
1:B:417:LEU:O	1:B:421:ILE:HG12	2.20	0.41
1:A:288:LYS:HA	1:A:288:LYS:HD3	1.90	0.41
2:A:602:BOG:H2'1	1:B:161:ILE:HG21	2.03	0.41
1:B:69:GLY:HA3	1:B:80:ILE:HG12	2.03	0.41
1:B:464:LEU:O	1:B:468:ALA:N	2.50	0.41
1:A:481:TRP:CZ3	1:B:161:ILE:HD11	2.56	0.41
1:A:467:TRP:O	1:A:471:TYR:HB2	2.21	0.41
1:B:206:ALA:HB1	1:B:293:LEU:HB3	2.02	0.40
1:B:245:ILE:HG13	1:B:466:VAL:HG11	2.02	0.40
1:A:312:VAL:HG12	1:A:316:LYS:HE3	2.04	0.40
1:A:298:SER:HA	1:A:327:LEU:HD11	2.04	0.40
1:A:472:ILE:O	1:A:476:MET:HG2	2.21	0.40

There are no symmetry-related clashes.

5.3 Torsion angles [i](#)

5.3.1 Protein backbone [i](#)

In the following table, the Percentiles column shows the percent Ramachandran outliers of the chain as a percentile score with respect to all X-ray entries followed by that with respect to entries of similar resolution.

The Analysed column shows the number of residues for which the backbone conformation was analysed, and the total number of residues.

Mol	Chain	Analysed	Favoured	Allowed	Outliers	Percentiles	
1	A	503/519 (97%)	488 (97%)	15 (3%)	0	100	100
1	B	499/519 (96%)	492 (99%)	7 (1%)	0	100	100
All	All	1002/1038 (96%)	980 (98%)	22 (2%)	0	100	100

There are no Ramachandran outliers to report.

5.3.2 Protein sidechains [i](#)

In the following table, the Percentiles column shows the percent sidechain outliers of the chain as a percentile score with respect to all X-ray entries followed by that with respect to entries of similar resolution.

The Analysed column shows the number of residues for which the sidechain conformation was analysed, and the total number of residues.

Mol	Chain	Analysed	Rotameric	Outliers	Percentiles	
1	A	402/420 (96%)	395 (98%)	7 (2%)	63	85
1	B	397/420 (94%)	393 (99%)	4 (1%)	78	92
All	All	799/840 (95%)	788 (99%)	11 (1%)	69	88

All (11) residues with a non-rotameric sidechain are listed below:

Mol	Chain	Res	Type
1	A	18	MET
1	A	27	ASN
1	A	184	ILE
1	A	350	PHE
1	A	424	PHE
1	A	467	TRP
1	A	506	ARG
1	B	163	LYS
1	B	274	ASP
1	B	353	LEU
1	B	424	PHE

Some sidechains can be flipped to improve hydrogen bonding and reduce clashes. There are no such sidechains identified.

5.3.3 RNA [i](#)

There are no RNA molecules in this entry.

5.4 Non-standard residues in protein, DNA, RNA chains [i](#)

There are no non-standard protein/DNA/RNA residues in this entry.

5.5 Carbohydrates [i](#)

There are no carbohydrates in this entry.

5.6 Ligand geometry [i](#)

11 ligands are modelled in this entry.

In the following table, the Counts columns list the number of bonds (or angles) for which Mogul statistics could be retrieved, the number of bonds (or angles) that are observed in the model and the number of bonds (or angles) that are defined in the Chemical Component Dictionary. The Link column lists molecule types, if any, to which the group is linked. The Z score for a bond length (or angle) is the number of standard deviations the observed value is removed from the expected value. A bond length (or angle) with $|Z| > 2$ is considered an outlier worth inspection. RMSZ is the root-mean-square of all Z scores of the bond lengths (or angles).

Mol	Type	Chain	Res	Link	Bond lengths			Bond angles		
					Counts	RMSZ	# Z > 2	Counts	RMSZ	# Z > 2
2	BOG	A	601	-	20,20,20	1.07	1 (5%)	25,25,25	0.93	0
2	BOG	A	602	-	20,20,20	1.10	1 (5%)	25,25,25	0.95	0
2	BOG	A	603	-	20,20,20	1.07	1 (5%)	25,25,25	1.03	2 (8%)
2	BOG	A	604	-	20,20,20	1.07	1 (5%)	25,25,25	0.85	0
2	BOG	B	601	-	20,20,20	1.07	1 (5%)	25,25,25	0.81	0
2	BOG	B	602	-	20,20,20	1.09	1 (5%)	25,25,25	0.78	0
2	BOG	B	603	-	20,20,20	1.07	1 (5%)	25,25,25	0.92	0
2	BOG	B	604	1	20,20,20	1.04	1 (5%)	25,25,25	1.22	2 (8%)
2	BOG	B	605	-	8,8,20	0.33	0	7,7,25	0.61	0
2	BOG	B	606	-	20,20,20	1.05	1 (5%)	25,25,25	0.88	0
2	BOG	B	607	-	20,20,20	1.09	1 (5%)	25,25,25	0.79	0

In the following table, the Chirals column lists the number of chiral outliers, the number of chiral centers analysed, the number of these observed in the model and the number defined in the Chemical Component Dictionary. Similar counts are reported in the Torsion and Rings columns. '-' means no outliers of that kind were identified.

Mol	Type	Chain	Res	Link	Chirals	Torsions	Rings
2	BOG	A	601	-	-	0/11/31/31	0/1/1/1
2	BOG	A	602	-	-	0/11/31/31	0/1/1/1
2	BOG	A	603	-	-	0/11/31/31	0/1/1/1
2	BOG	A	604	-	-	0/11/31/31	0/1/1/1
2	BOG	B	601	-	-	0/11/31/31	0/1/1/1
2	BOG	B	602	-	-	0/11/31/31	0/1/1/1
2	BOG	B	603	-	-	0/11/31/31	0/1/1/1
2	BOG	B	604	1	-	0/11/31/31	0/1/1/1
2	BOG	B	605	-	-	0/6/6/31	0/0/0/1
2	BOG	B	606	-	-	0/11/31/31	0/1/1/1
2	BOG	B	607	-	-	0/11/31/31	0/1/1/1

All (10) bond length outliers are listed below:

Mol	Chain	Res	Type	Atoms	Z	Observed(Å)	Ideal(Å)
2	A	603	BOG	O5-C1	3.32	1.50	1.41
2	B	604	BOG	O5-C1	3.47	1.50	1.41
2	B	606	BOG	O5-C1	3.49	1.50	1.41
2	A	601	BOG	O5-C1	3.51	1.50	1.41
2	A	602	BOG	O5-C1	3.53	1.51	1.41
2	B	601	BOG	O5-C1	3.56	1.51	1.41
2	B	602	BOG	O5-C1	3.58	1.51	1.41
2	B	603	BOG	O5-C1	3.58	1.51	1.41
2	A	604	BOG	O5-C1	3.59	1.51	1.41
2	B	607	BOG	O5-C1	3.69	1.51	1.41

All (4) bond angle outliers are listed below:

Mol	Chain	Res	Type	Atoms	Z	Observed(°)	Ideal(°)
2	A	603	BOG	C6-C5-C4	-2.53	107.01	112.99
2	A	603	BOG	O5-C5-C4	2.74	114.73	109.69
2	B	604	BOG	C3-C4-C5	3.03	115.66	110.24
2	B	604	BOG	O1-C1-C2	3.45	113.82	108.24

There are no chirality outliers.

There are no torsion outliers.

There are no ring outliers.

6 monomers are involved in 8 short contacts:

Mol	Chain	Res	Type	Clashes	Symm-Clashes
2	A	601	BOG	1	0
2	A	602	BOG	2	0
2	A	604	BOG	1	0
2	B	602	BOG	1	0
2	B	603	BOG	2	0
2	B	607	BOG	2	0

5.7 Other polymers [i](#)

There are no such residues in this entry.

5.8 Polymer linkage issues [i](#)

There are no chain breaks in this entry.

6 Fit of model and data

6.1 Protein, DNA and RNA chains

In the following table, the column labelled ‘#RSRZ > 2’ contains the number (and percentage) of RSRZ outliers, followed by percent RSRZ outliers for the chain as percentile scores relative to all X-ray entries and entries of similar resolution. The OWAB column contains the minimum, median, 95th percentile and maximum values of the occupancy-weighted average B-factor per residue. The column labelled ‘Q < 0.9’ lists the number of (and percentage) of residues with an average occupancy less than 0.9.

Mol	Chain	Analysed	<RSRZ>	#RSRZ>2	OWAB(Å ²)	Q<0.9
1	A	507/519 (97%)	0.54	64 (12%) 3 3	50, 86, 166, 225	0
1	B	503/519 (96%)	0.54	66 (13%) 3 3	50, 88, 170, 236	0
All	All	1010/1038 (97%)	0.54	130 (12%) 3 3	50, 87, 170, 236	0

All (130) RSRZ outliers are listed below:

Mol	Chain	Res	Type	RSRZ
1	A	158	ASP	9.8
1	A	475	ILE	9.8
1	A	472	ILE	9.4
1	A	474	LYS	9.1
1	B	471	TYR	7.7
1	B	135	THR	6.7
1	B	450	TYR	6.3
1	A	473	PRO	5.8
1	B	447	ILE	5.6
1	B	320	PHE	5.3
1	B	36	ALA	5.1
1	A	230	LEU	5.1
1	A	489	TYR	4.9
1	A	238	LEU	4.9
1	B	234	ASP	4.7
1	A	157	GLY	4.7
1	A	235	PHE	4.7
1	B	235	PHE	4.6
1	B	489	TYR	4.4
1	A	243	VAL	4.3
1	A	490	ILE	4.2
1	B	28	PHE	4.1
1	A	495	LEU	4.0
1	A	450	TYR	4.0

Continued on next page...

Continued from previous page...

Mol	Chain	Res	Type	RSRZ
1	A	232	THR	3.9
1	A	241	PRO	3.9
1	B	460	LEU	3.8
1	B	488	PHE	3.7
1	B	490	ILE	3.5
1	B	236	GLU	3.5
1	B	446	ARG	3.5
1	B	335	ALA	3.5
1	A	488	PHE	3.4
1	B	441	ILE	3.4
1	A	231	TRP	3.4
1	B	240	ASP	3.4
1	A	233	PRO	3.4
1	A	496	PHE	3.3
1	B	389	SER	3.3
1	A	493	LEU	3.2
1	B	134	ALA	3.2
1	B	469	ARG	3.1
1	B	32	PRO	3.1
1	A	299	ILE	3.1
1	B	491	ILE	3.1
1	A	130	PRO	3.1
1	B	493	LEU	3.1
1	A	245	ILE	3.0
1	A	234	ASP	3.0
1	A	86	ARG	3.0
1	A	42	ALA	3.0
1	B	242	GLY	3.0
1	A	229	PHE	2.9
1	B	140	ILE	2.9
1	B	30	ARG	2.9
1	B	416	GLY	2.9
1	A	381	TRP	2.9
1	A	156	LYS	2.8
1	B	233	PRO	2.8
1	B	472	ILE	2.8
1	A	486	THR	2.8
1	A	494	PHE	2.8
1	B	215	LEU	2.8
1	A	309	ALA	2.8
1	A	154	VAL	2.8
1	A	155	PRO	2.8

Continued on next page...

Continued from previous page...

Mol	Chain	Res	Type	RSRZ
1	A	99	TRP	2.7
1	A	311	ALA	2.7
1	A	479	THR	2.7
1	B	392	LEU	2.7
1	B	494	PHE	2.7
1	B	99	TRP	2.7
1	B	495	LEU	2.6
1	B	508	ARG	2.6
1	B	390	ALA	2.6
1	A	45	ILE	2.6
1	B	474	LYS	2.6
1	A	497	LEU	2.6
1	B	414	PHE	2.6
1	B	42	ALA	2.6
1	B	103	VAL	2.6
1	A	334	THR	2.6
1	B	425	TRP	2.6
1	B	4	LYS	2.5
1	B	12	LEU	2.5
1	B	231	TRP	2.5
1	B	467	TRP	2.5
1	A	390	ALA	2.5
1	B	492	GLY	2.5
1	A	40	GLY	2.4
1	B	473	PRO	2.4
1	B	158	ASP	2.4
1	A	510	HIS	2.4
1	A	477	GLU	2.4
1	B	499	PHE	2.3
1	A	498	THR	2.3
1	B	133	ASN	2.3
1	A	240	ASP	2.3
1	A	388	PHE	2.3
1	A	244	TRP	2.3
1	B	131	PRO	2.3
1	A	499	PHE	2.3
1	B	463	LEU	2.3
1	A	492	GLY	2.3
1	A	320	PHE	2.3
1	B	498	THR	2.3
1	B	510	HIS	2.3
1	B	500	LEU	2.3

Continued on next page...

Continued from previous page...

Mol	Chain	Res	Type	RSRZ
1	A	469	ARG	2.2
1	A	414	PHE	2.2
1	A	237	LYS	2.2
1	B	459	PHE	2.2
1	B	486	THR	2.2
1	A	98	LEU	2.2
1	B	442	ILE	2.2
1	B	388	PHE	2.2
1	A	471	TYR	2.2
1	B	230	LEU	2.2
1	B	272	ASP	2.2
1	A	385	ILE	2.1
1	A	465	VAL	2.1
1	A	389	SER	2.1
1	B	29	LEU	2.1
1	B	386	VAL	2.0
1	A	491	ILE	2.0
1	A	96	PHE	2.0
1	B	443	LYS	2.0
1	B	98	LEU	2.0
1	A	189	LYS	2.0
1	A	476	MET	2.0

6.2 Non-standard residues in protein, DNA, RNA chains [\(i\)](#)

There are no non-standard protein/DNA/RNA residues in this entry.

6.3 Carbohydrates [\(i\)](#)

There are no carbohydrates in this entry.

6.4 Ligands [\(i\)](#)

In the following table, the Atoms column lists the number of modelled atoms in the group and the number defined in the chemical component dictionary. The B-factors column lists the minimum, median, 95th percentile and maximum values of B factors of atoms in the group. The column labelled 'Q< 0.9' lists the number of atoms with occupancy less than 0.9.

Mol	Type	Chain	Res	Atoms	RSCC	RSR	B-factors(Å ²)	Q<0.9
2	BOG	B	606	20/20	0.57	0.32	116,135,140,140	0

Continued on next page...

Continued from previous page...

Mol	Type	Chain	Res	Atoms	RSCC	RSR	B-factors(\AA^2)	Q<0.9
2	BOG	B	603	20/20	0.62	0.24	107,123,126,126	0
2	BOG	B	607	20/20	0.67	0.48	120,131,132,132	0
2	BOG	B	605	9/20	0.68	0.39	86,88,92,93	0
2	BOG	A	604	20/20	0.70	0.24	111,131,135,135	0
2	BOG	A	601	20/20	0.76	0.24	109,122,124,124	0
2	BOG	B	601	20/20	0.77	0.30	97,107,110,111	0
2	BOG	B	604	20/20	0.77	0.47	92,113,118,121	0
2	BOG	A	603	20/20	0.81	0.25	117,127,131,131	0
2	BOG	A	602	20/20	0.81	0.18	80,115,122,125	0
2	BOG	B	602	20/20	0.82	0.23	75,108,114,115	0

6.5 Other polymers [i](#)

There are no such residues in this entry.