



# Full wwPDB X-ray Structure Validation Report ⓘ

Aug 6, 2023 – 04:05 AM EDT

PDB ID : 1JBU  
Title : Coagulation Factor VII Zymogen (EGF2/Protease) in Complex with Inhibitory Exosite Peptide A-183  
Authors : Eigenbrot, C.; Kirchhofer, D.; Dennis, M.S.; Santell, L.; Lazarus, R.A.; Stamos, J.; Ultsch, M.H.  
Deposited on : 2001-06-06  
Resolution : 2.00 Å(reported)

This is a Full wwPDB X-ray Structure Validation Report for a publicly released PDB entry.

We welcome your comments at [validation@mail.wwpdb.org](mailto:validation@mail.wwpdb.org)

A user guide is available at

<https://www.wwpdb.org/validation/2017/XrayValidationReportHelp>

with specific help available everywhere you see the ⓘ symbol.

The types of validation reports are described at

<http://www.wwpdb.org/validation/2017/FAQs#types>.

---

The following versions of software and data (see [references ⓘ](#)) were used in the production of this report:

MolProbity : 4.02b-467  
Mogul : 1.8.5 (274361), CSD as541be (2020)  
Xtrriage (Phenix) : **NOT EXECUTED**  
EDS : **NOT EXECUTED**  
Percentile statistics : 20191225.v01 (using entries in the PDB archive December 25th 2019)  
Ideal geometry (proteins) : Engh & Huber (2001)  
Ideal geometry (DNA, RNA) : Parkinson et al. (1996)  
Validation Pipeline (wwPDB-VP) : 2.35

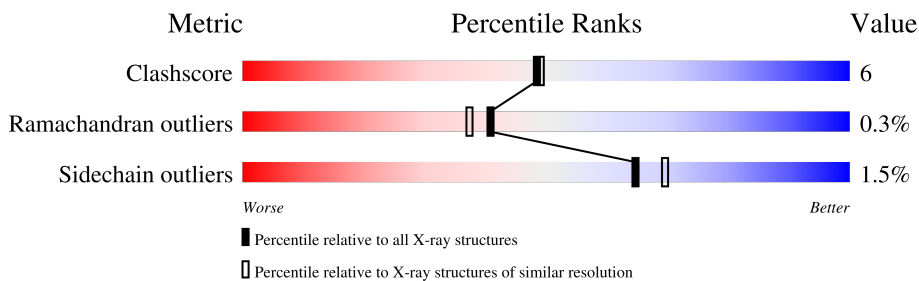
# 1 Overall quality at a glance

The following experimental techniques were used to determine the structure:

*X-RAY DIFFRACTION*

The reported resolution of this entry is 2.00 Å.

Percentile scores (ranging between 0-100) for global validation metrics of the entry are shown in the following graphic. The table shows the number of entries on which the scores are based.



Metric	Whole archive (#Entries)	Similar resolution (#Entries, resolution range(Å))
Clashscore	141614	9178 (2.00-2.00)
Ramachandran outliers	138981	9054 (2.00-2.00)
Sidechain outliers	138945	9053 (2.00-2.00)

The table below summarises the geometric issues observed across the polymeric chains and their fit to the electron density. The red, orange, yellow and green segments of the lower bar indicate the fraction of residues that contain outliers for  $\geq 3$ , 2, 1 and 0 types of geometric quality criteria respectively. A grey segment represents the fraction of residues that are not modelled. The numeric value for each fraction is indicated below the corresponding segment, with a dot representing fractions  $\leq 5\%$ .

Note EDS was not executed.

Mol	Chain	Length	Quality of chain
1	H	254	
2	L	63	
3	X	15	

## 2 Entry composition [i](#)

There are 6 unique types of molecules in this entry. The entry contains 2677 atoms, of which 0 are hydrogens and 0 are deuteriums.

In the tables below, the ZeroOcc column contains the number of atoms modelled with zero occupancy, the AltConf column contains the number of residues with at least one atom in alternate conformation and the Trace column contains the number of residues modelled with at most 2 atoms.

- Molecule 1 is a protein called COAGULATION FACTOR VII.

Mol	Chain	Residues	Atoms					ZeroOcc	AltConf	Trace
			Total	C	N	O	S			
1	H	239	1921	1218	347	343	13	34	5	0

- Molecule 2 is a protein called COAGULATION FACTOR VII.

Mol	Chain	Residues	Atoms					ZeroOcc	AltConf	Trace
			Total	C	N	O	S			
2	L	54	404	245	70	82	7	2	0	0

- Molecule 3 is a protein called Peptide exosite inhibitor A-183.

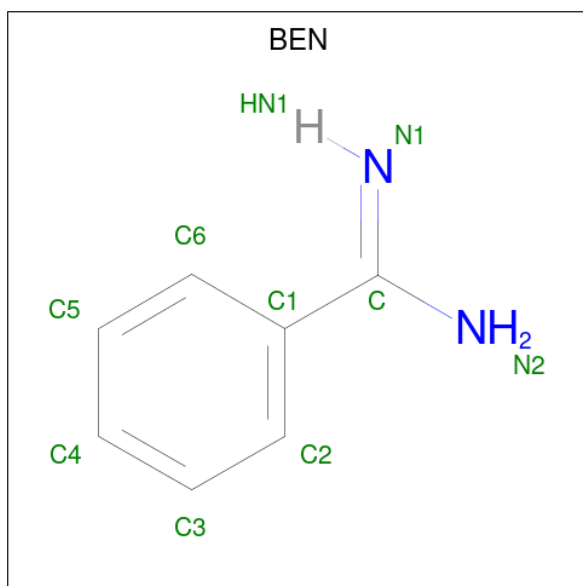
Mol	Chain	Residues	Atoms					ZeroOcc	AltConf	Trace
			Total	C	N	O	S			
3	X	15	140	89	21	28	2	0	0	0

- Molecule 4 is SULFATE ION (three-letter code: SO4) (formula: O<sub>4</sub>S).



Mol	Chain	Residues	Atoms			ZeroOcc	AltConf
4	H	1	Total	O	S	4	0
			5	4	1		

- Molecule 5 is BENZAMIDINE (three-letter code: BEN) (formula: C<sub>7</sub>H<sub>8</sub>N<sub>2</sub>).



Mol	Chain	Residues	Atoms			ZeroOcc	AltConf
5	H	1	Total	C	N	0	0
			9	7	2		

- Molecule 6 is water.

Mol	Chain	Residues	Atoms		ZeroOcc	AltConf
6	H	136	Total	O	0	0
			136	136		
6	L	43	Total	O	0	0
			43	43		
6	X	19	Total	O	0	0
			19	19		



## 4 Data and refinement statistics

Xtrriage (Phenix) and EDS were not executed - this section is therefore incomplete.

Property	Value	Source
Space group	P 21 21 21	Depositor
Cell constants a, b, c, $\alpha$ , $\beta$ , $\gamma$	67.44Å 84.51Å 84.84Å 90.00° 90.00° 90.00°	Depositor
Resolution (Å)	35.00 – 2.00	Depositor
% Data completeness (in resolution range)	99.9 (35.00-2.00)	Depositor
$R_{merge}$	0.06	Depositor
$R_{sym}$	(Not available)	Depositor
Refinement program	X-PLOR 98.1	Depositor
R, $R_{free}$	0.204 , 0.227	Depositor
Estimated twinning fraction	No twinning to report.	Xtrriage
Total number of atoms	2677	wwPDB-VP
Average B, all atoms (Å <sup>2</sup> )	36.0	wwPDB-VP

## 5 Model quality [i](#)

### 5.1 Standard geometry [i](#)

Bond lengths and bond angles in the following residue types are not validated in this section: BEN, SO4

The Z score for a bond length (or angle) is the number of standard deviations the observed value is removed from the expected value. A bond length (or angle) with  $|Z| > 5$  is considered an outlier worth inspection. RMSZ is the root-mean-square of all Z scores of the bond lengths (or angles).

Mol	Chain	Bond lengths		Bond angles	
		RMSZ	# Z  >5	RMSZ	# Z  >5
1	H	0.39	0/1970	0.66	2/2678 (0.1%)
2	L	0.40	0/411	0.59	0/555
3	X	0.39	0/145	0.57	0/197
All	All	0.39	0/2526	0.64	2/3430 (0.1%)

There are no bond length outliers.

All (2) bond angle outliers are listed below:

Mol	Chain	Res	Type	Atoms	Z	Observed(°)	Ideal(°)
1	H	68	LEU	CA-CB-CG	6.21	129.59	115.30
1	H	199	HIS	N-CA-C	-5.11	97.21	111.00

There are no chirality outliers.

There are no planarity outliers.

### 5.2 Too-close contacts [i](#)

In the following table, the Non-H and H(model) columns list the number of non-hydrogen atoms and hydrogen atoms in the chain respectively. The H(added) column lists the number of hydrogen atoms added and optimized by MolProbity. The Clashes column lists the number of clashes within the asymmetric unit, whereas Symm-Clashes lists symmetry-related clashes.

Mol	Chain	Non-H	H(model)	H(added)	Clashes	Symm-Clashes
1	H	1921	0	1886	24	0
2	L	404	0	376	5	0
3	X	140	0	117	0	0
4	H	5	0	0	0	0
5	H	9	0	7	0	0
6	H	136	0	0	0	0

*Continued on next page...*

Continued from previous page...

Mol	Chain	Non-H	H(model)	H(added)	Clashes	Symm-Clashes
6	L	43	0	0	0	0
6	X	19	0	0	0	0
All	All	2677	0	2386	29	0

The all-atom clashscore is defined as the number of clashes found per 1000 atoms (including hydrogen atoms). The all-atom clashscore for this structure is 6.

All (29) close contacts within the same asymmetric unit are listed below, sorted by their clash magnitude.

Atom-1	Atom-2	Interatomic distance (Å)	Clash overlap (Å)
1:H:137:LEU:HD11	1:H:154:GLU:HG3	1.64	0.77
1:H:26:GLU:HG2	1:H:152:ALA:HB3	1.83	0.60
1:H:45:THR:OG1	1:H:198:PRO:HB3	2.03	0.57
1:H:141:TRP:CD1	1:H:193:GLY:HA3	2.41	0.56
1:H:32:LEU:HB2	1:H:141:TRP:CZ2	2.41	0.56
2:L:101:TYR:OH	2:L:115:HIS:HD2	1.89	0.55
1:H:169:LEU:HD12	1:H:182:CYS:SG	2.48	0.54
1:H:42:CYS:HA	1:H:192:LYS:O	2.08	0.53
1:H:30[B]:GLN:OE1	1:H:139:SER:HB3	2.08	0.53
2:L:110:ARG:HD2	2:L:110:ARG:C	2.30	0.52
1:H:190:SER:O	1:H:194:ASP:HB3	2.11	0.51
1:H:137:LEU:HD11	1:H:154:GLU:CG	2.38	0.51
1:H:88:VAL:HG22	1:H:106:LEU:HG	1.93	0.50
1:H:31:VAL:HG22	1:H:68:LEU:HD13	1.93	0.49
1:H:30[B]:GLN:HE21	1:H:141:TRP:HE1	1.58	0.49
2:L:92:VAL:HG13	2:L:93:ASN:ND2	2.27	0.49
2:L:143:LYS:O	2:L:143:LYS:HG2	2.13	0.48
1:H:170(D):LYS:NZ	1:H:170(G):ASP:HB3	2.29	0.48
1:H:124:PRO:O	1:H:235:ILE:HD13	2.15	0.46
1:H:169:LEU:CD1	1:H:182:CYS:SG	3.04	0.46
1:H:43:GLY:HA3	1:H:193:GLY:O	2.17	0.45
1:H:141:TRP:HD1	1:H:193:GLY:C	2.19	0.44
1:H:185:SER:HB2	1:H:217:GLN:HA	2.00	0.44
1:H:98:THR:HG23	1:H:170(G):ASP:HB2	1.99	0.43
1:H:30[B]:GLN:OE1	1:H:139:SER:CB	2.65	0.43
1:H:139:SER:HB2	1:H:198:PRO:HG2	2.00	0.43
2:L:139:PRO:O	2:L:143:LYS:N	2.52	0.43
1:H:191:CYS:SG	1:H:219:GLY:O	2.77	0.42
1:H:70:GLU:HB3	1:H:78:GLY:O	2.21	0.41

There are no symmetry-related clashes.



## 5.3 Torsion angles [i](#)

### 5.3.1 Protein backbone [i](#)

In the following table, the Percentiles column shows the percent Ramachandran outliers of the chain as a percentile score with respect to all X-ray entries followed by that with respect to entries of similar resolution.

The Analysed column shows the number of residues for which the backbone conformation was analysed, and the total number of residues.

Mol	Chain	Analysed	Favoured	Allowed	Outliers	Percentiles	
1	H	238/254 (94%)	228 (96%)	9 (4%)	1 (0%)	34	30
2	L	52/63 (82%)	48 (92%)	4 (8%)	0	100	100
3	X	13/15 (87%)	13 (100%)	0	0	100	100
All	All	303/332 (91%)	289 (95%)	13 (4%)	1 (0%)	41	37

All (1) Ramachandran outliers are listed below:

Mol	Chain	Res	Type
1	H	190	SER

### 5.3.2 Protein sidechains [i](#)

In the following table, the Percentiles column shows the percent sidechain outliers of the chain as a percentile score with respect to all X-ray entries followed by that with respect to entries of similar resolution.

The Analysed column shows the number of residues for which the sidechain conformation was analysed, and the total number of residues.

Mol	Chain	Analysed	Rotameric	Outliers	Percentiles	
1	H	211/216 (98%)	209 (99%)	2 (1%)	78	83
2	L	47/54 (87%)	46 (98%)	1 (2%)	53	57
3	X	15/15 (100%)	14 (93%)	1 (7%)	16	11
All	All	273/285 (96%)	269 (98%)	4 (2%)	65	69

All (4) residues with a non-rotameric sidechain are listed below:

Mol	Chain	Res	Type
1	H	68	LEU
1	H	194	ASP

*Continued on next page...*

*Continued from previous page...*

Mol	Chain	Res	Type
2	L	110	ARG
3	X	15	ARG

Sometimes sidechains can be flipped to improve hydrogen bonding and reduce clashes. All (4) such sidechains are listed below:

Mol	Chain	Res	Type
1	H	170(A)	GLN
1	H	217	GLN
2	L	93	ASN
2	L	115	HIS

### 5.3.3 RNA [i](#)

There are no RNA molecules in this entry.

## 5.4 Non-standard residues in protein, DNA, RNA chains [i](#)

There are no non-standard protein/DNA/RNA residues in this entry.

## 5.5 Carbohydrates [i](#)

There are no monosaccharides in this entry.

## 5.6 Ligand geometry [i](#)

2 ligands are modelled in this entry.

In the following table, the Counts columns list the number of bonds (or angles) for which Mogul statistics could be retrieved, the number of bonds (or angles) that are observed in the model and the number of bonds (or angles) that are defined in the Chemical Component Dictionary. The Link column lists molecule types, if any, to which the group is linked. The Z score for a bond length (or angle) is the number of standard deviations the observed value is removed from the expected value. A bond length (or angle) with  $|Z| > 2$  is considered an outlier worth inspection. RMSZ is the root-mean-square of all Z scores of the bond lengths (or angles).

Mol	Type	Chain	Res	Link	Bond lengths			Bond angles		
					Counts	RMSZ	# Z  > 2	Counts	RMSZ	# Z  > 2
5	BEN	H	300	-	9,9,9	1.87	4 (44%)	7,11,11	2.85	5 (71%)
4	SO4	H	308	-	4,4,4	0.18	0	6,6,6	0.32	0

In the following table, the Chirals column lists the number of chiral outliers, the number of chiral centers analysed, the number of these observed in the model and the number defined in the Chemical Component Dictionary. Similar counts are reported in the Torsion and Rings columns. '-' means no outliers of that kind were identified.

Mol	Type	Chain	Res	Link	Chirals	Torsions	Rings
5	BEN	H	300	-	-	0/4/4/4	0/1/1/1

All (4) bond length outliers are listed below:

Mol	Chain	Res	Type	Atoms	Z	Observed(Å)	Ideal(Å)
5	H	300	BEN	C1-C	-2.71	1.42	1.47
5	H	300	BEN	C5-C6	2.57	1.44	1.38
5	H	300	BEN	C5-C4	2.15	1.43	1.38
5	H	300	BEN	C4-C3	2.13	1.43	1.38

All (5) bond angle outliers are listed below:

Mol	Chain	Res	Type	Atoms	Z	Observed(°)	Ideal(°)
5	H	300	BEN	C4-C3-C2	4.04	126.34	120.19
5	H	300	BEN	C3-C2-C1	-3.66	116.01	120.34
5	H	300	BEN	C1-C-N2	3.11	122.73	118.05
5	H	300	BEN	C5-C4-C3	-2.88	114.57	119.93
5	H	300	BEN	C6-C1-C2	2.50	122.15	118.59

There are no chirality outliers.

There are no torsion outliers.

There are no ring outliers.

No monomer is involved in short contacts.

## 5.7 Other polymers [i](#)

There are no such residues in this entry.

## 5.8 Polymer linkage issues [i](#)

There are no chain breaks in this entry.

## 6 Fit of model and data

### 6.1 Protein, DNA and RNA chains

EDS was not executed - this section is therefore empty.

### 6.2 Non-standard residues in protein, DNA, RNA chains

EDS was not executed - this section is therefore empty.

### 6.3 Carbohydrates

EDS was not executed - this section is therefore empty.

### 6.4 Ligands

EDS was not executed - this section is therefore empty.

### 6.5 Other polymers

EDS was not executed - this section is therefore empty.