



Full wwPDB EM Validation Report ⓘ

Nov 20, 2022 – 03:12 PM EST

PDB ID : 3JC2
EMDB ID : EMD-3245
Title : The structure of the mammalian Sec61 channel opened by a signal sequence
Authors : Voorhees, R.M.; Hegde, R.S.
Deposited on : 2015-11-15
Resolution : 3.60 Å(reported)
Based on initial models : 1RH5, 3J7Q

This is a Full wwPDB EM Validation Report for a publicly released PDB entry.

We welcome your comments at validation@mail.wwpdb.org

A user guide is available at

<https://www.wwpdb.org/validation/2017/EMValidationReportHelp>

with specific help available everywhere you see the ⓘ symbol.

The types of validation reports are described at

<http://www.wwpdb.org/validation/2017/FAQs#types>.

The following versions of software and data (see [references ⓘ](#)) were used in the production of this report:

EMDB validation analysis : 0.0.1.dev43
MolProbity : 4.02b-467
Percentile statistics : 20191225.v01 (using entries in the PDB archive December 25th 2019)
MapQ : 1.9.9
Ideal geometry (proteins) : Engh & Huber (2001)
Ideal geometry (DNA, RNA) : Parkinson et al. (1996)
Validation Pipeline (wwPDB-VP) : 2.31.3

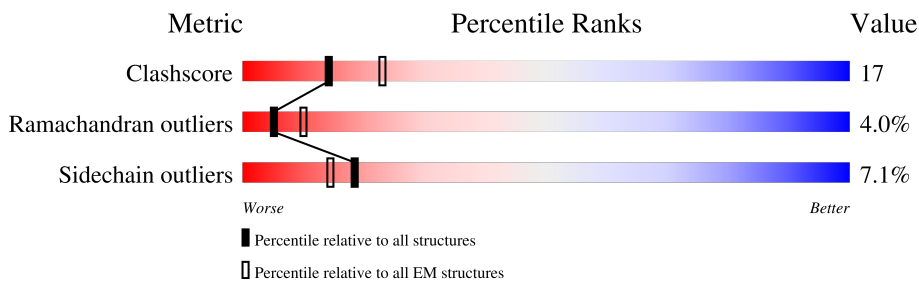
1 Overall quality at a glance

The following experimental techniques were used to determine the structure:

ELECTRON MICROSCOPY

The reported resolution of this entry is 3.60 Å.

Percentile scores (ranging between 0-100) for global validation metrics of the entry are shown in the following graphic. The table shows the number of entries on which the scores are based.



Metric	Whole archive (#Entries)	EM structures (#Entries)
Clashscore	158937	4297
Ramachandran outliers	154571	4023
Sidechain outliers	154315	3826

The table below summarises the geometric issues observed across the polymeric chains and their fit to the map. The red, orange, yellow and green segments of the bar indicate the fraction of residues that contain outliers for ≥ 3 , 2, 1 and 0 types of geometric quality criteria respectively. A grey segment represents the fraction of residues that are not modelled. The numeric value for each fraction is indicated below the corresponding segment, with a dot representing fractions $\leq 5\%$. The upper red bar (where present) indicates the fraction of residues that have poor fit to the EM map (all-atom inclusion $< 40\%$). The numeric value is given above the bar.

Mol	Chain	Length	Quality of chain
1	1	476	
2	2	62	
3	w	19	
4	3	32	

2 Entry composition [i](#)

There are 4 unique types of molecules in this entry. The entry contains 3911 atoms, of which 0 are hydrogens and 0 are deuteriums.

In the tables below, the AltConf column contains the number of residues with at least one atom in alternate conformation and the Trace column contains the number of residues modelled with at most 2 atoms.

- Molecule 1 is a protein called Protein transport protein Sec61 subunit alpha isoform 1.

Mol	Chain	Residues	Atoms					AltConf	Trace
			Total	C	N	O	S		
1	1	401	3115	2053	501	542	19	0	0

- Molecule 2 is a protein called Protein transport protein Sec61 subunit gamma.

Mol	Chain	Residues	Atoms					AltConf	Trace
			Total	C	N	O	S		
2	2	62	494	326	86	79	3	0	0

- Molecule 3 is a protein called Prolactin.

Mol	Chain	Residues	Atoms					AltConf	Trace
			Total	C	N	O	S		
3	w	19	142	94	24	23	1	0	0

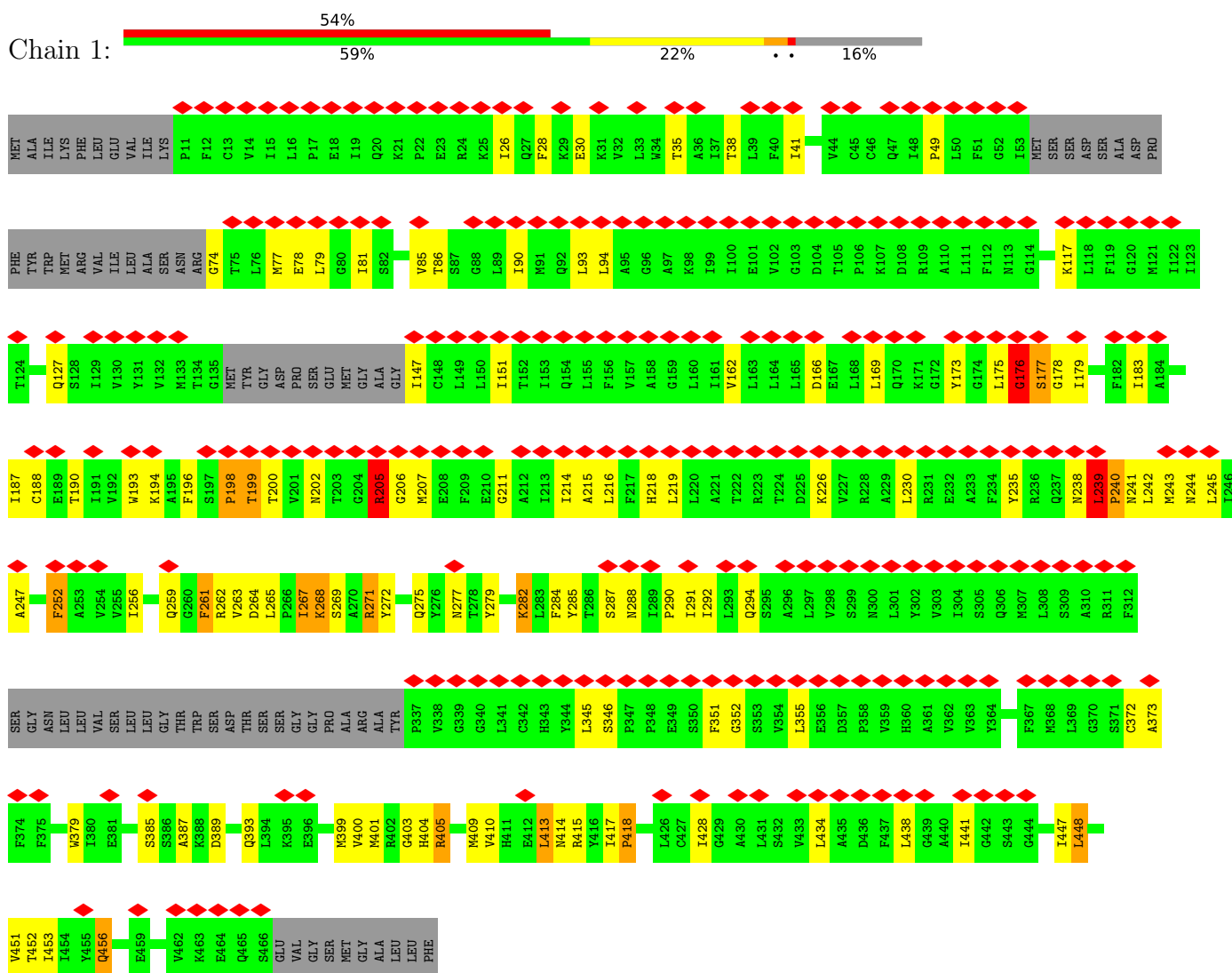
- Molecule 4 is a protein called Protein transport protein Sec61 subunit beta.

Mol	Chain	Residues	Atoms				AltConf	Trace
			Total	C	N	O		
4	3	32	160	96	32	32	0	0

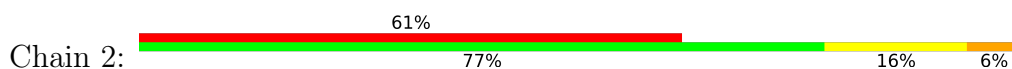
3 Residue-property plots

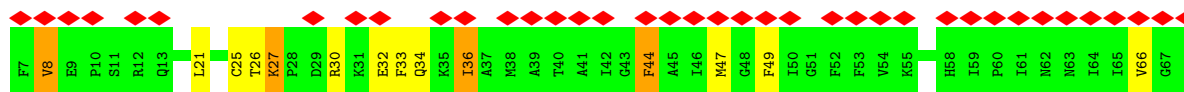
These plots are drawn for all protein, RNA, DNA and oligosaccharide chains in the entry. The first graphic for a chain summarises the proportions of the various outlier classes displayed in the second graphic. The second graphic shows the sequence view annotated by issues in geometry and atom inclusion in map density. Residues are color-coded according to the number of geometric quality criteria for which they contain at least one outlier: green = 0, yellow = 1, orange = 2 and red = 3 or more. A red diamond above a residue indicates a poor fit to the EM map for this residue (all-atom inclusion < 40%). Stretches of 2 or more consecutive residues without any outlier are shown as a green connector. Residues present in the sample, but not in the model, are shown in grey.

- Molecule 1: Protein transport protein Sec61 subunit alpha isoform 1

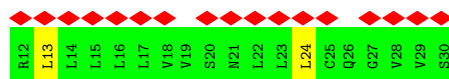
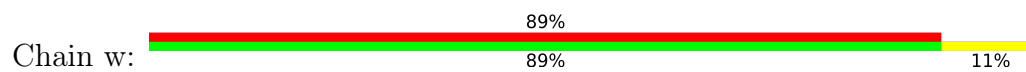


- Molecule 2: Protein transport protein Sec61 subunit gamma

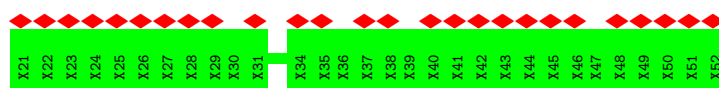
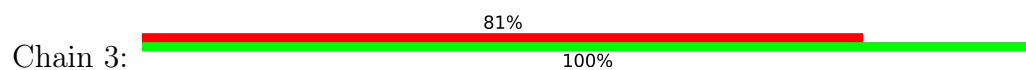




- Molecule 3: Prolactin



- Molecule 4: Protein transport protein Sec61 subunit beta



4 Experimental information

Property	Value	Source
EM reconstruction method	SINGLE PARTICLE	Depositor
Imposed symmetry	POINT, C1	Depositor
Number of particles used	101339	Depositor
Resolution determination method	Not provided	
CTF correction method	Not provided	
Microscope	FEI TITAN KRIOS	Depositor
Voltage (kV)	300	Depositor
Electron dose ($e^-/\text{\AA}^2$)	27	Depositor
Minimum defocus (nm)	2000	Depositor
Maximum defocus (nm)	3500	Depositor
Magnification	104478	Depositor
Image detector	FEI FALCON II (4k x 4k)	Depositor
Maximum map value	0.667	Depositor
Minimum map value	-0.407	Depositor
Average map value	0.001	Depositor
Map value standard deviation	0.019	Depositor
Recommended contour level	0.07	Depositor
Map size (\AA)	562.8, 562.8, 562.8	wwPDB
Map dimensions	420, 420, 420	wwPDB
Map angles ($^\circ$)	90.0, 90.0, 90.0	wwPDB
Pixel spacing (\AA)	1.3399999, 1.3399999, 1.3399999	Depositor

5 Model quality i

5.1 Standard geometry i

The Z score for a bond length (or angle) is the number of standard deviations the observed value is removed from the expected value. A bond length (or angle) with $|Z| > 5$ is considered an outlier worth inspection. RMSZ is the root-mean-square of all Z scores of the bond lengths (or angles).

Mol	Chain	Bond lengths		Bond angles	
		RMSZ	# $ Z > 5$	RMSZ	# $ Z > 5$
1	1	0.58	1/3179 (0.0%)	0.81	7/4305 (0.2%)
2	2	0.55	0/504	0.70	0/673
3	w	0.51	0/141	0.55	0/191
All	All	0.58	1/3824 (0.0%)	0.79	7/5169 (0.1%)

Chiral center outliers are detected by calculating the chiral volume of a chiral center and verifying if the center is modelled as a planar moiety or with the opposite hand. A planarity outlier is detected by checking planarity of atoms in a peptide group, atoms in a mainchain group or atoms of a sidechain that are expected to be planar.

Mol	Chain	#Chirality outliers	#Planarity outliers
1	1	0	2

All (1) bond length outliers are listed below:

Mol	Chain	Res	Type	Atoms	Z	Observed(Å)	Ideal(Å)
1	1	267	ILE	C-N	14.16	1.66	1.34

All (7) bond angle outliers are listed below:

Mol	Chain	Res	Type	Atoms	Z	Observed($^{\circ}$)	Ideal($^{\circ}$)
1	1	267	ILE	O-C-N	-18.12	93.71	122.70
1	1	282	LYS	O-C-N	12.99	143.48	122.70
1	1	282	LYS	CA-C-N	-10.13	94.92	117.20
1	1	405	ARG	NE-CZ-NH2	7.34	123.97	120.30
1	1	282	LYS	C-N-CA	-6.78	104.76	121.70
1	1	205	ARG	CA-CB-CG	5.32	125.10	113.40
1	1	267	ILE	CA-C-N	5.30	128.86	117.20

There are no chirality outliers.

All (2) planarity outliers are listed below:

Mol	Chain	Res	Type	Group
1	1	176	GLY	Peptide
1	1	198	PRO	Peptide

5.2 Too-close contacts [i](#)

In the following table, the Non-H and H(model) columns list the number of non-hydrogen atoms and hydrogen atoms in the chain respectively. The H(added) column lists the number of hydrogen atoms added and optimized by MolProbity. The Clashes column lists the number of clashes within the asymmetric unit, whereas Symm-Clashes lists symmetry-related clashes.

Mol	Chain	Non-H	H(model)	H(added)	Clashes	Symm-Clashes
1	1	3115	0	3246	125	0
2	2	494	0	527	27	0
3	w	142	0	168	0	0
4	3	160	0	34	0	0
All	All	3911	0	3975	128	0

The all-atom clashscore is defined as the number of clashes found per 1000 atoms (including hydrogen atoms). The all-atom clashscore for this structure is 17.

All (128) close contacts within the same asymmetric unit are listed below, sorted by their clash magnitude.

Atom-1	Atom-2	Interatomic distance (Å)	Clash overlap (Å)
1:1:74:GLY:N	1:1:78:GLU:OE2	1.75	1.18
1:1:187:ILE:CG2	2:2:47:MET:HG3	1.76	1.16
1:1:267:ILE:CD1	1:1:279:TYR:HB2	1.79	1.13
1:1:267:ILE:HD12	1:1:279:TYR:HB2	1.18	1.10
1:1:268:LYS:HD2	1:1:269:SER:O	1.53	1.05
1:1:199:THR:OG1	1:1:205:ARG:HB3	1.62	0.97
1:1:187:ILE:HG23	2:2:47:MET:HG3	1.48	0.95
1:1:187:ILE:HD13	2:2:44:PHE:N	1.85	0.92
1:1:187:ILE:CG2	2:2:47:MET:CG	2.50	0.90
1:1:49:PRO:HA	1:1:74:GLY:O	1.75	0.87
1:1:268:LYS:NZ	1:1:268:LYS:HB3	1.94	0.83
1:1:187:ILE:HG23	2:2:47:MET:CG	2.09	0.82
1:1:268:LYS:CD	1:1:269:SER:O	2.26	0.82
1:1:187:ILE:CD1	2:2:44:PHE:N	2.41	0.82
1:1:205:ARG:HG2	1:1:240:PRO:HB3	1.62	0.82
1:1:74:GLY:CA	1:1:78:GLU:OE2	2.30	0.80
1:1:187:ILE:CD1	2:2:44:PHE:H	1.99	0.75
1:1:90:ILE:O	1:1:94:LEU:HG	1.87	0.75

Continued on next page...

Continued from previous page...

Atom-1	Atom-2	Interatomic distance (Å)	Clash overlap (Å)
1:1:244:ASN:OD1	1:1:245:LEU:N	2.22	0.72
1:1:268:LYS:HD2	1:1:268:LYS:C	2.11	0.71
1:1:267:ILE:CD1	1:1:279:TYR:CB	2.63	0.71
1:1:256:ILE:HG22	1:1:451:VAL:HG11	1.74	0.68
1:1:216:LEU:HD12	1:1:242:LEU:HD12	1.76	0.68
1:1:241:ASN:HB2	1:1:244:ASN:HD21	1.60	0.67
1:1:267:ILE:HD11	1:1:279:TYR:HB2	1.74	0.67
1:1:268:LYS:HB3	1:1:268:LYS:HZ3	1.60	0.66
1:1:230:LEU:HD21	1:1:243:MET:SD	2.36	0.65
1:1:187:ILE:HG21	2:2:47:MET:CG	2.26	0.65
1:1:187:ILE:HG21	2:2:47:MET:HG3	1.77	0.65
1:1:199:THR:CB	1:1:205:ARG:HB3	2.27	0.65
1:1:401:MET:HB3	1:1:404:HIS:HD2	1.60	0.65
1:1:262:ARG:NH1	2:2:26:THR:HG21	2.15	0.62
1:1:400:VAL:HG12	1:1:401:MET:N	2.15	0.62
1:1:81:ILE:HD13	1:1:178:GLY:HA2	1.81	0.60
1:1:267:ILE:HD11	1:1:279:TYR:CB	2.31	0.59
1:1:200:THR:HA	1:1:214:ILE:HB	1.84	0.59
1:1:205:ARG:HE	1:1:240:PRO:HG2	1.68	0.58
1:1:434:LEU:O	1:1:438:LEU:HB2	2.04	0.58
1:1:235:TYR:CE1	1:1:239:LEU:HD22	2.40	0.57
1:1:205:ARG:HA	1:1:240:PRO:HA	1.87	0.57
1:1:401:MET:CB	1:1:404:HIS:HD2	2.17	0.57
1:1:268:LYS:HB3	1:1:268:LYS:HZ2	1.69	0.57
1:1:199:THR:HG1	1:1:205:ARG:HB3	1.67	0.56
1:1:187:ILE:HD11	2:2:44:PHE:CA	2.35	0.56
1:1:205:ARG:HE	1:1:240:PRO:CG	2.19	0.55
1:1:264:ASP:O	1:1:265:LEU:HD23	2.06	0.55
1:1:239:LEU:HD12	1:1:240:PRO:HD2	1.89	0.55
1:1:264:ASP:C	1:1:265:LEU:HD23	2.26	0.55
1:1:77:MET:HE1	1:1:162:VAL:HG21	1.89	0.55
1:1:77:MET:CE	1:1:162:VAL:HG21	2.38	0.55
1:1:187:ILE:HD11	2:2:44:PHE:N	2.20	0.55
1:1:205:ARG:HA	1:1:240:PRO:CA	2.36	0.55
1:1:400:VAL:HG12	1:1:401:MET:O	2.08	0.53
1:1:215:ALA:HB3	1:1:218:HIS:CD2	2.44	0.53
1:1:262:ARG:CZ	2:2:26:THR:HG21	2.38	0.53
1:1:187:ILE:CD1	2:2:44:PHE:CA	2.87	0.52
1:1:199:THR:HG23	1:1:214:ILE:C	2.30	0.52
1:1:199:THR:CB	1:1:205:ARG:CB	2.88	0.52
1:1:284:PHE:CE1	1:1:428:ILE:HD11	2.45	0.52

Continued on next page...

Continued from previous page...

Atom-1	Atom-2	Interatomic distance (Å)	Clash overlap (Å)
1:1:292:ILE:HD11	1:1:428:ILE:HG21	1.92	0.51
1:1:205:ARG:HA	1:1:240:PRO:CB	2.41	0.51
1:1:199:THR:HG23	1:1:214:ILE:HG22	1.91	0.51
1:1:241:ASN:HB2	1:1:244:ASN:ND2	2.26	0.51
1:1:256:ILE:HB	2:2:36:ILE:HD12	1.92	0.51
1:1:400:VAL:CG1	1:1:401:MET:N	2.73	0.51
1:1:242:LEU:O	1:1:245:LEU:HB3	2.11	0.51
1:1:74:GLY:C	1:1:78:GLU:OE2	2.50	0.50
1:1:93:LEU:HD21	1:1:379:TRP:CZ3	2.46	0.50
1:1:187:ILE:HD11	2:2:44:PHE:H	1.72	0.50
1:1:86:THR:O	1:1:90:ILE:HG12	2.12	0.49
1:1:256:ILE:HD11	2:2:33:PHE:CE2	2.47	0.49
1:1:252:PHE:CD2	1:1:447:ILE:HG23	2.48	0.49
2:2:30:ARG:O	2:2:34:GLN:N	2.44	0.49
1:1:199:THR:OG1	1:1:205:ARG:CB	2.49	0.48
1:1:206:GLY:N	1:1:240:PRO:HG3	2.28	0.48
1:1:199:THR:HG22	1:1:215:ALA:HA	1.96	0.48
1:1:193:TRP:HD1	1:1:441:ILE:HG23	1.77	0.48
1:1:372:CYS:SG	1:1:373:ALA:N	2.87	0.48
1:1:81:ILE:HG21	1:1:178:GLY:HA2	1.96	0.47
1:1:199:THR:HB	1:1:205:ARG:HB2	1.96	0.47
1:1:399:MET:O	1:1:400:VAL:CG2	2.62	0.47
1:1:261:PHE:CZ	2:2:27:LYS:HG2	2.50	0.47
2:2:30:ARG:HA	2:2:33:PHE:CB	2.45	0.47
1:1:81:ILE:HG22	1:1:85:VAL:HG23	1.97	0.46
1:1:187:ILE:CG2	2:2:47:MET:HG2	2.42	0.46
1:1:244:ASN:O	1:1:247:ALA:HB3	2.15	0.46
1:1:169:LEU:HD12	1:1:177:SER:HB3	1.98	0.46
1:1:259:GLN:NE2	1:1:452:THR:HG23	2.31	0.46
1:1:199:THR:HB	1:1:205:ARG:CB	2.46	0.45
1:1:196:PHE:CD2	1:1:198:PRO:CD	3.00	0.45
1:1:399:MET:C	1:1:400:VAL:HG23	2.37	0.45
1:1:413:LEU:HD12	1:1:414:ASN:N	2.31	0.44
1:1:205:ARG:CG	1:1:240:PRO:HB3	2.39	0.44
1:1:263:VAL:HG23	2:2:25:CYS:SG	2.58	0.44
1:1:259:GLN:HE21	1:1:448:LEU:HD12	1.83	0.43
1:1:244:ASN:ND2	1:1:441:ILE:HG13	2.33	0.43
1:1:403:GLY:O	1:1:404:HIS:CG	2.71	0.43
1:1:79:LEU:HD22	1:1:127:GLN:HG3	2.01	0.43
1:1:291:ILE:CG2	1:1:372:CYS:HB2	2.49	0.43
1:1:26:ILE:HG23	1:1:30:GLU:OE1	2.18	0.43

Continued on next page...

Continued from previous page...

Atom-1	Atom-2	Interatomic distance (Å)	Clash overlap (Å)
1:1:147:ILE:HG22	1:1:151:ILE:HD12	2.01	0.43
1:1:175:LEU:HD13	1:1:456:GLN:NE2	2.34	0.43
1:1:187:ILE:HG21	2:2:47:MET:HG2	2.00	0.43
1:1:399:MET:O	1:1:400:VAL:HG23	2.19	0.43
1:1:166:ASP:HA	1:1:177:SER:CB	2.49	0.42
1:1:175:LEU:HG	1:1:176:GLY:N	2.34	0.42
1:1:190:THR:HG22	1:1:194:LYS:HD2	2.00	0.42
1:1:417:ILE:HB	1:1:418:PRO:CD	2.50	0.42
1:1:409:MET:O	1:1:410:VAL:C	2.56	0.42
1:1:387:ALA:HB2	1:1:414:ASN:HD22	1.84	0.41
1:1:414:ASN:O	1:1:418:PRO:HD2	2.20	0.41
1:1:183:ILE:CG2	2:2:47:MET:HE3	2.51	0.41
1:1:175:LEU:HD13	1:1:456:GLN:CD	2.41	0.41
1:1:187:ILE:CD1	2:2:44:PHE:HA	2.51	0.41
1:1:205:ARG:NH1	1:1:219:LEU:HB3	2.35	0.41
1:1:267:ILE:O	1:1:277:ASN:O	2.39	0.41
1:1:271:ARG:O	1:1:272:TYR:CG	2.74	0.41
2:2:30:ARG:HA	2:2:33:PHE:HB2	2.02	0.41
1:1:35:THR:HG21	1:1:173:TYR:CE2	2.56	0.41
1:1:351:PHE:CG	1:1:352:GLY:N	2.88	0.41
1:1:267:ILE:HD12	1:1:279:TYR:CB	2.13	0.41
1:1:268:LYS:HD2	1:1:269:SER:N	2.35	0.41
1:1:74:GLY:N	1:1:78:GLU:CD	2.66	0.41
1:1:38:THR:HA	1:1:41:ILE:HG22	2.03	0.40
1:1:199:THR:CG2	1:1:215:ALA:CA	3.00	0.40
1:1:179:ILE:HG23	1:1:453:ILE:HG12	2.04	0.40
1:1:187:ILE:HD11	2:2:44:PHE:HB2	2.04	0.40
1:1:282:LYS:O	1:1:285:TYR:HB2	2.22	0.40

There are no symmetry-related clashes.

5.3 Torsion angles [\(i\)](#)

5.3.1 Protein backbone [\(i\)](#)

In the following table, the Percentiles column shows the percent Ramachandran outliers of the chain as a percentile score with respect to all PDB entries followed by that with respect to all EM entries.

The Analysed column shows the number of residues for which the backbone conformation was analysed, and the total number of residues.

Mol	Chain	Analysed	Favoured	Allowed	Outliers	Percentiles	
1	1	393/476 (83%)	333 (85%)	47 (12%)	13 (3%)	4	31
2	2	60/62 (97%)	49 (82%)	6 (10%)	5 (8%)	1	10
3	w	17/19 (90%)	15 (88%)	1 (6%)	1 (6%)	1	18
All	All	470/557 (84%)	397 (84%)	54 (12%)	19 (4%)	5	26

All (19) Ramachandran outliers are listed below:

Mol	Chain	Res	Type
1	1	205	ARG
1	1	287	SER
1	1	288	ASN
2	2	8	VAL
1	1	239	LEU
2	2	27	LYS
2	2	44	PHE
2	2	66	VAL
1	1	385	SER
1	1	177	SER
1	1	238	ASN
1	1	261	PHE
1	1	448	LEU
2	2	49	PHE
1	1	345	LEU
3	w	13	LEU
1	1	176	GLY
1	1	202	ASN
1	1	211	GLY

5.3.2 Protein sidechains [i](#)

In the following table, the Percentiles column shows the percent sidechain outliers of the chain as a percentile score with respect to all PDB entries followed by that with respect to all EM entries.

The Analysed column shows the number of residues for which the sidechain conformation was analysed, and the total number of residues.

Mol	Chain	Analysed	Rotameric	Outliers	Percentiles	
1	1	339/398 (85%)	315 (93%)	24 (7%)	14	48
2	2	53/53 (100%)	49 (92%)	4 (8%)	13	45
3	w	18/18 (100%)	17 (94%)	1 (6%)	21	56

Continued on next page...

Continued from previous page...

Mol	Chain	Analysed	Rotameric	Outliers	Percentiles	
All	All	410/469 (87%)	381 (93%)	29 (7%)	18	48

All (29) residues with a non-rotameric sidechain are listed below:

Mol	Chain	Res	Type
1	1	28	PHE
1	1	117	LYS
1	1	188	CYS
1	1	199	THR
1	1	205	ARG
1	1	207	MET
1	1	226	LYS
1	1	239	LEU
1	1	240	PRO
1	1	252	PHE
1	1	268	LYS
1	1	271	ARG
1	1	275	GLN
1	1	290	PRO
1	1	294	GLN
1	1	346	SER
1	1	355	LEU
1	1	389	ASP
1	1	393	GLN
1	1	405	ARG
1	1	413	LEU
1	1	415	ARG
1	1	418	PRO
1	1	456	GLN
2	2	8	VAL
2	2	21	LEU
2	2	32	GLU
2	2	36	ILE
3	w	24	LEU

Sometimes sidechains can be flipped to improve hydrogen bonding and reduce clashes. All (3) such sidechains are listed below:

Mol	Chain	Res	Type
1	1	218	HIS
1	1	404	HIS
1	1	414	ASN

5.3.3 RNA [i](#)

There are no RNA molecules in this entry.

5.4 Non-standard residues in protein, DNA, RNA chains [i](#)

There are no non-standard protein/DNA/RNA residues in this entry.

5.5 Carbohydrates [i](#)

There are no monosaccharides in this entry.

5.6 Ligand geometry [i](#)

There are no ligands in this entry.

5.7 Other polymers [i](#)

There are no such residues in this entry.

5.8 Polymer linkage issues [i](#)

The following chains have linkage breaks:

Mol	Chain	Number of breaks
1	1	1

All chain breaks are listed below:

Model	Chain	Residue-1	Atom-1	Residue-2	Atom-2	Distance (Å)
1	1	267:ILE	C	268:LYS	N	1.66

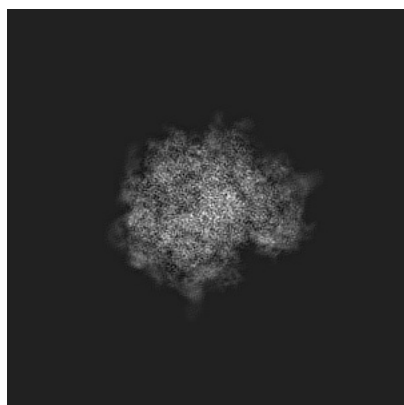
6 Map visualisation [i](#)

This section contains visualisations of the EMDB entry EMD-3245. These allow visual inspection of the internal detail of the map and identification of artifacts.

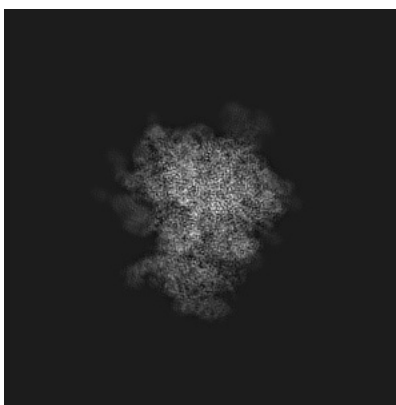
No raw map or half-maps were deposited for this entry and therefore no images, graphs, etc. pertaining to the raw map can be shown.

6.1 Orthogonal projections [i](#)

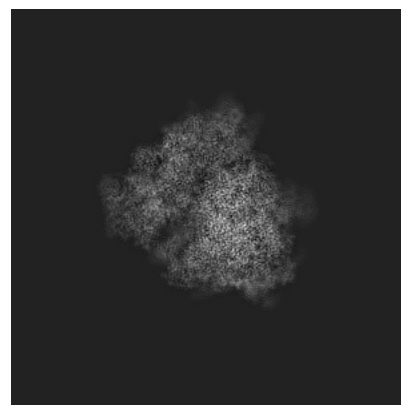
6.1.1 Primary map



X



Y

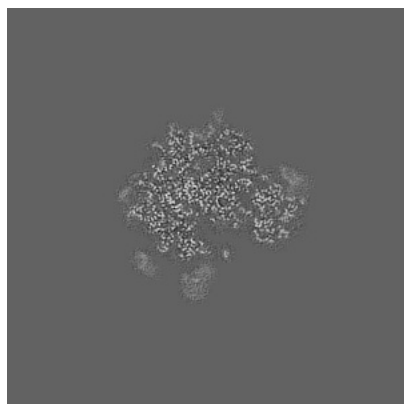


Z

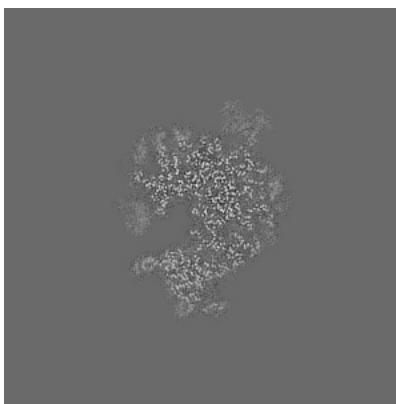
The images above show the map projected in three orthogonal directions.

6.2 Central slices [i](#)

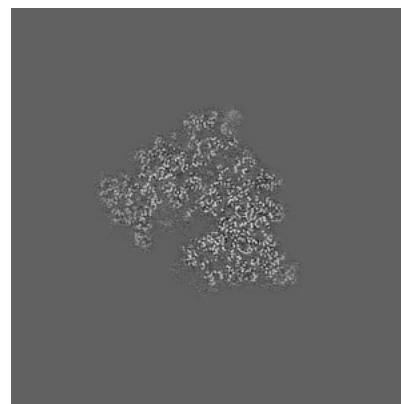
6.2.1 Primary map



X Index: 210



Y Index: 210

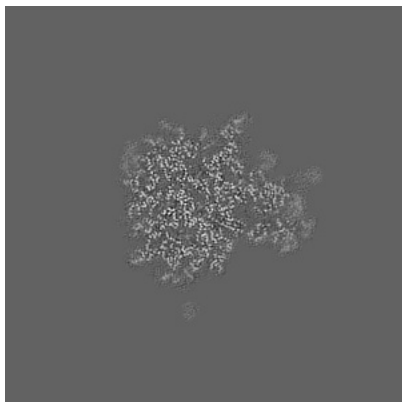


Z Index: 210

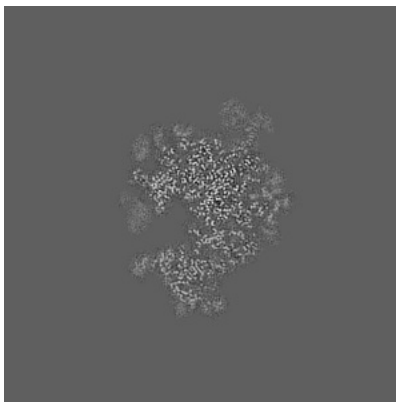
The images above show central slices of the map in three orthogonal directions.

6.3 Largest variance slices [i](#)

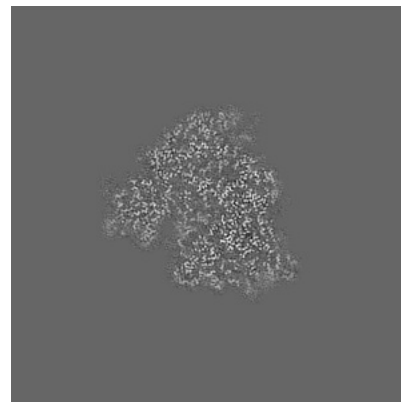
6.3.1 Primary map



X Index: 229



Y Index: 212



Z Index: 201

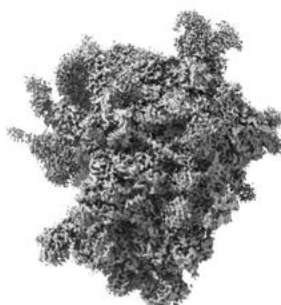
The images above show the largest variance slices of the map in three orthogonal directions.

6.4 Orthogonal surface views [i](#)

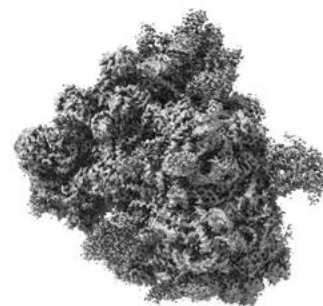
6.4.1 Primary map



X



Y



Z

The images above show the 3D surface view of the map at the recommended contour level 0.07. These images, in conjunction with the slice images, may facilitate assessment of whether an appropriate contour level has been provided.

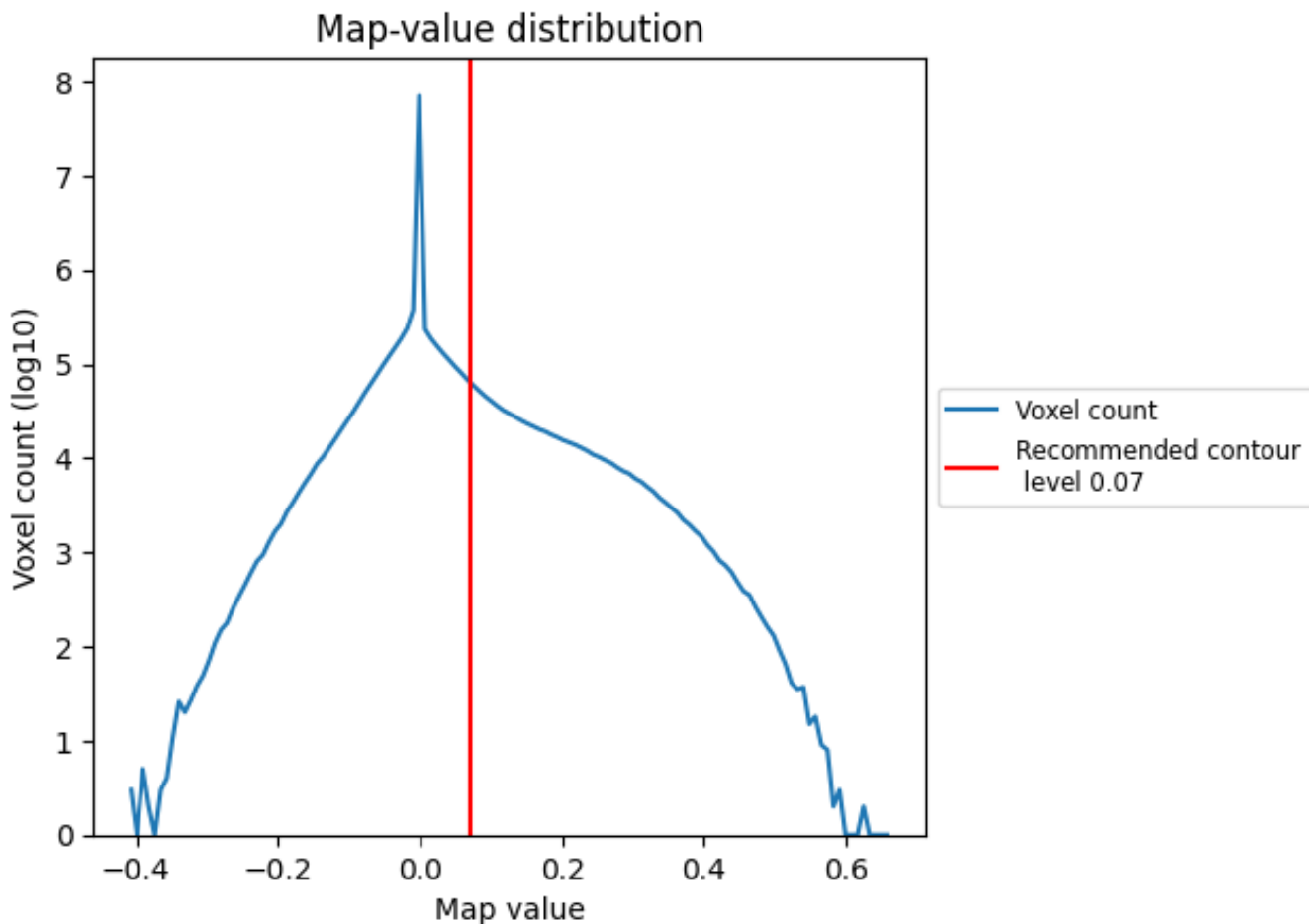
6.5 Mask visualisation

This section was not generated. No masks/segmentation were deposited.

7 Map analysis [i](#)

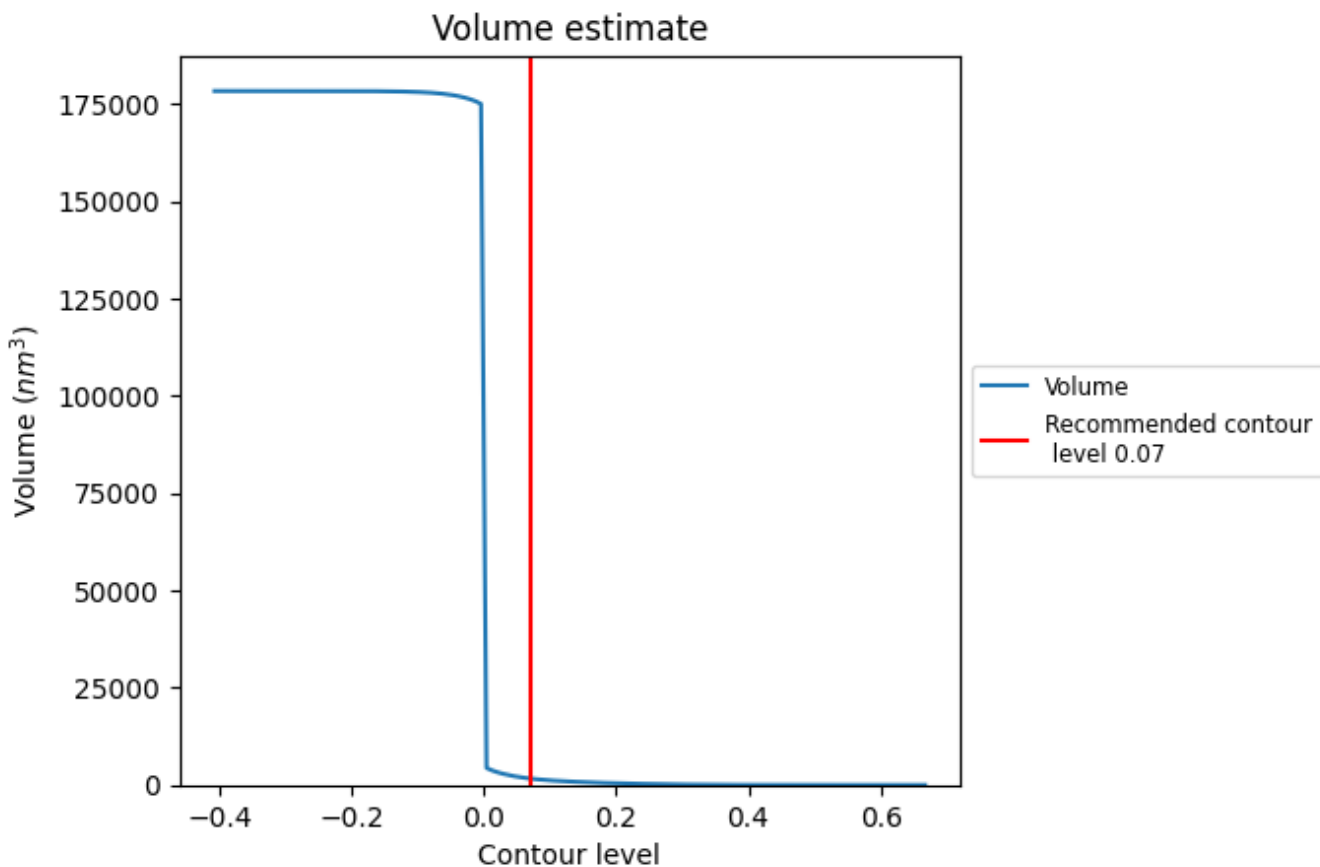
This section contains the results of statistical analysis of the map.

7.1 Map-value distribution [i](#)



The map-value distribution is plotted in 128 intervals along the x-axis. The y-axis is logarithmic. A spike in this graph at zero usually indicates that the volume has been masked.

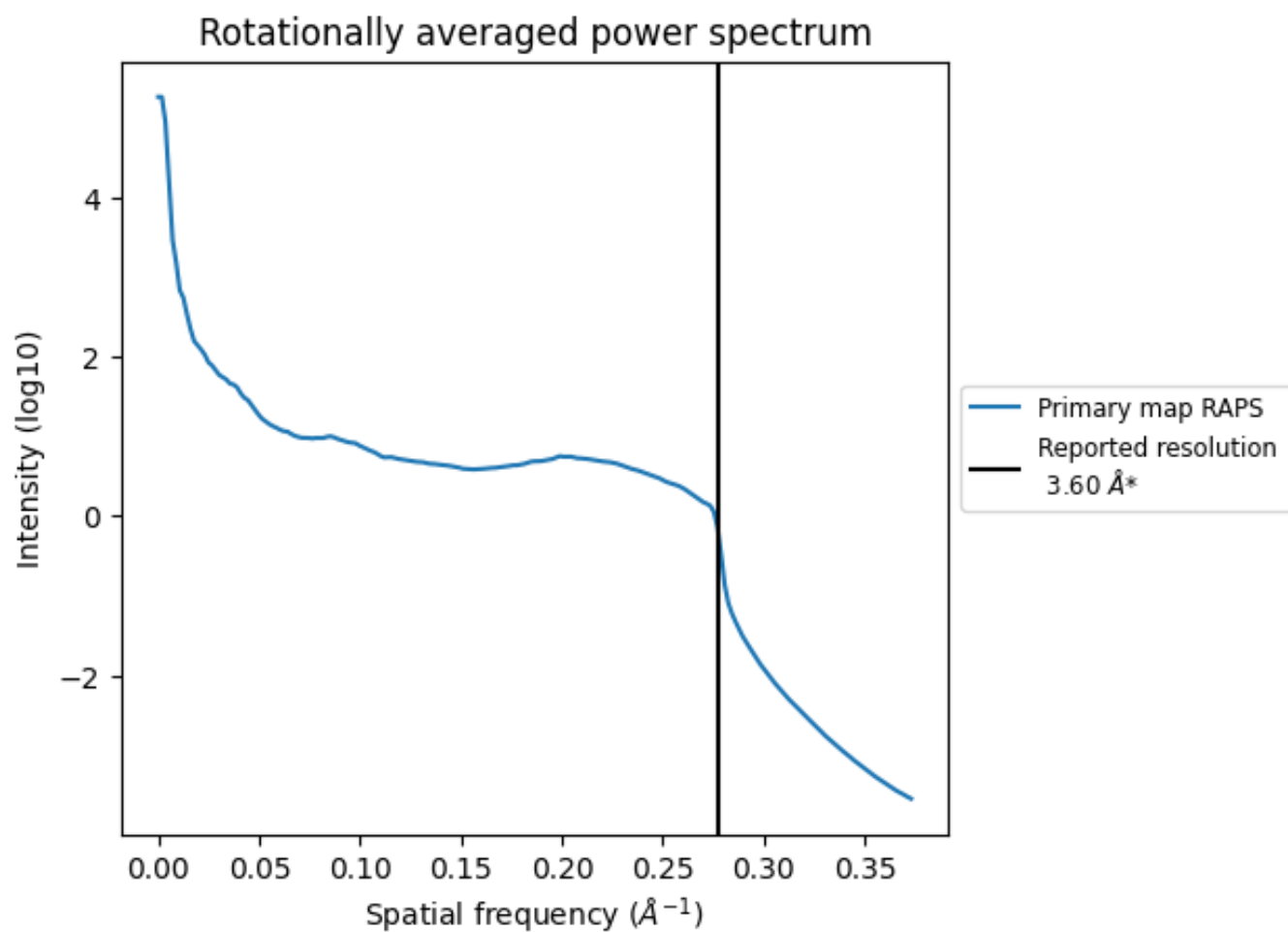
7.2 Volume estimate [i](#)



The volume at the recommended contour level is 1648 nm^3 ; this corresponds to an approximate mass of 1489 kDa.

The volume estimate graph shows how the enclosed volume varies with the contour level. The recommended contour level is shown as a vertical line and the intersection between the line and the curve gives the volume of the enclosed surface at the given level.

7.3 Rotationally averaged power spectrum [i](#)



*Reported resolution corresponds to spatial frequency of 0.278 Å⁻¹

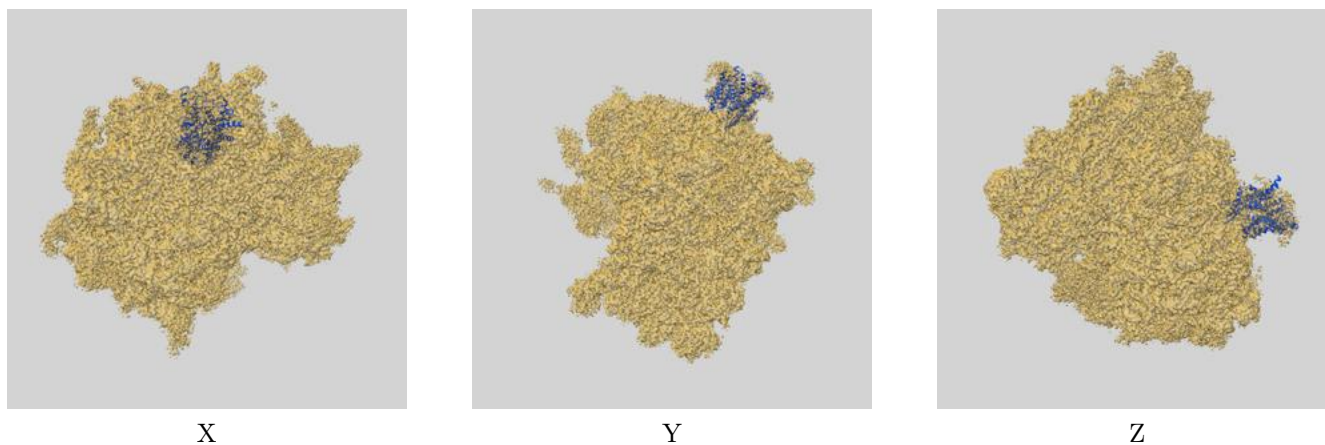
8 Fourier-Shell correlation

This section was not generated. No FSC curve or half-maps provided.

9 Map-model fit [i](#)

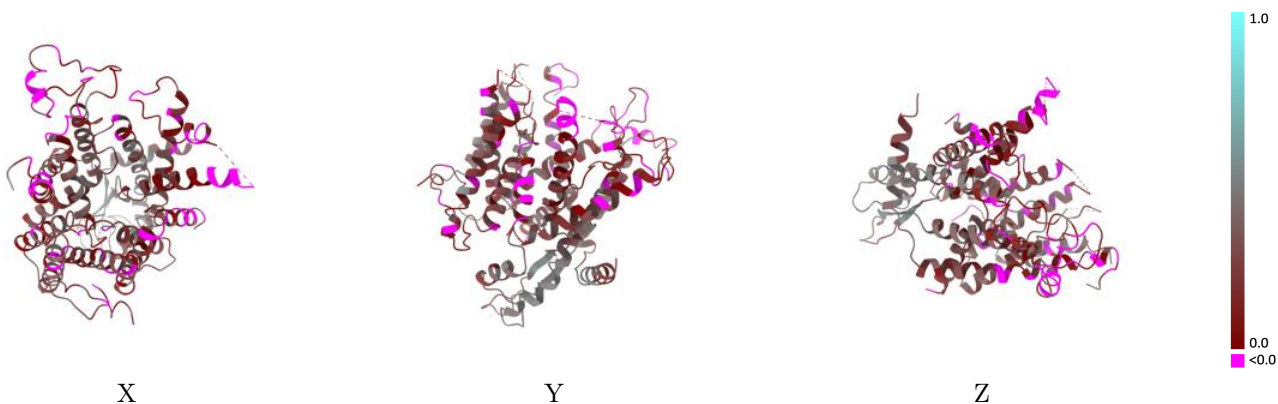
This section contains information regarding the fit between EMDB map EMD-3245 and PDB model 3JC2. Per-residue inclusion information can be found in section 3 on page 4.

9.1 Map-model overlay [i](#)



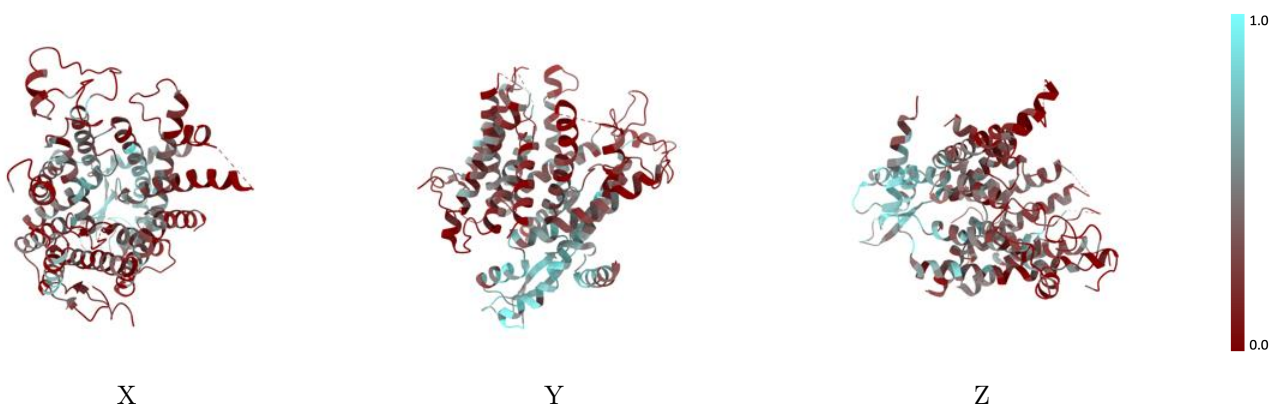
The images above show the 3D surface view of the map at the recommended contour level 0.07 at 50% transparency in yellow overlaid with a ribbon representation of the model coloured in blue. These images allow for the visual assessment of the quality of fit between the atomic model and the map.

9.2 Q-score mapped to coordinate model [i](#)



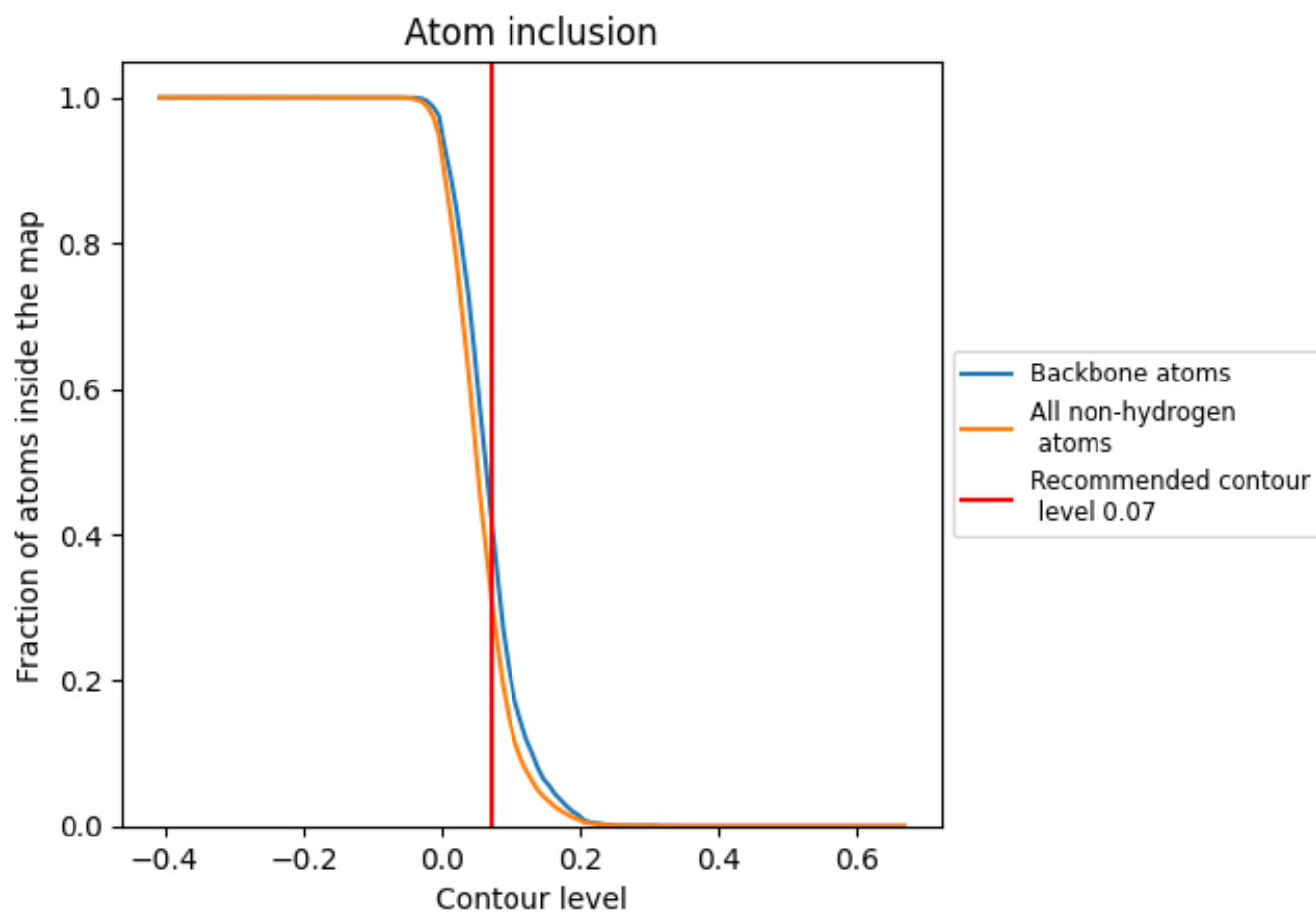
The images above show the model with each residue coloured according to its Q-score. This shows their resolvability in the map with higher Q-score values reflecting better resolvability. Please note: Q-score is calculating the resolvability of atoms, and thus high values are only expected at resolutions at which atoms can be resolved. Low Q-score values may therefore be expected for many entries.

9.3 Atom inclusion mapped to coordinate model [i](#)



The images above show the model with each residue coloured according to its atom inclusion. This shows to what extent they are inside the map at the recommended contour level (0.07).











9.4 Atom inclusion [i](#)



At the recommended contour level, 43% of all backbone atoms, 32% of all non-hydrogen atoms, are inside the map.

9.5 Map-model fit summary [i](#)

The table lists the average atom inclusion at the recommended contour level (0.07) and Q-score for the entire model and for each chain.

Chain	Atom inclusion	Q-score
All	 0.3203	 0.2190
1	 0.3241	 0.2200
2	 0.3663	 0.2270
3	 0.2313	 0.2500
w	 0.1786	 0.1460

