



# Full wwPDB X-ray Structure Validation Report ⓘ

Mar 8, 2018 – 05:18 pm GMT

PDB ID : 5JCB  
Title : Microtubule depolymerizing agent podophyllotoxin derivative YJTSF1  
Authors : Guan, Z.; Zhao, W.; Yin, P.  
Deposited on : 2016-04-14  
Resolution : 2.30 Å(reported)

This is a Full wwPDB X-ray Structure Validation Report for a publicly released PDB entry.

We welcome your comments at [validation@mail.wwpdb.org](mailto:validation@mail.wwpdb.org)

A user guide is available at

<https://www.wwpdb.org/validation/2017/XrayValidationReportHelp>

with specific help available everywhere you see the ⓘ symbol.

---

The following versions of software and data (see [references ⓘ](#)) were used in the production of this report:

MolProbity : 4.02b-467  
Mogul : 1.7.3 (157068), CSD as539be (2018)  
Xtrriage (Phenix) : 1.13  
EDS : trunk30967  
Percentile statistics : 20171227.v01 (using entries in the PDB archive December 27th 2017)  
Refmac : 5.8.0158  
CCP4 : 7.0 (Gargrove)  
Ideal geometry (proteins) : Engh & Huber (2001)  
Ideal geometry (DNA, RNA) : Parkinson et al. (1996)  
Validation Pipeline (wwPDB-VP) : trunk30967

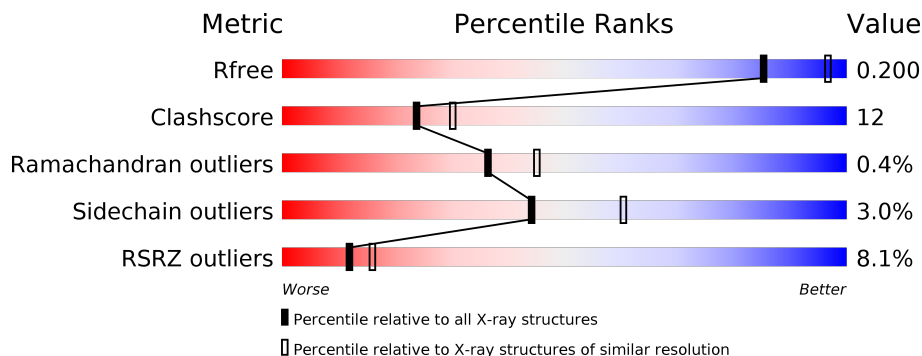
# 1 Overall quality at a glance

The following experimental techniques were used to determine the structure:

*X-RAY DIFFRACTION*

The reported resolution of this entry is 2.30 Å.

Percentile scores (ranging between 0-100) for global validation metrics of the entry are shown in the following graphic. The table shows the number of entries on which the scores are based.



Metric	Whole archive (#Entries)	Similar resolution (#Entries, resolution range(Å))
$R_{free}$	111664	4477 (2.30-2.30)
Clashscore	122126	5072 (2.30-2.30)
Ramachandran outliers	120053	5022 (2.30-2.30)
Sidechain outliers	120020	5021 (2.30-2.30)
RSRZ outliers	108989	4374 (2.30-2.30)

The table below summarises the geometric issues observed across the polymeric chains and their fit to the electron density. The red, orange, yellow and green segments on the lower bar indicate the fraction of residues that contain outliers for  $\geq 3$ , 2, 1 and 0 types of geometric quality criteria. A grey segment represents the fraction of residues that are not modelled. The numeric value for each fraction is indicated below the corresponding segment, with a dot representing fractions  $\leq 5\%$ . The upper red bar (where present) indicates the fraction of residues that have poor fit to the electron density. The numeric value is given above the bar.

Mol	Chain	Length	Quality of chain
1	A	451	 3% 79% 17%
1	C	451	 2% 77% 20%
2	B	445	 5% 73% 20% 5%
2	D	445	 10% 70% 23% 5%
3	E	152	 6% 66% 13% 1% 20%
4	F	388	 19% 56% 21% 4% 20%

The following table lists non-polymeric compounds, carbohydrate monomers and non-standard residues in protein, DNA, RNA chains that are outliers for geometric or electron-density-fit criteria:

<b>Mol</b>	<b>Type</b>	<b>Chain</b>	<b>Res</b>	<b>Chirality</b>	<b>Geometry</b>	<b>Clashes</b>	<b>Electron density</b>
13	NV4	D	507	-	-	X	-
7	GOL	C	501	-	-	X	X
7	GOL	C	504	-	-	X	-
8	IMD	A	505	-	-	X	-

## 2 Entry composition [i](#)

There are 16 unique types of molecules in this entry. The entry contains 18127 atoms, of which 13 are hydrogens and 0 are deuteriums.

In the tables below, the ZeroOcc column contains the number of atoms modelled with zero occupancy, the AltConf column contains the number of residues with at least one atom in alternate conformation and the Trace column contains the number of residues modelled with at most 2 atoms.

- Molecule 1 is a protein called Tubulin alpha-1B chain.

Mol	Chain	Residues	Atoms					ZeroOcc	AltConf	Trace
			Total	C	N	O	S			
1	A	439	3482	2213	585	659	25	0	12	0
1	C	440	3481	2204	587	667	23	0	9	0

- Molecule 2 is a protein called Tubulin beta chain.

Mol	Chain	Residues	Atoms					ZeroOcc	AltConf	Trace
			Total	C	N	O	S			
2	B	423	3382	2129	570	657	26	0	11	0
2	D	418	3316	2089	561	638	28	0	5	0

- Molecule 3 is a protein called Stathmin.

Mol	Chain	Residues	Atoms					ZeroOcc	AltConf	Trace
			Total	C	N	O	S			
3	E	121	1010	624	182	198	6	0	2	0

There are 11 discrepancies between the modelled and reference sequences:

Chain	Residue	Modelled	Actual	Comment	Reference
E	4	ALA	-	expression tag	UNP F2Z508
E	146	LEU	-	expression tag	UNP F2Z508
E	147	GLU	-	expression tag	UNP F2Z508
E	148	HIS	-	expression tag	UNP F2Z508
E	149	HIS	-	expression tag	UNP F2Z508
E	150	HIS	-	expression tag	UNP F2Z508
E	151	HIS	-	expression tag	UNP F2Z508
E	152	HIS	-	expression tag	UNP F2Z508
E	153	HIS	-	expression tag	UNP F2Z508
E	154	HIS	-	expression tag	UNP F2Z508

*Continued on next page...*

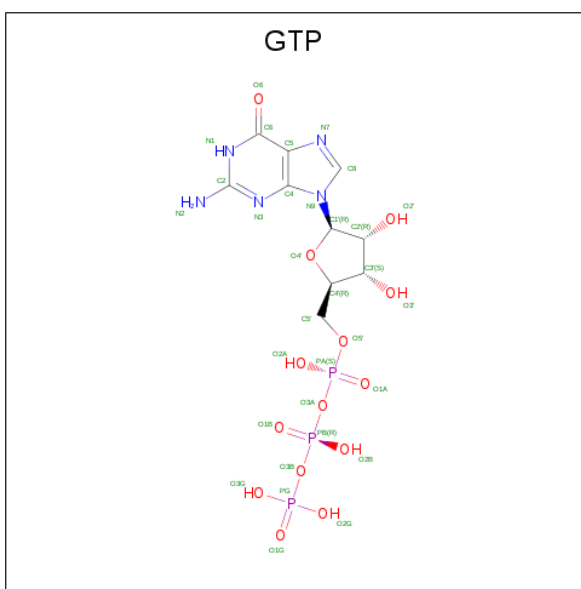
Continued from previous page...

Chain	Residue	Modelled	Actual	Comment	Reference
E	155	HIS	-	expression tag	UNP F2Z508

- Molecule 4 is a protein called Tubulin-Tyrosine Ligase.

Mol	Chain	Residues	Atoms					ZeroOcc	AltConf	Trace
			Total	C	N	O	S			
4	F	312	2577	1673	428	462	14	0	4	0

- Molecule 5 is GUANOSINE-5'-TRIPHOSPHATE (three-letter code: GTP) (formula:  $C_{10}H_{16}N_5O_{14}P_3$ ).



Mol	Chain	Residues	Atoms					ZeroOcc	AltConf
			Total	C	N	O	P		
5	A	1	32	10	5	14	3	0	0
5	C	1	32	10	5	14	3	0	0

- Molecule 6 is MAGNESIUM ION (three-letter code: MG) (formula: Mg).

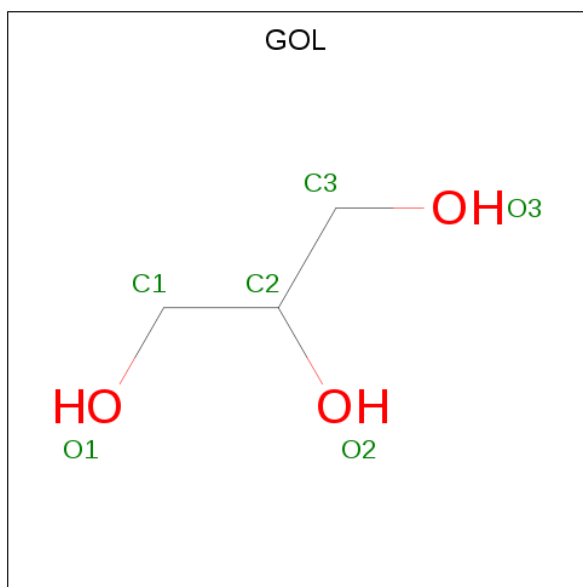
Mol	Chain	Residues	Atoms		ZeroOcc	AltConf
6	B	1	Total	Mg	0	0
			1	1		
6	A	2	Total	Mg	0	0
			2	2		
6	D	2	Total	Mg	0	0
			2	2		

Continued on next page...

Continued from previous page...

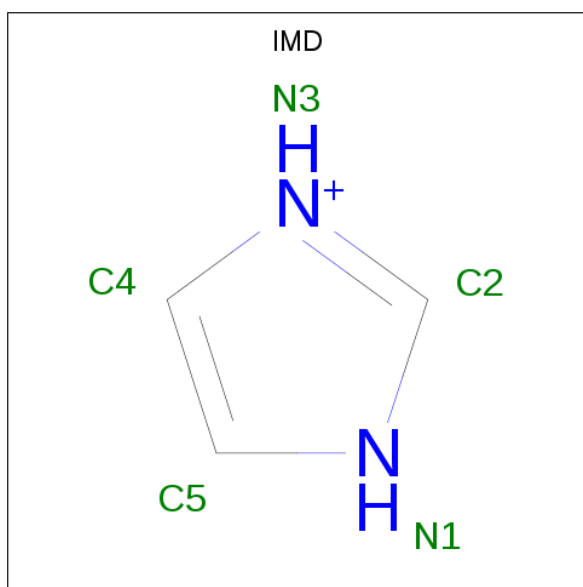
Mol	Chain	Residues	Atoms	ZeroOcc	AltConf
6	C	1	Total Mg 1 1	0	0
6	F	1	Total Mg 1 1	0	0

- Molecule 7 is GLYCEROL (three-letter code: GOL) (formula: C<sub>3</sub>H<sub>8</sub>O<sub>3</sub>).



Mol	Chain	Residues	Atoms	ZeroOcc	AltConf
7	A	1	Total C O 6 3 3	0	0
7	A	1	Total C O 6 3 3	0	0
7	C	1	Total C O 6 3 3	0	0
7	C	1	Total C O 6 3 3	0	0
7	C	1	Total C H O 14 3 8 3	0	0
7	D	1	Total C O 6 3 3	0	0
7	D	1	Total C O 6 3 3	0	0
7	D	1	Total C O 6 3 3	0	0

- Molecule 8 is IMIDAZOLE (three-letter code: IMD) (formula: C<sub>3</sub>H<sub>5</sub>N<sub>2</sub>).

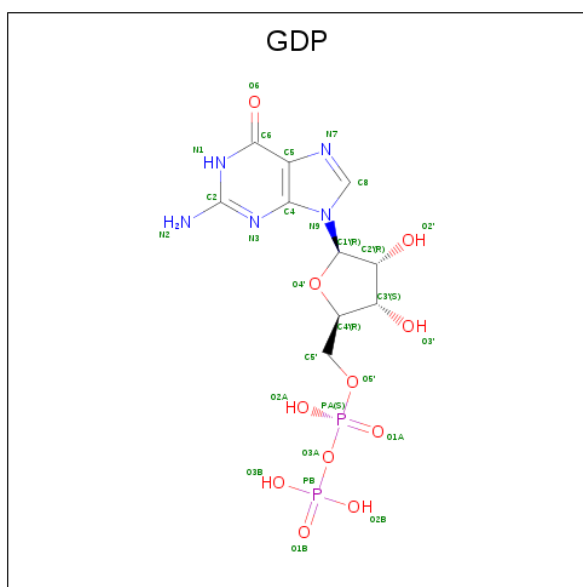


Mol	Chain	Residues	Atoms	ZeroOcc	AltConf
8	A	1	Total C H N 10 3 5 2	0	0
8	C	1	Total C N 5 3 2	0	0

- Molecule 9 is CALCIUM ION (three-letter code: CA) (formula: Ca).

Mol	Chain	Residues	Atoms	ZeroOcc	AltConf
9	A	1	Total Ca 1 1	0	0
9	C	1	Total Ca 1 1	0	0

- Molecule 10 is GUANOSINE-5'-DIPHOSPHATE (three-letter code: GDP) (formula: C<sub>10</sub>H<sub>15</sub>N<sub>5</sub>O<sub>11</sub>P<sub>2</sub>).



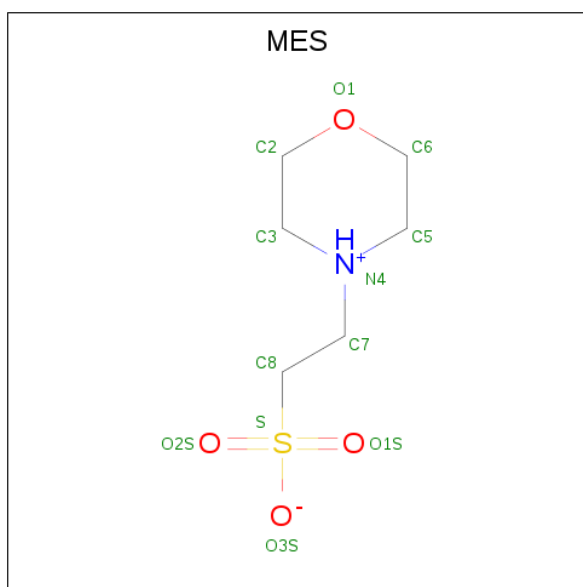
Mol	Chain	Residues	Atoms				ZeroOcc	AltConf	
10	B	1	Total	C	N	O	P	0	0
			28	10	5	11	2		
10	D	1	Total	C	N	O	P	0	0
			28	10	5	11	2		

- Molecule 11 is SODIUM ION (three-letter code: NA) (formula: Na).

Mol	Chain	Residues	Atoms		ZeroOcc	AltConf
11	B	1	Total	Na	0	0
			1	1		
11	C	1	Total	Na	0	0
			1	1		

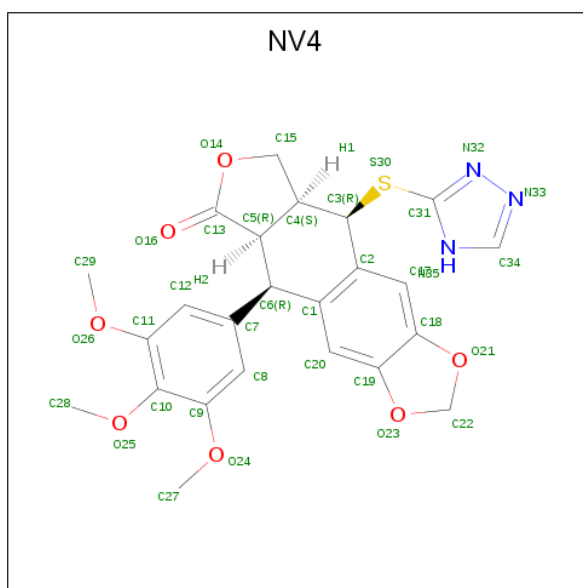
- Molecule 12 is 2-(N-MORPHOLINO)-ETHANESULFONIC ACID (three-letter code: MES) (formula: C<sub>6</sub>H<sub>13</sub>NO<sub>4</sub>S).





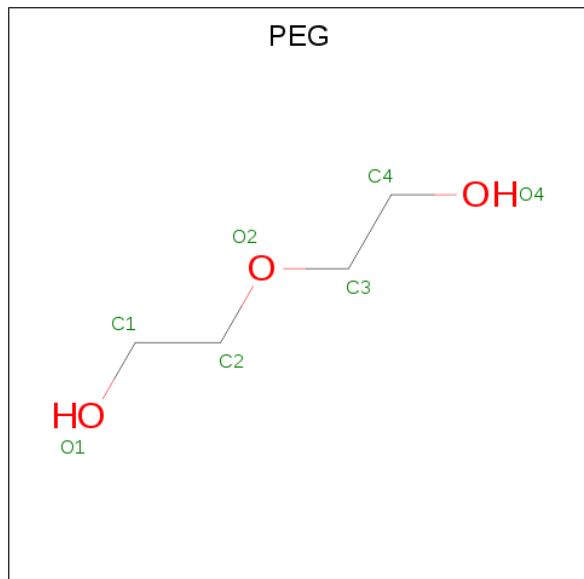
Mol	Chain	Residues	Atoms					ZeroOcc	AltConf
			Total	C	N	O	S		
12	B	1	12	6	1	4	1	0	0

- Molecule 13 is (5R,5aR,8aS,9R)-9-[(4H-1,2,4-triazol-3-yl)sulfanyl]-5-(3,4,5-trimethoxyphenyl)-5,8,8a,9-tetrahydro-2H-furo[3',4':6,7]naphtho[2,3-d][1,3]dioxol-6(5aH)-one (three-letter code: NV4) (formula: C<sub>24</sub>H<sub>23</sub>N<sub>3</sub>O<sub>7</sub>S).



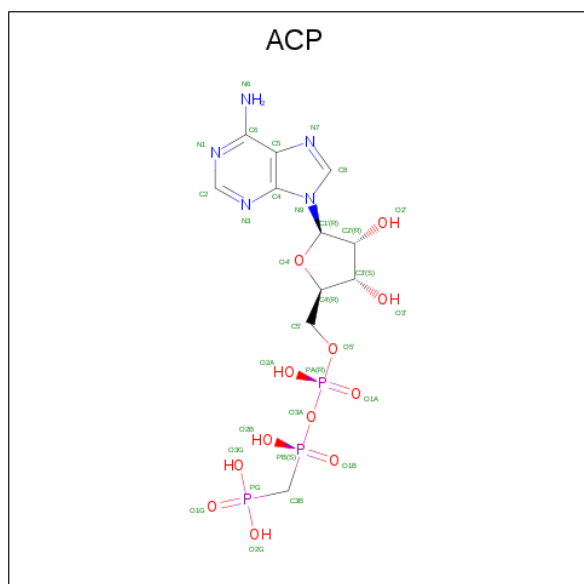
Mol	Chain	Residues	Atoms					ZeroOcc	AltConf
			Total	C	N	O	S		
13	B	1	35	24	3	7	1	0	0
13	D	1	35	24	3	7	1	0	0

- Molecule 14 is DI(HYDROXYETHYL)ETHER (three-letter code: PEG) (formula:  $C_4H_{10}O_3$ ).



Mol	Chain	Residues	Atoms			ZeroOcc	AltConf
14	C	1	Total	C	O	0	0
			7	4	3		

- Molecule 15 is PHOSPHOMETHYLPHOSPHONIC ACID ADENYLATE ESTER (three-letter code: ACP) (formula:  $C_{11}H_{18}N_5O_{12}P_3$ ).



Mol	Chain	Residues	Atoms					ZeroOcc	AltConf
15	F	1	Total	C	N	O	P	0	0
			31	11	5	12	3		

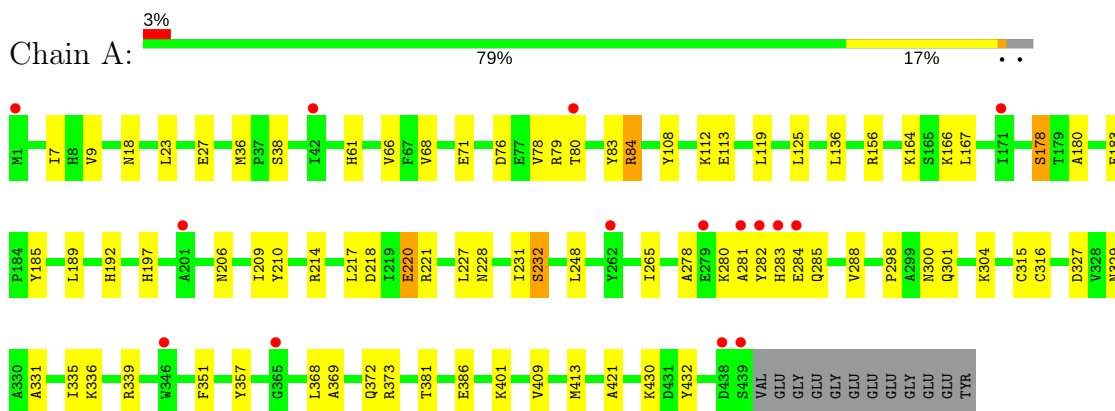
- Molecule 16 is water.

<b>Mol</b>	<b>Chain</b>	<b>Residues</b>	<b>Atoms</b>		<b>ZeroOcc</b>	<b>AltConf</b>
16	A	115	Total 115	O 115	0	0
16	B	84	Total 84	O 84	0	0
16	C	199	Total 199	O 199	0	0
16	D	66	Total 66	O 66	0	0
16	E	28	Total 28	O 28	0	0
16	F	65	Total 65	O 65	0	0

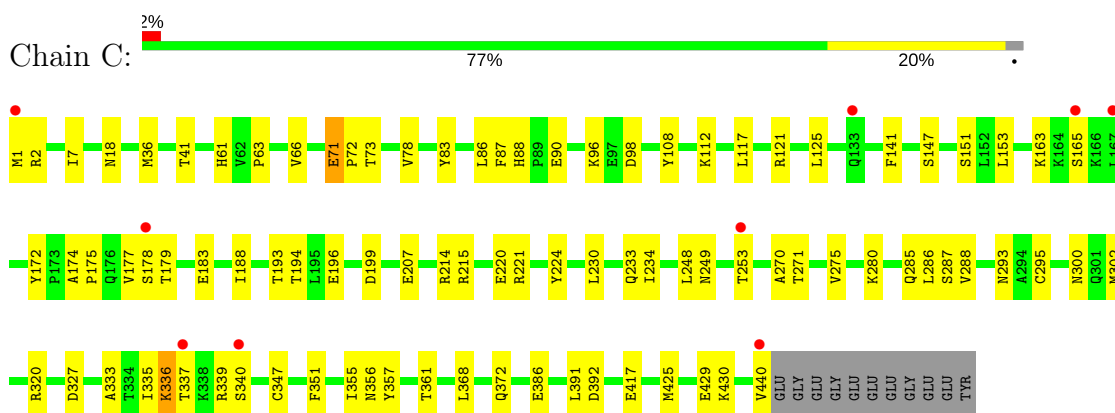
### 3 Residue-property plots [i](#)

These plots are drawn for all protein, RNA and DNA chains in the entry. The first graphic for a chain summarises the proportions of the various outlier classes displayed in the second graphic. The second graphic shows the sequence view annotated by issues in geometry and electron density. Residues are color-coded according to the number of geometric quality criteria for which they contain at least one outlier: green = 0, yellow = 1, orange = 2 and red = 3 or more. A red dot above a residue indicates a poor fit to the electron density ( $RSRZ > 2$ ). Stretches of 2 or more consecutive residues without any outlier are shown as a green connector. Residues present in the sample, but not in the model, are shown in grey.

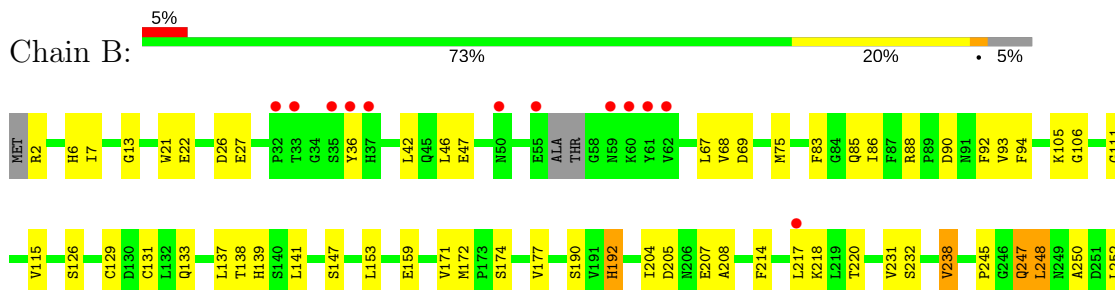
- Molecule 1: Tubulin alpha-1B chain

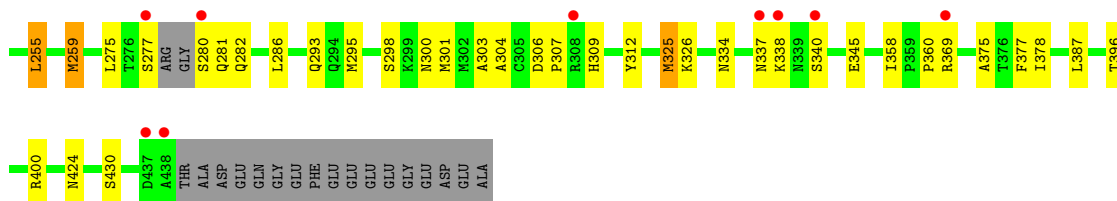


- Molecule 1: Tubulin alpha-1B chain

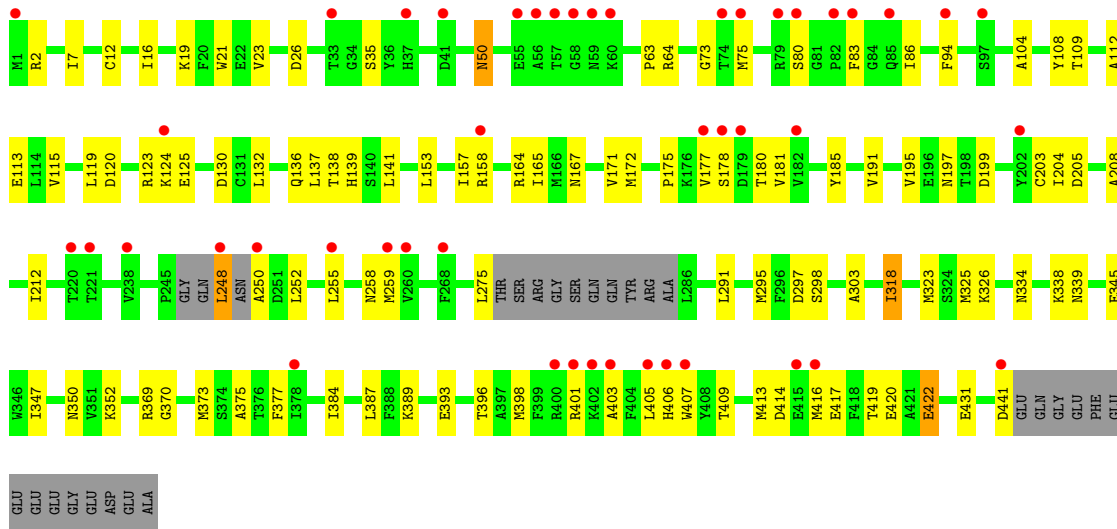


- Molecule 2: Tubulin beta chain

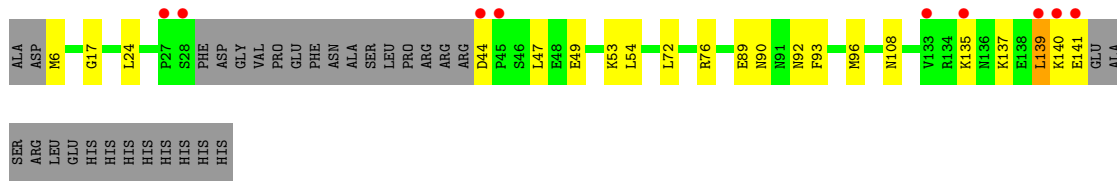




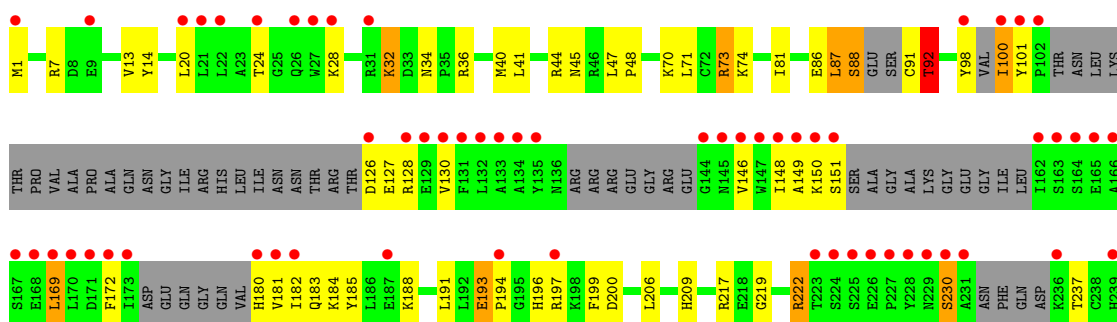
• Molecule 2: Tubulin beta chain



• Molecule 3: Stathmin



• Molecule 4: Tubulin-Tyrosine Ligase



I240	ASP	
T241	THR	
N242	GLY	
H243	GLN	
C244	LYS	
I245	THR	
Q246	SER	
K247	GLN	
E248	PRO	
Y249	THR	
SER	S373	
LYS	I374	
ASN		
Y253	K377	
G254	L378	
R255	LEU	
Y256	GLU	
E257	HIS	
F258	HIS	
G259	HIS	
F264	HIS	
L271	HIS	
A274	HIS	
L275	HIS	
S282		
C294		
I298		
L307		
S311		
E323		
E324		
L325		
I330		
N333		
G334		
Q340		
K341		
L342		
Y343		
G349		
V353		
F359		
P360		
L361		
A362		

## 4 Data and refinement statistics

Property	Value	Source
Space group	P 21 21 21	Depositor
Cell constants a, b, c, $\alpha$ , $\beta$ , $\gamma$	104.36Å 157.25Å 179.63Å 90.00° 90.00° 90.00°	Depositor
Resolution (Å)	47.64 – 2.30 47.64 – 2.30	Depositor EDS
% Data completeness (in resolution range)	99.8 (47.64-2.30) 99.8 (47.64-2.30)	Depositor EDS
$R_{merge}$	(Not available)	Depositor
$R_{sym}$	(Not available)	Depositor
$\langle I/\sigma(I) \rangle$ <sup>1</sup>	2.15 (at 2.29Å)	Xtrriage
Refinement program	PHENIX (1.10.1_2155)	Depositor
R, $R_{free}$	0.181 , 0.200 0.181 , 0.200	Depositor DCC
$R_{free}$ test set	6500 reflections (4.95%)	wwPDB-VP
Wilson B-factor (Å <sup>2</sup> )	35.7	Xtrriage
Anisotropy	0.079	Xtrriage
Bulk solvent $k_{sol}$ (e/Å <sup>3</sup> ), $B_{sol}$ (Å <sup>2</sup> )	0.35 , 50.8	EDS
L-test for twinning <sup>2</sup>	$\langle  L  \rangle = 0.48$ , $\langle L^2 \rangle = 0.31$	Xtrriage
Estimated twinning fraction	No twinning to report.	Xtrriage
$F_o, F_c$ correlation	0.95	EDS
Total number of atoms	18127	wwPDB-VP
Average B, all atoms (Å <sup>2</sup> )	48.0	wwPDB-VP

Xtrriage's analysis on translational NCS is as follows: *The largest off-origin peak in the Patterson function is 2.23% of the height of the origin peak. No significant pseudotranslation is detected.*

<sup>1</sup>Intensities estimated from amplitudes.

<sup>2</sup>Theoretical values of  $\langle |L| \rangle$ ,  $\langle L^2 \rangle$  for acentric reflections are 0.5, 0.333 respectively for untwinned datasets, and 0.375, 0.2 for perfectly twinned datasets.

## 5 Model quality [i](#)

### 5.1 Standard geometry [i](#)

Bond lengths and bond angles in the following residue types are not validated in this section: GDP, GOL, MG, NV4, IMD, NA, CA, GTP, ACP, MES, PEG

The Z score for a bond length (or angle) is the number of standard deviations the observed value is removed from the expected value. A bond length (or angle) with  $|Z| > 5$  is considered an outlier worth inspection. RMSZ is the root-mean-square of all Z scores of the bond lengths (or angles).

Mol	Chain	Bond lengths		Bond angles	
		RMSZ	# $ Z  > 5$	RMSZ	# $ Z  > 5$
1	A	0.41	0/3596	0.56	0/4883
1	C	0.51	1/3583 (0.0%)	0.60	0/4866
2	B	0.42	0/3485	0.57	0/4718
2	D	0.37	0/3399	0.53	0/4602
3	E	0.38	0/1024	0.51	0/1358
4	F	0.42	0/2644	0.53	0/3566
All	All	0.43	1/17731 (0.0%)	0.56	0/23993

All (1) bond length outliers are listed below:

Mol	Chain	Res	Type	Atoms	Z	Observed(Å)	Ideal(Å)
1	C	295	CYS	CB-SG	-6.82	1.70	1.82

There are no bond angle outliers.

There are no chirality outliers.

There are no planarity outliers.

### 5.2 Too-close contacts [i](#)

In the following table, the Non-H and H(model) columns list the number of non-hydrogen atoms and hydrogen atoms in the chain respectively. The H(added) column lists the number of hydrogen atoms added and optimized by MolProbity. The Clashes column lists the number of clashes within the asymmetric unit, whereas Symm-Clashes lists symmetry related clashes.

Mol	Chain	Non-H	H(model)	H(added)	Clashes	Symm-Clashes
1	A	3482	0	3434	66	0
1	C	3481	0	3401	82	0
2	B	3382	0	3270	82	0
2	D	3316	0	3213	81	0

*Continued on next page...*



*Continued from previous page...*

Mol	Chain	Non-H	H(model)	H(added)	Clashes	Symm-Clashes
3	E	1010	0	1033	25	0
4	F	2577	0	2576	100	0
5	A	32	0	12	0	0
5	C	32	0	12	0	0
6	A	2	0	0	0	0
6	B	1	0	0	0	0
6	C	1	0	0	0	0
6	D	2	0	0	0	0
6	F	1	0	0	0	0
7	A	12	0	16	2	0
7	C	18	8	24	10	0
7	D	18	0	23	2	0
8	A	5	5	5	4	0
8	C	5	0	5	0	0
9	A	1	0	0	0	0
9	C	1	0	0	0	0
10	B	28	0	12	0	0
10	D	28	0	12	1	0
11	B	1	0	0	0	0
11	C	1	0	0	0	0
12	B	12	0	12	0	0
13	B	35	0	0	3	0
13	D	35	0	0	9	0
14	C	7	0	10	0	0
15	F	31	0	13	3	0
16	A	115	0	0	10	1
16	B	84	0	0	4	0
16	C	199	0	0	17	1
16	D	66	0	0	7	0
16	E	28	0	0	6	0
16	F	65	0	0	9	0
All	All	18114	13	17083	416	1

The all-atom clashscore is defined as the number of clashes found per 1000 atoms (including hydrogen atoms). The all-atom clashscore for this structure is 12.

All (416) close contacts within the same asymmetric unit are listed below, sorted by their clash magnitude.

Atom-1	Atom-2	Interatomic distance (Å)	Clash overlap (Å)
1:C:221:ARG:HD2	2:D:325:MET:HB3	1.29	1.09
4:F:100:ILE:HD11	4:F:127:GLU:H	1.15	1.07

*Continued on next page...*

*Continued from previous page...*

Atom-1	Atom-2	Interatomic distance (Å)	Clash overlap (Å)
1:C:220:GLU:HB3	2:D:326:LYS:HE3	1.46	0.98
2:B:27:GLU:HA	2:B:369:ARG:HH22	1.27	0.98
4:F:32:LYS:HD2	4:F:32:LYS:H	1.24	0.98
1:A:209[B]:ILE:HD13	1:A:231:ILE:HD11	1.45	0.98
4:F:254:GLY:O	16:F:501:HOH:O	1.82	0.97
1:C:417:GLU:OE1	16:C:601:HOH:O	1.84	0.94
4:F:91:CYS:O	4:F:92:THR:HB	1.67	0.92
2:B:220:THR:O	16:B:601:HOH:O	1.85	0.92
2:D:175:PRO:HA	2:D:178:SER:HB2	1.51	0.92
2:D:370:GLY:O	16:D:602:HOH:O	1.86	0.91
4:F:100:ILE:HD11	4:F:127:GLU:N	1.84	0.91
1:C:98:ASP:OD1	16:C:602:HOH:O	1.87	0.90
2:D:180:THR:HG22	2:D:181:VAL:H	1.37	0.90
2:D:431:GLU:OE2	16:D:603:HOH:O	1.88	0.89
4:F:73:ARG:HD2	4:F:74:LYS:H	1.35	0.89
1:C:386:GLU:OE2	16:C:603:HOH:O	1.92	0.87
2:B:27:GLU:HA	2:B:369:ARG:NH2	1.88	0.87
3:E:53:LYS:O	16:E:201:HOH:O	1.92	0.87
4:F:247:LYS:HZ1	4:F:259:GLY:HA2	1.39	0.87
4:F:100:ILE:CD1	4:F:127:GLU:H	1.90	0.83
4:F:169:LEU:HD13	4:F:172:PHE:HB3	1.59	0.83
2:B:275:LEU:HD11	2:B:300:ASN:HA	1.59	0.82
1:A:218:ASP:HB3	16:A:610:HOH:O	1.79	0.82
2:B:159:GLU:OE2	16:B:602:HOH:O	1.97	0.82
1:C:221:ARG:CD	2:D:325:MET:HB3	2.09	0.81
1:C:214:ARG:NH1	16:C:607:HOH:O	2.10	0.80
4:F:1:MET:SD	4:F:28:LYS:HD3	2.21	0.80
2:B:247:GLN:HG3	2:B:248:LEU:H	1.45	0.80
4:F:151:SER:OG	4:F:180:HIS:HA	1.82	0.79
1:C:41:THR:OG1	16:C:604:HOH:O	2.01	0.79
4:F:247:LYS:NZ	4:F:259:GLY:HA2	1.97	0.79
4:F:359:PHE:O	16:F:504:HOH:O	2.01	0.79
4:F:237:THR:HG21	4:F:249:TYR:HD1	1.48	0.78
2:D:389:LYS:NZ	16:D:604:HOH:O	2.16	0.77
2:B:42:LEU:HD12	2:B:42:LEU:H	1.50	0.76
2:B:247:GLN:O	16:B:603:HOH:O	2.02	0.76
1:C:249:ASN:OD1	1:C:356[A]:ASN:ND2	2.19	0.76
1:C:288:VAL:HG23	7:C:504:GOL:H2	1.67	0.76
4:F:150:LYS:HD2	4:F:151:SER:H	1.51	0.75
4:F:100:ILE:N	4:F:180:HIS:O	2.19	0.75
2:B:340:SER:HB3	4:F:34:ASN:HD21	1.50	0.75

*Continued on next page...*

*Continued from previous page...*

Atom-1	Atom-2	Interatomic distance (Å)	Clash overlap (Å)
4:F:200:ASP:OD1	4:F:222:ARG:NH2	2.18	0.75
7:A:507:GOL:O1	16:A:601:HOH:O	1.95	0.75
1:C:215:ARG:NH1	16:C:605:HOH:O	2.03	0.74
2:B:281:GLN:HG2	2:B:281:GLN:O	1.88	0.74
3:E:108[B]:ASN:OD1	16:E:202:HOH:O	2.06	0.73
2:B:75:MET:HE3	2:B:92:PHE:HD2	1.54	0.73
4:F:169:LEU:CD1	4:F:172:PHE:HB3	2.19	0.73
1:C:287:SER:HB2	7:C:504:GOL:H12	1.71	0.73
1:C:96:LYS:HE3	2:D:130:ASP:OD1	1.90	0.72
2:B:26:ASP:OD2	2:B:369:ARG:NE	2.21	0.72
4:F:237:THR:HG21	4:F:249:TYR:CD1	2.24	0.72
1:C:214:ARG:NE	16:C:607:HOH:O	2.12	0.71
4:F:73:ARG:HD2	4:F:74:LYS:N	2.05	0.71
4:F:334:GLY:O	16:F:505:HOH:O	2.08	0.70
1:C:18:ASN:OD1	16:C:606:HOH:O	2.09	0.70
1:C:163:LYS:HE2	3:E:93:PHE:CD2	2.27	0.69
2:D:441:ASP:N	16:D:601:HOH:O	1.86	0.69
1:A:288:VAL:H	8:A:505:IMD:HN1	1.41	0.69
4:F:32:LYS:HD2	4:F:32:LYS:N	2.04	0.68
4:F:87:LEU:O	4:F:88:SER:HB3	1.93	0.68
1:C:248:LEU:HD12	1:C:357:TYR:OH	1.93	0.68
1:A:228:ASN:O	1:A:232:SER:OG	2.10	0.68
1:C:88:HIS:HE1	1:C:90:GLU:HG3	1.57	0.68
1:C:215:ARG:HD2	16:C:605:HOH:O	1.95	0.67
1:A:221:ARG:HG2	2:B:325:MET:HG2	1.76	0.67
1:C:327:ASP:OD2	16:C:608:HOH:O	2.13	0.67
4:F:254:GLY:CA	16:F:501:HOH:O	2.42	0.67
2:D:370:GLY:C	16:D:602:HOH:O	2.26	0.67
1:A:336:LYS:HG3	3:E:24:LEU:HD13	1.77	0.67
1:C:221:ARG:HG2	1:C:221:ARG:O	1.93	0.66
1:A:209[B]:ILE:CD1	1:A:231:ILE:HD11	2.21	0.66
4:F:146:VAL:O	4:F:184:LYS:NZ	2.28	0.66
1:A:386:GLU:OE2	16:A:602:HOH:O	2.14	0.66
1:C:280:LYS:HD3	16:C:640:HOH:O	1.95	0.66
4:F:7:ARG:HD3	4:F:40:MET:HE3	1.77	0.66
2:B:340:SER:CB	4:F:34:ASN:HD21	2.08	0.65
2:D:416:MET:O	2:D:420:GLU:HG3	1.96	0.65
2:D:136:GLN:HA	2:D:167:ASN:O	1.97	0.65
4:F:127:GLU:HB2	4:F:130:VAL:CG2	2.27	0.64
1:C:88:HIS:CE1	1:C:90:GLU:HG3	2.33	0.64
2:B:280:SER:O	2:B:281:GLN:HB3	1.97	0.63

*Continued on next page...*

*Continued from previous page...*

Atom-1	Atom-2	Interatomic distance (Å)	Clash overlap (Å)
4:F:333:ASN:ND2	15:F:402:ACP:O2G	2.27	0.63
4:F:71:LEU:HD11	4:F:294:CYS:HB3	1.79	0.63
4:F:193:GLU:HG3	4:F:196:HIS:H	1.65	0.62
1:A:217:LEU:HD21	1:A:368:LEU:HD23	1.82	0.62
1:A:373:ARG:CZ	8:A:505:IMD:H5	2.29	0.62
3:E:92:ASN:O	3:E:96:MET:HG2	2.00	0.62
4:F:169:LEU:O	4:F:169:LEU:HD12	1.98	0.62
4:F:219:GLY:HA3	4:F:264:PHE:CZ	2.35	0.62
2:B:105[B]:LYS:NZ	7:C:501:GOL:H31	2.14	0.61
4:F:100:ILE:HG23	4:F:126:ASP:OD2	2.00	0.61
2:B:247:GLN:HG3	2:B:248:LEU:N	2.15	0.61
2:B:250:ALA:HB1	13:B:505:NV4:O16	2.00	0.61
4:F:100:ILE:HD11	4:F:127:GLU:C	2.21	0.61
1:A:283:HIS:HD2	1:A:284:GLU:O	1.84	0.61
4:F:341:LYS:CB	16:F:502:HOH:O	2.49	0.61
4:F:100:ILE:HD11	4:F:127:GLU:CA	2.32	0.60
2:B:248:LEU:HD11	13:B:505:NV4:S30	2.41	0.60
2:D:323:MET:HB3	2:D:373:MET:CE	2.32	0.60
1:C:1:MET:O	1:C:2:ARG:HB2	2.02	0.60
2:D:352:LYS:HG3	13:D:507:NV4:C17	2.32	0.60
1:A:248:LEU:HD21	1:A:316[B]:CYS:SG	2.42	0.60
1:A:278:ALA:HA	1:A:369:ALA:HB2	1.83	0.60
4:F:100:ILE:HG22	4:F:101:TYR:N	2.16	0.60
2:B:2:ARG:NE	2:B:133:GLN:HG3	2.17	0.60
4:F:197:ARG:NH1	4:F:257:GLU:OE2	2.22	0.60
2:B:312:TYR:CE1	2:B:377:PHE:HZ	2.20	0.59
2:D:258:ASN:HB3	13:D:507:NV4:C18	2.32	0.59
1:C:339:ARG:O	16:C:609:HOH:O	2.17	0.59
2:D:172:MET:HG3	2:D:387:LEU:HD11	1.84	0.59
4:F:340:GLN:HA	4:F:343:TYR:HD2	1.67	0.59
1:A:304:LYS:HB2	16:A:614:HOH:O	2.03	0.59
1:C:271:THR:HG23	1:C:300:ASN:C	2.23	0.59
4:F:188:LYS:HD2	4:F:323:GLU:CD	2.23	0.59
2:B:42:LEU:HD12	2:B:42:LEU:N	2.17	0.58
4:F:184:LYS:HD2	4:F:185:TYR:N	2.18	0.58
2:B:345:GLU:CD	2:B:345:GLU:H	2.06	0.58
2:B:47:GLU:HB3	2:B:245:PRO:HG3	1.84	0.58
2:D:2:ARG:NH2	16:D:605:HOH:O	2.26	0.58
1:C:163:LYS:HE2	3:E:93:PHE:CG	2.38	0.58
1:C:214:ARG:CZ	16:C:607:HOH:O	2.41	0.57
2:D:401:ARG:HE	2:D:403:ALA:HB2	1.68	0.57

*Continued on next page...*

*Continued from previous page...*

Atom-1	Atom-2	Interatomic distance (Å)	Clash overlap (Å)
2:B:205:ASP:HB3	2:B:303:ALA:HA	1.85	0.57
1:C:253:THR:HB	7:C:501:GOL:H11	1.84	0.57
2:D:50:ASN:ND2	2:D:50:ASN:H	2.02	0.57
1:A:265:ILE:HG23	1:A:432:TYR:CE1	2.40	0.57
4:F:148:ILE:HG22	4:F:183:GLN:O	2.04	0.57
2:D:26:ASP:OD2	2:D:369:ARG:HD2	2.04	0.57
2:D:295:MET:CG	2:D:377:PHE:HB2	2.34	0.57
2:D:171:VAL:HA	2:D:204:ILE:O	2.06	0.56
2:D:255:LEU:HD13	13:D:507:NV4:C8	2.35	0.56
2:D:180:THR:HG22	2:D:181:VAL:N	2.16	0.56
2:D:295:MET:HG2	2:D:377:PHE:HB2	1.87	0.56
4:F:150:LYS:O	4:F:151:SER:OG	2.12	0.56
2:B:42:LEU:H	2:B:42:LEU:CD1	2.17	0.56
1:C:287:SER:HA	7:C:504:GOL:O2	2.06	0.56
4:F:100:ILE:CG2	4:F:101:TYR:N	2.69	0.56
4:F:74:LYS:NZ	4:F:150:LYS:HE3	2.20	0.56
1:A:288:VAL:HG23	8:A:505:IMD:HN1	1.71	0.55
1:A:335:ILE:HG23	1:A:339:ARG:HG3	1.88	0.55
1:C:71:GLU:HG2	1:C:72:PRO:N	2.21	0.55
2:D:203:CYS:SG	2:D:384[B]:ILE:HD11	2.46	0.55
2:D:153:LEU:O	2:D:157:ILE:HG13	2.07	0.55
3:E:137:LYS:O	3:E:141:GLU:HG2	2.06	0.55
4:F:149:ALA:HB2	4:F:182:ILE:CD1	2.36	0.55
4:F:255:ARG:HB2	4:F:256:TYR:CD2	2.42	0.55
4:F:40:MET:HE2	4:F:47:LEU:HG	1.88	0.55
3:E:135:LYS:NZ	3:E:139:LEU:HD21	2.20	0.55
2:B:75:MET:HE3	2:B:92:PHE:CD2	2.40	0.55
1:A:210:TYR:CE2	1:A:214:ARG:HD2	2.42	0.55
1:A:18:ASN:HD21	1:A:78:VAL:HG22	1.72	0.55
2:B:105[A]:LYS:NZ	7:C:501:GOL:H31	2.22	0.54
1:C:293:ASN:HA	1:C:335:ILE:HD11	1.89	0.54
3:E:89:GLU:OE2	16:E:203:HOH:O	2.18	0.54
4:F:151:SER:CB	4:F:180:HIS:HA	2.38	0.54
4:F:70:LYS:CE	4:F:298:ILE:HD11	2.37	0.54
1:A:209[B]:ILE:HD12	1:A:227:LEU:HB3	1.89	0.54
4:F:341:LYS:HB3	16:F:502:HOH:O	2.08	0.54
1:A:23:LEU:O	1:A:27:GLU:HG3	2.07	0.54
1:A:206:ASN:HA	1:A:209[B]:ILE:HG12	1.89	0.54
1:A:304:LYS:CB	16:A:614:HOH:O	2.55	0.54
3:E:108[A]:ASN:OD1	16:E:204:HOH:O	2.19	0.54
2:D:112:ALA:O	2:D:115:VAL:HG12	2.08	0.54

*Continued on next page...*

*Continued from previous page...*

Atom-1	Atom-2	Interatomic distance (Å)	Clash overlap (Å)
4:F:73:ARG:HH22	4:F:151:SER:C	2.10	0.54
1:C:271:THR:HG23	1:C:300:ASN:O	2.07	0.54
1:A:36:MET:HB3	1:A:61:HIS:CE1	2.43	0.54
2:B:396:THR:O	2:B:400:ARG:HG2	2.09	0.53
2:D:323:MET:HB3	2:D:373:MET:HE1	1.91	0.53
1:A:9:VAL:HG22	1:A:68[B]:VAL:CG1	2.39	0.53
2:B:301:MET:HE1	2:B:307:PRO:HG2	1.90	0.53
2:D:21:TRP:CZ3	2:D:63:PRO:HB3	2.44	0.53
2:D:393:GLU:HA	2:D:396:THR:HG22	1.90	0.53
2:B:238:VAL:HG22	2:B:378:ILE:HG12	1.90	0.53
2:B:105[B]:LYS:HZ2	7:C:501:GOL:H31	1.73	0.53
4:F:282:SER:HB2	4:F:325:LEU:HD13	1.91	0.53
1:C:288:VAL:H	7:C:504:GOL:H12	1.73	0.52
2:D:258:ASN:HB3	13:D:507:NV4:C17	2.38	0.52
1:C:275:VAL:HG13	1:C:368:LEU:HD21	1.90	0.52
2:D:248:LEU:O	2:D:248:LEU:HG	2.09	0.52
4:F:247:LYS:HD3	4:F:253:TYR:CE2	2.44	0.52
1:A:220:GLU:CG	2:B:326:LYS:HD2	2.40	0.52
2:D:16:ILE:HD11	2:D:138:THR:HB	1.91	0.52
1:A:76:ASP:O	1:A:80[A]:THR:HG22	2.10	0.52
2:D:191:VAL:O	2:D:195:VAL:HG23	2.08	0.52
3:E:44:ASP:N	16:E:206:HOH:O	2.42	0.52
1:C:36:MET:HB3	1:C:61:HIS:CE1	2.45	0.52
2:D:141:LEU:HD12	2:D:172:MET:SD	2.50	0.52
4:F:100:ILE:HD13	4:F:126:ASP:CG	2.30	0.52
4:F:98:TYR:O	4:F:181:VAL:HA	2.10	0.52
3:E:135:LYS:HZ1	3:E:139:LEU:HD21	1.75	0.52
1:C:440:VAL:HG12	1:C:440:VAL:O	2.09	0.51
2:B:2:ARG:HA	2:B:131:CYS:O	2.10	0.51
1:C:2:ARG:HA	1:C:2:ARG:NE	2.25	0.51
1:C:221:ARG:CG	1:C:221:ARG:O	2.57	0.51
2:D:208:ALA:O	2:D:212:ILE:HG13	2.11	0.51
2:B:42:LEU:HB2	2:B:358:ILE:HD11	1.92	0.51
2:D:334:ASN:OD1	2:D:338:LYS:HE2	2.11	0.51
2:B:27:GLU:CA	2:B:369:ARG:NH2	2.68	0.51
2:B:192:HIS:NE2	2:B:424[A]:ASN:OD1	2.44	0.51
2:D:409:THR:O	3:E:140:LYS:HE2	2.10	0.51
4:F:100:ILE:CG2	4:F:101:TYR:H	2.25	0.50
2:B:306:ASP:HB3	2:B:309:HIS:ND1	2.26	0.50
1:A:79:ARG:O	1:A:84:ARG:HB3	2.11	0.50
2:B:255:LEU:HD22	2:B:259:MET:HG3	1.92	0.50

*Continued on next page...*

*Continued from previous page...*

Atom-1	Atom-2	Interatomic distance (Å)	Clash overlap (Å)
2:D:158[A]:ARG:NH2	2:D:197:ASN:OD1	2.44	0.50
1:C:71:GLU:OE2	1:C:73:THR:OG1	2.24	0.50
4:F:44:ARG:NH1	16:F:511:HOH:O	2.45	0.50
2:B:159:GLU:HB2	3:E:72:LEU:HD13	1.93	0.50
2:D:250:ALA:HB1	13:D:507:NV4:O16	2.11	0.50
4:F:217:ARG:HG3	4:F:374:ILE:O	2.12	0.49
1:A:221:ARG:NH1	2:B:325:MET:O	2.45	0.49
4:F:199:PHE:HA	4:F:241:THR:HG21	1.93	0.49
4:F:249:TYR:O	4:F:249:TYR:CD1	2.65	0.49
1:A:136[A]:LEU:HD23	1:A:167:LEU:HB2	1.93	0.49
2:D:419:THR:O	2:D:422:GLU:OE1	2.31	0.49
1:C:151[B]:SER:HA	1:C:194[B]:THR:HG22	1.95	0.49
2:B:217:LEU:HD13	2:B:277:SER:HB3	1.93	0.49
2:D:119:LEU:O	2:D:123:ARG:HG3	2.12	0.49
2:D:323:MET:HB3	2:D:373:MET:HE2	1.95	0.48
4:F:70:LYS:HE3	4:F:298:ILE:HD11	1.95	0.48
2:B:133:GLN:OE1	2:B:252:LEU:HG	2.13	0.48
1:C:83:TYR:HD2	1:C:86:LEU:HD22	1.78	0.48
2:D:7:ILE:O	2:D:137:LEU:HD12	2.14	0.48
2:B:337:ASN:OD1	4:F:36:ARG:HD3	2.13	0.48
2:B:2:ARG:HE	2:B:133:GLN:HG3	1.77	0.48
2:B:141:LEU:HD12	2:B:172:MET:SD	2.54	0.48
2:D:158[A]:ARG:NH2	16:D:609:HOH:O	2.47	0.48
2:B:295:MET:SD	2:B:375:ALA:HB1	2.53	0.48
1:C:340:SER:HA	16:C:609:HOH:O	2.13	0.48
4:F:151:SER:HB2	4:F:180:HIS:ND1	2.29	0.48
1:A:180:ALA:HB3	1:A:183:GLU:HG3	1.96	0.48
1:A:401:LYS:NZ	16:A:609:HOH:O	2.40	0.48
1:A:178:SER:OG	13:B:505:NV4:N32	2.46	0.48
2:D:132:LEU:HD23	2:D:164:ARG:HH11	1.78	0.48
2:B:106:GLY:O	2:B:111:GLY:HA3	2.13	0.48
2:B:2:ARG:CZ	2:B:133:GLN:HG3	2.43	0.48
2:D:205:ASP:HB3	2:D:303:ALA:HA	1.96	0.48
2:D:177:VAL:HG12	2:D:177:VAL:O	2.14	0.48
3:E:44:ASP:OD1	3:E:44:ASP:N	2.46	0.48
3:E:72:LEU:O	3:E:76:ARG:HG2	2.12	0.48
1:C:66:VAL:HG23	1:C:125:LEU:HD12	1.95	0.48
2:D:12:CYS:HB2	10:D:501:GDP:C8	2.49	0.48
4:F:169:LEU:HD11	4:F:172:PHE:CD2	2.49	0.48
2:B:174:SER:HB2	2:B:207:GLU:HB2	1.95	0.47
2:D:7:ILE:O	2:D:137:LEU:HA	2.14	0.47

*Continued on next page...*



*Continued from previous page...*

Atom-1	Atom-2	Interatomic distance (Å)	Clash overlap (Å)
1:C:220:GLU:CB	2:D:326:LYS:HE3	2.31	0.47
4:F:127:GLU:HB2	4:F:130:VAL:HG22	1.96	0.47
1:A:119:LEU:HD11	1:A:156:ARG:HB3	1.95	0.47
1:A:285:GLN:OE1	1:A:372[B]:GLN:HG3	2.14	0.47
1:C:179:THR:HA	1:C:183:GLU:OE1	2.14	0.47
2:B:83:PHE:O	2:B:86:ILE:HG22	2.14	0.47
1:A:192:HIS:CG	1:A:421:ALA:HA	2.49	0.47
2:D:318:ILE:HG12	13:D:507:NV4:C28	2.44	0.47
4:F:150:LYS:HD2	4:F:151:SER:N	2.25	0.47
2:B:22[A]:GLU:HG2	2:B:83:PHE:CD1	2.49	0.47
1:C:196[B]:GLU:HG2	16:C:666:HOH:O	2.15	0.47
1:C:230:LEU:O	1:C:234:ILE:HD12	2.14	0.47
2:D:339:ASN:CB	7:D:506:GOL:H32	2.45	0.47
1:A:108:TYR:CE2	1:A:413:MET:HG3	2.50	0.47
1:C:287:SER:HB2	7:C:504:GOL:C1	2.43	0.47
2:D:75:MET:CE	2:D:94:PHE:HD2	2.28	0.47
1:A:18:ASN:HD21	1:A:78:VAL:CG2	2.28	0.47
2:D:104:ALA:HB2	2:D:413:MET:SD	2.56	0.47
4:F:341:LYS:N	16:F:502:HOH:O	1.86	0.46
1:A:83:TYR:O	1:A:84:ARG:C	2.54	0.46
4:F:349:GLY:HA3	4:F:374:ILE:HD11	1.98	0.46
2:B:286:LEU:N	2:B:286:LEU:HD12	2.31	0.46
1:C:172:TYR:CE2	1:C:391:LEU:HD22	2.50	0.46
2:D:75:MET:HE2	2:D:94:PHE:HD2	1.80	0.46
3:E:137:LYS:HG3	3:E:140:LYS:NZ	2.30	0.46
1:A:221:ARG:HG2	2:B:325:MET:CE	2.45	0.46
1:C:7:ILE:HG21	1:C:153:LEU:HD21	1.98	0.46
1:C:233:GLN:HG3	1:C:368:LEU:CD1	2.46	0.46
2:D:109:THR:O	2:D:113:GLU:OE1	2.34	0.46
2:D:248:LEU:HD23	2:D:250:ALA:HB2	1.96	0.46
1:A:7:ILE:HG23	1:A:66[B]:VAL:HG13	1.98	0.46
1:C:270:ALA:HB3	1:C:302:MET:HG2	1.98	0.46
1:A:304:LYS:CG	16:A:614:HOH:O	2.63	0.46
2:B:298:SER:HA	2:B:301:MET:HE2	1.98	0.46
1:C:336:LYS:HE2	16:C:785:HOH:O	2.14	0.46
2:D:165:ILE:HG21	2:D:252:LEU:HB3	1.98	0.46
1:C:108:TYR:O	1:C:112:LYS:HG2	2.16	0.45
2:D:158[B]:ARG:NH2	2:D:199:ASP:OD2	2.49	0.45
2:B:298:SER:HA	2:B:301:MET:CE	2.46	0.45
2:B:301:MET:HE1	2:B:307:PRO:CG	2.46	0.45
4:F:247:LYS:HA	4:F:253:TYR:CD1	2.51	0.45

*Continued on next page...*



*Continued from previous page...*

Atom-1	Atom-2	Interatomic distance (Å)	Clash overlap (Å)
2:D:275:LEU:HD23	2:D:275:LEU:HA	1.82	0.45
1:C:2:ARG:NH2	16:C:619:HOH:O	2.49	0.45
1:A:185:TYR:O	1:A:189:LEU:HG	2.17	0.45
1:C:392:ASP:OD2	1:C:429:GLU:OE1	2.35	0.45
4:F:100:ILE:HD13	4:F:126:ASP:HB3	1.99	0.45
3:E:49:GLU:OE2	3:E:53:LYS:HE2	2.17	0.45
1:A:112:LYS:HG3	3:E:54:LEU:HB3	1.99	0.45
1:A:217:LEU:HD21	1:A:368:LEU:CD2	2.47	0.44
1:C:18:ASN:OD1	1:C:78:VAL:HG22	2.17	0.44
1:C:288:VAL:CG2	7:C:504:GOL:H2	2.43	0.44
2:D:406:HIS:CD2	2:D:407:TRP:HD1	2.35	0.44
2:B:2:ARG:NH2	2:B:133:GLN:HG3	2.31	0.44
1:A:357:TYR:CE2	3:E:17:GLY:HA2	2.52	0.44
1:A:327:ASP:OD2	16:A:603:HOH:O	2.21	0.44
2:D:318:ILE:CG1	13:D:507:NV4:C28	2.96	0.44
13:D:507:NV4:C28	13:D:507:NV4:O24	2.65	0.44
4:F:169:LEU:HA	4:F:169:LEU:HD13	1.77	0.44
4:F:340:GLN:HA	4:F:343:TYR:CD2	2.50	0.44
1:A:209[B]:ILE:HG13	1:A:210:TYR:N	2.32	0.44
2:D:120:ASP:OD1	2:D:123:ARG:NH1	2.49	0.44
4:F:307:LEU:HD23	4:F:307:LEU:HA	1.89	0.44
2:B:208:ALA:HB2	2:B:304:ALA:N	2.33	0.44
2:B:204:ILE:HD13	2:B:231:VAL:HG13	2.00	0.44
2:B:6:HIS:CD2	2:B:21:TRP:HE1	2.35	0.44
2:B:69:ASP:O	2:B:94:PHE:HA	2.18	0.44
1:C:285:GLN:OE1	1:C:372:GLN:NE2	2.48	0.44
1:A:18:ASN:OD1	1:A:78:VAL:HG22	2.18	0.44
1:C:165:SER:HA	1:C:199:ASP:OD2	2.18	0.44
2:D:352:LYS:HD3	2:D:352:LYS:HA	1.78	0.44
4:F:193:GLU:HA	4:F:194:PRO:C	2.37	0.44
4:F:197:ARG:HH12	4:F:257:GLU:CD	2.17	0.44
2:B:172:MET:HG3	2:B:387:LEU:HD11	1.99	0.43
4:F:127:GLU:HB2	4:F:130:VAL:HG21	1.99	0.43
4:F:349:GLY:O	4:F:353[A]:VAL:HG22	2.18	0.43
1:C:177:VAL:CG1	1:C:224:TYR:CE1	3.01	0.43
2:D:318:ILE:HD11	13:D:507:NV4:C28	2.48	0.43
2:B:68:VAL:HA	2:B:93:VAL:O	2.18	0.43
1:C:117:LEU:HD11	1:C:121:ARG:NH2	2.33	0.43
2:B:171:VAL:HA	2:B:204:ILE:O	2.18	0.43
1:A:336:LYS:CG	3:E:24:LEU:HD13	2.48	0.43
1:C:151[A]:SER:HB2	1:C:193:THR:CG2	2.48	0.43

*Continued on next page...*

*Continued from previous page...*

Atom-1	Atom-2	Interatomic distance (Å)	Clash overlap (Å)
1:C:83:TYR:CD2	1:C:86:LEU:HD22	2.53	0.43
1:A:288:VAL:N	8:A:505:IMD:HN1	2.12	0.43
1:C:174:ALA:HB1	1:C:207:GLU:HB2	2.01	0.43
2:D:185:TYR:CE2	2:D:398:MET:HE2	2.53	0.43
4:F:230:SER:OG	4:F:230:SER:O	2.33	0.43
1:A:298:PRO:HA	1:A:301:GLN:CD	2.39	0.43
2:D:387:LEU:C	2:D:387:LEU:HD23	2.39	0.43
1:A:66[A]:VAL:HG23	1:A:125:LEU:HD12	2.01	0.43
1:A:280:LYS:HE2	1:A:283:HIS:ND1	2.34	0.43
2:B:334:ASN:O	2:B:338:LYS:HG2	2.18	0.43
1:C:175:PRO:HA	1:C:179:THR:HG21	2.01	0.43
1:C:177:VAL:HG11	1:C:224:TYR:HE1	1.83	0.42
1:A:331:ALA:O	1:A:335:ILE:HG13	2.19	0.42
2:B:67:LEU:HD22	2:B:92:PHE:CE2	2.54	0.42
4:F:100:ILE:HD13	4:F:126:ASP:CB	2.49	0.42
2:B:36:TYR:CE2	2:B:46:LEU:HD11	2.54	0.42
2:B:115:VAL:HG23	2:B:153:LEU:HD23	2.01	0.42
2:B:301:MET:HE2	2:B:301:MET:HB2	1.65	0.42
4:F:330:ILE:HD13	4:F:330:ILE:HA	1.77	0.42
1:A:218:ASP:CB	16:A:610:HOH:O	2.55	0.42
1:A:300:ASN:OD1	7:A:504:GOL:H12	2.20	0.42
1:C:248:LEU:CD1	1:C:357:TYR:OH	2.65	0.42
2:D:297:ASP:OD1	2:D:298:SER:N	2.53	0.42
3:E:90:ASN:ND2	16:E:205:HOH:O	2.29	0.42
4:F:247:LYS:CE	4:F:259:GLY:HA2	2.49	0.42
1:A:304:LYS:HG3	16:A:614:HOH:O	2.19	0.42
2:D:347:ILE:HG22	2:D:350:ASN:HB3	2.00	0.42
2:D:405:LEU:HD23	2:D:405:LEU:HA	1.84	0.42
1:A:329:ASN:HB3	3:E:6:MET:HE1	2.02	0.42
2:B:88:ARG:HH11	2:B:90:ASP:HB2	1.85	0.42
1:C:63:PRO:HG2	1:C:87:PHE:CE1	2.54	0.42
2:B:88:ARG:NH1	2:B:90:ASP:HB2	2.35	0.42
2:D:19:LYS:O	2:D:23:VAL:HG23	2.20	0.42
4:F:241:THR:OG1	15:F:402:ACP:O3'	2.38	0.42
1:A:76:ASP:OD1	1:A:79:ARG:NH1	2.43	0.41
4:F:81:ILE:O	4:F:87:LEU:O	2.38	0.41
2:B:147[B]:SER:HB2	2:B:190:SER:HG	1.84	0.41
4:F:242:ASN:OD1	15:F:402:ACP:H5'1	2.20	0.41
1:C:151[A]:SER:HB2	1:C:193:THR:HG21	2.02	0.41
4:F:20:LEU:O	4:F:24:THR:HG23	2.20	0.41
2:B:218:LYS:HA	2:B:218:LYS:HD3	1.69	0.41

*Continued on next page...*

*Continued from previous page...*

Atom-1	Atom-2	Interatomic distance (Å)	Clash overlap (Å)
1:C:333:ALA:O	1:C:337:THR:HG23	2.19	0.41
2:B:214:PHE:CD1	2:B:220:THR:HA	2.56	0.41
1:A:166:LYS:HE2	1:A:197:HIS:O	2.21	0.41
1:C:248:LEU:HD12	1:C:357:TYR:CZ	2.55	0.41
4:F:74:LYS:HZ3	4:F:150:LYS:HE3	1.84	0.41
4:F:247:LYS:HZ1	4:F:259:GLY:CA	2.23	0.41
4:F:271:LEU:HD23	4:F:275[B]:LEU:HD12	2.01	0.41
2:B:22[B]:GLU:HG3	2:B:83:PHE:CE1	2.56	0.41
1:C:188:ILE:HG13	1:C:425:MET:HG3	2.01	0.41
2:D:21:TRP:CE3	2:D:63:PRO:HB3	2.56	0.41
4:F:209:HIS:HA	4:F:311:SER:O	2.20	0.41
1:C:66:VAL:HG23	1:C:125:LEU:CD1	2.51	0.41
1:A:357:TYR:CZ	3:E:17:GLY:HA2	2.56	0.41
4:F:13:VAL:HG23	16:F:524:HOH:O	2.21	0.41
1:A:336:LYS:HD2	1:A:336:LYS:HA	1.74	0.41
1:C:141:PHE:O	1:C:147:SER:HB3	2.19	0.41
1:C:1:MET:O	1:C:2:ARG:CB	2.69	0.41
2:D:291:LEU:HG	2:D:375:ALA:HB2	2.02	0.41
3:E:47:LEU:HD12	3:E:47:LEU:O	2.21	0.41
2:B:75:MET:N	16:B:614:HOH:O	2.41	0.41
1:C:151[B]:SER:HB3	1:C:193:THR:HG21	2.02	0.41
4:F:188:LYS:HD3	4:F:188:LYS:HA	1.94	0.41
4:F:14:TYR:CD1	4:F:41:LEU:HD22	2.56	0.41
4:F:47:LEU:HD23	4:F:48:PRO:HD2	2.03	0.41
2:D:414:ASP:N	2:D:414:ASP:OD1	2.54	0.41
4:F:206:LEU:HD23	4:F:353[A]:VAL:CG2	2.51	0.41
1:A:315[A]:CYS:HG	1:A:351:PHE:HE2	1.62	0.40
2:B:192:HIS:ND1	2:B:424[B]:ASN:ND2	2.67	0.40
1:C:177:VAL:HG11	1:C:224:TYR:CE1	2.55	0.40
2:D:339:ASN:CG	7:D:506:GOL:H32	2.41	0.40
2:B:7:ILE:O	2:B:137:LEU:HA	2.20	0.40
2:D:108:TYR:OH	2:D:417:GLU:OE2	2.24	0.40
2:D:83:PHE:O	2:D:86:ILE:HG22	2.20	0.40
2:B:126:SER:O	2:B:129:CYS:HB2	2.21	0.40
2:B:36:TYR:CD2	2:B:46:LEU:HD11	2.56	0.40
1:C:248:LEU:HD13	1:C:355:ILE:HD12	2.03	0.40
4:F:188:LYS:HD2	4:F:323:GLU:OE2	2.21	0.40
2:B:13:GLY:HA2	2:B:138[B]:THR:HG22	2.03	0.40
2:D:64:ARG:HG3	2:D:125:GLU:OE1	2.22	0.40
4:F:191:LEU:HD23	4:F:191:LEU:HA	1.86	0.40
1:A:409:VAL:HA	1:A:413:MET:O	2.21	0.40

*Continued on next page...*

Continued from previous page...

Atom-1	Atom-2	Interatomic distance (Å)	Clash overlap (Å)
1:A:18:ASN:ND2	1:A:78:VAL:HG22	2.34	0.40
1:C:351:PHE:N	1:C:351:PHE:CD1	2.89	0.40
4:F:274:ALA:C	4:F:275[A]:LEU:HD22	2.42	0.40

All (1) symmetry-related close contacts are listed below. The label for Atom-2 includes the symmetry operator and encoded unit-cell translations to be applied.

Atom-1	Atom-2	Interatomic distance (Å)	Clash overlap (Å)
16:A:665:HOH:O	16:C:677:HOH:O[3_554]	1.70	0.50

## 5.3 Torsion angles [i](#)

### 5.3.1 Protein backbone [i](#)

In the following table, the Percentiles column shows the percent Ramachandran outliers of the chain as a percentile score with respect to all X-ray entries followed by that with respect to entries of similar resolution.

The Analysed column shows the number of residues for which the backbone conformation was analysed, and the total number of residues.

Mol	Chain	Analysed	Favoured	Allowed	Outliers	Percentiles	
1	A	449/451 (100%)	437 (97%)	10 (2%)	2 (0%)	36	45
1	C	447/451 (99%)	434 (97%)	12 (3%)	1 (0%)	49	61
2	B	428/445 (96%)	414 (97%)	12 (3%)	2 (0%)	31	38
2	D	416/445 (94%)	407 (98%)	8 (2%)	1 (0%)	49	61
3	E	119/152 (78%)	118 (99%)	1 (1%)	0	100	100
4	F	296/388 (76%)	288 (97%)	6 (2%)	2 (1%)	24	29
All	All	2155/2332 (92%)	2098 (97%)	49 (2%)	8 (0%)	36	45

All (8) Ramachandran outliers are listed below:

Mol	Chain	Res	Type
1	A	281	ALA
2	D	73	GLY
4	F	92	THR
4	F	255	ARG
1	A	178	SER

Continued on next page...

*Continued from previous page...*

Mol	Chain	Res	Type
2	B	177	VAL
1	C	178	SER
2	B	360	PRO

### 5.3.2 Protein sidechains [i](#)

In the following table, the Percentiles column shows the percent sidechain outliers of the chain as a percentile score with respect to all X-ray entries followed by that with respect to entries of similar resolution.

The Analysed column shows the number of residues for which the sidechain conformation was analysed, and the total number of residues.

Mol	Chain	Analysed	Rotameric	Outliers	Percentiles	
1	A	382/379 (101%)	372 (97%)	10 (3%)	49	66
1	C	380/379 (100%)	374 (98%)	6 (2%)	65	81
2	B	377/383 (98%)	364 (97%)	13 (3%)	40	55
2	D	367/383 (96%)	357 (97%)	10 (3%)	48	65
3	E	111/136 (82%)	110 (99%)	1 (1%)	81	90
4	F	285/346 (82%)	270 (95%)	15 (5%)	25	34
All	All	1902/2006 (95%)	1847 (97%)	55 (3%)	44	62

All (55) residues with a non-rotameric sidechain are listed below:

Mol	Chain	Res	Type
1	A	38	SER
1	A	71	GLU
1	A	84	ARG
1	A	113	GLU
1	A	164	LYS
1	A	220	GLU
1	A	232	SER
1	A	282	TYR
1	A	381	THR
1	A	430	LYS
2	B	85	GLN
2	B	139	HIS
2	B	192	HIS
2	B	232	SER
2	B	238	VAL

*Continued on next page...*

*Continued from previous page...*

<b>Mol</b>	<b>Chain</b>	<b>Res</b>	<b>Type</b>
2	B	247	GLN
2	B	248	LEU
2	B	255	LEU
2	B	259	MET
2	B	282	GLN
2	B	293	GLN
2	B	325	MET
2	B	430	SER
1	C	71	GLU
1	C	286	LEU
1	C	336	LYS
1	C	347	CYS
1	C	361	THR
1	C	430	LYS
2	D	35	SER
2	D	50	ASN
2	D	80	SER
2	D	124	LYS
2	D	139	HIS
2	D	248	LEU
2	D	259	MET
2	D	318	ILE
2	D	345	GLU
2	D	422	GLU
3	E	139	LEU
4	F	32	LYS
4	F	45	ASN
4	F	73	ARG
4	F	86	GLU
4	F	87	LEU
4	F	88	SER
4	F	92	THR
4	F	100	ILE
4	F	128	ARG
4	F	169	LEU
4	F	193	GLU
4	F	222	ARG
4	F	230	SER
4	F	248	GLU
4	F	377	LYS

Some sidechains can be flipped to improve hydrogen bonding and reduce clashes. All (3) such sidechains are listed below:

Mol	Chain	Res	Type
1	A	283	HIS
2	B	101	ASN
4	F	196	HIS

### 5.3.3 RNA [i](#)

There are no RNA molecules in this entry.

### 5.4 Non-standard residues in protein, DNA, RNA chains [i](#)

There are no non-standard protein/DNA/RNA residues in this entry.

### 5.5 Carbohydrates [i](#)

There are no carbohydrates in this entry.

### 5.6 Ligand geometry [i](#)

Of 30 ligands modelled in this entry, 11 are monoatomic - leaving 19 for Mogul analysis.

In the following table, the Counts columns list the number of bonds (or angles) for which Mogul statistics could be retrieved, the number of bonds (or angles) that are observed in the model and the number of bonds (or angles) that are defined in the Chemical Component Dictionary. The Link column lists molecule types, if any, to which the group is linked. The Z score for a bond length (or angle) is the number of standard deviations the observed value is removed from the expected value. A bond length (or angle) with  $|Z| > 2$  is considered an outlier worth inspection. RMSZ is the root-mean-square of all Z scores of the bond lengths (or angles).

Mol	Type	Chain	Res	Link	Bond lengths			Bond angles		
					Counts	RMSZ	# Z  > 2	Counts	RMSZ	# Z  > 2
5	GTP	A	501	6	27,34,34	0.98	1 (3%)	29,54,54	2.20	10 (34%)
7	GOL	A	504	-	5,5,5	0.42	0	5,5,5	0.49	0
8	IMD	A	505	-	5,5,5	1.32	1 (20%)	5,5,5	0.31	0
7	GOL	A	507	-	5,5,5	0.33	0	5,5,5	0.25	0
10	GDP	B	501	6	25,30,30	1.36	4 (16%)	27,47,47	2.04	6 (22%)
12	MES	B	504	-	12,12,12	2.09	1 (8%)	14,16,16	2.25	5 (35%)
13	NV4	B	505	-	35,40,40	2.07	7 (20%)	48,59,59	2.18	13 (27%)
7	GOL	C	501	-	5,5,5	0.35	0	5,5,5	0.38	0
5	GTP	C	502	6	27,34,34	1.10	1 (3%)	29,54,54	1.74	5 (17%)
7	GOL	C	504	-	5,5,5	0.39	0	5,5,5	0.22	0

Mol	Type	Chain	Res	Link	Bond lengths			Bond angles		
					Counts	RMSZ	# Z  > 2	Counts	RMSZ	# Z  > 2
14	PEG	C	505	-	6,6,6	0.51	0	5,5,5	0.40	0
8	IMD	C	508	-	3,5,5	0.48	0	4,5,5	0.37	0
7	GOL	C	509	-	5,5,5	0.41	0	5,5,5	0.49	0
10	GDP	D	501	6	25,30,30	1.23	2 (8%)	27,47,47	1.96	7 (25%)
7	GOL	D	504	-	5,5,5	0.34	0	5,5,5	0.76	0
7	GOL	D	505	2	5,5,5	0.35	0	5,5,5	0.52	0
7	GOL	D	506	-	5,5,5	0.40	0	5,5,5	0.72	0
13	NV4	D	507	-	35,40,40	2.02	7 (20%)	48,59,59	2.46	18 (37%)
15	ACP	F	402	6	27,33,33	3.95	8 (29%)	30,52,52	2.79	4 (13%)

In the following table, the Chirals column lists the number of chiral outliers, the number of chiral centers analysed, the number of these observed in the model and the number defined in the Chemical Component Dictionary. Similar counts are reported in the Torsion and Rings columns. '-' means no outliers of that kind were identified.

Mol	Type	Chain	Res	Link	Chirals	Torsions	Rings
5	GTP	A	501	6	-	0/18/38/38	0/3/3/3
7	GOL	A	504	-	-	0/4/4/4	0/0/0/0
8	IMD	A	505	-	-	0/0/0/0	0/1/1/1
7	GOL	A	507	-	-	0/4/4/4	0/0/0/0
10	GDP	B	501	6	-	0/12/32/32	0/3/3/3
12	MES	B	504	-	-	0/6/14/14	0/1/1/1
13	NV4	B	505	-	-	0/12/49/49	0/6/6/6
7	GOL	C	501	-	-	0/4/4/4	0/0/0/0
5	GTP	C	502	6	-	0/18/38/38	0/3/3/3
7	GOL	C	504	-	-	0/4/4/4	0/0/0/0
14	PEG	C	505	-	-	0/4/4/4	0/0/0/0
8	IMD	C	508	-	-	0/0/0/0	0/1/1/1
7	GOL	C	509	-	-	0/4/4/4	0/0/0/0
10	GDP	D	501	6	-	0/12/32/32	0/3/3/3
7	GOL	D	504	-	-	0/4/4/4	0/0/0/0
7	GOL	D	505	2	-	0/4/4/4	0/0/0/0
7	GOL	D	506	-	-	0/4/4/4	0/0/0/0
13	NV4	D	507	-	-	0/12/49/49	0/6/6/6
15	ACP	F	402	6	-	0/15/38/38	0/3/3/3

All (32) bond length outliers are listed below:

Mol	Chain	Res	Type	Atoms	Z	Observed(Å)	Ideal(Å)
12	B	504	MES	C8-S	-7.12	1.67	1.77
15	F	402	ACP	O4'-C4'	-7.11	1.29	1.45
13	B	505	NV4	C3-S30	-4.29	1.78	1.84

Continued on next page...



*Continued from previous page...*

Mol	Chain	Res	Type	Atoms	Z	Observed(Å)	Ideal(Å)
13	D	507	NV4	C3-S30	-4.16	1.78	1.84
15	F	402	ACP	PB-O2B	-3.14	1.48	1.56
15	F	402	ACP	O3'-C3'	-2.60	1.36	1.43
10	B	501	GDP	PB-O2B	-2.35	1.45	1.54
8	A	505	IMD	C2-N3	2.22	1.36	1.31
13	D	507	NV4	C19-C18	2.36	1.45	1.39
10	B	501	GDP	C5-C4	2.46	1.46	1.40
10	B	501	GDP	O4'-C1'	2.48	1.44	1.41
13	B	505	NV4	C19-C18	2.54	1.45	1.39
13	D	507	NV4	O25-C10	2.83	1.43	1.38
13	B	505	NV4	O25-C10	2.94	1.43	1.38
5	A	501	GTP	C6-N1	3.06	1.38	1.33
10	D	501	GDP	C5-C4	3.08	1.47	1.40
5	C	502	GTP	C6-N1	3.15	1.38	1.33
15	F	402	ACP	C2-N3	3.29	1.37	1.32
13	B	505	NV4	C9-C10	3.53	1.48	1.40
15	F	402	ACP	O2'-C2'	3.54	1.51	1.43
10	B	501	GDP	C6-C5	3.76	1.48	1.41
13	B	505	NV4	C11-C10	3.91	1.49	1.40
13	D	507	NV4	C11-C10	4.00	1.49	1.40
10	D	501	GDP	C6-C5	4.09	1.48	1.41
13	D	507	NV4	C9-C10	4.12	1.49	1.40
13	D	507	NV4	O14-C13	4.15	1.44	1.35
15	F	402	ACP	C6-N6	4.76	1.53	1.34
13	B	505	NV4	O14-C13	4.83	1.46	1.35
13	D	507	NV4	C1-C2	6.00	1.50	1.40
13	B	505	NV4	C1-C2	6.17	1.50	1.40
15	F	402	ACP	PB-O3A	7.74	1.67	1.58
15	F	402	ACP	O4'-C1'	14.92	1.62	1.41

All (68) bond angle outliers are listed below:

Mol	Chain	Res	Type	Atoms	Z	Observed(°)	Ideal(°)
15	F	402	ACP	N3-C2-N1	-9.59	120.66	128.86
15	F	402	ACP	N6-C6-N1	-7.01	104.03	118.57
13	D	507	NV4	O25-C10-C11	-6.50	110.58	120.12
13	D	507	NV4	C9-C10-C11	-6.44	112.76	119.55
5	A	501	GTP	N3-C2-N1	-5.94	118.70	127.41
13	B	505	NV4	C9-C10-C11	-5.92	113.31	119.55
5	C	502	GTP	N3-C2-N1	-5.09	119.94	127.41
13	D	507	NV4	O25-C10-C9	-4.63	113.33	120.12
13	B	505	NV4	O25-C10-C9	-4.34	113.75	120.12

*Continued on next page...*

*Continued from previous page...*

Mol	Chain	Res	Type	Atoms	Z	Observed(°)	Ideal(°)
10	D	501	GDP	C6-C5-C4	-4.32	116.61	120.85
13	B	505	NV4	O16-C13-C5	-3.80	124.54	129.41
10	B	501	GDP	C6-C5-C4	-3.71	117.21	120.85
5	A	501	GTP	C5-C6-N1	-3.65	118.28	123.47
10	D	501	GDP	C5-C6-N1	-3.50	118.49	123.47
10	B	501	GDP	N3-C2-N1	-3.48	122.31	127.41
10	B	501	GDP	C5-C6-N1	-3.48	118.53	123.47
13	D	507	NV4	O16-C13-C5	-3.31	125.17	129.41
5	A	501	GTP	PA-O3A-PB	-2.99	122.58	132.63
15	F	402	ACP	PA-O3A-PB	-2.87	123.09	132.42
5	A	501	GTP	C4-C5-N7	-2.77	106.74	109.41
10	D	501	GDP	N3-C2-N1	-2.76	123.36	127.41
10	D	501	GDP	C4-C5-N7	-2.74	106.76	109.41
10	D	501	GDP	PA-O3A-PB	-2.70	123.56	132.63
10	B	501	GDP	C4-C5-N7	-2.61	106.89	109.41
13	B	505	NV4	O26-C11-C12	-2.60	119.74	124.15
5	C	502	GTP	C5-C6-N1	-2.53	119.87	123.47
13	D	507	NV4	O24-C9-C8	-2.50	119.92	124.15
13	D	507	NV4	O26-C11-C12	-2.45	120.01	124.15
5	A	501	GTP	C5'-C4'-C3'	-2.42	106.18	115.29
5	A	501	GTP	C6-C5-C4	-2.25	118.64	120.85
12	B	504	MES	O2S-S-O1S	-2.16	106.48	113.95
5	A	501	GTP	PB-O3B-PG	-2.15	125.41	132.63
13	B	505	NV4	C27-O24-C9	2.01	120.52	117.53
13	B	505	NV4	C29-O26-C11	2.02	120.53	117.53
13	D	507	NV4	C7-C6-C5	2.18	116.58	113.37
5	C	502	GTP	N2-C2-N3	2.20	121.77	117.75
12	B	504	MES	C2-C3-N4	2.24	113.19	110.11
13	D	507	NV4	C29-O26-C11	2.29	120.93	117.53
12	B	504	MES	O3S-S-C8	2.52	109.85	105.77
13	D	507	NV4	C9-C8-C7	2.58	123.80	119.85
13	D	507	NV4	O24-C9-C10	2.58	119.78	115.20
13	B	505	NV4	O14-C13-O16	2.68	124.24	121.41
13	D	507	NV4	C22-O21-C18	2.73	108.97	105.34
13	B	505	NV4	C22-O21-C18	2.78	109.02	105.34
13	D	507	NV4	C12-C11-C10	2.82	123.45	120.22
13	B	505	NV4	C2-C1-C6	2.85	122.04	114.37
5	A	501	GTP	N2-C2-N1	2.94	121.86	117.25
13	B	505	NV4	C22-O23-C19	2.96	109.26	105.34
5	C	502	GTP	C6-N1-C2	3.00	120.38	116.06
13	D	507	NV4	C2-C1-C6	3.07	122.62	114.37
13	D	507	NV4	C1-C6-C5	3.19	112.00	106.55

*Continued on next page...*

Continued from previous page...

Mol	Chain	Res	Type	Atoms	Z	Observed(°)	Ideal(°)
13	D	507	NV4	C22-O23-C19	3.20	109.59	105.34
12	B	504	MES	O1S-S-C8	3.73	111.40	106.92
13	D	507	NV4	C4-C5-C6	3.88	120.69	113.24
13	D	507	NV4	C27-O24-C9	3.89	123.31	117.53
13	B	505	NV4	C4-C5-C6	4.01	120.94	113.24
5	C	502	GTP	C2-N3-C4	4.02	119.86	115.16
10	B	501	GDP	C6-N1-C2	4.06	121.89	116.06
10	D	501	GDP	C6-N1-C2	4.11	121.98	116.06
5	A	501	GTP	C6-N1-C2	4.19	122.09	116.06
10	D	501	GDP	C2-N3-C4	4.40	120.30	115.16
13	B	505	NV4	C15-C4-C5	4.55	108.23	101.72
5	A	501	GTP	C2-N3-C4	4.88	120.85	115.16
13	D	507	NV4	C15-C4-C5	5.04	108.94	101.72
10	B	501	GDP	C2-N3-C4	5.46	121.54	115.16
13	B	505	NV4	C7-C6-C5	5.84	121.95	113.37
12	B	504	MES	C5-N4-C3	5.90	121.92	108.87
15	F	402	ACP	C5-C6-N6	7.78	136.33	120.47

There are no chirality outliers.

There are no torsion outliers.

There are no ring outliers.

10 monomers are involved in 34 short contacts:

Mol	Chain	Res	Type	Clashes	Symm-Clashes
7	A	504	GOL	1	0
8	A	505	IMD	4	0
7	A	507	GOL	1	0
13	B	505	NV4	3	0
7	C	501	GOL	4	0
7	C	504	GOL	6	0
10	D	501	GDP	1	0
7	D	506	GOL	2	0
13	D	507	NV4	9	0
15	F	402	ACP	3	0

## 5.7 Other polymers [\(i\)](#)

There are no such residues in this entry.

## 5.8 Polymer linkage issues

There are no chain breaks in this entry.

## 6 Fit of model and data [i](#)

### 6.1 Protein, DNA and RNA chains [i](#)

In the following table, the column labelled ‘#RSRZ > 2’ contains the number (and percentage) of RSRZ outliers, followed by percent RSRZ outliers for the chain as percentile scores relative to all X-ray entries and entries of similar resolution. The OWAB column contains the minimum, median, 95<sup>th</sup> percentile and maximum values of the occupancy-weighted average B-factor per residue. The column labelled ‘Q < 0.9’ lists the number of (and percentage) of residues with an average occupancy less than 0.9.

Mol	Chain	Analysed	<RSRZ>	#RSRZ>2	OWAB(Å <sup>2</sup> )	Q<0.9
1	A	439/451 (97%)	0.17	15 (3%) 45 52	25, 41, 76, 126	0
1	C	440/451 (97%)	-0.05	9 (2%) 65 71	20, 32, 61, 98	0
2	B	423/445 (95%)	0.16	21 (4%) 29 36	20, 40, 80, 114	1 (0%)
2	D	418/445 (93%)	0.45	46 (11%) 5 8	27, 49, 84, 126	2 (0%)
3	E	121/152 (79%)	0.35	9 (7%) 14 20	29, 53, 90, 106	0
4	F	312/388 (80%)	0.90	74 (23%) 0 0	30, 61, 113, 144	0
All	All	2153/2332 (92%)	0.29	174 (8%) 12 16	20, 44, 87, 144	3 (0%)

All (174) RSRZ outliers are listed below:

Mol	Chain	Res	Type	RSRZ
2	D	57	THR	10.6
4	F	253	TYR	9.3
4	F	173	ILE	8.8
4	F	102	PRO	6.9
1	A	439	SER	6.5
1	A	282	TYR	6.4
4	F	170	LEU	6.2
4	F	244	CYS	5.9
4	F	182	ILE	5.6
4	F	172	PHE	5.4
4	F	130	VAL	5.4
4	F	249	TYR	5.4
4	F	101	TYR	5.3
4	F	134	ALA	5.2
2	B	59	ASN	5.1
4	F	167	SER	5.0
3	E	139	LEU	5.0
4	F	362	ALA	4.9
4	F	171	ASP	4.9

*Continued on next page...*

*Continued from previous page...*

<b>Mol</b>	<b>Chain</b>	<b>Res</b>	<b>Type</b>	<b>RSRZ</b>
1	A	438	ASP	4.8
1	A	281	ALA	4.8
3	E	28	SER	4.7
4	F	133	ALA	4.7
4	F	132	LEU	4.7
4	F	129	GLU	4.7
2	D	182	VAL	4.7
4	F	166	ALA	4.6
4	F	126	ASP	4.5
4	F	162	ILE	4.5
4	F	169	LEU	4.4
1	C	340	SER	4.3
2	D	248	LEU	4.3
4	F	256	TYR	4.2
3	E	140	LYS	4.2
4	F	255	ARG	4.1
4	F	163	SER	4.1
4	F	231	ALA	4.0
2	D	60	LYS	4.0
2	B	438	ALA	3.9
2	D	179	ASP	3.9
4	F	131	PHE	3.9
4	F	100	ILE	3.9
2	D	1	MET	3.8
2	D	97	SER	3.8
4	F	227	PRO	3.7
2	D	58	GLY	3.7
4	F	361	LEU	3.6
2	B	37	HIS	3.6
4	F	168	GLU	3.6
4	F	20	LEU	3.6
4	F	149	ALA	3.5
4	F	165	GLU	3.5
4	F	194	PRO	3.5
1	C	440	VAL	3.5
2	D	405	LEU	3.5
2	D	74	THR	3.4
4	F	21	LEU	3.4
4	F	27	TRP	3.4
4	F	181	VAL	3.4
3	E	45	PRO	3.4
2	B	277	SER	3.3

*Continued on next page...*

*Continued from previous page...*

Mol	Chain	Res	Type	RSRZ
1	A	283	HIS	3.3
2	B	33	THR	3.3
3	E	27	PRO	3.3
2	D	56	ALA	3.3
4	F	240	LEU	3.3
2	D	82	PRO	3.3
4	F	164	SER	3.3
2	B	280	SER	3.2
2	D	415	GLU	3.2
4	F	230	SER	3.2
2	B	60	LYS	3.1
2	D	400	ARG	3.1
2	B	437	ASP	3.1
2	D	416	MET	3.1
2	D	250	ALA	3.1
2	D	441	ASP	3.0
3	E	135	LYS	3.0
4	F	225	SER	3.0
4	F	239	HIS	3.0
1	A	42	ILE	2.9
4	F	180	HIS	2.9
1	A	279	GLU	2.9
4	F	147	TRP	2.9
2	B	61	TYR	2.9
4	F	135	TYR	2.8
2	D	407	TRP	2.8
4	F	151	SER	2.8
2	D	221[A]	THR	2.8
4	F	26	GLN	2.8
2	D	85	GLN	2.7
4	F	228	TYR	2.7
2	D	83	PHE	2.7
2	D	94	PHE	2.7
1	C	178	SER	2.6
2	D	260	VAL	2.6
2	B	337	ASN	2.6
4	F	145	ASN	2.6
2	D	79	ARG	2.6
1	A	171	ILE	2.6
2	B	35	SER	2.5
2	B	338	LYS	2.5
2	D	59	ASN	2.5

*Continued on next page...*

*Continued from previous page...*

<b>Mol</b>	<b>Chain</b>	<b>Res</b>	<b>Type</b>	<b>RSRZ</b>
2	D	178	SER	2.5
1	C	133	GLN	2.5
1	A	365	GLY	2.5
2	B	50[A]	ASN	2.5
4	F	1	MET	2.5
4	F	22	LEU	2.5
3	E	141	GLU	2.5
4	F	128	ARG	2.5
4	F	236	LYS	2.5
4	F	254	GLY	2.5
4	F	224	SER	2.4
2	D	403	ALA	2.4
1	C	337	THR	2.4
2	D	33	THR	2.4
2	D	220	THR	2.4
4	F	31	ARG	2.4
4	F	9	GLU	2.4
2	D	75	MET	2.4
2	B	62	VAL	2.4
2	B	369	ARG	2.4
3	E	44	ASP	2.4
1	A	262	TYR	2.4
4	F	28	LYS	2.3
2	D	255	LEU	2.3
2	D	259	MET	2.3
4	F	150	LYS	2.3
2	D	202	TYR	2.3
4	F	243	HIS	2.3
1	C	1	MET	2.3
4	F	241	THR	2.3
4	F	247	LYS	2.3
2	B	340	SER	2.3
4	F	98	TYR	2.3
2	D	238	VAL	2.3
2	D	406	HIS	2.2
2	D	37	HIS	2.2
4	F	246	GLN	2.2
2	B	36	TYR	2.2
2	D	401	ARG	2.2
2	D	402	LYS	2.2
4	F	146	VAL	2.2
1	A	284	GLU	2.2

*Continued on next page...*



*Continued from previous page...*

Mol	Chain	Res	Type	RSRZ
2	B	55	GLU	2.2
4	F	226	GLU	2.2
1	A	346	TRP	2.2
4	F	248	GLU	2.2
2	D	158[A]	ARG	2.1
4	F	148	ILE	2.1
1	C	167	LEU	2.1
4	F	24	THR	2.1
4	F	223	THR	2.1
1	C	165	SER	2.1
3	E	133	VAL	2.1
2	D	55	GLU	2.1
1	A	1	MET	2.1
1	A	201	ALA	2.1
4	F	229	ASN	2.1
2	B	217	LEU	2.1
2	D	41	ASP	2.1
4	F	187	GLU	2.1
2	D	378	ILE	2.1
2	B	32	PRO	2.1
1	A	80[A]	THR	2.0
2	B	308	ARG	2.0
4	F	197	ARG	2.0
4	F	144	GLY	2.0
2	D	177	VAL	2.0
2	D	268	PHE	2.0
1	C	253	THR	2.0
2	D	80	SER	2.0
2	D	124	LYS	2.0

## 6.2 Non-standard residues in protein, DNA, RNA chains [i](#)

There are no non-standard protein/DNA/RNA residues in this entry.

## 6.3 Carbohydrates [i](#)

There are no carbohydrates in this entry.

## 6.4 Ligands [i](#)

In the following table, the Atoms column lists the number of modelled atoms in the group and the number defined in the chemical component dictionary. The B-factors column lists the minimum, median, 95<sup>th</sup> percentile and maximum values of B factors of atoms in the group. The column labelled 'Q< 0.9' lists the number of atoms with occupancy less than 0.9.

Mol	Type	Chain	Res	Atoms	RSCC	RSR	B-factors(Å <sup>2</sup> )	Q<0.9
7	GOL	C	501	6/6	0.71	0.61	78,80,88,94	0
7	GOL	C	509	6/6	0.78	0.16	80,97,100,100	0
6	MG	D	502	1/1	0.80	0.09	52,52,52,52	0
9	CA	C	507	1/1	0.82	0.14	105,105,105,105	0
7	GOL	D	505	6/6	0.84	0.30	79,81,84,86	0
6	MG	A	502	1/1	0.85	0.22	40,40,40,40	0
14	PEG	C	505	7/7	0.85	0.17	42,77,82,82	0
7	GOL	A	507	6/6	0.85	0.13	75,82,90,90	0
7	GOL	D	504	6/6	0.86	0.29	90,103,104,104	0
7	GOL	A	504	6/6	0.86	0.19	47,68,71,76	0
13	NV4	D	507	35/35	0.86	0.25	41,64,88,100	0
7	GOL	C	504	6/6	0.89	0.58	67,70,83,84	0
8	IMD	A	505	5/5	0.90	0.34	68,82,95,98	0
7	GOL	D	506	6/6	0.92	0.20	54,62,67,68	0
6	MG	C	503	1/1	0.93	0.14	27,27,27,27	0
8	IMD	C	508	5/5	0.93	0.15	38,48,56,56	0
6	MG	F	401	1/1	0.93	0.09	75,75,75,75	0
15	ACP	F	402	31/31	0.93	0.12	51,78,113,122	0
6	MG	D	503	1/1	0.95	0.10	60,60,60,60	0
11	NA	B	503	1/1	0.96	0.33	78,78,78,78	0
6	MG	B	502	1/1	0.96	0.27	20,20,20,20	0
13	NV4	B	505	35/35	0.96	0.19	30,41,78,92	0
11	NA	C	506	1/1	0.97	0.17	27,27,27,27	0
12	MES	B	504	12/12	0.98	0.11	35,41,56,59	0
5	GTP	A	501	32/32	0.98	0.17	23,31,45,46	0
10	GDP	D	501	28/28	0.98	0.09	40,47,51,59	0
6	MG	A	503	1/1	0.98	0.39	74,74,74,74	0
10	GDP	B	501	28/28	0.99	0.16	17,28,33,35	0
9	CA	A	506	1/1	0.99	0.04	53,53,53,53	0
5	GTP	C	502	32/32	0.99	0.14	21,24,32,36	0

## 6.5 Other polymers [i](#)

There are no such residues in this entry.