



# Full wwPDB X-ray Structure Validation Report ⓘ

May 16, 2020 – 10:25 am BST

PDB ID : 4JDV  
Title : Crystal structure of germ-line precursor of NIH45-46 Fab  
Authors : Diskin, R.; Scharf, L.; Bjorkman, P.J.  
Deposited on : 2013-02-25  
Resolution : 1.65 Å(reported)

This is a Full wwPDB X-ray Structure Validation Report for a publicly released PDB entry.

We welcome your comments at [validation@mail.wwpdb.org](mailto:validation@mail.wwpdb.org)

A user guide is available at

<https://www.wwpdb.org/validation/2017/XrayValidationReportHelp>

with specific help available everywhere you see the ⓘ symbol.

---

The following versions of software and data (see [references ⓘ](#)) were used in the production of this report:

MolProbity : 4.02b-467  
Mogul : 1.8.5 (274361), CSD as541be (2020)  
Xtriage (Phenix) : 1.13  
EDS : 2.11  
Percentile statistics : 20191225.v01 (using entries in the PDB archive December 25th 2019)  
Refmac : 5.8.0158  
CCP4 : 7.0.044 (Gargrove)  
Ideal geometry (proteins) : Engh & Huber (2001)  
Ideal geometry (DNA, RNA) : Parkinson et al. (1996)  
Validation Pipeline (wwPDB-VP) : 2.11

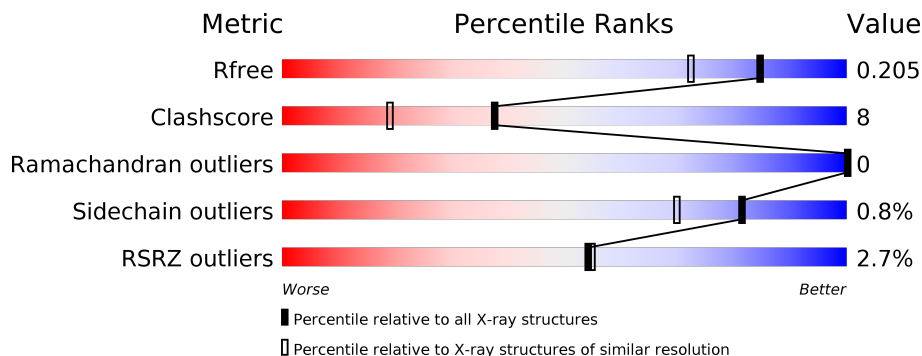
# 1 Overall quality at a glance

The following experimental techniques were used to determine the structure:

*X-RAY DIFFRACTION*

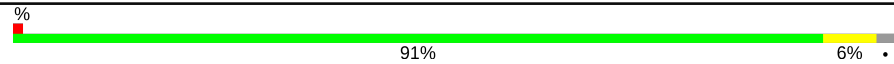
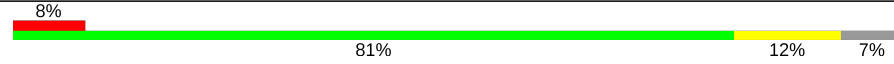
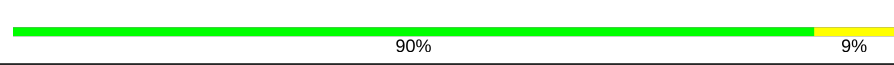
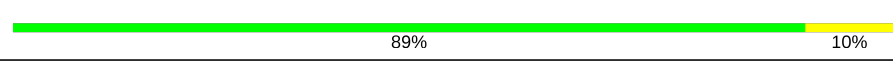
The reported resolution of this entry is 1.65 Å.

Percentile scores (ranging between 0-100) for global validation metrics of the entry are shown in the following graphic. The table shows the number of entries on which the scores are based.



Metric	Whole archive (#Entries)	Similar resolution (#Entries, resolution range(Å))
$R_{free}$	130704	1827 (1.66-1.66)
Clashscore	141614	1931 (1.66-1.66)
Ramachandran outliers	138981	1891 (1.66-1.66)
Sidechain outliers	138945	1891 (1.66-1.66)
RSRZ outliers	127900	1791 (1.66-1.66)

The table below summarises the geometric issues observed across the polymeric chains and their fit to the electron density. The red, orange, yellow and green segments on the lower bar indicate the fraction of residues that contain outliers for  $\geq 3$ , 2, 1 and 0 types of geometric quality criteria respectively. A grey segment represents the fraction of residues that are not modelled. The numeric value for each fraction is indicated below the corresponding segment, with a dot representing fractions  $\leq 5\%$ . The upper red bar (where present) indicates the fraction of residues that have poor fit to the electron density. The numeric value is given above the bar.

Mol	Chain	Length	Quality of chain
1	A	232	
1	H	232	
2	B	210	
2	L	210	

The following table lists non-polymeric compounds, carbohydrate monomers and non-standard residues in protein, DNA, RNA chains that are outliers for geometric or electron-density-fit crite-

ria:

Mol	Type	Chain	Res	Chirality	Geometry	Clashes	Electron density
6	1PE	H	302	-	-	X	-
6	1PE	L	302	-	-	X	-

## 2 Entry composition [i](#)

There are 7 unique types of molecules in this entry. The entry contains 7597 atoms, of which 0 are hydrogens and 0 are deuteriums.

In the tables below, the ZeroOcc column contains the number of atoms modelled with zero occupancy, the AltConf column contains the number of residues with at least one atom in alternate conformation and the Trace column contains the number of residues modelled with at most 2 atoms.

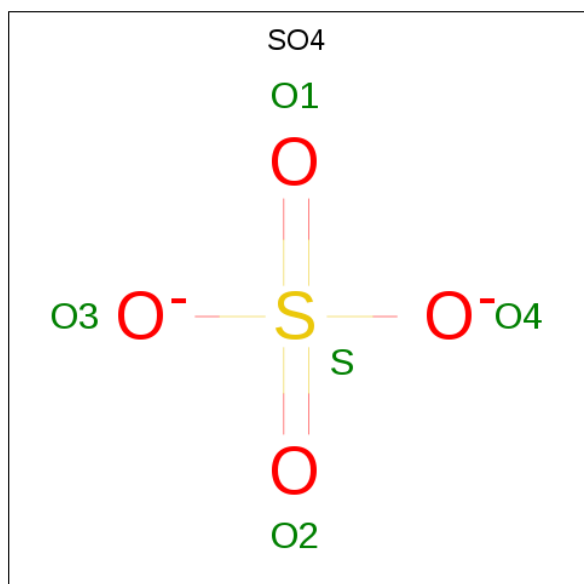
- Molecule 1 is a protein called Fab heavy chain.

Mol	Chain	Residues	Atoms					ZeroOcc	AltConf	Trace
			Total	C	N	O	S			
1	A	227	Total 1737	C 1095	N 299	O 333	S 10	0	0	0
1	H	215	Total 1652	C 1046	N 282	O 315	S 9	0	0	0

- Molecule 2 is a protein called Fab light chain.

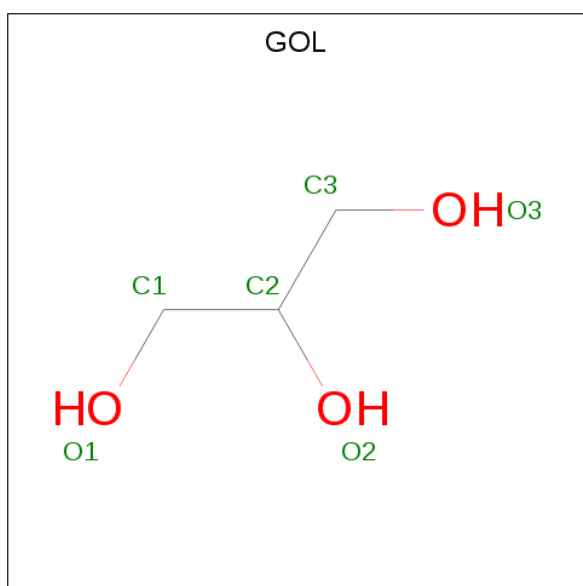
Mol	Chain	Residues	Atoms					ZeroOcc	AltConf	Trace
			Total	C	N	O	S			
2	B	208	Total 1604	C 1007	N 269	O 324	S 4	0	0	0
2	L	209	Total 1613	C 1012	N 270	O 327	S 4	0	0	0

- Molecule 3 is SULFATE ION (three-letter code: SO<sub>4</sub>) (formula: O<sub>4</sub>S).



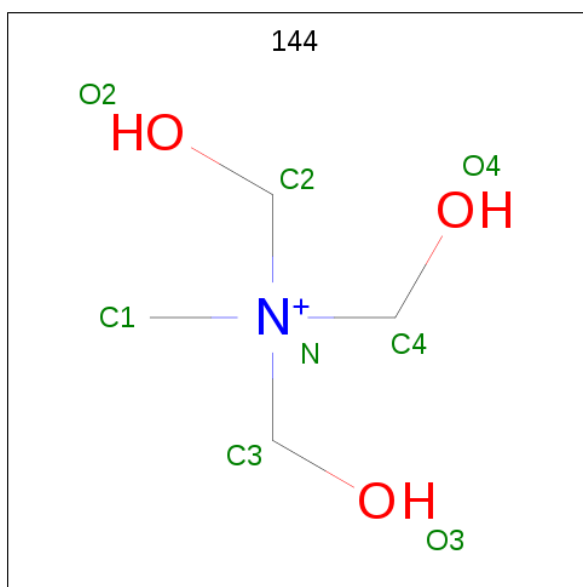
Mol	Chain	Residues	Atoms	ZeroOcc	AltConf
3	A	1	Total O S 5 4 1	0	0
3	A	1	Total O S 5 4 1	0	0
3	B	1	Total O S 5 4 1	0	0
3	L	1	Total O S 5 4 1	0	0

- Molecule 4 is GLYCEROL (three-letter code: GOL) (formula: C<sub>3</sub>H<sub>8</sub>O<sub>3</sub>).



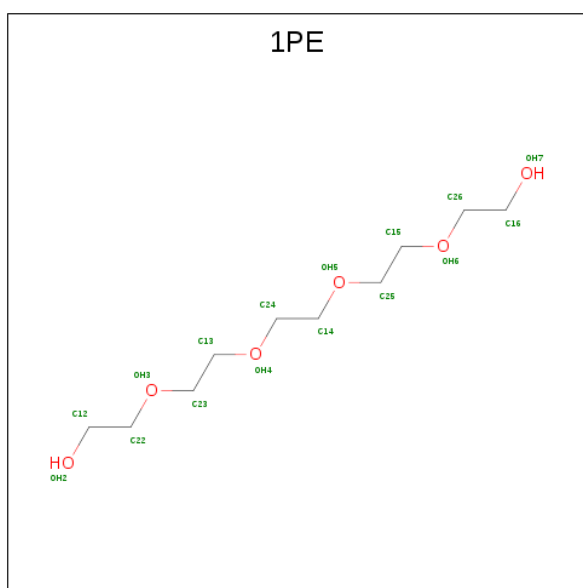
Mol	Chain	Residues	Atoms	ZeroOcc	AltConf
4	A	1	Total C O 6 3 3	0	0
4	B	1	Total C O 6 3 3	0	0

- Molecule 5 is TRIS-HYDROXYMETHYL-METHYL-AMMONIUM (three-letter code: 144) (formula: C<sub>4</sub>H<sub>12</sub>NO<sub>3</sub>).



Mol	Chain	Residues	Atoms				ZeroOcc	AltConf
5	A	1	Total	C	N	O	0	0
			8	4	1	3		
5	H	1	Total	C	N	O	0	0
			8	4	1	3		

- Molecule 6 is PENTAETHYLENE GLYCOL (three-letter code: 1PE) (formula:  $C_{10}H_{22}O_6$ ).



Mol	Chain	Residues	Atoms			ZeroOcc	AltConf
6	H	1	Total	C	O	0	0
			16	10	6		
6	L	1	Total	C	O	0	0
			16	10	6		

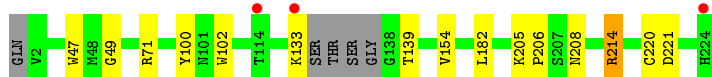
- Molecule 7 is water.

<b>Mol</b>	<b>Chain</b>	<b>Residues</b>	<b>Atoms</b>		<b>ZeroOcc</b>	<b>AltConf</b>
7	A	281	Total 281	O 281	0	0
7	B	238	Total 238	O 238	0	0
7	H	173	Total 173	O 173	0	0
7	L	219	Total 219	O 219	0	0

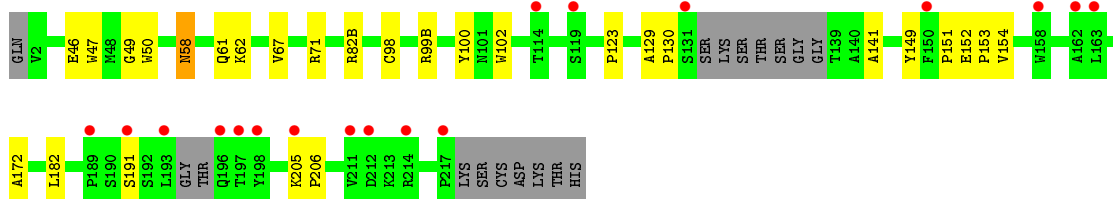
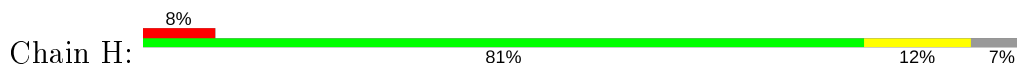
### 3 Residue-property plots [i](#)

These plots are drawn for all protein, RNA and DNA chains in the entry. The first graphic for a chain summarises the proportions of the various outlier classes displayed in the second graphic. The second graphic shows the sequence view annotated by issues in geometry and electron density. Residues are color-coded according to the number of geometric quality criteria for which they contain at least one outlier: green = 0, yellow = 1, orange = 2 and red = 3 or more. A red dot above a residue indicates a poor fit to the electron density ( $RSRZ > 2$ ). Stretches of 2 or more consecutive residues without any outlier are shown as a green connector. Residues present in the sample, but not in the model, are shown in grey.

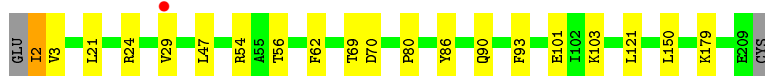
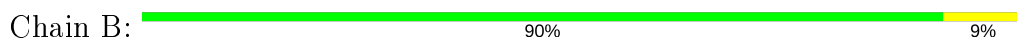
- Molecule 1: Fab heavy chain



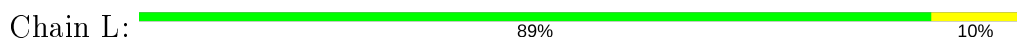
- Molecule 1: Fab heavy chain



- Molecule 2: Fab light chain



- Molecule 2: Fab light chain





## 4 Data and refinement statistics

Property	Value	Source
Space group	P 21 21 21	Depositor
Cell constants a, b, c, $\alpha$ , $\beta$ , $\gamma$	55.96Å 70.14Å 225.11Å 90.00° 90.00° 90.00°	Depositor
Resolution (Å)	37.89 – 1.65 37.89 – 1.65	Depositor EDS
% Data completeness (in resolution range)	99.4 (37.89-1.65) 95.2 (37.89-1.65)	Depositor EDS
$R_{merge}$	0.14	Depositor
$R_{sym}$	(Not available)	Depositor
$\langle I/\sigma(I) \rangle$ <sup>1</sup>	1.90 (at 1.65Å)	Xtrriage
Refinement program	PHENIX 1.8_1069	Depositor
R, $R_{free}$	0.174 , 0.203 0.176 , 0.205	Depositor DCC
$R_{free}$ test set	1826 reflections (1.71%)	wwPDB-VP
Wilson B-factor (Å <sup>2</sup> )	16.9	Xtrriage
Anisotropy	0.213	Xtrriage
Bulk solvent $k_{sol}$ (e/Å <sup>3</sup> ), $B_{sol}$ (Å <sup>2</sup> )	0.37 , 55.8	EDS
L-test for twinning <sup>2</sup>	$\langle  L  \rangle = 0.48$ , $\langle L^2 \rangle = 0.31$	Xtrriage
Estimated twinning fraction	No twinning to report.	Xtrriage
$F_o, F_c$ correlation	0.96	EDS
Total number of atoms	7597	wwPDB-VP
Average B, all atoms (Å <sup>2</sup> )	25.0	wwPDB-VP

Xtrriage's analysis on translational NCS is as follows: *The largest off-origin peak in the Patterson function is 4.13% of the height of the origin peak. No significant pseudotranslation is detected.*

<sup>1</sup>Intensities estimated from amplitudes.

<sup>2</sup>Theoretical values of  $\langle |L| \rangle$ ,  $\langle L^2 \rangle$  for acentric reflections are 0.5, 0.333 respectively for untwinned datasets, and 0.375, 0.2 for perfectly twinned datasets.

## 5 Model quality [i](#)

### 5.1 Standard geometry [i](#)

Bond lengths and bond angles in the following residue types are not validated in this section: GOL, 144, SO4, 1PE

The Z score for a bond length (or angle) is the number of standard deviations the observed value is removed from the expected value. A bond length (or angle) with  $|Z| > 5$  is considered an outlier worth inspection. RMSZ is the root-mean-square of all Z scores of the bond lengths (or angles).

Mol	Chain	Bond lengths		Bond angles	
		RMSZ	# Z  >5	RMSZ	# Z  >5
1	A	0.38	0/1783	0.58	1/2426 (0.0%)
1	H	0.39	0/1696	0.55	0/2310
2	B	0.44	1/1639 (0.1%)	0.62	0/2226
2	L	0.38	0/1648	0.58	0/2238
All	All	0.40	1/6766 (0.0%)	0.58	1/9200 (0.0%)

All (1) bond length outliers are listed below:

Mol	Chain	Res	Type	Atoms	Z	Observed(Å)	Ideal(Å)
2	B	80	PRO	N-CD	5.57	1.55	1.47

All (1) bond angle outliers are listed below:

Mol	Chain	Res	Type	Atoms	Z	Observed(°)	Ideal(°)
1	A	214	ARG	NE-CZ-NH1	5.64	123.12	120.30

There are no chirality outliers.

There are no planarity outliers.

### 5.2 Too-close contacts [i](#)

In the following table, the Non-H and H(model) columns list the number of non-hydrogen atoms and hydrogen atoms in the chain respectively. The H(added) column lists the number of hydrogen atoms added and optimized by MolProbity. The Clashes column lists the number of clashes within the asymmetric unit, whereas Symm-Clashes lists symmetry related clashes.

Mol	Chain	Non-H	H(model)	H(added)	Clashes	Symm-Clashes
1	A	1737	0	1682	10	0
1	H	1652	0	1596	26	0

*Continued on next page...*

Continued from previous page...

Mol	Chain	Non-H	H(model)	H(added)	Clashes	Symm-Clashes
2	B	1604	0	1555	24	0
2	L	1613	0	1564	33	0
3	A	10	0	0	0	0
3	B	5	0	0	0	0
3	L	5	0	0	0	0
4	A	6	0	8	0	0
4	B	6	0	8	0	0
5	A	8	0	12	2	0
5	H	8	0	12	1	0
6	H	16	0	22	7	0
6	L	16	0	22	22	0
7	A	281	0	0	6	0
7	B	238	0	0	5	0
7	H	173	0	0	6	0
7	L	219	0	0	4	0
All	All	7597	0	6481	101	0

The all-atom clashscore is defined as the number of clashes found per 1000 atoms (including hydrogen atoms). The all-atom clashscore for this structure is 8.

All (101) close contacts within the same asymmetric unit are listed below, sorted by their clash magnitude.

Atom-1	Atom-2	Interatomic distance (Å)	Clash overlap (Å)
1:H:98:CYS:SG	1:H:99(B):ARG:HG3	1.80	1.20
2:B:2:ILE:HD12	2:B:29:VAL:HG21	1.08	1.03
6:H:302:1PE:H161	7:H:515:HOH:O	1.60	1.01
2:B:29:VAL:HB	2:B:90:GLN:OE1	1.64	0.96
1:H:102:TRP:HE1	6:H:302:1PE:H162	1.34	0.91
2:B:2:ILE:CD1	2:B:29:VAL:HG21	2.01	0.88
1:H:98:CYS:SG	1:H:99(B):ARG:CG	2.63	0.87
1:H:58:ASN:OD1	6:H:302:1PE:H151	1.74	0.86
2:B:2:ILE:HD12	2:B:29:VAL:CG2	2.01	0.86
2:L:81:GLU:HG3	6:L:302:1PE:H142	1.57	0.85
1:A:220:CYS:SG	7:B:606:HOH:O	2.32	0.85
2:L:59:PRO:HG3	6:L:302:1PE:H252	1.57	0.85
6:H:302:1PE:H132	7:L:549:HOH:O	1.78	0.83
2:L:45:ARG:HH11	6:L:302:1PE:H222	1.43	0.83
2:L:45:ARG:NH1	6:L:302:1PE:H222	1.96	0.81
2:L:61:ARG:HH22	6:L:302:1PE:H141	1.46	0.79
2:L:45:ARG:HH11	6:L:302:1PE:C22	1.94	0.79
2:L:59:PRO:HB3	6:L:302:1PE:H161	1.71	0.72

Continued on next page...

*Continued from previous page...*

Atom-1	Atom-2	Interatomic distance (Å)	Clash overlap (Å)
1:H:98:CYS:HG	1:H:99(B):ARG:HG3	1.52	0.72
2:B:24:ARG:NH1	2:B:70:ASP:OD1	2.24	0.71
2:B:2:ILE:HG12	2:B:3:VAL:N	2.06	0.69
2:B:2:ILE:HG23	2:B:93:PHE:CZ	2.28	0.69
1:H:47:TRP:CZ2	1:H:49:GLY:HA2	2.29	0.67
1:H:98:CYS:HG	1:H:99(B):ARG:CG	2.09	0.65
1:H:82(B):ARG:NH1	7:H:558:HOH:O	2.30	0.65
5:A:304:144:H32	7:A:615:HOH:O	1.95	0.65
2:L:61:ARG:HH22	6:L:302:1PE:C14	2.10	0.64
1:H:102:TRP:NE1	6:H:302:1PE:H162	2.12	0.61
6:L:302:1PE:OH4	6:L:302:1PE:OH2	2.20	0.60
2:B:2:ILE:CG2	2:B:93:PHE:CZ	2.86	0.59
1:H:61:GLN:HG2	7:H:541:HOH:O	2.03	0.59
7:A:642:HOH:O	6:L:302:1PE:H152	2.03	0.58
2:L:179:LYS:NZ	2:L:183:GLU:OE2	2.32	0.58
1:H:182:LEU:C	1:H:182:LEU:HD12	2.25	0.58
2:L:61:ARG:NH2	6:L:302:1PE:H141	2.17	0.57
2:B:47:LEU:HD11	2:B:86:TYR:HE2	1.69	0.56
1:A:154:VAL:CG2	1:A:182:LEU:HD21	2.35	0.56
1:H:98:CYS:SG	1:H:99(B):ARG:CD	2.93	0.56
2:B:29:VAL:CB	2:B:90:GLN:OE1	2.48	0.55
1:A:100:TYR:CZ	1:A:102:TRP:HB2	2.42	0.55
2:L:162:GLN:HG3	2:L:169:TYR:CZ	2.42	0.54
2:B:24:ARG:NH1	2:B:69:THR:OG1	2.40	0.54
2:B:150:LEU:HD22	7:B:583:HOH:O	2.07	0.53
2:B:24:ARG:CZ	7:B:601:HOH:O	2.57	0.53
2:B:103:LYS:HD3	7:B:561:HOH:O	2.09	0.52
2:L:59:PRO:CB	6:L:302:1PE:H161	2.39	0.52
2:B:24:ARG:NH2	7:B:601:HOH:O	2.44	0.51
1:H:100:TYR:CZ	1:H:102:TRP:HB2	2.46	0.51
2:L:11:LEU:HB3	2:L:100:LEU:HD13	1.92	0.51
2:L:81:GLU:HG3	6:L:302:1PE:H132	1.93	0.50
1:A:214:ARG:NH2	7:A:673:HOH:O	2.44	0.49
2:B:2:ILE:HG23	2:B:93:PHE:CE1	2.47	0.49
1:H:123:PRO:HB3	1:H:149:TYR:HB3	1.94	0.49
2:L:81:GLU:HG3	6:L:302:1PE:C14	2.37	0.49
2:L:138:ARG:NH2	2:L:159:VAL:HG21	2.27	0.49
2:L:59:PRO:CG	6:L:302:1PE:H252	2.37	0.49
5:A:304:144:C3	7:A:615:HOH:O	2.58	0.49
2:L:8:PRO:HG3	2:L:11:LEU:HD13	1.94	0.49
1:A:139:THR:HG23	6:L:302:1PE:H262	1.94	0.49

*Continued on next page...*

*Continued from previous page...*

Atom-1	Atom-2	Interatomic distance (Å)	Clash overlap (Å)
2:L:45:ARG:HH11	6:L:302:IPE:H221	1.72	0.48
1:H:102:TRP:CZ2	6:H:302:IPE:H251	2.49	0.48
2:B:54:ARG:HD3	2:B:62:PHE:O	2.13	0.48
2:B:24:ARG:NH1	2:B:70:ASP:CG	2.67	0.47
2:B:121:LEU:O	2:B:179:LYS:HD2	2.14	0.47
2:B:47:LEU:HD11	2:B:86:TYR:CE2	2.48	0.47
1:H:67:VAL:HG12	7:H:462:HOH:O	2.14	0.47
2:L:61:ARG:HH12	6:L:302:IPE:H151	1.80	0.47
2:L:185:HIS:ND1	7:L:592:HOH:O	2.28	0.47
6:H:302:IPE:H261	7:H:449:HOH:O	2.14	0.46
1:A:208:ASN:OD1	7:A:676:HOH:O	2.21	0.46
1:A:182:LEU:HD12	1:A:182:LEU:C	2.36	0.46
2:B:56:THR:HG21	1:H:191:SER:OG	2.16	0.46
2:L:81:GLU:CG	6:L:302:IPE:H142	2.37	0.46
1:H:152:GLU:HG3	1:H:153:PRO:HA	1.98	0.45
1:A:133:LYS:HG2	1:A:221:ASP:OD1	2.16	0.45
1:H:46:GLU:OE2	1:H:62:LYS:HD2	2.16	0.45
2:L:1:GLU:HG3	2:L:2:ILE:N	2.30	0.45
2:L:106:VAL:HG21	7:L:548:HOH:O	2.16	0.45
1:A:205:LYS:N	1:A:206:PRO:CD	2.80	0.45
2:L:40:PRO:HD3	7:L:589:HOH:O	2.17	0.44
7:A:612:HOH:O	6:L:302:IPE:H242	2.17	0.44
1:A:47:TRP:CZ2	1:A:49:GLY:HA2	2.53	0.44
1:H:130:PRO:HA	1:H:141:ALA:O	2.17	0.43
2:B:24:ARG:HA	2:B:69:THR:O	2.19	0.43
2:L:1:GLU:HG3	2:L:2:ILE:H	1.84	0.43
1:H:151:PRO:C	1:H:152:GLU:O	2.56	0.42
2:B:21:LEU:N	2:B:21:LEU:HD12	2.34	0.42
2:L:138:ARG:CZ	2:L:159:VAL:HG21	2.49	0.42
2:L:118:ASP:O	2:L:122:LYS:HG3	2.19	0.42
1:H:67:VAL:CG1	7:H:462:HOH:O	2.68	0.42
2:L:1:GLU:CG	2:L:2:ILE:H	2.32	0.42
1:H:172:ALA:H	5:H:301:144:C3	2.33	0.42
2:L:1:GLU:CG	2:L:2:ILE:N	2.83	0.41
2:L:184:LYS:HE3	2:L:184:LYS:HB2	1.82	0.41
1:H:205:LYS:N	1:H:206:PRO:CD	2.83	0.41
1:H:50:TRP:CE2	1:H:58:ASN:HB2	2.55	0.41
6:L:302:IPE:C13	6:L:302:IPE:C12	2.98	0.41
1:H:129:ALA:HA	1:H:130:PRO:HD3	1.96	0.41
2:L:21:LEU:HD12	2:L:21:LEU:N	2.36	0.41
2:L:45:ARG:HD3	6:L:302:IPE:H221	2.01	0.41

*Continued on next page...*

*Continued from previous page...*

Atom-1	Atom-2	Interatomic distance (Å)	Clash overlap (Å)
2:B:2:ILE:HD13	2:B:93:PHE:CD2	2.56	0.40

There are no symmetry-related clashes.

## 5.3 Torsion angles [i](#)

### 5.3.1 Protein backbone [i](#)

In the following table, the Percentiles column shows the percent Ramachandran outliers of the chain as a percentile score with respect to all X-ray entries followed by that with respect to entries of similar resolution.

The Analysed column shows the number of residues for which the backbone conformation was analysed, and the total number of residues.

Mol	Chain	Analysed	Favoured	Allowed	Outliers	Percentiles	
1	A	223/232 (96%)	222 (100%)	1 (0%)	0	100	100
1	H	209/232 (90%)	207 (99%)	2 (1%)	0	100	100
2	B	206/210 (98%)	201 (98%)	5 (2%)	0	100	100
2	L	207/210 (99%)	203 (98%)	4 (2%)	0	100	100
All	All	845/884 (96%)	833 (99%)	12 (1%)	0	100	100

There are no Ramachandran outliers to report.

### 5.3.2 Protein sidechains [i](#)

In the following table, the Percentiles column shows the percent sidechain outliers of the chain as a percentile score with respect to all X-ray entries followed by that with respect to entries of similar resolution.

The Analysed column shows the number of residues for which the sidechain conformation was analysed, and the total number of residues.

Mol	Chain	Analysed	Rotameric	Outliers	Percentiles	
1	A	192/196 (98%)	191 (100%)	1 (0%)	88	81
1	H	182/196 (93%)	179 (98%)	3 (2%)	62	41
2	B	180/182 (99%)	178 (99%)	2 (1%)	73	57
2	L	181/182 (100%)	181 (100%)	0	100	100

*Continued on next page...*

*Continued from previous page...*

Mol	Chain	Analysed	Rotameric	Outliers	Percentiles	
All	All	735/756 (97%)	729 (99%)	6 (1%)	81	70

All (6) residues with a non-rotameric sidechain are listed below:

Mol	Chain	Res	Type
1	A	71	ARG
2	B	2	ILE
2	B	101	GLU
1	H	58	ASN
1	H	71	ARG
1	H	154	VAL

Some sidechains can be flipped to improve hydrogen bonding and reduce clashes. There are no such sidechains identified.

### 5.3.3 RNA [i](#)

There are no RNA molecules in this entry.

## 5.4 Non-standard residues in protein, DNA, RNA chains [i](#)

There are no non-standard protein/DNA/RNA residues in this entry.

## 5.5 Carbohydrates [i](#)

There are no carbohydrates in this entry.

## 5.6 Ligand geometry [i](#)

10 ligands are modelled in this entry.

In the following table, the Counts columns list the number of bonds (or angles) for which Mogul statistics could be retrieved, the number of bonds (or angles) that are observed in the model and the number of bonds (or angles) that are defined in the Chemical Component Dictionary. The Link column lists molecule types, if any, to which the group is linked. The Z score for a bond length (or angle) is the number of standard deviations the observed value is removed from the expected value. A bond length (or angle) with  $|Z| > 2$  is considered an outlier worth inspection. RMSZ is the root-mean-square of all Z scores of the bond lengths (or angles).

Mol	Type	Chain	Res	Link	Bond lengths			Bond angles		
					Counts	RMSZ	# Z  > 2	Counts	RMSZ	# Z  > 2
4	GOL	A	303	-	5,5,5	0.34	0	5,5,5	0.41	0
3	SO4	A	301	-	4,4,4	0.19	0	6,6,6	0.14	0
6	1PE	L	302	-	15,15,15	0.52	0	14,14,14	0.52	0
3	SO4	L	301	-	4,4,4	0.16	0	6,6,6	0.08	0
5	144	A	304	-	1,7,7	0.52	0	3,9,9	0.38	0
4	GOL	B	302	-	5,5,5	0.45	0	5,5,5	0.19	0
3	SO4	A	302	-	4,4,4	0.14	0	6,6,6	0.20	0
6	1PE	H	302	-	15,15,15	0.47	0	14,14,14	0.92	0
5	144	H	301	-	1,7,7	0.73	0	3,9,9	0.13	0
3	SO4	B	301	-	4,4,4	0.14	0	6,6,6	0.06	0

In the following table, the Chirals column lists the number of chiral outliers, the number of chiral centers analysed, the number of these observed in the model and the number defined in the Chemical Component Dictionary. Similar counts are reported in the Torsion and Rings columns. '-' means no outliers of that kind were identified.

Mol	Type	Chain	Res	Link	Chirals	Torsions	Rings
4	GOL	A	303	-	-	0/4/4/4	-
5	144	A	304	-	-	0/0/9/9	-
6	1PE	L	302	-	-	7/13/13/13	-
4	GOL	B	302	-	-	0/4/4/4	-
6	1PE	H	302	-	-	11/13/13/13	-
5	144	H	301	-	-	0/0/9/9	-

There are no bond length outliers.

There are no bond angle outliers.

There are no chirality outliers.

All (18) torsion outliers are listed below:

Mol	Chain	Res	Type	Atoms
6	L	302	1PE	C24-C14-OH5-C25
6	L	302	1PE	C14-C24-OH4-C13
6	L	302	1PE	OH2-C12-C22-OH3
6	H	302	1PE	OH2-C12-C22-OH3
6	L	302	1PE	C13-C23-OH3-C22
6	L	302	1PE	OH7-C16-C26-OH6
6	H	302	1PE	OH7-C16-C26-OH6
6	H	302	1PE	OH5-C14-C24-OH4
6	L	302	1PE	OH5-C14-C24-OH4
6	H	302	1PE	OH4-C13-C23-OH3

*Continued on next page...*



*Continued from previous page...*

Mol	Chain	Res	Type	Atoms
6	H	302	1PE	C16-C26-OH6-C15
6	H	302	1PE	C12-C22-OH3-C23
6	H	302	1PE	C15-C25-OH5-C14
6	H	302	1PE	C13-C23-OH3-C22
6	H	302	1PE	C23-C13-OH4-C24
6	H	302	1PE	C14-C24-OH4-C13
6	H	302	1PE	OH6-C15-C25-OH5
6	L	302	1PE	OH6-C15-C25-OH5

There are no ring outliers.

4 monomers are involved in 32 short contacts:

Mol	Chain	Res	Type	Clashes	Symm-Clashes
6	L	302	1PE	22	0
5	A	304	144	2	0
6	H	302	1PE	7	0
5	H	301	144	1	0

## 5.7 Other polymers [i](#)

There are no such residues in this entry.

## 5.8 Polymer linkage issues [i](#)

There are no chain breaks in this entry.

## 6 Fit of model and data

### 6.1 Protein, DNA and RNA chains

In the following table, the column labelled ‘#RSRZ> 2’ contains the number (and percentage) of RSRZ outliers, followed by percent RSRZ outliers for the chain as percentile scores relative to all X-ray entries and entries of similar resolution. The OWAB column contains the minimum, median, 95<sup>th</sup> percentile and maximum values of the occupancy-weighted average B-factor per residue. The column labelled ‘Q< 0.9’ lists the number of (and percentage) of residues with an average occupancy less than 0.9.

Mol	Chain	Analysed	<RSRZ>	#RSRZ>2	OWAB(Å <sup>2</sup> )	Q<0.9
1	A	227/232 (97%)	-0.27	3 (1%) 77 80	8, 20, 42, 53	1 (0%)
1	H	215/232 (92%)	0.13	18 (8%) 11 10	15, 26, 54, 67	1 (0%)
2	B	208/210 (99%)	-0.39	1 (0%) 91 92	14, 21, 35, 52	0
2	L	209/210 (99%)	-0.39	1 (0%) 91 92	14, 20, 40, 61	0
All	All	859/884 (97%)	-0.23	23 (2%) 54 55	8, 22, 45, 67	2 (0%)

All (23) RSRZ outliers are listed below:

Mol	Chain	Res	Type	RSRZ
1	A	114	THR	17.6
1	H	114	THR	15.2
2	B	29	VAL	4.4
1	H	131	SER	3.5
1	H	162	ALA	3.5
1	H	212	ASP	3.5
1	H	197	THR	3.4
1	H	217	PRO	3.3
1	A	224	HIS	3.3
1	H	198	TYR	3.1
1	H	193	LEU	3.0
1	A	133	LYS	2.9
2	L	209	GLU	2.7
1	H	163	LEU	2.6
1	H	211	VAL	2.6
1	H	158	TRP	2.6
1	H	191	SER	2.6
1	H	196	GLN	2.5
1	H	214	ARG	2.4
1	H	205	LYS	2.3
1	H	119	SER	2.3

*Continued on next page...*

*Continued from previous page...*

Mol	Chain	Res	Type	RSRZ
1	H	150	PHE	2.2
1	H	189	PRO	2.2

## 6.2 Non-standard residues in protein, DNA, RNA chains [i](#)

There are no non-standard protein/DNA/RNA residues in this entry.

## 6.3 Carbohydrates [i](#)

There are no carbohydrates in this entry.

## 6.4 Ligands [i](#)

In the following table, the Atoms column lists the number of modelled atoms in the group and the number defined in the chemical component dictionary. The B-factors column lists the minimum, median, 95<sup>th</sup> percentile and maximum values of B factors of atoms in the group. The column labelled 'Q < 0.9' lists the number of atoms with occupancy less than 0.9.

Mol	Type	Chain	Res	Atoms	RSCC	RSR	B-factors(Å <sup>2</sup> )	Q < 0.9
6	1PE	H	302	16/16	0.72	0.37	22,32,36,39	16
6	1PE	L	302	16/16	0.74	0.31	14,28,34,38	16
5	144	H	301	8/8	0.77	0.27	23,29,34,36	8
5	144	A	304	8/8	0.83	0.34	13,21,23,30	8
3	SO4	L	301	5/5	0.89	0.30	36,38,41,42	5
4	GOL	A	303	6/6	0.91	0.26	10,11,16,18	6
3	SO4	B	301	5/5	0.92	0.21	37,39,40,44	5
4	GOL	B	302	6/6	0.95	0.10	24,26,29,30	0
3	SO4	A	302	5/5	0.97	0.20	10,14,16,17	5
3	SO4	A	301	5/5	0.99	0.24	10,12,13,13	5

## 6.5 Other polymers [i](#)

There are no such residues in this entry.