



Full wwPDB X-ray Structure Validation Report ⓘ

Mar 9, 2018 – 02:34 am GMT

PDB ID : 4JFV
Title : Crystal structure of a bacterial fucosidase with iminosugar inhibitor (2S,3S,4R,5S)-2-[N-(methylferrocene)]aminoethyl-5-methylpyrrolidine-3,4-diol
Authors : Wright, D.W.; Davies, G.J.
Deposited on : 2013-02-28
Resolution : 1.88 Å(reported)

This is a Full wwPDB X-ray Structure Validation Report for a publicly released PDB entry.

We welcome your comments at validation@mail.wwpdb.org

A user guide is available at

<https://www.wwpdb.org/validation/2017/XrayValidationReportHelp>

with specific help available everywhere you see the ⓘ symbol.

The following versions of software and data (see [references ⓘ](#)) were used in the production of this report:

MolProbity : 4.02b-467
Mogul : 1.7.3 (157068), CSD as539be (2018)
Xtriage (Phenix) : 1.13
EDS : trunk30967
Percentile statistics : 20171227.v01 (using entries in the PDB archive December 27th 2017)
Refmac : 5.8.0158
CCP4 : 7.0 (Gargrove)
Ideal geometry (proteins) : Engh & Huber (2001)
Ideal geometry (DNA, RNA) : Parkinson et al. (1996)
Validation Pipeline (wwPDB-VP) : trunk30967

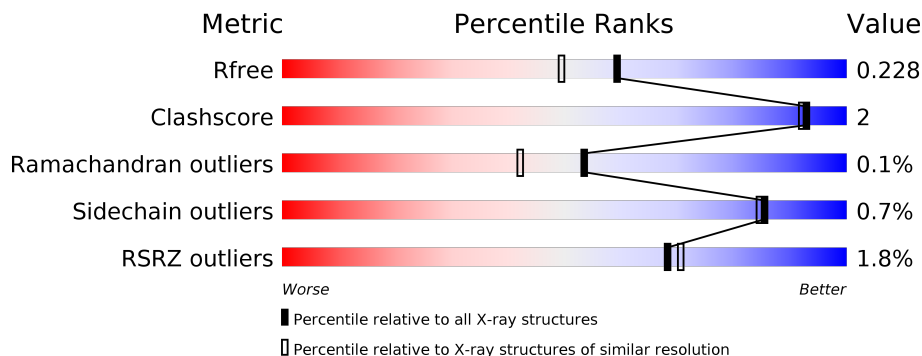
1 Overall quality at a glance

The following experimental techniques were used to determine the structure:

X-RAY DIFFRACTION

The reported resolution of this entry is 1.88 Å.

Percentile scores (ranging between 0-100) for global validation metrics of the entry are shown in the following graphic. The table shows the number of entries on which the scores are based.



Metric	Whole archive (#Entries)	Similar resolution (#Entries, resolution range(Å))
R_{free}	111664	8255 (1.90-1.86)
Clashscore	122126	9028 (1.90-1.86)
Ramachandran outliers	120053	8930 (1.90-1.86)
Sidechain outliers	120020	8930 (1.90-1.86)
RSRZ outliers	108989	8087 (1.90-1.86)

The table below summarises the geometric issues observed across the polymeric chains and their fit to the electron density. The red, orange, yellow and green segments on the lower bar indicate the fraction of residues that contain outliers for ≥ 3 , 2, 1 and 0 types of geometric quality criteria. A grey segment represents the fraction of residues that are not modelled. The numeric value for each fraction is indicated below the corresponding segment, with a dot representing fractions $\leq 5\%$. The upper red bar (where present) indicates the fraction of residues that have poor fit to the electron density. The numeric value is given above the bar.

Mol	Chain	Length	Quality of chain
1	A	450	<p>3% (poor fit), 92% (0-1 outliers), 5% (2-3 outliers), 2% (not modelled)</p>
1	B	450	<p>92% (0-1 outliers), 6% (2-3 outliers), 2% (not modelled)</p>
1	C	450	<p>0% (poor fit), 92% (0-1 outliers), 5% (2-3 outliers), 3% (not modelled)</p>
1	D	450	<p>3% (poor fit), 94% (0-1 outliers), 3% (2-3 outliers), 0% (not modelled)</p>

2 Entry composition [i](#)

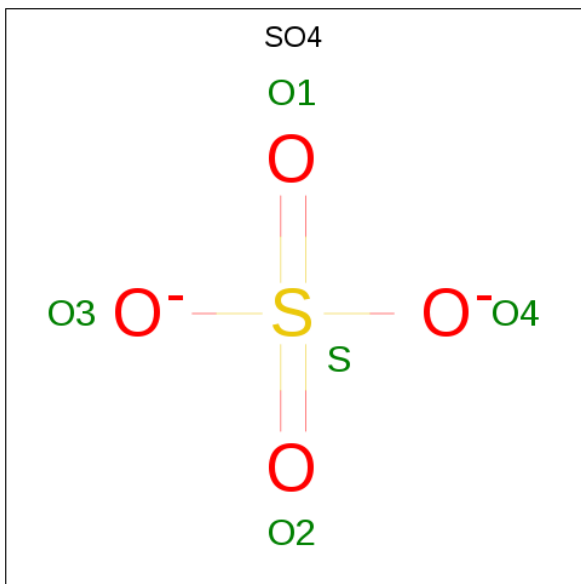
There are 5 unique types of molecules in this entry. The entry contains 15042 atoms, of which 0 are hydrogens and 0 are deuteriums.

In the tables below, the ZeroOcc column contains the number of atoms modelled with zero occupancy, the AltConf column contains the number of residues with at least one atom in alternate conformation and the Trace column contains the number of residues modelled with at most 2 atoms.

- Molecule 1 is a protein called alpha-L-fucosidase.

Mol	Chain	Residues	Atoms					ZeroOcc	AltConf	Trace
			Total	C	N	O	S			
1	A	439	Total 3501	C 2251	N 584	O 649	S 17	0	2	0
1	B	439	Total 3568	C 2294	N 602	O 655	S 17	0	2	0
1	C	438	Total 3531	C 2274	N 589	O 651	S 17	0	2	0
1	D	441	Total 3538	C 2277	N 588	O 656	S 17	0	1	0

- Molecule 2 is SULFATE ION (three-letter code: SO4) (formula: O₄S).



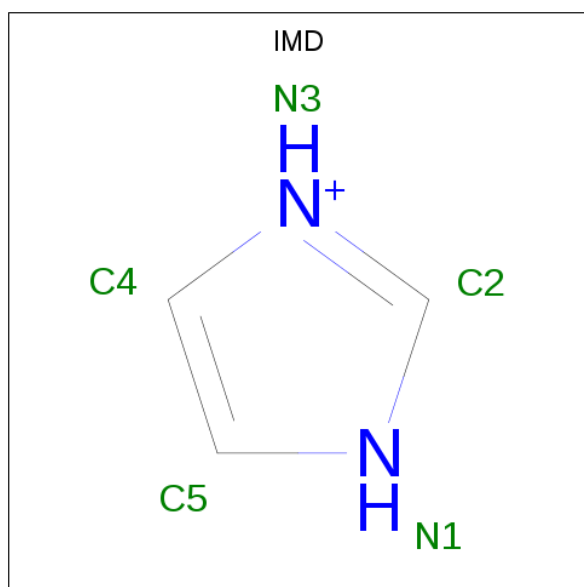
Mol	Chain	Residues	Atoms			ZeroOcc	AltConf
			Total	O	S		
2	A	1	Total 5	O 4	S 1	0	0
2	A	1	Total 5	O 4	S 1	0	0

Continued on next page...

Continued from previous page...

Mol	Chain	Residues	Atoms			ZeroOcc	AltConf
2	B	1	Total	O	S	0	0
			5	4	1		
2	C	1	Total	O	S	0	0
			5	4	1		
2	D	1	Total	O	S	0	0
			5	4	1		

- Molecule 3 is IMIDAZOLE (three-letter code: IMD) (formula: C₃H₅N₂).



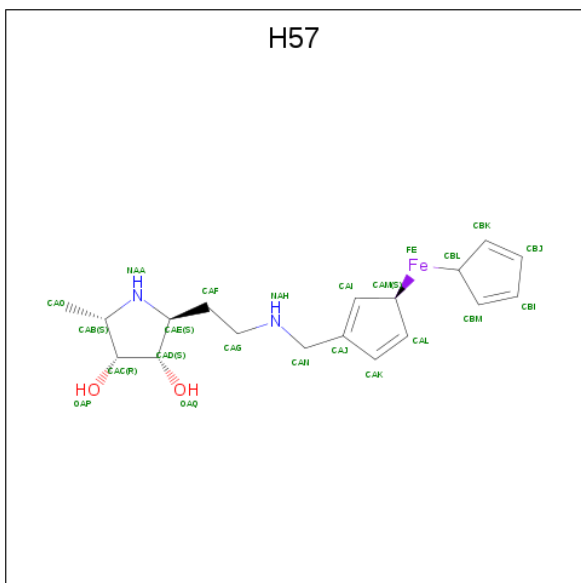
Mol	Chain	Residues	Atoms			ZeroOcc	AltConf
3	A	1	Total	C	N	0	0
			5	3	2		
3	A	1	Total	C	N	0	0
			5	3	2		
3	A	1	Total	C	N	0	0
			5	3	2		
3	A	1	Total	C	N	0	0
			5	3	2		
3	B	1	Total	C	N	0	0
			5	3	2		
3	B	1	Total	C	N	0	0
			5	3	2		
3	B	1	Total	C	N	0	0
			5	3	2		

Continued on next page...

Continued from previous page...

Mol	Chain	Residues	Atoms			ZeroOcc	AltConf
3	C	1	Total	C	N	0	0
			5	3	2		
3	D	1	Total	C	N	0	0
			5	3	2		
3	D	1	Total	C	N	0	0
			5	3	2		

- Molecule 4 is (3alpha)-[({2-[(2S,3S,4R,5S)-3,4-dihydroxy-5-methylpyrrolidin-2-yl]ethyl}amino)methyl]ferrocene (three-letter code: H57) (formula: C₁₈H₂₆FeN₂O₂).



Mol	Chain	Residues	Atoms				ZeroOcc	AltConf	
4	A	1	Total	C	Fe	N	O	0	0
			23	18	1	2	2		
4	B	1	Total	C	Fe	N	O	0	0
			23	18	1	2	2		
4	C	1	Total	C	Fe	N	O	0	0
			23	18	1	2	2		
4	D	1	Total	C	Fe	N	O	0	0
			23	18	1	2	2		

- Molecule 5 is water.

Mol	Chain	Residues	Atoms		ZeroOcc	AltConf
5	A	188	Total	O	0	0
			188	188		
5	B	240	Total	O	0	0
			240	240		

Continued on next page...

Continued from previous page...

Mol	Chain	Residues	Atoms		ZeroOcc	AltConf
5	C	156	Total 156	O 156	0	0
5	D	148	Total 148	O 148	0	0

ALA
LEU
THR

4 Data and refinement statistics

Property	Value	Source
Space group	P 1 21 1	Depositor
Cell constants a, b, c, α , β , γ	55.54Å 187.00Å 97.67Å 90.00° 94.19° 90.00°	Depositor
Resolution (Å)	97.41 – 1.88 38.88 – 1.88	Depositor EDS
% Data completeness (in resolution range)	96.6 (97.41-1.88) 96.7 (38.88-1.88)	Depositor EDS
R_{merge}	(Not available)	Depositor
R_{sym}	0.07	Depositor
$\langle I/\sigma(I) \rangle$ ¹	2.50 (at 1.88Å)	Xtrriage
Refinement program	REFMAC	Depositor
R, R_{free}	0.190 , 0.222 0.197 , 0.228	Depositor DCC
R_{free} test set	7806 reflections (5.03%)	wwPDB-VP
Wilson B-factor (Å ²)	25.4	Xtrriage
Anisotropy	0.321	Xtrriage
Bulk solvent k_{sol} (e/Å ³), B_{sol} (Å ²)	0.34 , 43.5	EDS
L-test for twinning ²	$\langle L \rangle = 0.50$, $\langle L^2 \rangle = 0.33$	Xtrriage
Estimated twinning fraction	No twinning to report.	Xtrriage
F_o, F_c correlation	0.95	EDS
Total number of atoms	15042	wwPDB-VP
Average B, all atoms (Å ²)	31.0	wwPDB-VP

Xtrriage's analysis on translational NCS is as follows: *The largest off-origin peak in the Patterson function is 3.43% of the height of the origin peak. No significant pseudotranslation is detected.*

¹Intensities estimated from amplitudes.

²Theoretical values of $\langle |L| \rangle$, $\langle L^2 \rangle$ for acentric reflections are 0.5, 0.333 respectively for untwinned datasets, and 0.375, 0.2 for perfectly twinned datasets.

5 Model quality [i](#)

5.1 Standard geometry [i](#)

Bond lengths and bond angles in the following residue types are not validated in this section: H57, IMD, SO4

The Z score for a bond length (or angle) is the number of standard deviations the observed value is removed from the expected value. A bond length (or angle) with $|Z| > 5$ is considered an outlier worth inspection. RMSZ is the root-mean-square of all Z scores of the bond lengths (or angles).

Mol	Chain	Bond lengths		Bond angles	
		RMSZ	# Z >5	RMSZ	# Z >5
1	A	0.86	0/3614	0.86	4/4920 (0.1%)
1	B	0.93	0/3681	0.89	6/4996 (0.1%)
1	C	0.84	0/3644	0.82	2/4952 (0.0%)
1	D	0.84	0/3648	0.81	3/4960 (0.1%)
All	All	0.87	0/14587	0.84	15/19828 (0.1%)

There are no bond length outliers.

All (15) bond angle outliers are listed below:

Mol	Chain	Res	Type	Atoms	Z	Observed(°)	Ideal(°)
1	A	385	ASP	CB-CG-OD1	8.01	125.51	118.30
1	B	385	ASP	CB-CG-OD1	6.97	124.57	118.30
1	B	336	ARG	NE-CZ-NH1	6.62	123.61	120.30
1	C	385	ASP	CB-CG-OD1	6.39	124.05	118.30
1	B	356	ASP	CB-CG-OD1	6.38	124.04	118.30
1	A	219	ARG	NE-CZ-NH1	6.23	123.42	120.30
1	D	105	ASP	CB-CG-OD1	6.04	123.74	118.30
1	D	58	ASP	CB-CG-OD1	5.86	123.57	118.30
1	D	385	ASP	CB-CG-OD1	5.79	123.51	118.30
1	A	385	ASP	CB-CG-OD2	-5.62	113.24	118.30
1	C	356	ASP	CB-CG-OD1	5.50	123.25	118.30
1	B	113	ASP	CB-CG-OD2	-5.37	113.47	118.30
1	B	289	ARG	NE-CZ-NH1	5.29	122.95	120.30
1	B	278	ARG	NE-CZ-NH1	5.29	122.94	120.30
1	A	113	ASP	CB-CG-OD1	5.05	122.84	118.30

There are no chirality outliers.

There are no planarity outliers.

5.2 Too-close contacts

In the following table, the Non-H and H(model) columns list the number of non-hydrogen atoms and hydrogen atoms in the chain respectively. The H(added) column lists the number of hydrogen atoms added and optimized by MolProbity. The Clashes column lists the number of clashes within the asymmetric unit, whereas Symm-Clashes lists symmetry related clashes.

Mol	Chain	Non-H	H(model)	H(added)	Clashes	Symm-Clashes
1	A	3501	0	3272	11	0
1	B	3568	0	3415	15	0
1	C	3531	0	3355	12	0
1	D	3538	0	3335	7	0
2	A	10	0	0	0	0
2	B	5	0	0	0	0
2	C	5	0	0	0	0
2	D	5	0	0	0	0
3	A	25	0	25	4	0
3	B	15	0	15	0	0
3	C	5	0	5	1	0
3	D	10	0	10	1	0
4	A	23	0	24	0	0
4	B	23	0	24	0	0
4	C	23	0	24	0	0
4	D	23	0	24	0	0
5	A	188	0	0	0	0
5	B	240	0	0	1	0
5	C	156	0	0	2	0
5	D	148	0	0	1	0
All	All	15042	0	13528	45	0

The all-atom clashscore is defined as the number of clashes found per 1000 atoms (including hydrogen atoms). The all-atom clashscore for this structure is 2.

All (45) close contacts within the same asymmetric unit are listed below, sorted by their clash magnitude.

Atom-1	Atom-2	Interatomic distance (Å)	Clash overlap (Å)
1:C:262:ARG:NH1	5:C:753:HOH:O	2.31	0.64
1:B:290[B]:ARG:CG	1:B:291:LEU:H	2.13	0.61
1:A:448:ASN:HA	3:A:506:IMD:N1	2.15	0.61
1:C:446:THR:HG22	1:C:449:GLU:HB3	1.83	0.61
1:B:446:THR:HG22	1:B:449:GLU:HB3	1.83	0.60
1:B:176:HIS:CG	1:B:225:ASP:HB3	2.38	0.59
1:D:176:HIS:CG	1:D:225:ASP:HB3	2.38	0.58

Continued on next page...

Continued from previous page...

Atom-1	Atom-2	Interatomic distance (Å)	Clash overlap (Å)
1:C:176:HIS:CG	1:C:225:ASP:HB3	2.39	0.57
1:D:379:LYS:HE2	1:D:434:LEU:HD11	1.86	0.57
1:B:290[B]:ARG:HG3	1:B:291:LEU:H	1.69	0.56
1:B:290[B]:ARG:CD	1:B:291:LEU:H	2.20	0.55
1:A:417:ARG:HH12	3:A:507:IMD:C2	2.20	0.54
1:A:120:MET:SD	3:A:503:IMD:H5	2.48	0.54
1:A:64:PHE:HE2	1:A:308[B]:CYS:HG	1.56	0.54
1:B:158:ARG:HD2	1:B:163:GLU:OE2	2.09	0.53
1:B:429:GLU:OE2	1:B:470:ARG:HD2	2.10	0.52
1:C:64:PHE:HE2	1:C:308[B]:CYS:HG	1.59	0.50
1:D:158:ARG:HD2	1:D:163:GLU:OE2	2.12	0.50
1:C:158:ARG:HD2	1:C:163:GLU:OE2	2.11	0.50
1:C:120:MET:SD	3:C:502:IMD:H4	2.52	0.49
1:D:448:ASN:HA	3:D:503:IMD:C5	2.43	0.49
1:A:176:HIS:CG	1:A:225:ASP:HB3	2.47	0.49
1:A:132:THR:HA	1:A:178:TYR:HB3	1.95	0.49
1:B:290[B]:ARG:CG	1:B:291:LEU:N	2.76	0.48
1:B:374:MET:HE1	1:B:381:VAL:HG11	1.95	0.48
1:D:116:LYS:HE2	5:D:669:HOH:O	2.13	0.48
1:C:289:ARG:HG2	5:C:713:HOH:O	2.11	0.48
1:B:132:THR:HA	1:B:178:TYR:HB3	1.97	0.47
1:A:374:MET:HE1	1:A:381:VAL:HG11	1.95	0.46
1:C:132:THR:HA	1:C:178:TYR:HB3	1.97	0.46
1:B:290[B]:ARG:HG3	1:B:291:LEU:N	2.31	0.46
1:C:374:MET:HE1	1:C:381:VAL:HG11	1.98	0.45
1:B:372:LYS:HE2	5:B:743:HOH:O	2.17	0.43
1:A:386:TYR:CZ	1:A:388:GLY:HA2	2.53	0.43
1:B:290[B]:ARG:HA	1:B:290[B]:ARG:HD2	1.47	0.43
1:B:447:ARG:O	1:B:448:ASN:HB2	2.18	0.43
1:A:399:ARG:HD3	3:A:504:IMD:C2	2.50	0.42
1:C:312:PRO:HG2	1:C:315:GLN:HB2	2.02	0.41
1:B:48:ARG:HB2	1:B:53:MET:HG2	2.02	0.41
1:A:312:PRO:HG3	1:A:322:TRP:CE2	2.56	0.41
1:D:178:TYR:C	1:D:178:TYR:CD1	2.93	0.41
1:D:312:PRO:HG3	1:D:322:TRP:CE2	2.56	0.41
1:C:312:PRO:HG3	1:C:322:TRP:CE2	2.55	0.40
1:A:48:ARG:HB2	1:A:53:MET:HG2	2.03	0.40
1:C:386:TYR:CZ	1:C:388:GLY:HA2	2.56	0.40

There are no symmetry-related clashes.

5.3 Torsion angles [i](#)

5.3.1 Protein backbone [i](#)

In the following table, the Percentiles column shows the percent Ramachandran outliers of the chain as a percentile score with respect to all X-ray entries followed by that with respect to entries of similar resolution.

The Analysed column shows the number of residues for which the backbone conformation was analysed, and the total number of residues.

Mol	Chain	Analysed	Favoured	Allowed	Outliers	Percentiles	
1	A	439/450 (98%)	430 (98%)	9 (2%)	0	100	100
1	B	439/450 (98%)	428 (98%)	11 (2%)	0	100	100
1	C	438/450 (97%)	427 (98%)	10 (2%)	1 (0%)	49	38
1	D	439/450 (98%)	430 (98%)	8 (2%)	1 (0%)	49	38
All	All	1755/1800 (98%)	1715 (98%)	38 (2%)	2 (0%)	53	42

All (2) Ramachandran outliers are listed below:

Mol	Chain	Res	Type
1	C	60	ARG
1	D	157	LYS

5.3.2 Protein sidechains [i](#)

In the following table, the Percentiles column shows the percent sidechain outliers of the chain as a percentile score with respect to all X-ray entries followed by that with respect to entries of similar resolution.

The Analysed column shows the number of residues for which the sidechain conformation was analysed, and the total number of residues.

Mol	Chain	Analysed	Rotameric	Outliers	Percentiles	
1	A	351/383 (92%)	347 (99%)	4 (1%)	76	73
1	B	366/383 (96%)	364 (100%)	2 (0%)	90	89
1	C	360/383 (94%)	358 (99%)	2 (1%)	87	87
1	D	359/383 (94%)	357 (99%)	2 (1%)	87	87
All	All	1436/1532 (94%)	1426 (99%)	10 (1%)	85	84

All (10) residues with a non-rotameric sidechain are listed below:

Mol	Chain	Res	Type
1	A	64	PHE
1	A	145	LYS
1	A	267	ASP
1	A	429	GLU
1	B	64	PHE
1	B	267	ASP
1	C	64	PHE
1	C	267	ASP
1	D	64	PHE
1	D	267	ASP

Some sidechains can be flipped to improve hydrogen bonding and reduce clashes. There are no such sidechains identified.

5.3.3 RNA [i](#)

There are no RNA molecules in this entry.

5.4 Non-standard residues in protein, DNA, RNA chains [i](#)

There are no non-standard protein/DNA/RNA residues in this entry.

5.5 Carbohydrates [i](#)

There are no carbohydrates in this entry.

5.6 Ligand geometry [i](#)

20 ligands are modelled in this entry.

In the following table, the Counts columns list the number of bonds (or angles) for which Mogul statistics could be retrieved, the number of bonds (or angles) that are observed in the model and the number of bonds (or angles) that are defined in the Chemical Component Dictionary. The Link column lists molecule types, if any, to which the group is linked. The Z score for a bond length (or angle) is the number of standard deviations the observed value is removed from the expected value. A bond length (or angle) with $|Z| > 2$ is considered an outlier worth inspection. RMSZ is the root-mean-square of all Z scores of the bond lengths (or angles).

Mol	Type	Chain	Res	Link	Bond lengths			Bond angles		
					Counts	RMSZ	$\# Z > 2$	Counts	RMSZ	$\# Z > 2$
2	SO4	A	501	-	4,4,4	0.59	0	6,6,6	0.65	0
2	SO4	A	502	-	4,4,4	0.70	0	6,6,6	0.72	0

Mol	Type	Chain	Res	Link	Bond lengths			Bond angles		
					Counts	RMSZ	# Z > 2	Counts	RMSZ	# Z > 2
3	IMD	A	503	-	3,5,5	0.81	0	4,5,5	0.45	0
3	IMD	A	504	-	3,5,5	0.46	0	4,5,5	0.35	0
3	IMD	A	505	-	3,5,5	0.25	0	4,5,5	0.73	0
3	IMD	A	506	-	3,5,5	0.29	0	4,5,5	0.65	0
3	IMD	A	507	-	3,5,5	0.15	0	4,5,5	0.67	0
4	H57	A	508	-	18,25,25	1.51	2 (11%)	13,34,34	1.94	3 (23%)
2	SO4	B	501	-	4,4,4	0.46	0	6,6,6	0.31	0
3	IMD	B	502	-	3,5,5	0.46	0	4,5,5	0.69	0
3	IMD	B	503	-	3,5,5	0.25	0	4,5,5	0.87	0
3	IMD	B	504	-	3,5,5	1.17	0	4,5,5	0.84	0
4	H57	B	505	-	18,25,25	1.45	2 (11%)	13,34,34	1.63	3 (23%)
2	SO4	C	501	-	4,4,4	0.53	0	6,6,6	0.45	0
3	IMD	C	502	-	3,5,5	0.45	0	4,5,5	0.22	0
4	H57	C	503	-	18,25,25	1.52	2 (11%)	13,34,34	2.49	4 (30%)
2	SO4	D	501	-	4,4,4	0.50	0	6,6,6	0.38	0
3	IMD	D	502	-	3,5,5	0.26	0	4,5,5	0.60	0
3	IMD	D	503	-	3,5,5	0.37	0	4,5,5	0.78	0
4	H57	D	504	-	18,25,25	1.70	4 (22%)	13,34,34	1.92	4 (30%)

In the following table, the Chirals column lists the number of chiral outliers, the number of chiral centers analysed, the number of these observed in the model and the number defined in the Chemical Component Dictionary. Similar counts are reported in the Torsion and Rings columns. '2' means no outliers of that kind were identified.

Mol	Type	Chain	Res	Link	Chirals	Torsions	Rings
2	SO4	A	501	-	-	0/0/0/0	0/0/0/0
2	SO4	A	502	-	-	0/0/0/0	0/0/0/0
3	IMD	A	503	-	-	0/0/0/0	0/1/1/1
3	IMD	A	504	-	-	0/0/0/0	0/1/1/1
3	IMD	A	505	-	-	0/0/0/0	0/1/1/1
3	IMD	A	506	-	-	0/0/0/0	0/1/1/1
3	IMD	A	507	-	-	0/0/0/0	0/1/1/1
4	H57	A	508	-	-	0/7/43/43	0/3/3/3
2	SO4	B	501	-	-	0/0/0/0	0/0/0/0
3	IMD	B	502	-	-	0/0/0/0	0/1/1/1
3	IMD	B	503	-	-	0/0/0/0	0/1/1/1
3	IMD	B	504	-	-	0/0/0/0	0/1/1/1
4	H57	B	505	-	-	0/7/43/43	0/3/3/3
2	SO4	C	501	-	-	0/0/0/0	0/0/0/0
3	IMD	C	502	-	-	0/0/0/0	0/1/1/1
4	H57	C	503	-	-	0/7/43/43	0/3/3/3
2	SO4	D	501	-	-	0/0/0/0	0/0/0/0

Continued on next page...

Continued from previous page...

Mol	Type	Chain	Res	Link	Chirals	Torsions	Rings
3	IMD	D	502	-	-	0/0/0/0	0/1/1/1
3	IMD	D	503	-	-	0/0/0/0	0/1/1/1
4	H57	D	504	-	-	0/7/43/43	0/3/3/3

All (10) bond length outliers are listed below:

Mol	Chain	Res	Type	Atoms	Z	Observed(Å)	Ideal(Å)
4	D	504	H57	CAD-CAE	2.54	1.55	1.53
4	D	504	H57	CAG-NAH	2.85	1.56	1.46
4	B	505	H57	CAI-CAJ	3.49	1.42	1.34
4	C	503	H57	CAI-CAJ	3.51	1.42	1.34
4	A	508	H57	CAI-CAJ	3.62	1.42	1.34
4	D	504	H57	CAI-CAJ	3.72	1.42	1.34
4	D	504	H57	CAK-CAL	3.92	1.41	1.33
4	A	508	H57	CAK-CAL	4.04	1.41	1.33
4	B	505	H57	CAK-CAL	4.12	1.41	1.33
4	C	503	H57	CAK-CAL	4.19	1.41	1.33

All (14) bond angle outliers are listed below:

Mol	Chain	Res	Type	Atoms	Z	Observed(°)	Ideal(°)
4	A	508	H57	CAD-CAC-CAB	-4.70	94.78	102.65
4	C	503	H57	CAL-CAK-CAJ	-4.06	104.45	111.21
4	B	505	H57	CAL-CAK-CAJ	-3.76	104.95	111.21
4	D	504	H57	CAD-CAC-CAB	-3.48	96.83	102.65
4	A	508	H57	CAL-CAK-CAJ	-3.47	105.43	111.21
4	D	504	H57	CAL-CAK-CAJ	-3.43	105.49	111.21
4	B	505	H57	CAD-CAC-CAB	-2.57	98.34	102.65
4	C	503	H57	CAD-CAC-CAB	-2.05	99.22	102.65
4	A	508	H57	OAP-CAC-CAD	2.05	118.39	111.83
4	D	504	H57	CAC-CAD-CAE	2.06	105.97	102.67
4	B	505	H57	CAO-CAB-NAA	2.43	114.54	111.70
4	C	503	H57	CAC-CAD-CAE	2.51	106.69	102.67
4	D	504	H57	CAN-NAH-CAG	3.35	118.65	113.33
4	C	503	H57	CAO-CAB-NAA	7.01	119.89	111.70

There are no chirality outliers.

There are no torsion outliers.

There are no ring outliers.

6 monomers are involved in 6 short contacts:

Mol	Chain	Res	Type	Clashes	Symm-Clashes
3	A	503	IMD	1	0
3	A	504	IMD	1	0
3	A	506	IMD	1	0
3	A	507	IMD	1	0
3	C	502	IMD	1	0
3	D	503	IMD	1	0

5.7 Other polymers [i](#)

There are no such residues in this entry.

5.8 Polymer linkage issues [i](#)

There are no chain breaks in this entry.

6 Fit of model and data [i](#)

6.1 Protein, DNA and RNA chains [i](#)

In the following table, the column labelled ‘#RSRZ > 2’ contains the number (and percentage) of RSRZ outliers, followed by percent RSRZ outliers for the chain as percentile scores relative to all X-ray entries and entries of similar resolution. The OWAB column contains the minimum, median, 95th percentile and maximum values of the occupancy-weighted average B-factor per residue. The column labelled ‘Q < 0.9’ lists the number of (and percentage) of residues with an average occupancy less than 0.9.

Mol	Chain	Analysed	<RSRZ>	#RSRZ>2	OWAB(Å ²)	Q<0.9
1	A	439/450 (97%)	0.09	14 (3%) 47 49	15, 31, 56, 84	1 (0%)
1	B	439/450 (97%)	-0.27	0 100 100	13, 24, 41, 60	1 (0%)
1	C	438/450 (97%)	-0.07	6 (1%) 75 77	19, 29, 46, 60	1 (0%)
1	D	441/450 (98%)	0.09	12 (2%) 54 56	20, 33, 54, 81	1 (0%)
All	All	1757/1800 (97%)	-0.04	32 (1%) 68 70	13, 29, 50, 84	4 (0%)

All (32) RSRZ outliers are listed below:

Mol	Chain	Res	Type	RSRZ
1	A	36	ILE	6.2
1	A	37	PRO	6.0
1	D	36	ILE	5.3
1	C	472	ALA	5.1
1	D	79	GLY	3.9
1	A	473	LYS	3.7
1	A	43	THR	3.7
1	A	38	LEU	3.3
1	A	472	ALA	3.2
1	D	472	ALA	3.1
1	D	37	PRO	3.1
1	A	193	ILE	3.1
1	C	36	ILE	3.0
1	C	471	ALA	2.9
1	A	40	TYR	2.8
1	D	474	GLY	2.7
1	D	77	TRP	2.7
1	A	191	TYR	2.6
1	D	276	ASN	2.6
1	A	471	ALA	2.5
1	C	37	PRO	2.5

Continued on next page...

Continued from previous page...

Mol	Chain	Res	Type	RSRZ
1	D	35	GLU	2.5
1	D	200	ILE	2.4
1	A	79	GLY	2.4
1	D	275	SER	2.4
1	D	43	THR	2.3
1	A	308[A]	CYS	2.3
1	A	45	GLU	2.2
1	D	191	TYR	2.1
1	A	269	GLY	2.1
1	C	191	TYR	2.1
1	C	43	THR	2.0

6.2 Non-standard residues in protein, DNA, RNA chains [i](#)

There are no non-standard protein/DNA/RNA residues in this entry.

6.3 Carbohydrates [i](#)

There are no carbohydrates in this entry.

6.4 Ligands [i](#)

In the following table, the Atoms column lists the number of modelled atoms in the group and the number defined in the chemical component dictionary. The B-factors column lists the minimum, median, 95th percentile and maximum values of B factors of atoms in the group. The column labelled 'Q< 0.9' lists the number of atoms with occupancy less than 0.9.

Mol	Type	Chain	Res	Atoms	RSCC	RSR	B-factors(Å ²)	Q<0.9
2	SO4	A	502	5/5	0.75	0.39	58,83,99,100	0
4	H57	C	503	23/23	0.82	0.21	25,82,147,151	0
3	IMD	B	504	5/5	0.82	0.19	28,29,31,32	0
4	H57	A	508	23/23	0.82	0.18	31,86,128,140	0
4	H57	B	505	23/23	0.83	0.21	23,75,141,145	0
3	IMD	A	504	5/5	0.84	0.18	40,41,47,49	0
3	IMD	A	507	5/5	0.84	0.17	51,51,55,55	0
2	SO4	D	501	5/5	0.84	0.23	75,78,90,97	0
3	IMD	D	503	5/5	0.89	0.22	51,54,58,59	0
3	IMD	B	503	5/5	0.93	0.12	41,42,50,52	0
2	SO4	A	501	5/5	0.93	0.18	57,63,69,70	0
3	IMD	A	506	5/5	0.93	0.25	50,51,53,54	0

Continued on next page...

Continued from previous page...

Mol	Type	Chain	Res	Atoms	RSCC	RSR	B-factors(\AA^2)	Q<0.9
4	H57	D	504	23/23	0.94	0.14	25,63,80,82	0
3	IMD	A	505	5/5	0.94	0.08	41,42,47,51	0
2	SO4	C	501	5/5	0.95	0.12	71,74,78,90	0
3	IMD	B	502	5/5	0.95	0.14	24,26,28,29	0
3	IMD	D	502	5/5	0.96	0.17	34,34,36,37	0
3	IMD	C	502	5/5	0.96	0.10	35,40,43,44	0
3	IMD	A	503	5/5	0.97	0.08	26,26,27,27	0
2	SO4	B	501	5/5	0.97	0.31	60,62,73,74	0

6.5 Other polymers [i](#)

There are no such residues in this entry.