



# Full wwPDB X-ray Structure Validation Report ⓘ

Mar 1, 2021 – 12:28 PM EST

PDB ID : 7JJ0  
Title : GTP-specific succinyl-CoA synthetase complexed with Mg-GMPPCP  
Authors : Huang, J.; Fraser, M.E.  
Deposited on : 2020-07-24  
Resolution : 2.25 Å(reported)

This is a Full wwPDB X-ray Structure Validation Report for a publicly released PDB entry.

We welcome your comments at [validation@mail.wwpdb.org](mailto:validation@mail.wwpdb.org)

A user guide is available at

<https://www.wwpdb.org/validation/2017/XrayValidationReportHelp>

with specific help available everywhere you see the ⓘ symbol.

---

The following versions of software and data (see [references ⓘ](#)) were used in the production of this report:

MolProbity : 4.02b-467  
Mogul : 1.8.5 (274361), CSD as541be (2020)  
Xtriage (Phenix) : 1.13  
EDS : 2.17.1  
buster-report : 1.1.7 (2018)  
Percentile statistics : 20191225.v01 (using entries in the PDB archive December 25th 2019)  
Refmac : 5.8.0158  
CCP4 : 7.0.044 (Gargrove)  
Ideal geometry (proteins) : Engh & Huber (2001)  
Ideal geometry (DNA, RNA) : Parkinson et al. (1996)  
Validation Pipeline (wwPDB-VP) : 2.17.1

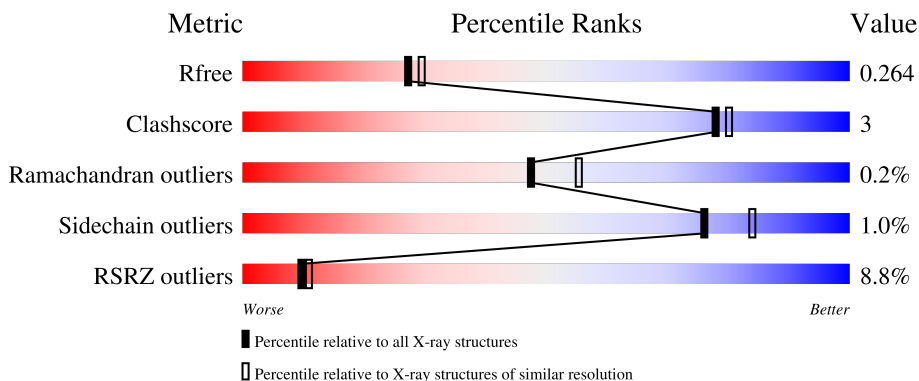
# 1 Overall quality at a glance

The following experimental techniques were used to determine the structure:

*X-RAY DIFFRACTION*

The reported resolution of this entry is 2.25 Å.

Percentile scores (ranging between 0-100) for global validation metrics of the entry are shown in the following graphic. The table shows the number of entries on which the scores are based.



Metric	Whole archive (#Entries)	Similar resolution (#Entries, resolution range(Å))
$R_{free}$	130704	1377 (2.26-2.26)
Clashscore	141614	1487 (2.26-2.26)
Ramachandran outliers	138981	1449 (2.26-2.26)
Sidechain outliers	138945	1450 (2.26-2.26)
RSRZ outliers	127900	1356 (2.26-2.26)

The table below summarises the geometric issues observed across the polymeric chains and their fit to the electron density. The red, orange, yellow and green segments of the lower bar indicate the fraction of residues that contain outliers for  $\geq 3$ , 2, 1 and 0 types of geometric quality criteria respectively. A grey segment represents the fraction of residues that are not modelled. The numeric value for each fraction is indicated below the corresponding segment, with a dot representing fractions  $\leq 5\%$ . The upper red bar (where present) indicates the fraction of residues that have poor fit to the electron density. The numeric value is given above the bar.

Mol	Chain	Length	Quality of chain
1	A	305	 2% (red), 92% (green), 5% (yellow), 1% (grey)
1	C	305	 2% (red), 94% (green), 1% (yellow), 1% (grey)
2	B	395	 16% (red), 90% (green), 9% (yellow), 1% (grey)
2	D	395	 12% (red), 86% (green), 10% (yellow), 1% (grey)

## 2 Entry composition

There are 5 unique types of molecules in this entry. The entry contains 20808 atoms, of which 10433 are hydrogens and 0 are deuteriums.

In the tables below, the ZeroOcc column contains the number of atoms modelled with zero occupancy, the AltConf column contains the number of residues with at least one atom in alternate conformation and the Trace column contains the number of residues modelled with at most 2 atoms.

- Molecule 1 is a protein called Succinate–CoA ligase [ADP/GDP-forming] subunit alpha, mitochondrial.

Mol	Chain	Residues	Atoms						ZeroOcc	AltConf	Trace
			Total	C	H	N	O	S			
1	A	296	4425	1384	2233	384	413	11	0	1	0
1	C	297	4428	1386	2233	385	414	10	0	0	0

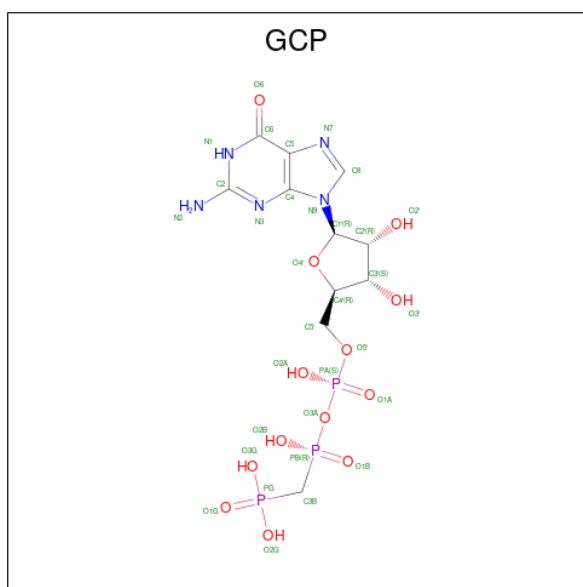
- Molecule 2 is a protein called Succinate–CoA ligase [GDP-forming] subunit beta, mitochondrial.

Mol	Chain	Residues	Atoms						ZeroOcc	AltConf	Trace
			Total	C	H	N	O	S			
2	B	393	5993	1876	3023	502	578	14	0	0	0
2	D	382	5808	1818	2926	488	562	14	0	0	0

There are 2 discrepancies between the modelled and reference sequences:

Chain	Residue	Modelled	Actual	Comment	Reference
B	1	MET	-	initiating methionine	UNP P53590
D	1	MET	-	initiating methionine	UNP P53590

- Molecule 3 is PHOSPHOMETHYLPHOSPHONIC ACID GUANYLATE ESTER (three-letter code: GCP) (formula: C<sub>11</sub>H<sub>18</sub>N<sub>5</sub>O<sub>13</sub>P<sub>3</sub>) (labeled as "Ligand of Interest" by depositor).



Mol	Chain	Residues	Atoms					ZeroOcc	AltConf	
			Total	C	H	N	O			P
3	B	1	50	11	18	5	13	3	0	0

- Molecule 4 is MAGNESIUM ION (three-letter code: MG) (formula: Mg).

Mol	Chain	Residues	Atoms		ZeroOcc	AltConf
			Total	Mg		
4	B	1	1	1	0	0

- Molecule 5 is water.

Mol	Chain	Residues	Atoms		ZeroOcc	AltConf
			Total	O		
5	A	38	38	38	0	0
5	B	9	9	9	0	0
5	C	42	42	42	0	0
5	D	14	14	14	0	0

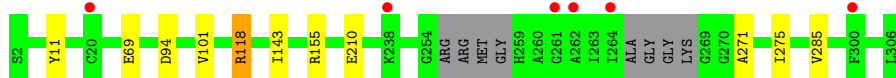
### 3 Residue-property plots [i](#)

These plots are drawn for all protein, RNA, DNA and oligosaccharide chains in the entry. The first graphic for a chain summarises the proportions of the various outlier classes displayed in the second graphic. The second graphic shows the sequence view annotated by issues in geometry and electron density. Residues are color-coded according to the number of geometric quality criteria for which they contain at least one outlier: green = 0, yellow = 1, orange = 2 and red = 3 or more. A red dot above a residue indicates a poor fit to the electron density ( $RSRZ > 2$ ). Stretches of 2 or more consecutive residues without any outlier are shown as a green connector. Residues present in the sample, but not in the model, are shown in grey.

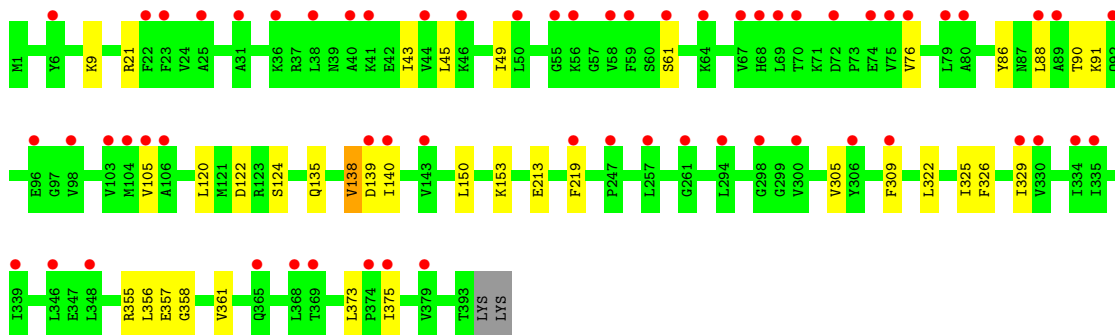
- Molecule 1: Succinate–CoA ligase [ADP/GDP-forming] subunit alpha, mitochondrial



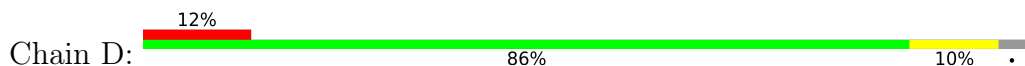
- Molecule 1: Succinate–CoA ligase [ADP/GDP-forming] subunit alpha, mitochondrial

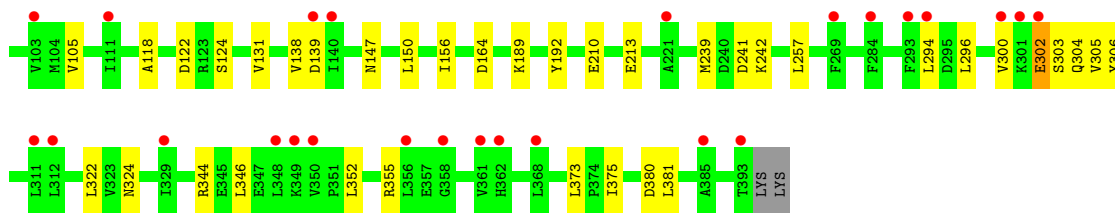


- Molecule 2: Succinate–CoA ligase [GDP-forming] subunit beta, mitochondrial



- Molecule 2: Succinate–CoA ligase [GDP-forming] subunit beta, mitochondrial





## 4 Data and refinement statistics

Property	Value	Source
Space group	P 32	Depositor
Cell constants a, b, c, $\alpha$ , $\beta$ , $\gamma$	99.31Å 99.31Å 133.51Å 90.00° 90.00° 120.00°	Depositor
Resolution (Å)	86.01 – 2.25 86.01 – 2.25	Depositor EDS
% Data completeness (in resolution range)	99.7 (86.01-2.25) 99.7 (86.01-2.25)	Depositor EDS
$R_{merge}$	0.14	Depositor
$R_{sym}$	(Not available)	Depositor
$\langle I/\sigma(I) \rangle$ <sup>1</sup>	1.04 (at 2.25Å)	Xtrriage
Refinement program	PHENIX dev_3885	Depositor
R, $R_{free}$	0.235 , 0.265 0.234 , 0.264	Depositor DCC
$R_{free}$ test set	3528 reflections (5.07%)	wwPDB-VP
Wilson B-factor (Å <sup>2</sup> )	52.1	Xtrriage
Anisotropy	0.214	Xtrriage
Bulk solvent $k_{sol}$ (e/Å <sup>3</sup> ), $B_{sol}$ (Å <sup>2</sup> )	0.39 , 37.8	EDS
L-test for twinning <sup>2</sup>	$\langle  L  \rangle = 0.48$ , $\langle L^2 \rangle = 0.31$	Xtrriage
Estimated twinning fraction	0.017 for -h,-k,l 0.066 for h,-h-k,-l 0.030 for -k,-h,-l	Xtrriage
$F_o, F_c$ correlation	0.94	EDS
Total number of atoms	20808	wwPDB-VP
Average B, all atoms (Å <sup>2</sup> )	74.0	wwPDB-VP

Xtrriage's analysis on translational NCS is as follows: *The largest off-origin peak in the Patterson function is 2.91% of the height of the origin peak. No significant pseudotranslation is detected.*

<sup>1</sup>Intensities estimated from amplitudes.

<sup>2</sup>Theoretical values of  $\langle |L| \rangle$ ,  $\langle L^2 \rangle$  for acentric reflections are 0.5, 0.333 respectively for untwinned datasets, and 0.375, 0.2 for perfectly twinned datasets.

## 5 Model quality [i](#)

### 5.1 Standard geometry [i](#)

Bond lengths and bond angles in the following residue types are not validated in this section: GCP, MG

The Z score for a bond length (or angle) is the number of standard deviations the observed value is removed from the expected value. A bond length (or angle) with  $|Z| > 5$  is considered an outlier worth inspection. RMSZ is the root-mean-square of all Z scores of the bond lengths (or angles).

Mol	Chain	Bond lengths		Bond angles	
		RMSZ	# Z  >5	RMSZ	# Z  >5
1	A	0.25	0/2237	0.42	0/3025
1	C	0.25	0/2235	0.42	0/3022
2	B	0.25	0/3007	0.41	0/4059
2	D	0.25	0/2915	0.41	0/3929
All	All	0.25	0/10394	0.41	0/14035

There are no bond length outliers.

There are no bond angle outliers.

There are no chirality outliers.

There are no planarity outliers.

### 5.2 Too-close contacts [i](#)

In the following table, the Non-H and H(model) columns list the number of non-hydrogen atoms and hydrogen atoms in the chain respectively. The H(added) column lists the number of hydrogen atoms added and optimized by MolProbity. The Clashes column lists the number of clashes within the asymmetric unit, whereas Symm-Clashes lists symmetry-related clashes.

Mol	Chain	Non-H	H(model)	H(added)	Clashes	Symm-Clashes
1	A	2192	2233	2231	8	0
1	C	2195	2233	2233	7	0
2	B	2970	3023	3023	23	0
2	D	2882	2926	2926	24	0
3	B	32	18	14	0	0
4	B	1	0	0	0	0
5	A	38	0	0	0	0
5	B	9	0	0	0	0
5	C	42	0	0	1	0

*Continued on next page...*



*Continued from previous page...*

Mol	Chain	Non-H	H(model)	H(added)	Clashes	Symm-Clashes
5	D	14	0	0	1	0
All	All	10375	10433	10427	60	0

The all-atom clashscore is defined as the number of clashes found per 1000 atoms (including hydrogen atoms). The all-atom clashscore for this structure is 3.

All (60) close contacts within the same asymmetric unit are listed below, sorted by their clash magnitude.

Atom-1	Atom-2	Interatomic distance (Å)	Clash overlap (Å)
2:B:135:GLN:HG3	2:B:150:LEU:HD13	1.71	0.72
1:A:29:THR:HG22	1:A:55:HIS:NE2	2.06	0.71
1:A:264:ILE:HG21	2:B:153:LYS:HD3	1.78	0.66
2:D:138:VAL:HG12	2:D:139:ASP:H	1.62	0.64
1:C:94:ASP:OD1	1:C:118:ARG:NH1	2.27	0.64
2:D:147:ASN:HB3	2:D:150:LEU:HD13	1.81	0.63
2:D:296:LEU:HD21	2:D:300:VAL:HG13	1.83	0.61
2:D:302:GLU:O	2:D:305:VAL:HG12	2.01	0.60
1:A:161:ARG:NH1	1:A:217:GLU:O	2.35	0.60
1:A:25:GLY:O	1:A:29:THR:HG23	2.02	0.59
1:C:271:ALA:O	1:C:275:ILE:HD12	2.02	0.58
1:A:271:ALA:O	1:A:275:ILE:HD12	2.03	0.58
2:D:324:ASN:ND2	2:D:381:LEU:HD21	2.19	0.57
2:D:296:LEU:HD11	2:D:304:GLN:NE2	2.20	0.56
2:B:357:GLU:HA	2:B:361:VAL:HG21	1.89	0.54
2:D:164:ASP:OD1	2:D:189:LYS:NZ	2.36	0.54
2:B:122:ASP:OD2	2:B:124:SER:OG	2.23	0.54
2:B:305:VAL:O	2:B:309:PHE:CD2	2.62	0.53
2:B:9:LYS:NZ	2:B:219:PHE:O	2.35	0.51
2:B:213:GLU:OE1	2:B:213:GLU:N	2.43	0.51
2:B:45:LEU:HD13	2:B:76:VAL:HG13	1.94	0.49
1:C:69:GLU:OE2	5:C:401:HOH:O	2.20	0.49
2:D:118:ALA:N	2:D:131:VAL:O	2.46	0.49
2:D:241:ASP:OD1	2:D:242:LYS:N	2.45	0.49
2:D:6:TYR:CD2	2:D:24:VAL:HG11	2.48	0.49
2:D:373:LEU:O	2:D:375:ILE:N	2.46	0.49
2:D:122:ASP:OD2	2:D:124:SER:OG	2.28	0.48
2:D:355:ARG:HE	2:D:380:ASP:HA	1.78	0.48
2:B:329:ILE:HD12	2:B:329:ILE:N	2.29	0.48
2:B:90:THR:OG1	2:B:91:LYS:N	2.47	0.48
2:B:105:VAL:O	2:B:105:VAL:HG23	2.13	0.48
2:D:306:TYR:CZ	2:D:346:LEU:HD21	2.50	0.47

*Continued on next page...*

Continued from previous page...

Atom-1	Atom-2	Interatomic distance (Å)	Clash overlap (Å)
1:C:275:ILE:HG23	1:C:285:VAL:HG11	1.96	0.46
2:D:213:GLU:OE1	2:D:213:GLU:N	2.44	0.46
1:A:259:HIS:ND1	2:B:140:ILE:HG22	2.30	0.46
2:B:43:ILE:HD12	2:B:76:VAL:HG21	1.97	0.45
2:D:3:LEU:HD13	2:D:239:MET:HE3	1.98	0.45
2:B:138:VAL:HG12	2:B:139:ASP:H	1.82	0.45
2:D:156:ILE:HG21	2:D:192:TYR:CZ	2.52	0.45
1:C:101:VAL:HG23	1:C:101:VAL:O	2.16	0.44
2:B:49:ILE:HD13	2:B:88:LEU:HD23	1.99	0.44
2:B:91:LYS:NZ	2:B:139:ASP:OD1	2.48	0.44
2:B:322:LEU:C	2:B:322:LEU:HD23	2.39	0.43
2:D:344:ARG:HG2	2:D:373:LEU:HD21	2.00	0.43
1:C:101:VAL:HG21	1:C:143:ILE:HG22	2.01	0.43
1:C:155:ARG:NE	1:C:210:GLU:OE1	2.31	0.43
2:D:210:GLU:OE2	5:D:401:HOH:O	2.22	0.42
2:D:257:LEU:HD23	2:D:294:LEU:HD21	2.02	0.42
1:A:107:ILE:HD12	1:A:130:PRO:CB	2.50	0.42
2:D:105:VAL:HG13	2:D:105:VAL:O	2.20	0.42
2:D:352:LEU:HD23	2:D:375:ILE:HG12	2.02	0.42
2:B:305:VAL:O	2:B:309:PHE:HD2	2.03	0.42
2:D:257:LEU:HD23	2:D:294:LEU:CD2	2.49	0.42
2:D:322:LEU:C	2:D:322:LEU:HD23	2.40	0.42
1:A:155:ARG:NH2	1:A:210:GLU:OE1	2.42	0.41
2:B:120:LEU:N	2:B:120:LEU:HD23	2.36	0.41
2:B:43:ILE:HD12	2:B:76:VAL:CG2	2.50	0.41
2:B:325:ILE:HB	2:B:356:LEU:HD23	2.02	0.41
2:B:373:LEU:O	2:B:375:ILE:N	2.53	0.41
2:B:61:SER:HB3	2:B:86:TYR:CE1	2.55	0.40

There are no symmetry-related clashes.

## 5.3 Torsion angles [\(i\)](#)

### 5.3.1 Protein backbone [\(i\)](#)

In the following table, the Percentiles column shows the percent Ramachandran outliers of the chain as a percentile score with respect to all X-ray entries followed by that with respect to entries of similar resolution.

The Analysed column shows the number of residues for which the backbone conformation was analysed, and the total number of residues.

Mol	Chain	Analysed	Favoured	Allowed	Outliers	Percentiles	
1	A	291/305 (95%)	289 (99%)	2 (1%)	0	100	100
1	C	291/305 (95%)	288 (99%)	3 (1%)	0	100	100
2	B	391/395 (99%)	371 (95%)	18 (5%)	2 (0%)	29	29
2	D	376/395 (95%)	357 (95%)	18 (5%)	1 (0%)	41	46
All	All	1349/1400 (96%)	1305 (97%)	41 (3%)	3 (0%)	47	55

All (3) Ramachandran outliers are listed below:

Mol	Chain	Res	Type
2	B	138	VAL
2	B	358	GLY
2	D	53	GLY

### 5.3.2 Protein sidechains [i](#)

In the following table, the Percentiles column shows the percent sidechain outliers of the chain as a percentile score with respect to all X-ray entries followed by that with respect to entries of similar resolution.

The Analysed column shows the number of residues for which the sidechain conformation was analysed, and the total number of residues.

Mol	Chain	Analysed	Rotameric	Outliers	Percentiles	
1	A	235/238 (99%)	232 (99%)	3 (1%)	69	79
1	C	234/238 (98%)	232 (99%)	2 (1%)	78	86
2	B	317/319 (99%)	314 (99%)	3 (1%)	78	86
2	D	306/319 (96%)	303 (99%)	3 (1%)	76	84
All	All	1092/1114 (98%)	1081 (99%)	11 (1%)	76	84

All (11) residues with a non-rotameric sidechain are listed below:

Mol	Chain	Res	Type
1	A	11	TYR
1	A	14	LYS
1	A	118	ARG
2	B	21	ARG
2	B	326	PHE
2	B	355	ARG
1	C	11	TYR
1	C	118	ARG

*Continued on next page...*

*Continued from previous page...*

Mol	Chain	Res	Type
2	D	21	ARG
2	D	302	GLU
2	D	303	SER

Sometimes sidechains can be flipped to improve hydrogen bonding and reduce clashes. All (1) such sidechains are listed below:

Mol	Chain	Res	Type
2	B	68	HIS

### 5.3.3 RNA [i](#)

There are no RNA molecules in this entry.

## 5.4 Non-standard residues in protein, DNA, RNA chains [i](#)

There are no non-standard protein/DNA/RNA residues in this entry.

## 5.5 Carbohydrates [i](#)

There are no monosaccharides in this entry.

## 5.6 Ligand geometry [i](#)

Of 2 ligands modelled in this entry, 1 is monoatomic - leaving 1 for Mogul analysis.

In the following table, the Counts columns list the number of bonds (or angles) for which Mogul statistics could be retrieved, the number of bonds (or angles) that are observed in the model and the number of bonds (or angles) that are defined in the Chemical Component Dictionary. The Link column lists molecule types, if any, to which the group is linked. The Z score for a bond length (or angle) is the number of standard deviations the observed value is removed from the expected value. A bond length (or angle) with  $|Z| > 2$  is considered an outlier worth inspection. RMSZ is the root-mean-square of all Z scores of the bond lengths (or angles).

Mol	Type	Chain	Res	Link	Bond lengths			Bond angles		
					Counts	RMSZ	$\# Z  > 2$	Counts	RMSZ	$\# Z  > 2$
3	GCP	B	401	4	26,34,34	1.18	1 (3%)	31,54,54	0.90	2 (6%)

In the following table, the Chirals column lists the number of chiral outliers, the number of chiral centers analysed, the number of these observed in the model and the number defined in the

Chemical Component Dictionary. Similar counts are reported in the Torsion and Rings columns. '-' means no outliers of that kind were identified.

Mol	Type	Chain	Res	Link	Chirals	Torsions	Rings
3	GCP	B	401	4	-	7/18/38/38	0/3/3/3

All (1) bond length outliers are listed below:

Mol	Chain	Res	Type	Atoms	Z	Observed(Å)	Ideal(Å)
3	B	401	GCP	C5-C6	-5.39	1.43	1.52

All (2) bond angle outliers are listed below:

Mol	Chain	Res	Type	Atoms	Z	Observed(°)	Ideal(°)
3	B	401	GCP	C5-C6-N1	-3.03	114.45	118.19
3	B	401	GCP	C4-C5-N7	2.89	106.28	102.46

There are no chirality outliers.

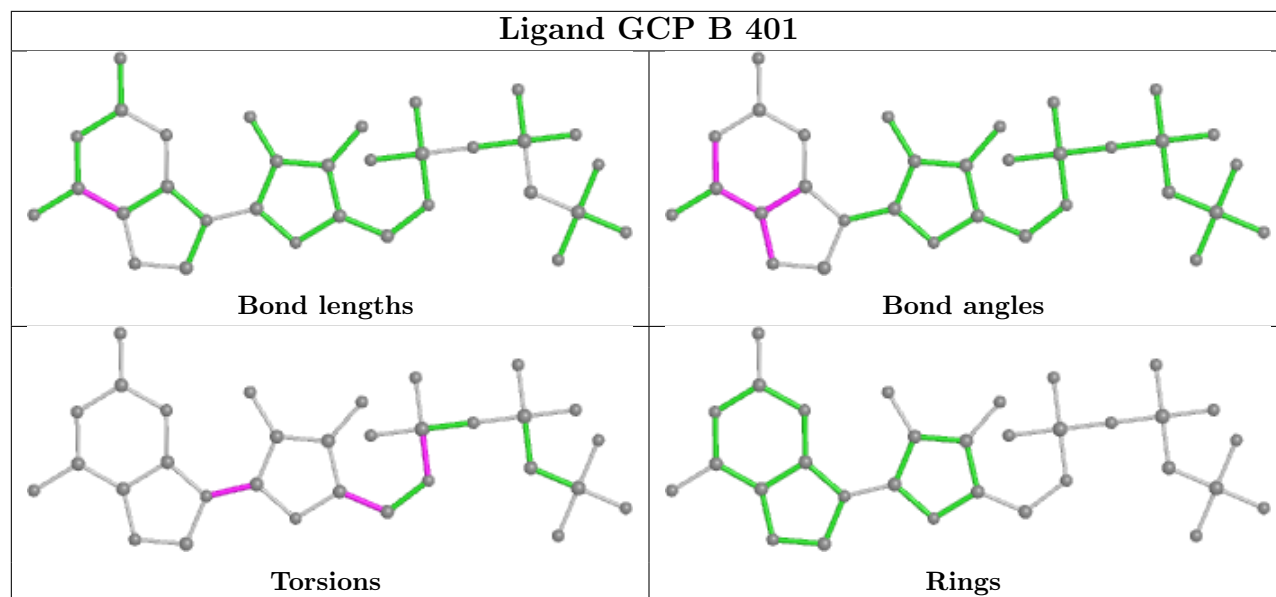
All (7) torsion outliers are listed below:

Mol	Chain	Res	Type	Atoms
3	B	401	GCP	C5'-O5'-PA-O3A
3	B	401	GCP	C5'-O5'-PA-O1A
3	B	401	GCP	C5'-O5'-PA-O2A
3	B	401	GCP	O4'-C4'-C5'-O5'
3	B	401	GCP	O4'-C1'-N9-C4
3	B	401	GCP	C2'-C1'-N9-C8
3	B	401	GCP	C2'-C1'-N9-C4

There are no ring outliers.

No monomer is involved in short contacts.

The following is a two-dimensional graphical depiction of Mogul quality analysis of bond lengths, bond angles, torsion angles, and ring geometry for all instances of the Ligand of Interest. In addition, ligands with molecular weight > 250 and outliers as shown on the validation Tables will also be included. For torsion angles, if less than 5% of the Mogul distribution of torsion angles is within 10 degrees of the torsion angle in question, then that torsion angle is considered an outlier. Any bond that is central to one or more torsion angles identified as an outlier by Mogul will be highlighted in the graph. For rings, the root-mean-square deviation (RMSD) between the ring in question and similar rings identified by Mogul is calculated over all ring torsion angles. If the average RMSD is greater than 60 degrees and the minimal RMSD between the ring in question and any Mogul-identified rings is also greater than 60 degrees, then that ring is considered an outlier. The outliers are highlighted in purple. The color gray indicates Mogul did not find sufficient equivalents in the CSD to analyse the geometry.



## 5.7 Other polymers [i](#)

There are no such residues in this entry.

## 5.8 Polymer linkage issues [i](#)

There are no chain breaks in this entry.

## 6 Fit of model and data

### 6.1 Protein, DNA and RNA chains

In the following table, the column labelled ‘#RSRZ > 2’ contains the number (and percentage) of RSRZ outliers, followed by percent RSRZ outliers for the chain as percentile scores relative to all X-ray entries and entries of similar resolution. The OWAB column contains the minimum, median, 95<sup>th</sup> percentile and maximum values of the occupancy-weighted average B-factor per residue. The column labelled ‘Q < 0.9’ lists the number of (and percentage) of residues with an average occupancy less than 0.9.

Mol	Chain	Analysed	<RSRZ>	#RSRZ>2	OWAB(Å <sup>2</sup> )	Q<0.9
1	A	296/305 (97%)	0.38	6 (2%) 65 68	36, 51, 77, 94	0
1	C	297/305 (97%)	0.32	6 (2%) 65 68	38, 55, 85, 100	0
2	B	393/395 (99%)	0.86	62 (15%) 2 1	40, 77, 114, 124	0
2	D	382/395 (96%)	0.75	46 (12%) 4 3	40, 74, 104, 119	0
All	All	1368/1400 (97%)	0.61	120 (8%) 10 11	36, 62, 108, 124	0

All (120) RSRZ outliers are listed below:

Mol	Chain	Res	Type	RSRZ
2	B	300	VAL	6.3
2	B	298	GLY	6.0
2	B	56	LYS	6.0
2	B	75	VAL	5.9
2	B	339	ILE	5.8
2	D	348	LEU	5.8
2	D	28	ALA	5.6
2	B	25	ALA	5.5
2	D	302	GLU	5.5
2	B	38	LEU	5.3
2	D	36	LYS	5.1
2	B	55	GLY	4.8
2	B	41	LYS	4.8
2	B	69	LEU	4.7
2	B	329	ILE	4.5
2	B	74	GLU	4.5
2	B	31	ALA	4.4
2	B	143	VAL	4.4
2	B	103	VAL	4.4
2	D	41	LYS	4.4
2	D	393	THR	4.3

*Continued on next page...*

*Continued from previous page...*

<b>Mol</b>	<b>Chain</b>	<b>Res</b>	<b>Type</b>	<b>RSRZ</b>
2	B	346	LEU	4.2
1	A	264	ILE	4.1
2	B	76	VAL	4.1
2	D	300	VAL	4.0
2	B	58	VAL	4.0
2	D	53	GLY	3.9
1	C	264	ILE	3.9
2	B	106	ALA	3.9
2	D	38	LEU	3.7
2	B	334	ILE	3.7
2	B	335	ILE	3.6
2	D	32	LEU	3.5
2	D	301	LYS	3.5
2	B	306	TYR	3.4
2	D	78	GLN	3.4
2	B	67	VAL	3.4
2	B	79	LEU	3.4
2	B	36	LYS	3.2
2	B	61	SER	3.2
1	A	238	LYS	3.2
2	D	88	LEU	3.2
2	B	40	ALA	3.2
2	B	44	VAL	3.1
2	B	64	LYS	3.1
2	D	21	ARG	3.1
2	D	140	ILE	3.1
2	B	70	THR	3.0
2	B	88	LEU	3.0
2	B	50	LEU	3.0
2	B	379	VAL	3.0
2	B	369	THR	3.0
2	B	104	MET	2.9
2	B	368	LEU	2.9
2	D	64	LYS	2.9
2	B	96	GLU	2.9
2	B	92	GLN	2.8
2	D	84	ILE	2.8
2	D	52	GLY	2.8
2	D	312	LEU	2.7
2	D	356	LEU	2.7
2	B	6	TYR	2.7
2	D	269	PHE	2.7

*Continued on next page...*



*Continued from previous page...*

<b>Mol</b>	<b>Chain</b>	<b>Res</b>	<b>Type</b>	<b>RSRZ</b>
2	B	80	ALA	2.7
2	B	105	VAL	2.6
2	D	92	GLN	2.6
2	B	72	ASP	2.6
2	D	82	GLN	2.6
2	B	261	GLY	2.6
2	B	309	PHE	2.6
2	D	100	VAL	2.6
2	D	221	ALA	2.6
2	D	311	LEU	2.5
1	C	300	PHE	2.5
2	D	139	ASP	2.5
2	D	49	ILE	2.5
2	B	365	GLN	2.5
2	B	330	VAL	2.5
1	C	262	ALA	2.5
2	B	22	PHE	2.4
2	B	59	PHE	2.4
2	D	358	GLY	2.4
2	B	374	PRO	2.4
2	B	23	PHE	2.4
2	D	54	ARG	2.4
2	D	362	HIS	2.4
2	B	139	ASP	2.4
2	D	284	PHE	2.4
2	B	89	ALA	2.4
2	B	98	VAL	2.4
2	D	103	VAL	2.4
2	B	348	LEU	2.3
2	D	349	LYS	2.3
2	B	257	LEU	2.3
2	B	68	HIS	2.3
2	D	368	LEU	2.3
2	D	39	ASN	2.3
2	B	294	LEU	2.2
2	D	385	ALA	2.2
2	B	46	LYS	2.2
2	D	58	VAL	2.2
1	C	238	LYS	2.2
2	D	294	LEU	2.2
1	A	263	ILE	2.1
2	D	111	ILE	2.1

*Continued on next page...*

*Continued from previous page...*

Mol	Chain	Res	Type	RSRZ
1	C	20	CYS	2.1
1	C	261	GLY	2.1
2	B	140	ILE	2.1
2	D	37	ARG	2.1
2	D	350	VAL	2.1
1	A	237	PRO	2.1
2	B	247	PRO	2.1
1	A	275	ILE	2.1
2	D	329	ILE	2.1
2	D	86	TYR	2.1
2	D	293	PHE	2.1
2	B	375	ILE	2.0
1	A	262	ALA	2.0
2	D	361	VAL	2.0
2	B	219	PHE	2.0

## 6.2 Non-standard residues in protein, DNA, RNA chains [i](#)

There are no non-standard protein/DNA/RNA residues in this entry.

## 6.3 Carbohydrates [i](#)

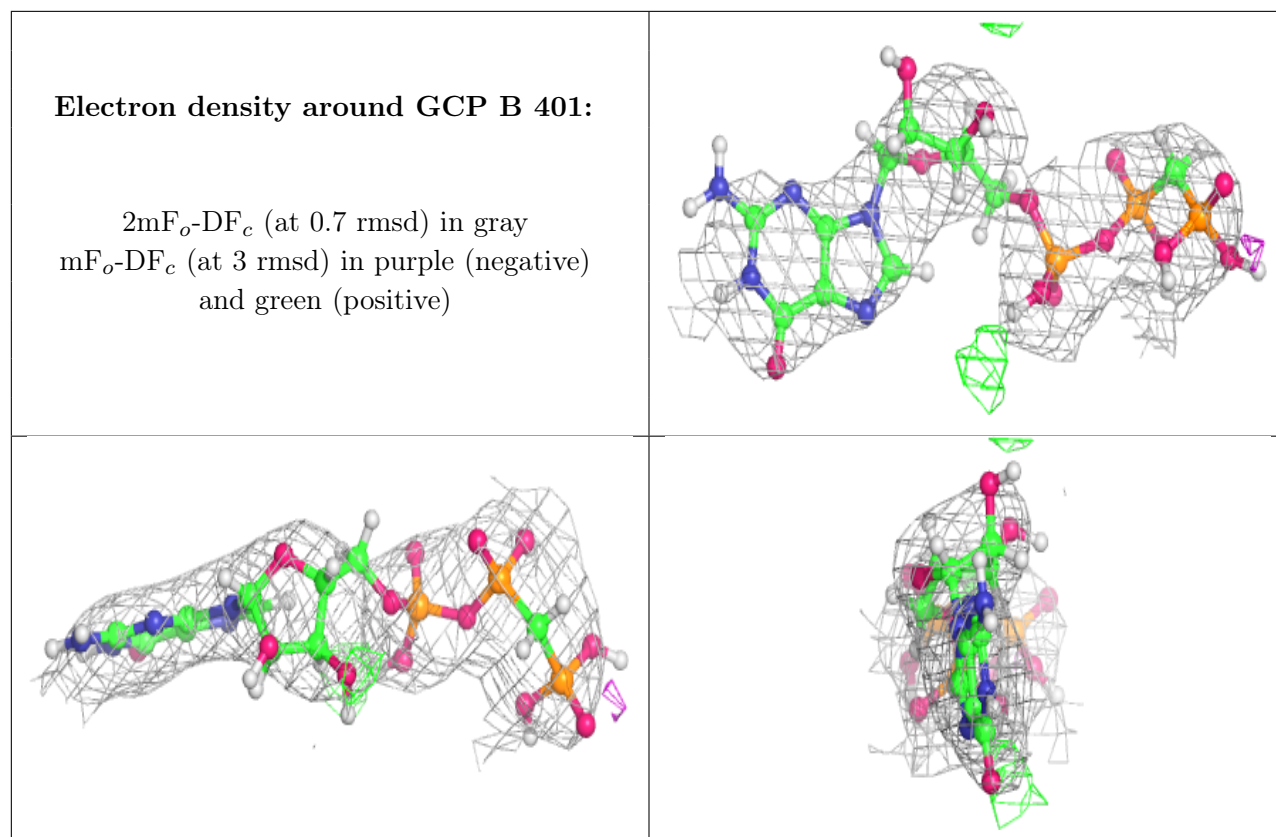
There are no monosaccharides in this entry.

## 6.4 Ligands [i](#)

In the following table, the Atoms column lists the number of modelled atoms in the group and the number defined in the chemical component dictionary. The B-factors column lists the minimum, median, 95<sup>th</sup> percentile and maximum values of B factors of atoms in the group. The column labelled 'Q < 0.9' lists the number of atoms with occupancy less than 0.9.

Mol	Type	Chain	Res	Atoms	RSCC	RSR	B-factors(Å <sup>2</sup> )	Q < 0.9
4	MG	B	402	1/1	0.81	0.15	89,89,89,89	0
3	GCP	B	401	32/32	0.92	0.17	79,108,137,146	0

The following is a graphical depiction of the model fit to experimental electron density of all instances of the Ligand of Interest. In addition, ligands with molecular weight > 250 and outliers as shown on the geometry validation Tables will also be included. Each fit is shown from different orientation to approximate a three-dimensional view.



## 6.5 Other polymers [i](#)

There are no such residues in this entry.