



## wwPDB EM Validation Summary Report ⓘ

Dec 9, 2024 – 08:18 PM JST

PDB ID : 9JJE  
EMDB ID : EMD-61524  
Title : Nematostella vectensis TRPM2 tetramer in complex with ADPRP/Ca<sup>2+</sup>  
Authors : Jiang, Y.; Zhang, Z.; Toth, B.; Szollosi, A.; Csanady, L.  
Deposited on : 2024-09-13  
Resolution : 2.52 Å (reported)

This is a wwPDB EM Validation Summary Report for a publicly released PDB entry.

We welcome your comments at [validation@mail.wwpdb.org](mailto:validation@mail.wwpdb.org)

A user guide is available at

<https://www.wwpdb.org/validation/2017/EMValidationReportHelp>

with specific help available everywhere you see the ⓘ symbol.

The types of validation reports are described at

<http://www.wwpdb.org/validation/2017/FAQs#types>.

---

The following versions of software and data (see [references ⓘ](#)) were used in the production of this report:

EMDB validation analysis : **FAILED**  
Mogul : 1.8.5 (274361), CSD as541be (2020)  
MolProbity : 4.02b-467  
buster-report : 1.1.7 (2018)  
Percentile statistics : 20231227.v01 (using entries in the PDB archive December 27th 2023)  
MapQ : **FAILED**  
Ideal geometry (proteins) : Engh & Huber (2001)  
Ideal geometry (DNA, RNA) : Parkinson et al. (1996)  
Validation Pipeline (wwPDB-VP) : 2.40

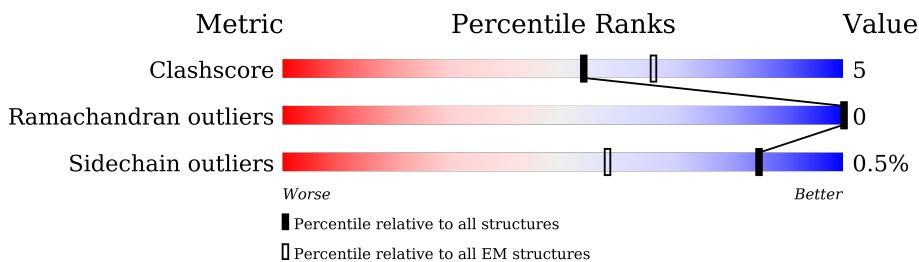
# 1 Overall quality at a glance

The following experimental techniques were used to determine the structure:

*ELECTRON MICROSCOPY*

The reported resolution of this entry is 2.52 Å.

Percentile scores (ranging between 0-100) for global validation metrics of the entry are shown in the following graphic. The table shows the number of entries on which the scores are based.



Metric	Whole archive (#Entries)	EM structures (#Entries)
Clashscore	210492	15764
Ramachandran outliers	207382	16835
Sidechain outliers	206894	16415

The table below summarises the geometric issues observed across the polymeric chains and their fit to the map. The red, orange, yellow and green segments of the bar indicate the fraction of residues that contain outliers for  $\geq 3$ , 2, 1 and 0 types of geometric quality criteria respectively. A grey segment represents the fraction of residues that are not modelled. The numeric value for each fraction is indicated below the corresponding segment, with a dot representing fractions  $\leq 5\%$

Mol	Chain	Length	Quality of chain
1	A	1560	
1	B	1560	
1	C	1560	
1	D	1560	
2	E	2	
2	F	2	
2	G	2	
2	H	2	

## 2 Entry composition i

There are 4 unique types of molecules in this entry. The entry contains 30472 atoms, of which 0 are hydrogens and 0 are deuteriums.

In the tables below, the AltConf column contains the number of residues with at least one atom in alternate conformation and the Trace column contains the number of residues modelled with at most 2 atoms.

- Molecule 1 is a protein called Transient receptor potential cation channel subfamily M member-like 2.

Mol	Chain	Residues	Atoms					AltConf	Trace
			Total	C	N	O	S		
1	A	941	7549	4906	1243	1359	41	0	0
1	B	941	7549	4906	1243	1359	41	0	0
1	C	941	7549	4906	1243	1359	41	0	0
1	D	941	7549	4906	1243	1359	41	0	0

There are 36 discrepancies between the modelled and reference sequences:

Chain	Residue	Modelled	Actual	Comment	Reference
A	1552	SER	-	expression tag	UNP A7T1N0
A	1553	ASN	-	expression tag	UNP A7T1N0
A	1554	SER	-	expression tag	UNP A7T1N0
A	1555	LEU	-	expression tag	UNP A7T1N0
A	1556	GLU	-	expression tag	UNP A7T1N0
A	1557	VAL	-	expression tag	UNP A7T1N0
A	1558	LEU	-	expression tag	UNP A7T1N0
A	1559	PHE	-	expression tag	UNP A7T1N0
A	1560	GLN	-	expression tag	UNP A7T1N0
B	1552	SER	-	expression tag	UNP A7T1N0
B	1553	ASN	-	expression tag	UNP A7T1N0
B	1554	SER	-	expression tag	UNP A7T1N0
B	1555	LEU	-	expression tag	UNP A7T1N0
B	1556	GLU	-	expression tag	UNP A7T1N0
B	1557	VAL	-	expression tag	UNP A7T1N0
B	1558	LEU	-	expression tag	UNP A7T1N0
B	1559	PHE	-	expression tag	UNP A7T1N0
B	1560	GLN	-	expression tag	UNP A7T1N0
C	1552	SER	-	expression tag	UNP A7T1N0
C	1553	ASN	-	expression tag	UNP A7T1N0
C	1554	SER	-	expression tag	UNP A7T1N0

*Continued on next page...*

Continued from previous page...

Chain	Residue	Modelled	Actual	Comment	Reference
C	1555	LEU	-	expression tag	UNP A7T1N0
C	1556	GLU	-	expression tag	UNP A7T1N0
C	1557	VAL	-	expression tag	UNP A7T1N0
C	1558	LEU	-	expression tag	UNP A7T1N0
C	1559	PHE	-	expression tag	UNP A7T1N0
C	1560	GLN	-	expression tag	UNP A7T1N0
D	1552	SER	-	expression tag	UNP A7T1N0
D	1553	ASN	-	expression tag	UNP A7T1N0
D	1554	SER	-	expression tag	UNP A7T1N0
D	1555	LEU	-	expression tag	UNP A7T1N0
D	1556	GLU	-	expression tag	UNP A7T1N0
D	1557	VAL	-	expression tag	UNP A7T1N0
D	1558	LEU	-	expression tag	UNP A7T1N0
D	1559	PHE	-	expression tag	UNP A7T1N0
D	1560	GLN	-	expression tag	UNP A7T1N0

- Molecule 2 is an oligosaccharide called 2-acetamido-2-deoxy-beta-D-glucopyranose-(1-4)-2-acetamido-2-deoxy-beta-D-glucopyranose.



Mol	Chain	Residues	Atoms				AltConf	Trace
			Total	C	N	O		
2	E	2	28	16	2	10	0	0
2	F	2	28	16	2	10	0	0
2	G	2	28	16	2	10	0	0
2	H	2	28	16	2	10	0	0

- Molecule 3 is CALCIUM ION (three-letter code: CA) (formula: Ca) (labeled as "Ligand of Interest" by depositor).

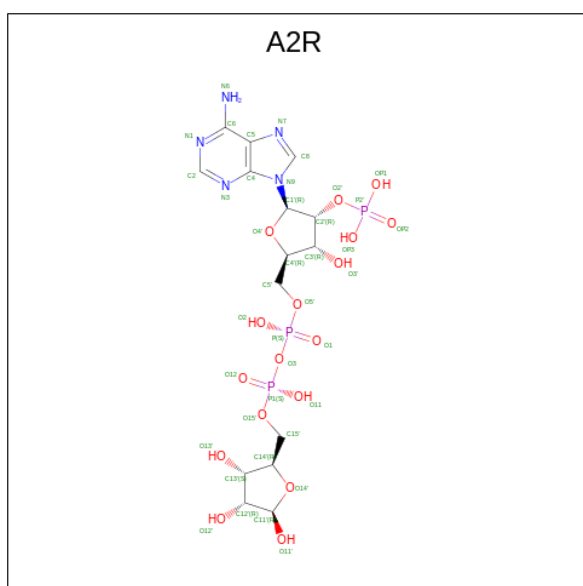
Mol	Chain	Residues	Atoms		AltConf
			Total	Ca	
3	A	1	1	1	0
3	B	1	1	1	0

Continued on next page...

Continued from previous page...

Mol	Chain	Residues	Atoms	AltConf
3	C	1	Total Ca 1 1	0
3	D	1	Total Ca 1 1	0

- Molecule 4 is [(2R,3R,4R,5R)-5-(6-AMINO-9H-PURIN-9-YL)-3-HYDROXY-4-(PHOSPHONOXY)TETRAHYDROFURAN-2-YL]METHYL [(2R,3S,4R,5R)-3,4,5-TRIHYDROXYTETRAHYDROFURAN-2-YL]METHYL DIHYDROGEN DIPHOSPHATE (three-letter code: A2R) (formula: C<sub>15</sub>H<sub>24</sub>N<sub>5</sub>O<sub>17</sub>P<sub>3</sub>) (labeled as "Ligand of Interest" by depositor).













MAG1  
MAG2

- Molecule 2: 2-acetamido-2-deoxy-beta-D-glucofuranose-(1-4)-2-acetamido-2-deoxy-beta-D-glucopyranose

Chain F:  100%MAG1  
MAG2

- Molecule 2: 2-acetamido-2-deoxy-beta-D-glucofuranose-(1-4)-2-acetamido-2-deoxy-beta-D-glucopyranose

Chain G:  100%MAG1  
MAG2

- Molecule 2: 2-acetamido-2-deoxy-beta-D-glucofuranose-(1-4)-2-acetamido-2-deoxy-beta-D-glucopyranose

Chain H:  100%MAG1  
MAG2

## 4 Experimental information

Property	Value	Source
EM reconstruction method	SINGLE PARTICLE	Depositor
Imposed symmetry	POINT, Not provided	
Number of particles used	377471	Depositor
Resolution determination method	FSC 0.143 CUT-OFF	Depositor
CTF correction method	NONE	Depositor
Microscope	FEI TITAN KRIOS	Depositor
Voltage (kV)	300	Depositor
Electron dose ( $e^-/\text{\AA}^2$ )	60	Depositor
Minimum defocus (nm)	1000	Depositor
Maximum defocus (nm)	2200	Depositor
Magnification	Not provided	
Image detector	GATAN K3 (6k x 4k)	Depositor

## 5 Model quality [i](#)

### 5.1 Standard geometry [i](#)

Bond lengths and bond angles in the following residue types are not validated in this section: NAG, CA, A2R

The Z score for a bond length (or angle) is the number of standard deviations the observed value is removed from the expected value. A bond length (or angle) with  $|Z| > 5$  is considered an outlier worth inspection. RMSZ is the root-mean-square of all Z scores of the bond lengths (or angles).

Mol	Chain	Bond lengths		Bond angles	
		RMSZ	# Z  >5	RMSZ	# Z  >5
1	A	0.30	0/7715	0.53	0/10457
1	B	0.30	0/7715	0.53	0/10457
1	C	0.30	0/7715	0.53	0/10457
1	D	0.30	0/7715	0.53	0/10457
All	All	0.30	0/30860	0.53	0/41828

There are no bond length outliers.

There are no bond angle outliers.

There are no chirality outliers.

There are no planarity outliers.

### 5.2 Too-close contacts [i](#)

In the following table, the Non-H and H(model) columns list the number of non-hydrogen atoms and hydrogen atoms in the chain respectively. The H(added) column lists the number of hydrogen atoms added and optimized by MolProbity. The Clashes column lists the number of clashes within the asymmetric unit, whereas Symm-Clashes lists symmetry-related clashes.

Mol	Chain	Non-H	H(model)	H(added)	Clashes	Symm-Clashes
1	A	7549	0	7629	80	0
1	B	7549	0	7629	82	0
1	C	7549	0	7629	80	0
1	D	7549	0	7629	80	0
2	E	28	0	25	0	0
2	F	28	0	25	0	0
2	G	28	0	25	0	0
2	H	28	0	25	0	0
3	A	1	0	0	0	0

*Continued on next page...*

Continued from previous page...

Mol	Chain	Non-H	H(model)	H(added)	Clashes	Symm-Clashes
3	B	1	0	0	0	0
3	C	1	0	0	0	0
3	D	1	0	0	0	0
4	A	40	0	20	2	0
4	B	40	0	20	2	0
4	C	40	0	20	2	0
4	D	40	0	20	3	0
All	All	30472	0	30696	304	0

The all-atom clashscore is defined as the number of clashes found per 1000 atoms (including hydrogen atoms). The all-atom clashscore for this structure is 5.

The worst 5 of 304 close contacts within the same asymmetric unit are listed below, sorted by their clash magnitude.

Atom-1	Atom-2	Interatomic distance (Å)	Clash overlap (Å)
1:D:840:LYS:HD3	1:D:1114:ARG:HB2	1.74	0.69
1:C:840:LYS:HD3	1:C:1114:ARG:HB2	1.74	0.69
1:B:840:LYS:HD3	1:B:1114:ARG:HB2	1.74	0.69
1:A:840:LYS:HD3	1:A:1114:ARG:HB2	1.74	0.68
1:C:1018:ASN:HB3	1:C:1021:VAL:HG22	1.82	0.62

There are no symmetry-related clashes.

## 5.3 Torsion angles [i](#)

### 5.3.1 Protein backbone [i](#)

In the following table, the Percentiles column shows the percent Ramachandran outliers of the chain as a percentile score with respect to all PDB entries followed by that with respect to all EM entries.

The Analysed column shows the number of residues for which the backbone conformation was analysed, and the total number of residues.

Mol	Chain	Analysed	Favoured	Allowed	Outliers	Percentiles	
1	A	929/1560 (60%)	887 (96%)	42 (4%)	0	100	100
1	B	929/1560 (60%)	887 (96%)	42 (4%)	0	100	100
1	C	929/1560 (60%)	888 (96%)	41 (4%)	0	100	100
1	D	929/1560 (60%)	887 (96%)	42 (4%)	0	100	100

Continued on next page...

*Continued from previous page...*

Mol	Chain	Analysed	Favoured	Allowed	Outliers	Percentiles	
All	All	3716/6240 (60%)	3549 (96%)	167 (4%)	0	100	100

There are no Ramachandran outliers to report.

### 5.3.2 Protein sidechains [i](#)

In the following table, the Percentiles column shows the percent sidechain outliers of the chain as a percentile score with respect to all PDB entries followed by that with respect to all EM entries.

The Analysed column shows the number of residues for which the sidechain conformation was analysed, and the total number of residues.

Mol	Chain	Analysed	Rotameric	Outliers	Percentiles	
1	A	818/1346 (61%)	814 (100%)	4 (0%)	86	94
1	B	818/1346 (61%)	814 (100%)	4 (0%)	86	94
1	C	818/1346 (61%)	814 (100%)	4 (0%)	86	94
1	D	818/1346 (61%)	814 (100%)	4 (0%)	86	94
All	All	3272/5384 (61%)	3256 (100%)	16 (0%)	85	94

5 of 16 residues with a non-rotameric sidechain are listed below:

Mol	Chain	Res	Type
1	D	1018	ASN
1	D	968	ASN
1	C	844	ASN
1	D	844	ASN
1	B	1074	ASN

Sometimes sidechains can be flipped to improve hydrogen bonding and reduce clashes. 5 of 28 such sidechains are listed below:

Mol	Chain	Res	Type
1	C	403	GLN
1	D	1160	GLN
1	C	968	ASN
1	D	968	ASN
1	C	664	GLN

### 5.3.3 RNA [i](#)

There are no RNA molecules in this entry.

### 5.4 Non-standard residues in protein, DNA, RNA chains [i](#)

There are no non-standard protein/DNA/RNA residues in this entry.

### 5.5 Carbohydrates [i](#)

8 monosaccharides are modelled in this entry.

In the following table, the Counts columns list the number of bonds (or angles) for which Mogul statistics could be retrieved, the number of bonds (or angles) that are observed in the model and the number of bonds (or angles) that are defined in the Chemical Component Dictionary. The Link column lists molecule types, if any, to which the group is linked. The Z score for a bond length (or angle) is the number of standard deviations the observed value is removed from the expected value. A bond length (or angle) with  $|Z| > 2$  is considered an outlier worth inspection. RMSZ is the root-mean-square of all Z scores of the bond lengths (or angles).

Mol	Type	Chain	Res	Link	Bond lengths			Bond angles		
					Counts	RMSZ	$\# Z  > 2$	Counts	RMSZ	$\# Z  > 2$
2	NAG	E	1	1,2	14,14,15	0.32	0	17,19,21	0.49	0
2	NAG	E	2	2	14,14,15	0.29	0	17,19,21	0.52	0
2	NAG	F	1	1,2	14,14,15	0.32	0	17,19,21	0.49	0
2	NAG	F	2	2	14,14,15	0.29	0	17,19,21	0.52	0
2	NAG	G	1	1,2	14,14,15	0.32	0	17,19,21	0.49	0
2	NAG	G	2	2	14,14,15	0.28	0	17,19,21	0.51	0
2	NAG	H	1	1,2	14,14,15	0.32	0	17,19,21	0.49	0
2	NAG	H	2	2	14,14,15	0.29	0	17,19,21	0.52	0

In the following table, the Chirals column lists the number of chiral outliers, the number of chiral centers analysed, the number of these observed in the model and the number defined in the Chemical Component Dictionary. Similar counts are reported in the Torsion and Rings columns. '–' means no outliers of that kind were identified.

Mol	Type	Chain	Res	Link	Chirals	Torsions	Rings
2	NAG	E	1	1,2	–	2/6/23/26	0/1/1/1
2	NAG	E	2	2	–	2/6/23/26	0/1/1/1
2	NAG	F	1	1,2	–	2/6/23/26	0/1/1/1
2	NAG	F	2	2	–	2/6/23/26	0/1/1/1
2	NAG	G	1	1,2	–	2/6/23/26	0/1/1/1
2	NAG	G	2	2	–	2/6/23/26	0/1/1/1

*Continued on next page...*

*Continued from previous page...*

Mol	Type	Chain	Res	Link	Chirals	Torsions	Rings
2	NAG	H	1	1,2	-	2/6/23/26	0/1/1/1
2	NAG	H	2	2	-	2/6/23/26	0/1/1/1

There are no bond length outliers.

There are no bond angle outliers.

There are no chirality outliers.

5 of 16 torsion outliers are listed below:

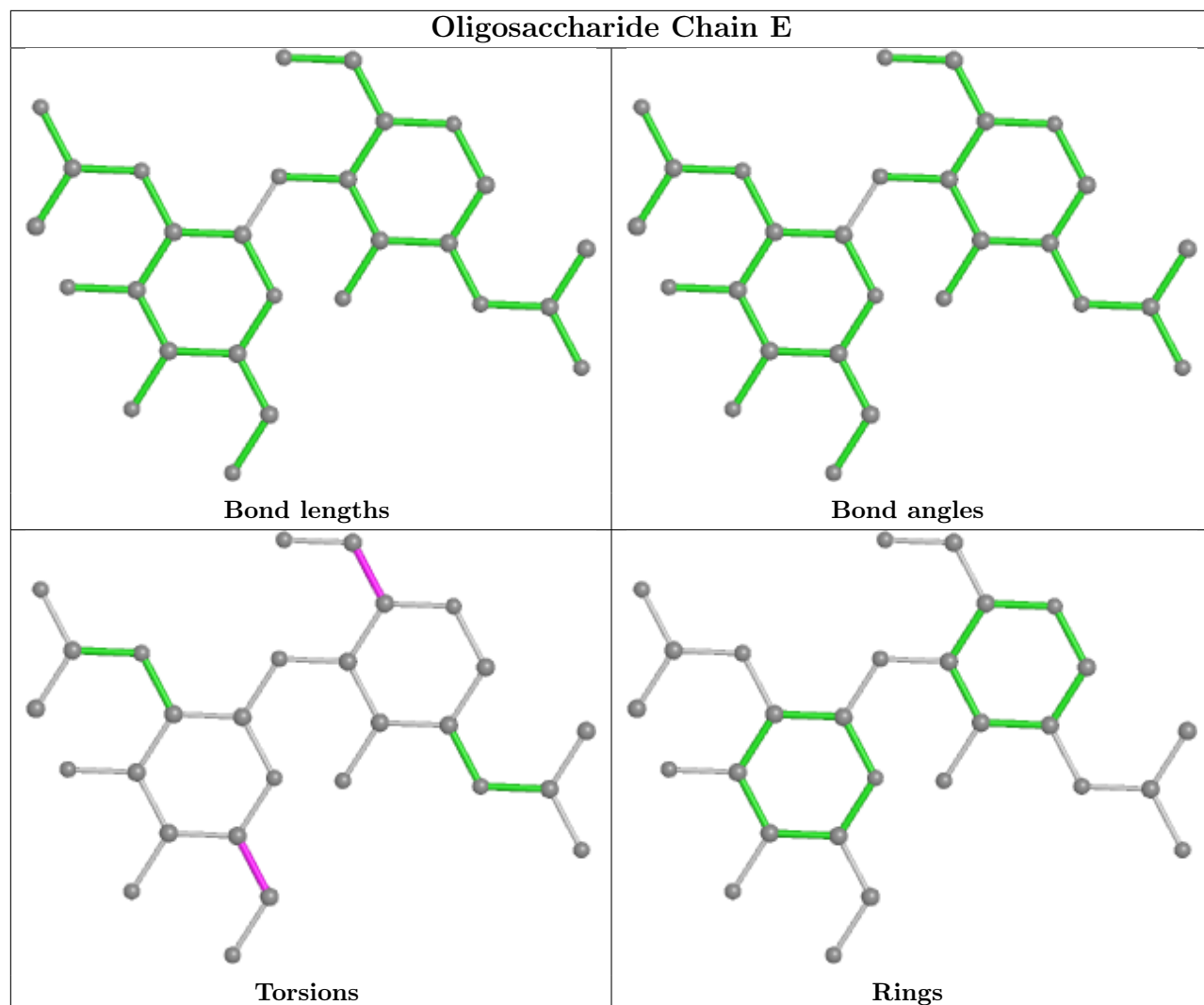
Mol	Chain	Res	Type	Atoms
2	E	2	NAG	O5-C5-C6-O6
2	F	2	NAG	O5-C5-C6-O6
2	G	2	NAG	O5-C5-C6-O6
2	H	2	NAG	O5-C5-C6-O6
2	E	2	NAG	C4-C5-C6-O6

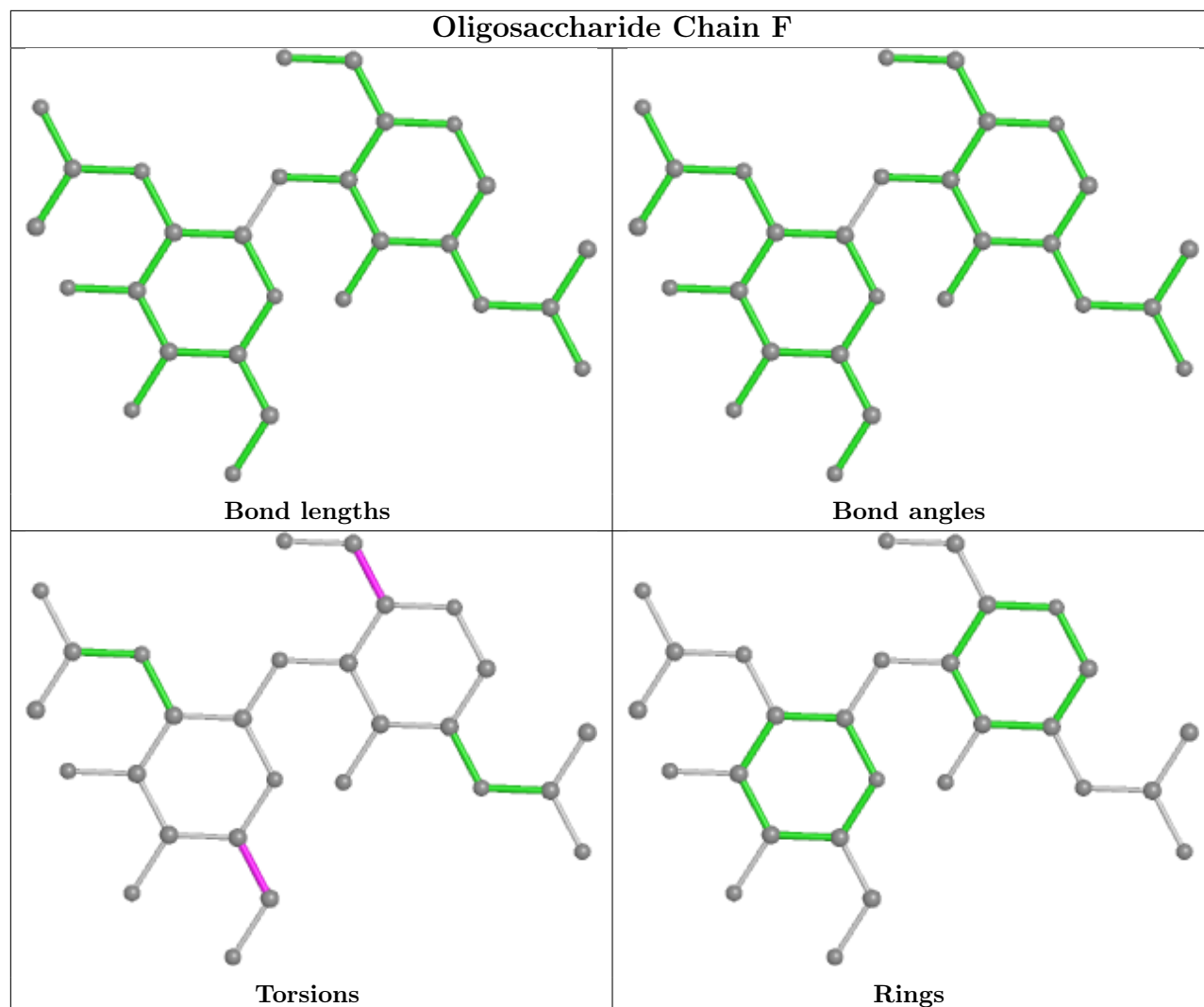
There are no ring outliers.

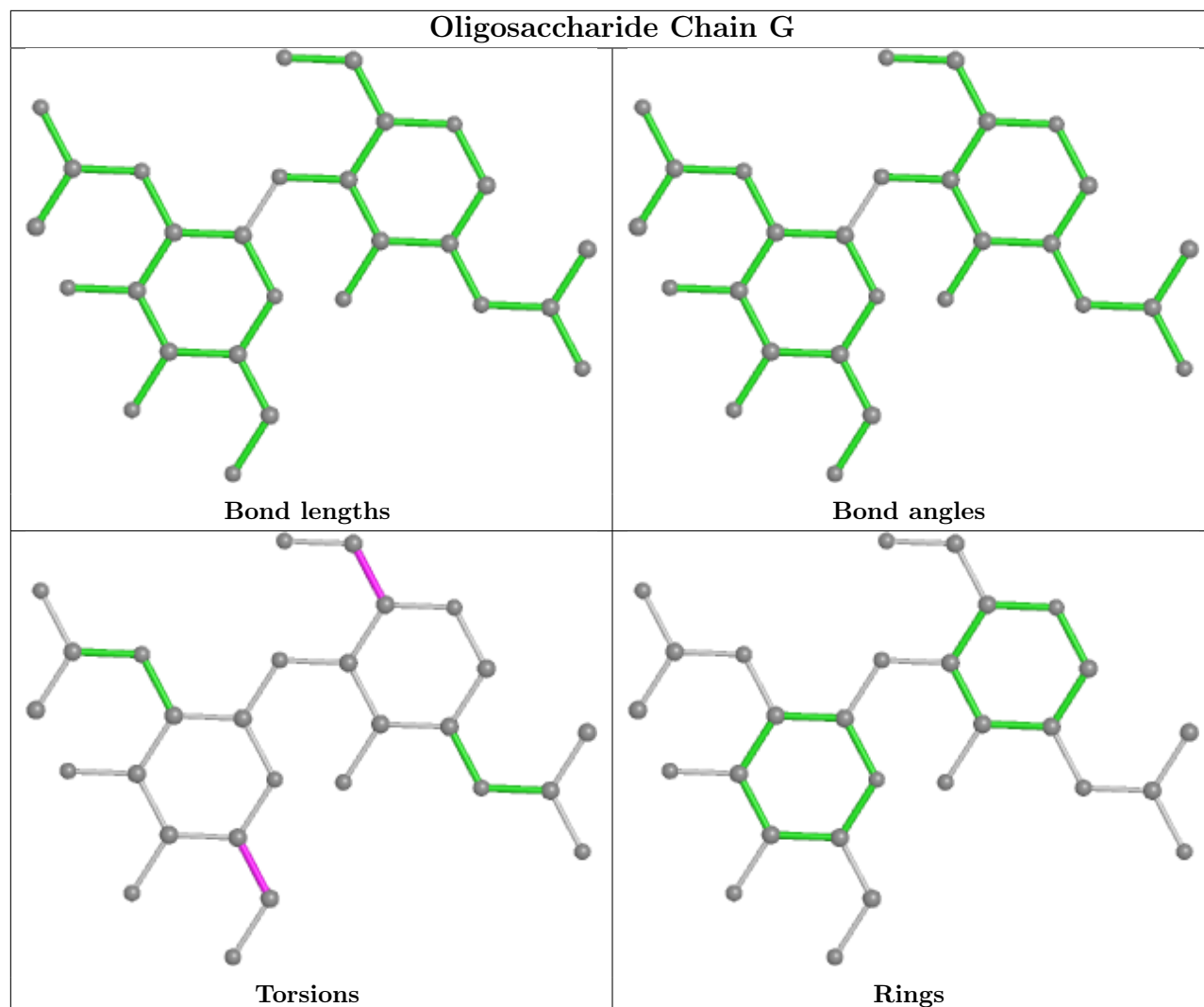
No monomer is involved in short contacts.

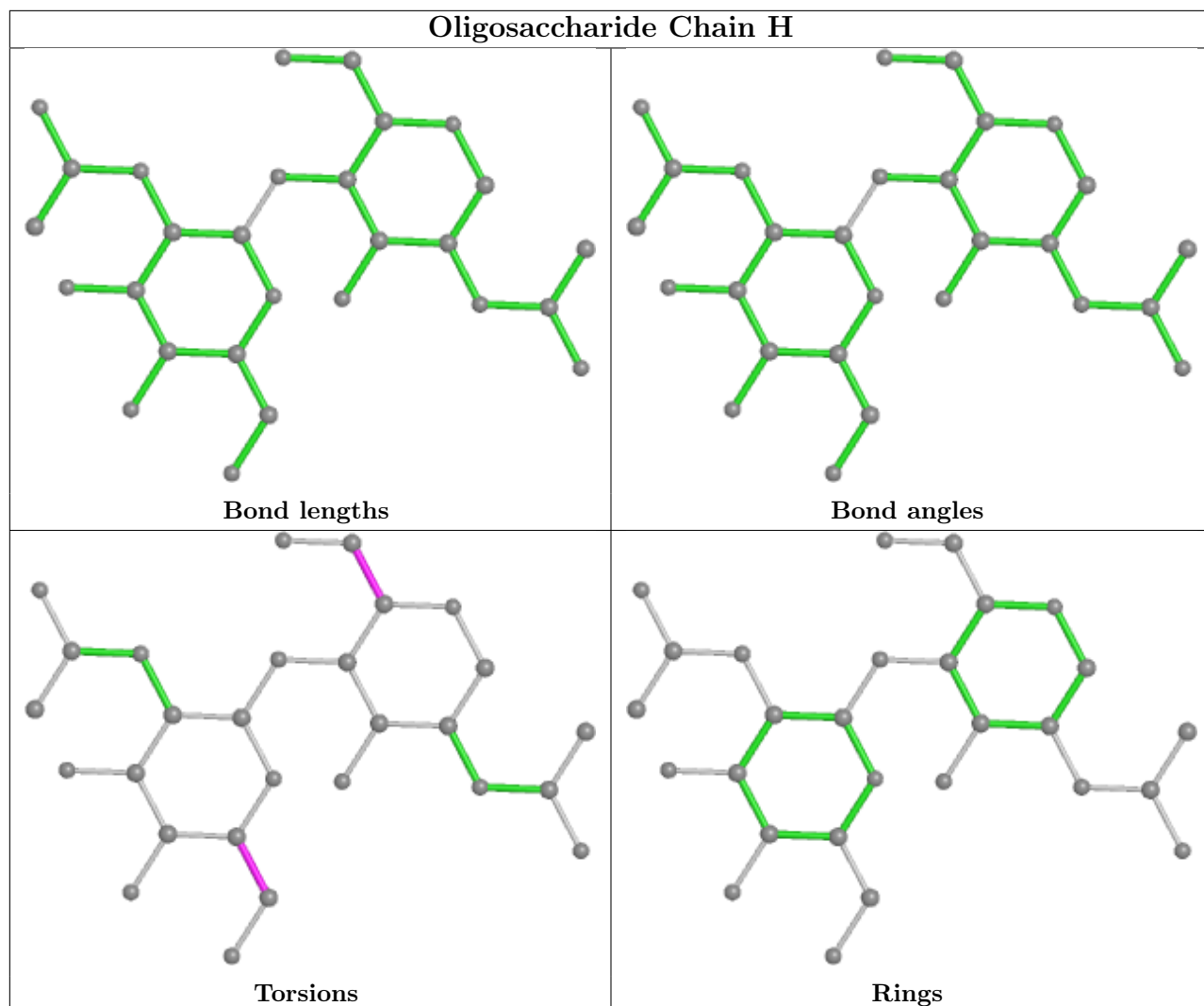
The following is a two-dimensional graphical depiction of Mogul quality analysis of bond lengths, bond angles, torsion angles, and ring geometry for oligosaccharide.











## 5.6 Ligand geometry [i](#)

Of 8 ligands modelled in this entry, 4 are monoatomic - leaving 4 for Mogul analysis.

In the following table, the Counts columns list the number of bonds (or angles) for which Mogul statistics could be retrieved, the number of bonds (or angles) that are observed in the model and the number of bonds (or angles) that are defined in the Chemical Component Dictionary. The Link column lists molecule types, if any, to which the group is linked. The Z score for a bond length (or angle) is the number of standard deviations the observed value is removed from the expected value. A bond length (or angle) with  $|Z| > 2$  is considered an outlier worth inspection. RMSZ is the root-mean-square of all Z scores of the bond lengths (or angles).

Mol	Type	Chain	Res	Link	Bond lengths			Bond angles		
					Counts	RMSZ	# $ Z  > 2$	Counts	RMSZ	# $ Z  > 2$
4	A2R	D	4001	-	37,43,43	3.72	18 (48%)	46,67,67	1.31	3 (6%)
4	A2R	A	4001	-	37,43,43	3.72	17 (45%)	46,67,67	1.31	3 (6%)
4	A2R	C	4001	-	37,43,43	3.72	17 (45%)	46,67,67	1.31	3 (6%)

Mol	Type	Chain	Res	Link	Bond lengths			Bond angles		
					Counts	RMSZ	# Z  > 2	Counts	RMSZ	# Z  > 2
4	A2R	B	4001	-	37,43,43	3.72	18 (48%)	46,67,67	1.31	3 (6%)

In the following table, the Chirals column lists the number of chiral outliers, the number of chiral centers analysed, the number of these observed in the model and the number defined in the Chemical Component Dictionary. Similar counts are reported in the Torsion and Rings columns. '-' means no outliers of that kind were identified.

Mol	Type	Chain	Res	Link	Chirals	Torsions	Rings
4	A2R	D	4001	-	-	10/23/59/59	0/4/4/4
4	A2R	A	4001	-	-	10/23/59/59	0/4/4/4
4	A2R	C	4001	-	-	10/23/59/59	0/4/4/4
4	A2R	B	4001	-	-	10/23/59/59	0/4/4/4

The worst 5 of 70 bond length outliers are listed below:

Mol	Chain	Res	Type	Atoms	Z	Observed(Å)	Ideal(Å)
4	A	4001	A2R	C2-N3	9.83	1.48	1.32
4	B	4001	A2R	C2-N3	9.83	1.48	1.32
4	D	4001	A2R	C2-N3	9.83	1.48	1.32
4	C	4001	A2R	C2-N3	9.80	1.47	1.32
4	B	4001	A2R	O14'-C11'	-9.34	1.31	1.43

The worst 5 of 12 bond angle outliers are listed below:

Mol	Chain	Res	Type	Atoms	Z	Observed(°)	Ideal(°)
4	A	4001	A2R	N3-C2-N1	-5.84	119.55	128.68
4	B	4001	A2R	N3-C2-N1	-5.84	119.55	128.68
4	D	4001	A2R	N3-C2-N1	-5.84	119.56	128.68
4	C	4001	A2R	N3-C2-N1	-5.81	119.60	128.68
4	C	4001	A2R	C11'-C12'-C13'	3.33	106.47	102.30

There are no chirality outliers.

5 of 40 torsion outliers are listed below:

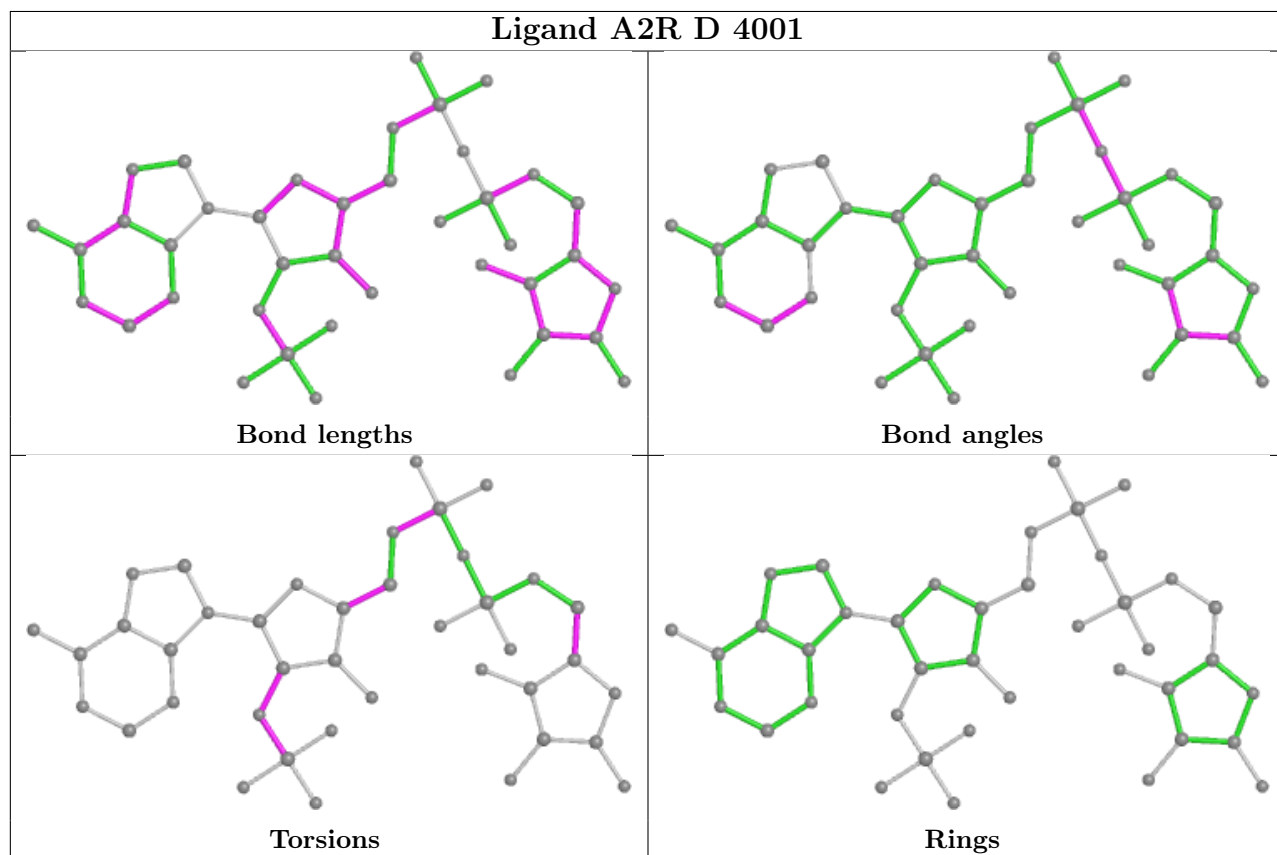
Mol	Chain	Res	Type	Atoms
4	A	4001	A2R	C2'-O2'-P2'-OP2
4	A	4001	A2R	O4'-C4'-C5'-O5'
4	A	4001	A2R	C3'-C4'-C5'-O5'
4	A	4001	A2R	C5'-O5'-P-O1
4	A	4001	A2R	O14'-C14'-C15'-O15'

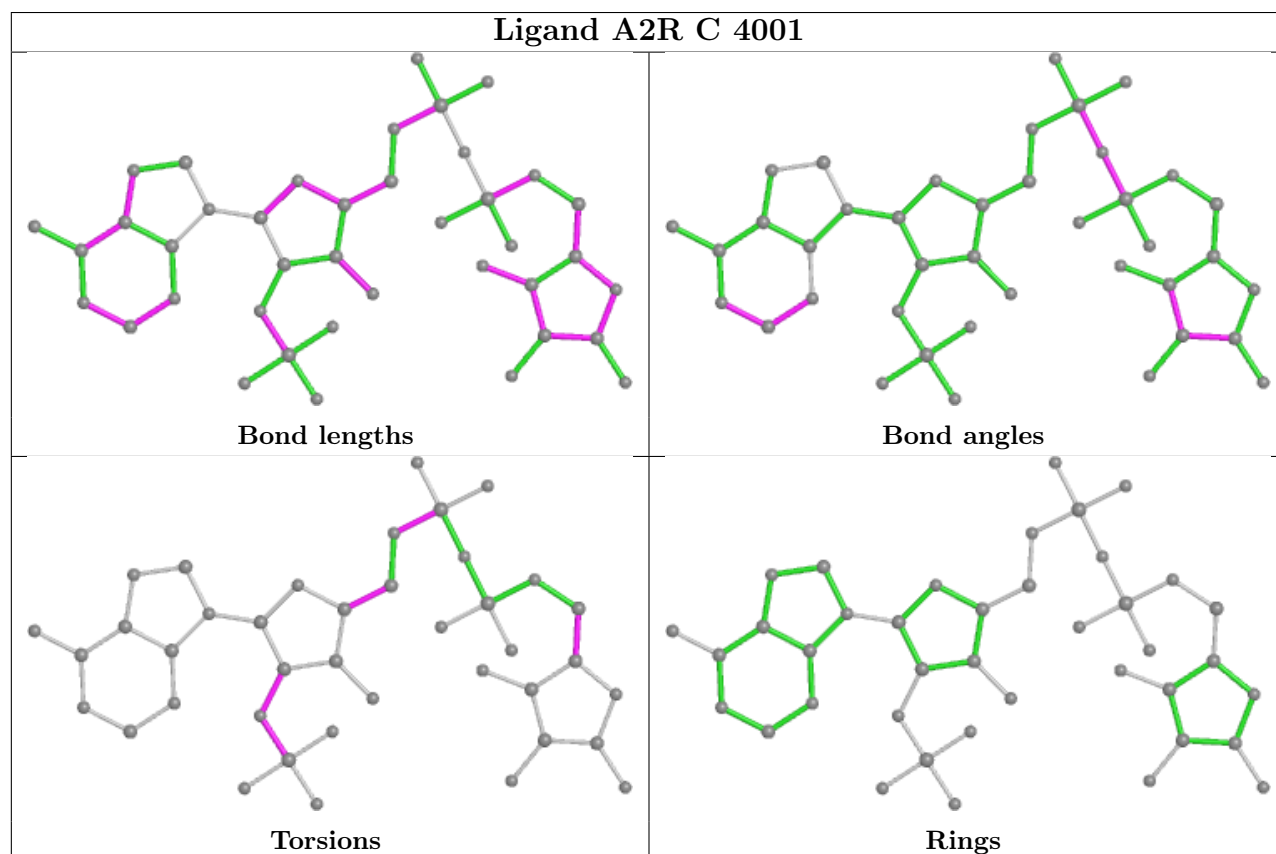
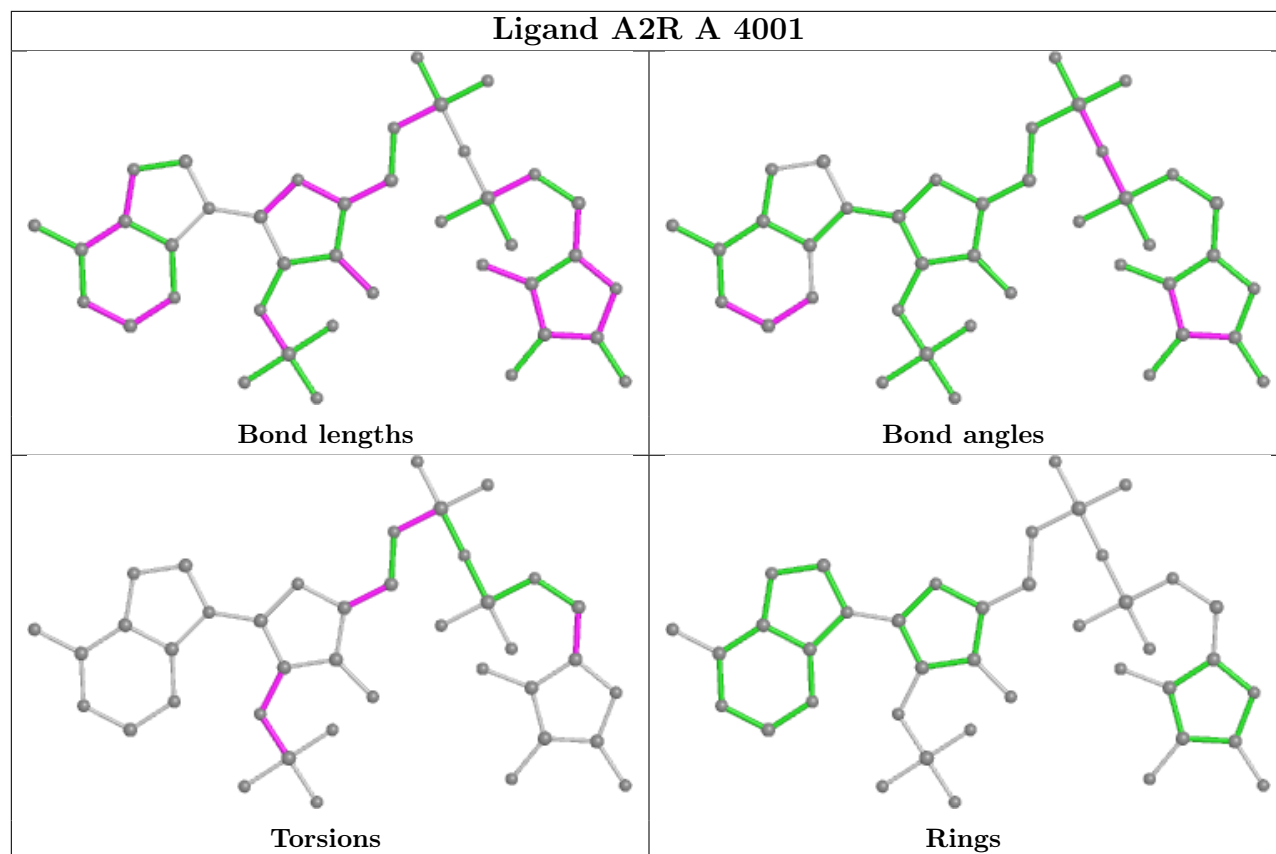
There are no ring outliers.

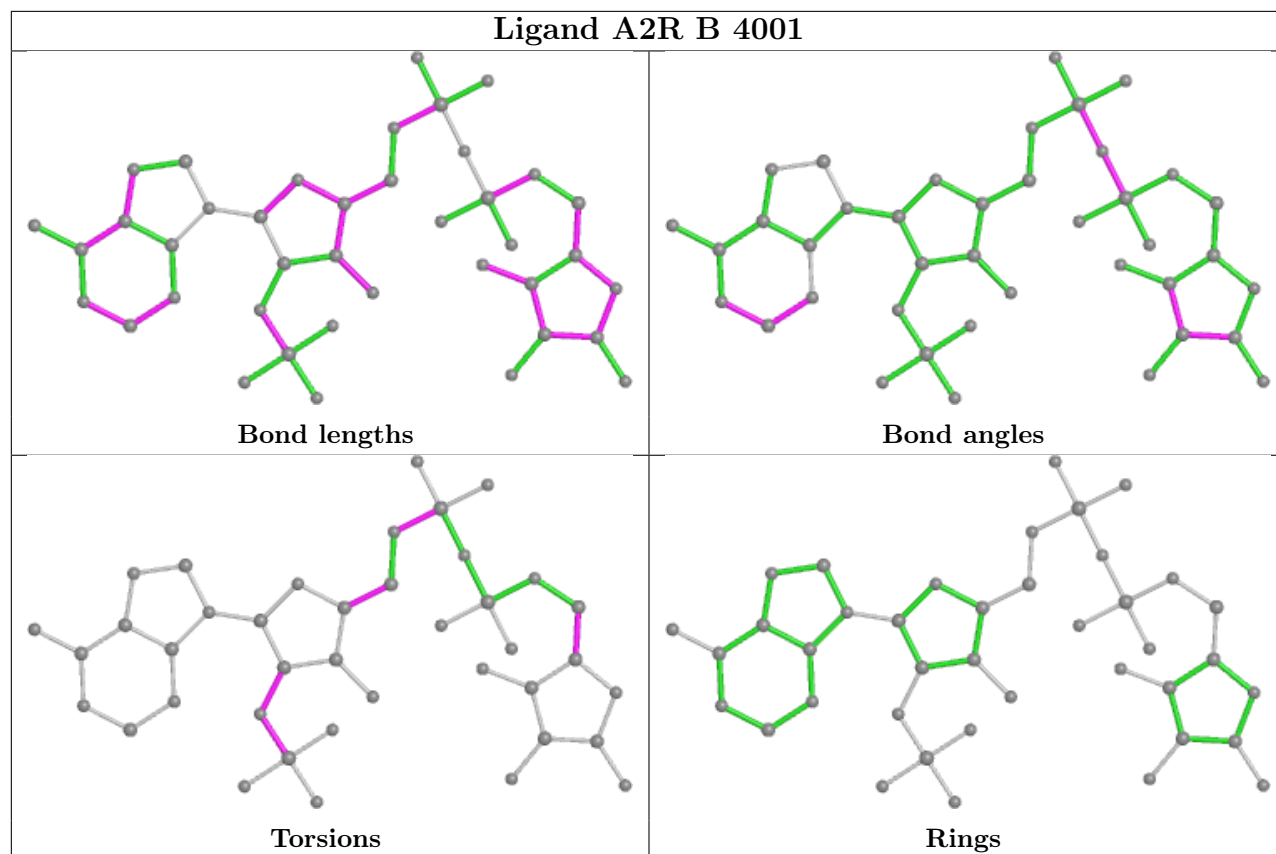
4 monomers are involved in 9 short contacts:

Mol	Chain	Res	Type	Clashes	Symm-Clashes
4	D	4001	A2R	3	0
4	A	4001	A2R	2	0
4	C	4001	A2R	2	0
4	B	4001	A2R	2	0

The following is a two-dimensional graphical depiction of Mogul quality analysis of bond lengths, bond angles, torsion angles, and ring geometry for all instances of the Ligand of Interest. In addition, ligands with molecular weight > 250 and outliers as shown on the validation Tables will also be included. For torsion angles, if less than 5% of the Mogul distribution of torsion angles is within 10 degrees of the torsion angle in question, then that torsion angle is considered an outlier. Any bond that is central to one or more torsion angles identified as an outlier by Mogul will be highlighted in the graph. For rings, the root-mean-square deviation (RMSD) between the ring in question and similar rings identified by Mogul is calculated over all ring torsion angles. If the average RMSD is greater than 60 degrees and the minimal RMSD between the ring in question and any Mogul-identified rings is also greater than 60 degrees, then that ring is considered an outlier. The outliers are highlighted in purple. The color gray indicates Mogul did not find sufficient equivalents in the CSD to analyse the geometry.







## 5.7 Other polymers [i](#)

There are no such residues in this entry.

## 5.8 Polymer linkage issues [i](#)

There are no chain breaks in this entry.