



# Full wwPDB X-ray Structure Validation Report ⓘ

Aug 6, 2020 – 04:48 PM BST

PDB ID : 2JLL  
Title : Crystal structure of NCAM2 IgIV-FN3II  
Authors : Kulahin, N.; Rasmussen, K.; Kristensen, O.; Kastrup, J.; Berezin, V.; Bock, E.; Walmod, P.; Gajhede, M.  
Deposited on : 2008-09-10  
Resolution : 2.30 Å(reported)

This is a Full wwPDB X-ray Structure Validation Report for a publicly released PDB entry.

We welcome your comments at [validation@mail.wwpdb.org](mailto:validation@mail.wwpdb.org)

A user guide is available at

<https://www.wwpdb.org/validation/2017/XrayValidationReportHelp>

with specific help available everywhere you see the ⓘ symbol.

---

The following versions of software and data (see [references ⓘ](#)) were used in the production of this report:

MolProbity : 4.02b-467  
Mogul : 1.8.5 (274361), CSD as541be (2020)  
Xtriage (Phenix) : 1.13  
EDS : 2.13.1  
Percentile statistics : 20191225.v01 (using entries in the PDB archive December 25th 2019)  
Refmac : 5.8.0158  
CCP4 : 7.0.044 (Gargrove)  
Ideal geometry (proteins) : Engh & Huber (2001)  
Ideal geometry (DNA, RNA) : Parkinson et al. (1996)  
Validation Pipeline (wwPDB-VP) : 2.13.1

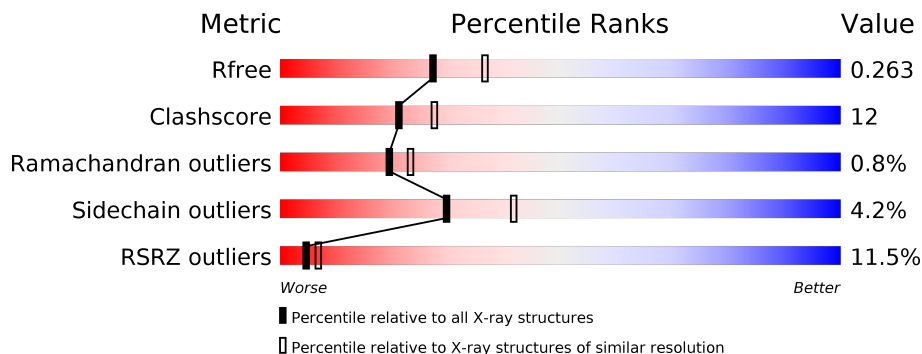
# 1 Overall quality at a glance

The following experimental techniques were used to determine the structure:

*X-RAY DIFFRACTION*

The reported resolution of this entry is 2.30 Å.

Percentile scores (ranging between 0-100) for global validation metrics of the entry are shown in the following graphic. The table shows the number of entries on which the scores are based.



Metric	Whole archive (#Entries)	Similar resolution (#Entries, resolution range(Å))
$R_{free}$	130704	5042 (2.30-2.30)
Clashscore	141614	5643 (2.30-2.30)
Ramachandran outliers	138981	5575 (2.30-2.30)
Sidechain outliers	138945	5575 (2.30-2.30)
RSRZ outliers	127900	4938 (2.30-2.30)

The table below summarises the geometric issues observed across the polymeric chains and their fit to the electron density. The red, orange, yellow and green segments on the lower bar indicate the fraction of residues that contain outliers for  $\geq 3$ , 2, 1 and 0 types of geometric quality criteria respectively. A grey segment represents the fraction of residues that are not modelled. The numeric value for each fraction is indicated below the corresponding segment, with a dot representing fractions  $\leq 5\%$ . The upper red bar (where present) indicates the fraction of residues that have poor fit to the electron density. The numeric value is given above the bar.

Mol	Chain	Length	Quality of chain
1	A	389	

The following table lists non-polymeric compounds, carbohydrate monomers and non-standard residues in protein, DNA, RNA chains that are outliers for geometric or electron-density-fit criteria:

Mol	Type	Chain	Res	Chirality	Geometry	Clashes	Electron density
2	NAG	A	1691	X	-	-	-

## 2 Entry composition [i](#)

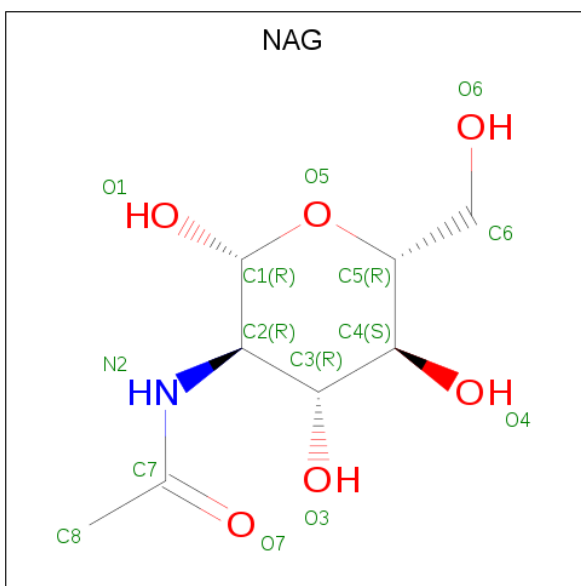
There are 5 unique types of molecules in this entry. The entry contains 3240 atoms, of which 0 are hydrogens and 0 are deuteriums.

In the tables below, the ZeroOcc column contains the number of atoms modelled with zero occupancy, the AltConf column contains the number of residues with at least one atom in alternate conformation and the Trace column contains the number of residues modelled with at most 2 atoms.

- Molecule 1 is a protein called NEURAL CELL ADHESION MOLECULE 2.

Mol	Chain	Residues	Atoms					ZeroOcc	AltConf	Trace
			Total	C	N	O	S			
1	A	382	3030	1917	524	580	9	0	1	0

- Molecule 2 is 2-acetamido-2-deoxy-beta-D-glucopyranose (three-letter code: NAG) (formula:  $C_8H_{15}NO_6$ ).



Mol	Chain	Residues	Atoms				ZeroOcc	AltConf
			Total	C	N	O		
2	A	1	14	8	1	5	0	0
2	A	1	14	8	1	5	0	0
2	A	1	14	8	1	5	0	0
2	A	1	14	8	1	5	0	0

- Molecule 3 is GLYCEROL (three-letter code: GOL) (formula:  $C_3H_8O_3$ ).



Mol	Chain	Residues	Atoms	ZeroOcc	AltConf
3	A	1	Total C O 6 3 3	0	0

- Molecule 4 is CALCIUM ION (three-letter code: CA) (formula: Ca).

Mol	Chain	Residues	Atoms	ZeroOcc	AltConf
4	A	1	Total Ca 1 1	0	0

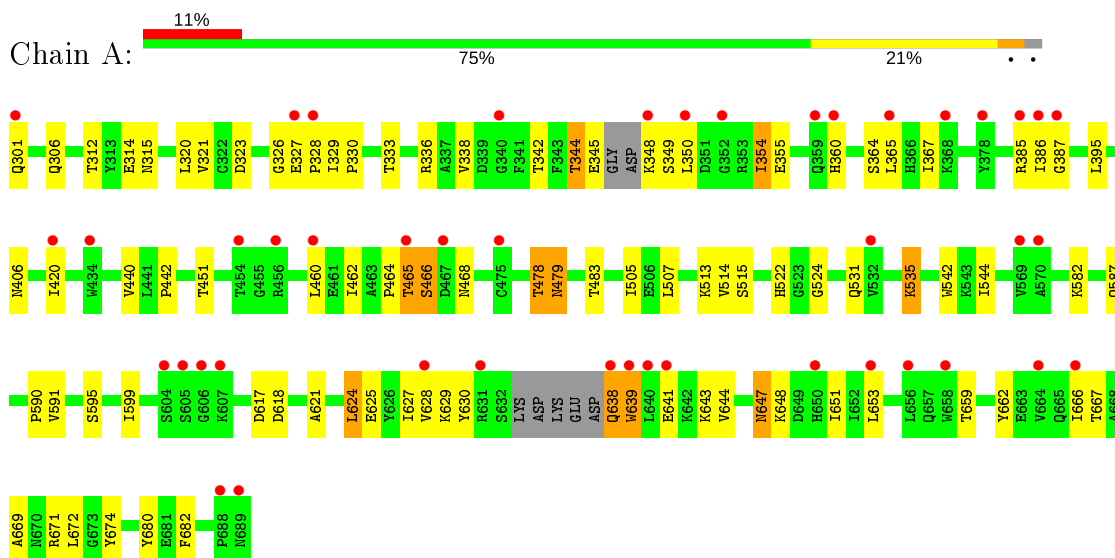
- Molecule 5 is water.

Mol	Chain	Residues	Atoms	ZeroOcc	AltConf
5	A	147	Total O 147 147	0	0

### 3 Residue-property plots [i](#)

These plots are drawn for all protein, RNA, DNA and oligosaccharide chains in the entry. The first graphic for a chain summarises the proportions of the various outlier classes displayed in the second graphic. The second graphic shows the sequence view annotated by issues in geometry and electron density. Residues are color-coded according to the number of geometric quality criteria for which they contain at least one outlier: green = 0, yellow = 1, orange = 2 and red = 3 or more. A red dot above a residue indicates a poor fit to the electron density ( $RSRZ > 2$ ). Stretches of 2 or more consecutive residues without any outlier are shown as a green connector. Residues present in the sample, but not in the model, are shown in grey.

- Molecule 1: NEURAL CELL ADHESION MOLECULE 2



## 4 Data and refinement statistics

Property	Value	Source
Space group	C 1 2 1	Depositor
Cell constants a, b, c, $\alpha$ , $\beta$ , $\gamma$	151.74Å 33.80Å 97.67Å 90.00° 98.36° 90.00°	Depositor
Resolution (Å)	19.79 – 2.30 19.79 – 2.30	Depositor EDS
% Data completeness (in resolution range)	90.4 (19.79-2.30) 96.4 (19.79-2.30)	Depositor EDS
$R_{merge}$	0.04	Depositor
$R_{sym}$	(Not available)	Depositor
$\langle I/\sigma(I) \rangle$ <sup>1</sup>	2.88 (at 2.30Å)	Xtrriage
Refinement program	PHENIX (PHENIX.REFINE)	Depositor
R, $R_{free}$	0.216 , 0.269 0.212 , 0.263	Depositor DCC
$R_{free}$ test set	1111 reflections (5.15%)	wwPDB-VP
Wilson B-factor (Å <sup>2</sup> )	44.4	Xtrriage
Anisotropy	0.023	Xtrriage
Bulk solvent $k_{sol}$ (e/Å <sup>3</sup> ), $B_{sol}$ (Å <sup>2</sup> )	0.35 , 55.3	EDS
L-test for twinning <sup>2</sup>	$\langle  L  \rangle = 0.46$ , $\langle L^2 \rangle = 0.30$	Xtrriage
Estimated twinning fraction	No twinning to report.	Xtrriage
$F_o, F_c$ correlation	0.94	EDS
Total number of atoms	3240	wwPDB-VP
Average B, all atoms (Å <sup>2</sup> )	51.0	wwPDB-VP

Xtrriage's analysis on translational NCS is as follows: *The largest off-origin peak in the Patterson function is 7.87% of the height of the origin peak. No significant pseudotranslation is detected.*

<sup>1</sup>Intensities estimated from amplitudes.

<sup>2</sup>Theoretical values of  $\langle |L| \rangle$ ,  $\langle L^2 \rangle$  for acentric reflections are 0.5, 0.333 respectively for untwinned datasets, and 0.375, 0.2 for perfectly twinned datasets.

## 5 Model quality [i](#)

### 5.1 Standard geometry [i](#)

Bond lengths and bond angles in the following residue types are not validated in this section: GOL, CA, NAG

The Z score for a bond length (or angle) is the number of standard deviations the observed value is removed from the expected value. A bond length (or angle) with  $|Z| > 5$  is considered an outlier worth inspection. RMSZ is the root-mean-square of all Z scores of the bond lengths (or angles).

Mol	Chain	Bond lengths		Bond angles	
		RMSZ	# Z  >5	RMSZ	# Z  >5
1	A	0.29	0/3088	0.48	0/4189

There are no bond length outliers.

There are no bond angle outliers.

There are no chirality outliers.

There are no planarity outliers.

### 5.2 Too-close contacts [i](#)

In the following table, the Non-H and H(model) columns list the number of non-hydrogen atoms and hydrogen atoms in the chain respectively. The H(added) column lists the number of hydrogen atoms added and optimized by MolProbity. The Clashes column lists the number of clashes within the asymmetric unit, whereas Symm-Clashes lists symmetry related clashes.

Mol	Chain	Non-H	H(model)	H(added)	Clashes	Symm-Clashes
1	A	3030	0	2980	74	0
2	A	56	0	52	0	0
3	A	6	0	6	0	0
4	A	1	0	0	0	0
5	A	147	0	0	5	0
All	All	3240	0	3038	74	0

The all-atom clashscore is defined as the number of clashes found per 1000 atoms (including hydrogen atoms). The all-atom clashscore for this structure is 12.

All (74) close contacts within the same asymmetric unit are listed below, sorted by their clash magnitude.

Atom-1	Atom-2	Interatomic distance (Å)	Clash overlap (Å)
1:A:348:LYS:HB3	1:A:349:SER:HA	1.12	1.06
1:A:348:LYS:CB	1:A:349:SER:HA	1.87	1.02
1:A:348:LYS:HB3	1:A:349:SER:CA	1.97	0.94
1:A:522:HIS:HD2	1:A:524:GLY:H	1.19	0.90
1:A:522:HIS:CD2	1:A:524:GLY:H	2.07	0.72
1:A:599:ILE:HD13	1:A:666:ILE:HG13	1.76	0.68
1:A:644:VAL:HG22	1:A:648:LYS:HG3	1.75	0.67
1:A:629:LYS:HG2	1:A:641:GLU:HG2	1.78	0.65
1:A:628:VAL:HG22	1:A:666:ILE:HD12	1.78	0.64
1:A:478:THR:HB	1:A:483:THR:OG1	2.00	0.62
1:A:333:THR:HG23	1:A:344:THR:HG23	1.82	0.62
1:A:669:ALA:HB2	1:A:674:TYR:CD1	2.36	0.61
1:A:354:ILE:HD12	1:A:355:GLU:N	2.16	0.61
1:A:442:PRO:HD3	1:A:451:THR:HG23	1.83	0.60
1:A:440:VAL:HG12	5:A:2055:HOH:O	2.00	0.59
1:A:321:VAL:HG23	5:A:2011:HOH:O	2.02	0.58
1:A:479:ASN:C	1:A:479:ASN:HD22	2.05	0.58
1:A:354:ILE:HD11	1:A:365:LEU:HG	1.83	0.58
1:A:301:GLN:N	1:A:386:ILE:HD11	2.19	0.57
1:A:647:ASN:HD22	1:A:647:ASN:N	2.03	0.57
1:A:336:ARG:HG2	1:A:338:VAL:HG12	1.86	0.57
1:A:314:GLU:O	1:A:315:ASN:HB2	2.06	0.56
1:A:618:ASP:HB2	5:A:2133:HOH:O	2.04	0.56
1:A:478:THR:HG22	5:A:2070:HOH:O	2.06	0.56
1:A:662:TYR:HB2	1:A:682:PHE:CE2	2.41	0.56
1:A:638:GLN:HG2	1:A:639:TRP:N	2.22	0.55
1:A:595:SER:OG	1:A:617:ASP:HB3	2.07	0.54
1:A:535:LYS:HB2	1:A:542:TRP:CE3	2.43	0.53
1:A:420:ILE:HG12	1:A:460:LEU:HB3	1.90	0.52
1:A:301:GLN:HE22	1:A:387:GLY:HA3	1.74	0.51
1:A:505:ILE:HD11	1:A:513:LYS:HG2	1.91	0.51
1:A:628:VAL:HG21	1:A:651:ILE:HD13	1.92	0.50
1:A:465:THR:O	1:A:466:SER:HB2	2.13	0.49
1:A:320:LEU:O	1:A:364:SER:HA	2.13	0.48
1:A:625:GLU:OE2	1:A:643:LYS:HD2	2.14	0.48
1:A:591:VAL:HG12	1:A:672:LEU:CD1	2.43	0.48
1:A:667:THR:HG21	1:A:674:TYR:HB3	1.96	0.47
1:A:629:LYS:CG	1:A:641:GLU:HG2	2.44	0.47
1:A:630:TYR:CE2	1:A:653:LEU:HD22	2.50	0.47
1:A:628:VAL:CG2	1:A:651:ILE:HD13	2.44	0.47
1:A:624:LEU:H	1:A:624:LEU:HD22	1.80	0.46
1:A:465:THR:O	1:A:466:SER:CB	2.63	0.46

*Continued on next page...*



Continued from previous page...

Atom-1	Atom-2	Interatomic distance (Å)	Clash overlap (Å)
1:A:505:ILE:HG12	1:A:515:SER:HB2	1.97	0.46
1:A:466:SER:C	1:A:468:ASN:H	2.19	0.46
1:A:621:ALA:HB1	1:A:671[C]:ARG:HG2	1.97	0.46
1:A:522:HIS:HD2	1:A:524:GLY:N	2.00	0.45
1:A:326:GLY:O	1:A:330:PRO:HD3	2.16	0.45
1:A:479:ASN:C	1:A:479:ASN:ND2	2.71	0.44
1:A:629:LYS:HG2	1:A:641:GLU:HA	1.99	0.44
1:A:329:ILE:HA	1:A:330:PRO:HD3	1.84	0.44
1:A:531:GLN:NE2	1:A:544:ILE:HD12	2.33	0.43
1:A:591:VAL:HG12	1:A:672:LEU:HD12	1.99	0.43
1:A:629:LYS:CD	1:A:641:GLU:HG2	2.48	0.43
1:A:301:GLN:NE2	1:A:387:GLY:HA3	2.34	0.43
1:A:535:LYS:HB3	1:A:535:LYS:HE3	1.70	0.42
1:A:328:PRO:HG2	1:A:385:ARG:HD3	2.01	0.42
1:A:365:LEU:CD2	1:A:367:ILE:HD11	2.50	0.42
1:A:312:THR:HG22	1:A:395:LEU:HD11	2.01	0.42
1:A:590:PRO:HD2	5:A:2123:HOH:O	2.20	0.42
1:A:385:ARG:HG3	1:A:386:ILE:HG23	2.01	0.42
1:A:659:THR:HG22	1:A:659:THR:O	2.20	0.42
1:A:420:ILE:HD11	1:A:460:LEU:HD23	2.02	0.41
1:A:306:GLN:HB3	1:A:323:ASP:HB2	2.02	0.41
1:A:327:GLU:HA	1:A:328:PRO:C	2.40	0.41
1:A:462:ILE:O	1:A:464:PRO:HD3	2.21	0.41
1:A:507:LEU:HD21	1:A:587:GLN:O	2.21	0.41
1:A:599:ILE:HD11	1:A:680:TYR:HB3	2.03	0.41
1:A:333:THR:HG22	1:A:342:THR:HG23	2.02	0.41
1:A:301:GLN:HA	1:A:301:GLN:HE21	1.85	0.41
1:A:628:VAL:HG22	1:A:666:ILE:CD1	2.49	0.41
1:A:320:LEU:HD12	1:A:365:LEU:HD22	2.02	0.41
1:A:669:ALA:HB2	1:A:674:TYR:CE1	2.55	0.41
1:A:630:TYR:C	1:A:639:TRP:CD1	2.95	0.40
1:A:627:ILE:HD11	1:A:674:TYR:CE1	2.56	0.40

There are no symmetry-related clashes.

## 5.3 Torsion angles [i](#)

### 5.3.1 Protein backbone [i](#)

In the following table, the Percentiles column shows the percent Ramachandran outliers of the chain as a percentile score with respect to all X-ray entries followed by that with respect to entries

of similar resolution.

The Analysed column shows the number of residues for which the backbone conformation was analysed, and the total number of residues.

Mol	Chain	Analysed	Favoured	Allowed	Outliers	Percentiles
1	A	377/389 (97%)	354 (94%)	20 (5%)	3 (1%)	19 23

All (3) Ramachandran outliers are listed below:

Mol	Chain	Res	Type
1	A	466	SER
1	A	350	LEU
1	A	360	HIS

### 5.3.2 Protein sidechains [i](#)

In the following table, the Percentiles column shows the percent sidechain outliers of the chain as a percentile score with respect to all X-ray entries followed by that with respect to entries of similar resolution.

The Analysed column shows the number of residues for which the sidechain conformation was analysed, and the total number of residues.

Mol	Chain	Analysed	Rotameric	Outliers	Percentiles
1	A	336/343 (98%)	322 (96%)	14 (4%)	30 42

All (14) residues with a non-rotameric sidechain are listed below:

Mol	Chain	Res	Type
1	A	344	THR
1	A	345	GLU
1	A	354	ILE
1	A	406	ASN
1	A	465	THR
1	A	478	THR
1	A	479	ASN
1	A	514	VAL
1	A	535	LYS
1	A	582	LYS
1	A	624	LEU
1	A	638	GLN
1	A	639	TRP
1	A	647	ASN

Some sidechains can be flipped to improve hydrogen bonding and reduce clashes. All (9) such sidechains are listed below:

Mol	Chain	Res	Type
1	A	301	GLN
1	A	406	ASN
1	A	479	ASN
1	A	480	HIS
1	A	509	GLN
1	A	522	HIS
1	A	531	GLN
1	A	647	ASN
1	A	689	ASN

### 5.3.3 RNA [i](#)

There are no RNA molecules in this entry.

## 5.4 Non-standard residues in protein, DNA, RNA chains [i](#)

There are no non-standard protein/DNA/RNA residues in this entry.

## 5.5 Carbohydrates [i](#)

There are no monosaccharides in this entry.

## 5.6 Ligand geometry [i](#)

Of 6 ligands modelled in this entry, 1 is monoatomic - leaving 5 for Mogul analysis.

In the following table, the Counts columns list the number of bonds (or angles) for which Mogul statistics could be retrieved, the number of bonds (or angles) that are observed in the model and the number of bonds (or angles) that are defined in the Chemical Component Dictionary. The Link column lists molecule types, if any, to which the group is linked. The Z score for a bond length (or angle) is the number of standard deviations the observed value is removed from the expected value. A bond length (or angle) with  $|Z| > 2$  is considered an outlier worth inspection. RMSZ is the root-mean-square of all Z scores of the bond lengths (or angles).

Mol	Type	Chain	Res	Link	Bond lengths			Bond angles		
					Counts	RMSZ	$\# Z  > 2$	Counts	RMSZ	$\# Z  > 2$
2	NAG	A	1691	1	14,14,15	0.54	0	17,19,21	0.98	1 (5%)
2	NAG	A	1692	1	14,14,15	0.61	0	17,19,21	1.02	1 (5%)
3	GOL	A	1694	4	5,5,5	0.37	0	5,5,5	0.28	0

Mol	Type	Chain	Res	Link	Bond lengths			Bond angles		
					Counts	RMSZ	# Z  > 2	Counts	RMSZ	# Z  > 2
2	NAG	A	1690	1	14,14,15	0.54	0	17,19,21	1.02	1 (5%)
2	NAG	A	1693	1	14,14,15	0.47	0	17,19,21	1.00	2 (11%)

In the following table, the Chirals column lists the number of chiral outliers, the number of chiral centers analysed, the number of these observed in the model and the number defined in the Chemical Component Dictionary. Similar counts are reported in the Torsion and Rings columns. '-' means no outliers of that kind were identified.

Mol	Type	Chain	Res	Link	Chirals	Torsions	Rings
2	NAG	A	1691	1	1/1/5/7	4/6/23/26	0/1/1/1
2	NAG	A	1692	1	-	0/6/23/26	0/1/1/1
3	GOL	A	1694	4	-	2/4/4/4	-
2	NAG	A	1690	1	-	0/6/23/26	0/1/1/1
2	NAG	A	1693	1	-	1/6/23/26	0/1/1/1

There are no bond length outliers.

All (5) bond angle outliers are listed below:

Mol	Chain	Res	Type	Atoms	Z	Observed(°)	Ideal(°)
2	A	1690	NAG	C1-O5-C5	2.55	115.64	112.19
2	A	1693	NAG	C2-N2-C7	-2.33	119.59	122.90
2	A	1691	NAG	O5-C5-C6	2.30	110.82	107.20
2	A	1692	NAG	C2-N2-C7	-2.29	119.65	122.90
2	A	1693	NAG	O5-C5-C6	2.26	110.75	107.20

All (1) chirality outliers are listed below:

Mol	Chain	Res	Type	Atom
2	A	1691	NAG	C1

All (7) torsion outliers are listed below:

Mol	Chain	Res	Type	Atoms
2	A	1691	NAG	C8-C7-N2-C2
2	A	1691	NAG	O7-C7-N2-C2
3	A	1694	GOL	C1-C2-C3-O3
2	A	1691	NAG	C4-C5-C6-O6
2	A	1691	NAG	O5-C5-C6-O6
3	A	1694	GOL	O2-C2-C3-O3
2	A	1693	NAG	C4-C5-C6-O6

There are no ring outliers.

No monomer is involved in short contacts.

## 5.7 Other polymers

There are no such residues in this entry.

## 5.8 Polymer linkage issues

There are no chain breaks in this entry.

## 6 Fit of model and data

### 6.1 Protein, DNA and RNA chains

In the following table, the column labelled ‘#RSRZ> 2’ contains the number (and percentage) of RSRZ outliers, followed by percent RSRZ outliers for the chain as percentile scores relative to all X-ray entries and entries of similar resolution. The OWAB column contains the minimum, median, 95<sup>th</sup> percentile and maximum values of the occupancy-weighted average B-factor per residue. The column labelled ‘Q< 0.9’ lists the number of (and percentage) of residues with an average occupancy less than 0.9.

Mol	Chain	Analysed	<RSRZ>	#RSRZ>2	OWAB(Å <sup>2</sup> )	Q<0.9
1	A	382/389 (98%)	0.65	44 (11%) <b>4</b> <b>7</b>	26, 48, 83, 104	0

All (44) RSRZ outliers are listed below:

Mol	Chain	Res	Type	RSRZ
1	A	639	TRP	5.7
1	A	360	HIS	4.6
1	A	604	SER	4.5
1	A	359	GLN	4.3
1	A	456	ARG	4.3
1	A	350	LEU	4.0
1	A	532	VAL	3.8
1	A	348	LYS	3.7
1	A	606	GLY	3.6
1	A	327	GLU	3.5
1	A	460	LEU	3.4
1	A	434	TRP	3.4
1	A	640	LEU	3.3
1	A	638	GLN	3.2
1	A	650	HIS	3.2
1	A	641	GLU	3.2
1	A	666	ILE	2.8
1	A	352	GLY	2.8
1	A	420	ILE	2.8
1	A	387	GLY	2.7
1	A	570	ALA	2.7
1	A	628	VAL	2.7
1	A	664	VAL	2.6
1	A	301	GLN	2.6
1	A	328	PRO	2.5
1	A	631	ARG	2.5
1	A	385	ARG	2.5

*Continued on next page...*

*Continued from previous page...*

Mol	Chain	Res	Type	RSRZ
1	A	658	TRP	2.5
1	A	688	PRO	2.4
1	A	465	THR	2.3
1	A	386	ILE	2.3
1	A	368	LYS	2.3
1	A	656	LEU	2.2
1	A	454	THR	2.2
1	A	569	VAL	2.2
1	A	365	LEU	2.2
1	A	607	LYS	2.2
1	A	605	SER	2.1
1	A	689	ASN	2.1
1	A	475	CYS	2.1
1	A	378	TYR	2.1
1	A	653	LEU	2.0
1	A	340	GLY	2.0
1	A	467	ASP	2.0

## 6.2 Non-standard residues in protein, DNA, RNA chains [i](#)

There are no non-standard protein/DNA/RNA residues in this entry.

## 6.3 Carbohydrates [i](#)

There are no monosaccharides in this entry.

## 6.4 Ligands [i](#)

In the following table, the Atoms column lists the number of modelled atoms in the group and the number defined in the chemical component dictionary. The B-factors column lists the minimum, median, 95<sup>th</sup> percentile and maximum values of B factors of atoms in the group. The column labelled 'Q< 0.9' lists the number of atoms with occupancy less than 0.9.

Mol	Type	Chain	Res	Atoms	RSCC	RSR	B-factors( $\text{\AA}^2$ )	Q<0.9
2	NAG	A	1691	14/15	0.83	0.29	63,75,97,98	0
2	NAG	A	1693	14/15	0.84	0.27	57,69,80,86	0
3	GOL	A	1694	6/6	0.91	0.30	51,57,62,62	0
2	NAG	A	1692	14/15	0.93	0.13	37,41,46,46	0
4	CA	A	1695	1/1	0.96	0.04	45,45,45,45	0
2	NAG	A	1690	14/15	0.96	0.10	28,33,34,37	0

## 6.5 Other polymers

There are no such residues in this entry.