



Full wwPDB X-ray Structure Validation Report ⓘ

Dec 3, 2023 – 11:10 pm GMT

PDB ID : 2JLZ
Title : Dengue virus 4 NS3 helicase in complex with ssRNA and ADP
Authors : Luo, D.H.; Xu, T.; Watson, R.P.; Becker, D.S.; Sampath, A.; Jahnke, W.;
Yeong, S.S.; Wang, C.H.; Lim, S.P.; Vasudevan, S.G.; Lescar, J.
Deposited on : 2008-09-15
Resolution : 2.20 Å(reported)

This is a Full wwPDB X-ray Structure Validation Report for a publicly released PDB entry.

We welcome your comments at validation@mail.wwpdb.org

A user guide is available at

<https://www.wwpdb.org/validation/2017/XrayValidationReportHelp>

with specific help available everywhere you see the ⓘ symbol.

The types of validation reports are described at

<http://www.wwpdb.org/validation/2017/FAQs#types>.

The following versions of software and data (see [references ⓘ](#)) were used in the production of this report:

MolProbity : 4.02b-467
Mogul : 1.8.4, CSD as541be (2020)
Xtriage (Phenix) : 1.13
EDS : 2.36
buster-report : 1.1.7 (2018)
Percentile statistics : 20191225.v01 (using entries in the PDB archive December 25th 2019)
Refmac : 5.8.0158
CCP4 : 7.0.044 (Gargrove)
Ideal geometry (proteins) : Engh & Huber (2001)
Ideal geometry (DNA, RNA) : Parkinson et al. (1996)
Validation Pipeline (wwPDB-VP) : 2.36

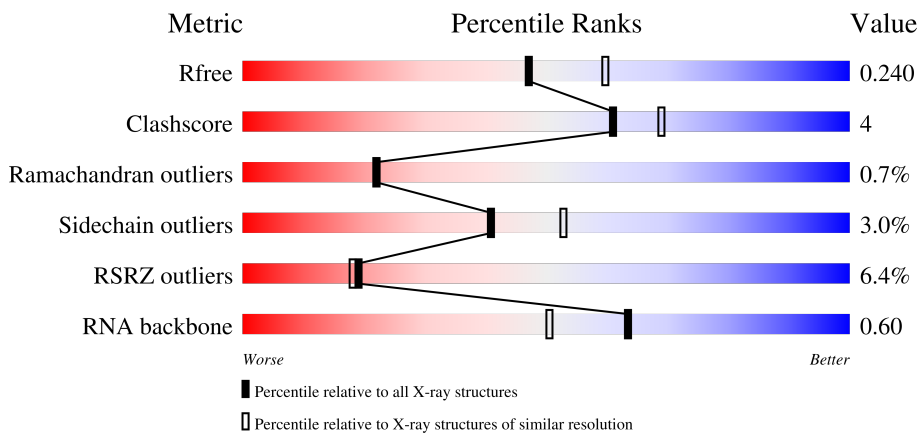
1 Overall quality at a glance

The following experimental techniques were used to determine the structure:

X-RAY DIFFRACTION

The reported resolution of this entry is 2.20 Å.

Percentile scores (ranging between 0-100) for global validation metrics of the entry are shown in the following graphic. The table shows the number of entries on which the scores are based.



Metric	Whole archive (#Entries)	Similar resolution (#Entries, resolution range(Å))
R_{free}	130704	4898 (2.20-2.20)
Clashscore	141614	5594 (2.20-2.20)
Ramachandran outliers	138981	5503 (2.20-2.20)
Sidechain outliers	138945	5504 (2.20-2.20)
RSRZ outliers	127900	4800 (2.20-2.20)
RNA backbone	3102	1032 (2.60-1.80)

The table below summarises the geometric issues observed across the polymeric chains and their fit to the electron density. The red, orange, yellow and green segments of the lower bar indicate the fraction of residues that contain outliers for ≥ 3 , 2, 1 and 0 types of geometric quality criteria respectively. A grey segment represents the fraction of residues that are not modelled. The numeric value for each fraction is indicated below the corresponding segment, with a dot representing fractions $\leq 5\%$. The upper red bar (where present) indicates the fraction of residues that have poor fit to the electron density. The numeric value is given above the bar.

Mol	Chain	Length	Quality of chain
1	A	451	 6% 87% 12%
1	B	451	 6% 88% 11%
2	C	12	 17% 25% 8% 25% 42%
2	D	12	 17% 25% 25% 8% 42%

The following table lists non-polymeric compounds, carbohydrate monomers and non-standard residues in protein, DNA, RNA chains that are outliers for geometric or electron-density-fit criteria:

Mol	Type	Chain	Res	Chirality	Geometry	Clashes	Electron density
6	GOL	A	1622	-	-	X	-

2 Entry composition [i](#)

There are 7 unique types of molecules in this entry. The entry contains 7914 atoms, of which 0 are hydrogens and 0 are deuteriums.

In the tables below, the ZeroOcc column contains the number of atoms modelled with zero occupancy, the AltConf column contains the number of residues with at least one atom in alternate conformation and the Trace column contains the number of residues modelled with at most 2 atoms.

- Molecule 1 is a protein called SERINE PROTEASE SUBUNIT NS3.

Mol	Chain	Residues	Atoms					ZeroOcc	AltConf	Trace
			Total	C	N	O	S			
1	A	451	Total 3609	C 2274	N 645	O 673	S 17	0	0	0
1	B	451	Total 3602	C 2271	N 642	O 672	S 17	0	0	0

There are 12 discrepancies between the modelled and reference sequences:

Chain	Residue	Modelled	Actual	Comment	Reference
A	250	ASP	GLU	conflict	UNP Q2YHF0
A	292	CYS	SER	conflict	UNP Q2YHF0
A	321	SER	THR	conflict	UNP Q2YHF0
A	322	ILE	THR	conflict	UNP Q2YHF0
A	381	ARG	LYS	conflict	UNP Q2YHF0
A	480	LYS	ARG	conflict	UNP Q2YHF0
B	250	ASP	GLU	conflict	UNP Q2YHF0
B	292	CYS	SER	conflict	UNP Q2YHF0
B	321	SER	THR	conflict	UNP Q2YHF0
B	322	ILE	THR	conflict	UNP Q2YHF0
B	381	ARG	LYS	conflict	UNP Q2YHF0
B	480	LYS	ARG	conflict	UNP Q2YHF0

- Molecule 2 is a RNA chain called 5'-R(*AP*GP*AP*CP*UP*AP*AP*CP*AP*AP*CP*U)-3'.

Mol	Chain	Residues	Atoms					ZeroOcc	AltConf	Trace
			Total	C	N	O	P			
2	C	7	Total 138	C 63	N 25	O 44	P 6	0	0	0
2	D	7	Total 138	C 63	N 25	O 44	P 6	0	0	0

- Molecule 3 is ADENOSINE-5'-DIPHOSPHATE (three-letter code: ADP) (formula: C₁₀H₁₅N₅O₁₀P₂).



Mol	Chain	Residues	Atoms					ZeroOcc	AltConf
			Total	C	N	O	P		
3	A	1	Total	C	N	O	P	0	0
			27	10	5	10	2		
3	B	1	Total	C	N	O	P	0	0
			27	10	5	10	2		

- Molecule 4 is MANGANESE (II) ION (three-letter code: MN) (formula: Mn).

Mol	Chain	Residues	Atoms		ZeroOcc	AltConf
			Total	Mn		
4	A	1	Total	Mn	0	0
			1	1		
4	B	1	Total	Mn	0	0
			1	1		

- Molecule 5 is CHLORIDE ION (three-letter code: CL) (formula: Cl).

Mol	Chain	Residues	Atoms		ZeroOcc	AltConf
			Total	Cl		
5	A	1	Total	Cl	0	0
			1	1		
5	B	1	Total	Cl	0	0
			1	1		

- Molecule 6 is GLYCEROL (three-letter code: GOL) (formula: C₃H₈O₃).



Mol	Chain	Residues	Atoms	ZeroOcc	AltConf
6	A	1	Total C O 6 3 3	0	0
6	B	1	Total C O 6 3 3	0	0

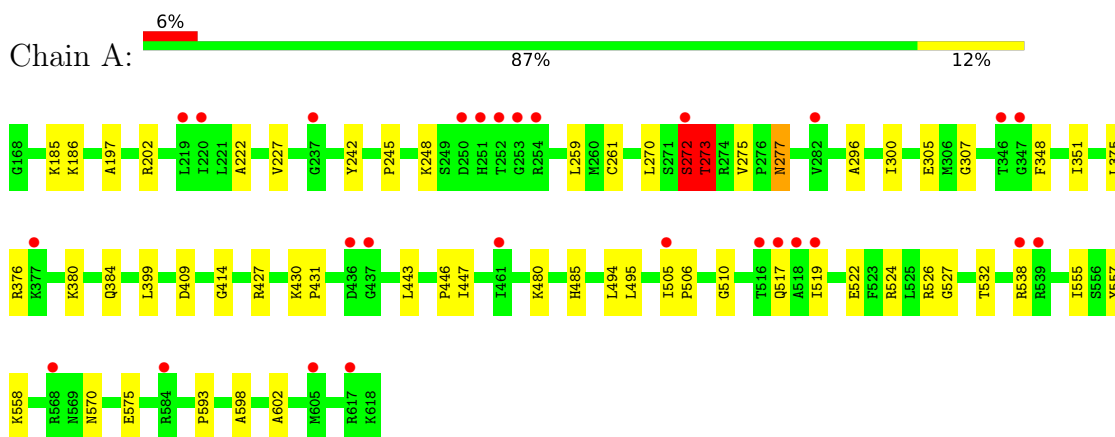
- Molecule 7 is water.

Mol	Chain	Residues	Atoms	ZeroOcc	AltConf
7	A	174	Total O 174 174	0	0
7	B	166	Total O 166 166	0	0
7	C	6	Total O 6 6	0	0
7	D	11	Total O 11 11	0	0

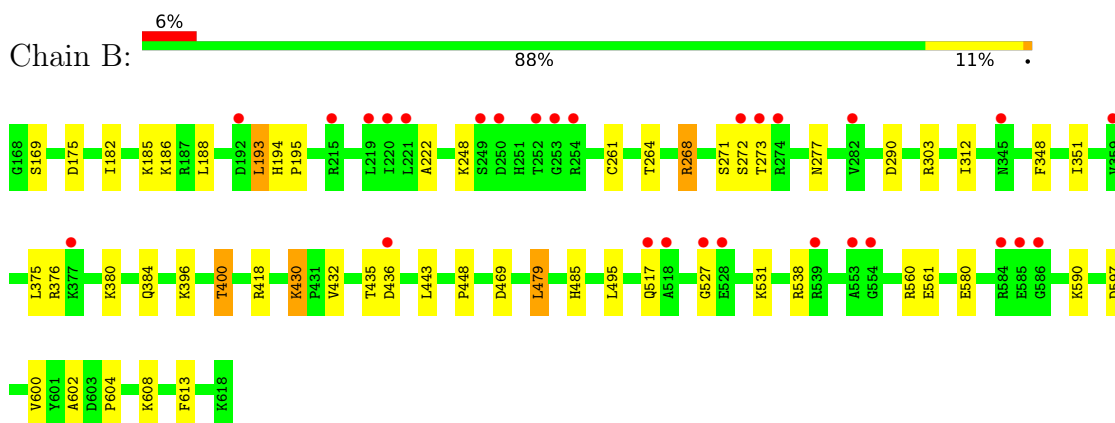
3 Residue-property plots [i](#)

These plots are drawn for all protein, RNA, DNA and oligosaccharide chains in the entry. The first graphic for a chain summarises the proportions of the various outlier classes displayed in the second graphic. The second graphic shows the sequence view annotated by issues in geometry and electron density. Residues are color-coded according to the number of geometric quality criteria for which they contain at least one outlier: green = 0, yellow = 1, orange = 2 and red = 3 or more. A red dot above a residue indicates a poor fit to the electron density ($RSRZ > 2$). Stretches of 2 or more consecutive residues without any outlier are shown as a green connector. Residues present in the sample, but not in the model, are shown in grey.

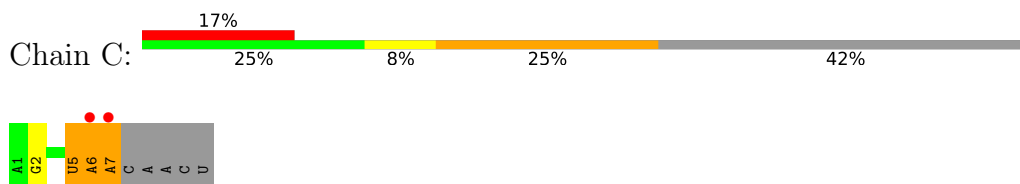
- Molecule 1: SERINE PROTEASE SUBUNIT NS3



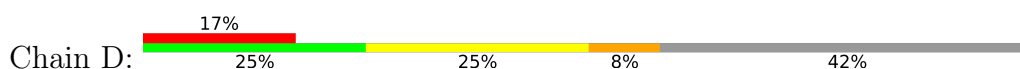
- Molecule 1: SERINE PROTEASE SUBUNIT NS3

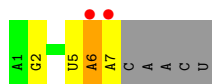


- Molecule 2: 5'-R(*AP*GP*AP*CP*UP*AP*AP*CP*AP*AP*CP*U)-3'



- Molecule 2: 5'-R(*AP*GP*AP*CP*UP*AP*AP*CP*AP*AP*CP*U)-3'





4 Data and refinement statistics

Property	Value	Source
Space group	C 1 2 1	Depositor
Cell constants a, b, c, α , β , γ	133.02Å 104.79Å 72.97Å 90.00° 115.91° 90.00°	Depositor
Resolution (Å)	20.00 – 2.20 19.94 – 2.20	Depositor EDS
% Data completeness (in resolution range)	100.0 (20.00-2.20) 100.0 (19.94-2.20)	Depositor EDS
R_{merge}	0.08	Depositor
R_{sym}	(Not available)	Depositor
$\langle I/\sigma(I) \rangle$ ¹	2.17 (at 2.19Å)	Xtrriage
Refinement program	REFMAC 5.2.0019	Depositor
R, R_{free}	0.192 , 0.238 0.192 , 0.240	Depositor DCC
R_{free} test set	2304 reflections (5.05%)	wwPDB-VP
Wilson B-factor (Å ²)	35.9	Xtrriage
Anisotropy	0.027	Xtrriage
Bulk solvent k_{sol} (e/Å ³), B_{sol} (Å ²)	0.37 , 44.1	EDS
L-test for twinning ²	$\langle L \rangle = 0.49$, $\langle L^2 \rangle = 0.32$	Xtrriage
Estimated twinning fraction	No twinning to report.	Xtrriage
F_o, F_c correlation	0.95	EDS
Total number of atoms	7914	wwPDB-VP
Average B, all atoms (Å ²)	35.0	wwPDB-VP

Xtrriage's analysis on translational NCS is as follows: *The largest off-origin peak in the Patterson function is 5.93% of the height of the origin peak. No significant pseudotranslation is detected.*

¹Intensities estimated from amplitudes.

²Theoretical values of $\langle |L| \rangle$, $\langle L^2 \rangle$ for acentric reflections are 0.5, 0.333 respectively for untwinned datasets, and 0.375, 0.2 for perfectly twinned datasets.

5 Model quality [i](#)

5.1 Standard geometry [i](#)

Bond lengths and bond angles in the following residue types are not validated in this section: ADP, CL, GOL, MN

The Z score for a bond length (or angle) is the number of standard deviations the observed value is removed from the expected value. A bond length (or angle) with $|Z| > 5$ is considered an outlier worth inspection. RMSZ is the root-mean-square of all Z scores of the bond lengths (or angles).

Mol	Chain	Bond lengths		Bond angles	
		RMSZ	# Z >5	RMSZ	# Z >5
1	A	0.42	0/3690	0.59	2/4994 (0.0%)
1	B	0.43	0/3683	0.58	1/4987 (0.0%)
2	C	0.82	0/154	1.32	1/238 (0.4%)
2	D	0.79	0/154	1.27	0/238
All	All	0.44	0/7681	0.63	4/10457 (0.0%)

There are no bond length outliers.

All (4) bond angle outliers are listed below:

Mol	Chain	Res	Type	Atoms	Z	Observed(°)	Ideal(°)
2	C	5	U	P-O3'-C3'	7.59	128.81	119.70
1	A	272	SER	C-N-CA	6.38	137.66	121.70
1	A	273	THR	N-CA-CB	5.45	120.65	110.30
1	B	193	LEU	CA-CB-CG	5.38	127.67	115.30

There are no chirality outliers.

There are no planarity outliers.

5.2 Too-close contacts [i](#)

In the following table, the Non-H and H(model) columns list the number of non-hydrogen atoms and hydrogen atoms in the chain respectively. The H(added) column lists the number of hydrogen atoms added and optimized by MolProbity. The Clashes column lists the number of clashes within the asymmetric unit, whereas Symm-Clashes lists symmetry-related clashes.

Mol	Chain	Non-H	H(model)	H(added)	Clashes	Symm-Clashes
1	A	3609	0	3600	36	0
1	B	3602	0	3589	31	0
2	C	138	0	73	2	0

Continued on next page...

Continued from previous page...

Mol	Chain	Non-H	H(model)	H(added)	Clashes	Symm-Clashes
2	D	138	0	73	2	0
3	A	27	0	12	0	0
3	B	27	0	12	0	0
4	A	1	0	0	0	0
4	B	1	0	0	0	0
5	A	1	0	0	0	0
5	B	1	0	0	0	0
6	A	6	0	8	5	0
6	B	6	0	8	2	0
7	A	174	0	0	1	0
7	B	166	0	0	1	0
7	C	6	0	0	0	0
7	D	11	0	0	0	0
All	All	7914	0	7375	67	0

The all-atom clashscore is defined as the number of clashes found per 1000 atoms (including hydrogen atoms). The all-atom clashscore for this structure is 4.

All (67) close contacts within the same asymmetric unit are listed below, sorted by their clash magnitude.

Atom-1	Atom-2	Interatomic distance (Å)	Clash overlap (Å)
1:A:272:SER:HB3	1:A:273:THR:HG23	1.34	1.06
1:A:272:SER:CB	1:A:273:THR:HG23	1.96	0.94
1:A:376:ARG:HH22	1:A:384:GLN:HE21	1.24	0.81
1:A:598:ALA:HB1	6:A:1622:GOL:H32	1.64	0.80
1:B:376:ARG:HH22	1:B:384:GLN:HE21	1.30	0.79
1:A:186:LYS:HG3	1:A:307:GLY:HA2	1.73	0.69
1:B:185:LYS:O	1:B:186:LYS:HB2	1.94	0.68
1:B:448:PRO:HB2	1:B:479:LEU:HB2	1.75	0.67
1:A:443:LEU:HB2	6:A:1622:GOL:H31	1.78	0.66
1:A:272:SER:HB3	1:A:273:THR:CG2	2.22	0.63
1:B:396:LYS:O	1:B:400:THR:HB	1.99	0.62
1:B:430:LYS:HB3	7:B:2095:HOH:O	1.99	0.62
1:A:222:ALA:O	1:A:261:CYS:HA	2.00	0.60
1:A:185:LYS:O	1:A:186:LYS:HB2	2.02	0.59
1:A:598:ALA:CB	6:A:1622:GOL:H32	2.33	0.58
1:B:375:LEU:O	1:B:380:LYS:HB2	2.04	0.57
1:A:270:LEU:HD11	1:A:494:LEU:HD22	1.86	0.56
1:B:222:ALA:O	1:B:261:CYS:HA	2.04	0.56
1:A:376:ARG:HH22	1:A:384:GLN:NE2	1.99	0.55
1:A:485:HIS:HE1	7:A:2106:HOH:O	1.90	0.55

Continued on next page...

Continued from previous page...

Atom-1	Atom-2	Interatomic distance (Å)	Clash overlap (Å)
1:B:268:ARG:HG2	1:B:268:ARG:NH1	2.21	0.55
1:A:277:ASN:C	1:A:277:ASN:HD22	2.09	0.54
2:C:6:A:H2'	2:C:7:A:H5''	1.91	0.53
1:A:245:PRO:O	1:B:248:LYS:HD3	2.10	0.51
1:A:495:LEU:HD11	1:A:506:PRO:HB2	1.93	0.51
1:B:268:ARG:HG2	1:B:268:ARG:HH11	1.74	0.51
1:B:348:PHE:HB3	1:B:351:ILE:HD12	1.94	0.49
1:A:532:THR:HG21	1:A:555:ILE:O	2.12	0.49
1:B:418:ARG:HH11	1:B:418:ARG:HG2	1.78	0.49
1:B:169:SER:HB3	1:B:175:ASP:HA	1.94	0.49
1:A:348:PHE:HB3	1:A:351:ILE:HD12	1.94	0.49
1:A:197:ALA:O	1:A:202:ARG:NH1	2.46	0.49
1:A:430:LYS:HG2	1:A:485:HIS:CE1	2.47	0.48
1:B:580:GLU:HG2	1:B:590:LYS:HG2	1.96	0.48
1:A:524:ARG:HD2	1:A:526:ARG:HH12	1.78	0.48
1:B:182:ILE:HD12	1:B:312:ILE:HD11	1.95	0.47
1:A:227:VAL:HG22	1:A:414:GLY:HA3	1.95	0.47
1:B:271:SER:O	1:B:273:THR:N	2.47	0.47
1:A:519:ILE:O	1:A:522:GLU:HG2	2.15	0.46
1:B:430:LYS:HD2	1:B:432:VAL:CG2	2.46	0.46
1:A:296:ALA:O	1:A:300:ILE:HG13	2.16	0.45
1:A:602:ALA:HB2	6:A:1622:GOL:H11	1.99	0.45
1:B:268:ARG:HH11	1:B:268:ARG:CG	2.30	0.45
1:B:538:ARG:HA	1:B:538:ARG:HD3	1.78	0.45
1:A:272:SER:HB2	1:A:273:THR:HG23	1.93	0.44
1:B:602:ALA:HB2	6:B:1622:GOL:H32	2.00	0.44
1:A:375:LEU:O	1:A:380:LYS:HB2	2.18	0.44
1:B:430:LYS:NZ	1:B:485:HIS:HD2	2.15	0.44
1:B:469:ASP:OD1	1:B:469:ASP:N	2.50	0.44
1:A:427:ARG:NH2	1:A:446:PRO:O	2.50	0.44
1:B:560:ARG:HD2	1:B:613:PHE:O	2.17	0.44
1:B:194:HIS:HD2	1:B:195:PRO:O	2.00	0.44
1:B:597:ASP:O	1:B:600:VAL:HG22	2.17	0.44
1:B:264:THR:CG2	2:D:6:A:H1'	2.48	0.43
1:A:430:LYS:HB2	1:A:447:ILE:HD11	1.99	0.43
1:B:290:ASP:OD1	2:D:2:G:N2	2.51	0.43
1:A:480:LYS:HB3	1:A:480:LYS:HE2	1.88	0.43
1:A:602:ALA:CB	6:A:1622:GOL:H11	2.49	0.42
1:B:443:LEU:H	6:B:1622:GOL:C1	2.32	0.42
1:A:570:ASN:O	1:A:593:PRO:HD2	2.19	0.42
1:B:430:LYS:HD2	1:B:432:VAL:HG22	2.02	0.42

Continued on next page...

Continued from previous page...

Atom-1	Atom-2	Interatomic distance (Å)	Clash overlap (Å)
1:B:303:ARG:HD2	1:B:303:ARG:HA	1.76	0.42
1:A:557:TYR:CE2	1:A:558:LYS:HE3	2.55	0.42
1:A:242:TYR:CE2	1:A:259:LEU:HD13	2.56	0.41
1:A:430:LYS:HA	1:A:431:PRO:HD3	1.91	0.40
1:A:409:ASP:HB2	2:C:2:G:O2'	2.21	0.40
1:B:604:PRO:O	1:B:608:LYS:HG2	2.21	0.40

There are no symmetry-related clashes.

5.3 Torsion angles [i](#)

5.3.1 Protein backbone [i](#)

In the following table, the Percentiles column shows the percent Ramachandran outliers of the chain as a percentile score with respect to all X-ray entries followed by that with respect to entries of similar resolution.

The Analysed column shows the number of residues for which the backbone conformation was analysed, and the total number of residues.

Mol	Chain	Analysed	Favoured	Allowed	Outliers	Percentiles	
1	A	449/451 (100%)	429 (96%)	16 (4%)	4 (1%)	17	16
1	B	449/451 (100%)	431 (96%)	16 (4%)	2 (0%)	34	37
All	All	898/902 (100%)	860 (96%)	32 (4%)	6 (1%)	22	22

All (6) Ramachandran outliers are listed below:

Mol	Chain	Res	Type
1	A	273	THR
1	B	272	SER
1	B	527	GLY
1	A	272	SER
1	A	527	GLY
1	A	510	GLY

5.3.2 Protein sidechains [i](#)

In the following table, the Percentiles column shows the percent sidechain outliers of the chain as a percentile score with respect to all X-ray entries followed by that with respect to entries of similar resolution.

The Analysed column shows the number of residues for which the sidechain conformation was analysed, and the total number of residues.

Mol	Chain	Analysed	Rotameric	Outliers	Percentiles	
1	A	388/388 (100%)	378 (97%)	10 (3%)	46	58
1	B	387/388 (100%)	374 (97%)	13 (3%)	37	47
All	All	775/776 (100%)	752 (97%)	23 (3%)	41	53

All (23) residues with a non-rotameric sidechain are listed below:

Mol	Chain	Res	Type
1	A	248	LYS
1	A	272	SER
1	A	275	VAL
1	A	277	ASN
1	A	305	GLU
1	A	399	LEU
1	A	505	ILE
1	A	517	GLN
1	A	538	ARG
1	A	575	GLU
1	B	188	LEU
1	B	193	LEU
1	B	268	ARG
1	B	277	ASN
1	B	400	THR
1	B	430	LYS
1	B	435	THR
1	B	436	ASP
1	B	479	LEU
1	B	495	LEU
1	B	517	GLN
1	B	531	LYS
1	B	561	GLU

Sometimes sidechains can be flipped to improve hydrogen bonding and reduce clashes. All (9) such sidechains are listed below:

Mol	Chain	Res	Type
1	A	194	HIS
1	A	277	ASN
1	A	384	GLN
1	A	529	GLN

Continued on next page...

Continued from previous page...

Mol	Chain	Res	Type
1	B	194	HIS
1	B	279	ASN
1	B	384	GLN
1	B	485	HIS
1	B	529	GLN

5.3.3 RNA [i](#)

Mol	Chain	Analysed	Backbone Outliers	Pucker Outliers
2	C	6/12 (50%)	3 (50%)	1 (16%)
2	D	6/12 (50%)	3 (50%)	0
All	All	12/24 (50%)	6 (50%)	1 (8%)

All (6) RNA backbone outliers are listed below:

Mol	Chain	Res	Type
2	C	5	U
2	C	6	A
2	C	7	A
2	D	5	U
2	D	6	A
2	D	7	A

All (1) RNA pucker outliers are listed below:

Mol	Chain	Res	Type
2	C	5	U

5.4 Non-standard residues in protein, DNA, RNA chains [i](#)

There are no non-standard protein/DNA/RNA residues in this entry.

5.5 Carbohydrates [i](#)

There are no monosaccharides in this entry.

5.6 Ligand geometry [i](#)

Of 8 ligands modelled in this entry, 4 are monoatomic - leaving 4 for Mogul analysis.

In the following table, the Counts columns list the number of bonds (or angles) for which Mogul statistics could be retrieved, the number of bonds (or angles) that are observed in the model and the number of bonds (or angles) that are defined in the Chemical Component Dictionary. The Link column lists molecule types, if any, to which the group is linked. The Z score for a bond length (or angle) is the number of standard deviations the observed value is removed from the expected value. A bond length (or angle) with $|Z| > 2$ is considered an outlier worth inspection. RMSZ is the root-mean-square of all Z scores of the bond lengths (or angles).

Mol	Type	Chain	Res	Link	Bond lengths			Bond angles		
					Counts	RMSZ	# Z > 2	Counts	RMSZ	# Z > 2
6	GOL	A	1622	-	5,5,5	0.43	0	5,5,5	0.54	0
3	ADP	A	1619	4	24,29,29	0.98	2 (8%)	29,45,45	1.21	2 (6%)
3	ADP	B	1619	4	24,29,29	1.01	2 (8%)	29,45,45	1.23	3 (10%)
6	GOL	B	1622	-	5,5,5	0.33	0	5,5,5	0.25	0

In the following table, the Chirals column lists the number of chiral outliers, the number of chiral centers analysed, the number of these observed in the model and the number defined in the Chemical Component Dictionary. Similar counts are reported in the Torsion and Rings columns. '-' means no outliers of that kind were identified.

Mol	Type	Chain	Res	Link	Chirals	Torsions	Rings
6	GOL	A	1622	-	-	2/4/4/4	-
3	ADP	A	1619	4	-	1/12/32/32	0/3/3/3
3	ADP	B	1619	4	-	1/12/32/32	0/3/3/3
6	GOL	B	1622	-	-	0/4/4/4	-

All (4) bond length outliers are listed below:

Mol	Chain	Res	Type	Atoms	Z	Observed(Å)	Ideal(Å)
3	B	1619	ADP	C5-C4	2.66	1.48	1.40
3	A	1619	ADP	C5-C4	2.63	1.47	1.40
3	B	1619	ADP	C2-N3	2.16	1.35	1.32
3	A	1619	ADP	C2-N3	2.01	1.35	1.32

All (5) bond angle outliers are listed below:

Mol	Chain	Res	Type	Atoms	Z	Observed(°)	Ideal(°)
3	A	1619	ADP	N3-C2-N1	-3.39	123.38	128.68
3	B	1619	ADP	N3-C2-N1	-3.31	123.50	128.68
3	B	1619	ADP	O3B-PB-O2B	2.26	116.26	107.64
3	B	1619	ADP	C4-C5-N7	-2.16	107.14	109.40
3	A	1619	ADP	C4-C5-N7	-2.13	107.17	109.40

There are no chirality outliers.

All (4) torsion outliers are listed below:

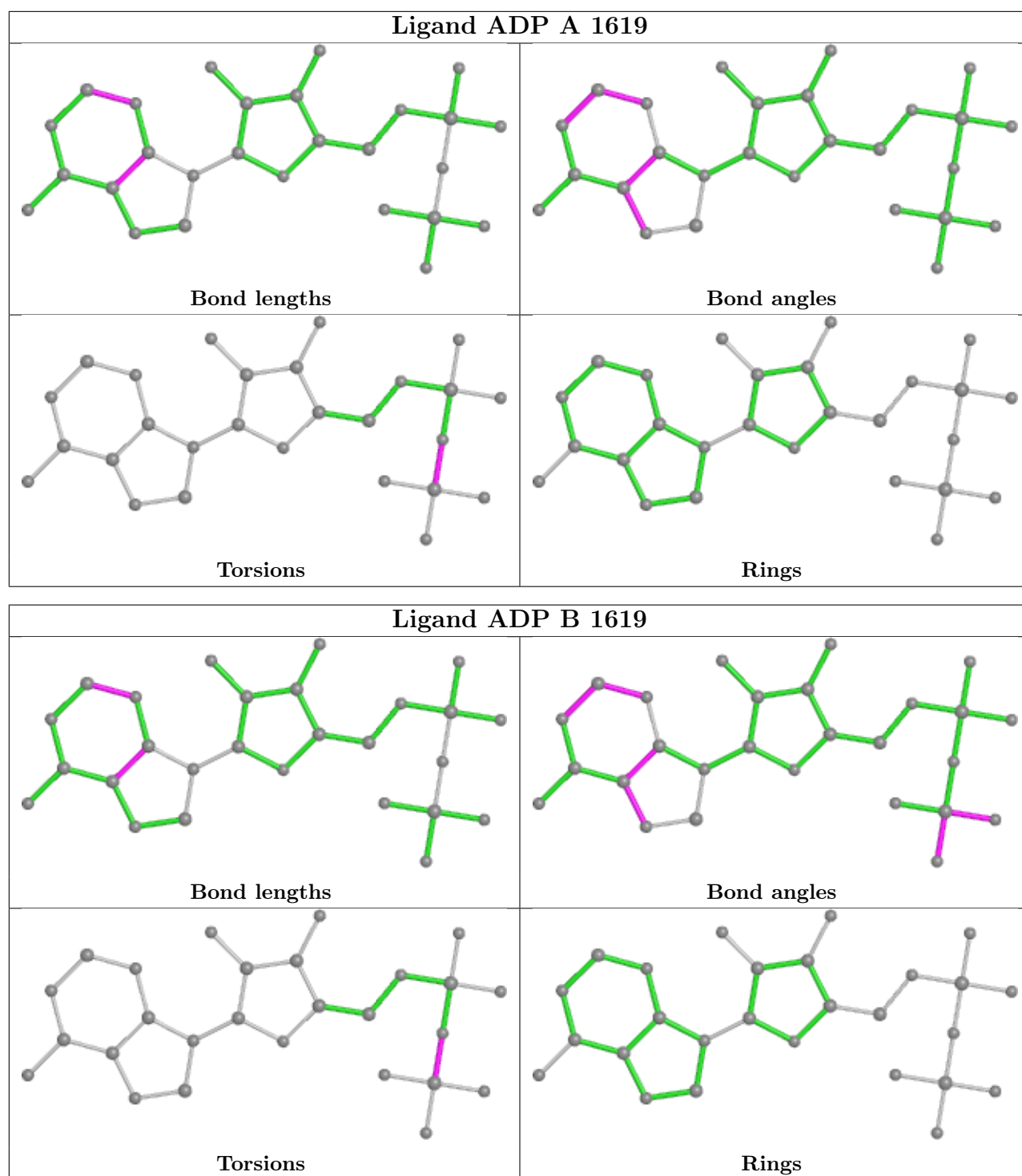
Mol	Chain	Res	Type	Atoms
3	A	1619	ADP	PA-O3A-PB-O2B
6	A	1622	GOL	C1-C2-C3-O3
6	A	1622	GOL	O2-C2-C3-O3
3	B	1619	ADP	PA-O3A-PB-O2B

There are no ring outliers.

2 monomers are involved in 7 short contacts:

Mol	Chain	Res	Type	Clashes	Symm-Clashes
6	A	1622	GOL	5	0
6	B	1622	GOL	2	0

The following is a two-dimensional graphical depiction of Mogul quality analysis of bond lengths, bond angles, torsion angles, and ring geometry for all instances of the Ligand of Interest. In addition, ligands with molecular weight > 250 and outliers as shown on the validation Tables will also be included. For torsion angles, if less than 5% of the Mogul distribution of torsion angles is within 10 degrees of the torsion angle in question, then that torsion angle is considered an outlier. Any bond that is central to one or more torsion angles identified as an outlier by Mogul will be highlighted in the graph. For rings, the root-mean-square deviation (RMSD) between the ring in question and similar rings identified by Mogul is calculated over all ring torsion angles. If the average RMSD is greater than 60 degrees and the minimal RMSD between the ring in question and any Mogul-identified rings is also greater than 60 degrees, then that ring is considered an outlier. The outliers are highlighted in purple. The color gray indicates Mogul did not find sufficient equivalents in the CSD to analyse the geometry.



5.7 Other polymers [\(i\)](#)

There are no such residues in this entry.

5.8 Polymer linkage issues

There are no chain breaks in this entry.

6 Fit of model and data

6.1 Protein, DNA and RNA chains

In the following table, the column labelled ‘#RSRZ > 2’ contains the number (and percentage) of RSRZ outliers, followed by percent RSRZ outliers for the chain as percentile scores relative to all X-ray entries and entries of similar resolution. The OWAB column contains the minimum, median, 95th percentile and maximum values of the occupancy-weighted average B-factor per residue. The column labelled ‘Q < 0.9’ lists the number of (and percentage) of residues with an average occupancy less than 0.9.

Mol	Chain	Analysed	<RSRZ>	#RSRZ>2	OWAB(Å ²)	Q<0.9
1	A	451/451 (100%)	0.23	27 (5%) 21 20	26, 34, 44, 54	1 (0%)
1	B	451/451 (100%)	0.25	28 (6%) 20 19	26, 34, 44, 54	1 (0%)
2	C	7/12 (58%)	0.69	2 (28%) 0 0	28, 31, 46, 47	0
2	D	7/12 (58%)	0.58	2 (28%) 0 0	28, 30, 56, 59	0
All	All	916/926 (98%)	0.25	59 (6%) 19 18	26, 34, 44, 59	2 (0%)

All (59) RSRZ outliers are listed below:

Mol	Chain	Res	Type	RSRZ
1	B	585	GLU	5.2
1	B	274	ARG	5.2
1	B	584	ARG	4.6
1	B	272	SER	4.5
1	A	272	SER	4.5
1	A	519	ILE	4.5
1	A	517	GLN	4.2
1	B	517	GLN	4.2
1	B	586	GLY	4.1
1	B	252	THR	4.0
1	A	518	ALA	4.0
2	D	7	A	3.9
2	C	7	A	3.8
1	B	436	ASP	3.8
1	A	346	THR	3.7
1	A	254	ARG	3.6
1	B	219	LEU	3.5
1	A	252	THR	3.4
2	D	6	A	3.3
1	A	584	ARG	3.3
1	B	254	ARG	3.3

Continued on next page...

Continued from previous page...

Mol	Chain	Res	Type	RSRZ
1	A	436	ASP	3.1
1	A	219	LEU	3.0
2	C	6	A	3.0
1	B	192	ASP	3.0
1	A	237	GLY	3.0
1	B	249	SER	2.9
1	B	528	GLU	2.9
1	A	220	ILE	2.9
1	B	553	ALA	2.9
1	B	539	ARG	2.9
1	A	253	GLY	2.8
1	B	250	ASP	2.8
1	A	516	THR	2.8
1	B	377	LYS	2.6
1	B	345	ASN	2.6
1	A	251	HIS	2.6
1	B	253	GLY	2.6
1	B	518	ALA	2.6
1	B	273	THR	2.6
1	A	461	ILE	2.6
1	A	538	ARG	2.5
1	B	282	VAL	2.5
1	A	437	GLY	2.4
1	B	220	ILE	2.4
1	A	377	LYS	2.3
1	B	554	GLY	2.3
1	A	282	VAL	2.3
1	B	527	GLY	2.2
1	A	617	ARG	2.2
1	A	250	ASP	2.2
1	A	539	ARG	2.1
1	A	568	ARG	2.1
1	B	221	LEU	2.1
1	B	359	VAL	2.1
1	A	505	ILE	2.1
1	A	347	GLY	2.1
1	B	215	ARG	2.0
1	A	605	MET	2.0

6.2 Non-standard residues in protein, DNA, RNA chains

There are no non-standard protein/DNA/RNA residues in this entry.

6.3 Carbohydrates

There are no monosaccharides in this entry.

6.4 Ligands

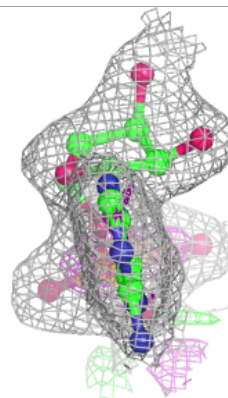
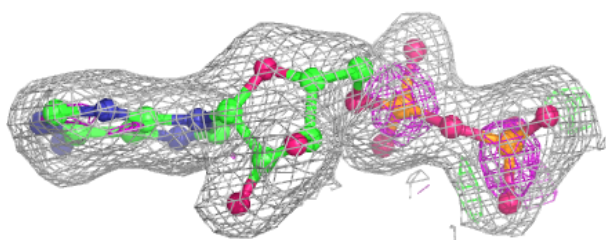
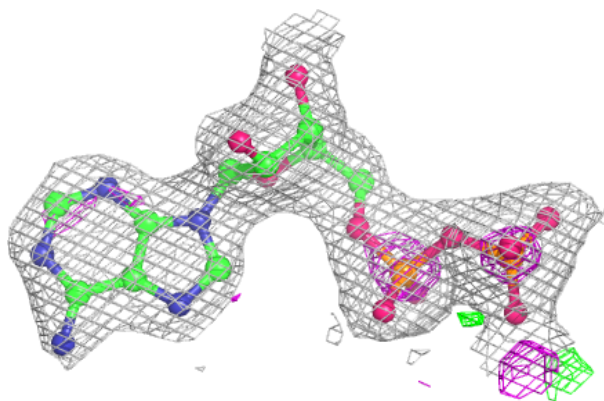
In the following table, the Atoms column lists the number of modelled atoms in the group and the number defined in the chemical component dictionary. The B-factors column lists the minimum, median, 95th percentile and maximum values of B factors of atoms in the group. The column labelled 'Q< 0.9' lists the number of atoms with occupancy less than 0.9.

Mol	Type	Chain	Res	Atoms	RSCC	RSR	B-factors(\AA^2)	Q<0.9
6	GOL	B	1622	6/6	0.93	0.12	41,41,41,42	0
6	GOL	A	1622	6/6	0.94	0.10	41,43,44,44	0
3	ADP	A	1619	27/27	0.95	0.12	26,34,39,39	0
3	ADP	B	1619	27/27	0.95	0.12	25,37,41,41	0
5	CL	B	1621	1/1	0.97	0.09	32,32,32,32	0
4	MN	B	1620	1/1	0.99	0.02	25,25,25,25	0
4	MN	A	1620	1/1	0.99	0.01	27,27,27,27	0
5	CL	A	1621	1/1	1.00	0.02	27,27,27,27	0

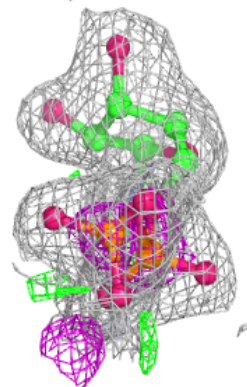
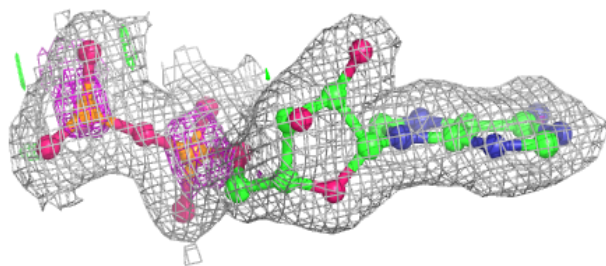
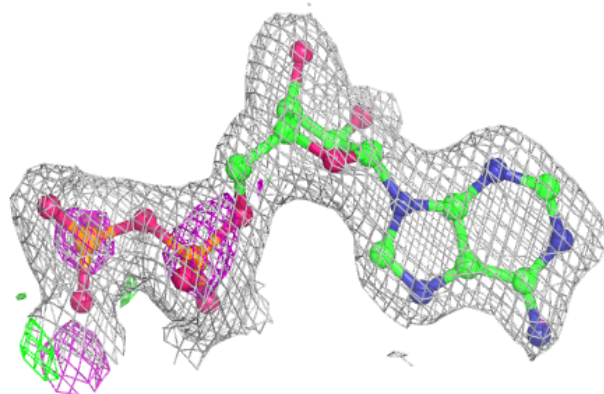
The following is a graphical depiction of the model fit to experimental electron density of all instances of the Ligand of Interest. In addition, ligands with molecular weight > 250 and outliers as shown on the geometry validation Tables will also be included. Each fit is shown from different orientation to approximate a three-dimensional view.

Electron density around ADP A 1619:

$2mF_o-DF_c$ (at 0.7 rmsd) in gray
 mF_o-DF_c (at 3 rmsd) in purple (negative)
and green (positive)

**Electron density around ADP B 1619:**

$2mF_o-DF_c$ (at 0.7 rmsd) in gray
 mF_o-DF_c (at 3 rmsd) in purple (negative)
and green (positive)



6.5 Other polymers [i](#)

There are no such residues in this entry.