



Full wwPDB EM Validation Report ⓘ

Sep 25, 2023 – 10:24 AM JST

PDB ID : 8JMN
EMDB ID : EMD-36424
Title : Cryo-EM structure of the gastric proton pump with bound DQ-21
Authors : Abe, K.; Yokoshima, S.; Yoshimori, A.
Deposited on : 2023-06-05
Resolution : 2.26 Å (reported)

This is a Full wwPDB EM Validation Report for a publicly released PDB entry.

We welcome your comments at validation@mail.wwpdb.org

A user guide is available at

<https://www.wwpdb.org/validation/2017/EMValidationReportHelp>

with specific help available everywhere you see the ⓘ symbol.

The types of validation reports are described at

<http://www.wwpdb.org/validation/2017/FAQs#types>.

The following versions of software and data (see [references ⓘ](#)) were used in the production of this report:

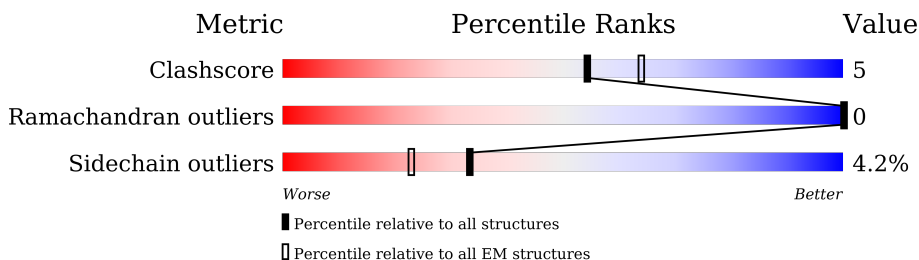
EMDB validation analysis : 0.0.1.dev50
Mogul : 1.8.5 (274361), CSD as541be (2020)
MolProbity : 4.02b-467
buster-report : 1.1.7 (2018)
Percentile statistics : 20191225.v01 (using entries in the PDB archive December 25th 2019)
MapQ : 1.9.9
Ideal geometry (proteins) : Engh & Huber (2001)
Ideal geometry (DNA, RNA) : Parkinson et al. (1996)
Validation Pipeline (wwPDB-VP) : 2.35.1

1 Overall quality at a glance

The following experimental techniques were used to determine the structure:
ELECTRON MICROSCOPY

The reported resolution of this entry is 2.26 Å.

Percentile scores (ranging between 0-100) for global validation metrics of the entry are shown in the following graphic. The table shows the number of entries on which the scores are based.



Metric	Whole archive (#Entries)	EM structures (#Entries)
Clashscore	158937	4297
Ramachandran outliers	154571	4023
Sidechain outliers	154315	3826

The table below summarises the geometric issues observed across the polymeric chains and their fit to the map. The red, orange, yellow and green segments of the bar indicate the fraction of residues that contain outliers for ≥ 3 , 2, 1 and 0 types of geometric quality criteria respectively. A grey segment represents the fraction of residues that are not modelled. The numeric value for each fraction is indicated below the corresponding segment, with a dot representing fractions $\leq 5\%$. The upper red bar (where present) indicates the fraction of residues that have poor fit to the EM map (all-atom inclusion $< 40\%$). The numeric value is given above the bar.

Mol	Chain	Length	Quality of chain
1	A	1033	 5% 81% 13% • 5%
2	B	290	 8% 79% 13% • 8%

2 Entry composition [i](#)

There are 8 unique types of molecules in this entry. The entry contains 10491 atoms, of which 0 are hydrogens and 0 are deuteriums.

In the tables below, the AltConf column contains the number of residues with at least one atom in alternate conformation and the Trace column contains the number of residues modelled with at most 2 atoms.

- Molecule 1 is a protein called Sodium/potassium-transporting ATPase subunit alpha.

Mol	Chain	Residues	Atoms							AltConf	Trace
			Total	Be	C	F	N	O	S		
1	A	983	7633	1	4872	3	1288	1416	53	0	0

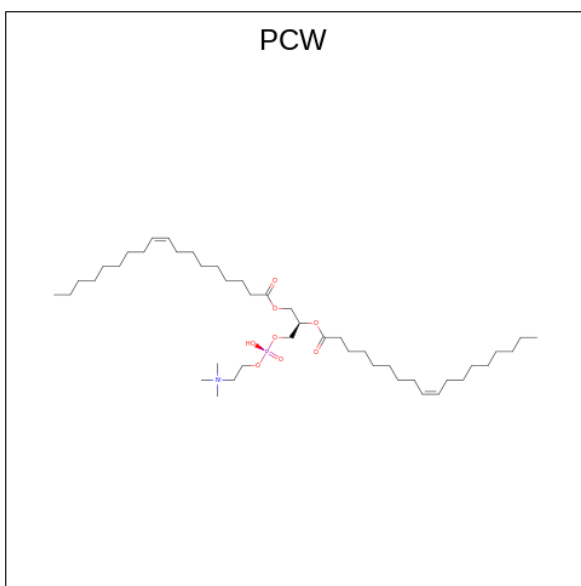
There is a discrepancy between the modelled and reference sequences:

Chain	Residue	Modelled	Actual	Comment	Reference
A	1005	SER	GLY	engineered mutation	UNP F1RM59

- Molecule 2 is a protein called Potassium-transporting ATPase subunit beta.

Mol	Chain	Residues	Atoms					AltConf	Trace
			Total	C	N	O	S		
2	B	268	2142	1388	356	386	12	0	0

- Molecule 3 is 1,2-DIOLEOYL-SN-GLYCERO-3-PHOSPHOCHOLINE (three-letter code: PCW) (formula: $C_{44}H_{85}NO_8P$).

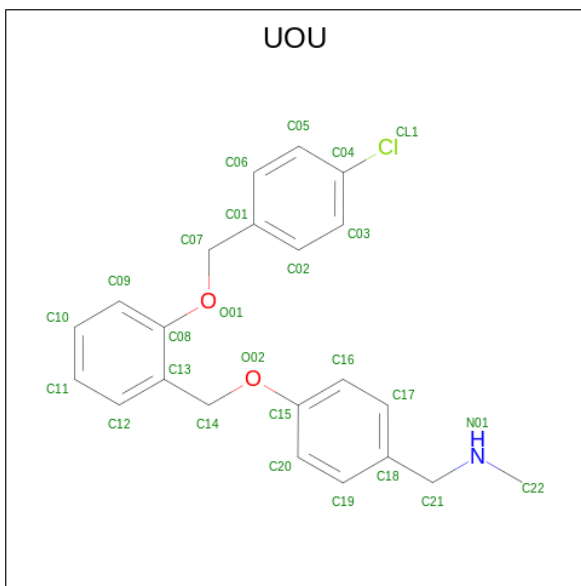


Mol	Chain	Residues	Atoms					AltConf
			Total	C	N	O	P	
3	A	1	Total 39	C 29	N 1	O 8	P 1	0
3	A	1	Total 54	C 44	N 1	O 8	P 1	0
3	A	1	Total 50	C 40	N 1	O 8	P 1	0
3	A	1	Total 49	C 39	N 1	O 8	P 1	0
3	B	1	Total 54	C 44	N 1	O 8	P 1	0

- Molecule 4 is MAGNESIUM ION (three-letter code: MG) (formula: Mg).

Mol	Chain	Residues	Atoms		AltConf
			Total	Mg	
4	A	1	Total 1	Mg 1	0

- Molecule 5 is 1-[4-[[2-[(4-chlorophenyl)methoxy]phenyl]methoxy]phenyl]-N-methyl-methanamine (three-letter code: UOU) (formula: C₂₂H₂₂ClNO₂) (labeled as "Ligand of Interest" by depositor).



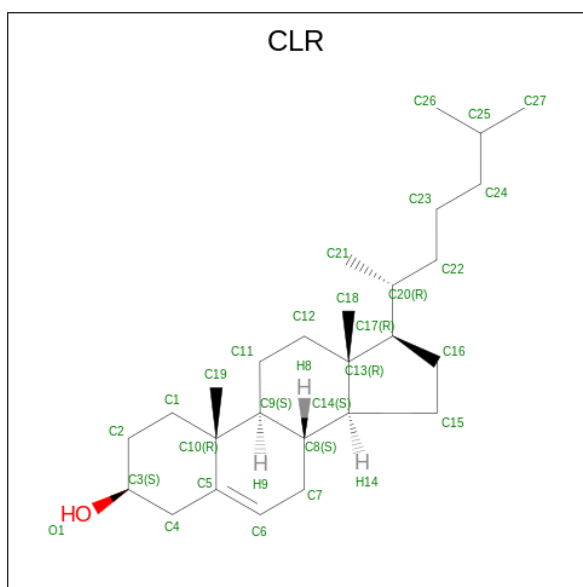
Mol	Chain	Residues	Atoms				AltConf	
			Total	C	Cl	N		O
5	A	1	Total 26	C 22	Cl 1	N 1	O 2	0

- Molecule 6 is 2-acetamido-2-deoxy-beta-D-glucopyranose (three-letter code: NAG) (formula: C₈H₁₅NO₆).



Mol	Chain	Residues	Atoms				AltConf
6	B	1	Total	C	N	O	0
			14	8	1	5	
6	B	1	Total	C	N	O	0
			14	8	1	5	
6	B	1	Total	C	N	O	0
			14	8	1	5	

- Molecule 7 is CHOLESTEROL (three-letter code: CLR) (formula: $C_{27}H_{46}O$).



Mol	Chain	Residues	Atoms			AltConf
7	B	1	Total	C	O	0
			28	27	1	

- Molecule 8 is water.

Mol	Chain	Residues	Atoms		AltConf
8	A	260	Total 260	O 260	0
8	B	113	Total 113	O 113	0

4 Experimental information

Property	Value	Source
EM reconstruction method	SINGLE PARTICLE	Depositor
Imposed symmetry	POINT, Not provided	
Number of particles used	599919	Depositor
Resolution determination method	FSC 0.143 CUT-OFF	Depositor
CTF correction method	PHASE FLIPPING AND AMPLITUDE CORRECTION	Depositor
Microscope	JEOL CRYO ARM 300	Depositor
Voltage (kV)	300	Depositor
Electron dose ($e^-/\text{\AA}^2$)	60	Depositor
Minimum defocus (nm)	800	Depositor
Maximum defocus (nm)	1800	Depositor
Magnification	Not provided	
Image detector	GATAN K3 BIOQUANTUM (6k x 4k)	Depositor
Maximum map value	5.584	Depositor
Minimum map value	-3.252	Depositor
Average map value	-0.004	Depositor
Map value standard deviation	0.082	Depositor
Recommended contour level	0.53	Depositor
Map size (Å)	338.4, 338.4, 338.4	wwPDB
Map dimensions	450, 450, 450	wwPDB
Map angles (°)	90.0, 90.0, 90.0	wwPDB
Pixel spacing (Å)	0.752, 0.752, 0.752	Depositor

5 Model quality

5.1 Standard geometry

Bond lengths and bond angles in the following residue types are not validated in this section: PCW, MG, UOU, NAG, CLR, BFD

The Z score for a bond length (or angle) is the number of standard deviations the observed value is removed from the expected value. A bond length (or angle) with $|Z| > 5$ is considered an outlier worth inspection. RMSZ is the root-mean-square of all Z scores of the bond lengths (or angles).

Mol	Chain	Bond lengths		Bond angles	
		RMSZ	# Z >5	RMSZ	# Z >5
1	A	0.26	0/7778	0.48	0/10566
2	B	0.28	0/2210	0.49	0/3008
All	All	0.27	0/9988	0.48	0/13574

There are no bond length outliers.

There are no bond angle outliers.

There are no chirality outliers.

There are no planarity outliers.

5.2 Too-close contacts

In the following table, the Non-H and H(model) columns list the number of non-hydrogen atoms and hydrogen atoms in the chain respectively. The H(added) column lists the number of hydrogen atoms added and optimized by MolProbity. The Clashes column lists the number of clashes within the asymmetric unit, whereas Symm-Clashes lists symmetry-related clashes.

Mol	Chain	Non-H	H(model)	H(added)	Clashes	Symm-Clashes
1	A	7633	0	7656	74	0
2	B	2142	0	2081	27	0
3	A	192	0	278	18	0
3	B	54	0	84	2	0
4	A	1	0	0	0	0
5	A	26	0	0	0	0
6	B	42	0	39	0	0
7	B	28	0	46	3	0
8	A	260	0	0	4	0
8	B	113	0	0	0	0
All	All	10491	0	10184	110	0

The all-atom clashscore is defined as the number of clashes found per 1000 atoms (including hydrogen atoms). The all-atom clashscore for this structure is 5.

All (110) close contacts within the same asymmetric unit are listed below, sorted by their clash magnitude.

Atom-1	Atom-2	Interatomic distance (Å)	Clash overlap (Å)
2:B:135:LYS:HD2	2:B:136:TYR:H	1.46	0.78
2:B:207:PRO:HB3	2:B:256:ARG:HH12	1.51	0.76
1:A:383:CYS:SG	8:A:1453:HOH:O	2.44	0.75
2:B:87:ASP:OD1	2:B:87:ASP:N	2.20	0.75
2:B:78:LYS:HE2	2:B:78:LYS:H	1.53	0.73
2:B:149:LYS:HG3	2:B:236:ALA:HB1	1.73	0.71
2:B:145:PRO:O	2:B:148:THR:OG1	2.14	0.65
1:A:201:GLU:HG2	1:A:264:GLN:HG3	1.79	0.65
2:B:135:LYS:HD2	2:B:136:TYR:N	2.12	0.64
1:A:946:ARG:NH1	1:A:1033:TYR:OH	2.30	0.64
1:A:877:ASP:OD2	8:A:1201:HOH:O	2.14	0.64
1:A:559:GLU:HG2	1:A:601:ILE:HB	1.82	0.62
1:A:213:ARG:NH1	1:A:214:ILE:O	2.33	0.61
1:A:419:THR:HG22	1:A:420:PHE:H	1.68	0.59
1:A:510:PRO:HG2	1:A:571:GLU:HG2	1.84	0.58
1:A:906:ASP:OD1	8:A:1202:HOH:O	2.17	0.58
1:A:95:THR:HG21	1:A:103:ARG:HH22	1.69	0.58
1:A:182:ARG:NH2	1:A:198:ASP:OD2	2.36	0.57
1:A:983:GLY:H	3:A:1104:PCW:H83	1.68	0.57
1:A:288:ASN:ND2	8:A:1203:HOH:O	2.39	0.55
1:A:724:THR:HG22	1:A:741:VAL:HB	1.89	0.54
1:A:401:TRP:HB3	1:A:597:LEU:HB2	1.89	0.54
2:B:125:GLN:HB3	2:B:153:LYS:HG3	1.89	0.54
1:A:391:THR:HA	1:A:604:PRO:HA	1.90	0.54
1:A:567:LEU:HB2	1:A:592:LEU:HD23	1.90	0.54
1:A:526:ARG:NH1	1:A:589:THR:OG1	2.41	0.53
1:A:741:VAL:HG11	1:A:767:ILE:HD11	1.89	0.53
1:A:667:LYS:HE3	1:A:693:THR:HG23	1.90	0.52
1:A:619:GLY:HA3	1:A:844:ARG:HE	1.74	0.52
1:A:158:TYR:CE1	1:A:162:LYS:HD3	2.44	0.52
3:A:1105:PCW:H211	3:A:1105:PCW:H431	1.91	0.51
1:A:526:ARG:NH1	1:A:589:THR:O	2.44	0.51
1:A:586:ASN:OD1	1:A:586:ASN:N	2.44	0.51
1:A:75:SER:O	1:A:79:GLU:HG2	2.12	0.50
1:A:61:GLU:HG3	1:A:67:SER:HA	1.93	0.50
1:A:617:THR:O	1:A:844:ARG:NH2	2.45	0.50
1:A:1018:GLY:HA3	3:A:1105:PCW:H362	1.94	0.49

Continued on next page...

Continued from previous page...

Atom-1	Atom-2	Interatomic distance (Å)	Clash overlap (Å)
2:B:39:TRP:CG	7:B:305:CLR:H191	2.48	0.49
1:A:275:ILE:HD12	1:A:278:ARG:HH21	1.78	0.48
1:A:87:ASN:HA	1:A:270:THR:HG23	1.96	0.48
1:A:499:LEU:HD11	1:A:514:LEU:HD21	1.94	0.48
2:B:29:MET:HG2	2:B:30:LEU:HD12	1.95	0.48
2:B:176:LYS:HG2	2:B:250:LEU:HA	1.95	0.48
3:A:1101:PCW:H211	3:A:1101:PCW:H182	1.65	0.47
1:A:199:LEU:HD11	1:A:264:GLN:HG2	1.97	0.47
3:A:1101:PCW:H171	3:A:1101:PCW:H141	1.85	0.46
1:A:524:LEU:HD22	1:A:547:PHE:CD1	2.51	0.46
2:B:43:TYR:HA	7:B:305:CLR:H211	1.98	0.46
1:A:529:SER:HA	1:A:538:PRO:HA	1.98	0.46
3:A:1104:PCW:H252	3:A:1104:PCW:H221	1.88	0.46
2:B:55:PHE:O	2:B:59:ILE:HG12	2.16	0.46
1:A:932:PHE:O	1:A:936:GLU:HG2	2.16	0.45
3:A:1105:PCW:H121	7:B:305:CLR:H122	1.97	0.45
1:A:61:GLU:OE2	1:A:68:ALA:N	2.38	0.45
2:B:61:VAL:O	2:B:65:THR:HG23	2.16	0.45
1:A:143:LEU:HD23	3:A:1101:PCW:H122	1.99	0.45
1:A:933:ILE:HG13	1:A:993:ILE:HD11	1.98	0.45
1:A:159:GLN:HG2	1:A:370:LEU:HG	1.97	0.45
1:A:675:ASN:OD1	1:A:678:GLN:HG3	2.17	0.45
1:A:495:ASN:HB3	1:A:497:PHE:CE2	2.52	0.45
1:A:559:GLU:OE1	1:A:599:SER:OG	2.31	0.45
1:A:782:LYS:HB2	1:A:782:LYS:HE2	1.73	0.44
2:B:181:ILE:HD13	2:B:199:VAL:HG11	1.99	0.44
2:B:68:PRO:HB3	3:B:301:PCW:H71	1.99	0.44
1:A:433:VAL:HG22	1:A:515:VAL:HG12	1.99	0.44
1:A:826:PHE:HB3	1:A:827:PRO:HD3	2.00	0.44
1:A:276:ILE:HG13	1:A:728:VAL:HG11	1.98	0.43
1:A:241:THR:HG21	1:A:249:ARG:HD2	2.00	0.43
3:A:1105:PCW:H63	3:A:1105:PCW:H42	1.71	0.43
1:A:414:ASP:OD1	1:A:414:ASP:N	2.47	0.43
1:A:519:ALA:O	1:A:523:VAL:HG23	2.19	0.43
1:A:542:GLN:O	1:A:545:GLU:HG3	2.16	0.43
1:A:332:PHE:CE1	1:A:803:ILE:HG13	2.54	0.43
1:A:988:PHE:HE1	3:A:1101:PCW:H11	1.83	0.43
3:A:1101:PCW:H41	3:A:1101:PCW:H63	1.73	0.43
2:B:33:THR:HG22	2:B:36:ARG:HG2	2.01	0.43
1:A:850:ARG:HB3	1:A:850:ARG:NH1	2.34	0.43
2:B:100:VAL:HG22	2:B:290:LYS:HA	2.01	0.43

Continued on next page...

Continued from previous page...

Atom-1	Atom-2	Interatomic distance (Å)	Clash overlap (Å)
1:A:235:THR:O	1:A:249:ARG:HG2	2.19	0.43
2:B:136:TYR:CE2	2:B:193:ASN:HB3	2.54	0.43
1:A:495:ASN:HB3	1:A:497:PHE:CD2	2.54	0.42
2:B:252:VAL:O	2:B:254:ARG:NH1	2.51	0.42
3:A:1103:PCW:H382	3:A:1103:PCW:H411	1.71	0.42
1:A:187:PHE:HE2	1:A:189:ILE:HD12	1.85	0.42
1:A:72:LEU:HD23	1:A:72:LEU:HA	1.90	0.42
1:A:662:ASP:OD1	1:A:662:ASP:N	2.45	0.42
3:A:1103:PCW:H52	2:B:75:ASP:HB3	2.00	0.42
1:A:942:ASP:O	1:A:946:ARG:HD3	2.19	0.42
3:A:1103:PCW:H272	3:A:1103:PCW:H242	1.88	0.42
1:A:315:PHE:HB3	1:A:332:PHE:CE2	2.55	0.42
1:A:497:PHE:HB2	1:A:516:MET:SD	2.59	0.42
2:B:103:SER:HA	2:B:106:TRP:CE2	2.55	0.41
1:A:977:PHE:CZ	3:A:1104:PCW:H212	2.55	0.41
3:A:1103:PCW:H62	2:B:75:ASP:HB3	2.02	0.41
1:A:865:GLN:OE1	1:A:1011:TYR:OH	2.22	0.41
1:A:221:LYS:HB2	1:A:260:GLU:HG2	2.01	0.41
1:A:605:ARG:HB2	1:A:608:VAL:HG23	2.02	0.41
1:A:60:LEU:C	1:A:62:GLN:H	2.24	0.41
1:A:152:THR:HG21	1:A:346:LEU:HG	2.03	0.41
1:A:866:ILE:O	1:A:870:GLN:HG3	2.21	0.41
2:B:256:ARG:HG3	2:B:257:ASP:N	2.36	0.41
1:A:489:ILE:HD11	1:A:587:PHE:CZ	2.55	0.41
2:B:272:ASP:OD1	2:B:272:ASP:N	2.54	0.41
1:A:940:ILE:HD13	3:A:1103:PCW:H262	2.03	0.41
1:A:156:GLY:O	1:A:160:GLU:HG3	2.21	0.40
1:A:1011:TYR:OH	2:B:43:TYR:OH	2.35	0.40
3:B:301:PCW:H20	3:B:301:PCW:H232	1.71	0.40
1:A:988:PHE:CE1	3:A:1101:PCW:H11	2.57	0.40
1:A:195:VAL:O	1:A:198:ASP:HB2	2.22	0.40
2:B:115:ARG:HA	2:B:115:ARG:NE	2.36	0.40

There are no symmetry-related clashes.

5.3 Torsion angles [i](#)

5.3.1 Protein backbone [i](#)

In the following table, the Percentiles column shows the percent Ramachandran outliers of the chain as a percentile score with respect to all PDB entries followed by that with respect to all EM

entries.

The Analysed column shows the number of residues for which the backbone conformation was analysed, and the total number of residues.

Mol	Chain	Analysed	Favoured	Allowed	Outliers	Percentiles	
1	A	980/1033 (95%)	955 (97%)	25 (3%)	0	100	100
2	B	266/290 (92%)	262 (98%)	4 (2%)	0	100	100
All	All	1246/1323 (94%)	1217 (98%)	29 (2%)	0	100	100

There are no Ramachandran outliers to report.

5.3.2 Protein sidechains [i](#)

In the following table, the Percentiles column shows the percent sidechain outliers of the chain as a percentile score with respect to all PDB entries followed by that with respect to all EM entries.

The Analysed column shows the number of residues for which the sidechain conformation was analysed, and the total number of residues.

Mol	Chain	Analysed	Rotameric	Outliers	Percentiles	
1	A	830/868 (96%)	789 (95%)	41 (5%)	25	27
2	B	234/254 (92%)	230 (98%)	4 (2%)	60	71
All	All	1064/1122 (95%)	1019 (96%)	45 (4%)	33	34

All (45) residues with a non-rotameric sidechain are listed below:

Mol	Chain	Res	Type
1	A	56	SER
1	A	69	THR
1	A	70	LYS
1	A	73	SER
1	A	90	ARG
1	A	93	ARG
1	A	95	THR
1	A	169	SER
1	A	186	LYS
1	A	196	VAL
1	A	198	ASP
1	A	235	THR
1	A	270	THR
1	A	273	ARG

Continued on next page...

Continued from previous page...

Mol	Chain	Res	Type
1	A	284	SER
1	A	288	ASN
1	A	300	PHE
1	A	328	ARG
1	A	354	SER
1	A	398	SER
1	A	437	CYS
1	A	446	GLN
1	A	447	ASP
1	A	461	SER
1	A	494	THR
1	A	508	ARG
1	A	516	MET
1	A	537	LEU
1	A	540	ASP
1	A	569	LEU
1	A	572	LYS
1	A	582	VAL
1	A	589	THR
1	A	662	ASP
1	A	735	LYS
1	A	815	THR
1	A	824	ASP
1	A	849	LYS
1	A	931	PHE
1	A	943	VAL
1	A	946	ARG
2	B	78	LYS
2	B	87	ASP
2	B	137	PHE
2	B	194	SER

Sometimes sidechains can be flipped to improve hydrogen bonding and reduce clashes. There are no such sidechains identified.

5.3.3 RNA ⓘ

There are no RNA molecules in this entry.

5.4 Non-standard residues in protein, DNA, RNA chains ⓘ

1 non-standard protein/DNA/RNA residue is modelled in this entry.

In the following table, the Counts columns list the number of bonds (or angles) for which Mogul statistics could be retrieved, the number of bonds (or angles) that are observed in the model and the number of bonds (or angles) that are defined in the Chemical Component Dictionary. The Link column lists molecule types, if any, to which the group is linked. The Z score for a bond length (or angle) is the number of standard deviations the observed value is removed from the expected value. A bond length (or angle) with $|Z| > 2$ is considered an outlier worth inspection. RMSZ is the root-mean-square of all Z scores of the bond lengths (or angles).

Mol	Type	Chain	Res	Link	Bond lengths			Bond angles		
					Counts	RMSZ	# Z > 2	Counts	RMSZ	# Z > 2
1	BFD	A	385	4,1	8,11,12	5.54	3 (37%)	3,15,17	1.20	0

In the following table, the Chirals column lists the number of chiral outliers, the number of chiral centers analysed, the number of these observed in the model and the number defined in the Chemical Component Dictionary. Similar counts are reported in the Torsion and Rings columns. '-' means no outliers of that kind were identified.

Mol	Type	Chain	Res	Link	Chirals	Torsions	Rings
1	BFD	A	385	4,1	-	2/5/11/13	-

All (3) bond length outliers are listed below:

Mol	Chain	Res	Type	Atoms	Z	Observed(Å)	Ideal(Å)
1	A	385	BFD	F3-BE	9.34	1.76	1.54
1	A	385	BFD	F2-BE	8.83	1.75	1.54
1	A	385	BFD	F1-BE	8.76	1.75	1.54

There are no bond angle outliers.

There are no chirality outliers.

All (2) torsion outliers are listed below:

Mol	Chain	Res	Type	Atoms
1	A	385	BFD	CA-CB-CG-OD2
1	A	385	BFD	CA-CB-CG-OD1

There are no ring outliers.

No monomer is involved in short contacts.

5.5 Carbohydrates [i](#)

There are no monosaccharides in this entry.

5.6 Ligand geometry

Of 11 ligands modelled in this entry, 1 is monoatomic - leaving 10 for Mogul analysis.

In the following table, the Counts columns list the number of bonds (or angles) for which Mogul statistics could be retrieved, the number of bonds (or angles) that are observed in the model and the number of bonds (or angles) that are defined in the Chemical Component Dictionary. The Link column lists molecule types, if any, to which the group is linked. The Z score for a bond length (or angle) is the number of standard deviations the observed value is removed from the expected value. A bond length (or angle) with $|Z| > 2$ is considered an outlier worth inspection. RMSZ is the root-mean-square of all Z scores of the bond lengths (or angles).

Mol	Type	Chain	Res	Link	Bond lengths			Bond angles		
					Counts	RMSZ	# Z > 2	Counts	RMSZ	# Z > 2
6	NAG	B	302	2	14,14,15	0.29	0	17,19,21	0.53	0
6	NAG	B	303	2	14,14,15	0.45	0	17,19,21	0.71	0
6	NAG	B	304	2	14,14,15	0.28	0	17,19,21	0.62	0
3	PCW	A	1103	-	53,53,53	0.94	2 (3%)	59,61,61	0.98	3 (5%)
5	UOU	A	1106	-	28,28,28	0.41	1 (3%)	35,36,36	0.25	0
3	PCW	A	1105	-	48,48,53	1.00	2 (4%)	54,56,61	0.92	2 (3%)
3	PCW	A	1104	-	49,49,53	0.96	2 (4%)	55,57,61	2.23	9 (16%)
3	PCW	B	301	-	53,53,53	0.92	2 (3%)	59,61,61	0.93	3 (5%)
3	PCW	A	1101	-	38,38,53	1.09	2 (5%)	43,46,61	1.05	2 (4%)
7	CLR	B	305	-	31,31,31	0.70	0	48,48,48	1.27	8 (16%)

In the following table, the Chirals column lists the number of chiral outliers, the number of chiral centers analysed, the number of these observed in the model and the number defined in the Chemical Component Dictionary. Similar counts are reported in the Torsion and Rings columns. '-' means no outliers of that kind were identified.

Mol	Type	Chain	Res	Link	Chirals	Torsions	Rings
6	NAG	B	302	2	-	1/6/23/26	0/1/1/1
6	NAG	B	303	2	-	4/6/23/26	0/1/1/1
6	NAG	B	304	2	-	2/6/23/26	0/1/1/1
3	PCW	A	1103	-	-	20/57/57/57	-
5	UOU	A	1106	-	-	1/12/13/13	0/3/3/3
3	PCW	A	1105	-	-	13/52/52/57	-
3	PCW	A	1104	-	-	16/53/53/57	-
3	PCW	B	301	-	-	10/57/57/57	-
3	PCW	A	1101	-	-	8/42/42/57	-
7	CLR	B	305	-	-	6/10/68/68	0/4/4/4

All (11) bond length outliers are listed below:

Mol	Chain	Res	Type	Atoms	Z	Observed(Å)	Ideal(Å)
3	A	1105	PCW	O2-C31	4.33	1.46	1.34
3	A	1103	PCW	O3-C11	4.33	1.46	1.33
3	A	1105	PCW	O3-C11	4.30	1.45	1.33
3	A	1104	PCW	O3-C11	4.26	1.45	1.33
3	B	301	PCW	O3-C11	4.20	1.45	1.33
3	A	1101	PCW	O2-C31	4.17	1.46	1.34
3	A	1101	PCW	O3-C11	4.17	1.45	1.33
3	A	1103	PCW	O2-C31	4.13	1.45	1.34
3	A	1104	PCW	O2-C31	4.11	1.45	1.34
3	B	301	PCW	O2-C31	4.05	1.45	1.34
5	A	1106	UOU	C21-N01	2.08	1.49	1.46

All (27) bond angle outliers are listed below:

Mol	Chain	Res	Type	Atoms	Z	Observed(°)	Ideal(°)
3	A	1104	PCW	C8-N-C6	-8.90	86.09	108.97
3	A	1104	PCW	C8-N-C7	-8.59	86.90	108.97
3	A	1104	PCW	C8-N-C5	-5.77	86.29	109.92
3	A	1104	PCW	O2-C31-C32	4.19	120.54	111.50
3	A	1104	PCW	C7-N-C6	4.16	119.68	108.97
3	A	1101	PCW	O2-C31-C32	4.07	120.27	111.50
3	A	1103	PCW	O2-C31-C32	3.78	119.65	111.50
3	B	301	PCW	O2-C31-C32	3.72	119.52	111.50
3	A	1105	PCW	O2-C31-C32	3.59	119.24	111.50
7	B	305	CLR	C8-C7-C6	-3.49	107.72	112.73
3	A	1103	PCW	O3-C11-C12	2.78	120.63	111.91
3	A	1105	PCW	O3-C11-C12	2.59	120.02	111.91
3	A	1103	PCW	C2-O2-C31	-2.54	111.53	117.79
3	A	1104	PCW	O3-C11-C12	2.54	119.89	111.91
7	B	305	CLR	C9-C10-C5	2.51	113.59	109.65
3	A	1104	PCW	C2-O2-C31	-2.48	111.67	117.79
3	A	1104	PCW	C6-N-C5	2.46	119.97	109.92
7	B	305	CLR	C1-C10-C5	-2.41	104.34	108.75
7	B	305	CLR	C13-C14-C8	-2.38	110.86	114.38
3	B	301	PCW	O3-C11-C12	2.36	119.32	111.91
3	A	1104	PCW	C7-N-C5	2.27	119.20	109.92
7	B	305	CLR	C13-C17-C20	-2.22	116.01	119.49
3	A	1101	PCW	O3-C11-C12	2.16	118.69	111.91
7	B	305	CLR	C17-C13-C14	2.08	102.54	100.07
3	B	301	PCW	C2-O2-C31	-2.07	112.69	117.79
7	B	305	CLR	C3-C4-C5	-2.01	108.61	112.03
7	B	305	CLR	C1-C10-C9	2.01	111.53	108.73

There are no chirality outliers.

All (81) torsion outliers are listed below:

Mol	Chain	Res	Type	Atoms
3	A	1103	PCW	C12-C11-O3-C3
3	A	1103	PCW	O11-C11-O3-C3
3	A	1103	PCW	C1-O3P-P-O2P
3	A	1103	PCW	C4-O4P-P-O1P
3	A	1103	PCW	C4-O4P-P-O2P
3	A	1103	PCW	C4-O4P-P-O3P
3	A	1104	PCW	O4P-C4-C5-N
3	A	1105	PCW	O4P-C4-C5-N
3	A	1105	PCW	C1-O3P-P-O1P
3	B	301	PCW	C4-O4P-P-O3P
6	B	303	NAG	C8-C7-N2-C2
6	B	303	NAG	O7-C7-N2-C2
6	B	304	NAG	C8-C7-N2-C2
6	B	304	NAG	O7-C7-N2-C2
6	B	303	NAG	C1-C2-N2-C7
7	B	305	CLR	C17-C20-C22-C23
7	B	305	CLR	C21-C20-C22-C23
3	A	1105	PCW	C31-C32-C33-C34
3	B	301	PCW	C11-C12-C13-C14
3	A	1103	PCW	C1-O3P-P-O4P
3	A	1105	PCW	C1-O3P-P-O4P
3	A	1104	PCW	C34-C35-C36-C37
3	A	1105	PCW	C35-C36-C37-C38
3	A	1101	PCW	C13-C14-C15-C16
3	A	1104	PCW	C4-C5-N-C7
3	A	1104	PCW	C4-C5-N-C8
3	A	1104	PCW	C12-C13-C14-C15
3	B	301	PCW	C15-C16-C17-C18
3	A	1103	PCW	C42-C43-C44-C45
3	A	1104	PCW	C16-C17-C18-C19
3	A	1103	PCW	C16-C17-C18-C19
3	A	1105	PCW	O31-C31-O2-C2
3	A	1101	PCW	C11-C12-C13-C14
3	A	1101	PCW	C14-C15-C16-C17
3	A	1104	PCW	C22-C23-C24-C25
3	A	1103	PCW	C32-C31-O2-C2
3	A	1105	PCW	C32-C31-O2-C2
3	A	1103	PCW	O31-C31-O2-C2
3	B	301	PCW	C12-C13-C14-C15
3	A	1104	PCW	C21-C22-C23-C24

Continued on next page...

Continued from previous page...

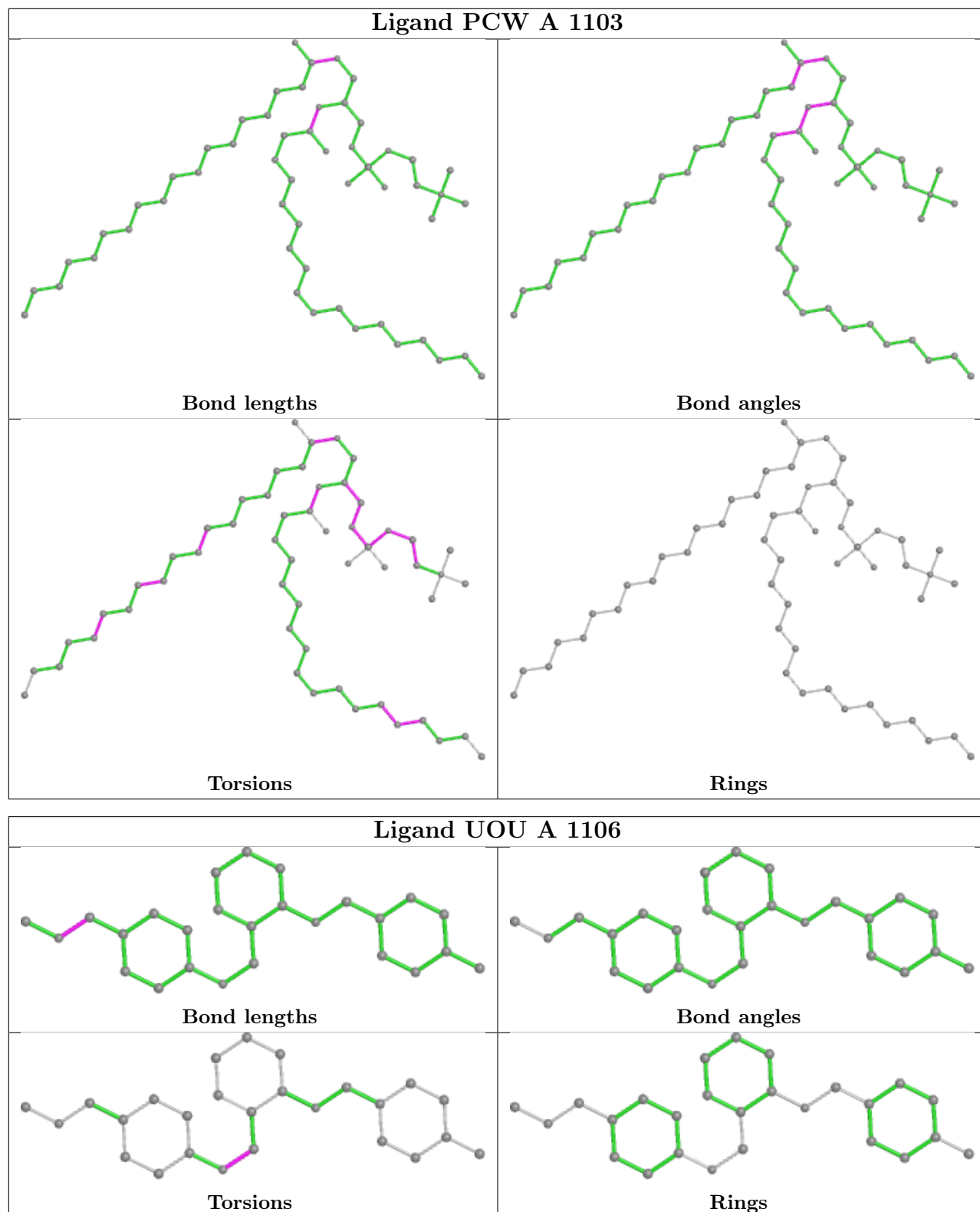
Mol	Chain	Res	Type	Atoms
3	A	1104	PCW	C36-C37-C38-C39
5	A	1106	UOU	C13-C14-O02-C15
3	A	1103	PCW	O3P-C1-C2-C3
3	B	301	PCW	C32-C33-C34-C35
3	A	1104	PCW	C4-O4P-P-O3P
3	A	1101	PCW	O3P-C1-C2-O2
3	A	1105	PCW	O3P-C1-C2-O2
3	A	1104	PCW	C24-C25-C26-C27
7	B	305	CLR	C23-C24-C25-C27
3	A	1105	PCW	C3-C2-O2-C31
3	A	1103	PCW	O3P-C1-C2-O2
7	B	305	CLR	C23-C24-C25-C26
3	A	1103	PCW	C1-O3P-P-O1P
3	B	301	PCW	C4-O4P-P-O1P
3	A	1101	PCW	O3P-C1-C2-C3
3	A	1103	PCW	O4P-C4-C5-N
3	B	301	PCW	O4P-C4-C5-N
7	B	305	CLR	C22-C23-C24-C25
3	A	1103	PCW	C2-C1-O3P-P
3	A	1103	PCW	C22-C23-C24-C25
3	A	1101	PCW	C1-O3P-P-O4P
3	A	1101	PCW	C4-O4P-P-O3P
3	A	1104	PCW	C1-O3P-P-O4P
3	A	1105	PCW	C4-O4P-P-O3P
3	B	301	PCW	C1-O3P-P-O4P
6	B	303	NAG	C3-C2-N2-C7
3	A	1104	PCW	C13-C14-C15-C16
3	A	1104	PCW	C11-C12-C13-C14
3	A	1105	PCW	C33-C34-C35-C36
3	A	1103	PCW	C43-C44-C45-C46
3	A	1105	PCW	C41-C42-C43-C44
3	A	1103	PCW	C19-C20-C21-C22
3	A	1104	PCW	C39-C40-C41-C42
6	B	302	NAG	C1-C2-N2-C7
3	B	301	PCW	C31-C32-C33-C34
3	A	1104	PCW	C19-C20-C21-C22
7	B	305	CLR	C13-C17-C20-C21
3	A	1101	PCW	C4-O4P-P-O2P
3	A	1105	PCW	C4-O4P-P-O2P
3	A	1103	PCW	C5-C4-O4P-P
3	B	301	PCW	O11-C11-O3-C3

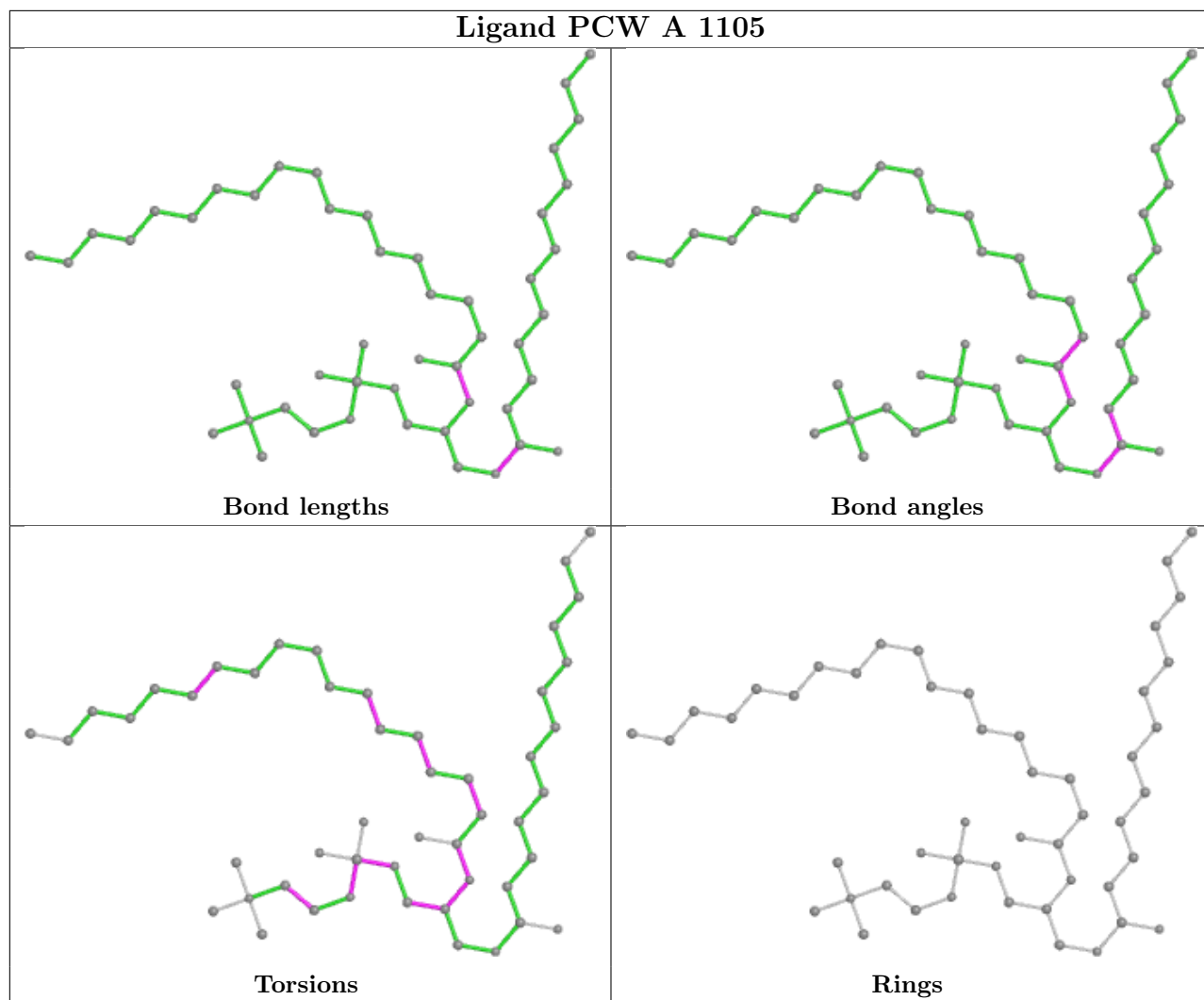
There are no ring outliers.

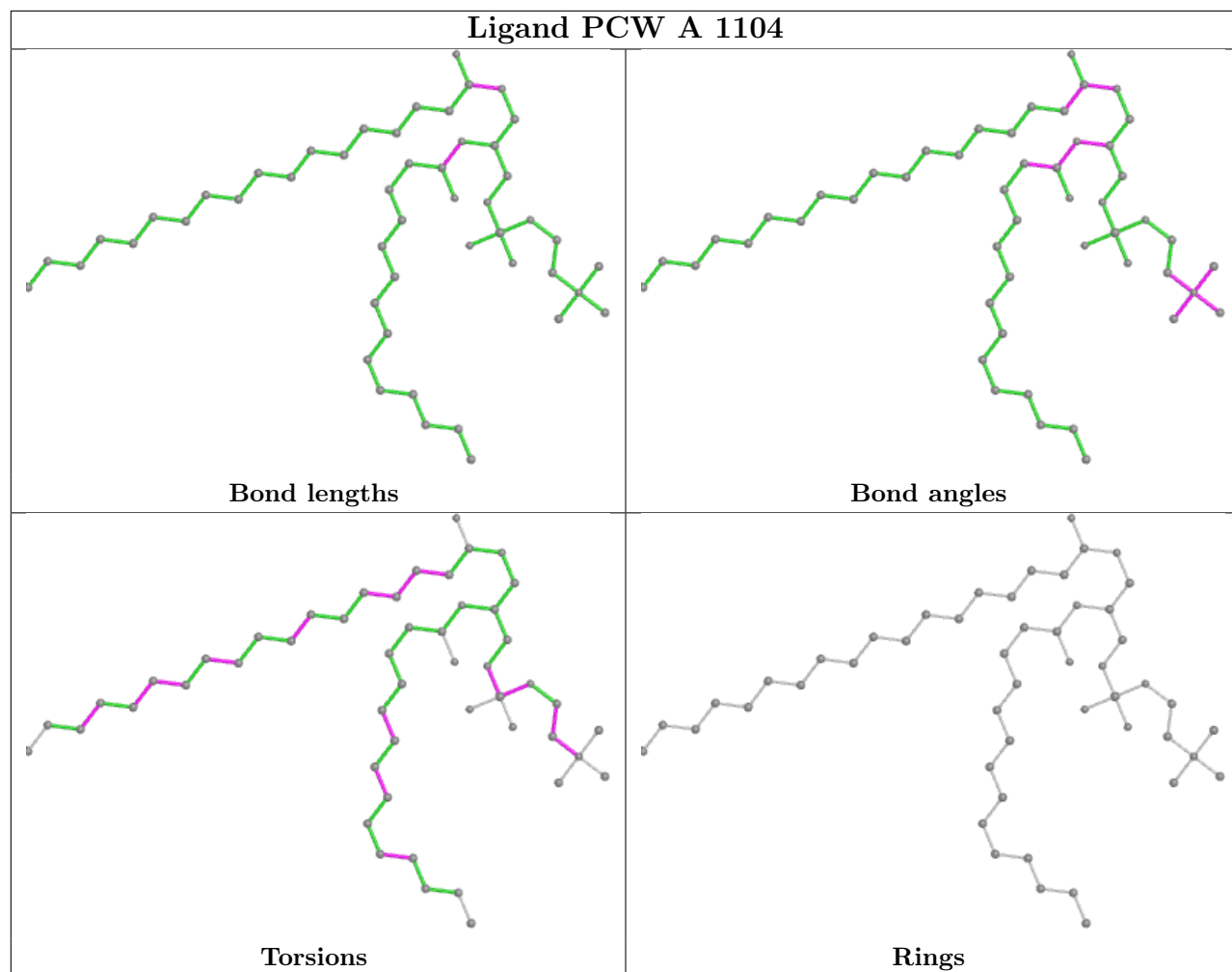
6 monomers are involved in 22 short contacts:

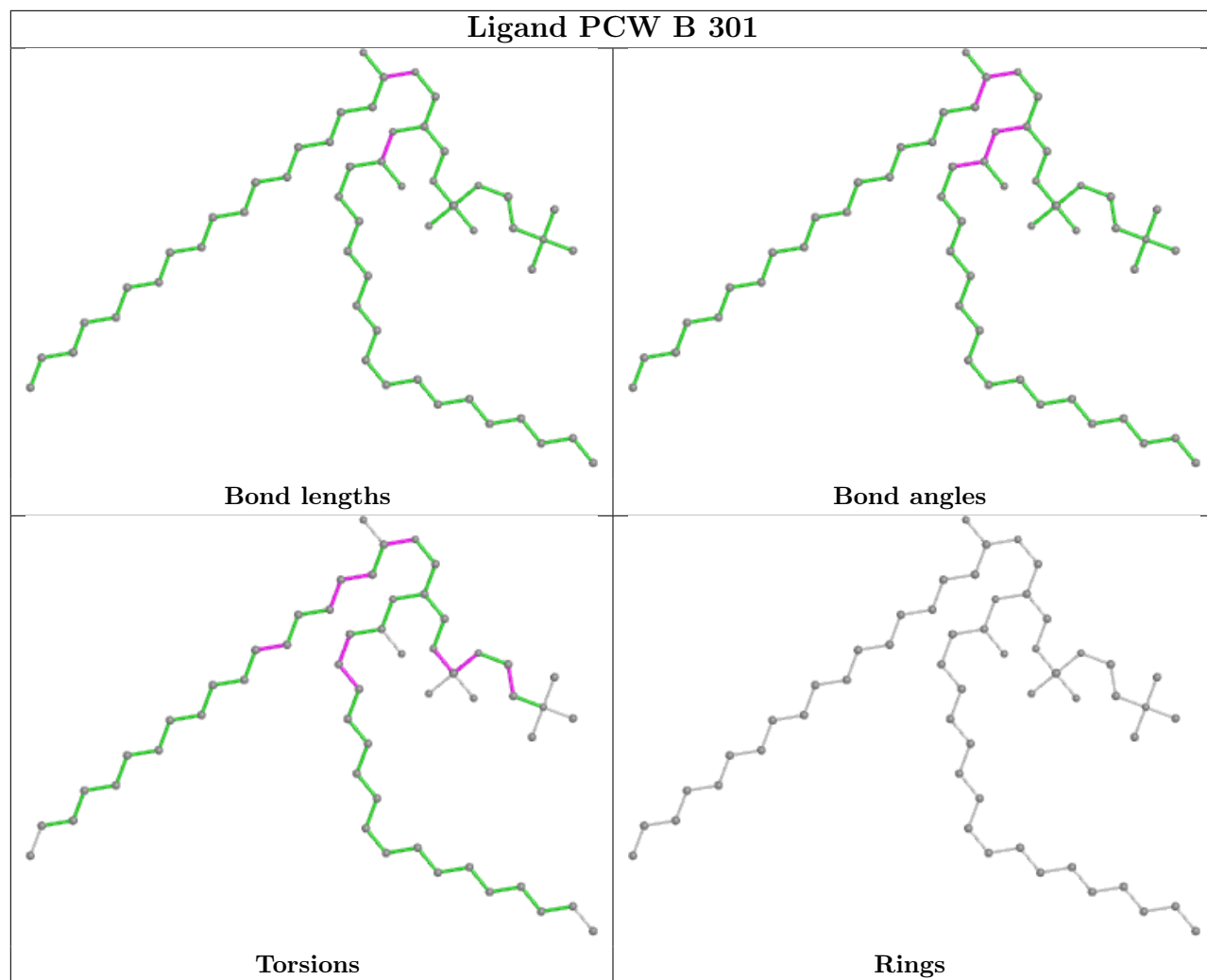
Mol	Chain	Res	Type	Clashes	Symm-Clashes
3	A	1103	PCW	5	0
3	A	1105	PCW	4	0
3	A	1104	PCW	3	0
3	B	301	PCW	2	0
3	A	1101	PCW	6	0
7	B	305	CLR	3	0

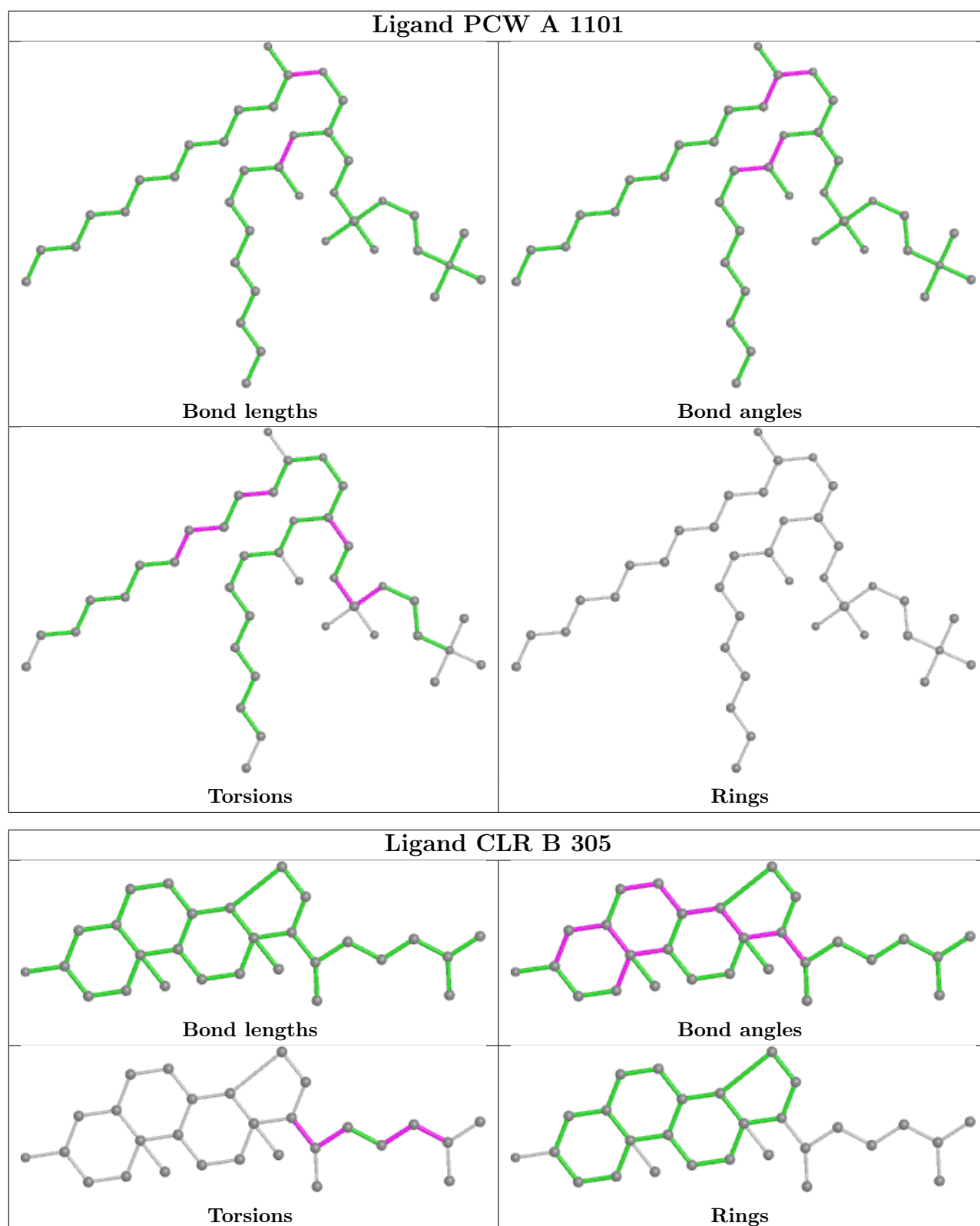
The following is a two-dimensional graphical depiction of Mogul quality analysis of bond lengths, bond angles, torsion angles, and ring geometry for all instances of the Ligand of Interest. In addition, ligands with molecular weight > 250 and outliers as shown on the validation Tables will also be included. For torsion angles, if less than 5% of the Mogul distribution of torsion angles is within 10 degrees of the torsion angle in question, then that torsion angle is considered an outlier. Any bond that is central to one or more torsion angles identified as an outlier by Mogul will be highlighted in the graph. For rings, the root-mean-square deviation (RMSD) between the ring in question and similar rings identified by Mogul is calculated over all ring torsion angles. If the average RMSD is greater than 60 degrees and the minimal RMSD between the ring in question and any Mogul-identified rings is also greater than 60 degrees, then that ring is considered an outlier. The outliers are highlighted in purple. The color gray indicates Mogul did not find sufficient equivalents in the CSD to analyse the geometry.











5.7 Other polymers [\(i\)](#)

There are no such residues in this entry.

5.8 Polymer linkage issues

There are no chain breaks in this entry.

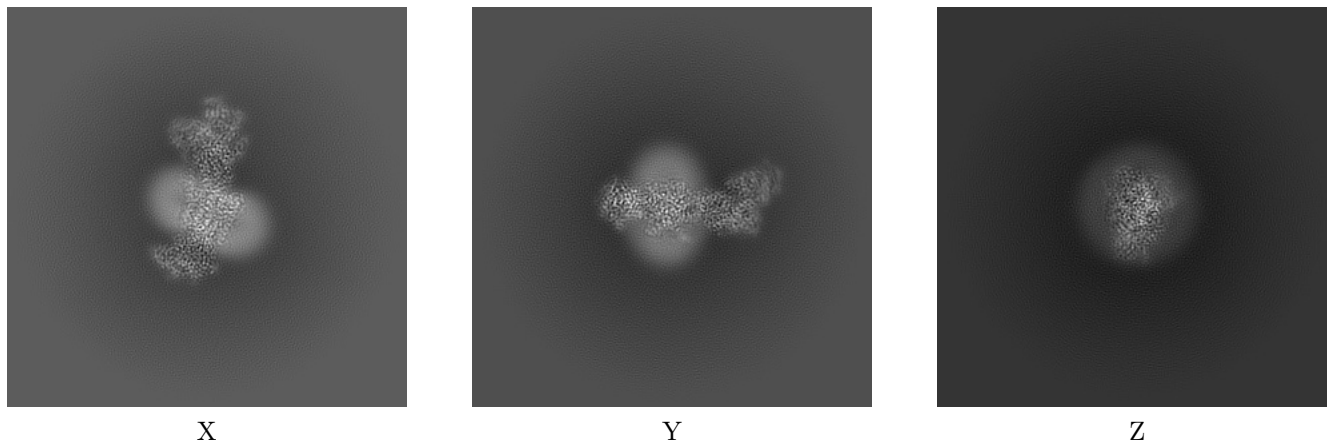
6 Map visualisation [i](#)

This section contains visualisations of the EMDB entry EMD-36424. These allow visual inspection of the internal detail of the map and identification of artifacts.

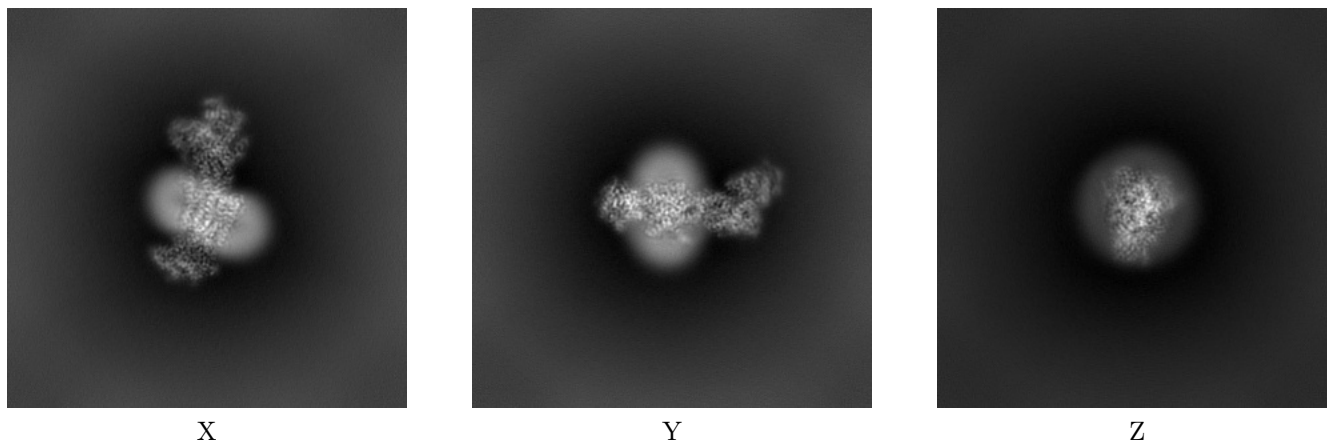
Images derived from a raw map, generated by summing the deposited half-maps, are presented below the corresponding image components of the primary map to allow further visual inspection and comparison with those of the primary map.

6.1 Orthogonal projections [i](#)

6.1.1 Primary map



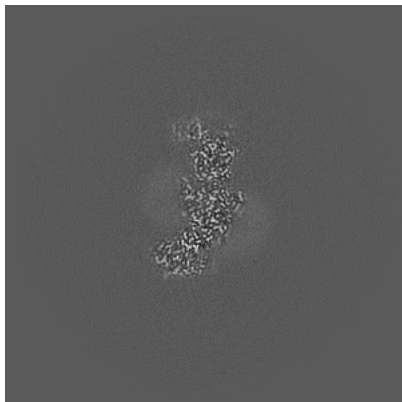
6.1.2 Raw map



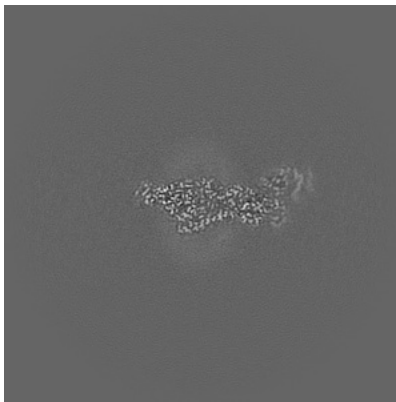
The images above show the map projected in three orthogonal directions.

6.2 Central slices [i](#)

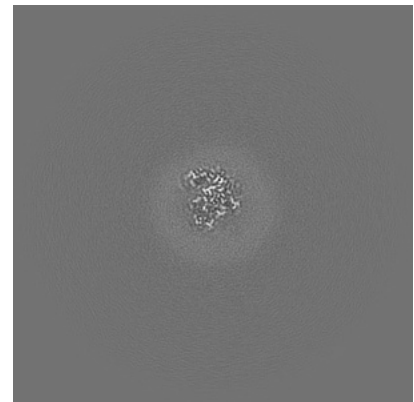
6.2.1 Primary map



X Index: 225

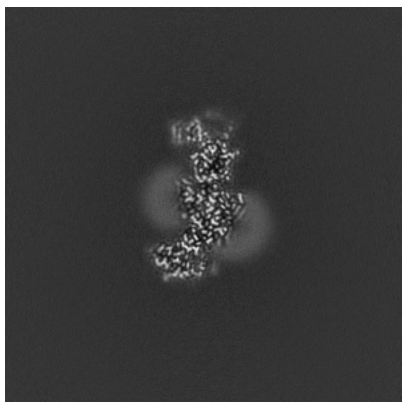


Y Index: 225

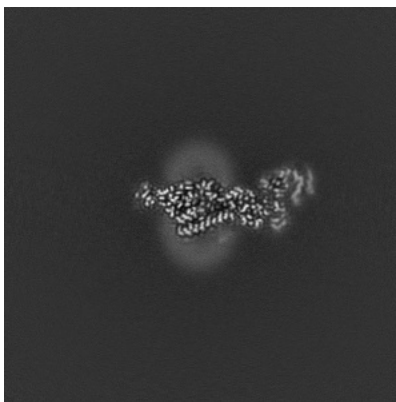


Z Index: 225

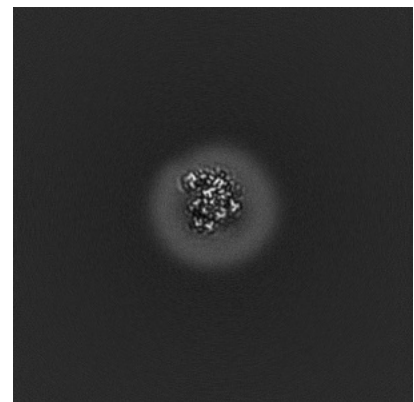
6.2.2 Raw map



X Index: 225



Y Index: 225

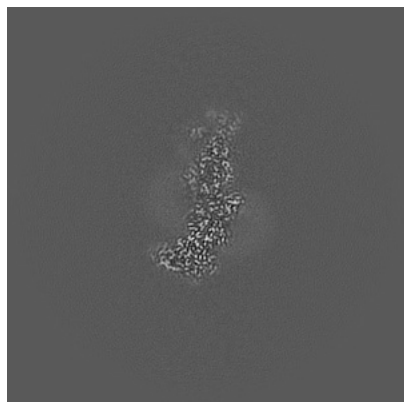


Z Index: 225

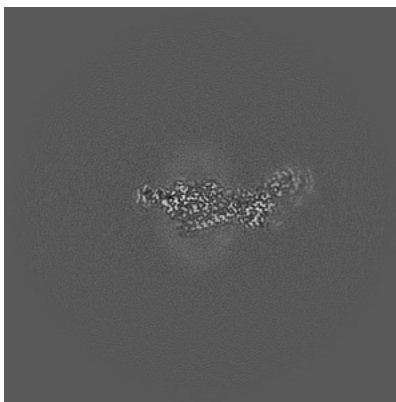
The images above show central slices of the map in three orthogonal directions.

6.3 Largest variance slices [i](#)

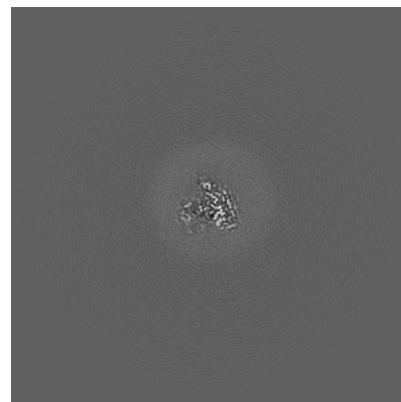
6.3.1 Primary map



X Index: 232

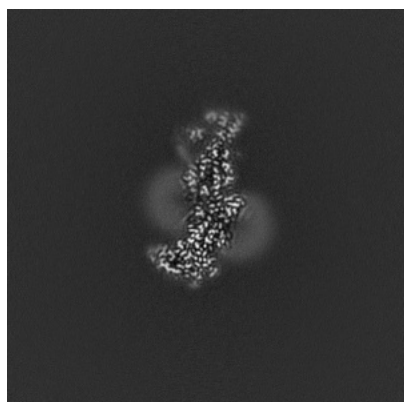


Y Index: 229

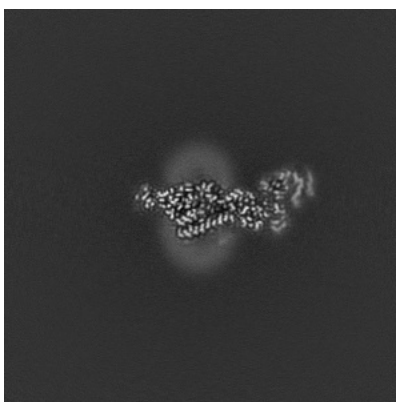


Z Index: 205

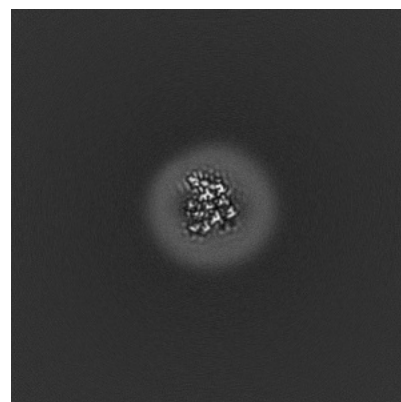
6.3.2 Raw map



X Index: 232



Y Index: 225

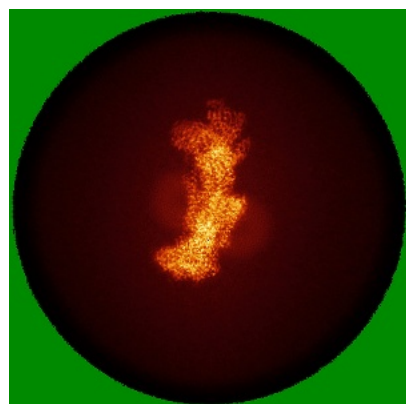


Z Index: 219

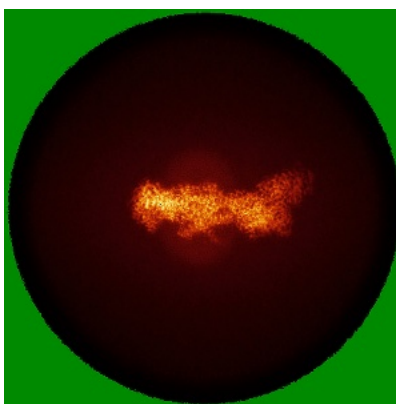
The images above show the largest variance slices of the map in three orthogonal directions.

6.4 Orthogonal standard-deviation projections (False-color) [i](#)

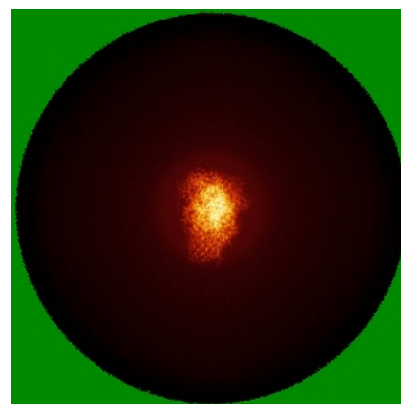
6.4.1 Primary map



X

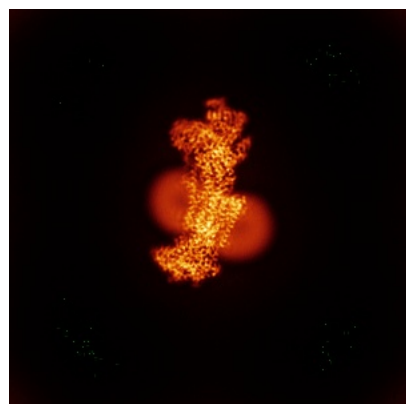


Y

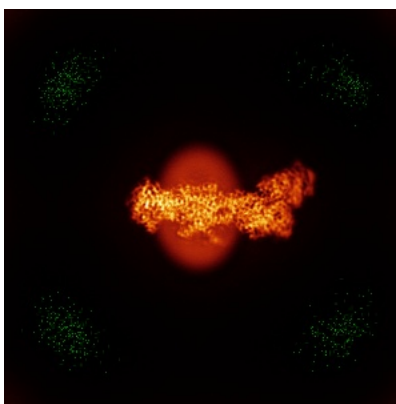


Z

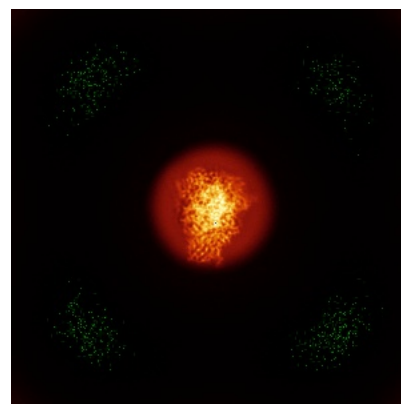
6.4.2 Raw map



X



Y

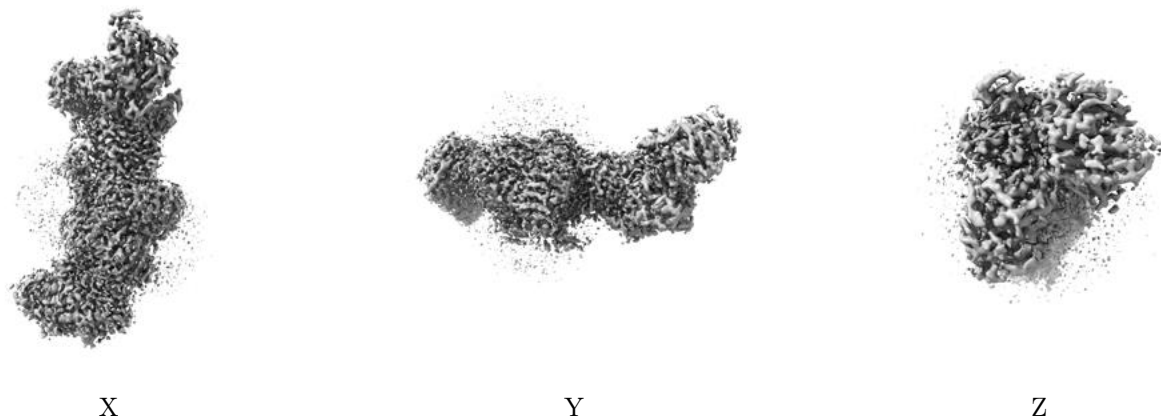


Z

The images above show the map standard deviation projections with false color in three orthogonal directions. Minimum values are shown in green, max in blue, and dark to light orange shades represent small to large values respectively.

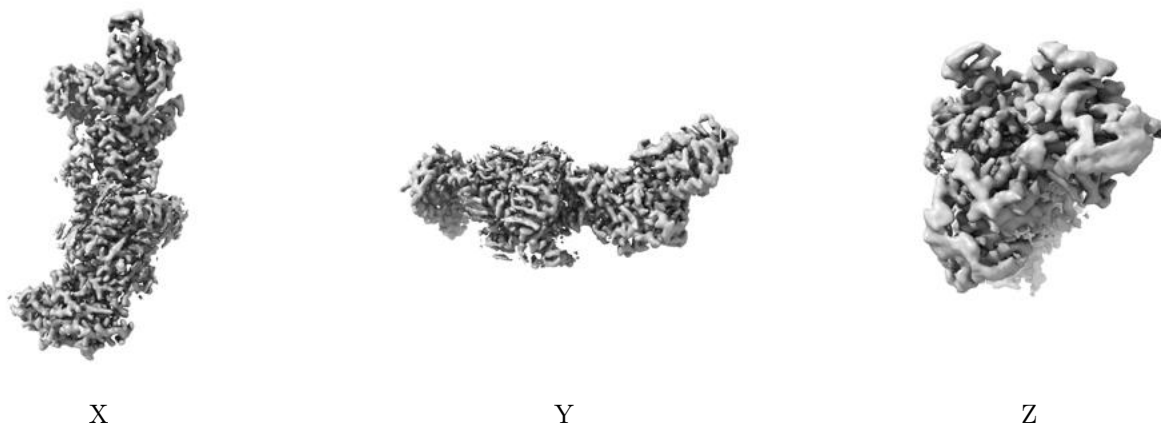
6.5 Orthogonal surface views [i](#)

6.5.1 Primary map



The images above show the 3D surface view of the map at the recommended contour level 0.53. These images, in conjunction with the slice images, may facilitate assessment of whether an appropriate contour level has been provided.

6.5.2 Raw map



These images show the 3D surface of the raw map. The raw map's contour level was selected so that its surface encloses the same volume as the primary map does at its recommended contour level.

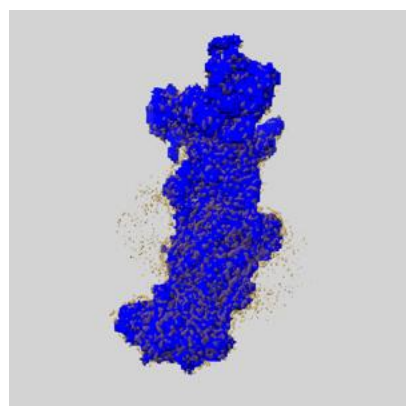
6.6 Mask visualisation [i](#)

This section shows the 3D surface view of the primary map at 50% transparency overlaid with the specified mask at 0% transparency

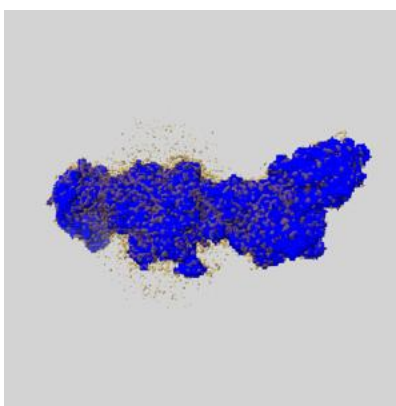
A mask typically either:

- Encompasses the whole structure
- Separates out a domain, a functional unit, a monomer or an area of interest from a larger structure

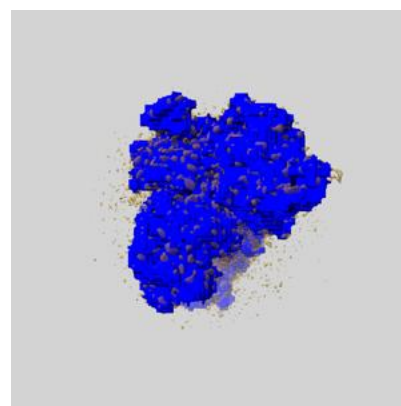
6.6.1 emd_36424_msk_1.map [i](#)



X



Y

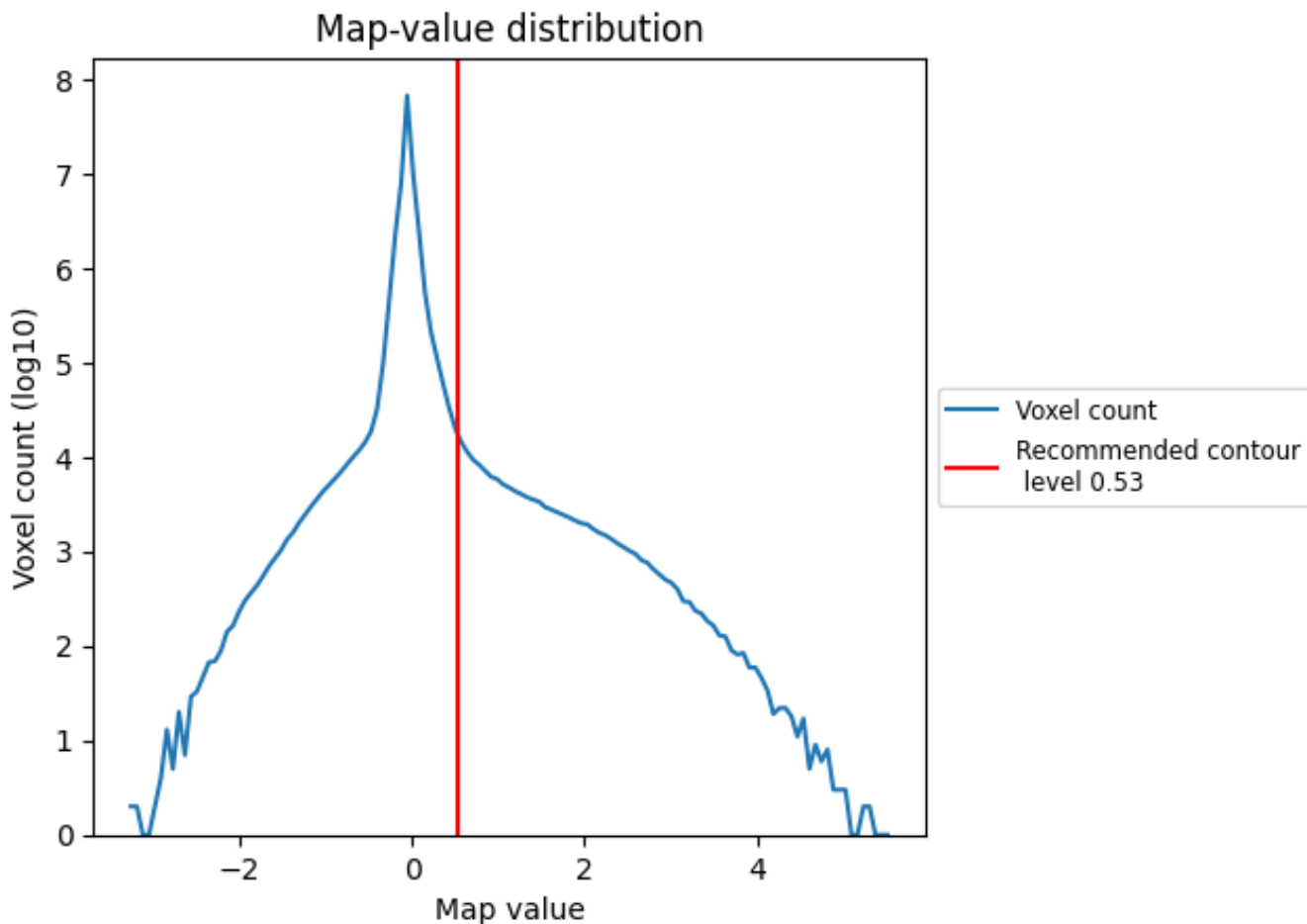


Z

7 Map analysis [i](#)

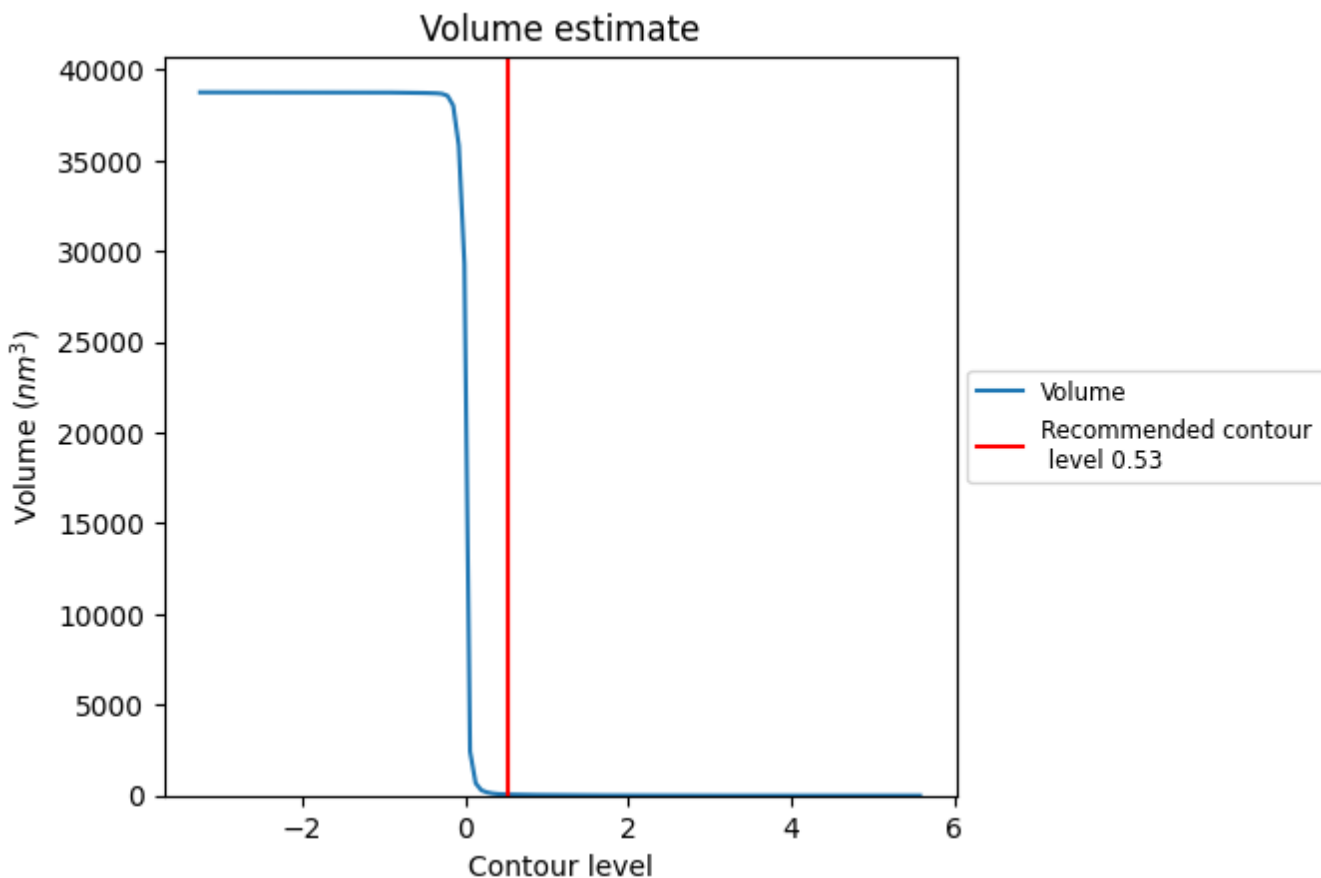
This section contains the results of statistical analysis of the map.

7.1 Map-value distribution [i](#)



The map-value distribution is plotted in 128 intervals along the x-axis. The y-axis is logarithmic. A spike in this graph at zero usually indicates that the volume has been masked.

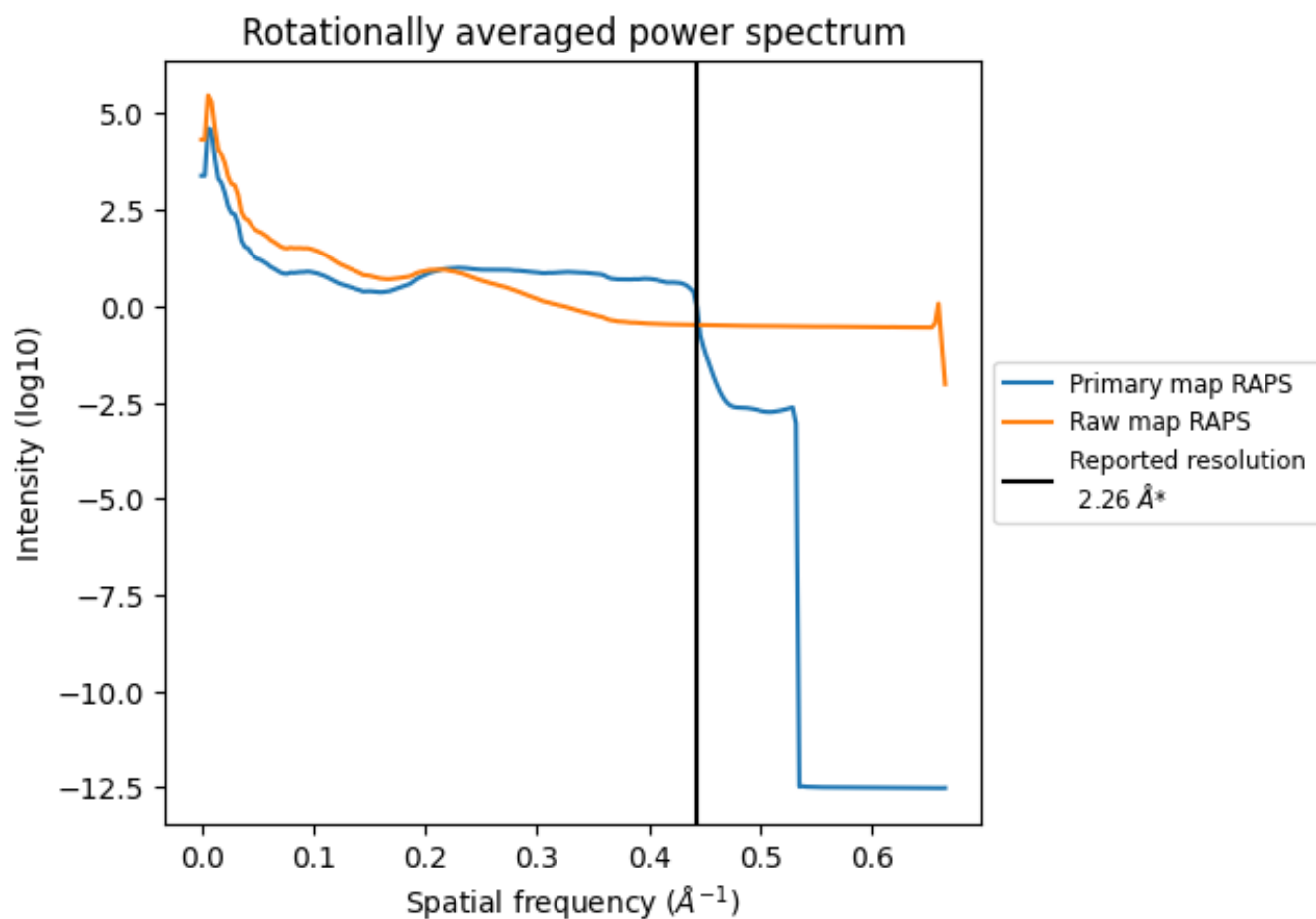
7.2 Volume estimate [i](#)



The volume at the recommended contour level is 60 nm³; this corresponds to an approximate mass of 54 kDa.

The volume estimate graph shows how the enclosed volume varies with the contour level. The recommended contour level is shown as a vertical line and the intersection between the line and the curve gives the volume of the enclosed surface at the given level.

7.3 Rotationally averaged power spectrum [i](#)

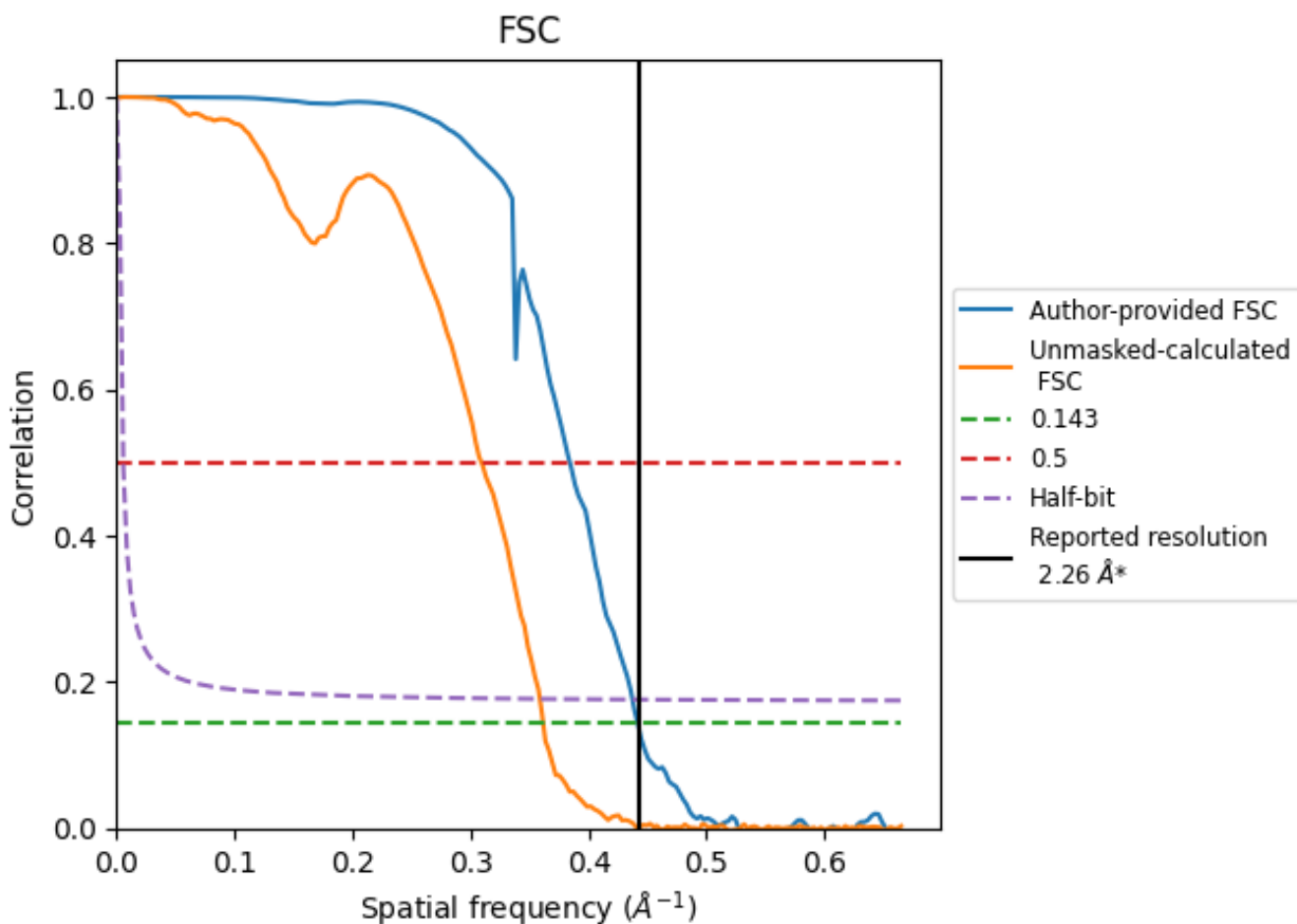


*Reported resolution corresponds to spatial frequency of 0.442 Å⁻¹

8 Fourier-Shell correlation [i](#)

Fourier-Shell Correlation (FSC) is the most commonly used method to estimate the resolution of single-particle and subtomogram-averaged maps. The shape of the curve depends on the imposed symmetry, mask and whether or not the two 3D reconstructions used were processed from a common reference. The reported resolution is shown as a black line. A curve is displayed for the half-bit criterion in addition to lines showing the 0.143 gold standard cut-off and 0.5 cut-off.

8.1 FSC [i](#)



*Reported resolution corresponds to spatial frequency of 0.442\AA^{-1}

8.2 Resolution estimates [i](#)

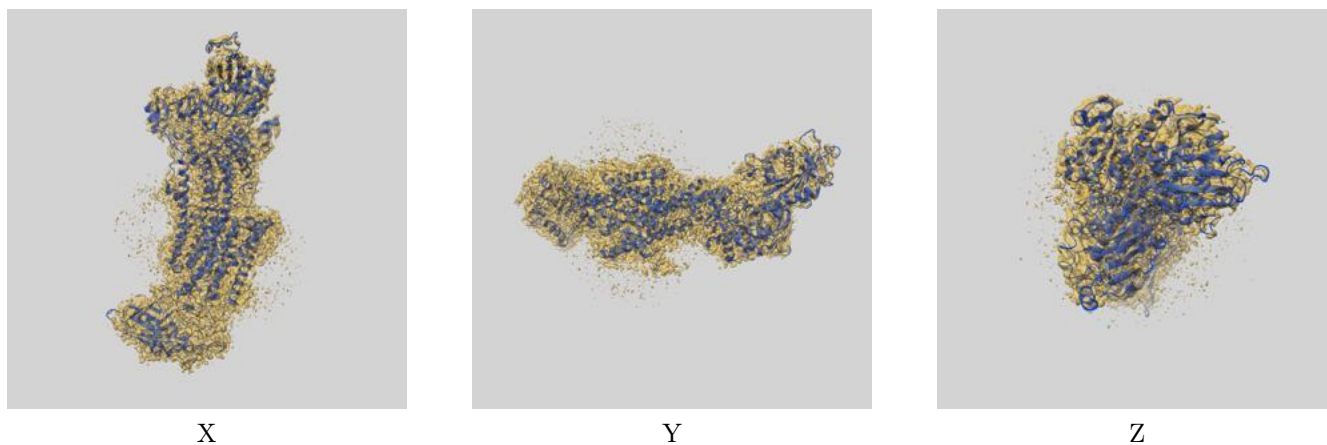
Resolution estimate (Å)	Estimation criterion (FSC cut-off)		
	0.143	0.5	Half-bit
Reported by author	2.26	-	-
Author-provided FSC curve	2.26	2.60	2.29
Unmasked-calculated*	2.77	3.23	2.79

*Resolution estimate based on FSC curve calculated by comparison of deposited half-maps. The value from deposited half-maps intersecting FSC 0.143 CUT-OFF 2.77 differs from the reported value 2.26 by more than 10 %

9 Map-model fit [i](#)

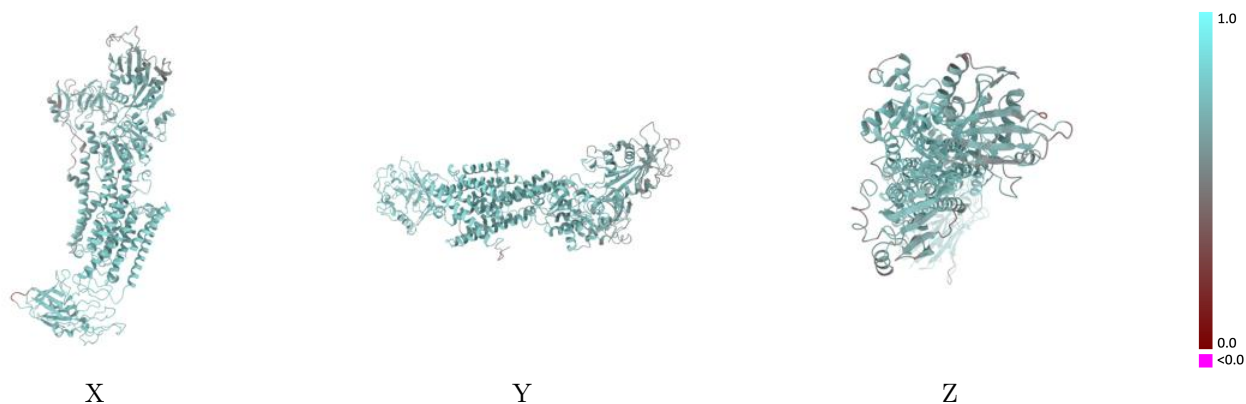
This section contains information regarding the fit between EMDB map EMD-36424 and PDB model 8JMN. Per-residue inclusion information can be found in section 3 on page 7.

9.1 Map-model overlay [i](#)



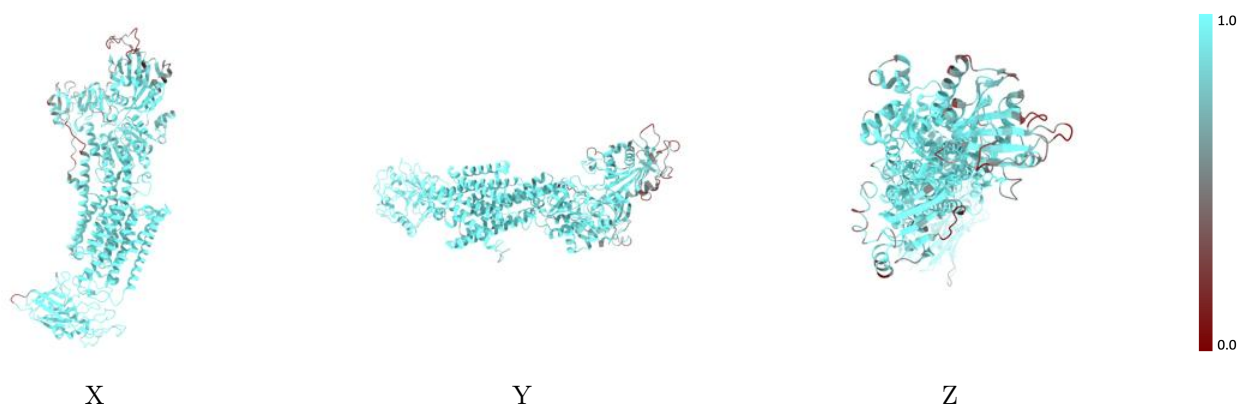
The images above show the 3D surface view of the map at the recommended contour level 0.53 at 50% transparency in yellow overlaid with a ribbon representation of the model coloured in blue. These images allow for the visual assessment of the quality of fit between the atomic model and the map.

9.2 Q-score mapped to coordinate model [\(i\)](#)



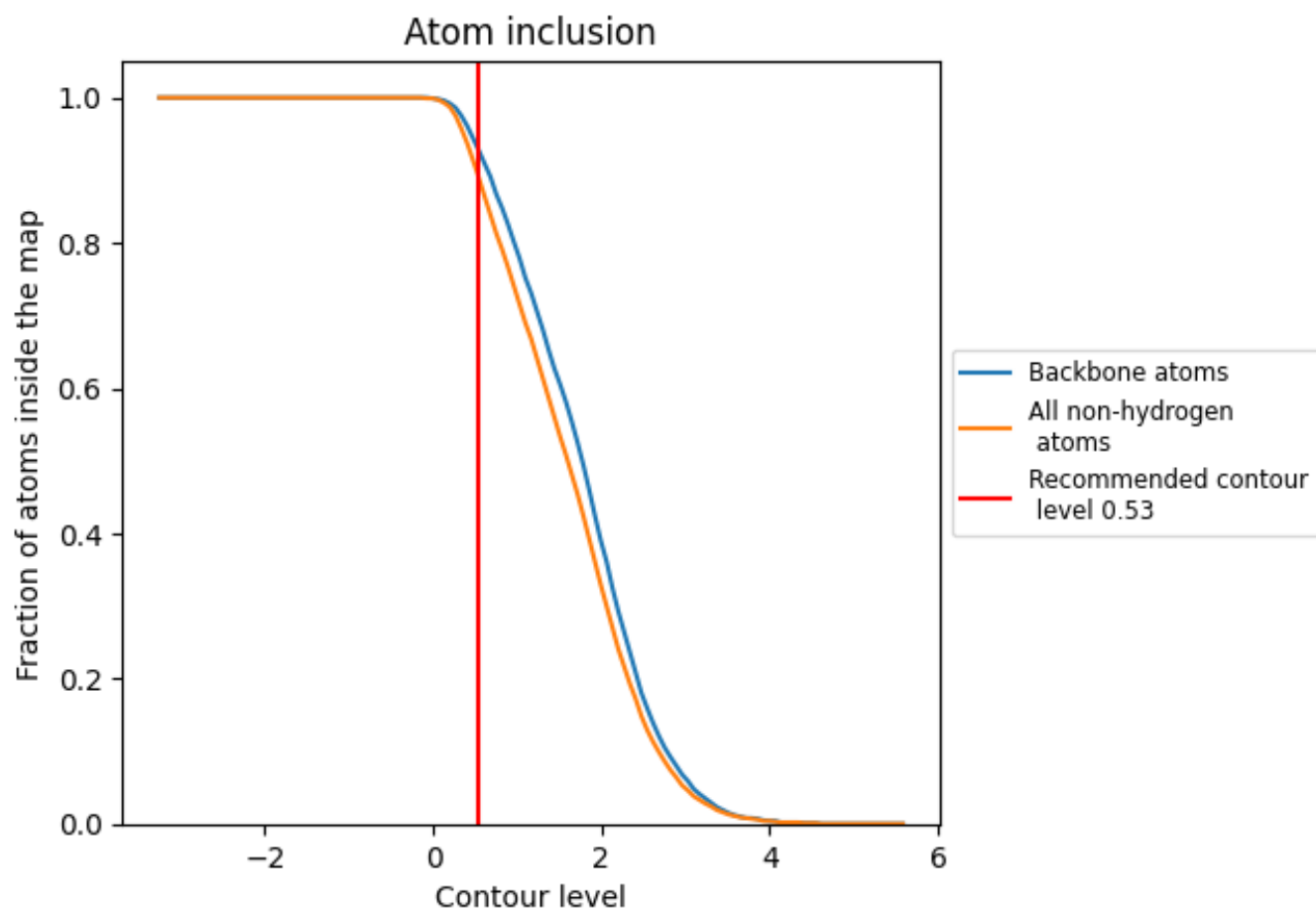
The images above show the model with each residue coloured according to its Q-score. This shows their resolvability in the map with higher Q-score values reflecting better resolvability. Please note: Q-score is calculating the resolvability of atoms, and thus high values are only expected at resolutions at which atoms can be resolved. Low Q-score values may therefore be expected for many entries.

9.3 Atom inclusion mapped to coordinate model [\(i\)](#)



The images above show the model with each residue coloured according to its atom inclusion. This shows to what extent they are inside the map at the recommended contour level (0.53).






9.4 Atom inclusion [i](#)



At the recommended contour level, 93% of all backbone atoms, 90% of all non-hydrogen atoms, are inside the map.

9.5 Map-model fit summary [i](#)

The table lists the average atom inclusion at the recommended contour level (0.53) and Q-score for the entire model and for each chain.

Chain	Atom inclusion	Q-score
All	 0.8950	 0.6700
A	 0.8850	 0.6690
B	 0.9280	 0.6730

