



Full wwPDB X-ray Structure Validation Report ⓘ

Feb 19, 2024 – 03:29 PM EST

PDB ID : 4JVG
Title : B-Raf Kinase in Complex with Birb796
Authors : Lavoie, H.; Thevakumaran, N.; Gavory, G.; Li, J.; Padeganeh, A.; Guiral, S.;
Duchaine, J.; Mao, D.Y.L.; Bouvier, M.; Sicheri, F.; Therrien, M.
Deposited on : 2013-03-25
Resolution : 3.09 Å(reported)

This is a Full wwPDB X-ray Structure Validation Report for a publicly released PDB entry.

We welcome your comments at validation@mail.wwpdb.org

A user guide is available at

<https://www.wwpdb.org/validation/2017/XrayValidationReportHelp>

with specific help available everywhere you see the ⓘ symbol.

The types of validation reports are described at

<http://www.wwpdb.org/validation/2017/FAQs#types>.

The following versions of software and data (see [references ⓘ](#)) were used in the production of this report:

MolProbity : 4.02b-467
Mogul : 1.8.5 (274361), CSD as541be (2020)
Xtriage (Phenix) : 1.13
EDS : 2.36
buster-report : 1.1.7 (2018)
Percentile statistics : 20191225.v01 (using entries in the PDB archive December 25th 2019)
Refmac : 5.8.0158
CCP4 : 7.0.044 (Gargrove)
Ideal geometry (proteins) : Engh & Huber (2001)
Ideal geometry (DNA, RNA) : Parkinson et al. (1996)
Validation Pipeline (wwPDB-VP) : 2.36

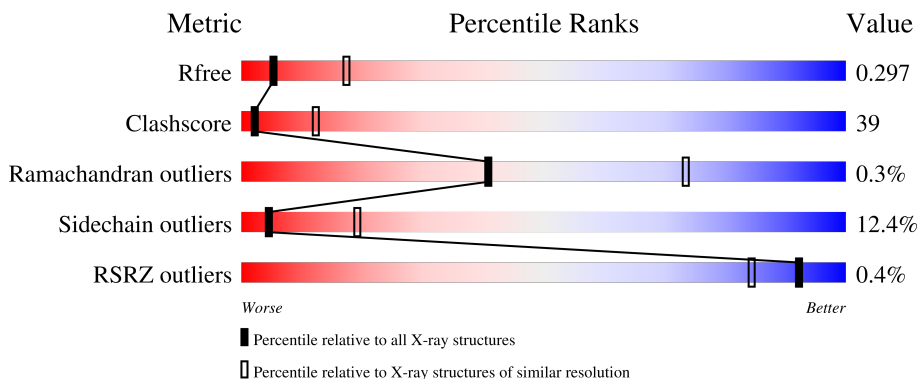
1 Overall quality at a glance

The following experimental techniques were used to determine the structure:

X-RAY DIFFRACTION

The reported resolution of this entry is 3.09 Å.

Percentile scores (ranging between 0-100) for global validation metrics of the entry are shown in the following graphic. The table shows the number of entries on which the scores are based.



Metric	Whole archive (#Entries)	Similar resolution (#Entries, resolution range(Å))
R_{free}	130704	1094 (3.10-3.10)
Clashscore	141614	1184 (3.10-3.10)
Ramachandran outliers	138981	1141 (3.10-3.10)
Sidechain outliers	138945	1141 (3.10-3.10)
RSRZ outliers	127900	1067 (3.10-3.10)

The table below summarises the geometric issues observed across the polymeric chains and their fit to the electron density. The red, orange, yellow and green segments of the lower bar indicate the fraction of residues that contain outliers for ≥ 3 , 2, 1 and 0 types of geometric quality criteria respectively. A grey segment represents the fraction of residues that are not modelled. The numeric value for each fraction is indicated below the corresponding segment, with a dot representing fractions $\leq 5\%$. The upper red bar (where present) indicates the fraction of residues that have poor fit to the electron density. The numeric value is given above the bar.

Mol	Chain	Length	Quality of chain
1	A	284	
1	B	284	
1	C	284	
1	D	284	

2 Entry composition [i](#)

There are 2 unique types of molecules in this entry. The entry contains 8481 atoms, of which 0 are hydrogens and 0 are deuteriums.

In the tables below, the ZeroOcc column contains the number of atoms modelled with zero occupancy, the AltConf column contains the number of residues with at least one atom in alternate conformation and the Trace column contains the number of residues modelled with at most 2 atoms.

- Molecule 1 is a protein called Serine/threonine-protein kinase B-raf.

Mol	Chain	Residues	Atoms					ZeroOcc	AltConf	Trace
			Total	C	N	O	S			
1	B	259	Total 2072	C 1312	N 368	O 379	S 13	34	0	0
1	A	262	Total 2094	C 1326	N 372	O 383	S 13	25	0	0
1	C	258	Total 2065	C 1308	N 367	O 377	S 13	5	0	0
1	D	262	Total 2094	C 1326	N 372	O 383	S 13	19	0	0

There are 80 discrepancies between the modelled and reference sequences:

Chain	Residue	Modelled	Actual	Comment	Reference
B	440	GLY	-	expression tag	UNP P15056
B	441	ALA	-	expression tag	UNP P15056
B	442	MET	-	expression tag	UNP P15056
B	443	ASP	-	expression tag	UNP P15056
B	543	ALA	ILE	engineered mutation	UNP P15056
B	544	SER	ILE	engineered mutation	UNP P15056
B	551	LYS	ILE	engineered mutation	UNP P15056
B	562	ARG	GLN	engineered mutation	UNP P15056
B	588	ASN	LEU	engineered mutation	UNP P15056
B	630	SER	LYS	engineered mutation	UNP P15056
B	667	GLU	PHE	engineered mutation	UNP P15056
B	673	SER	TYR	engineered mutation	UNP P15056
B	688	ARG	ALA	engineered mutation	UNP P15056
B	706	SER	LEU	engineered mutation	UNP P15056
B	709	ARG	GLN	engineered mutation	UNP P15056
B	713	GLU	SER	engineered mutation	UNP P15056
B	716	GLU	LEU	engineered mutation	UNP P15056
B	720	GLU	SER	engineered mutation	UNP P15056
B	722	SER	PRO	engineered mutation	UNP P15056
B	723	GLY	LYS	engineered mutation	UNP P15056
A	440	GLY	-	expression tag	UNP P15056

Continued on next page...

Continued from previous page...

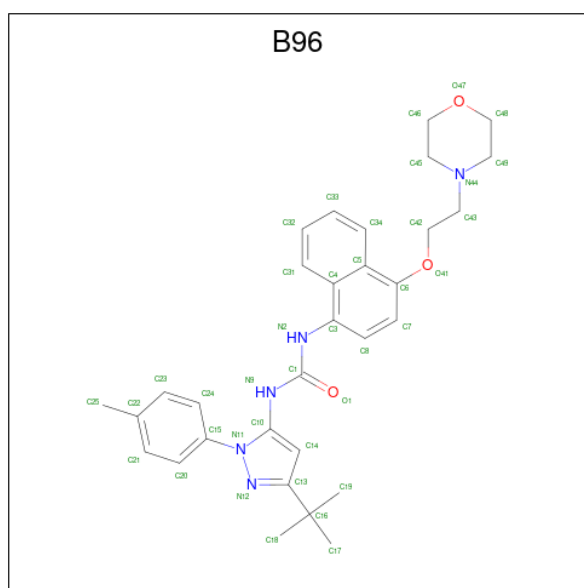
Chain	Residue	Modelled	Actual	Comment	Reference
A	441	ALA	-	expression tag	UNP P15056
A	442	MET	-	expression tag	UNP P15056
A	443	ASP	-	expression tag	UNP P15056
A	543	ALA	ILE	engineered mutation	UNP P15056
A	544	SER	ILE	engineered mutation	UNP P15056
A	551	LYS	ILE	engineered mutation	UNP P15056
A	562	ARG	GLN	engineered mutation	UNP P15056
A	588	ASN	LEU	engineered mutation	UNP P15056
A	630	SER	LYS	engineered mutation	UNP P15056
A	667	GLU	PHE	engineered mutation	UNP P15056
A	673	SER	TYR	engineered mutation	UNP P15056
A	688	ARG	ALA	engineered mutation	UNP P15056
A	706	SER	LEU	engineered mutation	UNP P15056
A	709	ARG	GLN	engineered mutation	UNP P15056
A	713	GLU	SER	engineered mutation	UNP P15056
A	716	GLU	LEU	engineered mutation	UNP P15056
A	720	GLU	SER	engineered mutation	UNP P15056
A	722	SER	PRO	engineered mutation	UNP P15056
A	723	GLY	LYS	engineered mutation	UNP P15056
C	440	GLY	-	expression tag	UNP P15056
C	441	ALA	-	expression tag	UNP P15056
C	442	MET	-	expression tag	UNP P15056
C	443	ASP	-	expression tag	UNP P15056
C	543	ALA	ILE	engineered mutation	UNP P15056
C	544	SER	ILE	engineered mutation	UNP P15056
C	551	LYS	ILE	engineered mutation	UNP P15056
C	562	ARG	GLN	engineered mutation	UNP P15056
C	588	ASN	LEU	engineered mutation	UNP P15056
C	630	SER	LYS	engineered mutation	UNP P15056
C	667	GLU	PHE	engineered mutation	UNP P15056
C	673	SER	TYR	engineered mutation	UNP P15056
C	688	ARG	ALA	engineered mutation	UNP P15056
C	706	SER	LEU	engineered mutation	UNP P15056
C	709	ARG	GLN	engineered mutation	UNP P15056
C	713	GLU	SER	engineered mutation	UNP P15056
C	716	GLU	LEU	engineered mutation	UNP P15056
C	720	GLU	SER	engineered mutation	UNP P15056
C	722	SER	PRO	engineered mutation	UNP P15056
C	723	GLY	LYS	engineered mutation	UNP P15056
D	440	GLY	-	expression tag	UNP P15056
D	441	ALA	-	expression tag	UNP P15056
D	442	MET	-	expression tag	UNP P15056

Continued on next page...

Continued from previous page...

Chain	Residue	Modelled	Actual	Comment	Reference
D	443	ASP	-	expression tag	UNP P15056
D	543	ALA	ILE	engineered mutation	UNP P15056
D	544	SER	ILE	engineered mutation	UNP P15056
D	551	LYS	ILE	engineered mutation	UNP P15056
D	562	ARG	GLN	engineered mutation	UNP P15056
D	588	ASN	LEU	engineered mutation	UNP P15056
D	630	SER	LYS	engineered mutation	UNP P15056
D	667	GLU	PHE	engineered mutation	UNP P15056
D	673	SER	TYR	engineered mutation	UNP P15056
D	688	ARG	ALA	engineered mutation	UNP P15056
D	706	SER	LEU	engineered mutation	UNP P15056
D	709	ARG	GLN	engineered mutation	UNP P15056
D	713	GLU	SER	engineered mutation	UNP P15056
D	716	GLU	LEU	engineered mutation	UNP P15056
D	720	GLU	SER	engineered mutation	UNP P15056
D	722	SER	PRO	engineered mutation	UNP P15056
D	723	GLY	LYS	engineered mutation	UNP P15056

- Molecule 2 is 1-(5-TERT-BUTYL-2-P-TOLYL-2H-PYRAZOL-3-YL)-3-[4-(2-MORPHOLIN-4-YL-ETHOXY)-NAPHTHALEN-1-YL]-UREA (three-letter code: B96) (formula: C₃₁H₃₇N₅O₃).



Mol	Chain	Residues	Atoms			ZeroOcc	AltConf	
			Total	C	N			O
2	B	1	Total	C	N	O	0	0
			39	31	5	3		
2	A	1	Total	C	N	O	0	0
			39	31	5	3		

Continued on next page...

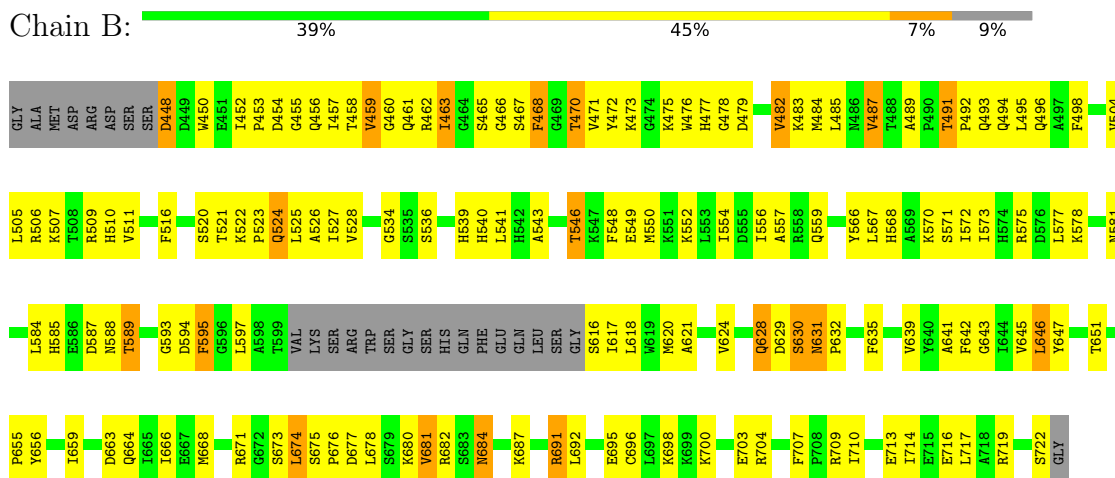
Continued from previous page...

Mol	Chain	Residues	Atoms				ZeroOcc	AltConf
			Total	C	N	O		
2	C	1	Total 39	C 31	N 5	O 3	0	0
2	D	1	Total 39	C 31	N 5	O 3	0	0

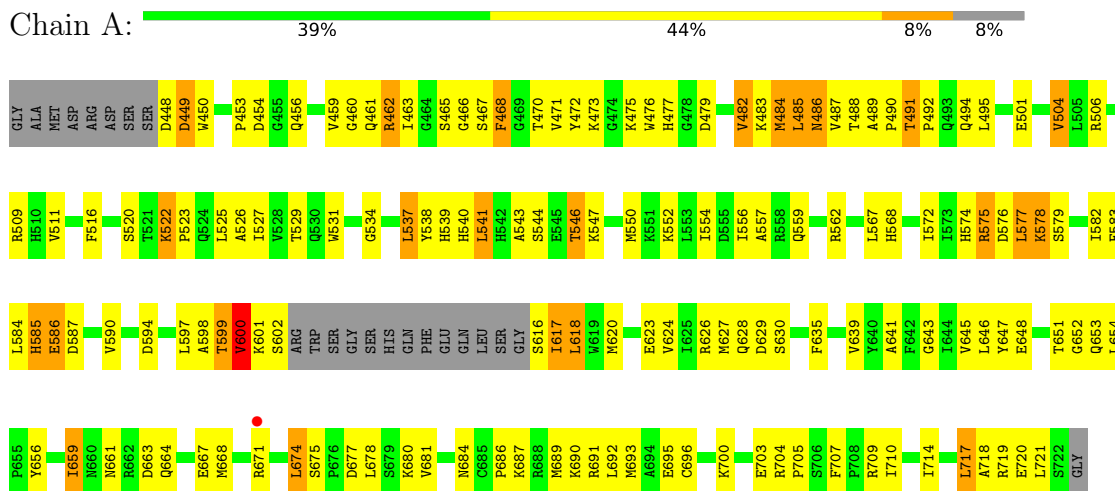
3 Residue-property plots

These plots are drawn for all protein, RNA, DNA and oligosaccharide chains in the entry. The first graphic for a chain summarises the proportions of the various outlier classes displayed in the second graphic. The second graphic shows the sequence view annotated by issues in geometry and electron density. Residues are color-coded according to the number of geometric quality criteria for which they contain at least one outlier: green = 0, yellow = 1, orange = 2 and red = 3 or more. A red dot above a residue indicates a poor fit to the electron density ($RSRZ > 2$). Stretches of 2 or more consecutive residues without any outlier are shown as a green connector. Residues present in the sample, but not in the model, are shown in grey.

- Molecule 1: Serine/threonine-protein kinase B-raf

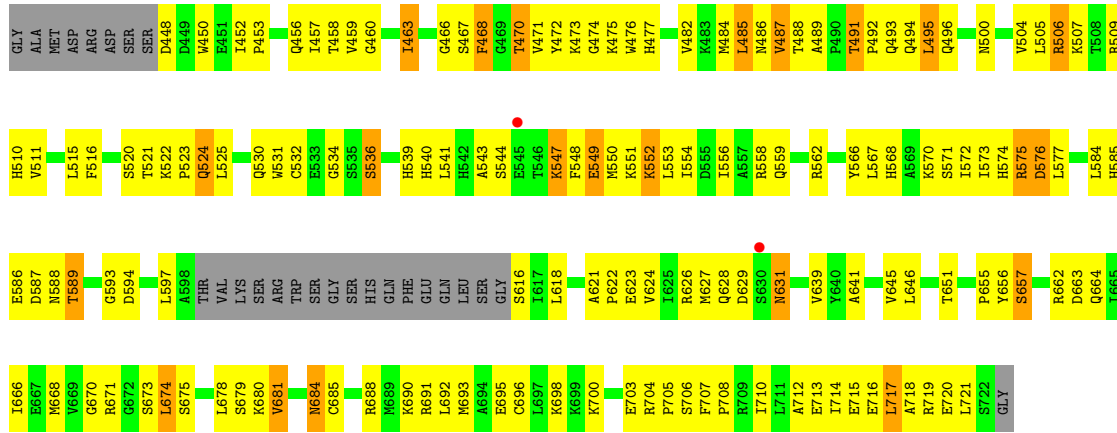


- Molecule 1: Serine/threonine-protein kinase B-raf

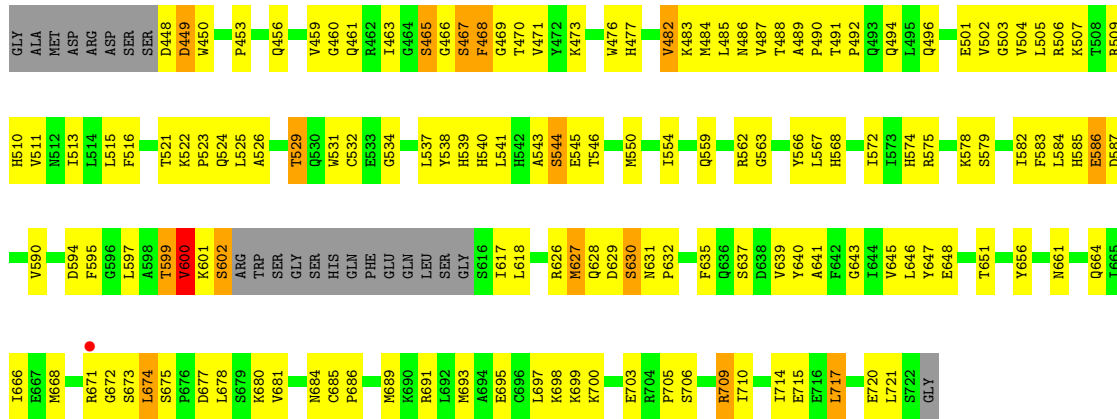


- Molecule 1: Serine/threonine-protein kinase B-raf





● Molecule 1: Serine/threonine-protein kinase B-raf



4 Data and refinement statistics

Property	Value	Source
Space group	P 1 21 1	Depositor
Cell constants a, b, c, α , β , γ	55.00Å 120.61Å 81.71Å 90.00° 90.44° 90.00°	Depositor
Resolution (Å)	42.54 – 3.09 48.52 – 3.09	Depositor EDS
% Data completeness (in resolution range)	89.5 (42.54-3.09) 90.9 (48.52-3.09)	Depositor EDS
R_{merge}	(Not available)	Depositor
R_{sym}	0.10	Depositor
$\langle I/\sigma(I) \rangle$ ¹	1.02 (at 3.07Å)	Xtrriage
Refinement program	PHENIX (phenix.refine: 1.7.1_743)	Depositor
R, R_{free}	0.232 , 0.295 0.233 , 0.297	Depositor DCC
R_{free} test set	911 reflections (5.14%)	wwPDB-VP
Wilson B-factor (Å ²)	68.5	Xtrriage
Anisotropy	0.176	Xtrriage
Bulk solvent k_{sol} (e/Å ³), B_{sol} (Å ²)	0.32 , 67.3	EDS
L-test for twinning ²	$\langle L \rangle = 0.37$, $\langle L^2 \rangle = 0.21$	Xtrriage
Estimated twinning fraction	0.049 for h,-k,-l	Xtrriage
F_o, F_c correlation	0.96	EDS
Total number of atoms	8481	wwPDB-VP
Average B, all atoms (Å ²)	71.0	wwPDB-VP

Xtrriage's analysis on translational NCS is as follows: *The analyses of the Patterson function reveals a significant off-origin peak that is 95.25 % of the origin peak, indicating pseudo-translational symmetry. The chance of finding a peak of this or larger height randomly in a structure without pseudo-translational symmetry is equal to 1.5845e-09. The detected translational NCS is most likely also responsible for the elevated intensity ratio.*

¹Intensities estimated from amplitudes.

²Theoretical values of $\langle |L| \rangle$, $\langle L^2 \rangle$ for acentric reflections are 0.5, 0.333 respectively for untwinned datasets, and 0.375, 0.2 for perfectly twinned datasets.

5 Model quality

5.1 Standard geometry

Bond lengths and bond angles in the following residue types are not validated in this section: B96

The Z score for a bond length (or angle) is the number of standard deviations the observed value is removed from the expected value. A bond length (or angle) with $|Z| > 5$ is considered an outlier worth inspection. RMSZ is the root-mean-square of all Z scores of the bond lengths (or angles).

Mol	Chain	Bond lengths		Bond angles	
		RMSZ	# Z >5	RMSZ	# Z >5
1	A	0.43	0/2136	0.65	0/2878
1	B	0.43	0/2114	0.60	0/2849
1	C	0.45	0/2107	0.65	0/2839
1	D	0.42	0/2136	0.64	0/2878
All	All	0.43	0/8493	0.64	0/11444

Chiral center outliers are detected by calculating the chiral volume of a chiral center and verifying if the center is modelled as a planar moiety or with the opposite hand. A planarity outlier is detected by checking planarity of atoms in a peptide group, atoms in a mainchain group or atoms of a sidechain that are expected to be planar.

Mol	Chain	#Chirality outliers	#Planarity outliers
1	A	0	1
1	C	0	1
1	D	0	3
All	All	0	5

There are no bond length outliers.

There are no bond angle outliers.

There are no chirality outliers.

All (5) planarity outliers are listed below:

Mol	Chain	Res	Type	Group
1	A	600	VAL	Peptide
1	C	485	LEU	Peptide
1	D	465	SER	Peptide
1	D	467	SER	Peptide
1	D	600	VAL	Peptide

5.2 Too-close contacts [i](#)

In the following table, the Non-H and H(model) columns list the number of non-hydrogen atoms and hydrogen atoms in the chain respectively. The H(added) column lists the number of hydrogen atoms added and optimized by MolProbity. The Clashes column lists the number of clashes within the asymmetric unit, whereas Symm-Clashes lists symmetry-related clashes.

Mol	Chain	Non-H	H(model)	H(added)	Clashes	Symm-Clashes
1	A	2094	0	2113	177	2
1	B	2072	0	2087	169	1
1	C	2065	0	2080	189	1
1	D	2094	0	2114	147	1
2	A	39	0	37	9	0
2	B	39	0	37	9	0
2	C	39	0	37	8	0
2	D	39	0	37	7	0
All	All	8481	0	8542	664	3

The all-atom clashscore is defined as the number of clashes found per 1000 atoms (including hydrogen atoms). The all-atom clashscore for this structure is 39.

All (664) close contacts within the same asymmetric unit are listed below, sorted by their clash magnitude.

Atom-1	Atom-2	Interatomic distance (Å)	Clash overlap (Å)
1:C:585:HIS:ND1	1:C:586:GLU:HG3	1.59	1.17
1:C:575:ARG:HH11	1:C:575:ARG:CG	1.61	1.13
1:A:575:ARG:NH2	1:A:602:SER:HB3	1.66	1.10
1:C:713:GLU:HG3	1:C:717:LEU:HD21	1.33	1.09
1:C:585:HIS:CE1	1:C:586:GLU:HG3	1.90	1.07
1:D:575:ARG:HH22	1:D:602:SER:HB3	1.11	1.06
1:C:575:ARG:HG2	1:C:575:ARG:NH1	1.47	1.06
1:B:700:LYS:HB2	1:B:703:GLU:HG3	1.38	1.04
1:A:575:ARG:HH22	1:A:602:SER:HB3	1.19	1.03
1:B:714:ILE:HA	1:B:717:LEU:HD13	1.42	1.00
1:C:626:ARG:NH2	1:C:670:GLY:O	1.95	0.98
1:C:688:ARG:NH1	1:C:720:GLU:OE2	2.00	0.94
1:B:642:PHE:O	1:B:646:LEU:HD13	1.66	0.94
1:C:466:GLY:HA3	1:C:597:LEU:HB3	1.49	0.94
1:A:691:ARG:HH22	1:D:461:GLN:NE2	1.65	0.93
1:D:579:SER:OG	1:D:648:GLU:OE2	1.85	0.93
1:D:575:ARG:NH2	1:D:602:SER:HB3	1.82	0.92
1:D:628:GLN:HG3	1:D:629:ASP:H	1.35	0.91
1:A:691:ARG:NH2	1:D:461:GLN:NE2	2.19	0.91

Continued on next page...

Continued from previous page...

Atom-1	Atom-2	Interatomic distance (Å)	Clash overlap (Å)
1:D:575:ARG:HH22	1:D:602:SER:CB	1.84	0.90
1:A:575:ARG:HH22	1:A:602:SER:CB	1.85	0.89
1:B:506:ARG:HD3	1:A:448:ASP:OD2	1.71	0.89
1:C:484:MET:HE1	1:C:524:GLN:NE2	1.89	0.87
1:B:466:GLY:HA3	1:B:597:LEU:HB3	1.55	0.86
1:B:678:LEU:O	1:B:681:VAL:HG13	1.75	0.86
1:A:537:LEU:HD22	1:A:541:LEU:HG	1.57	0.86
1:A:466:GLY:HA3	1:A:597:LEU:HB3	1.56	0.86
1:B:550:MET:CE	1:B:682:ARG:HH22	1.90	0.84
1:C:688:ARG:HG2	1:C:691:ARG:HH21	1.42	0.84
1:B:461:GLN:OE1	1:B:461:GLN:N	2.09	0.84
1:C:716:GLU:O	1:C:719:ARG:HG2	1.78	0.83
2:A:801:B96:H24	2:A:801:B96:N9	1.94	0.82
1:C:559:GLN:HE22	1:C:589:THR:HA	1.44	0.82
2:D:801:B96:H24	2:D:801:B96:N9	1.94	0.82
1:B:710:ILE:O	1:B:714:ILE:HG13	1.80	0.82
1:D:449:ASP:OD1	1:D:449:ASP:N	2.12	0.82
1:B:491:THR:HG23	1:B:494:GLN:NE2	1.95	0.81
1:C:714:ILE:HA	1:C:717:LEU:HG	1.61	0.81
1:A:475:LYS:NZ	1:A:479:ASP:OD1	2.11	0.81
1:A:579:SER:OG	1:A:648:GLU:OE1	1.97	0.81
1:A:465:SER:CB	1:A:470:THR:HG23	2.09	0.81
2:C:801:B96:N9	2:C:801:B96:H24	1.93	0.80
1:B:630:SER:C	1:B:632:PRO:HD3	2.02	0.80
1:B:491:THR:H	1:B:494:GLN:NE2	1.79	0.80
1:A:617:ILE:HG12	1:A:618:LEU:N	1.93	0.80
1:A:661:ASN:HB2	1:A:664:GLN:OE1	1.81	0.80
1:B:506:ARG:HD3	1:A:448:ASP:CG	2.02	0.79
1:A:484:MET:HE3	1:A:526:ALA:HB2	1.64	0.79
1:C:468:PHE:HB2	1:C:597:LEU:O	1.81	0.79
1:A:550:MET:O	1:A:554:ILE:HG12	1.82	0.79
1:B:671:ARG:HE	1:B:673:SER:HB3	1.47	0.79
1:C:548:PHE:HB2	1:C:553:LEU:CD1	2.12	0.79
1:B:471:VAL:HG12	1:B:483:LYS:HB2	1.63	0.79
1:B:450:TRP:HD1	1:B:506:ARG:NH2	1.80	0.79
1:B:468:PHE:CD1	1:B:468:PHE:N	2.52	0.78
1:D:550:MET:O	1:D:554:ILE:HG12	1.82	0.78
1:A:628:GLN:CG	1:A:629:ASP:H	1.95	0.78
2:B:801:B96:H24	2:B:801:B96:N9	1.97	0.78
1:C:698:LYS:HD3	1:C:703:GLU:HB3	1.66	0.78
1:D:579:SER:OG	1:D:648:GLU:CD	2.22	0.77

Continued on next page...

Continued from previous page...

Atom-1	Atom-2	Interatomic distance (Å)	Clash overlap (Å)
1:A:465:SER:HB3	1:A:470:THR:HG23	1.67	0.77
1:C:473:LYS:HE3	1:C:531:TRP:CE2	2.20	0.77
1:C:548:PHE:HB2	1:C:553:LEU:HD11	1.67	0.77
1:C:662:ARG:O	1:C:666:ILE:HG13	1.84	0.77
1:A:463:ILE:HD11	1:A:531:TRP:CZ3	2.19	0.76
1:A:628:GLN:HG3	1:A:629:ASP:H	1.51	0.76
1:C:586:GLU:HB2	1:C:588:ASN:OD1	1.86	0.75
1:D:672:GLY:O	1:D:699:LYS:NZ	2.18	0.75
1:A:600:VAL:HG22	1:A:601:LYS:CA	2.17	0.75
1:B:593:GLY:HA2	2:B:801:B96:H193	1.69	0.75
1:A:463:ILE:HD11	1:A:531:TRP:CH2	2.21	0.75
1:A:552:LYS:O	1:A:556:ILE:HG13	1.87	0.74
1:C:575:ARG:HH11	1:C:575:ARG:HG2	0.69	0.74
1:D:486:ASN:OD1	1:D:487:VAL:N	2.19	0.74
1:B:719:ARG:HG3	1:B:719:ARG:HH11	1.51	0.74
1:A:483:LYS:NZ	1:A:501:GLU:OE1	2.21	0.74
1:A:466:GLY:HA3	1:A:597:LEU:CB	2.17	0.74
1:C:594:ASP:N	2:C:801:B96:O1	2.21	0.74
1:A:600:VAL:HG22	1:A:601:LYS:HA	1.70	0.73
1:B:453:PRO:HG2	1:B:456:GLN:CD	2.09	0.73
1:B:550:MET:HE2	1:B:682:ARG:HH22	1.51	0.73
1:C:539:HIS:HA	1:C:543:ALA:HB3	1.71	0.73
1:A:579:SER:OG	1:A:648:GLU:CD	2.27	0.73
1:C:495:LEU:O	1:C:495:LEU:HD12	1.89	0.73
1:A:623:GLU:OE1	1:A:623:GLU:N	2.18	0.73
1:C:522:LYS:HB2	1:C:523:PRO:HD3	1.72	0.72
1:D:579:SER:OG	1:D:648:GLU:OE1	2.08	0.72
1:A:653:GLN:OE1	1:A:680:LYS:NZ	2.23	0.72
1:B:516:PHE:O	1:A:509:ARG:HD3	1.90	0.72
1:B:716:GLU:O	1:B:719:ARG:HG2	1.89	0.72
1:A:486:ASN:HD22	1:A:487:VAL:H	1.38	0.72
1:A:617:ILE:O	1:A:618:LEU:CB	2.37	0.72
1:C:540:HIS:CD2	1:C:584:LEU:HD12	2.24	0.71
1:B:714:ILE:CA	1:B:717:LEU:HD13	2.18	0.71
1:B:717:LEU:HD12	1:B:717:LEU:H	1.54	0.71
1:C:532:CYS:SG	1:C:585:HIS:HD2	2.13	0.71
1:C:516:PHE:O	1:D:509:ARG:HD3	1.90	0.71
1:A:579:SER:OG	1:A:648:GLU:OE2	2.08	0.71
1:B:646:LEU:CD1	1:B:646:LEU:N	2.54	0.70
1:D:465:SER:HB3	1:D:470:THR:HG23	1.73	0.70
1:C:700:LYS:HE3	1:C:703:GLU:OE2	1.91	0.70

Continued on next page...

Continued from previous page...

Atom-1	Atom-2	Interatomic distance (Å)	Clash overlap (Å)
1:D:502:VAL:O	1:D:506:ARG:HG2	1.91	0.70
1:B:453:PRO:HG2	1:B:456:GLN:NE2	2.06	0.70
1:B:539:HIS:HA	1:B:543:ALA:HB3	1.73	0.70
1:A:486:ASN:ND2	1:A:487:VAL:HG13	2.06	0.70
1:A:486:ASN:ND2	1:A:487:VAL:N	2.41	0.69
1:B:487:VAL:HG13	1:B:489:ALA:O	1.93	0.69
1:A:585:HIS:O	1:A:586:GLU:HG3	1.92	0.69
1:C:540:HIS:HD2	1:C:584:LEU:HD12	1.58	0.69
1:C:509:ARG:HD2	1:D:516:PHE:O	1.93	0.68
1:C:679:SER:H	1:C:681:VAL:HG13	1.57	0.68
1:C:698:LYS:O	1:C:704:ARG:NH1	2.26	0.68
1:B:651:THR:HG22	1:B:681:VAL:HA	1.76	0.68
1:B:668:MET:HG2	1:B:671:ARG:NH2	2.08	0.68
1:A:664:GLN:O	1:A:668:MET:HG3	1.94	0.68
1:D:504:VAL:HG23	1:D:572:ILE:HD13	1.76	0.68
1:B:450:TRP:CD1	1:B:506:ARG:NH2	2.62	0.68
1:A:600:VAL:HG22	1:A:601:LYS:N	2.08	0.68
1:C:651:THR:HG22	1:C:681:VAL:N	2.10	0.67
1:A:628:GLN:HG3	1:A:629:ASP:N	2.09	0.67
1:C:622:PRO:HB2	1:C:626:ARG:HH12	1.58	0.67
1:C:678:LEU:C	1:C:680:LYS:H	1.95	0.67
1:B:642:PHE:O	1:B:646:LEU:CD1	2.42	0.67
1:C:484:MET:CE	1:C:524:GLN:NE2	2.57	0.67
1:B:646:LEU:CD1	1:B:646:LEU:H	2.08	0.67
1:A:484:MET:CE	1:A:526:ALA:HB2	2.25	0.66
1:B:646:LEU:N	1:B:646:LEU:HD12	2.10	0.66
1:A:486:ASN:HD21	1:A:487:VAL:HG13	1.60	0.66
1:B:717:LEU:HD12	1:B:717:LEU:N	2.10	0.66
1:B:461:GLN:H	1:B:461:GLN:CD	2.00	0.66
1:B:550:MET:O	1:B:554:ILE:HG12	1.95	0.66
1:C:631:ASN:O	1:C:631:ASN:ND2	2.22	0.66
1:D:656:TYR:HE1	1:D:674:LEU:HD22	1.61	0.66
1:A:574:HIS:ND1	1:A:576:ASP:O	2.30	0.65
1:C:681:VAL:CG2	1:C:690:LYS:HE2	2.27	0.65
1:C:585:HIS:C	1:C:587:ASP:H	1.99	0.65
1:B:550:MET:HE3	1:B:684:ASN:HB2	1.78	0.65
1:B:671:ARG:NE	1:B:673:SER:HB3	2.11	0.65
1:A:490:PRO:HB2	1:A:495:LEU:HD12	1.76	0.65
1:C:509:ARG:HG3	1:D:450:TRP:CH2	2.32	0.64
1:A:485:LEU:HD23	1:A:494:GLN:HB3	1.78	0.64
1:D:532:CYS:SG	1:D:585:HIS:CD2	2.90	0.64

Continued on next page...

Continued from previous page...

Atom-1	Atom-2	Interatomic distance (Å)	Clash overlap (Å)
1:B:493:GLN:O	1:B:496:GLN:HB2	1.97	0.64
1:A:575:ARG:NH1	1:A:575:ARG:HG2	2.13	0.64
1:B:594:ASP:N	2:B:801:B96:O1	2.31	0.64
1:B:687:LYS:HB3	1:B:691:ARG:NH1	2.13	0.64
1:B:709:ARG:O	1:B:713:GLU:HG2	1.97	0.64
1:A:647:TYR:CE2	1:A:651:THR:HG21	2.33	0.64
1:D:491:THR:H	1:D:494:GLN:NE2	1.96	0.64
1:D:599:THR:C	1:D:600:VAL:HG12	2.17	0.63
1:A:486:ASN:HD22	1:A:487:VAL:N	1.95	0.63
1:C:716:GLU:O	1:C:720:GLU:HG3	1.99	0.63
1:A:714:ILE:HA	1:A:717:LEU:HG	1.80	0.63
1:B:646:LEU:HD13	1:B:646:LEU:H	1.64	0.63
2:A:801:B96:O1	2:A:801:B96:H8	1.99	0.63
1:D:671:ARG:NE	1:D:673:SER:OG	2.24	0.63
1:A:641:ALA:O	1:A:645:VAL:HG23	1.99	0.63
1:B:570:LYS:NZ	1:A:449:ASP:O	2.32	0.62
1:C:585:HIS:CE1	1:C:586:GLU:CG	2.75	0.62
1:D:628:GLN:HG3	1:D:629:ASP:N	2.09	0.62
1:C:473:LYS:HE3	1:C:531:TRP:NE1	2.13	0.62
1:A:486:ASN:ND2	1:A:487:VAL:H	1.97	0.62
1:C:593:GLY:HA2	2:C:801:B96:H192	1.81	0.62
1:C:692:LEU:O	1:C:695:GLU:HB2	2.00	0.62
1:D:594:ASP:N	2:D:801:B96:O1	2.29	0.62
1:D:651:THR:HG22	1:D:681:VAL:HA	1.81	0.62
1:B:671:ARG:HG3	1:B:673:SER:H	1.65	0.62
1:C:713:GLU:O	1:C:716:GLU:HG3	1.99	0.61
1:B:651:THR:HG22	1:B:681:VAL:N	2.15	0.61
1:A:718:ALA:HA	1:A:721:LEU:HD11	1.82	0.61
1:A:485:LEU:CD1	1:A:485:LEU:N	2.63	0.61
1:A:576:ASP:OD1	1:A:577:LEU:N	2.33	0.61
1:A:628:GLN:CG	1:A:629:ASP:N	2.63	0.61
1:C:491:THR:H	1:C:494:GLN:NE2	1.98	0.61
1:D:466:GLY:HA3	1:D:469:GLY:O	2.00	0.61
1:B:659:ILE:N	1:B:659:ILE:HD12	2.16	0.61
1:A:585:HIS:C	1:A:586:GLU:HG3	2.21	0.61
1:C:548:PHE:CB	1:C:553:LEU:CD1	2.77	0.61
1:C:641:ALA:O	1:C:645:VAL:HG23	2.01	0.61
1:B:509:ARG:HD3	1:A:516:PHE:O	2.01	0.60
1:D:463:ILE:CD1	1:D:531:TRP:HZ3	2.14	0.60
1:B:692:LEU:O	1:B:695:GLU:HB2	2.01	0.60
1:A:539:HIS:O	1:A:543:ALA:HB3	2.02	0.60

Continued on next page...

Continued from previous page...

Atom-1	Atom-2	Interatomic distance (Å)	Clash overlap (Å)
1:D:705:PRO:HG2	1:D:710:ILE:HD11	1.82	0.60
1:A:719:ARG:CG	1:C:719:ARG:HH22	2.14	0.60
1:C:684:ASN:OD1	1:C:684:ASN:N	2.32	0.60
1:B:696:CYS:O	1:B:704:ARG:HD3	2.00	0.60
1:C:688:ARG:HG2	1:C:691:ARG:NH2	2.14	0.60
1:D:674:LEU:HD23	1:D:675:SER:N	2.16	0.60
2:C:801:B96:N9	2:C:801:B96:C24	2.63	0.60
2:D:801:B96:O1	2:D:801:B96:H8	2.02	0.60
1:B:651:THR:HG22	1:B:681:VAL:CA	2.32	0.60
1:A:575:ARG:HG2	1:A:575:ARG:HH11	1.66	0.60
1:A:579:SER:HG	1:A:648:GLU:CD	2.01	0.60
1:C:491:THR:HG23	1:C:494:GLN:CD	2.22	0.60
1:C:532:CYS:SG	1:C:585:HIS:CD2	2.94	0.60
1:A:594:ASP:N	2:A:801:B96:O1	2.35	0.60
1:C:509:ARG:HG3	1:D:450:TRP:CZ3	2.36	0.60
1:D:646:LEU:HB3	1:D:693:MET:HE2	1.83	0.60
1:A:575:ARG:HH11	1:A:575:ARG:CG	2.16	0.59
1:B:719:ARG:HG3	1:B:719:ARG:NH1	2.17	0.59
1:B:678:LEU:O	1:B:681:VAL:CG1	2.50	0.59
1:C:466:GLY:C	1:C:468:PHE:H	2.05	0.59
1:C:504:VAL:HG21	2:C:801:B96:H20	1.84	0.59
1:C:671:ARG:HE	1:C:673:SER:CB	2.16	0.59
1:A:678:LEU:O	1:A:681:VAL:HG13	2.02	0.59
1:C:716:GLU:HG3	1:C:717:LEU:HD23	1.84	0.59
1:D:466:GLY:O	1:D:467:SER:HB2	2.03	0.59
1:D:559:GLN:O	1:D:562:ARG:HB2	2.02	0.59
1:D:574:HIS:O	1:D:575:ARG:HB2	2.02	0.59
1:A:484:MET:HE3	1:A:526:ALA:CB	2.31	0.58
1:A:692:LEU:O	1:A:695:GLU:HB2	2.02	0.58
1:C:550:MET:O	1:C:554:ILE:HG12	2.03	0.58
1:C:717:LEU:HD23	1:C:717:LEU:N	2.18	0.58
1:D:471:VAL:HA	1:D:482:VAL:O	2.02	0.58
1:B:567:LEU:HD22	1:B:572:ILE:HG21	1.84	0.58
1:B:475:LYS:NZ	1:B:479:ASP:OD1	2.37	0.58
1:B:717:LEU:H	1:B:717:LEU:CD1	2.16	0.58
1:D:629:ASP:OD2	1:D:630:SER:N	2.36	0.58
1:C:688:ARG:HA	1:C:691:ARG:NH2	2.18	0.58
2:C:801:B96:O1	2:C:801:B96:H8	2.02	0.58
1:A:574:HIS:CG	1:A:576:ASP:O	2.57	0.58
1:C:657:SER:HG	1:C:680:LYS:HZ1	1.48	0.58
1:B:491:THR:HG23	1:B:494:GLN:CD	2.24	0.58

Continued on next page...

Continued from previous page...

Atom-1	Atom-2	Interatomic distance (Å)	Clash overlap (Å)
1:B:484:MET:CE	1:B:526:ALA:HB2	2.34	0.58
1:B:471:VAL:CG1	1:B:483:LYS:HB2	2.33	0.58
1:A:466:GLY:O	1:A:467:SER:HB2	2.04	0.57
1:A:582:ILE:HG23	1:A:590:VAL:HG13	1.84	0.57
1:D:463:ILE:HD11	1:D:531:TRP:CZ3	2.40	0.57
1:D:641:ALA:O	1:D:645:VAL:HG23	2.05	0.57
1:A:678:LEU:O	1:A:681:VAL:HG22	2.03	0.57
1:C:471:VAL:HA	1:C:482:VAL:O	2.05	0.57
1:C:710:ILE:O	1:C:714:ILE:HG13	2.04	0.57
1:B:509:ARG:HG3	1:A:450:TRP:CH2	2.39	0.57
2:B:801:B96:O1	2:B:801:B96:H8	2.04	0.57
1:A:617:ILE:O	1:A:618:LEU:HB3	2.04	0.57
1:A:629:ASP:OD1	1:A:630:SER:N	2.36	0.57
1:C:463:ILE:HG22	1:C:471:VAL:HG23	1.86	0.57
1:C:585:HIS:C	1:C:587:ASP:N	2.58	0.57
1:C:681:VAL:HG21	1:C:690:LYS:HE2	1.86	0.57
1:D:491:THR:HB	1:D:492:PRO:HD2	1.86	0.57
1:B:462:ARG:HH21	1:C:698:LYS:NZ	2.02	0.57
1:B:495:LEU:HD12	1:B:525:LEU:HD11	1.87	0.57
1:C:713:GLU:O	1:C:716:GLU:CG	2.53	0.57
1:B:498:PHE:CD2	1:B:525:LEU:HD22	2.39	0.57
1:C:712:ALA:O	1:C:715:GLU:HG2	2.04	0.57
1:A:465:SER:HB2	1:A:470:THR:HG23	1.84	0.56
1:B:684:ASN:N	1:B:684:ASN:OD1	2.37	0.56
1:B:713:GLU:O	1:B:717:LEU:CD1	2.52	0.56
1:B:507:LYS:HG2	1:A:448:ASP:N	2.21	0.56
1:A:449:ASP:OD1	1:A:449:ASP:C	2.42	0.56
1:A:583:PHE:O	1:A:584:LEU:HD23	2.04	0.56
1:D:463:ILE:CD1	1:D:531:TRP:CZ3	2.89	0.56
1:D:522:LYS:HB2	1:D:523:PRO:HD3	1.88	0.56
1:D:600:VAL:HG22	1:D:601:LYS:N	2.20	0.56
1:A:617:ILE:O	1:A:618:LEU:HB2	2.05	0.56
1:C:626:ARG:HG3	1:C:628:GLN:HB2	1.87	0.56
1:D:656:TYR:CE1	1:D:674:LEU:HD22	2.39	0.56
1:D:700:LYS:HB2	1:D:703:GLU:HG3	1.88	0.56
1:B:550:MET:HE1	1:B:682:ARG:HH22	1.71	0.56
1:B:618:LEU:HD13	1:B:655:PRO:HD2	1.88	0.56
1:B:454:ASP:OD1	1:B:455:GLY:N	2.39	0.55
1:B:454:ASP:OD1	1:B:523:PRO:HG3	2.05	0.55
1:C:484:MET:HE1	1:C:524:GLN:HE22	1.69	0.55
1:A:575:ARG:HH22	1:A:602:SER:CA	2.18	0.55

Continued on next page...

Continued from previous page...

Atom-1	Atom-2	Interatomic distance (Å)	Clash overlap (Å)
1:A:617:ILE:HA	1:A:620:MET:HG3	1.87	0.55
1:A:574:HIS:C	1:A:576:ASP:H	2.10	0.55
1:A:574:HIS:O	1:A:575:ARG:CB	2.55	0.55
1:C:678:LEU:C	1:C:680:LYS:N	2.60	0.55
1:D:714:ILE:HA	1:D:717:LEU:HG	1.87	0.55
1:B:641:ALA:O	1:B:645:VAL:HG23	2.07	0.55
1:B:450:TRP:CH2	1:A:509:ARG:HG3	2.42	0.55
1:A:720:GLU:O	1:A:721:LEU:HG	2.07	0.55
1:C:450:TRP:HD1	1:C:506:ARG:NH1	2.04	0.55
1:D:483:LYS:O	1:D:526:ALA:HA	2.07	0.55
1:B:552:LYS:O	1:B:556:ILE:HG13	2.06	0.55
1:C:576:ASP:O	1:C:577:LEU:C	2.45	0.55
1:D:691:ARG:O	1:D:695:GLU:HG2	2.07	0.55
1:A:719:ARG:NE	1:C:719:ARG:HH22	2.05	0.54
1:B:698:LYS:NZ	1:B:703:GLU:O	2.39	0.54
1:D:539:HIS:O	1:D:543:ALA:N	2.38	0.54
1:B:475:LYS:HD3	1:B:478:GLY:O	2.07	0.54
1:B:482:VAL:CG1	1:B:528:VAL:HG22	2.37	0.54
1:A:538:TYR:HB2	1:A:579:SER:HB2	1.90	0.54
1:B:546:THR:HG21	1:B:548:PHE:CZ	2.43	0.54
1:C:500:ASN:O	1:C:504:VAL:HG23	2.08	0.54
1:D:550:MET:HE3	1:D:684:ASN:OD1	2.08	0.54
1:B:509:ARG:HG3	1:A:450:TRP:CZ3	2.43	0.54
1:B:487:VAL:CG1	1:B:489:ALA:O	2.55	0.54
1:B:713:GLU:O	1:B:717:LEU:HD12	2.08	0.54
1:A:620:MET:HE2	1:A:624:VAL:HG12	1.89	0.54
1:A:651:THR:OG1	1:A:652:GLY:N	2.41	0.54
1:A:656:TYR:HE1	1:A:674:LEU:HD22	1.72	0.54
1:C:486:ASN:C	1:C:487:VAL:HG22	2.28	0.54
1:C:639:VAL:HG11	1:C:704:ARG:HB3	1.90	0.54
1:C:671:ARG:HE	1:C:673:SER:HB3	1.72	0.54
1:C:484:MET:HE2	1:C:524:GLN:OE1	2.08	0.54
1:A:484:MET:C	1:A:485:LEU:HD12	2.28	0.54
1:A:463:ILE:HD11	1:A:531:TRP:HZ3	1.71	0.54
1:D:550:MET:CE	1:D:684:ASN:OD1	2.56	0.54
1:B:466:GLY:O	1:B:467:SER:C	2.46	0.53
1:B:485:LEU:CD2	1:B:494:GLN:HG2	2.38	0.53
1:B:593:GLY:HA2	2:B:801:B96:C19	2.38	0.53
1:A:617:ILE:HA	1:A:620:MET:CG	2.39	0.53
1:B:549:GLU:H	1:B:552:LYS:HE3	1.72	0.53
1:A:463:ILE:CD1	1:A:531:TRP:CZ3	2.88	0.53

Continued on next page...

Continued from previous page...

Atom-1	Atom-2	Interatomic distance (Å)	Clash overlap (Å)
1:D:674:LEU:HD23	1:D:675:SER:H	1.72	0.53
1:A:453:PRO:HB2	1:A:456:GLN:CD	2.28	0.53
1:A:577:LEU:C	1:A:578:LYS:HG2	2.28	0.53
1:C:484:MET:CE	1:C:524:GLN:CD	2.77	0.53
1:C:679:SER:N	1:C:681:VAL:HG13	2.23	0.53
1:C:700:LYS:HB2	1:C:703:GLU:HG3	1.90	0.53
1:C:715:GLU:HG3	1:C:716:GLU:N	2.24	0.53
1:D:583:PHE:C	1:D:584:LEU:HD12	2.29	0.53
1:B:643:GLY:HA2	1:B:646:LEU:HD22	1.90	0.53
1:A:468:PHE:HB2	1:A:597:LEU:O	2.08	0.53
1:A:691:ARG:O	1:A:695:GLU:HG2	2.08	0.53
1:D:583:PHE:O	1:D:584:LEU:HD12	2.08	0.53
1:C:470:THR:OG1	1:C:486:ASN:ND2	2.42	0.52
1:C:696:CYS:O	1:C:704:ARG:HD3	2.08	0.52
1:D:460:GLY:N	1:D:473:LYS:O	2.39	0.52
1:D:600:VAL:CG2	1:D:601:LYS:N	2.73	0.52
1:D:698:LYS:HB3	1:D:703:GLU:OE1	2.09	0.52
1:A:486:ASN:HD22	1:A:486:ASN:N	2.07	0.52
1:B:700:LYS:O	1:B:703:GLU:HB2	2.10	0.52
1:C:585:HIS:O	1:C:586:GLU:HB2	2.09	0.52
1:C:678:LEU:O	1:C:679:SER:OG	2.13	0.52
1:D:501:GLU:HG2	1:D:505:LEU:HD12	1.90	0.52
1:D:677:ASP:OD2	1:D:680:LYS:HG2	2.10	0.52
1:B:470:THR:O	1:B:483:LYS:HA	2.09	0.52
1:B:621:ALA:O	1:B:624:VAL:HB	2.09	0.52
1:A:490:PRO:HG2	1:A:495:LEU:HD11	1.91	0.52
1:D:453:PRO:HB2	1:D:456:GLN:CD	2.30	0.52
1:C:523:PRO:HB2	1:C:524:GLN:HG3	1.91	0.52
1:C:552:LYS:O	1:C:556:ILE:HG13	2.10	0.52
1:D:534:GLY:HA3	1:D:584:LEU:O	2.10	0.52
1:A:488:THR:O	1:A:489:ALA:C	2.48	0.52
1:A:700:LYS:HB2	1:A:703:GLU:CD	2.30	0.51
1:C:651:THR:HG22	1:C:681:VAL:CA	2.39	0.51
2:A:801:B96:N9	2:A:801:B96:C24	2.62	0.51
1:C:510:HIS:HD2	1:C:566:TYR:CD1	2.27	0.51
1:C:521:THR:HG22	1:C:525:LEU:HD23	1.92	0.51
1:C:551:LYS:O	1:C:552:LYS:C	2.48	0.51
1:D:504:VAL:HG13	1:D:505:LEU:N	2.24	0.51
1:D:540:HIS:HD2	1:D:584:LEU:HD22	1.74	0.51
1:D:678:LEU:O	1:D:681:VAL:HG13	2.11	0.51
1:B:485:LEU:N	1:B:485:LEU:HD12	2.26	0.51

Continued on next page...

Continued from previous page...

Atom-1	Atom-2	Interatomic distance (Å)	Clash overlap (Å)
1:A:485:LEU:N	1:A:485:LEU:HD13	2.25	0.51
1:A:501:GLU:HG3	2:A:801:B96:C15	2.41	0.51
1:A:659:ILE:CD1	1:A:659:ILE:N	2.73	0.51
1:C:567:LEU:HD22	1:C:572:ILE:HG21	1.93	0.51
1:D:546:THR:HG22	1:D:546:THR:O	2.10	0.51
1:B:482:VAL:HG12	1:B:528:VAL:HG22	1.93	0.51
1:B:540:HIS:CD2	1:B:584:LEU:HD12	2.45	0.51
1:C:539:HIS:CE1	1:C:544:SER:OG	2.63	0.51
1:A:600:VAL:CG2	1:A:601:LYS:HA	2.38	0.51
1:C:586:GLU:O	1:C:587:ASP:HB2	2.09	0.51
1:B:462:ARG:NH2	1:C:698:LYS:NZ	2.58	0.51
1:C:448:ASP:HB3	1:D:506:ARG:NH1	2.25	0.51
1:D:484:MET:C	1:D:485:LEU:HD22	2.31	0.51
1:A:463:ILE:CD1	1:A:531:TRP:HZ3	2.23	0.50
1:A:686:PRO:O	1:A:689:MET:HB3	2.10	0.50
1:A:705:PRO:HG2	1:A:710:ILE:HD11	1.93	0.50
1:C:646:LEU:HB3	1:C:693:MET:HE2	1.93	0.50
1:D:491:THR:H	1:D:494:GLN:HE21	1.58	0.50
1:A:620:MET:CE	1:A:624:VAL:HG12	2.40	0.50
1:B:527:ILE:HB	2:B:801:B96:H32	1.93	0.50
1:B:631:ASN:N	1:B:632:PRO:HD3	2.27	0.50
1:B:677:ASP:OD2	1:B:680:LYS:HE2	2.11	0.50
1:A:491:THR:O	1:A:495:LEU:HD13	2.10	0.50
1:A:539:HIS:O	1:A:543:ALA:N	2.42	0.50
1:A:681:VAL:HG21	1:A:690:LYS:HD2	1.93	0.50
1:C:506:ARG:HD3	1:D:448:ASP:HB3	1.93	0.50
1:D:585:HIS:C	1:D:586:GLU:HG3	2.32	0.50
2:D:801:B96:N9	2:D:801:B96:C24	2.64	0.50
1:B:504:VAL:HG13	1:B:505:LEU:N	2.26	0.50
1:B:659:ILE:N	1:B:659:ILE:CD1	2.74	0.50
1:A:540:HIS:ND1	1:A:546:THR:HG21	2.26	0.50
1:C:716:GLU:HA	1:C:719:ARG:HD2	1.94	0.50
1:C:664:GLN:O	1:C:668:MET:HG3	2.11	0.50
1:B:510:HIS:HD2	1:B:566:TYR:CD1	2.30	0.50
1:A:490:PRO:HB2	1:A:495:LEU:CD1	2.40	0.50
1:C:719:ARG:HG3	1:C:720:GLU:N	2.27	0.50
1:B:676:PRO:O	1:B:678:LEU:HD12	2.12	0.50
1:A:527:ILE:HG22	2:A:801:B96:H32	1.93	0.50
1:D:537:LEU:O	1:D:541:LEU:HG	2.12	0.50
1:D:595:PHE:CD2	1:D:595:PHE:N	2.79	0.50
1:B:523:PRO:O	1:B:524:GLN:HG2	2.11	0.50

Continued on next page...

Continued from previous page...

Atom-1	Atom-2	Interatomic distance (Å)	Clash overlap (Å)
1:C:460:GLY:N	1:C:473:LYS:O	2.45	0.50
1:D:448:ASP:N	1:D:449:ASP:OD1	2.45	0.50
1:D:490:PRO:HA	1:D:494:GLN:NE2	2.27	0.50
1:A:635:PHE:O	1:A:639:VAL:HG23	2.11	0.49
1:D:486:ASN:OD1	1:D:487:VAL:CA	2.60	0.49
1:B:581:ASN:HB3	1:B:593:GLY:O	2.12	0.49
1:A:576:ASP:OD1	1:A:576:ASP:C	2.50	0.49
1:C:509:ARG:NH1	1:D:516:PHE:HD2	2.10	0.49
1:D:618:LEU:HD22	1:D:656:TYR:HD2	1.76	0.49
1:A:476:TRP:O	1:A:477:HIS:C	2.51	0.49
1:A:600:VAL:CG2	1:A:601:LYS:N	2.73	0.49
1:D:539:HIS:O	1:D:543:ALA:HB3	2.13	0.49
1:A:550:MET:CE	1:A:684:ASN:OD1	2.61	0.49
1:C:452:ILE:HG12	1:C:476:TRP:CZ2	2.47	0.49
1:D:582:ILE:HG23	1:D:590:VAL:HG13	1.94	0.49
1:A:484:MET:C	1:A:485:LEU:CD1	2.81	0.49
1:A:554:ILE:O	1:A:557:ALA:HB3	2.12	0.49
1:C:698:LYS:HB3	1:C:703:GLU:HB3	1.94	0.49
1:D:484:MET:HA	1:D:525:LEU:O	2.12	0.49
1:B:595:PHE:N	1:B:595:PHE:CD2	2.79	0.49
1:C:698:LYS:HB3	1:C:703:GLU:CB	2.43	0.49
1:D:487:VAL:O	1:D:488:THR:HG23	2.12	0.49
1:A:544:SER:OG	1:A:546:THR:OG1	1.95	0.49
1:C:539:HIS:CA	1:C:543:ALA:HB3	2.39	0.49
1:C:628:GLN:CD	1:C:629:ASP:H	2.15	0.49
1:A:484:MET:HA	1:A:525:LEU:O	2.13	0.49
1:A:710:ILE:O	1:A:714:ILE:HG13	2.13	0.49
1:D:562:ARG:NH2	1:D:715:GLU:OE2	2.46	0.49
1:B:452:ILE:HG21	1:B:457:ILE:HD11	1.95	0.48
1:D:661:ASN:HB3	1:D:664:GLN:HB2	1.96	0.48
1:A:623:GLU:OE2	1:A:704:ARG:NH2	2.46	0.48
1:C:539:HIS:HA	1:C:543:ALA:CB	2.42	0.48
1:C:623:GLU:HA	1:C:626:ARG:HH11	1.79	0.48
1:C:678:LEU:HD12	1:C:678:LEU:N	2.28	0.48
1:B:668:MET:HG2	1:B:671:ARG:HH21	1.77	0.48
1:A:647:TYR:O	1:A:651:THR:HG23	2.14	0.48
1:C:505:LEU:HB3	1:C:516:PHE:HB2	1.95	0.48
1:D:599:THR:C	1:D:600:VAL:CG1	2.82	0.48
1:B:559:GLN:HE22	1:B:589:THR:HA	1.77	0.48
1:C:458:THR:O	1:C:474:GLY:HA2	2.13	0.48
1:A:674:LEU:HD23	1:A:675:SER:N	2.28	0.48

Continued on next page...

Continued from previous page...

Atom-1	Atom-2	Interatomic distance (Å)	Clash overlap (Å)
1:C:534:GLY:HA3	1:C:584:LEU:O	2.13	0.48
1:D:700:LYS:HB2	1:D:703:GLU:CG	2.44	0.48
1:A:483:LYS:NZ	1:A:501:GLU:CD	2.67	0.48
1:A:691:ARG:HH22	1:D:461:GLN:CD	2.17	0.48
1:A:534:GLY:HA3	1:A:584:LEU:O	2.14	0.48
1:D:617:ILE:CG2	1:D:618:LEU:N	2.77	0.48
1:D:466:GLY:HA2	1:D:597:LEU:HB3	1.96	0.48
1:D:599:THR:O	1:D:600:VAL:HG12	2.13	0.48
1:B:498:PHE:CG	1:B:525:LEU:HD22	2.48	0.47
1:C:551:LYS:NZ	1:C:721:LEU:HD13	2.29	0.47
1:C:685:CYS:O	1:C:690:LYS:HE3	2.14	0.47
1:B:463:ILE:HG22	1:B:471:VAL:HG23	1.96	0.47
1:B:484:MET:HE2	1:B:526:ALA:HB2	1.95	0.47
1:A:674:LEU:HD23	1:A:675:SER:H	1.78	0.47
1:C:466:GLY:C	1:C:468:PHE:N	2.68	0.47
1:A:504:VAL:HG12	1:A:572:ILE:HD13	1.94	0.47
1:B:656:TYR:HE1	1:B:674:LEU:HD22	1.79	0.47
1:C:468:PHE:CB	1:C:597:LEU:O	2.59	0.47
1:C:475:LYS:HA	1:C:475:LYS:HD2	1.69	0.47
1:A:639:VAL:HG13	1:A:710:ILE:CD1	2.44	0.47
1:C:491:THR:HB	1:C:492:PRO:HD2	1.96	0.47
1:C:536:SER:O	1:C:539:HIS:HB3	2.14	0.47
1:C:639:VAL:HG21	1:C:705:PRO:O	2.14	0.47
1:A:627:MET:O	1:A:629:ASP:O	2.33	0.47
1:D:664:GLN:HG2	1:D:668:MET:SD	2.55	0.47
1:A:586:GLU:O	1:A:587:ASP:HB2	2.15	0.47
1:C:539:HIS:HE1	1:C:544:SER:OG	1.97	0.47
1:C:713:GLU:O	1:C:716:GLU:N	2.48	0.47
1:A:720:GLU:CG	1:A:721:LEU:N	2.78	0.47
2:C:801:B96:H7	2:C:801:B96:H422	1.56	0.47
1:D:586:GLU:O	1:D:587:ASP:HB2	2.14	0.47
1:C:621:ALA:O	1:C:624:VAL:HB	2.15	0.47
1:D:532:CYS:SG	1:D:585:HIS:HD2	2.36	0.47
1:B:471:VAL:HA	1:B:482:VAL:O	2.15	0.47
1:C:567:LEU:O	1:C:570:LYS:N	2.48	0.47
1:B:616:SER:O	1:B:620:MET:HG3	2.14	0.46
1:B:674:LEU:HD23	1:B:675:SER:N	2.30	0.46
1:C:448:ASP:HB3	1:D:506:ARG:CZ	2.45	0.46
1:C:539:HIS:O	1:C:543:ALA:HB3	2.15	0.46
1:C:656:TYR:HE1	1:C:674:LEU:HD22	1.80	0.46
1:D:678:LEU:O	1:D:681:VAL:HG22	2.15	0.46

Continued on next page...

Continued from previous page...

Atom-1	Atom-2	Interatomic distance (Å)	Clash overlap (Å)
1:B:457:ILE:HG22	1:B:458:THR:N	2.30	0.46
1:A:522:LYS:HB2	1:A:523:PRO:HD3	1.97	0.46
1:B:647:TYR:CZ	1:B:651:THR:HG21	2.51	0.46
1:C:509:ARG:NH1	1:D:516:PHE:HB3	2.31	0.46
1:C:700:LYS:HB2	1:C:703:GLU:CG	2.45	0.46
1:B:452:ILE:HG12	1:B:476:TRP:CZ2	2.51	0.46
1:A:460:GLY:N	1:A:473:LYS:O	2.43	0.46
1:A:463:ILE:HD11	1:A:531:TRP:HH2	1.75	0.46
1:D:487:VAL:C	1:D:488:THR:HG23	2.36	0.46
1:C:593:GLY:HA2	2:C:801:B96:C19	2.44	0.46
1:B:491:THR:CB	1:B:492:PRO:HD2	2.45	0.46
1:D:504:VAL:HG13	1:D:505:LEU:H	1.81	0.46
1:B:460:GLY:N	1:B:473:LYS:O	2.49	0.46
1:B:534:GLY:HA3	1:B:584:LEU:O	2.16	0.46
1:C:550:MET:HE3	1:C:684:ASN:HB2	1.98	0.46
1:D:463:ILE:HD11	1:D:531:TRP:HZ3	1.79	0.46
1:B:629:ASP:O	1:B:630:SER:OG	2.28	0.46
1:A:527:ILE:CG2	2:A:801:B96:H32	2.46	0.46
1:A:567:LEU:HD23	1:A:567:LEU:HA	1.76	0.46
2:A:801:B96:H7	2:A:801:B96:H422	1.44	0.46
1:C:547:LYS:O	1:C:547:LYS:HG3	2.16	0.46
1:A:639:VAL:HG13	1:A:710:ILE:HD11	1.98	0.45
1:C:585:HIS:ND1	1:C:586:GLU:CG	2.53	0.45
1:D:639:VAL:HG13	1:D:710:ILE:CD1	2.46	0.45
1:D:709:ARG:HG2	1:D:709:ARG:HH11	1.81	0.45
1:D:639:VAL:HG13	1:D:710:ILE:HD11	1.98	0.45
1:B:482:VAL:HA	1:B:527:ILE:O	2.15	0.45
1:C:700:LYS:HB2	1:C:703:GLU:CD	2.37	0.45
1:D:486:ASN:OD1	1:D:487:VAL:HA	2.16	0.45
1:B:504:VAL:CG1	1:B:505:LEU:N	2.79	0.45
1:B:506:ARG:HG2	1:A:448:ASP:OD1	2.16	0.45
1:A:462:ARG:HG3	1:A:472:TYR:CE2	2.51	0.45
1:A:646:LEU:HB3	1:A:693:MET:HE2	1.99	0.45
1:A:653:GLN:HG3	1:A:654:LEU:O	2.16	0.45
1:C:575:ARG:CG	1:C:575:ARG:NH1	2.34	0.45
1:B:462:ARG:NH2	1:C:698:LYS:HZ3	2.15	0.45
1:A:539:HIS:HA	1:A:543:ALA:HB3	1.99	0.45
1:A:540:HIS:CD2	1:A:584:LEU:HD12	2.51	0.45
1:C:688:ARG:HA	1:C:691:ARG:HH21	1.81	0.45
1:D:568:HIS:CD2	1:D:635:PHE:CD2	3.04	0.45
1:B:491:THR:HB	1:B:492:PRO:HD2	1.99	0.45

Continued on next page...

Continued from previous page...

Atom-1	Atom-2	Interatomic distance (Å)	Clash overlap (Å)
1:A:568:HIS:CD2	1:A:635:PHE:CD2	3.05	0.45
1:D:647:TYR:CZ	1:D:651:THR:HG21	2.52	0.45
1:B:494:GLN:C	1:B:496:GLN:N	2.70	0.45
1:B:536:SER:O	1:B:539:HIS:HB3	2.16	0.45
1:B:664:GLN:HG2	1:B:668:MET:SD	2.57	0.45
2:B:801:B96:N9	2:B:801:B96:C24	2.67	0.45
1:A:483:LYS:O	1:A:526:ALA:HA	2.17	0.45
1:A:687:LYS:O	1:A:691:ARG:HG3	2.17	0.45
1:B:523:PRO:C	1:B:524:GLN:CG	2.85	0.45
1:C:568:HIS:CE1	1:C:707:PHE:HD2	2.35	0.45
1:B:485:LEU:HD22	1:B:494:GLN:HB3	1.98	0.44
1:B:585:HIS:C	1:B:587:ASP:N	2.68	0.44
1:A:550:MET:HE2	1:A:684:ASN:OD1	2.17	0.44
1:D:563:GLY:O	1:D:566:TYR:HB3	2.16	0.44
1:B:595:PHE:N	1:B:595:PHE:HD2	2.15	0.44
1:D:521:THR:O	1:D:524:GLN:O	2.36	0.44
1:C:515:LEU:HB3	1:C:530:GLN:HG2	1.98	0.44
1:D:487:VAL:O	1:D:488:THR:CG2	2.65	0.44
1:D:538:TYR:HB2	1:D:579:SER:HB2	1.98	0.44
1:C:466:GLY:O	1:C:467:SER:HB2	2.17	0.44
1:D:575:ARG:NH2	1:D:602:SER:CB	2.58	0.44
1:D:685:CYS:SG	1:D:689:MET:HG2	2.57	0.44
1:B:483:LYS:HD3	1:B:597:LEU:HD21	2.00	0.44
1:B:554:ILE:O	1:B:557:ALA:HB3	2.17	0.44
1:C:463:ILE:HG22	1:C:471:VAL:CG2	2.48	0.44
1:D:627:MET:O	1:D:629:ASP:O	2.35	0.44
1:A:696:CYS:O	1:A:704:ARG:HD3	2.17	0.44
1:C:700:LYS:O	1:C:703:GLU:HB2	2.18	0.44
1:B:594:ASP:H	2:B:801:B96:C14	2.31	0.44
1:A:559:GLN:O	1:A:562:ARG:HB2	2.18	0.44
1:A:689:MET:O	1:A:692:LEU:N	2.51	0.44
1:C:453:PRO:HG2	1:C:456:GLN:CD	2.38	0.44
1:C:472:TYR:CE1	1:C:484:MET:SD	3.11	0.44
1:C:476:TRP:O	1:C:477:HIS:C	2.56	0.44
1:C:657:SER:OG	1:C:680:LYS:NZ	2.32	0.44
1:C:574:HIS:O	1:C:575:ARG:CB	2.65	0.44
1:B:717:LEU:N	1:B:717:LEU:CD1	2.78	0.43
1:D:617:ILE:HG12	1:D:666:ILE:HG12	2.00	0.43
1:B:642:PHE:CE2	1:B:646:LEU:HD11	2.53	0.43
1:D:450:TRP:HD1	1:D:506:ARG:NH2	2.15	0.43
1:D:487:VAL:HG23	1:D:488:THR:N	2.33	0.43

Continued on next page...

Continued from previous page...

Atom-1	Atom-2	Interatomic distance (Å)	Clash overlap (Å)
1:B:539:HIS:CA	1:B:543:ALA:HB3	2.45	0.43
1:B:629:ASP:C	1:B:630:SER:OG	2.56	0.43
1:A:491:THR:HB	1:A:492:PRO:HD2	1.99	0.43
1:C:618:LEU:HD13	1:C:655:PRO:HD2	2.00	0.43
1:D:463:ILE:HB	1:D:471:VAL:HG23	2.00	0.43
1:D:637:SER:O	1:D:640:TYR:HB3	2.17	0.43
1:B:584:LEU:HD23	1:B:584:LEU:HA	1.83	0.43
1:D:585:HIS:ND1	1:D:586:GLU:HG3	2.33	0.43
1:B:504:VAL:HG11	2:B:801:B96:H20	2.01	0.43
1:D:485:LEU:HD22	1:D:485:LEU:N	2.32	0.43
1:D:515:LEU:O	1:D:529:THR:HB	2.19	0.43
1:D:539:HIS:HA	1:D:543:ALA:HB3	2.00	0.43
1:C:651:THR:HG22	1:C:681:VAL:HA	2.00	0.43
1:C:688:ARG:CG	1:C:691:ARG:HH21	2.24	0.43
1:C:695:GLU:OE1	1:C:698:LYS:NZ	2.45	0.43
1:B:448:ASP:OD2	1:A:506:ARG:HG2	2.19	0.43
1:B:635:PHE:O	1:B:639:VAL:HG23	2.18	0.43
1:B:713:GLU:O	1:B:716:GLU:N	2.51	0.43
1:C:713:GLU:CG	1:C:717:LEU:HD21	2.23	0.43
2:D:801:B96:H7	2:D:801:B96:H422	1.44	0.43
2:D:801:B96:O1	2:D:801:B96:C8	2.67	0.43
1:B:522:LYS:HA	1:B:522:LYS:HD3	1.38	0.43
1:C:457:ILE:HG22	1:C:458:THR:N	2.34	0.43
1:C:488:THR:O	1:C:489:ALA:C	2.58	0.43
1:C:627:MET:HG2	1:C:628:GLN:N	2.34	0.43
1:C:493:GLN:O	1:C:496:GLN:HB2	2.18	0.42
1:C:547:LYS:HB3	1:C:547:LYS:HE3	1.84	0.42
1:D:686:PRO:O	1:D:689:MET:HB3	2.19	0.42
1:D:700:LYS:HD2	1:D:703:GLU:OE2	2.17	0.42
1:B:523:PRO:C	1:B:524:GLN:HG2	2.39	0.42
1:B:540:HIS:HD2	1:B:584:LEU:HD12	1.84	0.42
1:B:671:ARG:NE	1:B:673:SER:CB	2.80	0.42
1:C:509:ARG:CD	1:D:516:PHE:O	2.66	0.42
1:D:503:GLY:O	1:D:507:LYS:HG3	2.19	0.42
1:D:706:SER:O	1:D:709:ARG:N	2.52	0.42
1:A:691:ARG:NH2	1:D:461:GLN:HE22	2.12	0.42
1:B:462:ARG:HH21	1:C:698:LYS:HZ3	1.67	0.42
1:B:485:LEU:HD22	1:B:494:GLN:HG2	2.00	0.42
1:A:539:HIS:CA	1:A:543:ALA:HB3	2.49	0.42
1:C:485:LEU:CD1	1:C:485:LEU:N	2.82	0.42
1:D:631:ASN:N	1:D:632:PRO:CD	2.82	0.42

Continued on next page...

Continued from previous page...

Atom-1	Atom-2	Interatomic distance (Å)	Clash overlap (Å)
1:A:471:VAL:HA	1:A:482:VAL:O	2.19	0.42
1:C:646:LEU:HD23	1:C:646:LEU:HA	1.68	0.42
1:D:468:PHE:HB2	1:D:597:LEU:O	2.19	0.42
1:C:706:SER:HB3	1:C:708:PRO:HD2	2.01	0.42
1:A:659:ILE:N	1:A:659:ILE:HD12	2.35	0.42
1:C:548:PHE:CB	1:C:553:LEU:HD12	2.49	0.42
1:A:486:ASN:ND2	1:A:486:ASN:N	2.67	0.42
1:D:491:THR:CB	1:D:492:PRO:HD2	2.49	0.42
1:B:682:ARG:HH12	1:B:684:ASN:ND2	2.18	0.42
1:C:656:TYR:CE1	1:C:674:LEU:HD22	2.55	0.42
1:B:713:GLU:C	1:B:717:LEU:CD1	2.88	0.41
1:A:466:GLY:HA3	1:A:597:LEU:HB2	2.01	0.41
1:C:484:MET:HE3	1:C:484:MET:HB3	1.76	0.41
1:C:486:ASN:C	1:C:487:VAL:CG2	2.87	0.41
1:B:457:ILE:CG2	1:B:458:THR:N	2.83	0.41
1:B:628:GLN:HB3	1:B:629:ASP:H	1.43	0.41
1:C:507:LYS:HG2	1:D:448:ASP:N	2.34	0.41
1:D:567:LEU:HD23	1:D:567:LEU:HA	1.81	0.41
1:D:585:HIS:C	1:D:587:ASP:N	2.73	0.41
1:B:698:LYS:HB3	1:B:703:GLU:HB3	2.01	0.41
1:A:574:HIS:CE1	2:A:801:B96:H182	2.56	0.41
1:A:598:ALA:C	1:A:599:THR:HG22	2.41	0.41
1:B:459:VAL:HG12	1:B:472:TYR:HB2	2.02	0.41
1:D:476:TRP:O	1:D:477:HIS:C	2.59	0.41
1:D:626:ARG:O	1:D:627:MET:C	2.58	0.41
1:D:709:ARG:HG2	1:D:709:ARG:NH1	2.36	0.41
1:B:494:GLN:HE21	1:B:494:GLN:HB2	1.59	0.41
1:B:642:PHE:CD2	1:B:646:LEU:HD11	2.55	0.41
1:C:448:ASP:HB3	1:D:506:ARG:NE	2.35	0.41
1:C:551:LYS:HE3	1:C:721:LEU:HD12	2.03	0.41
1:C:719:ARG:CG	1:C:720:GLU:N	2.83	0.41
1:D:544:SER:OG	1:D:546:THR:OG1	2.30	0.41
1:D:645:VAL:O	1:D:648:GLU:HB2	2.19	0.41
1:B:631:ASN:N	1:B:632:PRO:CD	2.83	0.41
1:C:585:HIS:ND1	1:C:585:HIS:C	2.74	0.41
1:B:476:TRP:O	1:B:477:HIS:C	2.59	0.41
1:B:617:ILE:CG2	1:B:618:LEU:N	2.83	0.41
1:A:541:LEU:N	1:A:541:LEU:HD23	2.35	0.41
1:C:698:LYS:HD2	1:C:703:GLU:O	2.20	0.41
1:D:504:VAL:CG2	1:D:572:ILE:HD13	2.49	0.41
1:B:568:HIS:CE1	1:B:707:PHE:HD2	2.39	0.41

Continued on next page...

Continued from previous page...

Atom-1	Atom-2	Interatomic distance (Å)	Clash overlap (Å)
1:B:577:LEU:O	1:B:578:LYS:HB3	2.20	0.41
1:B:682:ARG:NH1	1:B:682:ARG:HB2	2.36	0.41
1:A:490:PRO:HA	1:A:494:GLN:OE1	2.21	0.41
1:A:671:ARG:HG2	1:A:671:ARG:O	2.21	0.41
1:A:720:GLU:C	1:A:721:LEU:HG	2.42	0.41
1:D:450:TRP:HE1	1:D:506:ARG:NH1	2.19	0.41
1:B:656:TYR:CE1	1:B:674:LEU:HD22	2.55	0.41
1:A:617:ILE:CG1	1:A:618:LEU:N	2.73	0.41
1:A:643:GLY:O	1:A:646:LEU:HB2	2.20	0.41
1:C:713:GLU:HA	1:C:716:GLU:HG2	2.02	0.41
1:D:698:LYS:HB3	1:D:703:GLU:CB	2.51	0.41
1:B:462:ARG:HH21	1:C:698:LYS:HZ1	1.67	0.40
1:B:450:TRP:HD1	1:B:506:ARG:CZ	2.34	0.40
1:C:505:LEU:HD23	1:C:505:LEU:HA	1.92	0.40
1:C:541:LEU:HA	1:C:541:LEU:HD23	1.82	0.40
1:C:549:GLU:O	1:C:550:MET:C	2.60	0.40
1:D:488:THR:O	1:D:489:ALA:C	2.59	0.40
1:D:643:GLY:C	1:D:697:LEU:HD21	2.41	0.40
1:C:558:ARG:O	1:C:562:ARG:HG3	2.21	0.40
1:C:671:ARG:HG3	1:C:673:SER:H	1.86	0.40
1:B:465:SER:CB	1:B:470:THR:HG23	2.51	0.40
1:A:568:HIS:ND1	1:A:707:PHE:HD2	2.18	0.40
1:A:629:ASP:CG	1:A:630:SER:O	2.60	0.40
1:C:552:LYS:HA	1:C:552:LYS:HD3	1.43	0.40
1:D:578:LYS:O	1:D:582:ILE:HD12	2.21	0.40
1:A:577:LEU:HD23	1:A:577:LEU:HA	1.89	0.40
1:A:692:LEU:HD21	1:A:710:ILE:HG23	2.04	0.40
1:C:558:ARG:NH1	1:C:718:ALA:HB1	2.37	0.40
1:D:501:GLU:HG3	2:D:801:B96:C15	2.51	0.40
1:D:510:HIS:HB3	1:D:513:ILE:HG12	2.03	0.40

All (3) symmetry-related close contacts are listed below. The label for Atom-2 includes the symmetry operator and encoded unit-cell translations to be applied.

Atom-1	Atom-2	Interatomic distance (Å)	Clash overlap (Å)
1:A:461:GLN:OE1	1:D:691:ARG:NH2[1_454]	1.83	0.37
1:B:549:GLU:OE1	1:C:493:GLN:NE2[1_554]	2.05	0.15
1:A:454:ASP:OD2	1:A:547:LYS:NZ[1_455]	2.12	0.08

5.3 Torsion angles [i](#)

5.3.1 Protein backbone [i](#)

In the following table, the Percentiles column shows the percent Ramachandran outliers of the chain as a percentile score with respect to all X-ray entries followed by that with respect to entries of similar resolution.

The Analysed column shows the number of residues for which the backbone conformation was analysed, and the total number of residues.

Mol	Chain	Analysed	Favoured	Allowed	Outliers	Percentiles	
1	A	258/284 (91%)	233 (90%)	24 (9%)	1 (0%)	34	69
1	B	255/284 (90%)	238 (93%)	17 (7%)	0	100	100
1	C	254/284 (89%)	234 (92%)	19 (8%)	1 (0%)	34	69
1	D	258/284 (91%)	232 (90%)	25 (10%)	1 (0%)	34	69
All	All	1025/1136 (90%)	937 (91%)	85 (8%)	3 (0%)	41	73

All (3) Ramachandran outliers are listed below:

Mol	Chain	Res	Type
1	D	600	VAL
1	C	487	VAL
1	A	600	VAL

5.3.2 Protein sidechains [i](#)

In the following table, the Percentiles column shows the percent sidechain outliers of the chain as a percentile score with respect to all X-ray entries followed by that with respect to entries of similar resolution.

The Analysed column shows the number of residues for which the sidechain conformation was analysed, and the total number of residues.

Mol	Chain	Analysed	Rotameric	Outliers	Percentiles	
1	A	231/248 (93%)	196 (85%)	35 (15%)	3	12
1	B	228/248 (92%)	197 (86%)	31 (14%)	3	16
1	C	227/248 (92%)	199 (88%)	28 (12%)	4	19
1	D	231/248 (93%)	211 (91%)	20 (9%)	10	36
All	All	917/992 (92%)	803 (88%)	114 (12%)	4	19

All (114) residues with a non-rotameric sidechain are listed below:

Mol	Chain	Res	Type
1	B	448	ASP
1	B	459	VAL
1	B	463	ILE
1	B	468	PHE
1	B	470	THR
1	B	482	VAL
1	B	487	VAL
1	B	491	THR
1	B	511	VAL
1	B	520	SER
1	B	521	THR
1	B	524	GLN
1	B	541	LEU
1	B	546	THR
1	B	571	SER
1	B	573	ILE
1	B	575	ARG
1	B	588	ASN
1	B	589	THR
1	B	595	PHE
1	B	628	GLN
1	B	630	SER
1	B	631	ASN
1	B	646	LEU
1	B	663	ASP
1	B	666	ILE
1	B	674	LEU
1	B	681	VAL
1	B	684	ASN
1	B	691	ARG
1	B	722	SER
1	A	449	ASP
1	A	459	VAL
1	A	462	ARG
1	A	468	PHE
1	A	482	VAL
1	A	484	MET
1	A	485	LEU
1	A	486	ASN
1	A	491	THR
1	A	504	VAL
1	A	511	VAL
1	A	520	SER

Continued on next page...

Continued from previous page...

Mol	Chain	Res	Type
1	A	522	LYS
1	A	529	THR
1	A	537	LEU
1	A	541	LEU
1	A	546	THR
1	A	575	ARG
1	A	577	LEU
1	A	578	LYS
1	A	585	HIS
1	A	586	GLU
1	A	599	THR
1	A	600	VAL
1	A	616	SER
1	A	617	ILE
1	A	618	LEU
1	A	626	ARG
1	A	659	ILE
1	A	663	ASP
1	A	667	GLU
1	A	674	LEU
1	A	677	ASP
1	A	709	ARG
1	A	717	LEU
1	C	459	VAL
1	C	463	ILE
1	C	468	PHE
1	C	470	THR
1	C	491	THR
1	C	495	LEU
1	C	506	ARG
1	C	511	VAL
1	C	520	SER
1	C	524	GLN
1	C	536	SER
1	C	547	LYS
1	C	549	GLU
1	C	552	LYS
1	C	571	SER
1	C	573	ILE
1	C	575	ARG
1	C	576	ASP
1	C	589	THR

Continued on next page...

Continued from previous page...

Mol	Chain	Res	Type
1	C	616	SER
1	C	631	ASN
1	C	657	SER
1	C	663	ASP
1	C	674	LEU
1	C	675	SER
1	C	681	VAL
1	C	684	ASN
1	C	717	LEU
1	D	449	ASP
1	D	459	VAL
1	D	468	PHE
1	D	482	VAL
1	D	496	GLN
1	D	511	VAL
1	D	529	THR
1	D	544	SER
1	D	545	GLU
1	D	586	GLU
1	D	599	THR
1	D	600	VAL
1	D	602	SER
1	D	627	MET
1	D	630	SER
1	D	674	LEU
1	D	709	ARG
1	D	717	LEU
1	D	720	GLU
1	D	721	LEU

Sometimes sidechains can be flipped to improve hydrogen bonding and reduce clashes. All (14) such sidechains are listed below:

Mol	Chain	Res	Type
1	B	494	GLN
1	A	486	ASN
1	A	585	HIS
1	C	486	ASN
1	C	494	GLN
1	C	512	ASN
1	C	524	GLN
1	C	530	GLN
1	C	539	HIS

Continued on next page...

Continued from previous page...

Mol	Chain	Res	Type
1	C	559	GLN
1	C	585	HIS
1	D	461	GLN
1	D	494	GLN
1	D	585	HIS

5.3.3 RNA [i](#)

There are no RNA molecules in this entry.

5.4 Non-standard residues in protein, DNA, RNA chains [i](#)

There are no non-standard protein/DNA/RNA residues in this entry.

5.5 Carbohydrates [i](#)

There are no monosaccharides in this entry.

5.6 Ligand geometry [i](#)

4 ligands are modelled in this entry.

In the following table, the Counts columns list the number of bonds (or angles) for which Mogul statistics could be retrieved, the number of bonds (or angles) that are observed in the model and the number of bonds (or angles) that are defined in the Chemical Component Dictionary. The Link column lists molecule types, if any, to which the group is linked. The Z score for a bond length (or angle) is the number of standard deviations the observed value is removed from the expected value. A bond length (or angle) with $|Z| > 2$ is considered an outlier worth inspection. RMSZ is the root-mean-square of all Z scores of the bond lengths (or angles).

Mol	Type	Chain	Res	Link	Bond lengths			Bond angles		
					Counts	RMSZ	$\# Z > 2$	Counts	RMSZ	$\# Z > 2$
2	B96	B	801	-	40,43,43	1.44	4 (10%)	51,61,61	1.41	6 (11%)
2	B96	A	801	-	40,43,43	1.54	6 (15%)	51,61,61	1.56	6 (11%)
2	B96	C	801	-	40,43,43	1.44	4 (10%)	51,61,61	1.44	7 (13%)
2	B96	D	801	-	40,43,43	1.46	5 (12%)	51,61,61	1.53	5 (9%)

In the following table, the Chirals column lists the number of chiral outliers, the number of chiral centers analysed, the number of these observed in the model and the number defined in the Chemical Component Dictionary. Similar counts are reported in the Torsion and Rings columns.

'-' means no outliers of that kind were identified.

Mol	Type	Chain	Res	Link	Chirals	Torsions	Rings
2	B96	B	801	-	-	0/18/32/32	0/5/5/5
2	B96	A	801	-	-	0/18/32/32	0/5/5/5
2	B96	C	801	-	-	0/18/32/32	0/5/5/5
2	B96	D	801	-	-	0/18/32/32	0/5/5/5

All (19) bond length outliers are listed below:

Mol	Chain	Res	Type	Atoms	Z	Observed(Å)	Ideal(Å)
2	A	801	B96	C14-C13	-4.39	1.33	1.39
2	C	801	B96	C14-C13	-4.35	1.33	1.39
2	B	801	B96	C14-C13	-4.22	1.33	1.39
2	B	801	B96	C10-N9	-4.08	1.32	1.39
2	D	801	B96	C14-C13	-4.05	1.34	1.39
2	C	801	B96	C10-N9	-4.02	1.32	1.39
2	A	801	B96	C10-N9	-4.00	1.32	1.39
2	D	801	B96	C10-N9	-3.90	1.32	1.39
2	B	801	B96	C25-C22	-3.41	1.39	1.51
2	C	801	B96	C25-C22	-3.37	1.39	1.51
2	D	801	B96	C25-C22	-3.28	1.39	1.51
2	A	801	B96	C25-C22	-3.21	1.39	1.51
2	A	801	B96	C16-C13	2.68	1.56	1.52
2	A	801	B96	C13-N12	-2.60	1.30	1.33
2	C	801	B96	C3-N2	-2.46	1.34	1.41
2	A	801	B96	C3-N2	-2.38	1.35	1.41
2	D	801	B96	C13-N12	-2.35	1.31	1.33
2	B	801	B96	C3-N2	-2.32	1.35	1.41
2	D	801	B96	C3-N2	-2.22	1.35	1.41

All (24) bond angle outliers are listed below:

Mol	Chain	Res	Type	Atoms	Z	Observed(°)	Ideal(°)
2	A	801	B96	C42-O41-C6	-5.23	102.09	117.74
2	C	801	B96	C21-C20-C15	-4.95	117.66	121.79
2	D	801	B96	C42-O41-C6	-4.86	103.22	117.74
2	C	801	B96	C42-O41-C6	-4.63	103.89	117.74
2	B	801	B96	C42-O41-C6	-4.58	104.03	117.74
2	B	801	B96	C21-C20-C15	-4.49	118.04	121.79
2	D	801	B96	C21-C20-C15	-4.40	118.12	121.79
2	A	801	B96	O41-C42-C43	4.27	118.19	107.68
2	D	801	B96	O41-C42-C43	4.20	118.02	107.68
2	A	801	B96	C14-C13-N12	-3.86	105.83	111.41

Continued on next page...

Continued from previous page...

Mol	Chain	Res	Type	Atoms	Z	Observed(°)	Ideal(°)
2	A	801	B96	C21-C20-C15	-3.71	118.69	121.79
2	D	801	B96	C14-C13-N12	-3.68	106.08	111.41
2	B	801	B96	O41-C42-C43	3.26	115.70	107.68
2	C	801	B96	C14-C13-N12	-2.83	107.31	111.41
2	C	801	B96	O41-C42-C43	2.74	114.43	107.68
2	B	801	B96	C14-C13-N12	-2.69	107.51	111.41
2	B	801	B96	C13-C14-C10	-2.49	104.02	106.59
2	C	801	B96	C16-C13-N12	2.31	123.07	120.59
2	D	801	B96	C23-C24-C15	2.28	123.70	121.79
2	C	801	B96	C13-C14-C10	-2.17	104.34	106.59
2	A	801	B96	C16-C13-N12	2.16	122.91	120.59
2	B	801	B96	C16-C13-N12	2.15	122.90	120.59
2	A	801	B96	C34-C5-C6	-2.13	117.67	122.58
2	C	801	B96	C20-C15-C24	2.02	119.31	116.27

There are no chirality outliers.

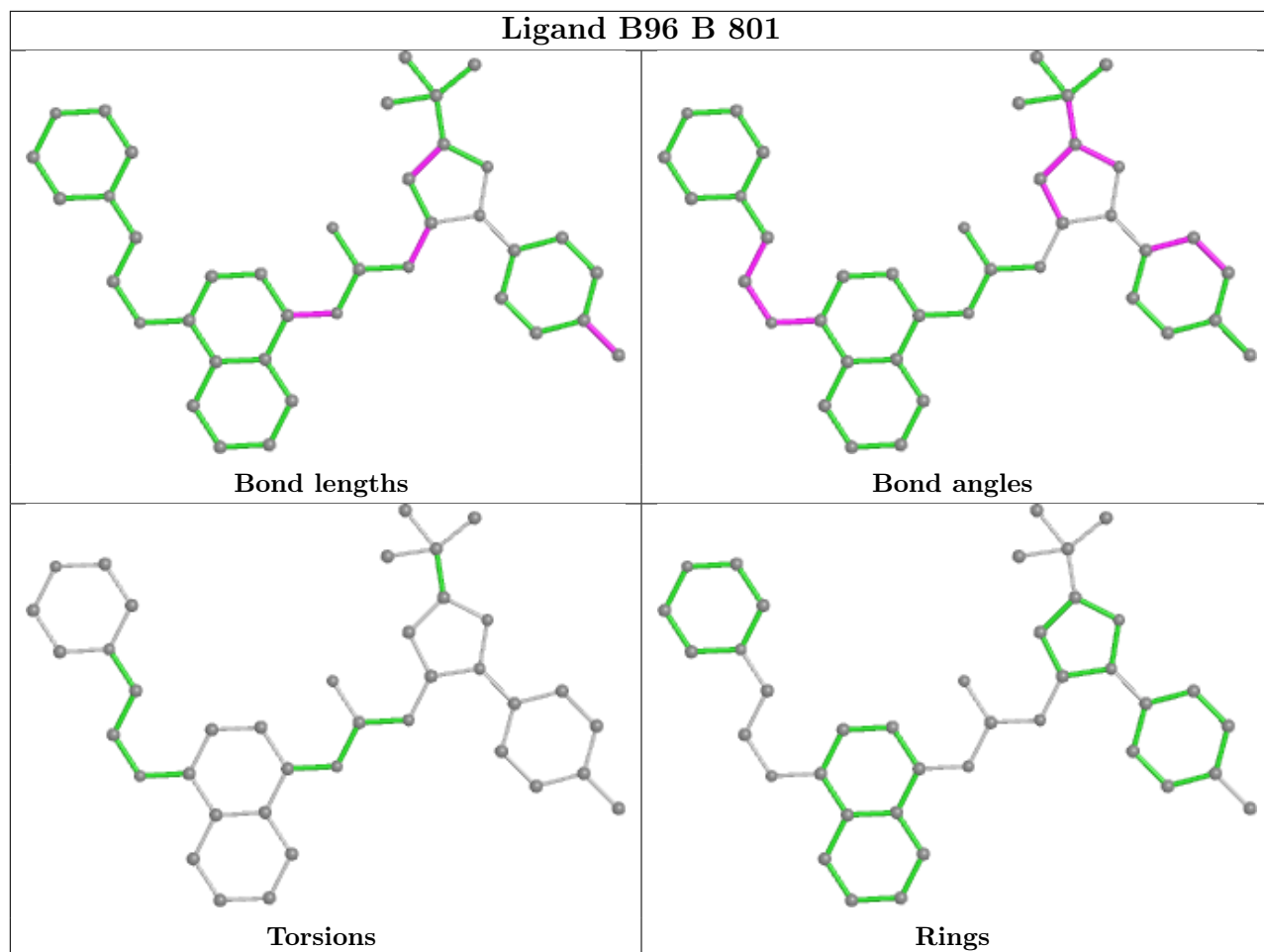
There are no torsion outliers.

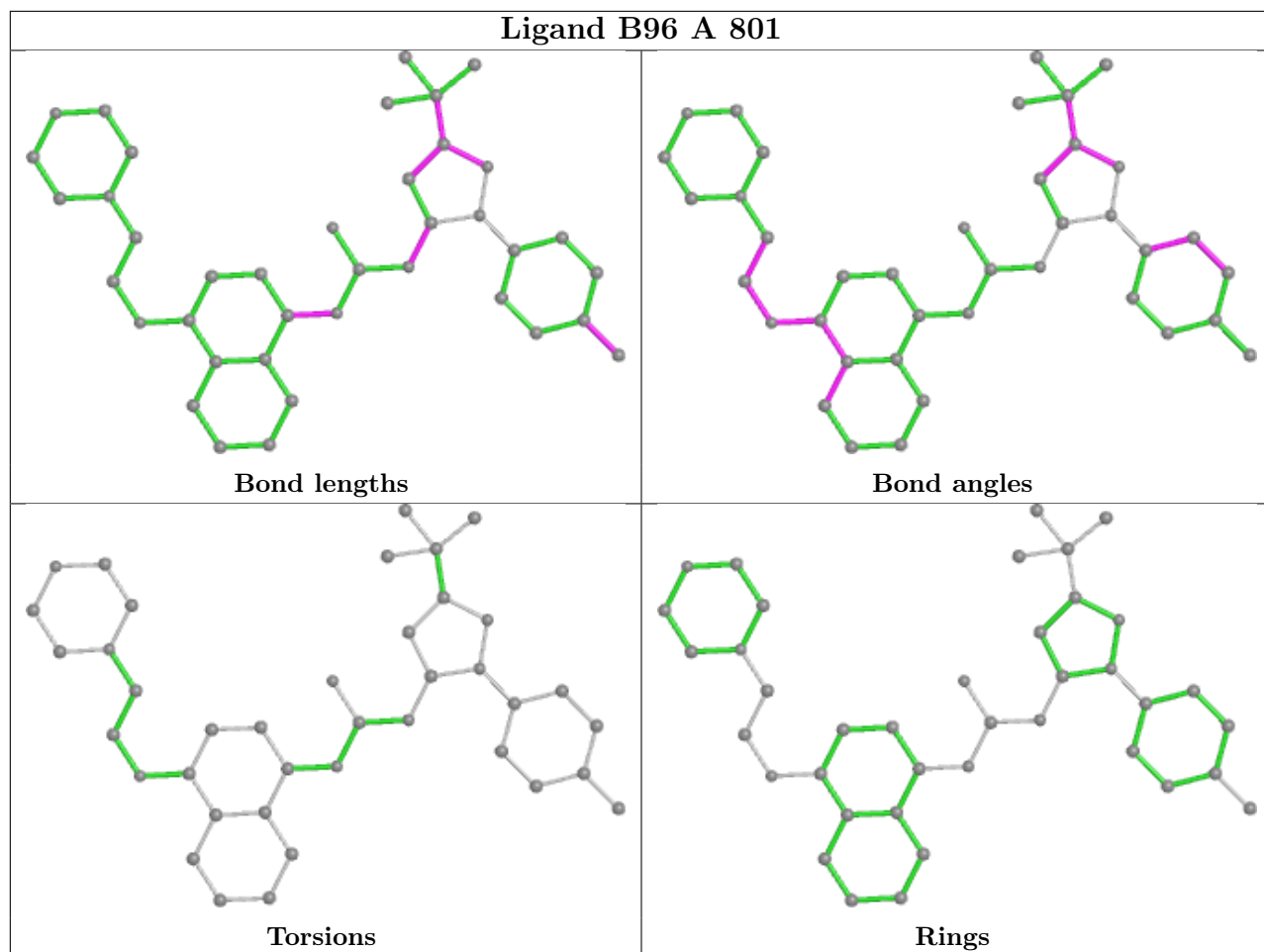
There are no ring outliers.

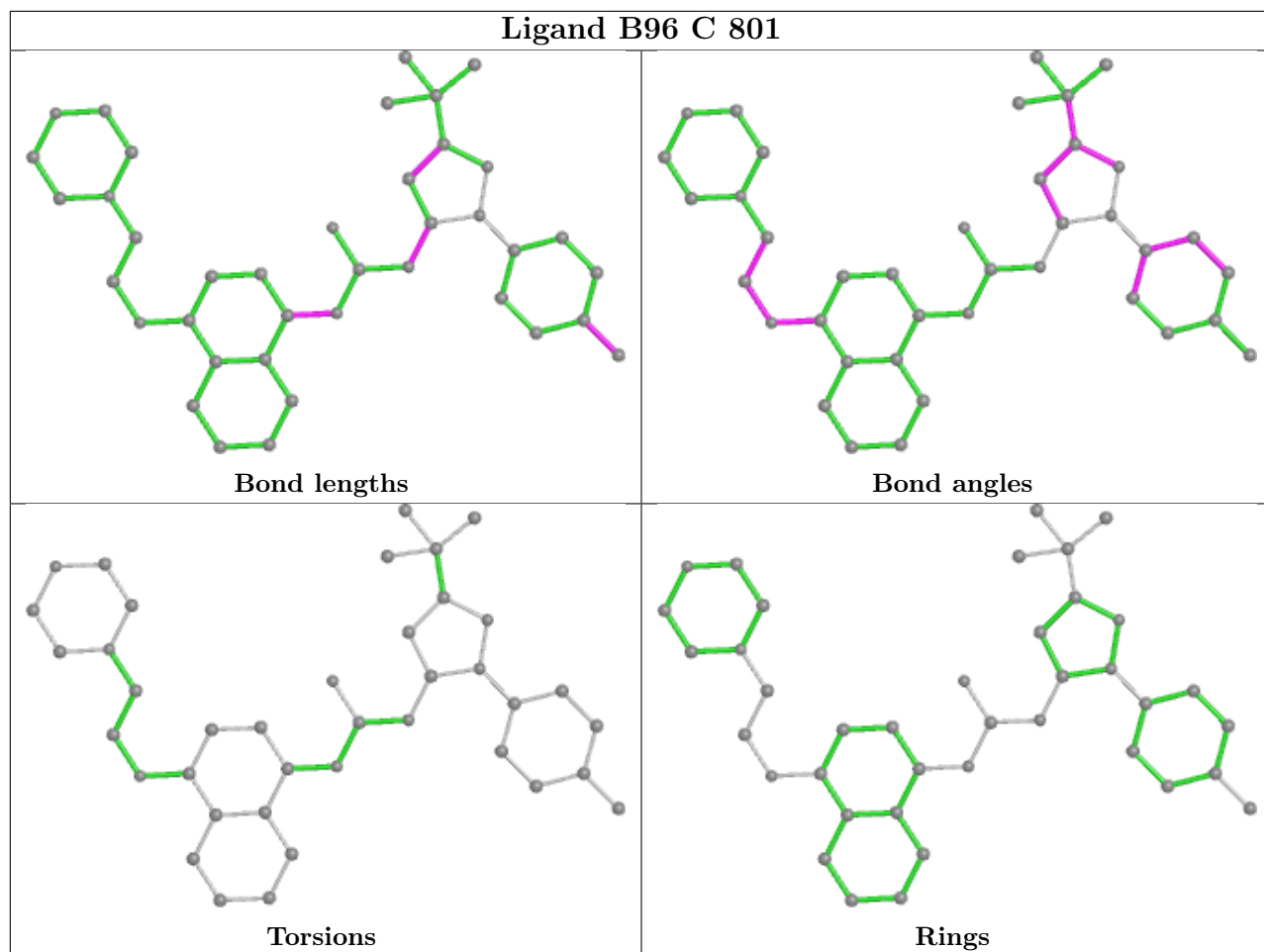
4 monomers are involved in 33 short contacts:

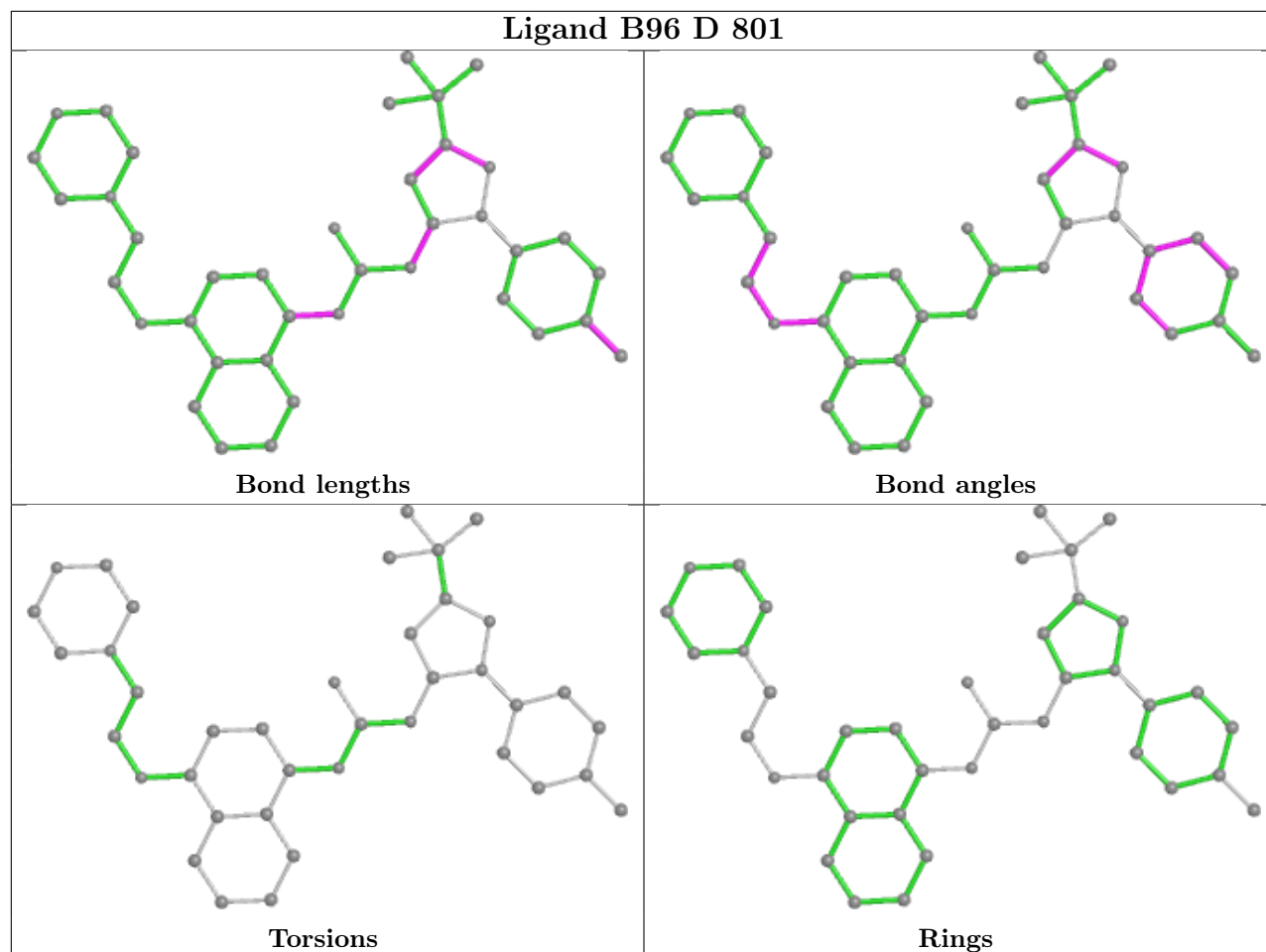
Mol	Chain	Res	Type	Clashes	Symm-Clashes
2	B	801	B96	9	0
2	A	801	B96	9	0
2	C	801	B96	8	0
2	D	801	B96	7	0

The following is a two-dimensional graphical depiction of Mogul quality analysis of bond lengths, bond angles, torsion angles, and ring geometry for all instances of the Ligand of Interest. In addition, ligands with molecular weight > 250 and outliers as shown on the validation Tables will also be included. For torsion angles, if less than 5% of the Mogul distribution of torsion angles is within 10 degrees of the torsion angle in question, then that torsion angle is considered an outlier. Any bond that is central to one or more torsion angles identified as an outlier by Mogul will be highlighted in the graph. For rings, the root-mean-square deviation (RMSD) between the ring in question and similar rings identified by Mogul is calculated over all ring torsion angles. If the average RMSD is greater than 60 degrees and the minimal RMSD between the ring in question and any Mogul-identified rings is also greater than 60 degrees, then that ring is considered an outlier. The outliers are highlighted in purple. The color gray indicates Mogul did not find sufficient equivalents in the CSD to analyse the geometry.









5.7 Other polymers [i](#)

There are no such residues in this entry.

5.8 Polymer linkage issues [i](#)

There are no chain breaks in this entry.

6 Fit of model and data [i](#)

6.1 Protein, DNA and RNA chains [i](#)

In the following table, the column labelled ‘#RSRZ> 2’ contains the number (and percentage) of RSRZ outliers, followed by percent RSRZ outliers for the chain as percentile scores relative to all X-ray entries and entries of similar resolution. The OWAB column contains the minimum, median, 95th percentile and maximum values of the occupancy-weighted average B-factor per residue. The column labelled ‘Q< 0.9’ lists the number of (and percentage) of residues with an average occupancy less than 0.9.

Mol	Chain	Analysed	<RSRZ>	#RSRZ>2	OWAB(Å ²)	Q<0.9
1	A	262/284 (92%)	-0.45	1 (0%) 92 84	30, 69, 111, 126	23 (8%)
1	B	259/284 (91%)	-0.45	0 100 100	27, 63, 105, 146	36 (13%)
1	C	258/284 (90%)	-0.33	2 (0%) 86 72	44, 67, 121, 168	3 (1%)
1	D	262/284 (92%)	-0.48	1 (0%) 92 84	33, 70, 116, 165	18 (6%)
All	All	1041/1136 (91%)	-0.43	4 (0%) 92 84	27, 68, 114, 168	80 (7%)

All (4) RSRZ outliers are listed below:

Mol	Chain	Res	Type	RSRZ
1	A	671	ARG	3.8
1	C	545	GLU	3.8
1	D	671	ARG	3.8
1	C	630	SER	3.4

6.2 Non-standard residues in protein, DNA, RNA chains [i](#)

There are no non-standard protein/DNA/RNA residues in this entry.

6.3 Carbohydrates [i](#)

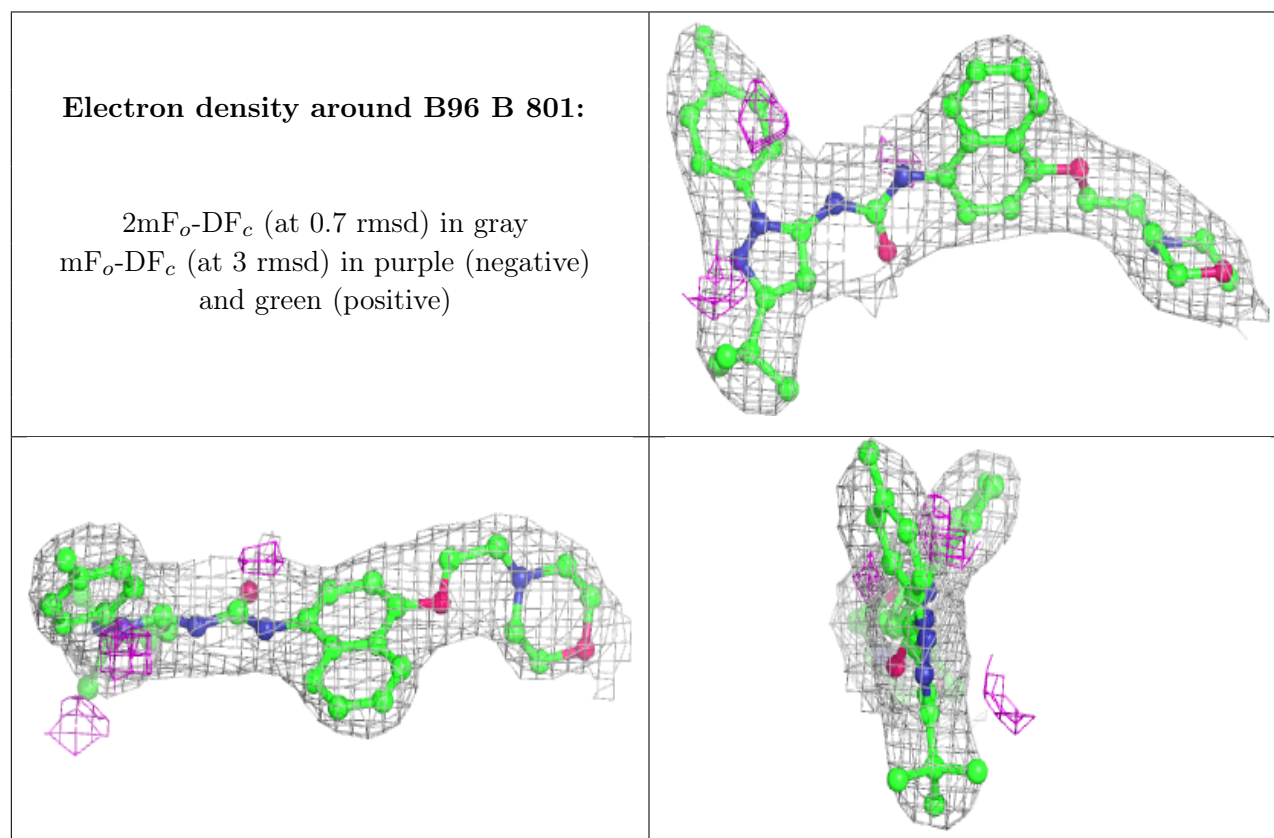
There are no monosaccharides in this entry.

6.4 Ligands [i](#)

In the following table, the Atoms column lists the number of modelled atoms in the group and the number defined in the chemical component dictionary. The B-factors column lists the minimum, median, 95th percentile and maximum values of B factors of atoms in the group. The column labelled ‘Q< 0.9’ lists the number of atoms with occupancy less than 0.9.

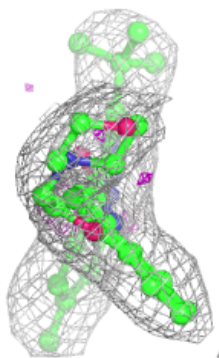
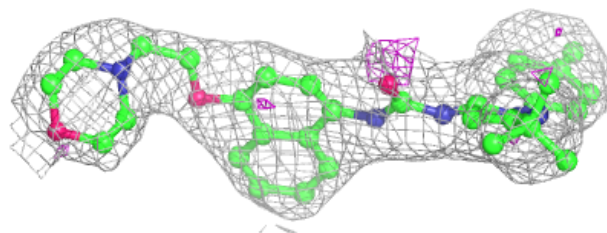
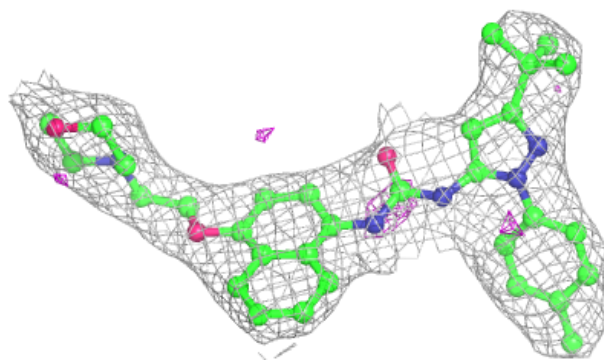
Mol	Type	Chain	Res	Atoms	RSCC	RSR	B-factors(\AA^2)	Q<0.9
2	B96	B	801	39/39	0.96	0.21	33,48,59,62	0
2	B96	A	801	39/39	0.96	0.20	27,50,56,58	0
2	B96	D	801	39/39	0.96	0.21	34,49,55,60	0
2	B96	C	801	39/39	0.97	0.21	36,45,58,61	0

The following is a graphical depiction of the model fit to experimental electron density of all instances of the Ligand of Interest. In addition, ligands with molecular weight > 250 and outliers as shown on the geometry validation Tables will also be included. Each fit is shown from different orientation to approximate a three-dimensional view.

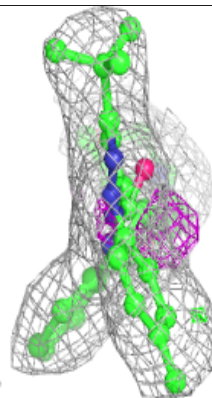
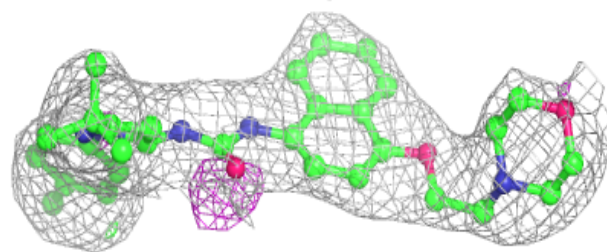
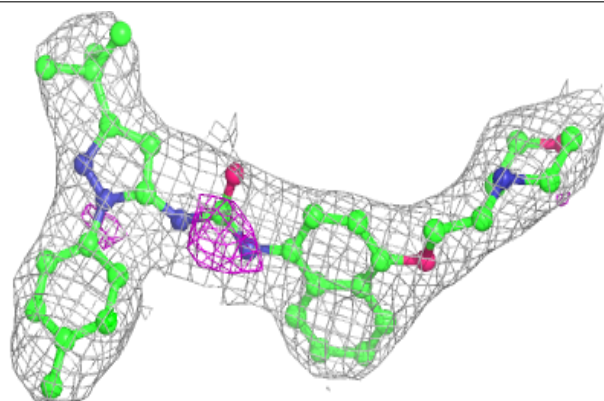


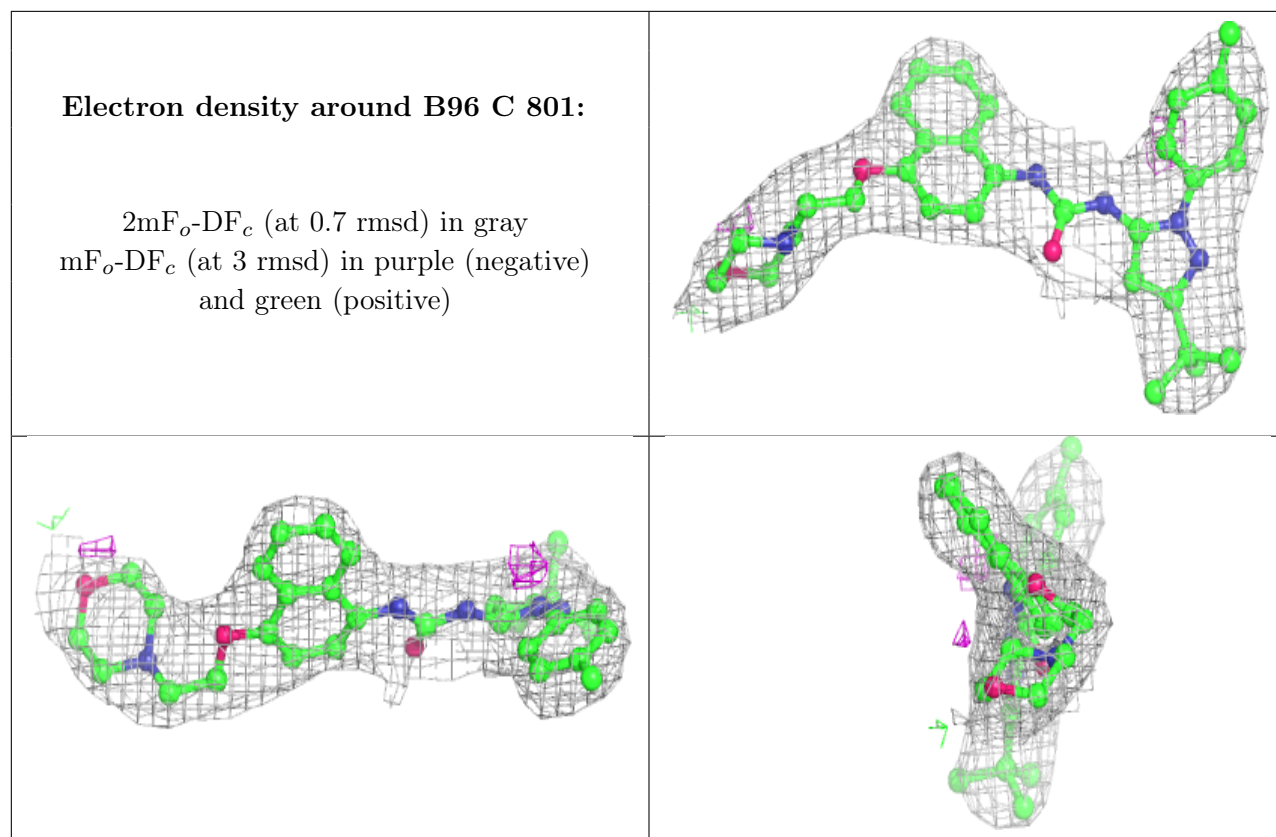
Electron density around B96 A 801:

$2mF_o-DF_c$ (at 0.7 rmsd) in gray
 mF_o-DF_c (at 3 rmsd) in purple (negative)
and green (positive)

**Electron density around B96 D 801:**

$2mF_o-DF_c$ (at 0.7 rmsd) in gray
 mF_o-DF_c (at 3 rmsd) in purple (negative)
and green (positive)





6.5 Other polymers [i](#)

There are no such residues in this entry.