



# Full wwPDB X-ray Structure Validation Report ⓘ

Aug 6, 2023 – 07:41 PM EDT

PDB ID : 1JWH  
Title : Crystal Structure of Human Protein Kinase CK2 Holoenzyme  
Authors : Niefind, K.; Guerra, B.; Ermakowa, I.; Issinger, O.G.  
Deposited on : 2001-09-04  
Resolution : 3.10 Å(reported)

This is a Full wwPDB X-ray Structure Validation Report for a publicly released PDB entry.

We welcome your comments at [validation@mail.wwpdb.org](mailto:validation@mail.wwpdb.org)

A user guide is available at

<https://www.wwpdb.org/validation/2017/XrayValidationReportHelp>

with specific help available everywhere you see the ⓘ symbol.

The types of validation reports are described at

<http://www.wwpdb.org/validation/2017/FAQs#types>.

---

The following versions of software and data (see [references ⓘ](#)) were used in the production of this report:

MolProbity : 4.02b-467  
Mogul : 1.8.5 (274361), CSD as541be (2020)  
Xtriage (Phenix) : 1.13  
EDS : 2.35  
buster-report : 1.1.7 (2018)  
Percentile statistics : 20191225.v01 (using entries in the PDB archive December 25th 2019)  
Refmac : 5.8.0158  
CCP4 : 7.0.044 (Gargrove)  
Ideal geometry (proteins) : Engh & Huber (2001)  
Ideal geometry (DNA, RNA) : Parkinson et al. (1996)  
Validation Pipeline (wwPDB-VP) : 2.35

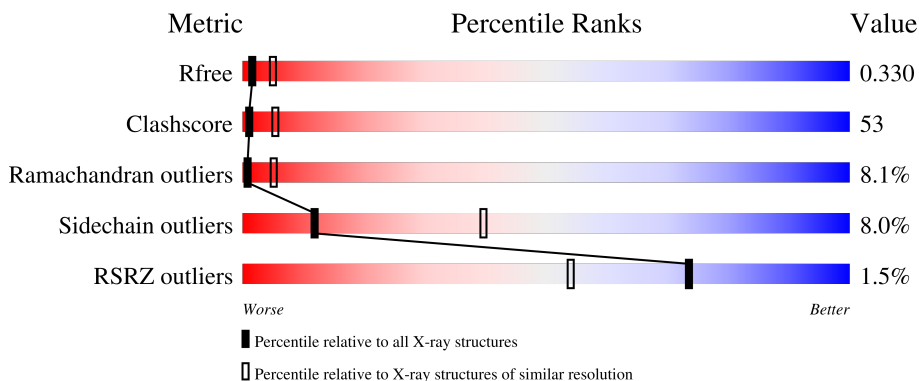
# 1 Overall quality at a glance

The following experimental techniques were used to determine the structure:

*X-RAY DIFFRACTION*

The reported resolution of this entry is 3.10 Å.

Percentile scores (ranging between 0-100) for global validation metrics of the entry are shown in the following graphic. The table shows the number of entries on which the scores are based.



Metric	Whole archive (#Entries)	Similar resolution (#Entries, resolution range(Å))
$R_{free}$	130704	1094 (3.10-3.10)
Clashscore	141614	1184 (3.10-3.10)
Ramachandran outliers	138981	1141 (3.10-3.10)
Sidechain outliers	138945	1141 (3.10-3.10)
RSRZ outliers	127900	1067 (3.10-3.10)

The table below summarises the geometric issues observed across the polymeric chains and their fit to the electron density. The red, orange, yellow and green segments of the lower bar indicate the fraction of residues that contain outliers for  $\geq 3$ , 2, 1 and 0 types of geometric quality criteria respectively. A grey segment represents the fraction of residues that are not modelled. The numeric value for each fraction is indicated below the corresponding segment, with a dot representing fractions  $\leq 5\%$ . The upper red bar (where present) indicates the fraction of residues that have poor fit to the electron density. The numeric value is given above the bar.

Mol	Chain	Length	Quality of chain
1	A	337	 28% 63% 9%
1	B	337	 28% 62% 10%
2	C	215	 4% 30% 52% 10% 7%
2	D	215	 26% 53% 14% 5%

## 2 Entry composition [i](#)

There are 6 unique types of molecules in this entry. The entry contains 9221 atoms, of which 0 are hydrogens and 0 are deuteriums.

In the tables below, the ZeroOcc column contains the number of atoms modelled with zero occupancy, the AltConf column contains the number of residues with at least one atom in alternate conformation and the Trace column contains the number of residues modelled with at most 2 atoms.

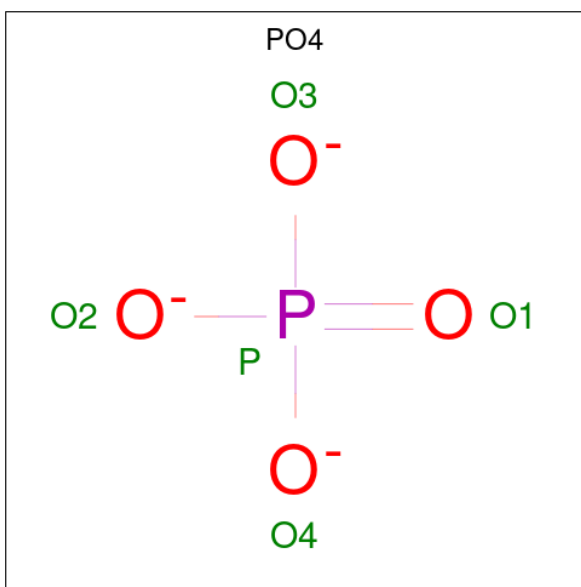
- Molecule 1 is a protein called Casein kinase II, alpha chain.

Mol	Chain	Residues	Atoms					ZeroOcc	AltConf	Trace
			Total	C	N	O	S			
1	A	336	Total 2829	C 1808	N 499	O 510	S 12	0	0	0
1	B	335	Total 2822	C 1805	N 498	O 507	S 12	0	0	0

- Molecule 2 is a protein called Casein kinase II beta chain.

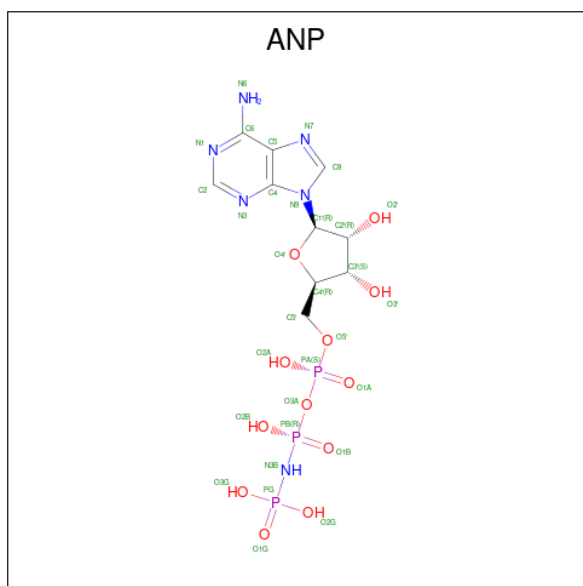
Mol	Chain	Residues	Atoms					ZeroOcc	AltConf	Trace
			Total	C	N	O	S			
2	C	200	Total 1633	C 1045	N 273	O 300	S 15	0	0	0
2	D	204	Total 1660	C 1059	N 277	O 309	S 15	0	0	0

- Molecule 3 is PHOSPHATE ION (three-letter code: PO4) (formula: O<sub>4</sub>P).



Mol	Chain	Residues	Atoms			ZeroOcc	AltConf
3	A	1	Total	O	P	0	0
			5	4	1		
3	B	1	Total	O	P	0	0
			5	4	1		
3	B	1	Total	O	P	0	0
			5	4	1		
3	C	1	Total	O	P	0	0
			5	4	1		
3	D	1	Total	O	P	0	0
			5	4	1		
3	D	1	Total	O	P	0	0
			5	4	1		
3	D	1	Total	O	P	0	0
			5	4	1		

- Molecule 4 is PHOSPHOAMINOPHOSPHONIC ACID-ADENYLATE ESTER (three-letter code: ANP) (formula: C<sub>10</sub>H<sub>17</sub>N<sub>6</sub>O<sub>12</sub>P<sub>3</sub>).



Mol	Chain	Residues	Atoms					ZeroOcc	AltConf
4	A	1	Total	C	N	O	P	0	0
			31	10	6	12	3		

- Molecule 5 is ZINC ION (three-letter code: ZN) (formula: Zn).

Mol	Chain	Residues	Atoms		ZeroOcc	AltConf
5	C	1	Total	Zn	0	0
			1	1		

*Continued on next page...*

*Continued from previous page...*

Mol	Chain	Residues	Atoms		ZeroOcc	AltConf
5	D	1	Total	Zn	0	0
			1	1		

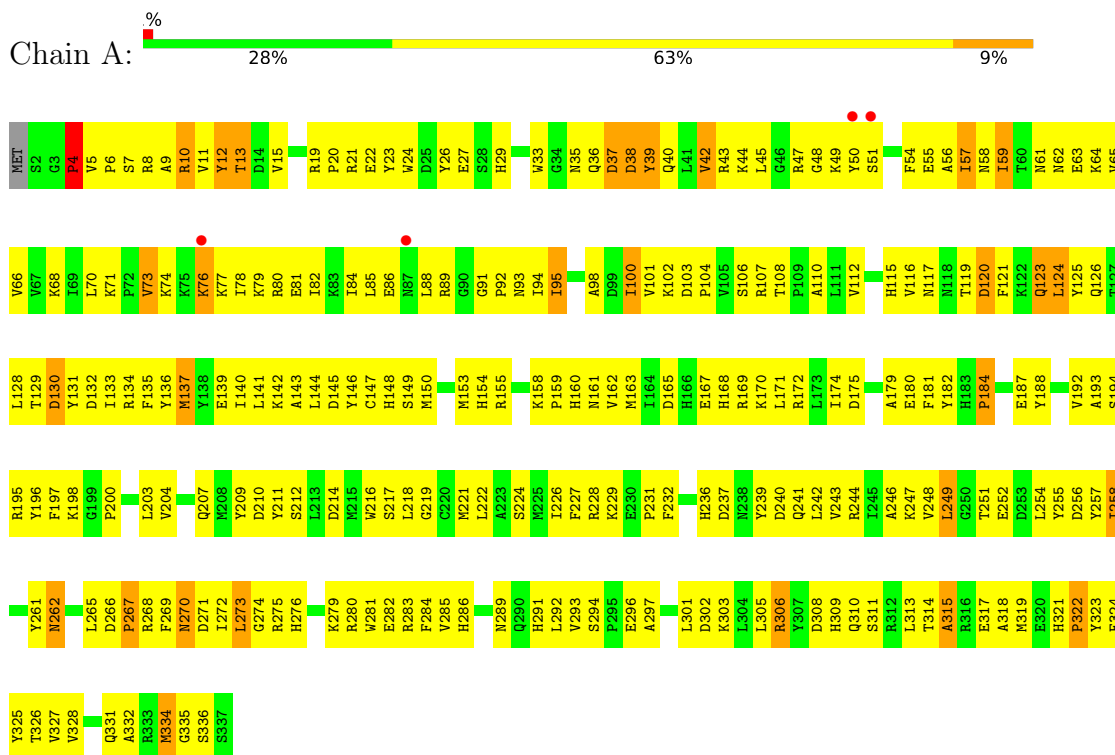
- Molecule 6 is water.

Mol	Chain	Residues	Atoms		ZeroOcc	AltConf
6	A	81	Total	O	0	0
			81	81		
6	B	74	Total	O	0	0
			74	74		
6	C	27	Total	O	0	0
			27	27		
6	D	27	Total	O	0	0
			27	27		

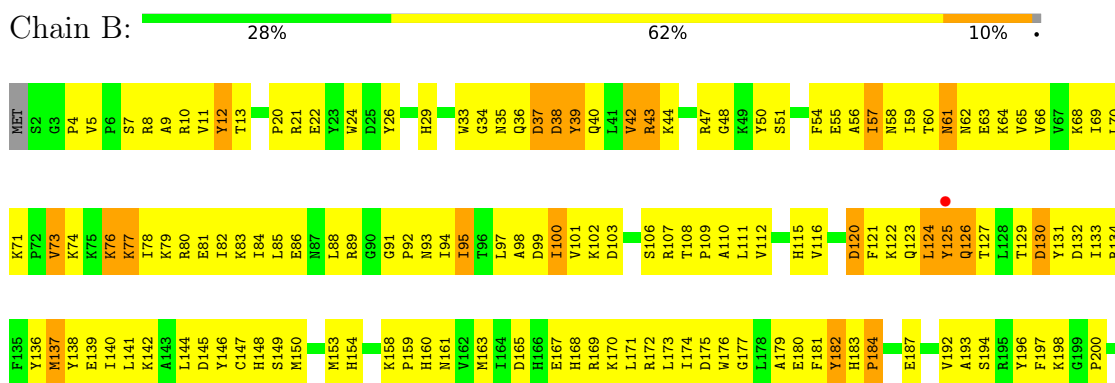
### 3 Residue-property plots i

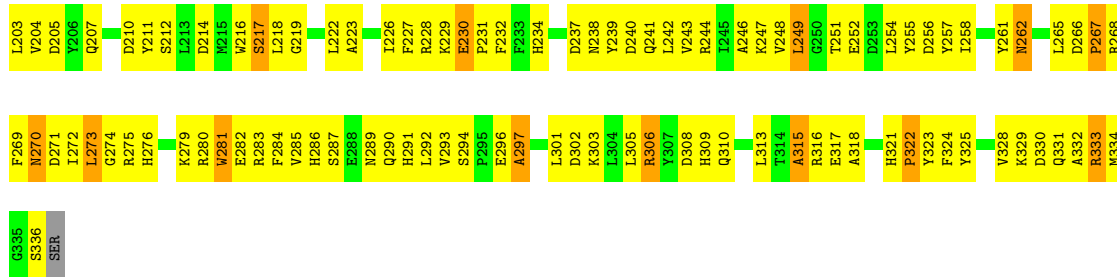
These plots are drawn for all protein, RNA, DNA and oligosaccharide chains in the entry. The first graphic for a chain summarises the proportions of the various outlier classes displayed in the second graphic. The second graphic shows the sequence view annotated by issues in geometry and electron density. Residues are color-coded according to the number of geometric quality criteria for which they contain at least one outlier: green = 0, yellow = 1, orange = 2 and red = 3 or more. A red dot above a residue indicates a poor fit to the electron density ( $RSRZ > 2$ ). Stretches of 2 or more consecutive residues without any outlier are shown as a green connector. Residues present in the sample, but not in the model, are shown in grey.

- Molecule 1: Casein kinase II, alpha chain

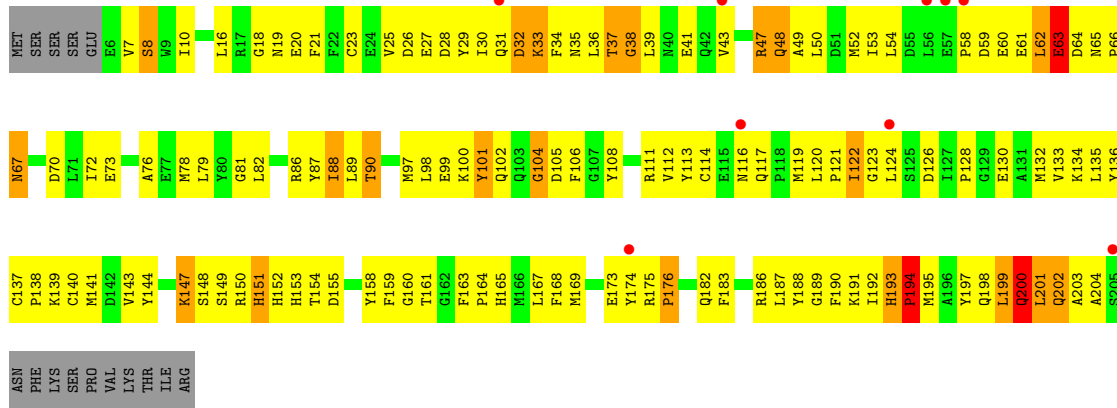


- Molecule 1: Casein kinase II, alpha chain

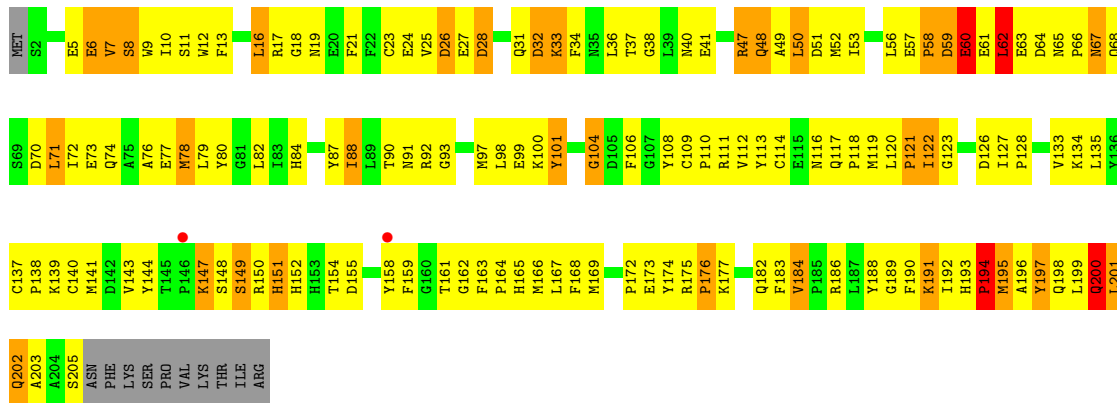




• Molecule 2: Casein kinase II beta chain



• Molecule 2: Casein kinase II beta chain



## 4 Data and refinement statistics i

Property	Value	Source
Space group	P 63	Depositor
Cell constants a, b, c, $\alpha$ , $\beta$ , $\gamma$	175.99Å 175.99Å 93.67Å 90.00° 90.00° 120.00°	Depositor
Resolution (Å)	59.30 – 3.10 59.11 – 3.09	Depositor EDS
% Data completeness (in resolution range)	78.7 (59.30-3.10) 78.0 (59.11-3.09)	Depositor EDS
$R_{merge}$	(Not available)	Depositor
$R_{sym}$	0.10	Depositor
$\langle I/\sigma(I) \rangle$ <sup>1</sup>	0.47 (at 3.07Å)	Xtrriage
Refinement program	CNS 1.0	Depositor
R, $R_{free}$	0.267 , 0.338 0.245 , 0.330	Depositor DCC
$R_{free}$ test set	935 reflections (3.12%)	wwPDB-VP
Wilson B-factor (Å <sup>2</sup> )	67.7	Xtrriage
Anisotropy	0.319	Xtrriage
Bulk solvent $k_{sol}$ (e/Å <sup>3</sup> ), $B_{sol}$ (Å <sup>2</sup> )	0.25 , 69.5	EDS
L-test for twinning <sup>2</sup>	$\langle  L  \rangle = 0.50$ , $\langle L^2 \rangle = 0.34$	Xtrriage
Estimated twinning fraction	0.035 for h,-h-k,-l	Xtrriage
$F_o, F_c$ correlation	0.90	EDS
Total number of atoms	9221	wwPDB-VP
Average B, all atoms (Å <sup>2</sup> )	90.0	wwPDB-VP

Xtrriage's analysis on translational NCS is as follows: *The largest off-origin peak in the Patterson function is 3.89% of the height of the origin peak. No significant pseudotranslation is detected.*

<sup>1</sup>Intensities estimated from amplitudes.

<sup>2</sup>Theoretical values of  $\langle |L| \rangle$ ,  $\langle L^2 \rangle$  for acentric reflections are 0.5, 0.333 respectively for untwinned datasets, and 0.375, 0.2 for perfectly twinned datasets.



## 5 Model quality [i](#)

### 5.1 Standard geometry [i](#)

Bond lengths and bond angles in the following residue types are not validated in this section: PO4, ANP, ZN

The Z score for a bond length (or angle) is the number of standard deviations the observed value is removed from the expected value. A bond length (or angle) with  $|Z| > 5$  is considered an outlier worth inspection. RMSZ is the root-mean-square of all Z scores of the bond lengths (or angles).

Mol	Chain	Bond lengths		Bond angles	
		RMSZ	# Z  >5	RMSZ	# Z  >5
1	A	0.46	0/2904	0.71	0/3924
1	B	0.46	0/2897	0.71	0/3916
2	C	0.41	0/1682	0.72	2/2281 (0.1%)
2	D	0.44	0/1709	0.71	2/2317 (0.1%)
All	All	0.45	0/9192	0.71	4/12438 (0.0%)

Chiral center outliers are detected by calculating the chiral volume of a chiral center and verifying if the center is modelled as a planar moiety or with the opposite hand. A planarity outlier is detected by checking planarity of atoms in a peptide group, atoms in a mainchain group or atoms of a sidechain that are expected to be planar.

Mol	Chain	#Chirality outliers	#Planarity outliers
1	B	0	1

There are no bond length outliers.

All (4) bond angle outliers are listed below:

Mol	Chain	Res	Type	Atoms	Z	Observed( $^{\circ}$ )	Ideal( $^{\circ}$ )
2	C	60	GLU	N-CA-C	10.26	138.70	111.00
2	D	60	GLU	N-CA-C	9.16	135.73	111.00
2	C	60	GLU	CB-CA-C	-8.42	93.56	110.40
2	D	60	GLU	CB-CA-C	-5.74	98.91	110.40

There are no chirality outliers.

All (1) planarity outliers are listed below:

Mol	Chain	Res	Type	Group
1	B	182	TYR	Sidechain

## 5.2 Too-close contacts [i](#)

In the following table, the Non-H and H(model) columns list the number of non-hydrogen atoms and hydrogen atoms in the chain respectively. The H(added) column lists the number of hydrogen atoms added and optimized by MolProbity. The Clashes column lists the number of clashes within the asymmetric unit, whereas Symm-Clashes lists symmetry-related clashes.

Mol	Chain	Non-H	H(model)	H(added)	Clashes	Symm-Clashes
1	A	2829	0	2770	306	0
1	B	2822	0	2765	288	0
2	C	1633	0	1548	177	0
2	D	1660	0	1568	205	0
3	A	5	0	0	0	0
3	B	10	0	0	0	0
3	C	5	0	0	0	0
3	D	15	0	0	0	0
4	A	31	0	13	1	0
5	C	1	0	0	0	0
5	D	1	0	0	0	0
6	A	81	0	0	6	0
6	B	74	0	0	9	0
6	C	27	0	0	3	0
6	D	27	0	0	5	0
All	All	9221	0	8664	939	0

The all-atom clashscore is defined as the number of clashes found per 1000 atoms (including hydrogen atoms). The all-atom clashscore for this structure is 53.

All (939) close contacts within the same asymmetric unit are listed below, sorted by their clash magnitude.

Atom-1	Atom-2	Interatomic distance (Å)	Clash overlap (Å)
2:C:111:ARG:HH21	2:C:113:TYR:HB2	1.10	1.12
1:B:24:TRP:HA	1:B:181:PHE:CE2	1.86	1.10
1:B:43:ARG:HB3	1:B:43:ARG:HH11	1.00	1.10
1:B:24:TRP:HA	1:B:181:PHE:HE2	1.05	1.09
2:D:59:ASP:O	2:D:62:LEU:HD23	1.55	1.06
2:D:111:ARG:HH21	2:D:113:TYR:HB2	1.21	1.05
2:C:195:MET:HB2	2:C:198:GLN:HG3	1.39	1.05
2:D:82:LEU:H	2:D:82:LEU:HD12	1.23	1.02
2:C:59:ASP:O	2:C:62:LEU:HD23	1.63	0.98
2:C:199:LEU:HD12	2:C:199:LEU:H	1.26	0.98
1:B:43:ARG:HB3	1:B:43:ARG:NH1	1.79	0.97
1:A:279:LYS:H	1:A:279:LYS:HD2	1.32	0.95

*Continued on next page...*

*Continued from previous page...*

Atom-1	Atom-2	Interatomic distance (Å)	Clash overlap (Å)
2:D:128:PRO:HA	2:D:155:ASP:OD2	1.65	0.95
1:B:279:LYS:H	1:B:279:LYS:HD2	1.28	0.95
2:D:7:VAL:HB	2:D:11:SER:OG	1.67	0.94
1:B:21:ARG:HA	1:B:24:TRP:HE1	1.32	0.94
2:C:187:LEU:HD13	2:D:162:GLY:HA3	1.51	0.92
1:A:303:LYS:HB3	1:A:313:LEU:HD21	1.51	0.92
2:C:16:LEU:HB2	2:C:19:ASN:HD22	1.36	0.91
2:D:199:LEU:HD12	2:D:199:LEU:H	1.35	0.91
2:C:32:ASP:OD1	2:C:34:PHE:HB3	1.72	0.90
2:D:122:ILE:HG12	2:D:123:GLY:N	1.83	0.89
1:A:36:GLN:NE2	2:D:189:GLY:HA3	1.86	0.89
1:B:192:VAL:O	1:B:198:LYS:HE2	1.70	0.89
1:B:129:THR:HG22	1:B:132:ASP:OD2	1.73	0.89
1:A:137:MET:CE	1:A:218:LEU:HD21	2.03	0.88
2:C:128:PRO:HA	2:C:155:ASP:OD2	1.71	0.88
2:C:10:ILE:HD12	2:C:10:ILE:H	1.37	0.88
1:A:24:TRP:HA	1:A:181:PHE:HE2	1.36	0.88
1:A:192:VAL:O	1:A:198:LYS:HE2	1.74	0.88
1:B:26:TYR:CE2	1:B:80:ARG:HB2	2.08	0.88
1:A:180:GLU:HG3	1:A:181:PHE:H	1.39	0.87
1:A:21:ARG:HA	1:A:24:TRP:HE1	1.40	0.87
1:A:40:GLN:HB2	2:D:191:LYS:O	1.75	0.87
1:A:57:ILE:HD11	1:A:62:ASN:HA	1.57	0.86
1:B:137:MET:HE3	1:B:140:ILE:HD12	1.55	0.86
2:D:111:ARG:HH21	2:D:113:TYR:CB	1.89	0.86
1:A:137:MET:HE3	1:A:140:ILE:HD12	1.56	0.86
2:C:173:GLU:HG2	2:C:174:TYR:HD1	1.39	0.85
1:A:35:ASN:O	1:A:38:ASP:HB2	1.77	0.85
1:B:180:GLU:HG3	1:B:181:PHE:H	1.39	0.85
1:A:239:TYR:O	1:A:243:VAL:HG23	1.77	0.85
1:B:239:TYR:O	1:B:243:VAL:HG23	1.76	0.84
1:B:229:LYS:HD3	1:B:232:PHE:CD1	2.12	0.84
2:C:199:LEU:H	2:C:199:LEU:CD1	1.90	0.84
1:B:187:GLU:HA	1:B:207:GLN:O	1.76	0.84
2:C:65:ASN:HB3	2:C:66:PRO:HD3	1.60	0.83
2:C:111:ARG:NH2	2:C:113:TYR:HB2	1.91	0.83
2:D:65:ASN:HB3	2:D:66:PRO:HD3	1.60	0.83
1:B:269:PHE:HA	1:B:272:ILE:HG12	1.61	0.83
1:B:203:LEU:HD13	1:B:242:LEU:HB2	1.62	0.82
1:A:129:THR:HG22	1:A:132:ASP:OD2	1.79	0.82
1:B:120:ASP:OD2	1:B:121:PHE:N	2.12	0.82

*Continued on next page...*

*Continued from previous page...*

Atom-1	Atom-2	Interatomic distance (Å)	Clash overlap (Å)
1:A:26:TYR:CE2	1:A:80:ARG:HB2	2.15	0.82
1:B:88:LEU:HB3	1:B:94:ILE:HG21	1.60	0.82
2:C:82:LEU:HD12	2:C:82:LEU:H	1.43	0.81
1:A:8:ARG:NH1	1:A:184:PRO:HB3	1.95	0.81
1:A:35:ASN:HD21	1:A:37:ASP:HB2	1.43	0.81
2:D:7:VAL:HG11	2:D:11:SER:HB3	1.62	0.81
1:A:73:VAL:HG12	1:A:74:LYS:H	1.46	0.80
1:A:269:PHE:HA	1:A:272:ILE:HG12	1.62	0.80
1:B:73:VAL:HG12	1:B:74:LYS:H	1.44	0.80
1:B:116:VAL:HG11	1:B:163:MET:HB3	1.64	0.80
1:A:100:ILE:HD12	1:A:100:ILE:H	1.45	0.79
1:A:42:VAL:HG12	1:A:43:ARG:N	1.97	0.79
1:A:285:VAL:HG12	1:A:293:VAL:HG21	1.64	0.79
1:A:36:GLN:HE21	2:D:189:GLY:HA3	1.47	0.79
1:B:285:VAL:HG12	1:B:293:VAL:HG21	1.64	0.79
1:B:136:TYR:HD1	1:B:171:LEU:HD12	1.48	0.78
2:C:111:ARG:HH21	2:C:113:TYR:CB	1.95	0.78
2:D:7:VAL:CG1	2:D:11:SER:HB3	2.13	0.78
1:A:137:MET:HE1	1:A:218:LEU:HD21	1.66	0.78
2:D:194:PRO:O	2:D:197:TYR:HE1	1.66	0.78
2:D:7:VAL:HG12	2:D:8:SER:H	1.48	0.78
2:D:101:TYR:HD2	2:D:120:LEU:HD11	1.49	0.78
1:B:137:MET:CE	1:B:218:LEU:HD21	2.13	0.78
1:B:325:TYR:O	1:B:329:LYS:HG3	1.82	0.78
1:A:203:LEU:HD13	1:A:242:LEU:HB2	1.66	0.77
1:A:248:VAL:HA	1:A:279:LYS:HD3	1.64	0.77
1:B:57:ILE:HD11	1:B:62:ASN:HA	1.65	0.77
2:D:195:MET:HB2	2:D:198:GLN:HG3	1.67	0.77
1:B:248:VAL:HA	1:B:279:LYS:HD3	1.65	0.76
2:C:175:ARG:HD3	2:C:176:PRO:HD2	1.67	0.76
1:B:100:ILE:HD12	1:B:100:ILE:H	1.49	0.76
2:C:199:LEU:HD12	2:C:199:LEU:N	1.99	0.76
1:A:123:GLN:HA	1:A:126:GLN:NE2	2.00	0.76
1:B:21:ARG:HA	1:B:24:TRP:NE1	1.99	0.76
2:D:32:ASP:OD1	2:D:34:PHE:HB3	1.86	0.76
1:A:42:VAL:HB	1:A:55:GLU:O	1.86	0.76
2:C:122:ILE:HG12	2:C:123:GLY:N	2.01	0.76
1:A:116:VAL:HG11	1:A:163:MET:HB3	1.68	0.76
2:C:16:LEU:HB2	2:C:19:ASN:ND2	2.00	0.76
2:C:98:LEU:O	2:C:98:LEU:HD23	1.86	0.76
2:D:82:LEU:HD12	2:D:82:LEU:N	2.01	0.75

*Continued on next page...*

*Continued from previous page...*

Atom-1	Atom-2	Interatomic distance (Å)	Clash overlap (Å)
2:C:119:MET:HE3	2:C:135:LEU:HD22	1.69	0.75
1:A:136:TYR:O	1:A:140:ILE:HG13	1.87	0.75
1:B:7:SER:O	1:B:8:ARG:HG2	1.86	0.75
1:B:126:GLN:HG2	1:B:127:THR:HG23	1.69	0.74
2:D:47:ARG:HH11	2:D:47:ARG:HG2	1.49	0.74
2:D:64:ASP:CG	2:D:67:ASN:HA	2.07	0.74
1:B:251:THR:O	1:B:254:LEU:HB3	1.87	0.74
2:D:126:ASP:OD1	2:D:161:THR:HG23	1.88	0.74
1:A:7:SER:O	1:A:8:ARG:HG2	1.88	0.74
2:D:82:LEU:H	2:D:82:LEU:CD1	2.00	0.73
2:C:173:GLU:HB3	2:D:201:LEU:HD22	1.69	0.73
2:D:50:LEU:HD12	2:D:50:LEU:O	1.87	0.73
1:A:88:LEU:HB3	1:A:94:ILE:HG21	1.69	0.73
1:A:101:VAL:HG23	1:A:110:ALA:HB3	1.68	0.73
2:D:64:ASP:OD2	2:D:67:ASN:HA	1.88	0.73
1:A:24:TRP:HA	1:A:181:PHE:CE2	2.23	0.73
1:A:124:LEU:HD11	1:A:128:LEU:HD21	1.71	0.73
1:A:334:MET:C	1:A:336:SER:H	1.92	0.72
1:A:50:TYR:CD2	1:A:73:VAL:HG22	2.23	0.72
2:D:122:ILE:HG12	2:D:123:GLY:H	1.53	0.72
1:A:180:GLU:HG3	1:A:181:PHE:N	2.04	0.72
2:D:11:SER:HA	2:D:24:GLU:OE2	1.90	0.72
2:D:101:TYR:CD2	2:D:120:LEU:HD11	2.25	0.71
1:A:251:THR:O	1:A:254:LEU:HB3	1.89	0.71
1:A:50:TYR:HD2	1:A:73:VAL:HG22	1.54	0.71
1:A:35:ASN:ND2	1:A:37:ASP:HB2	2.06	0.71
1:A:332:ALA:C	1:A:334:MET:H	1.92	0.70
1:B:137:MET:SD	1:B:218:LEU:HD21	2.32	0.70
1:B:180:GLU:HG3	1:B:181:PHE:N	2.05	0.70
2:C:173:GLU:HG2	2:C:174:TYR:CD1	2.26	0.70
1:A:161:ASN:HA	1:A:174:ILE:HD11	1.73	0.70
1:A:229:LYS:HD3	1:A:232:PHE:CD1	2.27	0.70
1:A:279:LYS:HG2	1:A:283:ARG:NH1	2.06	0.70
2:C:199:LEU:O	2:C:201:LEU:N	2.23	0.70
1:A:33:TRP:CZ3	1:A:102:LYS:HB3	2.26	0.69
1:B:35:ASN:O	1:B:38:ASP:HB2	1.92	0.69
1:B:63:GLU:O	1:B:65:VAL:HG23	1.90	0.69
1:B:136:TYR:O	1:B:140:ILE:HG13	1.92	0.69
1:A:200:PRO:O	1:A:204:VAL:HG22	1.92	0.69
1:B:20:PRO:HB2	1:B:22:GLU:HG2	1.74	0.69
1:B:47:ARG:HG2	1:B:48:GLY:N	2.06	0.69

*Continued on next page...*

*Continued from previous page...*

Atom-1	Atom-2	Interatomic distance (Å)	Clash overlap (Å)
1:B:93:ASN:HA	1:B:172:ARG:HD3	1.75	0.69
1:A:281:TRP:CH2	1:A:305:LEU:HD12	2.28	0.69
1:B:212:SER:OG	1:B:309:HIS:HB2	1.93	0.68
2:C:117:GLN:OE1	2:C:139:LYS:HE2	1.94	0.68
2:C:147:LYS:HE3	2:C:148:SER:HB2	1.76	0.68
1:B:121:PHE:HA	1:B:124:LEU:HB2	1.74	0.68
1:A:161:ASN:O	1:A:174:ILE:HG12	1.94	0.68
1:B:43:ARG:HH11	1:B:43:ARG:CB	1.92	0.68
1:A:11:VAL:HG23	1:A:12:TYR:CD2	2.27	0.68
2:D:58:PRO:HB2	2:D:60:GLU:HG3	1.76	0.68
2:D:199:LEU:O	2:D:201:LEU:N	2.27	0.68
1:B:136:TYR:CD1	1:B:171:LEU:HD12	2.28	0.68
2:D:12:TRP:CE3	2:D:13:PHE:HB2	2.28	0.68
2:D:194:PRO:O	2:D:197:TYR:CE1	2.46	0.68
2:C:137:CYS:HB3	2:C:140:CYS:SG	2.33	0.68
2:D:199:LEU:HD12	2:D:199:LEU:N	2.08	0.68
1:A:279:LYS:HD2	1:A:279:LYS:N	2.07	0.67
1:B:33:TRP:CZ3	1:B:102:LYS:HB3	2.29	0.67
1:B:26:TYR:O	1:B:29:HIS:HB3	1.94	0.67
1:B:229:LYS:HD3	1:B:232:PHE:HD1	1.56	0.67
2:D:60:GLU:CD	2:D:60:GLU:H	1.98	0.67
1:A:48:GLY:C	1:A:71:LYS:HZ2	1.97	0.67
1:A:57:ILE:HD11	1:A:62:ASN:CA	2.25	0.67
2:C:122:ILE:HG12	2:C:123:GLY:H	1.59	0.67
2:D:51:ASP:CB	2:D:56:LEU:HD12	2.25	0.67
1:A:136:TYR:HD1	1:A:171:LEU:HD12	1.60	0.67
1:A:196:TYR:HA	1:A:241:GLN:NE2	2.11	0.66
1:B:84:ILE:HG12	1:B:181:PHE:HE1	1.60	0.66
2:C:149:SER:HA	2:C:152:HIS:ND1	2.10	0.66
1:B:137:MET:CE	1:B:140:ILE:HD12	2.24	0.66
1:B:279:LYS:HD2	1:B:279:LYS:N	2.08	0.66
2:D:108:TYR:O	2:D:119:MET:HE2	1.95	0.66
2:C:114:CYS:O	2:C:139:LYS:HE3	1.95	0.66
1:A:137:MET:CE	1:A:140:ILE:HD12	2.25	0.66
2:D:51:ASP:HB3	2:D:56:LEU:HD12	1.77	0.66
1:A:36:GLN:HG3	2:D:190:PHE:HB2	1.76	0.66
2:D:138:PRO:HB2	2:D:176:PRO:HD2	1.78	0.66
1:B:71:LYS:O	1:B:73:VAL:HG23	1.96	0.66
1:A:11:VAL:HG23	1:A:12:TYR:HD2	1.61	0.66
1:A:170:LYS:HG3	1:A:172:ARG:HH12	1.62	0.65
2:C:18:GLY:HA2	2:C:151:HIS:CD2	2.31	0.65

*Continued on next page...*

*Continued from previous page...*

Atom-1	Atom-2	Interatomic distance (Å)	Clash overlap (Å)
2:D:109:CYS:O	6:D:375:HOH:O	2.13	0.65
2:D:191:LYS:C	2:D:192:ILE:HD12	2.16	0.65
1:B:8:ARG:NH1	1:B:184:PRO:HB3	2.12	0.65
1:B:279:LYS:HG2	1:B:283:ARG:NH1	2.11	0.65
2:C:132:MET:HE3	2:C:152:HIS:O	1.97	0.65
1:B:12:TYR:CD1	1:B:149:SER:HA	2.30	0.65
2:D:32:ASP:O	2:D:34:PHE:N	2.30	0.65
1:B:78:ILE:O	1:B:82:ILE:HG13	1.96	0.64
2:D:127:ILE:HG22	6:D:368:HOH:O	1.96	0.64
1:A:91:GLY:HA3	1:A:94:ILE:HG13	1.78	0.64
1:A:249:LEU:N	1:A:249:LEU:HD23	2.12	0.64
2:D:182:GLN:HG2	2:D:183:PHE:N	2.12	0.64
2:D:199:LEU:H	2:D:199:LEU:CD1	2.07	0.64
1:B:35:ASN:HD21	1:B:37:ASP:HB2	1.63	0.64
1:A:21:ARG:HA	1:A:24:TRP:NE1	2.11	0.64
1:A:125:TYR:HA	1:A:128:LEU:HD12	1.79	0.64
1:A:37:ASP:HA	2:D:190:PHE:CE1	2.32	0.64
1:B:101:VAL:HG23	1:B:110:ALA:HB3	1.80	0.64
1:B:249:LEU:N	1:B:249:LEU:HD23	2.12	0.64
1:A:137:MET:HE1	1:A:218:LEU:CD2	2.28	0.64
2:D:50:LEU:HA	2:D:53:ILE:HD12	1.79	0.64
1:B:12:TYR:CE1	1:B:149:SER:HA	2.34	0.63
1:A:26:TYR:O	1:A:29:HIS:HB3	1.99	0.63
1:A:251:THR:HG22	1:A:255:TYR:CE2	2.32	0.63
1:A:308:ASP:OD1	1:A:310:GLN:N	2.31	0.63
2:C:132:MET:HE1	2:C:153:HIS:HA	1.79	0.63
1:B:103:ASP:HB2	2:C:188:TYR:O	1.98	0.63
2:C:119:MET:HE3	2:C:135:LEU:HB3	1.79	0.63
2:C:36:LEU:HD13	2:C:50:LEU:HD21	1.81	0.63
1:B:145:ASP:OD2	1:B:316:ARG:NE	2.32	0.63
2:D:173:GLU:HG2	2:D:174:TYR:HD1	1.62	0.63
1:A:294:SER:OG	1:A:297:ALA:HB2	1.98	0.63
1:B:296:GLU:HG3	1:B:323:TYR:HA	1.80	0.63
2:C:104:GLY:C	2:C:106:PHE:H	2.02	0.63
1:A:39:TYR:HB3	1:A:58:ASN:HA	1.80	0.62
1:A:65:VAL:HG12	1:A:66:VAL:N	2.12	0.62
1:B:196:TYR:HA	1:B:241:GLN:NE2	2.14	0.62
1:B:200:PRO:O	1:B:204:VAL:HG22	1.99	0.62
1:A:123:GLN:HA	1:A:126:GLN:HE21	1.65	0.62
1:B:24:TRP:CE3	1:B:183:HIS:CE1	2.87	0.62
1:B:64:LYS:O	1:B:115:HIS:HB2	1.99	0.62

*Continued on next page...*

*Continued from previous page...*

Atom-1	Atom-2	Interatomic distance (Å)	Clash overlap (Å)
1:B:26:TYR:CZ	1:B:80:ARG:HB2	2.34	0.62
2:D:202:GLN:OE1	2:D:203:ALA:N	2.33	0.62
1:A:170:LYS:HG3	1:A:172:ARG:NH1	2.15	0.62
1:B:281:TRP:CH2	1:B:305:LEU:HD12	2.35	0.62
2:D:192:ILE:HD12	2:D:192:ILE:N	2.15	0.62
1:B:65:VAL:HG12	1:B:66:VAL:N	2.12	0.62
1:B:161:ASN:OD1	1:B:175:ASP:HB2	2.00	0.62
2:C:136:TYR:OH	2:C:141:MET:HG2	2.00	0.62
2:D:47:ARG:O	2:D:49:ALA:N	2.33	0.62
1:B:36:GLN:NE2	2:C:189:GLY:HA3	2.15	0.62
2:D:7:VAL:HG12	2:D:8:SER:N	2.13	0.62
1:B:42:VAL:HB	1:B:55:GLU:O	2.00	0.61
1:A:279:LYS:H	1:A:279:LYS:CD	2.11	0.61
2:D:149:SER:HA	2:D:152:HIS:ND1	2.15	0.61
1:A:269:PHE:HA	1:A:272:ILE:CG1	2.29	0.61
1:B:303:LYS:HB3	1:B:313:LEU:HD21	1.82	0.61
1:A:102:LYS:HA	1:A:108:THR:O	1.99	0.61
1:A:322:PRO:HA	1:A:325:TYR:CD2	2.36	0.61
1:A:50:TYR:CA	1:A:71:LYS:HD2	2.30	0.61
1:B:283:ARG:HG2	1:B:283:ARG:O	2.01	0.61
1:A:84:ILE:HG12	1:A:181:PHE:HE1	1.66	0.61
2:C:101:TYR:HD2	2:C:120:LEU:HD11	1.66	0.61
1:A:78:ILE:O	1:A:82:ILE:HG13	2.01	0.60
2:C:10:ILE:H	2:C:10:ILE:CD1	2.11	0.60
1:B:84:ILE:CG1	1:B:181:PHE:HE1	2.13	0.60
1:A:137:MET:SD	1:A:218:LEU:HD21	2.40	0.60
2:C:173:GLU:HA	2:D:201:LEU:HB3	1.83	0.60
2:D:140:CYS:SG	2:D:144:TYR:OH	2.54	0.60
1:A:158:LYS:HE3	1:A:160:HIS:HB2	1.83	0.60
1:B:33:TRP:HA	1:B:100:ILE:HD13	1.84	0.60
1:A:10:ARG:HB3	6:A:360:HOH:O	2.00	0.60
1:A:51:SER:N	1:A:71:LYS:HE3	2.16	0.60
1:A:86:GLU:O	1:A:89:ARG:HG2	2.02	0.60
1:A:296:GLU:HG3	1:A:323:TYR:HA	1.82	0.60
1:B:269:PHE:HA	1:B:272:ILE:CG1	2.28	0.60
2:C:25:VAL:HG13	2:C:87:TYR:CG	2.36	0.60
2:D:106:PHE:CD1	2:D:121:PRO:HD3	2.36	0.60
1:B:294:SER:OG	1:B:297:ALA:HB2	2.01	0.60
1:A:4:PRO:O	1:A:6:PRO:HD3	2.02	0.60
1:B:171:LEU:C	1:B:171:LEU:HD23	2.22	0.60
1:B:322:PRO:HA	1:B:325:TYR:CD2	2.37	0.60

*Continued on next page...*



*Continued from previous page...*

Atom-1	Atom-2	Interatomic distance (Å)	Clash overlap (Å)
2:D:16:LEU:HB2	2:D:19:ASN:HD22	1.67	0.60
2:C:167:LEU:C	2:C:167:LEU:HD23	2.23	0.60
2:D:193:HIS:CG	2:D:194:PRO:HD2	2.37	0.60
1:A:171:LEU:HD23	1:A:172:ARG:N	2.17	0.59
2:C:101:TYR:HB2	2:C:120:LEU:HD11	1.82	0.59
1:B:161:ASN:O	1:B:174:ILE:HG12	2.02	0.59
2:C:50:LEU:HD12	2:C:50:LEU:O	2.02	0.59
2:C:104:GLY:C	2:C:106:PHE:N	2.55	0.59
1:A:283:ARG:O	1:A:283:ARG:HG2	2.00	0.59
1:A:303:LYS:HB3	1:A:313:LEU:CD2	2.30	0.59
1:B:98:ALA:HB3	1:B:112:VAL:O	2.02	0.59
2:C:119:MET:CE	2:C:135:LEU:HD22	2.31	0.59
2:C:195:MET:CB	2:C:198:GLN:HG3	2.25	0.59
2:D:122:ILE:CG1	2:D:123:GLY:N	2.61	0.59
2:C:134:LYS:O	2:C:135:LEU:HG	2.02	0.59
1:B:240:ASP:O	1:B:244:ARG:HG2	2.03	0.59
2:C:186:ARG:NH2	2:C:191:LYS:HE3	2.16	0.59
2:D:192:ILE:HG22	2:D:192:ILE:O	2.02	0.59
1:A:94:ILE:HD11	1:A:143:ALA:HA	1.84	0.59
2:C:132:MET:CE	2:C:153:HIS:HA	2.32	0.59
2:D:195:MET:O	2:D:198:GLN:HB2	2.01	0.59
1:A:286:HIS:CE1	1:A:289:ASN:HB3	2.38	0.59
1:B:51:SER:HA	1:B:71:LYS:HG3	1.83	0.59
1:B:158:LYS:HE3	1:B:160:HIS:HB2	1.85	0.59
2:C:23:CYS:SG	2:C:97:MET:SD	3.01	0.59
2:D:195:MET:CB	2:D:198:GLN:HG3	2.32	0.59
1:B:161:ASN:HA	1:B:174:ILE:HD11	1.84	0.58
2:D:134:LYS:O	2:D:135:LEU:HG	2.02	0.58
1:B:74:LYS:O	1:B:78:ILE:HG12	2.03	0.58
1:A:180:GLU:CG	1:A:181:PHE:H	2.14	0.58
1:A:26:TYR:CZ	1:A:80:ARG:HB2	2.39	0.58
1:B:98:ALA:HB3	1:B:112:VAL:C	2.24	0.58
2:D:193:HIS:ND1	2:D:194:PRO:HD2	2.18	0.58
1:A:63:GLU:O	1:A:65:VAL:HG23	2.04	0.58
1:B:203:LEU:HD13	1:B:242:LEU:CB	2.32	0.58
2:D:137:CYS:HB3	2:D:140:CYS:SG	2.44	0.58
1:A:227:PHE:O	1:A:228:ARG:HB2	2.03	0.58
1:A:281:TRP:HH2	1:A:305:LEU:HD12	1.68	0.58
2:D:163:PHE:N	2:D:164:PRO:HD2	2.17	0.58
1:A:254:LEU:O	1:A:257:TYR:HB3	2.04	0.58
1:A:124:LEU:HG	1:A:125:TYR:N	2.18	0.58

*Continued on next page...*

*Continued from previous page...*

Atom-1	Atom-2	Interatomic distance (Å)	Clash overlap (Å)
1:B:168:HIS:O	1:B:170:LYS:N	2.37	0.58
1:A:187:GLU:HA	1:A:207:GLN:O	2.03	0.58
1:A:171:LEU:HD23	1:A:171:LEU:C	2.23	0.57
1:B:4:PRO:HA	1:B:262:ASN:O	2.04	0.57
1:B:57:ILE:HD11	1:B:62:ASN:CA	2.34	0.57
1:B:65:VAL:HG11	1:B:112:VAL:CG1	2.34	0.57
1:B:154:HIS:HA	1:B:179:ALA:HB2	1.86	0.57
1:B:308:ASP:OD1	1:B:310:GLN:N	2.38	0.57
2:D:66:PRO:HG2	2:D:68:GLN:HE21	1.69	0.57
1:A:321:HIS:CG	1:A:322:PRO:HD2	2.40	0.57
2:D:17:ARG:HH21	2:D:150:ARG:HB3	1.70	0.57
1:A:33:TRP:HA	1:A:100:ILE:HD13	1.85	0.57
2:C:158:TYR:N	2:C:158:TYR:CD1	2.70	0.57
1:A:5:VAL:HB	1:A:261:TYR:HA	1.86	0.57
1:A:258:ILE:O	1:A:262:ASN:N	2.38	0.57
1:B:180:GLU:CG	1:B:181:PHE:H	2.15	0.57
1:B:269:PHE:HA	1:B:272:ILE:CD1	2.34	0.57
2:C:173:GLU:CB	2:D:201:LEU:HD22	2.34	0.57
1:A:269:PHE:O	1:A:271:ASP:N	2.38	0.57
1:A:104:PRO:HG2	6:D:379:HOH:O	2.04	0.57
1:A:251:THR:OG1	1:A:276:HIS:N	2.38	0.57
1:B:24:TRP:HE3	1:B:183:HIS:CE1	2.23	0.57
2:C:193:HIS:CG	2:C:194:PRO:HD2	2.39	0.57
1:A:43:ARG:HG2	1:A:44:LYS:N	2.20	0.56
2:C:173:GLU:HB2	2:D:205:SER:HB2	1.87	0.56
1:A:121:PHE:HB2	1:A:125:TYR:CZ	2.41	0.56
1:A:23:TYR:OH	1:A:150:MET:HB3	2.05	0.56
1:A:71:LYS:O	1:A:73:VAL:HG23	2.04	0.56
1:A:125:TYR:HA	1:A:128:LEU:CD1	2.34	0.56
1:A:266:ASP:O	1:A:268:ARG:N	2.38	0.56
1:A:269:PHE:HA	1:A:272:ILE:CD1	2.34	0.56
1:B:39:TYR:N	1:B:39:TYR:CD1	2.73	0.56
2:C:195:MET:O	2:C:198:GLN:HB2	2.05	0.56
1:A:221:MET:O	1:A:224:SER:OG	2.18	0.56
1:B:47:ARG:HG3	1:B:47:ARG:HH11	1.70	0.56
2:C:101:TYR:CD1	2:C:101:TYR:C	2.78	0.56
1:A:9:ALA:O	1:A:13:THR:HB	2.05	0.56
1:B:269:PHE:CA	1:B:272:ILE:HG12	2.32	0.56
1:A:39:TYR:HB3	1:A:57:ILE:O	2.06	0.56
1:A:39:TYR:CD1	1:A:39:TYR:N	2.73	0.56
1:A:57:ILE:CD1	1:A:62:ASN:HA	2.33	0.56

*Continued on next page...*

*Continued from previous page...*

Atom-1	Atom-2	Interatomic distance (Å)	Clash overlap (Å)
1:A:136:TYR:CD1	1:A:171:LEU:HD12	2.41	0.56
1:A:196:TYR:HA	1:A:241:GLN:HE22	1.71	0.56
1:A:129:THR:N	1:A:132:ASP:OD2	2.32	0.55
1:A:269:PHE:CA	1:A:272:ILE:HG12	2.33	0.55
1:B:291:HIS:H	1:B:291:HIS:CD2	2.22	0.55
1:B:303:LYS:O	1:B:313:LEU:HG	2.06	0.55
1:B:254:LEU:O	1:B:257:TYR:HB3	2.06	0.55
2:C:193:HIS:ND1	2:C:194:PRO:HD2	2.20	0.55
1:A:154:HIS:HA	1:A:179:ALA:HB2	1.88	0.55
2:C:126:ASP:OD1	2:C:161:THR:HG23	2.07	0.55
1:A:120:ASP:O	1:A:123:GLN:HG2	2.07	0.55
1:A:240:ASP:O	1:A:244:ARG:HG2	2.07	0.55
1:B:126:GLN:HG3	1:B:126:GLN:O	2.06	0.55
1:A:45:LEU:H	1:A:54:PHE:HA	1.71	0.55
2:C:43:VAL:HG21	2:C:79:LEU:HD13	1.87	0.55
1:A:129:THR:O	1:A:130:ASP:C	2.44	0.55
1:B:24:TRP:HE3	1:B:183:HIS:HE1	1.55	0.55
1:B:125:TYR:CE2	1:B:230:GLU:HG3	2.41	0.55
2:D:5:GLU:O	2:D:7:VAL:HG23	2.07	0.55
1:A:49:LYS:N	1:A:71:LYS:HZ2	2.03	0.55
1:A:212:SER:OG	1:A:309:HIS:HB2	2.07	0.55
1:B:131:TYR:O	1:B:132:ASP:C	2.46	0.55
1:B:170:LYS:HG3	1:B:172:ARG:HH12	1.72	0.55
1:A:270:ASN:HD22	1:A:270:ASN:N	2.05	0.55
1:B:165:ASP:OD1	1:B:167:GLU:HG3	2.07	0.55
1:B:269:PHE:CD2	1:B:272:ILE:HD11	2.41	0.55
2:C:21:PHE:CZ	2:C:151:HIS:ND1	2.72	0.55
2:C:52:MET:SD	2:C:76:ALA:HB2	2.46	0.55
1:A:65:VAL:HG11	1:A:112:VAL:CG1	2.37	0.55
1:B:130:ASP:O	1:B:134:ARG:HG3	2.07	0.55
1:B:218:LEU:C	1:B:218:LEU:HD23	2.27	0.55
1:A:95:ILE:O	1:A:95:ILE:HG23	2.07	0.54
2:D:147:LYS:HE3	2:D:148:SER:HB2	1.89	0.54
1:A:218:LEU:HD23	1:A:218:LEU:C	2.27	0.54
1:A:237:ASP:OD1	1:A:240:ASP:N	2.38	0.54
2:D:167:LEU:HD23	2:D:167:LEU:O	2.06	0.54
1:A:37:ASP:HA	2:D:190:PHE:CD1	2.43	0.54
1:A:101:VAL:CG2	1:A:110:ALA:HB3	2.37	0.54
1:B:124:LEU:C	1:B:126:GLN:H	2.11	0.54
1:A:40:GLN:HB2	2:D:191:LYS:C	2.27	0.54
1:B:7:SER:C	1:B:8:ARG:HG2	2.25	0.54

*Continued on next page...*

*Continued from previous page...*

Atom-1	Atom-2	Interatomic distance (Å)	Clash overlap (Å)
2:C:32:ASP:O	2:C:34:PHE:N	2.41	0.54
2:C:119:MET:HB3	2:C:136:TYR:O	2.07	0.54
2:D:168:PHE:O	2:D:172:PRO:HG3	2.07	0.54
1:B:39:TYR:HB3	1:B:58:ASN:HA	1.89	0.54
2:D:174:TYR:O	2:D:176:PRO:HD3	2.08	0.54
1:A:50:TYR:HA	1:A:71:LYS:HD2	1.88	0.54
1:B:171:LEU:HD23	1:B:172:ARG:N	2.23	0.54
2:C:134:LYS:HB3	2:C:143:VAL:CG2	2.37	0.54
2:C:175:ARG:HD3	2:C:176:PRO:CD	2.36	0.54
2:D:140:CYS:SG	2:D:144:TYR:CE1	3.01	0.54
1:A:270:ASN:H	1:A:270:ASN:ND2	2.05	0.54
1:B:170:LYS:HG3	1:B:172:ARG:NH1	2.23	0.54
2:D:47:ARG:HG2	2:D:47:ARG:NH1	2.17	0.54
1:B:161:ASN:OD1	1:B:174:ILE:HG13	2.08	0.54
2:C:138:PRO:HB2	2:C:176:PRO:HD2	1.90	0.54
1:A:303:LYS:O	1:A:313:LEU:HG	2.08	0.54
1:A:334:MET:O	1:A:336:SER:N	2.38	0.54
2:C:47:ARG:O	2:C:49:ALA:N	2.41	0.54
2:C:150:ARG:HG3	2:C:151:HIS:H	1.73	0.54
1:A:64:LYS:O	1:A:115:HIS:HB2	2.08	0.53
1:A:203:LEU:HD13	1:A:242:LEU:CB	2.38	0.53
2:C:53:ILE:HD11	2:C:76:ALA:O	2.08	0.53
2:C:86:ARG:O	2:C:89:LEU:HB2	2.08	0.53
2:D:88:ILE:HD12	2:D:163:PHE:CG	2.43	0.53
1:A:317:GLU:O	1:A:318:ALA:C	2.46	0.53
1:B:251:THR:HG22	1:B:255:TYR:CE2	2.43	0.53
2:C:21:PHE:CE1	2:C:106:PHE:HA	2.43	0.53
2:C:67:ASN:ND2	2:C:67:ASN:O	2.42	0.53
1:B:247:LYS:O	1:B:279:LYS:HD3	2.09	0.53
2:C:100:LYS:HB2	2:C:106:PHE:CZ	2.43	0.53
1:A:165:ASP:OD1	1:A:167:GLU:HG3	2.09	0.53
2:C:111:ARG:NH2	2:C:113:TYR:CB	2.64	0.53
2:D:52:MET:SD	2:D:76:ALA:HB2	2.48	0.53
2:D:101:TYR:HB2	2:D:120:LEU:HD11	1.89	0.53
1:B:79:LYS:HA	1:B:82:ILE:HD12	1.89	0.53
1:B:237:ASP:OD1	1:B:240:ASP:N	2.38	0.53
1:B:196:TYR:CG	1:B:231:PRO:HG3	2.44	0.53
1:B:229:LYS:HD3	1:B:232:PHE:HA	1.89	0.53
2:C:167:LEU:HD23	2:C:167:LEU:O	2.09	0.53
2:C:108:TYR:HD2	2:C:116:ASN:O	1.92	0.53
2:D:21:PHE:CE1	2:D:106:PHE:HA	2.43	0.53

*Continued on next page...*

*Continued from previous page...*

Atom-1	Atom-2	Interatomic distance (Å)	Clash overlap (Å)
1:B:35:ASN:ND2	1:B:37:ASP:HB2	2.23	0.52
1:B:57:ILE:CD1	1:B:62:ASN:HA	2.38	0.52
1:B:73:VAL:HG12	1:B:74:LYS:N	2.21	0.52
1:B:258:ILE:O	1:B:262:ASN:N	2.42	0.52
1:A:269:PHE:CD2	1:A:272:ILE:HD11	2.44	0.52
1:B:306:ARG:HB3	1:B:306:ARG:NH1	2.23	0.52
1:B:125:TYR:HD1	1:B:125:TYR:O	1.91	0.52
1:B:329:LYS:C	1:B:331:GLN:H	2.13	0.52
1:A:103:ASP:CG	1:A:106:SER:HB2	2.30	0.52
1:A:261:TYR:O	1:A:262:ASN:C	2.47	0.52
1:A:280:ARG:HG3	6:A:367:HOH:O	2.10	0.52
1:A:94:ILE:CD1	1:A:143:ALA:HA	2.39	0.52
1:A:148:HIS:CE1	1:A:211:TYR:HB3	2.45	0.52
1:B:270:ASN:N	1:B:270:ASN:HD22	2.07	0.52
1:B:282:GLU:O	1:B:285:VAL:HG22	2.08	0.52
1:B:246:ALA:C	1:B:248:VAL:H	2.12	0.52
2:D:66:PRO:HB2	2:D:68:GLN:HG3	1.92	0.52
1:B:161:ASN:O	1:B:173:LEU:HD12	2.10	0.52
1:B:315:ALA:HB3	6:B:361:HOH:O	2.10	0.52
1:B:103:ASP:CG	1:B:106:SER:HB2	2.31	0.52
1:B:279:LYS:H	1:B:279:LYS:CD	2.12	0.52
1:B:47:ARG:HG2	1:B:48:GLY:O	2.10	0.51
1:B:81:GLU:HB2	1:B:177:GLY:HA2	1.91	0.51
2:D:80:TYR:O	2:D:80:TYR:CD1	2.62	0.51
2:D:140:CYS:SG	2:D:144:TYR:HE1	2.33	0.51
1:A:93:ASN:HD22	1:A:142:LYS:HB2	1.76	0.51
1:B:148:HIS:HE1	1:B:214:ASP:OD2	1.94	0.51
2:C:173:GLU:HB3	2:D:201:LEU:HD13	1.92	0.51
2:D:134:LYS:HB3	2:D:143:VAL:CG2	2.41	0.51
1:A:146:TYR:O	1:A:149:SER:HB2	2.09	0.51
2:C:70:ASP:OD1	2:C:73:GLU:HG3	2.10	0.51
2:C:112:VAL:HG21	2:D:134:LYS:HD2	1.93	0.51
2:C:203:ALA:HB3	6:C:377:HOH:O	2.10	0.51
2:C:201:LEU:HD21	2:C:204:ALA:HB3	1.92	0.51
1:A:43:ARG:HD3	1:A:45:LEU:HD23	1.92	0.51
1:A:324:PHE:O	1:A:328:VAL:HG23	2.11	0.51
1:B:153:MET:O	1:B:179:ALA:HB1	2.10	0.51
1:A:269:PHE:O	1:A:272:ILE:HG12	2.10	0.51
1:B:270:ASN:H	1:B:270:ASN:ND2	2.08	0.51
2:D:32:ASP:C	2:D:34:PHE:H	2.14	0.51
2:D:120:LEU:N	2:D:120:LEU:HD22	2.25	0.51

*Continued on next page...*

*Continued from previous page...*

Atom-1	Atom-2	Interatomic distance (Å)	Clash overlap (Å)
1:A:9:ALA:HB2	1:A:182:TYR:CE2	2.46	0.51
2:C:193:HIS:CG	2:C:194:PRO:N	2.79	0.51
2:C:198:GLN:HB2	2:C:199:LEU:HD12	1.93	0.51
1:A:47:ARG:NH1	1:A:47:ARG:HG2	2.24	0.51
1:A:226:ILE:HG22	1:A:292:LEU:HB3	1.93	0.51
2:D:9:TRP:O	2:D:12:TRP:HB3	2.10	0.51
1:A:40:GLN:HG3	2:D:193:HIS:HB2	1.93	0.51
2:C:163:PHE:N	2:C:164:PRO:HD2	2.25	0.51
1:A:162:VAL:HB	6:A:363:HOH:O	2.11	0.51
1:A:306:ARG:NH1	1:A:306:ARG:HB3	2.26	0.50
1:B:129:THR:O	1:B:130:ASP:C	2.49	0.50
1:A:144:LEU:HA	1:A:147:CYS:SG	2.51	0.50
1:A:229:LYS:HD3	1:A:232:PHE:HD1	1.71	0.50
1:A:270:ASN:HD22	1:A:270:ASN:H	1.57	0.50
1:A:335:GLY:HA2	6:A:422:HOH:O	2.10	0.50
1:B:286:HIS:CE1	1:B:289:ASN:HB3	2.46	0.50
2:C:158:TYR:N	2:C:158:TYR:HD1	2.07	0.50
2:D:23:CYS:SG	2:D:97:MET:SD	3.07	0.50
2:D:150:ARG:O	2:D:152:HIS:N	2.44	0.50
1:A:56:ALA:O	1:A:57:ILE:HB	2.11	0.50
1:A:76:LYS:O	1:A:78:ILE:N	2.44	0.50
1:A:168:HIS:O	1:A:170:LYS:N	2.45	0.50
1:B:122:LYS:O	1:B:126:GLN:HB3	2.11	0.50
2:C:193:HIS:C	2:C:193:HIS:CD2	2.84	0.50
2:D:84:HIS:O	2:D:88:ILE:HG23	2.11	0.50
1:A:103:ASP:HB2	1:A:108:THR:HB	1.92	0.50
1:B:227:PHE:O	1:B:228:ARG:HB2	2.11	0.50
1:B:269:PHE:O	1:B:272:ILE:HG12	2.11	0.50
2:D:7:VAL:HB	2:D:11:SER:CB	2.40	0.50
2:D:149:SER:O	2:D:152:HIS:HB2	2.11	0.50
1:A:24:TRP:CA	1:A:181:PHE:HE2	2.18	0.50
1:A:137:MET:HE3	1:A:140:ILE:CD1	2.37	0.50
2:C:87:TYR:O	2:C:89:LEU:N	2.45	0.50
1:B:43:ARG:NH1	1:B:43:ARG:CB	2.64	0.49
1:B:91:GLY:HA3	1:B:94:ILE:HG13	1.92	0.49
1:B:287:SER:HB3	6:B:390:HOH:O	2.12	0.49
2:D:6:GLU:O	2:D:7:VAL:O	2.30	0.49
2:D:182:GLN:HG2	2:D:183:PHE:H	1.77	0.49
1:A:334:MET:C	1:A:336:SER:N	2.61	0.49
1:B:95:ILE:HB	1:B:173:LEU:O	2.12	0.49
1:B:121:PHE:O	1:B:123:GLN:N	2.44	0.49

*Continued on next page...*

*Continued from previous page...*

Atom-1	Atom-2	Interatomic distance (Å)	Clash overlap (Å)
2:D:18:GLY:HA2	2:D:151:HIS:CD2	2.47	0.49
1:A:74:LYS:O	1:A:78:ILE:HG12	2.13	0.49
1:B:269:PHE:O	1:B:271:ASP:N	2.46	0.49
2:C:192:ILE:HD12	2:C:192:ILE:N	2.26	0.49
2:D:88:ILE:HD11	2:D:159:PHE:O	2.11	0.49
1:A:139:GLU:HA	1:A:142:LYS:HG3	1.94	0.49
1:A:281:TRP:C	1:A:283:ARG:H	2.15	0.49
2:C:202:GLN:O	2:C:202:GLN:HG2	2.13	0.49
2:D:16:LEU:HB2	2:D:19:ASN:ND2	2.26	0.49
2:D:158:TYR:N	2:D:158:TYR:CD1	2.78	0.49
2:D:167:LEU:HD23	2:D:167:LEU:C	2.33	0.49
1:A:48:GLY:C	1:A:71:LYS:NZ	2.65	0.49
1:A:92:PRO:HD2	1:A:146:TYR:CG	2.48	0.49
1:A:175:ASP:OD2	4:A:340:ANP:O2A	2.30	0.49
1:B:203:LEU:HD12	1:B:242:LEU:HD13	1.94	0.49
1:B:238:ASN:HB2	6:B:383:HOH:O	2.12	0.49
2:D:10:ILE:HD12	2:D:10:ILE:H	1.78	0.49
1:B:124:LEU:O	1:B:126:GLN:N	2.42	0.49
1:B:193:ALA:HB3	1:B:198:LYS:HG2	1.95	0.49
2:D:139:LYS:NZ	2:D:177:LYS:O	2.45	0.49
1:A:59:ILE:CD1	2:D:190:PHE:HE2	2.26	0.49
1:B:182:TYR:CE1	1:B:210:ASP:HB3	2.47	0.49
2:C:154:THR:CG2	2:C:159:PHE:HE1	2.26	0.49
2:D:36:LEU:HD13	2:D:50:LEU:HD21	1.94	0.49
1:A:73:VAL:HG12	1:A:74:LYS:N	2.23	0.49
1:B:99:ASP:O	1:B:112:VAL:HG23	2.13	0.49
1:A:9:ALA:CB	1:A:182:TYR:CE2	2.96	0.48
1:A:155:ARG:NH2	1:A:180:GLU:HB2	2.27	0.48
1:A:291:HIS:CD2	1:A:291:HIS:H	2.30	0.48
2:C:101:TYR:CD2	2:C:120:LEU:HD11	2.45	0.48
2:C:147:LYS:CE	2:C:148:SER:HB2	2.41	0.48
1:A:65:VAL:CG1	1:A:66:VAL:N	2.76	0.48
1:B:95:ILE:HG23	1:B:95:ILE:O	2.13	0.48
1:B:216:TRP:O	1:B:217:SER:C	2.52	0.48
1:B:266:ASP:O	1:B:268:ARG:N	2.46	0.48
2:D:173:GLU:CG	2:D:174:TYR:HD1	2.26	0.48
2:C:49:ALA:O	2:C:52:MET:HB3	2.13	0.48
2:D:47:ARG:O	2:D:48:GLN:C	2.52	0.48
2:D:104:GLY:C	2:D:106:PHE:N	2.64	0.48
1:A:128:LEU:HD22	1:A:132:ASP:HB3	1.94	0.48
1:A:247:LYS:O	1:A:279:LYS:HD3	2.13	0.48

*Continued on next page...*

*Continued from previous page...*

Atom-1	Atom-2	Interatomic distance (Å)	Clash overlap (Å)
1:B:11:VAL:HG23	1:B:12:TYR:CD2	2.48	0.48
1:B:133:ILE:O	1:B:134:ARG:C	2.51	0.48
1:A:240:ASP:HA	1:A:243:VAL:CG2	2.44	0.48
1:B:11:VAL:C	1:B:13:THR:N	2.65	0.48
1:B:139:GLU:HA	1:B:142:LYS:HG3	1.95	0.48
1:B:146:TYR:O	1:B:150:MET:HG2	2.14	0.48
1:B:194:SER:O	1:B:198:LYS:HG3	2.13	0.48
1:B:257:TYR:CE1	1:B:308:ASP:HA	2.48	0.48
1:B:308:ASP:OD1	1:B:310:GLN:HB2	2.14	0.48
2:C:190:PHE:CZ	2:C:191:LYS:HD2	2.48	0.48
1:A:196:TYR:CG	1:A:231:PRO:HG3	2.48	0.48
1:B:103:ASP:OD2	1:B:106:SER:HB2	2.14	0.48
2:C:98:LEU:O	2:C:102:GLN:HG3	2.13	0.48
1:A:246:ALA:C	1:A:248:VAL:H	2.17	0.48
1:A:279:LYS:NZ	6:A:353:HOH:O	2.46	0.48
1:A:294:SER:OG	1:A:297:ALA:CB	2.61	0.48
1:B:65:VAL:CG1	1:B:66:VAL:N	2.77	0.48
1:B:161:ASN:C	1:B:174:ILE:HG12	2.34	0.48
2:C:29:TYR:O	2:C:35:ASN:ND2	2.43	0.48
2:D:104:GLY:C	2:D:106:PHE:H	2.15	0.48
1:A:37:ASP:HA	2:D:190:PHE:CZ	2.49	0.48
1:A:106:SER:O	1:A:107:ARG:HB3	2.14	0.48
1:B:223:ALA:O	1:B:227:PHE:HB2	2.14	0.48
1:B:265:LEU:O	1:B:266:ASP:C	2.52	0.48
2:C:62:LEU:HD12	2:C:63:GLU:N	2.29	0.48
2:C:195:MET:O	2:C:198:GLN:N	2.47	0.48
2:D:65:ASN:CB	2:D:66:PRO:HD3	2.39	0.48
2:D:122:ILE:CG1	2:D:123:GLY:H	2.23	0.48
2:D:186:ARG:NH2	2:D:190:PHE:CD1	2.81	0.48
1:A:70:LEU:HD13	1:A:78:ILE:HG23	1.96	0.48
1:B:65:VAL:CG1	1:B:112:VAL:CG1	2.91	0.48
1:B:134:ARG:HG2	1:B:323:TYR:CZ	2.49	0.48
1:B:159:PRO:HD3	1:B:197:PHE:CZ	2.49	0.48
1:A:124:LEU:HG	1:A:125:TYR:HD1	1.78	0.47
1:A:133:ILE:O	1:A:134:ARG:C	2.50	0.47
1:A:239:TYR:CE2	1:A:268:ARG:HG2	2.48	0.47
2:C:199:LEU:C	2:C:201:LEU:H	2.16	0.47
2:D:199:LEU:C	2:D:201:LEU:H	2.17	0.47
1:A:227:PHE:CE1	1:A:284:PHE:HB2	2.49	0.47
1:A:314:THR:HG22	6:A:356:HOH:O	2.13	0.47
1:B:229:LYS:HG2	1:B:231:PRO:O	2.14	0.47

*Continued on next page...*



*Continued from previous page...*

Atom-1	Atom-2	Interatomic distance (Å)	Clash overlap (Å)
2:D:12:TRP:CZ3	2:D:13:PHE:HB2	2.48	0.47
2:D:100:LYS:HB2	2:D:106:PHE:CZ	2.49	0.47
2:D:150:ARG:C	2:D:152:HIS:H	2.16	0.47
2:D:190:PHE:CZ	2:D:191:LYS:HD2	2.49	0.47
1:B:196:TYR:HA	1:B:241:GLN:HE22	1.78	0.47
1:B:279:LYS:HA	6:B:382:HOH:O	2.14	0.47
1:A:9:ALA:HB2	1:A:210:ASP:CB	2.44	0.47
1:A:50:TYR:HD2	1:A:73:VAL:CG2	2.25	0.47
1:A:331:GLN:O	1:A:334:MET:HB2	2.14	0.47
1:B:121:PHE:O	1:B:122:LYS:C	2.51	0.47
1:B:129:THR:N	1:B:132:ASP:OD2	2.38	0.47
1:B:240:ASP:HA	1:B:243:VAL:CG2	2.44	0.47
1:B:84:ILE:HG22	1:B:85:LEU:N	2.30	0.47
1:B:121:PHE:C	1:B:123:GLN:N	2.67	0.47
1:B:144:LEU:HA	1:B:147:CYS:SG	2.55	0.47
1:A:130:ASP:O	1:A:134:ARG:HG3	2.14	0.47
2:C:124:LEU:HD11	2:D:112:VAL:HG11	1.96	0.47
2:D:21:PHE:CZ	2:D:151:HIS:ND1	2.76	0.47
1:A:88:LEU:CD2	1:A:147:CYS:HA	2.44	0.47
1:A:269:PHE:O	1:A:272:ILE:N	2.31	0.47
1:B:24:TRP:HB2	1:B:181:PHE:HD2	1.79	0.47
1:B:76:LYS:O	1:B:78:ILE:N	2.48	0.47
1:B:137:MET:HE1	1:B:218:LEU:HD21	1.96	0.47
1:B:261:TYR:O	1:B:262:ASN:C	2.52	0.47
2:C:32:ASP:C	2:C:34:PHE:H	2.18	0.47
2:C:82:LEU:H	2:C:82:LEU:CD1	2.20	0.47
2:D:111:ARG:NH2	2:D:113:TYR:CB	2.69	0.47
1:A:192:VAL:O	1:A:193:ALA:HB3	2.14	0.47
1:A:332:ALA:C	1:A:334:MET:N	2.64	0.47
1:B:11:VAL:HG23	1:B:12:TYR:HD2	1.80	0.47
2:D:31:GLN:O	2:D:33:LYS:N	2.47	0.47
2:D:133:VAL:HG22	2:D:134:LYS:N	2.29	0.47
1:A:131:TYR:CZ	1:A:327:VAL:HG22	2.49	0.47
1:B:9:ALA:O	1:B:13:THR:HB	2.15	0.47
2:C:119:MET:HE3	2:C:135:LEU:CB	2.44	0.47
1:A:134:ARG:HG2	1:A:323:TYR:CZ	2.49	0.46
1:A:159:PRO:HD3	1:A:197:PHE:CZ	2.50	0.46
1:B:50:TYR:O	1:B:51:SER:HB3	2.15	0.46
2:C:197:TYR:O	2:C:198:GLN:C	2.53	0.46
1:A:47:ARG:HG2	1:A:47:ARG:HH11	1.80	0.46
1:A:161:ASN:C	1:A:174:ILE:HG12	2.35	0.46

*Continued on next page...*

*Continued from previous page...*

Atom-1	Atom-2	Interatomic distance (Å)	Clash overlap (Å)
1:B:5:VAL:HB	1:B:261:TYR:HA	1.96	0.46
2:C:150:ARG:C	2:C:152:HIS:H	2.19	0.46
2:D:36:LEU:CD1	2:D:50:LEU:HD21	2.45	0.46
1:A:218:LEU:HD23	1:A:218:LEU:O	2.14	0.46
1:A:88:LEU:O	1:A:89:ARG:C	2.54	0.46
1:B:121:PHE:HD2	1:B:125:TYR:HD2	1.62	0.46
1:B:281:TRP:HH2	1:B:305:LEU:HD12	1.79	0.46
2:C:20:GLU:N	2:C:20:GLU:OE1	2.48	0.46
2:C:136:TYR:HH	2:C:141:MET:HG2	1.80	0.46
2:D:5:GLU:C	2:D:7:VAL:H	2.18	0.46
1:A:26:TYR:O	1:A:29:HIS:N	2.49	0.46
2:C:182:GLN:HG2	2:C:183:PHE:N	2.30	0.46
1:A:286:HIS:HE1	1:A:289:ASN:HB3	1.81	0.46
1:B:126:GLN:CG	1:B:127:THR:HG23	2.42	0.46
1:A:26:TYR:O	1:A:27:GLU:C	2.54	0.46
1:B:203:LEU:HD13	1:B:242:LEU:CA	2.45	0.46
2:C:30:ILE:HG21	2:C:54:LEU:HD21	1.97	0.46
1:A:265:LEU:O	1:A:266:ASP:C	2.55	0.46
2:C:31:GLN:O	2:C:33:LYS:N	2.48	0.46
2:D:25:VAL:CG2	2:D:80:TYR:HE1	2.29	0.46
1:A:40:GLN:HG3	2:D:193:HIS:H	1.80	0.46
1:B:11:VAL:O	1:B:13:THR:N	2.49	0.46
1:B:216:TRP:O	1:B:218:LEU:N	2.49	0.46
2:C:119:MET:HE3	2:C:135:LEU:CD2	2.43	0.46
1:A:270:ASN:N	1:A:270:ASN:ND2	2.63	0.46
1:B:54:PHE:HE2	2:D:169:MET:HG3	1.81	0.46
2:C:136:TYR:HE1	2:C:138:PRO:HA	1.80	0.46
1:A:194:SER:O	1:A:198:LYS:HG3	2.15	0.45
1:B:270:ASN:HD22	1:B:270:ASN:H	1.63	0.45
2:C:173:GLU:HB3	2:D:201:LEU:CD2	2.43	0.45
2:D:99:GLU:HB2	6:D:366:HOH:O	2.14	0.45
1:A:79:LYS:HA	1:A:82:ILE:HD12	1.97	0.45
1:A:129:THR:O	1:A:132:ASP:N	2.50	0.45
1:B:94:ILE:O	1:B:95:ILE:C	2.54	0.45
2:D:101:TYR:HD2	2:D:120:LEU:CD1	2.23	0.45
2:D:197:TYR:O	2:D:198:GLN:C	2.55	0.45
1:A:11:VAL:C	1:A:13:THR:N	2.68	0.45
1:A:106:SER:HB3	1:A:108:THR:OG1	2.16	0.45
1:B:44:LYS:HB2	2:D:169:MET:HB3	1.99	0.45
1:B:145:ASP:HB2	1:B:315:ALA:HB1	1.99	0.45
1:B:218:LEU:HD23	1:B:218:LEU:O	2.16	0.45

*Continued on next page...*

*Continued from previous page...*

Atom-1	Atom-2	Interatomic distance (Å)	Clash overlap (Å)
2:C:62:LEU:HD12	2:C:63:GLU:O	2.16	0.45
2:D:49:ALA:O	2:D:52:MET:HB3	2.17	0.45
1:A:35:ASN:HB3	1:A:38:ASP:OD2	2.17	0.45
1:A:54:PHE:O	1:A:66:VAL:HG13	2.16	0.45
1:A:203:LEU:HD12	1:A:242:LEU:HD13	1.97	0.45
1:B:40:GLN:O	1:B:56:ALA:HB1	2.16	0.45
1:B:146:TYR:O	1:B:149:SER:HB2	2.16	0.45
1:B:251:THR:OG1	1:B:276:HIS:N	2.48	0.45
2:D:158:TYR:N	2:D:158:TYR:HD1	2.14	0.45
1:A:5:VAL:CB	1:A:261:TYR:HA	2.47	0.45
1:A:119:THR:O	1:A:124:LEU:HB3	2.17	0.45
2:C:150:ARG:HG3	2:C:151:HIS:CD2	2.52	0.45
2:D:84:HIS:CE1	2:D:88:ILE:HG21	2.52	0.45
1:A:139:GLU:O	1:A:142:LYS:HB2	2.17	0.45
1:B:286:HIS:CE1	1:B:289:ASN:ND2	2.84	0.45
2:C:86:ARG:HA	2:C:89:LEU:HD12	1.99	0.45
2:C:143:VAL:HG22	2:C:144:TYR:N	2.31	0.45
1:A:257:TYR:CE1	1:A:308:ASP:HA	2.51	0.45
2:C:87:TYR:O	2:C:90:THR:HG23	2.16	0.45
2:C:187:LEU:HD21	2:D:166:MET:HB2	1.99	0.45
2:D:74:GLN:O	2:D:78:MET:HB2	2.17	0.45
1:B:218:LEU:O	1:B:219:GLY:C	2.55	0.45
2:D:154:THR:CG2	2:D:159:PHE:HE1	2.29	0.45
1:A:227:PHE:CD1	1:A:284:PHE:HB2	2.52	0.45
1:B:270:ASN:N	1:B:270:ASN:ND2	2.65	0.45
2:D:27:GLU:O	2:D:28:ASP:C	2.53	0.45
1:A:195:ARG:NE	1:A:236:HIS:O	2.50	0.45
2:D:65:ASN:HB3	2:D:66:PRO:CD	2.39	0.45
2:D:65:ASN:C	2:D:67:ASN:H	2.19	0.45
2:D:192:ILE:N	2:D:192:ILE:CD1	2.78	0.45
1:A:242:LEU:HD23	1:A:269:PHE:CE2	2.52	0.44
1:B:68:LYS:NZ	1:B:81:GLU:OE2	2.49	0.44
2:C:41:GLU:H	2:C:41:GLU:HG2	1.59	0.44
2:C:100:LYS:HB2	2:C:106:PHE:CE2	2.52	0.44
2:C:193:HIS:CG	2:C:194:PRO:CD	2.99	0.44
1:A:301:LEU:O	1:A:303:LYS:N	2.51	0.44
1:B:125:TYR:O	1:B:125:TYR:CD1	2.69	0.44
1:A:76:LYS:O	1:A:79:LYS:N	2.50	0.44
1:A:308:ASP:OD1	1:A:310:GLN:HB2	2.17	0.44
1:B:12:TYR:HE2	6:B:361:HOH:O	2.00	0.44
1:B:281:TRP:C	1:B:283:ARG:H	2.21	0.44

*Continued on next page...*

*Continued from previous page...*

Atom-1	Atom-2	Interatomic distance (Å)	Clash overlap (Å)
2:C:186:ARG:HH22	2:C:191:LYS:HE3	1.81	0.44
2:C:195:MET:H	2:C:195:MET:HG2	1.43	0.44
1:A:267:PRO:HA	1:A:270:ASN:ND2	2.31	0.44
2:C:138:PRO:HB2	2:C:176:PRO:CD	2.48	0.44
2:D:79:LEU:HA	2:D:82:LEU:HD13	2.00	0.44
1:A:43:ARG:CG	1:A:44:LYS:N	2.80	0.44
1:A:100:ILE:HD12	1:A:100:ILE:N	2.20	0.44
1:B:317:GLU:O	1:B:318:ALA:C	2.55	0.44
1:B:321:HIS:CG	1:B:322:PRO:HD2	2.52	0.44
2:C:18:GLY:N	2:C:20:GLU:OE1	2.51	0.44
2:C:36:LEU:CD1	2:C:50:LEU:HD21	2.47	0.44
1:A:119:THR:O	1:A:120:ASP:C	2.56	0.44
1:A:137:MET:O	1:A:141:LEU:HG	2.17	0.44
1:B:70:LEU:HD13	1:B:78:ILE:HG23	1.99	0.44
1:B:102:LYS:HA	1:B:108:THR:O	2.18	0.44
1:B:145:ASP:CB	1:B:315:ALA:HB1	2.48	0.44
1:B:168:HIS:C	1:B:170:LYS:N	2.70	0.44
2:D:41:GLU:HB2	6:D:381:HOH:O	2.17	0.44
2:D:64:ASP:OD1	2:D:67:ASN:HA	2.17	0.44
1:A:103:ASP:O	1:A:107:ARG:N	2.47	0.44
1:B:47:ARG:HG3	1:B:47:ARG:NH1	2.32	0.44
2:C:193:HIS:CD2	2:C:194:PRO:N	2.86	0.44
2:D:134:LYS:HB3	2:D:143:VAL:HG22	2.00	0.44
1:A:103:ASP:OD2	2:D:188:TYR:O	2.35	0.44
1:B:181:PHE:N	1:B:181:PHE:CD1	2.84	0.44
1:A:44:LYS:NZ	1:A:47:ARG:HB3	2.32	0.44
1:A:117:ASN:HB2	1:A:165:ASP:OD2	2.18	0.44
1:A:251:THR:CG2	1:A:255:TYR:CE2	3.01	0.44
1:B:108:THR:HA	1:B:109:PRO:HD3	1.84	0.44
2:C:187:LEU:HD13	2:D:162:GLY:CA	2.36	0.44
2:D:10:ILE:HD12	2:D:10:ILE:N	2.33	0.44
2:D:25:VAL:O	2:D:26:ASP:C	2.56	0.44
2:D:32:ASP:C	2:D:34:PHE:N	2.71	0.44
2:D:57:GLU:HA	2:D:58:PRO:HD3	1.83	0.44
2:D:117:GLN:NE2	2:D:118:PRO:HD2	2.33	0.44
1:B:196:TYR:CD1	1:B:234:HIS:HA	2.53	0.43
1:A:148:HIS:HE1	1:A:214:ASP:OD2	2.01	0.43
1:B:24:TRP:CA	1:B:181:PHE:CE2	2.78	0.43
2:C:150:ARG:NH2	6:C:368:HOH:O	2.48	0.43
2:D:114:CYS:SG	2:D:139:LYS:HD2	2.58	0.43
1:A:131:TYR:O	1:A:132:ASP:C	2.57	0.43

*Continued on next page...*

*Continued from previous page...*

Atom-1	Atom-2	Interatomic distance (Å)	Clash overlap (Å)
1:A:153:MET:HE1	1:A:209:TYR:HE1	1.83	0.43
1:B:100:ILE:HG23	1:B:111:LEU:HD23	2.00	0.43
2:C:98:LEU:HD23	2:C:98:LEU:C	2.39	0.43
2:C:106:PHE:CD1	2:C:121:PRO:HD3	2.53	0.43
1:B:40:GLN:HE21	1:B:59:ILE:HG12	1.83	0.43
2:D:98:LEU:HD23	2:D:98:LEU:O	2.18	0.43
1:A:306:ARG:HD3	1:A:311:SER:OG	2.18	0.43
1:B:137:MET:HE3	1:B:140:ILE:CD1	2.38	0.43
1:B:230:GLU:HA	1:B:231:PRO:HA	1.82	0.43
2:C:35:ASN:C	2:C:37:THR:H	2.21	0.43
1:A:145:ASP:CB	1:A:315:ALA:HB1	2.49	0.43
1:A:161:ASN:OD1	1:A:175:ASP:HB2	2.19	0.43
1:A:216:TRP:O	1:A:219:GLY:N	2.52	0.43
2:D:7:VAL:HG11	2:D:11:SER:CB	2.40	0.43
2:D:99:GLU:OE1	2:D:99:GLU:HA	2.18	0.43
1:A:11:VAL:O	1:A:13:THR:N	2.51	0.43
1:A:161:ASN:HA	1:A:174:ILE:CD1	2.45	0.43
1:A:239:TYR:CD2	1:A:268:ARG:HG2	2.54	0.43
1:A:322:PRO:HA	1:A:325:TYR:CE2	2.53	0.43
1:B:85:LEU:HD21	1:B:176:TRP:CD1	2.54	0.43
2:D:73:GLU:O	2:D:76:ALA:HB3	2.18	0.43
1:A:10:ARG:CZ	1:A:310:GLN:O	2.67	0.43
1:A:11:VAL:C	1:A:13:THR:H	2.22	0.43
1:A:12:TYR:O	1:A:15:VAL:HG23	2.19	0.43
1:A:102:LYS:CA	1:A:108:THR:O	2.66	0.43
1:A:301:LEU:C	1:A:303:LYS:N	2.72	0.43
2:C:18:GLY:HA2	2:C:151:HIS:HD2	1.81	0.43
2:C:186:ARG:NH1	2:C:190:PHE:HA	2.34	0.43
1:B:216:TRP:O	1:B:219:GLY:N	2.52	0.43
2:C:122:ILE:CG1	2:C:123:GLY:N	2.77	0.43
2:D:109:CYS:N	2:D:117:GLN:O	2.52	0.43
2:D:195:MET:O	2:D:196:ALA:C	2.58	0.43
1:A:95:ILE:HA	1:A:172:ARG:HD2	2.01	0.43
1:A:124:LEU:C	1:A:124:LEU:HD12	2.39	0.43
1:A:181:PHE:N	1:A:181:PHE:CD1	2.87	0.43
1:B:80:ARG:CG	1:B:80:ARG:O	2.67	0.43
1:B:137:MET:O	1:B:141:LEU:HG	2.19	0.43
1:B:192:VAL:O	1:B:193:ALA:HB3	2.18	0.43
1:B:229:LYS:CD	1:B:232:PHE:HA	2.49	0.43
2:D:140:CYS:O	2:D:141:MET:HB2	2.19	0.43
2:C:88:ILE:HD12	2:C:163:PHE:CG	2.54	0.42

*Continued on next page...*

*Continued from previous page...*

Atom-1	Atom-2	Interatomic distance (Å)	Clash overlap (Å)
1:A:51:SER:CA	1:A:71:LYS:HE3	2.49	0.42
1:B:85:LEU:HB3	1:B:97:LEU:HD22	2.00	0.42
2:D:193:HIS:CG	2:D:194:PRO:CD	3.03	0.42
1:A:135:PHE:HA	1:A:327:VAL:HG21	2.01	0.42
1:B:83:LYS:HD2	1:B:83:LYS:HA	1.87	0.42
1:B:86:GLU:O	1:B:89:ARG:HG2	2.18	0.42
1:B:92:PRO:O	1:B:94:ILE:HG12	2.20	0.42
2:C:199:LEU:C	2:C:201:LEU:N	2.71	0.42
1:A:81:GLU:O	1:A:85:LEU:HD12	2.19	0.42
1:A:168:HIS:C	1:A:170:LYS:N	2.72	0.42
1:A:229:LYS:HD3	1:A:232:PHE:HA	2.00	0.42
1:B:153:MET:O	1:B:179:ALA:CB	2.67	0.42
2:C:150:ARG:HG3	2:C:151:HIS:N	2.35	0.42
2:C:197:TYR:CD1	2:C:197:TYR:N	2.83	0.42
2:D:164:PRO:HG2	2:D:165:HIS:H	1.82	0.42
1:A:115:HIS:ND1	1:A:116:VAL:N	2.68	0.42
2:C:52:MET:SD	2:C:76:ALA:CB	3.07	0.42
2:C:133:VAL:HG22	2:C:134:LYS:N	2.34	0.42
1:A:59:ILE:HD11	2:D:190:PHE:HE2	1.84	0.42
1:A:218:LEU:O	1:A:219:GLY:C	2.57	0.42
1:A:269:PHE:O	1:A:270:ASN:C	2.57	0.42
1:B:11:VAL:C	1:B:13:THR:H	2.22	0.42
1:B:51:SER:C	1:B:71:LYS:HE3	2.40	0.42
1:B:322:PRO:HA	1:B:325:TYR:CE2	2.54	0.42
1:B:324:PHE:O	1:B:325:TYR:C	2.58	0.42
2:C:47:ARG:O	2:C:48:GLN:C	2.57	0.42
2:C:122:ILE:HD12	2:C:164:PRO:HG3	2.01	0.42
2:D:119:MET:CE	2:D:135:LEU:HD13	2.49	0.42
2:D:184:VAL:O	2:D:186:ARG:HG3	2.19	0.42
1:B:42:VAL:HG12	1:B:43:ARG:N	2.35	0.42
1:B:79:LYS:C	1:B:81:GLU:H	2.23	0.42
1:B:138:TYR:CE1	1:B:328:VAL:HG22	2.55	0.42
1:B:294:SER:OG	1:B:297:ALA:CB	2.68	0.42
1:B:306:ARG:NH1	1:B:306:ARG:CB	2.82	0.42
2:C:173:GLU:OE1	2:D:201:LEU:HD13	2.19	0.42
2:D:114:CYS:HA	2:D:139:LYS:HD2	2.01	0.42
2:D:199:LEU:C	2:D:201:LEU:N	2.72	0.42
1:A:39:TYR:O	2:D:190:PHE:CD2	2.73	0.42
1:A:98:ALA:HB3	1:A:112:VAL:C	2.39	0.42
1:A:281:TRP:C	1:A:283:ARG:N	2.72	0.42
2:C:112:VAL:HG11	2:D:134:LYS:HE3	2.01	0.42

*Continued on next page...*

*Continued from previous page...*

Atom-1	Atom-2	Interatomic distance (Å)	Clash overlap (Å)
2:D:150:ARG:HG3	2:D:151:HIS:H	1.85	0.42
1:A:49:LYS:C	1:A:71:LYS:HD2	2.40	0.42
1:A:227:PHE:HA	1:A:289:ASN:ND2	2.35	0.42
1:A:321:HIS:HA	1:A:322:PRO:HD3	1.85	0.42
1:B:280:ARG:HG3	6:B:382:HOH:O	2.19	0.42
1:B:333:ARG:HB3	1:B:336:SER:HA	2.01	0.42
2:C:148:SER:HA	6:C:359:HOH:O	2.19	0.42
2:D:71:LEU:HD23	2:D:71:LEU:O	2.19	0.42
2:D:108:TYR:HD2	2:D:116:ASN:O	2.02	0.42
1:A:327:VAL:HG12	1:A:328:VAL:N	2.34	0.42
1:B:60:THR:O	1:B:61:ASN:HB3	2.19	0.42
1:B:82:ILE:O	1:B:86:GLU:HG3	2.20	0.42
1:B:226:ILE:HG22	1:B:292:LEU:HB3	2.00	0.42
2:C:197:TYR:H	2:C:197:TYR:HD1	1.66	0.42
2:C:201:LEU:O	2:D:173:GLU:HA	2.19	0.42
2:D:9:TRP:HH2	2:D:77:GLU:HA	1.85	0.42
2:D:62:LEU:HD12	2:D:63:GLU:N	2.35	0.42
2:D:195:MET:O	2:D:198:GLN:N	2.53	0.42
1:A:20:PRO:HB2	1:A:22:GLU:HG2	2.02	0.41
1:B:5:VAL:HG23	1:B:261:TYR:C	2.40	0.41
1:B:101:VAL:CG2	1:B:110:ALA:HB3	2.48	0.41
2:C:30:ILE:CG2	2:C:54:LEU:HD21	2.50	0.41
2:D:197:TYR:O	2:D:200:GLN:N	2.52	0.41
1:A:216:TRP:O	1:A:217:SER:C	2.59	0.41
2:C:165:HIS:O	2:C:169:MET:HG2	2.19	0.41
2:C:186:ARG:HH11	2:C:190:PHE:HA	1.84	0.41
2:D:47:ARG:C	2:D:49:ALA:N	2.72	0.41
2:D:126:ASP:CG	2:D:161:THR:HG23	2.41	0.41
1:A:172:ARG:HH11	1:A:172:ARG:HG2	1.85	0.41
1:B:24:TRP:CB	1:B:181:PHE:HD2	2.33	0.41
1:B:301:LEU:O	1:B:303:LYS:N	2.54	0.41
2:C:64:ASP:CG	2:C:67:ASN:HA	2.39	0.41
2:C:187:LEU:CD2	2:D:166:MET:HB2	2.50	0.41
2:D:5:GLU:HG3	2:D:7:VAL:HG22	2.03	0.41
2:D:190:PHE:CG	2:D:191:LYS:N	2.89	0.41
1:A:68:LYS:NZ	1:A:81:GLU:OE2	2.51	0.41
1:A:94:ILE:O	1:A:95:ILE:C	2.58	0.41
1:A:158:LYS:O	1:A:159:PRO:C	2.59	0.41
1:A:324:PHE:O	1:A:325:TYR:C	2.58	0.41
2:C:164:PRO:O	2:C:168:PHE:HD1	2.04	0.41
2:D:114:CYS:HA	2:D:139:LYS:CD	2.49	0.41

*Continued on next page...*

*Continued from previous page...*

Atom-1	Atom-2	Interatomic distance (Å)	Clash overlap (Å)
1:A:203:LEU:HD13	1:A:242:LEU:CA	2.50	0.41
1:B:50:TYR:CE2	1:B:77:LYS:NZ	2.84	0.41
1:B:76:LYS:O	1:B:79:LYS:N	2.53	0.41
1:B:99:ASP:H	1:B:112:VAL:HB	1.85	0.41
1:B:262:ASN:ND2	6:B:360:HOH:O	2.54	0.41
2:C:175:ARG:HA	2:C:176:PRO:HD3	1.92	0.41
2:D:70:ASP:OD1	2:D:73:GLU:HG3	2.19	0.41
2:C:39:LEU:HD13	2:C:79:LEU:HD11	2.01	0.41
2:C:99:GLU:HA	2:C:99:GLU:OE1	2.21	0.41
2:D:149:SER:HA	2:D:152:HIS:HD1	1.85	0.41
1:A:282:GLU:O	1:A:285:VAL:HG22	2.20	0.41
2:C:87:TYR:C	2:C:89:LEU:N	2.73	0.41
2:C:134:LYS:HD2	2:D:112:VAL:HG21	2.01	0.41
1:A:137:MET:HA	1:A:140:ILE:HD12	2.03	0.41
1:B:222:LEU:O	1:B:226:ILE:HG12	2.20	0.41
2:C:164:PRO:HG2	2:C:165:HIS:H	1.86	0.41
2:C:173:GLU:N	2:D:201:LEU:HD13	2.36	0.41
1:A:65:VAL:CG1	1:A:112:VAL:CG1	2.99	0.41
1:A:103:ASP:CG	2:D:188:TYR:O	2.59	0.41
1:B:11:VAL:HG21	6:B:361:HOH:O	2.21	0.41
1:B:34:GLY:HA3	1:B:99:ASP:OD2	2.21	0.41
1:B:80:ARG:O	1:B:80:ARG:HG2	2.20	0.41
1:B:106:SER:C	1:B:108:THR:H	2.23	0.41
1:B:107:ARG:HG2	6:B:423:HOH:O	2.20	0.41
1:B:148:HIS:CE1	1:B:211:TYR:HB3	2.56	0.41
1:B:205:ASP:OD1	1:B:205:ASP:O	2.39	0.41
2:C:37:THR:HG22	2:C:38:GLY:N	2.36	0.41
2:C:43:VAL:HG21	2:C:79:LEU:CD1	2.51	0.41
2:C:79:LEU:HA	2:C:82:LEU:HD13	2.03	0.41
2:C:134:LYS:HB3	2:C:143:VAL:HG21	2.03	0.41
2:D:87:TYR:O	2:D:90:THR:N	2.53	0.41
2:D:101:TYR:CD1	2:D:101:TYR:C	2.94	0.41
2:D:109:CYS:HA	2:D:110:PRO:HD3	1.92	0.41
1:A:222:LEU:O	1:A:226:ILE:HG12	2.21	0.41
1:B:40:GLN:HB3	2:C:190:PHE:CE2	2.56	0.41
1:B:57:ILE:CG1	1:B:62:ASN:HA	2.51	0.41
1:B:267:PRO:HA	1:B:270:ASN:ND2	2.36	0.41
1:B:269:PHE:O	1:B:270:ASN:C	2.59	0.41
1:B:306:ARG:CB	1:B:306:ARG:HH11	2.34	0.41
2:C:150:ARG:O	2:C:152:HIS:N	2.51	0.41
1:A:182:TYR:CE1	1:A:210:ASP:HB3	2.55	0.40

*Continued on next page...*



Continued from previous page...

Atom-1	Atom-2	Interatomic distance (Å)	Clash overlap (Å)
1:A:203:LEU:CD1	1:A:242:LEU:HB2	2.44	0.40
1:B:158:LYS:O	1:B:161:ASN:N	2.46	0.40
1:B:227:PHE:CD1	1:B:284:PHE:HB2	2.56	0.40
2:C:87:TYR:O	2:C:90:THR:N	2.54	0.40
2:D:168:PHE:HD2	2:D:175:ARG:HB2	1.85	0.40
1:A:81:GLU:O	1:A:85:LEU:HB2	2.21	0.40
1:A:193:ALA:HB3	1:A:198:LYS:HG2	2.02	0.40
1:A:273:LEU:HB2	1:A:274:GLY:H	1.67	0.40
1:B:267:PRO:O	1:B:270:ASN:CG	2.60	0.40
1:B:273:LEU:HB2	1:B:274:GLY:H	1.70	0.40
1:A:19:ARG:NH1	1:A:23:TYR:CZ	2.88	0.40
1:A:182:TYR:HA	1:A:188:TYR:OH	2.22	0.40
1:B:51:SER:HA	1:B:69:ILE:O	2.22	0.40
1:B:77:LYS:O	1:B:77:LYS:HG2	2.20	0.40
1:B:267:PRO:O	1:B:270:ASN:HB2	2.21	0.40
1:B:301:LEU:HD11	1:B:305:LEU:HD11	2.03	0.40
1:B:306:ARG:HB3	1:B:306:ARG:CZ	2.51	0.40
2:C:27:GLU:O	2:C:28:ASP:C	2.60	0.40
2:C:79:LEU:C	2:C:81:GLY:N	2.73	0.40
2:D:13:PHE:CE1	2:D:77:GLU:HG3	2.56	0.40
2:D:110:PRO:O	2:D:111:ARG:C	2.60	0.40
2:C:8:SER:OG	2:C:10:ILE:HD13	2.21	0.40
2:C:88:ILE:HD11	2:C:159:PHE:O	2.22	0.40
2:C:197:TYR:O	2:C:200:GLN:HB2	2.21	0.40
2:D:87:TYR:CE2	2:D:93:GLY:HA2	2.57	0.40

There are no symmetry-related clashes.

## 5.3 Torsion angles [i](#)

### 5.3.1 Protein backbone [i](#)

In the following table, the Percentiles column shows the percent Ramachandran outliers of the chain as a percentile score with respect to all X-ray entries followed by that with respect to entries of similar resolution.

The Analysed column shows the number of residues for which the backbone conformation was analysed, and the total number of residues.

Mol	Chain	Analysed	Favoured	Allowed	Outliers	Percentiles
1	A	334/337 (99%)	234 (70%)	79 (24%)	21 (6%)	<b>1</b> <b>8</b>

Continued on next page...

*Continued from previous page...*

Mol	Chain	Analysed	Favoured	Allowed	Outliers	Percentiles	
1	B	333/337 (99%)	233 (70%)	76 (23%)	24 (7%)	1	6
2	C	198/215 (92%)	143 (72%)	36 (18%)	19 (10%)	0	3
2	D	202/215 (94%)	142 (70%)	38 (19%)	22 (11%)	0	2
All	All	1067/1104 (97%)	752 (70%)	229 (22%)	86 (8%)	1	5

All (86) Ramachandran outliers are listed below:

Mol	Chain	Res	Type
1	A	4	PRO
1	A	42	VAL
1	A	57	ILE
1	A	61	ASN
1	A	270	ASN
1	B	61	ASN
1	B	95	ILE
1	B	169	ARG
1	B	270	ASN
2	C	8	SER
2	C	47	ARG
2	C	147	LYS
2	C	200	GLN
2	D	7	VAL
2	D	8	SER
2	D	33	LYS
2	D	147	LYS
2	D	200	GLN
1	A	76	LYS
1	A	77	LYS
1	A	95	ILE
1	A	130	ASP
1	A	169	ARG
1	A	262	ASN
1	A	267	PRO
1	A	273	LEU
1	A	315	ALA
1	B	57	ILE
1	B	76	LYS
1	B	77	LYS
1	B	124	LEU
1	B	315	ALA
2	C	33	LYS

*Continued on next page...*

*Continued from previous page...*

<b>Mol</b>	<b>Chain</b>	<b>Res</b>	<b>Type</b>
2	C	48	GLN
2	C	104	GLY
2	C	176	PRO
2	D	40	ASN
2	D	47	ARG
2	D	48	GLN
2	D	191	LYS
1	A	302	ASP
1	A	319	MET
1	B	42	VAL
1	B	262	ASN
1	B	267	PRO
1	B	273	LEU
1	B	281	TRP
1	B	302	ASP
1	B	330	ASP
1	B	332	ALA
2	C	32	ASP
2	C	38	GLY
2	C	90	THR
2	C	151	HIS
2	D	32	ASP
2	D	151	HIS
2	D	176	PRO
1	B	125	TYR
1	B	130	ASP
2	C	63	GLU
2	C	122	ILE
2	D	37	THR
2	D	38	GLY
2	D	62	LEU
2	D	122	ILE
1	A	13	THR
1	A	59	ILE
1	A	120	ASP
1	B	217	SER
1	B	290	GLN
2	C	37	THR
2	C	58	PRO
2	C	88	ILE
2	C	160	GLY
2	D	50	LEU

*Continued on next page...*

*Continued from previous page...*

Mol	Chain	Res	Type
2	D	58	PRO
1	A	12	TYR
1	B	12	TYR
1	B	297	ALA
2	C	194	PRO
2	D	194	PRO
1	B	73	VAL
2	D	88	ILE
1	A	73	VAL
2	D	104	GLY
2	D	121	PRO

### 5.3.2 Protein sidechains [i](#)

In the following table, the Percentiles column shows the percent sidechain outliers of the chain as a percentile score with respect to all X-ray entries followed by that with respect to entries of similar resolution.

The Analysed column shows the number of residues for which the sidechain conformation was analysed, and the total number of residues.

Mol	Chain	Analysed	Rotameric	Outliers	Percentiles	
1	A	308/309 (100%)	289 (94%)	19 (6%)	18	49
1	B	307/309 (99%)	288 (94%)	19 (6%)	18	49
2	C	176/191 (92%)	159 (90%)	17 (10%)	8	30
2	D	180/191 (94%)	157 (87%)	23 (13%)	4	18
All	All	971/1000 (97%)	893 (92%)	78 (8%)	12	40

All (78) residues with a non-rotameric sidechain are listed below:

Mol	Chain	Res	Type
1	A	4	PRO
1	A	10	ARG
1	A	37	ASP
1	A	38	ASP
1	A	39	TYR
1	A	100	ILE
1	A	123	GLN
1	A	124	LEU
1	A	137	MET
1	A	184	PRO

*Continued on next page...*

*Continued from previous page...*

<b>Mol</b>	<b>Chain</b>	<b>Res</b>	<b>Type</b>
1	A	249	LEU
1	A	252	GLU
1	A	256	ASP
1	A	258	ILE
1	A	275	ARG
1	A	306	ARG
1	A	322	PRO
1	A	326	THR
1	A	334	MET
1	B	10	ARG
1	B	37	ASP
1	B	38	ASP
1	B	39	TYR
1	B	43	ARG
1	B	100	ILE
1	B	120	ASP
1	B	126	GLN
1	B	137	MET
1	B	184	PRO
1	B	230	GLU
1	B	249	LEU
1	B	252	GLU
1	B	256	ASP
1	B	275	ARG
1	B	306	ARG
1	B	322	PRO
1	B	333	ARG
1	B	334	MET
2	C	7	VAL
2	C	26	ASP
2	C	61	GLU
2	C	62	LEU
2	C	63	GLU
2	C	67	ASN
2	C	72	ILE
2	C	78	MET
2	C	101	TYR
2	C	105	ASP
2	C	130	GLU
2	C	193	HIS
2	C	194	PRO
2	C	199	LEU

*Continued on next page...*

*Continued from previous page...*

<b>Mol</b>	<b>Chain</b>	<b>Res</b>	<b>Type</b>
2	C	200	GLN
2	C	201	LEU
2	C	202	GLN
2	D	6	GLU
2	D	16	LEU
2	D	26	ASP
2	D	28	ASP
2	D	59	ASP
2	D	60	GLU
2	D	61	GLU
2	D	62	LEU
2	D	67	ASN
2	D	71	LEU
2	D	72	ILE
2	D	78	MET
2	D	91	ASN
2	D	92	ARG
2	D	101	TYR
2	D	149	SER
2	D	184	VAL
2	D	194	PRO
2	D	195	MET
2	D	197	TYR
2	D	200	GLN
2	D	201	LEU
2	D	202	GLN

Sometimes sidechains can be flipped to improve hydrogen bonding and reduce clashes. All (40) such sidechains are listed below:

<b>Mol</b>	<b>Chain</b>	<b>Res</b>	<b>Type</b>
1	A	35	ASN
1	A	36	GLN
1	A	93	ASN
1	A	126	GLN
1	A	148	HIS
1	A	186	GLN
1	A	270	ASN
1	A	291	HIS
1	A	310	GLN
1	A	331	GLN
1	B	35	ASN
1	B	36	GLN

*Continued on next page...*

*Continued from previous page...*

Mol	Chain	Res	Type
1	B	40	GLN
1	B	93	ASN
1	B	126	GLN
1	B	148	HIS
1	B	183	HIS
1	B	186	GLN
1	B	270	ASN
1	B	286	HIS
1	B	291	HIS
1	B	310	GLN
2	C	19	ASN
2	C	48	GLN
2	C	67	ASN
2	C	68	GLN
2	C	74	GLN
2	C	96	GLN
2	C	165	HIS
2	C	182	GLN
2	C	193	HIS
2	C	200	GLN
2	C	202	GLN
2	D	19	ASN
2	D	67	ASN
2	D	68	GLN
2	D	74	GLN
2	D	165	HIS
2	D	182	GLN
2	D	200	GLN

### 5.3.3 RNA [i](#)

There are no RNA molecules in this entry.

### 5.4 Non-standard residues in protein, DNA, RNA chains [i](#)

There are no non-standard protein/DNA/RNA residues in this entry.

### 5.5 Carbohydrates [i](#)

There are no monosaccharides in this entry.

## 5.6 Ligand geometry

Of 10 ligands modelled in this entry, 2 are monoatomic - leaving 8 for Mogul analysis.

In the following table, the Counts columns list the number of bonds (or angles) for which Mogul statistics could be retrieved, the number of bonds (or angles) that are observed in the model and the number of bonds (or angles) that are defined in the Chemical Component Dictionary. The Link column lists molecule types, if any, to which the group is linked. The Z score for a bond length (or angle) is the number of standard deviations the observed value is removed from the expected value. A bond length (or angle) with  $|Z| > 2$  is considered an outlier worth inspection. RMSZ is the root-mean-square of all Z scores of the bond lengths (or angles).

Mol	Type	Chain	Res	Link	Bond lengths			Bond angles		
					Counts	RMSZ	# Z  > 2	Counts	RMSZ	# Z  > 2
3	PO4	D	354	-	4,4,4	1.60	0	6,6,6	0.45	0
3	PO4	A	350	-	4,4,4	1.62	0	6,6,6	0.38	0
3	PO4	D	356	-	4,4,4	1.69	0	6,6,6	0.45	0
3	PO4	C	353	-	4,4,4	1.65	0	6,6,6	0.51	0
3	PO4	D	355	-	4,4,4	1.64	0	6,6,6	0.45	0
4	ANP	A	340	-	29,33,33	2.36	9 (31%)	31,52,52	2.97	14 (45%)
3	PO4	B	352	-	4,4,4	1.61	0	6,6,6	0.53	0
3	PO4	B	351	-	4,4,4	1.69	0	6,6,6	0.44	0

In the following table, the Chirals column lists the number of chiral outliers, the number of chiral centers analysed, the number of these observed in the model and the number defined in the Chemical Component Dictionary. Similar counts are reported in the Torsion and Rings columns. '–' means no outliers of that kind were identified.

Mol	Type	Chain	Res	Link	Chirals	Torsions	Rings
4	ANP	A	340	-	-	4/14/38/38	0/3/3/3

All (9) bond length outliers are listed below:

Mol	Chain	Res	Type	Atoms	Z	Observed(Å)	Ideal(Å)
4	A	340	ANP	PB-O3A	-7.31	1.49	1.59
4	A	340	ANP	C2-N1	4.73	1.42	1.33
4	A	340	ANP	C4-N3	4.10	1.41	1.35
4	A	340	ANP	PG-O3G	-3.75	1.46	1.56
4	A	340	ANP	C2-N3	3.30	1.37	1.32
4	A	340	ANP	C8-N7	-3.00	1.29	1.34
4	A	340	ANP	PA-O2A	-2.61	1.43	1.55
4	A	340	ANP	PB-O2B	-2.32	1.50	1.56
4	A	340	ANP	C5-N7	-2.07	1.32	1.39

All (14) bond angle outliers are listed below:



Mol	Chain	Res	Type	Atoms	Z	Observed(°)	Ideal(°)
4	A	340	ANP	O1B-PB-N3B	-8.59	99.12	111.77
4	A	340	ANP	PB-O3A-PA	7.14	157.75	132.62
4	A	340	ANP	C4-C5-N7	4.96	114.57	109.40
4	A	340	ANP	O1G-PG-N3B	4.52	118.43	111.77
4	A	340	ANP	N3-C2-N1	-3.57	123.09	128.68
4	A	340	ANP	C1'-N9-C4	3.41	132.63	126.64
4	A	340	ANP	O2B-PB-O3A	3.39	115.97	104.64
4	A	340	ANP	O3A-PB-N3B	-3.33	97.35	106.59
4	A	340	ANP	O2G-PG-O1G	-2.98	105.97	113.45
4	A	340	ANP	C3'-C2'-C1'	2.74	105.11	100.98
4	A	340	ANP	O3'-C3'-C2'	2.73	120.64	111.82
4	A	340	ANP	C5-C6-N6	2.59	124.29	120.35
4	A	340	ANP	O2'-C2'-C3'	2.54	120.05	111.82
4	A	340	ANP	O5'-C5'-C4'	2.46	117.46	108.99

There are no chirality outliers.

All (4) torsion outliers are listed below:

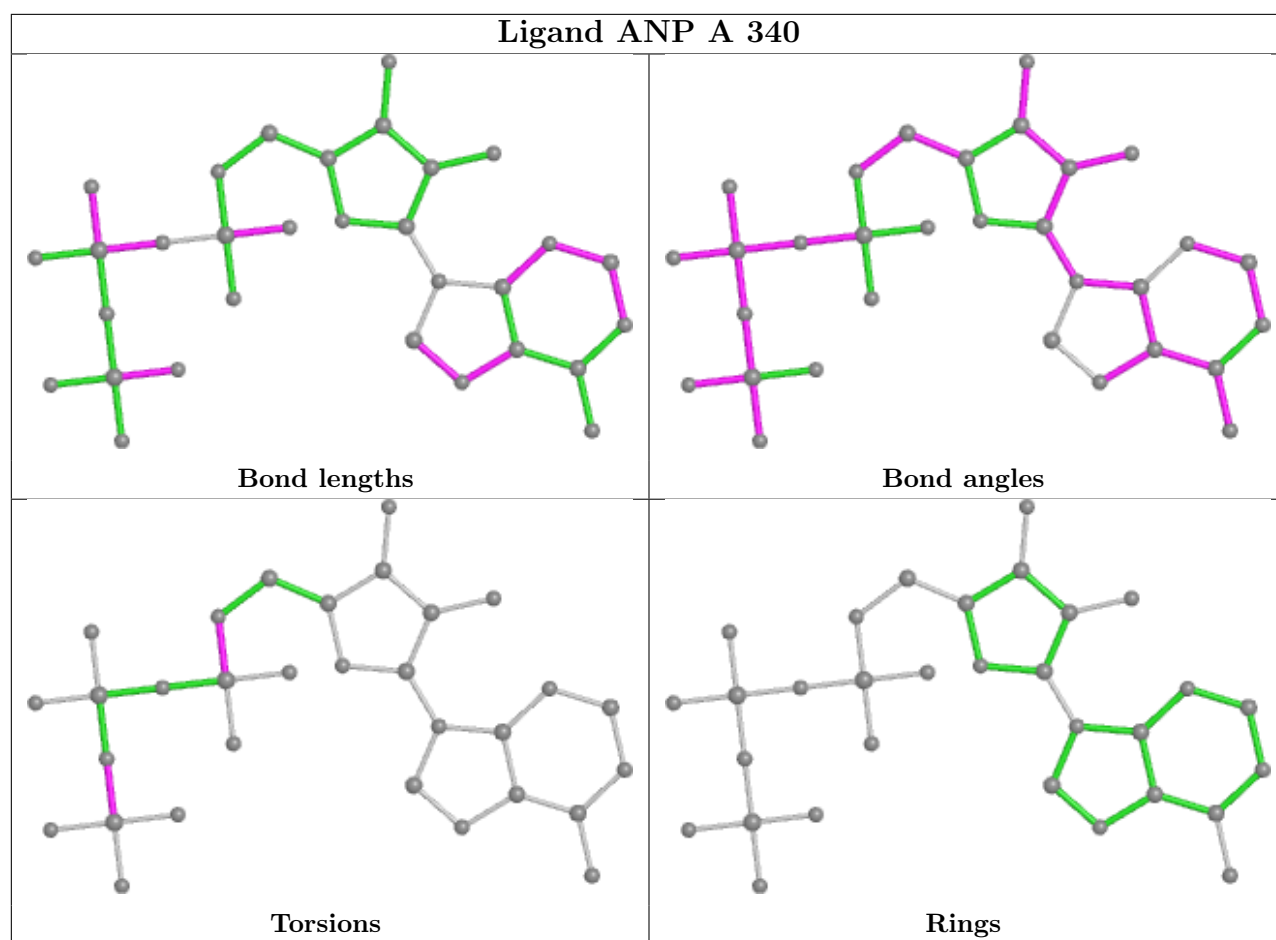
Mol	Chain	Res	Type	Atoms
4	A	340	ANP	PB-N3B-PG-O1G
4	A	340	ANP	C5'-O5'-PA-O1A
4	A	340	ANP	C5'-O5'-PA-O2A
4	A	340	ANP	C5'-O5'-PA-O3A

There are no ring outliers.

1 monomer is involved in 1 short contact:

Mol	Chain	Res	Type	Clashes	Symm-Clashes
4	A	340	ANP	1	0

The following is a two-dimensional graphical depiction of Mogul quality analysis of bond lengths, bond angles, torsion angles, and ring geometry for all instances of the Ligand of Interest. In addition, ligands with molecular weight > 250 and outliers as shown on the validation Tables will also be included. For torsion angles, if less than 5% of the Mogul distribution of torsion angles is within 10 degrees of the torsion angle in question, then that torsion angle is considered an outlier. Any bond that is central to one or more torsion angles identified as an outlier by Mogul will be highlighted in the graph. For rings, the root-mean-square deviation (RMSD) between the ring in question and similar rings identified by Mogul is calculated over all ring torsion angles. If the average RMSD is greater than 60 degrees and the minimal RMSD between the ring in question and any Mogul-identified rings is also greater than 60 degrees, then that ring is considered an outlier. The outliers are highlighted in purple. The color gray indicates Mogul did not find sufficient equivalents in the CSD to analyse the geometry.



## 5.7 Other polymers [i](#)

There are no such residues in this entry.

## 5.8 Polymer linkage issues [i](#)

There are no chain breaks in this entry.

## 6 Fit of model and data [i](#)

### 6.1 Protein, DNA and RNA chains [i](#)

In the following table, the column labelled ‘#RSRZ > 2’ contains the number (and percentage) of RSRZ outliers, followed by percent RSRZ outliers for the chain as percentile scores relative to all X-ray entries and entries of similar resolution. The OWAB column contains the minimum, median, 95<sup>th</sup> percentile and maximum values of the occupancy-weighted average B-factor per residue. The column labelled ‘Q < 0.9’ lists the number of (and percentage) of residues with an average occupancy less than 0.9.

Mol	Chain	Analysed	<RSRZ>	#RSRZ>2	OWAB(Å <sup>2</sup> )	Q<0.9
1	A	336/337 (99%)	-0.18	4 (1%) 79 61	25, 75, 125, 147	0
1	B	335/337 (99%)	-0.27	1 (0%) 94 88	30, 78, 128, 194	0
2	C	200/215 (93%)	0.18	9 (4%) 33 16	51, 111, 185, 216	0
2	D	204/215 (94%)	0.05	2 (0%) 82 67	50, 96, 153, 204	0
All	All	1075/1104 (97%)	-0.10	16 (1%) 73 54	25, 87, 149, 216	0

All (16) RSRZ outliers are listed below:

Mol	Chain	Res	Type	RSRZ
2	C	56	LEU	4.0
2	C	31	GLN	3.9
2	C	174	TYR	3.5
2	C	124	LEU	3.2
2	C	58	PRO	3.0
1	A	87	ASN	2.7
2	C	57	GLU	2.7
2	D	158	TYR	2.6
2	C	43	VAL	2.5
1	A	76	LYS	2.4
2	C	205	SER	2.3
2	C	116	ASN	2.2
1	B	125	TYR	2.1
2	D	146	PRO	2.1
1	A	51	SER	2.1
1	A	50	TYR	2.1

### 6.2 Non-standard residues in protein, DNA, RNA chains [i](#)

There are no non-standard protein/DNA/RNA residues in this entry.

### 6.3 Carbohydrates [i](#)

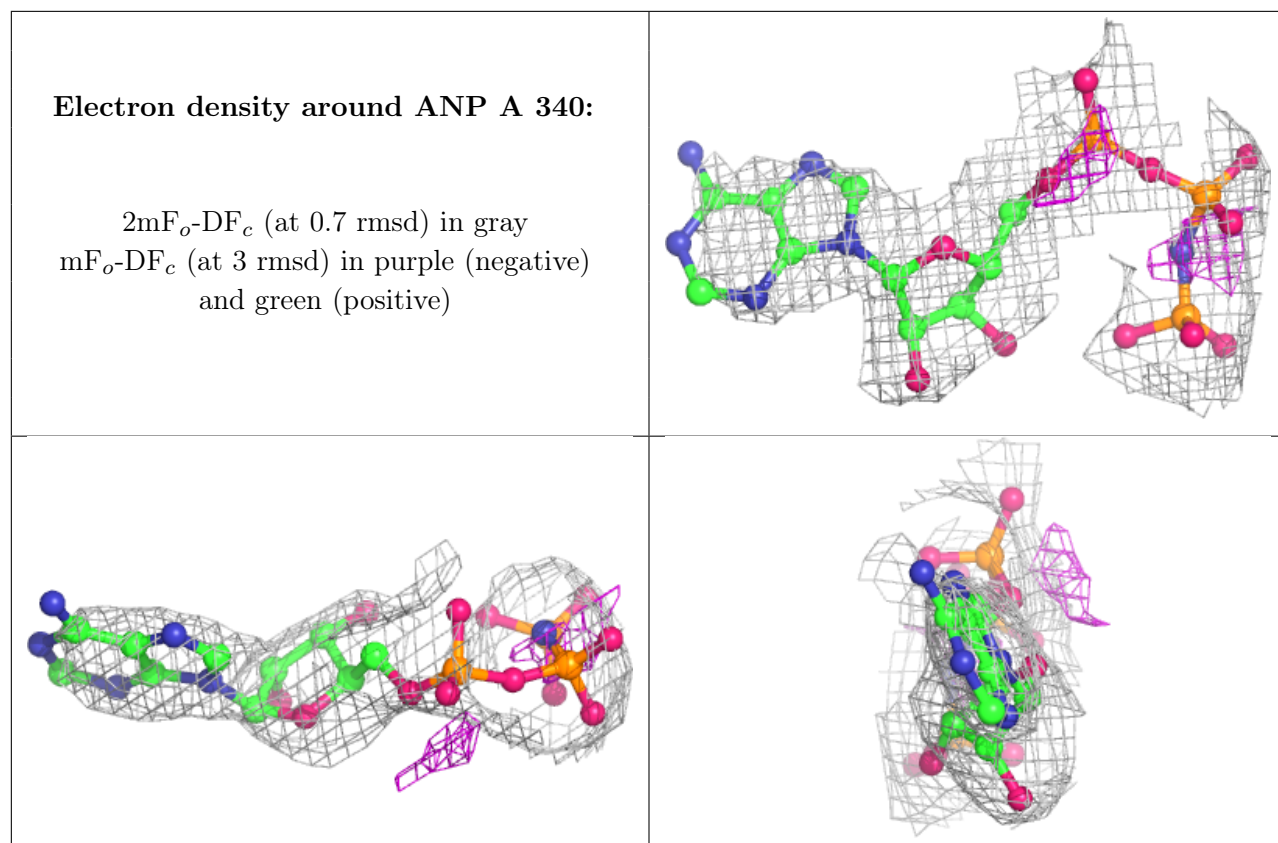
There are no monosaccharides in this entry.

### 6.4 Ligands [i](#)

In the following table, the Atoms column lists the number of modelled atoms in the group and the number defined in the chemical component dictionary. The B-factors column lists the minimum, median, 95<sup>th</sup> percentile and maximum values of B factors of atoms in the group. The column labelled 'Q< 0.9' lists the number of atoms with occupancy less than 0.9.

Mol	Type	Chain	Res	Atoms	RSCC	RSR	B-factors(Å <sup>2</sup> )	Q<0.9
3	PO4	B	351	5/5	0.76	0.18	157,159,164,166	0
4	ANP	A	340	31/31	0.79	0.30	73,121,171,174	0
3	PO4	D	356	5/5	0.81	0.19	137,147,148,159	0
3	PO4	C	353	5/5	0.84	0.18	150,151,163,167	0
3	PO4	D	354	5/5	0.84	0.12	117,118,143,155	0
3	PO4	A	350	5/5	0.89	0.27	74,91,127,133	0
3	PO4	D	355	5/5	0.93	0.10	115,118,132,143	0
3	PO4	B	352	5/5	0.94	0.15	66,124,142,144	0
5	ZN	C	357	1/1	0.98	0.12	73,73,73,73	0
5	ZN	D	358	1/1	0.99	0.13	72,72,72,72	0

The following is a graphical depiction of the model fit to experimental electron density of all instances of the Ligand of Interest. In addition, ligands with molecular weight > 250 and outliers as shown on the geometry validation Tables will also be included. Each fit is shown from different orientation to approximate a three-dimensional view.



## 6.5 Other polymers [i](#)

There are no such residues in this entry.