



# Full wwPDB X-ray Structure Validation Report ⓘ

Aug 6, 2020 – 06:45 PM BST

PDB ID : 1JWL  
Title : Structure of the Dimeric lac Repressor/Operator O1/ONPF Complex  
Authors : Bell, C.E.; Lewis, M.  
Deposited on : 2001-09-04  
Resolution : 4.00 Å(reported)

This is a Full wwPDB X-ray Structure Validation Report for a publicly released PDB entry.

We welcome your comments at [validation@mail.wwpdb.org](mailto:validation@mail.wwpdb.org)

A user guide is available at

<https://www.wwpdb.org/validation/2017/XrayValidationReportHelp>

with specific help available everywhere you see the ⓘ symbol.

---

The following versions of software and data (see [references ⓘ](#)) were used in the production of this report:

MolProbity : 4.02b-467  
Mogul : 1.8.5 (274361), CSD as541be (2020)  
Xtrriage (Phenix) : **NOT EXECUTED**  
EDS : **NOT EXECUTED**  
buster-report : 1.1.7 (2018)  
Percentile statistics : 20191225.v01 (using entries in the PDB archive December 25th 2019)  
Ideal geometry (proteins) : Engh & Huber (2001)  
Ideal geometry (DNA, RNA) : Parkinson et al. (1996)  
Validation Pipeline (wwPDB-VP) : 2.13.1

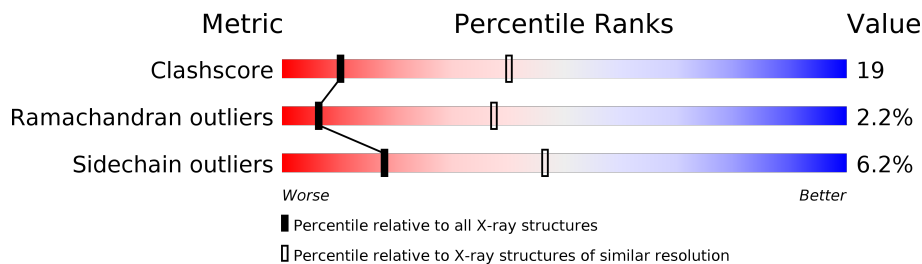
# 1 Overall quality at a glance

The following experimental techniques were used to determine the structure:

*X-RAY DIFFRACTION*

The reported resolution of this entry is 4.00 Å.

Percentile scores (ranging between 0-100) for global validation metrics of the entry are shown in the following graphic. The table shows the number of entries on which the scores are based.



Metric	Whole archive (#Entries)	Similar resolution (#Entries, resolution range(Å))
Clashscore	141614	1148 (4.30-3.70)
Ramachandran outliers	138981	1108 (4.30-3.70)
Sidechain outliers	138945	1099 (4.30-3.70)

The table below summarises the geometric issues observed across the polymeric chains and their fit to the electron density. The red, orange, yellow and green segments on the lower bar indicate the fraction of residues that contain outliers for  $\geq 3$ , 2, 1 and 0 types of geometric quality criteria respectively. A grey segment represents the fraction of residues that are not modelled. The numeric value for each fraction is indicated below the corresponding segment, with a dot representing fractions  $\leq 5\%$ .

Note EDS was not executed.

Mol	Chain	Length	Quality of chain
1	D	23	
2	E	23	
3	A	333	
3	B	333	
3	C	333	

## 2 Entry composition i

There are 4 unique types of molecules in this entry. The entry contains 7272 atoms, of which 0 are hydrogens and 0 are deuteriums.

In the tables below, the ZeroOcc column contains the number of atoms modelled with zero occupancy, the AltConf column contains the number of residues with at least one atom in alternate conformation and the Trace column contains the number of residues modelled with at most 2 atoms.

- Molecule 1 is a DNA chain called 5'-D(\*AP\*GP\*AP\*AP\*T\*TP\*GP\*TP\*GP\*AP\*GP\*CP\*GP\*GP\*AP\*TP\*AP\*AP\*CP\*AP\*AP\*TP\*T)-3'.

Mol	Chain	Residues	Atoms					ZeroOcc	AltConf	Trace
			Total	C	N	O	P			
1	D	14	289	138	57	81	13	0	0	0

- Molecule 2 is a DNA chain called 5'-D(\*TP\*AP\*AP\*TP\*TP\*GP\*TP\*TP\*AP\*TP\*CP\*CP\*GP\*CP\*TP\*CP\*AP\*CP\*AP\*AP\*TP\*TP\*C)-3'.

Mol	Chain	Residues	Atoms					ZeroOcc	AltConf	Trace
			Total	C	N	O	P			
2	E	14	282	135	48	85	14	0	0	0

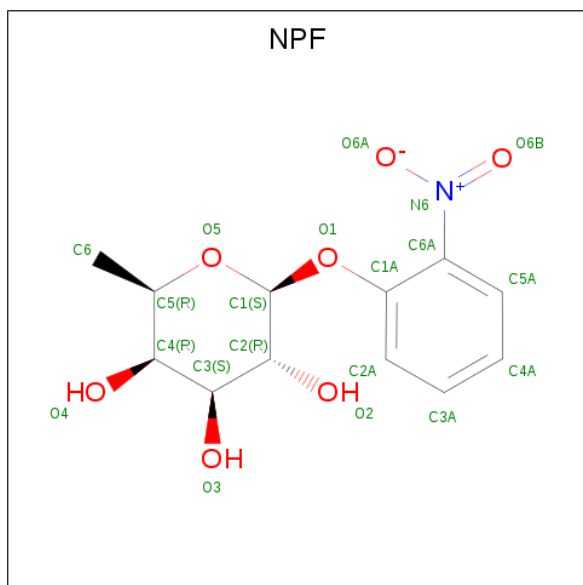
- Molecule 3 is a protein called Lactose Operon Repressor.

Mol	Chain	Residues	Atoms					ZeroOcc	AltConf	Trace
			Total	C	N	O	S			
3	A	329	2313	1439	416	448	10	0	0	0
3	B	329	2313	1439	416	448	10	0	0	0
3	C	269	2015	1261	356	388	10	0	0	0

There are 3 discrepancies between the modelled and reference sequences:

Chain	Residue	Modelled	Actual	Comment	Reference
A	109	THR	ALA	SEE REMARK 999	UNP P03023
B	109	THR	ALA	SEE REMARK 999	UNP P03023
C	109	THR	ALA	SEE REMARK 999	UNP P03023

- Molecule 4 is 2-nitrophenyl beta-D-fucopyranoside (three-letter code: NPF) (formula: C<sub>12</sub>H<sub>15</sub>NO<sub>7</sub>).



Mol	Chain	Residues	Atoms				ZeroOcc	AltConf
4	A	1	Total	C	N	O	0	0
			20	12	1	7		
4	B	1	Total	C	N	O	0	0
			20	12	1	7		
4	C	1	Total	C	N	O	0	0
			20	12	1	7		

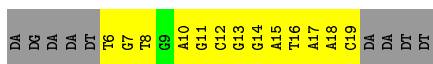
### 3 Residue-property plots

These plots are drawn for all protein, RNA, DNA and oligosaccharide chains in the entry. The first graphic for a chain summarises the proportions of the various outlier classes displayed in the second graphic. The second graphic shows the sequence view annotated by issues in geometry. Residues are color-coded according to the number of geometric quality criteria for which they contain at least one outlier: green = 0, yellow = 1, orange = 2 and red = 3 or more. Stretches of 2 or more consecutive residues without any outlier are shown as a green connector. Residues present in the sample, but not in the model, are shown in grey.

Note EDS was not executed.

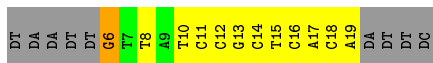
- Molecule 1: 5'-D(\*AP\*GP\*AP\*AP\*T\*TP\*GP\*TP\*GP\*AP\*GP\*CP\*GP\*GP\*AP\*TP\*AP\*A P\*CP\*AP\*AP\*TP\*T)-3'

Chain D: 



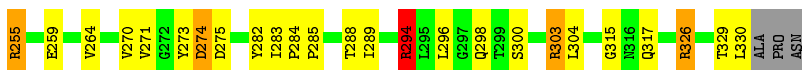
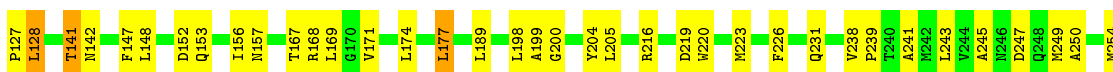
- Molecule 2: 5'-D(\*TP\*AP\*AP\*TP\*TP\*GP\*TP\*TP\*AP\*TP\*CP\*CP\*GP\*CP\*TP\*CP\*AP\*C P\*AP\*AP\*TP\*TP\*C)-3'

Chain E: 



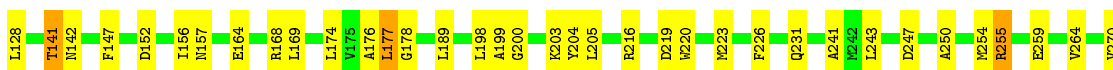
- Molecule 3: Lactose Operon Repressor

Chain A: 



- Molecule 3: Lactose Operon Repressor

Chain B: 





- Molecule 3: Lactose Operon Repressor

Chain C: 57% 20% 19%



## 4 Data and refinement statistics

Xtrriage (Phenix) and EDS were not executed - this section is therefore incomplete.

Property	Value	Source
Space group	H 3 2	Depositor
Cell constants a, b, c, $\alpha$ , $\beta$ , $\gamma$	255.77Å 255.77Å 206.79Å 90.00° 90.00° 120.00°	Depositor
Resolution (Å)	9.99 - 4.00	Depositor
% Data completeness (in resolution range)	96.1 (9.99-4.00)	Depositor
$R_{merge}$	(Not available)	Depositor
$R_{sym}$	0.11	Depositor
Refinement program	CNS 1.0	Depositor
R, $R_{free}$	0.249 , 0.261	Depositor
Estimated twinning fraction	No twinning to report.	Xtrriage
Total number of atoms	7272	wwPDB-VP
Average B, all atoms (Å <sup>2</sup> )	67.0	wwPDB-VP

## 5 Model quality i

### 5.1 Standard geometry i

Bond lengths and bond angles in the following residue types are not validated in this section: NPF

The Z score for a bond length (or angle) is the number of standard deviations the observed value is removed from the expected value. A bond length (or angle) with  $|Z| > 5$  is considered an outlier worth inspection. RMSZ is the root-mean-square of all Z scores of the bond lengths (or angles).

Mol	Chain	Bond lengths		Bond angles	
		RMSZ	# Z  >5	RMSZ	# Z  >5
1	D	0.65	0/325	0.79	0/501
2	E	0.83	1/314 (0.3%)	1.20	5/481 (1.0%)
3	A	0.52	1/2340 (0.0%)	0.79	7/3192 (0.2%)
3	B	0.54	1/2340 (0.0%)	0.95	8/3192 (0.3%)
3	C	0.46	0/2042	0.77	5/2776 (0.2%)
All	All	0.53	3/7361 (0.0%)	0.86	25/10142 (0.2%)

Chiral center outliers are detected by calculating the chiral volume of a chiral center and verifying if the center is modelled as a planar moiety or with the opposite hand. A planarity outlier is detected by checking planarity of atoms in a peptide group, atoms in a mainchain group or atoms of a sidechain that are expected to be planar.

Mol	Chain	#Chirality outliers	#Planarity outliers
2	E	1	0

All (3) bond length outliers are listed below:

Mol	Chain	Res	Type	Atoms	Z	Observed(Å)	Ideal(Å)
3	A	2	LYS	CA-CB	-7.08	1.38	1.53
3	B	45	LEU	C-O	7.01	1.36	1.23
2	E	6	DG	C5-C6	5.69	1.48	1.42

All (25) bond angle outliers are listed below:

Mol	Chain	Res	Type	Atoms	Z	Observed(°)	Ideal(°)
3	B	303	ARG	NE-CZ-NH1	-19.16	110.72	120.30
3	B	303	ARG	NE-CZ-NH2	16.57	128.58	120.30
3	B	294	ARG	NE-CZ-NH1	-16.45	112.08	120.30
3	B	294	ARG	NE-CZ-NH2	15.60	128.10	120.30
3	C	303	ARG	NE-CZ-NH2	-10.66	114.97	120.30

*Continued on next page...*



Continued from previous page...

Mol	Chain	Res	Type	Atoms	Z	Observed(°)	Ideal(°)
3	A	303	ARG	NE-CZ-NH2	-9.97	115.31	120.30
3	C	303	ARG	NE-CZ-NH1	9.46	125.03	120.30
3	A	303	ARG	NE-CZ-NH1	9.40	125.00	120.30
3	B	303	ARG	CD-NE-CZ	9.13	136.39	123.60
3	A	294	ARG	NE-CZ-NH2	-8.90	115.85	120.30
3	C	294	ARG	NE-CZ-NH2	-8.80	115.90	120.30
3	C	294	ARG	NE-CZ-NH1	8.42	124.51	120.30
2	E	10	DT	N1-C1'-C2'	8.36	128.48	112.60
3	A	294	ARG	NE-CZ-NH1	8.02	124.31	120.30
2	E	10	DT	O4'-C1'-N1	7.53	113.27	108.00
2	E	6	DG	O4'-C1'-N9	7.32	113.12	108.00
3	A	27	ALA	N-CA-C	6.89	129.60	111.00
3	B	294	ARG	CD-NE-CZ	6.48	132.67	123.60
3	A	2	LYS	N-CA-CB	-6.32	99.22	110.60
2	E	10	DT	O4'-C1'-C2'	5.63	110.41	105.90
2	E	6	DG	C5'-C4'-C3'	-5.36	104.45	114.10
3	B	2	LYS	N-CA-CB	-5.32	101.03	110.60
3	A	303	ARG	CD-NE-CZ	5.23	130.92	123.60
3	B	27	ALA	N-CA-C	5.21	125.08	111.00
3	C	303	ARG	CD-NE-CZ	5.17	130.84	123.60

All (1) chirality outliers are listed below:

Mol	Chain	Res	Type	Atom
2	E	10	DT	C1'

There are no planarity outliers.

## 5.2 Too-close contacts [\(i\)](#)

In the following table, the Non-H and H(model) columns list the number of non-hydrogen atoms and hydrogen atoms in the chain respectively. The H(added) column lists the number of hydrogen atoms added and optimized by MolProbity. The Clashes column lists the number of clashes within the asymmetric unit, whereas Symm-Clashes lists symmetry related clashes.

Mol	Chain	Non-H	H(model)	H(added)	Clashes	Symm-Clashes
1	D	289	0	159	21	0
2	E	282	0	159	24	0
3	A	2313	0	2207	78	0
3	B	2313	0	2207	86	0
3	C	2015	0	2060	74	0

Continued on next page...

*Continued from previous page...*

Mol	Chain	Non-H	H(model)	H(added)	Clashes	Symm-Clashes
4	A	20	0	0	0	0
4	B	20	0	0	1	0
4	C	20	0	0	2	0
All	All	7272	0	6792	263	0

The all-atom clashscore is defined as the number of clashes found per 1000 atoms (including hydrogen atoms). The all-atom clashscore for this structure is 19.

All (263) close contacts within the same asymmetric unit are listed below, sorted by their clash magnitude.

Atom-1	Atom-2	Interatomic distance (Å)	Clash overlap (Å)
1:D:13:DG:H1'	1:D:14:DG:H5''	1.36	1.03
2:E:13:DG:H1'	2:E:14:DC:H5''	1.44	0.99
1:D:15:DA:H2''	1:D:16:DT:H5''	1.44	0.98
2:E:15:DT:H2''	2:E:16:DC:H5''	1.43	0.98
3:A:45:LEU:O	3:A:46:ASN:CB	2.12	0.96
3:C:114:LEU:HD23	3:C:122:LEU:HD22	1.64	0.80
3:A:62:LEU:H	3:A:62:LEU:HD23	1.47	0.80
3:A:62:LEU:H	3:A:62:LEU:CD2	1.96	0.79
3:A:303:ARG:NH2	3:A:317:GLN:HB2	1.98	0.79
3:B:325:LYS:HD3	3:C:178:GLY:HA3	1.66	0.78
2:E:6:DG:OP1	3:B:29:HIS:C	2.22	0.78
3:A:114:LEU:HD23	3:A:122:LEU:HD22	1.67	0.76
3:C:303:ARG:NH2	3:C:317:GLN:HB2	2.01	0.76
3:B:114:LEU:HD23	3:B:122:LEU:HD22	1.68	0.73
1:D:13:DG:C1'	1:D:14:DG:H5''	2.18	0.72
3:B:45:LEU:O	3:B:46:ASN:CB	2.36	0.72
3:A:62:LEU:HD23	3:A:62:LEU:N	2.04	0.72
3:C:111:VAL:HG13	3:C:122:LEU:CD1	2.20	0.71
3:A:111:VAL:HG13	3:A:122:LEU:CD1	2.20	0.71
3:A:157:ASN:HA	3:A:315:GLY:O	1.91	0.71
3:B:111:VAL:HG13	3:B:122:LEU:CD1	2.22	0.69
3:B:147:PHE:CD1	3:B:156:ILE:HD12	2.28	0.69
3:B:63:LEU:HD13	3:B:119:VAL:HG12	1.73	0.69
3:C:157:ASN:HA	3:C:315:GLY:O	1.92	0.69
2:E:11:DC:H2''	2:E:12:DC:OP2	1.93	0.68
2:E:15:DT:C2'	2:E:16:DC:H5''	2.19	0.68
3:A:63:LEU:HD13	3:A:119:VAL:HG12	1.77	0.67
3:C:63:LEU:HD13	3:C:119:VAL:HG12	1.74	0.67
3:A:147:PHE:CD1	3:A:156:ILE:HD12	2.30	0.66
3:B:174:LEU:HD12	3:B:243:LEU:HD21	1.77	0.66

*Continued on next page...*

*Continued from previous page...*

Atom-1	Atom-2	Interatomic distance (Å)	Clash overlap (Å)
3:B:157:ASN:HA	3:B:315:GLY:O	1.94	0.66
3:C:168:ARG:HG3	3:C:204:TYR:CD2	2.30	0.66
3:C:219:ASP:O	3:C:220:TRP:HB2	1.95	0.66
3:A:219:ASP:O	3:A:220:TRP:HB2	1.94	0.65
1:D:6:DT:H2''	1:D:7:DG:C8	2.31	0.65
3:B:219:ASP:O	3:B:220:TRP:HB2	1.96	0.65
3:C:147:PHE:CD1	3:C:156:ILE:HD12	2.30	0.65
3:B:174:LEU:CD1	3:B:243:LEU:HD21	2.27	0.65
3:C:174:LEU:HD12	3:C:243:LEU:HD21	1.79	0.64
3:B:303:ARG:HH22	3:B:317:GLN:HB2	1.61	0.64
3:B:325:LYS:CE	3:C:178:GLY:HA3	2.27	0.64
2:E:14:DC:H2'	2:E:15:DT:H72	1.80	0.64
3:B:325:LYS:CD	3:C:178:GLY:HA3	2.28	0.64
3:C:174:LEU:CD1	3:C:243:LEU:HD21	2.28	0.63
3:B:168:ARG:HG3	3:B:204:TYR:CD2	2.33	0.63
3:B:303:ARG:NH2	3:B:317:GLN:HB2	2.14	0.63
1:D:7:DG:H2''	1:D:8:DT:H5'	1.79	0.63
3:A:168:ARG:HG3	3:A:204:TYR:CD2	2.34	0.62
2:E:8:DT:C7	3:B:18:GLN:CB	2.78	0.62
2:E:13:DG:C1'	2:E:14:DC:H5''	2.26	0.62
2:E:17:DA:H1'	2:E:18:DC:C5'	2.30	0.62
1:D:15:DA:C2'	1:D:16:DT:H5''	2.24	0.61
3:A:303:ARG:HH21	3:A:317:GLN:HB2	1.65	0.61
3:A:82:ALA:HA	3:A:294:ARG:NH2	2.15	0.61
3:B:216:ARG:HH21	3:B:231:GLN:HE21	1.48	0.61
3:C:273:TYR:O	3:C:274:ASP:HB2	2.01	0.60
3:C:216:ARG:HH21	3:C:231:GLN:HE21	1.49	0.60
1:D:6:DT:H2''	1:D:7:DG:N7	2.17	0.60
2:E:14:DC:C2'	2:E:15:DT:H72	2.32	0.60
3:A:61:SER:O	3:A:63:LEU:N	2.35	0.60
3:A:174:LEU:HD12	3:A:243:LEU:HD21	1.82	0.59
3:A:254:MET:HE3	3:A:264:VAL:HG11	1.85	0.59
3:C:273:TYR:O	3:C:274:ASP:CB	2.51	0.59
3:A:107:CYS:O	3:A:111:VAL:HG23	2.03	0.59
2:E:6:DG:OP1	3:B:30:VAL:N	2.35	0.59
2:E:6:DG:OP1	3:B:29:HIS:O	2.21	0.58
3:A:216:ARG:HH21	3:A:231:GLN:HE21	1.50	0.58
3:A:174:LEU:CD1	3:A:243:LEU:HD21	2.33	0.58
3:B:254:MET:HE3	3:B:264:VAL:HG11	1.84	0.58
3:B:71:LEU:HD21	3:B:80:VAL:HG21	1.84	0.58
3:A:273:TYR:O	3:A:274:ASP:HB2	2.04	0.58

*Continued on next page...*

*Continued from previous page...*

Atom-1	Atom-2	Interatomic distance (Å)	Clash overlap (Å)
3:C:274:ASP:OD2	4:C:334:NPF:O6B	2.21	0.57
3:C:329:THR:O	3:C:330:LEU:HD23	2.05	0.57
3:C:303:ARG:HH21	3:C:317:GLN:HB2	1.71	0.56
3:C:254:MET:HE3	3:C:264:VAL:HG11	1.86	0.56
3:B:22:ARG:CA	3:B:27:ALA:HB2	2.35	0.56
3:A:273:TYR:O	3:A:274:ASP:CB	2.54	0.56
2:E:17:DA:H1'	2:E:18:DC:H5''	1.87	0.56
3:C:111:VAL:HG13	3:C:122:LEU:HD11	1.86	0.56
2:E:8:DT:H72	3:B:18:GLN:CB	2.36	0.55
3:C:107:CYS:O	3:C:111:VAL:HG23	2.06	0.55
3:B:107:CYS:O	3:B:111:VAL:HG23	2.06	0.55
3:B:273:TYR:O	3:B:274:ASP:HB2	2.07	0.55
3:B:176:ALA:HB1	3:C:177:LEU:HD13	1.88	0.55
3:B:111:VAL:HG13	3:B:122:LEU:HD11	1.89	0.55
3:C:168:ARG:HG3	3:C:204:TYR:CE2	2.43	0.54
3:C:82:ALA:HA	3:C:294:ARG:NH2	2.23	0.54
3:A:255:ARG:HH11	3:A:259:GLU:CD	2.10	0.54
3:B:275:ASP:HA	3:B:288:THR:HG21	1.88	0.54
3:B:273:TYR:O	3:B:274:ASP:CB	2.56	0.54
3:A:275:ASP:HA	3:A:288:THR:HG21	1.87	0.54
3:C:62:LEU:HD23	3:C:62:LEU:N	2.23	0.54
3:A:111:VAL:HG13	3:A:122:LEU:HD11	1.88	0.53
3:C:255:ARG:HH11	3:C:259:GLU:CD	2.12	0.53
3:C:63:LEU:CD1	3:C:119:VAL:HG12	2.39	0.53
3:A:250:ALA:O	3:A:254:MET:HG3	2.09	0.53
3:B:22:ARG:C	3:B:27:ALA:HB2	2.29	0.53
3:B:63:LEU:CD1	3:B:119:VAL:HG12	2.38	0.53
1:D:13:DG:N2	3:B:57:ALA:HB2	2.24	0.53
3:A:282:TYR:O	3:A:284:PRO:C	2.47	0.53
3:B:274:ASP:OD2	4:B:334:NPF:O6B	2.25	0.53
1:D:13:DG:H21	3:B:57:ALA:HB2	1.74	0.53
3:B:255:ARG:HH11	3:B:259:GLU:CD	2.12	0.52
2:E:17:DA:H1'	2:E:18:DC:H5'	1.92	0.52
3:C:255:ARG:HD3	3:C:259:GLU:OE1	2.09	0.52
3:B:30:VAL:C	3:B:32:ALA:H	2.13	0.52
3:C:123:ILE:HG13	3:C:304:LEU:HD22	1.91	0.52
3:C:79:ILE:HD11	4:C:334:NPF:O4	2.10	0.52
1:D:12:DC:N4	2:E:12:DC:N4	2.58	0.52
3:A:123:ILE:HD13	3:A:300:SER:HB3	1.92	0.52
3:B:255:ARG:HD3	3:B:259:GLU:OE1	2.10	0.52
3:A:30:VAL:C	3:A:32:ALA:H	2.13	0.52

*Continued on next page...*

*Continued from previous page...*

Atom-1	Atom-2	Interatomic distance (Å)	Clash overlap (Å)
1:D:17:DA:C2	1:D:18:DA:C2	2.98	0.52
3:A:97:SER:HB2	3:A:114:LEU:HD13	1.92	0.52
3:B:325:LYS:HZ1	3:C:178:GLY:C	2.13	0.52
3:B:123:ILE:HG13	3:B:304:LEU:HD22	1.92	0.52
2:E:6:DG:OP1	3:B:30:VAL:CA	2.57	0.52
3:A:62:LEU:N	3:A:62:LEU:CD2	2.65	0.52
3:B:176:ALA:CB	3:C:177:LEU:HD13	2.40	0.52
1:D:13:DG:H2"	1:D:14:DG:OP2	2.10	0.51
3:A:71:LEU:HD21	3:A:80:VAL:HG21	1.91	0.51
3:C:282:TYR:O	3:C:284:PRO:C	2.48	0.51
3:A:123:ILE:HG13	3:A:304:LEU:HD22	1.92	0.51
3:C:71:LEU:HD21	3:C:80:VAL:HG21	1.91	0.51
1:D:14:DG:H2"	1:D:15:DA:H8	1.75	0.51
2:E:17:DA:C6	2:E:18:DC:C4	2.98	0.51
3:A:255:ARG:HD3	3:A:259:GLU:OE1	2.11	0.51
3:B:178:GLY:HA2	3:C:325:LYS:NZ	2.25	0.51
2:E:16:DC:H2"	2:E:17:DA:C8	2.46	0.51
3:B:123:ILE:HD13	3:B:300:SER:HB3	1.92	0.50
3:C:62:LEU:CD2	3:C:62:LEU:N	2.74	0.50
3:B:22:ARG:O	3:B:27:ALA:HB2	2.11	0.50
3:B:141:THR:O	3:B:142:ASN:HB3	2.12	0.50
3:A:30:VAL:O	3:A:32:ALA:N	2.41	0.50
3:A:78:GLN:O	3:A:81:ALA:HB3	2.12	0.50
3:A:329:THR:O	3:A:330:LEU:HD23	2.12	0.49
3:C:275:ASP:HA	3:C:288:THR:HG21	1.94	0.49
3:A:22:ARG:CA	3:A:27:ALA:HB2	2.42	0.49
3:C:73:LEU:HB2	3:C:76:PRO:HG2	1.93	0.49
3:A:168:ARG:HG3	3:A:204:TYR:CE2	2.48	0.49
3:A:31:SER:CB	3:A:34:THR:CB	2.91	0.49
3:B:247:ASP:O	3:B:250:ALA:HB3	2.12	0.49
3:C:123:ILE:HD13	3:C:300:SER:HB3	1.93	0.49
3:B:97:SER:HB2	3:B:114:LEU:HD13	1.93	0.49
3:C:250:ALA:O	3:C:254:MET:HG3	2.12	0.49
3:A:73:LEU:O	3:A:76:PRO:HD2	2.13	0.49
3:B:274:ASP:O	3:B:275:ASP:HB3	2.12	0.49
2:E:18:DC:H2"	2:E:19:DA:H8	1.77	0.49
3:B:282:TYR:O	3:B:284:PRO:C	2.51	0.49
3:B:30:VAL:O	3:B:32:ALA:N	2.43	0.49
2:E:18:DC:H2"	2:E:19:DA:C8	2.47	0.49
3:A:119:VAL:HG21	3:A:122:LEU:CD2	2.42	0.49
3:B:223:MET:O	3:B:226:PHE:HB3	2.12	0.49

*Continued on next page...*

*Continued from previous page...*

Atom-1	Atom-2	Interatomic distance (Å)	Clash overlap (Å)
3:B:73:LEU:HB2	3:B:76:PRO:HG2	1.94	0.49
3:C:97:SER:HB2	3:C:114:LEU:HD13	1.95	0.49
3:B:250:ALA:O	3:B:254:MET:HG3	2.13	0.48
3:A:73:LEU:HB2	3:A:76:PRO:HG2	1.93	0.48
3:A:152:ASP:N	3:A:152:ASP:OD2	2.47	0.48
3:B:325:LYS:NZ	3:C:178:GLY:C	2.67	0.48
3:B:152:ASP:OD2	3:B:152:ASP:N	2.47	0.48
3:C:167:THR:HG21	3:C:200:GLY:HA3	1.96	0.48
3:B:168:ARG:HG3	3:B:204:TYR:CE2	2.49	0.47
3:B:31:SER:CB	3:B:34:THR:CB	2.92	0.47
3:A:22:ARG:C	3:A:27:ALA:HB2	2.34	0.47
3:A:141:THR:O	3:A:142:ASN:HB3	2.14	0.47
3:A:147:PHE:CG	3:A:156:ILE:HD12	2.49	0.47
3:C:141:THR:O	3:C:142:ASN:HB3	2.14	0.47
1:D:15:DA:C2	1:D:16:DT:C2	3.02	0.47
3:B:73:LEU:O	3:B:76:PRO:HD2	2.15	0.47
3:C:274:ASP:O	3:C:275:ASP:HB3	2.14	0.47
3:B:119:VAL:HG21	3:B:122:LEU:CD2	2.45	0.47
3:C:199:ALA:O	3:C:200:GLY:C	2.54	0.47
3:C:223:MET:O	3:C:226:PHE:HB3	2.15	0.47
3:A:247:ASP:O	3:A:250:ALA:HB3	2.14	0.46
3:C:152:ASP:N	3:C:152:ASP:OD2	2.47	0.46
3:A:174:LEU:HD22	3:A:241:ALA:HB1	1.97	0.46
2:E:18:DC:H2"	2:E:19:DA:OP2	2.15	0.46
3:A:63:LEU:CD1	3:A:119:VAL:HG12	2.43	0.46
3:B:82:ALA:HA	3:B:294:ARG:NH2	2.30	0.46
3:C:119:VAL:HG21	3:C:122:LEU:CD2	2.46	0.46
3:A:125:ASN:HD22	3:A:125:ASN:C	2.20	0.46
3:A:245:ALA:HB3	3:A:249:MET:CE	2.46	0.45
1:D:14:DG:H2"	1:D:15:DA:C8	2.50	0.45
3:C:174:LEU:HD22	3:C:241:ALA:HB1	1.98	0.45
3:C:78:GLN:O	3:C:81:ALA:HB3	2.16	0.45
2:E:8:DT:H71	3:B:18:GLN:CB	2.45	0.45
3:A:119:VAL:HG21	3:A:122:LEU:HD21	1.98	0.45
3:A:283:ILE:HA	3:A:284:PRO:HA	1.84	0.45
3:C:147:PHE:CG	3:C:156:ILE:HD12	2.52	0.45
3:C:247:ASP:O	3:C:250:ALA:HB3	2.16	0.45
3:B:177:LEU:HD12	3:B:177:LEU:HA	1.78	0.45
3:B:174:LEU:HD11	3:B:243:LEU:CD2	2.47	0.45
3:B:164:GLU:OE1	3:B:203:LYS:NZ	2.33	0.45
3:A:66:VAL:N	3:A:114:LEU:HD21	2.32	0.45

*Continued on next page...*

*Continued from previous page...*

Atom-1	Atom-2	Interatomic distance (Å)	Clash overlap (Å)
3:A:97:SER:HB2	3:A:114:LEU:CD1	2.47	0.44
3:C:283:ILE:HA	3:C:284:PRO:HA	1.85	0.44
3:B:125:ASN:C	3:B:125:ASN:HD22	2.19	0.44
3:B:178:GLY:HA2	3:C:325:LYS:HZ1	1.82	0.44
3:C:125:ASN:C	3:C:125:ASN:HD22	2.20	0.44
3:C:73:LEU:O	3:C:76:PRO:HD2	2.16	0.44
1:D:18:DA:H2''	1:D:19:DC:C6	2.52	0.44
3:A:86:ARG:HE	3:A:298:GLN:HG2	1.82	0.44
3:B:119:VAL:HG21	3:B:122:LEU:HD21	1.99	0.44
3:B:66:VAL:N	3:B:114:LEU:HD21	2.33	0.44
3:C:119:VAL:HG21	3:C:122:LEU:HD21	1.99	0.44
3:A:167:THR:HG21	3:A:200:GLY:HA3	1.99	0.44
3:B:147:PHE:CG	3:B:156:ILE:HD12	2.52	0.44
3:A:219:ASP:O	3:A:220:TRP:CB	2.65	0.44
3:A:238:VAL:HA	3:A:239:PRO:HD2	1.87	0.44
3:B:283:ILE:HA	3:B:284:PRO:HA	1.86	0.44
1:D:16:DT:C4	1:D:17:DA:C6	3.05	0.43
3:A:245:ALA:HB3	3:A:249:MET:HE1	2.01	0.43
3:B:174:LEU:HD22	3:B:241:ALA:HB1	2.00	0.43
3:B:199:ALA:O	3:B:200:GLY:C	2.55	0.43
3:C:66:VAL:N	3:C:114:LEU:HD21	2.32	0.43
3:B:205:LEU:HD23	3:B:205:LEU:HA	1.88	0.43
3:A:126:TYR:HD1	3:A:128:LEU:HD13	1.83	0.43
1:D:10:DA:H2''	1:D:11:DG:OP2	2.18	0.43
3:A:288:THR:OG1	3:A:289:ILE:N	2.51	0.43
3:B:97:SER:HB2	3:B:114:LEU:CD1	2.49	0.43
3:A:126:TYR:CG	3:A:127:PRO:HD2	2.54	0.43
3:A:171:VAL:HG13	3:A:205:LEU:HD23	2.00	0.43
3:A:205:LEU:HA	3:A:205:LEU:HD23	1.86	0.43
3:A:274:ASP:O	3:A:275:ASP:HB3	2.19	0.43
3:C:115:LEU:HA	3:C:115:LEU:HD12	1.87	0.42
3:C:177:LEU:HD12	3:C:177:LEU:HA	1.79	0.42
3:A:223:MET:O	3:A:226:PHE:HB3	2.20	0.42
3:A:99:VAL:HG22	3:A:110:ALA:HB2	2.01	0.42
3:A:148:LEU:HD22	3:A:296:LEU:HD11	2.01	0.42
3:B:285:PRO:HB3	3:B:326:ARG:HG2	2.01	0.42
3:C:174:LEU:HD11	3:C:243:LEU:CD2	2.49	0.42
3:B:78:GLN:O	3:B:81:ALA:HB3	2.19	0.42
3:C:285:PRO:HB3	3:C:326:ARG:HG2	2.02	0.42
1:D:17:DA:C6	1:D:18:DA:C6	3.08	0.42
1:D:7:DG:H2''	1:D:8:DT:C5'	2.46	0.42

*Continued on next page...*

Continued from previous page...

Atom-1	Atom-2	Interatomic distance (Å)	Clash overlap (Å)
2:E:13:DG:H1'	2:E:14:DC:C5'	2.32	0.42
3:A:177:LEU:HD12	3:A:177:LEU:HA	1.79	0.42
3:B:270:VAL:HG12	3:B:271:VAL:N	2.35	0.42
3:A:153:GLN:HE21	3:A:153:GLN:HB2	1.59	0.42
3:A:285:PRO:CB	3:A:326:ARG:HG2	2.50	0.42
3:C:169:LEU:HA	3:C:169:LEU:HD12	1.87	0.41
3:C:164:GLU:OE1	3:C:203:LYS:NZ	2.35	0.41
3:B:288:THR:OG1	3:B:289:ILE:N	2.54	0.41
3:B:285:PRO:CB	3:B:326:ARG:HG2	2.50	0.41
3:C:86:ARG:HE	3:C:298:GLN:HG2	1.85	0.41
3:C:63:LEU:HD23	3:C:93:SER:HB3	2.01	0.41
3:C:285:PRO:CB	3:C:326:ARG:HG2	2.50	0.41
3:A:22:ARG:O	3:A:27:ALA:HB2	2.21	0.41
3:B:219:ASP:O	3:B:220:TRP:CB	2.66	0.41
3:B:126:TYR:CG	3:B:127:PRO:HD2	2.56	0.41
3:C:126:TYR:HD1	3:C:128:LEU:HD13	1.86	0.41
3:C:263:ARG:HG3	3:C:263:ARG:HH11	1.86	0.41
3:A:73:LEU:C	3:A:76:PRO:HD2	2.41	0.41
3:B:84:LYS:O	3:B:85:SER:C	2.59	0.41
3:C:126:TYR:CG	3:C:127:PRO:HD2	2.56	0.41
3:C:97:SER:HB2	3:C:114:LEU:CD1	2.51	0.41
3:B:177:LEU:HD13	3:C:177:LEU:CD1	2.51	0.41
1:D:13:DG:C2'	1:D:14:DG:H5''	2.50	0.41
3:A:199:ALA:O	3:A:200:GLY:C	2.59	0.40
3:A:63:LEU:HD23	3:A:93:SER:HB3	2.03	0.40
3:B:141:THR:O	3:B:142:ASN:CB	2.69	0.40
3:A:270:VAL:HG12	3:A:271:VAL:N	2.35	0.40
3:B:174:LEU:HD11	3:B:243:LEU:HD21	2.03	0.40

There are no symmetry-related clashes.

## 5.3 Torsion angles [\(i\)](#)

### 5.3.1 Protein backbone [\(i\)](#)

In the following table, the Percentiles column shows the percent Ramachandran outliers of the chain as a percentile score with respect to all X-ray entries followed by that with respect to entries of similar resolution.

The Analysed column shows the number of residues for which the backbone conformation was analysed, and the total number of residues.



Mol	Chain	Analysed	Favoured	Allowed	Outliers	Percentiles	
3	A	327/333 (98%)	280 (86%)	38 (12%)	9 (3%)	5	33
3	B	327/333 (98%)	283 (86%)	36 (11%)	8 (2%)	6	36
3	C	267/333 (80%)	240 (90%)	24 (9%)	3 (1%)	14	51
All	All	921/999 (92%)	803 (87%)	98 (11%)	20 (2%)	6	37

All (20) Ramachandran outliers are listed below:

Mol	Chain	Res	Type
3	A	3	PRO
3	A	27	ALA
3	A	46	ASN
3	A	62	LEU
3	A	274	ASP
3	B	3	PRO
3	B	27	ALA
3	B	46	ASN
3	B	274	ASP
3	C	274	ASP
3	A	31	SER
3	A	141	THR
3	B	31	SER
3	B	141	THR
3	C	141	THR
3	B	32	ALA
3	A	32	ALA
3	A	74	HIS
3	B	74	HIS
3	C	74	HIS

### 5.3.2 Protein sidechains [i](#)

In the following table, the Percentiles column shows the percent sidechain outliers of the chain as a percentile score with respect to all X-ray entries followed by that with respect to entries of similar resolution.

The Analysed column shows the number of residues for which the sidechain conformation was analysed, and the total number of residues.

Mol	Chain	Analysed	Rotameric	Outliers	Percentiles	
3	A	221/273 (81%)	207 (94%)	14 (6%)	18	46
3	B	221/273 (81%)	208 (94%)	13 (6%)	19	48

*Continued on next page...*

*Continued from previous page...*

Mol	Chain	Analysed	Rotameric	Outliers	Percentiles	
3	C	221/273 (81%)	207 (94%)	14 (6%)	18	46
All	All	663/819 (81%)	622 (94%)	41 (6%)	18	46

All (41) residues with a non-rotameric sidechain are listed below:

Mol	Chain	Res	Type
3	A	62	LEU
3	A	63	LEU
3	A	96	VAL
3	A	114	LEU
3	A	115	LEU
3	A	125	ASN
3	A	128	LEU
3	A	169	LEU
3	A	177	LEU
3	A	189	LEU
3	A	198	LEU
3	A	255	ARG
3	A	294	ARG
3	A	326	ARG
3	B	63	LEU
3	B	96	VAL
3	B	114	LEU
3	B	115	LEU
3	B	125	ASN
3	B	128	LEU
3	B	169	LEU
3	B	177	LEU
3	B	189	LEU
3	B	198	LEU
3	B	255	ARG
3	B	303	ARG
3	B	326	ARG
3	C	62	LEU
3	C	63	LEU
3	C	96	VAL
3	C	114	LEU
3	C	115	LEU
3	C	125	ASN
3	C	128	LEU
3	C	169	LEU
3	C	177	LEU

*Continued on next page...*

*Continued from previous page...*

Mol	Chain	Res	Type
3	C	189	LEU
3	C	198	LEU
3	C	255	ARG
3	C	294	ARG
3	C	326	ARG

Some sidechains can be flipped to improve hydrogen bonding and reduce clashes. All (21) such sidechains are listed below:

Mol	Chain	Res	Type
3	A	89	GLN
3	A	125	ASN
3	A	153	GLN
3	A	227	GLN
3	A	231	GLN
3	A	298	GLN
3	A	306	GLN
3	B	89	GLN
3	B	125	ASN
3	B	153	GLN
3	B	227	GLN
3	B	231	GLN
3	B	298	GLN
3	B	306	GLN
3	C	89	GLN
3	C	125	ASN
3	C	153	GLN
3	C	227	GLN
3	C	231	GLN
3	C	298	GLN
3	C	306	GLN

### 5.3.3 RNA [i](#)

There are no RNA molecules in this entry.

## 5.4 Non-standard residues in protein, DNA, RNA chains [i](#)

There are no non-standard protein/DNA/RNA residues in this entry.

## 5.5 Carbohydrates [i](#)

There are no monosaccharides in this entry.

## 5.6 Ligand geometry [i](#)

3 ligands are modelled in this entry.

In the following table, the Counts columns list the number of bonds (or angles) for which Mogul statistics could be retrieved, the number of bonds (or angles) that are observed in the model and the number of bonds (or angles) that are defined in the Chemical Component Dictionary. The Link column lists molecule types, if any, to which the group is linked. The Z score for a bond length (or angle) is the number of standard deviations the observed value is removed from the expected value. A bond length (or angle) with  $|Z| > 2$  is considered an outlier worth inspection. RMSZ is the root-mean-square of all Z scores of the bond lengths (or angles).

Mol	Type	Chain	Res	Link	Bond lengths			Bond angles		
					Counts	RMSZ	# Z  > 2	Counts	RMSZ	# Z  > 2
4	NPF	B	334	-	20,21,21	1.96	4 (20%)	27,30,30	2.78	9 (33%)
4	NPF	C	334	-	20,21,21	1.94	4 (20%)	27,30,30	2.78	11 (40%)
4	NPF	A	334	-	20,21,21	1.87	5 (25%)	27,30,30	1.96	9 (33%)

In the following table, the Chirals column lists the number of chiral outliers, the number of chiral centers analysed, the number of these observed in the model and the number defined in the Chemical Component Dictionary. Similar counts are reported in the Torsion and Rings columns. '-' means no outliers of that kind were identified.

Mol	Type	Chain	Res	Link	Chirals	Torsions	Rings
4	NPF	B	334	-	-	3/6/28/28	0/2/2/2
4	NPF	C	334	-	-	3/6/28/28	0/2/2/2
4	NPF	A	334	-	-	4/6/28/28	0/2/2/2

All (13) bond length outliers are listed below:

Mol	Chain	Res	Type	Atoms	Z	Observed(Å)	Ideal(Å)
4	A	334	NPF	O1-C1A	5.70	1.47	1.37
4	B	334	NPF	O1-C1A	5.09	1.46	1.37
4	C	334	NPF	O1-C1A	4.69	1.45	1.37
4	B	334	NPF	O1-C1	4.48	1.48	1.41
4	C	334	NPF	C6A-N6	-4.44	1.37	1.45
4	B	334	NPF	C6A-N6	-4.13	1.38	1.45
4	C	334	NPF	O1-C1	3.96	1.47	1.41
4	A	334	NPF	O1-C1	2.87	1.45	1.41

*Continued on next page...*

Continued from previous page...

Mol	Chain	Res	Type	Atoms	Z	Observed(Å)	Ideal(Å)
4	B	334	NPF	O5-C1	2.70	1.48	1.41
4	C	334	NPF	O5-C1	2.68	1.48	1.41
4	A	334	NPF	C6A-N6	-2.25	1.41	1.45
4	A	334	NPF	C5A-C6A	2.24	1.43	1.39
4	A	334	NPF	C2A-C1A	2.06	1.43	1.39

All (29) bond angle outliers are listed below:

Mol	Chain	Res	Type	Atoms	Z	Observed(°)	Ideal(°)
4	B	334	NPF	C1A-O1-C1	8.49	134.30	118.09
4	B	334	NPF	C1-O5-C5	8.46	128.21	113.67
4	C	334	NPF	C1A-O1-C1	7.65	132.71	118.09
4	C	334	NPF	C1-O5-C5	7.28	126.19	113.67
4	C	334	NPF	O1-C1A-C6A	-5.64	110.51	117.31
4	A	334	NPF	C1-C2-C3	4.11	118.56	110.00
4	A	334	NPF	C1-O5-C5	3.95	120.47	113.67
4	A	334	NPF	C1A-O1-C1	3.74	125.24	118.09
4	C	334	NPF	C6-C5-C4	-3.33	106.92	113.07
4	B	334	NPF	C6-C5-C4	-3.24	107.09	113.07
4	A	334	NPF	O4-C4-C5	3.12	116.58	109.67
4	A	334	NPF	O4-C4-C3	-2.72	104.05	110.35
4	C	334	NPF	C3A-C2A-C1A	2.69	124.66	119.71
4	C	334	NPF	O1-C1-C2	2.69	111.04	107.14
4	A	334	NPF	O5-C1-C2	2.67	116.01	110.35
4	C	334	NPF	O3-C3-C2	-2.46	104.65	110.35
4	B	334	NPF	C3A-C2A-C1A	2.44	124.20	119.71
4	B	334	NPF	O4-C4-C5	-2.39	104.37	109.67
4	B	334	NPF	O5-C1-O1	2.35	114.27	108.29
4	A	334	NPF	C3A-C2A-C1A	2.23	123.82	119.71
4	B	334	NPF	C5A-C6A-N6	-2.19	114.13	116.47
4	B	334	NPF	C2A-C1A-C6A	-2.15	113.53	118.81
4	C	334	NPF	O5-C5-C4	2.14	113.36	109.52
4	A	334	NPF	C4-C3-C2	-2.12	107.13	110.82
4	C	334	NPF	O2-C2-C1	2.08	115.10	110.05
4	C	334	NPF	C2A-C1A-C6A	-2.03	113.82	118.81
4	B	334	NPF	C5A-C6A-C1A	2.02	124.02	120.01
4	C	334	NPF	O4-C4-C5	-2.01	105.21	109.67
4	A	334	NPF	O5-C5-C4	2.00	113.11	109.52

There are no chirality outliers.

All (10) torsion outliers are listed below:

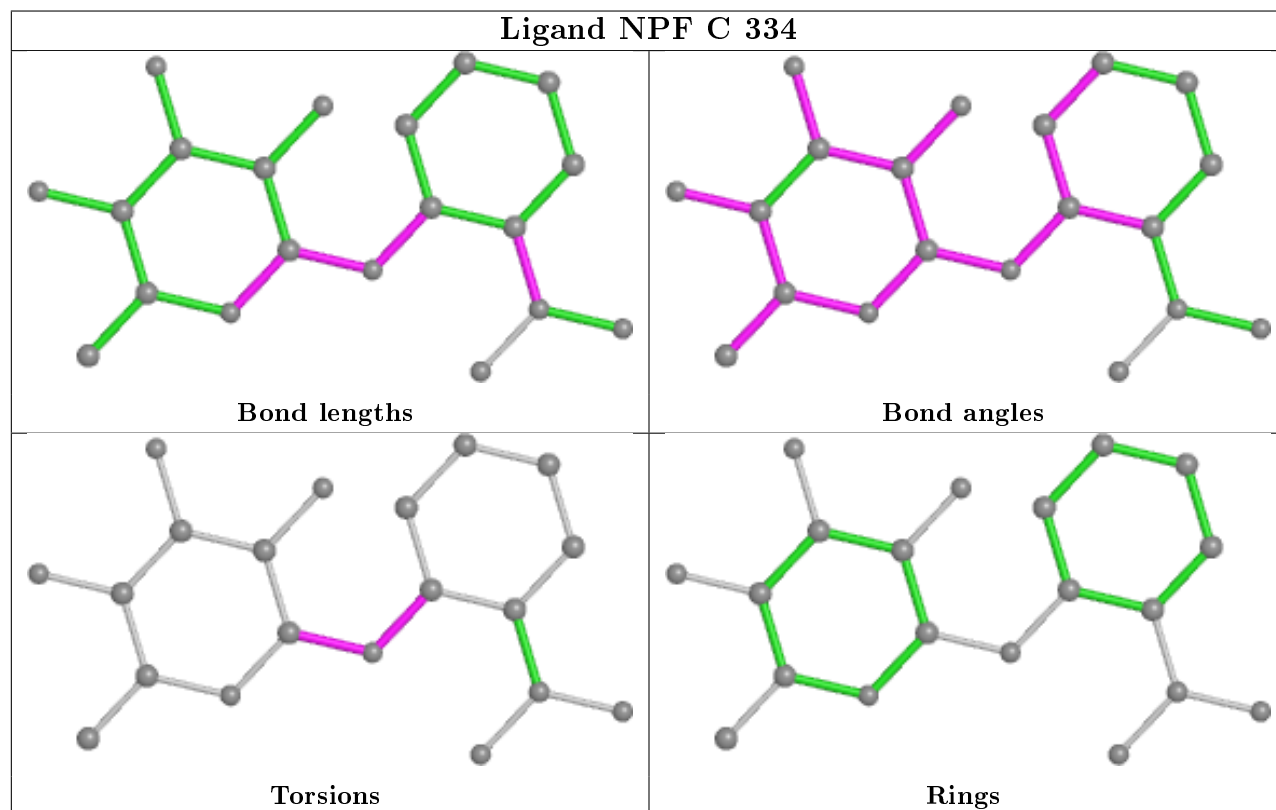
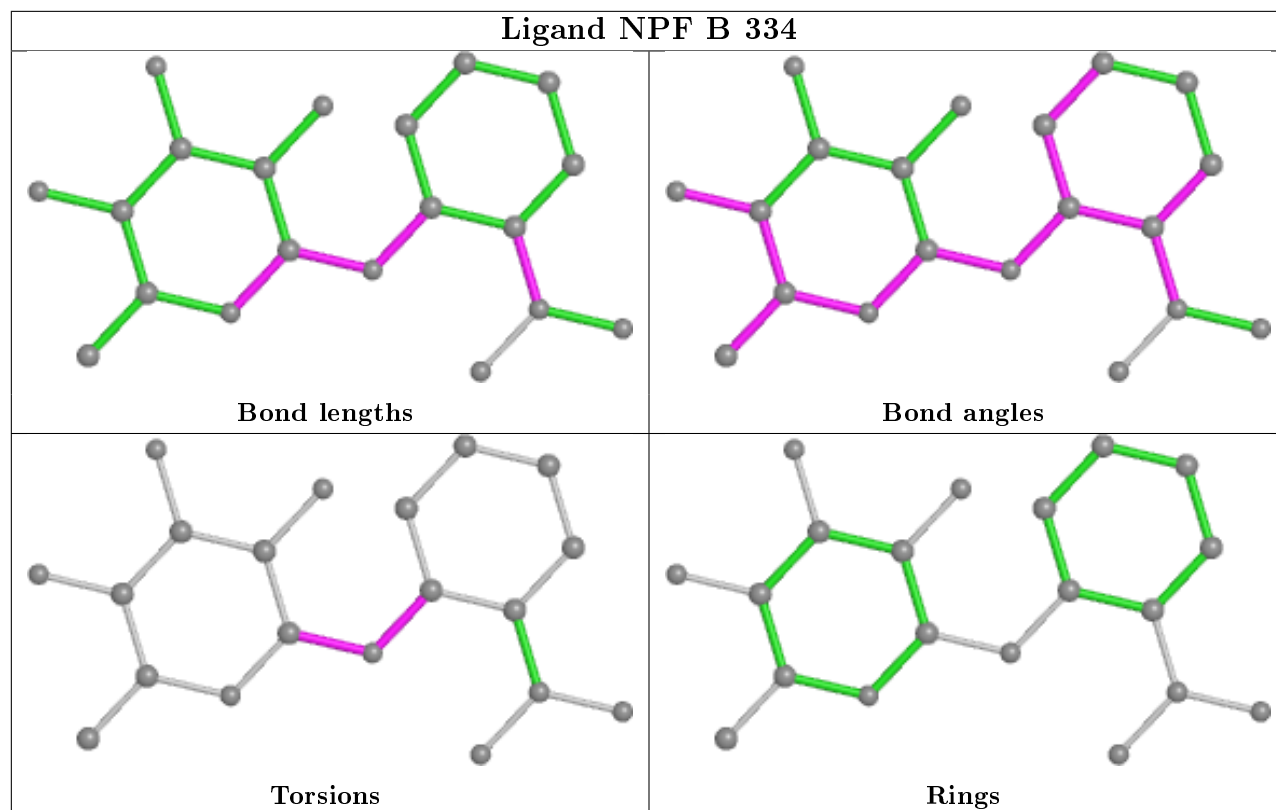
Mol	Chain	Res	Type	Atoms
4	B	334	NPF	C2-C1-O1-C1A
4	B	334	NPF	O5-C1-O1-C1A
4	C	334	NPF	C2-C1-O1-C1A
4	C	334	NPF	O5-C1-O1-C1A
4	A	334	NPF	C2-C1-O1-C1A
4	A	334	NPF	O5-C1-O1-C1A
4	C	334	NPF	C2A-C1A-O1-C1
4	A	334	NPF	C2A-C1A-O1-C1
4	B	334	NPF	C2A-C1A-O1-C1
4	A	334	NPF	C6A-C1A-O1-C1

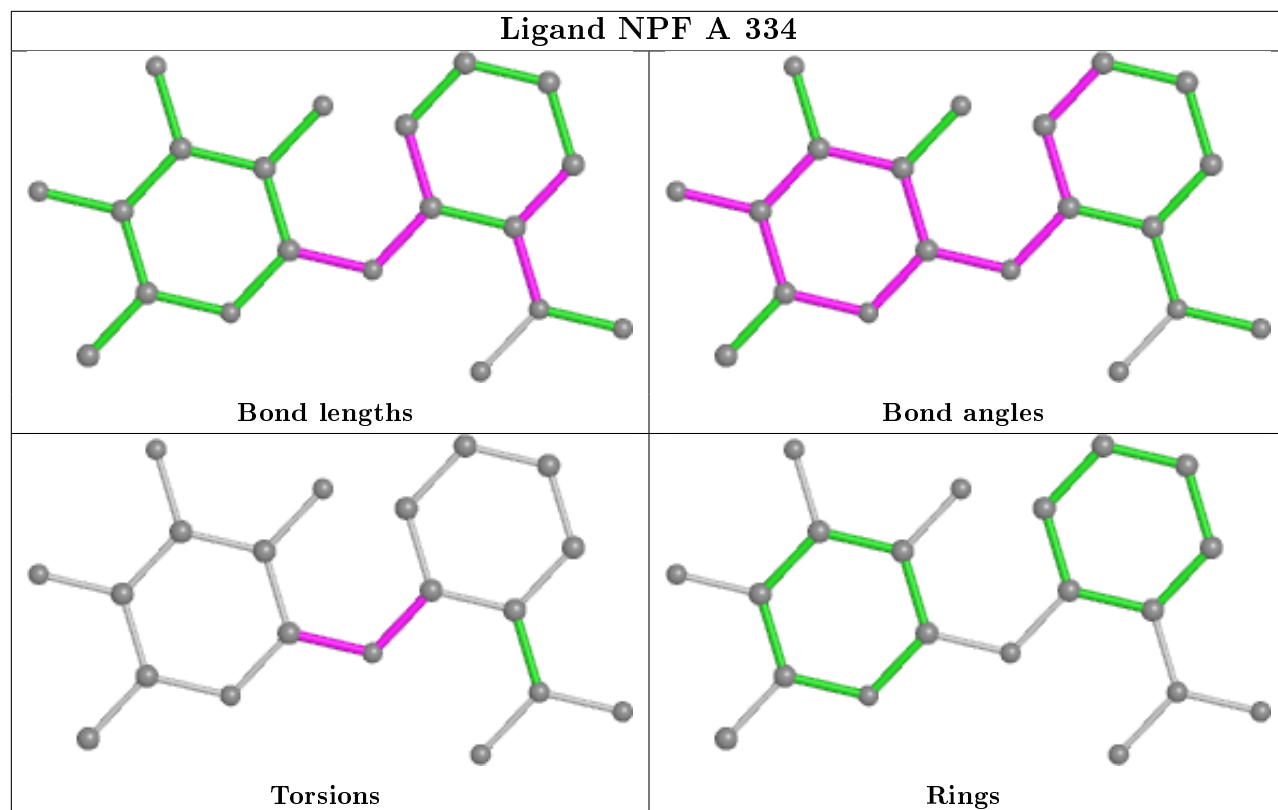
There are no ring outliers.

2 monomers are involved in 3 short contacts:

Mol	Chain	Res	Type	Clashes	Symm-Clashes
4	B	334	NPF	1	0
4	C	334	NPF	2	0

The following is a two-dimensional graphical depiction of Mogul quality analysis of bond lengths, bond angles, torsion angles, and ring geometry for all instances of the Ligand of Interest. In addition, ligands with molecular weight > 250 and outliers as shown on the validation Tables will also be included. For torsion angles, if less than 5% of the Mogul distribution of torsion angles is within 10 degrees of the torsion angle in question, then that torsion angle is considered an outlier. Any bond that is central to one or more torsion angles identified as an outlier by Mogul will be highlighted in the graph. For rings, the root-mean-square deviation (RMSD) between the ring in question and similar rings identified by Mogul is calculated over all ring torsion angles. If the average RMSD is greater than 60 degrees and the minimal RMSD between the ring in question and any Mogul-identified rings is also greater than 60 degrees, then that ring is considered an outlier. The outliers are highlighted in purple. The color gray indicates Mogul did not find sufficient equivalents in the CSD to analyse the geometry.





## 5.7 Other polymers [i](#)

There are no such residues in this entry.

## 5.8 Polymer linkage issues [i](#)

There are no chain breaks in this entry.



## 6 Fit of model and data

### 6.1 Protein, DNA and RNA chains

EDS was not executed - this section is therefore empty.

### 6.2 Non-standard residues in protein, DNA, RNA chains

EDS was not executed - this section is therefore empty.

### 6.3 Carbohydrates

EDS was not executed - this section is therefore empty.

### 6.4 Ligands

EDS was not executed - this section is therefore empty.

### 6.5 Other polymers

EDS was not executed - this section is therefore empty.