



Full wwPDB X-ray Structure Validation Report ⓘ

Mar 9, 2018 – 12:10 am GMT

PDB ID : 4JY4
Title : Crystal structure of human Fab PGT121, a broadly reactive and potent HIV-1 neutralizing antibody
Authors : Julien, J.-P.; Diwanji, D.C.; Burton, D.R.; Wilson, I.A.
Deposited on : 2013-03-29
Resolution : 2.80 Å(reported)

This is a Full wwPDB X-ray Structure Validation Report for a publicly released PDB entry.

We welcome your comments at validation@mail.wwpdb.org

A user guide is available at

<https://www.wwpdb.org/validation/2017/XrayValidationReportHelp>

with specific help available everywhere you see the ⓘ symbol.

The following versions of software and data (see [references ⓘ](#)) were used in the production of this report:

MolProbity : 4.02b-467
Mogul : 1.7.3 (157068), CSD as539be (2018)
Xtriage (Phenix) : 1.13
EDS : trunk30967
Percentile statistics : 20171227.v01 (using entries in the PDB archive December 27th 2017)
Refmac : 5.8.0158
CCP4 : 7.0 (Gargrove)
Ideal geometry (proteins) : Engh & Huber (2001)
Ideal geometry (DNA, RNA) : Parkinson et al. (1996)
Validation Pipeline (wwPDB-VP) : trunk30967

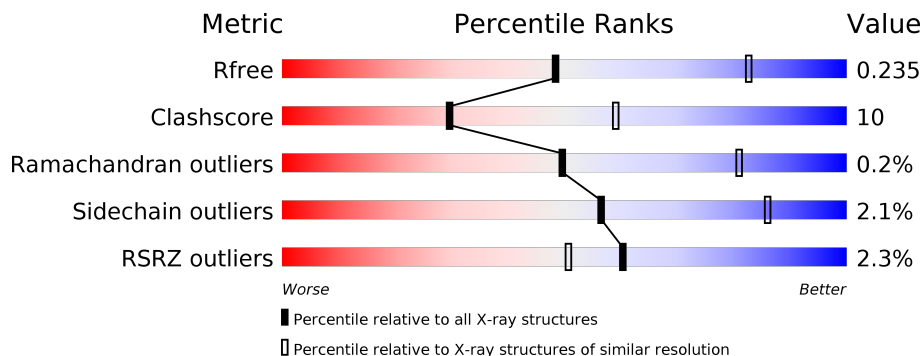
1 Overall quality at a glance

The following experimental techniques were used to determine the structure:

X-RAY DIFFRACTION

The reported resolution of this entry is 2.80 Å.

Percentile scores (ranging between 0-100) for global validation metrics of the entry are shown in the following graphic. The table shows the number of entries on which the scores are based.



Metric	Whole archive (#Entries)	Similar resolution (#Entries, resolution range(Å))
R_{free}	111664	2792 (2.80-2.80)
Clashscore	122126	3209 (2.80-2.80)
Ramachandran outliers	120053	3158 (2.80-2.80)
Sidechain outliers	120020	3160 (2.80-2.80)
RSRZ outliers	108989	2726 (2.80-2.80)

The table below summarises the geometric issues observed across the polymeric chains and their fit to the electron density. The red, orange, yellow and green segments on the lower bar indicate the fraction of residues that contain outliers for ≥ 3 , 2, 1 and 0 types of geometric quality criteria. A grey segment represents the fraction of residues that are not modelled. The numeric value for each fraction is indicated below the corresponding segment, with a dot representing fractions $\leq 5\%$. The upper red bar (where present) indicates the fraction of residues that have poor fit to the electron density. The numeric value is given above the bar.

Mol	Chain	Length	Quality of chain
1	B	235	
2	A	211	

2 Entry composition [i](#)

There are 10 unique types of molecules in this entry. The entry contains 3466 atoms, of which 0 are hydrogens and 0 are deuteriums.

In the tables below, the ZeroOcc column contains the number of atoms modelled with zero occupancy, the AltConf column contains the number of residues with at least one atom in alternate conformation and the Trace column contains the number of residues modelled with at most 2 atoms.

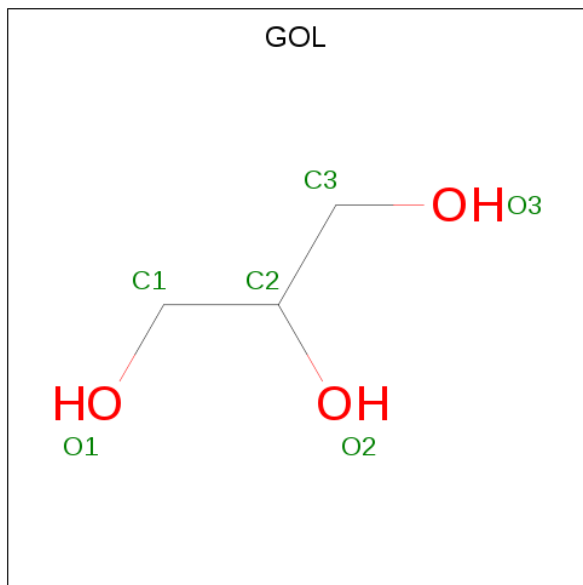
- Molecule 1 is a protein called PGT121 heavy chain.

Mol	Chain	Residues	Atoms					ZeroOcc	AltConf	Trace
			Total	C	N	O	S			
1	B	232	1749	1105	295	343	6	0	0	0

- Molecule 2 is a protein called PGT121 light chain.

Mol	Chain	Residues	Atoms					ZeroOcc	AltConf	Trace
			Total	C	N	O	S			
2	A	208	1570	985	264	317	4	0	0	0

- Molecule 3 is GLYCEROL (three-letter code: GOL) (formula: $C_3H_8O_3$).



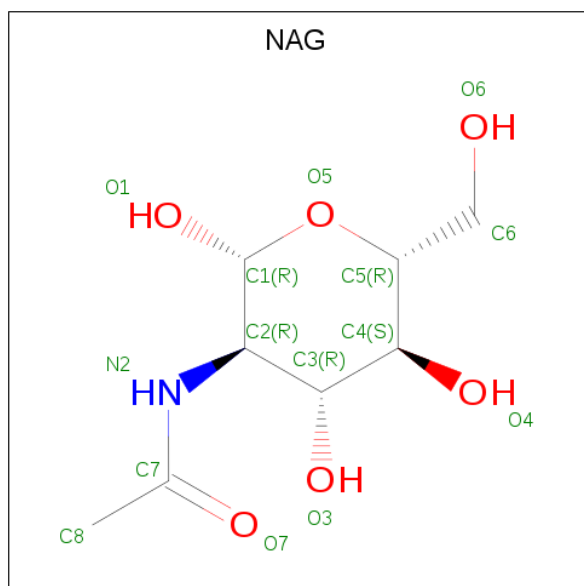
Mol	Chain	Residues	Atoms			ZeroOcc	AltConf
			Total	C	O		
3	B	1	6	3	3	0	0
3	A	1	6	3	3	0	0

Continued on next page...

Continued from previous page...

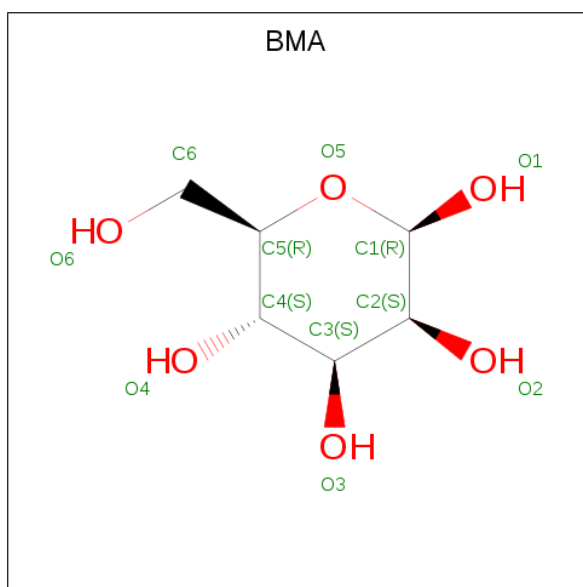
Mol	Chain	Residues	Atoms			ZeroOcc	AltConf
3	A	1	Total	C	O	0	0
			6	3	3		

- Molecule 4 is N-ACETYL-D-GLUCOSAMINE (three-letter code: NAG) (formula: C₈H₁₅NO₆).



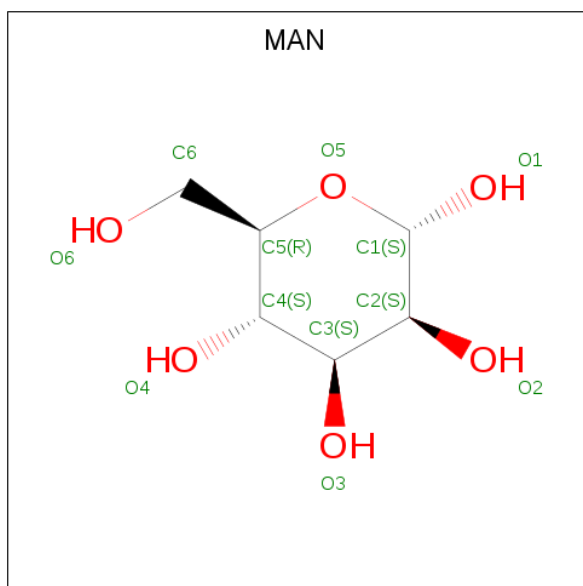
Mol	Chain	Residues	Atoms				ZeroOcc	AltConf
4	B	1	Total	C	N	O	0	0
			14	8	1	5		
4	B	1	Total	C	N	O	0	0
			14	8	1	5		
4	B	1	Total	C	N	O	0	0
			14	8	1	5		

- Molecule 5 is BETA-D-MANNOSE (three-letter code: BMA) (formula: C₆H₁₂O₆).



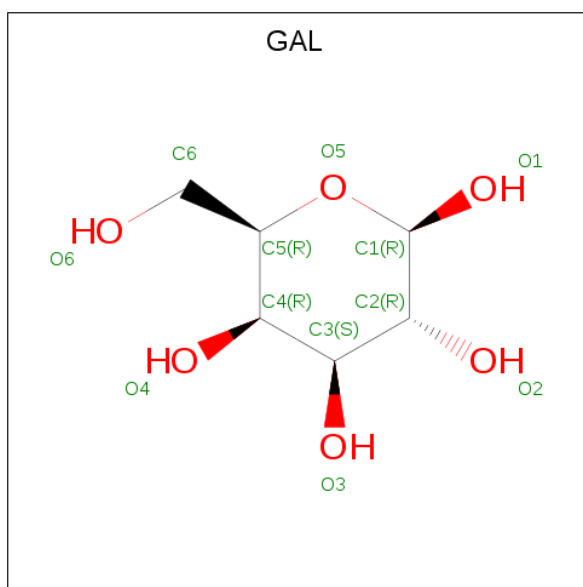
Mol	Chain	Residues	Atoms			ZeroOcc	AltConf
5	B	1	Total	C	O	0	0
			11	6	5		

- Molecule 6 is ALPHA-D-MANNOSE (three-letter code: MAN) (formula: C₆H₁₂O₆).



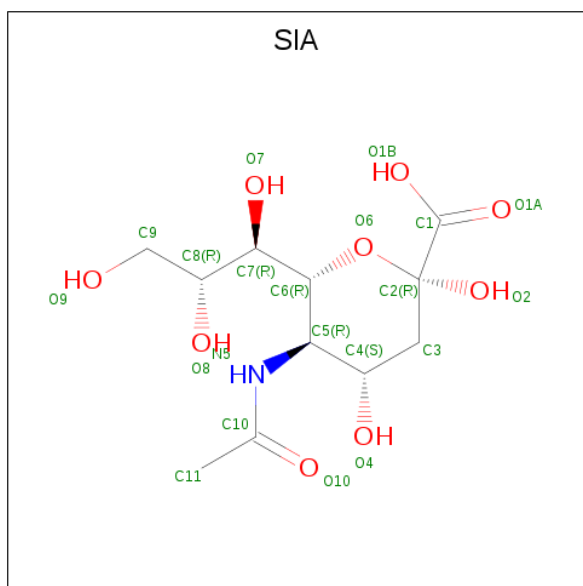
Mol	Chain	Residues	Atoms			ZeroOcc	AltConf
6	B	1	Total	C	O	0	0
			11	6	5		
6	B	1	Total	C	O	0	0
			11	6	5		

- Molecule 7 is BETA-D-GALACTOSE (three-letter code: GAL) (formula: C₆H₁₂O₆).



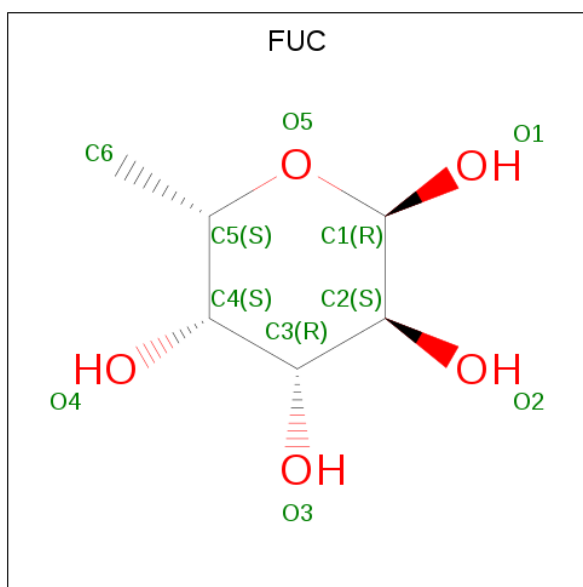
Mol	Chain	Residues	Atoms			ZeroOcc	AltConf
7	B	1	Total	C	O	0	0
			11	6	5		

- Molecule 8 is O-SIALIC ACID (three-letter code: SIA) (formula: $C_{11}H_{19}NO_9$).



Mol	Chain	Residues	Atoms				ZeroOcc	AltConf
8	B	1	Total	C	N	O	0	0
			20	11	1	8		

- Molecule 9 is ALPHA-L-FUCOSE (three-letter code: FUC) (formula: $C_6H_{12}O_5$).



Mol	Chain	Residues	Atoms	ZeroOcc	AltConf
9	B	1	Total C O 10 6 4	0	0

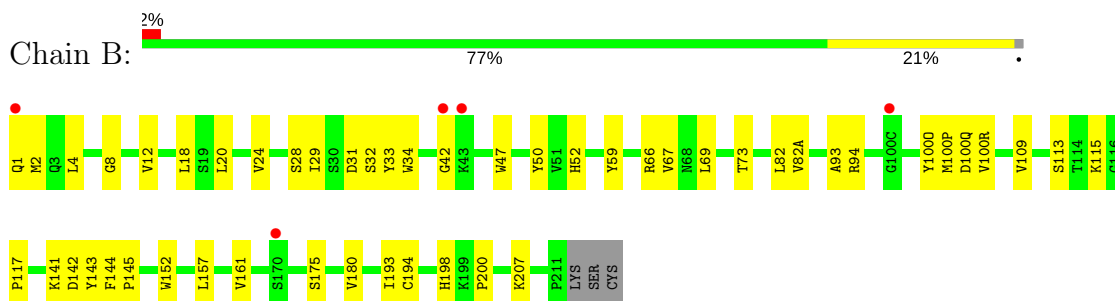
- Molecule 10 is water.

Mol	Chain	Residues	Atoms	ZeroOcc	AltConf
10	B	6	Total O 6 6	0	0
10	A	7	Total O 7 7	0	0

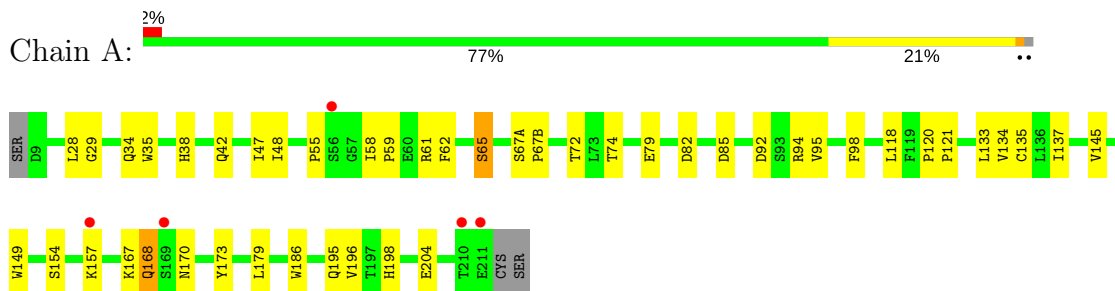
3 Residue-property plots [i](#)

These plots are drawn for all protein, RNA and DNA chains in the entry. The first graphic for a chain summarises the proportions of the various outlier classes displayed in the second graphic. The second graphic shows the sequence view annotated by issues in geometry and electron density. Residues are color-coded according to the number of geometric quality criteria for which they contain at least one outlier: green = 0, yellow = 1, orange = 2 and red = 3 or more. A red dot above a residue indicates a poor fit to the electron density ($RSRZ > 2$). Stretches of 2 or more consecutive residues without any outlier are shown as a green connector. Residues present in the sample, but not in the model, are shown in grey.

- Molecule 1: PGT121 heavy chain



- Molecule 2: PGT121 light chain



4 Data and refinement statistics

Property	Value	Source
Space group	P 21 21 21	Depositor
Cell constants a, b, c, α , β , γ	64.97Å 65.72Å 159.21Å 90.00° 90.00° 90.00°	Depositor
Resolution (Å)	19.91 – 2.80 19.91 – 2.80	Depositor EDS
% Data completeness (in resolution range)	99.9 (19.91-2.80) 99.7 (19.91-2.80)	Depositor EDS
R_{merge}	(Not available)	Depositor
R_{sym}	0.09	Depositor
$\langle I/\sigma(I) \rangle$ ¹	3.34 (at 2.79Å)	Xtrriage
Refinement program	PHENIX (phenix.refine: 1.7.2_869)	Depositor
R, R_{free}	0.189 , 0.234 0.189 , 0.235	Depositor DCC
R_{free} test set	870 reflections (5.01%)	wwPDB-VP
Wilson B-factor (Å ²)	50.0	Xtrriage
Anisotropy	0.365	Xtrriage
Bulk solvent k_{sol} (e/Å ³), B_{sol} (Å ²)	0.35 , 31.1	EDS
L-test for twinning ²	$\langle L \rangle = 0.47$, $\langle L^2 \rangle = 0.30$	Xtrriage
Estimated twinning fraction	0.028 for k,h,-l	Xtrriage
F_o, F_c correlation	0.94	EDS
Total number of atoms	3466	wwPDB-VP
Average B, all atoms (Å ²)	52.0	wwPDB-VP

Xtrriage's analysis on translational NCS is as follows: *The largest off-origin peak in the Patterson function is 6.58% of the height of the origin peak. No significant pseudotranslation is detected.*

¹Intensities estimated from amplitudes.

²Theoretical values of $\langle |L| \rangle$, $\langle L^2 \rangle$ for acentric reflections are 0.5, 0.333 respectively for untwinned datasets, and 0.375, 0.2 for perfectly twinned datasets.

5 Model quality

5.1 Standard geometry

Bond lengths and bond angles in the following residue types are not validated in this section: GOL, BMA, NAG, SIA, GAL, FUC, MAN

The Z score for a bond length (or angle) is the number of standard deviations the observed value is removed from the expected value. A bond length (or angle) with $|Z| > 5$ is considered an outlier worth inspection. RMSZ is the root-mean-square of all Z scores of the bond lengths (or angles).

Mol	Chain	Bond lengths		Bond angles	
		RMSZ	# Z >5	RMSZ	# Z >5
1	B	0.52	0/1794	0.66	0/2447
2	A	0.51	0/1612	0.66	0/2205
All	All	0.52	0/3406	0.66	0/4652

There are no bond length outliers.

There are no bond angle outliers.

There are no chirality outliers.

There are no planarity outliers.

5.2 Too-close contacts

In the following table, the Non-H and H(model) columns list the number of non-hydrogen atoms and hydrogen atoms in the chain respectively. The H(added) column lists the number of hydrogen atoms added and optimized by MolProbity. The Clashes column lists the number of clashes within the asymmetric unit, whereas Symm-Clashes lists symmetry related clashes.

Mol	Chain	Non-H	H(model)	H(added)	Clashes	Symm-Clashes
1	B	1749	0	1714	36	0
2	A	1570	0	1510	31	0
3	A	12	0	16	0	0
3	B	6	0	8	2	0
4	B	42	0	35	2	0
5	B	11	0	8	0	0
6	B	22	0	19	0	0
7	B	11	0	9	1	0
8	B	20	0	17	0	0
9	B	10	0	10	3	0
10	A	7	0	0	0	0

Continued on next page...

Continued from previous page...

Mol	Chain	Non-H	H(model)	H(added)	Clashes	Symm-Clashes
10	B	6	0	0	0	0
All	All	3466	0	3346	69	0

The all-atom clashscore is defined as the number of clashes found per 1000 atoms (including hydrogen atoms). The all-atom clashscore for this structure is 10.

All (69) close contacts within the same asymmetric unit are listed below, sorted by their clash magnitude.

Atom-1	Atom-2	Interatomic distance (Å)	Clash overlap (Å)
2:A:29:GLY:HA3	2:A:94:ARG:HG3	1.73	0.70
2:A:65:SER:HB3	2:A:72:THR:H	1.57	0.69
1:B:100(O):TYR:HB3	2:A:34:GLN:HG2	1.75	0.68
2:A:61:ARG:NH2	2:A:82:ASP:OD2	2.28	0.66
2:A:92:ASP:HB3	2:A:95:VAL:HB	1.81	0.62
3:B:301:GOL:O3	3:B:301:GOL:O1	2.18	0.62
2:A:195:GLN:HB2	2:A:204:GLU:HG3	1.83	0.59
2:A:133:LEU:HB2	2:A:179:LEU:HB3	1.84	0.59
1:B:94:ARG:NH2	1:B:100(Q):ASP:OD2	2.31	0.59
1:B:29:ILE:HD11	1:B:73:THR:HA	1.85	0.58
1:B:115:LYS:HE3	1:B:142:ASP:HB3	1.87	0.56
9:B:310:FUC:H61	2:A:42:GLN:HG3	1.88	0.56
1:B:32:SER:HB3	1:B:94:ARG:HG3	1.89	0.55
2:A:28:LEU:HD11	2:A:94:ARG:HH21	1.72	0.55
9:B:310:FUC:H61	2:A:42:GLN:CG	2.38	0.54
2:A:59:PRO:HG2	2:A:62:PHE:CD1	2.45	0.52
1:B:145:PRO:HD2	1:B:200:PRO:HB3	1.92	0.52
2:A:133:LEU:HD12	2:A:179:LEU:HD23	1.92	0.51
2:A:47:ILE:HA	2:A:58:ILE:HG13	1.92	0.51
1:B:2:MET:HE3	1:B:34:TRP:CZ3	2.46	0.51
2:A:145:VAL:HG12	2:A:198:HIS:HB2	1.93	0.50
1:B:59:TYR:HE1	1:B:69:LEU:HB2	1.78	0.48
3:B:301:GOL:HO3	3:B:301:GOL:HO1	1.61	0.48
1:B:2:MET:HE1	1:B:100(R):VAL:HB	1.95	0.48
2:A:120:PRO:HA	2:A:133:LEU:HD23	1.94	0.48
1:B:117:PRO:HB3	1:B:143:TYR:HB3	1.95	0.48
2:A:167:LYS:HG3	2:A:173:TYR:CZ	2.49	0.47
1:B:8:GLY:HA3	1:B:20:LEU:HD23	1.96	0.47
1:B:141:LYS:HD2	1:B:175:SER:OG	2.14	0.46
1:B:66:ARG:HD2	1:B:82(A):VAL:O	2.15	0.46
1:B:34:TRP:O	1:B:50:TYR:HA	2.15	0.46
2:A:67(A):SER:HB2	2:A:67(B):PRO:HA	1.97	0.46

Continued on next page...

Continued from previous page...

Atom-1	Atom-2	Interatomic distance (Å)	Clash overlap (Å)
1:B:18:LEU:HB3	1:B:82:LEU:HB3	1.98	0.46
1:B:2:MET:HE3	1:B:34:TRP:CH2	2.51	0.46
1:B:152:TRP:CH2	1:B:194:CYS:HB3	2.51	0.45
2:A:28:LEU:HG	2:A:94:ARG:HE	1.82	0.45
1:B:18:LEU:CD2	1:B:20:LEU:HG	2.46	0.45
1:B:198:HIS:CE1	1:B:200:PRO:HB2	2.52	0.45
1:B:2:MET:CE	1:B:94:ARG:HB2	2.48	0.44
2:A:121:PRO:HD2	2:A:186:TRP:CZ2	2.52	0.44
1:B:161:VAL:HG22	1:B:180:VAL:HB	2.00	0.44
2:A:59:PRO:HG2	2:A:62:PHE:HD1	1.82	0.43
1:B:28:SER:HB3	1:B:31:ASP:OD2	2.18	0.43
2:A:35:TRP:HB2	2:A:48:ILE:HB	2.00	0.43
1:B:2:MET:HE3	1:B:4:LEU:HD21	2.00	0.43
2:A:168:GLN:NE2	2:A:170:ASN:OD1	2.48	0.42
1:B:157:LEU:HD21	1:B:180:VAL:HG21	2.00	0.42
1:B:93:ALA:HB1	1:B:100(P):MET:HB3	2.00	0.42
2:A:55:PRO:HG2	2:A:58:ILE:HG12	2.02	0.42
2:A:137:ILE:HG12	2:A:196:VAL:HG21	2.01	0.42
1:B:12:VAL:O	1:B:109:VAL:HA	2.19	0.42
2:A:38:HIS:HB3	2:A:85:ASP:HB2	2.02	0.42
2:A:58:ILE:HA	2:A:59:PRO:HD2	1.82	0.42
1:B:144:PHE:CD1	1:B:145:PRO:HA	2.55	0.42
1:B:47:TRP:HB2	2:A:98:PHE:HE1	1.85	0.42
1:B:33:TYR:CD2	1:B:52:HIS:HB2	2.55	0.42
2:A:118:LEU:HD12	2:A:134:VAL:O	2.19	0.41
4:B:306:NAG:O3	7:B:307:GAL:O5	2.26	0.41
1:B:152:TRP:CZ3	1:B:194:CYS:HB3	2.54	0.41
2:A:157:LYS:H	2:A:157:LYS:HG2	1.47	0.41
1:B:193:ILE:HA	1:B:207:LYS:O	2.20	0.41
4:B:303:NAG:H5	9:B:310:FUC:O2	2.20	0.41
1:B:152:TRP:HB3	1:B:157:LEU:HD23	2.03	0.41
2:A:55:PRO:HG2	2:A:58:ILE:CG1	2.51	0.41
1:B:4:LEU:HD22	1:B:24:VAL:HG22	2.03	0.41
1:B:47:TRP:CZ2	1:B:50:TYR:HD2	2.39	0.41
1:B:29:ILE:HA	1:B:34:TRP:CZ2	2.55	0.40
1:B:2:MET:HE1	1:B:94:ARG:HB2	2.04	0.40
2:A:135:CYS:HB2	2:A:149:TRP:CZ2	2.57	0.40

There are no symmetry-related clashes.

5.3 Torsion angles [i](#)

5.3.1 Protein backbone [i](#)

In the following table, the Percentiles column shows the percent Ramachandran outliers of the chain as a percentile score with respect to all X-ray entries followed by that with respect to entries of similar resolution.

The Analysed column shows the number of residues for which the backbone conformation was analysed, and the total number of residues.

Mol	Chain	Analysed	Favoured	Allowed	Outliers	Percentiles	
1	B	230/235 (98%)	219 (95%)	10 (4%)	1 (0%)	36	70
2	A	206/211 (98%)	198 (96%)	8 (4%)	0	100	100
All	All	436/446 (98%)	417 (96%)	18 (4%)	1 (0%)	49	81

All (1) Ramachandran outliers are listed below:

Mol	Chain	Res	Type
1	B	42	GLY

5.3.2 Protein sidechains [i](#)

In the following table, the Percentiles column shows the percent sidechain outliers of the chain as a percentile score with respect to all X-ray entries followed by that with respect to entries of similar resolution.

The Analysed column shows the number of residues for which the sidechain conformation was analysed, and the total number of residues.

Mol	Chain	Analysed	Rotameric	Outliers	Percentiles	
1	B	199/202 (98%)	196 (98%)	3 (2%)	67	91
2	A	174/177 (98%)	169 (97%)	5 (3%)	45	79
All	All	373/379 (98%)	365 (98%)	8 (2%)	56	86

All (8) residues with a non-rotameric sidechain are listed below:

Mol	Chain	Res	Type
1	B	1	GLN
1	B	67	VAL
1	B	113	SER
2	A	65	SER
2	A	74	THR

Continued on next page...

Continued from previous page...

Mol	Chain	Res	Type
2	A	79	GLU
2	A	154	SER
2	A	168	GLN

Some sidechains can be flipped to improve hydrogen bonding and reduce clashes. All (1) such sidechains are listed below:

Mol	Chain	Res	Type
1	B	97	HIS

5.3.3 RNA [i](#)

There are no RNA molecules in this entry.

5.4 Non-standard residues in protein, DNA, RNA chains [i](#)

There are no non-standard protein/DNA/RNA residues in this entry.

5.5 Carbohydrates [i](#)

There are no carbohydrates in this entry.

5.6 Ligand geometry [i](#)

12 ligands are modelled in this entry.

In the following table, the Counts columns list the number of bonds (or angles) for which Mogul statistics could be retrieved, the number of bonds (or angles) that are observed in the model and the number of bonds (or angles) that are defined in the Chemical Component Dictionary. The Link column lists molecule types, if any, to which the group is linked. The Z score for a bond length (or angle) is the number of standard deviations the observed value is removed from the expected value. A bond length (or angle) with $|Z| > 2$ is considered an outlier worth inspection. RMSZ is the root-mean-square of all Z scores of the bond lengths (or angles).

Mol	Type	Chain	Res	Link	Bond lengths			Bond angles		
					Counts	RMSZ	$\# Z > 2$	Counts	RMSZ	$\# Z > 2$
3	GOL	A	301	-	5,5,5	0.40	0	5,5,5	0.34	0
3	GOL	A	302	-	5,5,5	0.26	0	5,5,5	0.46	0
3	GOL	B	301	-	5,5,5	0.37	0	5,5,5	0.27	0
4	NAG	B	302	1,9,4	14,14,15	0.77	0	17,19,21	1.96	4 (23%)

Mol	Type	Chain	Res	Link	Bond lengths			Bond angles		
					Counts	RMSZ	# Z > 2	Counts	RMSZ	# Z > 2
4	NAG	B	303	5,4	14,14,15	0.68	0	17,19,21	1.12	2 (11%)
5	BMA	B	304	4,6	11,11,12	0.67	0	15,15,17	0.99	1 (6%)
6	MAN	B	305	5,4	11,11,12	0.49	0	15,15,17	1.42	2 (13%)
4	NAG	B	306	7,6	14,14,15	0.79	1 (7%)	17,19,21	1.24	1 (5%)
7	GAL	B	307	8,4	11,11,12	0.70	0	15,15,17	1.17	2 (13%)
8	SIA	B	308	7	17,20,21	0.47	0	19,28,31	1.34	2 (10%)
6	MAN	B	309	5	11,11,12	0.90	1 (9%)	15,15,17	1.90	6 (40%)
9	FUC	B	310	4	9,10,11	1.09	1 (11%)	13,14,16	1.86	1 (7%)

In the following table, the Chirals column lists the number of chiral outliers, the number of chiral centers analysed, the number of these observed in the model and the number defined in the Chemical Component Dictionary. Similar counts are reported in the Torsion and Rings columns. '-' means no outliers of that kind were identified.

Mol	Type	Chain	Res	Link	Chirals	Torsions	Rings
3	GOL	A	301	-	-	0/4/4/4	0/0/0/0
3	GOL	A	302	-	-	0/4/4/4	0/0/0/0
3	GOL	B	301	-	-	0/4/4/4	0/0/0/0
4	NAG	B	302	1,9,4	-	0/6/23/26	0/1/1/1
4	NAG	B	303	5,4	-	0/6/23/26	0/1/1/1
5	BMA	B	304	4,6	-	0/2/19/22	0/1/1/1
6	MAN	B	305	5,4	-	0/2/19/22	0/1/1/1
4	NAG	B	306	7,6	-	0/6/23/26	0/1/1/1
7	GAL	B	307	8,4	-	0/2/19/22	0/1/1/1
8	SIA	B	308	7	-	0/14/34/38	0/1/1/1
6	MAN	B	309	5	-	0/2/19/22	0/1/1/1
9	FUC	B	310	4	-	0/0/17/20	0/1/1/1

All (3) bond length outliers are listed below:

Mol	Chain	Res	Type	Atoms	Z	Observed(Å)	Ideal(Å)
4	B	306	NAG	O5-C1	-2.16	1.40	1.43
6	B	309	MAN	O5-C1	-2.12	1.40	1.43
9	B	310	FUC	C6-C5	2.15	1.56	1.51

All (21) bond angle outliers are listed below:

Mol	Chain	Res	Type	Atoms	Z	Observed(°)	Ideal(°)
9	B	310	FUC	O3-C3-C2	-5.26	100.26	110.04
4	B	302	NAG	O6-C6-C5	-4.63	95.15	111.29

Continued on next page...

Continued from previous page...

Mol	Chain	Res	Type	Atoms	Z	Observed(°)	Ideal(°)
4	B	302	NAG	C1-O5-C5	-4.14	106.49	112.19
6	B	309	MAN	C1-O5-C5	-4.03	106.65	112.19
8	B	308	SIA	C3-C4-C5	-3.45	107.29	111.46
4	B	302	NAG	C2-N2-C7	-2.80	118.86	122.94
6	B	305	MAN	C2-C3-C4	-2.75	106.08	110.87
7	B	307	GAL	O5-C5-C4	-2.63	104.42	110.83
4	B	302	NAG	O4-C4-C3	-2.55	104.39	110.34
8	B	308	SIA	C6-C5-N5	-2.27	107.02	110.94
6	B	309	MAN	O3-C3-C2	-2.25	105.84	110.04
6	B	309	MAN	O5-C1-C2	-2.21	107.33	110.78
7	B	307	GAL	C3-C4-C5	-2.21	106.29	110.24
4	B	303	NAG	C4-C3-C2	-2.17	107.84	111.02
4	B	303	NAG	C2-N2-C7	-2.06	119.94	122.94
5	B	304	BMA	C1-C2-C3	2.08	112.30	109.66
6	B	309	MAN	C2-C3-C4	2.21	114.70	110.87
6	B	309	MAN	O5-C5-C6	2.45	111.02	107.15
4	B	306	NAG	C2-N2-C7	2.70	126.89	122.94
6	B	309	MAN	O2-C2-C1	3.02	115.26	109.17
6	B	305	MAN	C1-O5-C5	3.35	116.80	112.19

There are no chirality outliers.

There are no torsion outliers.

There are no ring outliers.

5 monomers are involved in 6 short contacts:

Mol	Chain	Res	Type	Clashes	Symm-Clashes
3	B	301	GOL	2	0
4	B	303	NAG	1	0
4	B	306	NAG	1	0
7	B	307	GAL	1	0
9	B	310	FUC	3	0

5.7 Other polymers [i](#)

There are no such residues in this entry.

5.8 Polymer linkage issues [i](#)

There are no chain breaks in this entry.

6 Fit of model and data [i](#)

6.1 Protein, DNA and RNA chains [i](#)

In the following table, the column labelled ‘#RSRZ > 2’ contains the number (and percentage) of RSRZ outliers, followed by percent RSRZ outliers for the chain as percentile scores relative to all X-ray entries and entries of similar resolution. The OWAB column contains the minimum, median, 95th percentile and maximum values of the occupancy-weighted average B-factor per residue. The column labelled ‘Q < 0.9’ lists the number of (and percentage) of residues with an average occupancy less than 0.9.

Mol	Chain	Analysed	<RSRZ>	#RSRZ>2	OWAB(Å ²)	Q<0.9
1	B	232/235 (98%)	-0.07	5 (2%) 62 52	32, 50, 69, 89	0
2	A	208/211 (98%)	-0.16	5 (2%) 59 49	29, 52, 73, 94	0
All	All	440/446 (98%)	-0.12	10 (2%) 60 51	29, 51, 71, 94	0

All (10) RSRZ outliers are listed below:

Mol	Chain	Res	Type	RSRZ
1	B	43	LYS	3.6
1	B	170	SER	3.0
2	A	157	LYS	2.7
2	A	169	SER	2.7
1	B	1	GLN	2.6
2	A	211	GLU	2.4
2	A	56	SER	2.3
1	B	42	GLY	2.3
1	B	100(C)	GLY	2.0
2	A	210	THR	2.0

6.2 Non-standard residues in protein, DNA, RNA chains [i](#)

There are no non-standard protein/DNA/RNA residues in this entry.

6.3 Carbohydrates [i](#)

There are no carbohydrates in this entry.

6.4 Ligands [i](#)

In the following table, the Atoms column lists the number of modelled atoms in the group and the number defined in the chemical component dictionary. The B-factors column lists the minimum, median, 95th percentile and maximum values of B factors of atoms in the group. The column labelled 'Q<0.9' lists the number of atoms with occupancy less than 0.9.

Mol	Type	Chain	Res	Atoms	RSCC	RSR	B-factors(Å ²)	Q<0.9
8	SIA	B	308	20/21	0.83	0.48	86,107,127,129	0
3	GOL	A	302	6/6	0.85	0.28	59,65,91,92	0
6	MAN	B	309	11/12	0.85	0.27	53,82,94,94	0
9	FUC	B	310	10/11	0.86	0.41	76,88,91,94	0
3	GOL	B	301	6/6	0.88	0.29	77,80,89,89	0
7	GAL	B	307	11/12	0.88	0.20	66,81,106,107	0
4	NAG	B	306	14/15	0.92	0.18	48,62,80,84	0
3	GOL	A	301	6/6	0.93	0.20	54,58,64,71	0
4	NAG	B	303	14/15	0.94	0.18	42,55,61,63	0
4	NAG	B	302	14/15	0.94	0.20	49,59,88,100	0
6	MAN	B	305	11/12	0.95	0.14	52,67,78,78	0
5	BMA	B	304	11/12	0.96	0.12	48,51,55,58	0

6.5 Other polymers [i](#)

There are no such residues in this entry.