



Full wwPDB X-ray Structure Validation Report ⓘ

Nov 15, 2023 – 06:29 PM JST

PDB ID : 6JZ1
Title : Apo structure of b-glucuronidase from Ruminococcus gnavus at 1.7 Angstrom resolution
Authors : Dashnyam, P.; Lin, H.Y.
Deposited on : 2019-04-30
Resolution : 1.73 Å(reported)

This is a Full wwPDB X-ray Structure Validation Report for a publicly released PDB entry.

We welcome your comments at validation@mail.wwpdb.org

A user guide is available at

<https://www.wwpdb.org/validation/2017/XrayValidationReportHelp>

with specific help available everywhere you see the ⓘ symbol.

The types of validation reports are described at

<http://www.wwpdb.org/validation/2017/FAQs#types>.

The following versions of software and data (see [references ⓘ](#)) were used in the production of this report:

MolProbity : 4.02b-467
Mogul : 1.8.5 (274361), CSD as541be (2020)
Xtriage (Phenix) : 1.13
EDS : 2.36
Percentile statistics : 20191225.v01 (using entries in the PDB archive December 25th 2019)
Refmac : 5.8.0158
CCP4 : 7.0.044 (Gargrove)
Ideal geometry (proteins) : Engh & Huber (2001)
Ideal geometry (DNA, RNA) : Parkinson et al. (1996)
Validation Pipeline (wwPDB-VP) : 2.36

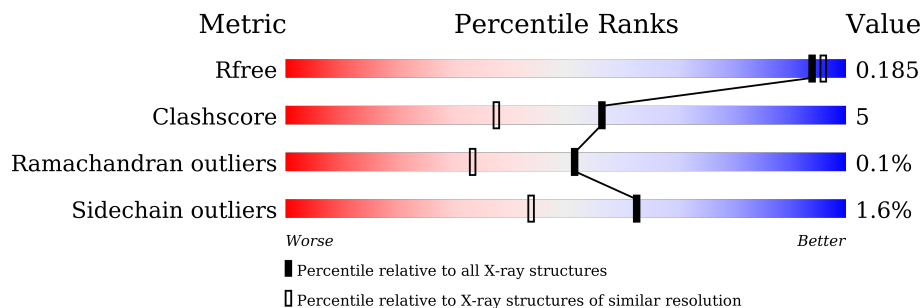
1 Overall quality at a glance

The following experimental techniques were used to determine the structure:

X-RAY DIFFRACTION

The reported resolution of this entry is 1.73 Å.

Percentile scores (ranging between 0-100) for global validation metrics of the entry are shown in the following graphic. The table shows the number of entries on which the scores are based.



Metric	Whole archive (#Entries)	Similar resolution (#Entries, resolution range(Å))
R_{free}	130704	3764 (1.76-1.72)
Clashscore	141614	3923 (1.76-1.72)
Ramachandran outliers	138981	3878 (1.76-1.72)
Sidechain outliers	138945	3878 (1.76-1.72)

The table below summarises the geometric issues observed across the polymeric chains and their fit to the electron density. The red, orange, yellow and green segments of the lower bar indicate the fraction of residues that contain outliers for ≥ 3 , 2, 1 and 0 types of geometric quality criteria respectively. A grey segment represents the fraction of residues that are not modelled. The numeric value for each fraction is indicated below the corresponding segment, with a dot representing fractions $\leq 5\%$.

Mol	Chain	Length	Quality of chain
1	A	603	 85% 10% 5%
1	B	603	 87% 10% .

2 Entry composition [i](#)

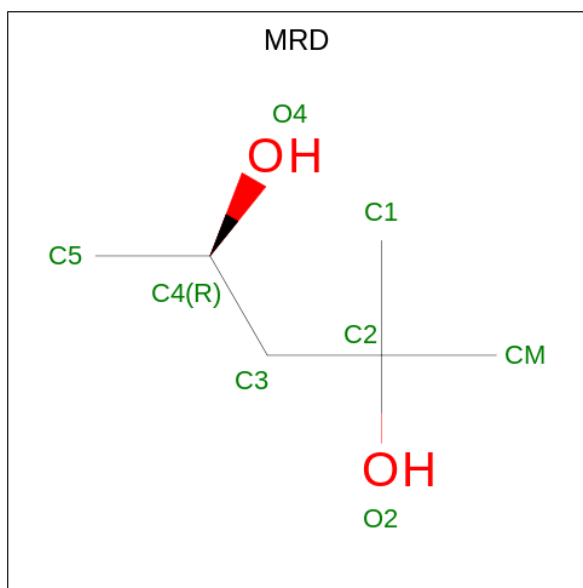
There are 3 unique types of molecules in this entry. The entry contains 10473 atoms, of which 0 are hydrogens and 0 are deuteriums.

In the tables below, the ZeroOcc column contains the number of atoms modelled with zero occupancy, the AltConf column contains the number of residues with at least one atom in alternate conformation and the Trace column contains the number of residues modelled with at most 2 atoms.

- Molecule 1 is a protein called Beta-glucuronidase.

Mol	Chain	Residues	Atoms					ZeroOcc	AltConf	Trace
			Total	C	N	O	S			
1	A	574	Total 4701	C 3034	N 763	O 881	S 23	0	0	0
1	B	585	Total 4793	C 3087	N 783	O 899	S 24	0	0	0

- Molecule 2 is (4R)-2-METHYLPENTANE-2,4-DIOL (three-letter code: MRD) (formula: $C_6H_{14}O_2$).



Mol	Chain	Residues	Atoms			ZeroOcc	AltConf
			Total	C	O		
2	A	1	Total 8	C 6	O 2	0	0
2	B	1	Total 8	C 6	O 2	0	0
2	B	1	Total 8	C 6	O 2	0	0

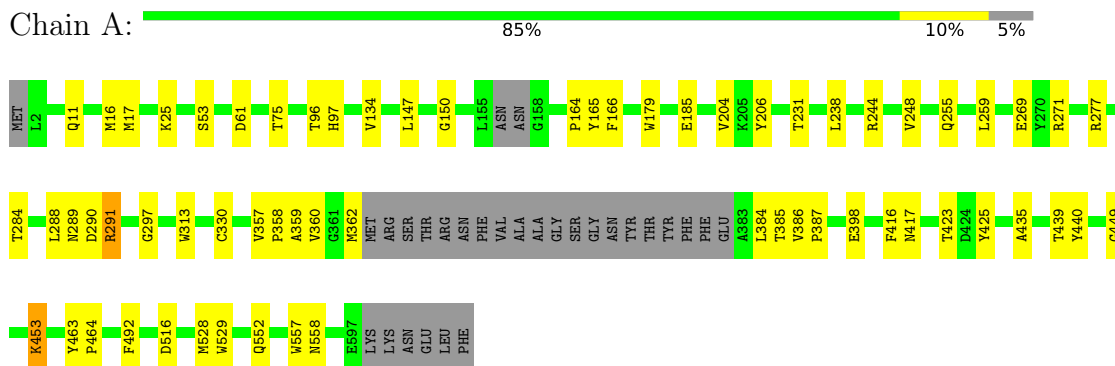
- Molecule 3 is water.

Mol	Chain	Residues	Atoms		ZeroOcc	AltConf
3	A	449	Total 449	O 449	0	0
3	B	506	Total 506	O 506	0	0

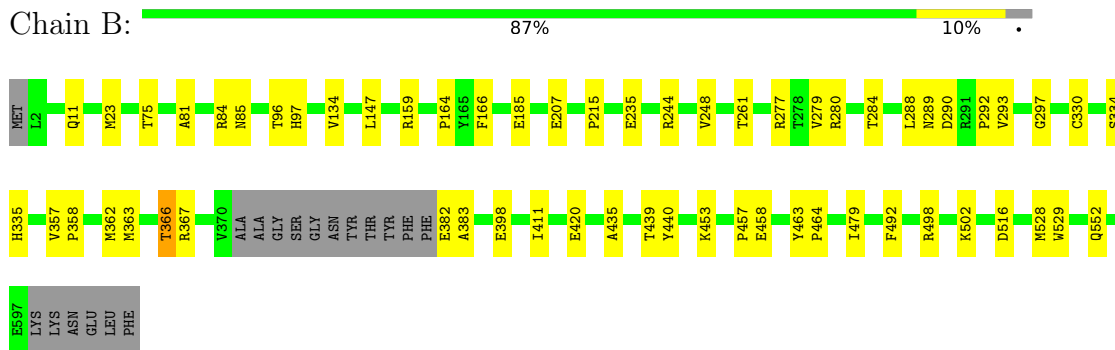
3 Residue-property plots [i](#)

These plots are drawn for all protein, RNA, DNA and oligosaccharide chains in the entry. The first graphic for a chain summarises the proportions of the various outlier classes displayed in the second graphic. The second graphic shows the sequence view annotated by issues in geometry. Residues are color-coded according to the number of geometric quality criteria for which they contain at least one outlier: green = 0, yellow = 1, orange = 2 and red = 3 or more. Stretches of 2 or more consecutive residues without any outlier are shown as a green connector. Residues present in the sample, but not in the model, are shown in grey.

- Molecule 1: Beta-glucuronidase



- Molecule 1: Beta-glucuronidase



4 Data and refinement statistics

Property	Value	Source
Space group	C 1 2 1	Depositor
Cell constants a, b, c, α , β , γ	163.01Å 103.13Å 112.62Å 90.00° 130.96° 90.00°	Depositor
Resolution (Å)	29.71 – 1.73 29.71 – 1.73	Depositor EDS
% Data completeness (in resolution range)	97.4 (29.71-1.73) 97.4 (29.71-1.73)	Depositor EDS
R_{merge}	0.06	Depositor
R_{sym}	(Not available)	Depositor
$\langle I/\sigma(I) \rangle$ ¹	2.29 (at 1.73Å)	Xtrriage
Refinement program	PHENIX 19-1692	Depositor
R, R_{free}	0.116 , 0.192 0.162 , 0.185	Depositor DCC
R_{free} test set	2004 reflections (1.41%)	wwPDB-VP
Wilson B-factor (Å ²)	19.3	Xtrriage
Anisotropy	0.026	Xtrriage
Bulk solvent k_{sol} (e/Å ³), B_{sol} (Å ²)	0.38 , 53.4	EDS
L-test for twinning ²	$\langle L \rangle = 0.49$, $\langle L^2 \rangle = 0.32$	Xtrriage
Estimated twinning fraction	0.019 for -h-2*1,-k,l	Xtrriage
F_o, F_c correlation	0.96	EDS
Total number of atoms	10473	wwPDB-VP
Average B, all atoms (Å ²)	23.0	wwPDB-VP

Xtrriage's analysis on translational NCS is as follows: *The largest off-origin peak in the Patterson function is 4.21% of the height of the origin peak. No significant pseudotranslation is detected.*

¹Intensities estimated from amplitudes.

²Theoretical values of $\langle |L| \rangle$, $\langle L^2 \rangle$ for acentric reflections are 0.5, 0.333 respectively for untwinned datasets, and 0.375, 0.2 for perfectly twinned datasets.

5 Model quality

5.1 Standard geometry

Bond lengths and bond angles in the following residue types are not validated in this section: MRD

The Z score for a bond length (or angle) is the number of standard deviations the observed value is removed from the expected value. A bond length (or angle) with $|Z| > 5$ is considered an outlier worth inspection. RMSZ is the root-mean-square of all Z scores of the bond lengths (or angles).

Mol	Chain	Bond lengths		Bond angles	
		RMSZ	# Z >5	RMSZ	# Z >5
1	A	0.42	0/4834	0.55	0/6554
1	B	0.44	0/4928	0.56	0/6681
All	All	0.43	0/9762	0.55	0/13235

There are no bond length outliers.

There are no bond angle outliers.

There are no chirality outliers.

There are no planarity outliers.

5.2 Too-close contacts

In the following table, the Non-H and H(model) columns list the number of non-hydrogen atoms and hydrogen atoms in the chain respectively. The H(added) column lists the number of hydrogen atoms added and optimized by MolProbity. The Clashes column lists the number of clashes within the asymmetric unit, whereas Symm-Clashes lists symmetry-related clashes.

Mol	Chain	Non-H	H(model)	H(added)	Clashes	Symm-Clashes
1	A	4701	0	4493	46	0
1	B	4793	0	4576	48	0
2	A	8	0	13	0	0
2	B	16	0	28	0	0
3	A	449	0	0	3	0
3	B	506	0	0	6	0
All	All	10473	0	9110	93	0

The all-atom clashscore is defined as the number of clashes found per 1000 atoms (including hydrogen atoms). The all-atom clashscore for this structure is 5.

All (93) close contacts within the same asymmetric unit are listed below, sorted by their clash

magnitude.

Atom-1	Atom-2	Interatomic distance (Å)	Clash overlap (Å)
1:A:384:LEU:O	1:A:387:PRO:HD2	1.34	1.27
1:B:248:VAL:HG23	1:B:288:LEU:HD23	1.50	0.91
1:A:384:LEU:O	1:A:387:PRO:CD	2.21	0.88
1:B:248:VAL:HG23	1:B:288:LEU:CD2	2.04	0.88
1:A:291:ARG:HH11	1:A:291:ARG:HG2	1.39	0.85
1:B:248:VAL:CG2	1:B:288:LEU:CD2	2.55	0.85
1:A:398:GLU:HG3	1:A:440:TYR:CE2	2.12	0.84
1:B:280:ARG:HD2	3:B:842:HOH:O	1.80	0.80
1:A:255:GLN:OE1	1:A:271:ARG:HD3	1.81	0.79
1:A:291:ARG:HG2	1:A:291:ARG:NH1	2.01	0.76
1:B:453:LYS:HD3	1:B:479:ILE:HD11	1.69	0.74
1:A:248:VAL:CG2	1:A:288:LEU:HD22	2.26	0.66
1:B:289:ASN:O	1:B:290:ASP:HB2	1.97	0.64
1:A:147:LEU:HD21	1:A:362:MET:CE	2.27	0.64
1:A:360:VAL:HG12	1:A:417:ASN:HB3	1.79	0.64
1:B:280:ARG:HH21	1:B:280:ARG:HG2	1.62	0.63
1:B:453:LYS:HD3	1:B:479:ILE:CD1	2.30	0.61
1:B:363:MET:HB3	1:B:366:THR:HG23	1.82	0.61
1:A:248:VAL:HG23	1:A:288:LEU:HD22	1.83	0.60
1:B:207:GLU:HG2	1:B:235:GLU:HG2	1.82	0.60
1:B:248:VAL:CG2	1:B:288:LEU:HD22	2.32	0.59
1:A:259:LEU:CD2	1:A:269:GLU:HG3	2.33	0.59
1:A:423:THR:HB	1:A:425:TYR:HD2	1.68	0.59
1:B:528:MET:O	1:B:529:TRP:HB2	2.04	0.57
1:A:425:TYR:CD2	1:A:425:TYR:N	2.73	0.57
1:B:248:VAL:CG2	1:B:288:LEU:HD23	2.23	0.57
1:B:458:GLU:OE2	1:B:498:ARG:HD2	2.05	0.57
1:A:259:LEU:HD23	1:A:269:GLU:HG3	1.85	0.56
1:B:435:ALA:O	1:B:439:THR:HG23	2.05	0.56
1:A:147:LEU:HD21	1:A:362:MET:HE3	1.87	0.56
1:A:453:LYS:O	1:A:453:LYS:HG2	2.06	0.56
1:B:284:THR:O	1:B:552:GLN:HG3	2.06	0.56
1:A:398:GLU:HG3	1:A:440:TYR:CD2	2.41	0.55
1:A:528:MET:O	1:A:529:TRP:HB2	2.08	0.54
1:A:463:TYR:CG	1:A:464:PRO:HD3	2.44	0.53
1:B:362:MET:HB2	3:B:1114:HOH:O	2.08	0.52
1:B:382:GLU:HG3	1:B:383:ALA:H	1.74	0.52
1:B:279:VAL:HG21	1:B:411:ILE:HG22	1.92	0.51
1:A:284:THR:O	1:A:552:GLN:HG3	2.12	0.50
1:A:289:ASN:O	1:A:290:ASP:HB2	2.11	0.50
1:B:398:GLU:HB2	1:B:440:TYR:CE2	2.48	0.49

Continued on next page...

Continued from previous page...

Atom-1	Atom-2	Interatomic distance (Å)	Clash overlap (Å)
1:A:248:VAL:HG23	1:A:288:LEU:CD2	2.43	0.49
1:A:416:PHE:CZ	1:A:449:GLY:HA3	2.48	0.49
1:B:215:PRO:HD2	1:B:261:THR:O	2.13	0.49
1:A:357:VAL:HG22	1:A:358:PRO:CD	2.43	0.48
1:A:147:LEU:HD22	1:A:359:ALA:HA	1.95	0.48
1:A:185:GLU:OE2	3:A:801:HOH:O	2.20	0.48
1:B:81:ALA:O	1:B:84:ARG:HG2	2.13	0.47
1:B:382:GLU:HG3	1:B:383:ALA:N	2.30	0.47
1:B:75:THR:HG22	1:B:134:VAL:CG1	2.44	0.47
1:A:384:LEU:C	1:A:386:VAL:H	2.18	0.47
1:A:357:VAL:HG22	1:A:358:PRO:HD2	1.96	0.46
1:A:435:ALA:O	1:A:439:THR:HG23	2.15	0.46
1:A:463:TYR:N	1:A:464:PRO:CD	2.78	0.46
1:A:25:LYS:HE2	3:A:1196:HOH:O	2.16	0.46
1:B:248:VAL:HG22	1:B:288:LEU:HD22	1.98	0.46
1:B:463:TYR:N	1:B:464:PRO:CD	2.78	0.46
1:B:164:PRO:HB3	1:B:166:PHE:CZ	2.51	0.45
1:B:453:LYS:CD	1:B:479:ILE:HD11	2.44	0.45
1:A:96:THR:HA	1:A:97:HIS:HA	1.79	0.44
1:B:248:VAL:HG22	1:B:288:LEU:CD2	2.41	0.44
1:B:463:TYR:CG	1:B:464:PRO:HD3	2.53	0.44
1:A:384:LEU:O	1:A:386:VAL:N	2.50	0.43
1:B:96:THR:HA	1:B:97:HIS:HA	1.83	0.43
1:A:204:VAL:HB	1:A:238:LEU:HB2	2.01	0.43
1:B:185:GLU:O	1:B:185:GLU:HG2	2.18	0.43
1:A:416:PHE:CE1	1:A:449:GLY:HA3	2.54	0.42
1:A:17:MET:HE2	1:A:179:TRP:CH2	2.54	0.42
1:A:384:LEU:C	1:A:386:VAL:N	2.72	0.42
1:B:159:ARG:HD2	3:B:957:HOH:O	2.19	0.42
1:B:280:ARG:HH21	1:B:280:ARG:CG	2.26	0.42
1:A:75:THR:HG22	1:A:134:VAL:CG1	2.50	0.42
1:B:280:ARG:HG2	1:B:280:ARG:NH2	2.31	0.42
1:A:206:TYR:HE2	1:A:231:THR:HG21	1.84	0.42
1:B:293:VAL:HG12	3:B:1107:HOH:O	2.20	0.42
1:A:362:MET:HB2	3:A:1122:HOH:O	2.19	0.42
1:B:357:VAL:HG22	1:B:358:PRO:CD	2.50	0.42
1:B:516:ASP:HB3	1:B:529:TRP:CZ3	2.55	0.41
1:A:516:ASP:O	1:A:529:TRP:HA	2.20	0.41
1:B:147:LEU:HD21	1:B:362:MET:CE	2.50	0.41
1:B:297:GLY:HA3	1:B:330:CYS:O	2.20	0.41
1:A:297:GLY:HA3	1:A:330:CYS:O	2.19	0.41

Continued on next page...

Continued from previous page...

Atom-1	Atom-2	Interatomic distance (Å)	Clash overlap (Å)
1:A:313:TRP:CD2	1:B:23:MET:HG2	2.55	0.41
1:B:516:ASP:O	1:B:529:TRP:HA	2.21	0.41
1:A:164:PRO:HB3	1:A:166:PHE:CZ	2.56	0.41
1:B:292:PRO:HG2	3:B:946:HOH:O	2.20	0.41
1:B:84:ARG:O	1:B:85:ASN:HB2	2.20	0.41
1:B:164:PRO:HB3	1:B:166:PHE:CE1	2.56	0.41
1:B:363:MET:HG3	3:B:1229:HOH:O	2.20	0.41
1:B:334:SER:HA	1:B:335:HIS:HA	1.81	0.40
1:B:457:PRO:O	1:B:502:LYS:HE3	2.21	0.40
1:A:150:GLY:HA2	1:A:165:TYR:CG	2.55	0.40
1:A:557:TRP:HA	1:A:558:ASN:HA	1.91	0.40

There are no symmetry-related clashes.

5.3 Torsion angles [i](#)

5.3.1 Protein backbone [i](#)

In the following table, the Percentiles column shows the percent Ramachandran outliers of the chain as a percentile score with respect to all X-ray entries followed by that with respect to entries of similar resolution.

The Analysed column shows the number of residues for which the backbone conformation was analysed, and the total number of residues.

Mol	Chain	Analysed	Favoured	Allowed	Outliers	Percentiles
1	A	568/603 (94%)	550 (97%)	17 (3%)	1 (0%)	47 29
1	B	581/603 (96%)	563 (97%)	18 (3%)	0	100 100
All	All	1149/1206 (95%)	1113 (97%)	35 (3%)	1 (0%)	51 33

All (1) Ramachandran outliers are listed below:

Mol	Chain	Res	Type
1	A	385	THR

5.3.2 Protein sidechains [i](#)

In the following table, the Percentiles column shows the percent sidechain outliers of the chain as a percentile score with respect to all X-ray entries followed by that with respect to entries of similar resolution.

The Analysed column shows the number of residues for which the sidechain conformation was analysed, and the total number of residues.

Mol	Chain	Analysed	Rotameric	Outliers	Percentiles	
1	A	500/525 (95%)	491 (98%)	9 (2%)	59	38
1	B	510/525 (97%)	503 (99%)	7 (1%)	67	50
All	All	1010/1050 (96%)	994 (98%)	16 (2%)	62	44

All (16) residues with a non-rotameric sidechain are listed below:

Mol	Chain	Res	Type
1	A	11	GLN
1	A	16	MET
1	A	53	SER
1	A	61	ASP
1	A	244	ARG
1	A	277	ARG
1	A	291	ARG
1	A	453	LYS
1	A	492	PHE
1	B	11	GLN
1	B	244	ARG
1	B	277	ARG
1	B	366	THR
1	B	367	ARG
1	B	420	GLU
1	B	492	PHE

Sometimes sidechains can be flipped to improve hydrogen bonding and reduce clashes. All (1) such sidechains are listed below:

Mol	Chain	Res	Type
1	A	62	HIS

5.3.3 RNA [i](#)

There are no RNA molecules in this entry.

5.4 Non-standard residues in protein, DNA, RNA chains [i](#)

There are no non-standard protein/DNA/RNA residues in this entry.

5.5 Carbohydrates [i](#)

There are no monosaccharides in this entry.

5.6 Ligand geometry [i](#)

3 ligands are modelled in this entry.

In the following table, the Counts columns list the number of bonds (or angles) for which Mogul statistics could be retrieved, the number of bonds (or angles) that are observed in the model and the number of bonds (or angles) that are defined in the Chemical Component Dictionary. The Link column lists molecule types, if any, to which the group is linked. The Z score for a bond length (or angle) is the number of standard deviations the observed value is removed from the expected value. A bond length (or angle) with $|Z| > 2$ is considered an outlier worth inspection. RMSZ is the root-mean-square of all Z scores of the bond lengths (or angles).

Mol	Type	Chain	Res	Link	Bond lengths			Bond angles		
					Counts	RMSZ	# Z > 2	Counts	RMSZ	# Z > 2
2	MRD	A	701	-	7,7,7	1.12	1 (14%)	9,10,10	0.74	0
2	MRD	B	701	-	7,7,7	1.38	1 (14%)	9,10,10	0.62	0
2	MRD	B	702	-	7,7,7	1.16	1 (14%)	9,10,10	0.99	0

In the following table, the Chirals column lists the number of chiral outliers, the number of chiral centers analysed, the number of these observed in the model and the number defined in the Chemical Component Dictionary. Similar counts are reported in the Torsion and Rings columns. '-' means no outliers of that kind were identified.

Mol	Type	Chain	Res	Link	Chirals	Torsions	Rings
2	MRD	A	701	-	-	1/5/5/5	-
2	MRD	B	701	-	-	1/5/5/5	-
2	MRD	B	702	-	-	4/5/5/5	-

All (3) bond length outliers are listed below:

Mol	Chain	Res	Type	Atoms	Z	Observed(Å)	Ideal(Å)
2	B	701	MRD	O2-C2	-2.75	1.37	1.44
2	B	702	MRD	O2-C2	-2.36	1.38	1.44
2	A	701	MRD	O2-C2	-2.26	1.39	1.44

There are no bond angle outliers.

There are no chirality outliers.

All (6) torsion outliers are listed below:

Mol	Chain	Res	Type	Atoms
2	B	701	MRD	O2-C2-C3-C4
2	B	702	MRD	O2-C2-C3-C4
2	A	701	MRD	C1-C2-C3-C4
2	B	702	MRD	C1-C2-C3-C4
2	B	702	MRD	CM-C2-C3-C4
2	B	702	MRD	C2-C3-C4-O4

There are no ring outliers.

No monomer is involved in short contacts.

5.7 Other polymers [i](#)

There are no such residues in this entry.

5.8 Polymer linkage issues [i](#)

There are no chain breaks in this entry.

6 Fit of model and data [i](#)

6.1 Protein, DNA and RNA chains [i](#)

Unable to reproduce the depositors R factor - this section is therefore empty.

6.2 Non-standard residues in protein, DNA, RNA chains [i](#)

Unable to reproduce the depositors R factor - this section is therefore empty.

6.3 Carbohydrates [i](#)

Unable to reproduce the depositors R factor - this section is therefore empty.

6.4 Ligands [i](#)

Unable to reproduce the depositors R factor - this section is therefore empty.

6.5 Other polymers [i](#)

Unable to reproduce the depositors R factor - this section is therefore empty.