



# Full wwPDB X-ray Structure Validation Report ⓘ

Jan 21, 2025 – 02:11 PM JST

PDB ID : 8K09  
Title : Pq3-O-UGT2 with 20(S)-Ginsenoside F2  
Authors : Mei, K.R.; Ji, Q.S.; Liu, Y.R.  
Deposited on : 2023-07-07  
Resolution : 3.36 Å(reported)

This is a Full wwPDB X-ray Structure Validation Report for a publicly released PDB entry.

We welcome your comments at [validation@mail.wwpdb.org](mailto:validation@mail.wwpdb.org)

A user guide is available at

<https://www.wwpdb.org/validation/2017/XrayValidationReportHelp>

with specific help available everywhere you see the ⓘ symbol.

The types of validation reports are described at

<http://www.wwpdb.org/validation/2017/FAQs#types>.

---

The following versions of software and data (see [references ⓘ](#)) were used in the production of this report:

MolProbity : 4.02b-467  
Mogul : 1.8.5 (274361), CSD as541be (2020)  
Xtriage (Phenix) : 1.21  
EDS : 3.0  
buster-report : 1.1.7 (2018)  
Percentile statistics : 20231227.v01 (using entries in the PDB archive December 27th 2023)  
CCP4 : 9.0.004 (Gargrove)  
Density-Fitness : 1.0.11  
Ideal geometry (proteins) : Engh & Huber (2001)  
Ideal geometry (DNA, RNA) : Parkinson et al. (1996)  
Validation Pipeline (wwPDB-VP) : 2.40

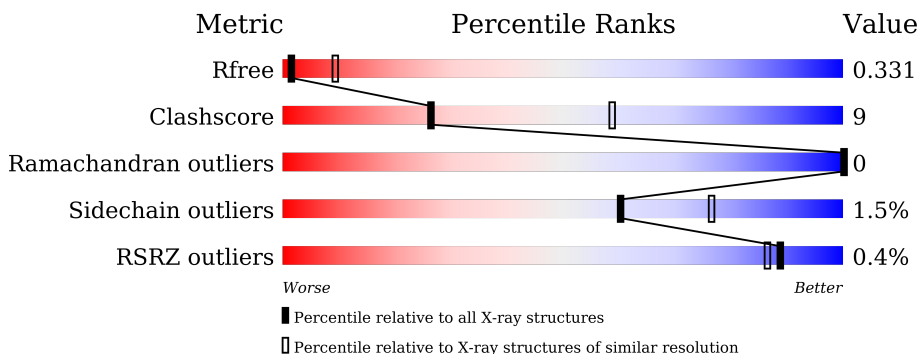
# 1 Overall quality at a glance

The following experimental techniques were used to determine the structure:

*X-RAY DIFFRACTION*

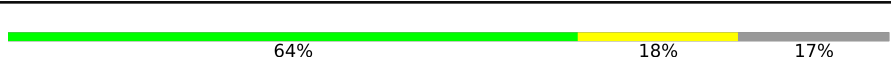

The reported resolution of this entry is 3.36 Å.

Percentile scores (ranging between 0-100) for global validation metrics of the entry are shown in the following graphic. The table shows the number of entries on which the scores are based.



Metric	Whole archive (#Entries)	Similar resolution (#Entries, resolution range(Å))
$R_{free}$	164625	1012 (3.40-3.32)
Clashscore	180529	1035 (3.40-3.32)
Ramachandran outliers	177936	1037 (3.40-3.32)
Sidechain outliers	177891	1037 (3.40-3.32)
RSRZ outliers	164620	1012 (3.40-3.32)

The table below summarises the geometric issues observed across the polymeric chains and their fit to the electron density. The red, orange, yellow and green segments of the lower bar indicate the fraction of residues that contain outliers for  $\geq 3$ , 2, 1 and 0 types of geometric quality criteria respectively. A grey segment represents the fraction of residues that are not modelled. The numeric value for each fraction is indicated below the corresponding segment, with a dot representing fractions  $\leq 5\%$ . The upper red bar (where present) indicates the fraction of residues that have poor fit to the electron density. The numeric value is given above the bar.

Mol	Chain	Length	Quality of chain
1	A	455	 64% 18% 17%
1	C	455	 69% 16% 14%

## 2 Entry composition i

There are 2 unique types of molecules in this entry. The entry contains 6103 atoms, of which 0 are hydrogens and 0 are deuteriums.

In the tables below, the ZeroOcc column contains the number of atoms modelled with zero occupancy, the AltConf column contains the number of residues with at least one atom in alternate conformation and the Trace column contains the number of residues modelled with at most 2 atoms.

- Molecule 1 is a protein called Glycosyltransferase.

Mol	Chain	Residues	Atoms					ZeroOcc	AltConf	Trace
			Total	C	N	O	S			
1	C	390	Total 3059	C 1959	N 516	O 572	S 12	0	0	0
1	A	376	Total 2934	C 1880	N 492	O 550	S 12	0	0	0

There are 26 discrepancies between the modelled and reference sequences:

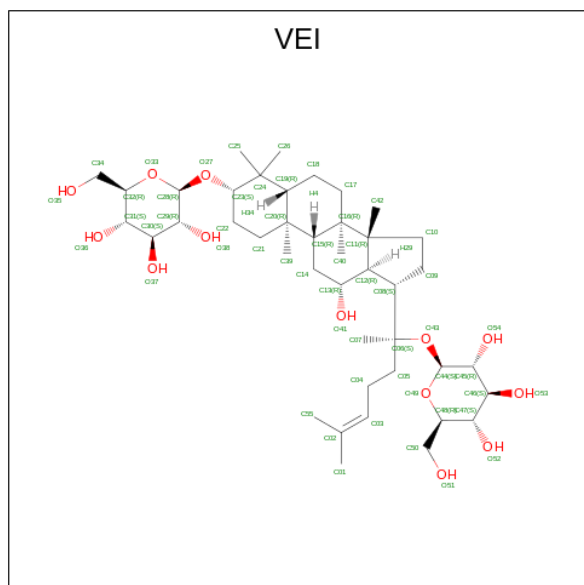
Chain	Residue	Modelled	Actual	Comment	Reference
C	443	GLU	-	expression tag	UNP A0A0M4ME80
C	444	ASN	-	expression tag	UNP A0A0M4ME80
C	445	LEU	-	expression tag	UNP A0A0M4ME80
C	446	TYR	-	expression tag	UNP A0A0M4ME80
C	447	PHE	-	expression tag	UNP A0A0M4ME80
C	448	GLN	-	expression tag	UNP A0A0M4ME80
C	449	GLY	-	expression tag	UNP A0A0M4ME80
C	450	HIS	-	expression tag	UNP A0A0M4ME80
C	451	HIS	-	expression tag	UNP A0A0M4ME80
C	452	HIS	-	expression tag	UNP A0A0M4ME80
C	453	HIS	-	expression tag	UNP A0A0M4ME80
C	454	HIS	-	expression tag	UNP A0A0M4ME80
C	455	HIS	-	expression tag	UNP A0A0M4ME80
A	443	GLU	-	expression tag	UNP A0A0M4ME80
A	444	ASN	-	expression tag	UNP A0A0M4ME80
A	445	LEU	-	expression tag	UNP A0A0M4ME80
A	446	TYR	-	expression tag	UNP A0A0M4ME80
A	447	PHE	-	expression tag	UNP A0A0M4ME80
A	448	GLN	-	expression tag	UNP A0A0M4ME80
A	449	GLY	-	expression tag	UNP A0A0M4ME80
A	450	HIS	-	expression tag	UNP A0A0M4ME80
A	451	HIS	-	expression tag	UNP A0A0M4ME80
A	452	HIS	-	expression tag	UNP A0A0M4ME80
A	453	HIS	-	expression tag	UNP A0A0M4ME80
A	454	HIS	-	expression tag	UNP A0A0M4ME80

*Continued on next page...*

Continued from previous page...

Chain	Residue	Modelled	Actual	Comment	Reference
A	455	HIS	-	expression tag	UNP A0A0M4ME80

- Molecule 2 is (2 {R},3 {S},4 {S},5 {R},6 {R})-2-(hydroxymethyl)-6-[[[(3 {S},5 {R},8 {R},9 {R},10 {R},12 {R},13 {R},14 {R},17 {S})-17-[(2 {S})-2-[(2 {S},3 {R},4 {S},5 {S},6 {R})-6-(hydroxymethyl)-3,4,5-tris(oxidanyl)oxan-2-yl]oxy-6-methyl-hept-5-en-2-yl]-4,4,8,10,14-pentamethyl-12-oxidanyl-2,3,5,6,7,9,11,12,13,15,16,17-dodecahydro-1 {H}-cyclopenta[a]phenanthren-3-yl]oxy]oxane-3,4,5-triol (three-letter code: VEI) (formula: C<sub>42</sub>H<sub>72</sub>O<sub>13</sub>) (labeled as "Ligand of Interest" by depositor).

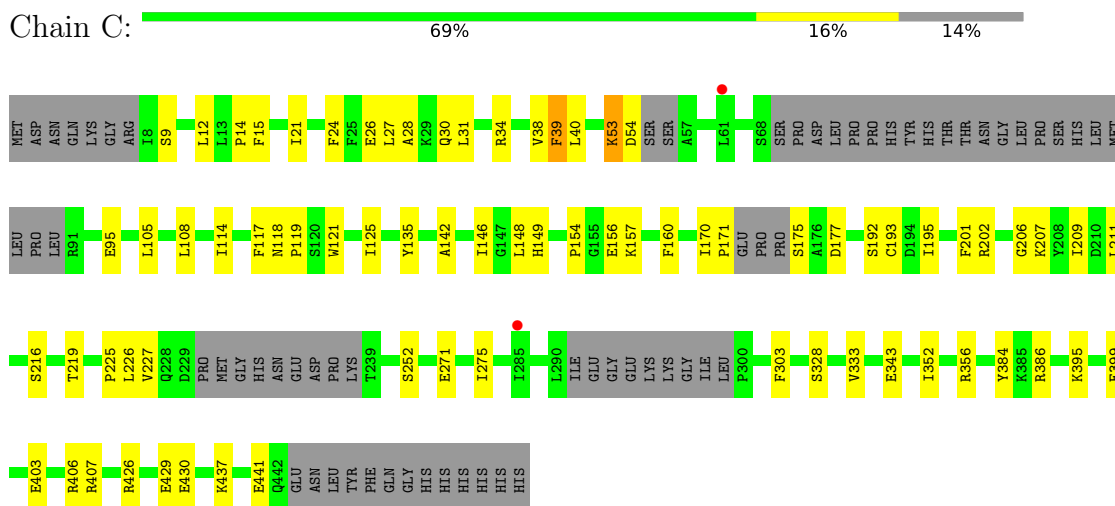


Mol	Chain	Residues	Atoms			ZeroOcc	AltConf
2	C	1	Total	C	O	0	0
			55	42	13		
2	A	1	Total	C	O	0	0
			55	42	13		

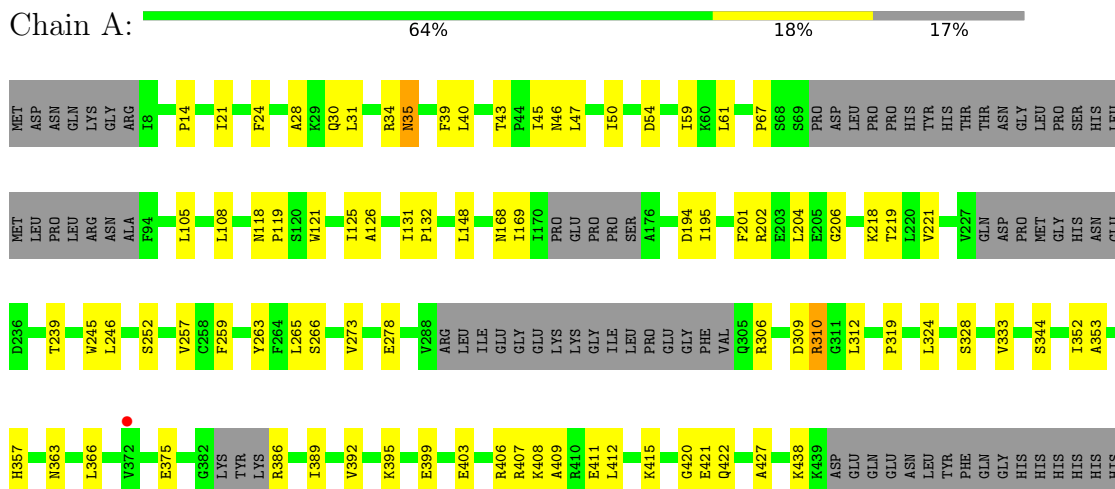
### 3 Residue-property plots [i](#)

These plots are drawn for all protein, RNA, DNA and oligosaccharide chains in the entry. The first graphic for a chain summarises the proportions of the various outlier classes displayed in the second graphic. The second graphic shows the sequence view annotated by issues in geometry and electron density. Residues are color-coded according to the number of geometric quality criteria for which they contain at least one outlier: green = 0, yellow = 1, orange = 2 and red = 3 or more. A red dot above a residue indicates a poor fit to the electron density ( $RSRZ > 2$ ). Stretches of 2 or more consecutive residues without any outlier are shown as a green connector. Residues present in the sample, but not in the model, are shown in grey.

- Molecule 1: Glycosyltransferase



- Molecule 1: Glycosyltransferase



## 4 Data and refinement statistics

Property	Value	Source
Space group	P 21 21 21	Depositor
Cell constants a, b, c, $\alpha$ , $\beta$ , $\gamma$	60.27Å 88.18Å 164.51Å 90.00° 90.00° 90.00°	Depositor
Resolution (Å)	37.27 – 3.36 37.27 – 3.36	Depositor EDS
% Data completeness (in resolution range)	99.9 (37.27-3.36) 99.8 (37.27-3.36)	Depositor EDS
$R_{merge}$	(Not available)	Depositor
$R_{sym}$	(Not available)	Depositor
$\langle I/\sigma(I) \rangle$ <sup>1</sup>	1.40 (at 3.33Å)	Xtrriage
Refinement program	PHENIX (1.19_4092: ???)	Depositor
R, $R_{free}$	0.296 , 0.332 0.296 , 0.331	Depositor DCC
$R_{free}$ test set	651 reflections (4.99%)	wwPDB-VP
Wilson B-factor (Å <sup>2</sup> )	127.5	Xtrriage
Anisotropy	0.246	Xtrriage
Bulk solvent $k_{sol}$ (e/Å <sup>3</sup> ), $B_{sol}$ (Å <sup>2</sup> )	0.27 , 72.4	EDS
L-test for twinning <sup>2</sup>	$\langle  L  \rangle = 0.48$ , $\langle L^2 \rangle = 0.31$	Xtrriage
Estimated twinning fraction	No twinning to report.	Xtrriage
$F_o, F_c$ correlation	0.91	EDS
Total number of atoms	6103	wwPDB-VP
Average B, all atoms (Å <sup>2</sup> )	137.0	wwPDB-VP

Xtrriage's analysis on translational NCS is as follows: *The largest off-origin peak in the Patterson function is 4.46% of the height of the origin peak. No significant pseudotranslation is detected.*

<sup>1</sup>Intensities estimated from amplitudes.

<sup>2</sup>Theoretical values of  $\langle |L| \rangle$ ,  $\langle L^2 \rangle$  for acentric reflections are 0.5, 0.333 respectively for untwinned datasets, and 0.375, 0.2 for perfectly twinned datasets.

## 5 Model quality [i](#)

### 5.1 Standard geometry [i](#)

Bond lengths and bond angles in the following residue types are not validated in this section: VEI

The Z score for a bond length (or angle) is the number of standard deviations the observed value is removed from the expected value. A bond length (or angle) with  $|Z| > 5$  is considered an outlier worth inspection. RMSZ is the root-mean-square of all Z scores of the bond lengths (or angles).

Mol	Chain	Bond lengths		Bond angles	
		RMSZ	# Z  >5	RMSZ	# Z  >5
1	A	0.33	0/2991	0.53	0/4040
1	C	0.29	0/3119	0.50	0/4211
All	All	0.31	0/6110	0.52	0/8251

There are no bond length outliers.

There are no bond angle outliers.

There are no chirality outliers.

There are no planarity outliers.

### 5.2 Too-close contacts [i](#)

In the following table, the Non-H and H(model) columns list the number of non-hydrogen atoms and hydrogen atoms in the chain respectively. The H(added) column lists the number of hydrogen atoms added and optimized by MolProbity. The Clashes column lists the number of clashes within the asymmetric unit, whereas Symm-Clashes lists symmetry-related clashes.

Mol	Chain	Non-H	H(model)	H(added)	Clashes	Symm-Clashes
1	A	2934	0	2953	66	1
1	C	3059	0	3074	45	1
2	A	55	0	0	0	0
2	C	55	0	0	0	0
All	All	6103	0	6027	111	1

The all-atom clashscore is defined as the number of clashes found per 1000 atoms (including hydrogen atoms). The all-atom clashscore for this structure is 9.

All (111) close contacts within the same asymmetric unit are listed below, sorted by their clash magnitude.

Atom-1	Atom-2	Interatomic distance (Å)	Clash overlap (Å)
1:A:61:LEU:CD2	1:A:108:LEU:HD21	1.77	1.13
1:A:61:LEU:HD21	1:A:108:LEU:CD2	1.86	1.05
1:A:61:LEU:HD22	1:A:108:LEU:HD11	1.44	0.98
1:A:40:LEU:HA	1:A:59:ILE:O	1.75	0.86
1:A:61:LEU:HD21	1:A:108:LEU:HD21	0.90	0.83
1:A:278:GLU:HA	1:A:310:ARG:HH12	1.51	0.75
1:A:273:VAL:HA	1:A:386:ARG:HH21	1.52	0.74
1:A:40:LEU:HB3	1:A:61:LEU:HD13	1.69	0.73
1:C:149:HIS:NE2	1:C:157:LYS:O	2.22	0.71
1:A:45:ILE:H	1:A:45:ILE:HD12	1.56	0.70
1:C:149:HIS:NE2	1:C:156:GLU:O	2.26	0.68
1:A:40:LEU:HD23	1:A:61:LEU:HD11	1.75	0.68
1:A:40:LEU:HD22	1:A:108:LEU:HD22	1.76	0.68
1:C:403:GLU:OE1	1:C:407:ARG:NH1	2.27	0.67
1:A:406:ARG:O	1:A:409:ALA:HB3	1.95	0.65
1:A:46:ASN:O	1:A:50:ILE:HG12	1.98	0.63
1:C:105:LEU:HD12	1:C:125:ILE:HG22	1.79	0.63
1:A:252:SER:H	1:A:328:SER:HA	1.65	0.62
1:A:30:GLN:O	1:A:34:ARG:NH1	2.32	0.61
1:C:192:SER:OG	1:C:195:ILE:O	2.19	0.61
1:C:30:GLN:O	1:C:34:ARG:NH1	2.33	0.60
1:C:252:SER:H	1:C:328:SER:HA	1.66	0.60
1:A:194:ASP:HA	1:A:218:LYS:HZ2	1.65	0.60
1:A:239:THR:HG22	1:A:319:PRO:HG3	1.84	0.59
1:C:148:LEU:HD21	1:C:216:SER:HB3	1.85	0.59
1:A:132:PRO:HB3	1:A:438:LYS:HG3	1.86	0.58
1:C:202:ARG:HG3	1:C:206:GLY:HA3	1.85	0.58
1:C:275:ILE:HG21	1:C:386:ARG:HD2	1.86	0.57
1:A:54:ASP:N	1:A:54:ASP:OD1	2.38	0.56
1:A:34:ARG:NH2	1:A:421:GLU:OE1	2.38	0.56
1:A:14:PRO:HB3	1:A:24:PHE:CG	2.42	0.55
1:A:168:ASN:OD1	1:A:169:ILE:N	2.40	0.55
1:A:263:TYR:CE2	1:A:265:LEU:HG	2.42	0.55
1:C:95:GLU:HA	1:C:121:TRP:HE1	1.73	0.54
1:C:54:ASP:N	1:C:54:ASP:OD1	2.39	0.54
1:A:61:LEU:CD2	1:A:108:LEU:HD11	2.29	0.54
1:A:353:ALA:HB3	1:A:375:GLU:HA	1.90	0.54
1:C:426:ARG:HA	1:C:429:GLU:HG2	1.90	0.53
1:C:399:GLU:O	1:C:406:ARG:NH1	2.42	0.53
1:C:40:LEU:HD13	1:C:108:LEU:HD13	1.90	0.53
1:C:333:VAL:HA	1:C:352:ILE:HB	1.91	0.52
1:A:194:ASP:H	1:A:218:LYS:HZ1	1.56	0.52

*Continued on next page...*



*Continued from previous page...*

Atom-1	Atom-2	Interatomic distance (Å)	Clash overlap (Å)
1:A:118:ASN:N	1:A:119:PRO:HD2	2.25	0.51
1:A:386:ARG:HB3	1:A:389:ILE:HD13	1.93	0.50
1:A:306:ARG:HB3	1:A:309:ASP:HB3	1.93	0.50
1:A:61:LEU:CD2	1:A:108:LEU:CD2	2.67	0.50
1:A:278:GLU:HA	1:A:310:ARG:NH1	2.24	0.49
1:C:31:LEU:HB2	1:C:39:PHE:CE1	2.48	0.49
1:A:118:ASN:H	1:A:119:PRO:HD2	1.77	0.49
1:A:257:VAL:HG13	1:A:333:VAL:HB	1.94	0.49
1:C:118:ASN:N	1:C:119:PRO:HD2	2.28	0.48
1:C:142:ALA:O	1:C:146:ILE:HG12	2.14	0.48
1:A:39:PHE:O	1:A:59:ILE:HB	2.13	0.48
1:A:35:ASN:O	1:A:35:ASN:ND2	2.44	0.48
1:A:273:VAL:HA	1:A:386:ARG:NH2	2.25	0.48
1:C:14:PRO:HB2	1:C:21:ILE:HD13	1.95	0.47
1:A:202:ARG:HG3	1:A:206:GLY:HA3	1.96	0.47
1:A:195:ILE:HG22	1:A:219:THR:HB	1.97	0.47
1:A:126:ALA:O	1:A:131:ILE:N	2.40	0.47
1:A:273:VAL:HA	1:A:386:ARG:HE	1.79	0.46
1:C:31:LEU:HB2	1:C:39:PHE:HE1	1.80	0.46
1:A:31:LEU:HD12	1:A:39:PHE:HZ	1.80	0.46
1:A:246:LEU:HG	1:A:328:SER:HB2	1.96	0.46
1:A:263:TYR:HB3	1:A:357:HIS:HE2	1.80	0.46
1:A:412:LEU:O	1:A:415:LYS:HB2	2.15	0.46
1:A:420:GLY:O	1:A:422:GLN:N	2.46	0.46
1:C:26:GLU:HB2	1:C:226:LEU:HB3	1.98	0.46
1:C:14:PRO:HB3	1:C:24:PHE:CG	2.51	0.45
1:A:61:LEU:HD22	1:A:108:LEU:CD1	2.29	0.45
1:C:271:GLU:O	1:C:275:ILE:HG12	2.16	0.45
1:C:53:LYS:HB2	1:C:54:ASP:H	1.58	0.45
1:A:403:GLU:O	1:A:407:ARG:N	2.44	0.44
1:C:227:VAL:HG22	1:C:343:GLU:HG2	1.97	0.44
1:A:333:VAL:HA	1:A:352:ILE:HB	1.98	0.44
1:A:21:ILE:HG13	1:A:47:LEU:HD22	1.99	0.44
1:C:195:ILE:HG21	1:C:430:GLU:HG2	2.00	0.44
1:A:105:LEU:HD12	1:A:125:ILE:HG22	1.99	0.44
1:C:27:LEU:O	1:C:31:LEU:HG	2.17	0.44
1:A:28:ALA:HA	1:A:39:PHE:CE2	2.53	0.43
1:A:324:LEU:HD13	1:A:344:SER:HA	2.00	0.43
1:C:118:ASN:H	1:C:119:PRO:HD2	1.84	0.43
1:C:170:ILE:HB	1:C:171:PRO:HD2	2.00	0.43
1:C:175:SER:C	1:C:177:ASP:N	2.71	0.43

*Continued on next page...*

Continued from previous page...

Atom-1	Atom-2	Interatomic distance (Å)	Clash overlap (Å)
1:A:246:LEU:HD12	1:A:246:LEU:HA	1.91	0.43
1:A:21:ILE:HD11	1:A:43:THR:HG21	2.00	0.43
1:A:119:PRO:O	1:A:121:TRP:N	2.44	0.43
1:C:395:LYS:HA	1:C:399:GLU:HB2	1.99	0.43
1:C:12:LEU:HD11	1:C:114:ILE:HD12	1.99	0.42
1:C:437:LYS:O	1:C:441:GLU:HG2	2.20	0.42
1:A:148:LEU:HD12	1:A:148:LEU:HA	1.90	0.42
1:A:245:TRP:CG	1:A:312:LEU:HD22	2.54	0.42
1:C:160:PHE:CD1	1:C:207:LYS:HD2	2.55	0.42
1:C:160:PHE:CE2	1:C:211:LEU:HD22	2.55	0.42
1:A:221:VAL:HG11	1:A:427:ALA:HA	2.00	0.42
1:C:195:ILE:HG22	1:C:219:THR:HB	2.01	0.42
1:A:395:LYS:NZ	1:A:399:GLU:HG3	2.34	0.42
1:A:363:ASN:O	1:A:366:LEU:HB3	2.20	0.42
1:A:386:ARG:HB2	1:A:386:ARG:NH1	2.35	0.42
1:A:194:ASP:HA	1:A:218:LYS:NZ	2.32	0.42
1:A:389:ILE:O	1:A:392:VAL:HG22	2.20	0.41
1:C:193:CYS:O	1:C:195:ILE:N	2.48	0.41
1:C:202:ARG:HH21	1:C:209:ILE:HG21	1.85	0.41
1:A:40:LEU:HD23	1:A:61:LEU:CD1	2.46	0.41
1:C:15:PHE:CD1	1:C:119:PRO:HD3	2.56	0.41
1:A:408:LYS:HA	1:A:411:GLU:HB2	2.01	0.41
1:C:9:SER:HA	1:C:38:VAL:O	2.21	0.41
1:C:28:ALA:HA	1:C:39:PHE:CZ	2.56	0.41
1:A:201:PHE:CE2	1:A:204:LEU:HB2	2.56	0.41
1:C:201:PHE:CD1	1:C:225:PRO:HD3	2.56	0.40
1:C:386:ARG:H	1:C:386:ARG:HG3	1.64	0.40
1:C:135:TYR:HB3	1:C:192:SER:HB2	2.03	0.40

All (1) symmetry-related close contacts are listed below. The label for Atom-2 includes the symmetry operator and encoded unit-cell translations to be applied.

Atom-1	Atom-2	Interatomic distance (Å)	Clash overlap (Å)
1:C:154:PRO:CG	1:A:67:PRO:CD[3_654]	1.91	0.29

## 5.3 Torsion angles [i](#)

### 5.3.1 Protein backbone [i](#)

In the following table, the Percentiles column shows the percent Ramachandran outliers of the chain as a percentile score with respect to all X-ray entries followed by that with respect to entries of similar resolution.

The Analysed column shows the number of residues for which the backbone conformation was analysed, and the total number of residues.

Mol	Chain	Analysed	Favoured	Allowed	Outliers	Percentiles	
1	A	364/455 (80%)	326 (90%)	38 (10%)	0	100	100
1	C	378/455 (83%)	343 (91%)	35 (9%)	0	100	100
All	All	742/910 (82%)	669 (90%)	73 (10%)	0	100	100

There are no Ramachandran outliers to report.

### 5.3.2 Protein sidechains [i](#)

In the following table, the Percentiles column shows the percent sidechain outliers of the chain as a percentile score with respect to all X-ray entries followed by that with respect to entries of similar resolution.

The Analysed column shows the number of residues for which the sidechain conformation was analysed, and the total number of residues.

Mol	Chain	Analysed	Rotameric	Outliers	Percentiles	
1	A	325/396 (82%)	321 (99%)	4 (1%)	67	80
1	C	337/396 (85%)	331 (98%)	6 (2%)	54	73
All	All	662/792 (84%)	652 (98%)	10 (2%)	60	76

All (10) residues with a non-rotameric sidechain are listed below:

Mol	Chain	Res	Type
1	C	39	PHE
1	C	53	LYS
1	C	117	PHE
1	C	303	PHE
1	C	356	ARG
1	C	384	TYR
1	A	35	ASN
1	A	259	PHE

*Continued on next page...*

*Continued from previous page...*

Mol	Chain	Res	Type
1	A	266	SER
1	A	310	ARG

Sometimes sidechains can be flipped to improve hydrogen bonding and reduce clashes. There are no such sidechains identified.

### 5.3.3 RNA [i](#)

There are no RNA molecules in this entry.

### 5.4 Non-standard residues in protein, DNA, RNA chains [i](#)

There are no non-standard protein/DNA/RNA residues in this entry.

### 5.5 Carbohydrates [i](#)

There are no oligosaccharides in this entry.

### 5.6 Ligand geometry [i](#)

2 ligands are modelled in this entry.

In the following table, the Counts columns list the number of bonds (or angles) for which Mogul statistics could be retrieved, the number of bonds (or angles) that are observed in the model and the number of bonds (or angles) that are defined in the Chemical Component Dictionary. The Link column lists molecule types, if any, to which the group is linked. The Z score for a bond length (or angle) is the number of standard deviations the observed value is removed from the expected value. A bond length (or angle) with  $|Z| > 2$  is considered an outlier worth inspection. RMSZ is the root-mean-square of all Z scores of the bond lengths (or angles).

Mol	Type	Chain	Res	Link	Bond lengths			Bond angles		
					Counts	RMSZ	# Z  > 2	Counts	RMSZ	# Z  > 2
2	VEI	A	501	-	60,60,60	2.44	24 (40%)	91,97,97	1.99	25 (27%)
2	VEI	C	501	-	60,60,60	2.36	22 (36%)	91,97,97	1.88	20 (21%)

In the following table, the Chirals column lists the number of chiral outliers, the number of chiral centers analysed, the number of these observed in the model and the number defined in the Chemical Component Dictionary. Similar counts are reported in the Torsion and Rings columns. '-' means no outliers of that kind were identified.

Mol	Type	Chain	Res	Link	Chirals	Torsions	Rings
2	VEI	A	501	-	-	7/26/141/141	0/6/6/6
2	VEI	C	501	-	-	4/26/141/141	0/6/6/6

All (46) bond length outliers are listed below:

Mol	Chain	Res	Type	Atoms	Z	Observed(Å)	Ideal(Å)
2	C	501	VEI	C24-C19	6.19	1.66	1.56
2	A	501	VEI	C24-C19	6.17	1.66	1.56
2	A	501	VEI	C16-C15	6.15	1.66	1.56
2	C	501	VEI	C16-C15	5.84	1.65	1.56
2	C	501	VEI	C20-C15	5.39	1.65	1.56
2	C	501	VEI	C12-C13	5.35	1.63	1.53
2	A	501	VEI	C20-C15	5.22	1.64	1.56
2	A	501	VEI	C12-C13	4.70	1.61	1.53
2	A	501	VEI	C06-C08	4.33	1.60	1.54
2	C	501	VEI	C14-C13	4.12	1.59	1.52
2	A	501	VEI	C14-C13	4.06	1.59	1.52
2	C	501	VEI	C06-C08	3.74	1.59	1.54
2	A	501	VEI	C05-C06	3.69	1.61	1.52
2	A	501	VEI	O53-C46	-3.65	1.34	1.43
2	A	501	VEI	O52-C47	-3.62	1.34	1.43
2	C	501	VEI	O52-C47	-3.49	1.34	1.43
2	C	501	VEI	O53-C46	-3.41	1.35	1.43
2	C	501	VEI	O54-C45	-3.30	1.35	1.43
2	A	501	VEI	O54-C45	-3.30	1.35	1.43
2	C	501	VEI	C24-C23	3.27	1.61	1.54
2	A	501	VEI	C24-C23	3.23	1.61	1.54
2	C	501	VEI	C05-C06	3.18	1.60	1.52
2	A	501	VEI	C12-C08	3.18	1.61	1.55
2	A	501	VEI	O36-C31	-3.17	1.35	1.43
2	C	501	VEI	O36-C31	-3.15	1.35	1.43
2	C	501	VEI	C12-C08	3.05	1.61	1.55
2	A	501	VEI	O38-C29	-3.01	1.35	1.43
2	A	501	VEI	C22-C23	2.96	1.57	1.51
2	A	501	VEI	C18-C19	2.94	1.58	1.53
2	C	501	VEI	O38-C29	-2.94	1.36	1.43
2	C	501	VEI	O43-C06	-2.78	1.43	1.47
2	A	501	VEI	O37-C30	-2.71	1.36	1.43
2	A	501	VEI	O49-C48	-2.70	1.37	1.44
2	A	501	VEI	C11-C12	2.68	1.60	1.55
2	C	501	VEI	O49-C48	-2.65	1.37	1.44
2	A	501	VEI	C17-C18	2.60	1.58	1.53
2	C	501	VEI	O37-C30	-2.58	1.36	1.43

*Continued on next page...*

Continued from previous page...

Mol	Chain	Res	Type	Atoms	Z	Observed(Å)	Ideal(Å)
2	C	501	VEI	C18-C19	2.47	1.57	1.53
2	A	501	VEI	C17-C16	2.41	1.58	1.54
2	C	501	VEI	O49-C44	-2.40	1.35	1.41
2	C	501	VEI	C46-C45	2.22	1.58	1.52
2	A	501	VEI	C34-C32	2.21	1.59	1.51
2	A	501	VEI	C09-C08	2.12	1.58	1.54
2	C	501	VEI	C11-C12	2.10	1.59	1.55
2	C	501	VEI	C34-C32	2.05	1.58	1.51
2	A	501	VEI	O43-C06	-2.03	1.44	1.47

All (45) bond angle outliers are listed below:

Mol	Chain	Res	Type	Atoms	Z	Observed(°)	Ideal(°)
2	A	501	VEI	O27-C23-C24	5.80	116.03	109.00
2	A	501	VEI	C18-C19-C24	5.47	120.71	114.11
2	C	501	VEI	O27-C23-C24	5.26	115.38	109.00
2	C	501	VEI	C28-O33-C32	5.20	123.89	113.69
2	A	501	VEI	C28-O33-C32	5.10	123.71	113.69
2	C	501	VEI	C06-C08-C12	-4.42	110.34	118.03
2	C	501	VEI	C18-C19-C24	4.39	119.40	114.11
2	C	501	VEI	C28-O27-C23	4.37	122.05	115.08
2	A	501	VEI	C05-C04-C03	4.27	122.68	112.41
2	C	501	VEI	C10-C11-C16	4.17	121.23	116.86
2	A	501	VEI	C40-C16-C11	-4.13	104.72	110.85
2	C	501	VEI	C05-C04-C03	4.01	122.07	112.41
2	A	501	VEI	C10-C11-C16	3.91	120.95	116.86
2	A	501	VEI	O33-C32-C34	3.80	115.89	106.44
2	C	501	VEI	O33-C32-C34	3.68	115.58	106.44
2	A	501	VEI	C46-C47-C48	-3.62	103.78	110.24
2	C	501	VEI	C42-C11-C16	-3.53	109.02	112.27
2	A	501	VEI	C11-C12-C08	-3.45	100.97	104.35
2	C	501	VEI	C40-C16-C11	-3.43	105.77	110.85
2	A	501	VEI	C42-C11-C16	-3.43	109.11	112.27
2	C	501	VEI	C19-C24-C23	3.39	112.81	106.84
2	A	501	VEI	O43-C44-C45	3.34	118.10	108.29
2	A	501	VEI	C28-O27-C23	3.06	119.96	115.08
2	A	501	VEI	C06-C08-C12	-3.03	112.76	118.03
2	C	501	VEI	C11-C12-C08	-2.99	101.42	104.35
2	C	501	VEI	C22-C23-C24	-2.95	110.06	114.39
2	A	501	VEI	C09-C08-C06	-2.82	108.47	112.14
2	A	501	VEI	O27-C23-C22	2.77	112.69	109.71
2	C	501	VEI	O43-C44-C45	2.77	116.43	108.29

Continued on next page...

Continued from previous page...

Mol	Chain	Res	Type	Atoms	Z	Observed(°)	Ideal(°)
2	A	501	VEI	C44-O49-C48	2.69	118.97	113.69
2	A	501	VEI	C21-C22-C23	2.59	115.61	110.63
2	C	501	VEI	C44-O49-C48	2.55	118.69	113.69
2	A	501	VEI	C22-C21-C20	2.37	116.85	112.78
2	A	501	VEI	C47-C46-C45	-2.35	106.71	110.82
2	A	501	VEI	O53-C46-C47	2.29	115.63	110.35
2	C	501	VEI	O54-C45-C46	2.26	115.58	110.35
2	C	501	VEI	C34-C32-C31	-2.21	107.83	113.00
2	A	501	VEI	O27-C28-C29	2.18	113.75	108.10
2	A	501	VEI	O41-C13-C14	-2.11	104.71	109.94
2	A	501	VEI	C34-C32-C31	-2.09	108.10	113.00
2	C	501	VEI	C09-C08-C06	-2.08	109.43	112.14
2	A	501	VEI	C18-C17-C16	2.07	116.40	112.84
2	A	501	VEI	O49-C48-C50	2.05	111.52	106.44
2	C	501	VEI	O41-C13-C14	-2.04	104.88	109.94
2	C	501	VEI	C22-C21-C20	2.00	116.22	112.78

There are no chirality outliers.

All (11) torsion outliers are listed below:

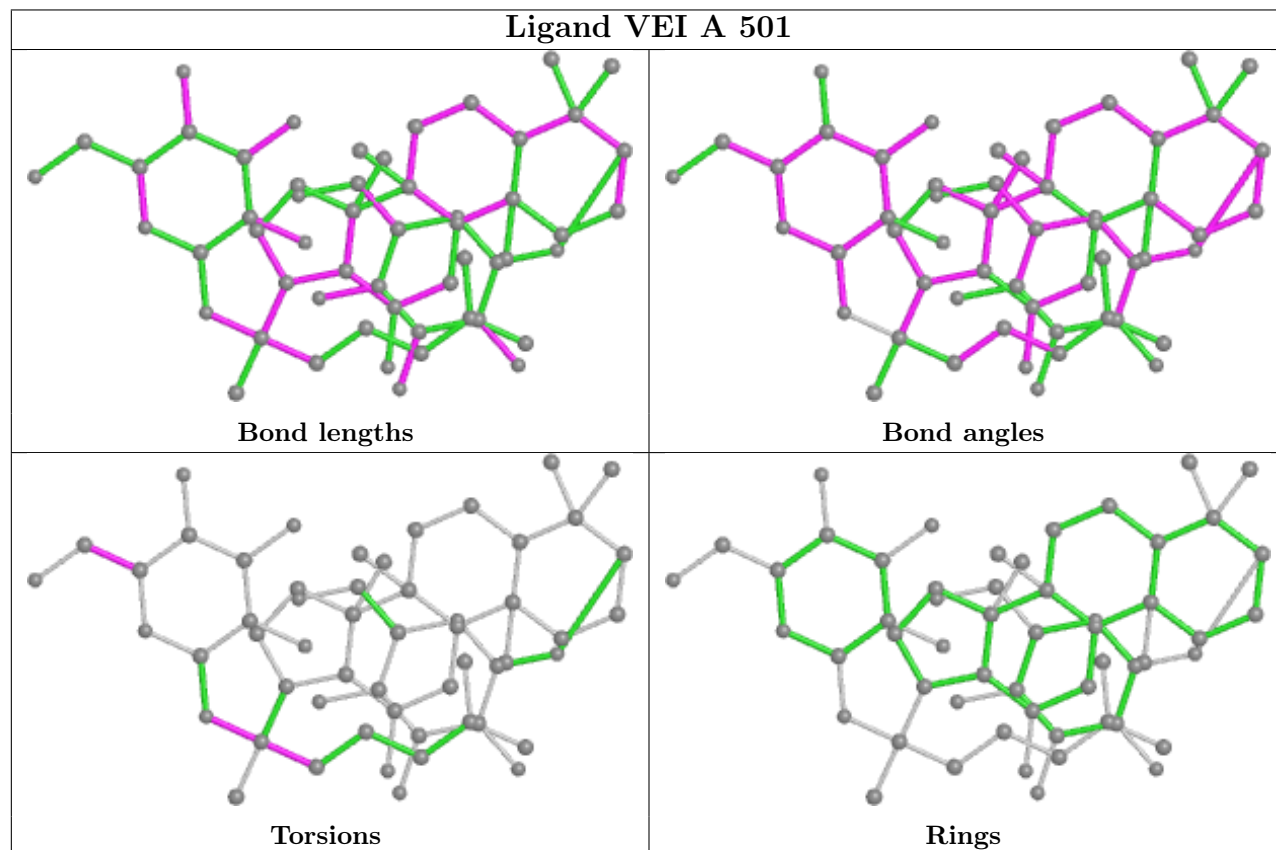
Mol	Chain	Res	Type	Atoms
2	C	501	VEI	C04-C05-C06-O43
2	A	501	VEI	C04-C05-C06-C08
2	A	501	VEI	C04-C05-C06-O43
2	A	501	VEI	C05-C06-O43-C44
2	A	501	VEI	O49-C48-C50-O51
2	A	501	VEI	C47-C48-C50-O51
2	C	501	VEI	O49-C48-C50-O51
2	C	501	VEI	C04-C05-C06-C08
2	C	501	VEI	C04-C05-C06-C07
2	A	501	VEI	C07-C06-O43-C44
2	A	501	VEI	C04-C05-C06-C07

There are no ring outliers.

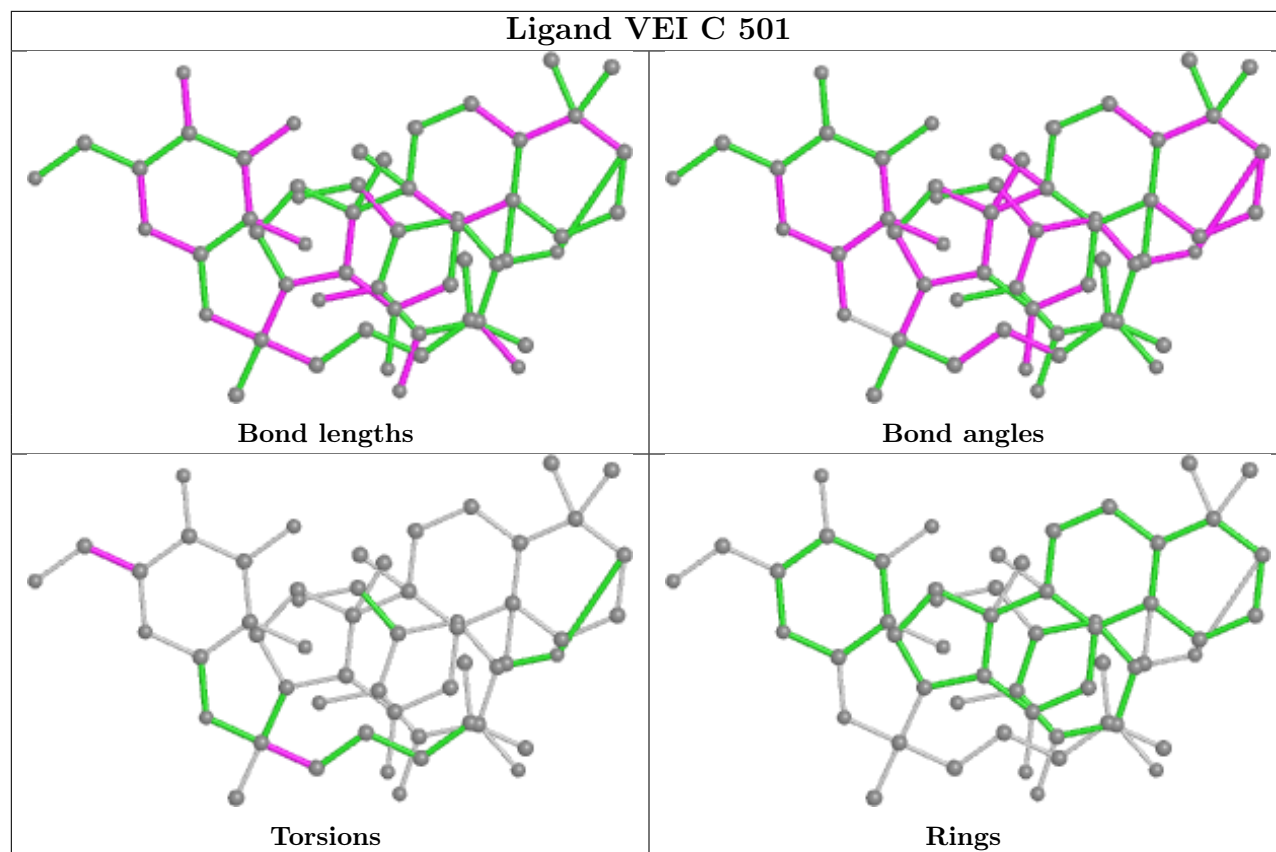
No monomer is involved in short contacts.

The following is a two-dimensional graphical depiction of Mogul quality analysis of bond lengths, bond angles, torsion angles, and ring geometry for all instances of the Ligand of Interest. In addition, ligands with molecular weight > 250 and outliers as shown on the validation Tables will also be included. For torsion angles, if less than 5% of the Mogul distribution of torsion angles is within 10 degrees of the torsion angle in question, then that torsion angle is considered an outlier. Any bond that is central to one or more torsion angles identified as an outlier by Mogul will be

highlighted in the graph. For rings, the root-mean-square deviation (RMSD) between the ring in question and similar rings identified by Mogul is calculated over all ring torsion angles. If the average RMSD is greater than 60 degrees and the minimal RMSD between the ring in question and any Mogul-identified rings is also greater than 60 degrees, then that ring is considered an outlier. The outliers are highlighted in purple. The color gray indicates Mogul did not find sufficient equivalents in the CSD to analyse the geometry.







## 5.7 Other polymers [i](#)

There are no such residues in this entry.

## 5.8 Polymer linkage issues [i](#)

There are no chain breaks in this entry.

## 6 Fit of model and data [i](#)

### 6.1 Protein, DNA and RNA chains [i](#)

In the following table, the column labelled ‘#RSRZ > 2’ contains the number (and percentage) of RSRZ outliers, followed by percent RSRZ outliers for the chain as percentile scores relative to all X-ray entries and entries of similar resolution. The OWAB column contains the minimum, median, 95<sup>th</sup> percentile and maximum values of the occupancy-weighted average B-factor per residue. The column labelled ‘Q < 0.9’ lists the number of (and percentage) of residues with an average occupancy less than 0.9.

Mol	Chain	Analysed	<RSRZ>	#RSRZ>2	OWAB(Å <sup>2</sup> )	Q<0.9
1	A	376/455 (82%)	-0.24	1 (0%) 90 89	87, 144, 202, 230	0
1	C	390/455 (85%)	-0.29	2 (0%) 87 83	76, 124, 176, 211	0
All	All	766/910 (84%)	-0.27	3 (0%) 89 86	76, 134, 195, 230	0

All (3) RSRZ outliers are listed below:

Mol	Chain	Res	Type	RSRZ
1	A	372	VAL	3.4
1	C	61	LEU	2.3
1	C	285	ILE	2.1

### 6.2 Non-standard residues in protein, DNA, RNA chains [i](#)

There are no non-standard protein/DNA/RNA residues in this entry.

### 6.3 Carbohydrates [i](#)

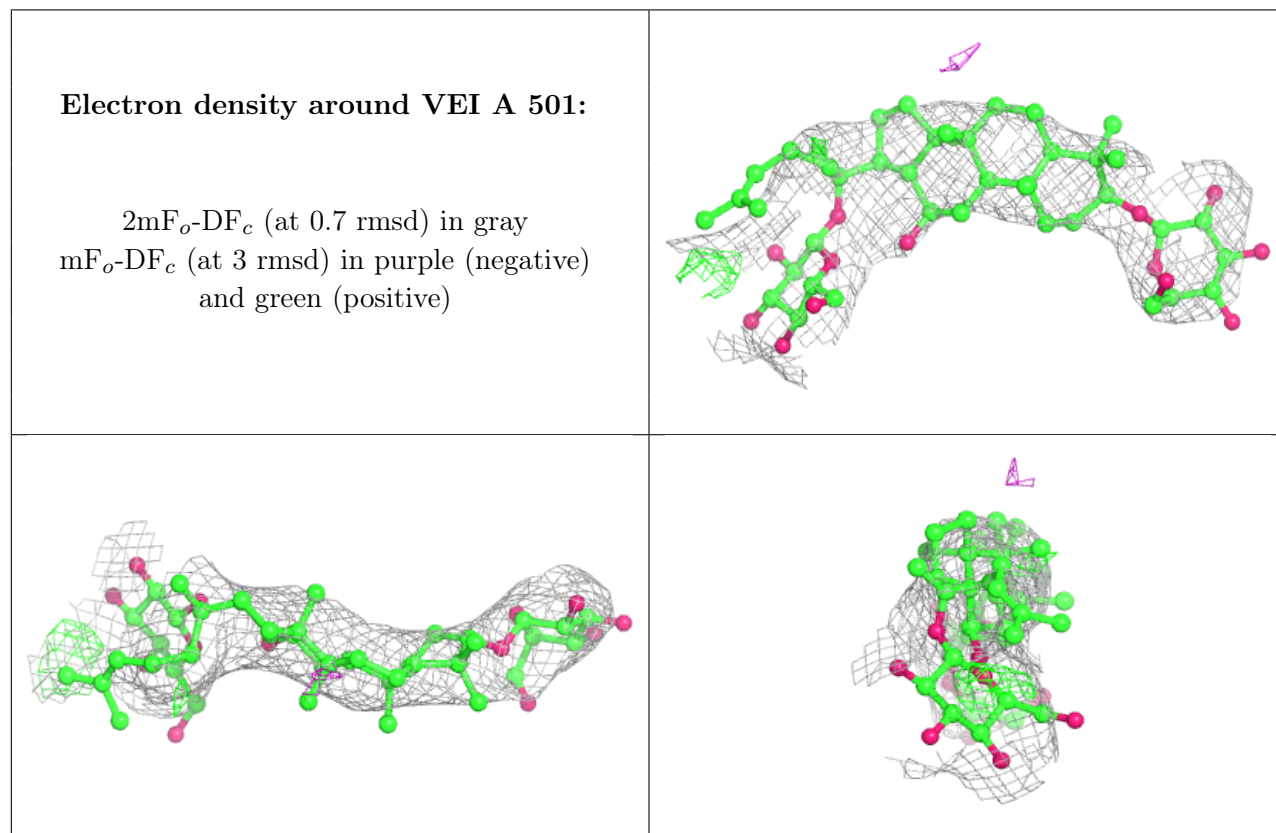
There are no monosaccharides in this entry.

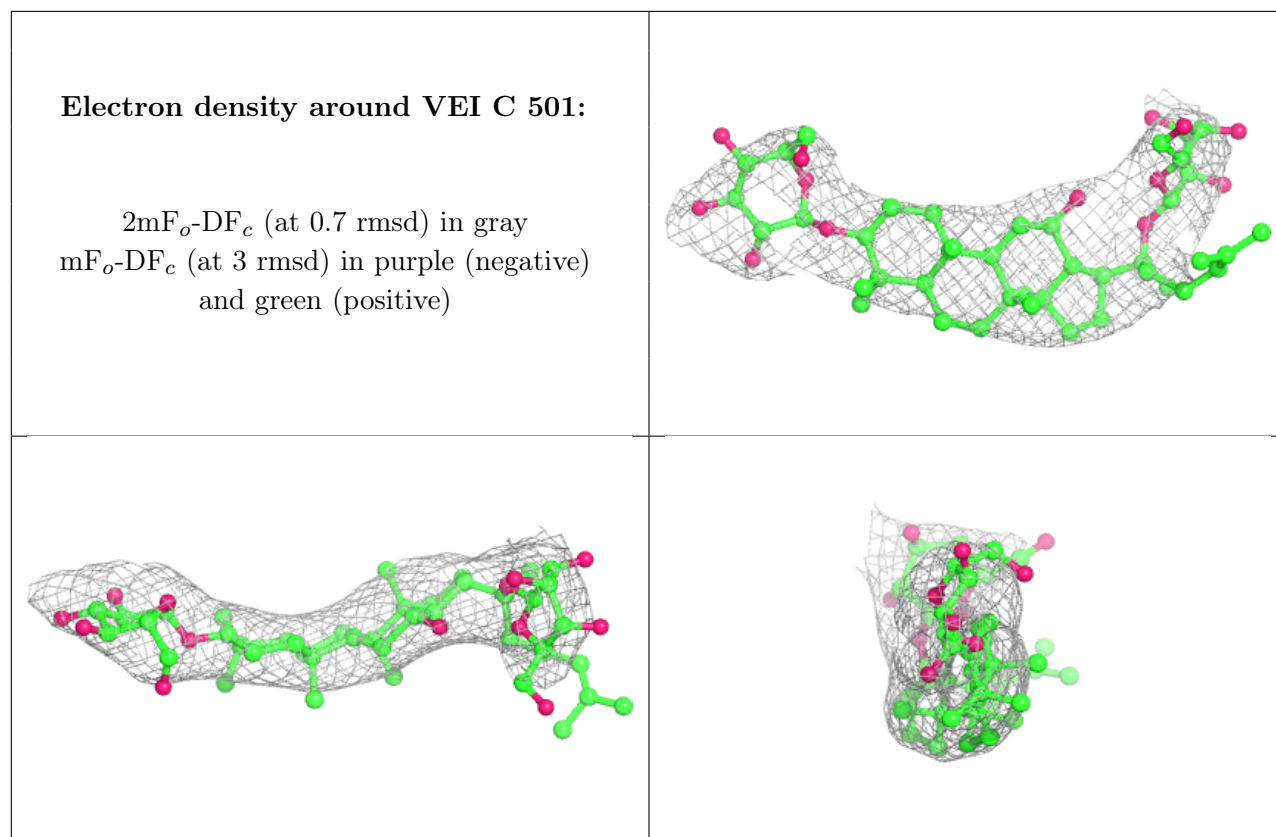
### 6.4 Ligands [i](#)

In the following table, the Atoms column lists the number of modelled atoms in the group and the number defined in the chemical component dictionary. The B-factors column lists the minimum, median, 95<sup>th</sup> percentile and maximum values of B factors of atoms in the group. The column labelled ‘Q < 0.9’ lists the number of atoms with occupancy less than 0.9.

Mol	Type	Chain	Res	Atoms	RSCC	RSR	B-factors(Å <sup>2</sup> )	Q<0.9
2	VEI	A	501	55/55	0.84	0.13	112,129,147,158	0
2	VEI	C	501	55/55	0.91	0.09	69,96,134,143	0

The following is a graphical depiction of the model fit to experimental electron density of all instances of the Ligand of Interest. In addition, ligands with molecular weight > 250 and outliers as shown on the geometry validation Tables will also be included. Each fit is shown from different orientation to approximate a three-dimensional view.





## 6.5 Other polymers [i](#)

There are no such residues in this entry.