



# Full wwPDB X-ray Structure Validation Report ⓘ

Jul 8, 2024 – 02:32 PM JST

PDB ID : 8K1Y  
Title : Crystal structure of human serum albumin and ruthenium Val complex adduct  
Authors : Gong, W.J.; Xie, L.L.; Wang, W.M.; Wang, H.F.  
Deposited on : 2023-07-11  
Resolution : 2.15 Å(reported)

This is a Full wwPDB X-ray Structure Validation Report for a publicly released PDB entry.

We welcome your comments at [validation@mail.wwpdb.org](mailto:validation@mail.wwpdb.org)

A user guide is available at

<https://www.wwpdb.org/validation/2017/XrayValidationReportHelp>

with specific help available everywhere you see the ⓘ symbol.

The types of validation reports are described at

<http://www.wwpdb.org/validation/2017/FAQs#types>.

---

The following versions of software and data (see [references ⓘ](#)) were used in the production of this report:

MolProbity : 4.02b-467  
Mogul : 1.8.5 (274361), CSD as541be (2020)  
Xtriage (Phenix) : 1.13  
EDS : 2.37.1  
buster-report : 1.1.7 (2018)  
Percentile statistics : 20191225.v01 (using entries in the PDB archive December 25th 2019)  
Refmac : 5.8.0158  
CCP4 : 7.0.044 (Gargrove)  
Ideal geometry (proteins) : Engh & Huber (2001)  
Ideal geometry (DNA, RNA) : Parkinson et al. (1996)  
Validation Pipeline (wwPDB-VP) : 2.37.1

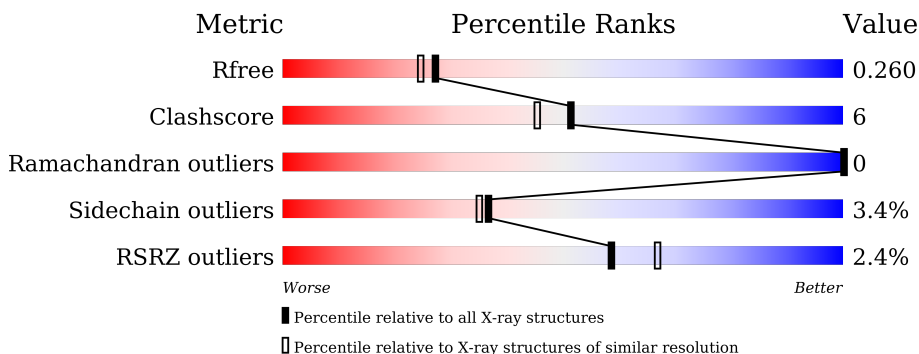
# 1 Overall quality at a glance

The following experimental techniques were used to determine the structure:

*X-RAY DIFFRACTION*

The reported resolution of this entry is 2.15 Å.

Percentile scores (ranging between 0-100) for global validation metrics of the entry are shown in the following graphic. The table shows the number of entries on which the scores are based.



Metric	Whole archive (#Entries)	Similar resolution (#Entries, resolution range(Å))
$R_{free}$	130704	1479 (2.16-2.16)
Clashscore	141614	1585 (2.16-2.16)
Ramachandran outliers	138981	1560 (2.16-2.16)
Sidechain outliers	138945	1559 (2.16-2.16)
RSRZ outliers	127900	1456 (2.16-2.16)

The table below summarises the geometric issues observed across the polymeric chains and their fit to the electron density. The red, orange, yellow and green segments of the lower bar indicate the fraction of residues that contain outliers for  $\geq 3$ , 2, 1 and 0 types of geometric quality criteria respectively. A grey segment represents the fraction of residues that are not modelled. The numeric value for each fraction is indicated below the corresponding segment, with a dot representing fractions  $\leq 5\%$ . The upper red bar (where present) indicates the fraction of residues that have poor fit to the electron density. The numeric value is given above the bar.

Mol	Chain	Length	Quality of chain
1	A	585	 2% 86% 12% ..

## 2 Entry composition [i](#)

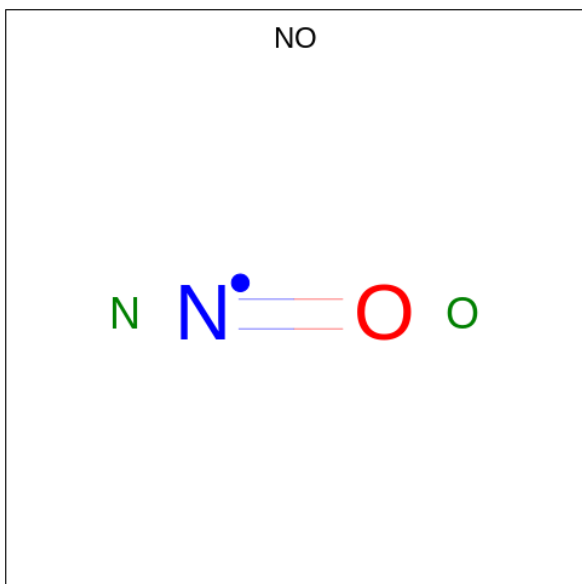
There are 9 unique types of molecules in this entry. The entry contains 4894 atoms, of which 0 are hydrogens and 0 are deuteriums.

In the tables below, the ZeroOcc column contains the number of atoms modelled with zero occupancy, the AltConf column contains the number of residues with at least one atom in alternate conformation and the Trace column contains the number of residues modelled with at most 2 atoms.

- Molecule 1 is a protein called Albumin.

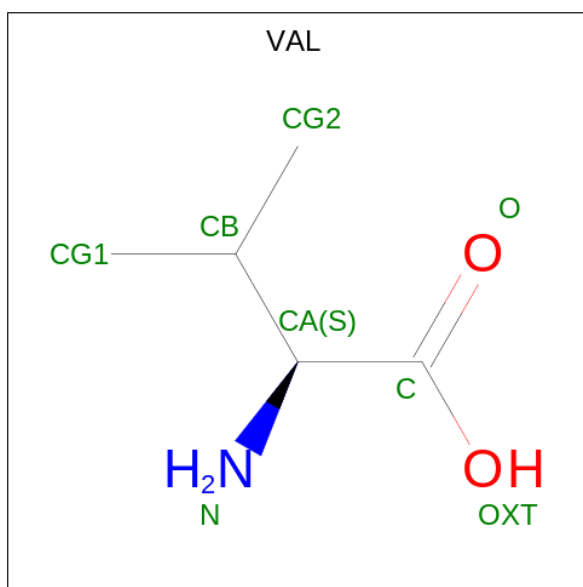
Mol	Chain	Residues	Atoms					ZeroOcc	AltConf	Trace
			Total	C	N	O	S			
1	A	581	4606	2909	776	880	41	0	0	0

- Molecule 2 is NITRIC OXIDE (three-letter code: NO) (formula: NO).



Mol	Chain	Residues	Atoms			ZeroOcc	AltConf
			Total	N	O		
2	A	1	2	1	1	0	0

- Molecule 3 is VALINE (three-letter code: VAL) (formula: C<sub>5</sub>H<sub>11</sub>NO<sub>2</sub>) (labeled as "Ligand of Interest" by depositor).



Mol	Chain	Residues	Atoms				ZeroOcc	AltConf
			Total	C	N	O		
3	A	1	8	5	1	2	0	0

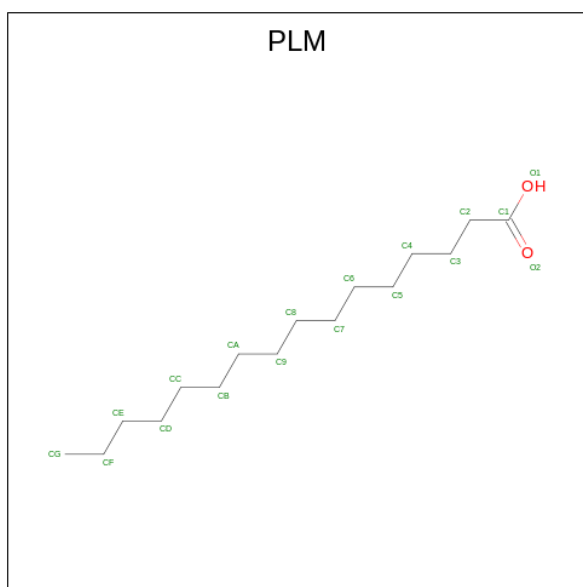
- Molecule 4 is CHLORIDE ION (three-letter code: CL) (formula: Cl).

Mol	Chain	Residues	Atoms		ZeroOcc	AltConf
			Total	Cl		
4	A	1	1	1	0	0

- Molecule 5 is RUTHENIUM ION (three-letter code: RU) (formula: Ru).

Mol	Chain	Residues	Atoms		ZeroOcc	AltConf
			Total	Ru		
5	A	1	1	1	0	0

- Molecule 6 is PALMITIC ACID (three-letter code: PLM) (formula: C<sub>16</sub>H<sub>32</sub>O<sub>2</sub>).



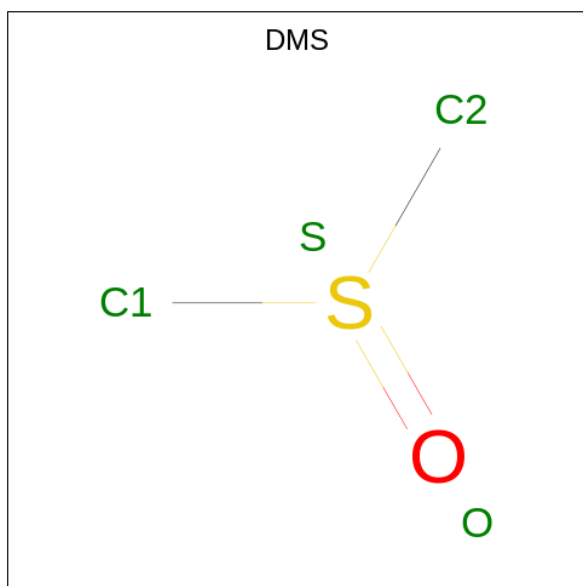
Mol	Chain	Residues	Atoms		ZeroOcc	AltConf
6	A	1	Total	C O	0	0
			18	16 2		
6	A	1	Total	C O	0	0
			18	16 2		
6	A	1	Total	C O	0	0
			18	16 2		
6	A	1	Total	C O	0	0
			18	16 2		
6	A	1	Total	C O	0	0
			18	16 2		

- Molecule 7 is GLYCEROL (three-letter code: GOL) (formula: C<sub>3</sub>H<sub>8</sub>O<sub>3</sub>).



Mol	Chain	Residues	Atoms			ZeroOcc	AltConf
7	A	1	Total	C	O	0	0
			6	3	3		
7	A	1	Total	C	O	0	0
			6	3	3		

- Molecule 8 is DIMETHYL SULFOXIDE (three-letter code: DMS) (formula:  $C_2H_6OS$ ).



Mol	Chain	Residues	Atoms				ZeroOcc	AltConf
8	A	1	Total	C	O	S	0	0
			4	2	1	1		
8	A	1	Total	C	O	S	0	0
			4	2	1	1		

*Continued on next page...*

*Continued from previous page...*

Mol	Chain	Residues	Atoms				ZeroOcc	AltConf
8	A	1	Total	C	O	S	0	0
			4	2	1	1		
8	A	1	Total	C	O	S	0	0
			4	2	1	1		

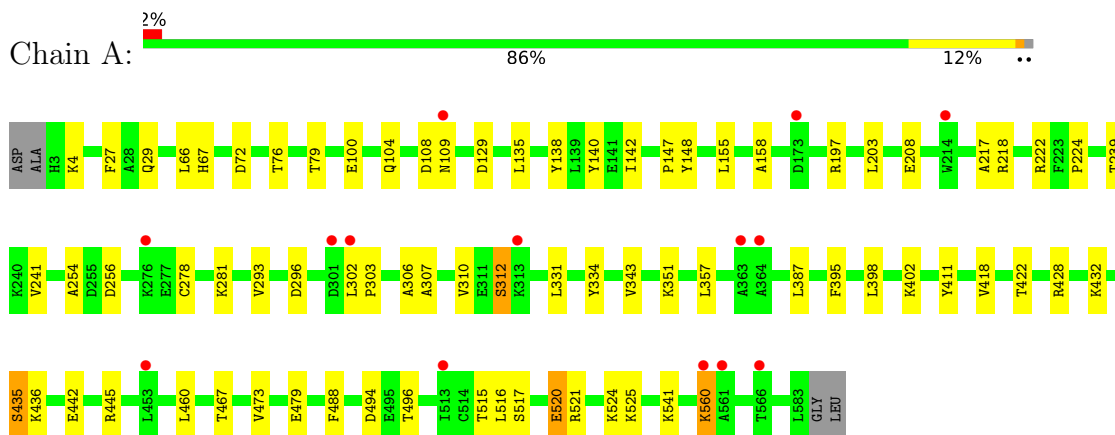
- Molecule 9 is water.

Mol	Chain	Residues	Atoms		ZeroOcc	AltConf
9	A	140	Total	O	0	0
			140	140		

### 3 Residue-property plots [i](#)

These plots are drawn for all protein, RNA, DNA and oligosaccharide chains in the entry. The first graphic for a chain summarises the proportions of the various outlier classes displayed in the second graphic. The second graphic shows the sequence view annotated by issues in geometry and electron density. Residues are color-coded according to the number of geometric quality criteria for which they contain at least one outlier: green = 0, yellow = 1, orange = 2 and red = 3 or more. A red dot above a residue indicates a poor fit to the electron density ( $RSRZ > 2$ ). Stretches of 2 or more consecutive residues without any outlier are shown as a green connector. Residues present in the sample, but not in the model, are shown in grey.

- Molecule 1: Albumin





## 4 Data and refinement statistics

Property	Value	Source
Space group	C 1 2 1	Depositor
Cell constants a, b, c, $\alpha$ , $\beta$ , $\gamma$	185.00Å 38.42Å 95.78Å 90.00° 105.18° 90.00°	Depositor
Resolution (Å)	34.15 – 2.15 34.15 – 2.15	Depositor EDS
% Data completeness (in resolution range)	98.4 (34.15-2.15) 98.4 (34.15-2.15)	Depositor EDS
$R_{merge}$	0.09	Depositor
$R_{sym}$	(Not available)	Depositor
$\langle I/\sigma(I) \rangle$ <sup>1</sup>	1.99 (at 2.16Å)	Xtrriage
Refinement program	PHENIX (1.19.2_4158: ???)	Depositor
R, $R_{free}$	0.225 , 0.269 0.226 , 0.260	Depositor DCC
$R_{free}$ test set	1804 reflections (5.09%)	wwPDB-VP
Wilson B-factor (Å <sup>2</sup> )	44.4	Xtrriage
Anisotropy	0.589	Xtrriage
Bulk solvent $k_{sol}$ (e/Å <sup>3</sup> ), $B_{sol}$ (Å <sup>2</sup> )	0.32 , 42.4	EDS
L-test for twinning <sup>2</sup>	$\langle  L  \rangle = 0.50$ , $\langle L^2 \rangle = 0.33$	Xtrriage
Estimated twinning fraction	No twinning to report.	Xtrriage
$F_o, F_c$ correlation	0.95	EDS
Total number of atoms	4894	wwPDB-VP
Average B, all atoms (Å <sup>2</sup> )	51.0	wwPDB-VP

Xtrriage's analysis on translational NCS is as follows: *The largest off-origin peak in the Patterson function is 5.83% of the height of the origin peak. No significant pseudotranslation is detected.*

<sup>1</sup>Intensities estimated from amplitudes.

<sup>2</sup>Theoretical values of  $\langle |L| \rangle$ ,  $\langle L^2 \rangle$  for acentric reflections are 0.5, 0.333 respectively for untwinned datasets, and 0.375, 0.2 for perfectly twinned datasets.

## 5 Model quality [i](#)

### 5.1 Standard geometry [i](#)

Bond lengths and bond angles in the following residue types are not validated in this section: PLM, RU, CL, DMS, NO, GOL

The Z score for a bond length (or angle) is the number of standard deviations the observed value is removed from the expected value. A bond length (or angle) with  $|Z| > 5$  is considered an outlier worth inspection. RMSZ is the root-mean-square of all Z scores of the bond lengths (or angles).

Mol	Chain	Bond lengths		Bond angles	
		RMSZ	# Z  >5	RMSZ	# Z  >5
1	A	0.33	0/4696	0.50	0/6339

There are no bond length outliers.

There are no bond angle outliers.

There are no chirality outliers.

There are no planarity outliers.

### 5.2 Too-close contacts [i](#)

In the following table, the Non-H and H(model) columns list the number of non-hydrogen atoms and hydrogen atoms in the chain respectively. The H(added) column lists the number of hydrogen atoms added and optimized by MolProbity. The Clashes column lists the number of clashes within the asymmetric unit, whereas Symm-Clashes lists symmetry-related clashes.

Mol	Chain	Non-H	H(model)	H(added)	Clashes	Symm-Clashes
1	A	4606	0	4502	50	0
2	A	2	0	0	0	0
3	A	8	0	8	0	0
4	A	1	0	0	0	0
5	A	1	0	0	0	0
6	A	108	0	186	12	0
7	A	12	0	16	2	0
8	A	16	0	24	4	0
9	A	140	0	0	11	0
All	All	4894	0	4736	53	0

The all-atom clashscore is defined as the number of clashes found per 1000 atoms (including hydrogen atoms). The all-atom clashscore for this structure is 6.

All (53) close contacts within the same asymmetric unit are listed below, sorted by their clash magnitude.

Atom-1	Atom-2	Interatomic distance (Å)	Clash overlap (Å)
1:A:293:VAL:HG12	9:A:769:HOH:O	1.72	0.90
8:A:616:DMS:S	9:A:816:HOH:O	2.30	0.89
7:A:612:GOL:H12	9:A:794:HOH:O	1.75	0.85
1:A:293:VAL:CG1	9:A:769:HOH:O	2.26	0.80
1:A:66:LEU:H	8:A:616:DMS:H13	1.48	0.77
1:A:418:VAL:HG21	6:A:608:PLM:HB1	1.71	0.71
1:A:524:LYS:HE2	9:A:823:HOH:O	1.93	0.68
1:A:27:PHE:CD1	9:A:826:HOH:O	2.51	0.63
1:A:254:ALA:HB1	6:A:607:PLM:H52	1.80	0.63
1:A:411:TYR:HB3	6:A:608:PLM:H91	1.81	0.62
7:A:612:GOL:C1	9:A:794:HOH:O	2.40	0.59
1:A:27:PHE:CE1	9:A:826:HOH:O	2.56	0.58
1:A:473:VAL:HG11	6:A:608:PLM:HD1	1.87	0.56
1:A:488:PHE:HB3	6:A:608:PLM:H51	1.87	0.56
1:A:224:PRO:HD2	1:A:296:ASP:HB3	1.87	0.54
1:A:217:ALA:HB3	1:A:343:VAL:HG13	1.89	0.53
1:A:79:THR:OG1	8:A:614:DMS:O	2.26	0.53
1:A:387:LEU:HB3	6:A:605:PLM:H71	1.90	0.53
1:A:422:THR:HG21	6:A:608:PLM:HG2	1.90	0.53
1:A:27:PHE:CG	9:A:826:HOH:O	2.62	0.52
1:A:67:HIS:H	8:A:616:DMS:H21	1.74	0.52
1:A:428:ARG:O	1:A:432:LYS:HG3	2.11	0.51
1:A:135:LEU:HB3	6:A:610:PLM:HB1	1.93	0.50
1:A:521:ARG:HG2	1:A:525:LYS:HE2	1.94	0.48
1:A:541:LYS:HA	1:A:541:LYS:HD2	1.68	0.48
1:A:138:TYR:O	1:A:142:ILE:HG12	2.13	0.48
1:A:108:ASP:HB2	1:A:148:TYR:HE2	1.80	0.47
1:A:516:LEU:HB3	1:A:520:GLU:HB2	1.95	0.47
1:A:307:ALA:O	1:A:312:SER:HB3	2.15	0.47
1:A:241:VAL:HG22	1:A:256:ASP:HB3	1.96	0.46
1:A:494:ASP:OD1	1:A:496:THR:HG22	2.16	0.46
1:A:306:ALA:HA	1:A:310:VAL:HG22	1.97	0.46
1:A:442:GLU:HA	1:A:445:ARG:HD2	1.99	0.45
1:A:218:ARG:HA	1:A:218:ARG:HD2	1.73	0.45
1:A:155:LEU:HD11	6:A:610:PLM:HG3	1.99	0.44
1:A:158:ALA:HB1	6:A:610:PLM:HA1	1.98	0.44
1:A:351:LYS:HG3	6:A:609:PLM:H41	1.99	0.44
1:A:27:PHE:CZ	9:A:826:HOH:O	2.71	0.43
1:A:108:ASP:HB2	1:A:148:TYR:CE2	2.53	0.43
1:A:460:LEU:HD21	6:A:608:PLM:HC1	2.00	0.43

*Continued on next page...*

Continued from previous page...

Atom-1	Atom-2	Interatomic distance (Å)	Clash overlap (Å)
1:A:100:GLU:O	1:A:104:GLN:HG2	2.18	0.43
1:A:281:LYS:NZ	9:A:706:HOH:O	2.34	0.43
1:A:398:LEU:HB3	1:A:402:LYS:HB2	2.01	0.42
1:A:560:LYS:HB2	1:A:560:LYS:HE2	1.62	0.42
1:A:72:ASP:O	1:A:76:THR:HG23	2.20	0.42
1:A:104:GLN:HG2	1:A:104:GLN:H	1.64	0.41
1:A:278:CYS:HA	1:A:281:LYS:HG3	2.01	0.41
1:A:197:ARG:HA	1:A:197:ARG:HD2	1.75	0.41
1:A:331:LEU:HD12	1:A:331:LEU:HA	1.91	0.41
1:A:208:GLU:HG3	1:A:239:THR:HG21	2.03	0.41
1:A:302:LEU:HA	1:A:303:PRO:HD3	1.88	0.41
1:A:29:GLN:HG2	1:A:147:PRO:HA	2.03	0.40
1:A:395:PHE:CZ	1:A:435:SER:HA	2.56	0.40

There are no symmetry-related clashes.

## 5.3 Torsion angles [i](#)

### 5.3.1 Protein backbone [i](#)

In the following table, the Percentiles column shows the percent Ramachandran outliers of the chain as a percentile score with respect to all X-ray entries followed by that with respect to entries of similar resolution.

The Analysed column shows the number of residues for which the backbone conformation was analysed, and the total number of residues.

Mol	Chain	Analysed	Favoured	Allowed	Outliers	Percentiles
1	A	579/585 (99%)	568 (98%)	11 (2%)	0	<b>100</b> <b>100</b>

There are no Ramachandran outliers to report.

### 5.3.2 Protein sidechains [i](#)

In the following table, the Percentiles column shows the percent sidechain outliers of the chain as a percentile score with respect to all X-ray entries followed by that with respect to entries of similar resolution.

The Analysed column shows the number of residues for which the sidechain conformation was analysed, and the total number of residues.

Mol	Chain	Analysed	Rotameric	Outliers	Percentiles
1	A	503/511 (98%)	486 (97%)	17 (3%)	37 35

All (17) residues with a non-rotameric sidechain are listed below:

Mol	Chain	Res	Type
1	A	4	LYS
1	A	109	ASN
1	A	129	ASP
1	A	140	TYR
1	A	203	LEU
1	A	222	ARG
1	A	312	SER
1	A	334	TYR
1	A	357	LEU
1	A	435	SER
1	A	436	LYS
1	A	467	THR
1	A	479	GLU
1	A	515	THR
1	A	517	SER
1	A	520	GLU
1	A	560	LYS

Sometimes sidechains can be flipped to improve hydrogen bonding and reduce clashes. All (3) such sidechains are listed below:

Mol	Chain	Res	Type
1	A	196	GLN
1	A	397	GLN
1	A	458	ASN

### 5.3.3 RNA [i](#)

There are no RNA molecules in this entry.

## 5.4 Non-standard residues in protein, DNA, RNA chains [i](#)

There are no non-standard protein/DNA/RNA residues in this entry.

## 5.5 Carbohydrates [i](#)

There are no monosaccharides in this entry.

## 5.6 Ligand geometry [i](#)

Of 16 ligands modelled in this entry, 2 are monoatomic - leaving 14 for Mogul analysis.

In the following table, the Counts columns list the number of bonds (or angles) for which Mogul statistics could be retrieved, the number of bonds (or angles) that are observed in the model and the number of bonds (or angles) that are defined in the Chemical Component Dictionary. The Link column lists molecule types, if any, to which the group is linked. The Z score for a bond length (or angle) is the number of standard deviations the observed value is removed from the expected value. A bond length (or angle) with  $|Z| > 2$  is considered an outlier worth inspection. RMSZ is the root-mean-square of all Z scores of the bond lengths (or angles).

Mol	Type	Chain	Res	Link	Bond lengths			Bond angles		
					Counts	RMSZ	# Z  > 2	Counts	RMSZ	# Z  > 2
3	VAL	A	602	5	5,7,7	2.18	2 (40%)	7,9,9	2.87	1 (14%)
2	NO	A	601	5	0,1,1	-	-	-		
6	PLM	A	610	-	17,17,17	1.01	1 (5%)	17,17,17	0.74	1 (5%)
6	PLM	A	605	-	17,17,17	0.89	1 (5%)	17,17,17	0.75	2 (11%)
6	PLM	A	607	-	17,17,17	0.94	1 (5%)	17,17,17	0.73	1 (5%)
8	DMS	A	616	-	3,3,3	0.64	0	3,3,3	0.48	0
6	PLM	A	606	-	17,17,17	0.89	1 (5%)	17,17,17	0.74	2 (11%)
7	GOL	A	611	-	5,5,5	0.88	0	5,5,5	1.00	0
8	DMS	A	615	-	3,3,3	0.65	0	3,3,3	0.51	0
8	DMS	A	613	-	3,3,3	0.66	0	3,3,3	0.52	0
6	PLM	A	609	-	17,17,17	0.94	1 (5%)	17,17,17	0.74	1 (5%)
8	DMS	A	614	-	3,3,3	0.66	0	3,3,3	0.53	0
6	PLM	A	608	-	17,17,17	0.93	1 (5%)	17,17,17	0.74	2 (11%)
7	GOL	A	612	-	5,5,5	0.90	0	5,5,5	1.00	0

In the following table, the Chirals column lists the number of chiral outliers, the number of chiral centers analysed, the number of these observed in the model and the number defined in the Chemical Component Dictionary. Similar counts are reported in the Torsion and Rings columns. '-' means no outliers of that kind were identified.

Mol	Type	Chain	Res	Link	Chirals	Torsions	Rings
3	VAL	A	602	5	-	5/8/8/8	-
6	PLM	A	610	-	-	4/15/15/15	-
6	PLM	A	605	-	-	7/15/15/15	-

*Continued on next page...*

*Continued from previous page...*

Mol	Type	Chain	Res	Link	Chirals	Torsions	Rings
6	PLM	A	607	-	-	9/15/15/15	-
6	PLM	A	606	-	-	5/15/15/15	-
7	GOL	A	611	-	-	2/4/4/4	-
6	PLM	A	609	-	-	9/15/15/15	-
6	PLM	A	608	-	-	9/15/15/15	-
7	GOL	A	612	-	-	2/4/4/4	-

All (8) bond length outliers are listed below:

Mol	Chain	Res	Type	Atoms	Z	Observed(Å)	Ideal(Å)
3	A	602	VAL	O-C	4.43	1.35	1.22
6	A	610	PLM	C2-C1	3.23	1.58	1.50
6	A	609	PLM	C2-C1	3.06	1.57	1.50
6	A	607	PLM	C2-C1	3.04	1.57	1.50
6	A	608	PLM	C2-C1	2.98	1.57	1.50
6	A	606	PLM	C2-C1	2.80	1.57	1.50
6	A	605	PLM	C2-C1	2.77	1.57	1.50
3	A	602	VAL	OXT-C	-2.03	1.23	1.30

All (10) bond angle outliers are listed below:

Mol	Chain	Res	Type	Atoms	Z	Observed(°)	Ideal(°)
3	A	602	VAL	OXT-C-O	-7.07	108.03	124.09
6	A	605	PLM	O1-C1-O2	2.22	128.84	123.30
6	A	607	PLM	O1-C1-O2	2.22	128.84	123.30
6	A	606	PLM	O1-C1-O2	2.22	128.83	123.30
6	A	609	PLM	O1-C1-O2	2.21	128.80	123.30
6	A	608	PLM	O1-C1-O2	2.17	128.71	123.30
6	A	610	PLM	O1-C1-O2	2.16	128.68	123.30
6	A	608	PLM	O2-C1-C2	-2.03	116.56	123.08
6	A	606	PLM	O2-C1-C2	-2.02	116.59	123.08
6	A	605	PLM	O2-C1-C2	-2.00	116.64	123.08

There are no chirality outliers.

All (52) torsion outliers are listed below:

Mol	Chain	Res	Type	Atoms
3	A	602	VAL	N-CA-CB-CG2
7	A	612	GOL	O1-C1-C2-C3
6	A	608	PLM	C1-C2-C3-C4

*Continued on next page...*

*Continued from previous page...*

Mol	Chain	Res	Type	Atoms
6	A	609	PLM	C1-C2-C3-C4
6	A	606	PLM	C1-C2-C3-C4
6	A	609	PLM	C7-C8-C9-CA
6	A	607	PLM	C4-C5-C6-C7
6	A	608	PLM	C7-C8-C9-CA
6	A	607	PLM	C5-C6-C7-C8
6	A	608	PLM	C9-CA-CB-CC
6	A	607	PLM	C6-C7-C8-C9
6	A	609	PLM	C2-C3-C4-C5
6	A	609	PLM	C9-CA-CB-CC
6	A	610	PLM	CB-CC-CD-CE
7	A	611	GOL	O1-C1-C2-C3
6	A	605	PLM	CB-CC-CD-CE
6	A	608	PLM	C3-C4-C5-C6
6	A	610	PLM	CC-CD-CE-CF
6	A	607	PLM	C7-C8-C9-CA
7	A	612	GOL	O1-C1-C2-O2
3	A	602	VAL	O-C-CA-CB
3	A	602	VAL	OXT-C-CA-CB
6	A	608	PLM	C6-C7-C8-C9
6	A	609	PLM	CA-CB-CC-CD
6	A	607	PLM	CC-CD-CE-CF
6	A	606	PLM	C3-C4-C5-C6
6	A	607	PLM	C9-CA-CB-CC
6	A	606	PLM	C2-C3-C4-C5
6	A	607	PLM	C3-C4-C5-C6
6	A	605	PLM	CA-CB-CC-CD
6	A	608	PLM	C5-C6-C7-C8
3	A	602	VAL	OXT-C-CA-N
6	A	605	PLM	C9-CA-CB-CC
6	A	608	PLM	C2-C3-C4-C5
7	A	611	GOL	O1-C1-C2-O2
6	A	605	PLM	C8-C9-CA-CB
6	A	607	PLM	CD-CE-CF-CG
6	A	610	PLM	O2-C1-C2-C3
6	A	606	PLM	O1-C1-C2-C3
6	A	609	PLM	O1-C1-C2-C3
6	A	606	PLM	O2-C1-C2-C3
6	A	609	PLM	O2-C1-C2-C3
6	A	607	PLM	C2-C3-C4-C5
6	A	608	PLM	CB-CC-CD-CE
6	A	610	PLM	O1-C1-C2-C3

*Continued on next page...*



*Continued from previous page...*

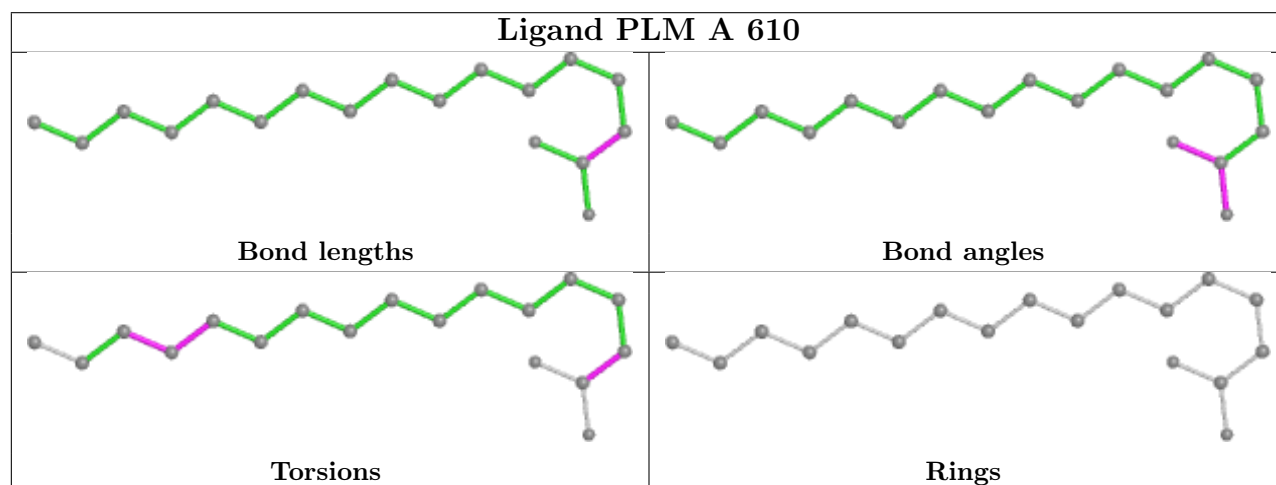
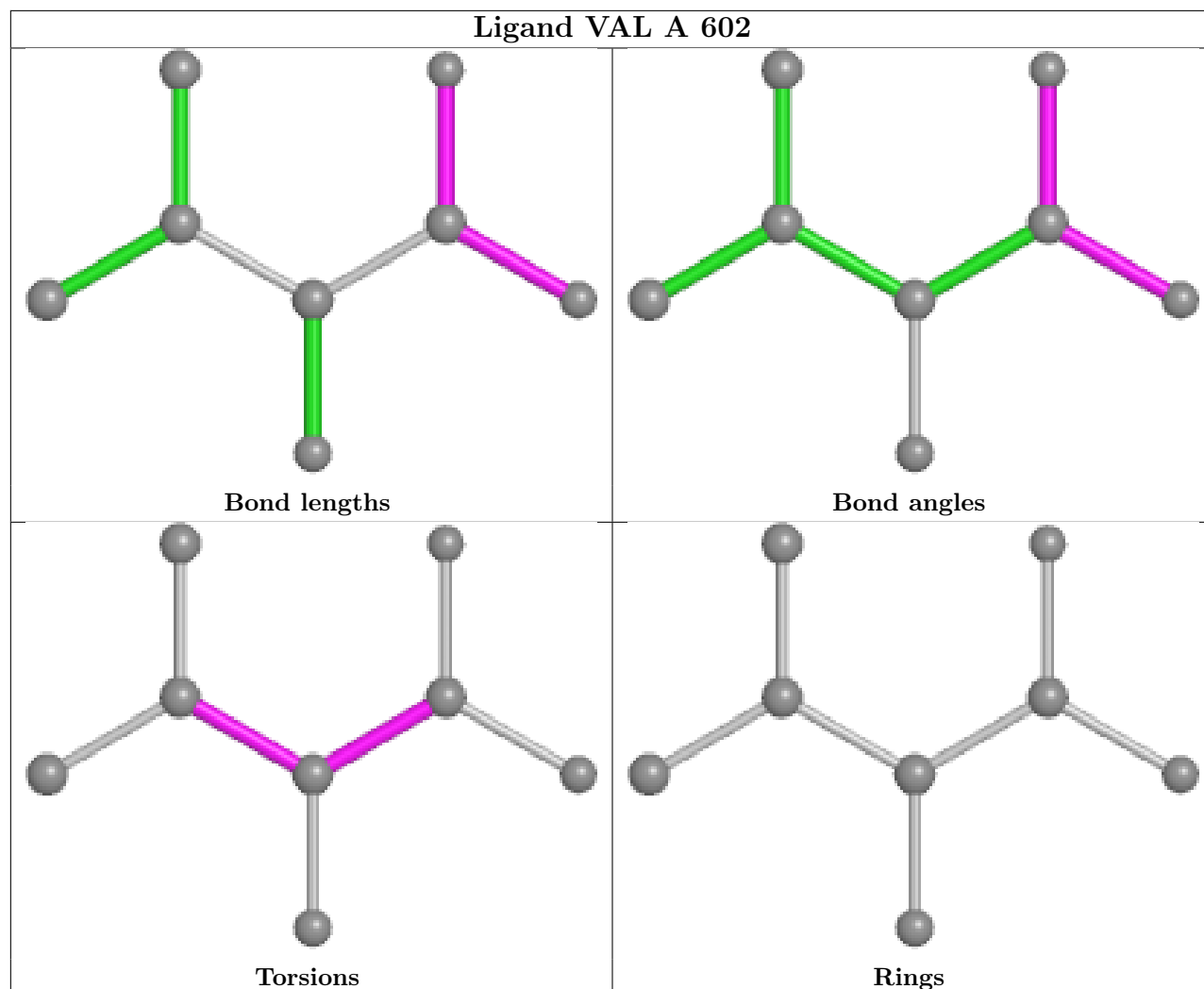
Mol	Chain	Res	Type	Atoms
6	A	609	PLM	C4-C5-C6-C7
6	A	608	PLM	CA-CB-CC-CD
6	A	605	PLM	O2-C1-C2-C3
6	A	605	PLM	O1-C1-C2-C3
6	A	605	PLM	C7-C8-C9-CA
6	A	609	PLM	CC-CD-CE-CF
3	A	602	VAL	C-CA-CB-CG1

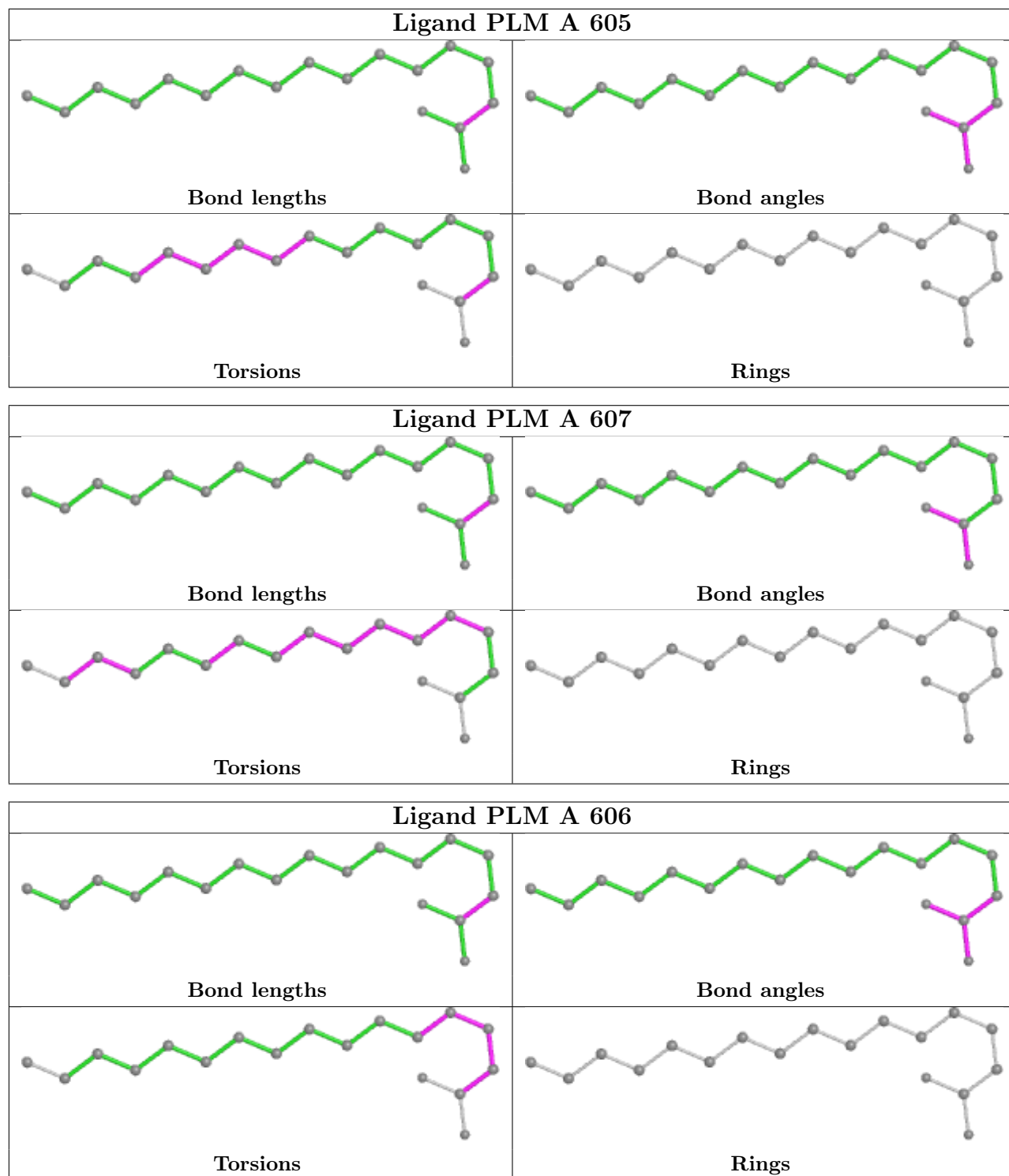
There are no ring outliers.

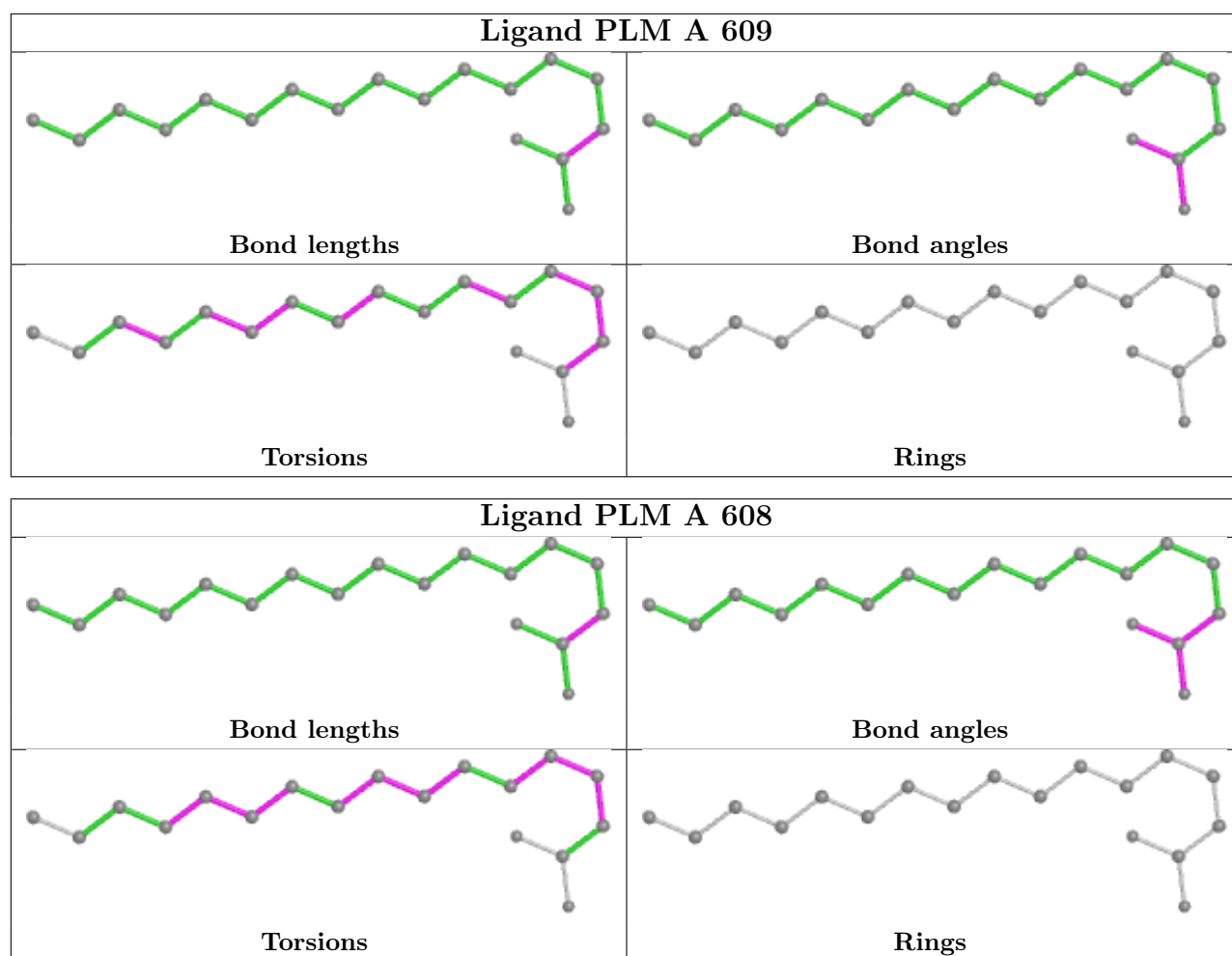
8 monomers are involved in 18 short contacts:

Mol	Chain	Res	Type	Clashes	Symm-Clashes
6	A	610	PLM	3	0
6	A	605	PLM	1	0
6	A	607	PLM	1	0
8	A	616	DMS	3	0
6	A	609	PLM	1	0
8	A	614	DMS	1	0
6	A	608	PLM	6	0
7	A	612	GOL	2	0

The following is a two-dimensional graphical depiction of Mogul quality analysis of bond lengths, bond angles, torsion angles, and ring geometry for all instances of the Ligand of Interest. In addition, ligands with molecular weight > 250 and outliers as shown on the validation Tables will also be included. For torsion angles, if less than 5% of the Mogul distribution of torsion angles is within 10 degrees of the torsion angle in question, then that torsion angle is considered an outlier. Any bond that is central to one or more torsion angles identified as an outlier by Mogul will be highlighted in the graph. For rings, the root-mean-square deviation (RMSD) between the ring in question and similar rings identified by Mogul is calculated over all ring torsion angles. If the average RMSD is greater than 60 degrees and the minimal RMSD between the ring in question and any Mogul-identified rings is also greater than 60 degrees, then that ring is considered an outlier. The outliers are highlighted in purple. The color gray indicates Mogul did not find sufficient equivalents in the CSD to analyse the geometry.







## 5.7 Other polymers [\(i\)](#)

There are no such residues in this entry.

## 5.8 Polymer linkage issues [\(i\)](#)

There are no chain breaks in this entry.

## 6 Fit of model and data [i](#)

### 6.1 Protein, DNA and RNA chains [i](#)

In the following table, the column labelled ‘#RSRZ> 2’ contains the number (and percentage) of RSRZ outliers, followed by percent RSRZ outliers for the chain as percentile scores relative to all X-ray entries and entries of similar resolution. The OWAB column contains the minimum, median, 95<sup>th</sup> percentile and maximum values of the occupancy-weighted average B-factor per residue. The column labelled ‘Q< 0.9’ lists the number of (and percentage) of residues with an average occupancy less than 0.9.

Mol	Chain	Analysed	<RSRZ>	#RSRZ>2	OWAB(Å <sup>2</sup> )	Q<0.9
1	A	581/585 (99%)	0.21	14 (2%) 59 67	29, 50, 68, 84	0

All (14) RSRZ outliers are listed below:

Mol	Chain	Res	Type	RSRZ
1	A	561	ALA	4.0
1	A	302	LEU	2.8
1	A	301	ASP	2.8
1	A	363	ALA	2.6
1	A	560	LYS	2.6
1	A	364	ALA	2.4
1	A	173	ASP	2.3
1	A	513	ILE	2.2
1	A	453	LEU	2.2
1	A	109	ASN	2.1
1	A	313	LYS	2.1
1	A	214	TRP	2.1
1	A	566	THR	2.0
1	A	276	LYS	2.0

### 6.2 Non-standard residues in protein, DNA, RNA chains [i](#)

There are no non-standard protein/DNA/RNA residues in this entry.

### 6.3 Carbohydrates [i](#)

There are no monosaccharides in this entry.

## 6.4 Ligands

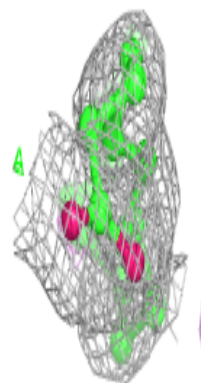
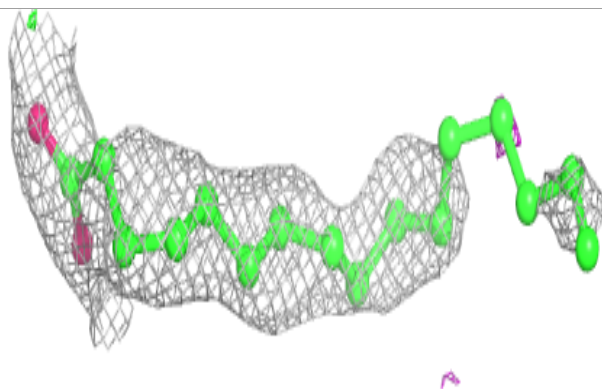
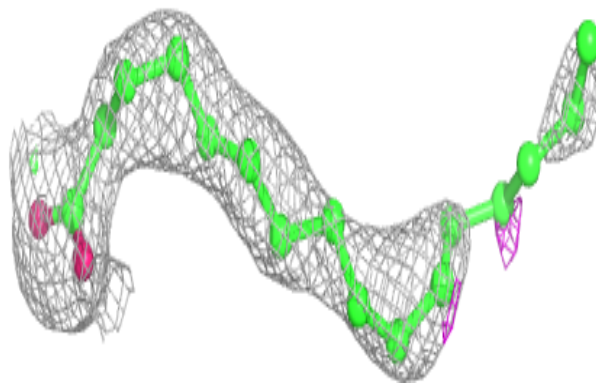
In the following table, the Atoms column lists the number of modelled atoms in the group and the number defined in the chemical component dictionary. The B-factors column lists the minimum, median, 95<sup>th</sup> percentile and maximum values of B factors of atoms in the group. The column labelled 'Q<0.9' lists the number of atoms with occupancy less than 0.9.

Mol	Type	Chain	Res	Atoms	RSCC	RSR	B-factors(Å <sup>2</sup> )	Q<0.9
6	PLM	A	608	18/18	0.72	0.32	42,54,63,65	0
6	PLM	A	610	18/18	0.73	0.26	45,58,73,73	0
3	VAL	A	602	8/8	0.82	0.21	64,69,73,75	0
8	DMS	A	615	4/4	0.84	0.21	53,58,71,78	0
7	GOL	A	612	6/6	0.86	0.20	51,55,65,67	0
8	DMS	A	613	4/4	0.87	0.23	61,65,78,83	0
6	PLM	A	609	18/18	0.87	0.23	40,51,63,70	0
8	DMS	A	616	4/4	0.87	0.19	48,51,67,85	0
7	GOL	A	611	6/6	0.88	0.18	58,61,63,63	0
8	DMS	A	614	4/4	0.90	0.37	74,78,78,90	0
6	PLM	A	607	18/18	0.92	0.17	39,46,53,54	0
5	RU	A	604	1/1	0.92	0.04	77,77,77,77	1
6	PLM	A	606	18/18	0.93	0.16	35,43,50,52	0
6	PLM	A	605	18/18	0.94	0.24	35,48,56,59	0
2	NO	A	601	2/2	0.96	0.07	76,76,76,77	0
4	CL	A	603	1/1	0.97	0.26	97,97,97,97	0

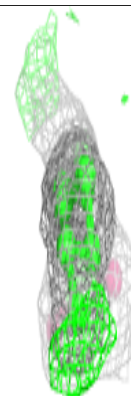
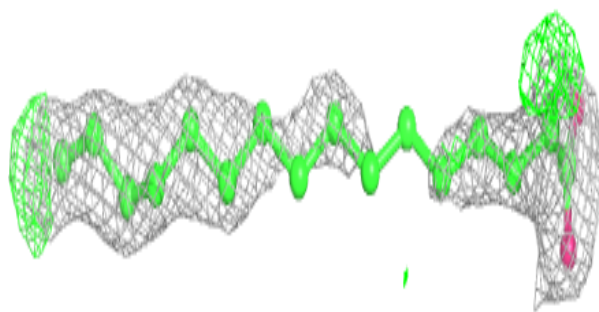
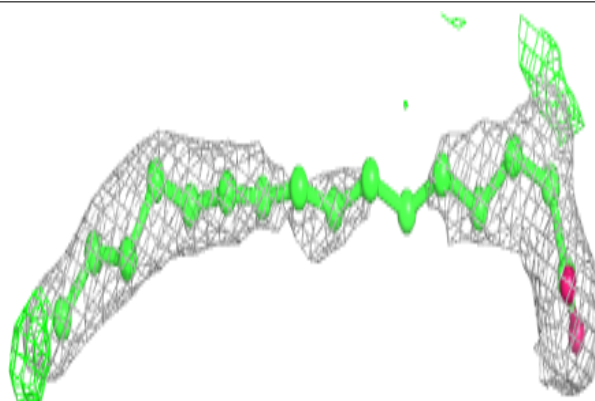
The following is a graphical depiction of the model fit to experimental electron density of all instances of the Ligand of Interest. In addition, ligands with molecular weight > 250 and outliers as shown on the geometry validation Tables will also be included. Each fit is shown from different orientation to approximate a three-dimensional view.

**Electron density around PLM A 608:**

$2mF_o-DF_c$  (at 0.7 rmsd) in gray  
 $mF_o-DF_c$  (at 3 rmsd) in purple (negative)  
and green (positive)

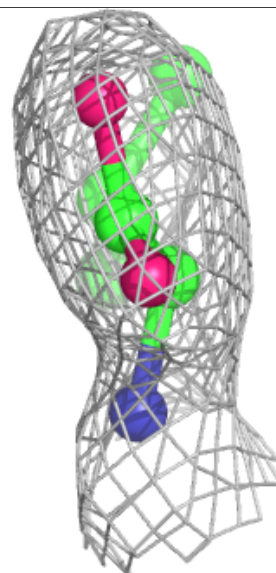
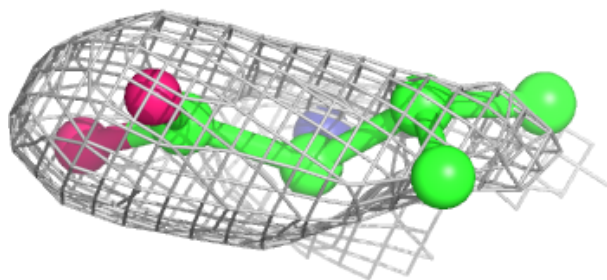
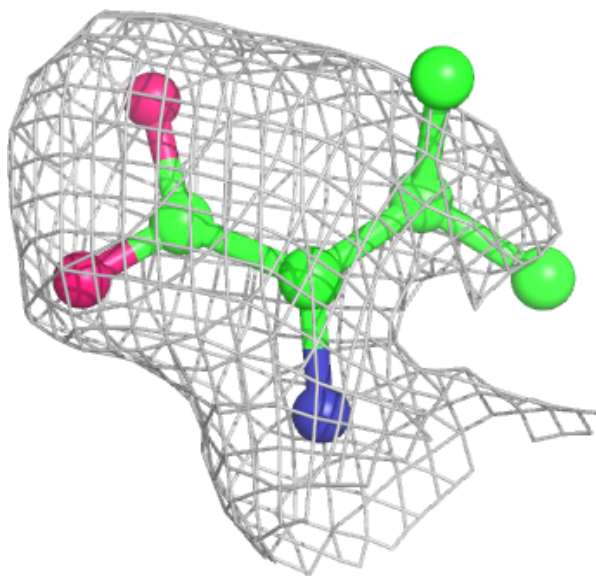
**Electron density around PLM A 610:**

$2mF_o-DF_c$  (at 0.7 rmsd) in gray  
 $mF_o-DF_c$  (at 3 rmsd) in purple (negative)  
and green (positive)



**Electron density around VAL A 602:**

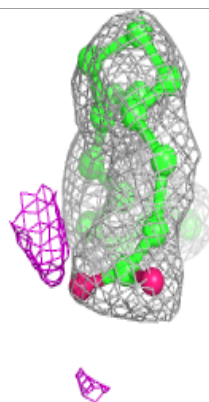
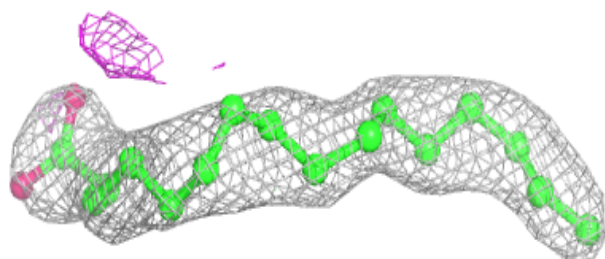
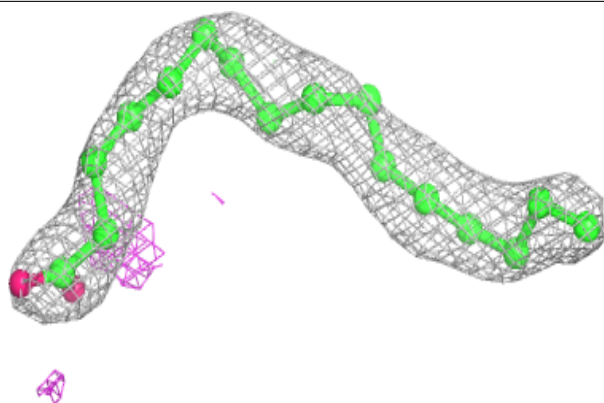
$2mF_o-DF_c$  (at 0.7 rmsd) in gray  
 $mF_o-DF_c$  (at 3 rmsd) in purple (negative)  
and green (positive)



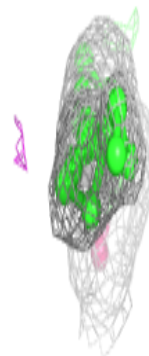
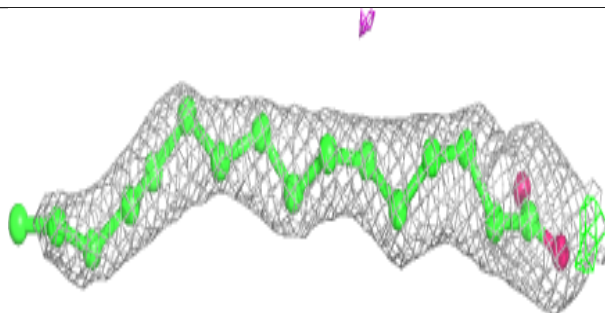
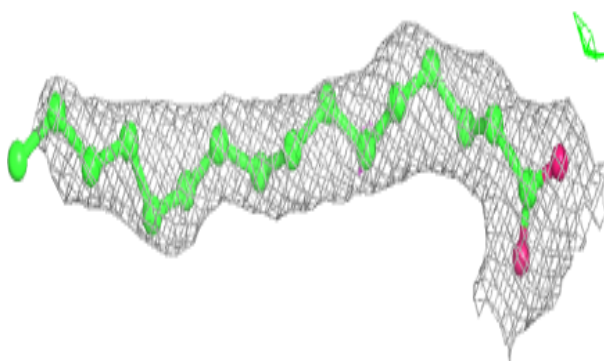


**Electron density around PLM A 609:**

$2mF_o-DF_c$  (at 0.7 rmsd) in gray  
 $mF_o-DF_c$  (at 3 rmsd) in purple (negative)  
and green (positive)

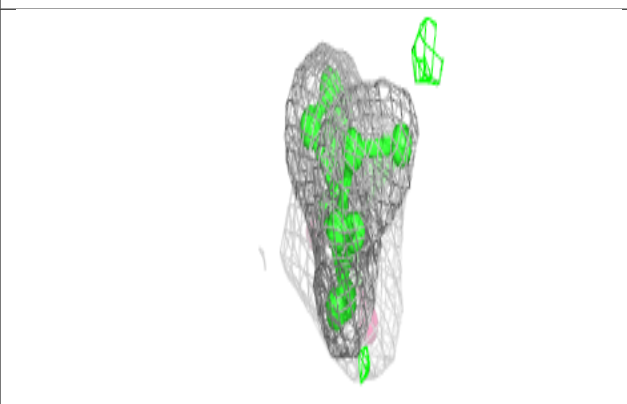
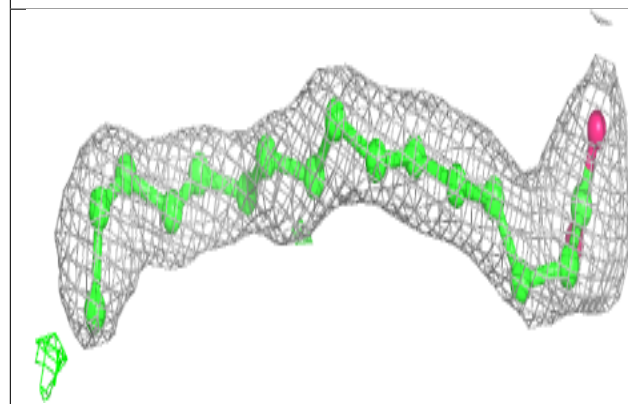
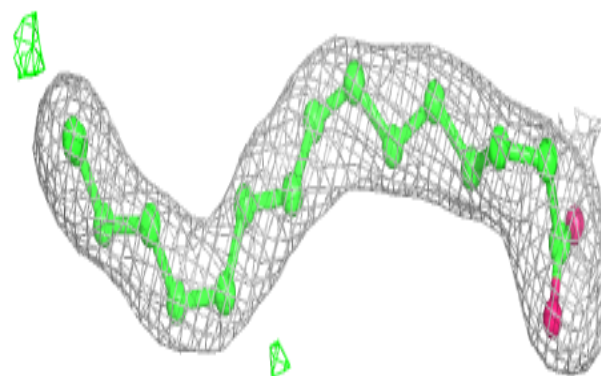
**Electron density around PLM A 607:**

$2mF_o-DF_c$  (at 0.7 rmsd) in gray  
 $mF_o-DF_c$  (at 3 rmsd) in purple (negative)  
and green (positive)

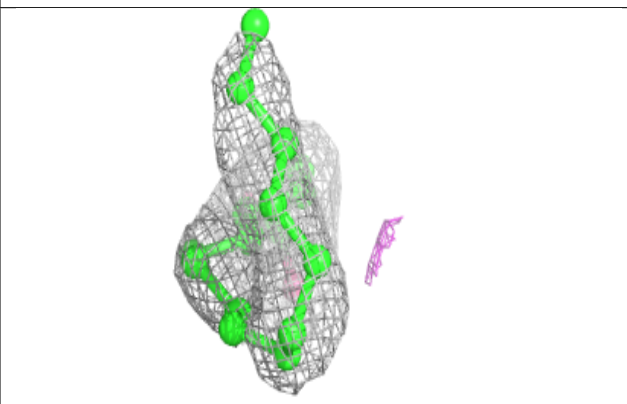
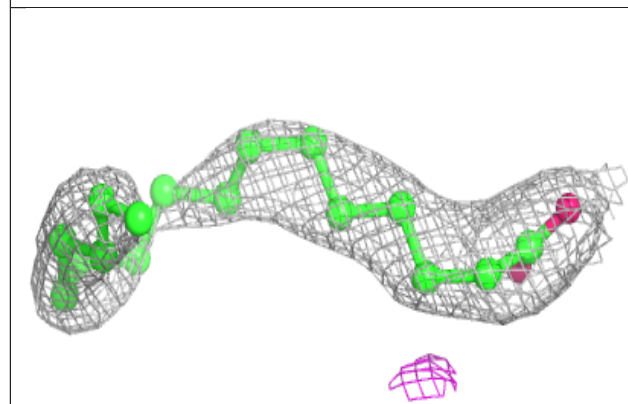
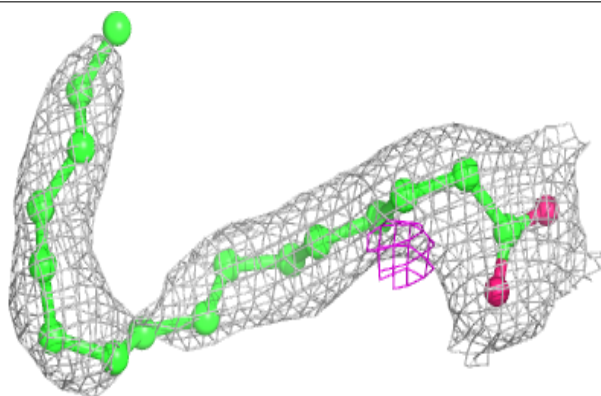


**Electron density around PLM A 606:**

$2mF_o-DF_c$  (at 0.7 rmsd) in gray  
 $mF_o-DF_c$  (at 3 rmsd) in purple (negative)  
and green (positive)

**Electron density around PLM A 605:**

$2mF_o-DF_c$  (at 0.7 rmsd) in gray  
 $mF_o-DF_c$  (at 3 rmsd) in purple (negative)  
and green (positive)



## 6.5 Other polymers [i](#)

There are no such residues in this entry.