



# Full wwPDB X-ray Structure Validation Report ⓘ

Jan 21, 2025 – 12:30 PM JST

PDB ID : 8K6V  
Title : LnaB-Actin-PRUb ternary complex  
Authors : Chen, T.T.; Ouyang, S.Y.  
Deposited on : 2023-07-25  
Resolution : 2.60 Å(reported)

This is a Full wwPDB X-ray Structure Validation Report for a publicly released PDB entry.

We welcome your comments at [validation@mail.wwpdb.org](mailto:validation@mail.wwpdb.org)

A user guide is available at

<https://www.wwpdb.org/validation/2017/XrayValidationReportHelp>

with specific help available everywhere you see the ⓘ symbol.

The types of validation reports are described at

<http://www.wwpdb.org/validation/2017/FAQs#types>.

---

The following versions of software and data (see [references ⓘ](#)) were used in the production of this report:

MolProbity : 4.02b-467  
Mogul : 1.8.5 (274361), CSD as541be (2020)  
Xtriage (Phenix) : 1.21  
EDS : 3.0  
buster-report : 1.1.7 (2018)  
Percentile statistics : 20231227.v01 (using entries in the PDB archive December 27th 2023)  
CCP4 : 9.0.004 (Gargrove)  
Density-Fitness : 1.0.11  
Ideal geometry (proteins) : Engh & Huber (2001)  
Ideal geometry (DNA, RNA) : Parkinson et al. (1996)  
Validation Pipeline (wwPDB-VP) : 2.40

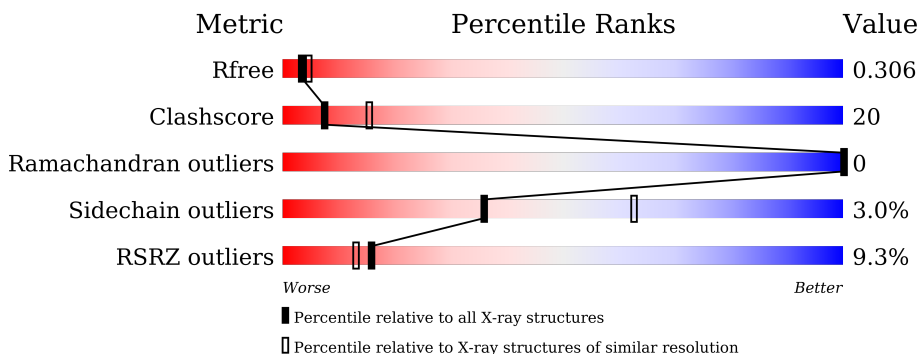
# 1 Overall quality at a glance

The following experimental techniques were used to determine the structure:

*X-RAY DIFFRACTION*

The reported resolution of this entry is 2.60 Å.

Percentile scores (ranging between 0-100) for global validation metrics of the entry are shown in the following graphic. The table shows the number of entries on which the scores are based.



Metric	Whole archive (#Entries)	Similar resolution (#Entries, resolution range(Å))
$R_{free}$	164625	3775 (2.60-2.60)
Clashscore	180529	4181 (2.60-2.60)
Ramachandran outliers	177936	4129 (2.60-2.60)
Sidechain outliers	177891	4129 (2.60-2.60)
RSRZ outliers	164620	3775 (2.60-2.60)

The table below summarises the geometric issues observed across the polymeric chains and their fit to the electron density. The red, orange, yellow and green segments of the lower bar indicate the fraction of residues that contain outliers for  $\geq 3$ , 2, 1 and 0 types of geometric quality criteria respectively. A grey segment represents the fraction of residues that are not modelled. The numeric value for each fraction is indicated below the corresponding segment, with a dot representing fractions  $\leq 5\%$ . The upper red bar (where present) indicates the fraction of residues that have poor fit to the electron density. The numeric value is given above the bar.

Mol	Chain	Length	Quality of chain
1	A	375	
2	B	352	
3	C	76	

The following table lists non-polymeric compounds, carbohydrate monomers and non-standard residues in protein, DNA, RNA chains that are outliers for geometric or electron-density-fit criteria:

Mol	Type	Chain	Res	Chirality	Geometry	Clashes	Electron density
5	AR6	B	401	-	-	X	-

## 2 Entry composition [i](#)

There are 6 unique types of molecules in this entry. The entry contains 6478 atoms, of which 34 are hydrogens and 0 are deuteriums.

In the tables below, the ZeroOcc column contains the number of atoms modelled with zero occupancy, the AltConf column contains the number of residues with at least one atom in alternate conformation and the Trace column contains the number of residues modelled with at most 2 atoms.

- Molecule 1 is a protein called Actin gamma 1.

Mol	Chain	Residues	Atoms					ZeroOcc	AltConf	Trace
			Total	C	N	O	S			
1	A	366	2841	1800	477	543	21	0	0	0

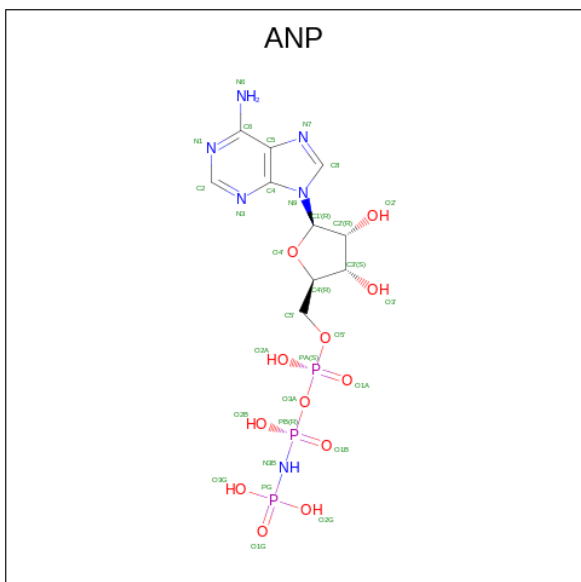
- Molecule 2 is a protein called LnaB.

Mol	Chain	Residues	Atoms					ZeroOcc	AltConf	Trace
			Total	C	N	O	S			
2	B	346	2809	1792	461	551	5	0	0	0

- Molecule 3 is a protein called Ubiquitin.

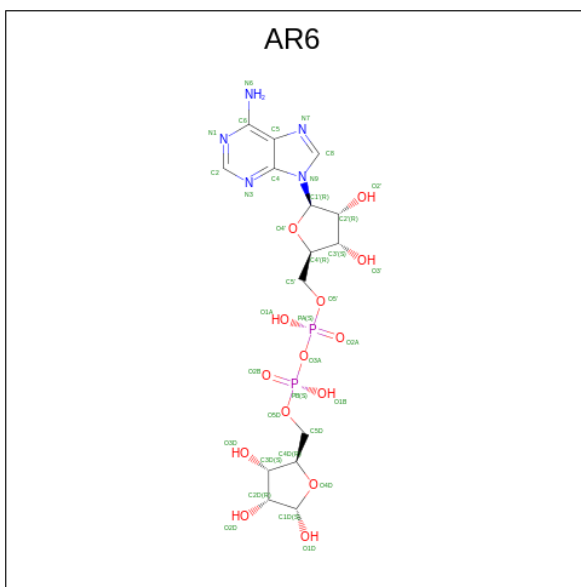
Mol	Chain	Residues	Atoms					ZeroOcc	AltConf	Trace
			Total	C	N	O	S			
3	C	76	601	378	105	117	1	0	0	0

- Molecule 4 is PHOSPHOAMINOPHOSPHONIC ACID-ADENYLATE ESTER (three-letter code: ANP) (formula:  $C_{10}H_{17}N_6O_{12}P_3$ ) (labeled as "Ligand of Interest" by depositor).



Mol	Chain	Residues	Atoms					ZeroOcc	AltConf	
			Total	C	H	N	O			P
4	A	1	44	10	13	6	12	3	0	0

- Molecule 5 is [(2R,3S,4R,5R)-5-(6-AMINOPURIN-9-YL)-3,4-DIHYDROXY-OXOLAN-2-YL]METHYL [HYDROXY-[[[(2R,3S,4R,5S)-3,4,5-TRIHYDROXYOXOLAN-2-YL]METHOXY]PHOSPHORYL] HYDROGEN PHOSPHATE (three-letter code: AR6) (formula: C<sub>15</sub>H<sub>23</sub>N<sub>5</sub>O<sub>14</sub>P<sub>2</sub>) (labeled as "Ligand of Interest" by depositor).



Mol	Chain	Residues	Atoms					ZeroOcc	AltConf	
			Total	C	H	N	O			P
5	B	1	57	15	21	5	14	2	0	0

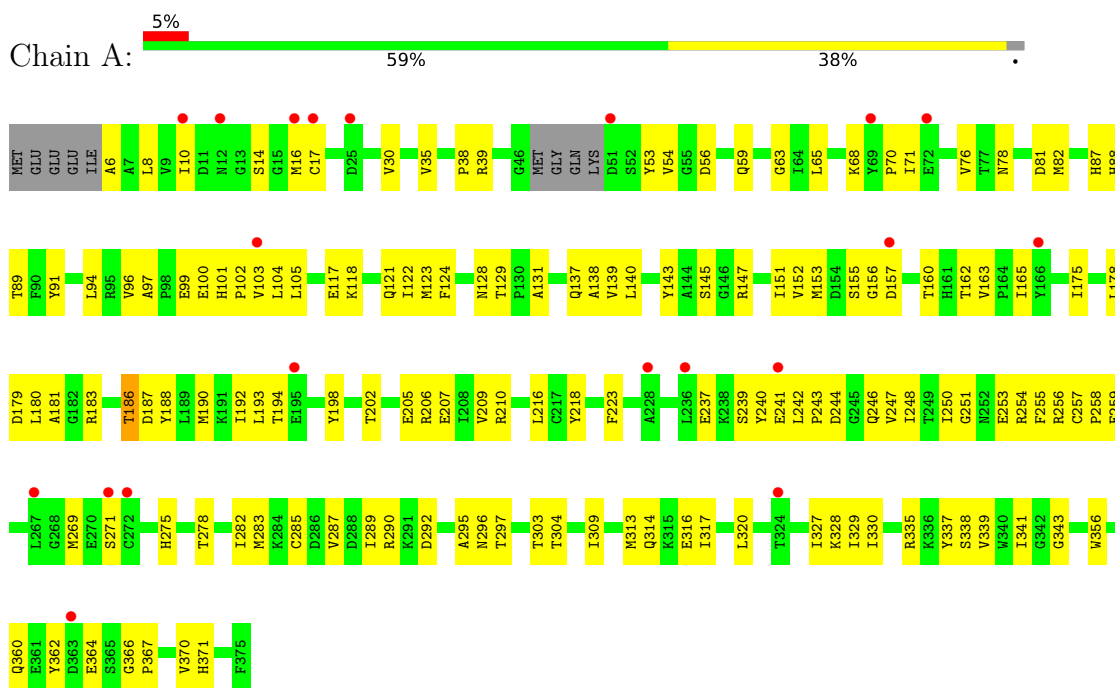
- Molecule 6 is water.

Mol	Chain	Residues	Atoms	ZeroOcc	AltConf
6	A	50	Total O 50 50	0	0
6	B	69	Total O 69 69	0	0
6	C	7	Total O 7 7	0	0

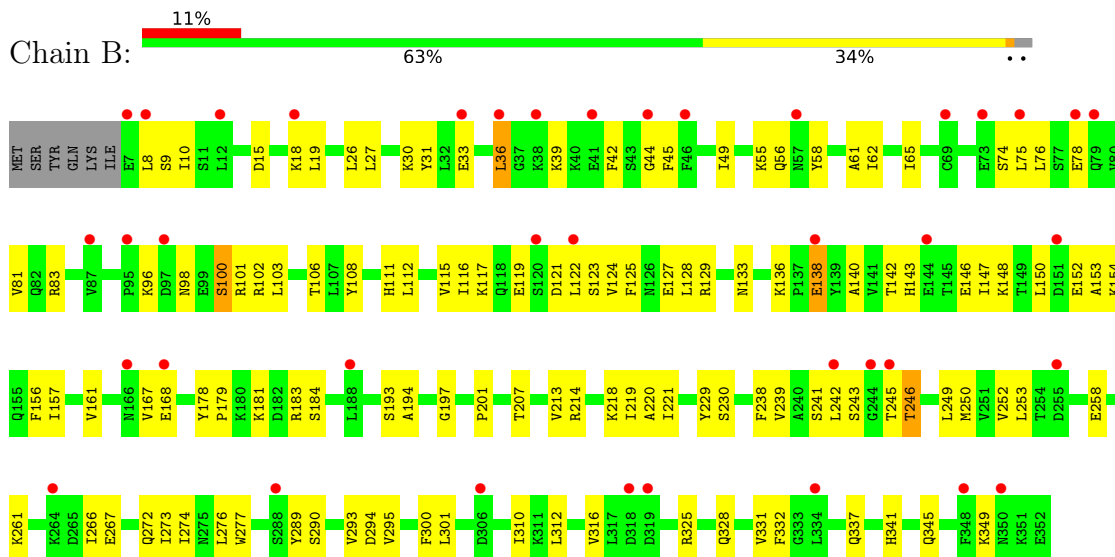
### 3 Residue-property plots [i](#)

These plots are drawn for all protein, RNA, DNA and oligosaccharide chains in the entry. The first graphic for a chain summarises the proportions of the various outlier classes displayed in the second graphic. The second graphic shows the sequence view annotated by issues in geometry and electron density. Residues are color-coded according to the number of geometric quality criteria for which they contain at least one outlier: green = 0, yellow = 1, orange = 2 and red = 3 or more. A red dot above a residue indicates a poor fit to the electron density ( $RSRZ > 2$ ). Stretches of 2 or more consecutive residues without any outlier are shown as a green connector. Residues present in the sample, but not in the model, are shown in grey.

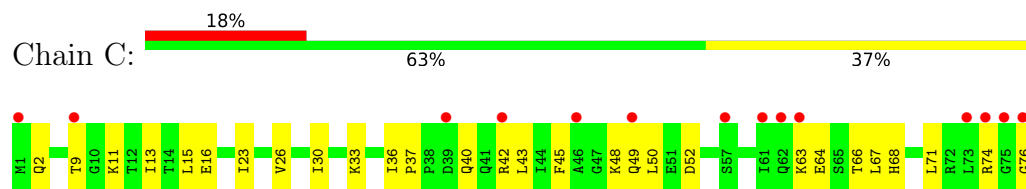
- Molecule 1: Actin gamma 1



- Molecule 2: LnaB



## ● Molecule 3: Ubiquitin



## 4 Data and refinement statistics

Property	Value	Source
Space group	P 21 21 2	Depositor
Cell constants a, b, c, $\alpha$ , $\beta$ , $\gamma$	215.96Å 55.04Å 79.75Å 90.00° 90.00° 90.00°	Depositor
Resolution (Å)	79.75 – 2.60 79.75 – 2.60	Depositor EDS
% Data completeness (in resolution range)	99.7 (79.75-2.60) 99.7 (79.75-2.60)	Depositor EDS
$R_{merge}$	(Not available)	Depositor
$R_{sym}$	(Not available)	Depositor
$\langle I/\sigma(I) \rangle$ <sup>1</sup>	1.61 (at 2.62Å)	Xtrriage
Refinement program	PHENIX (1.20.1_4487: ???)	Depositor
R, $R_{free}$	0.253 , 0.307 0.251 , 0.306	Depositor DCC
$R_{free}$ test set	1513 reflections (5.02%)	wwPDB-VP
Wilson B-factor (Å <sup>2</sup> )	37.7	Xtrriage
Anisotropy	0.359	Xtrriage
Bulk solvent $k_{sol}$ (e/Å <sup>3</sup> ), $B_{sol}$ (Å <sup>2</sup> )	0.34 , 43.7	EDS
L-test for twinning <sup>2</sup>	$\langle  L  \rangle = 0.45$ , $\langle L^2 \rangle = 0.29$	Xtrriage
Estimated twinning fraction	No twinning to report.	Xtrriage
$F_o, F_c$ correlation	0.88	EDS
Total number of atoms	6478	wwPDB-VP
Average B, all atoms (Å <sup>2</sup> )	43.0	wwPDB-VP

Xtrriage's analysis on translational NCS is as follows: *The largest off-origin peak in the Patterson function is 3.62% of the height of the origin peak. No significant pseudotranslation is detected.*

<sup>1</sup>Intensities estimated from amplitudes.

<sup>2</sup>Theoretical values of  $\langle |L| \rangle$ ,  $\langle L^2 \rangle$  for acentric reflections are 0.5, 0.333 respectively for untwinned datasets, and 0.375, 0.2 for perfectly twinned datasets.



## 5 Model quality

### 5.1 Standard geometry

Bond lengths and bond angles in the following residue types are not validated in this section: ANP, AR6

The Z score for a bond length (or angle) is the number of standard deviations the observed value is removed from the expected value. A bond length (or angle) with  $|Z| > 5$  is considered an outlier worth inspection. RMSZ is the root-mean-square of all Z scores of the bond lengths (or angles).

Mol	Chain	Bond lengths		Bond angles	
		RMSZ	# Z  >5	RMSZ	# Z  >5
1	A	0.64	0/2903	0.74	0/3933
2	B	0.70	0/2864	0.72	0/3865
3	C	0.63	0/607	0.72	0/816
All	All	0.67	0/6374	0.73	0/8614

There are no bond length outliers.

There are no bond angle outliers.

There are no chirality outliers.

There are no planarity outliers.

### 5.2 Too-close contacts

In the following table, the Non-H and H(model) columns list the number of non-hydrogen atoms and hydrogen atoms in the chain respectively. The H(added) column lists the number of hydrogen atoms added and optimized by MolProbity. The Clashes column lists the number of clashes within the asymmetric unit, whereas Symm-Clashes lists symmetry-related clashes.

Mol	Chain	Non-H	H(model)	H(added)	Clashes	Symm-Clashes
1	A	2841	0	2790	131	0
2	B	2809	0	2810	93	0
3	C	601	0	629	31	0
4	A	31	13	12	1	0
5	B	36	21	20	9	0
6	A	50	0	0	1	0
6	B	69	0	0	5	0
6	C	7	0	0	0	0
All	All	6444	34	6261	252	0

The all-atom clashscore is defined as the number of clashes found per 1000 atoms (including

hydrogen atoms). The all-atom clashscore for this structure is 20.

All (252) close contacts within the same asymmetric unit are listed below, sorted by their clash magnitude.

Atom-1	Atom-2	Interatomic distance (Å)	Clash overlap (Å)
3:C:23:ILE:HB	3:C:52:ASP:HA	1.32	1.06
1:A:76:VAL:HG13	1:A:82:MET:HE3	1.38	1.05
1:A:10:ILE:HG23	1:A:105:LEU:HD23	1.49	0.91
3:C:36:ILE:HG23	3:C:40:GLN:HE21	1.37	0.89
2:B:112:LEU:O	2:B:116:ILE:HG12	1.70	0.89
3:C:40:GLN:HG3	3:C:71:LEU:HD12	1.55	0.88
1:A:71:ILE:HD11	1:A:76:VAL:HG22	1.55	0.87
1:A:118:LYS:HE3	1:A:122:ILE:HD11	1.57	0.86
2:B:8:LEU:HA	6:B:522:HOH:O	1.75	0.86
1:A:283:MET:HA	1:A:283:MET:HE2	1.60	0.84
1:A:183:ARG:HA	1:A:210:ARG:HH22	1.42	0.83
2:B:74:SER:HA	6:B:551:HOH:O	1.79	0.81
1:A:335:ARG:HA	1:A:338:SER:OG	1.79	0.81
2:B:181:LYS:HG3	2:B:242:LEU:HB2	1.62	0.80
1:A:183:ARG:HA	1:A:210:ARG:NH2	1.95	0.80
2:B:325:ARG:O	2:B:325:ARG:NH1	2.16	0.79
2:B:36:LEU:HD11	2:B:75:LEU:HB3	1.65	0.78
1:A:10:ILE:HD12	1:A:89:THR:HG21	1.65	0.78
1:A:188:TYR:O	1:A:192:ILE:HG13	1.85	0.76
2:B:61:ALA:O	2:B:65:ILE:HG12	1.86	0.75
1:A:121:GLN:HB2	1:A:367:PRO:HG3	1.70	0.73
1:A:68:LYS:HE3	1:A:81:ASP:OD2	1.87	0.73
3:C:45:PHE:HB3	3:C:50:LEU:HD21	1.71	0.72
1:A:39:ARG:NH2	1:A:63:GLY:O	2.22	0.72
1:A:35:VAL:HA	1:A:53:TYR:O	1.90	0.71
1:A:151:ILE:HG23	1:A:297:THR:HG23	1.71	0.71
1:A:192:ILE:CG2	1:A:253:GLU:HG3	2.20	0.71
1:A:54:VAL:HG21	1:A:88:HIS:HB2	1.73	0.71
3:C:15:LEU:HD21	3:C:30:ILE:HG13	1.71	0.70
1:A:283:MET:HA	1:A:283:MET:CE	2.21	0.70
1:A:104:LEU:HD12	1:A:105:LEU:N	2.07	0.70
3:C:36:ILE:HG21	3:C:71:LEU:HD11	1.73	0.69
2:B:129:ARG:O	2:B:133:ASN:ND2	2.24	0.69
5:B:401:AR6:C6	3:C:49:GLN:OE1	2.41	0.69
1:A:38:PRO:HA	1:A:65:LEU:HA	1.72	0.69
2:B:133:ASN:OD1	2:B:142:THR:HG23	1.92	0.69
2:B:218:LYS:NZ	6:B:502:HOH:O	2.24	0.69
2:B:121:ASP:OD2	2:B:123:SER:HB3	1.93	0.68

*Continued on next page...*

*Continued from previous page...*

Atom-1	Atom-2	Interatomic distance (Å)	Clash overlap (Å)
1:A:151:ILE:HD11	1:A:162:THR:HG22	1.76	0.68
2:B:133:ASN:HA	2:B:136:LYS:HD3	1.73	0.68
1:A:317:ILE:HG22	1:A:327:ILE:HD12	1.75	0.67
1:A:71:ILE:HG22	1:A:71:ILE:O	1.92	0.67
1:A:105:LEU:HD11	1:A:123:MET:CE	2.24	0.67
2:B:207:THR:N	6:B:501:HOH:O	2.21	0.67
1:A:6:ALA:O	1:A:101:HIS:HD2	1.79	0.65
1:A:10:ILE:CG2	1:A:105:LEU:HD23	2.22	0.65
1:A:285:CYS:HB3	1:A:289:ILE:HD11	1.77	0.65
1:A:194:THR:HA	1:A:198:TYR:O	1.97	0.64
2:B:36:LEU:HD11	2:B:75:LEU:CB	2.26	0.64
1:A:192:ILE:HG22	1:A:253:GLU:HG3	1.78	0.64
1:A:71:ILE:HD11	1:A:76:VAL:CG2	2.29	0.63
1:A:367:PRO:O	1:A:370:VAL:HG12	1.98	0.63
1:A:257:CYS:HB3	1:A:258:PRO:HD3	1.79	0.62
1:A:162:THR:HG21	1:A:278:THR:HA	1.81	0.61
2:B:245:THR:HG23	5:B:401:AR6:O2B	2.00	0.61
2:B:325:ARG:HD2	2:B:328:GLN:OE1	2.00	0.61
2:B:125:PHE:CE1	2:B:273:ILE:HD13	2.36	0.60
2:B:184:SER:HB3	2:B:220:ALA:HB3	1.82	0.60
1:A:156:GLY:O	1:A:181:ALA:HB1	2.00	0.60
2:B:161:VAL:HG21	5:B:401:AR6:C1'	2.31	0.60
2:B:246:THR:HB	2:B:295:VAL:HG11	1.82	0.60
1:A:244:ASP:OD1	1:A:246:GLN:HG3	2.02	0.60
1:A:241:GLU:HG3	1:A:247:VAL:HG22	1.83	0.59
2:B:290:SER:O	2:B:294:ASP:HB2	2.02	0.59
5:B:401:AR6:O2D	3:C:42:ARG:HD2	2.02	0.59
1:A:275:HIS:HA	1:A:313:MET:CE	2.33	0.59
1:A:362:TYR:O	1:A:366:GLY:N	2.36	0.59
1:A:137:GLN:HG2	1:A:339:VAL:HG11	1.83	0.58
3:C:36:ILE:HG23	3:C:40:GLN:NE2	2.15	0.58
1:A:186:THR:O	1:A:190:MET:HG3	2.03	0.58
1:A:96:VAL:HG13	1:A:101:HIS:CE1	2.39	0.58
1:A:337:TYR:O	1:A:341:ILE:HG13	2.03	0.58
1:A:275:HIS:HA	1:A:313:MET:HE3	1.86	0.58
1:A:241:GLU:HG3	1:A:247:VAL:CG2	2.34	0.58
1:A:71:ILE:HG12	1:A:82:MET:HE1	1.86	0.57
3:C:2:GLN:OE1	3:C:16:GLU:HG3	2.04	0.57
1:A:14:SER:HA	1:A:71:ILE:HG22	1.85	0.57
2:B:136:LYS:HE3	2:B:142:THR:HA	1.86	0.57
3:C:67:LEU:HD12	3:C:67:LEU:N	2.19	0.57

*Continued on next page...*

*Continued from previous page...*

Atom-1	Atom-2	Interatomic distance (Å)	Clash overlap (Å)
3:C:63:LYS:HG3	3:C:64:GLU:HG2	1.86	0.57
1:A:283:MET:CE	1:A:290:ARG:HD3	2.35	0.56
1:A:147:ARG:NH2	1:A:330:ILE:HG12	2.20	0.56
1:A:163:VAL:HG13	1:A:175:ILE:HG12	1.87	0.56
1:A:206:ARG:HH12	1:A:210:ARG:NH2	2.03	0.56
1:A:8:LEU:HG	1:A:101:HIS:HB3	1.87	0.56
2:B:15:ASP:HA	2:B:83:ARG:HH22	1.70	0.56
1:A:153:MET:HE2	1:A:162:THR:HG23	1.87	0.56
2:B:124:VAL:HG13	2:B:273:ILE:HD11	1.88	0.56
1:A:207:GLU:OE1	1:A:207:GLU:HA	2.07	0.55
2:B:96:LYS:HG3	2:B:221:ILE:HD12	1.88	0.55
1:A:240:TYR:O	1:A:247:VAL:HA	2.06	0.55
2:B:119:GLU:HG2	2:B:272:GLN:HE21	1.71	0.55
1:A:97:ALA:HB3	1:A:100:GLU:CG	2.37	0.55
2:B:179:PRO:HA	3:C:76:GLY:HA3	1.88	0.55
1:A:71:ILE:O	1:A:71:ILE:CG2	2.54	0.55
3:C:9:THR:OG1	3:C:11:LYS:HG2	2.07	0.55
1:A:100:GLU:HB2	1:A:101:HIS:ND1	2.21	0.54
3:C:52:ASP:N	3:C:52:ASP:OD1	2.39	0.54
3:C:2:GLN:N	3:C:63:LYS:HD2	2.22	0.54
1:A:97:ALA:HB3	1:A:100:GLU:HG3	1.90	0.54
2:B:136:LYS:HE3	2:B:142:THR:CA	2.38	0.54
1:A:8:LEU:HG	1:A:101:HIS:CB	2.37	0.54
2:B:183:ARG:HG3	2:B:219:ILE:CG2	2.38	0.54
2:B:154:LYS:HE2	2:B:276:LEU:HD11	1.90	0.53
1:A:278:THR:O	1:A:282:ILE:HG13	2.09	0.53
1:A:10:ILE:CG2	1:A:105:LEU:CD2	2.86	0.53
2:B:161:VAL:HG21	5:B:401:AR6:H1'	1.91	0.53
1:A:329:ILE:N	1:A:329:ILE:HD13	2.24	0.52
2:B:181:LYS:HE3	2:B:241:SER:HB3	1.90	0.52
1:A:242:LEU:HB3	1:A:243:PRO:HD2	1.92	0.52
1:A:192:ILE:HG21	1:A:253:GLU:HG3	1.91	0.52
2:B:117:LYS:HG3	2:B:150:LEU:HD22	1.92	0.52
2:B:55:LYS:O	2:B:56:GLN:HB2	2.11	0.51
2:B:55:LYS:NZ	2:B:316:VAL:HG21	2.26	0.51
1:A:202:THR:OG1	1:A:205:GLU:HG3	2.11	0.50
1:A:117:GLU:HB3	1:A:367:PRO:HB2	1.92	0.50
1:A:163:VAL:HG22	1:A:175:ILE:HG23	1.94	0.50
1:A:330:ILE:HD12	1:A:330:ILE:N	2.27	0.50
1:A:140:LEU:HD22	1:A:343:GLY:HA2	1.93	0.50
3:C:37:PRO:HD2	3:C:40:GLN:NE2	2.26	0.50

*Continued on next page...*

*Continued from previous page...*

Atom-1	Atom-2	Interatomic distance (Å)	Clash overlap (Å)
2:B:111:HIS:O	2:B:115:VAL:HG23	2.11	0.50
1:A:71:ILE:CD1	1:A:76:VAL:HG22	2.35	0.49
2:B:345:GLN:O	2:B:349:LYS:HG3	2.11	0.49
2:B:8:LEU:HG	2:B:8:LEU:O	2.11	0.49
2:B:30:LYS:HD2	2:B:328:GLN:HB3	1.95	0.49
5:B:401:AR6:N6	3:C:49:GLN:CD	2.66	0.49
1:A:239:SER:HB2	1:A:247:VAL:HG13	1.94	0.49
2:B:300:PHE:CZ	2:B:301:LEU:HG	2.48	0.49
1:A:17:CYS:O	1:A:30:VAL:HA	2.12	0.49
2:B:136:LYS:HB2	2:B:140:ALA:HB3	1.93	0.49
3:C:40:GLN:CG	3:C:71:LEU:HD12	2.35	0.49
1:A:295:ALA:O	1:A:328:LYS:HB3	2.13	0.49
2:B:243:SER:O	2:B:295:VAL:HG21	2.12	0.49
1:A:70:PRO:HG2	1:A:82:MET:HE1	1.94	0.48
2:B:133:ASN:HA	2:B:136:LYS:CD	2.43	0.48
1:A:156:GLY:HA2	4:A:401:ANP:H5'1	1.94	0.48
1:A:70:PRO:HB2	1:A:82:MET:CE	2.44	0.48
1:A:210:ARG:HG2	6:A:534:HOH:O	2.13	0.48
1:A:139:VAL:HG22	1:A:165:ILE:HG12	1.94	0.48
2:B:146:GLU:OE1	2:B:148:LYS:HD2	2.14	0.48
2:B:157:ILE:HG12	2:B:277:TRP:HE3	1.79	0.48
2:B:36:LEU:HD22	2:B:76:LEU:HD21	1.94	0.47
2:B:253:LEU:CD1	2:B:274:ILE:HD11	2.44	0.47
1:A:147:ARG:HE	1:A:296:ASN:HD22	1.62	0.47
2:B:150:LEU:O	2:B:154:LYS:HE3	2.14	0.47
3:C:43:LEU:HA	3:C:68:HIS:O	2.14	0.47
2:B:45:PHE:CZ	2:B:65:ILE:HD13	2.50	0.47
1:A:6:ALA:O	1:A:101:HIS:CD2	2.64	0.47
1:A:99:GLU:HA	1:A:128:ASN:O	2.14	0.47
1:A:193:LEU:HD23	1:A:253:GLU:HG2	1.95	0.47
2:B:250:MET:HG3	2:B:301:LEU:HD22	1.95	0.47
2:B:58:TYR:OH	2:B:101:ARG:HD2	2.14	0.47
2:B:122:LEU:HD21	2:B:150:LEU:HA	1.97	0.47
3:C:23:ILE:CB	3:C:52:ASP:HA	2.23	0.47
2:B:147:ILE:HG23	2:B:152:GLU:HB2	1.97	0.47
2:B:44:GLY:HA3	6:B:557:HOH:O	2.14	0.47
1:A:96:VAL:CG1	1:A:101:HIS:CE1	2.99	0.46
1:A:157:ASP:CG	1:A:183:ARG:HD3	2.35	0.46
2:B:178:TYR:O	2:B:181:LYS:HB2	2.15	0.46
2:B:19:LEU:HD11	2:B:27:LEU:HD12	1.97	0.46
1:A:94:LEU:O	1:A:96:VAL:HG23	2.16	0.46

*Continued on next page...*

*Continued from previous page...*

Atom-1	Atom-2	Interatomic distance (Å)	Clash overlap (Å)
1:A:239:SER:HB2	1:A:247:VAL:CG1	2.46	0.46
1:A:316:GLU:O	1:A:320:LEU:HG	2.15	0.46
2:B:157:ILE:HG12	2:B:277:TRP:CE3	2.51	0.46
2:B:289:TYR:CZ	2:B:293:VAL:HG21	2.51	0.46
1:A:304:THR:O	1:A:309:ILE:HG21	2.16	0.46
1:A:124:PHE:O	1:A:128:ASN:HA	2.16	0.46
2:B:161:VAL:HG21	5:B:401:AR6:O4'	2.16	0.45
1:A:123:MET:O	1:A:129:THR:HG23	2.15	0.45
2:B:258:GLU:O	2:B:261:LYS:HE3	2.17	0.45
1:A:328:LYS:HG2	1:A:330:ILE:CD1	2.47	0.45
1:A:10:ILE:HG23	1:A:105:LEU:CD2	2.32	0.45
1:A:178:LEU:HG	1:A:180:LEU:HB3	1.99	0.45
1:A:328:LYS:HG2	1:A:330:ILE:HD11	1.97	0.45
1:A:360:GLN:HG2	1:A:364:GLU:OE2	2.17	0.45
2:B:98:ASN:O	2:B:102:ARG:HG3	2.17	0.45
1:A:190:MET:HE3	1:A:190:MET:HB3	1.84	0.45
1:A:105:LEU:CD1	1:A:123:MET:CE	2.94	0.45
1:A:187:ASP:O	1:A:190:MET:HB2	2.17	0.45
2:B:39:LYS:HB3	2:B:42:PHE:CD2	2.52	0.45
3:C:74:ARG:HA	3:C:74:ARG:HD3	1.71	0.45
2:B:10:ILE:HG13	2:B:31:TYR:HB2	1.98	0.45
2:B:179:PRO:HA	3:C:76:GLY:CA	2.47	0.45
3:C:66:THR:C	3:C:67:LEU:HD12	2.38	0.45
2:B:122:LEU:HA	2:B:125:PHE:HD2	1.82	0.44
2:B:45:PHE:O	2:B:49:ILE:HG12	2.17	0.44
2:B:193:SER:HB2	2:B:201:PRO:HB3	1.99	0.44
1:A:186:THR:HB	1:A:210:ARG:HH21	1.82	0.44
1:A:304:THR:HA	1:A:309:ILE:HD12	2.00	0.44
1:A:118:LYS:HG3	1:A:122:ILE:CD1	2.47	0.44
2:B:39:LYS:HB3	2:B:42:PHE:HD2	1.83	0.44
2:B:58:TYR:O	2:B:62:ILE:HG13	2.18	0.44
1:A:117:GLU:HB3	1:A:367:PRO:CB	2.48	0.43
3:C:2:GLN:HB2	3:C:63:LYS:HE3	2.00	0.43
1:A:102:PRO:HB3	1:A:131:ALA:HB3	2.00	0.43
1:A:218:TYR:O	1:A:258:PRO:HG2	2.18	0.43
2:B:106:THR:HG23	2:B:197:GLY:HA3	2.00	0.43
3:C:2:GLN:H	3:C:63:LYS:HD2	1.83	0.43
3:C:13:ILE:HG23	3:C:33:LYS:HD2	1.99	0.43
1:A:314:GLN:OE1	1:A:327:ILE:HG22	2.18	0.43
2:B:246:THR:O	2:B:250:MET:HG2	2.18	0.43
1:A:104:LEU:HD12	1:A:104:LEU:C	2.39	0.43

*Continued on next page...*

*Continued from previous page...*

Atom-1	Atom-2	Interatomic distance (Å)	Clash overlap (Å)
1:A:251:GLY:O	1:A:254:ARG:HG3	2.19	0.43
1:A:157:ASP:OD1	1:A:183:ARG:HD3	2.19	0.43
1:A:269:MET:HG2	1:A:271:SER:HB2	2.00	0.43
1:A:8:LEU:HD12	1:A:103:VAL:HG22	2.02	0.42
1:A:237:GLU:HA	1:A:250:ILE:O	2.18	0.42
2:B:143:HIS:CD2	2:B:156:PHE:CD1	3.07	0.42
1:A:145:SER:OG	1:A:147:ARG:HD2	2.19	0.42
2:B:312:LEU:HD23	2:B:312:LEU:HA	1.88	0.42
3:C:23:ILE:HA	3:C:26:VAL:HG22	1.99	0.42
1:A:138:ALA:O	1:A:152:VAL:HG21	2.19	0.42
1:A:223:PHE:CD1	1:A:259:GLU:HG2	2.55	0.42
5:B:401:AR6:H5D	5:B:401:AR6:PA	2.58	0.42
1:A:56:ASP:O	1:A:59:GLN:HB3	2.19	0.42
1:A:155:SER:OG	1:A:303:THR:HB	2.19	0.42
1:A:192:ILE:HG23	1:A:256:ARG:NH2	2.35	0.42
2:B:45:PHE:HZ	2:B:65:ILE:HD13	1.85	0.42
2:B:154:LYS:HE3	2:B:154:LYS:HB2	1.37	0.42
2:B:123:SER:O	2:B:127:GLU:HG3	2.20	0.42
1:A:78:ASN:OD1	1:A:81:ASP:N	2.41	0.42
1:A:87:HIS:CE1	1:A:91:TYR:CD2	3.08	0.42
2:B:229:TYR:CG	2:B:242:LEU:HD21	2.55	0.42
1:A:371:HIS:ND1	2:B:207:THR:HB	2.34	0.42
1:A:216:LEU:HA	1:A:216:LEU:HD23	1.63	0.42
1:A:96:VAL:CG1	1:A:101:HIS:ND1	2.83	0.42
2:B:138:GLU:H	2:B:138:GLU:HG3	1.51	0.42
2:B:78:GLU:HA	2:B:81:VAL:HG22	2.02	0.41
2:B:128:LEU:HD11	2:B:252:VAL:HG12	2.02	0.41
1:A:287:VAL:HA	1:A:290:ARG:NE	2.35	0.41
1:A:105:LEU:HD11	1:A:123:MET:HE3	1.97	0.41
1:A:205:GLU:O	1:A:209:VAL:HG23	2.21	0.41
2:B:194:ALA:HB2	2:B:213:VAL:HG22	2.02	0.41
2:B:125:PHE:CD1	2:B:153:ALA:HB1	2.55	0.41
3:C:45:PHE:O	3:C:48:LYS:HG2	2.20	0.41
1:A:137:GLN:HA	1:A:339:VAL:HG13	2.02	0.41
2:B:9:SER:HB2	2:B:332:PHE:CE1	2.56	0.41
1:A:143:TYR:OH	2:B:341:HIS:NE2	2.33	0.41
1:A:218:TYR:O	1:A:255:PHE:HA	2.21	0.41
2:B:55:LYS:HZ3	2:B:316:VAL:HG21	1.85	0.41
2:B:100:SER:HB3	2:B:331:VAL:CG2	2.51	0.41
2:B:136:LYS:HE3	2:B:142:THR:N	2.36	0.41
2:B:183:ARG:HG3	2:B:219:ILE:HG23	2.03	0.41

*Continued on next page...*

Continued from previous page...

Atom-1	Atom-2	Interatomic distance (Å)	Clash overlap (Å)
2:B:26:LEU:HD22	2:B:328:GLN:HG3	2.04	0.40
2:B:267:GLU:HG3	2:B:310:ILE:HA	2.02	0.40
1:A:283:MET:HE1	1:A:290:ARG:HD3	2.02	0.40
1:A:131:ALA:HB1	1:A:356:TRP:HB3	2.04	0.40
2:B:18:LYS:HD2	2:B:18:LYS:HA	1.80	0.40
5:B:401:AR6:C5	3:C:49:GLN:OE1	2.69	0.40
3:C:67:LEU:N	3:C:67:LEU:CD1	2.84	0.40
1:A:97:ALA:HB3	1:A:100:GLU:HG2	2.02	0.40
2:B:221:ILE:HG12	2:B:238:PHE:CD2	2.57	0.40

There are no symmetry-related clashes.

## 5.3 Torsion angles [i](#)

### 5.3.1 Protein backbone [i](#)

In the following table, the Percentiles column shows the percent Ramachandran outliers of the chain as a percentile score with respect to all X-ray entries followed by that with respect to entries of similar resolution.

The Analysed column shows the number of residues for which the backbone conformation was analysed, and the total number of residues.

Mol	Chain	Analysed	Favoured	Allowed	Outliers	Percentiles	
1	A	362/375 (96%)	350 (97%)	12 (3%)	0	100	100
2	B	344/352 (98%)	336 (98%)	8 (2%)	0	100	100
3	C	74/76 (97%)	72 (97%)	2 (3%)	0	100	100
All	All	780/803 (97%)	758 (97%)	22 (3%)	0	100	100

There are no Ramachandran outliers to report.

### 5.3.2 Protein sidechains [i](#)

In the following table, the Percentiles column shows the percent sidechain outliers of the chain as a percentile score with respect to all X-ray entries followed by that with respect to entries of similar resolution.

The Analysed column shows the number of residues for which the sidechain conformation was analysed, and the total number of residues.



Mol	Chain	Analysed	Rotameric	Outliers	Percentiles	
1	A	306/318 (96%)	300 (98%)	6 (2%)	50	74
2	B	320/326 (98%)	305 (95%)	15 (5%)	22	45
3	C	68/68 (100%)	68 (100%)	0	100	100
All	All	694/712 (98%)	673 (97%)	21 (3%)	36	63

All (21) residues with a non-rotameric sidechain are listed below:

Mol	Chain	Res	Type
1	A	16	MET
1	A	160	THR
1	A	179	ASP
1	A	186	THR
1	A	248	ILE
1	A	292	ASP
2	B	33	GLU
2	B	36	LEU
2	B	100	SER
2	B	103	LEU
2	B	108	TYR
2	B	138	GLU
2	B	167	VAL
2	B	168	GLU
2	B	214	ARG
2	B	230	SER
2	B	239	VAL
2	B	246	THR
2	B	249	LEU
2	B	266	ILE
2	B	337	GLN

Sometimes sidechains can be flipped to improve hydrogen bonding and reduce clashes. All (5) such sidechains are listed below:

Mol	Chain	Res	Type
1	A	101	HIS
1	A	296	ASN
2	B	57	ASN
2	B	272	GLN
3	C	40	GLN

### 5.3.3 RNA [i](#)

There are no RNA molecules in this entry.

## 5.4 Non-standard residues in protein, DNA, RNA chains [i](#)

There are no non-standard protein/DNA/RNA residues in this entry.

## 5.5 Carbohydrates [i](#)

There are no oligosaccharides in this entry.

## 5.6 Ligand geometry [i](#)

2 ligands are modelled in this entry.

In the following table, the Counts columns list the number of bonds (or angles) for which Mogul statistics could be retrieved, the number of bonds (or angles) that are observed in the model and the number of bonds (or angles) that are defined in the Chemical Component Dictionary. The Link column lists molecule types, if any, to which the group is linked. The Z score for a bond length (or angle) is the number of standard deviations the observed value is removed from the expected value. A bond length (or angle) with  $|Z| > 2$  is considered an outlier worth inspection. RMSZ is the root-mean-square of all Z scores of the bond lengths (or angles).

Mol	Type	Chain	Res	Link	Bond lengths			Bond angles		
					Counts	RMSZ	# Z  > 2	Counts	RMSZ	# Z  > 2
5	AR6	B	401	-	34,39,39	4.63	15 (44%)	40,60,60	2.44	9 (22%)
4	ANP	A	401	-	29,33,33	4.43	15 (51%)	31,52,52	2.94	6 (19%)

In the following table, the Chirals column lists the number of chiral outliers, the number of chiral centers analysed, the number of these observed in the model and the number defined in the Chemical Component Dictionary. Similar counts are reported in the Torsion and Rings columns. '-' means no outliers of that kind were identified.

Mol	Type	Chain	Res	Link	Chirals	Torsions	Rings
5	AR6	B	401	-	-	5/18/54/54	0/4/4/4
4	ANP	A	401	-	-	6/14/38/38	0/3/3/3

All (30) bond length outliers are listed below:

Mol	Chain	Res	Type	Atoms	Z	Observed(Å)	Ideal(Å)
4	A	401	ANP	O4'-C1'	14.16	1.60	1.41

*Continued on next page...*

*Continued from previous page...*

Mol	Chain	Res	Type	Atoms	Z	Observed(Å)	Ideal(Å)
5	B	401	AR6	O4'-C1'	13.75	1.60	1.41
4	A	401	ANP	C2'-C1'	-13.22	1.33	1.53
5	B	401	AR6	C2'-C1'	-12.64	1.34	1.53
5	B	401	AR6	O4D-C1D	-11.79	1.28	1.43
5	B	401	AR6	O4D-C4D	7.36	1.61	1.45
5	B	401	AR6	C3D-C4D	-6.79	1.35	1.53
4	A	401	ANP	O4'-C4'	-6.58	1.30	1.45
5	B	401	AR6	C3'-C4'	-5.84	1.38	1.53
4	A	401	ANP	PB-O3A	5.53	1.66	1.59
5	B	401	AR6	O4'-C4'	4.49	1.55	1.45
4	A	401	ANP	PG-O1G	4.45	1.53	1.46
5	B	401	AR6	C1D-C2D	4.37	1.57	1.52
5	B	401	AR6	C3'-C2'	3.92	1.64	1.53
4	A	401	ANP	O2'-C2'	3.57	1.51	1.43
4	A	401	ANP	PG-N3B	3.53	1.72	1.63
4	A	401	ANP	PB-N3B	3.46	1.72	1.63
4	A	401	ANP	O3'-C3'	-3.15	1.35	1.43
4	A	401	ANP	C6-N6	2.90	1.44	1.34
5	B	401	AR6	C6-N6	2.81	1.44	1.34
4	A	401	ANP	PB-O1B	2.78	1.50	1.46
5	B	401	AR6	O2D-C2D	-2.61	1.36	1.43
5	B	401	AR6	O3D-C3D	2.60	1.49	1.43
5	B	401	AR6	C2-N3	2.52	1.36	1.32
4	A	401	ANP	C2-N3	2.30	1.35	1.32
5	B	401	AR6	PA-O5'	2.28	1.68	1.59
5	B	401	AR6	C5-C4	-2.23	1.35	1.40
4	A	401	ANP	C5-C4	-2.16	1.35	1.40
4	A	401	ANP	PB-O2B	-2.11	1.51	1.56
4	A	401	ANP	PG-O3G	-2.03	1.51	1.56

All (15) bond angle outliers are listed below:

Mol	Chain	Res	Type	Atoms	Z	Observed(°)	Ideal(°)
4	A	401	ANP	C5-C6-N6	11.70	138.13	120.35
5	B	401	AR6	C1'-N9-C4	-9.70	109.61	126.64
4	A	401	ANP	N6-C6-N1	-7.76	102.47	118.57
5	B	401	AR6	N3-C2-N1	-5.66	119.83	128.68
5	B	401	AR6	C5-C6-N6	5.25	128.33	120.35
4	A	401	ANP	N3-C2-N1	-4.91	121.00	128.68
5	B	401	AR6	C3'-C2'-C1'	4.23	107.34	100.98
5	B	401	AR6	N6-C6-N1	-3.76	110.77	118.57
5	B	401	AR6	O4'-C1'-C2'	-3.69	101.53	106.93

*Continued on next page...*

Continued from previous page...

Mol	Chain	Res	Type	Atoms	Z	Observed(°)	Ideal(°)
4	A	401	ANP	C3'-C2'-C1'	3.44	106.16	100.98
5	B	401	AR6	PB-O3A-PA	-3.24	121.72	132.83
5	B	401	AR6	C2'-C3'-C4'	2.47	107.45	102.64
4	A	401	ANP	PA-O5'-C5'	-2.44	107.38	121.68
4	A	401	ANP	O3A-PB-N3B	2.10	112.42	106.59
5	B	401	AR6	O1D-C1D-O4D	-2.01	108.56	111.13

There are no chirality outliers.

All (11) torsion outliers are listed below:

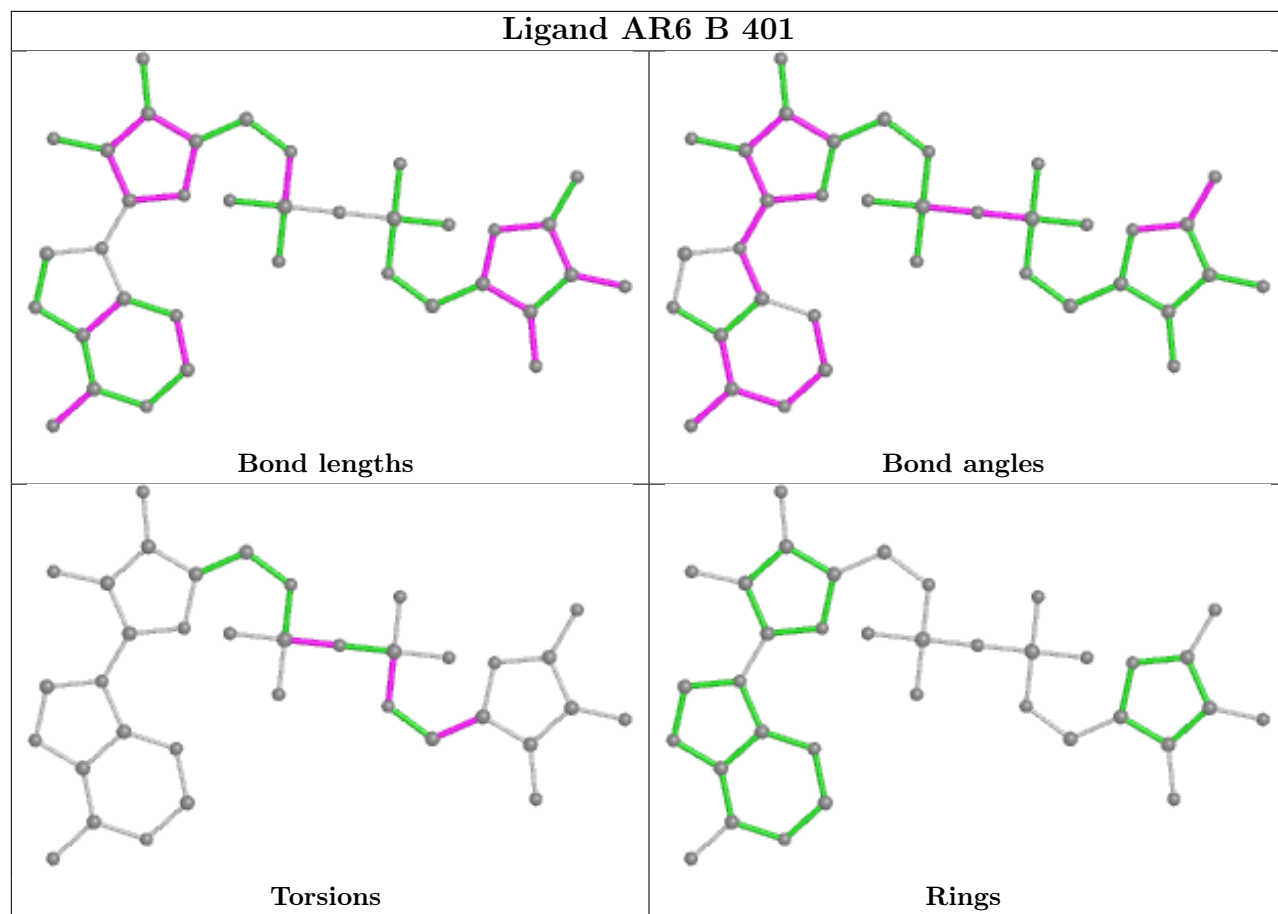
Mol	Chain	Res	Type	Atoms
4	A	401	ANP	PG-N3B-PB-O1B
4	A	401	ANP	PG-N3B-PB-O3A
4	A	401	ANP	C5'-O5'-PA-O1A
5	B	401	AR6	C3D-C4D-C5D-O5D
5	B	401	AR6	O4D-C4D-C5D-O5D
5	B	401	AR6	PB-O3A-PA-O5'
4	A	401	ANP	C5'-O5'-PA-O3A
4	A	401	ANP	PB-O3A-PA-O2A
4	A	401	ANP	PB-O3A-PA-O1A
5	B	401	AR6	PB-O3A-PA-O2A
5	B	401	AR6	C5D-O5D-PB-O2B

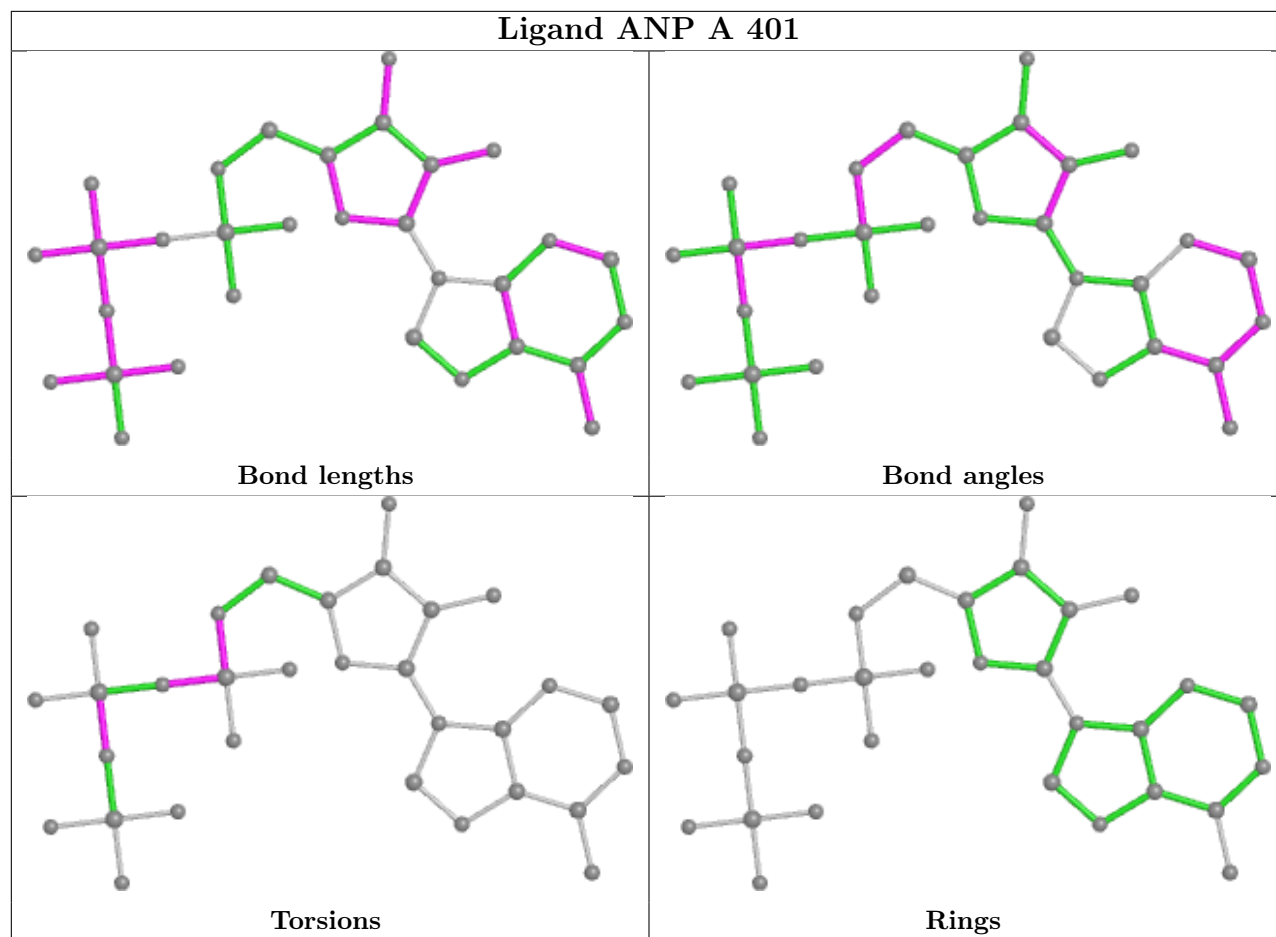
There are no ring outliers.

2 monomers are involved in 10 short contacts:

Mol	Chain	Res	Type	Clashes	Symm-Clashes
5	B	401	AR6	9	0
4	A	401	ANP	1	0

The following is a two-dimensional graphical depiction of Mogul quality analysis of bond lengths, bond angles, torsion angles, and ring geometry for all instances of the Ligand of Interest. In addition, ligands with molecular weight > 250 and outliers as shown on the validation Tables will also be included. For torsion angles, if less than 5% of the Mogul distribution of torsion angles is within 10 degrees of the torsion angle in question, then that torsion angle is considered an outlier. Any bond that is central to one or more torsion angles identified as an outlier by Mogul will be highlighted in the graph. For rings, the root-mean-square deviation (RMSD) between the ring in question and similar rings identified by Mogul is calculated over all ring torsion angles. If the average RMSD is greater than 60 degrees and the minimal RMSD between the ring in question and any Mogul-identified rings is also greater than 60 degrees, then that ring is considered an outlier. The outliers are highlighted in purple. The color gray indicates Mogul did not find sufficient equivalents in the CSD to analyse the geometry.





## 5.7 Other polymers [i](#)

There are no such residues in this entry.

## 5.8 Polymer linkage issues [i](#)

There are no chain breaks in this entry.

## 6 Fit of model and data

### 6.1 Protein, DNA and RNA chains

In the following table, the column labelled ‘#RSRZ > 2’ contains the number (and percentage) of RSRZ outliers, followed by percent RSRZ outliers for the chain as percentile scores relative to all X-ray entries and entries of similar resolution. The OWAB column contains the minimum, median, 95<sup>th</sup> percentile and maximum values of the occupancy-weighted average B-factor per residue. The column labelled ‘Q < 0.9’ lists the number of (and percentage) of residues with an average occupancy less than 0.9.

Mol	Chain	Analysed	<RSRZ>	#RSRZ>2	OWAB(Å <sup>2</sup> )	Q<0.9
1	A	366/375 (97%)	0.59	20 (5%) 32 26	19, 36, 59, 88	0
2	B	346/352 (98%)	0.80	39 (11%) 11 9	20, 42, 74, 115	0
3	C	76/76 (100%)	1.07	14 (18%) 4 3	26, 51, 78, 83	0
All	All	788/803 (98%)	0.73	73 (9%) 16 13	19, 40, 70, 115	0

All (73) RSRZ outliers are listed below:

Mol	Chain	Res	Type	RSRZ
2	B	97	ASP	4.9
1	A	271	SER	4.5
1	A	51	ASP	4.2
2	B	168	GLU	3.9
2	B	79	GLN	3.7
2	B	38	LYS	3.7
3	C	49	GLN	3.6
2	B	75	LEU	3.6
2	B	33	GLU	3.5
1	A	241	GLU	3.4
2	B	73	GLU	3.4
2	B	36	LEU	3.2
3	C	9	THR	3.2
1	A	69	TYR	3.2
1	A	157	ASP	3.1
3	C	57	SER	3.1
2	B	166	ASN	3.0
2	B	7	GLU	3.0
2	B	18	LYS	2.8
1	A	17	CYS	2.8
2	B	318	ASP	2.8
1	A	25	ASP	2.8
3	C	46	ALA	2.7

*Continued on next page...*

*Continued from previous page...*

<b>Mol</b>	<b>Chain</b>	<b>Res</b>	<b>Type</b>	<b>RSRZ</b>
3	C	73	LEU	2.7
3	C	76	GLY	2.7
2	B	151	ASP	2.6
2	B	306	ASP	2.6
3	C	74	ARG	2.6
1	A	195	GLU	2.6
2	B	46	PHE	2.6
2	B	288	SER	2.6
1	A	12	ASN	2.5
1	A	272	CYS	2.5
2	B	95	PRO	2.5
3	C	42	ARG	2.5
2	B	57	ASN	2.5
2	B	348	PHE	2.5
3	C	63	LYS	2.5
3	C	75	GLY	2.5
2	B	69	CYS	2.5
2	B	334	LEU	2.4
1	A	16	MET	2.4
1	A	10	ILE	2.4
2	B	44	GLY	2.4
2	B	255	ASP	2.4
2	B	12	LEU	2.3
2	B	78	GLU	2.3
2	B	244	GLY	2.3
3	C	39	ASP	2.3
2	B	144	GLU	2.3
2	B	122	LEU	2.3
2	B	41	GLU	2.2
3	C	1	MET	2.2
2	B	8	LEU	2.2
1	A	324	THR	2.2
1	A	103	VAL	2.1
1	A	267	LEU	2.1
1	A	72	GLU	2.1
2	B	245	THR	2.1
1	A	166	TYR	2.1
2	B	319	ASP	2.1
3	C	62	GLN	2.1
2	B	188	LEU	2.1
2	B	120	SER	2.1
2	B	350	ASN	2.1

*Continued on next page...*



*Continued from previous page...*

Mol	Chain	Res	Type	RSRZ
1	A	228	ALA	2.1
2	B	138	GLU	2.0
3	C	61	ILE	2.0
2	B	87	VAL	2.0
1	A	236	LEU	2.0
1	A	363	ASP	2.0
2	B	264	LYS	2.0
2	B	242	LEU	2.0

## 6.2 Non-standard residues in protein, DNA, RNA chains [i](#)

There are no non-standard protein/DNA/RNA residues in this entry.

## 6.3 Carbohydrates [i](#)

There are no monosaccharides in this entry.

## 6.4 Ligands [i](#)

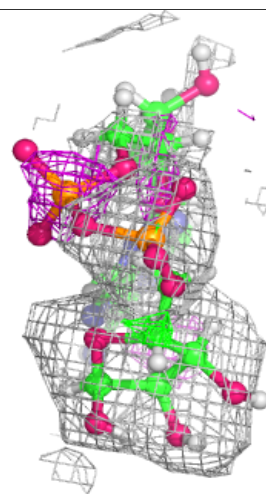
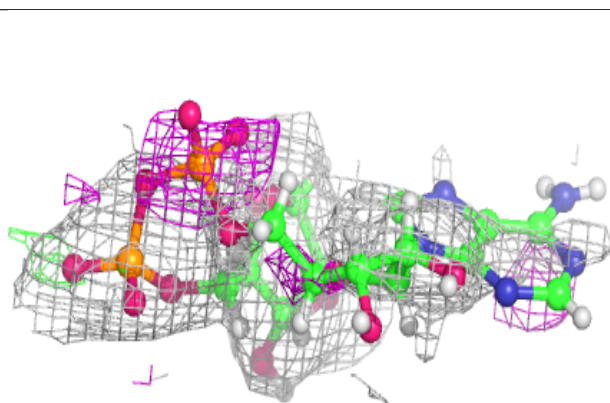
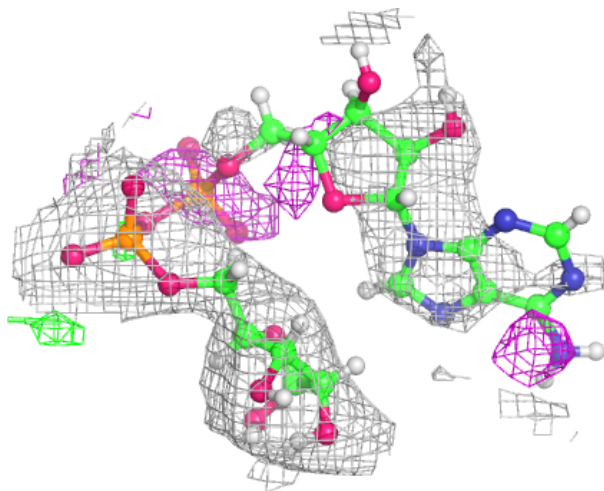
In the following table, the Atoms column lists the number of modelled atoms in the group and the number defined in the chemical component dictionary. The B-factors column lists the minimum, median, 95<sup>th</sup> percentile and maximum values of B factors of atoms in the group. The column labelled 'Q< 0.9' lists the number of atoms with occupancy less than 0.9.

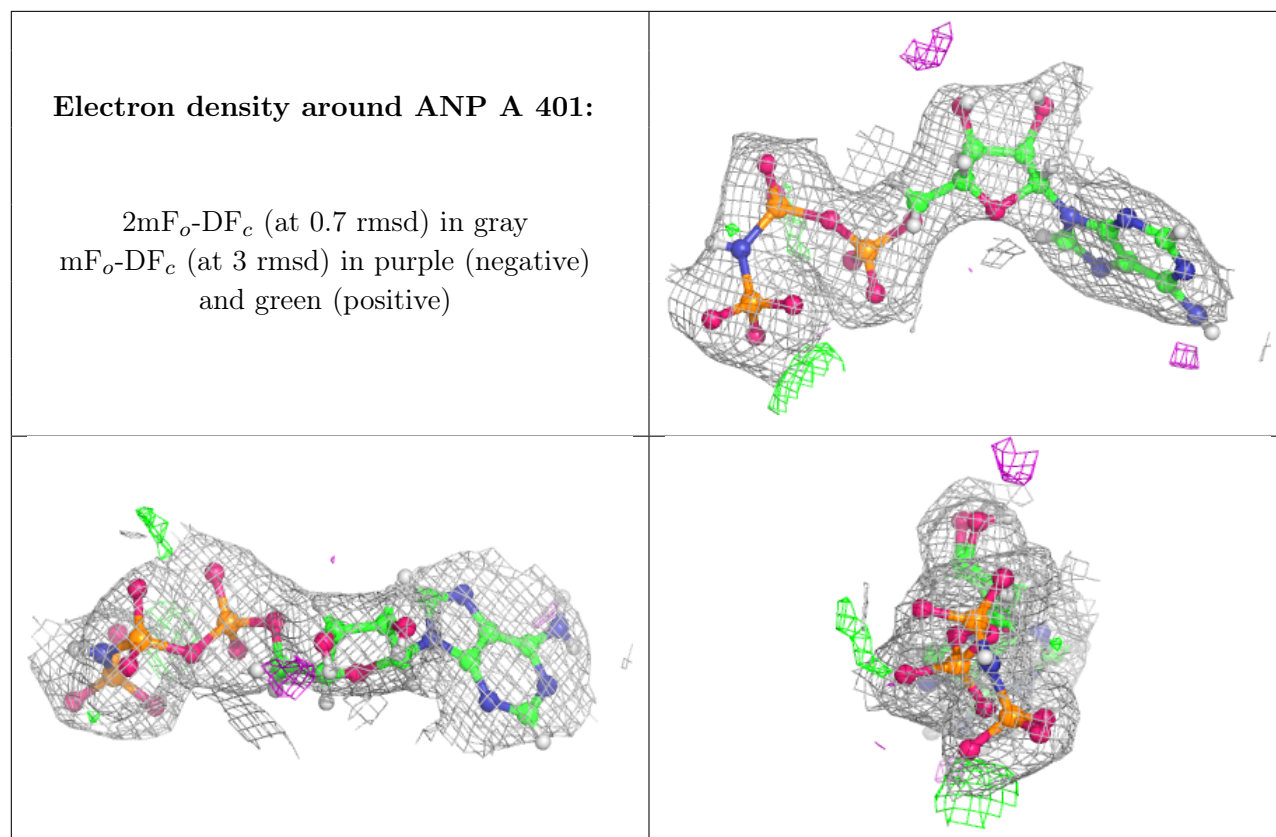
Mol	Type	Chain	Res	Atoms	RSCC	RSR	B-factors(Å <sup>2</sup> )	Q<0.9
5	AR6	B	401	36/36	0.75	0.22	50,93,133,142	0
4	ANP	A	401	31/31	0.94	0.10	27,35,61,65	0

The following is a graphical depiction of the model fit to experimental electron density of all instances of the Ligand of Interest. In addition, ligands with molecular weight > 250 and outliers as shown on the geometry validation Tables will also be included. Each fit is shown from different orientation to approximate a three-dimensional view.

**Electron density around AR6 B 401:**

$2mF_o-DF_c$  (at 0.7 rmsd) in gray  
 $mF_o-DF_c$  (at 3 rmsd) in purple (negative)  
and green (positive)





## 6.5 Other polymers [i](#)

There are no such residues in this entry.