



## wwPDB EM Validation Summary Report ⓘ

Jan 21, 2025 – 02:11 PM JST

PDB ID : 8K7T  
EMDB ID : EMD-36941  
Title : Mouse Fc epsilon RI in complex with mIgE Fc  
Authors : Zhang, Z.; Yui, M.; Ohto, U.; Shimizu, T.  
Deposited on : 2023-07-27  
Resolution : 3.71 Å (reported)

This is a wwPDB EM Validation Summary Report for a publicly released PDB entry.

We welcome your comments at [validation@mail.wwpdb.org](mailto:validation@mail.wwpdb.org)

A user guide is available at

<https://www.wwpdb.org/validation/2017/EMValidationReportHelp>

with specific help available everywhere you see the ⓘ symbol.

The types of validation reports are described at

<http://www.wwpdb.org/validation/2017/FAQs#types>.

---

The following versions of software and data (see [references ⓘ](#)) were used in the production of this report:

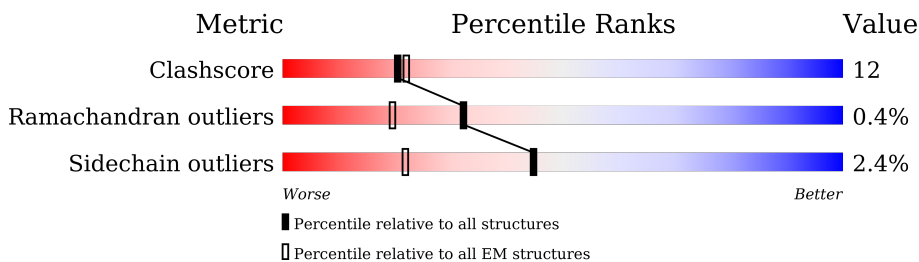
EMDB validation analysis : 0.0.1.dev113  
Mogul : 1.8.5 (274361), CSD as541be (2020)  
MolProbity : 4.02b-467  
Percentile statistics : 20231227.v01 (using entries in the PDB archive December 27th 2023)  
MapQ : 1.9.13  
Ideal geometry (proteins) : Engh & Huber (2001)  
Ideal geometry (DNA, RNA) : Parkinson et al. (1996)  
Validation Pipeline (wwPDB-VP) : 2.40

# 1 Overall quality at a glance i

The following experimental techniques were used to determine the structure:  
*ELECTRON MICROSCOPY*

The reported resolution of this entry is 3.71 Å.

Percentile scores (ranging between 0-100) for global validation metrics of the entry are shown in the following graphic. The table shows the number of entries on which the scores are based.



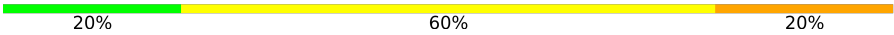

Metric	Whole archive (#Entries)	EM structures (#Entries)
Clashscore	210492	15764
Ramachandran outliers	207382	16835
Sidechain outliers	206894	16415

The table below summarises the geometric issues observed across the polymeric chains and their fit to the map. The red, orange, yellow and green segments of the bar indicate the fraction of residues that contain outliers for  $\geq 3$ , 2, 1 and 0 types of geometric quality criteria respectively. A grey segment represents the fraction of residues that are not modelled. The numeric value for each fraction is indicated below the corresponding segment, with a dot representing fractions  $\leq 5\%$ . The upper red bar (where present) indicates the fraction of residues that have poor fit to the EM map (all-atom inclusion  $< 40\%$ ). The numeric value is given above the bar.

Mol	Chain	Length	Quality of chain
1	A	273	
2	G	104	
2	H	104	
3	B	245	
4	E	356	
4	F	356	
5	C	3	
5	D	3	

*Continued on next page...*

*Continued from previous page...*

Mol	Chain	Length	Quality of chain
6	I	5	 20% 60% 20%
6	J	5	 40% 60%

## 2 Entry composition

There are 7 unique types of molecules in this entry. The entry contains 8948 atoms, of which 0 are hydrogens and 0 are deuteriums.

In the tables below, the AltConf column contains the number of residues with at least one atom in alternate conformation and the Trace column contains the number of residues modelled with at most 2 atoms.

- Molecule 1 is a protein called High affinity immunoglobulin epsilon receptor subunit alpha.

Mol	Chain	Residues	Atoms					AltConf	Trace
			Total	C	N	O	S		
1	A	214	1743	1127	293	316	7	0	0

There are 23 discrepancies between the modelled and reference sequences:

Chain	Residue	Modelled	Actual	Comment	Reference
A	251	GLU	-	expression tag	UNP P20489
A	252	ASN	-	expression tag	UNP P20489
A	253	LEU	-	expression tag	UNP P20489
A	254	TYR	-	expression tag	UNP P20489
A	255	PHE	-	expression tag	UNP P20489
A	256	GLN	-	expression tag	UNP P20489
A	257	GLY	-	expression tag	UNP P20489
A	258	ASP	-	expression tag	UNP P20489
A	259	TYR	-	expression tag	UNP P20489
A	260	LYS	-	expression tag	UNP P20489
A	261	ASP	-	expression tag	UNP P20489
A	262	ASP	-	expression tag	UNP P20489
A	263	ASP	-	expression tag	UNP P20489
A	264	ASP	-	expression tag	UNP P20489
A	265	LYS	-	expression tag	UNP P20489
A	266	HIS	-	expression tag	UNP P20489
A	267	HIS	-	expression tag	UNP P20489
A	268	HIS	-	expression tag	UNP P20489
A	269	HIS	-	expression tag	UNP P20489
A	270	HIS	-	expression tag	UNP P20489
A	271	HIS	-	expression tag	UNP P20489
A	272	HIS	-	expression tag	UNP P20489
A	273	HIS	-	expression tag	UNP P20489

- Molecule 2 is a protein called High affinity immunoglobulin epsilon receptor subunit gamma.

Mol	Chain	Residues	Atoms					AltConf	Trace
2	G	37	Total	C	N	O	S	0	0
			297	199	50	46	2		
2	H	43	Total	C	N	O	S	0	0
			341	224	57	58	2		

There are 36 discrepancies between the modelled and reference sequences:

Chain	Residue	Modelled	Actual	Comment	Reference
G	87	TRP	-	expression tag	UNP P20491
G	88	SER	-	expression tag	UNP P20491
G	89	HIS	-	expression tag	UNP P20491
G	90	PRO	-	expression tag	UNP P20491
G	91	GLN	-	expression tag	UNP P20491
G	92	PHE	-	expression tag	UNP P20491
G	93	GLU	-	expression tag	UNP P20491
G	94	LYS	-	expression tag	UNP P20491
G	95	GLU	-	expression tag	UNP P20491
G	96	GLN	-	expression tag	UNP P20491
G	97	LYS	-	expression tag	UNP P20491
G	98	LEU	-	expression tag	UNP P20491
G	99	ILE	-	expression tag	UNP P20491
G	100	SER	-	expression tag	UNP P20491
G	101	GLU	-	expression tag	UNP P20491
G	102	GLU	-	expression tag	UNP P20491
G	103	ASP	-	expression tag	UNP P20491
G	104	LEU	-	expression tag	UNP P20491
H	87	TRP	-	expression tag	UNP P20491
H	88	SER	-	expression tag	UNP P20491
H	89	HIS	-	expression tag	UNP P20491
H	90	PRO	-	expression tag	UNP P20491
H	91	GLN	-	expression tag	UNP P20491
H	92	PHE	-	expression tag	UNP P20491
H	93	GLU	-	expression tag	UNP P20491
H	94	LYS	-	expression tag	UNP P20491
H	95	GLU	-	expression tag	UNP P20491
H	96	GLN	-	expression tag	UNP P20491
H	97	LYS	-	expression tag	UNP P20491
H	98	LEU	-	expression tag	UNP P20491
H	99	ILE	-	expression tag	UNP P20491
H	100	SER	-	expression tag	UNP P20491
H	101	GLU	-	expression tag	UNP P20491
H	102	GLU	-	expression tag	UNP P20491
H	103	ASP	-	expression tag	UNP P20491
H	104	LEU	-	expression tag	UNP P20491

- Molecule 3 is a protein called High affinity immunoglobulin epsilon receptor subunit beta.

Mol	Chain	Residues	Atoms					AltConf	Trace
			Total	C	N	O	S		
3	B	160	1247	824	190	223	10	0	0

There are 10 discrepancies between the modelled and reference sequences:

Chain	Residue	Modelled	Actual	Comment	Reference
B	236	GLU	-	expression tag	UNP P20490
B	237	GLN	-	expression tag	UNP P20490
B	238	LYS	-	expression tag	UNP P20490
B	239	LEU	-	expression tag	UNP P20490
B	240	ILE	-	expression tag	UNP P20490
B	241	SER	-	expression tag	UNP P20490
B	242	GLU	-	expression tag	UNP P20490
B	243	GLU	-	expression tag	UNP P20490
B	244	ASP	-	expression tag	UNP P20490
B	245	LEU	-	expression tag	UNP P20490

- Molecule 4 is a protein called IgE Fc.

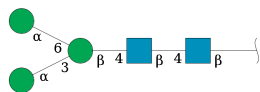
Mol	Chain	Residues	Atoms					AltConf	Trace
			Total	C	N	O	S		
4	E	315	2511	1590	423	487	11	0	0
4	F	315	2511	1590	423	487	11	0	0

- Molecule 5 is an oligosaccharide called beta-D-mannopyranose-(1-4)-2-acetamido-2-deoxy-beta-D-glucopyranose-(1-4)-2-acetamido-2-deoxy-beta-D-glucopyranose.



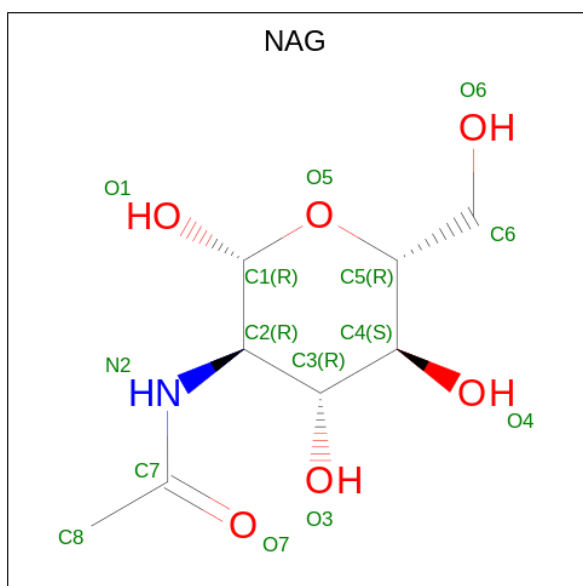
Mol	Chain	Residues	Atoms				AltConf	Trace
			Total	C	N	O		
5	C	3	39	22	2	15	0	0
5	D	3	39	22	2	15	0	0

- Molecule 6 is an oligosaccharide called alpha-D-mannopyranose-(1-3)-[alpha-D-mannopyranose-(1-6)]beta-D-mannopyranose-(1-4)-2-acetamido-2-deoxy-beta-D-glucopyranose-(1-4)-2-acetamido-2-deoxy-beta-D-glucopyranose.



Mol	Chain	Residues	Atoms				AltConf	Trace
			Total	C	N	O		
6	I	5	61	34	2	25	0	0
6	J	5	61	34	2	25	0	0

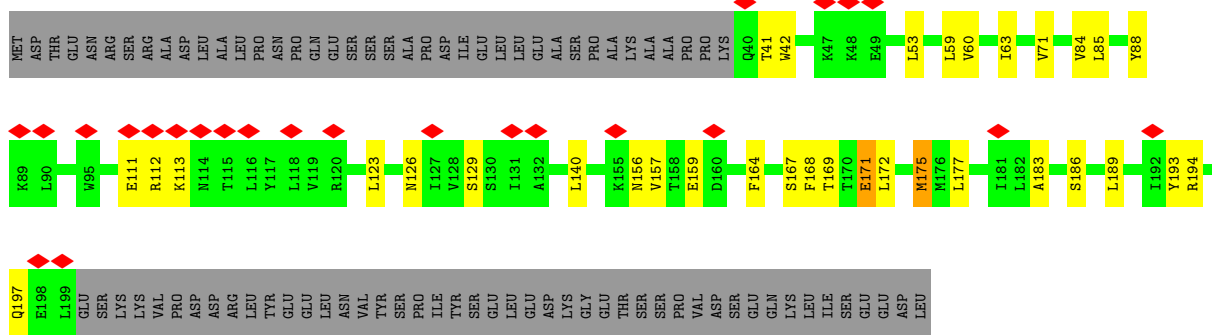
- Molecule 7 is 2-acetamido-2-deoxy-beta-D-glucopyranose (three-letter code: NAG) (formula:  $C_8H_{15}NO_6$ ).



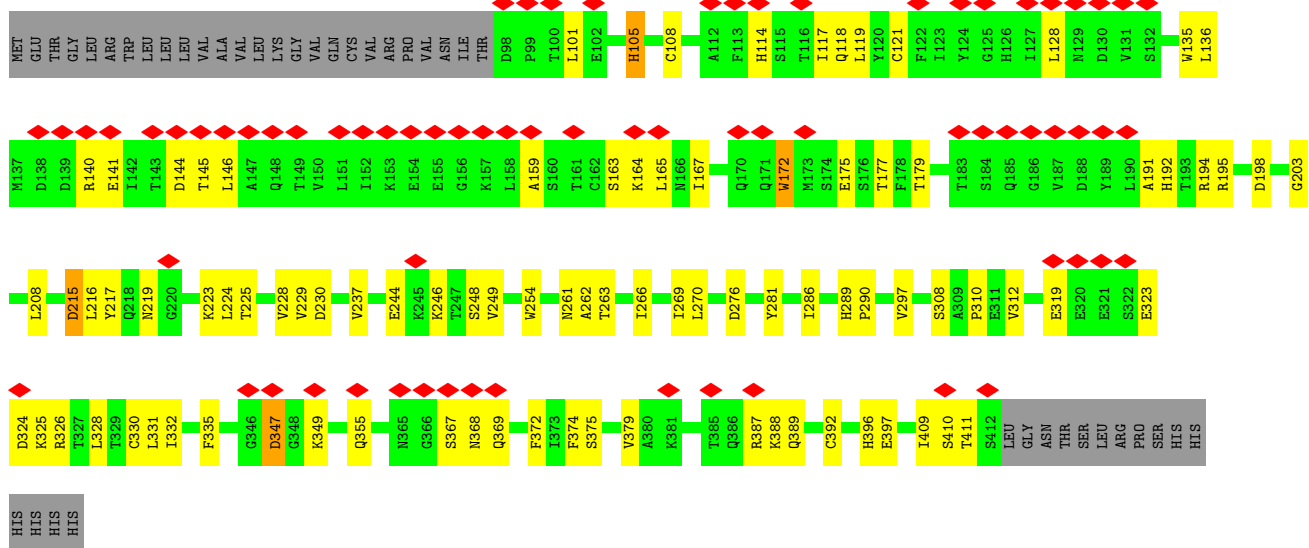
Mol	Chain	Residues	Atoms				AltConf
			Total	C	N	O	
7	A	1	14	8	1	5	0
7	A	1	14	8	1	5	0
7	A	1	14	8	1	5	0
7	E	1	14	8	1	5	0
7	E	1	14	8	1	5	0
7	F	1	14	8	1	5	0
7	F	1	14	8	1	5	0



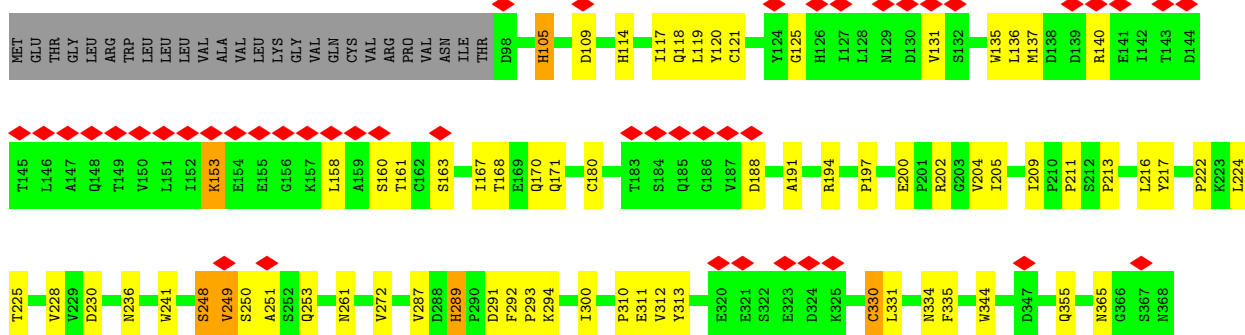


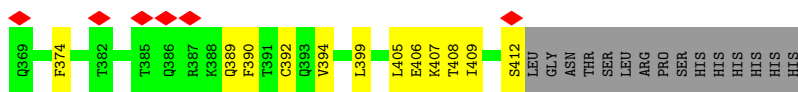


• Molecule 4: IgE Fc



• Molecule 4: IgE Fc





- Molecule 5: beta-D-mannopyranose-(1-4)-2-acetamido-2-deoxy-beta-D-glucopyranose-(1-4)-2-acetamido-2-deoxy-beta-D-glucopyranose



- Molecule 5: beta-D-mannopyranose-(1-4)-2-acetamido-2-deoxy-beta-D-glucopyranose-(1-4)-2-acetamido-2-deoxy-beta-D-glucopyranose



- Molecule 6: alpha-D-mannopyranose-(1-3)-[alpha-D-mannopyranose-(1-6)]beta-D-mannopyranose-(1-4)-2-acetamido-2-deoxy-beta-D-glucopyranose-(1-4)-2-acetamido-2-deoxy-beta-D-glucopyranose



- Molecule 6: alpha-D-mannopyranose-(1-3)-[alpha-D-mannopyranose-(1-6)]beta-D-mannopyranose-(1-4)-2-acetamido-2-deoxy-beta-D-glucopyranose-(1-4)-2-acetamido-2-deoxy-beta-D-glucopyranose



## 4 Experimental information

Property	Value	Source
EM reconstruction method	SINGLE PARTICLE	Depositor
Imposed symmetry	POINT, Not provided	
Number of particles used	91911	Depositor
Resolution determination method	FSC 0.143 CUT-OFF	Depositor
CTF correction method	NONE	Depositor
Microscope	TFS KRIOS	Depositor
Voltage (kV)	300	Depositor
Electron dose ( $e^-/\text{\AA}^2$ )	61	Depositor
Minimum defocus (nm)	800	Depositor
Maximum defocus (nm)	2000	Depositor
Magnification	Not provided	
Image detector	GATAN K3 BIOQUANTUM (6k x 4k)	Depositor
Maximum map value	6.421	Depositor
Minimum map value	-4.988	Depositor
Average map value	0.001	Depositor
Map value standard deviation	0.124	Depositor
Recommended contour level	1	Depositor
Map size ( $\text{\AA}$ )	298.8, 298.8, 298.8	wwPDB
Map dimensions	240, 240, 240	wwPDB
Map angles ( $^\circ$ )	90.0, 90.0, 90.0	wwPDB
Pixel spacing ( $\text{\AA}$ )	1.245, 1.245, 1.245	Depositor

## 5 Model quality

### 5.1 Standard geometry

Bond lengths and bond angles in the following residue types are not validated in this section: BMA, MAN, NAG

The Z score for a bond length (or angle) is the number of standard deviations the observed value is removed from the expected value. A bond length (or angle) with  $|Z| > 5$  is considered an outlier worth inspection. RMSZ is the root-mean-square of all Z scores of the bond lengths (or angles).

Mol	Chain	Bond lengths		Bond angles	
		RMSZ	# Z  >5	RMSZ	# Z  >5
1	A	0.31	0/1787	0.57	1/2426 (0.0%)
2	G	0.23	0/301	0.47	0/406
2	H	0.26	0/345	0.55	0/465
3	B	0.32	0/1270	0.52	2/1723 (0.1%)
4	E	0.26	0/2574	0.55	1/3509 (0.0%)
4	F	0.25	0/2574	0.52	1/3509 (0.0%)
All	All	0.28	0/8851	0.54	5/12038 (0.0%)

There are no bond length outliers.

All (5) bond angle outliers are listed below:

Mol	Chain	Res	Type	Atoms	Z	Observed(°)	Ideal(°)
4	E	347	ASP	CB-CG-OD1	6.73	124.36	118.30
3	B	171	GLU	CB-CG-CD	-6.58	96.42	114.20
1	A	179	ARG	CB-CA-C	6.53	123.45	110.40
4	F	188	ASP	CB-CG-OD1	5.08	122.87	118.30
3	B	175	MET	CB-CG-SD	-5.00	97.39	112.40

There are no chirality outliers.

There are no planarity outliers.

### 5.2 Too-close contacts

In the following table, the Non-H and H(model) columns list the number of non-hydrogen atoms and hydrogen atoms in the chain respectively. The H(added) column lists the number of hydrogen atoms added and optimized by MolProbity. The Clashes column lists the number of clashes within the asymmetric unit, whereas Symm-Clashes lists symmetry-related clashes.

Mol	Chain	Non-H	H(model)	H(added)	Clashes	Symm-Clashes
1	A	1743	0	1731	71	0
2	G	297	0	331	8	0
2	H	341	0	367	9	0
3	B	1247	0	1280	30	0
4	E	2511	0	2457	69	0
4	F	2511	0	2457	61	0
5	C	39	0	34	0	0
5	D	39	0	34	0	0
6	I	61	0	52	5	0
6	J	61	0	52	2	0
7	A	42	0	39	1	0
7	E	28	0	26	0	0
7	F	28	0	26	2	0
All	All	8948	0	8886	212	0

The all-atom clashscore is defined as the number of clashes found per 1000 atoms (including hydrogen atoms). The all-atom clashscore for this structure is 12.

The worst 5 of 212 close contacts within the same asymmetric unit are listed below, sorted by their clash magnitude.

Atom-1	Atom-2	Interatomic distance (Å)	Clash overlap (Å)
1:A:143:ILE:HD11	6:I:1:NAG:H82	1.03	1.03
3:B:175:MET:HE2	3:B:175:MET:H	1.29	0.95
1:A:143:ILE:HD11	6:I:1:NAG:C8	1.98	0.94
1:A:211:VAL:HG13	1:A:215:PHE:CD2	2.04	0.93
1:A:153:TYR:HB3	4:E:262:ALA:O	1.69	0.93

There are no symmetry-related clashes.

## 5.3 Torsion angles [i](#)

### 5.3.1 Protein backbone [i](#)

In the following table, the Percentiles column shows the percent Ramachandran outliers of the chain as a percentile score with respect to all PDB entries followed by that with respect to all EM entries.

The Analysed column shows the number of residues for which the backbone conformation was analysed, and the total number of residues.

Mol	Chain	Analysed	Favoured	Allowed	Outliers	Percentiles	
1	A	212/273 (78%)	198 (93%)	12 (6%)	2 (1%)	14	46
2	G	35/104 (34%)	35 (100%)	0	0	100	100
2	H	41/104 (39%)	40 (98%)	1 (2%)	0	100	100
3	B	158/245 (64%)	150 (95%)	7 (4%)	1 (1%)	22	54
4	E	313/356 (88%)	292 (93%)	21 (7%)	0	100	100
4	F	313/356 (88%)	287 (92%)	25 (8%)	1 (0%)	37	67
All	All	1072/1438 (74%)	1002 (94%)	66 (6%)	4 (0%)	32	62

All (4) Ramachandran outliers are listed below:

Mol	Chain	Res	Type
1	A	199	LYS
4	F	249	VAL
1	A	179	ARG
3	B	157	VAL

### 5.3.2 Protein sidechains [i](#)

In the following table, the Percentiles column shows the percent sidechain outliers of the chain as a percentile score with respect to all PDB entries followed by that with respect to all EM entries.

The Analysed column shows the number of residues for which the sidechain conformation was analysed, and the total number of residues.

Mol	Chain	Analysed	Rotameric	Outliers	Percentiles	
1	A	195/249 (78%)	191 (98%)	4 (2%)	48	67
2	G	32/91 (35%)	32 (100%)	0	100	100
2	H	36/91 (40%)	34 (94%)	2 (6%)	17	45
3	B	138/215 (64%)	138 (100%)	0	100	100
4	E	292/329 (89%)	285 (98%)	7 (2%)	44	64
4	F	292/329 (89%)	281 (96%)	11 (4%)	28	53
All	All	985/1304 (76%)	961 (98%)	24 (2%)	45	64

5 of 24 residues with a non-rotameric sidechain are listed below:

Mol	Chain	Res	Type
4	F	140	ARG

*Continued on next page...*

*Continued from previous page...*

Mol	Chain	Res	Type
4	F	241	TRP
4	F	236	ASN
4	F	248	SER
4	E	105	HIS

Sometimes sidechains can be flipped to improve hydrogen bonding and reduce clashes. All (5) such sidechains are listed below:

Mol	Chain	Res	Type
3	B	197	GLN
4	E	105	HIS
4	E	389	GLN
4	E	396	HIS
4	F	118	GLN

### 5.3.3 RNA [i](#)

There are no RNA molecules in this entry.

### 5.4 Non-standard residues in protein, DNA, RNA chains [i](#)

There are no non-standard protein/DNA/RNA residues in this entry.

### 5.5 Carbohydrates [i](#)

16 monosaccharides are modelled in this entry.

In the following table, the Counts columns list the number of bonds (or angles) for which Mogul statistics could be retrieved, the number of bonds (or angles) that are observed in the model and the number of bonds (or angles) that are defined in the Chemical Component Dictionary. The Link column lists molecule types, if any, to which the group is linked. The Z score for a bond length (or angle) is the number of standard deviations the observed value is removed from the expected value. A bond length (or angle) with  $|Z| > 2$  is considered an outlier worth inspection. RMSZ is the root-mean-square of all Z scores of the bond lengths (or angles).

Mol	Type	Chain	Res	Link	Bond lengths			Bond angles		
					Counts	RMSZ	# $ Z  > 2$	Counts	RMSZ	# $ Z  > 2$
5	NAG	C	1	5,1	14,14,15	0.35	0	17,19,21	0.64	1 (5%)
5	NAG	C	2	5	14,14,15	1.02	1 (7%)	17,19,21	1.33	1 (5%)
5	BMA	C	3	5	11,11,12	0.65	0	15,15,17	0.71	0
5	NAG	D	1	5,1	14,14,15	0.23	0	17,19,21	0.51	0

Mol	Type	Chain	Res	Link	Bond lengths			Bond angles		
					Counts	RMSZ	# Z  > 2	Counts	RMSZ	# Z  > 2
5	NAG	D	2	5	14,14,15	0.22	0	17,19,21	0.46	0
5	BMA	D	3	5	11,11,12	0.58	0	15,15,17	0.76	0
6	NAG	I	1	4,6	14,14,15	0.37	0	17,19,21	0.63	1 (5%)
6	NAG	I	2	6	14,14,15	0.27	0	17,19,21	0.40	0
6	BMA	I	3	6	11,11,12	0.62	0	15,15,17	0.78	0
6	MAN	I	4	6	11,11,12	0.68	0	15,15,17	1.02	2 (13%)
6	MAN	I	5	6	11,11,12	0.66	0	15,15,17	1.03	2 (13%)
6	NAG	J	1	4,6	14,14,15	0.30	0	17,19,21	0.40	0
6	NAG	J	2	6	14,14,15	0.25	0	17,19,21	0.45	0
6	BMA	J	3	6	11,11,12	0.63	0	15,15,17	0.83	0
6	MAN	J	4	6	11,11,12	0.71	0	15,15,17	1.02	2 (13%)
6	MAN	J	5	6	11,11,12	0.63	0	15,15,17	1.02	2 (13%)

In the following table, the Chirals column lists the number of chiral outliers, the number of chiral centers analysed, the number of these observed in the model and the number defined in the Chemical Component Dictionary. Similar counts are reported in the Torsion and Rings columns. '-' means no outliers of that kind were identified.

Mol	Type	Chain	Res	Link	Chirals	Torsions	Rings
5	NAG	C	1	5,1	-	2/6/23/26	0/1/1/1
5	NAG	C	2	5	-	1/6/23/26	0/1/1/1
5	BMA	C	3	5	-	0/2/19/22	0/1/1/1
5	NAG	D	1	5,1	-	3/6/23/26	0/1/1/1
5	NAG	D	2	5	-	2/6/23/26	0/1/1/1
5	BMA	D	3	5	-	1/2/19/22	0/1/1/1
6	NAG	I	1	4,6	-	2/6/23/26	0/1/1/1
6	NAG	I	2	6	-	0/6/23/26	0/1/1/1
6	BMA	I	3	6	-	0/2/19/22	0/1/1/1
6	MAN	I	4	6	-	0/2/19/22	0/1/1/1
6	MAN	I	5	6	-	0/2/19/22	0/1/1/1
6	NAG	J	1	4,6	-	1/6/23/26	0/1/1/1
6	NAG	J	2	6	-	2/6/23/26	0/1/1/1
6	BMA	J	3	6	-	2/2/19/22	0/1/1/1
6	MAN	J	4	6	-	0/2/19/22	0/1/1/1
6	MAN	J	5	6	-	0/2/19/22	0/1/1/1

All (1) bond length outliers are listed below:

Mol	Chain	Res	Type	Atoms	Z	Observed(Å)	Ideal(Å)
5	C	2	NAG	O5-C1	3.64	1.49	1.43



The worst 5 of 11 bond angle outliers are listed below:

Mol	Chain	Res	Type	Atoms	Z	Observed(°)	Ideal(°)
5	C	2	NAG	C1-O5-C5	5.21	119.25	112.19
6	J	5	MAN	C1-O5-C5	2.52	115.61	112.19
6	I	5	MAN	C1-O5-C5	2.44	115.50	112.19
6	I	4	MAN	C1-O5-C5	2.32	115.33	112.19
6	J	4	MAN	C1-O5-C5	2.26	115.26	112.19

There are no chirality outliers.

5 of 16 torsion outliers are listed below:

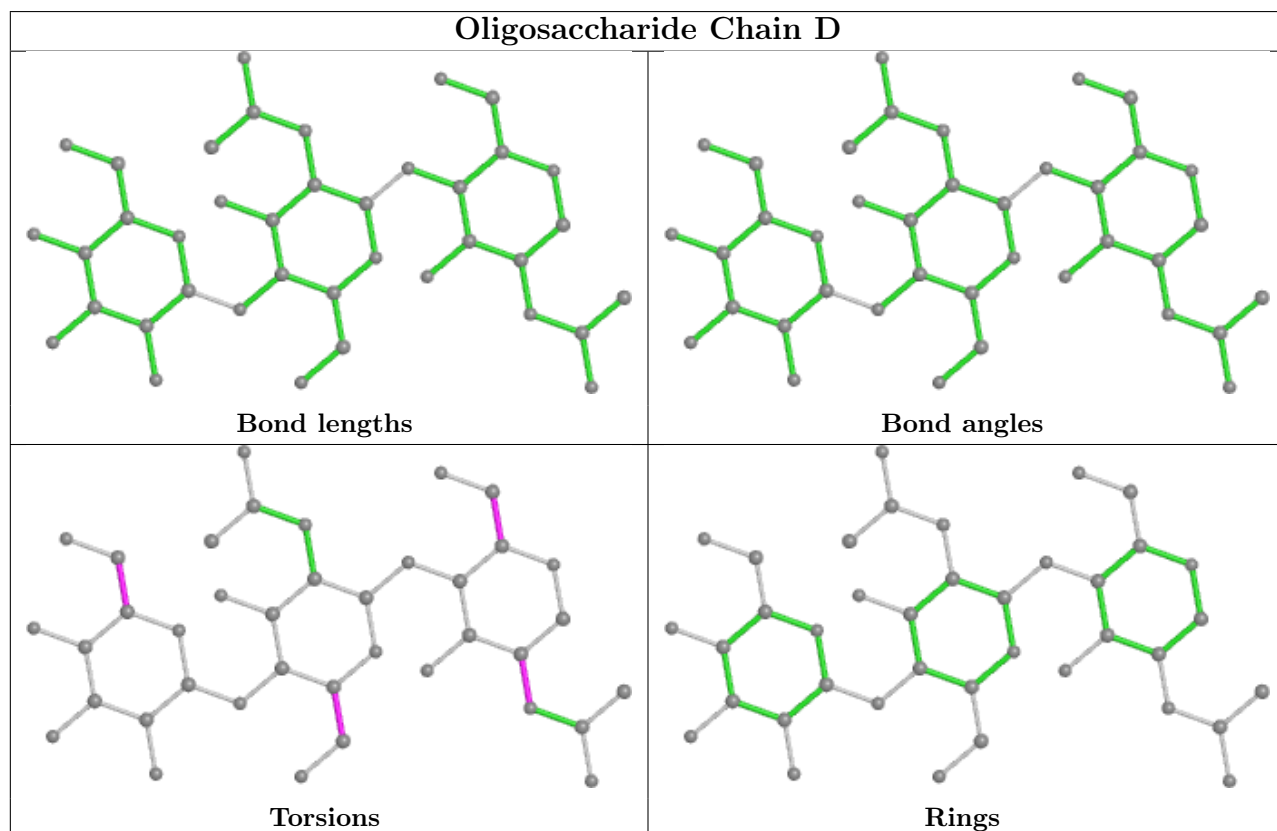
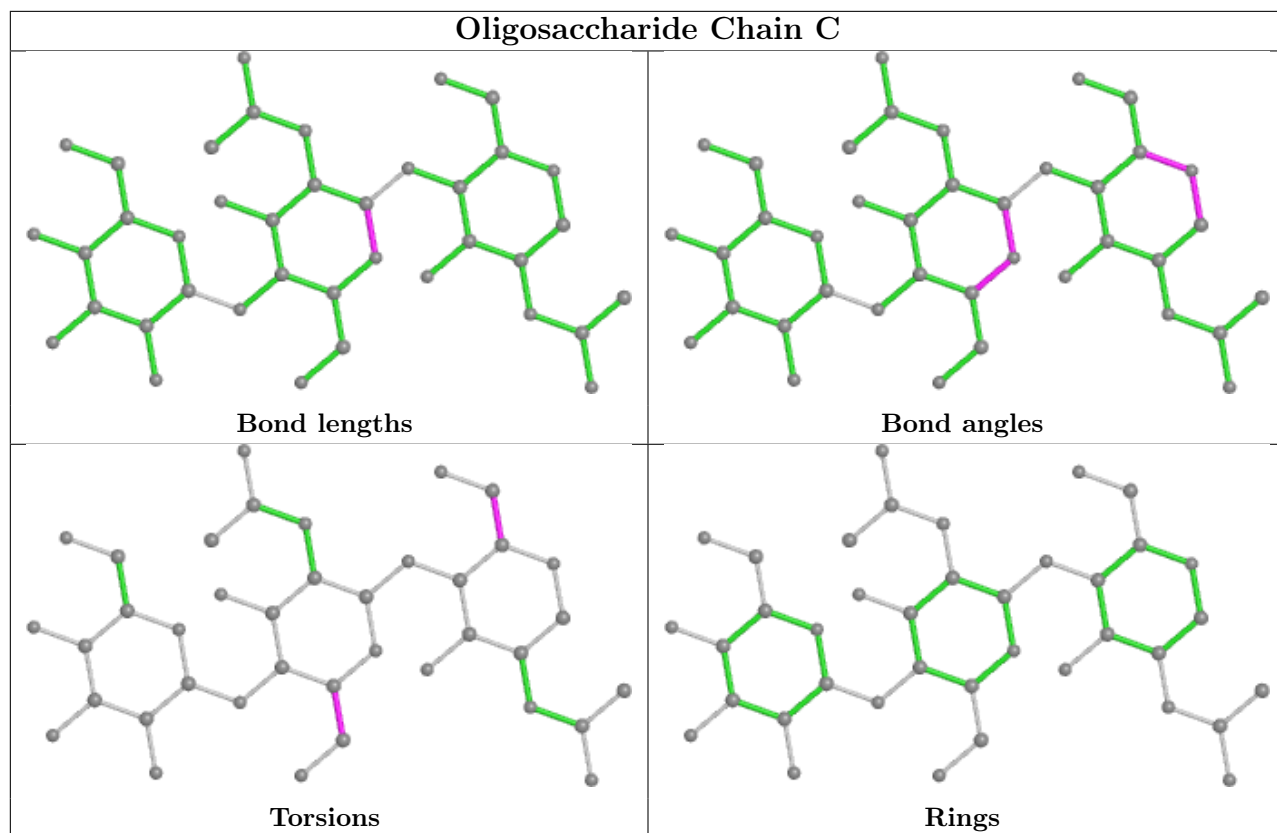
Mol	Chain	Res	Type	Atoms
6	J	2	NAG	O5-C5-C6-O6
5	D	2	NAG	C4-C5-C6-O6
5	D	2	NAG	O5-C5-C6-O6
6	J	2	NAG	C4-C5-C6-O6
5	D	1	NAG	C4-C5-C6-O6

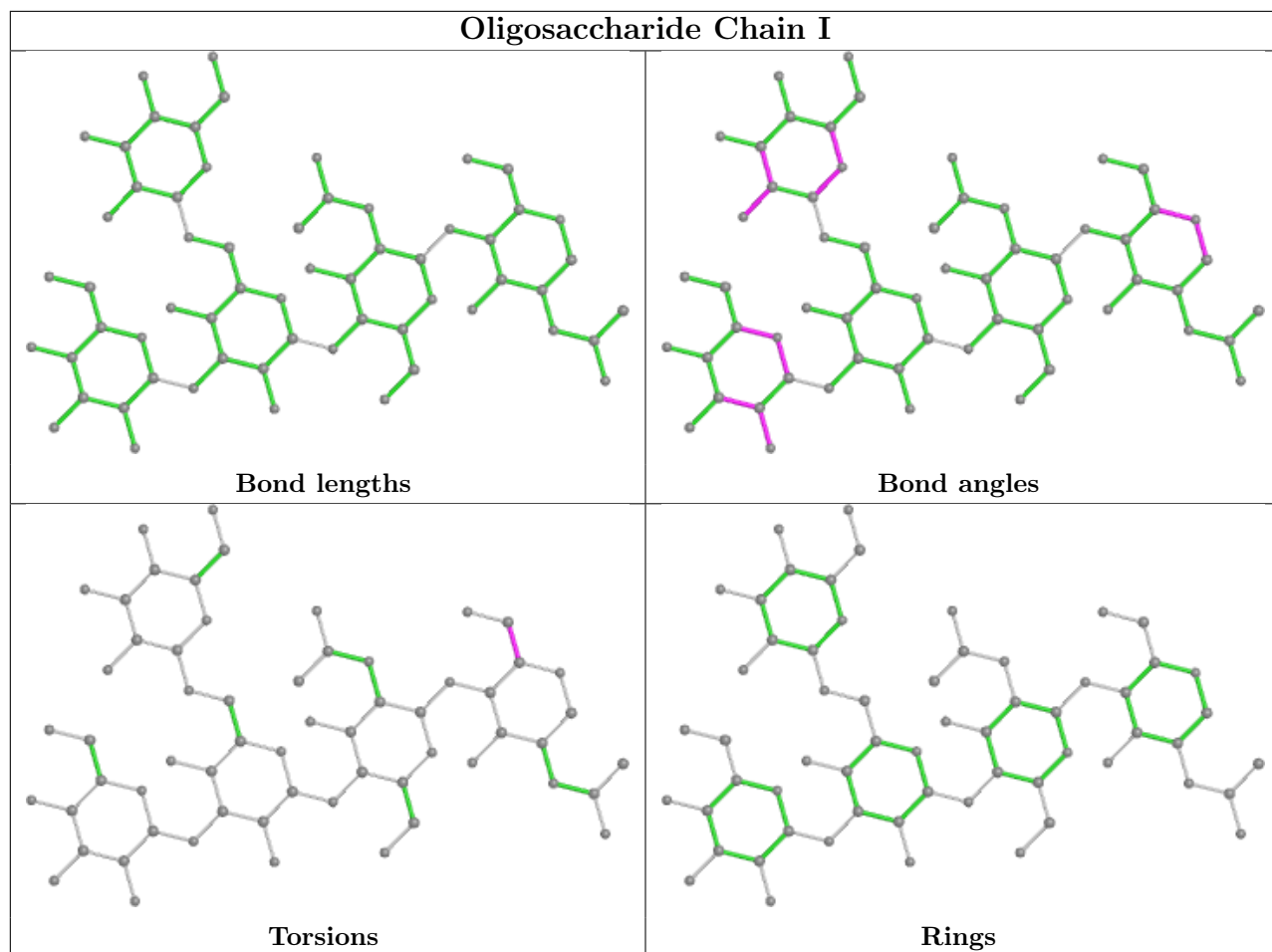
There are no ring outliers.

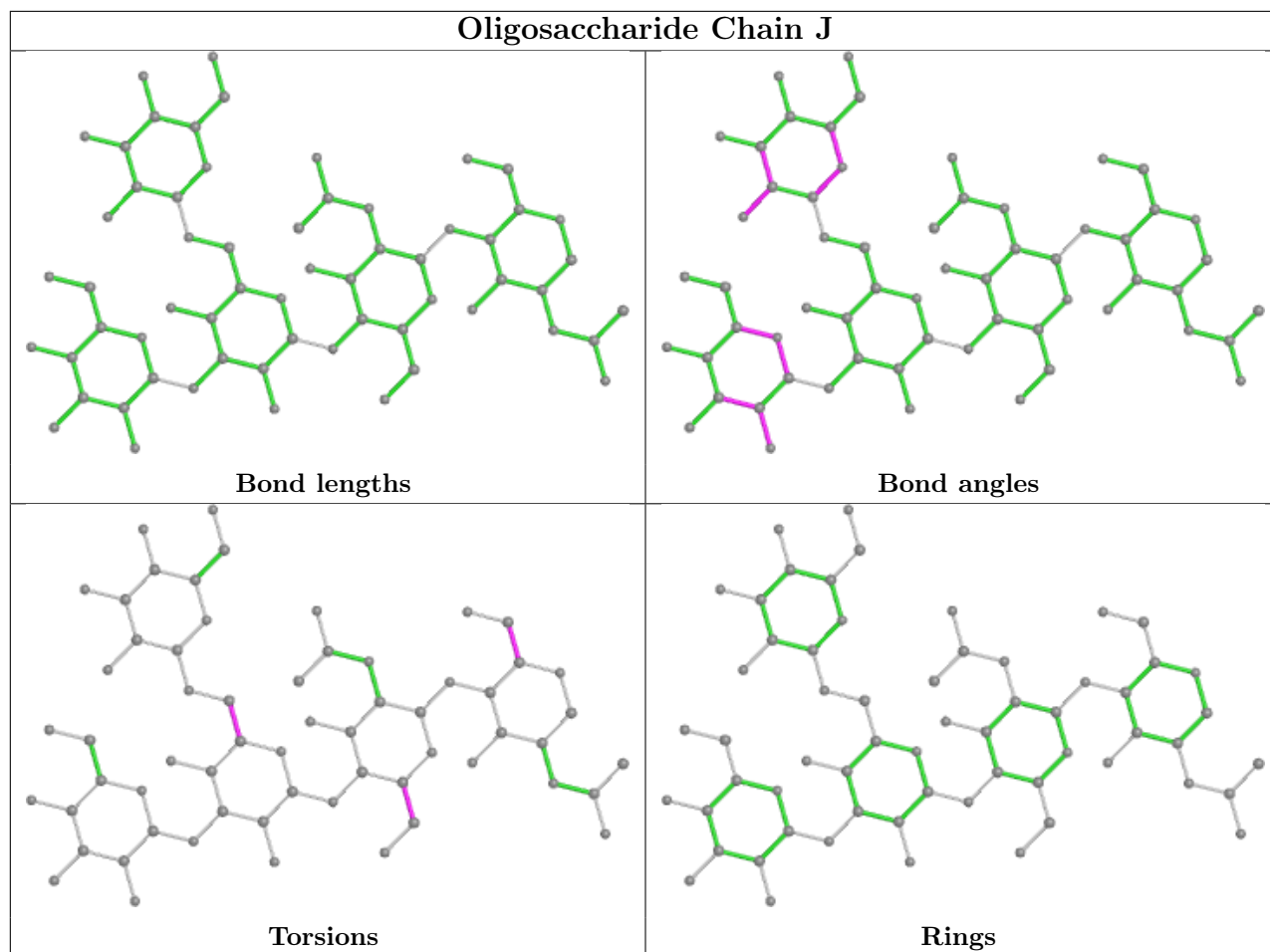
3 monomers are involved in 7 short contacts:

Mol	Chain	Res	Type	Clashes	Symm-Clashes
6	I	2	NAG	2	0
6	I	1	NAG	5	0
6	J	1	NAG	2	0

The following is a two-dimensional graphical depiction of Mogul quality analysis of bond lengths, bond angles, torsion angles, and ring geometry for oligosaccharide.







## 5.6 Ligand geometry [i](#)

7 ligands are modelled in this entry.

In the following table, the Counts columns list the number of bonds (or angles) for which Mogul statistics could be retrieved, the number of bonds (or angles) that are observed in the model and the number of bonds (or angles) that are defined in the Chemical Component Dictionary. The Link column lists molecule types, if any, to which the group is linked. The Z score for a bond length (or angle) is the number of standard deviations the observed value is removed from the expected value. A bond length (or angle) with  $|Z| > 2$  is considered an outlier worth inspection. RMSZ is the root-mean-square of all Z scores of the bond lengths (or angles).

Mol	Type	Chain	Res	Link	Bond lengths			Bond angles		
					Counts	RMSZ	# $ Z  > 2$	Counts	RMSZ	# $ Z  > 2$
7	NAG	F	502	4	14,14,15	0.31	0	17,19,21	1.02	2 (11%)
7	NAG	A	303	1	14,14,15	0.24	0	17,19,21	0.51	0
7	NAG	E	501	4	14,14,15	0.97	1 (7%)	17,19,21	1.05	1 (5%)
7	NAG	A	301	1	14,14,15	0.22	0	17,19,21	0.43	0
7	NAG	A	302	1	14,14,15	0.39	0	17,19,21	0.50	0
7	NAG	F	501	4	14,14,15	0.31	0	17,19,21	0.32	0

Mol	Type	Chain	Res	Link	Bond lengths			Bond angles		
					Counts	RMSZ	# Z  > 2	Counts	RMSZ	# Z  > 2
7	NAG	E	502	4	14,14,15	0.23	0	17,19,21	0.39	0

In the following table, the Chirals column lists the number of chiral outliers, the number of chiral centers analysed, the number of these observed in the model and the number defined in the Chemical Component Dictionary. Similar counts are reported in the Torsion and Rings columns. '-' means no outliers of that kind were identified.

Mol	Type	Chain	Res	Link	Chirals	Torsions	Rings
7	NAG	F	502	4	-	1/6/23/26	0/1/1/1
7	NAG	A	303	1	-	3/6/23/26	0/1/1/1
7	NAG	E	501	4	-	2/6/23/26	0/1/1/1
7	NAG	A	301	1	-	2/6/23/26	0/1/1/1
7	NAG	A	302	1	-	2/6/23/26	0/1/1/1
7	NAG	F	501	4	-	1/6/23/26	0/1/1/1
7	NAG	E	502	4	-	2/6/23/26	0/1/1/1

All (1) bond length outliers are listed below:

Mol	Chain	Res	Type	Atoms	Z	Observed(Å)	Ideal(Å)
7	E	501	NAG	O5-C1	3.17	1.48	1.43

All (3) bond angle outliers are listed below:

Mol	Chain	Res	Type	Atoms	Z	Observed(°)	Ideal(°)
7	E	501	NAG	C1-O5-C5	4.09	117.73	112.19
7	F	502	NAG	C2-N2-C7	3.02	127.20	122.90
7	F	502	NAG	C1-C2-N2	2.12	114.11	110.49

There are no chirality outliers.

5 of 13 torsion outliers are listed below:

Mol	Chain	Res	Type	Atoms
7	E	502	NAG	C4-C5-C6-O6
7	A	303	NAG	O5-C5-C6-O6
7	A	302	NAG	O5-C5-C6-O6
7	A	303	NAG	C4-C5-C6-O6
7	E	502	NAG	O5-C5-C6-O6

There are no ring outliers.

2 monomers are involved in 3 short contacts:

Mol	Chain	Res	Type	Clashes	Symm-Clashes
7	A	302	NAG	1	0
7	F	501	NAG	2	0

## 5.7 Other polymers [i](#)

There are no such residues in this entry.

## 5.8 Polymer linkage issues [i](#)

There are no chain breaks in this entry.

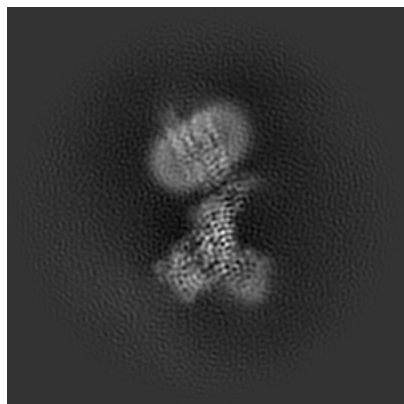
## 6 Map visualisation [i](#)

This section contains visualisations of the EMDB entry EMD-36941. These allow visual inspection of the internal detail of the map and identification of artifacts.

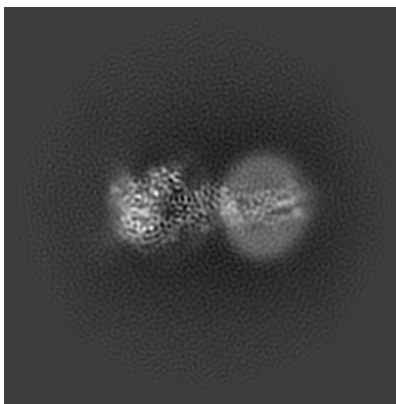
Images derived from a raw map, generated by summing the deposited half-maps, are presented below the corresponding image components of the primary map to allow further visual inspection and comparison with those of the primary map.

### 6.1 Orthogonal projections [i](#)

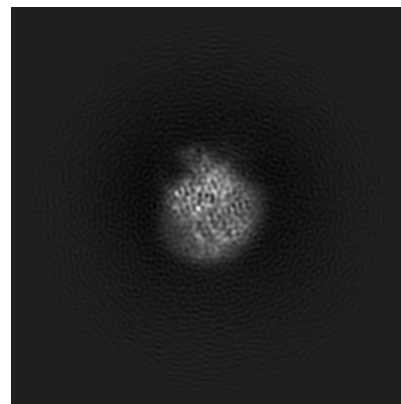
#### 6.1.1 Primary map



X

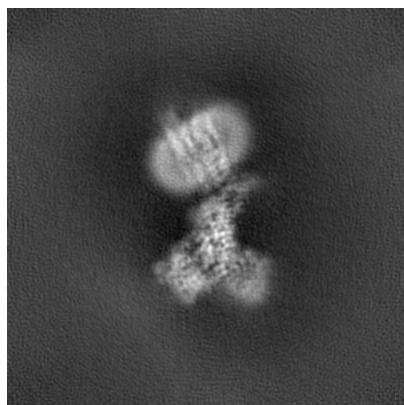


Y

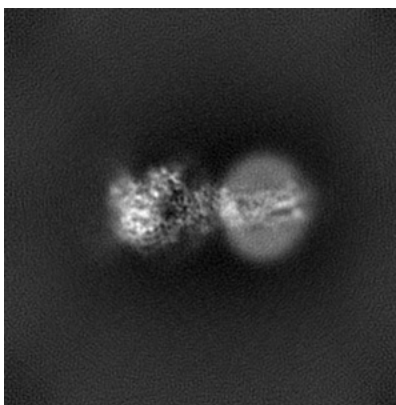


Z

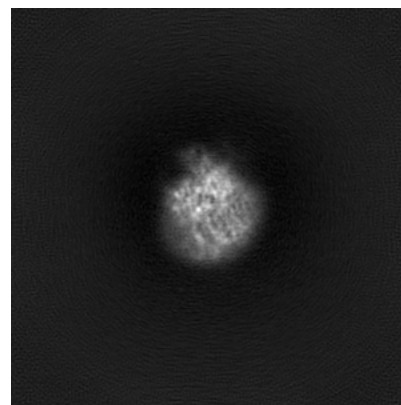
#### 6.1.2 Raw map



X



Y

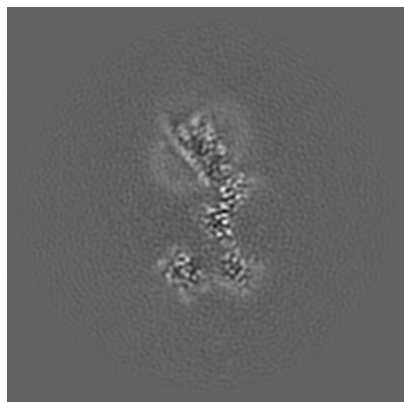


Z

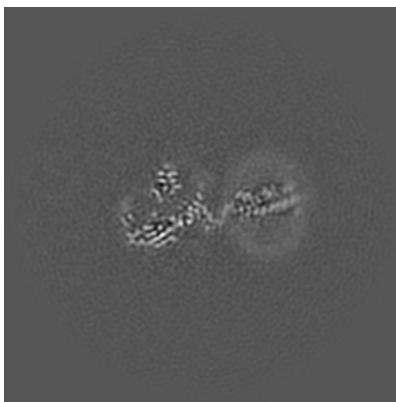
The images above show the map projected in three orthogonal directions.

## 6.2 Central slices [i](#)

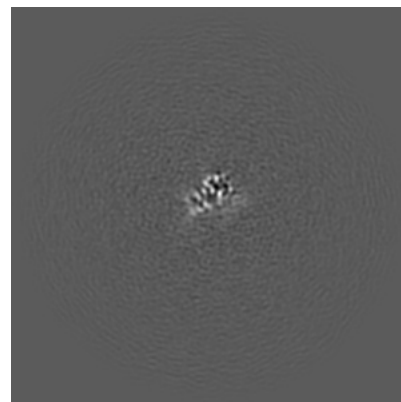
### 6.2.1 Primary map



X Index: 120

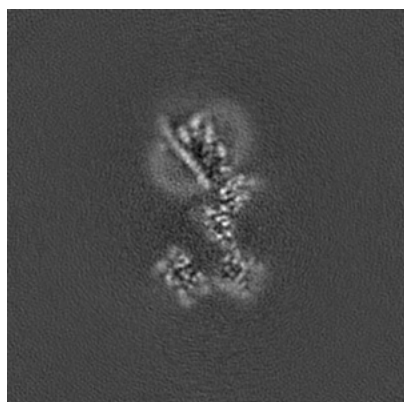


Y Index: 120

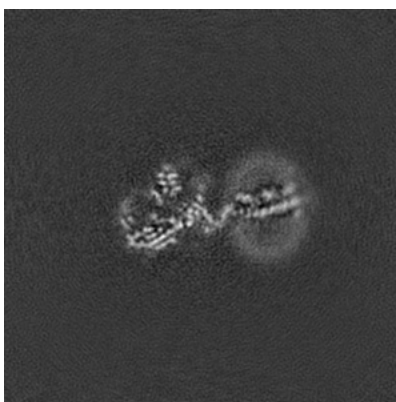


Z Index: 120

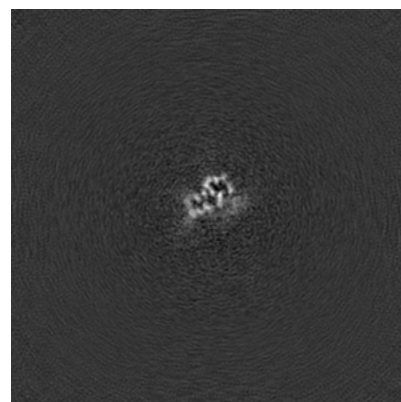
### 6.2.2 Raw map



X Index: 120



Y Index: 120



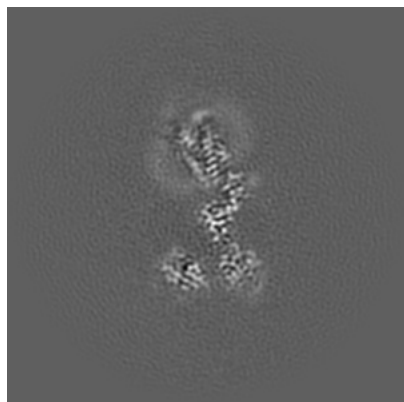
Z Index: 120

The images above show central slices of the map in three orthogonal directions.

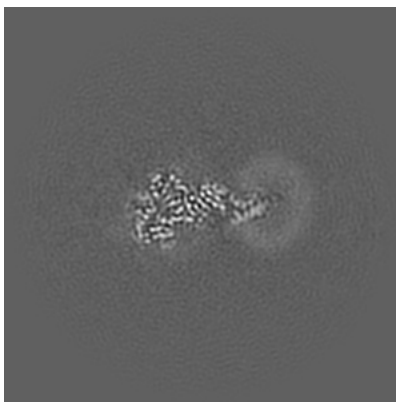


## 6.3 Largest variance slices [i](#)

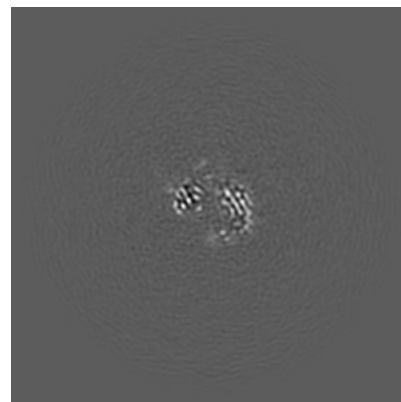
### 6.3.1 Primary map



X Index: 118

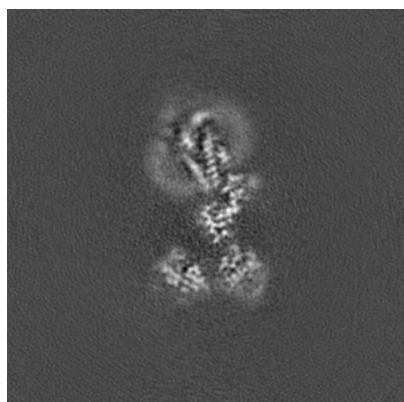


Y Index: 130

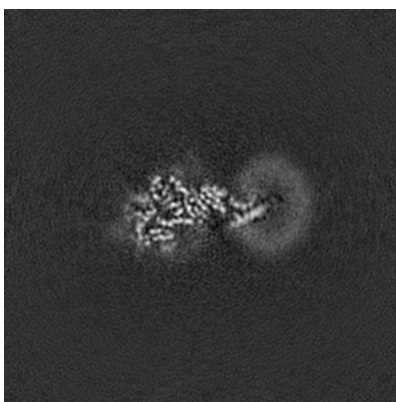


Z Index: 95

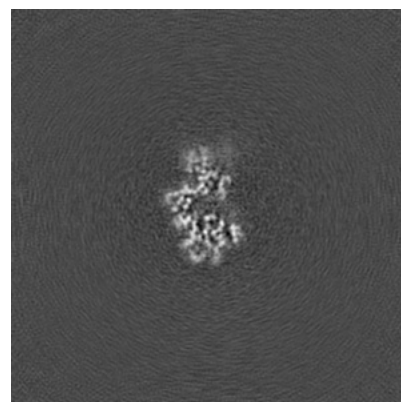
### 6.3.2 Raw map



X Index: 118



Y Index: 130

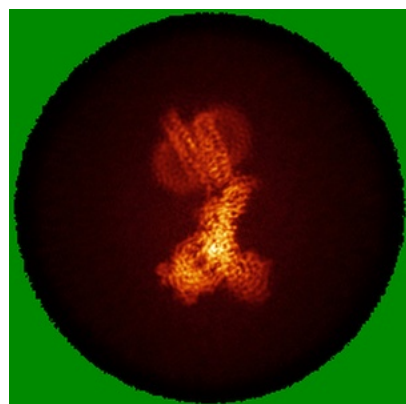


Z Index: 81

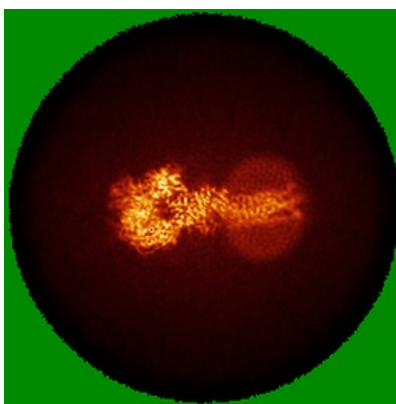
The images above show the largest variance slices of the map in three orthogonal directions.

## 6.4 Orthogonal standard-deviation projections (False-color) [i](#)

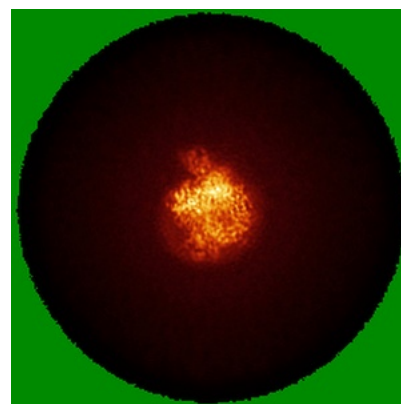
### 6.4.1 Primary map



X

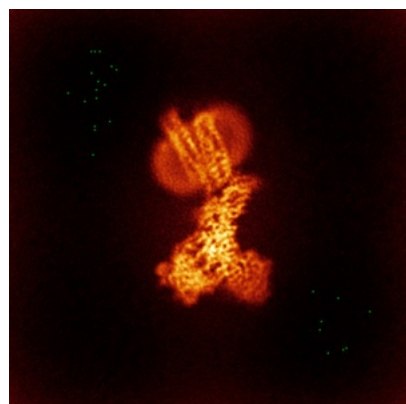


Y

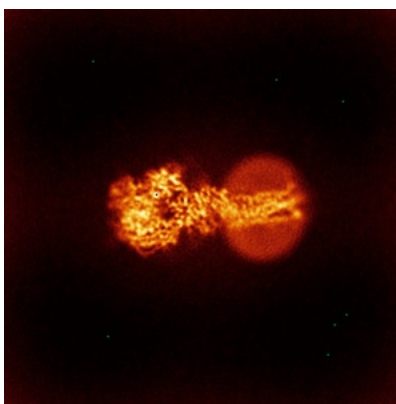


Z

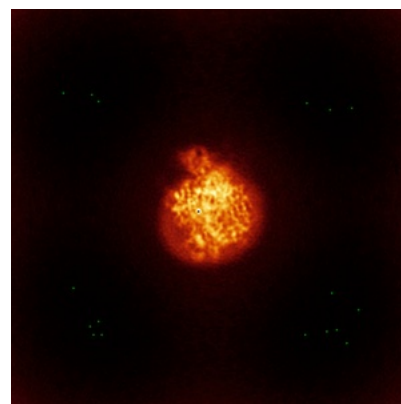
### 6.4.2 Raw map



X



Y



Z

The images above show the map standard deviation projections with false color in three orthogonal directions. Minimum values are shown in green, max in blue, and dark to light orange shades represent small to large values respectively.

## 6.5 Orthogonal surface views [i](#)

### 6.5.1 Primary map



The images above show the 3D surface view of the map at the recommended contour level 1.0. These images, in conjunction with the slice images, may facilitate assessment of whether an appropriate contour level has been provided.

### 6.5.2 Raw map



These images show the 3D surface of the raw map. The raw map's contour level was selected so that its surface encloses the same volume as the primary map does at its recommended contour level.

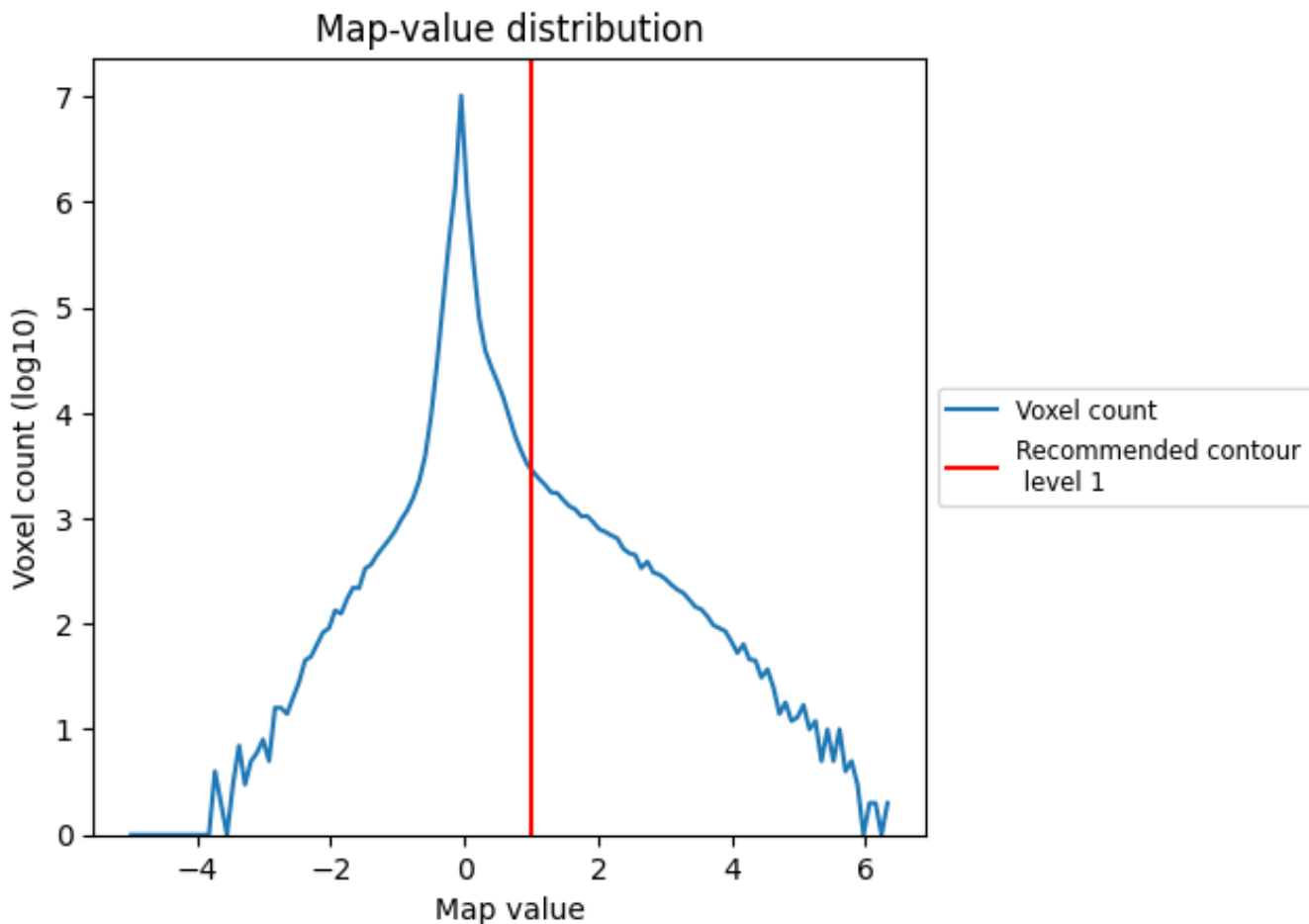
## 6.6 Mask visualisation [i](#)

This section was not generated. No masks/segmentation were deposited.

## 7 Map analysis [i](#)

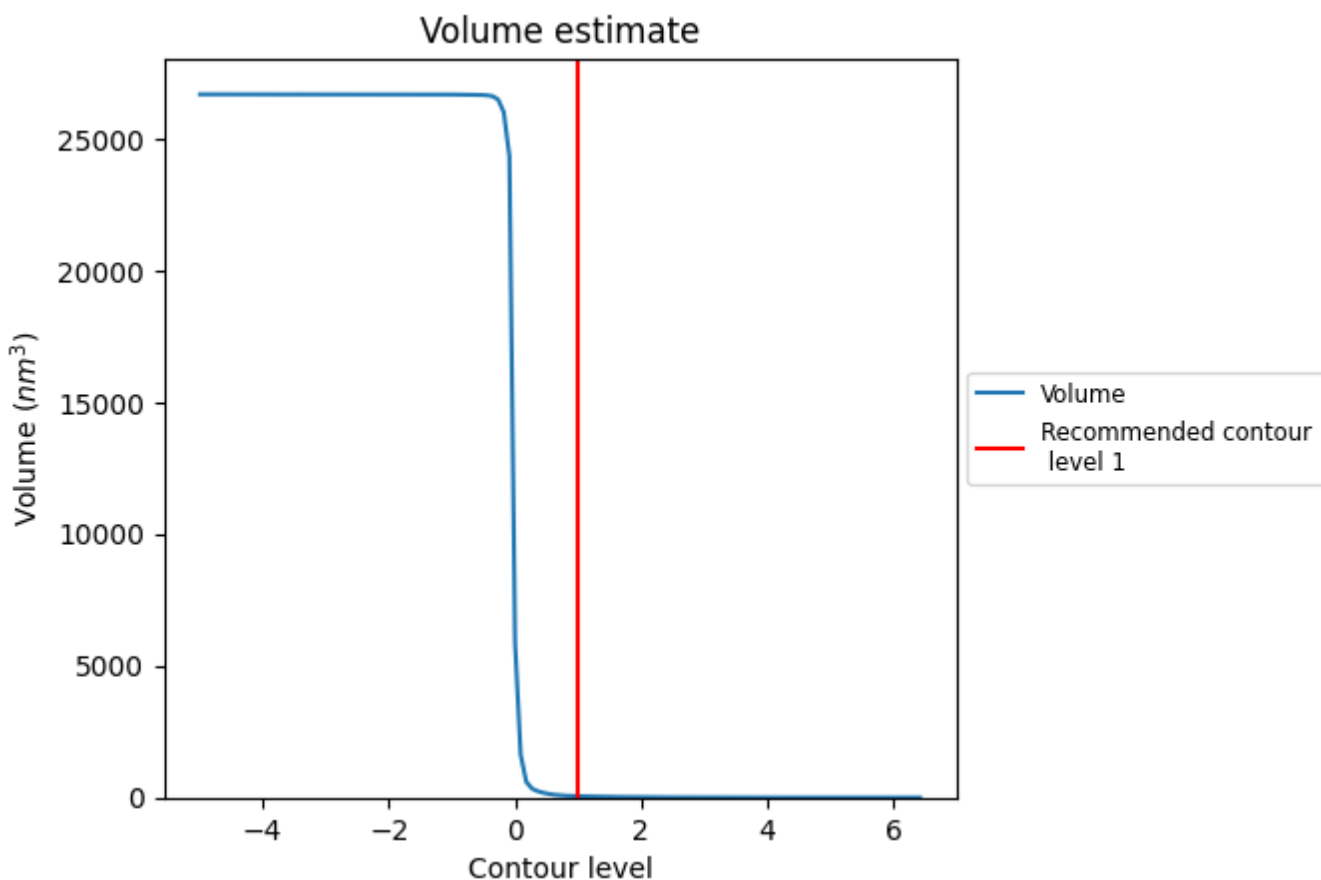
This section contains the results of statistical analysis of the map.

### 7.1 Map-value distribution [i](#)



The map-value distribution is plotted in 128 intervals along the x-axis. The y-axis is logarithmic. A spike in this graph at zero usually indicates that the volume has been masked.

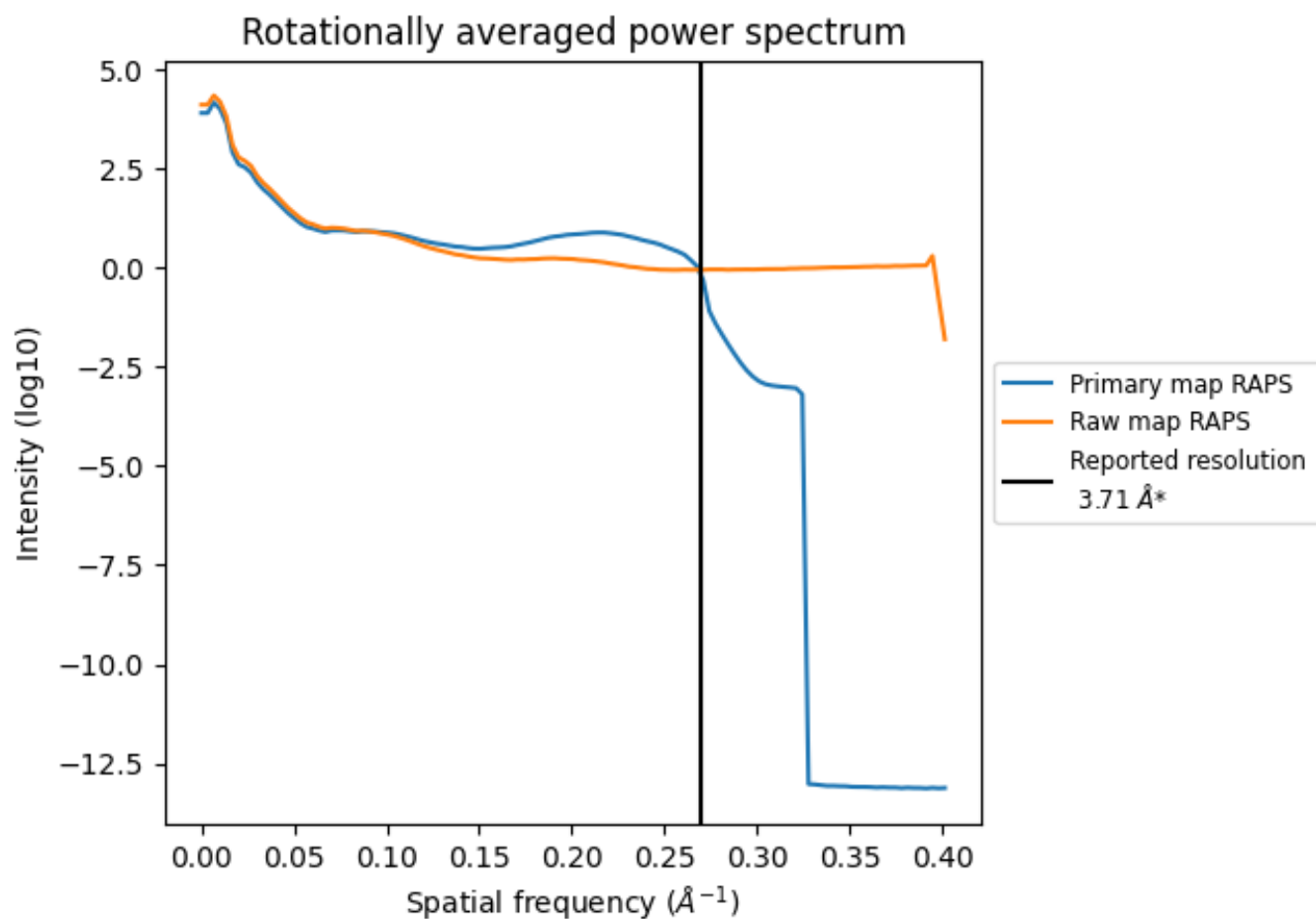
## 7.2 Volume estimate [i](#)



The volume at the recommended contour level is 52 nm<sup>3</sup>; this corresponds to an approximate mass of 47 kDa.

The volume estimate graph shows how the enclosed volume varies with the contour level. The recommended contour level is shown as a vertical line and the intersection between the line and the curve gives the volume of the enclosed surface at the given level.

### 7.3 Rotationally averaged power spectrum [i](#)

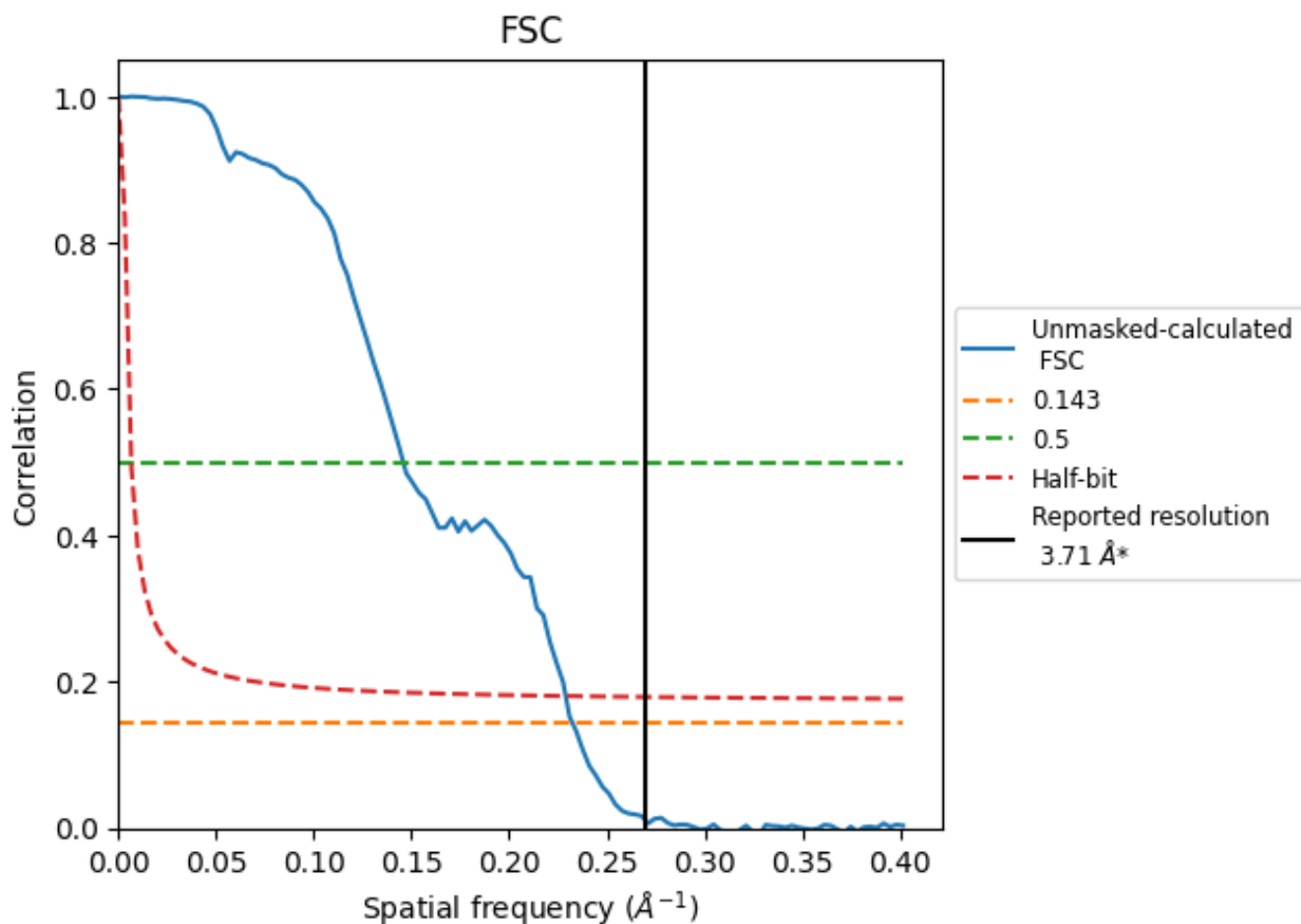


\*Reported resolution corresponds to spatial frequency of 0.270 Å<sup>-1</sup>

## 8 Fourier-Shell correlation [i](#)

Fourier-Shell Correlation (FSC) is the most commonly used method to estimate the resolution of single-particle and subtomogram-averaged maps. The shape of the curve depends on the imposed symmetry, mask and whether or not the two 3D reconstructions used were processed from a common reference. The reported resolution is shown as a black line. A curve is displayed for the half-bit criterion in addition to lines showing the 0.143 gold standard cut-off and 0.5 cut-off.

### 8.1 FSC [i](#)



\*Reported resolution corresponds to spatial frequency of 0.270 Å<sup>-1</sup>

## 8.2 Resolution estimates [i](#)

Resolution estimate (Å)	Estimation criterion (FSC cut-off)		
	0.143	0.5	Half-bit
Reported by author	3.71	-	-
Author-provided FSC curve	-	-	-
Unmasked-calculated*	4.30	6.86	4.37

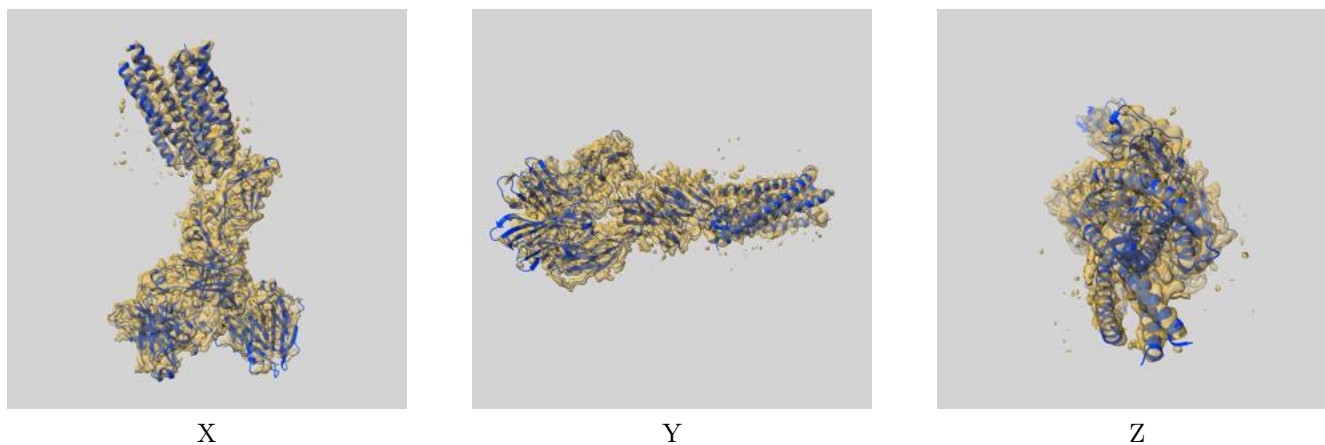
\*Resolution estimate based on FSC curve calculated by comparison of deposited half-maps. The value from deposited half-maps intersecting FSC 0.143 CUT-OFF 4.30 differs from the reported value 3.71 by more than 10 %



## 9 Map-model fit [i](#)

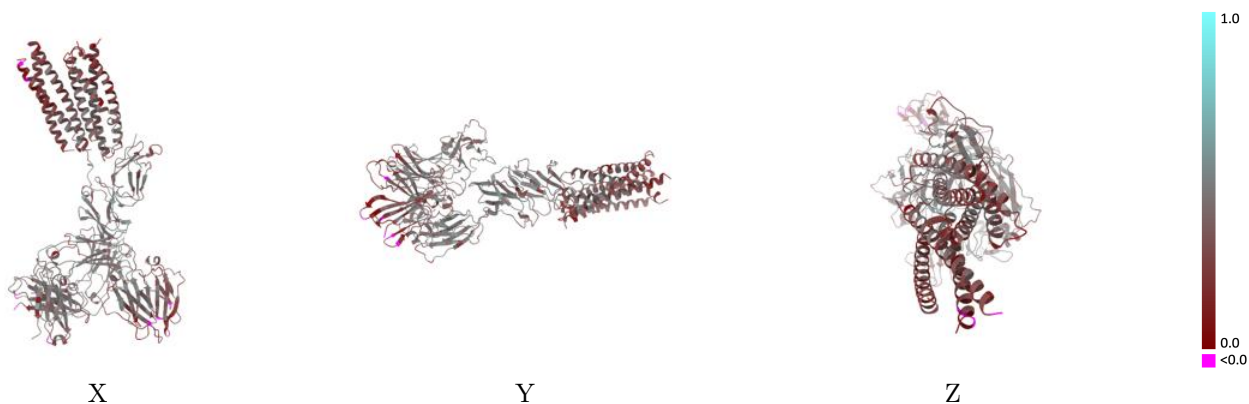
This section contains information regarding the fit between EMDB map EMD-36941 and PDB model 8K7T. Per-residue inclusion information can be found in section [3](#) on page [8](#).

### 9.1 Map-model overlay [i](#)



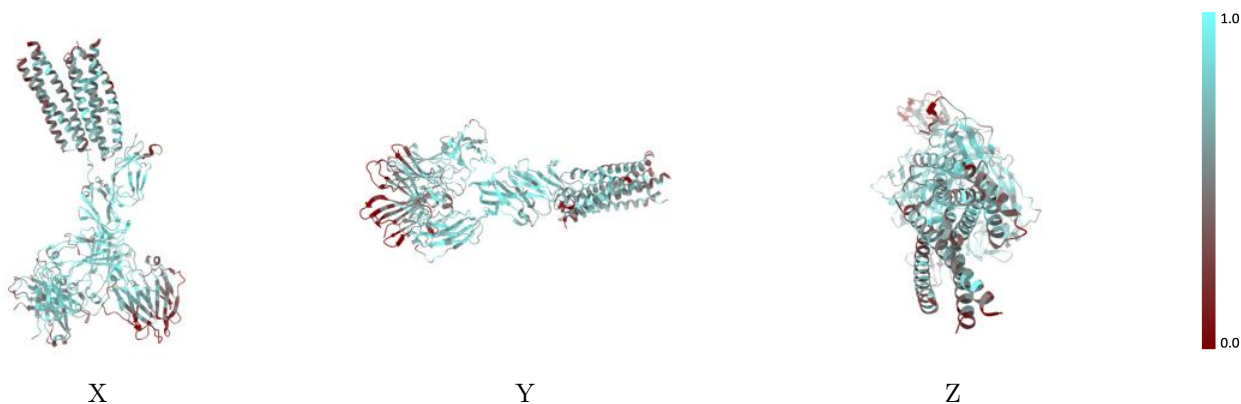
The images above show the 3D surface view of the map at the recommended contour level 1.0 at 50% transparency in yellow overlaid with a ribbon representation of the model coloured in blue. These images allow for the visual assessment of the quality of fit between the atomic model and the map.

## 9.2 Q-score mapped to coordinate model [\(i\)](#)



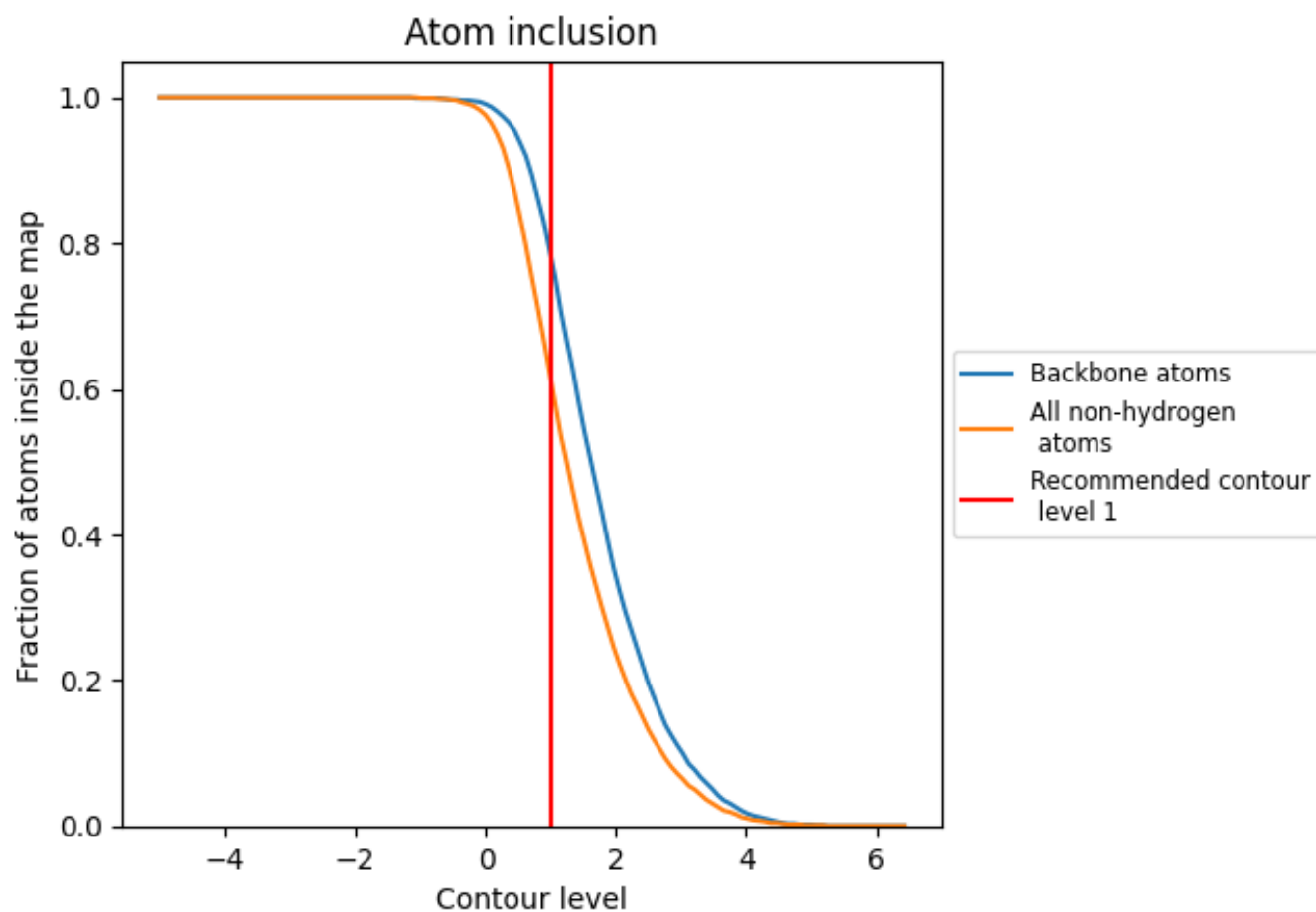
The images above show the model with each residue coloured according to its Q-score. This shows their resolvability in the map with higher Q-score values reflecting better resolvability. Please note: Q-score is calculating the resolvability of atoms, and thus high values are only expected at resolutions at which atoms can be resolved. Low Q-score values may therefore be expected for many entries.

## 9.3 Atom inclusion mapped to coordinate model [\(i\)](#)



The images above show the model with each residue coloured according to its atom inclusion. This shows to what extent they are inside the map at the recommended contour level (1).























## 9.4 Atom inclusion [i](#)



At the recommended contour level, 79% of all backbone atoms, 62% of all non-hydrogen atoms, are inside the map.

## 9.5 Map-model fit summary [i](#)

The table lists the average atom inclusion at the recommended contour level (1) and Q-score for the entire model and for each chain.

Chain	Atom inclusion	Q-score
All	 0.6160	 0.3700
A	 0.6880	 0.3910
B	 0.5910	 0.3150
C	 0.5130	 0.2990
D	 0.7180	 0.4460
E	 0.5910	 0.3760
F	 0.6240	 0.3980
G	 0.5170	 0.2500
H	 0.5060	 0.2880
I	 0.7540	 0.4640
J	 0.7540	 0.4600

